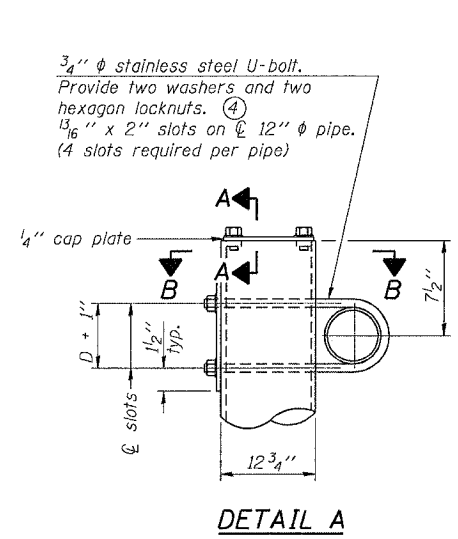
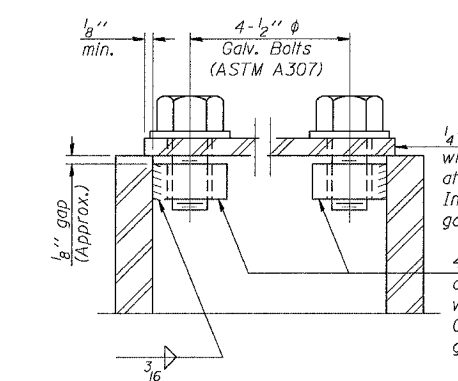


F.A.I. RTE.	SECTION	COUNTY	TOTAL SHEETS	SHEET NO.
55	2005-085 SG	WILL	28	13
STA.		TO STA.		
FED. ROAD DIST. NO.		ILLINOIS FED. AID PROJECT		

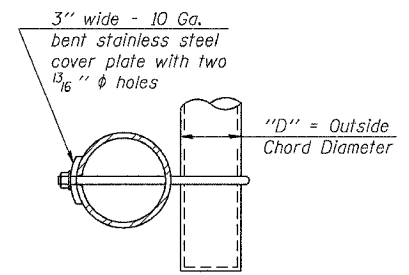


DETAIL A

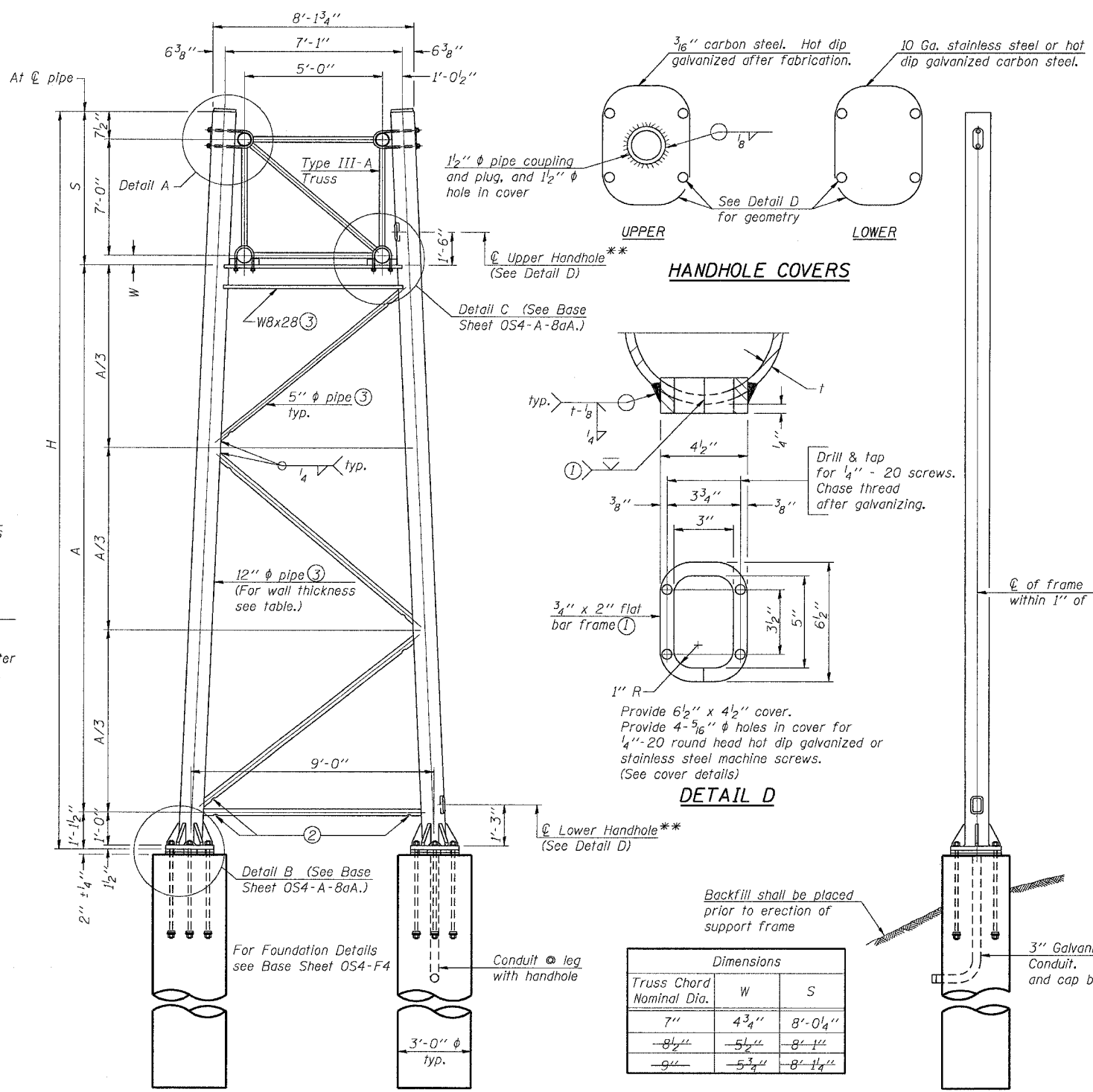


SECTION A-A

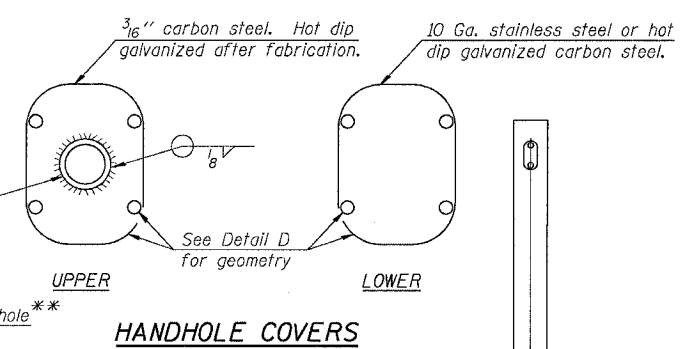
As an alternate to bolts, may use galvanized drive-fit caps installed after galvanizing frame.



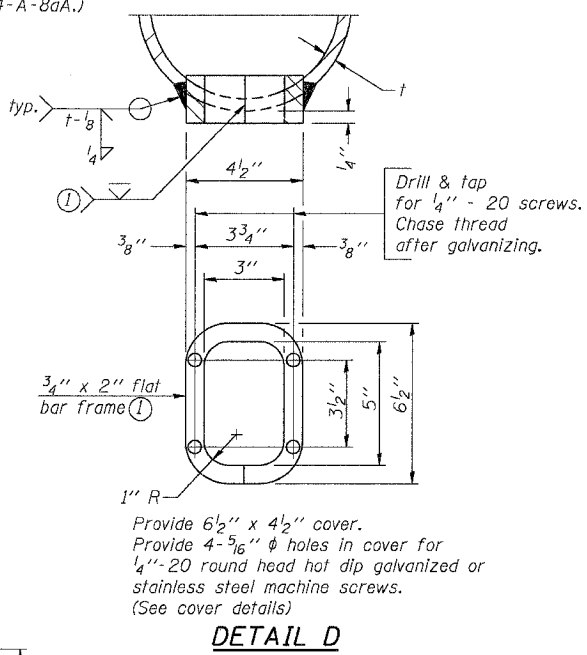
SECTION B-B



SIDE ELEVATION



HANDHOLE COVERS



DETAIL D

Dimensions		
Truss Chord Nominal Dia.	W	S
7"	4 3/4"	8'-0 1/4"
8 1/2"	5 1/2"	8'-1"
9"	5 3/4"	8'-1 1/4"

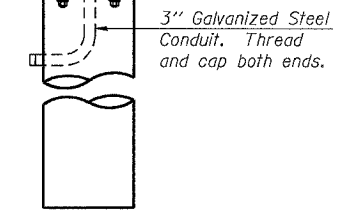
TRUSS SUPPORT DETAILS
(12" ϕ Pipe-Type III-A Truss)

Support Design Loads: See Base Sheet OS-A-1 for design and loading criteria.
Load combinations checked include deadload plus:
a) 100% wind normal to sign, 20% parallel to sign
b) 60% wind normal to sign, 30% parallel to sign

- In lieu of fabricated handhole frame as shown, may cut from 2" plate (rolling direction vertical). All cut faces to be ground to ANSI Roughness of 500 min or less.
- Galvanizing vent holes of adequate size shall be provided on underside at each end of bracing pipes. Alternately, holes may be provided in wall of pipe column. All vent holes shall be drilled and de-burred, typ.
- Steel pipe, plate, carbon steel handhole covers and rolled sections shall be hot dip galvanized after fabrication. Painting is not permitted. See Base Sheet OS-A-1.
- See General Notes for Fasteners.
- Dimensions shown are based on selection criteria in the Sign Structures Manual. Nonstandard applications must have dimensions verified or amended as appropriate.

** Handholes (Upper and Lower) shall be located in each leg of each truss support.

Structure Number	Station	Support		Pipe Wall Thickness	H	A
		Left	Right			
IS0991055R247.37	59+00.00	12		0.33	26'-3"	17'-1 1/4"
IS0991055R247.37	59+00.00		12	0.33	27'-3"	18'-1 1/4"
IS0991055R255.26	469+00.00	12		0.33	23'-10 1/2"	14'-8 3/4"
IS0991055R255.26	469+00.00		12	0.33	26'-9"	17'-7 1/4"



END ELEVATION

NUMBER	REVISION	DATE

SHT. S-6 OF 15

REVISIONS	
NAME	DATE

ILLINOIS DEPARTMENT OF TRANSPORTATION
FAI ROUTE 55 (I-80 TO U.S. 30)
DYNAMIC MESSAGING SIGNS

**OVERHEAD SIGN STRUCTURES
SUPPORT FRAME FOR
TYPE III-A ALUMINUM TRUSS**

SCALE: DATE 03/27/06 DRAWN BY MRK CHECKED BY MJK

TENG TENG & ASSOCIATES, INC.
ENGINEERS/ARCHITECTS/PLANNERS
CHICAGO, ILLINOIS

PLOT DATE: # # # # #
 FILE NAME: # # # # #
 PLOT SCALE: # # # # #
 USER NAME: # # # # #
 S:\DOCUMENT\2261850\STRUCTURE\OS4-A-8a-13.dwg
 K:\R\1414
 ..\DPP\1402.DGN
 3-27-2006, 14:58:46