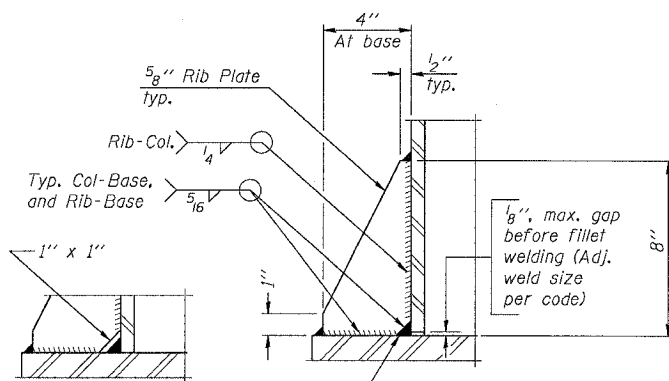
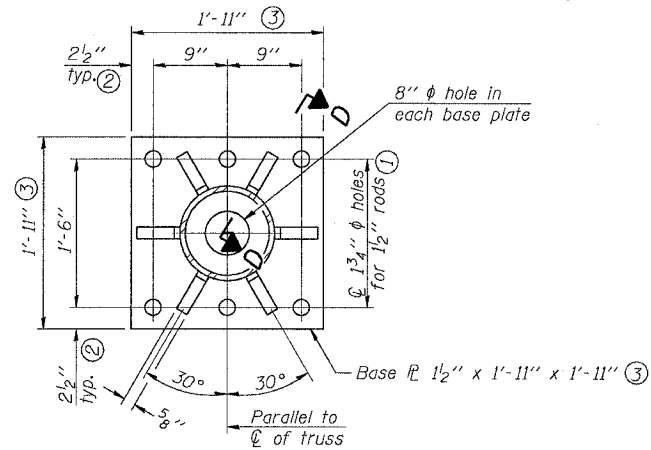
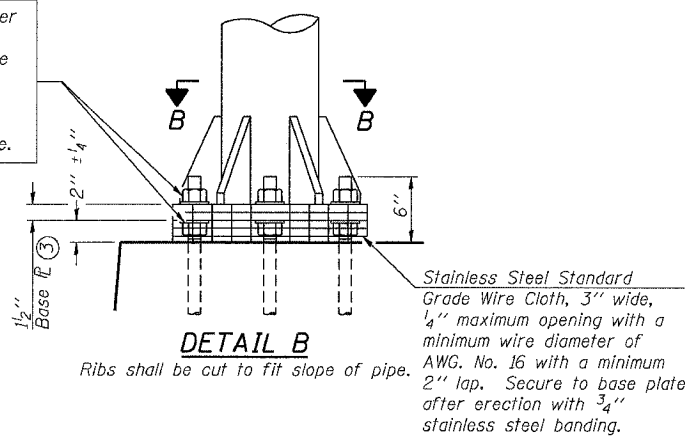


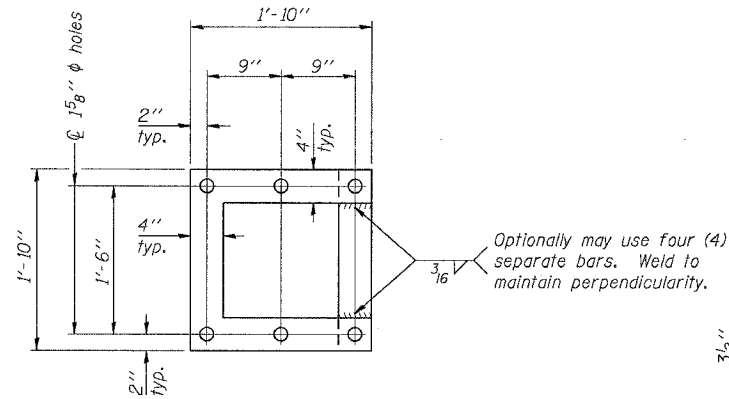
|                     |                           |         |              |           |
|---------------------|---------------------------|---------|--------------|-----------|
| F.A.I. RTE.         | SECTION                   | COUNTY  | TOTAL SHEETS | SHEET NO. |
| 55                  | 2005-085 SG               | WILL    | 28           | 14        |
| STA.                |                           | TO STA. |              |           |
| FED. ROAD DIST. NO. | ILLINOIS FED. AID PROJECT |         |              |           |

Hexagon locknut and washer (top), leveling nut and washer (bottom). Galvanize per AASHTO M232. Nuts shall each be tightened against base plate with 200 lb.-ft. minimum torque.

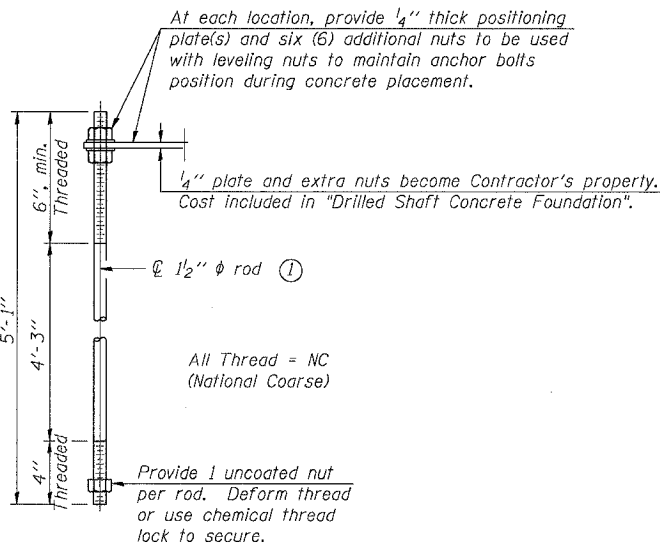


\*\* Alternate detail if welding col. to base plate first, then snip inside corner of ribs. Terminate weld on rib 1/4" from snip.

**SECTION D-D**



**POSITIONING PLATE(S)**



**ANCHOR ROD DETAIL**

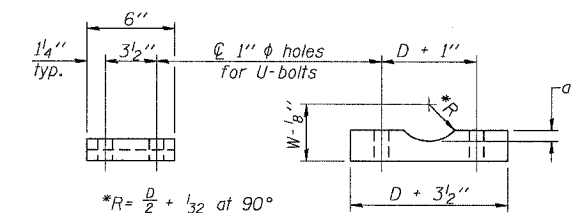
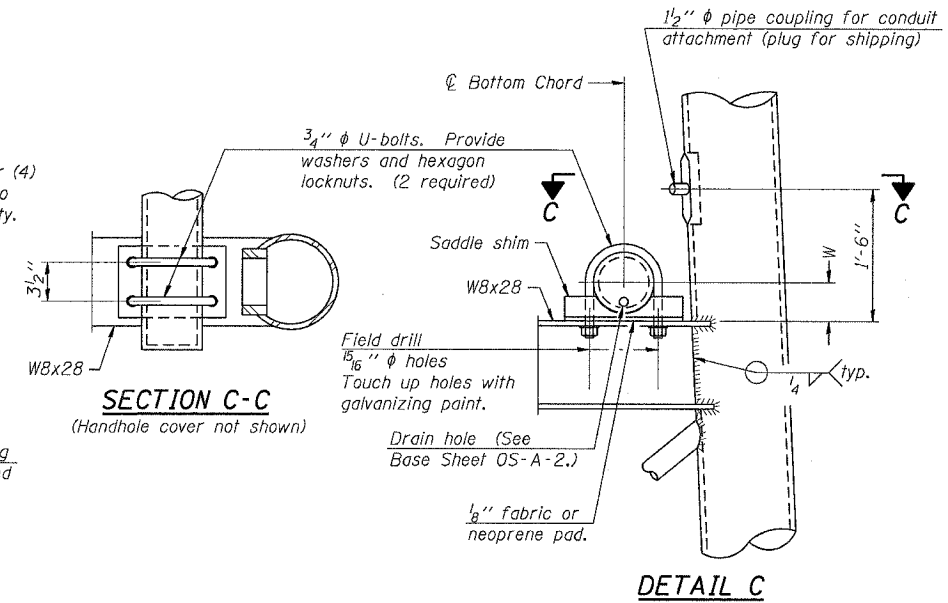
Anchor rods shall conform to AASHTO M314 Grade 36 or 55 and meet Charpy V-Notch (CVN) energy of 15 lb.-ft. at 40° F. Galvanize upper 12" per AASHTO M232. No welding shall be permitted on rods.

**TYPE III-A TRUSS  
12"  $\phi$  PIPE SUPPORT FRAME DETAILS**

Notes:  
For Type III-A Truss spans greater than 150 ft. and up to 160 ft.:

- ① 1 3/4"  $\phi$  rod, 2"  $\phi$  holes
- ② 2 3/4" edge distance
- ③ Base Pl. 1 5/8" x 1'-11 1/2" x 1'-11 1/2"

| NUMBER | REVISION | DATE |
|--------|----------|------|
|        |          |      |
|        |          |      |
|        |          |      |
|        |          |      |
|        |          |      |



**SADDLE SHIM DETAIL**

ASTM B26 Alloy 356-F  
or  
ASTM B209 Alloy 6061-T651  
(4 required per sign truss)

| Truss Chord Nominal Dia. | a      |
|--------------------------|--------|
| 7"                       | 1"     |
| 8 1/2"                   | 1 1/4" |
| 9"                       | 1 3/8" |

SHT. S-7 OF 15

| REVISIONS |      |
|-----------|------|
| NAME      | DATE |
|           |      |
|           |      |
|           |      |
|           |      |
|           |      |

ILLINOIS DEPARTMENT OF TRANSPORTATION  
FAI ROUTE 55 (I-80 TO I.J.S. 301)  
DYNAMIC MESSAGING SIGNS

**OVERHEAD SIGN STRUCTURES  
SUPPORT FRAME DETAILS FOR  
TYPE III-A ALUMINUM TRUSS**

SCALE: DRAWN BY MRK  
DATE 03/27/06 CHECKED BY MJR

**TENG**

TENG & ASSOCIATES, INC.  
ENGINEERS/ARCHITECTS/PLANNERS  
CHICAGO, ILLINOIS

..J:\09\10\02.DGN  
3-27-2005, 14:55:11  
KIRINTRA  
S:\DOCUMENT\M232159\STRUCT\CON\SS94\0816.SHT