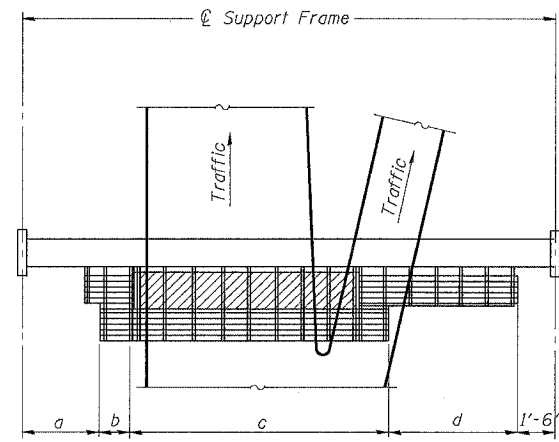
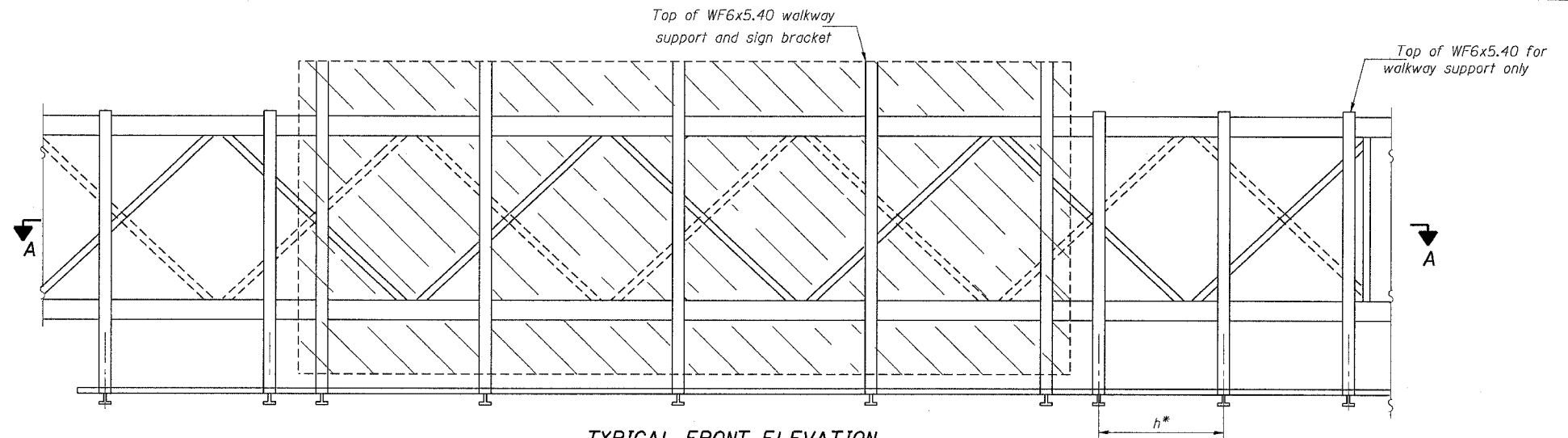


STATE OF ILLINOIS
DEPARTMENT OF TRANSPORTATION

F.A.I. RTE.	SECTION	COUNTY	TOTAL SHEETS	SHEET NO.
55	2005-085 SG	WILL	28	15
STA.		TO STA.		
FED. ROAD DIST. NO.		ILLINOIS FED. AID PROJECT		



PLAN
WALKWAY AND HANDRAIL SKETCH
(Road plan beneath truss varies)



TYPICAL FRONT ELEVATION

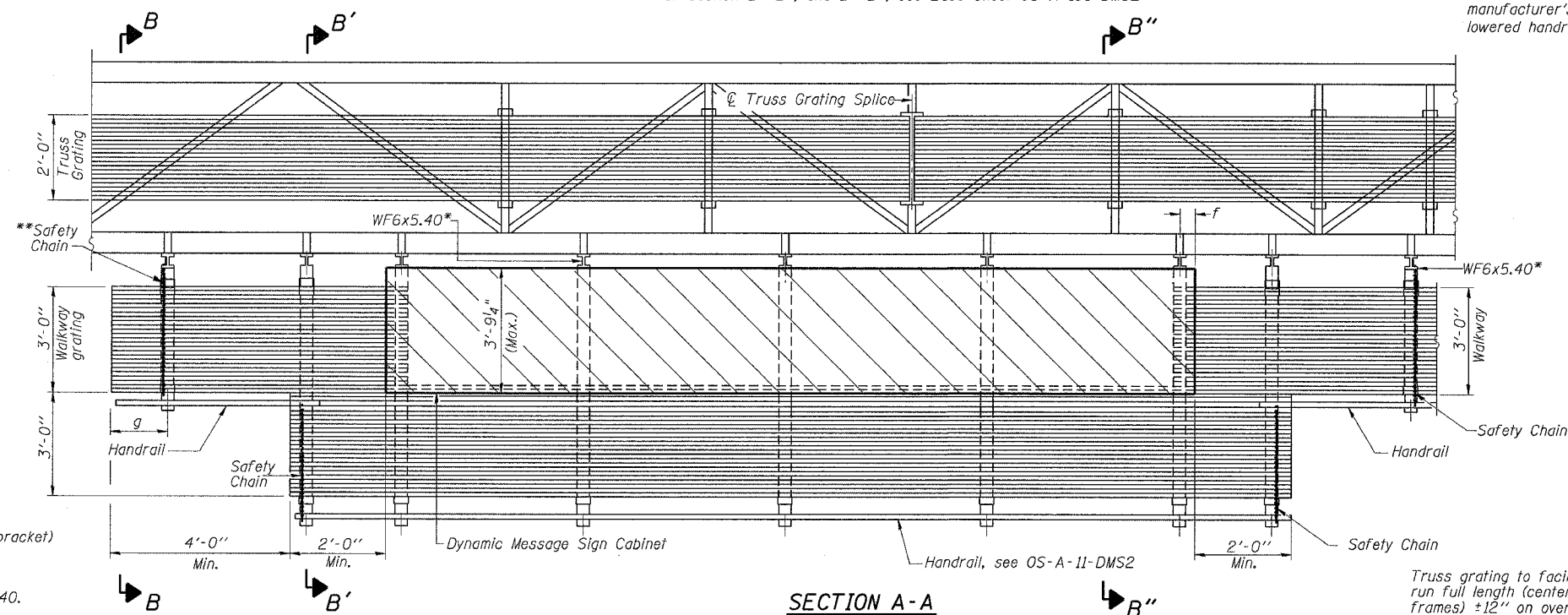
With handrail omitted for clarity.
For Section B-B, see Base Sheet OS-A-10-DMS2
For Section B'-B', and B''-B'', see Base Sheet OS-A-10a-DMS2

Bracket and grating dimensions are nominal and will vary based on actual DMS cabinet dimensions plus manufacturer's mounting devices, lowered handrail and DMS cabinet.

BRACKET TABLE

WF6x5.40 ASTM B308, Alloy 6061-T6		Number Brackets Required
Sign Width Greater Than	Less Than or Equal To	
8'-0"	8'-0"	2
14'-0"	14'-0"	3
20'-0"	20'-0"	4
26'-0"	26'-0"	5
32'-0"	32'-0"	6

Walkway and Truss Grating width dimensions are nominal and may vary $\pm 1/2$ " based on available standard widths.



SECTION A-A

Notes: *Space WF6x5.40 brackets for efficiency and within limits shown:

- f = 12" maximum, 4" minimum (End of sign to \mathcal{C} of nearest bracket)
- g = 12" maximum, 4" minimum (End of walkway grating to \mathcal{C} of nearest support bracket)
- h = 6'-0" maximum (\mathcal{C} to \mathcal{C} of walkway support brackets, WF6x5.40)
- Maximum DMS weight = 4000LBS
- 3'-9" maximum cabinet depth includes depth of cabinet plus connection to WF6x5.40.

**If walkway bracket at safety chain location is behind sign, add angle to bracket, see Alternate Safety Chain Attachment on Base Sheet OS-A-11-DMS2

For Section B-B and Grating Splice Details see Base Sheet OS-A-10-DMS2.
For Handrail Splice Details see Base Sheet OS-A-11-DMS2.

Handrail and walkway shall span a minimum of three brackets between splices and/or gap joints. Place all sign and walkway brackets as close to panel points as practical. Grating and handrail splices placed as needed.

Truss grating to facilitate inspection shall run full length (center to center of support frames) $\pm 1/2$ " on overhead trusses. Cost of truss grating is included in "Overhead Sign Structure"

PLOT DATE = #DATE#
 FILE NAME = #FILE#
 PLOT SCALE = #SCALE#
 USER NAME = #USER#
 S:\DOCUMENT\2626150\STRUCT\CON\5844867.SHT
 KAREN114R
 3-27-2005 14:05:04

DESIGNED	19
CHECKED	EXAMINED
DRAWN	PASSED
CHECKED	

ENGINEER OF STRUCTURAL SERVICES
ENGINEER OF BRIDGES AND STRUCTURES

NUMBER	REVISION	DATE

Structure Number	Station	a	b	c	d	Walkway Grating and Handrail Lengths
IS099I055R247.37	59+00	6'-8"	2'-6"	28'-8"	26'-8"	61'-10"
IS099I055R255.26	469+00	10'-5"	2'-6"	28'-8"	44'-11"	80'-1"

SHT. S-8 OF 15

REVISIONS	
NAME	DATE

ILLINOIS DEPARTMENT OF TRANSPORTATION
FAL ROUTE 55 (I-80 TO U.S. 30)
DYNAMIC MESSAGING SIGNS

**OVERHEAD SIGN STRUCTURE
ALTERNATE ALUMINUM WALKWAY
DETAILS FOR DMS**

SCALE: DRAWN BY MJK
DATE 03/27/06 CHECKED BY MJK

TENG TENG & ASSOCIATES, INC.
ENGINEERS/ARCHITECTS/PLANNERS
CHICAGO, ILLINOIS

OS-A-9-DMS2 1/7/2005