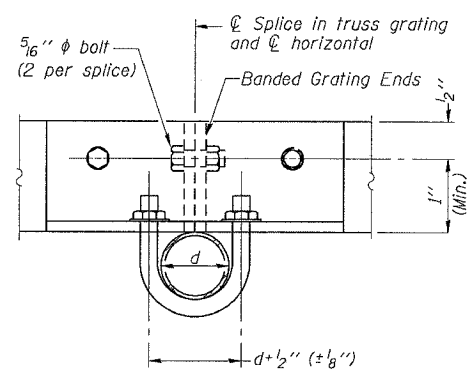
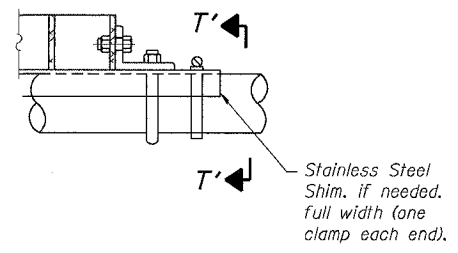
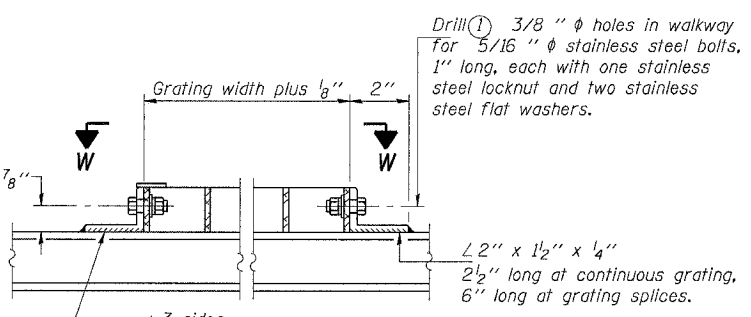
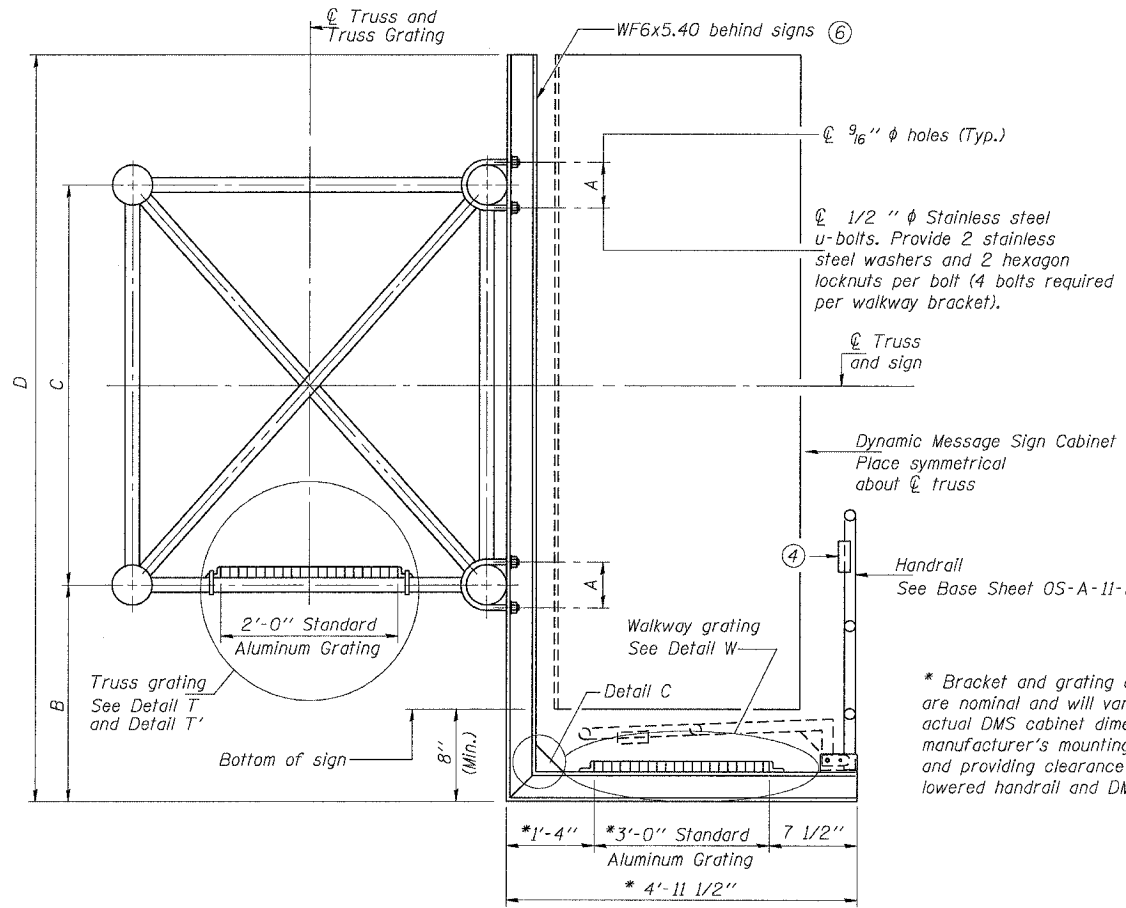


F.A.I. RTE.	SECTION	COUNTY	TOTAL SHEETS	SHEET NO.
55	2005-085 SG	WILL	28	16
STA.	TO STA.			
FED. ROAD DIST. NO.	ILLINOIS	FED. AID PROJECT		

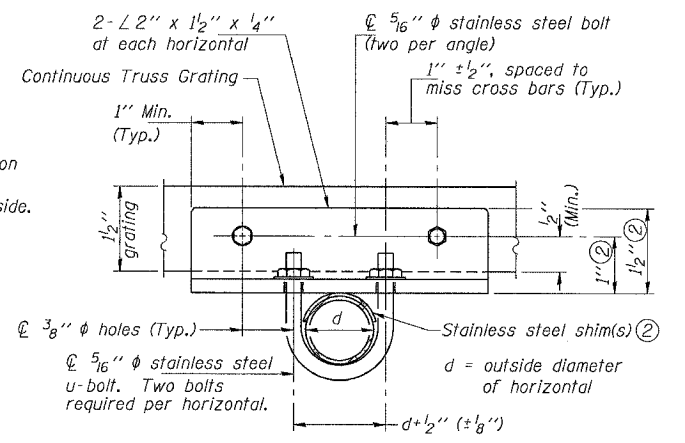
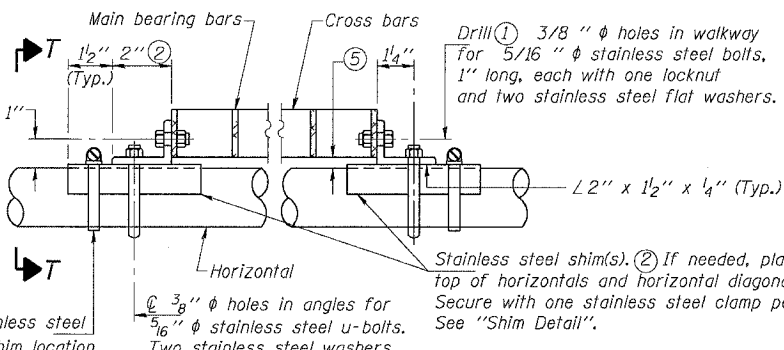
STATE OF ILLINOIS
DEPARTMENT OF TRANSPORTATION



DETAIL W
(Walkway grating)

DETAIL T'
(Truss grating splice)

SECTION T'-T'



DETAIL T
(Continuous Truss grating)

SPECIFICATIONS FOR STANDARD ALUMINUM GRATING

Main Bearing Bars shall be 3/8" x 1/2" on 1 3/16" centers and conform to ASTM B211 Alloy 6061-T6.
Cross bars shall be 3/8" x 1/2" on 4" centers and conform to ASTM B211 Alloy 6063-T5 or 6061-T6.

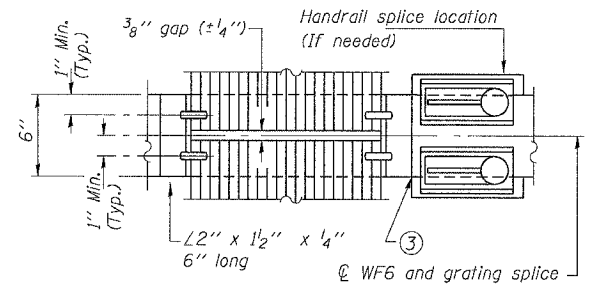
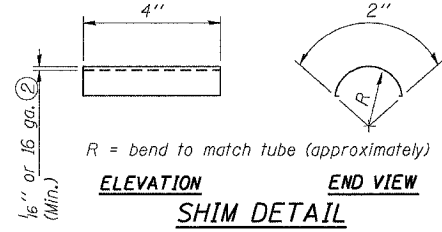
OR

Aluminum Grating with modified "T" sections for main bearing bars shall meet the following requirements:
Main bars shall conform to ASTM B211 Alloy 6061-T6 and have a minimum section modulus equal to 0.0705 in.³ per bar, a depth of 1 1/2", spaced on 1 3/16" centers.
Cross bars shall conform to ASTM B211 Alloy 6063-T5 or T-42 and spaced on 4" centers.

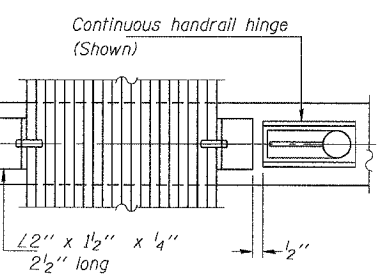
Structure Number	Station	A	B	C	D
IS0991055R247.37	59+00	8"	1'-8"	7'-0"	9'-8"
IS0991055R255.26	469+00	8"	1'-8"	7'-0"	9'-8"

- Drilling holes in grating may be done in shop or field, based on Contractor's preference and subject to accurate alignment.
- Stainless steel shims shall be placed as shown in Detail T if needed to compensate for alignment variations between horizontal and diagonal pipes beyond adjustment provided by angles. Thicker shims may be used subject to shims performing properly.
- If Handrail Joint present, weld angle to WF6 and 1/4" extension bars. (See Base Sheet OS-A-11-DMS2.)
- 1/8" x 1/2" x 2" welded to handrail posts to protect locations that contact grating.
- Tube to grating gap may vary from 0 to 1/2" max. to align walkway, allow for camber, etc.
- Cabinet manufacturer must design and supply hardware for connection of cabinet to WF6's. Bolts must be stainless steel or hot dip galvanized high strength per IDOT specifications.

SECTION B-B



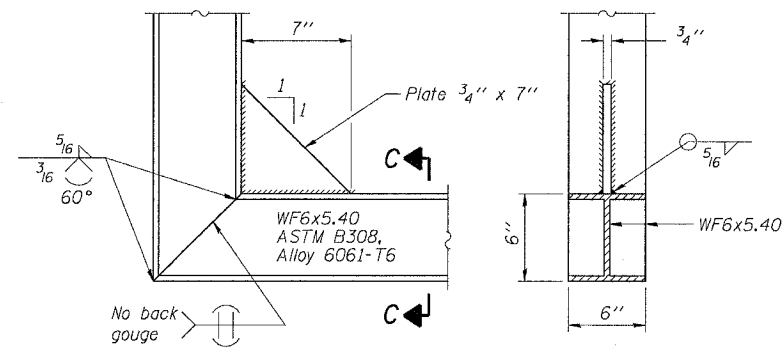
(AT WALKWAY GRATING SPLICE)



(CONTINUOUS WALKWAY GRATING)

SECTION W-W

SECTION C-C



DETAIL C

NUMBER	REVISION	DATE

DESIGNED		19
CHECKED		
DRAWN		
CHECKED		
EXAMINED		
PASSED		

SHT. S-9 OF 15

REVISIONS	
NAME	DATE

ILLINOIS DEPARTMENT OF TRANSPORTATION
FAI ROUTE 55 (I-80 TO U.S. 30)
DYNAMIC MESSAGING SIGNS

**OVERHEAD SIGN STRUCTURE
ALTERNATE ALUMINUM WALKWAY
DETAILS FOR DMS**

SCALE: DATE 03/27/06

DRAWN BY MRK
CHECKED BY MJK

TENG
TENG & ASSOCIATES, INC.
ENGINEERS/ARCHITECTS/PLANNERS
CHICAGO, ILLINOIS

PLT DATE = #DATE#
FILE NAME = #FILE#
PLOT SCALE = #SCALE#
USER NAME = #USER#

..SDP9148B2.D3D
3-27-2006, 14:05:15

KAREN.MR
S:\DOCUMENT\02261501\STRUCT\CON\SS9418B18.SHT