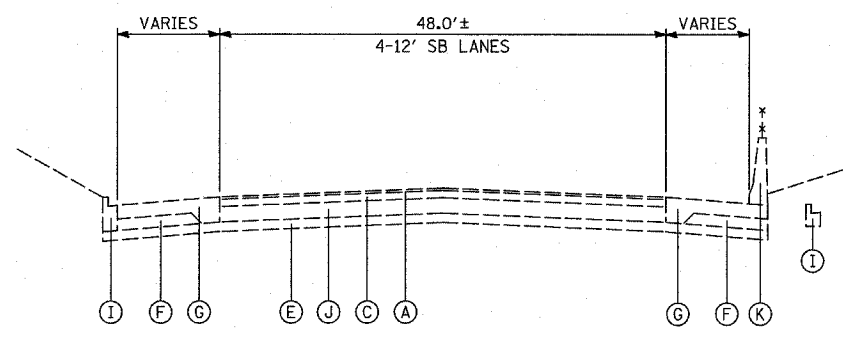
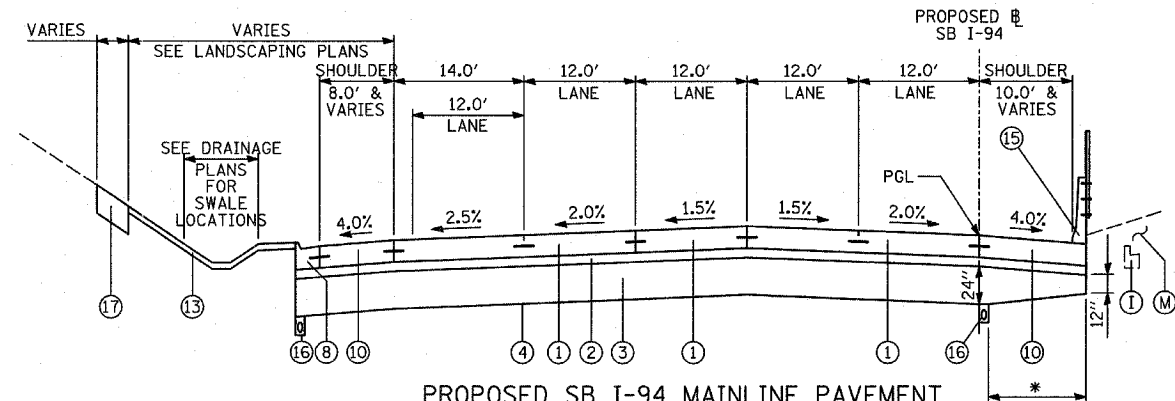


F.A.I. RTE.	SECTION	COUNTY	TOTAL SHEETS	SHEET NO.
94	1818 R-6	COOK	290	12
STA. 1313+00		TO STA. 1367+00		
FED. ROAD DIST. NO.	ILLINOIS	FED. AID PROJECT		

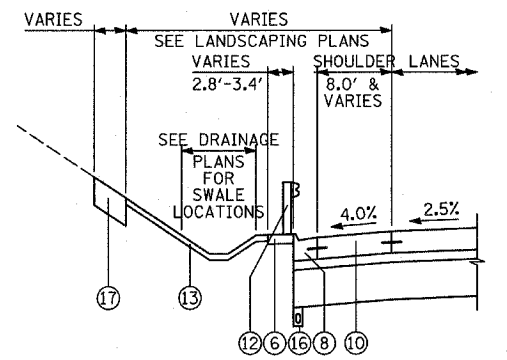
60B18



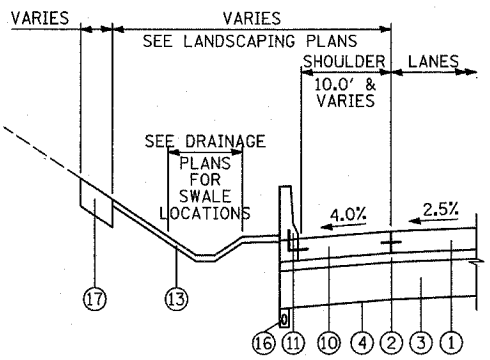
EXISTING SB I-94 MAINLINE PAVEMENT



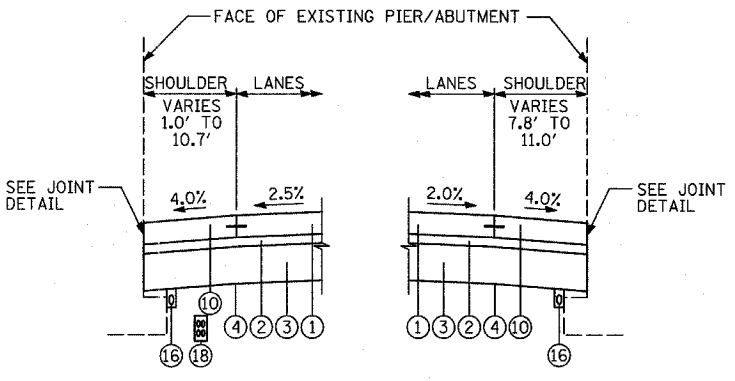
PROPOSED SB I-94 MAINLINE PAVEMENT
LOCATIONS VARY BETWEEN 95TH STREET AND 71st TO 75th C-D RAMPS



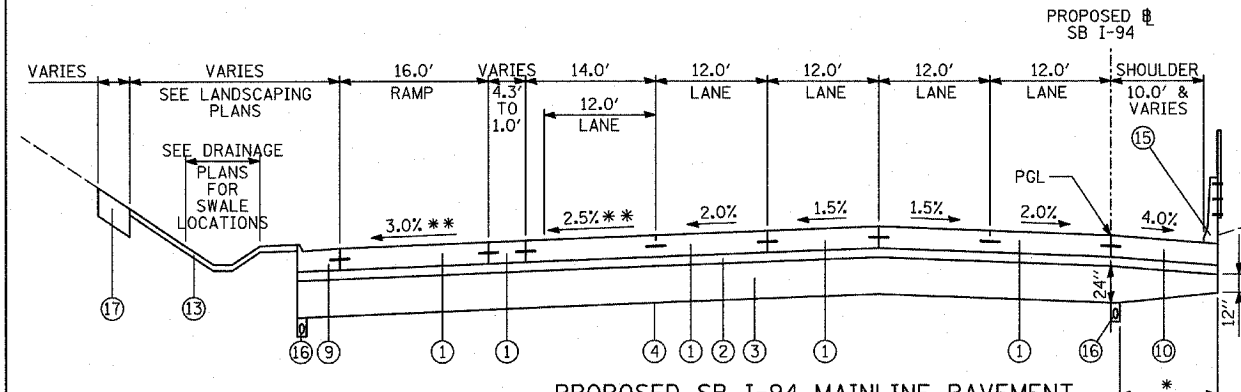
PROPOSED SB I-94 (DAN RYAN EXPWY)
ALTERNATE WEST PAVEMENT EDGE
TREATMENTS: GUARDRAIL
LOCATIONS VARY - SEE EXISTING/PROPOSED PLANS



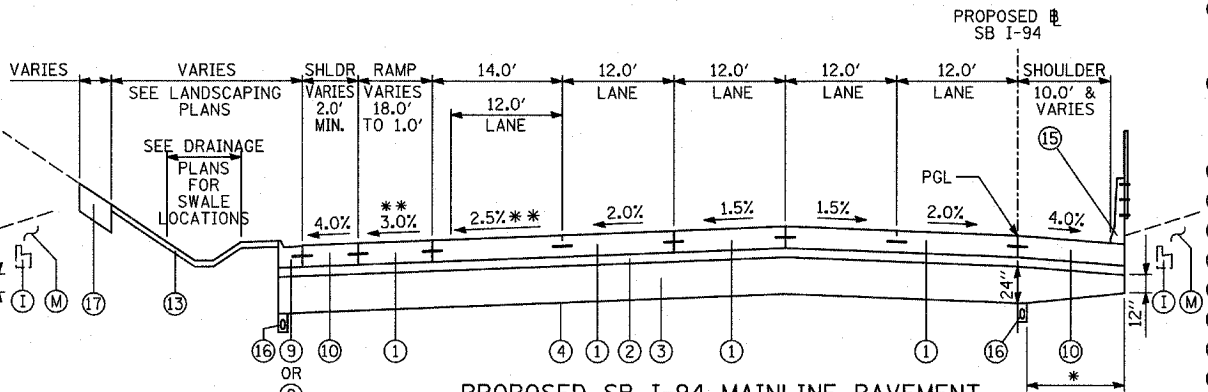
PROPOSED SB I-94 (DAN RYAN EXPWY)
ALTERNATE WEST PAVEMENT EDGE
TREATMENTS: CONCRETE BARRIER
LOCATIONS VARY - SEE EXISTING/PROPOSED PLANS



PROPOSED SB I-94 (DAN RYAN EXPWY)
ALTERNATE PAVEMENT EDGE
TREATMENTS: EXISTING PIER/ABUTMENT
LOCATIONS VARY AT BRIDGES - SEE EXISTING/PROPOSED PLANS FOR LOCATIONS AND CROSS-STREET OVERPASS FOOTING DETAILS FOR ADDITIONAL DETAIL



PROPOSED SB I-94 MAINLINE PAVEMENT
LOCATIONS VARY BETWEEN 95TH STREET AND 71st TO 75th C-D RAMPS



PROPOSED SB I-94 MAINLINE PAVEMENT
LOCATIONS VARY BETWEEN 95TH STREET AND 71st TO 75th C-D RAMPS

BITUMINOUS MIXTURE REQUIREMENT

ITEM	AC TYPE	VOIDS	RAP %
BITUMINOUS CONCRETE SURFACE COURSE, SUPERPAVE, MIX "D", N70	PG 64-22	4%±70 Gyr.	10
STABILIZED SUBBASE, 6"	PG 58-22	3%±50 Gyr.	25

THE UNIT WEIGHT USED TO CALCULATE ALL BITUMINOUS SURFACE MIXTURES IS 112 LB/SQ YD/IN.

NOTES:

- REFER TO PAVEMENT JOINTING AND ELEVATION PLANS FOR DESCRIPTIONS AND DETAILS OF PAVEMENT JOINTS.
- * - VARYING DEPTH PAID FOR AS "SUB-BASE GRANULAR MATERIAL, TYPE B 24"
- ** - CROSS-SLOPES VARY AT 87TH STREET ENTRANCE RAMP

PROPOSED LEGEND

- CONTINUOUSLY REINFORCED PORTLAND CEMENT CONCRETE PAVEMENT 14" & PAVEMENT REINFORCEMENT, 14"
- STABILIZED SUB-BASE, 6" (BITUMINOUS AGGREGATE MIXTURE)
- SUB-BASE GRANULAR MATERIAL, TYPE B 24"
- GEOTECHNICAL FABRIC FOR GROUND STABILIZATION
- CONCRETE MEDIAN SURFACE, 6 INCH (SPECIAL)
- CONCRETE MEDIAN SURFACE, 6 INCH (SPECIAL) (WITHOUT STAMPED PATTERN)
- COMBINATION CONCRETE CURB AND GUTTER, TYPE M-2.24
- COMBINATION CONCRETE CURB AND GUTTER, TYPE M-4.24
- COMBINATION CONCRETE CURB AND GUTTER, TYPE M-4.48
- PORTLAND CEMENT CONCRETE SHOULDERS 14"
- CONCRETE BARRIER, SINGLE FACE, 32 INCH HEIGHT; BARRIER BASE; BARRIER WALL MARKERS (PER IDOT STD. 635001 & 635006)
- TRAFFIC BARRIER TERMINAL, TYPE VARIES
- TOPSOIL FURNISH AND PLACE, 4"; SEEDING, CLASS 2A; EROSION CONTROL BLANKET
- AGGREGATE FILL (INCLUDED IN THE COST OF "CONCRETE MEDIAN SURFACE, 6" (SPECIAL)") (MATCH DEPTH TO ADJACENT CURB & GUTTER)
- CONCRETE BARRIER, SINGLE FACE, 42 INCH HEIGHT (SPECIAL); BARRIER BASE; CTA FENCE (SEE DETAILS); BARRIER WALL MARKERS (PER IDOT STD. 635001 & 635006)
- PIPE UNDERDRAIN, 6" (SEE DETAILS)
- TOPSOIL FURNISH AND PLACE, 12"; COMPOST FURNISH AND PLACE, 6"; EROSION CONTROL BLANKET; SEEDING (SEE PLAN FOR CLASS)
- ELECTRICAL DUCTBANK (SEE ELECTRICAL INFRASTRUCTURE PLANS)
- CONCRETE BARRIER, SINGLE FACE, 32 INCH HEIGHT (MODIFIED); BARRIER BASE; BARRIER WALL MARKERS (PER IDOT STD. 635001 & 635006)
- PORTLAND CEMENT CONCRETE SHOULDERS 9"
- 1/2" SHOULDER RESURFACING: BITUMINOUS CONCRETE SURFACE COURSE, SUPERPAVE, MIX "D", N70, 1/2"
- 1 3/4" SHOULDER RESURFACING: BITUMINOUS CONCRETE SURFACE COURSE, SUPERPAVE, MIX "D", N70, 1 3/4"
- 1 3/4" MAINLINE RESURFACING: POLYMERIZED BITUMINOUS CONCRETE SURFACE COURSE, SUPERPAVE, MIX "F", N105, 1 3/4"
- 4" MAINLINE RESURFACING: POLYMERIZED BITUMINOUS CONCRETE SURFACE COURSE, SUPERPAVE, MIX "F", N105, 1 3/4"; POLYMERIZED BITUMINOUS CONCRETE BINDER COURSE, SUPERPAVE, IL-19, N105, 2 1/4"
- PORTLAND CEMENT CONCRETE PAVEMENT, 14" (JOINTED)

EXISTING LEGEND ALL EXISTING PAVEMENT DEPTHS ARE FROM AS-BUILT PLANS AND ARE SUBJECT TO CHANGE

- BIT CONC SURFACE COURSE, 1 1/2"±
- BIT CONC BINDER COURSE, 1 1/2"±
- BIT CONC BINDER COURSE, 4 3/4"±
- SUB-BASE GRANULAR MATERIAL, 4"±
- SUB-BASE GRANULAR MATERIAL, 6"±
- CRUSHED STONE, 5"±
- PCC SHOULDERS, 9"±
- PCC SHOULDERS, 11"±
- PCC BASE COURSE, 9"±
- COMB CONC CURB & GUTTER
- PCC PAVEMENT, 10"± (W/ PAVEMENT FABRIC, 80 LBS±/100 SF)
- CONCRETE BARRIER WALL
- PCC SHOULDERS, 11"±
- CTA BALLAST STONE; REGRADE AS NECESSARY (INCLUDE REGADING IN THE COST OF "CONCRETE BARRIER, SINGLE FACE, 42 INCH HEIGHT (SPECIAL)")
- JOINTED PCC PAVEMENT, 11"±
- STABILIZED SUB-BASE, 4"±
- SUB-BASE GRANULAR MATERIAL, 24"±
- SUB-BASE GRANULAR MATERIAL, 12"±

REVISIONS	
NAME	DATE

ILLINOIS DEPARTMENT OF TRANSPORTATION
F.A.I. 94 (DAN RYAN EXPRESSWAY)
**EXISTING & PROPOSED TYPICAL SECTIONS
SB I-94 (DAN RYAN EXPRESSWAY)
(SHEET 1 OF 2)**
SCALE: NONE
DATE: MARCH 1, 2006
DRAWN BY: MPG
CHECKED BY: TGB

TYLIN INTERNATIONAL