

F.A.I. RTE.	SECTION	COUNTY	TOTAL SHEETS	SHEET NO.
94	1818 R-6	COOK	290	90
STA. 1313+00		TO STA. 1367+00		
FED. ROAD DIST. NO.	ILLINOIS	FED. AID PROJECT		

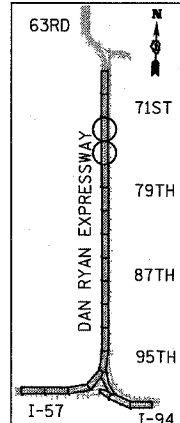
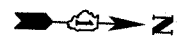
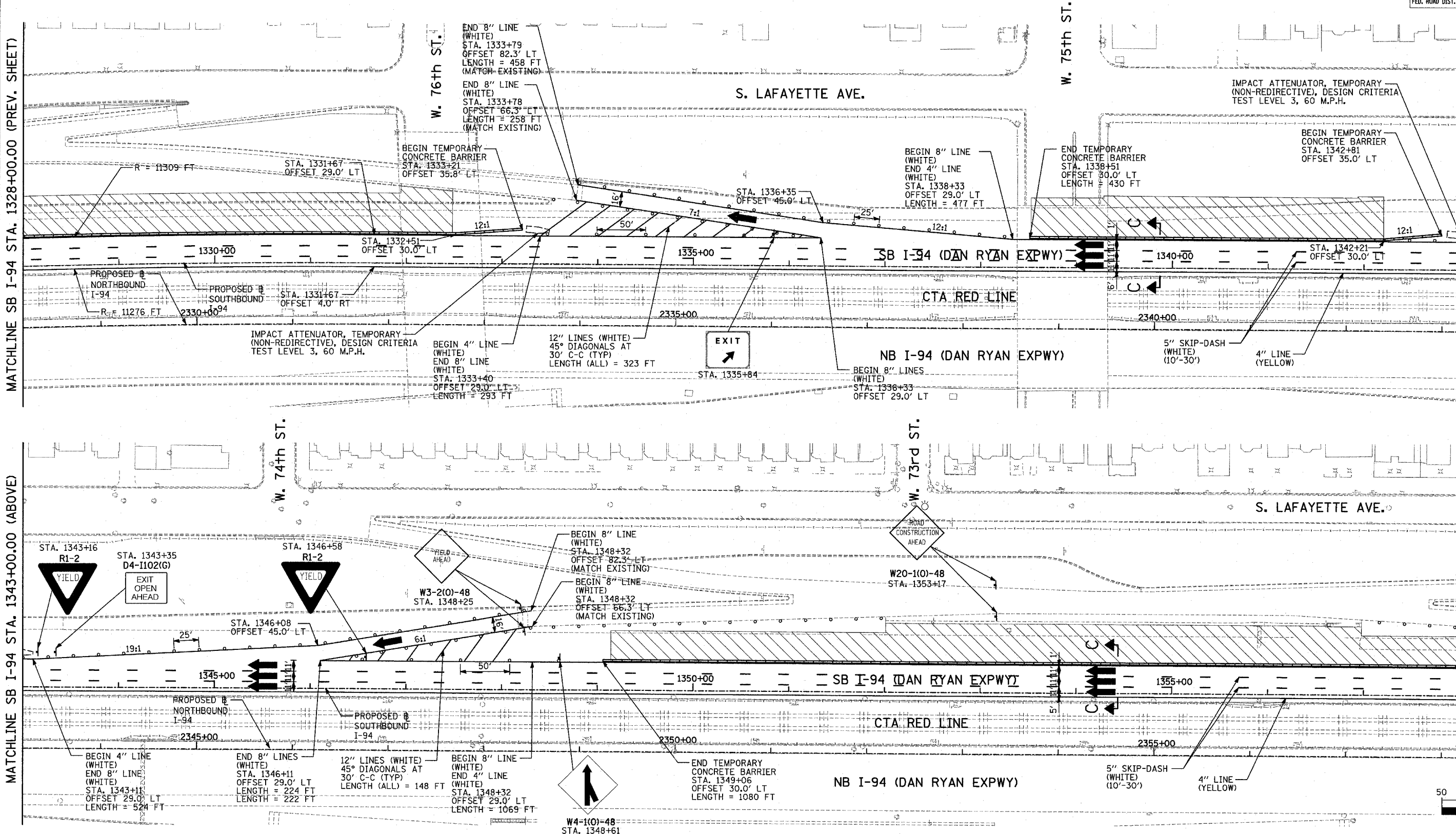
60B18

MATCHLINE SB I-94 STA. 1328+00.00 (PREV. SHEET)

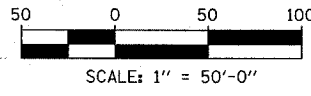
MATCHLINE SB I-94 STA. 1343+00.00 (BELOW)

MATCHLINE SB I-94 STA. 1343+00.00 (ABOVE)

MATCHLINE SB I-94 STA. 1358+00.00 (NEXT SHEET)



LOCATION MAP



LEGEND:

- TEMPORARY CONCRETE BARRIER
- TRAFFIC LANE
- WORK ZONE
- BARRICADE, TYPE III
- DRUM WITH MONO-DIRECTIONAL STEADY BURNING LIGHT
- ARROW BOARD
- TEMPORARY PAVEMENT

REVISIONS	
NAME	DATE

ILLINOIS DEPARTMENT OF TRANSPORTATION
 F.A.I. 94 (DAN RYAN EXPRESSWAY)
 MAINTENANCE OF TRAFFIC PLAN
 STAGE 1 - SB I-94
 SB I-94 STA. 1328+00 TO 1358+00
 SHEET 2 OF 3

SCALE: 1"=50'-0"
 DATE: MARCH 1, 2006
 DRAWN BY: JDF
 CHECKED BY: RTM

TYLIN INTERNATIONAL