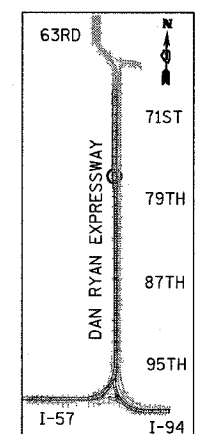
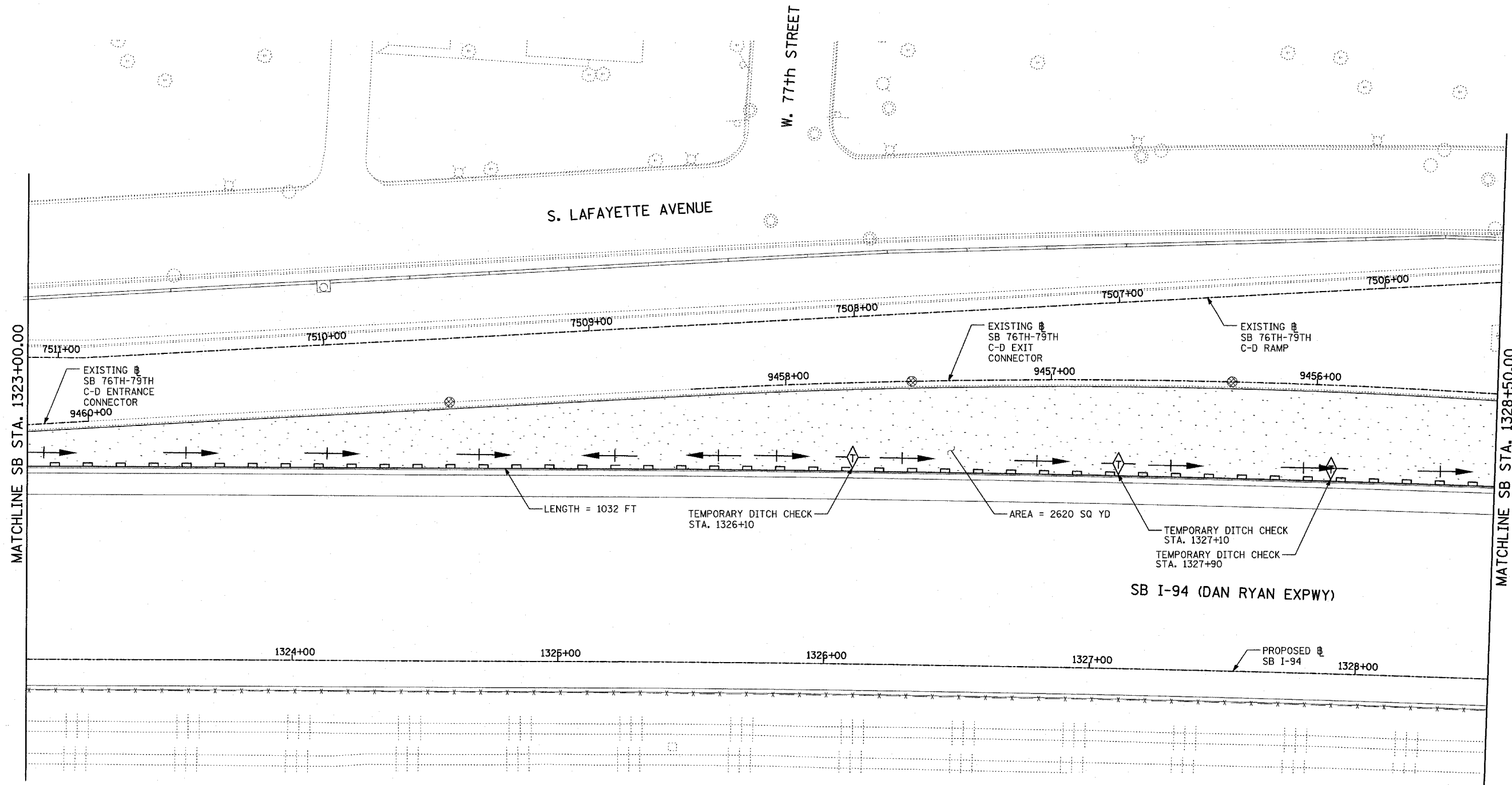
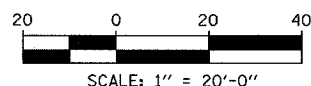


F.A.I. RTE.	SECTION	COUNTY	TOTAL SHEETS	SHEET NO.
94	1818 R-6	COOK	290	107
STA. 1313+00		TO STA. 1367+00		
FED. ROAD DIST. NO.	ILLINOIS	FED. AID PROJECT		

60B18



LOCATION MAP



- LEGEND:**
- TEMPORARY EROSION CONTROL SEEDING
 - SEDIMENT CONTROL, SILT FENCE
 - INLET FILTER, TO BE INSTALLED IN OFF PROJECT DRAINAGE STRUCTURES ACCEPTING STORMWATER RUNOFF
 - TEMPORARY FENCE
 - TEMPORARY DITCH CHECK
 - PROPOSED DRAINAGE SWALE (SEE DRAINAGE PLANS)
 - EXISTING DRAINAGE SWALE
 - TEMPORARY FENCE FOR TREE PROTECTION (15 FEET PER SIDE = 60 FEET TOTAL)

REVISIONS	
NAME	DATE

ILLINOIS DEPARTMENT OF TRANSPORTATION
F.A.I. 94 (DAN RYAN EXPRESSWAY)
EROSION CONTROL PLAN
SB I-94 (DAN RYAN EXPRESSWAY)
STA. 1323+00.00 TO 1328+50.00
SHEET 3 OF 11

SCALE: 1"=20'
DATE: MARCH 1, 2006

DRAWN BY: JJS
CHECKED BY: MPG

TOTAL NUMBER OF INLET FILTERS THIS SHEET: 3
TOTAL NUMBER OF TEMPORARY DITCH CHECKS THIS SHEET: 3
TOTAL NUMBER OF TREES TO BE PROTECTED THIS SHEET: 0

TYLIN INTERNATIONAL