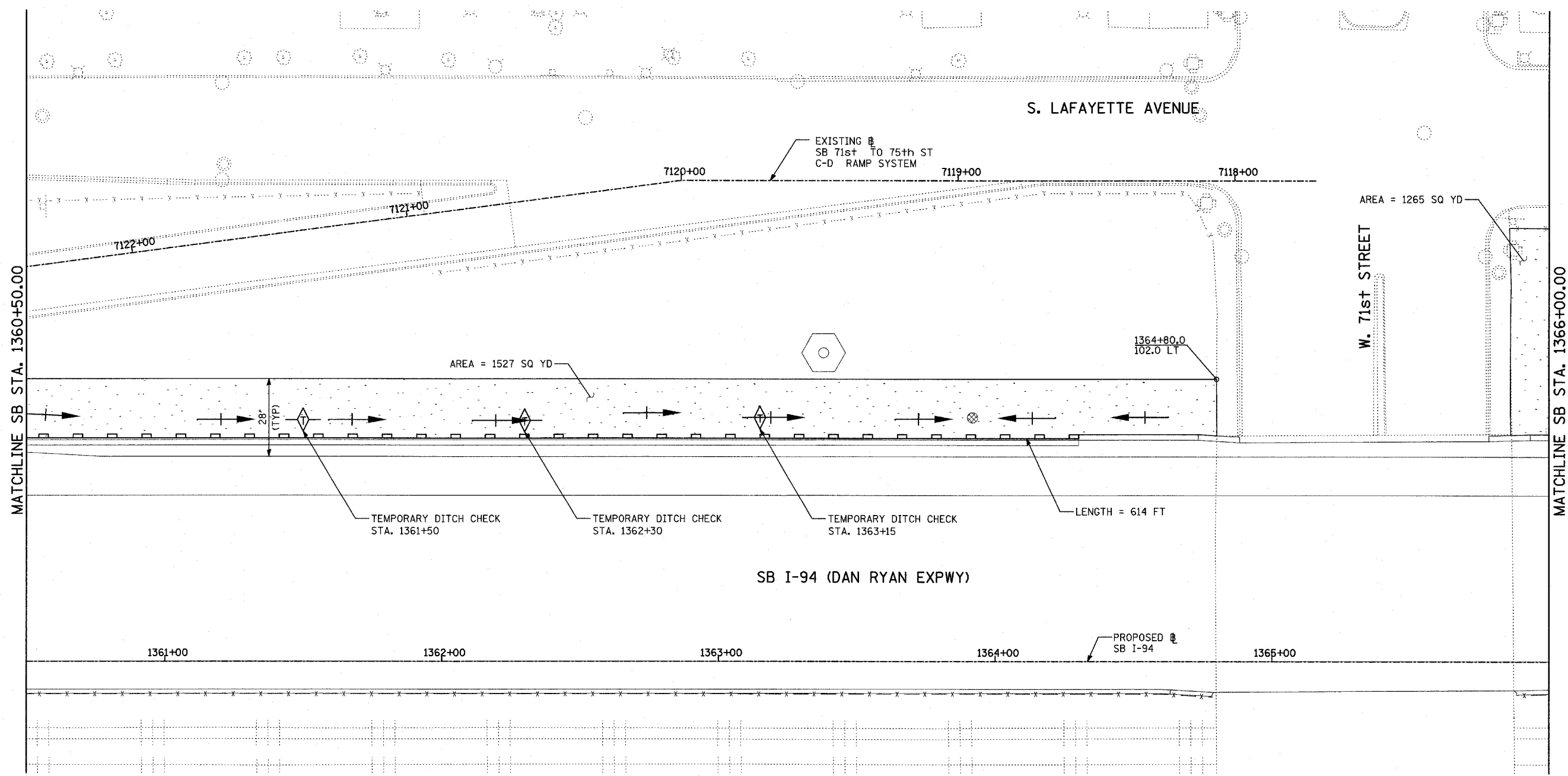


F.A.I. RTE.	SECTION	COUNTY	TOTAL SHEETS	SHEET NO.
94	1818 R-6	COOK	290	114
STA. 1313+00		TO STA. 1367+00		
FED. ROAD DIST. NO.	ILLINOIS	FED. AID PROJECT		

60B18



MATCHLINE SB STA. 1360+50.00

MATCHLINE SB STA. 1366+00.00

SB I-94 (DAN RYAN EXPWY)

AREA = 1265 SQ YD

AREA = 1527 SQ YD

1364+80.0  
102.0 LT

LENGTH = 614 FT

TEMPORARY DITCH CHECK  
STA. 1361+50

TEMPORARY DITCH CHECK  
STA. 1362+30

TEMPORARY DITCH CHECK  
STA. 1363+15

1361+00

1362+00

1363+00

1364+00

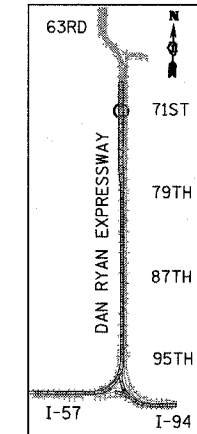
1365+00

PROPOSED SB I-94

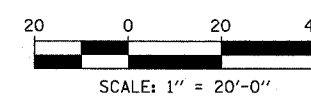
**LEGEND:**

- TEMPORARY EROSION CONTROL SEEDING
- SEDIMENT CONTROL, SILT FENCE
- INLET FILTER, TO BE INSTALLED IN OFF PROJECT DRAINAGE STRUCTURES ACCEPTING STORMWATER RUNOFF
- TEMPORARY FENCE
- TEMPORARY DITCH CHECK
- PROPOSED DRAINAGE SWALE (SEE DRAINAGE PLANS)
- EXISTING DRAINAGE SWALE
- TEMPORARY FENCE FOR TREE PROTECTION (15 FEET PER SIDE = 60 FEET TOTAL)

TOTAL NUMBER OF INLET FILTERS THIS SHEET: 1  
 TOTAL NUMBER OF TEMPORARY DITCH CHECKS THIS SHEET: 3  
 TOTAL NUMBER OF TREES TO BE PROTECTED THIS SHEET: 0



LOCATION MAP



REVISIONS	
NAME	DATE

ILLINOIS DEPARTMENT OF TRANSPORTATION  
 F.A.I. 94 (DAN RYAN EXPRESSWAY)  
 EROSION CONTROL PLAN  
 SB I-94 (DAN RYAN EXPRESSWAY)  
 STA. 1360+50.00 TO 1366+00.00  
 SHEET 10 OF 11

SCALE: 1"=20'  
 DATE: MARCH 1, 2006

DRAWN BY: JJS  
 CHECKED BY: MPG

**TYLIN** INTERNATIONAL