

DRAINAGE STRUCTURE SCHEDULE

STRUCTURE NUMBER	STATION	OFFSET	STRUCTURE TYPE		DIA.	FRAME & LID	TOP OF FRAME	N INV.	E INV.	S INV.	W INV.
			MH	CB							
351	1314+34.95	6.3 RT		A(7)	4'	T20 F&G	-6.43				-13.08
352	1314+35.58	68.5 LT		A	4'	T20 F&G	-7.54	-13.37	-13.37		-13.37
353	1314+23.55	73.8 LT		C	2'	T1F OL	-5.73	-11.61			
354	1314+36.46	75.3 LT	A		5'	T1F CL	-5.15	-15.99	-13.39	-11.65	
355	1315+37.42	81.2 LT	A		5'	T1F CL	-4.67	-16.28	-12.57	-16.28	
356	1314+50.26	68.1 LT		A	4'	T20 F&G	-7.38			-13.32	
357	1315+37.12	6.5 RT		A(7)	4'	T20 F&G	-5.21				-11.97
358	1315+37.31	72.6 LT		A	4'	T20 F&G	-6.44		-12.29		-12.54
359	1317+07.73	10.0 RT		A(7)	4'	T20 F&G	-3.31				-10.09
3510	1317+07.71	79.4 LT		A	4'	T20 F&G	-4.60	-10.45	-10.45	-10.70	
3511	1316+50.48	82.2 LT		C	2'	T1F OL	-4.91			-9.32	
371	1318+70.77	10.0 RT		A(7)	4'	T20 F&G	-1.64				-7.82
372	1320+55.68	68.0 LT		A	4'	T1F OL	-0.94	-7.21	-7.21		-7.21
373	NOT USED	-	-	-	-	-	-	-	-	-	-
374	1320+55.69	8.6 RT		A(7)	4'	T20 F&G	-0.43				-6.90
375	1321+23.99	70.0 LT		A	4'	T20 F&G	-0.65			-6.92	
376	NOT USED	-	-	-	-	-	-	-	-	-	-
377	1317+89.83	81.6 LT		A	4'	T20 F&G	-3.78			-10.11	
391	1324+30.91	10.0 RT		A(7)	4'	T20 F&G	-0.58				-5.63
392	1324+31.44	72.0 LT		A	4'	T20 F&G	-0.53		-5.96		-5.96
393	1326+19.17	10.0 RT		A(7)	4'	T20 F&G	-1.85				-6.97
394	1326+26.42	72.0 LT		A	4'	T20 F&G	-0.97		-7.30		
395	1328+11.39	10.0 RT		A(7)	4'	T20 F&G	-3.99				-9.08
396	1328+11.28	72.0 LT		A	4'	T20 F&G	-3.04		-9.41		
411	1330+05.38	9.8 RT		A(7)	4'	T20 F&G	-6.51				-12.61
412	1330+05.19	72.0 LT		A	4'	T20 F&G	-5.56		-12.94		-12.94
413	1331+78.52	10.0 RT		A(7)	4'	T20 F&G	-8.76				-13.87
414	1331+74.86	72.0 LT		A	4'	T20 F&G	-8.03		-14.20		
415	1333+49.78	10.0 RT		A(7)	4'	T20 F&G	-10.95				-16.07
431	1334+90.69	10.0 RT		A(7)	4'	T20 F&G	-11.74	-17.00			
432	1335+10.69	10.0 RT		A(7)	4'	T20 F&G	-11.74			-17.00	
433	1335+00.69	10.0 RT		A(7)	4'	T20 F&G	-11.74	-17.03		-17.03	-17.03
434	NOT USED	-	-	-	-	-	-	-	-	-	-
435	1335+32.08	79.9 LT		C	2'	T1F OL	-11.72		-18.04		
436	1336+06.22	10.0 RT		A(7)	4'	T20 F&G	-11.36				-16.98
437	1336+06.23	72.0 LT		A	4'	T20 F&G	-11.66		-17.31	-17.31	-17.31
438	1366+06.00	76.7 LT	A		4'	T1F CL	-9.37	-17.32	-17.32	-17.32	
439	1337+76.63	10.0 RT		A(7)	4'	T20 F&G	-9.99				-16.16
4310	1337+76.64	72.0 LT		A	4'	T20 F&G	-10.34		-16.49		-16.49
4311	1337+70.46	77.5 LT	A		4'	T1F CL	-8.10		-16.52	-16.52	
4312	1334+34.10	81.5 LT		A	4'	T20 F&G	-12.16				-17.52
4313	1335+49.68	72.0 LT		A	4'	T20 F&G	-11.96	-17.08			
451	1339+47.70	10.0 RT		A(7)	4'	T20 F&G	-8.63				-14.47
452	1339+47.69	72.0 LT		A	4'	T20 F&G	-8.95	-15.05	-14.80		
453	1340+50.01	80.0 LT		C	2'	T1F OL	-8.30			-13.19	
454	NOT USED	-	-	-	-	-	-	-	-	-	-
455	1341+11.63	10.0 RT		A(7)	4'	T20 F&G	-7.31				-13.13
456	1341+11.64	72.0 LT		A	4'	T20 F&G	-7.61		-13.46		-13.71
457	1341+11.64	81.5 LT	A		5'	T1F CL	-7.79	-18.09	-13.74	-18.09	
458	1343+49.82	10.0 RT		A(7)	4'	T20 F&G	-5.41				-10.50
459	NOT USED	-	-	-	-	-	-	-	-	-	-
4510	1343+49.84	81.4 LT	A(6)		5'	T1F CL	-6.12	-16.89	-10.86	-17.39	
471	1345+29.36	83.9 LT		C	2'	T1F OL	-4.30			-9.94	
472	1345+19.32	76.0 LT		A	4'	T20 F&G	-4.46				-10.29
473	1345+15.52	85.4 LT	A		4'	T1F CL	-4.74	-9.99	-10.33	-16.25	
474	1345+81.77	10.0 RT		A(7)	4'	T20 F&G	-3.55				-8.86

STORM SEWER SCHEDULE

PIPE NUMBER	UPSTREAM STATION	DOWNSTREAM STATION	TYPE	DIA. (IN)	LENGTH (FT)	SLOPE %	T.B. (CU.YD)
351	1314+34.95	1314+35.58	2	12	67	0.44	19.4
352	1314+35.58	1314+36.46	2	12	5	0.44	1.4
353	1314+23.55	1314+36.46	2	12	10	0.44	0.0
354	1314+36.46	1315+37.42	2	24	96	0.30	0.0
355	1315+37.42	1316+01.84	3	24	60	0.30	0.0
356	1314+50.26	1314+35.58	2	12	11	0.44	3.2
357	1315+37.12	1315+37.31	2	12	72	0.44	20.8
358	1315+37.31	1315+37.42	2	15	7	0.44	1.3
359	1317+07.73	1317+07.71	2	12	82	0.44	23.7
3510	1317+07.71	1316+86.53	2	15	19	0.44	6.3
3511	1316+50.48	1316+01.84	2	12	45	0.44	0.0
371	1318+70.77	1318+70.56	2	12	80	0.44	23.1
372	NOT USED	-	-	-	-	-	-
373	NOT USED	-	-	-	-	-	-
374	1320+55.69	1320+55.68	2	12	71	0.44	20.5
375	1321+23.99	1320+55.68	2	12	65	0.44	18.8
376	NOT USED	-	-	-	-	-	-
377	1317+89.83	1317+07.71	2	12	78	0.44	22.5
391	1324+30.91	1324+31.44	2	12	74	0.44	21.4
392	1324+31.44	1324+35.40	2	12	4	0.44	1.2
393	1326+19.17	1326+26.42	2	12	75	0.44	21.7
394	NOT USED	-	-	-	-	-	-
395	1328+11.39	1328+11.28	2	12	74	0.44	21.4
411	1330+05.38	1330+05.19	2	15	74	0.44	24.3
412	1330+05.19	1330+17.82	2	15	14	0.44	2.0
413	1331+78.52	1331+74.86	2	15	75	0.44	24.7
414	NOT USED	-	-	-	-	-	-
415	1333+49.78	1333+47.39	2	12	66	0.44	19.1
431	1334+90.69	1335+00.69	2	15	6	0.44	2.0
432	1335+10.69	1335+00.69	2	15	6	0.44	2.0
433	1335+00.69	1335+00.40	2	15	70	0.44	23.0
434	NOT USED	-	-	-	-	-	-
435	1335+32.08	1335+31.63	2	12	2	0.44	0.0
436	1336+06.22	1336+06.23	2	12	74	0.44	21.4
437	1336+06.23	1366+06.00	2	15	3	0.44	1.0
438	1366+06.00	1335+31.63	2	18	70	0.50	74.6
439	1337+76.63	1337+76.64	2	12	74	0.44	21.4
4310	1337+76.64	1337+70.46	2	15	6	0.44	2.0
4311	1337+70.46	1366+06.00	2	18	161	0.50	212.8
4312	1334+34.10	1334+34.79	2	12	7	0.44	1.2
4313	1335+49.68	1336+06.23	2	12	53	0.44	15.3
451	1339+47.70	1339+47.69	2	12	74	0.44	21.4
452	1339+47.69	1340+03.67	2	15	53	0.44	11.5
453	1340+50.01	1340+03.67	2	12	43	0.44	0.0
454	NOT USED	-	-	-	-	-	-
455	1341+11.63	1341+11.64	2	12	74	0.44	21.4
456	1341+11.64	1341+11.64	2	15	7	0.44	1.3
457	1341+11.64	1340+03.67	2	24	103	0.30	0.0
458	1343+49.82	1343+49.82	2	12	75	0.44	21.7
459	1343+49.82	1343+49.84	2	18	7	0.44	0.7
4510	1343+49.84	1341+11.64	2	24	234	0.30	0.0
471	1345+29.36	1345+15.52	2	12	11	0.44	0.0
472	1345+19.32	1345+15.52	2	12	9	0.44	0.9
473	1345+15.52	1343+49.84	3	18	162	0.40	0.0
474	1345+81.77	1345+81.87	2	12	74	0.44	21.4
475	1347+79.53	1347+79.54	2	12	79	0.44	22.8

F.A.I. RTE.	SECTION	COUNTY	TOTAL SHEETS	SHEET NO.
94	1818 R-6	COOK	290	144
STA. 1313+00		TO STA. 1367+00		
FED. ROAD DIST. NO.		ILLINOIS FED. AID PROJECT		

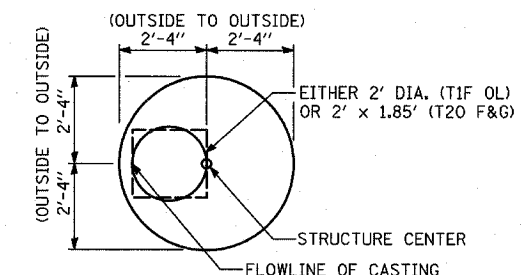
NOTES:

- INDICATES INLET TYPE A, 2' DIAMETER, TYPE 20 FRAME & GRATE.
- INDICATES MANHOLE, TYPE A, 6' DIAMETER, TYPE 1 FRAME, CLOSED LID, RESTRICTOR PLATE.
- INDICATES SEWER LATERAL WITH 45° CONNECTION. SEE SHEET "DETAIL OF STORM SEWER CONNECTIONS TO SEWER."
- INDICATES SEWER LATERAL WITH 30° CONNECTION. SEE SHEET "DETAIL OF STORM SEWER CONNECTIONS TO SEWER."
- INDICATES SEWER LATERAL WITH 60° CONNECTION. SEE SHEET "DETAIL OF STORM SEWER CONNECTIONS TO SEWER."
- INDICATES MANHOLE TYPE A WITH FLAT SLAB TOP, IDOT STANDARD 602601.
- INDICATES CATCH BASIN REQUIRING TEMPORARY SOIL RETENTION SYSTEM WITH INSTALLATION.
- ALL STRUCTURE ELEVATIONS IN RESURFACED AREAS COME FROM AERIAL SURVEY AND SHOULD BE VERIFIED IN THE FIELD AND ADJUSTED TO MATCH EXISTING CONDITIONS.

CASING SIZES

PIPE SIZE	CASING SIZE (OD)*	CASING WALL THICKNESS
12"	30"	0.500"
24"	42"	0.625"
30"	48"	0.688"
36"	48"	0.688"

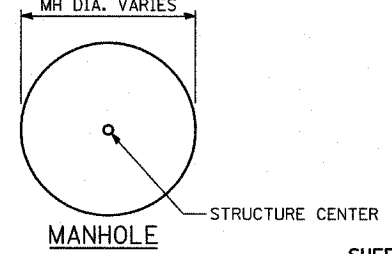
*ALL STEEL CASING SHALL MEET OR EXCEED ASTM A-139, GRADE B.
SEE THE DRAINAGE & UTILITY PLANS FOR LOCATION OF ALL STRUCTURES.
CATCH BASIN STATIONS ARE MEASURED TO CENTER OF STRUCTURE.
CATCH BASIN OFFSETS ARE MEASURED TO FLOWLINE OF CASTING. (SEE BELOW)
FLOWLINE OF CASTING IS LOCATED AT C/4 OF STRUCTURE FOR CATCH BASINS LOCATED IN SWALE AND GORE AREAS.



CATCH BASIN

(PRECAST REINFORCED CONCRETE SECTION)

MANHOLE STATIONS AND OFFSETS ARE MEASURED TO CENTER OF STRUCTURE. (SEE BELOW)



MANHOLE

REVISIONS	
NAME	DATE

ILLINOIS DEPARTMENT OF TRANSPORTATION
F.A.I. 94 (DAN RYAN EXPRESSWAY)
DRAINAGE STRUCTURE SCHEDULE
SCALE: NONE
DATE: MARCH 1, 2006
DRAWN BY: RD
CHECKED BY: DA

