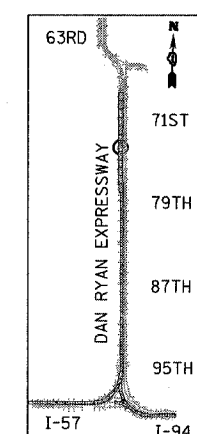
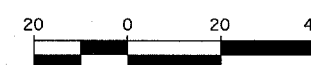


MATCHLINE SB STA. 1344+00.00

MATCHLINE SB STA. 1349+50.00



LOCATION MAP



SCALE: 1" = 20'-0"

PAVEMENT MARKING NOTES:

- PAVEMENT MARKINGS SHALL BE IN ACCORDANCE WITH IDOT DISTRICT ONE STANDARD TC-12. RAISED PAVEMENT MARKERS SHALL NOT BE INSTALLED, EXCEPT AS SHOWN ON THE PLANS.
- THE RESIDENT ENGINEER SHALL CONTACT JULIA FOX (847) 705-4151, EXPRESSWAY TRAFFIC CONTROL SUPERVISOR, PRIOR TO PLACING ANY PAVEMENT MARKINGS.

* MATCH WITH EXISTING PAVEMENT MARKING AT THIS POINT

TYLIN INTERNATIONAL

| REVISIONS | |
|-----------|------|
| NAME | DATE |
| | |
| | |
| | |
| | |
| | |
| | |
| | |
| | |
| | |
| | |

ILLINOIS DEPARTMENT OF TRANSPORTATION
 F.A.I. 94 (DAN RYAN EXPRESSWAY)
 PAVEMENT MARKING PLAN
 SB I-94 (DAN RYAN EXPRESSWAY)
 STA. 1344+00.00 TO 1349+50.00
 SHEET 7 OF 13

SCALE: 1"=20'
 DATE: MARCH 1, 2006
 DRAWN BY: JJS
 CHECKED BY: MPG