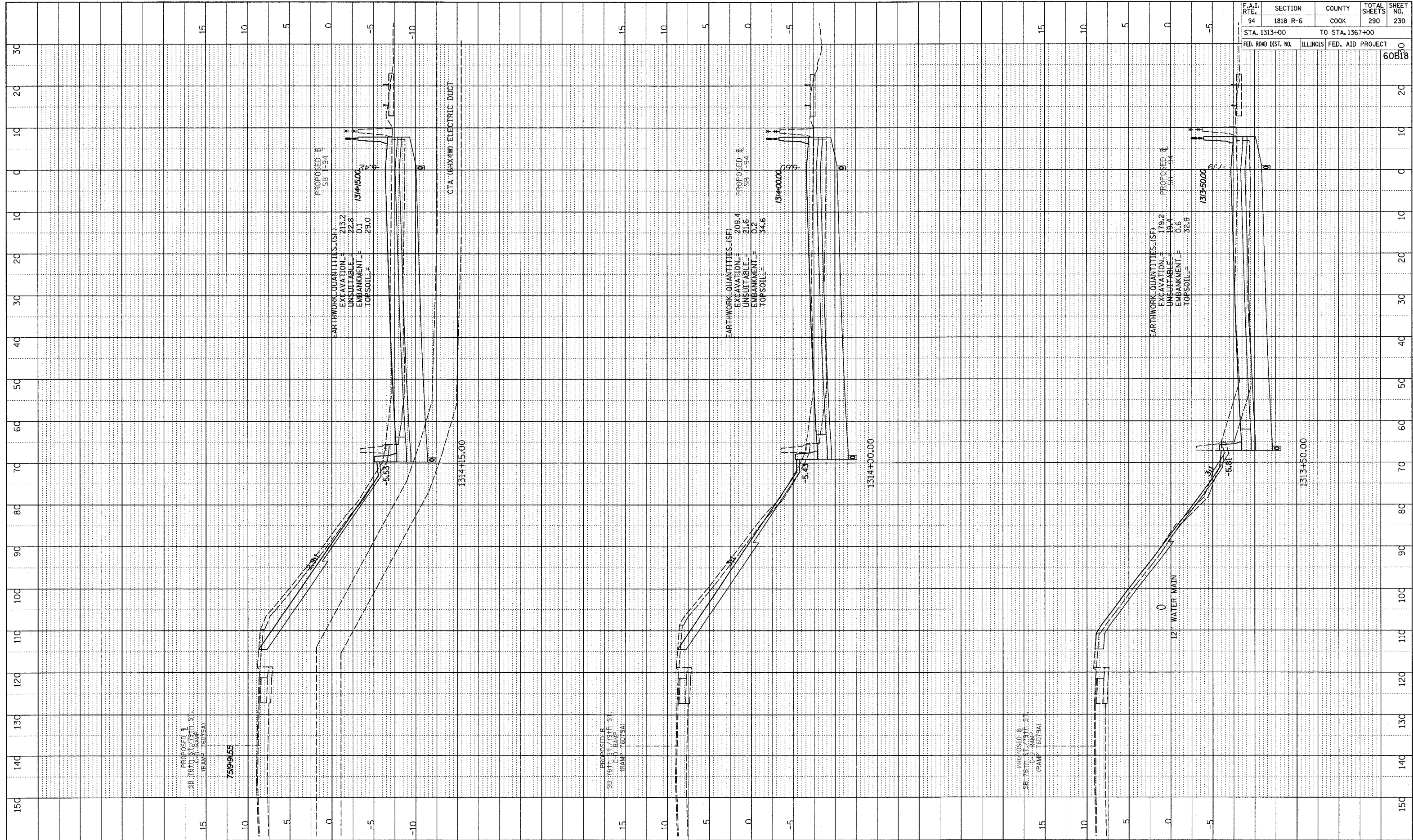
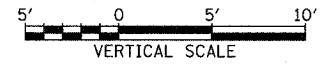


PROFILE SURVEYED  
 PLOTTED  
 NOTE BOOK  
 NO. \_\_\_\_\_

F.A.I. RTE.	SECTION	COUNTY	TOTAL SHEETS	SHEET NO.
94	1818 R-6	COOK	290	230
STA. 1313+00		TO STA. 1367+00		
FED. ROAD DIST. NO.		ILLINOIS	FED. AID PROJECT	
				60B18



TYLIN INTERNATIONAL



I-94 SOUTHBOUND (DAN RYAN EXPWY)  
 STA. 1313+50 TO STA. 1314+15

02/27/2006 12:45:56 PM P:\0227\3\road\230\gpk230\ss\h1679.dgn