

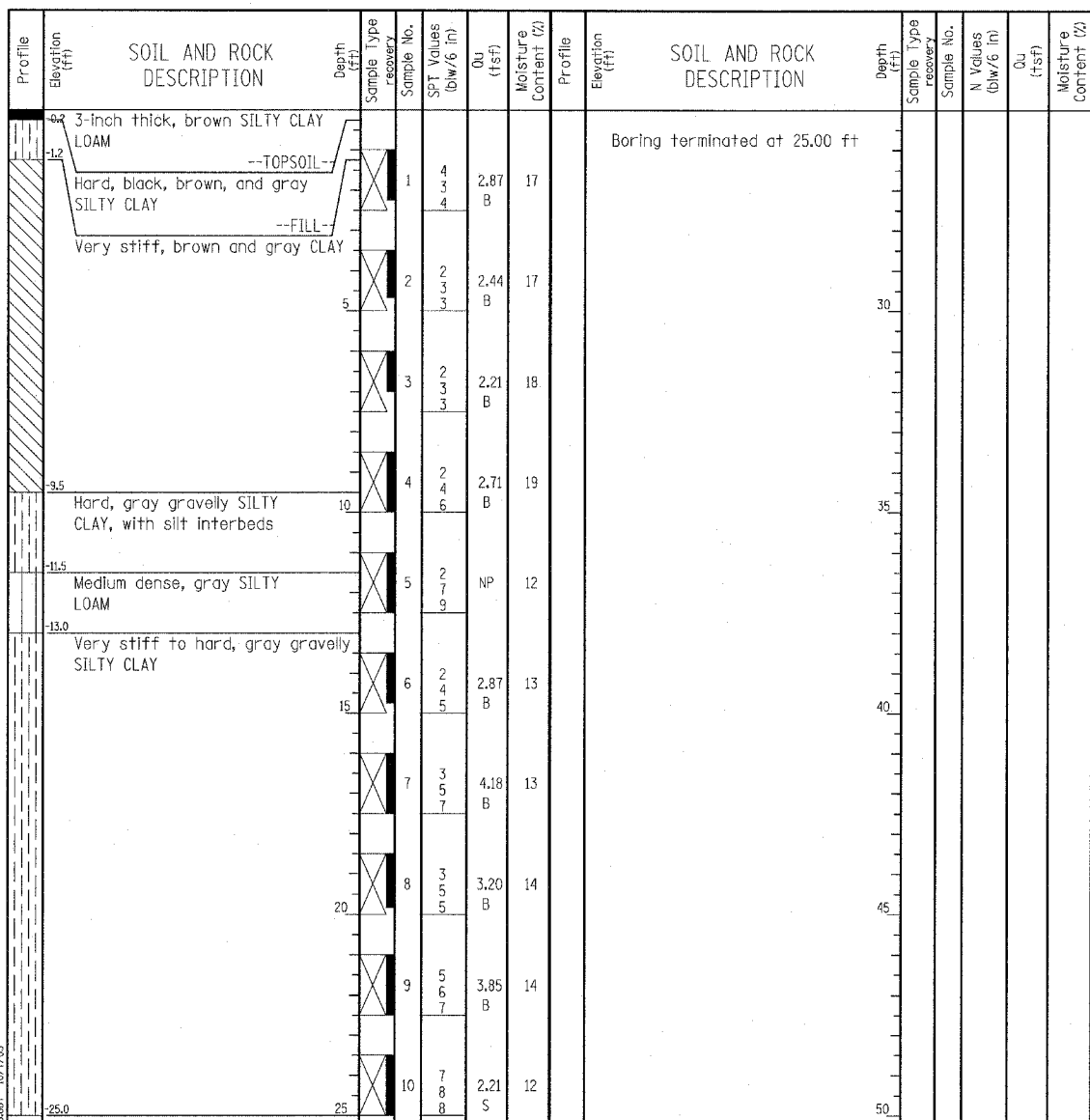
Wang Engineering, INC.
 Consulting Geotechnical and Environmental Engineers
 wangeng3@wangeng.com
 1145 Main Street
 Lombard, IL 60148
 Telephone: 630 953-9928
 Fax: 630 953-9938

BORING LOG SB SGN 22A

Page 1 of 1

WEI Job No.: 414-07-01
 Client: T. Y. LIN International
 Project: Dan Ryan Improvements; IDOT No. D-91-421-01
 Location: From 95th Street to South of 69th Street

Datum: CCD
 Elevation: 0.02 ft
 North: 1856975.63 ft
 East: 1177202.85 ft
 Station: 1355+91
 Offset: 73.5' LT



GENERAL NOTES				WATER LEVEL DATA			
Begin Drilling	02-17-2005	Complete Drilling	02-17-2005	While Drilling	∇	DRY	
Drilling Contractor	Patrick Drilling	Drill Rig	CME 75 TMR	At Completion of Drilling	∇	DRY	
Driller	K&A	Logger	J. Kasnick	Time After Drilling	NA		
Checked by	N. Davis	Drilling Method	3.25" ID, HSA; Boring backfilled with bentonite upon completion	Depth to Water	∇	NA	

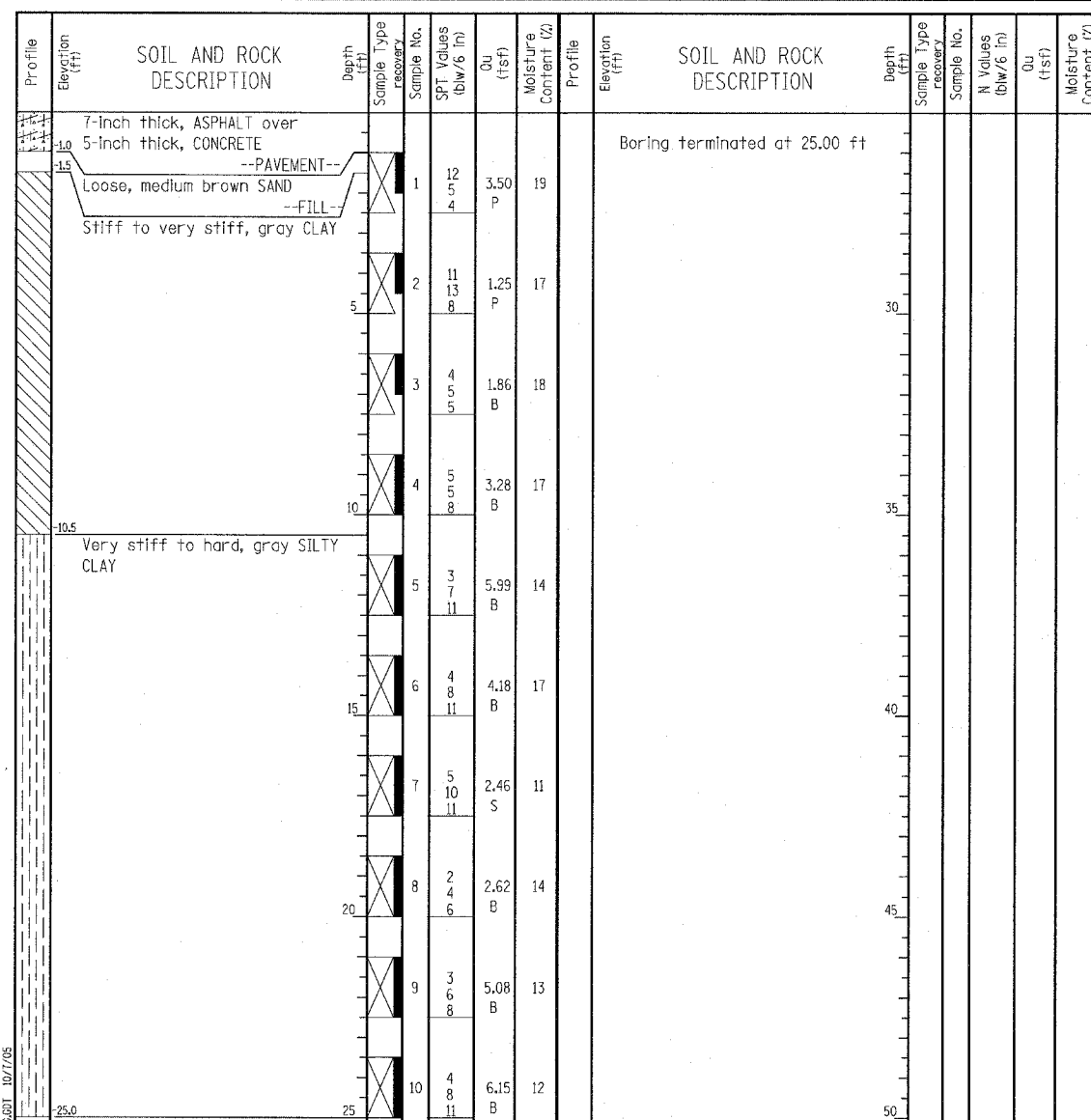
Wang Engineering, INC.
 Consulting Geotechnical and Environmental Engineers
 wangeng3@wangeng.com
 1145 Main Street
 Lombard, IL 60148
 Telephone: 630 953-9928
 Fax: 630 953-9938

BORING LOG SB SGN 22B

Page 1 of 1

WEI Job No.: 414-07-01
 Client: T. Y. LIN International
 Project: Dan Ryan Improvements; IDOT No. D-91-421-01
 Location: From 95th Street to South of 69th Street

Datum: CCD
 Elevation: 0.01 ft
 North: 1856975.48 ft
 East: 1177284.83 ft
 Station: 1355+91
 Offset: 12' RT



GENERAL NOTES				WATER LEVEL DATA			
Begin Drilling	04-11-2005	Complete Drilling	04-11-2005	While Drilling	∇	DRY	
Drilling Contractor	Patrick Drilling	Drill Rig	CME 75 TMR	At Completion of Drilling	∇	DRY	
Driller	J&L	Logger	H. Suhail	Time After Drilling	NA		
Checked by	N. Davis	Drilling Method	3.25" ID, HSA; Boring backfilled with bentonite upon completion	Depth to Water	∇	NA	

LEGEND

NP	NON-PLASTIC
B	BULGE FAILURE
S	SHEAR FAILURE
P	POCKET PENETROMETER

TYLIN INTERNATIONAL

REVISIONS	
NAME	DATE

ILLINOIS DEPARTMENT OF TRANSPORTATION
 F.A.I. 94 (DAN RYAN EXPRESSWAY)
 SOIL BORINGS SB SGN 22A & SB SGN 22B

SCALE: N.T.S. DRAWN BY: MPG
 DATE: MARCH 1, 2006 CHECKED BY: JPM