



**SUMMARY OF QUANTITIES**

URBAN  
100% FEDERAL

CONSTRUCTION CODE

CROSSING 290507T  
CENTER STREET  
100% HSR

CROSSING 290508A  
DIVISION STREET  
100% HSR

CODE NO.	ITEM	UNIT	TOTAL QUANTITY	CONSTRUCTION CODE	
				CROSSING 290507T CENTER STREET 100% HSR	CROSSING 290508A DIVISION STREET 100% HSR
				0004	0004
542A0220	PIPE CULVERTS, CLASS A, TYPE 1 15"	FOOT	235	25	210
542A0223	PIPE CULVERTS, CLASS A, TYPE 1 18"	FOOT	40	40	
542A0229	PIPE CULVERTS, CLASS A, TYPE 1 24"	FOOT	99	99	
542A1081	PIPE CULVERTS, CLASS A, TYPE 2 36"	FOOT	77	77	
542A5470	PIPE CULVERTS, CLASS A, TYPE 1 EQUIVALENT ROUND-SIZE 15"	FOOT	55	55	
550A0050	STORM SEWERS, CLASS A, TYPE 1 12"	FOOT	184	184	
550A0090	STORM SEWERS, CLASS A, TYPE 1 18"	FOOT	245	245	
550A0120	STORM SEWERS, CLASS A, TYPE 1 24"	FOOT	86	86	
550A0470	STORM SEWERS, CLASS A, TYPE 2 42"	FOOT	171	171	
55100700	STORM SEWER REMOVAL 15"	FOOT	270	82	188
55100900	STORM SEWER REMOVAL 18"	FOOT	231	231	
56100600	WATER MAIN 6"	FOOT	9		9
56100800	WATER MAIN 10"	FOOT	30		30
56106400	ADJUSTING WATER MAIN 8"	FOOT	60	60	

\* =SPECIALTY ITEM

FILE NAME: c:\temp\working\plan\_per\civil\transportation\plan\16781016236-41-500-CDM\INFD.dgn



USER NAME = Kim.Jarosz	DESIGNED - C.JG	REVISED -
PLOT SCALE = 40,0000' / in.	DRAWN - F.JS	REVISED -
PLOT DATE = 3/16/2016	CHECKED - JRP	REVISED -
	DATE - 03/16/2015	REVISED -

STATE OF ILLINOIS  
DEPARTMENT OF TRANSPORTATION

SUMMARY OF QUANTITIES

SCALE: NONE SHEET 6 OF 11 SHEETS STA. TO STA.

F.A.P. RTE.	SECTION	COUNTY	TOTAL SHEETS	SHEET NO.
846	DHSRR2016-05&06	WILL	292	10
CONTRACT NO. 62B36			ILLINOIS FED. AID PROJECT	

Rev. 6-1-16

**SUMMARY OF QUANTITIES**

URBAN  
100% FEDERAL

CONSTRUCTION CODE

CROSSING 290507T  
CENTER STREET

CROSSING 290508A  
DIVISION STREET

100% HSR

100% HSR

0004

0004

CODE NO.	ITEM	UNIT	TOTAL QUANTITY	CROSSING 290507T CENTER STREET 100% HSR	CROSSING 290508A DIVISION STREET 100% HSR
60266600	VALVE BOXES TO BE ADJUSTED	EACH	7 <sup>Δ</sup>	2	5 <sup>Δ</sup>
60500040	REMOVING MANHOLES	EACH	2	1	1
60600095	CLASS SI CONCRETE (OUTLET)	CU YD	6		6
60602800	CONCRETE GUTTER, TYPE B	FOOT	79		79
60605000	COMBINATION CONCRETE CURB AND GUTTER, TYPE B-6.24	FOOT	181	181	
60608300	COMBINATION CONCRETE CURB AND GUTTER, TYPE M-2.12	FOOT	292		292
60608600	COMBINATION CONCRETE CURB AND GUTTER, TYPE M-6.06	FOOT	102	102	
60610400	COMBINATION CONCRETE CURB AND GUTTER, TYPE M-6.24	FOOT	53	53	
60618300	CONCRETE MEDIAN SURFACE, 4 INCH	SO FT	1093	1093	
<del>63200310</del>	<del>GUARDRAIL REMOVAL</del>	<del>FOOT</del>	<del>183</del>	<del>183</del>	
* 66900200	NON-SPECIAL WASTE DISPOSAL	CU YD	375		375
* 66900450	SPECIAL WASTE PLANS AND REPORTS	LSUM	1		1
* 66900530	SOIL DISPOSAL ANALYSIS	EACH	2		2
67100100	MOBILIZATION	LSUM	1	0.5	0.5

\* =SPECIALTY ITEM

<sup>Δ</sup> Rev. 6-1-16

FILE NAME: c:\pwworking\AECOM\Projects\Illinois\2016\16-016-000-CONSTRUCTION.dwg



USER NAME = Kim.Jarosz	DESIGNED - CJG	REVISED -
PLOT SCALE = 40.0000' / 1"	DRAWN - FJS	REVISED -
PLOT DATE = 3/16/2016	CHECKED - JRP	REVISED -
	DATE - 03/16/2016	REVISED -

STATE OF ILLINOIS  
DEPARTMENT OF TRANSPORTATION

SUMMARY OF QUANTITIES

SCALE: NONE SHEET 8 OF 11 SHEETS STA. TO STA.

F.A.P. RIE.	SECTION	COUNTY	TOTAL SHEETS	SHEET NO.
846	DIHSRR2016-05&06	WILL	292	12
CONTRACT NO. 62636			ILLINOIS FED. AID PROJECT	







LANDSCAPING AND EROSION CONTROL																
STATION	STATION	ROADWAY	21101625 TOPSOIL F & P 6 (SQ YD)	25000210 SEEDING CL 2A (ACRE)	25000310 SEEDING CL 4 (ACRE)	25000400 NITROGEN FERT NUTR (POUND)	25000600 POTASSIUM FERT NUTR (POUND)	25100115 MULCH METHOD 2 (ACRE)	25100630 EROSION CONTR BLANKET (SQ YD)	25200110 SODDING, SALT TOLERANT (SQ YD)	25200200 SUPPLE WATERING (UNIT)	28000250 TEMP EROS CONTR SEED (POUND)	28000305 TEMP DITCH CHECKS (FOOT)	28000400 PERIMETER EROS BAR (FOOT)	28000510 INLET FILTERS (EACH)	20064800 SELECTIVE CLEARING (UNIT)
54+00	56+00	DIVISION	196	0.06	-	4	4	0.05	-	-	3	5	-	-	-	-
57+00	60+50	DIVISION	610	-	-	8	8	-	-	539	10	13	-	71	4	-
210+85	218+50	FRONT	2050	0.46	0.09	46	46	0.48	-	-	31	43	56	-	-	4
218+54	227+25	FRONT	3712	0.54	0.27	70	70	0.68	645	-	56	77	130	341	-	-
304+10	317+13	WASHINGTON	6672	1.08	0.34	125	125	1.10	1496	-	101	138	190	571	-	-
317+32	329+60	WASHINGTON	5727	0.99	0.24	107	107	0.85	1764	-	86	119	210	764	-	-
TOTALS			18967	3.25	1.00	360	360	3.25	3905	539	287	395	586	1747	4	4

CULVERT PIPES, END SECTIONS STORM SEWER, AND STORM STRUCTURES									
STATION	STATION	LOCATION	ROADWAY	20800150 TRENCH BACKFILL (CU YD)	542A0220 P CUL CL A 1 15 (FOOT)	54213680 PRC FLAR END SEC 15 (EACH)	20056610 STORM SEW WM REQ 15 (FOOT)	60211100 CB TD 3 DIA T8C (EACH)	60212300 CB TD 4 DIA T8C (EACH)
57+93.0	58+90.0	RT	DIVISION			1	93.5		
58+90.0	59+40.0	RT	DIVISION	5.5			47.5	1	
59+40.0	60+22.0	RT	DIVISION	8.0			79.0	1	
60+22.0	60+92.8	RT	DIVISION	9.1			67.5	1	1
210+85.0	225+45.0		FRONT						
225+45.0	225+77.0	RT	FRONT	2.5	32	2			
225+77.0	227+25.0		FRONT						
304+10.0	307+51.0		WASHINGTON						
307+51.0	307+81.0	LT	WASHINGTON		30	2			
307+81.0	322+78.5		WASHINGTON	1.9					
322+78.5	322+98.5	LT	WASHINGTON	2.1	20	2			
325+20.5	325+56.5	LT	WASHINGTON	3.0	36	2			
326+02.0	326+38.0	LT	WASHINGTON	3.1	36	2			
326+38.0	327+68.8		WASHINGTON						
327+68.8	327+94.8	LT	WASHINGTON	2.4	26	2			
328+86.0	329+16.0	LT	WASHINGTON	3.1	30	2			
329+16.0	329+50.0		WASHINGTON						
TOTALS				41	210	15	288	3	1

PUBLIC UTILITY ADJUSTMENTS												
STATION	LOCATION	ROADWAY	56100600 WATER MAIN 6 (FOOT)	56100800 WATER MAIN 10 (FOOT)	56300300 ADJ WATER SERV LINES (FOOT)	56400800 FIRE HYDRANTS AND VALVE TO BE MOVED (EACH)	56500600 DOM WAT SER BOX ADJ (EACH)	60266600 VALVE BOX ADJ (EACH)	X6026057 SAN MH REC NEW TIF CL (EACH)	XX007520 GATE VALVE & BOX REM (EACH)	XX007524 GATE VALVE & BOX 10 (EACH)	Z0067900 STEEL CASINGS 24 (FOOT)
56+79.3	0.92' RT	DIVISION										
56+99.7	16.45' LT	DIVISION										
58+86.5	16.15' RT	DIVISION			17		1					
59+34.7	16.3' RT	DIVISION			18		1	1				
59+46.5	15.8' RT	DIVISION					1	1				
59+58.5	12.4' RT	DIVISION					1	1				
59+81.9	13.8' RT	DIVISION			20		1					
60+01.1	14.5' RT	DIVISION			20		1					
60+75.6	14.0' RT	DIVISION			19		1					
60+75.8	15.3' RT	DIVISION			20		1					
221+45.0	29' RT	FRONT		20						4		10
221+46.5	42' RT	FRONT		10							4	
221+48.0	48' RT	FRONT	9			1						
317+64.3	18.6' LT	WASHINGTON										1
317+66.2	22.3' LT	WASHINGTON										1
TOTALS			9	30	114	1	6	5	2	4	4	10

PAVEMENT, CURB, SHOULDERS, AND BASE COURSE																			
STATION	STATION	LOCATION	ROADWAY	30300112 AGG SUBGRADE IMPR 12 (SQ YD)	35501314 HMA BASE CSE 7 1/2 (SQ YD)	35600706 HMA BC WID 7 1/2 (SQ YD)	40600290 BIT MATLS TACK CT (POUND)	40600635 LEV BIND MM N70 (TON)	40603340 HMA SC "D" N70 (TON)	40700100 BIT MATLS TACK CT (POUND)	40701826 HMA PAVT FD 7 1/4 (SQ YD)	40701886 HMA PAVT FD 10 1/4 (SQ YD)	44300200 STRIP REF CR CON TR (FOOT)	48203026 HMA SHOULDERS 7 1/4 (SQ YD)	48203038 HMA SHOULDERS 10 1/4 (SQ YD)	60600095 CLASS S1 CONC OUTLET (CU YD)	60602800 CONCRETE GUTTER, TYPE B (FOOT)	60608300 COMB CC&G TM2.12 (FOOT)	
53+17.7	59+64.0	MAINLINE	DIVISION	1764						761	1764								
210+85.0	227+25.0	MAINLINE	FRONT	414	228	186	3660	246	654	279			951			3	79		
304+10.0	329+60.0	MAINLINE	WASHINGTON	8271						5583		8271				3			292
53+17.7	59+64.0	SHLDS	DIVISION	564										453					
210+85.0	227+25.0	SHLDS	FRONT	1951											1586				
304+10.0	329+60.0	SHLDS	WASHINGTON	3878											3250				
54+55.8	54+65.6		DIVISION				20		5										
55+08.4	55+18.0		DIVISION				20		5										
TOTALS				16842	228	186	3700	246	664	6623	1764	8271	951	453	4836	6	79		292

PAVEMENT PATCHING									
STATION	STATION	CLASS D PATCHES T1 13 (SQ YD)	T2 13 (SQ YD)	T3 13 (SQ YD)	T4 13 (SQ YD)	CLASS D PATCHES T1 17 (SQ YD)	T2 17 (SQ YD)	T3 17 (SQ YD)	T4 17 (SQ YD)
210+85	218+80	15	35	50	50				
218+80	227+25					10	30	40	40
TOTAL		15	35	50	50	10	30	40	40

PAVEMENT PATCHING HAS BEEN PROVIDED FOR USE IN THE PAVEMENT REHABILITATION AREAS. ACTUAL NEED FOR PAVEMENT PATCHING WILL BE DETERMINED IN THE FIELD AT THE TIME OF CONSTRUCTION BY THE ENGINEER. THE ACTUAL QUANTITY APPROVED BY THE ENGINEER WILL BE MEASURED AND PAID PER SQUARE YARD AT THE AWARDED UNIT PRICE AND NO EXTRA COMPENSATION TO THE CONTRACTOR WILL BE ALLOWED FOR ANY INCREASE OR DECREASE IN QUANTITY.



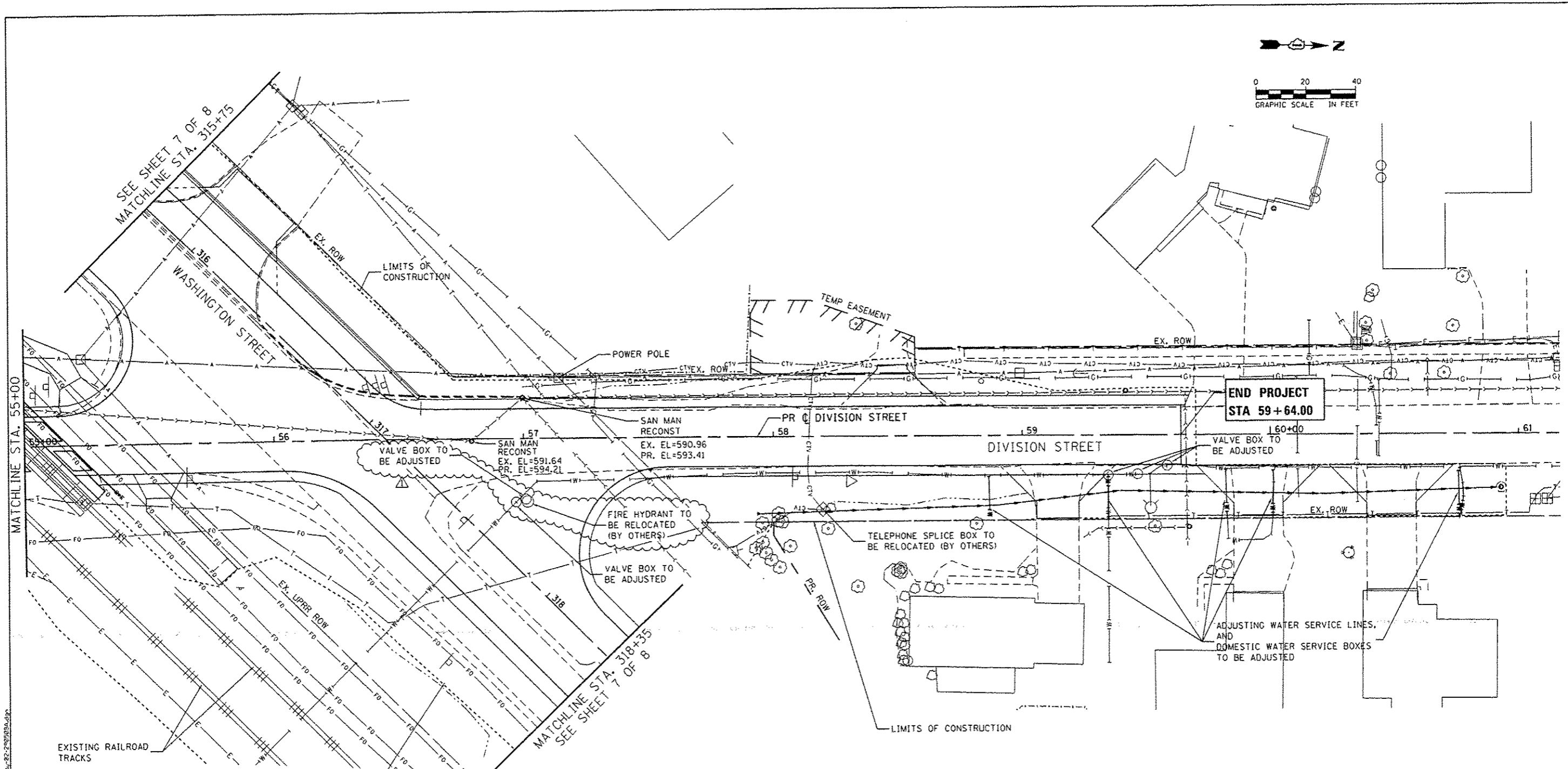
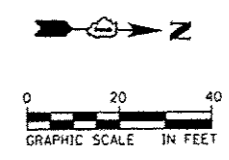
USER NAME: james.push	DESIGNED: CJC	REVISED: 05/05/2016
DRAWN: FJS	CHECKED: JRP	REVISED:
PLT SCALE: 48,0000 1/4" = 1'	DATE: 03/16/2016	REVISED:
PLT DATE: 5/3/2016		

STATE OF ILLINOIS  
DEPARTMENT OF TRANSPORTATION

SCHEDULES OF QUANTITIES

SCALE: NONE SHEET 2 OF 4 SHEETS STA. TO STA.

F.A.P. RTE. 846	SECTION D1HSRR2016-05&06	COUNTY WILL	TOTAL SHEETS 292	SHEET NO. 151
CONTRACT NO. 62B36			ILLINOIS FED. AID PROJECT	



FILE NAME: c:\pawson\james\_pugh\transport\as\lump\lump11878\_D182835-sh1\util\p22\_2016.dwg



USER NAME: james_pugh	DESIGNED - CUG	REVISED - 05/05/2016
PLT SCALE: 48,0000 / in.	DRAWN - FJS	REVISED -
PLT DATE: 5/5/2016	CHECKED - JRP	REVISED -
	DATE - 03/16/2016	REVISED -

**STATE OF ILLINOIS  
DEPARTMENT OF TRANSPORTATION**

EXISTING UTILITY PLANS DIVISION STREET			
SCALE: 1"=20'	SHEET 2 OF 8 SHEETS	STA. 55+00.00 TO STA. 59+64.00	

F.A.P. RTE.	SECTION	COUNTY	TOTAL SHEETS	SHEET NO.
046	DIHSRR2016-05&06	WILL	292	199
CONTRACT NO. 62B36			ILLINOIS FED. AID PROJECT	