

STATE OF ILLINOIS
DEPARTMENT OF TRANSPORTATION

F.A.P. RTE.	SECTION	COUNTY	TOTAL SHEETS	SHEET NO.
348	2121-B-R-1	COOK	25	1
ILLINOIS			CONTRACT NO. 62B98	

FOR INDEX OF SHEETS, SEE SHEET NO. 2

THE IMPROVEMENT IS LOCATED IN THE VILLAGE OF BEDFORD PARK

TRAFFIC DATA

HARLEM RD.

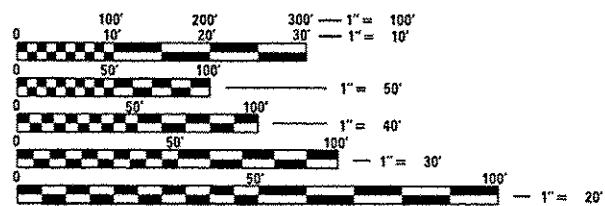
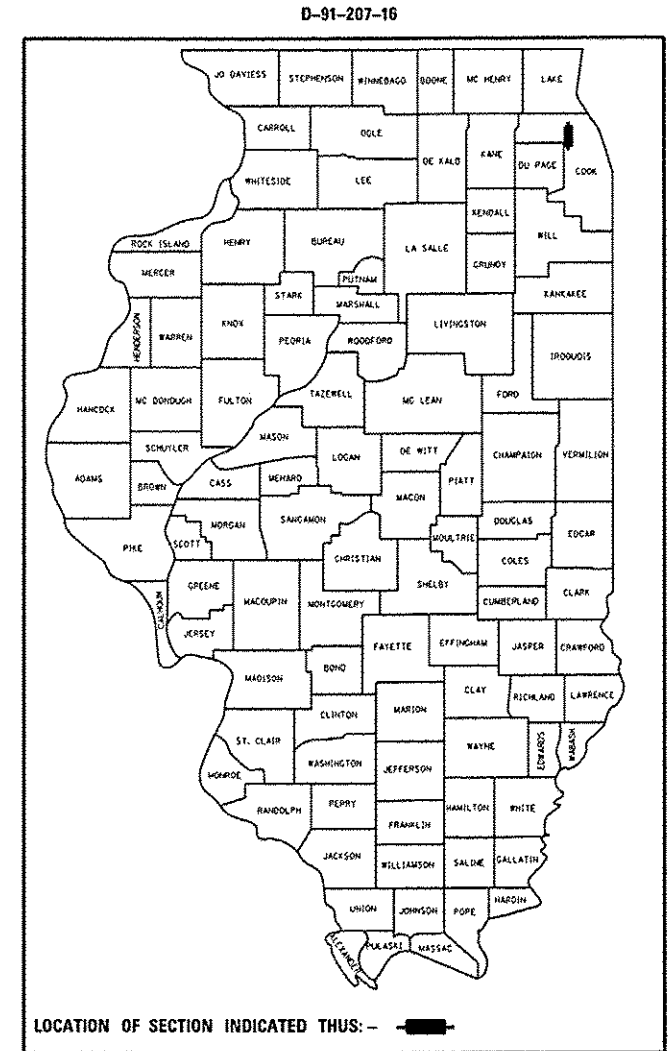
ADT (2015) = 40,000

POSTED SPEED LIMIT = 40 MPH

**PROPOSED
HIGHWAY PLANS**

F.A.P. ROUTE 348: IL 43 (HARLEM AVE.)
OVER BRC RAILROAD
SECTION: 2121-B-R-1
BRIDGE REHABILITATION
COOK COUNTY

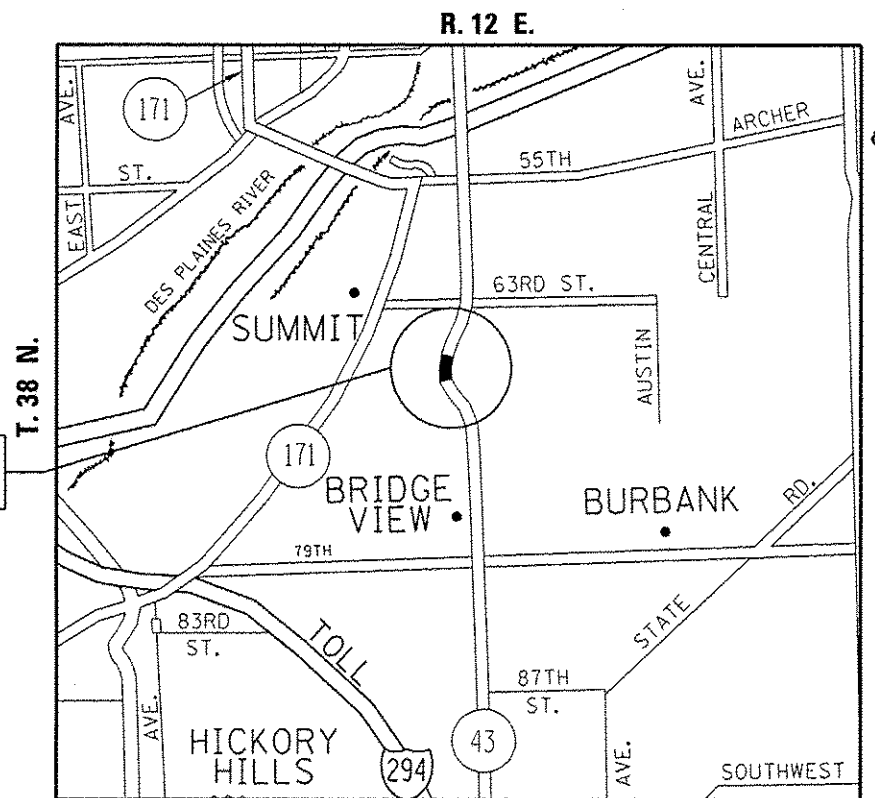
C-91-207-16



FULL SIZE PLANS HAVE BEEN PREPARED USING STANDARD ENGINEERING SCALES. REDUCED SIZED PLANS WILL NOT CONFORM TO STANDARD SCALES. IN MAKING MEASUREMENTS ON REDUCED PLANS, THE ABOVE SCALES MAY BE USED.

J.U.L.I.E.
JOINT UTILITY LOCATION INFORMATION FOR EXCAVATION
1-800-892-0123
OR 811

LOCATION OF IMPROVEMENT



LYONS TOWNSHIP

GROSS & NET LENGTH = 280.92 FT. = 0.053 MILE

PROJECT ENGINEER J. ALAIN MIDY (847) 221-3056
PROJECT MANAGER ISSAM RAYYAN (847) 705-4178

CONTRACT NO. 62B98

STATE OF ILLINOIS
DEPARTMENT OF TRANSPORTATION

SUBMITTED March 21 2016
John F. [Signature]
REGIONAL ENGINEER

May 6 2016
Margaret M. Addis [Signature]
ENGINEER OF DESIGN AND ENVIRONMENT

May 6 2016
[Signature]
DIRECTOR OF PROGRAM DEVELOPMENT

PRINTED BY THE AUTHORITY
OF THE STATE OF ILLINOIS

INDEX OF SHEETS

- 1. TITLE SHEET
- 2. INDEX OF SHEETS, STATE STANDARDS, AND GENERAL NOTES
- 3. SUMMARY OF QUANTITIES
- 4-13. BRIDGE REHABILITATION PLANS (SN 016-2526)
- 14-20. TRAFFIC CONTROL STAGING PLANS
- 21-22. PAVEMENT MARKING PLAN
- 23. TRAFFIC CONTROL AND PROTECTION FOR SIDE ROADS, INTERSECTIONS AND DRIVEWAYS (TC-10)
- 24. DISTRICT ONE TYPICAL PAVEMENT MARKINGS (TC-13)
- 25. ARTERIAL ROAD INFORMATION SIGN (TC-22)

STATE STANDARDS

STANDARD NO.	DESCRIPTION
643001-02	SAND MODULE IMPACT ATTENUATORS
701423-09	LANE CLOSURE, MULTILANE, WITH BARRIER FOR SPEEDS 45 MPH TO 55 MPH
701427-04	LANE CLOSURE, MULTILANE, INTERMITTENT OR MOVING OPERATIONS, FOR SPEEDS ≤ 40 MPH
701601-09	URBAN LANE CLOSURE, MULTILANE, 1W OR 2W WITH NONTRAVERSABLE MEDIAN
701801-06	SIDEWALK, CORNER OR CROSSWALK CLOSURE
701901-05	TRAFFIC CONTROL DEVICES
704001-08	TEMPORARY CONCRETE BARRIER
782006	GUARDRAIL AND BARRIER WALL REFLECTOR DETAILS

GENERAL NOTES

BEFORE STARTING ANY EXCAVATION, THE CONTRACTOR SHALL CALL "J.U.L.I.E." AT (800) 892-0123 OR 811 FOR FIELD LOCATIONS OF BURIED ELECTRIC, TELEPHONE, AND GAS FACILITIES. (48 HOUR NOTIFICATION REQUIRED).

THE CONTRACTOR WILL NOT BE ALLOWED TO SET UP A YARD OR FIELD OFFICE ON STATE PROPERTY WITHOUT THE WRITTEN PERMISSION OF THE DEPARTMENT.

BEFORE BEGINNING ANY WORK, THE CONTRACTOR SHALL RETAIN AND RECORD FOR FUTURE REFERENCE, ALL EXISTING PAVEMENT MARKING LINES (AND RAISED REFLECTIVE PAVEMENT MARKERS) IN ORDER THAT THESE LOCATIONS CAN BE RE-ESTABLISHED FOR STRIPING. EXACT LOCATIONS OF ALL PAVEMENT MARKINGS SHALL BE AS DIRECTED BY THE ENGINEER.

IT SHALL BE THE CONTRACTOR'S RESPONSIBILITY TO VERIFY ALL DIMENSIONS AND CONDITIONS EXISTING IN THE FIELD PRIOR TO CONSTRUCTION AND ORDERING OF MATERIALS.

THE CONTRACTOR SHALL CONTACT THE DISTRICT ONE TRAFFIC CONTROL SUPERVISOR AT (847) 705-4470 FOR ARTERIALS A MINIMUM OF 72 HOURS IN ADVANCE OF BEGINNING WORK.

DO NOT SCALE PLANS FOR CONSTRUCTION DIMENSIONS.

THE CONTRACTOR SHALL COORDINATE CONSTRUCTION ACTIVITIES WITH UTILITY COMPANIES, AND THE VILLAGE OF BEDFORD PARK.

THESE PLANS HAVE BEEN PREPARED FROM NOTES RECEIVED FROM THE BUREAU OF MAINTENANCE BRIDGE INSPECTORS.

THE CONTRACTOR SHALL BE REQUIRED TO PROVIDE ACCESS TO ABUTTING PROPERTY AT ALL TIMES DURING THE CONSTRUCTION OF THIS PROJECT.

FILE NAME =	USER NAME = pyrsanowakrb	DESIGNED -	REVISED -	STATE OF ILLINOIS DEPARTMENT OF TRANSPORTATION	INDEX OF SHEETS, STATE STANDARDS AND GENERAL NOTES	F.A.P. RTE.	SECTION	COUNTY	TOTAL SHEETS	SHEET NO.
p:\1\IL84EB\INTEG\Illinois.gov\FIDOT\Documents\DOT Offices\District 1\Projects\0120716\BMD\Design\0120716-sh1-plan.dgn		CHECKED -	REVISED -			348	2121-B-R-1	COOK	25	2
PLOT SCALE = 100.0000' / in.						CONTRACT NO. 62898				
PLOT DATE = 4/1/2016		DATE -	REVISED -			SCALE:	SHEET	OF	SHEETS	STA.

SUMMARY OF QUANTITIES			CONSTRUCTION TYPE CODE 0014					
CODE NO	ITEM	UNIT	100% STATE TOTAL QUANTITIES	0014				
40603340	HOT-MIX ASPHALT SURFACE COURSE, MIX "D", N70	TON	0.5	0.5				
50102400	CONCRETE REMOVAL	CU YD	39.1	39.1				
50157300	PROTECTIVE SHIELD	SQ YD	2284	2284				
50300255	CONCRETE SUPERSTRUCTURE	CU YD	39.1	39.1				
50800205	REINFORCEMENT BARS, EPOXY COATED	POUND	4630	4630				
50800515	BAR SPLICERS	EACH	48	48				
52000110	PREFORMED JOINT STRIP SEAL	FOOT	249	249				
58700300	CONCRETE SEALER	SQ FT	9135	9135				
67000400	ENGINEER'S FIELD OFFICE, TYPE A	CAL MO	3	3				
67100100	MOBILIZATION	LSUM	1	1				
70300150	SHORT TERM PAVEMENT MARKING REMOVAL	SQ FT	2709	2709				
70400100	TEMPORARY CONCRETE BARRIER	FOOT	800	800				
* 78000200	THERMOPLASTIC PAVEMENT MARKING - LINE 4"	FOOT	7535	7535				
70400200	RELOCATE TEMPORARY CONCRETE BARRIER	FOOT	800	800				
* 78008210	POLYUREA PAVEMENT MARKING TYPE I - LINE 4"	FOOT	558	558				
70600250	IMPACT ATTENUATORS, TEMPORARY (NON-REDIRECTIVE), TEST LEVEL 3	EACH	2	2				
78300100	PAVEMENT MARKING REMOVAL	SQ FT	2698	2698				
70600350	IMPACT ATTENUATORS, RELOCATE (NON-REDIRECTIVE), TEST LEVEL 3	EACH	2	2				
X7010216	TRAFFIC CONTROL AND PROTECTION, (SPECIAL)	LSUM	1	1				
* 78200530	BARRIER WALL MARKERS, TYPE C	EACH	88	88				
X7030030	WET REFLECTIVE TEMPORARY TAPE TYPE III, 4 INCH	FOOT	8126	8126				

SUMMARY OF QUANTITIES			CONSTRUCTION TYPE CODE 0014					
CODE NO	ITEM	UNIT	100% STATE TOTAL QUANTITIES	0014				
Z0001800	APPROACH SLAB REPAIR (PARTIAL DEPTH)	SQ YD	2	2				
Z0004556	HOT-MIX ASPHALT SURFACE REMOVAL (DECK)	SQ YD	2	2				
Z0012102	CONCRETE BRIDGE DECK SCARIFICATION 3/8"	SQ YD	1628	1628				
Z0012193	BRIDGE DECK THIN POLYMER OVERLAY 3/8"	SQ YD	1628	1628				
Z0012754	STRUCTURAL REPAIR OF CONCRETE (DEPTH EQUAL TO OR LESS THAN 5 INCHES)	SQ FT	12	12				
Z0016200	DECK SLAB REPAIR (PARTIAL)	SQ YD	8	8				
Z0021908	SILICONE JOINT SEALER, 2"	FOOT	284	284				
Z0030850	TEMPORARY INFORMATION SIGNING	SQ FT	51.4	51.4				
Z0048665	RAILROAD PROTECTIVE LIABILITY INSURANCE	LSUM	1	1				

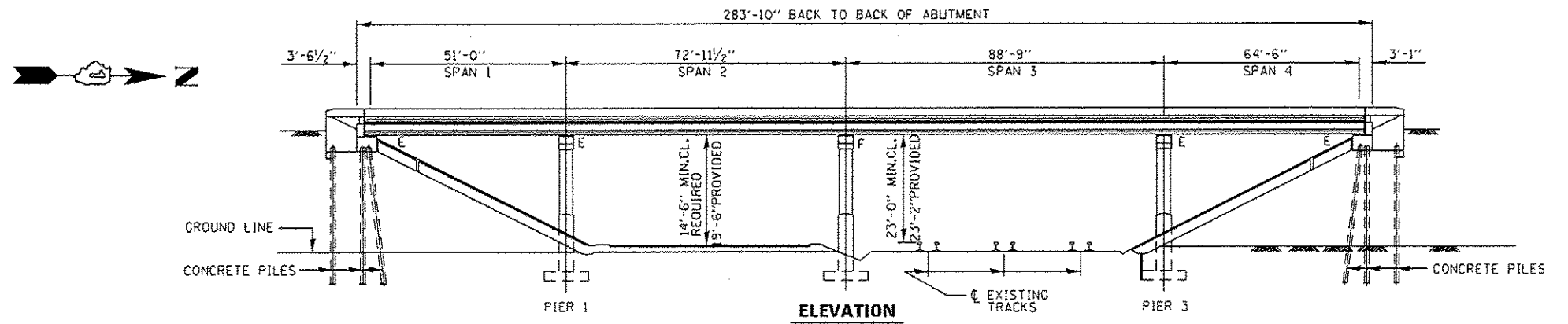
FILE NAME :	USER NAME :	DESIGNED :	REVISED :
PROJECT :	PROJECT :	CHECKED :	REVISED :
PLOT SCALE :	PLOT DATE :	DATE :	REVISED :

**STATE OF ILLINOIS
DEPARTMENT OF TRANSPORTATION**

SUMMARY OF QUANTITIES			
SCALE:	SHEET NO.	OF SHEETS	STA. TO STA.

F.A.P. RTE.	SECTION	COUNTY	TOTAL SHEETS	SHEET NO.
348	2121-B-R-1	COOK	25	3
CONTRACT NO. 62898				
FED. ROAD DIST. NO. 1 ILLINOIS FED. AID PROJECT				

* Specialty Items



GENERAL NOTES:
 PLAN DIMENSIONS AND DETAILS RELATIVE TO EXISTING PLANS ARE SUBJECT TO NOMINAL CONSTRUCTION VARIATIONS. THE CONTRACTOR SHALL FIELD VERIFY EXISTING DIMENSIONS AND DETAILS AFFECTING NEW CONSTRUCTION AND MAKE NECESSARY APPROVED ADJUSTMENT PRIOR TO CONSTRUCTION OR ORDERING OF MATERIALS. SUCH VARIATIONS SHALL NOT BE CAUSE FOR ADDITIONAL COMPENSATION FOR A CHANGE IN SCOPE OF THE WORK, HOWEVER, THE CONTRACTOR WILL BE PAID FOR THE QUANTITY ACTUALLY FURNISHED BASED AT THE UNIT PRICE BID FOR THE WORK.

EXISTING REINFORCEMENT BARS EXTENDING INTO THE REMOVAL AREA SHALL BE CLEANED, STRAIGHTENED AND INCORPORATED INTO THE NEW CONSTRUCTION. ANY REINFORCEMENT BARS THAT ARE DAMAGED DURING CONCRETE REMOVAL SHALL BE REPLACED WITH AN APPROVED BAR SPLICER OR ANCHORAGE SYSTEM. COST INCLUDED WITH CONCRETE REMOVAL.

AREAS OF DECK REPAIRS SHOWN ARE ESTIMATED. THE ENGINEER SHALL SHOW ACTUAL LOCATIONS OF DECK REPAIRS ON AS-BUILT PLANS.

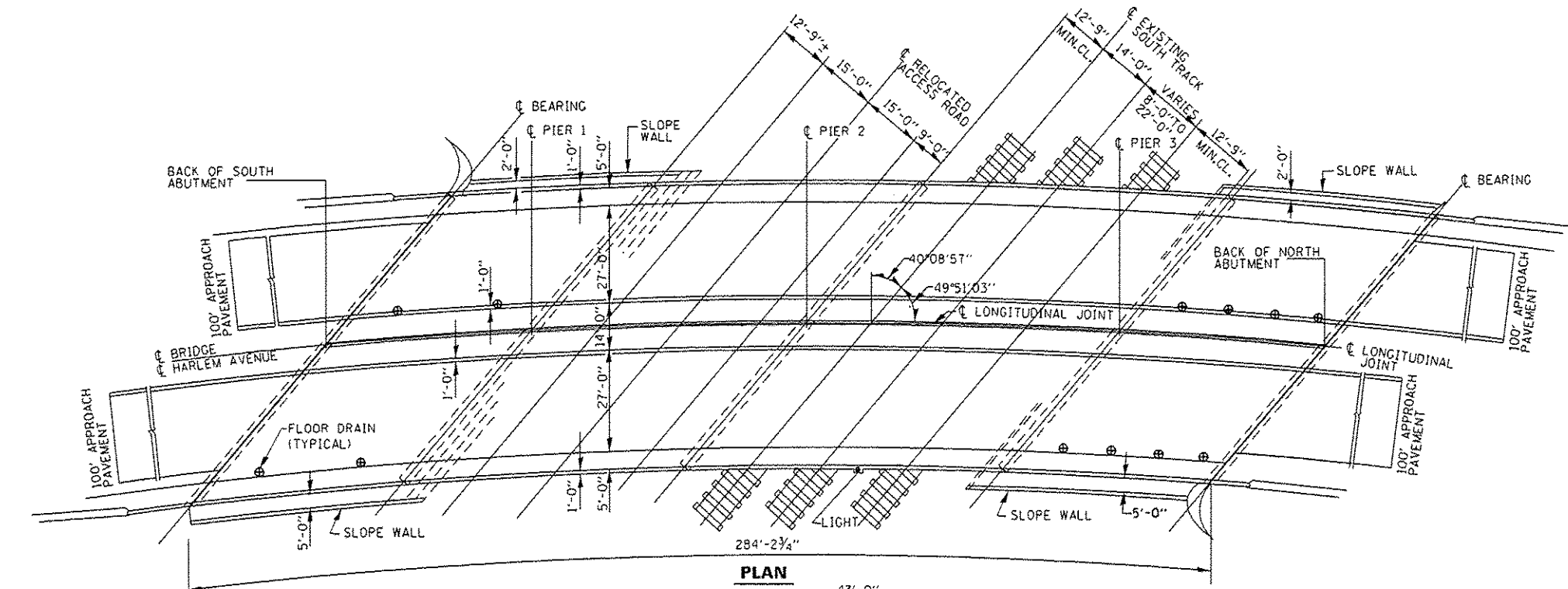
JOINT OPENINGS SHALL BE ADJUSTED ACCORDING TO ARTICLE 520.04 OF THE STANDARD SPECIFICATIONS. WHEN THE DECK IS POURED AT AN AMBIENT TEMPERATURE OTHER THAN 50° F.

PRIOR TO POURING THE NEW CONCRETE DECK, ALL HEAVY OR LOOSE RUST, LOOSE MILL SCALE, AND OTHER LOOSE OR POTENTIALLY DETRIMENTAL FOREIGN MATERIAL SHALL BE REMOVED FROM THE SURFACES IN CONTACT WITH CONCRETE. TIGHTLY ADHERED PAINT MAY REMAIN UNLESS OTHERWISE NOTED. REMOVAL SHALL BE ACCOMPLISHED BY METHODS THAT WILL NOT DAMAGE THE STEEL AND THE COST WILL BE INCLUDED IN THE PAY ITEM COVERING REMOVAL OF THE EXISTING CONCRETE.

REINFORCEMENT BARS DESIGNATED (E) SHALL BE EPOXY COATED.

THE DECK SURFACE SHALL HAVE ITS FINAL FINISH TINED ACCORDING TO ARTICLE 420.09(a)(1) OF THE STANDARD SPECIFICATIONS. COST INCLUDED WITH CONCRETE SUPERSTRUCTURES.

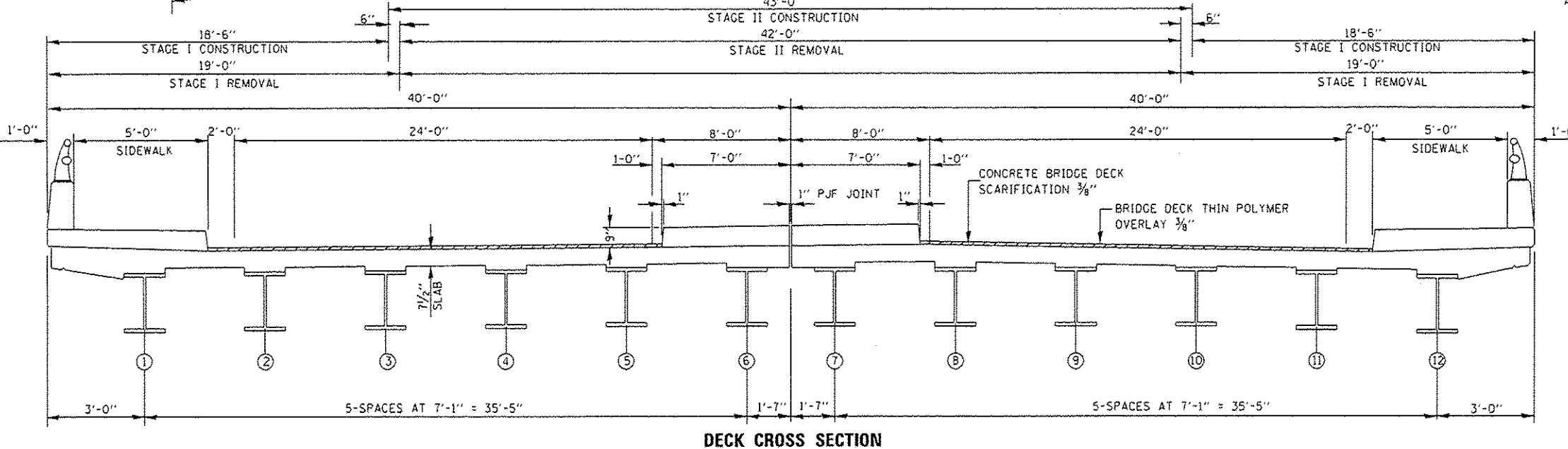
DO NOT SCALE DIMENSIONS.



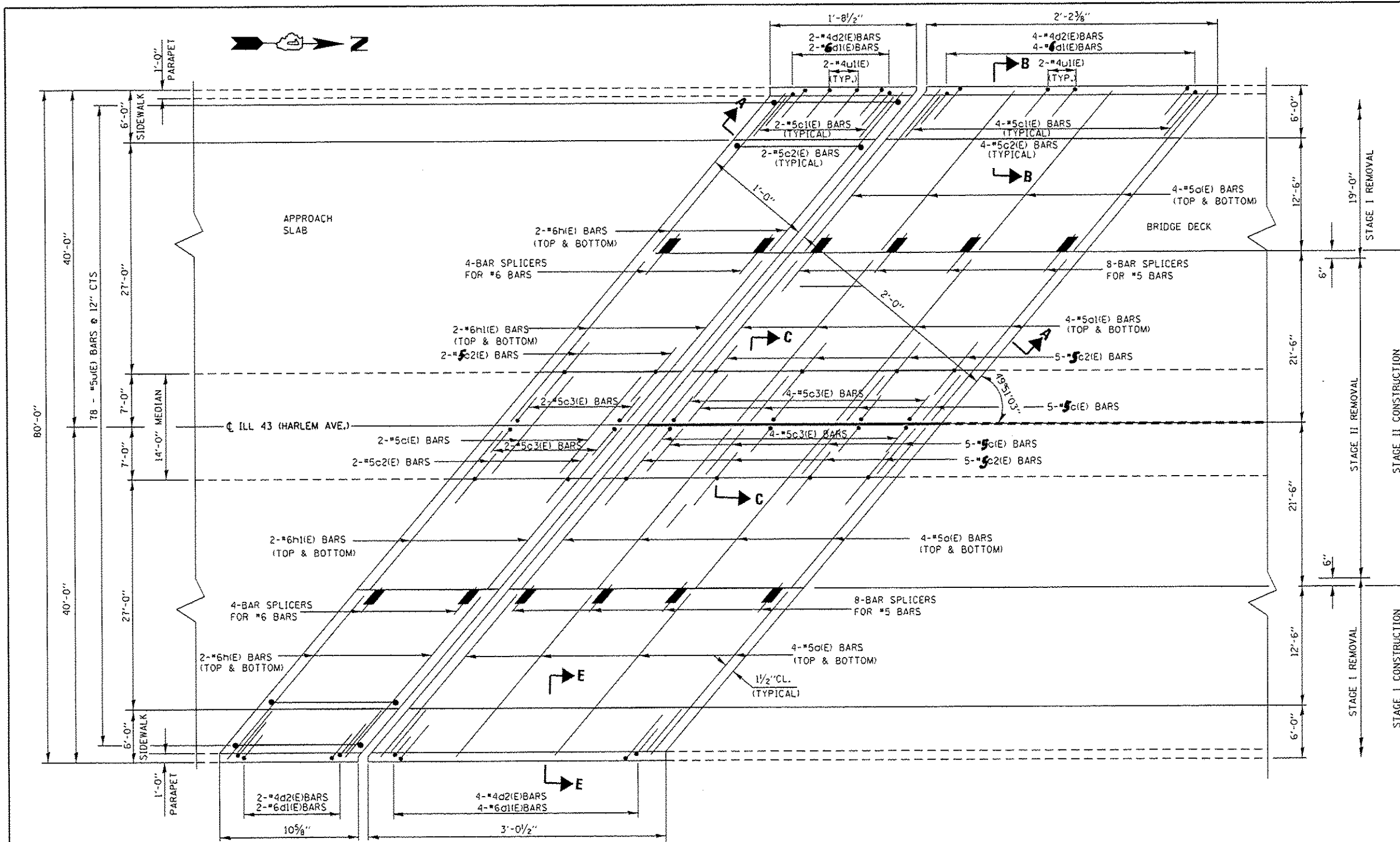
TOTAL BILL OF MATERIALS

ITEM	UNIT	QUANTITY
REINFORCEMENT BARS (EPOXY COATED)	POUND	4630
CONCRETE REMOVAL	CU. YD.	39.1
CONCRETE SUPERSTRUCTURE	CU. YD.	39.1
PREFORMED JOINT STRIP SEAL	FOOT	210
BAR SPLICERS	EACH	48
STRUCTURAL REPAIR OF CONCRETE ≤ 5"	SQ. FT.	12
BRIDGE DECK THIN POLYMER OVERLAY 3/8"	SQ. YD.	1628
APPROACH SLAB REPAIR (PARTIAL)	SQ. YD.	2
DECK SLAB REPAIR (PARTIAL)	SQ. YD.	8
SILICONE JOINT SEALER	FOOT	284
PROTECTIVE SHIELD	SQ. YD.	2284
CONCRETE BRIDGE DECK SCARIFICATION 3/8"	SQ. YD.	1628
CONCRETE SEALER (MEDIAN-SIDEWALK-PARAPET)	SQ. FT.	9135
HMA SURFACE COURSE, MIX "D", N70, 2"	TON	0.5
HMA SURFACE REMOVAL (DECK)	SQ. YD.	2

NOTE:
 CONCRETE SEALER TO BE APPLIED AT SIDEWALKS, MEDIAN AND PARAPETS, AND CONCRETE ADJACENT TO JOINTS.



David Carl Puzey 5/6/16
 Expires 11/30/16



PLAN
SOUTH ABUTMENT SHOWN
(NORTH ABUTMENT SIMILAR BY ROTATION 180°)
(Concrete Removal Limits Similar)

BILL OF MATERIALS

BAR	NO.	SIZE	LENGTH	SHAPE
d1(E)	32	#5	28'-0"	—
d1(E)	32	#5	33'-0"	—
d1(E)	24	#6	3'-9"	L
d2(E)	24	#4	5'-1"	L
c1(E)	24	#5	10'-5"	—
c1(E)	24	#5	8'-10"	—
c2(E)	48	#5	2'-5"	—
c3(E)	24	#5	2'-0 1/2"	—
h(E)	16	#6	28'-0"	—
h1(E)	16	#6	33'-0"	—
u1(E)	78	#5	2'-11"	□
u1(E)	16	#4	2'-0 1/2"	□
REINFORCEMENT BARS (EPOXY COATED)		POUND	4630	
CONCRETE REMOVAL		CU.YD.	22	
CONCRETE SUPERSTRUCTURE		CU.YD.	22	
BAR SPLICERS		EACH	48	
SILICONE JOINT SEALER		FOOT	284	

NOTES:

IF NEEDED, CUT THE BARS IN THE FIELD TO FIT.

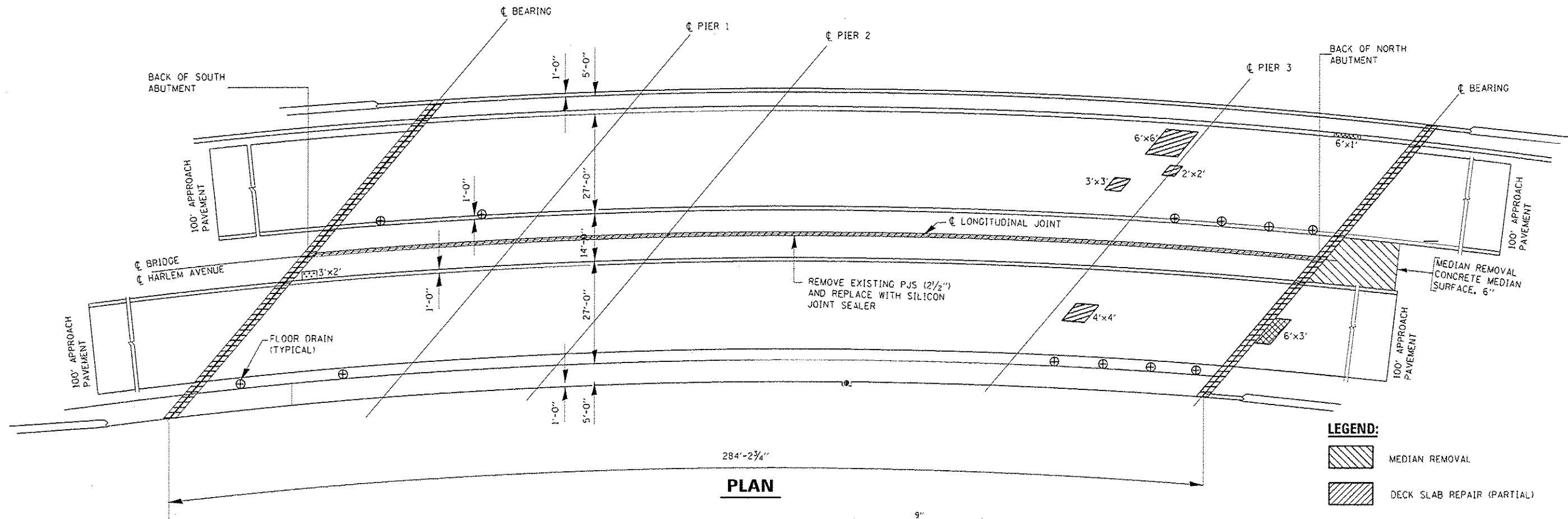
SEE SECTION A-A, C-C, ON SHEET 8 OF 25

SEE SECTION B-B, E-E, ON SHEET 8 OF 25

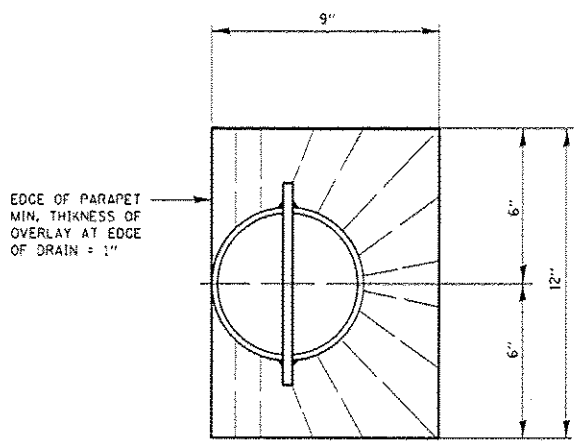
BSD-1

6-8-15

FILE NAME :	USER NAME :	DESIGNED :	REVISED :	STATE OF ILLINOIS DEPARTMENT OF TRANSPORTATION	ILL 43 (HARLEM AVENUE) OVER BRC RAILROAD EXPANSION JOINT SN. 016-2526	F.A.P. RTE.	SECTION	COUNTY	TOTAL SHEETS	SHEET NO.	
p:\11\LB4EBIDINTEG.illinois.gov\FVIDOT\O	Documents\DDT Offices\District 1\Projects\Str	DRW	REVISED :			348	2121-B-R-1	COOK	25	5	
PLOT SCALE :	CHECKED :	DATE :	REVISED :			CONTRACT NO. 62B98					
Default	PLOT DATE :					ILLINOIS FED. AID PROJECT					



PLAN



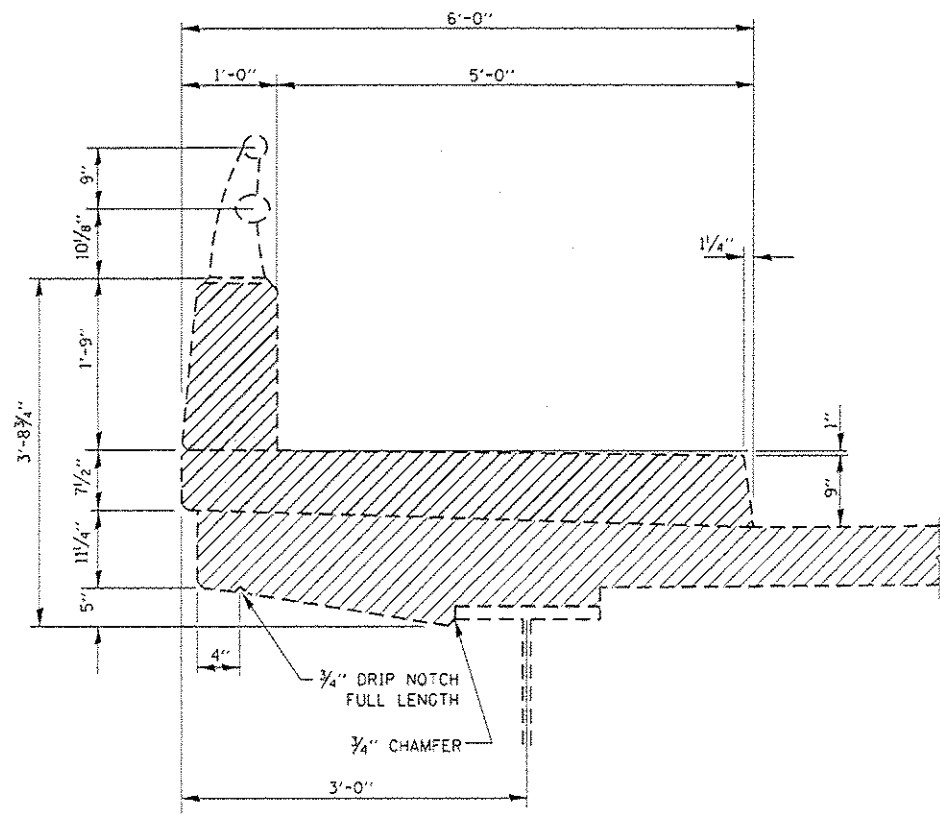
TOP PLAN OF DECK DRAIN

LEGEND:

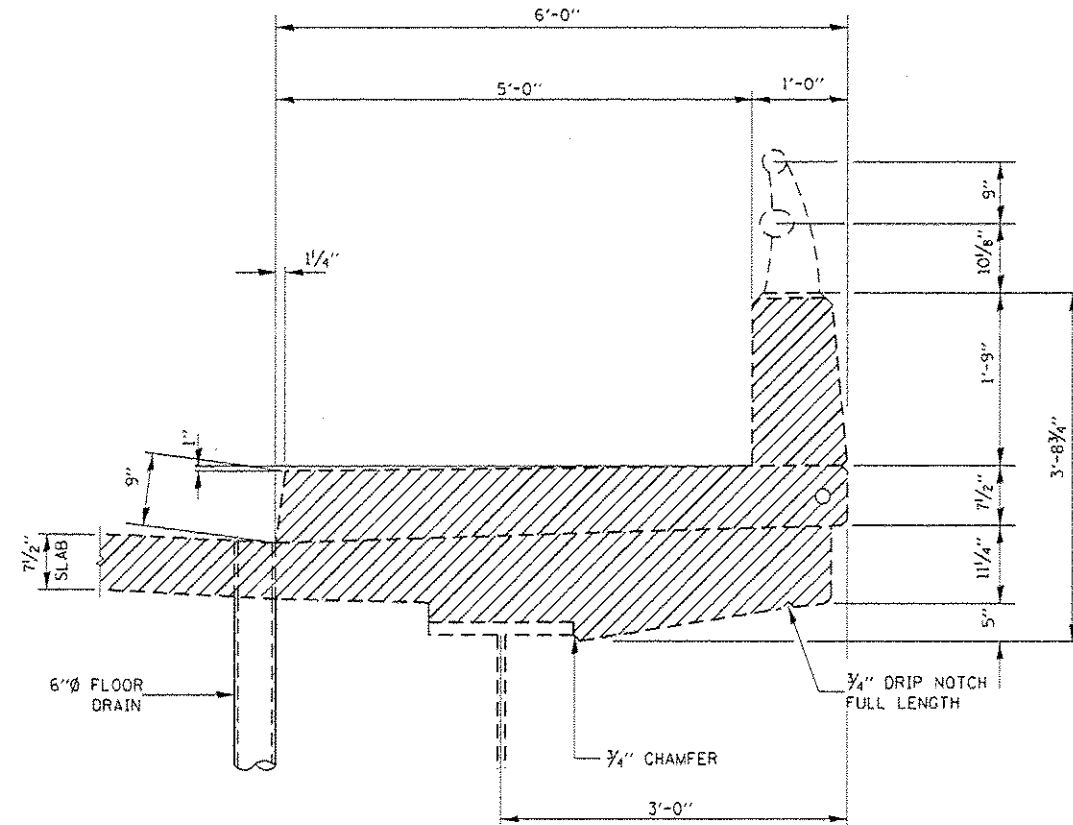
- MEDIAN REMOVAL
- DECK SLAB REPAIR (PARTIAL)
- APPROACH SLAB REPAIR (PARTIAL DEPTH)
-HMA SURFACE COURSE, MIX "D", N70
- CONCRETE REMOVAL AND
CONCRETE SUPERSTRUCTURE
- STRUCTURAL REPAIR CONCRETE ≤ 5"

BILL OF MATERIALS

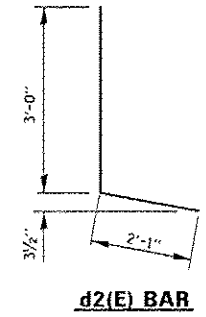
ITEM	UNIT	QUANTITY
DECK SLAB REPAIR (PARTIAL DEPTH)	SO.YD.	8
APPROACH SLAB (PARTIAL DEPTH)	SO.YD.	2
STRUCTURAL REPAIR OF CONCRETE ≤ 5"	SO.FT.	12
SILICONE JOINT SEALER	FOOT	284
CONCRETE MEDIAN 6"	CU.YD.	8
HMA SURF. CSE., MIX "D", N70, 2"	TON	0.5



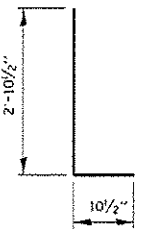
SECTION B-B
(EXISTING)



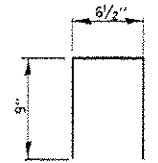
SECTION E-E
(EXISTING)



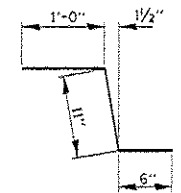
d2(E) BAR



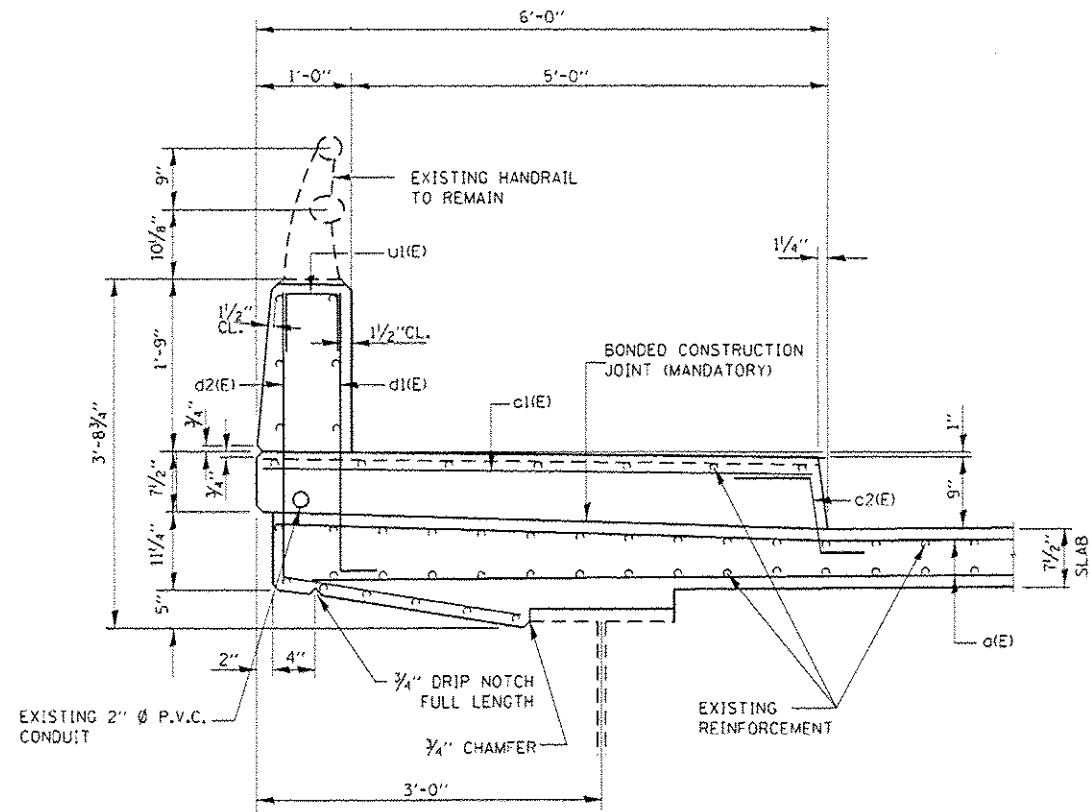
d1(E) BAR



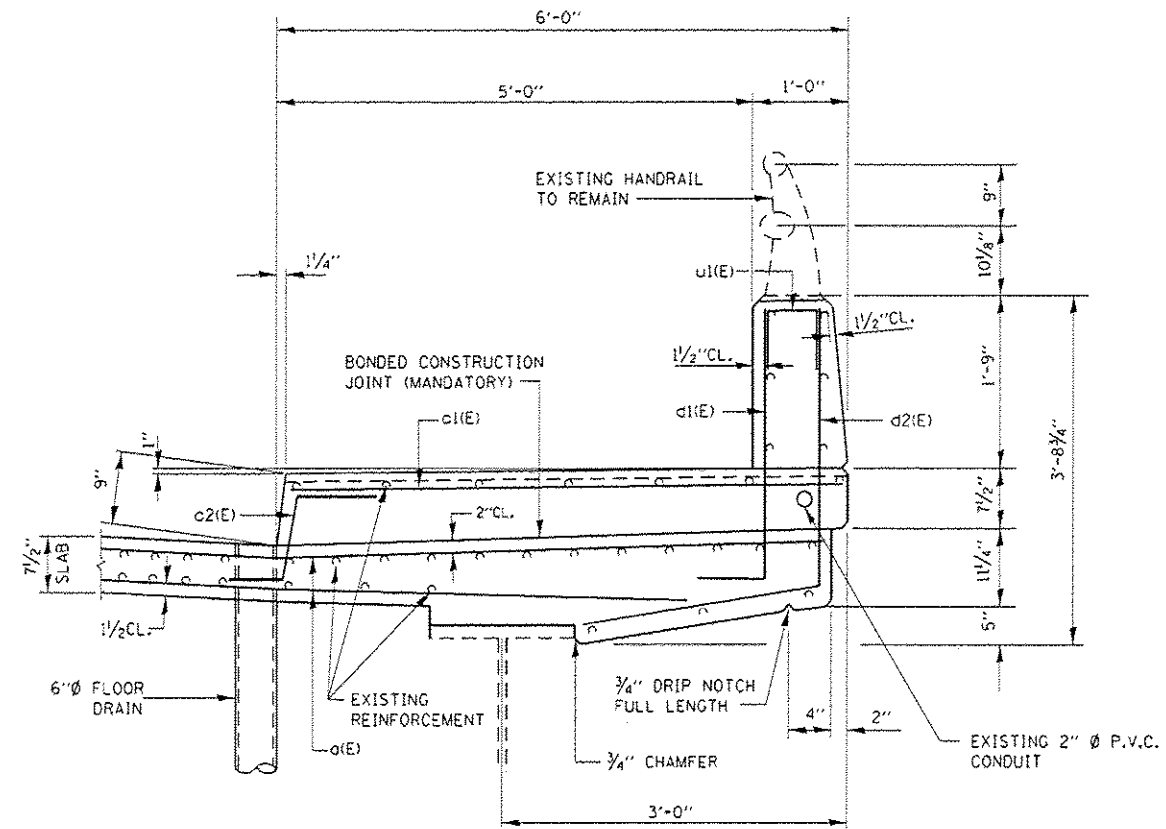
u1(E) BAR



c2(E) BAR

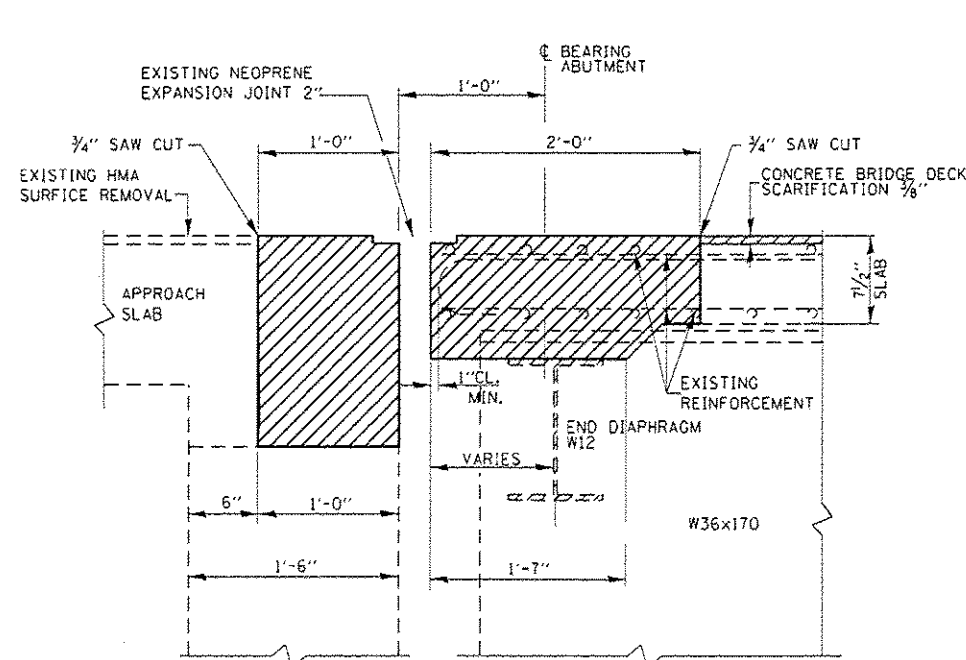


SECTION B-B
(PROPOSED)

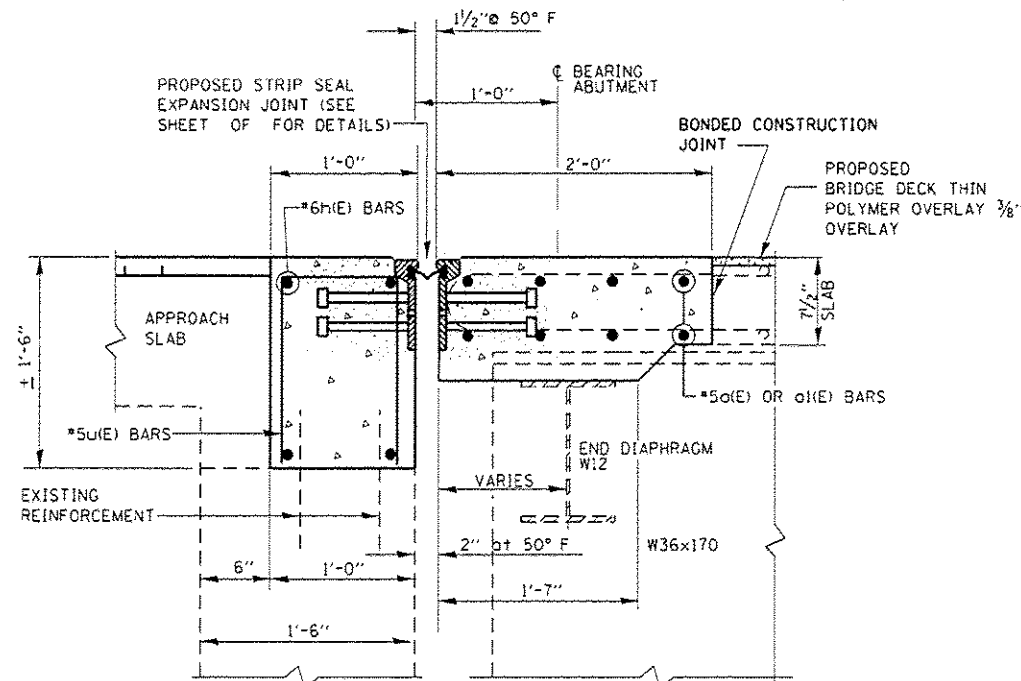


SECTION E-E
(PROPOSED)

FILE NAME	USER NAME	DESIGNED - MVT	REVISED -	STATE OF ILLINOIS DEPARTMENT OF TRANSPORTATION	ILL 43 (HARLEM AVENUE) OVER BRC RAILROAD SECTIONS AND DETAILS SN. 016-2526	F.A.P. RTE. 348	SECTION 2121-B-R-1	COUNTY COOK	TOTAL SHEETS 25	SHEET NO. 7	
PROJECT	DATE	CHECKED -	REVISED -			CONTRACT NO. 62B98					
DATE	DATE	DATE	DATE			ILLINOIS FED. AID PROJECT					
SCALE: SHEET OF SHEETS STA. TO STA.											



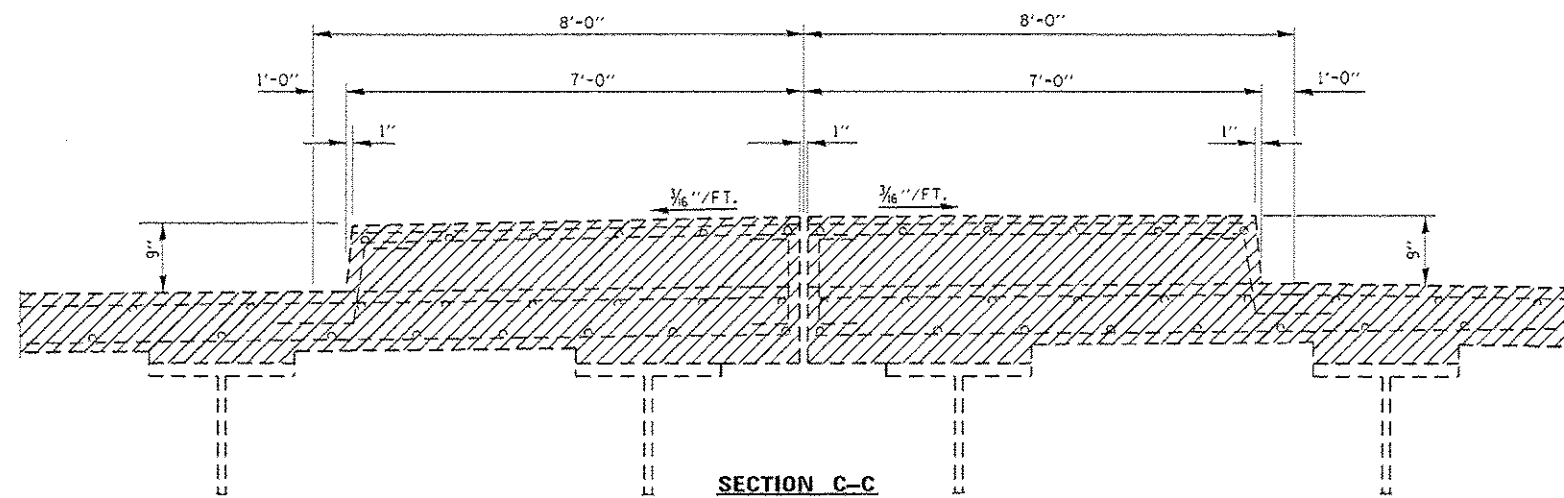
SECTION A-A
(EXISTING)



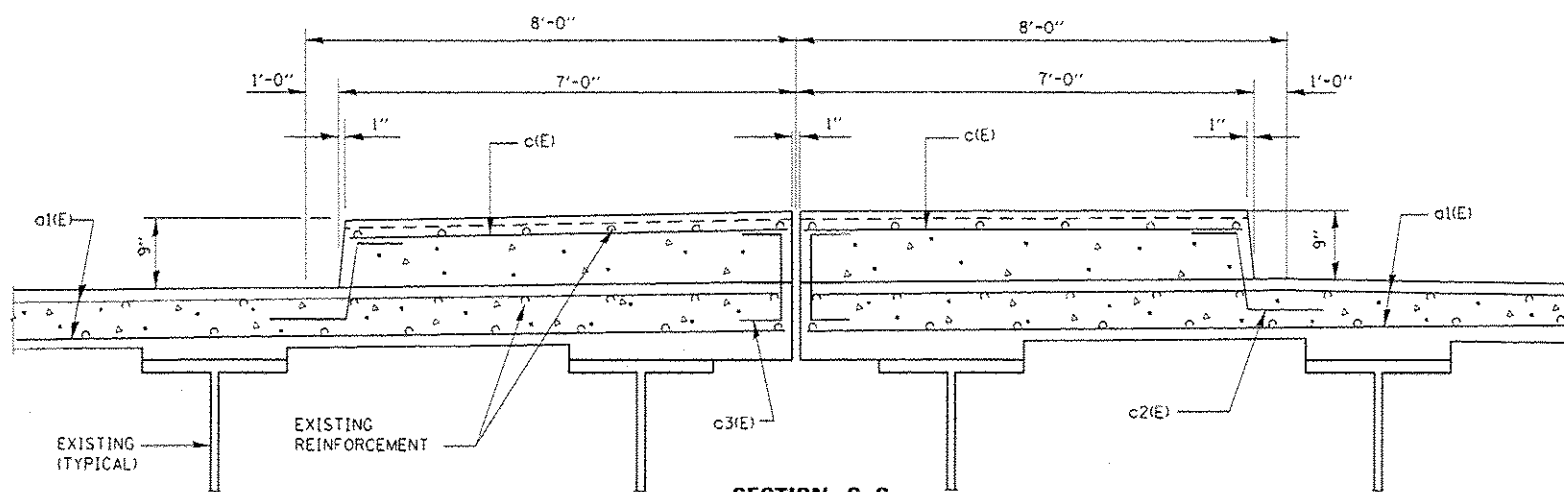
SECTION A-A
(PROPOSED)

LEGEND:

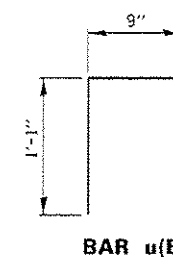
HATCHED AREA INDICATES CONCRETE REMOVAL



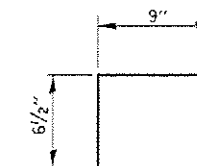
SECTION C-C
(EXISTING)



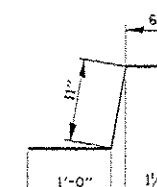
SECTION C-C
(PROPOSED MEDIAN)



BAR u(E)

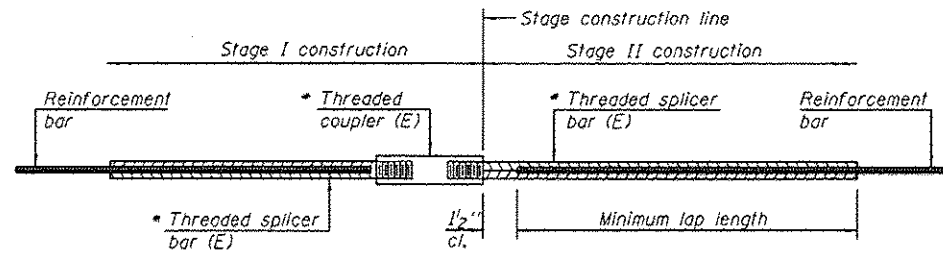


BAR c3(E)



c2(E) BAR

FILE NAME =	USER NAME = mdyja	DESIGNED - MVT	REVISED -	STATE OF ILLINOIS DEPARTMENT OF TRANSPORTATION	ILL 43 (HARLEM AVENUE) OVER BRC RAILROAD DECK REPAIR SN. 016-2526	F.A.P. RTE.	SECTION	COUNTY	TOTAL SHEETS	SHEET NO.	
g:\1\108468\INTEG\allinois.gov\PI\DOT1\0	ments\DOT Offices\District 1\Projects\Str	ORANGE\ata\Gwal\NY26-2526.dgn	REVISED -			348	2121-B-R-1	COOK	25	8	
Default	PLOT SCALE = 1/8" = 1'-0"	CHECKED -	REVISED -			CONTRACT NO. 62898					
	PLOT DATE = 5/5/2016	DATE -	REVISED -			ILLINOIS FED. AID PROJECT					

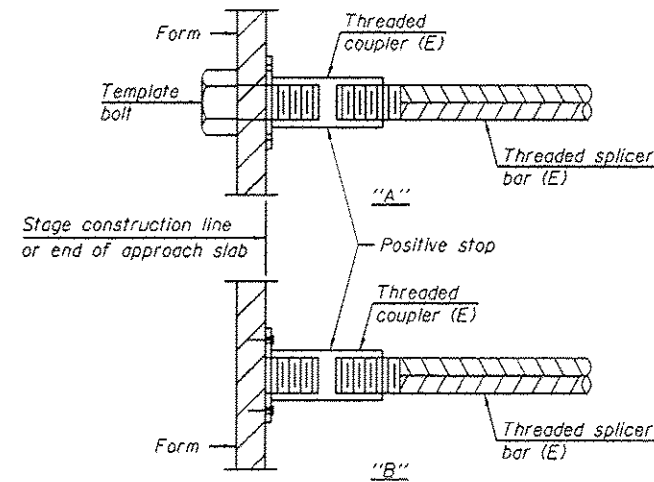


STANDARD BAR SPLICER ASSEMBLY

Threaded splicer bar length = min. lap length + 1/2" + thread length

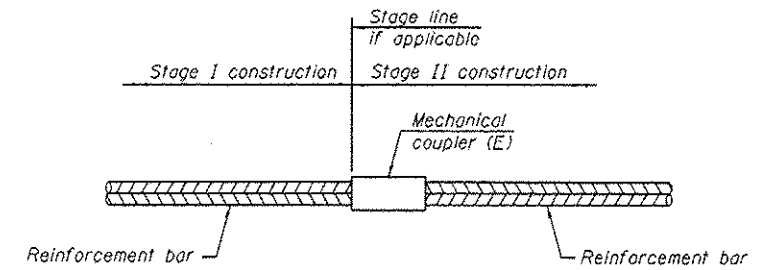
* Epoxy not required on Bar Splicer Assembly components used in conjunction with black bars.

Location	Bar size	No. assemblies required	Table for minimum lap length
Abutment	#6	16	4'-0"
Deck	#5	32	3'-6"



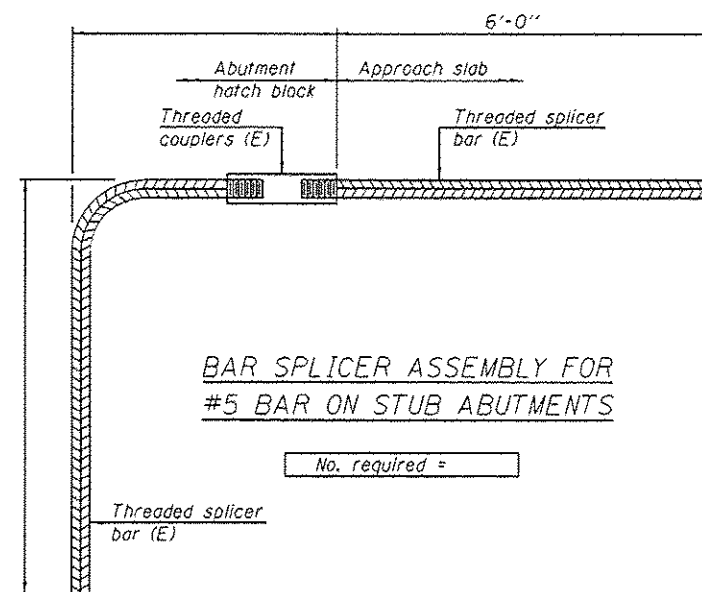
INSTALLATION AND SETTING METHODS

"A" : Set bar splicer assembly by means of a template bolt.
 "B" : Set bar splicer assembly by nailing to wood forms or cementing to steel forms.
 (E) : Indicates epoxy coating.



STANDARD MECHANICAL SPLICER

Location	Bar size	No. assemblies required



BAR SPLICER ASSEMBLY FOR #5 BAR ON STUB ABUTMENTS

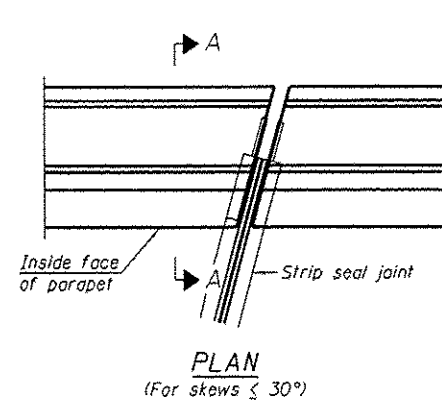
NOTES

Splicer bars shall be deformed with threaded ends and have a minimum 60 ksi yield strength.
 All reinforcement shall be lapped and tied to the splicer bars.
 Bar splicer assemblies shall be epoxy coated according to the requirements for reinforcement bars. See Section 508 of the Standard Specifications.
 See approved list of bar splicer assemblies and mechanical splicers for alternatives.

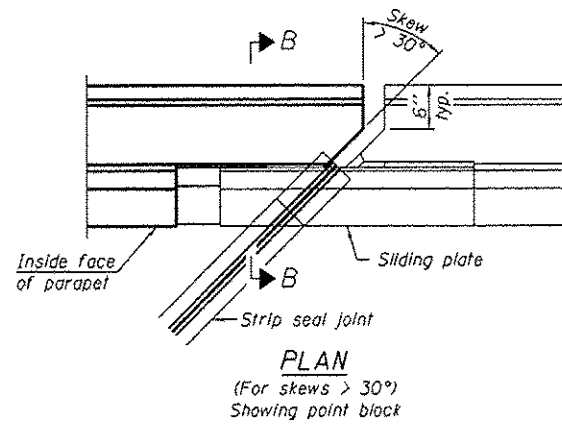
BSD-1

6-8-15

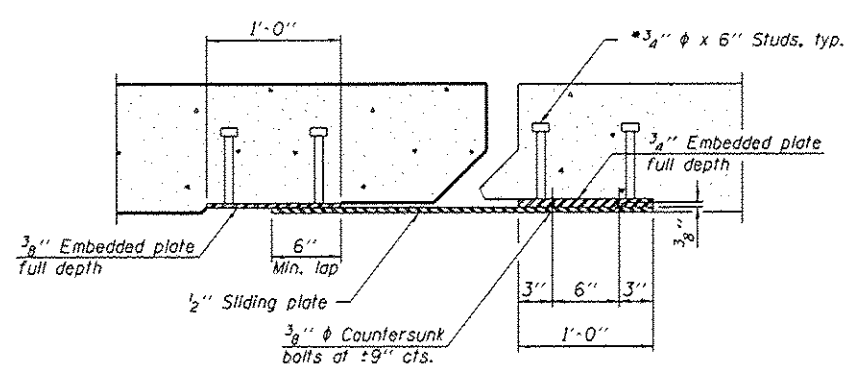
FILE NAME : p:\11\084EB\INTEG\Illinois.gov\1001\00	USER NAME : midyo	DESIGNED : MVT	REVISED : -	STATE OF ILLINOIS DEPARTMENT OF TRANSPORTATION	ILL 43 (HARLEM AVENUE) OVER BRC RAILROAD BAR SPLICER ASSEMBLY SN. 016-2526	F.A.P. RTE.	SECTION	COUNTY	TOTAL SHEETS	SHEET NO.	
		CHECKED	REVISED : -			348	2121-B-R-1	COOK	25	9	
PLOT SCALE : 100.0000 / in		DATE	REVISED : -			SCALE: SHEET NO. OF SHEETS STA. TO STA.		CONTRACT NO. 62B98			
PLOT DATE : 5/5/2016						ILLINOIS FED. AID PROJECT					



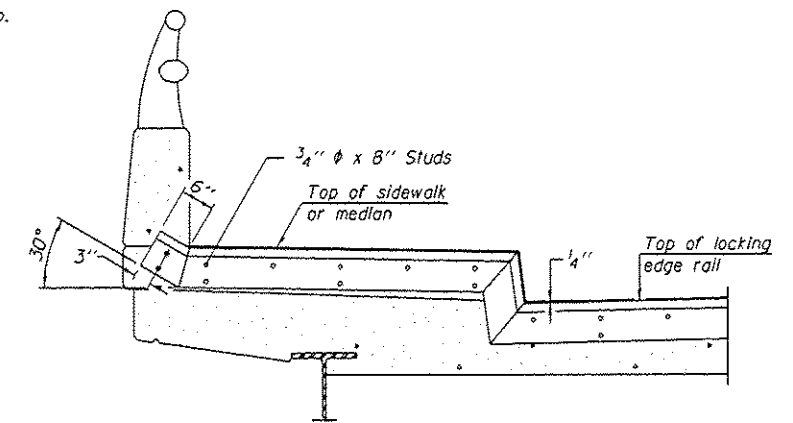
PLAN
(For skews $\le 30^\circ$)



PLAN
(For skews $> 30^\circ$)
Showing point block

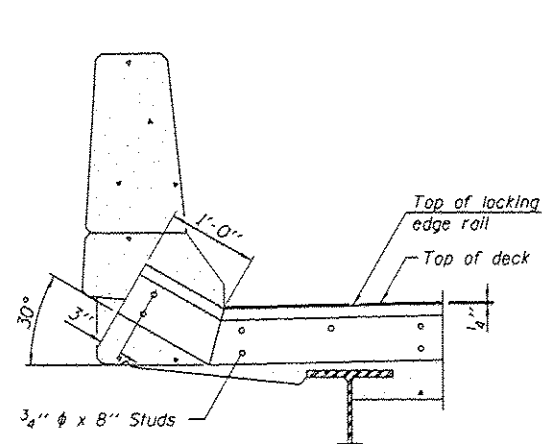


SECTION C-C

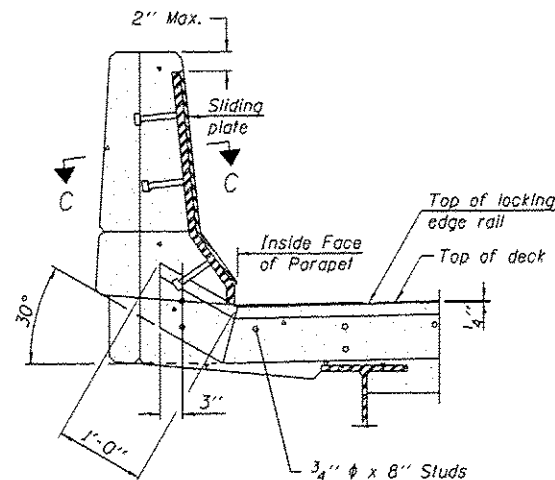


TYPICAL END TREATMENT
AT SIDEWALK OR MEDIAN

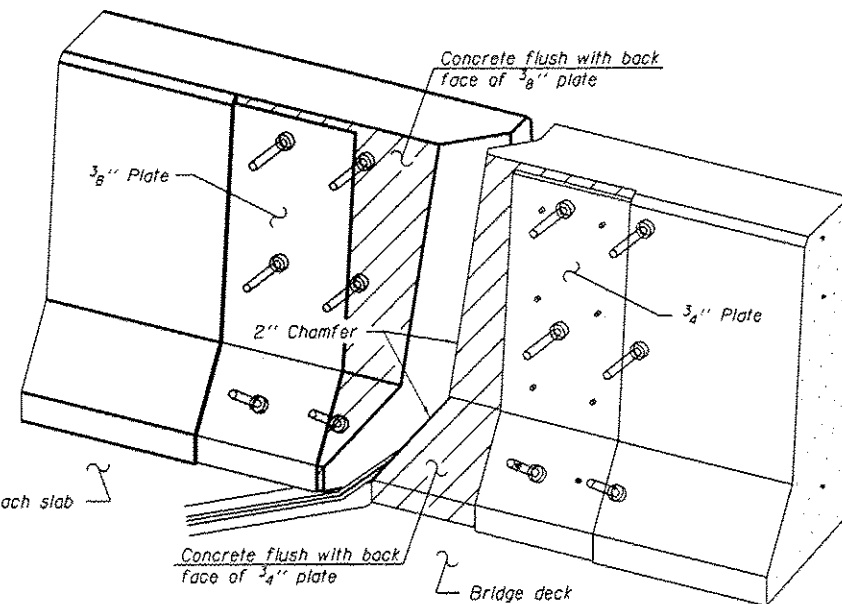
Shorter plates with a single row of studs at 12" cts. may be necessary on medians which are shallower than 9". See manufacturer's recommendation.



SECTION A-A



SECTION B-B



TRIMETRIC VIEW
(Showing back plates only)

Notes:
The strip seal shall be made continuous and shall have a minimum thickness of 1/4". The configuration of the strip seal shall match the configuration of the Locking Edge Rails. Open or "webbed" strip seal gland configurations are not permitted. The gland shall be sized for a maximum rated movement of 4 inches.

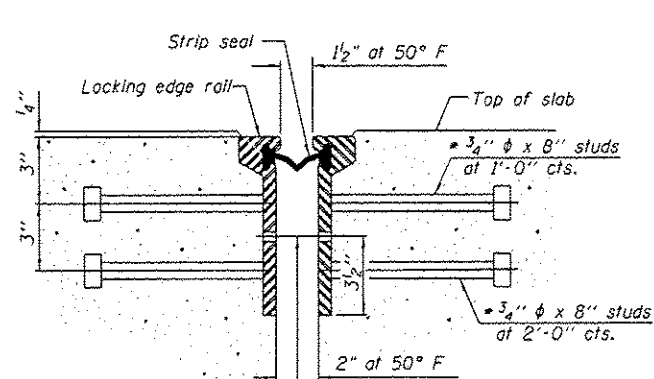
The Locking Edge Rails depicted are conceptual only, except for the minimum dimensions shown. The actual configuration of the Locking Edge Rails and matching strip seal may vary from manufacturer to manufacturer. Flanged edge rails will not be allowed. Locking Edge Rails may be spliced at slope discontinuities.

The manufacturer's recommended installation methods shall be followed.

The joint opening and deck dimensions detailed on the superstructure are based on a rolled rail expansion joint. If the Contractor elects to use the welded rail expansion joint, the opening and deck dimensions shall be modified according to the dimensions detailed on this sheet. Required modifications shall be made at no additional cost to the State.

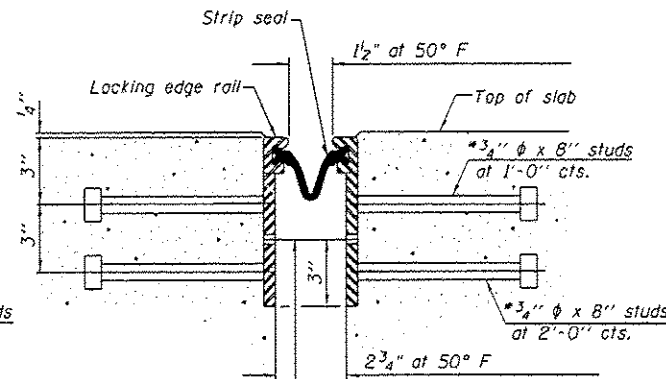
All steel components shall be galvanized after fabrication according to Article 520.03 of the Standard Specifications. Maximum space between rail segments shall be 3/16", sealed with a suitable sealant. Joints in rails within 10 ft. of curbs shall be welded.

Parapet plates and anchorage studs for skews $> 30^\circ$ included in the cost of Preformed Joint Strip Seal.



SECTION THRU
ROLLED RAIL JOINT

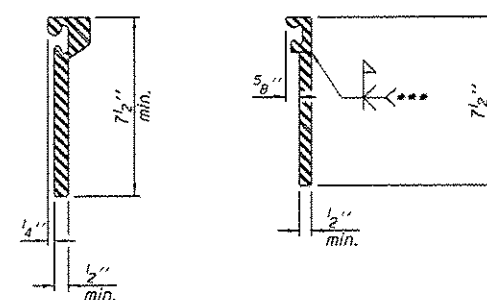
7/16" ϕ holes at 4'-0" cts. for 3/8" ϕ bolts. All bolts shall be burned, sawed, or chipped off flush with the plates after forms are removed, typ.



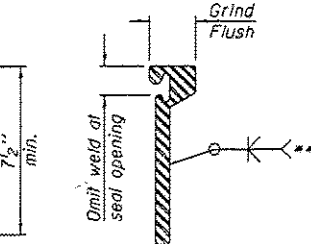
SECTION THRU
WELDED RAIL JOINT

7/16" ϕ holes at 4'-0" cts. for 3/8" ϕ bolts. All bolts shall be burned, sawed, or chipped off flush with the plates after forms are removed, typ.

* Granular or solid flux filled headed studs conforming to Article 1006.32 of the Std. Specs., automatically end welded.



ROULDED
EXTRUDED RAIL WELDED RAIL



LOCKING EDGE
RAIL SPLICE

The inside of the locking edge rail groove shall be free of weld residue.
Rolled rail shown, welded rail similar.

*** Back gouge not required if complete joint penetration is verified by mock-up.

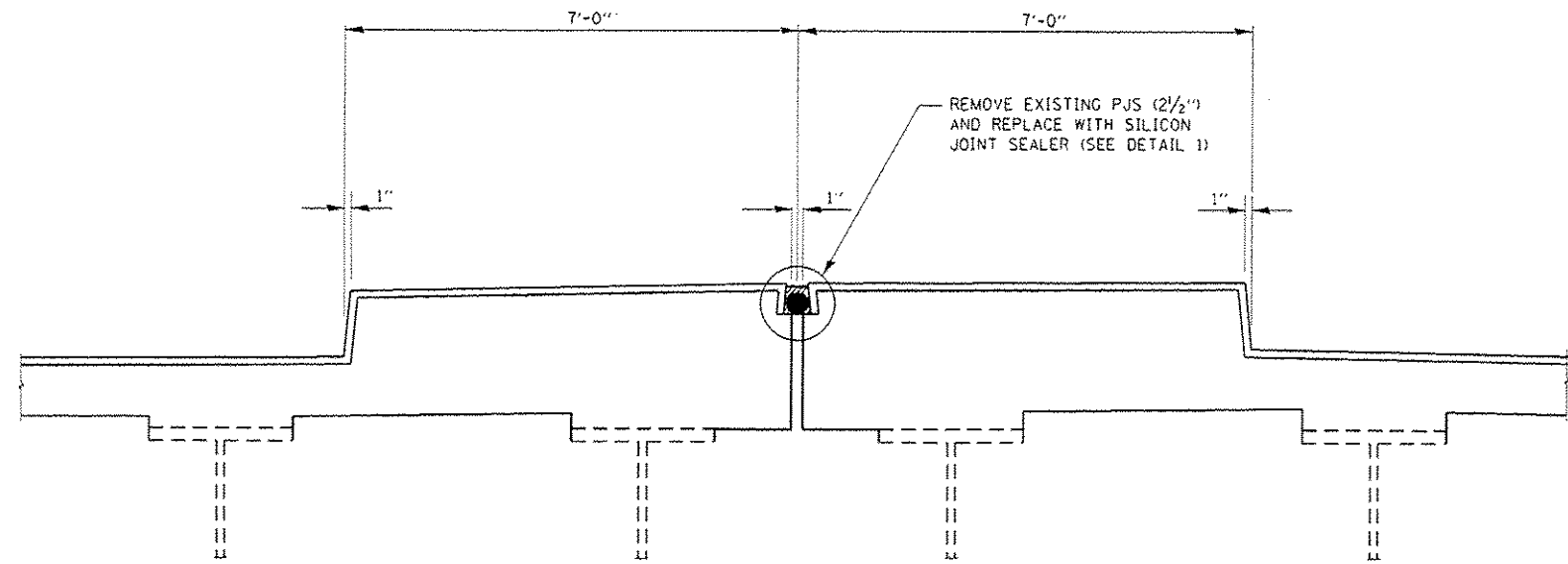
LOCKING EDGE RAILS

BILL OF MATERIAL

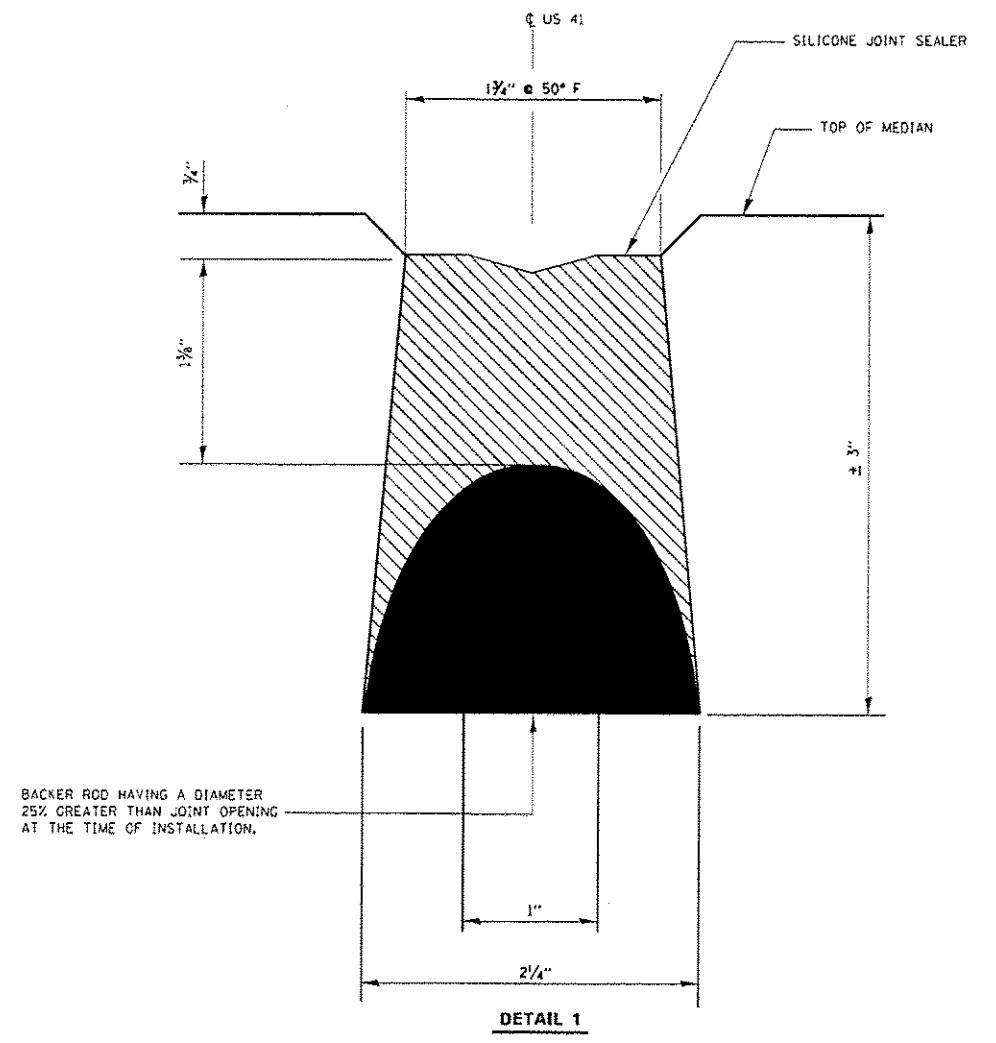
Item	Unit	Total
Preformed Joint Strip Seal	Foot	210

EJ-SSJ

1-27-12



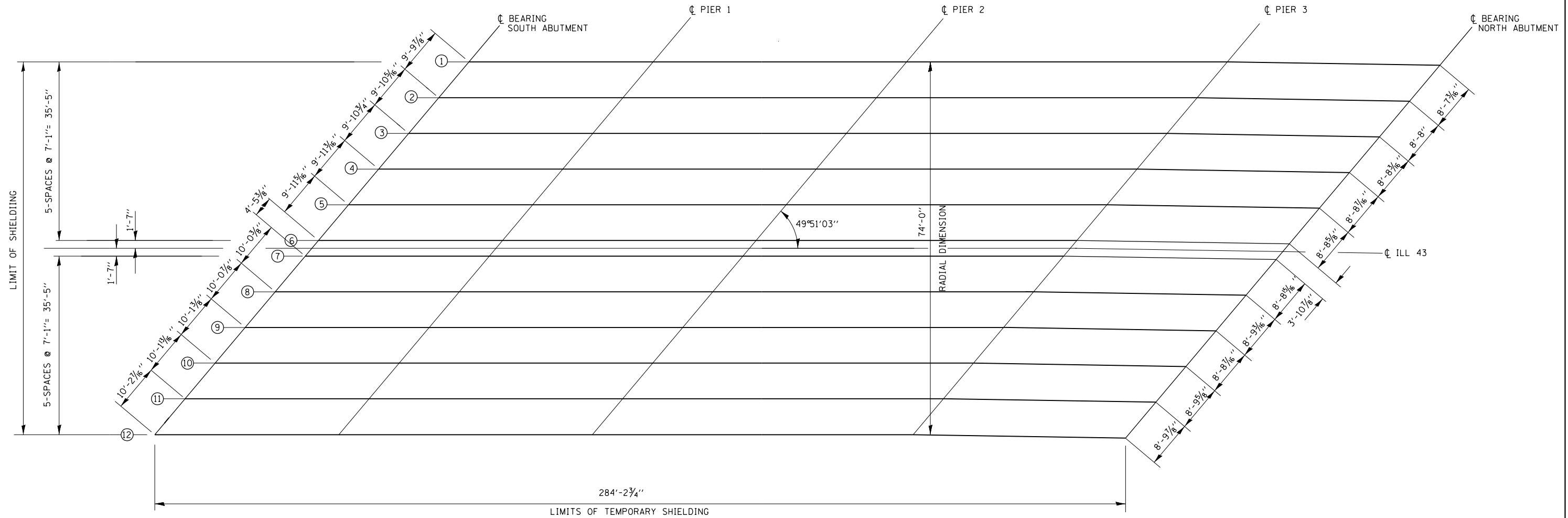
SECTION D-D
SEALER TREATMENT AT MEDIAN
(PROPOSED)



BACKER ROD HAVING A DIAMETER
 25% GREATER THAN JOINT OPENING
 AT THE TIME OF INSTALLATION.

DETAIL 1

FILE NAME :	USER NAME :	DESIGNED -	REVISED -	STATE OF ILLINOIS DEPARTMENT OF TRANSPORTATION	ILL 43 (HARLEM AVENUE) OVER BRC RAILROAD SILICON SEAL LONGITUDINAL JOINT AT MEDIAN SN. 016-2526	F.A.P.:	SECTION	COUNTY	TOTAL SHEETS	SHEET NO.	
pw\118484E0\INTEG\Illinois.gov\PW1007\De	umanta\1007 Offices\Divisions\N\Project\Str	ORANGE	REVISED -			348	2121-B-R-1	COOK	25	12	
PLT SCALE = 1/8" = 1'-0"	CHECKED -	REVISED -	DATE -			CONTRACT NO. 62B98					
PLT DATE = 5/5/2016	DATE -	REVISED -	SCALE:			SHEET	OF	SHEETS	STA.	TO STA.	ILLINOIS FED. AID PROJECT



FRAMING PLAN

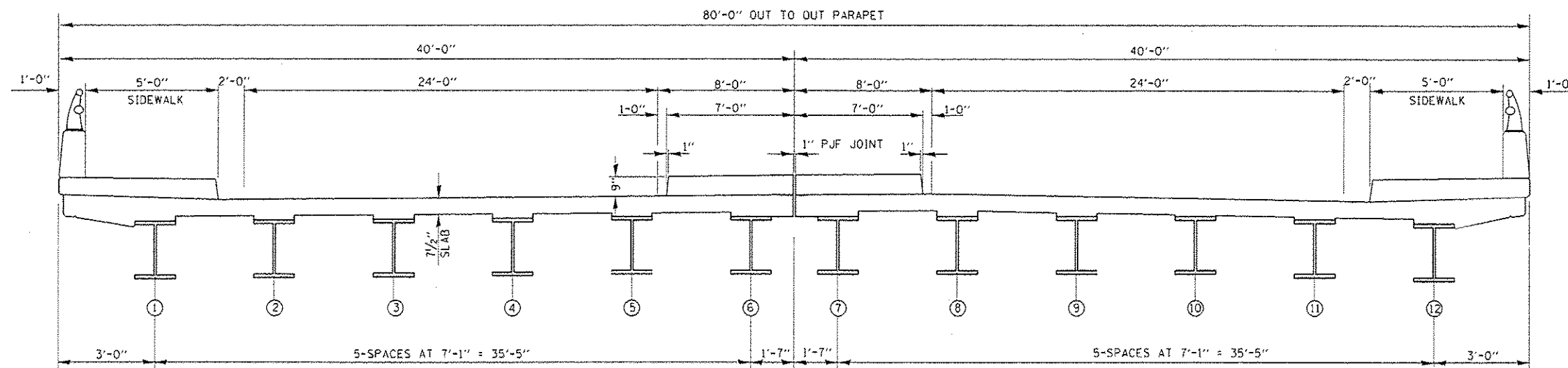
FILE NAME =	USER NAME = pyrzezowski	DESIGNED - MVT	REVISED -
pw:\IL\084EBID\INTEG\illinois.gov\PWIDOT\Documents\DOT Offices\District 1\Projects\DI207\Bridges\I11\0120716-shf-plan.dgn		CHECKED -	REVISED -
Default	PLOT SCALE = 100.0000' / in.	DATE -	REVISED -
	PLOT DATE = 3/30/2016		

**STATE OF ILLINOIS
DEPARTMENT OF TRANSPORTATION**

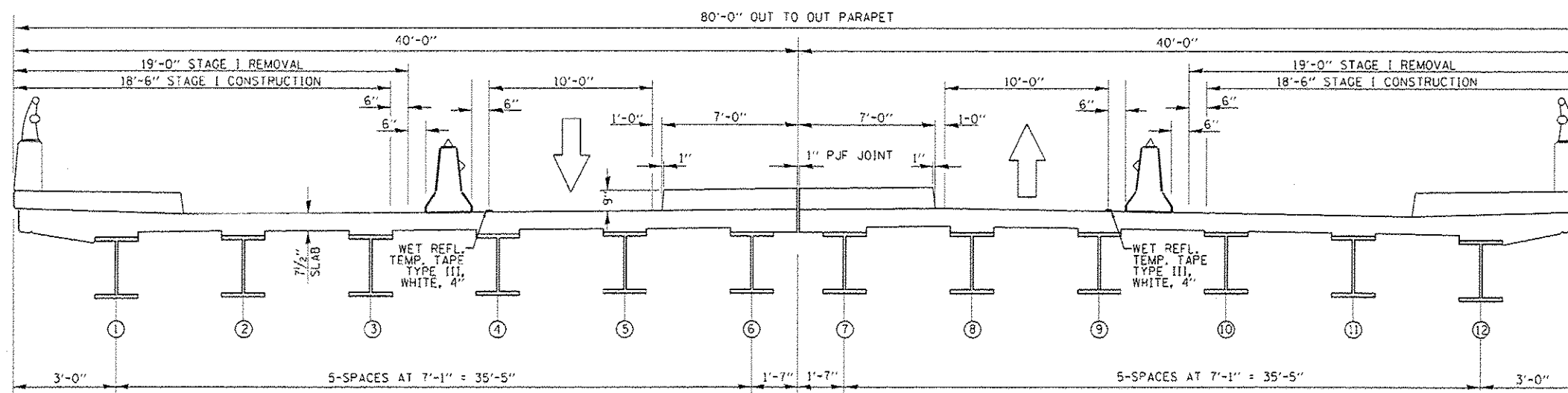
**ILL 43 (HARLEM AVENUE) OVER BRC RAILROAD
FRAMING PLAN
SN. 016-2526**

SCALE: SHEET OF SHEETS STA. TO STA.

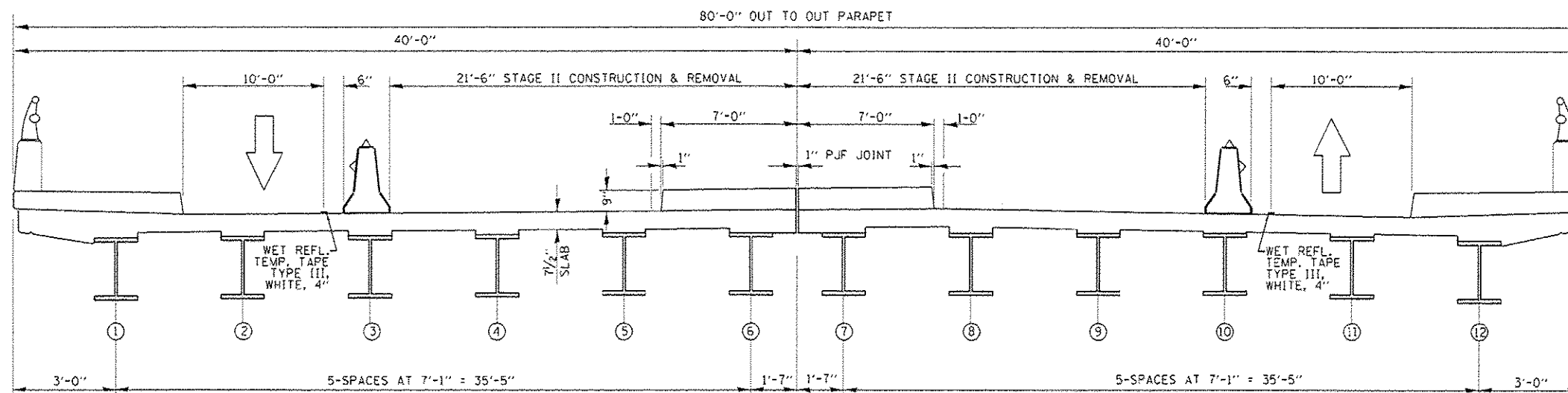
F.A.P. RTE.	SECTION	COUNTY	TOTAL SHEETS	SHEET NO.
348	2121-B-R-1	COOK	25	13
CONTRACT NO. 62B98				
ILLINOIS FED. AID PROJECT				



DECK CROSS SECTION





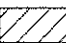

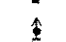
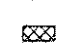
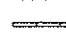
STAGE I CROSS SECTION

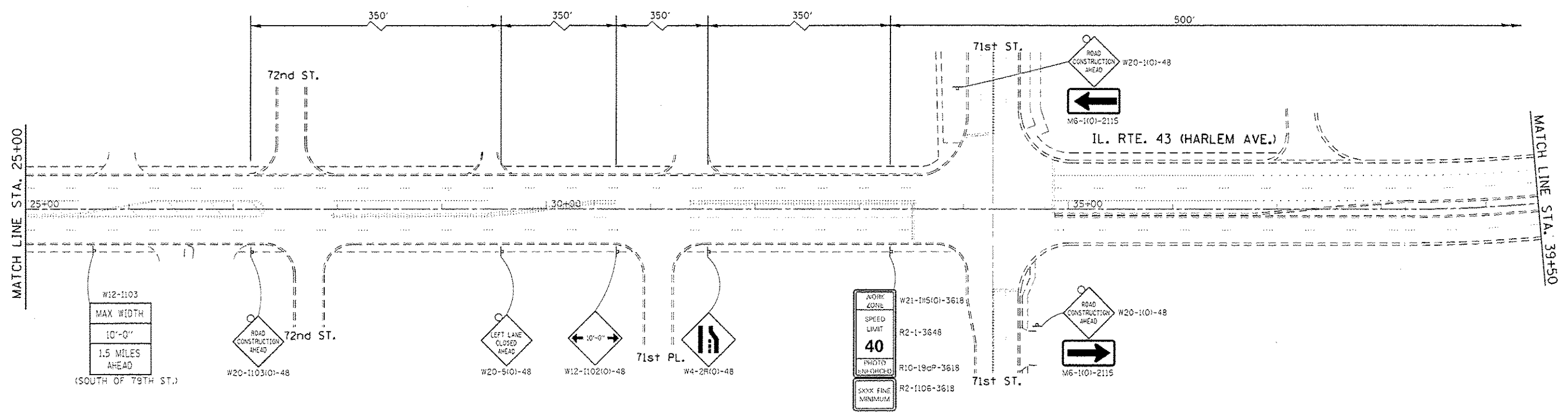
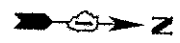
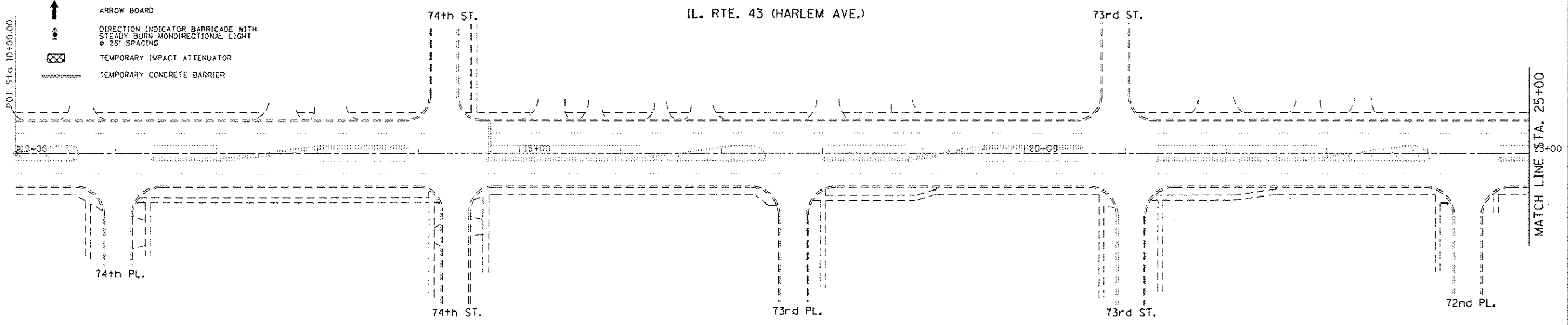


STAGE II CROSS SECTION

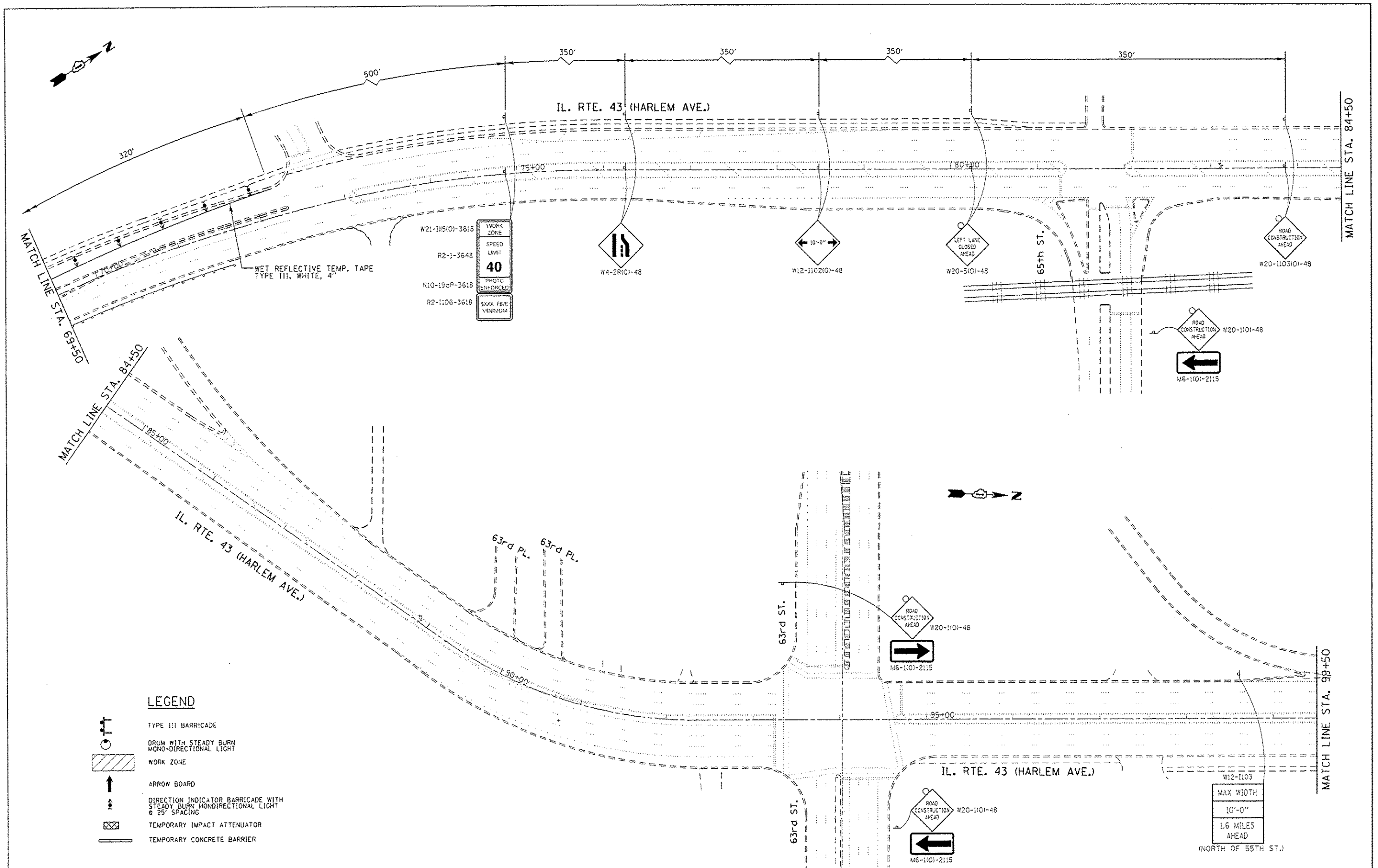
FILE NAME =	USER NAME = pyznowski	DESIGNED -	REVISED -	STATE OF ILLINOIS DEPARTMENT OF TRANSPORTATION	SCALE: [SHEET OF SHEETS] STA. TO STA.	F.A.P. RTE.	SECTION	COUNTY	TOTAL SHEETS	SHEET NO.	
\\L264E810\INTEG\Illinois.gov\PKIDOT\...	\\L264E810\INTEG\Illinois.gov\PKIDOT\...	DRAWN	REVISED			348	2121-B-R-1	COOK	25	14	
PLOT SCALE = 1/8" = 1'-0"	DATE = 4/7/2016	CHECKED -	REVISED -			CONTRACT NO. 62B98					
Defaults		DATE -	REVISED -			ILLINOIS FED. AID PROJECT					

LEGEND





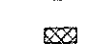
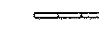
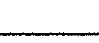
-  TYPE III BARRICADE
-  DRUM WITH STEADY BURN MONO-DIRECTIONAL LIGHT
-  WORK ZONE
-  ARROW BOARD
-  DIRECTION INDICATOR BARRICADE WITH STEADY BURN MONO-DIRECTIONAL LIGHT & 25' SPACING
-  TEMPORARY IMPACT ATTENUATOR
-  TEMPORARY CONCRETE BARRIER



FILE NAME	USER NAME	DESIGNED	REVISED	STATE OF ILLINOIS DEPARTMENT OF TRANSPORTATION	TRAFFIC CONTROL AND PROTECTION STAGE I	F.A.P. RTE.	SECTION	COUNTY	TOTAL SHEETS	SHEET NO.	
Default						348	2121-B-R-1	COOK	25	15	
						CONTRACT NO. 62B98					
						ILLINOIS FED. AID PROJECT					



LEGEND

-  TYPE III BARRICADE
-  DRUM WITH STEADY BURN MONO-DIRECTIONAL LIGHT
-  WORK ZONE
-  ARROW BOARD
-  DIRECTION INDICATOR BARRICADE WITH STEADY BURN MONODIRECTIONAL LIGHT & 25' SPACING
-  TEMPORARY IMPACT ATTENUATOR
-  TEMPORARY CONCRETE BARRIER

FILE NAME =	USER NAME = pyzono@strib	DESIGNED -	REVISED -
\\illinois.gov\pki\DOT\Documents\DOT Offices\District 1\Projects\012776\DRMData\Design\012776-shr-plan.dgn		CHECKED -	REVISED -
		DATE -	REVISED -
Default	PLOT DATE = 4/7/2016		







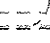
**STATE OF ILLINOIS
DEPARTMENT OF TRANSPORTATION**

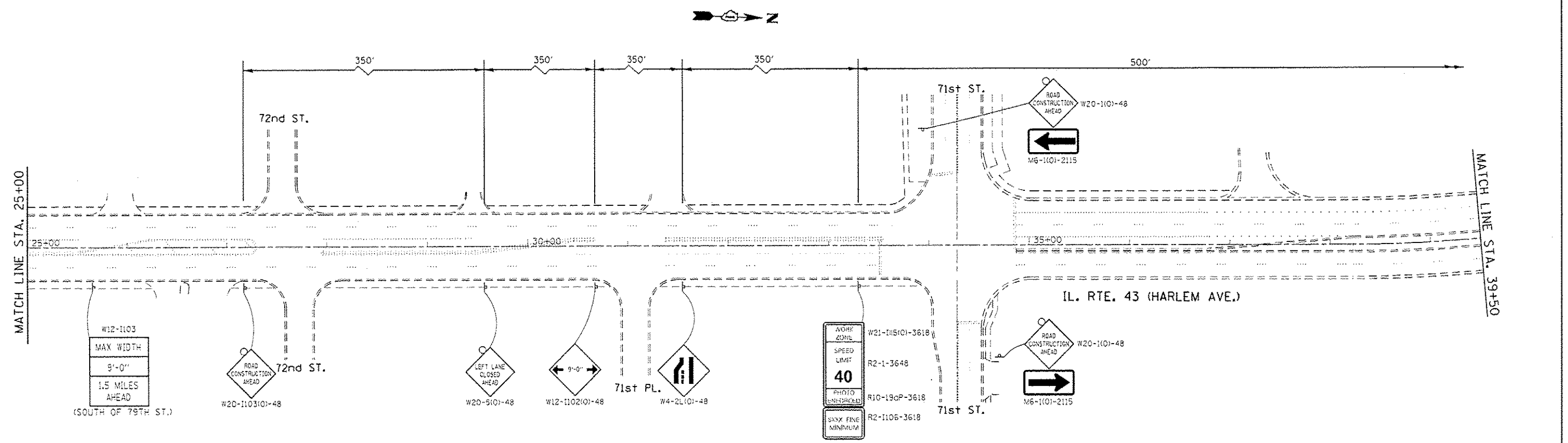
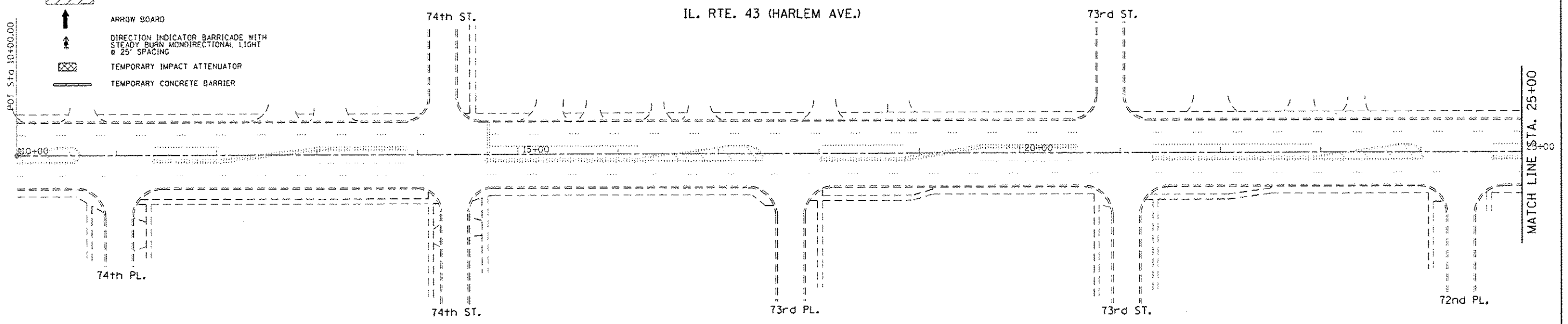
**TRAFFIC CONTROL AND PROTECTION
STAGE I**

SCALE: SHEET OF SHEETS STA. TO STA.

F.A.P. RTE.	SECTION	COUNTY	TOTAL SHEETS	SHEET NO.
34B	2121-B-R-1	COOK	25	17
CONTRACT NO. 62B98			ILLINOIS FED. AID PROJECT	



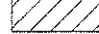


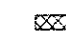
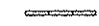
LEGEND

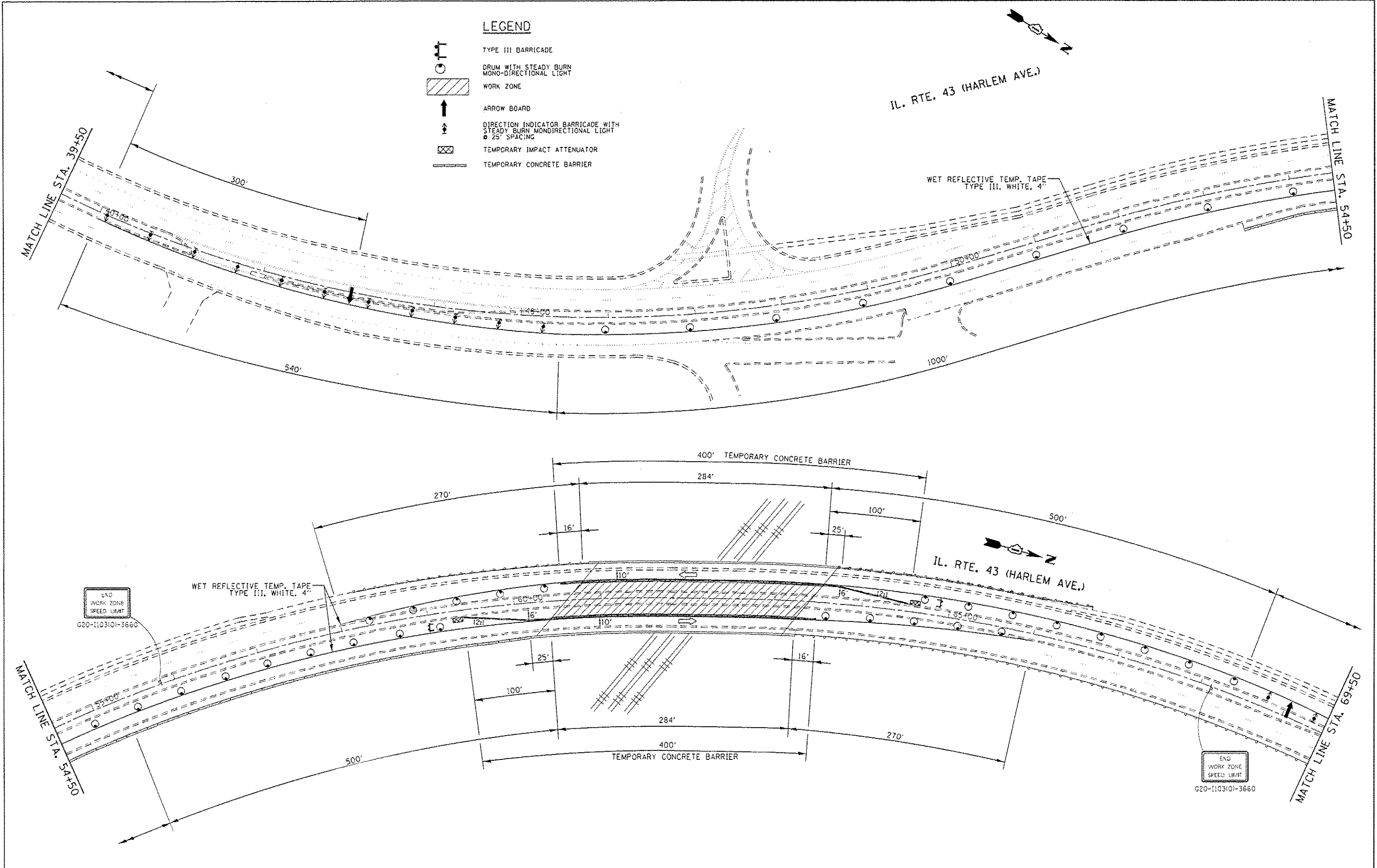
-  TYPE III BARRICADE
-  DRUM WITH STEADY BURN MONO-DIRECTIONAL LIGHT
-  WORK ZONE
-  ARROW BOARD
-  DIRECTION INDICATOR BARRICADE WITH STEADY BURN MONO-DIRECTIONAL LIGHT @ 25' SPACING
-  TEMPORARY IMPACT ATTENUATOR
-  TEMPORARY CONCRETE BARRIER



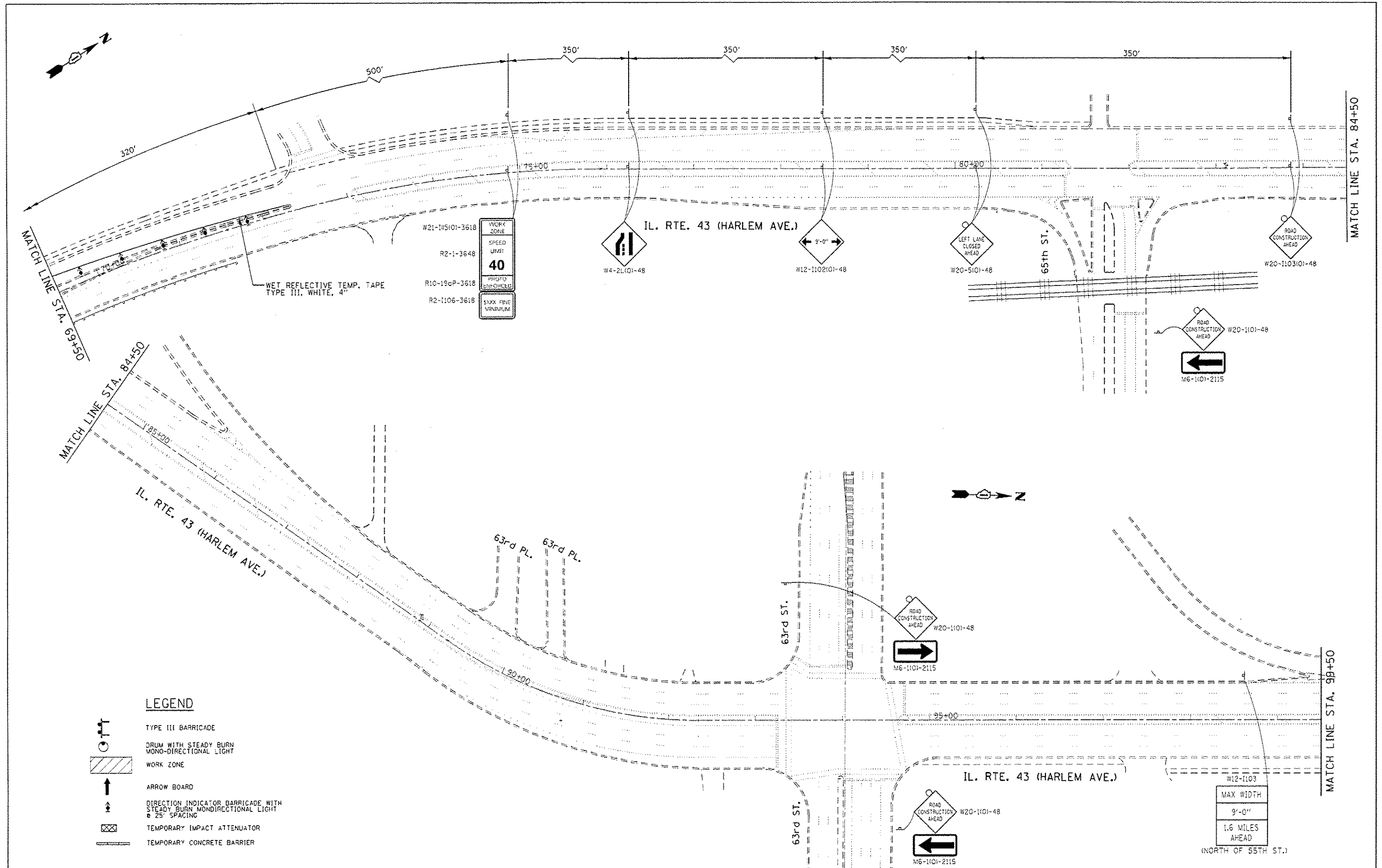
FILE NAME *	USER NAME = dylzanovskirb	DESIGNED -	REVISED -	STATE OF ILLINOIS DEPARTMENT OF TRANSPORTATION	TRAFFIC CONTROL AND PROTECTION STAGE II	F.A.P. RTE.	SECTION	COUNTY	TOTAL SHEETS	SHEET NO.	
PROJECT NO. = 110048910(ITEG)Illinois.gov\100710	PROJECT NO. = 110048910(ITEG)Illinois.gov\100710	CHECKED -	REVISED -			348	2121-B-R-1	COOK	25	18	
PLOT SCALE = 1/8" = 100'	PLOT DATE = 4/7/2018	DATE -	REVISED -			CONTRACT NO. 62B98					
Default						ILLINOIS FED. AID PROJECT					

LEGEND

-  TYPE III BARRICADE
-  DRUM WITH STEADY BURN MONO-DIRECTIONAL LIGHT
-  WORK ZONE
-  ARROW BOARD
-  DIRECTION INDICATOR BARRICADE WITH STEADY BURN MONODIRECTIONAL LIGHT @ 25' SPACING
-  TEMPORARY IMPACT ATTENUATOR
-  TEMPORARY CONCRETE BARRIER



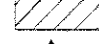



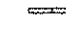


FILE NAME =	USER NAME = pyznoskiqb	DESIGNED -	REVISED -	STATE OF ILLINOIS DEPARTMENT OF TRANSPORTATION	TRAFFIC CONTROL AND PROTECTION STAGE II	F.A.P. RTE.	SECTION	COUNTY	TOTAL SHEETS	SHEET NO.
pw\110310\INTEG\Illinois.gov\110310\	...oments\110310\District 1\Projects\110310\DRAWING\Design\110310-4ht-pln.dgn	CHECKED -	REVISED -			34B	2121-B-R-1	COOK	25	19
Default	PLT SCALE = 1/8" = 1'-0"	DATE -	REVISED -			CONTRACT NO. 62B98			ILLINOIS FED. AID PROJECT	
	PLT DATE = 4/7/2016					SCALE:	SHEET	OF	SHEETS	STA.



W21-115101-3618	WORK ZONE
R2-1-3648	SPEED LIMIT
R10-19cP-3618	PHOTO EN-CIRCLED
R2-1106-3618	5XXX FINE VINYLUM

LEGEND

-  TYPE III BARRICADE
-  DRUM WITH STEADY BURN MONO-DIRECTIONAL LIGHT
-  WORK ZONE
-  ARROW BOARD
-  DIRECTION INDICATOR BARRICADE WITH STEADY BURN MONODIRECTIONAL LIGHT @ 25' SPACING
-  TEMPORARY IMPACT ATTENUATOR
-  TEMPORARY CONCRETE BARRIER

FILE NAME =	USER NAME = pyzano-skrs	DESIGNED =	REVISED =	STATE OF ILLINOIS DEPARTMENT OF TRANSPORTATION	TRAFFIC CONTROL AND PROTECTION STAGE II	F.A.P. RTE.	SECTION	COUNTY	TOTAL SHEETS	SHEET NO.	
Default	Default	Default	Default			348	2121-B-R-1	COOK	25	20	
						CONTRACT NO. 62B98					
						ILLINOIS FED. AID PROJECT					

IL. RTE. 43 (HARLEM AVE.)

MATCH LINE STA. 39+50

MATCH LINE STA. 54+50

THPL. PAVT. MARKING
LANE LINE, WHITE, 4"

IL. RTE. 43 (HARLEM AVE.)

MATCH LINE STA. 54+50

MATCH LINE STA. 69+50

THPL. PAVT. MARKING
LANE LINE, WHITE, 4"

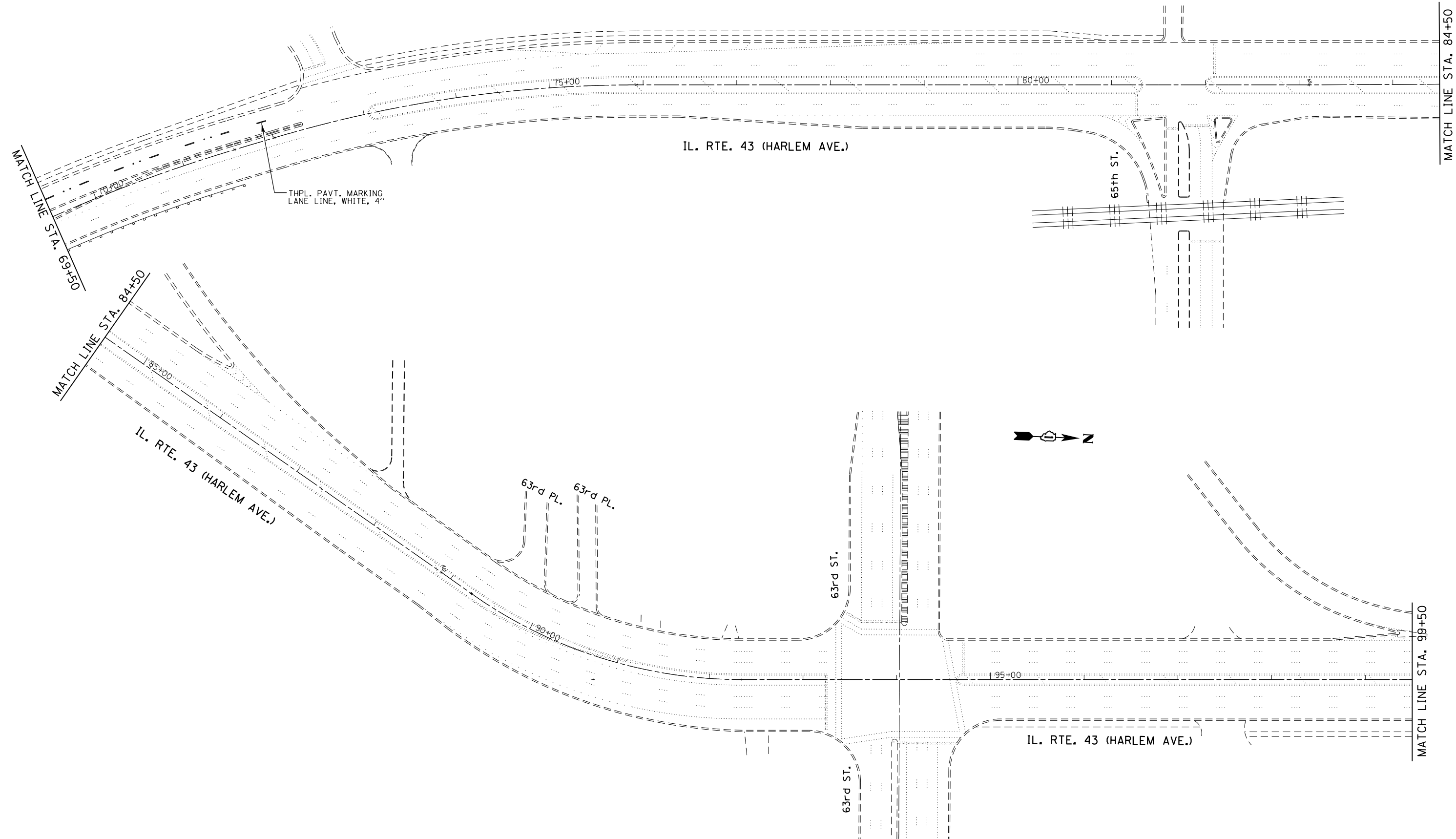
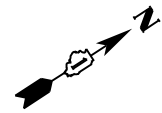
FILE NAME =	USER NAME = pyrzenowski	DESIGNED -	REVISED -
pw:\IL\084EBIDINTEG\illinois.gov\PWIDOT\Documents\IDOT Offices\District 1\Projects\DI20716\Design\DI20716-sht-plan.dgn		CHECKED -	REVISED -
Default	PLOT DATE = 3/31/2016	DATE -	REVISED -

**STATE OF ILLINOIS
DEPARTMENT OF TRANSPORTATION**

**PAVEMENT MARKING PLAN
IL 43 (HARLEM AVE.) OVER BRC RR**

SCALE: SHEET OF SHEETS STA. TO STA.

F.A.P. RTE.	SECTION	COUNTY	TOTAL SHEETS	SHEET NO.
348	2121-B-R-1	COOK	25	21
CONTRACT NO. 62B98				
ILLINOIS FED. AID PROJECT				



THPL. PAVT. MARKING
LANE LINE, WHITE, 4"

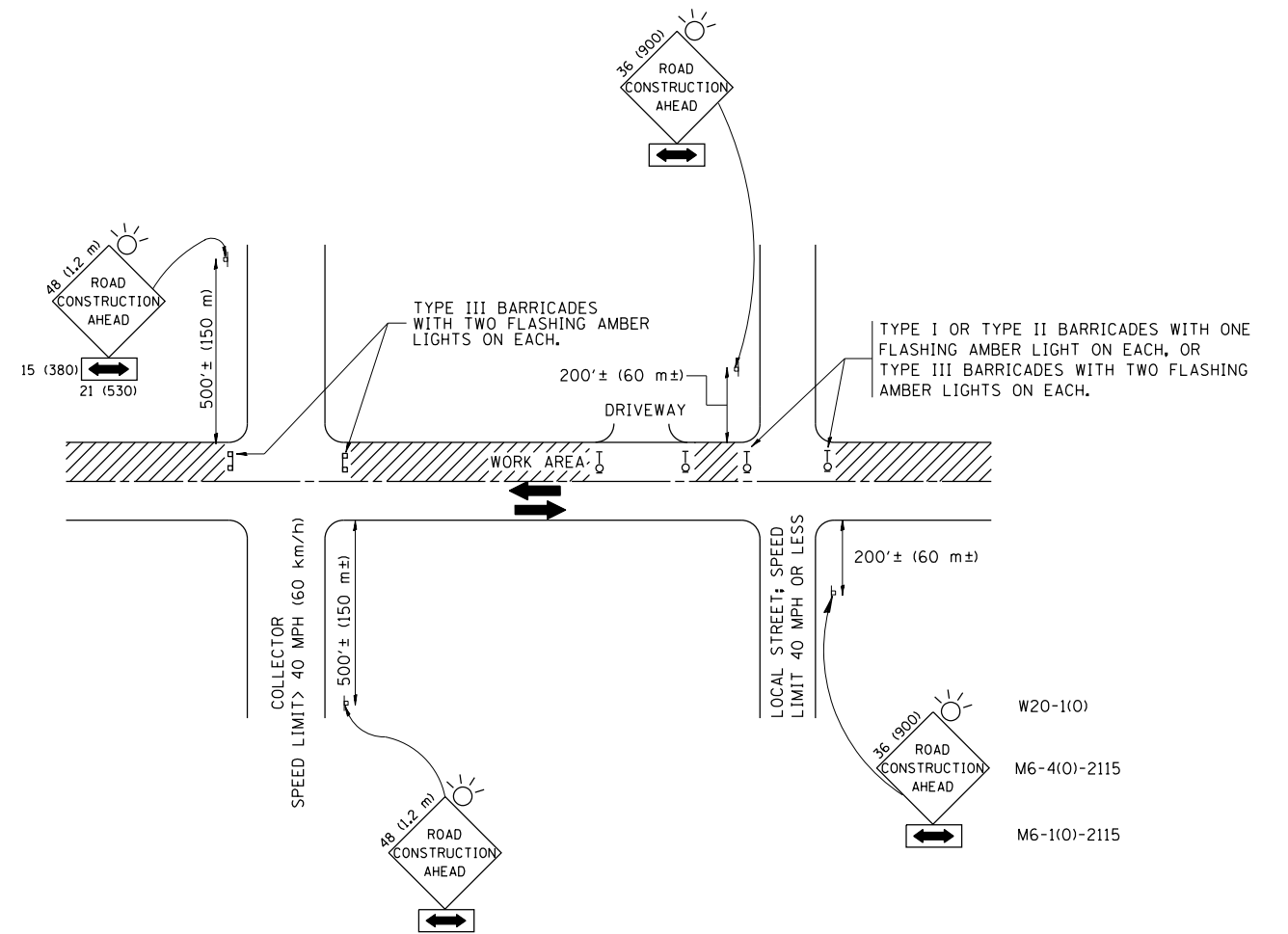
**STATE OF ILLINOIS
DEPARTMENT OF TRANSPORTATION**

**PAVEMENT MARKING PLAN
IL 43 (HARLEM AVE.) OVER BRC RR**

FILE NAME =	USER NAME = pyrzezowski	DESIGNED -	REVISED -
pw\IL084EBIDINTEG.illinois.gov\PIWIDOT\Documents\IDOT Offices\District 1\Projects\DI20716\Design\DI20716-sht-plan.dgn		CHECKED -	REVISED -
Default	PLOT SCALE = 100.0000' / in.	DATE -	REVISED -
	PLOT DATE = 3/31/2016		

SCALE:	SHEET	OF	SHEETS	STA.	TO	STA.
--------	-------	----	--------	------	----	------

F.A.P. RTE.	SECTION	COUNTY	TOTAL SHEETS	SHEET NO.
348	2121-B-R-1	COOK	25	22
CONTRACT NO. 62B98				
ILLINOIS FED. AID PROJECT				



TRAFFIC CONTROL AND PROTECTION FOR SIDE ROADS, INTERSECTIONS, AND DRIVEWAYS

NOTES:

A. FOR NO LANE RESTRICTION ON THE SIDE ROAD OR DRIVEWAYS

1. SIDE ROAD WITH A SPEED LIMIT OF 40 MPH (60 km/h) OR LESS AS SHOWN ON THE DRAWING AND AS DIRECTED BY THE ENGINEER:

a) ONE ROAD CONSTRUCTION AHEAD SIGN 36 x 36 (900x900) WITH A FLASHER AND FLAG MOUNTED ON IT APPROXIMATELY 200' (60 m) IN ADVANCE OF THE MAIN ROUTE.

b) THE CLOSED PORTION OF THE MAIN ROUTE SHALL BE PROTECTED BY BLOCKING WITH TYPE I, TYPE II OR TYPE III BARRICADES, 1/3 OF THE CROSS SECTION OF THE CLOSED PORTION.

2. SIDE ROAD WITH A SPEED LIMIT GREATER THAN 40 MPH (60 km/h) AS SHOWN ON THE DRAWING AND AS DIRECTED BY THE ENGINEER:

a) ONE ROAD CONSTRUCTION AHEAD SIGN 48 x 48 (1.2 m x 1.2 m) WITH A FLASHER MOUNTED ON IT APPROXIMATELY 500' (150 m) IN ADVANCE OF THE MAIN ROUTE.

b) THE CLOSED PORTION OF THE MAIN ROUTE SHALL BE PROTECTED BY BLOCKING WITH TYPE III BARRICADES, 1/2 OF THE CROSS SECTION OF THE CLOSED PORTION.

3. WHEN THE SIDE ROAD LIES BETWEEN THE BEGINNING OF THE MAINLINE SIGNING AND THE WORK ZONE, A SINGLE HEADED ARROW (M6-1) SHALL BE USED IN LIEU OF THE DOUBLE HEADED ARROW (M6-4).

B. FOR A LANE CLOSURE ON A SIDE ROAD OR DRIVEWAY:

USE APPLICABLE PORTIONS OF THE TYPICAL APPLICATION OF TRAFFIC CONTROL DEVICES (STD. 701501, STD. 701606 OR THE APPROPRIATE STANDARD). THE SPACING OF SIGNS AND BARRICADES SHALL BE ADJUSTED FOR FIELD CONDITIONS AS DIRECTED BY THE ENGINEER. THE DIRECTIONAL ARROW SHALL BE COVERED OR REMOVED WHEN NO LONGER CONSISTENT WITH THE SIDE ROAD LANE CLOSURE.

C. ADVANCE WARNING SIGNS ARE TO BE OMITTED ON DRIVEWAY UNLESS OTHERWISE NOTED.

D. THE TRAFFIC CONTROL AND PROTECTION FOR SIDE ROADS, INTERSECTIONS, AND DRIVEWAYS SHALL BE INCIDENTAL TO THE COST OF SPECIFIED TRAFFIC CONTROL STANDARDS OR ITEMS.

All dimensions are in millimeters (inches) unless otherwise shown.

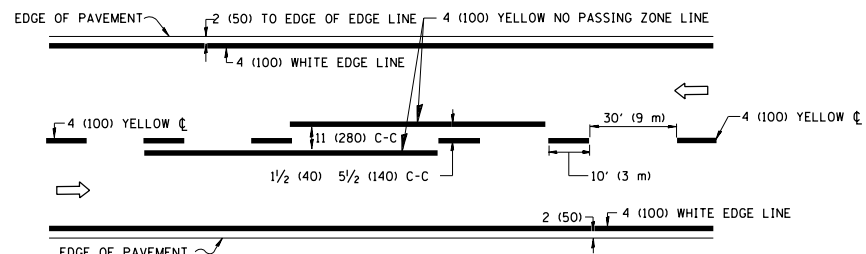
FILE NAME =	USER NAME = pyrzenowski	DESIGNED - LHA	REVISED - J. OBERLE 10-18-95
p:\work\084EBID\INTEG\illinois.gov\PIWIDOT\Documents\IDOT Offices\District 1\Projects\DI207\Browns\Design\DI20716-sht-plan.dgn			REVISED - A. HOUSEH 03-06-96
	PLOT SCALE = 100.0000' / in.	CHECKED -	REVISED - A. HOUSEH 10-15-96
	PLOT DATE = 3/30/2016	DATE - 06-89	REVISED - T. RAMMACH 01-06-00

**STATE OF ILLINOIS
DEPARTMENT OF TRANSPORTATION**

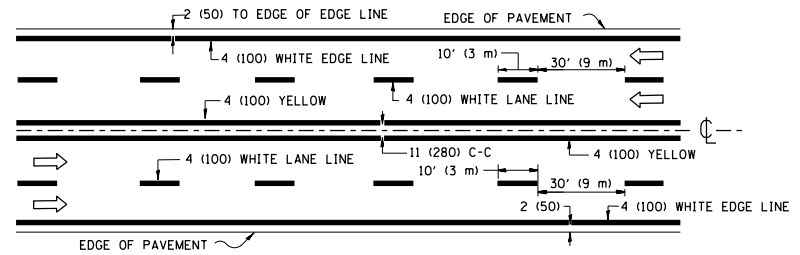
**TRAFFIC CONTROL AND PROTECTION FOR
SIDE ROADS, INTERSECTIONS, AND DRIVEWAYS**

SCALE: NONE SHEET NO. 1 OF 1 SHEETS STA. TO STA.

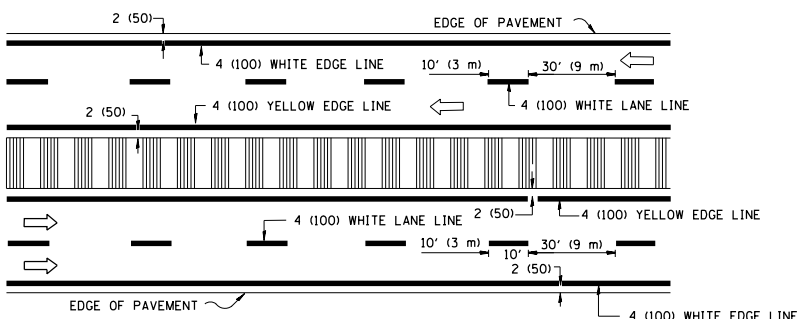
F.A. RTE.	SECTION	COUNTY	TOTAL SHEETS	SHEET NO.
348	2121-B-R-1	COOK	25	23
TC-10			CONTRACT NO. 62B98	
FED. ROAD DIST. NO. 1 ILLINOIS FED. AID PROJECT				



2-LANE ROADWAY

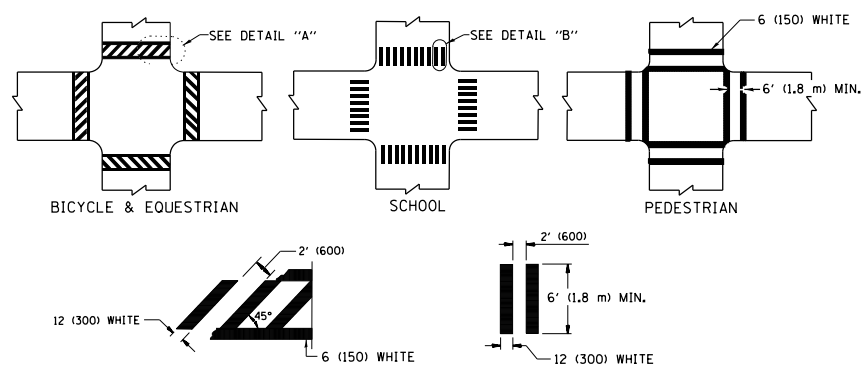


MULTI-LANE UNDIVIDED



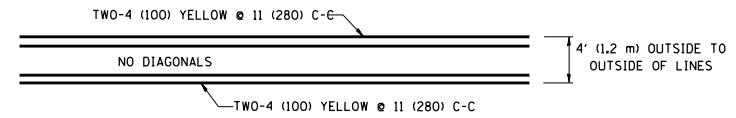
MULTI-LANE DIVIDED WITH MEDIAN

TYPICAL LANE AND EDGE LINE MARKING

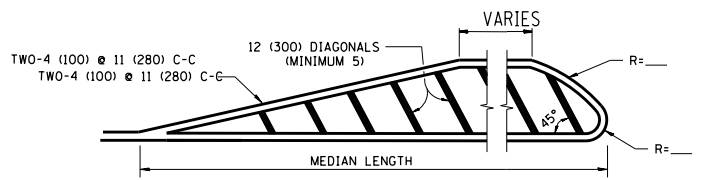


TYPICAL CROSSWALK MARKING

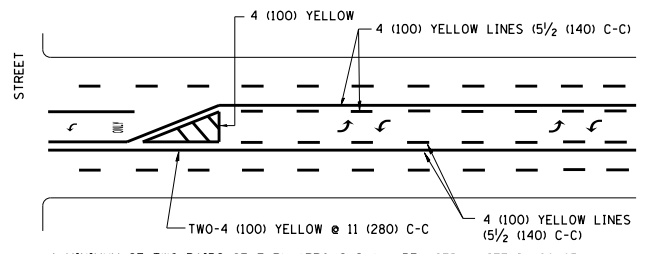
* MARKINGS SHALL BE INSTALLED PARALLEL TO THE CENTERLINE OF THE ROAD WHICH IT CROSSES



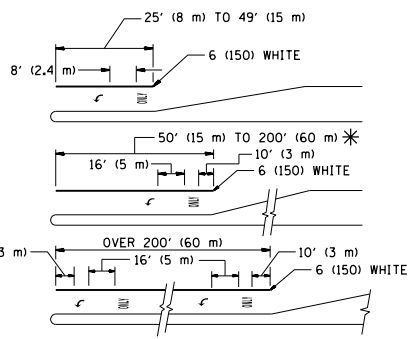
4' (1.2 m) WIDE MEDIANS ONLY



MEDIANS OVER 4' (1.2 m) WIDE



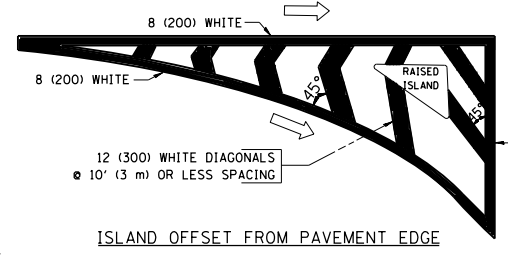
MEDIAN WITH TWO-WAY LEFT TURN LANE TYPICAL PAINTED MEDIAN MARKING



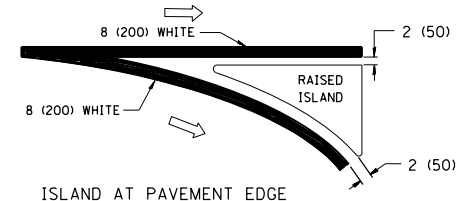
TYPICAL LEFT (OR RIGHT) TURN LANE TYPICAL TURN LANE MARKING

FULL SIZE LETTERS 8" (2.4 m) AND ARROWS SHALL BE USED. AREA = 15.6 SQ. FT. (1.5 m²) ONLY AREA = 20.8 SQ. FT. (1.9 m²)

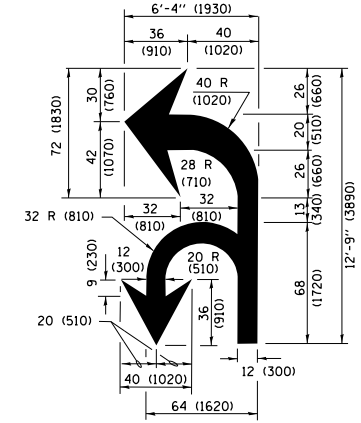
* TURN LANES IN EXCESS OF 400' (120 m) IN LENGTH MAY HAVE AN ADDITIONAL SET OF ARROW - "ONLY" INSTALLED MIDWAY BETWEEN THE OTHER TWO SETS OF ARROW - "ONLY".



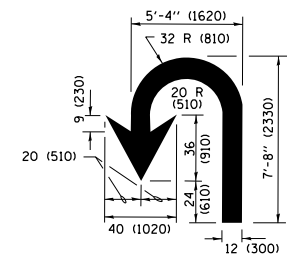
ISLAND OFFSET FROM PAVEMENT EDGE



ISLAND AT PAVEMENT EDGE TYPICAL ISLAND MARKING



COMBINATION LEFT AND U-TURN



U-TURN

LANE REDUCTION TRANSITION

* LANE REDUCTION ARROWS REQUIRED AT SPEEDS OF 45 MPH OR GREATER OR WHEN SPECIFIED IN PLANS.

D(FT)	SPEED LIMIT
345	30
425	35
500	40
580	45
665	50
750	55

TYPE OF MARKING	WIDTH OF LINE	PATTERN	COLOR	SPACING /REMARKS
CENTERLINE ON 2 LANE PAVEMENT	4 (100)	SKIP-DASH	YELLOW	10' (3 m) LINE WITH 30' (9 m) SPACE
CENTERLINE ON MULTI-LANE UNDIVIDED PAVEMENT	2 @ 4 (100)	SOLID	YELLOW	11 (280) C-C
NO PASSING ZONE LINES FOR ONE DIRECTION FOR BOTH DIRECTIONS	4 (100) 2 @ 4 (100)	SOLID SOLID	YELLOW YELLOW	5 1/2 (140) C-C FROM SKIP-DASH CENTERLINE 11 (280) C-C OMIT SKIP-DASH CENTERLINE BETWEEN
LANE LINES	4 (100) 5 (125) ON FREEWAYS	SKIP-DASH SKIP-DASH	WHITE WHITE	10' (3 m) LINE WITH 30' (9 m) SPACE
DOTTED LINES (EXTENSIONS OF CENTER, LANE OR TURN LANE MARKINGS)	SAME AS LINE BEING EXTENDED	SKIP-DASH	SAME AS LINE BEING EXTENDED	2' (600) LINE WITH 6' (1.8 m) SPACE
EDGE LINES	4 (100)	SOLID	YELLOW-LEFT WHITE-RIGHT	OUTLINE MEDIANS IN YELLOW
TURN LANE MARKINGS	6 (150) LINE; FULL SIZE LETTERS & SYMBOLS (8" (2.4m))	SOLID	WHITE	SEE TYPICAL TURN LANE MARKING DETAIL
TWO WAY LEFT TURN MARKING	2 @ 4 (100) EACH DIRECTION 8' (2.4m) LEFT ARROW	SKIP-DASH AND SOLID IN PAIRS	YELLOW WHITE	10' (3 m) LINE WITH 30' (9 m) SPACE FOR SKIP-DASH; 5 1/2 (140) C-C BETWEEN SOLID LINE AND SKIP-DASH LINE SEE TYPICAL TWO-WAY LEFT TURN MARKING DETAIL
CROSSWALK LINES (PEDESTRIAN) A. DIAGONALS (BIKE & EQUESTRIAN) B. LONGITUDINAL BARS (SCHOOL)	2 @ 6 (150) 12 (300) @ 45° 12 (300) @ 90°	SOLID SOLID SOLID	WHITE WHITE WHITE	NOT LESS THAN 6' (1.8 m) APART 2' (600) APART 2' (600) APART SEE TYPICAL CROSSWALK MARKING DETAILS.
STOP LINES	24 (600)	SOLID	WHITE	PLACE 4' (1.2 m) IN ADVANCE OF AND PARALLEL TO CROSSWALK, IF PRESENT, OTHERWISE, PLACE AT DESIRED STOPPING POINT, PARALLEL TO CROSSROAD CENTERLINE, WHERE POSSIBLE.
PAINTED MEDIANS	2 @ 4 (100) WITH 12 (300) DIAGONALS @ 45° NO DIAGONALS USED FOR 4' (1.2 m) WIDE MEDIANS	SOLID	YELLOW; TWO WAY TRAFFIC WHITE; ONE WAY TRAFFIC	11 (280) C-C FOR THE DOUBLE LINE SEE TYPICAL PAINTED MEDIAN MARKING.
GORE MARKING AND CHANNELIZING LINES	8 (200) WITH 12 (300) DIAGONALS @ 45°	SOLID	WHITE	DIAGONALS: 15' (4.5 m) C-C (LESS THAN 30MPH (50 km/h)) 20' (6 m) C-C 30MPH (50 km/h) TO 45MPH (70 km/h) 30' (9 m) C-C (OVER 45MPH (70 km/h))
RAILROAD CROSSING	24 (600) TRANSVERSE LINES; "RR" IS 6' (1.8 m) LETTERS; 16 (400) LINE FOR "X"	SOLID	WHITE	SEE STATE STANDARD 780001 AREA OF: "R"=3.6 SQ. FT. (0.33 m ²) EACH "X"=54.0 SQ. FT. (5.0 m ²)
SHOULDER DIAGONALS (REQUIRED FOR SHOULDERS ≥ 8')	12 (300) @ 45°	SOLID	WHITE - RIGHT YELLOW - LEFT	50' (15 m) C-C (LESS THAN 30MPH (50 km/h)) 75' (22.5 m) C-C 30 MPH (50 km/h) TO 45MPH (70 km/h) 150' (45 m) C-C (OVER 45MPH (70 km/h))
U TURN ARROW	SEE DETAIL	SOLID	WHITE	16.3 SF
2 ARROW COMBINATION LEFT AND U TURN	SEE DETAIL	SOLID	WHITE	30.4 SF

FOR FURTHER DETAILS ON PAVEMENT MARKING REFER TO STANDARD SPECIFICATIONS FOR ROAD AND BRIDGE CONSTRUCTION AND STATE STANDARD 780001.

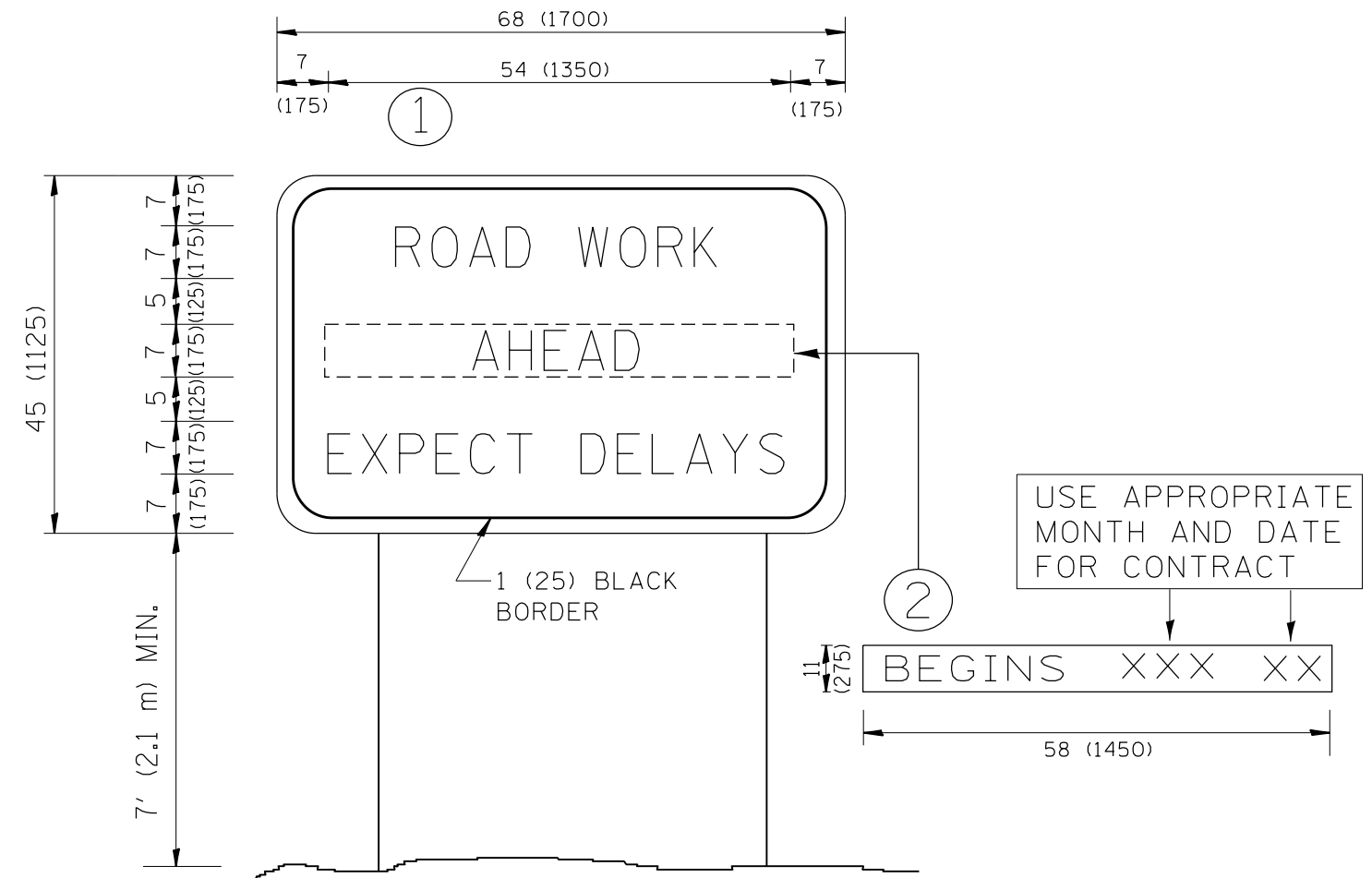
All dimensions are in inches (millimeters) unless otherwise shown.

FILE NAME =	USER NAME = pyznowskirb	DESIGNED - EVERS	REVISED - T. RAMMACHER 10-27-94
pw\1\084EBIDINTEG\illinois.gov\PIWIDOT\Documents\DOT Offices\District 1\Projects\DI2076\Design\DI20716-sht-pln.dgn		CHECKED -	REVISED - C. JUCIUS 09-09-09
Default	PLOT SCALE = 100.0000' / in.	DATE - 03-19-90	REVISED - C. JUCIUS 07-01-13
	PLOT DATE = 3/30/2016		REVISED - C. JUCIUS 12-21-15

STATE OF ILLINOIS DEPARTMENT OF TRANSPORTATION

DISTRICT ONE TYPICAL PAVEMENT MARKINGS			
SCALE: NONE	SHEET 1	OF 1 SHEETS	STA. TO STA.

F.A. RTE.	SECTION	COUNTY	TOTAL SHEETS	SHEET NO.
348	2121-B-R-1	COOK	25	24
TC-13		CONTRACT NO. 62B98		
ILLINOIS FED. AID PROJECT				



NOTES:

1. USE BLACK LETTERING ON ORANGE BACKGROUND.
2. ERECT SIGNS IN ADVANCE OF THE LOCATION FOR THE "ROAD CONSTRUCTION AHEAD" SIGN AT LOCATIONS AS DIRECTED BY THE ENGINEER.
3. ERECT SIGN ① WITH INSTALLED PANEL ② ONE WEEK PRIOR TO THE START OF CONSTRUCTION.
4. REMOVE PANEL ② SOON AFTER THE START OF CONSTRUCTION.
5. SEE SPECIAL PROVISION FOR "TEMPORARY INFORMATION SIGNING" FOR ADDITIONAL INFORMATION.
6. ONE SIGN ASSEMBLY EQUALS 25.70 SQ. FT. (2.3 SQ. M.)
7. SHALL BE PAID FOR AS TEMPORARY INFORMATION SIGNING.

ALL DIMENSIONS ARE IN INCHES (MILLIMETERS) UNLESS OTHERWISE SHOWN.

FILE NAME =	USER NAME = pyrzenowski	DESIGNED -	REVISED - R. MIRS 09-15-97	STATE OF ILLINOIS DEPARTMENT OF TRANSPORTATION	ARTERIAL ROAD INFORMATION SIGN	F.A. RTE.	SECTION	COUNTY	TOTAL SHEETS	SHEET NO.
p:\11\084EBIDINTEG.illinois.gov\PIWIDOT\Documents\DOT Offices\District 1\Projects\DI20716\Design\DI20716-sht-plan.dgn	DRWN	REVISED - R. MIRS 12-11-97	REVISED - T. RAMMACHER 02-02-99			348	2121-B-R-1	COOK	25	25
PLOT SCALE = 100.0000' / 1in.	CHECKED -	REVISED - C. JUCIUS 01-31-07	REVISED -			TC-22		CONTRACT NO. 62B98		
PLOT DATE = 3/30/2016	DATE -					SCALE: NONE	SHEET NO. 1 OF 1 SHEETS	STA.	TO STA.	FED. ROAD DIST. NO. 1 ILLINOIS FED. AID PROJECT