

STATE OF ILLINOIS
DEPARTMENT OF TRANSPORTATION
DIVISION OF HIGHWAYS
PROPOSED
HIGHWAY PLANS

F.A.P. RTE.	SECTION	COUNTY	TOTAL SHEETS	SHEET NO.
326	120RS-4	LIVINGSTON	31	1
		ILLINOIS	CONTRACT NO. 66F27	

INDEX OF SHEETS

1	COVER SHEET
2	GENERAL NOTES & COMMITMENTS
3-5	SUMMARY OF QUANTITIES
6	TYPICAL SECTIONS
7-8	SCHEDULES
9	LAYOUT MAP & CONTROL POINTS
10-28	ADA RAMP DETAILS
29	PAVEMENT MARKING DETAIL
30-31	DETAILS

LIST OF ILLINOIS DOT HIGHWAY STANDARDS

000001-06	STANDARD SYMBOLS, ABBREVIATIONS AND PATTERNS
001006	DECIMAL OF AN INCH AND OF A FOOT
280001-07	TEMPORARY EROSION CONTROL SYSTEMS
424001-08	PERPENDICULAR CURB RAMPS FOR SIDEWALKS
424006-02	DIAGONAL CURB RAMPS FOR SIDEWALKS
424011-02	CORNER PARALLEL CURB RAMPS FOR SIDEWALKS
424016-02	MID-BLOCK CURB RAMPS FOR SIDEWALKS
424021-03	DEPRESSED CORNER FOR SIDEWALKS
424031-01	MEDIAN PEDESTRIAN CROSSINGS
606001-06	CONCRETE CURB TYPE B AND COMBINATION CONCRETE CURB AND GUTTER
606301-04	PC CONCRETE ISLANDS AND MEDIANS
667101-02	PERMANENT SURVEY MARKERS
701001-02	OFF-ROAD OPERATIONS 2L, 2W, MORE THAN 15' (4.5 m) AWAY
701006-05	OFF-ROAD OPERATIONS 2L, 2W, 15' (4.5 m) TO 24" (600 mm) FROM PAVEMENT EDGE
701301-04	LANE CLOSURE, 2L, 2W, SHORT TIME OPERATIONS
701311-03	LANE CLOSURE, 2L, 2W, MOVING OPERATIONS - DAY ONLY
701501-06	URBAN LANE CLOSURE, 2L, 2W, UNDIVIDED
701701-10	URBAN LANE CLOSURE, MULTILANE INTERSECTION
701801-06	SIDEWALK, CORNER OR CROSSWALK CLOSURE
701901-05	TRAFFIC CONTROL DEVICES
780001-05	TYPICAL PAVEMENT MARKINGS
781001-04	TYPICAL APPLICATIONS RAISED REFLECTIVE PAVEMENT MARKERS
782001-01	PRISMATIC CURB REFLECTORS

FAP ROUTE 326 (IL 47)
SECTION 120RS-4
PROJECT: ACNHPP-0326(096)
3P MILLING & RESURFACING
LIVINGSTON COUNTY

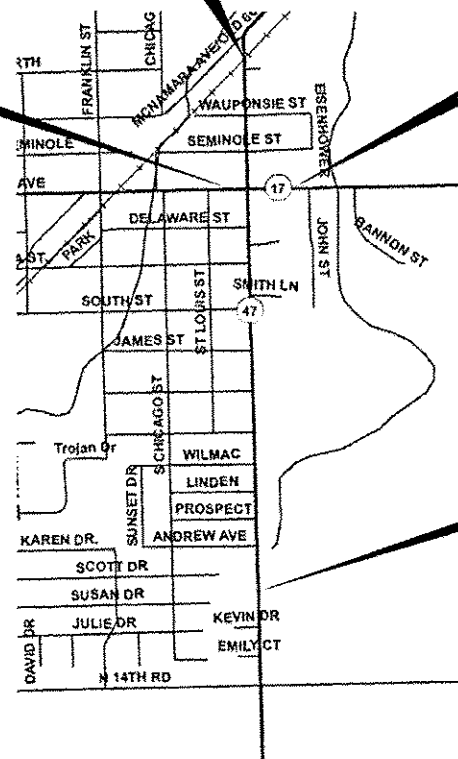
C-93-039-16

BEGIN IMPROVEMENT
IL 47 STA 2+88

BEGIN RESURFACING
IL 17 STA 8+94

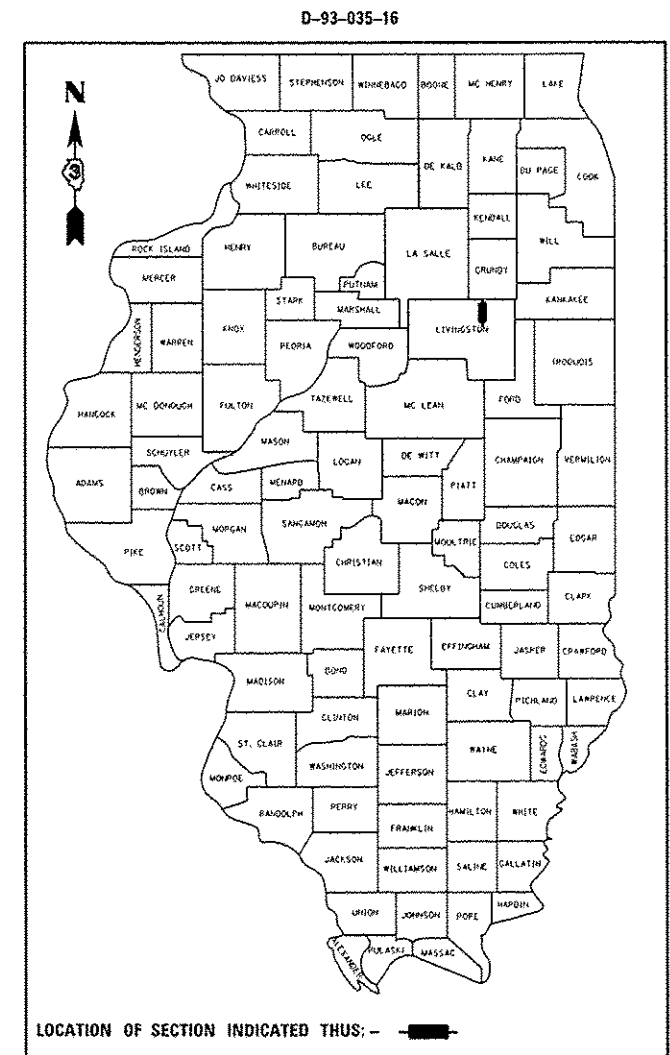
END RESURFACING
IL 17 STA 16+65

END IMPROVEMENT
IL 47 STA 62+50



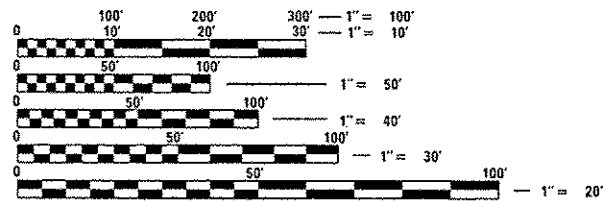
LOCATION MAP
 N.T.S.

GROSS LENGTH = NET LENGTH = 5,962 FT. = 1.129 MILE



LOCATION OF SECTION INDICATED THUS: —

OTHER PRINCIPAL ARTERIAL
 2015 ADT = 5500
 PV = 75% SU = 10% MU = 15%



FULL SIZE PLANS HAVE BEEN PREPARED USING STANDARD ENGINEERING SCALES. REDUCED SIZED PLANS WILL NOT CONFORM TO STANDARD SCALES. IN MAKING MEASUREMENTS ON REDUCED PLANS, THE ABOVE SCALES MAY BE USED.

J.U.L.I.E.
 JOINT UTILITY LOCATION INFORMATION FOR EXCAVATION
 1-800-892-0123
 OR 811

PROJECT ENGINEER JOE KANNEL, P.E.
UNIT CHIEF MICHELE LINDEMANN, P.E.
 DISTRICT 3 NO. (815) 434-6131
 CONTRACT NO. 66F27

STATE OF ILLINOIS
 DEPARTMENT OF TRANSPORTATION

SUBMITTED March 18 2016
Paul Coetz REGIONAL ENGINEER
Matthew M. Addis ENGINEER OF DESIGN AND ENVIRONMENT
Maile DIRECTOR OF PROGRAM DEVELOPMENT

PRINTED BY THE AUTHORITY
OF THE STATE OF ILLINOIS

COMMITMENTS

GENERAL NOTES

THE THICKNESS OF HMA SHOWN ON THE PLANS IS THE NOMINAL THICKNESS. DEVIATIONS FROM THE NOMINAL THICKNESS WILL BE PERMITTED WHEN SUCH DEVIATIONS OCCUR DUE TO IRREGULARITIES IN THE EXISTING SURFACE OR BASE ON WHICH THE HMA IS PLACED.

EXCEPT AS NOTED ON THE PLANS, PAVEMENT GRADES SHOWN ARE AT THE TOP OF PAVEMENT SURFACES.

THE ENGINEER WILL BE THE SOLE JUDGE CONCERNING CURING TIME FOR THE VARIOUS HMA LIFTS.

FOR STABILIZATION, ALL TYPE III BARRICADES WILL REQUIRE A MINIMUM OF FOUR SAND BAGS PER BARRICADE.

SEEDING WILL NOT BE PERMITTED AT ANY TIME WHEN THE GROUND IS FROZEN, WET, OR IN AN UNTILLABLE CONDITION. LOCATIONS TO BE SEEDED WILL BE DETERMINED BY THE ENGINEER.

ALL EXCAVATED MATERIAL, WHICH INCLUDES DIGGING OR GRADING OF ANY SOIL OR FILL MATERIAL, WITH THE EXCEPTION OF AGGREGATE FILLS, MUST BE INCORPORATED WITHIN THE IDOT RIGHT OF WAY DUE TO ENVIRONMENTAL DOCUMENTATION REQUIREMENTS.

DETECTABLE WARNING SURFACES SHALL EXTEND 2.0 FT MINIMUM IN THE DIRECTION OF PEDESTRIAN TRAVEL. AT CURB RAMPS AND BLENDED TRANSITIONS, DETECTABLE WARNING SURFACES SHALL EXTEND THE FULL WIDTH OF THE RAMP RUN (EXCLUDING ANY FLARES) OR BLENDED TRANSITIONS. SOME DETECTABLE WARNING PRODUCTS REQUIRE A CONCRETE BORDER FOR PROPER INSTALLATION. THE CONCRETE BORDER SHALL NOT EXCEED 2 INCHES.

ALL ELEVATIONS REFERRING TO U.S.G.S. MEAN SEA LEVEL DATUM.

ANY REFERENCE TO A STANDARD IN THESE PLANS SHALL BE INTERPRETED TO MEAN THE EDITION AS INDICATED BY THE SUBNUMBER SHOWN IN THE LIST OF STANDARDS OR THE COPY INCLUDED IN THESE PLANS.

THE FOLLOWING RATES OF APPLICATION HAVE BEEN USED IN CALCULATING PLAN QUANTITIES:

GRANULAR MATERIALS	2.05	TONS / CU YD
HMA RESURFACING	112	LBS / SQ YD / IN
SHORT TERM PAVEMENT MARKING	10	FT / 100 FT OF APPLICATION
MIX FOR CRACKS, JTS & FLGWYS	0.0003	TONS / SQ YD
LEVEL BINDER (HAND METHOD)	0.0005	TONS / SQ YD

THE CONTRACTOR SHALL CONTACT JULIE AT LEAST 48 HOURS PRIOR TO EXCAVATION TO DETERMINE WHICH UTILITIES ARE IN THE AREA.

LOCATION(S):	IL 47 & IL 17
MIXTURE USE(S):	SURFACE (2 Lfts)
BINDER GRADE (PG):	SBS PG 70-22
DESIGN AIR VOIDS:	4.0% @ N90
MIXTURE COMPOSITION: (MIXTURE GRADATION)	IL 9.5
FRICTION AGGREGATE:	Mixture D
MIXTURE WEIGHT:	112 LB/SY/IN
QUALITY MANAGEMENT PROGRAM:	QC/QA
SUBLOT SIZE:	N/A
DENSITY TEST METHOD:	Cores

STATE OF ILLINOIS
DEPARTMENT OF TRANSPORTATION
DISTRICT THREE
AS BUILT INFORMATION

SUPERVISING CONSTRUCTION FIELD ENGINEER

RESIDENT ENGINEER / TECHNICIAN

START & END DATES
OF CONSTRUCTION:

INSPECTORS:

STATE OF ILLINOIS
DEPARTMENT OF TRANSPORTATION
DISTRICT THREE

PREPARED BY: Dr. Basil
DISTRICT STUDIES & PLANS ENGINEER

DATE: March 18, 2016

EXAMINED BY: Habit K. Jeger
DISTRICT CONSTRUCTION ENGINEER

W. J. Phillips
DISTRICT MATERIALS ENGINEER

Brian A. Schuber
DISTRICT OPERATIONS ENGINEER

STATE OF ILLINOIS
DEPARTMENT OF TRANSPORTATION

GENERAL NOTES

FILE NAME: p:\11084EBID\TEG\Illinois.gov\IDOT\Documents\IDOT Offices\District 3\Projects\0366\Drawings\0366F27-shr-cover.dgn	USER NAME: JULIANA	DESIGNED: -	REVISED: -	STATE OF ILLINOIS DEPARTMENT OF TRANSPORTATION	SCALE: SHEET OF SHEETS STA. TO STA.	F.A.P. RTE. 326	SECTION 120RS-4	COUNTY LIVINGSTON	TOTAL SHEETS 31	SHEET NO. 2
Default	PLOT SCALE: 99.9757' / in.	CHECKED: -	REVISED: -			ILLINOIS FED. AID PROJECT				
	PLOT DATE: 3/11/2016	DATE: -	REVISED: -			CONTRACT NO. 66F27				

CONSTR. CODE

80% FED.
20% STATE

CODE NO.	ITEM	UNIT	TOTAL QUANTITY	ROADWAY
				0005 NONE
40600400	MIXTURE FOR CRACKS, JOINTS, AND FLANGWAYS	TON	6.1	6.1
40600545	LEVELING BINDER (HAND METHOD), N90	TON	10.33	10.33
40600990	TEMPORARY RAMP	SO YD	207	207
40603545	POLYMERIZED HOT-MIX ASPHALT SURFACE COURSE, MIX "D", N90	TON	3374	3374
40700100	BITUMINOUS MATERIALS (TACK COAT)	POUND	13933	13933
42400100	PORTLAND CEMENT CONCRETE SIDEWALK 4 INCH	SQ FT	1630	1630
42400800	DETECTABLE WARNINGS	SQ FT	165.4	165.4
44000600	SIDEWALK REMOVAL	SQ FT	1624	1624
44003100	MEDIAN REMOVAL	SQ FT	205	205
48101200	AGGREGATE SHOULDERS, TYPE B	TON	22.3	22.3
56109210	WATER VALVES TO BE ADJUSTED	EACH	1	1
66700205	PERMANENT SURVEY MARKERS, TYPE I	EACH	1	1
67000400	ENGINEER'S FIELD OFFICE, TYPE A	CAL MO	3	3
67100100	MOBILIZATION	LSUM	1	1

14

△ SPECIALTY ITEMS

FILE NAME =	USER NAME = JULIANA	DESIGNED -	REVISED -	STATE OF ILLINOIS DEPARTMENT OF TRANSPORTATION	SUMMARY OF QUANTITIES			F.A.P. RTE.	SECTION	COUNTY	TOTAL SHEETS	SHEET NO.
pw:\IL084EBIDINTEG\illinois.gov\PHOOT\Documents\1007_Offices\District 3\Projects\036666\036666.dgn		CHECKED -	REVISED -					326	120RS-4	LIVINGSTON	31	3
Default	PLOT SCALE = 100.1385' / in.	DATE -	REVISED -		SCALE:	SHEET	OF	SHEETS	STA.	TO STA.	CONTRACT NO. 66F27	
	PLOT DATE = 3/16/2016										ILLINOIS FED. AID PROJECT	

CONSTR. CODE
80% FED.
20% STATE

CODE NO.	ITEM	UNIT	TOTAL QUANTITY	ROADWAY
				0005 NONE
70102620	TRAFFIC CONTROL AND PROTECTION, STANDARD 701501	LSUM	1	1
70102635	TRAFFIC CONTROL AND PROTECTION, STANDARD 701701	LSUM	1	1
70102640	TRAFFIC CONTROL AND PROTECTION, STANDARD 701801	LSUM	1	1
70300100	SHORT TERM PAVEMENT MARKING	FOOT	2210	2210
70300150	SHORT TERM PAVEMENT MARKING REMOVAL	SQ FT	245	245
70300210	TEMPORARY PAVEMENT MARKING LETTERS AND SYMBOLS	SQ FT	122.4	122.4
70300220	TEMPORARY PAVEMENT MARKING - LINE 4"	FOOT	1655	1655
70300240	TEMPORARY PAVEMENT MARKING - LINE 6"	FOOT	2701	2701
70300250	TEMPORARY PAVEMENT MARKING - LINE 8"	FOOT	255	255
70300260	TEMPORARY PAVEMENT MARKING - LINE 12"	FOOT	840	840
70300280	TEMPORARY PAVEMENT MARKING - LINE 24"	FOOT	178	178
Δ 78000100	THERMOPLASTIC PAVEMENT MARKING - LETTERS AND SYMBOLS	SQ FT	122.4	122.4
Δ 78000200	THERMOPLASTIC PAVEMENT MARKING - LINE 4"	FOOT	1655	1655
Δ 78000400	THERMOPLASTIC PAVEMENT MARKING - LINE 6"	FOOT	2701	2701

14

Δ SPECIALTY ITEMS

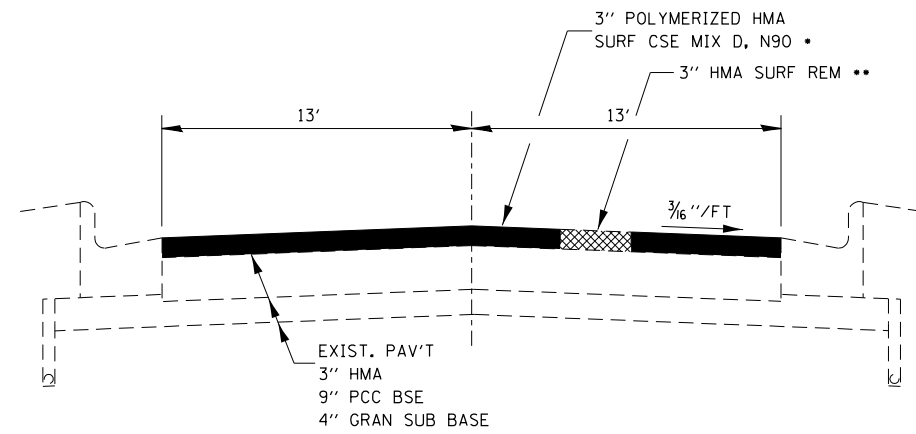
FILE NAME =	USER NAME = JULIANS	DESIGNED -	REVISED -	STATE OF ILLINOIS DEPARTMENT OF TRANSPORTATION	SUMMARY OF QUANTITIES				F.A.P. RTE.	SECTION	COUNTY	TOTAL SHEETS	SHEET NO.
\\L084EBIDINTEG.illinois.gov\PI\DOT\Documents\100T\Offices\District 3\Projects\0366\DRAWING\0366F27-shr-500.dgn		CHECKED -	REVISED -						326	120RS-4	LIVINGSTON	31	4
PLOT SCALE = 99.9614' / in.		DATE -	REVISED -		SCALE:	SHEET OF SHEETS	STA. TO STA.	CONTRACT NO. 66F27					
PLOT DATE = 3/16/2016					[ILLINOIS] FED. AID PROJECT								

CONSTR. CODE
80% FED.
20% STATE

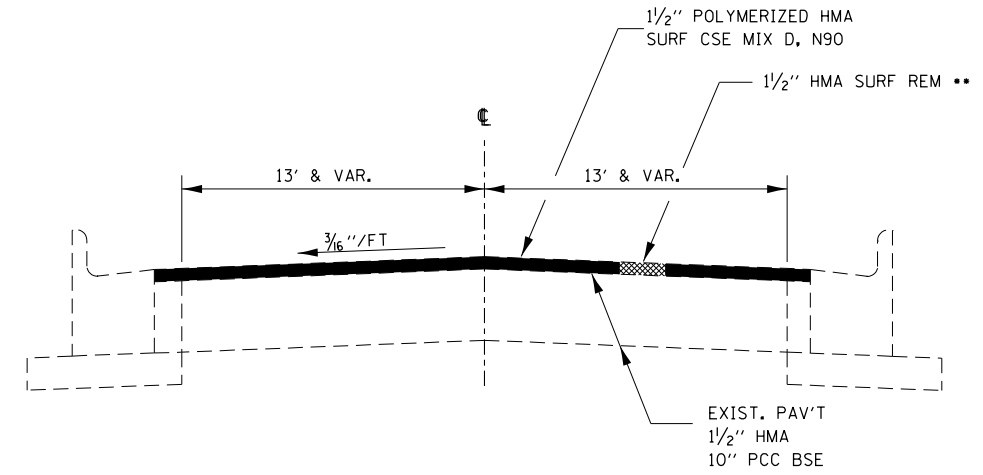
CODE NO.	ITEM	UNIT	TOTAL QUANTITY	CONSTR. CODE
				ROADWAY
				0005
				NONE
Δ 78000500	THERMOPLASTIC PAVEMENT MARKING - LINE 8"	FOOT	255	255
Δ 78000600	THERMOPLASTIC PAVEMENT MARKING - LINE 12"	FOOT	840	840
Δ 78000650	THERMOPLASTIC PAVEMENT MARKING - LINE 24"	FOOT	178	178
Δ 78100100	RAISED REFLECTIVE PAVEMENT MARKER	EACH	85	85
Δ 78200020	CURB REFLECTORS	EACH	32	32
78300100	PAVEMENT MARKING REMOVAL	SQ FT	3753	3753
78300200	RAISED REFLECTIVE PAVEMENT MARKER REMOVAL	EACH	85	85
X4401198	HOT-MIX ASPHALT SURFACE REMOVAL, VARIABLE DEPTH	SQ YD	20642	20642
X5619210	WATER VALVES TO BE ADJUSTED, SPECIAL	EACH	2	2
X6030310	FRAMES AND LIDS TO BE ADJUSTED (SPECIAL)	EACH	7	7
X6060714	CONCRETE MEDIAN (SPECIAL)	SQ FT	205	205
Z0030850	TEMPORARY INFORMATION SIGNING	SQ FT	42	42
Z0034105	MATERIAL TRANSFER DEVICE	TON	3374	3374

Δ SPECIALTY ITEMS

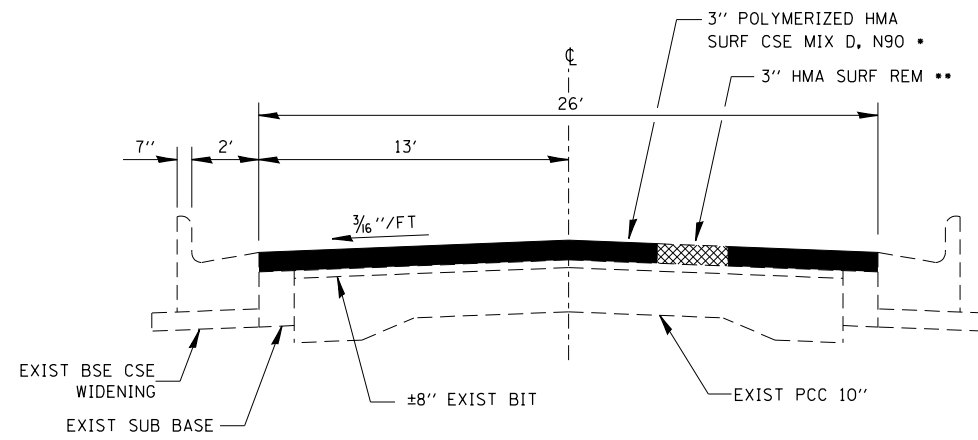
FILE NAME *	USER NAME * JULIANGA	DESIGNED -	REVISED -	STATE OF ILLINOIS DEPARTMENT OF TRANSPORTATION	SUMMARY OF QUANTITIES			F.A.P. RTE.	SECTION	COUNTY	TOTAL SHEETS	SHEET NO.
\\IL084E010\INTEG\illinois.gov\PI\001\Documents\1001 Offices\District 3\Projects\036	DRAWN Data\036F27-shr-800.dgn	CHECKED -	REVISED -					326	120RS-4	LIVINGSTON	31	5
Default	PLOT SCALE * 100.0383' / in.	DATE -	REVISED -		SCALE:	SHEET OF SHEETS	STA. TO STA.	ILLINOIS FED. AID PROJECT				
	PLOT DATE * 3/16/2016											



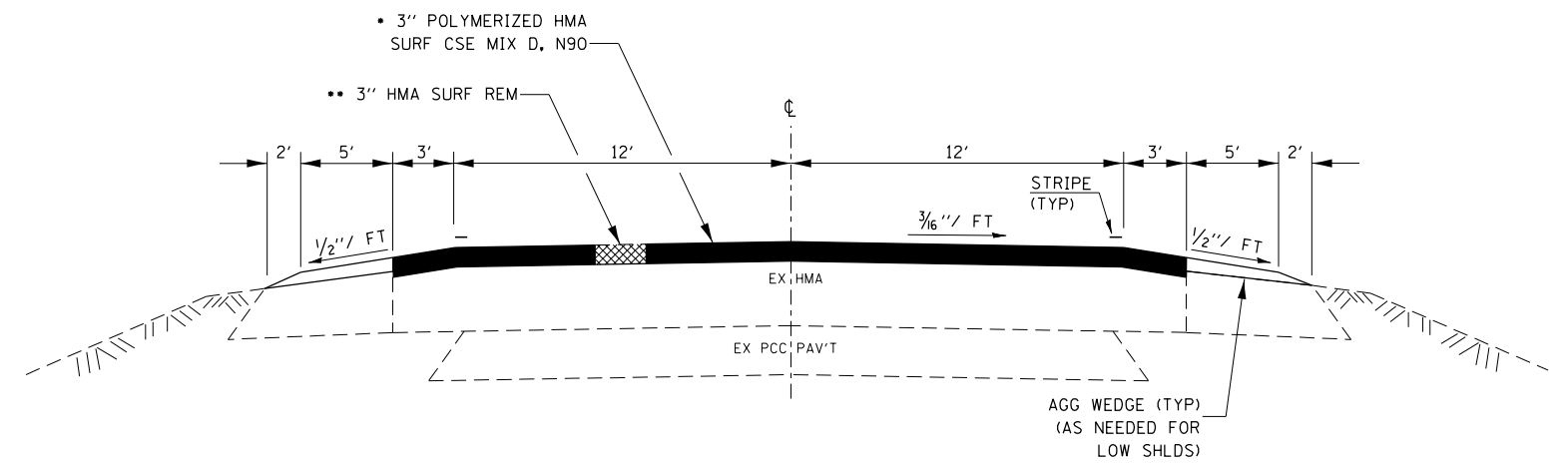
PROPOSED TYPICAL SECTION – IL 47
STA 2+88 TO 60+01.37



PROPOSED TYPICAL SECTION – IL 17
STA. 10+65 TO STA. 14+30



PROPOSED TYPICAL SECTION – IL 47
STA 60+01.37 TO 62+50



PROPOSED TYPICAL SECTION – IL 17
STA. 14+30 TO STA. 16+65

- HMA SURFACE SHALL BE PLACED IN 2 SEPARATE LIFTS OF 1/2" EACH
- PAY FOR AS HMA SURF REM, VAR DEPTH (APPROXIMATE DEPTHS ARE SHOWN)

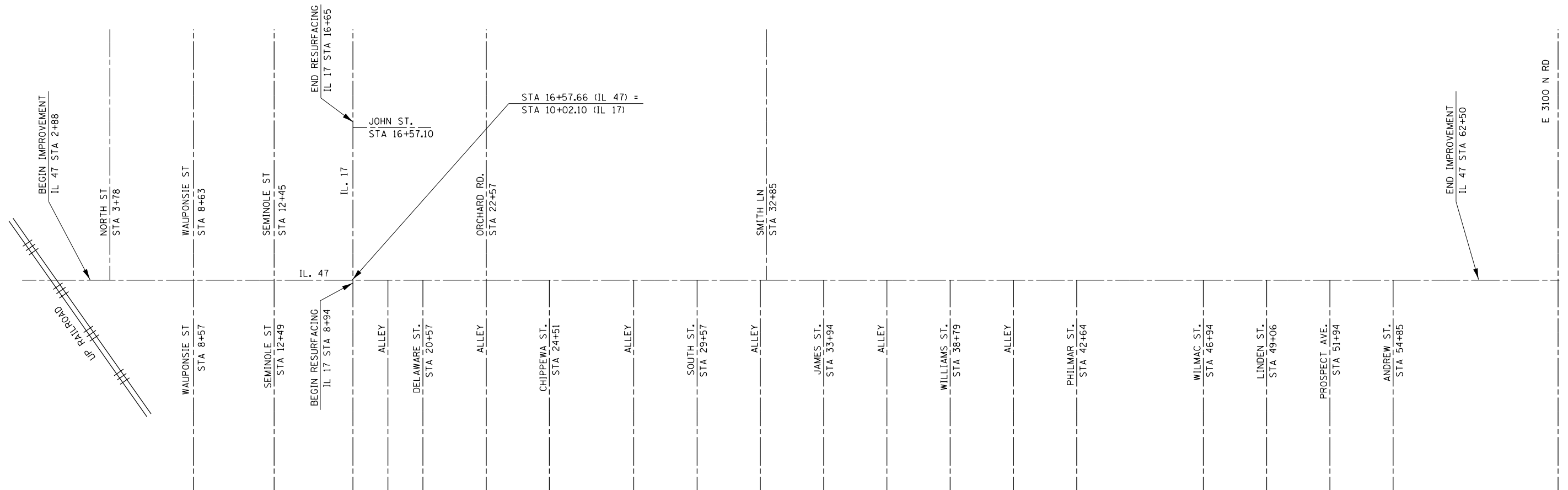
FILE NAME =	USER NAME = JULIANSA	DESIGNED -	REVISED -	STATE OF ILLINOIS DEPARTMENT OF TRANSPORTATION	TYPICAL SECTIONS			F.A.P. RTE.	SECTION	COUNTY	TOTAL SHEETS	SHEET NO.
pw\IL084EBIDINTEG.illinois.gov\PIDOT\Documents\IDOT Offices\District 3\Projects\0366\Drawings\0366F27-sht-details.dgn		CHECKED -	REVISED -					326	12ORS-4	LIVINGSTON	31	6
Default	PLOT SCALE = 100.3238' / in.	DATE -	REVISED -		SCALE: SHEET OF SHEETS STA. TO STA.			CONTRACT NO. 66F27				
	PLOT DATE = 3/16/2016							ILLINOIS FED. AID PROJECT				

MAINLINE SCHEDULE									
LOCATION	LENGTH	PVMT AREA	HMA SURF CSE	HMA SURFACE REMOVAL VAR. DEPTH	TEMP RAMP	BIT MAT (TACK COAT)	MIX FOR CRACKS, JOINTS & FLGWYS	LEVEL BINDER (HM)	AGG SHLDR
STA TO STA	FOOT	SQ YD	TON	SQ YD	SQ YD	LB	TON	TON	TON
IL 47:									
2+88 TO 15+09	1221	3527	593	3527	14	2381	1.1	1.76	
15+09 TO 18+01	292	2331	392	2331	14	1573	0.7	1.17	
18+01 TO 60+01.37	4200.37	12134	2039	12134		8190	3.6	6.07	
60+01.37 TO 62+50	248.63	718	121	718		485	0.2	0.36	
IL 17:									
10+65 TO 11+47	365	331	28	331	14	223	0.1	0.17	
11+47 TO 14+30	283	818	69	818		552	0.2	0.41	
14+30 TO 16+65	235	783	132	783	28	529	0.2	0.39	22.3
AT SIDEROADS:									
					137				
TOTAL	6845	20642	3374	20642	207	13933	6.1	10.33	22.3

NOTE: THERE SHALL BE NO MILLING AND RESURFACING OF SIDEROAD APRONS

UTILITY ADJUSTMENTS			
LOCATION	WATER VALVES TO BE ADJUSTED, SPL	WATER VALVES TO BE ADJUSTED	FRAMES & LIDS TO BE ADJUSTED (SPL)
	EACH	EACH	EACH
THROUGHOUT PROJECT	2	1	7
TOTAL	2	1	7

SIDEWALK SCHEDULE					
LOCATION	SIDEWALK REMOVAL	PCC SIDEWALK 4"	MEDIAN REMOVAL	CONCRETE MEDIAN (SPECIAL)	DETECTABLE WARNINGS
STREET	SQ FT	SQ FT	SQ FT	SQ FT	SQ FT
IL 17 NW QUADRANT	241	241			9
IL 17 NW ISLAND			48	48	
IL 17 NE QUADRANT	105	105			13
IL 17 NE ISLAND			50	50	
IL 17 SW QUADRANT	88	88			10
IL 17 SW ISLAND			66	66	
IL 17 SE QUADRANT	137	137			11
IL 17 SE ISLAND			41	41	24
DELAWARE ST - SW QUAD	131	131			10
DELAWARE ST - SE QUAD	165	165			10
CHIPPEWA ST - SW QUAD	138	144			10
CHIPPEWA ST - SE QUAD	60	60			10
SOUTH ST - NW QUAD	41	41			9.2
SOUTH ST - NE QUAD	105	105			10
JAMES ST - SW QUAD	132	132			10
JAMES ST - SE QUAD	133	133			10
WILLIAMS ST - NW QUAD	102	102			9.6
WILLIAMS ST - NE QUAD	46	46			9.6
TOTALS	1624	1630	205	205	165.4



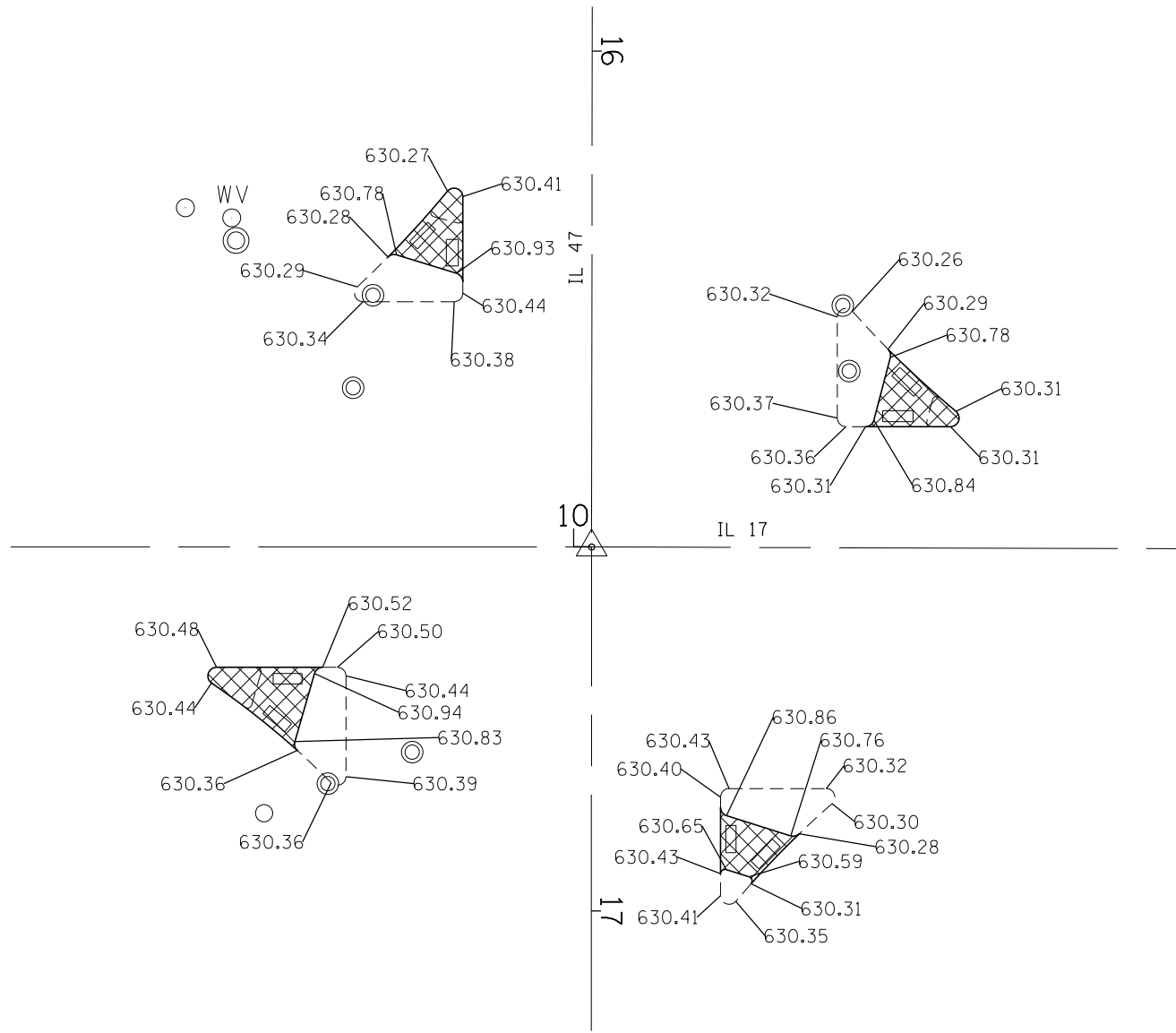
GPS NUMBER	DESCRIPTION	EXISTING MONUMENT TYPE	PROPOSED MONUMENT TYPE	MONUMENT RECORD TO BE RECORDED	RESPONSIBILITY
047011	NW CORNER SECTION 10, T30N, R7E, 3RD PM	BRASS PLAQUE	TYPE 1	NO	1
047012	PI STA AT INTERSECTION OF ILL RTE 47 AND ILL RTE 17 NOTE: THE EXISTING PI BRASS PLAQUE IS NOT CORRECT	BRASS PLAQUE	MAG NAIL	NO	2


LISTED MONUMENT LOCATIONS AND EXISTING TIES HAVE BEEN RECORDED BY GPS. PRE CONSTRUCTION TIES BY THE R.E. ARE NOT REQUIRED. THE R.E. MUST TIE AND BRING TO THE ATTENTION OF THE PLATS AND PLANS MANAGER ANY ADDITIONAL UNLISTED MONUMENTS FOUND. UPON PAVING COMPLETION, THE R.E. WILL DIRECT THE PLATS AND PLANS MANAGER TO STAKE THE LOCATIONS FOR TYPE 1 MONUMENT CORING PLATS AND PLANS WILL PREPARE AND RECORD ANY REQUIRED MONUMENT RECORDS

RESPONSIBILITY:

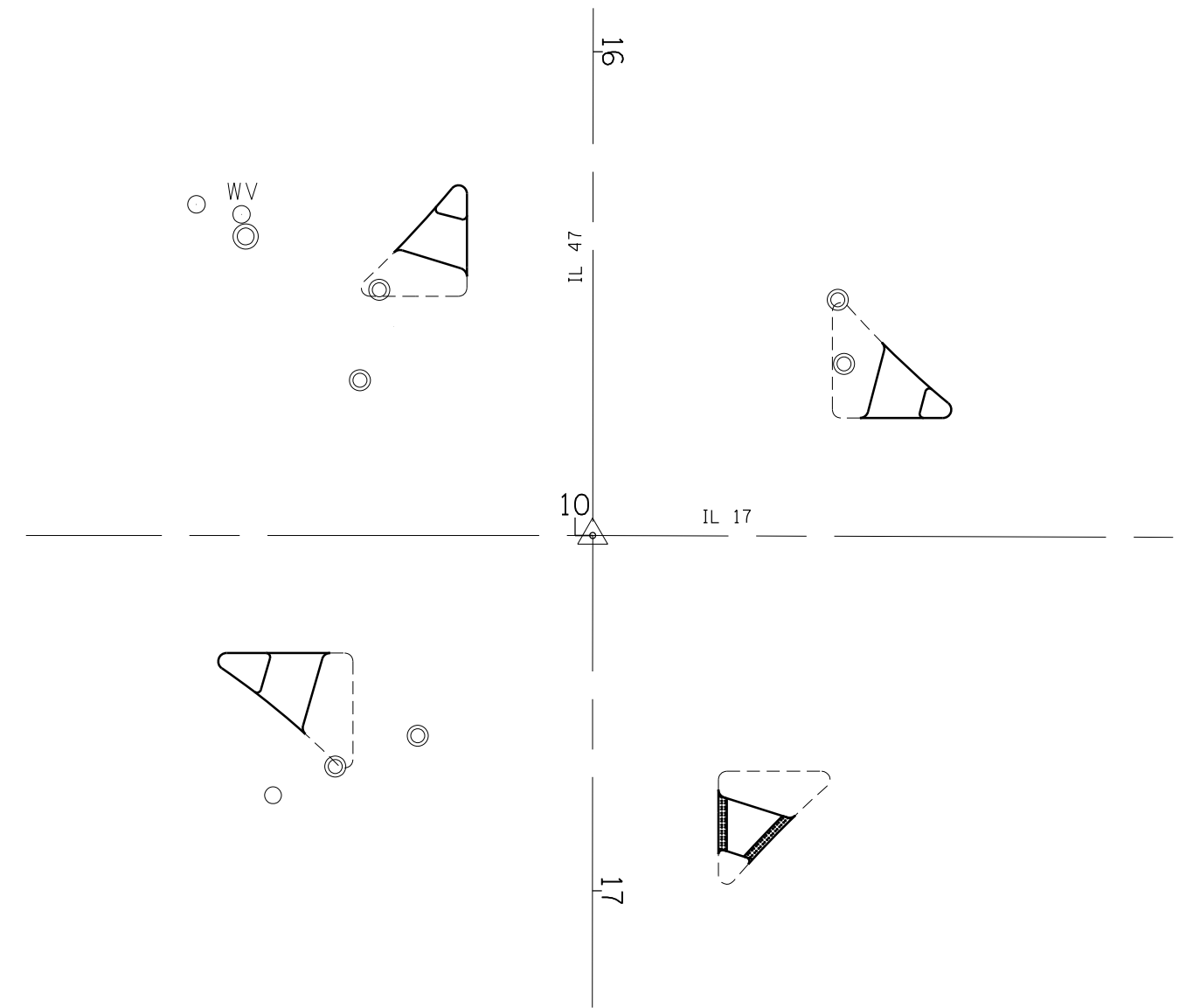
- 1) RESIDENT TO RE-ESTABLISH MONUMENT (PAY ITEM REQUIRED. PERMANENT SURVEY MARKER, TYPE 1)
- 2) PLATS AND PLANS TO RE-ESTABLISH MONUMENT

CONTROL POINTS				
Street	Description	Northing	Easting	Elevation
E. William	Chisled "X" on sidewalk, SE Corner +/- 20' South of Corner	1610351.072	960348.1	632.061
James/Smith	Chisled "X" on sidewalk, East side by mailbox (408)	1610877.98	960334.44	631.653
South	Chisled "X" on sidewalk, NW corner	1611300.518	960265.742	631.963
Orchard/ Delaware	Chisled "X" on sidewalk, East side 40' North of Orchard	1612016.949	960304.397	630.888
Mazon (RT 17)	Chisled "X" on sidewalk, SE Corner	1612469.481	960289.62	630.391
Seminole	Chisled "X" on sidewalk, NW corner	1612991.271	960227.857	628.783
Waupansie	Chisled "X" on sidewalk, NW corner	1613381.247	960218.948	629.623



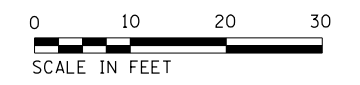

 MEDIAN REMOVAL
 REPLACE WITH CONCRETE
 MEDIAN (SPECIAL)

EXISTING ADA RAMP

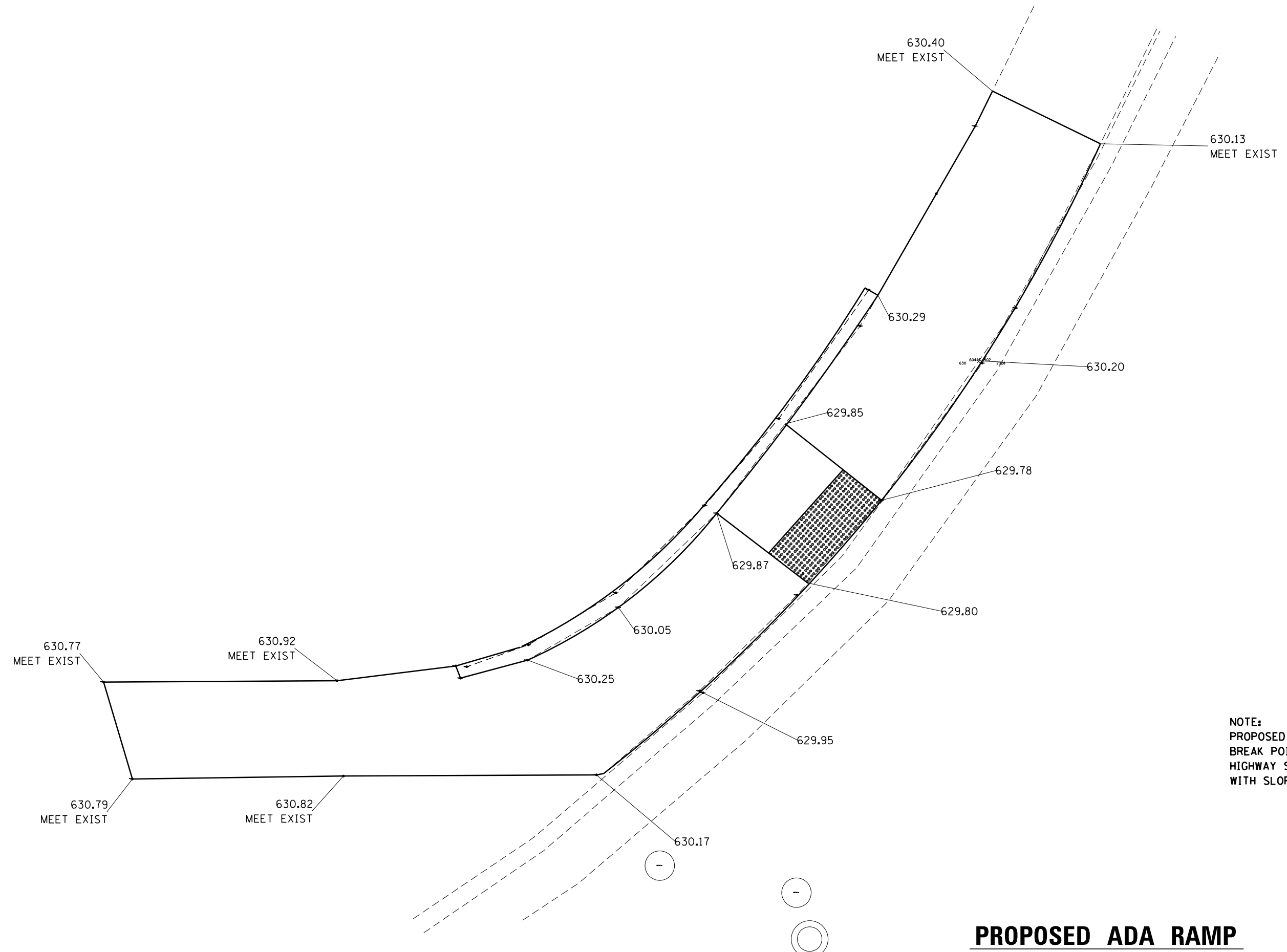


NOTE:
 DO NOT INSTALL DETECTABLE WARNINGS IN ISLANDS
 IF THE GAP BETWEEN WARNINGS WOULD BE LESS
 THAN 2 FEET.


 DETECTABLE WARNING

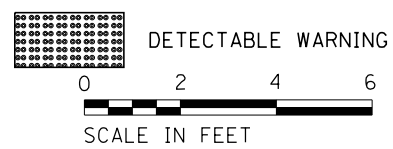


FILE NAME =	USER NAME = corcoranlm	DESIGNED -	REVISED -	STATE OF ILLINOIS DEPARTMENT OF TRANSPORTATION	ADA RAMP DETAILS ISLANDS IL 47 & IL 17				F.A.P. RTE.	SECTION	COUNTY	TOTAL SHEETS	SHEET NO.
pw:\IL\084EBIDINTEG.illinois.gov\PWIDOT\Documents\IDOT Offices\District 3\Projects\03666\Drawings\03666F27-shr-staging.dgn		CHECKED -	REVISED -		326	120RS-4	LIVINGSTON	31	10				
Default	PLOT SCALE = 40.0000' / in.	DATE -	REVISED -		SCALE: SHEET OF SHEETS STA. TO STA.				CONTRACT NO. 66F27				
	PLOT DATE = 3/16/2016				ILLINOIS FED. AID PROJECT								



NOTE:
 PROPOSED ELEVATIONS ARE SHOWN AT
 BREAK POINTS. REFER TO APPLICABLE
 HIGHWAY STANDARDS TO ENSURE COMPLIANCE
 WITH SLOPE AND WIDTH REQUIREMENTS.

NOTE:
 MATCH EXISTING GROUND AT
 BACK OF SIDEWALK CURB



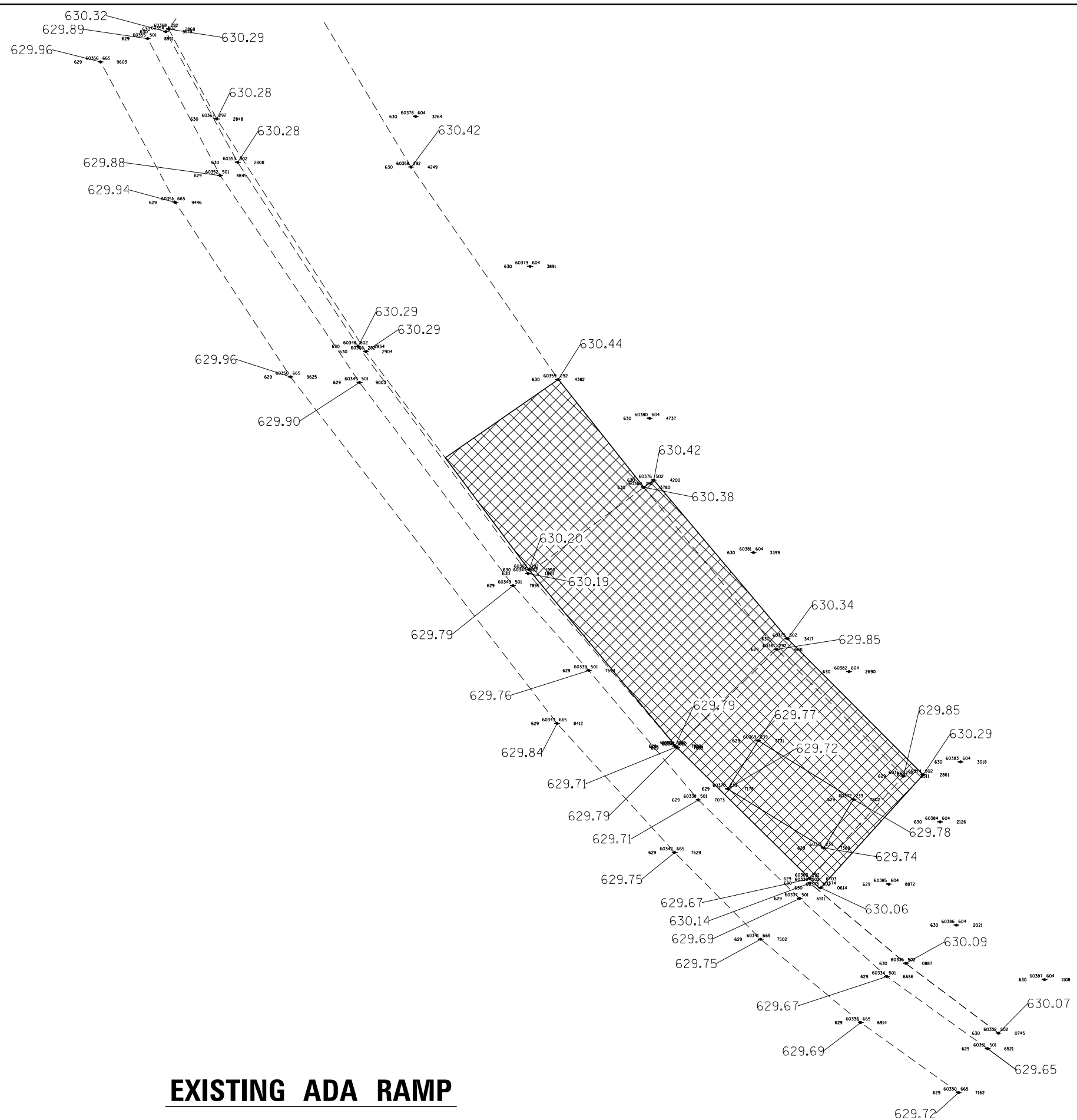
PROPOSED ADA RAMP

FILE NAME =	USER NAME = corcoranim	DESIGNED -	REVISED -
p:\11\084EBIDINTEG\illinois.gov\PWIDOT\Documents\DOT Offices\District 3\Projects\0366F27\Drawings\0366F27-sh1-staging.dgn		REVISED -	REVISED -
Default	PLOT SCALE = 40.0000' / in.	CHECKED -	REVISED -
	PLOT DATE = 3/16/2016	DATE -	REVISED -


**STATE OF ILLINOIS
 DEPARTMENT OF TRANSPORTATION**

ADA RAMP DETAILS			
IL 17 PROPOSED NORTHWEST QUADRANT			
SCALE:	SHEET	OF SHEETS	STA. TO STA.

F.A.P. RTE.	SECTION	COUNTY	TOTAL SHEETS	SHEET NO.
326	120RS-4	LIVINGSTON	31	12
CONTRACT NO. 66F27				
ILLINOIS FED. AID PROJECT				

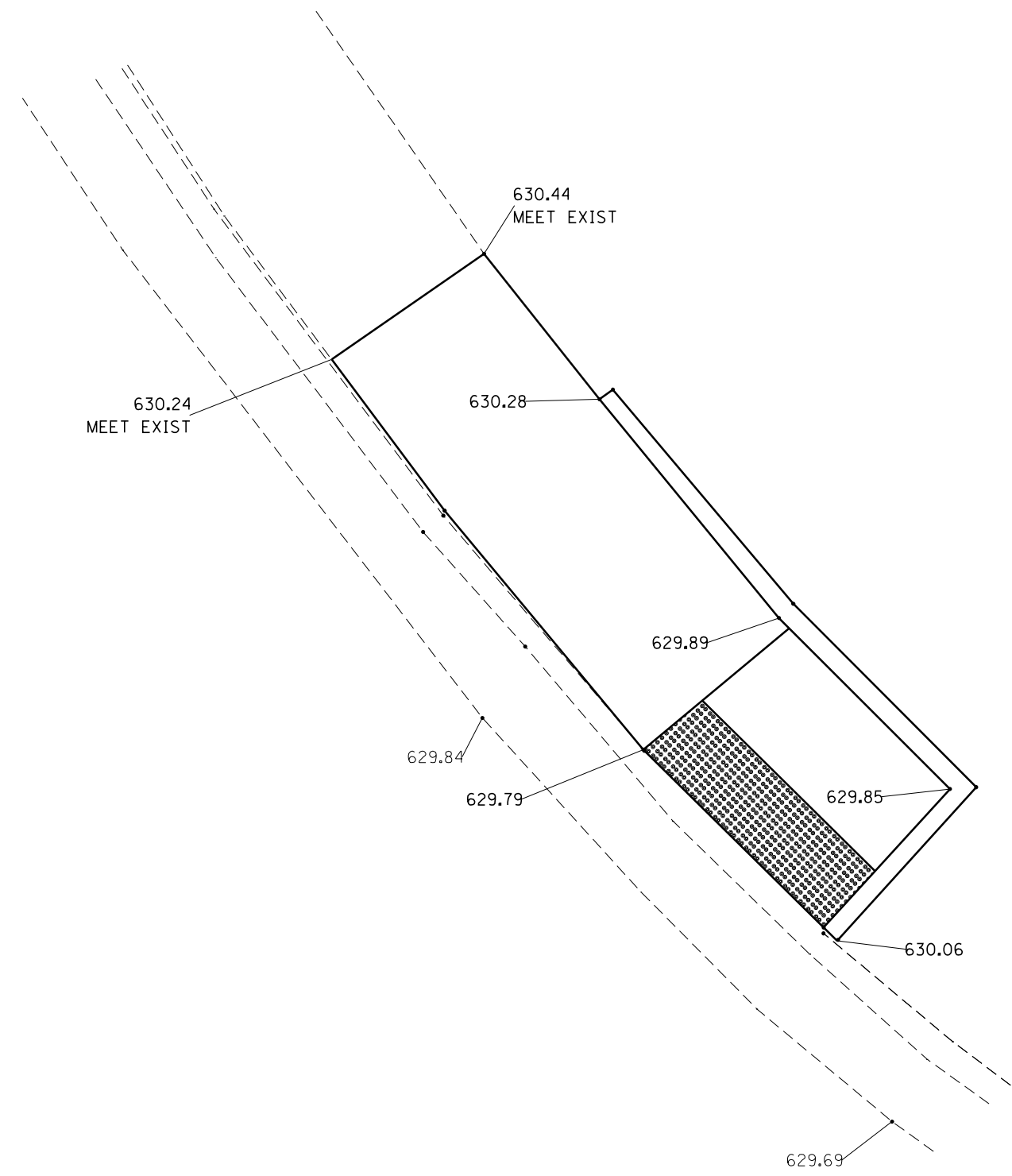


EXISTING ADA RAMP

 PCC SIDEWALK REMOVAL

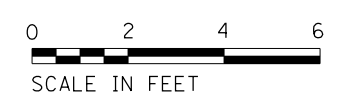


FILE NAME =	USER NAME = corcoranim	DESIGNED -	REVISED -	STATE OF ILLINOIS DEPARTMENT OF TRANSPORTATION	ADA RAMP DETAILS IL 17 EXISTING NORTHEAST QUADRANT				F.A.P. RTE. =	SECTION	COUNTY	TOTAL SHEETS	SHEET NO.
pw:\IL\084EBIDINTEG.illinois.gov\PIWIDOT\Documents\IDOT Offices\District 3\Projects\0366\Drawings\0366F27-shr-staging.dgn		REVISION	REVISED -		326	120RS-4	LIVINGSTON	31	13				
Default	PLOT SCALE = 40.0000' / in.	CHECKED -	REVISED -		CONTRACT NO. 66F27				ILLINOIS FED. AID PROJECT				
	PLOT DATE = 3/16/2016	DATE -	REVISED -		SCALE:	SHEET	OF	SHEETS	STA.	TO	STA.		



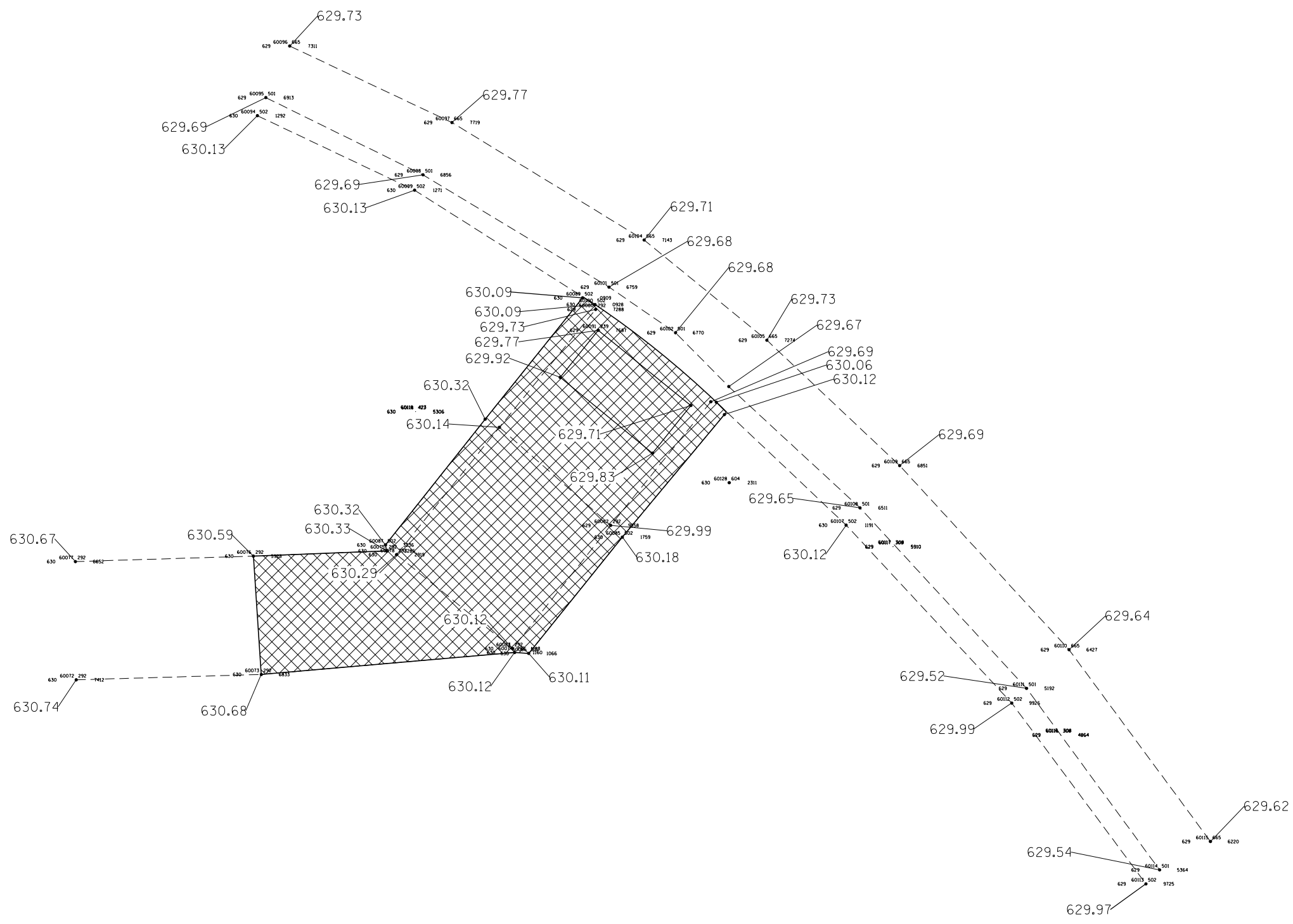
NOTE:
 PROPOSED ELEVATIONS ARE SHOWN AT
 BREAK POINTS. REFER TO APPLICABLE
 HIGHWAY STANDARDS TO ENSURE COMPLIANCE
 WITH SLOPE AND WIDTH REQUIREMENTS.


NOTE:
 MATCH EXISTING GROUND AT
 BACK OF SIDEWALK CURB



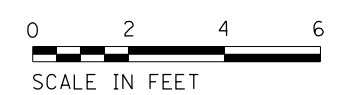
PROPOSED ADA RAMP

FILE NAME =	USER NAME = corcoranlm	DESIGNED -	REVISED -	STATE OF ILLINOIS DEPARTMENT OF TRANSPORTATION	ADA RAMP DETAILS				F.A.P. RTE.	SECTION	COUNTY	TOTAL SHEETS	SHEET NO.
					IL 17 PROPOSED NORTHEAST QUADRANT				326	120RS-4	LIVINGSTON	31	14
					SCALE: SHEET OF SHEETS STA. TO STA.				CONTRACT NO. 66F27				
Default					ILLINOIS FED. AID PROJECT								

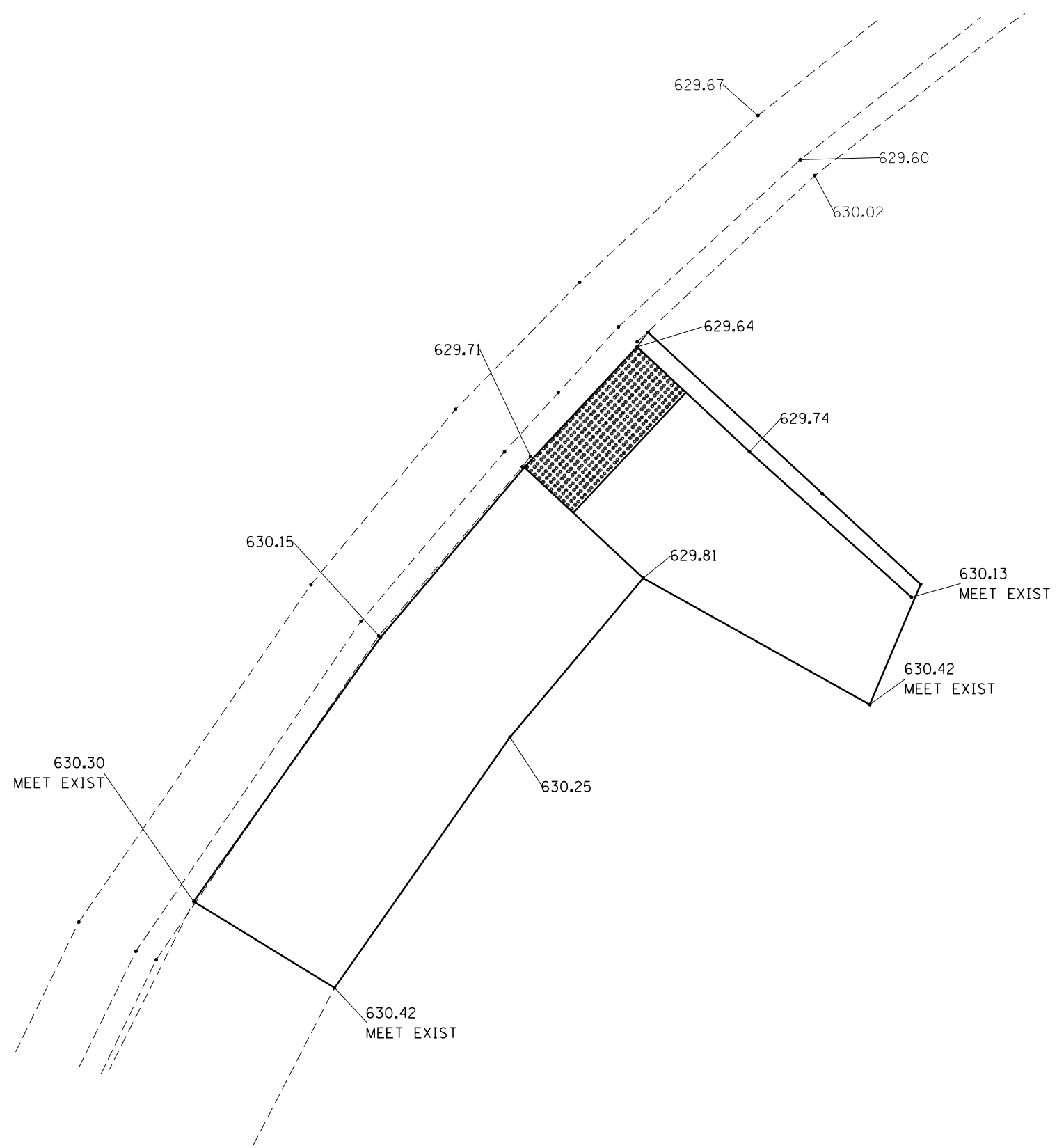


 PCC SIDEWALK REMOVAL

EXISTING ADA RAMP



FILE NAME =	USER NAME = corcoranim	DESIGNED -	REVISED -	STATE OF ILLINOIS DEPARTMENT OF TRANSPORTATION	ADA RAMP DETAILS IL 17 EXISTING SOUTHWEST QUADRANT	F.A.P. RTE.	SECTION	COUNTY	TOTAL SHEETS	SHEET NO.	
						326	120RS-4	LIVINGSTON	31	15	
						CONTRACT NO. 66F27					
						ILLINOIS FED. AID PROJECT					
Default	PLOT DATE = 3/16/2016	CHECKED -	REVISIED -			SCALE:	SHEET	OF	SHEETS	STA. TO STA.	



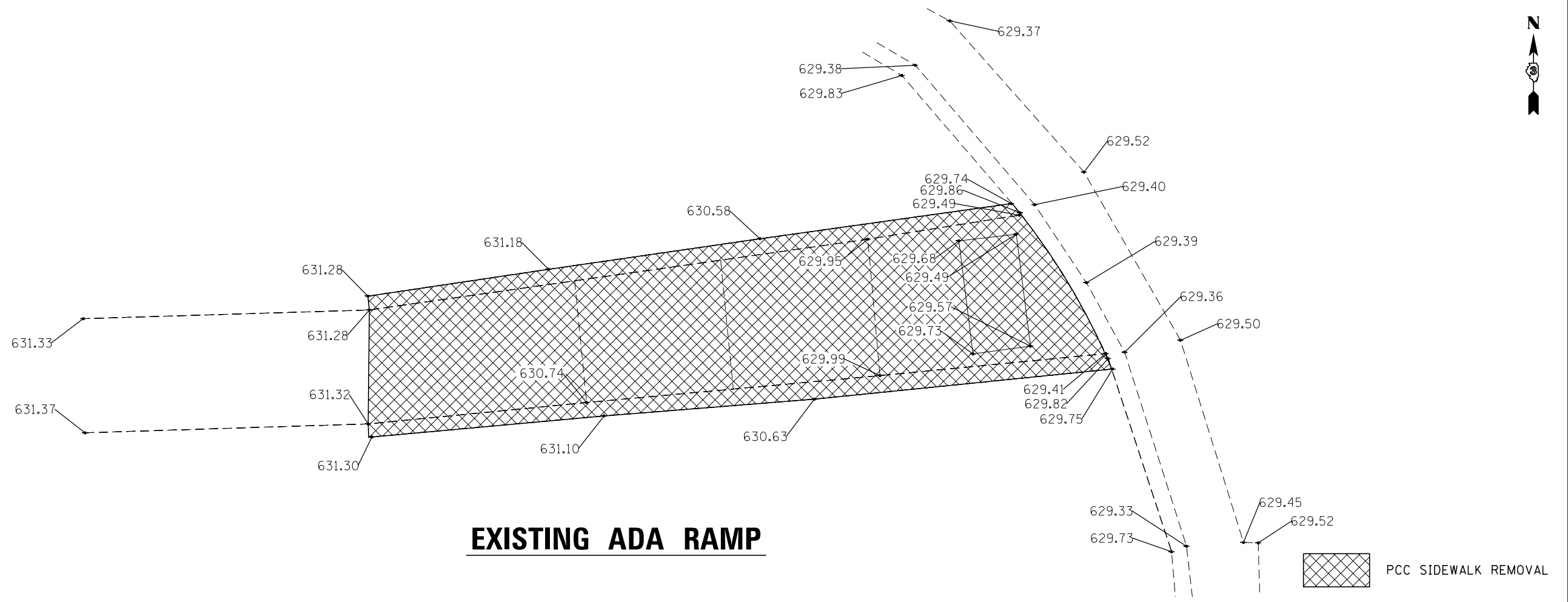
NOTE:
 PROPOSED ELEVATIONS ARE SHOWN AT
 BREAK POINTS. REFER TO APPLICABLE
 HIGHWAY STANDARDS TO ENSURE COMPLIANCE
 WITH SLOPE AND WIDTH REQUIREMENTS.

NOTE:
 MATCH EXISTING GROUND AT
 BACK OF SIDEWALK CURB

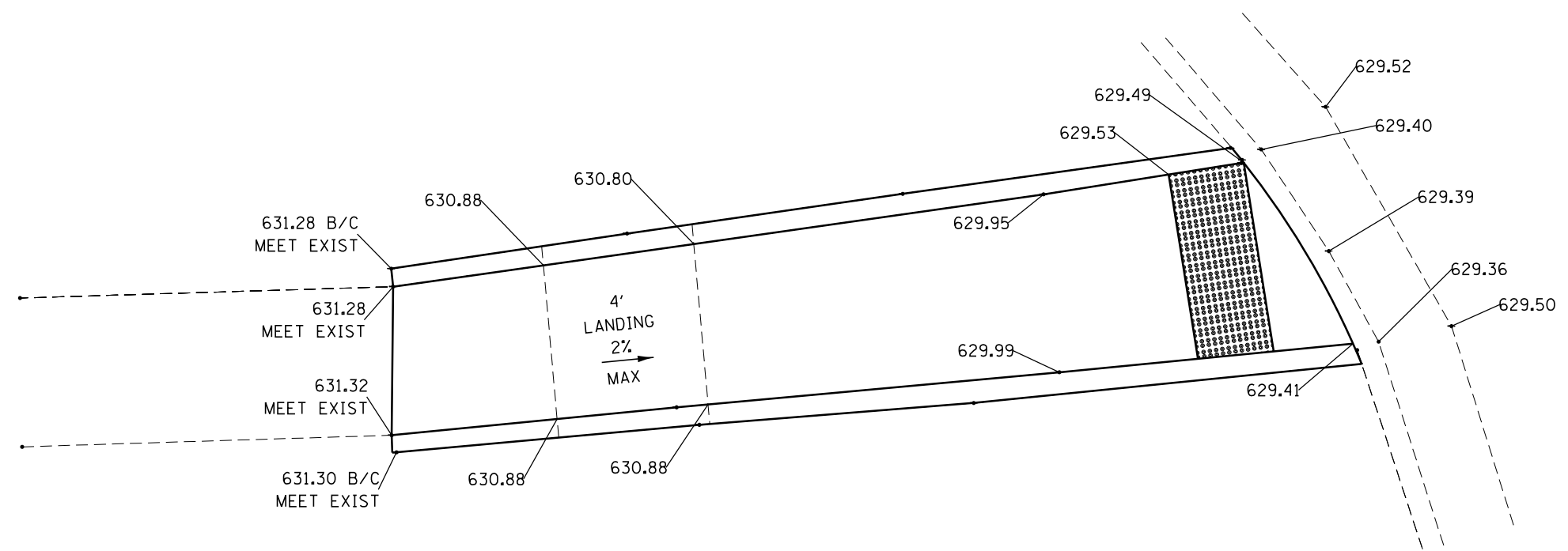


PROPOSED ADA RAMP

FILE NAME =	USER NAME = corcoranlm	DESIGNED -	REVISED -	STATE OF ILLINOIS DEPARTMENT OF TRANSPORTATION	ADA RAMP DETAILS IL 17 PROPOSED SOUTHEAST QUADRANT				F.A.P. RTE.	SECTION	COUNTY	TOTAL SHEETS	SHEET NO.
pw:\IL\084EBIDINTEG.illinois.gov\PIWIDOT\Documents\IDOT Offices\District 3\Projects\03666\DRAWING\03666\03666F27-shr-staging.dgn		CHECKED -	REVISED -		326	120RS-4	LIVINGSTON	31	18				
Default	PLOT SCALE = 40.0000' / in.	DATE -	REVISED -		SCALE: SHEET OF SHEETS STA. TO STA.				ILLINOIS FED. AID PROJECT CONTRACT NO. 66F27				
	PLOT DATE = 3/16/2016												



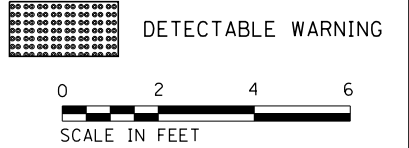
EXISTING ADA RAMP



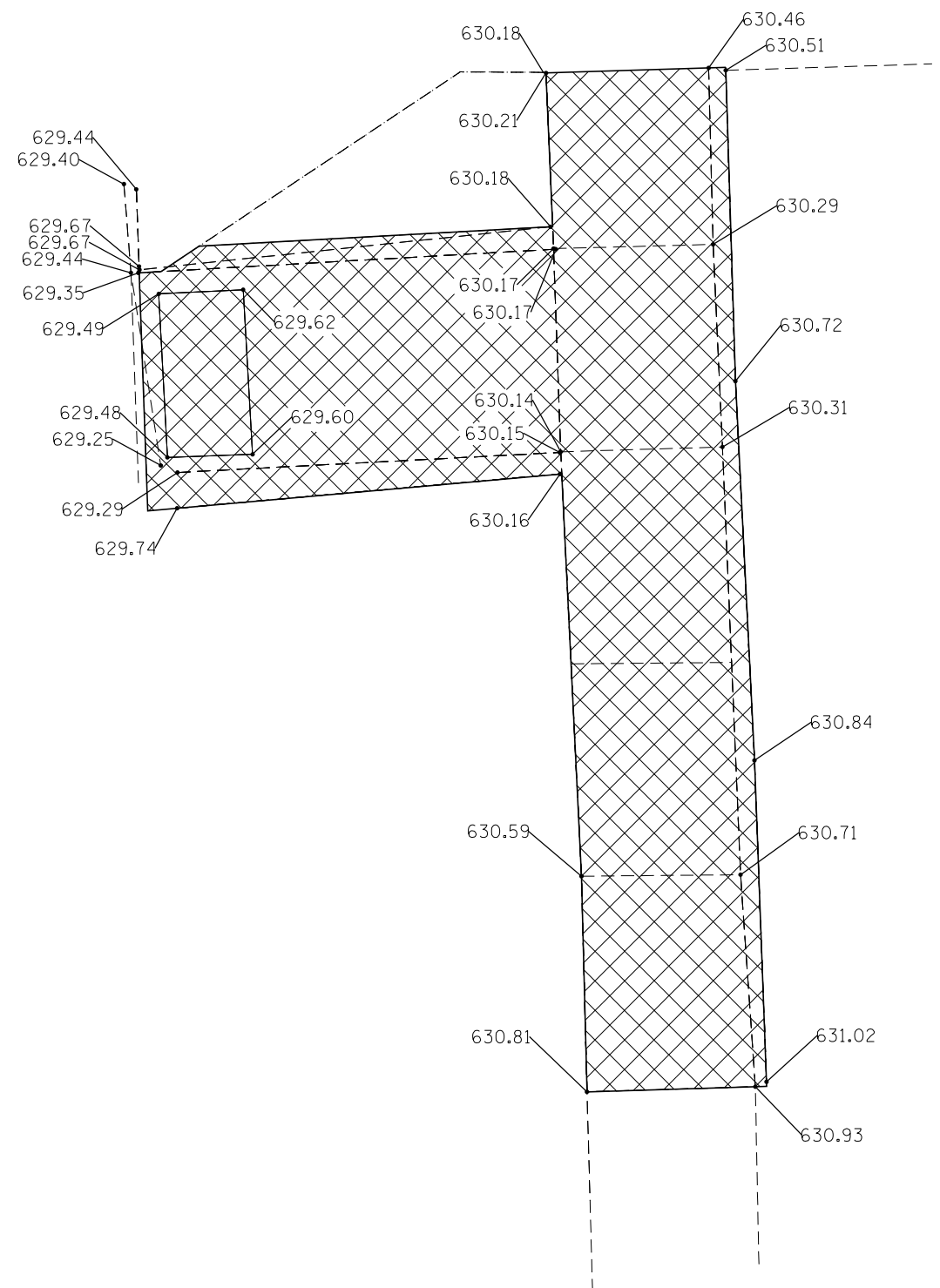
PROPOSED ADA RAMP

NOTE:
PROPOSED ELEVATIONS ARE SHOWN AT BREAK POINTS. REFER TO APPLICABLE HIGHWAY STANDARDS TO ENSURE COMPLIANCE WITH SLOPE AND WIDTH REQUIREMENTS.


NOTE:
MATCH EXISTING GROUND AT BACK OF SIDEWALK CURB

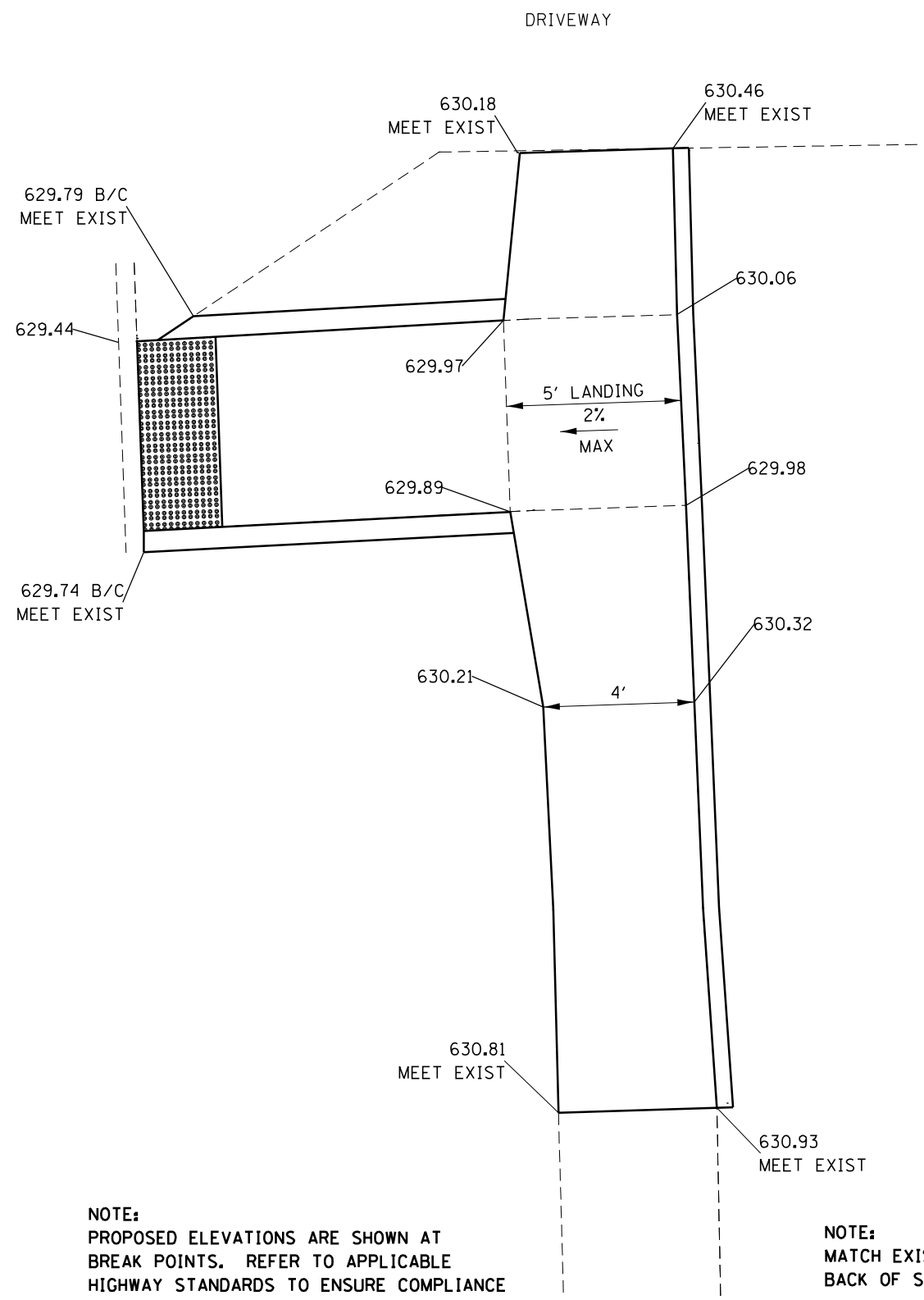


FILE NAME =	USER NAME = corcoranlm	DESIGNED -	REVISED -	STATE OF ILLINOIS DEPARTMENT OF TRANSPORTATION	ADA RAMP DETAILS DELAWARE ST SOUTHWEST SIDE				F.A.P. RTE.	SECTION	COUNTY	TOTAL SHEETS	SHEET NO.
pw:\IL\084EBIDINTEG.illinois.gov\PWIDOT\Documents\DOT Offices\District 3\Projects\03666\Drawings\03666F27-shr-staging.dgn		CHECKED -	REVISED -		326	120RS-4	LIVINGSTON	31	19				
Default	PLOT SCALE = 40.0000' / in.	DATE -	REVISED -		SCALE: SHEET OF SHEETS STA. TO STA.				CONTRACT NO. 66F27				
	PLOT DATE = 3/16/2016								ILLINOIS FED. AID PROJECT				



EXISTING ADA RAMP

 PCC SIDEWALK REMOVAL



PROPOSED ADA RAMP

NOTE:
PROPOSED ELEVATIONS ARE SHOWN AT BREAK POINTS. REFER TO APPLICABLE HIGHWAY STANDARDS TO ENSURE COMPLIANCE WITH SLOPE AND WIDTH REQUIREMENTS.

NOTE:
MATCH EXISTING GROUND AT BACK OF SIDEWALK CURB

 DETECTABLE WARNING



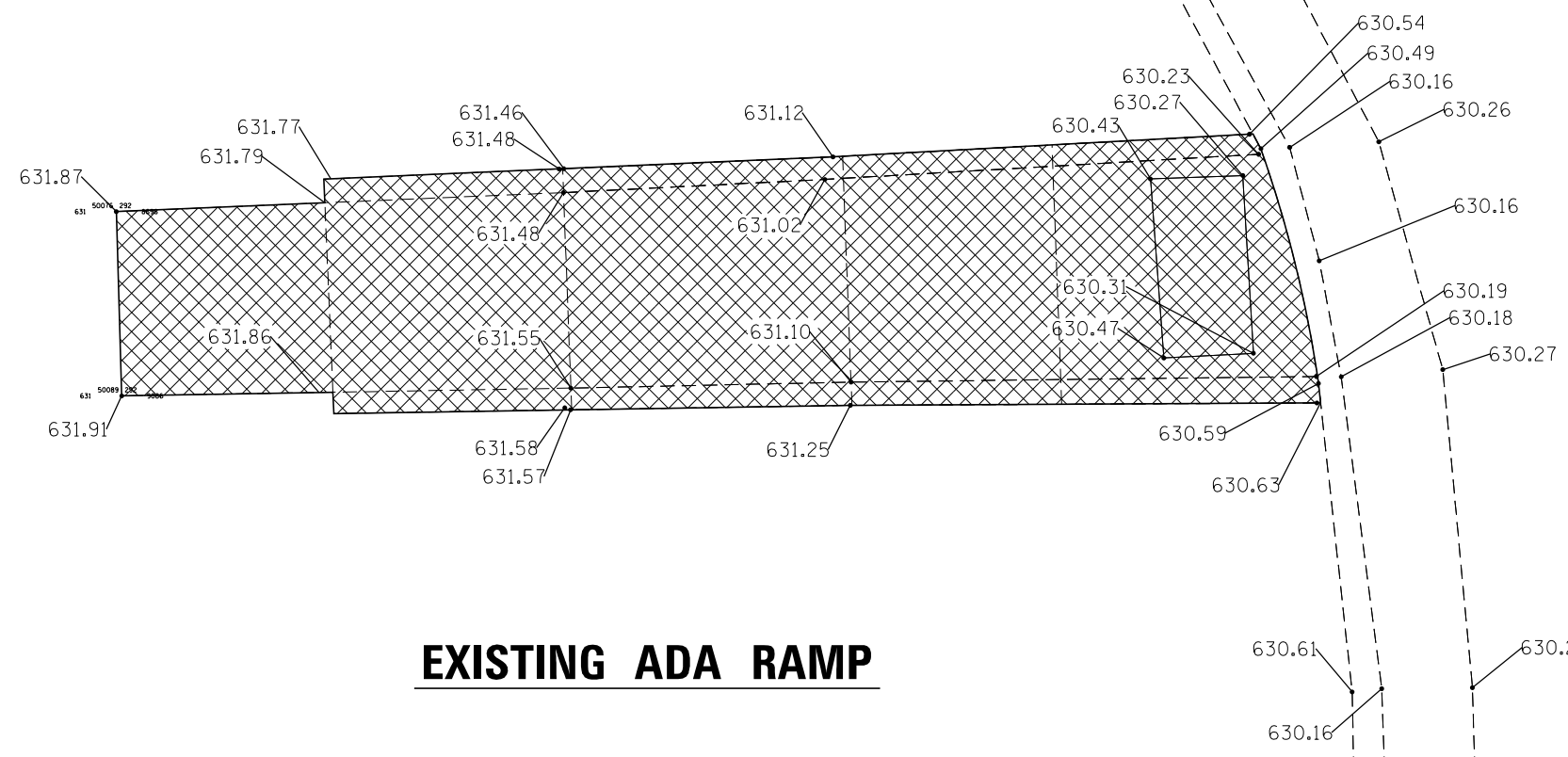
FILE NAME =	USER NAME = corcoranlm	DESIGNED -	REVISED -
p:\11\084EBIDINTEG.illinois.gov\PIWIDOT\Documents\DOT Offices\District 3\Projects\0366\DRAWING\0366F27-shit-staging.dgn			
Default	PLOT SCALE = 40.0000' / in.	CHECKED -	REVISED -
	PLOT DATE = 3/16/2016	DATE -	REVISED -

**STATE OF ILLINOIS
DEPARTMENT OF TRANSPORTATION**

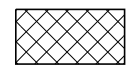
**ADA RAMP DETAILS
DELAWARE ST SOUTHEAST QUADRANT**

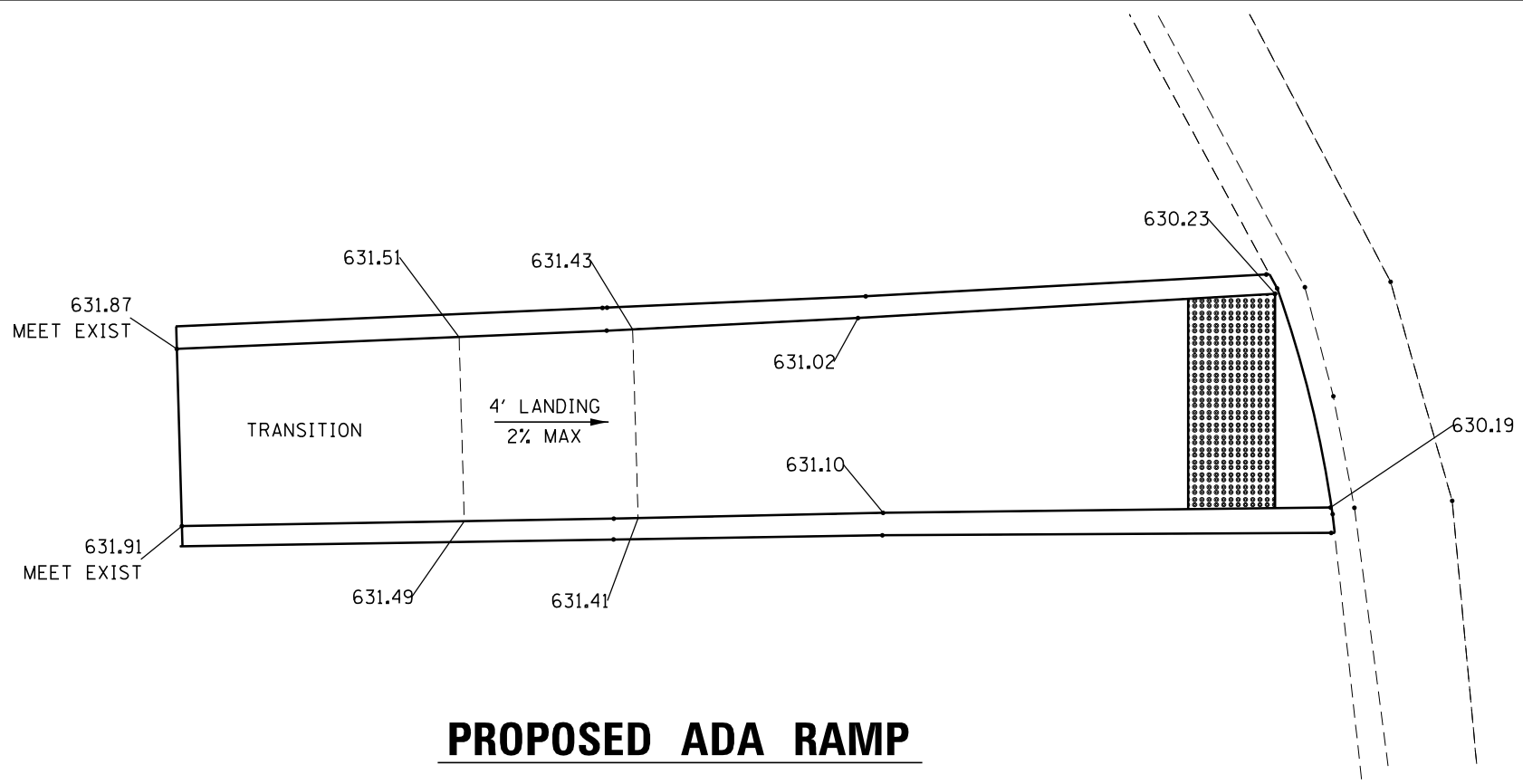
SCALE:	SHEET	OF	SHEETS	STA.	TO	STA.
--------	-------	----	--------	------	----	------

F.A.P. RTE.	SECTION	COUNTY	TOTAL SHEETS	SHEET NO.
326	120RS-4	LIVINGSTON	31	20
CONTRACT NO. 66F27				
ILLINOIS FED. AID PROJECT				



EXISTING ADA RAMP

 PCC SIDEWALK REMOVAL



PROPOSED ADA RAMP

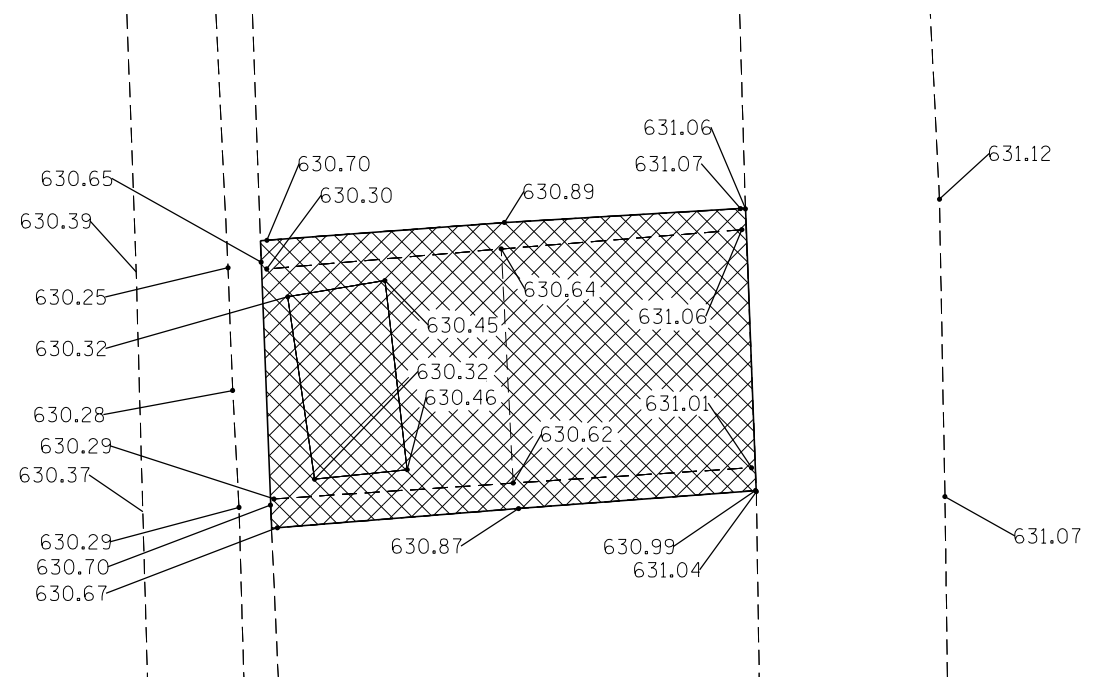
NOTE:
PROPOSED ELEVATIONS ARE SHOWN AT BREAK POINTS. REFER TO APPLICABLE HIGHWAY STANDARDS TO ENSURE COMPLIANCE WITH SLOPE AND WIDTH REQUIREMENTS.

NOTE:
MATCH EXISTING GROUND AT BACK OF SIDEWALK CURB


 DETECTABLE WARNING

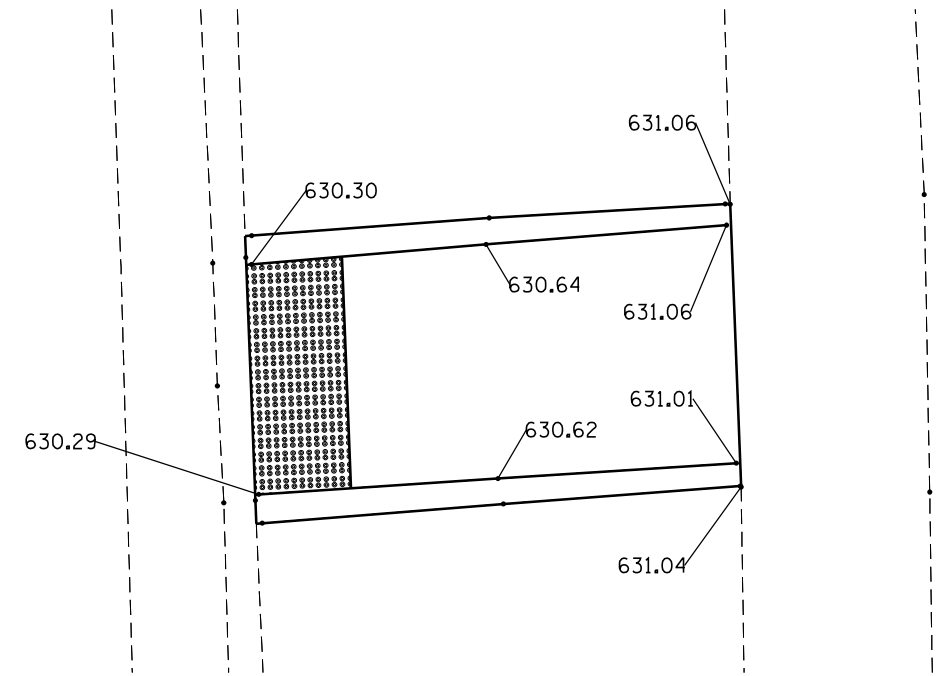


FILE NAME =	USER NAME = corcoranlm	DESIGNED -	REVISED -	STATE OF ILLINOIS DEPARTMENT OF TRANSPORTATION	ADA RAMP DETAILS CHIPPEWA ST SOUTHWEST QUADRANT				F.A.P. RTE.	SECTION	COUNTY	TOTAL SHEETS	SHEET NO.
p:\11\084EBIDINTEG.illinois.gov\PIWIDOT\Documents\DOT Offices\District 3\Projects\0366\DRAWING\0366\F27-shr-staging.dgn		CHECKED -	REVISED -		326	120RS-4	LIVINGSTON	31	21				
Default	PLOT SCALE = 40.0000' / in.	DATE -	REVISED -		SCALE: SHEET OF SHEETS STA. TO STA.				CONTRACT NO. 66F27				
	PLOT DATE = 3/16/2016								ILLINOIS FED. AID PROJECT				



EXISTING ADA RAMP

 PCC SIDEWALK REMOVAL



NOTE:
 PROPOSED ELEVATIONS ARE SHOWN AT
 BREAK POINTS. REFER TO APPLICABLE
 HIGHWAY STANDARDS TO ENSURE COMPLIANCE
 WITH SLOPE AND WIDTH REQUIREMENTS.

NOTE:
 MATCH EXISTING GROUND AT
 BACK OF SIDEWALK CURB

PROPOSED ADA RAMP

 DETECTABLE WARNING

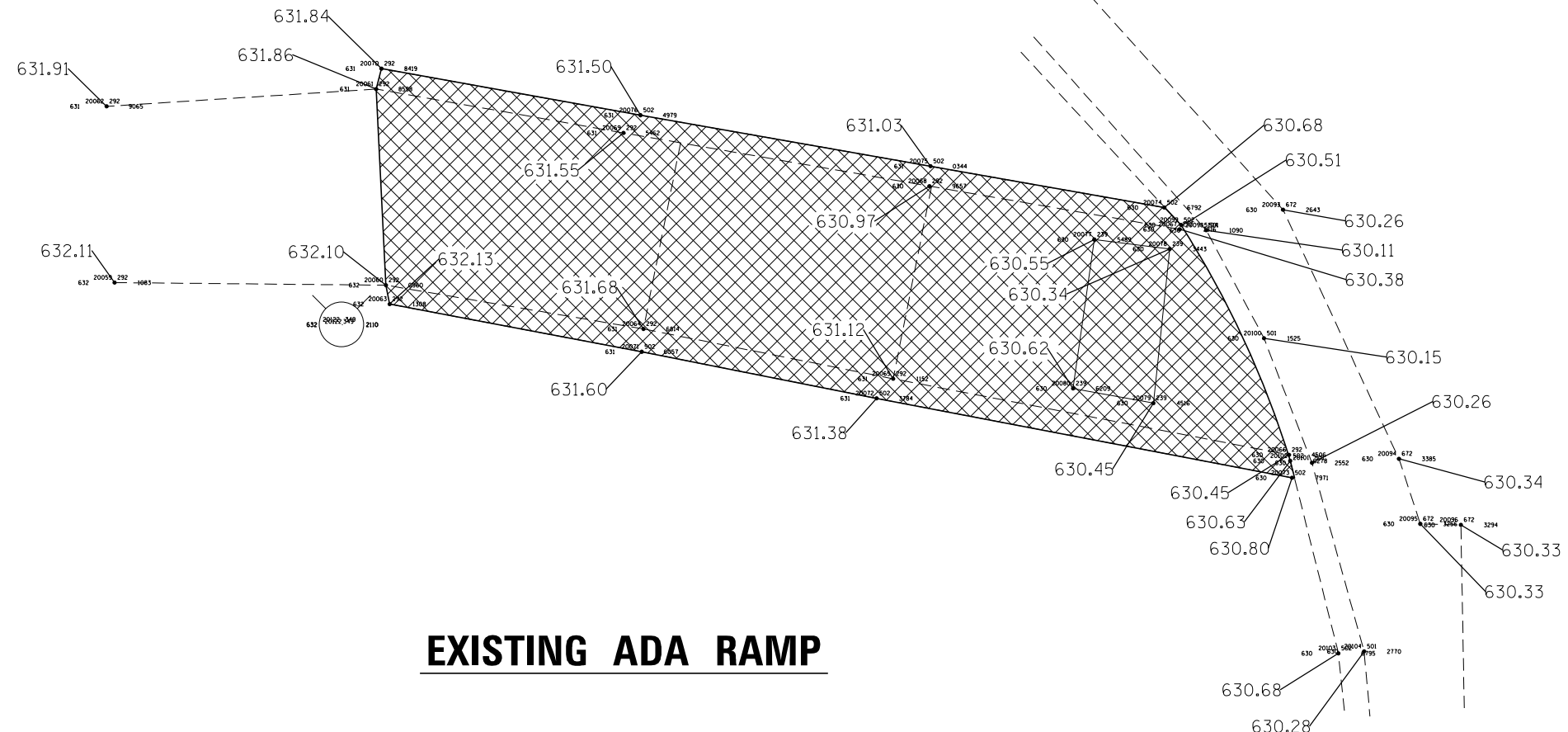


FILE NAME =	USER NAME = corcoranlm	DESIGNED -	REVISED -
p:\11\084EBIDINTEG.illinois.gov\PWIDOT\Documents\DOT Offices\District 3\Projects\03666\DRAWING\03666\03666F27-shr-staging.dgn		CHECKED -	REVISED -
Default	PLOT DATE = 3/16/2016	DATE -	REVISED -

**STATE OF ILLINOIS
 DEPARTMENT OF TRANSPORTATION**

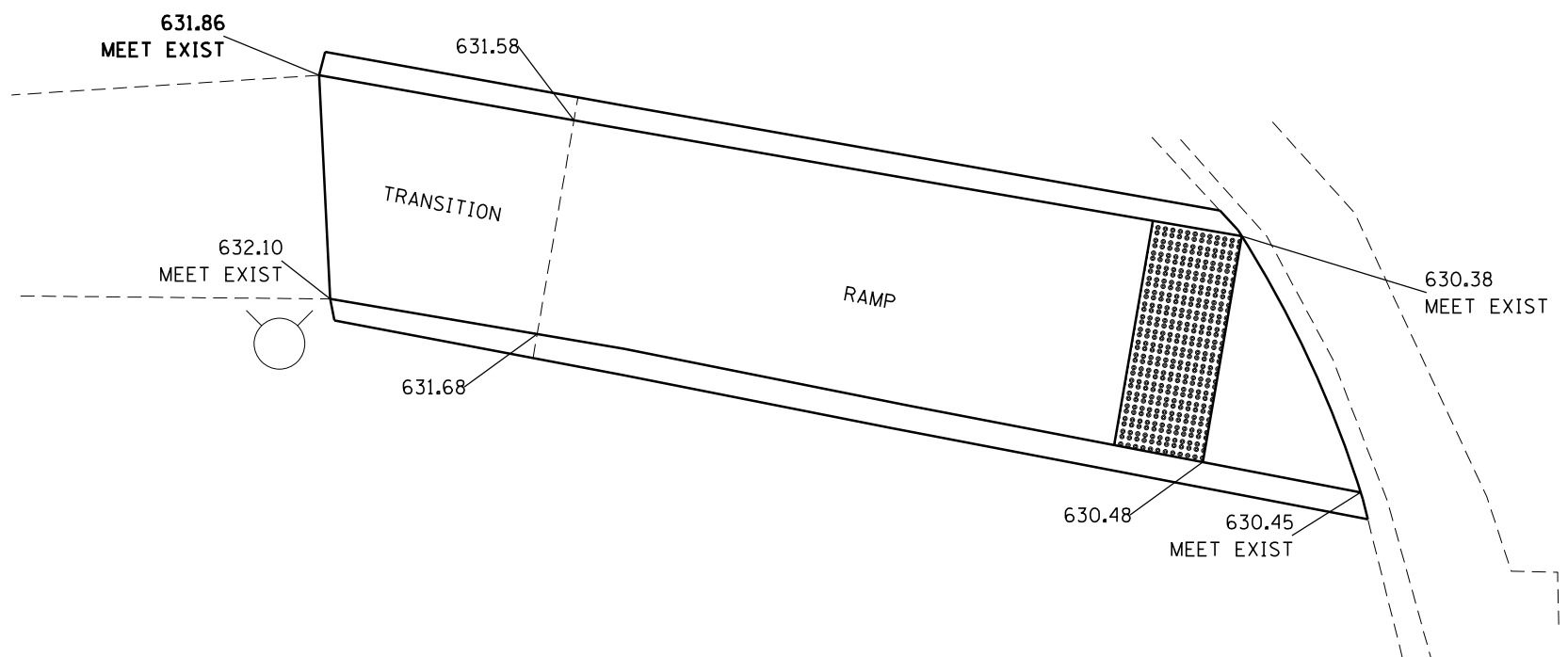
ADA RAMP DETAILS			
CHIPPEWA ST SOUTHEAST QUADRANT			
SCALE:	SHEET	OF SHEETS	STA. TO STA.

F.A.P. RTE.	SECTION	COUNTY	TOTAL SHEETS	SHEET NO.
326	120RS-4	LIVINGSTON	31	22
CONTRACT NO. 66F27				
ILLINOIS FED. AID PROJECT				



EXISTING ADA RAMP

PCC SIDEWALK REMOVAL



PROPOSED ADA RAMP

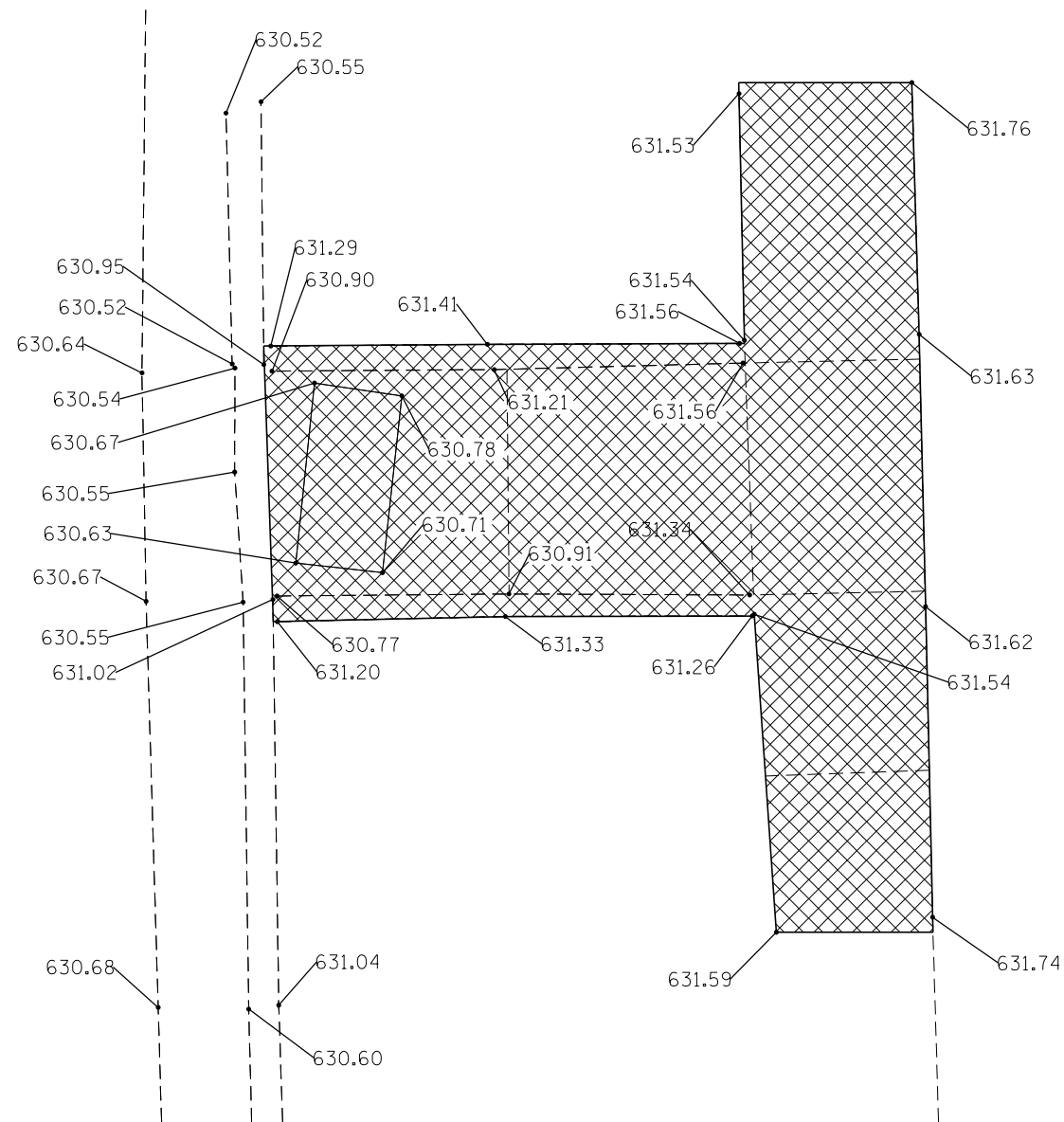
NOTE:
PROPOSED ELEVATIONS ARE SHOWN AT BREAK POINTS. REFER TO APPLICABLE HIGHWAY STANDARDS TO ENSURE COMPLIANCE WITH SLOPE AND WIDTH REQUIREMENTS.

NOTE:
MATCH EXISTING GROUND AT BACK OF SIDEWALK CURB

DETECTABLE WARNING

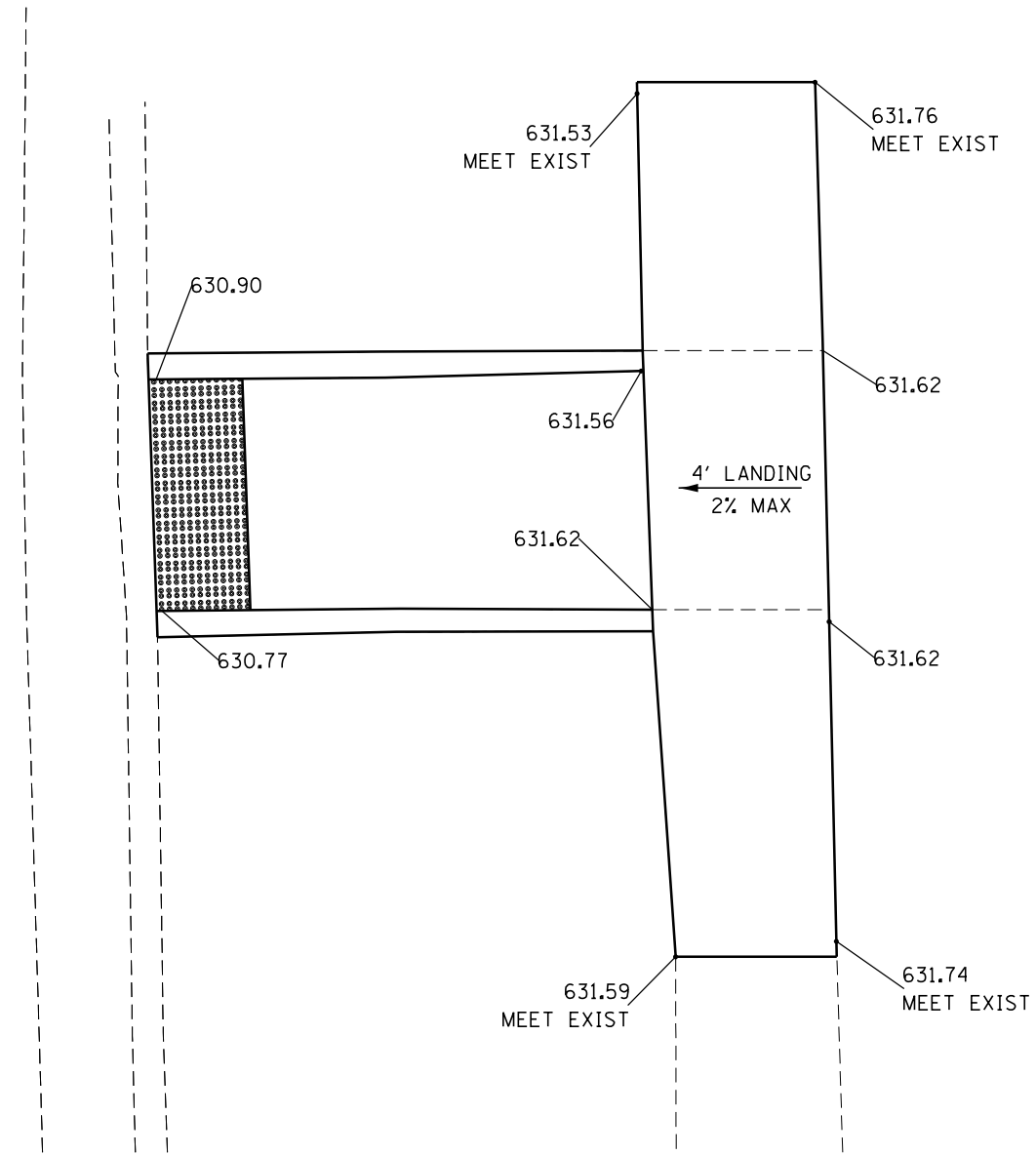


FILE NAME =	USER NAME = corcoranlm	DESIGNED -	REVISED -	STATE OF ILLINOIS DEPARTMENT OF TRANSPORTATION	ADA RAMP DETAILS JAMES ST SOUTHWEST QUADRANT				F.A.P. RTE.	SECTION	COUNTY	TOTAL SHEETS	SHEET NO.
pw:\IL\084EBIDINTEG\Illinois.gov\PWIDOT\Documents\IDOT Offices\District 3\Projects\0366\DRAWING\0366F27-shr-staging.dgn		CHECKED -	REVISED -		326	120RS-4	LIVINGSTON	31	25				
Default	PLOT SCALE = 40.0000' / in.	DATE -	REVISED -		SCALE: SHEET OF SHEETS STA. TO STA.				CONTRACT NO. 66F27				
	PLOT DATE = 3/16/2016								ILLINOIS FED. AID PROJECT				



EXISTING ADA RAMP

 PCC SIDEWALK REMOVAL



PROPOSED ADA RAMP

 DETECTABLE WARNING



NOTE:
PROPOSED ELEVATIONS ARE SHOWN AT
BREAK POINTS. REFER TO APPLICABLE
HIGHWAY STANDARDS TO ENSURE COMPLIANCE
WITH SLOPE AND WIDTH REQUIREMENTS.

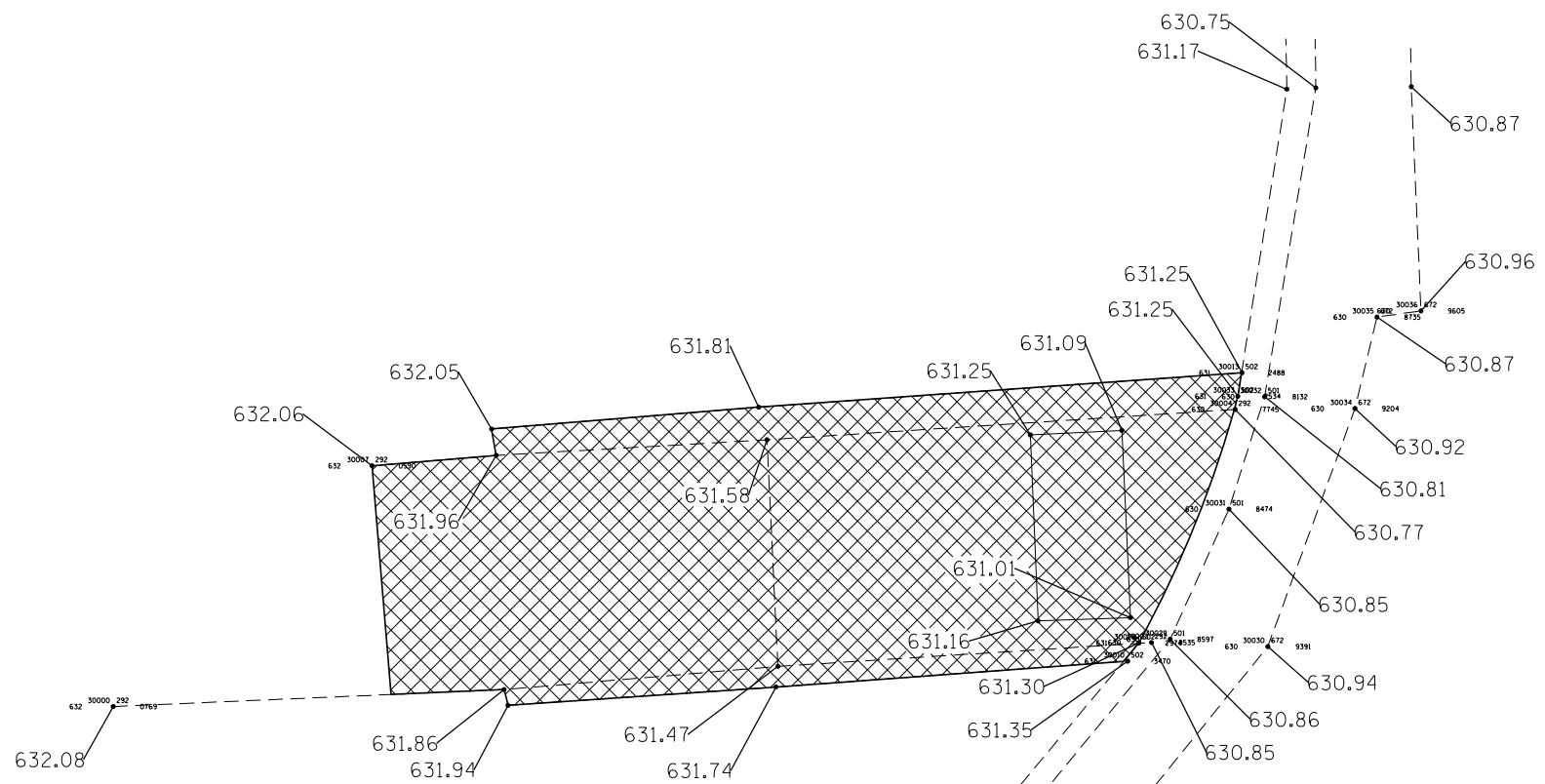
NOTE:
MATCH EXISTING GROUND AT
BACK OF SIDEWALK CURB

FILE NAME =	USER NAME = corcoranlm	DESIGNED -	REVISED -
p:\IL\084EBID\INTEG\illinois.gov\PWIDOT\Documents\IDOT Offices\District 3\Projects\0366\DRAWING\0366F27-shr-staging.dgn		REVISED -	REVISED -
Default	PLOT SCALE = 40.0000' / in.	CHECKED -	REVISED -
	PLOT DATE = 3/16/2016	DATE -	REVISED -


**STATE OF ILLINOIS
DEPARTMENT OF TRANSPORTATION**

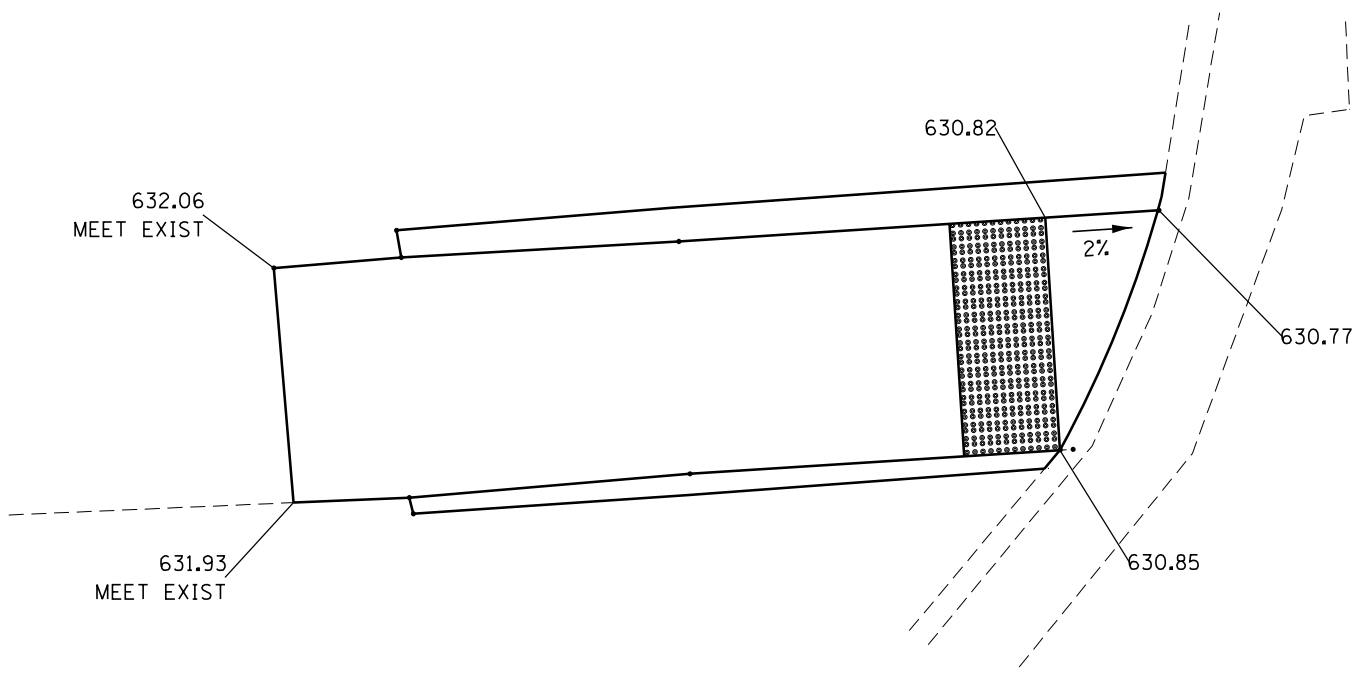
ADA RAMP DETAILS			
JAMES ST SOUTHEAST QUADRANT			
SCALE:	SHEET	OF SHEETS	STA. TO STA.

F.A.P. RTE.	SECTION	COUNTY	TOTAL SHEETS	SHEET NO.
326	120RS-4	LIVINGSTON	31	26
CONTRACT NO. 66F27				
ILLINOIS FED. AID PROJECT				



EXISTING ADA RAMP

 PCC SIDEWALK REMOVAL



PROPOSED ADA RAMP

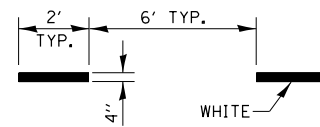
NOTE:
PROPOSED ELEVATIONS ARE SHOWN AT
BREAK POINTS. REFER TO APPLICABLE
HIGHWAY STANDARDS TO ENSURE COMPLIANCE
WITH SLOPE AND WIDTH REQUIREMENTS.

NOTE:
MATCH EXISTING GROUND AT
BACK OF SIDEWALK CURB

 DETECTABLE WARNING

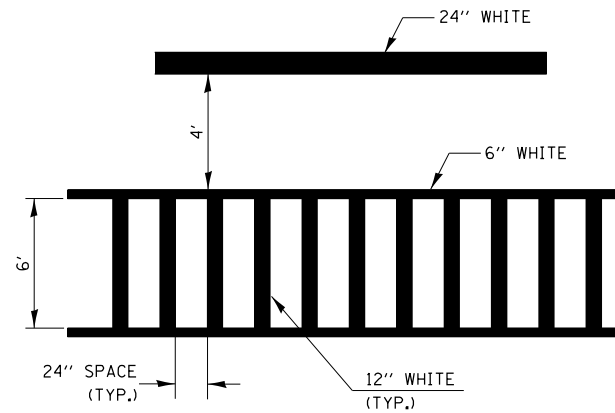


FILE NAME =	USER NAME = corcoranlm	DESIGNED -	REVISED -	STATE OF ILLINOIS DEPARTMENT OF TRANSPORTATION	ADA RAMP DETAILS WILLIAMS ST NORTHWEST QUADRANT				F.A.P. RTE.	SECTION	COUNTY	TOTAL SHEETS	SHEET NO.
p:\work\11084EBIDINTEG.illinois.gov\PI\DOT\Documents\DOT Offices\District 3\Projects\0366\DRAWING\0366F27-shr-staging.dgn		CHECKED -	REVISED -		326	120RS-4	LIVINGSTON	31	27				
Default	PLOT SCALE = 40.0000' / in.	DATE -	REVISED -		SCALE: SHEET OF SHEETS STA. TO STA.				CONTRACT NO. 66F27				
	PLOT DATE = 3/16/2016				ILLINOIS FED. AID PROJECT								

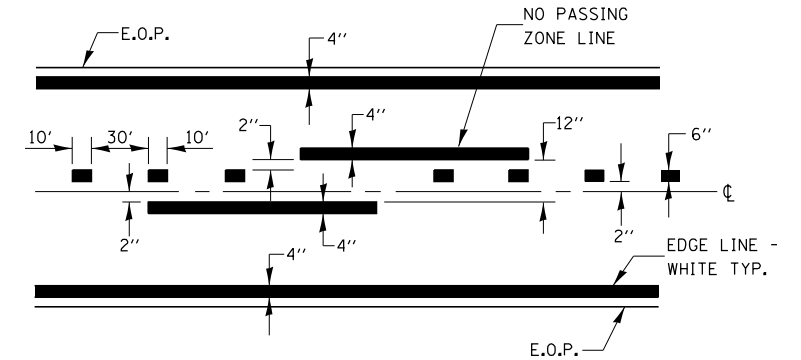


DOTTED LINES

CURVE NORTH OF RAILROAD TRACKS

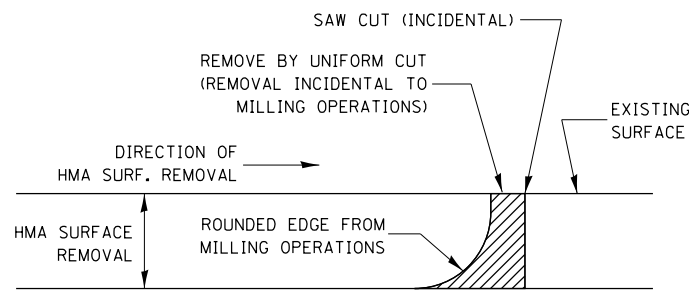


TYPICAL SPACING DETAIL FOR CROSSWALKS AND STOP BARS



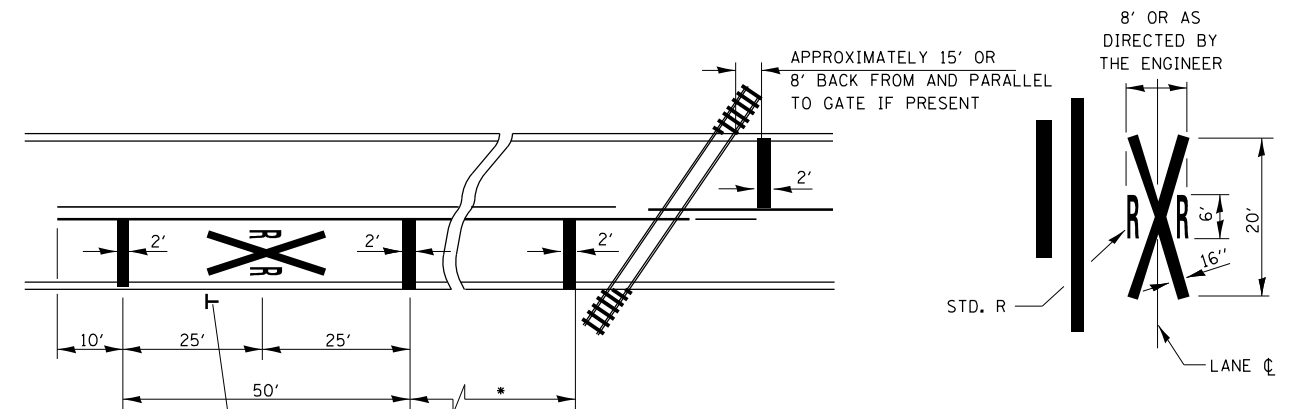
CENTERLINE & NO PASSING ZONE LINES - YELLOW

PAVEMENT MARKING



NOTE:
WHEN MILLING OPERATIONS PRODUCE A ROUNDED EDGE, THEN A SAW CUT SHALL BE USED TO MANUFACTURE A PERPENDICULAR EDGE AS SHOWN IN THE DETAIL. THE ENGINEER SHALL BE THE SOLE JUDGE CONCERNING THE USE OF THIS DETAIL.

HMA DETAIL AT BUTT JOINTS



* MINIMUM DISTANCE
400' FOR 55 MPH
250' FOR 45 MPH
100' FOR 35 MPH OR LESS

NOTES:
THE TRANSVERSE SPREAD OF THE "X" MAY VARY ACCORDING TO LANE WIDTH.

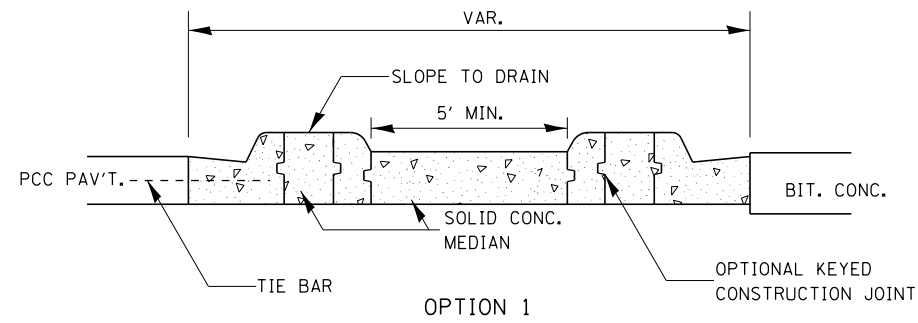
ON MULTI-LANE ROADS, THE STOP LINES SHALL EXTEND ACROSS ALL APPROACH LANES AND SEPARATE RXR SYMBOLS SHALL BE PLACED ADJACENT TO EACH OTHER IN EACH LANE.

WHEN THE PAVEMENT MARKING SYMBOL IS USED, A PORTION OF THE SYMBOL SHOULD BE LOCATED DIRECTLY ADJACENT TO THE ADVANCE WARNING SIGN (W10-1).

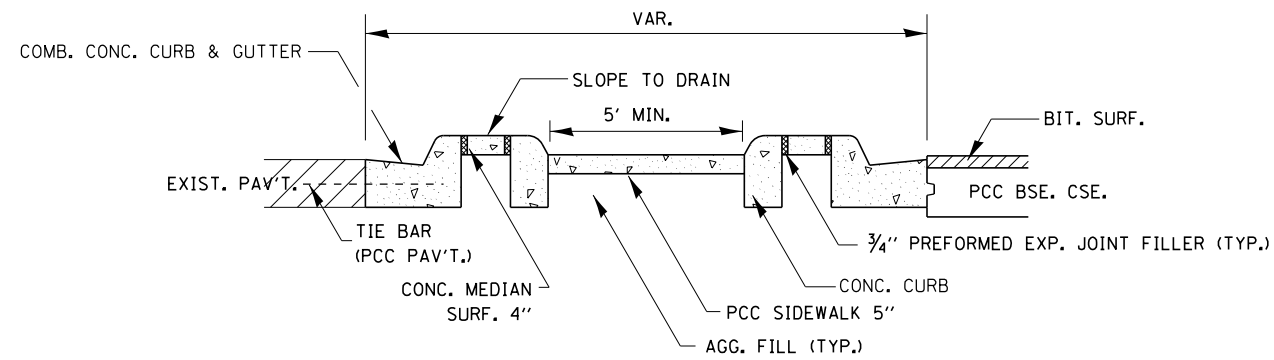
PAVEMENT MARKINGS AT RAILROAD-HIGHWAY GRADE CROSSING

NOTE:
DO NOT REPLACE THE STOP BARS CLOSEST TO THE TRACKS ON EACH SIDE. WE DO NOT HAVE RR LIABILITY INSURANCE SO ONLY MOVING OPERATIONS SHALL BE PERFORMED IN THIS AREA.

FILE NAME =	USER NAME = JULIANS	DESIGNED -	REVISED -	STATE OF ILLINOIS DEPARTMENT OF TRANSPORTATION	DETAILS			F.A.P. RTE.	SECTION	COUNTY	TOTAL SHEETS	SHEET NO.			
pw:\11084EBIDINTEG\Illinois.gov\PWIDOT\Documents\DOT Offices\District 3\Projects\0366\DRAWING>Data\B366F27-sht-details.dgn		CHECKED -	REVISED -		SCALE:	SHEET	OF	SHEETS	STA.	TO STA.	326	12ORS-4	LIVINGSTON	31	30
Default		DATE -	REVISED -		CONTRACT NO. 66F27										
					ILLINOIS FED. AID PROJECT										



OPTION 1



OPTION 2

SECTION B-B

GENERAL NOTES

SEE STANDARDS 606001, 606301, 424031, AND PLAN SHEETS FOR STATION, OFFSETS, RADII, DIMENSIONS, AND DETAILS NOT SHOWN.

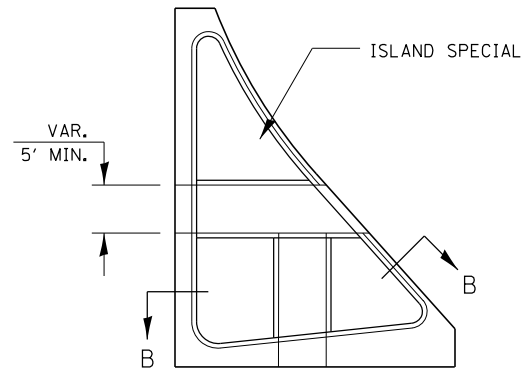
THE SIDEWALK SHOULD DRAIN TO THE LOW SIDE OF THE ISLAND. IF NECESSARY THE SIDEWALK SHALL BE SLOPED TO DRAIN AT A MAXIMUM 2% GRADE.

THE SIDEWALK SHOULD NOT BE CLOSER THAN 3' FROM THE CORNER OF THE ISLAND.

KEYED LONGITUDINAL CONSTRUCTION JOINTS SHALL BE CONSTRUCTED WITHOUT TIE BARS.

LOCATIONS, LAYOUTS, AND WIDTHS OF THE FLUSH SIDEWALK AREA, SHALL BE DETERMINED BY THE DESIGNER AND SHOWN ON THE PLANS.

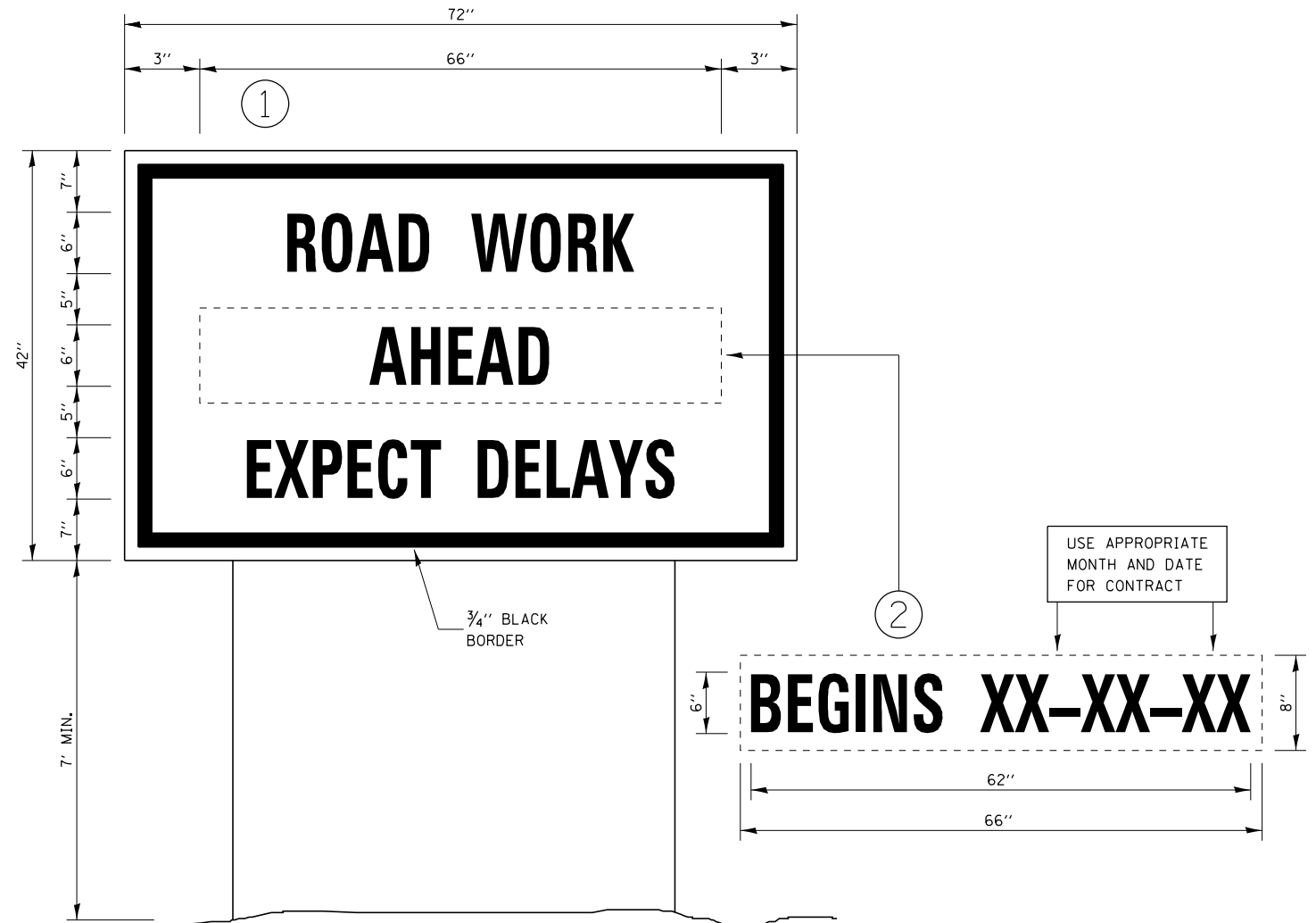
THE ISLANDS WILL BE MEASURED FOR PAYMENT FROM E.O.P. TO E.O.P. USING EITHER OPTION 1 OR OPTION 2, AS DIRECTED BY THE ENGINEER, AND WILL BE PAID FOR AT THE CONTRACT UNIT PRICE PER SQ. FT. FOR CONCRETE MEDIAN (SPECIAL), WHICH SHALL INCLUDE THE CURB, COMBINATION CURB & GUTTER, SIDEWALK, AGGREGATE FILL, CONCRETE MEDIAN SURFACE, AND SOLID CONCRETE MEDIAN.



INTERMEDIATE ISLAND

(FOR RIGHT TURN LANE DESIGN)

PCC ISLANDS AND MEDIANS ACCESSIBLE TO THE DISABLED



TEMPORARY INFORMATION SIGNING

NOTES:

- USE 6" D BLACK LETTERING ON FLOURESENT ORANGE BACKGROUND.
- ERECT SIGNS AT LOCATIONS IN ADVANCE OF THE "ROAD CONSTRUCTION AHEAD" SIGNS AS DIRECTED BY THE ENGINEER.
- ERECT SIGN ① WITH INSTALLED PANEL ② A MINIMUM OF ONE WEEK PRIOR TO THE START OF THE LANE CLOSURE.
- REMOVE PANEL ② ON THAT DATE.
- SEE SPECIAL PROVISION "TEMPORARY INFORMATION SIGNING" FOR ADDITIONAL INFORMATION.
- WILL BE PAID FOR PER SQ FT AS "TEMPORARY INFORMATION SIGNING". EACH SIGN = 21 SQ FT AND THE DATE PANEL ② WILL NOT BE MEASURED SEPARATELY FOR PAYMENT.

FILE NAME =	USER NAME = JULIANSA	DESIGNED -	REVISED -	STATE OF ILLINOIS DEPARTMENT OF TRANSPORTATION	DETAILS	F.A.P. RTE.	SECTION	COUNTY	TOTAL SHEETS	SHEET NO.	
pk:\IL\084EBID\INTEG.illinois.gov\FWIDOT\Documents\1007 Offices\District 3\Projects\0366\DRAWING\0366F27-sht-details.dgn		CHECKED -	REVISED -			326	12ORS-4	LIVINGSTON	31	31	
Default	PLOT SCALE = 100.3350' / in.	DATE -	REVISED -			CONTRACT NO. 66F27					
	PLOT DATE = 3/16/2016					ILLINOIS FED. AID PROJECT					