

PROPOSED HIGHWAY PLANS

F.A.P. ROUTE 796, F.A.S. ROUTE 1323 (IL 115)
SECTION D3 AGGREGATE SHOULDERS 2016-1
KANKAKEE COUNTY

C-93-061-16

FAP/FAS RTE.	SECTION	COUNTY	TOTAL SHEETS	SHEET NO.
796/1323	D3 AGGREGATE SHOULDERS 2016-1	KANKAKEE ILLINOIS	6	1
CONTRACT NO. 66F31				

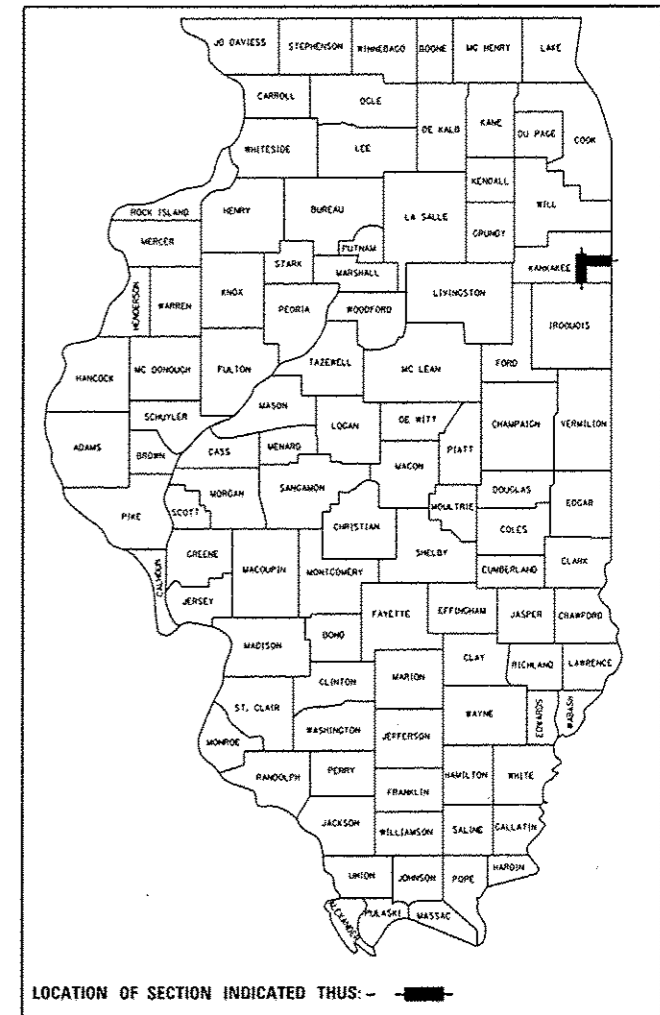
INDEX OF SHEETS

1. COVER SHEET
2. GENERAL NOTES
3. SUMMARY OF QUANTITIES
4. TYPICAL SECTIONS
5. SCHEDULES
6. DETAILS

STANDARDS

- | | |
|-----------|--|
| 000001-06 | STANDARD SYMBOLS, ABBREVIATIONS AND PATTERNS |
| 001006 | DECIMAL OF AN INCH AND OF A FOOT |
| 701006-05 | OFF-ROAD OPERATIONS 2L, 2W, 15' (4.5 m) TO 24" (600 mm) FROM |
| 701101-05 | OFF-ROAD OPERATIONS, MULTILANE, 15' (4.5 m) TO 24" (600 mm) FROM PAVEMENT EDGE |
| 701301-04 | LANE CLOSURE, 2L, 2W, SHORT TIME OPERATIONS |
| 701306-03 | LANE CLOSURE, 2L, 2W, SLOW MOVING OPERATIONS DAY ONLY, |
| 701901-05 | TRAFFIC CONTROL DEVICES |

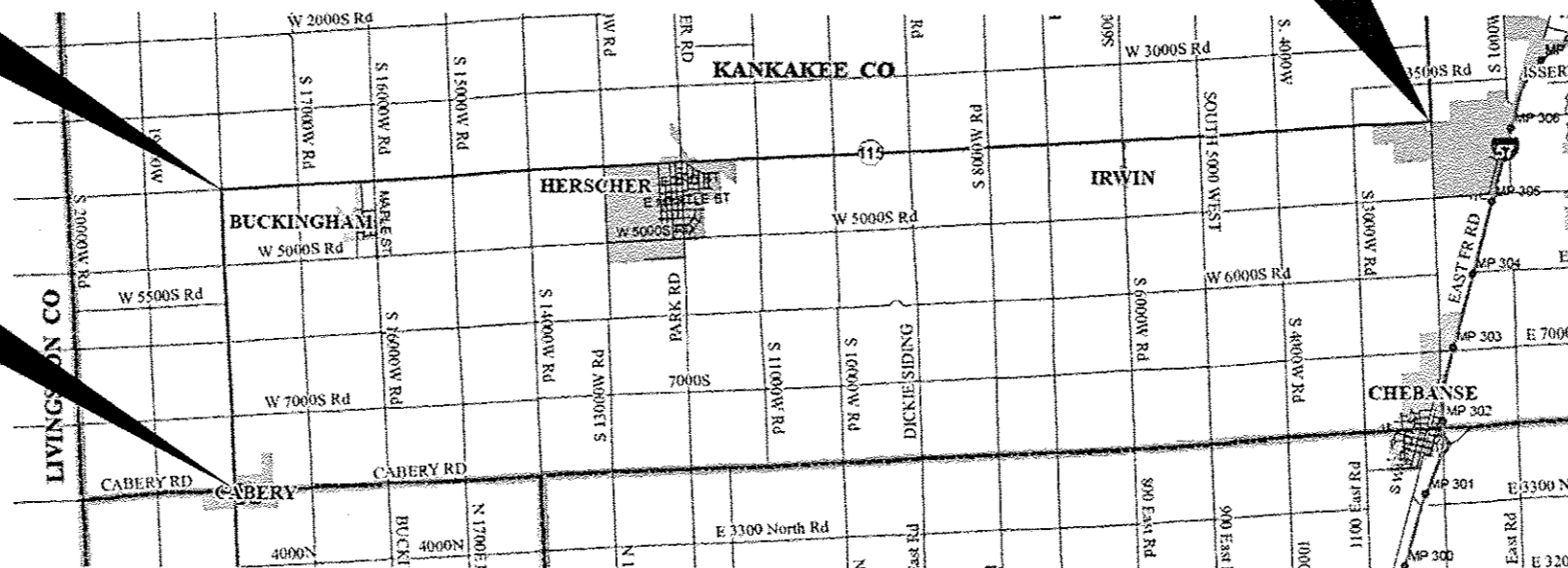
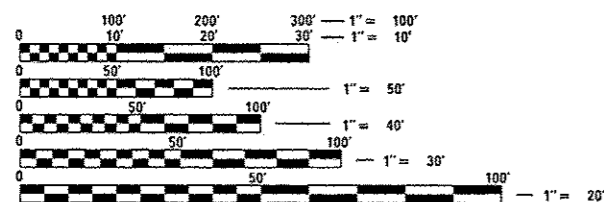
D-93-002-16



FAP 796 ENDS
FAS 1323 BEGINS
18000W RD. (CH 18) (LM 4.0)

IMPROVEMENT ENDS
2000W RD. (CH 58) (LM 19.75)

IMPROVEMENT BEGINS
FAP 796: FORD COUNTY LINE (LM 0.00)
FAS 1323 18000W RD. (LM 4.0)



FULL SIZE PLANS HAVE BEEN PREPARED USING STANDARD ENGINEERING SCALES. REDUCED SIZED PLANS WILL NOT CONFORM TO STANDARD SCALES. IN MAKING MEASUREMENTS ON REDUCED PLANS, THE ABOVE SCALES MAY BE USED.

J.U.L.I.E.
JOINT UTILITY LOCATION INFORMATION FOR EXCAVATION
1-800-892-0123
OR 811

FAP 796: GROSS LENGTH = 21120 FT. = 4.00 MILE
NET LENGTH = 21120 FT. = 4.00 MILE

FAS 1323: GROSS LENGTH = 83160 FT. = 15.75 MILE
NET LENGTH = 83160 FT. = 15.75 MILE

PROJECT ENGINEER: JOE KANNEL
UNIT CHIEF: RON WOODSHANK

CONTRACT NO. 66F31

RURAL MINOR ARTERIAL		RURAL MAJOR COLLECTOR	
FAP 796		FAS 1323	
2015		2015	
ADT	525	ADT	2700
P. V.	90.48%	P. V.	80.90%
S. U.	5.71%	S. U.	11.30%
M. U.	3.81%	M. U.	7.80%

STATE OF ILLINOIS
DEPARTMENT OF TRANSPORTATION
DIVISION OF HIGHWAYS

SUBMITTED March 24 2016
Paul Coetzee REGIONAL ENGINEER

Maureen M. Addis PE
ENGINEER OF DESIGN AND ENVIRONMENT

Chris Esman PE
DIRECTOR OF HIGHWAYS, CHIEF ENGINEER

PRINTED BY THE AUTHORITY
OF THE STATE OF ILLINOIS

COMMITMENTS

GENERAL NOTES

PLAN DIMENSIONS AND DETAILS RELATIVE TO EXISTING PLANS ARE SUBJECT TO NOMINAL CONSTRUCTION VARIATIONS. THE CONTRACTOR SHALL FIELD VERIFY EXISTING DIMENSIONS AND DETAILS AFFECTING NEW CONSTRUCTION AND MAKE NECESSARY APPROVED ADJUSTMENTS PRIOR TO CONSTRUCTION OR ORDERING OF MATERIALS. SUCH VARIATIONS SHALL NOT BE CAUSE FOR ADDITIONAL COMPENSATION FOR A CHANGE IN SCOPE OF WORK; HOWEVER, THE CONTRACTOR WILL BE PAID FOR THE QUANTITY ACTUALLY FURNISHED AT THE UNIT PRICE BID FOR THE WORK.

ALL EXCAVATED MATERIAL, WHICH INCLUDES DIGGING OR GRADING OF ANY SOIL OR FILL MATERIAL, WITH THE EXCEPTION OF AGGREGATE FILLS, MUST BE INCORPORATED WITHIN THE IDOT RIGHT OF WAY DUE TO ENVIRONMENTAL DOCUMENTATION REQUIREMENTS.

ANY REFERENCE TO A STANDARD IN THESE PLANS SHALL BE INTERPRETED TO MEAN THE EDITION AS INDICATED BY THE SUBNUMBER SHOWN IN THE LIST OF STANDARDS OR THE COPY INCLUDED IN THESE PLANS.

THE FOLLOWING RATES OF APPLICATION HAVE BEEN USED IN CALCULATING PLAN QUANTITIES:

GRANULAR MATERIALS	2.05	TONS / CU YD
--------------------	------	--------------

THE CONTRACTOR SHALL CONTACT JULIE AT LEAST 48 HOURS PRIOR TO EXCAVATION TO DETERMINE WHICH UTILITIES ARE IN THE AREA.

STATE OF ILLINOIS
DEPARTMENT OF TRANSPORTATION
DISTRICT THREE
AS BUILT INFORMATION

SUPERVISING CONSTRUCTION FIELD ENGINEER

RESIDENT ENGINEER / TECHNICIAN

START & END DATES
OF CONSTRUCTION:

INSPECTORS:

STATE OF ILLINOIS
DEPARTMENT OF TRANSPORTATION
DISTRICT THREE

PREPARED BY: Tom Boni L
DISTRICT STUDIES & PLANS ENGINEER

DATE: March 24, 2016

EXAMINED BY: [Signature]
DISTRICT CONSTRUCTION ENGINEER

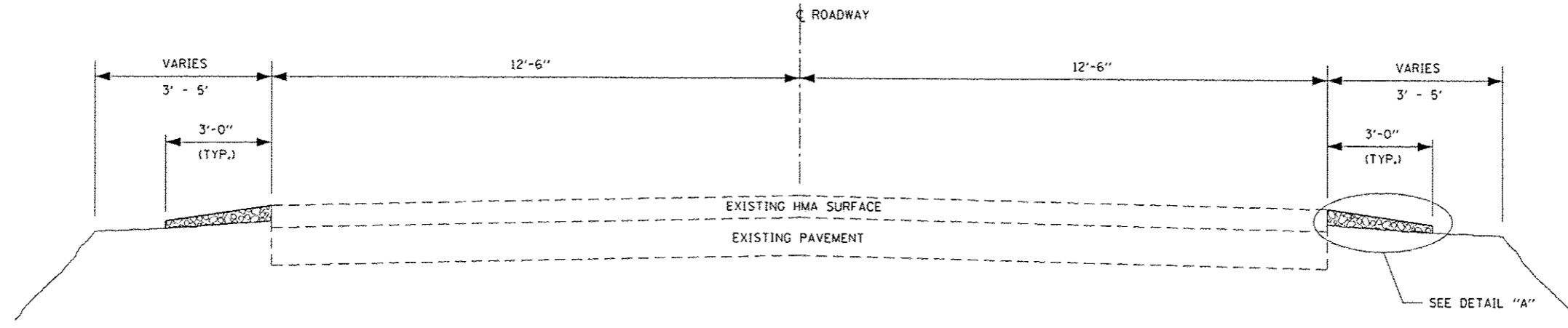
[Signature]
DISTRICT MATERIALS ENGINEER

[Signature]
DISTRICT OPERATIONS ENGINEER

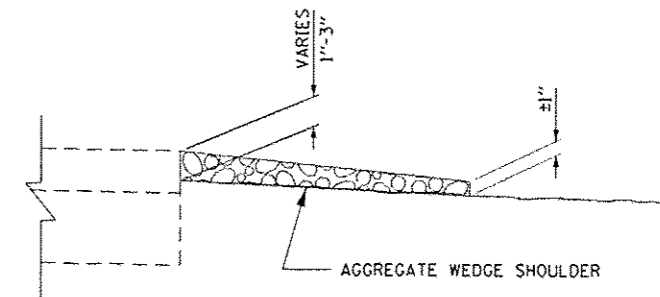
FILE NAME : p:\11\04E010\INTEG\Illinois.gov\IDOT\Documents\IDOT Offices\District 3\Projects\036\DRAWING\0366F31-shi-details.dgn	USER NAME : plesschr	DESIGNED -	REVISED -	STATE OF ILLINOIS DEPARTMENT OF TRANSPORTATION	GENERAL NOTES	FAP/FAS RTE.	SECTION	COUNTY	TOTAL SHEETS	SHEET NO.
	PLOT SCALE : 100.0000 1/ in.	CHECKED -	REVISED -			796/1323	03 AGGREGATE SHOULDERS 2016-1	KANKAKEE	6	2
Default	PLOT DATE : 3/24/2016	DATE -	REVISED -	SCALE:	SHEET OF SHEETS STA. TO STA.	ILLINOIS FED. AID PROJECT CONTRACT NO. 66F31				

CODE NO.	ITEM	UNIT	TOTAL QUANTITY	CONSTR. CODE
				CONT. MAINT. 100% STATE ROADWAY 0021 RURAL
48102100	AGGREGATE WEDGE SHOULDER, TYPE B	TON	5539	5539
67100100	MOBILIZATION	LSUM	1	1
70100460	TRAFFIC CONTROL AND PROTECTION, STANDARD 701306	LSUM	1	1

3



TYPICAL SECTION



DETAIL A

FILE NAME : p:\11\184E810INTEG\11\inois.gov\PKIDOT\De	USER NAME : pletechr	DESIGNED -	REVISED -	STATE OF ILLINOIS DEPARTMENT OF TRANSPORTATION	TYPICAL SECTIONS	FAP/FAS RTE.	SECTION	COUNTY	TOTAL SHEETS	SHEET NO.	
		DRAWN Data\B366F31-shd-detail.dgn	REVISED -			796/1323	D3 AGGREGATE SHOULDERS 2016-1	KANKAKEE	6	4	
		CHECKED -	REVISED -			CONTRACT NO. 66F31					
		DATE -	REVISED -			ILLINOIS FED. AID PROJECT					
Default	PLOT SCALE = 100.0000' / in.			SCALE:	SHEET OF SHEETS	STA. TO STA.					
	PLOT DATE = 3/24/2016										

SCHEDULE - NORTHBOUND LANE

LOG MILE	DISTANCE	WIDTH	AVE. DEPTH	TONS	
LM - LM	FEET	FEET	INCHES		
FAP 796					
0.00	0.07	FORD COUNTY LINE			
0.07	0.10	158	3	1 3/4	6
0.10	1.10	5280	3	1 3/4	176
1.10	1.20	GAP BOX CULVERT			
1.20	1.70	2640	3	1 3/4	88
1.70	1.80	GAP BOX CULVERT			
1.80	4.00	11616	3	1 3/4	386
TOTAL					656

SCHEDULE - EASTBOUND LANE

LOG MILE	DISTANCE	WIDTH	AVE. DEPTH	TONS	
LM - LM	FEET	FEET	INCHES		
FAS 1323					
4.00	4.20	GAP			
4.20	5.60	7392	3	1 3/4	246
5.60	5.65	GAP			
5.65	7.00	7128	3	1 3/4	237
7.00	7.75	3960	3	1 3/4	132
7.75	7.78	GAP			
7.78	8.30	2746	3	1 3/4	92
8.30	8.40	GAP STRUCTURE NO. 046-0109			
8.40	9.00	3168	3	1 3/4	106
9.00	9.60	3168	3	1	61
9.60	10.10	GAP CC&G Herscher			
10.10	11.20	5808	3	1 3/4	193
11.20	12.50	6864	3	1 1/4	163
12.50	14.00	7920	3	1 3/4	264
14.00	15.70	8976	3	1 3/4	299
15.70	18.20	13200	3	1 1/4	314
18.20	19.75	8184	3	1 1/4	195
TOTAL					2302

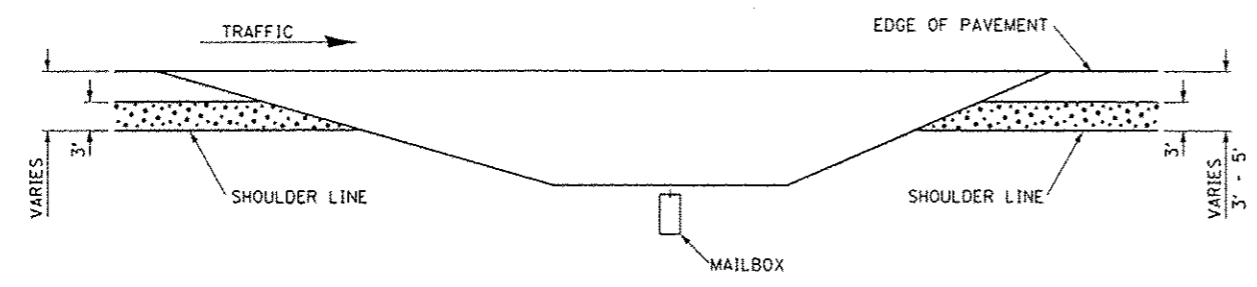
SCHEDULE - WESTBOUND LANE

LOG MILE	DISTANCE	WIDTH	AVE. DEPTH	TONS	
LM - LM	FEET	FEET	INCHES		
FAS1323					
19.75	19.70	GAP			
19.70	19.20	2640	3	1 1/4	63
19.20	18.00	6336	3	1 1/2	181
18.00	16.50	7920	3	1 3/4	264
16.50	16.40	GAP			
16.40	11.90	23760	3	1 1/4	564
11.90	10.05	9768	3	1	186
10.05	9.40	GAP CC&G Herscher			
9.40	8.30	5808	3	1 1/2	166
8.30	8.20	GAP			
8.20	7.70	2640	3	1 3/4	88
7.70	7.60	GAP			
7.60	6.30	6864	3	1 3/4	229
6.30	6.25	GAP			
6.25	5.50	3960	3	1 3/4	132
5.50	5.40	GAP			
5.40	4.10	6864	3	1 3/4	229
4.10	4.00	GAP			
TOTAL					2102

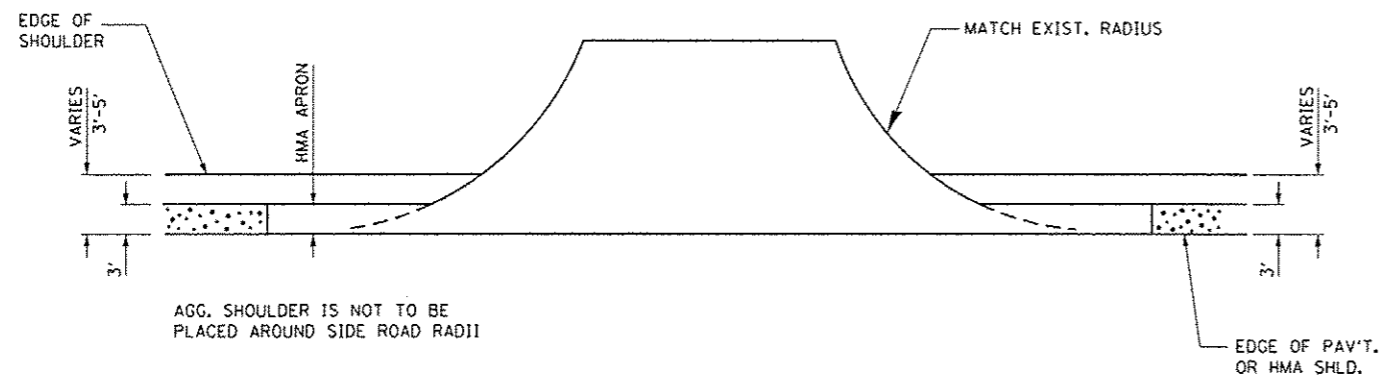
SCHEDULE - SOUTHBOUND LANE

LOG MILE	DISTANCE	WIDTH	AVE. DEPTH	TONS	
LM - LM	FEET	FEET	INCHES		
FAP 796					
4.00	3.80	1056	3	1 3/4	36
3.80	3.60	GAP			
3.60	1.60	10560	3	1 3/4	351
1.60	1.50	GAP			
1.50	1.20	1584	3	1	31
1.20	1.10	GAP			
1.10	0.50	3168	3	1	61
0.50	0.00	GAP			
TOTAL					479

825.08 WAP

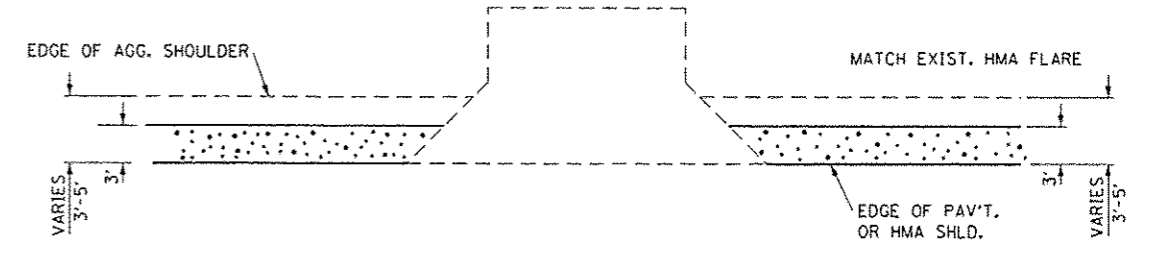


PLAN AT MAIL BOX TURNOUTS



AGG. SHOULDER IS NOT TO BE PLACED AROUND SIDE ROAD RADII

PLAN AT SIDE ROADS



PLAN AT PRIVATE & COMMERCIAL ENTRANCES

FILE NAME :	USER NAME = pletscher	DESIGNED -	REVISED -	STATE OF ILLINOIS DEPARTMENT OF TRANSPORTATION	DETAILS	FAP/FAS RTE.	SECTION	COUNTY	TOTAL SHEETS	SHEET NO.
p:\11\084EBID\1EG\Illinois.gov\PIDOT\Documents\1001 Offices\District 3\Projects\0266\Drawings\0366F31-sht-details.dgn	DRAWN	REVISED -	REVISED -			796/1323	D3 AGGREGATE SHOULDERS 2016-1	KANKAKEE	6	6
PLOT SCALE = 100.0000' / 1"	CHECKED -	REVISED -	REVISED -			CONTRACT NO. 66F31				
Default	DATE -	REVISED -	REVISED -			ILLINOIS FED. AID PROJECT				
SCALE:						SHEET OF SHEETS STA. TO STA.				