

PROPOSED HIGHWAY PLANS

F.A.S. ROUTE 310 (IL 17) SECTION D3 AGGREGATE SHOULDERS 2016-2 KANKAKEE COUNTY

C-93-063-16

FAS RTE.	SECTION	COUNTY	TOTAL SHEETS	SHEET NO.
310	D3 AGGREGATE SHOULDERS 2016-2	KANKAKEE	6	1
		ILLINOIS	CONTRACT NO. 66F33	

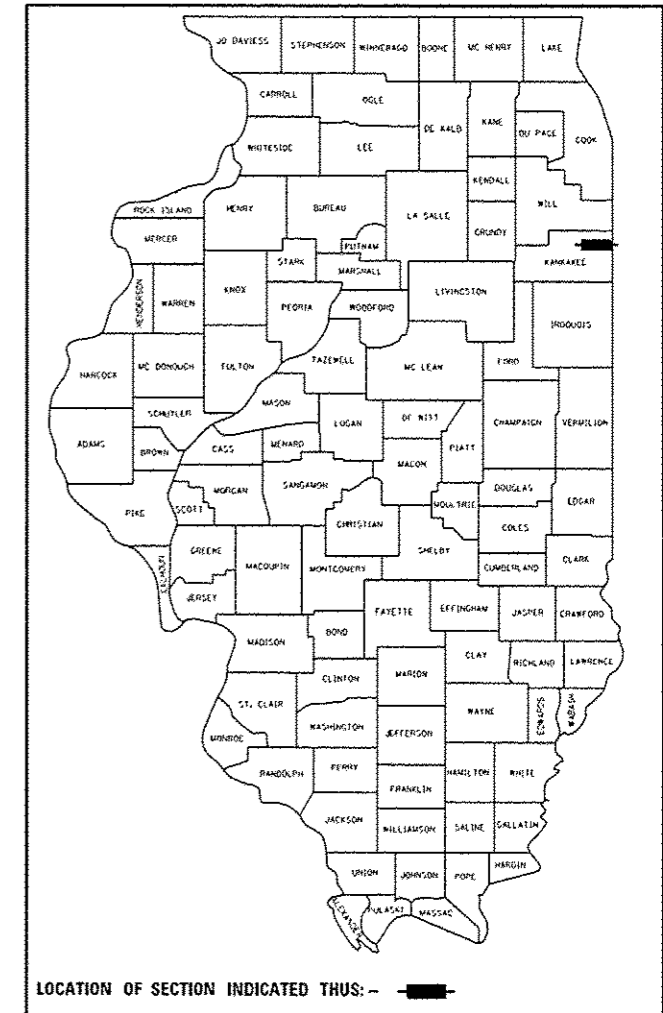
INDEX OF SHEETS

1. COVER SHEET
2. GENERAL NOTES
3. SUMMARY OF QUANTITIES
4. TYPICAL SECTIONS
5. SCHEDULES
6. DETAILS

STANDARDS

- | | |
|-----------|--|
| 000001-06 | STANDARD SYMBOLS, ABBREVIATIONS AND PATTERNS |
| 001006 | DECIMAL OF AN INCH AND OF A FOOT |
| 701006-05 | OFF-ROAD OPERATIONS 2L, 2W, 15' (4.5 m) TO 24" (600 mm) FROM |
| 701101-05 | OFF-ROAD OPERATIONS, MULTILANE, 15' (4.5 m) TO 24" (600 mm) FROM PAVEMENT EDGE |
| 701301-04 | LANE CLOSURE, 2L, 2W, SHORT TIME OPERATIONS |
| 701306-03 | LANE CLOSURE, 2L, 2W, SLOW MOVING OPERATIONS DAY ONLY. |
| 701901-05 | TRAFFIC CONTROL DEVICES |

D-93-002-16

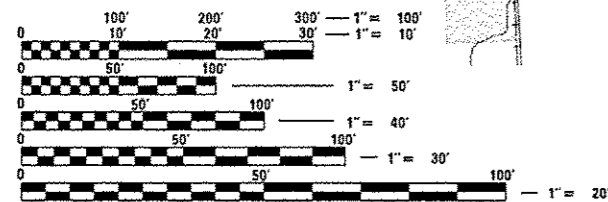


IMPROVEMENT BEGINS

N. JUNCTION IL 117
(LM 0.00)

IMPROVEMENT ENDS

INDIANA STATE LINE
(LM 5.8)



FULL SIZE PLANS HAVE BEEN PREPARED USING STANDARD ENGINEERING SCALES. REDUCED SIZED PLANS WILL NOT CONFORM TO STANDARD SCALES. IN MAKING MEASUREMENTS ON REDUCED PLANS, THE ABOVE SCALES MAY BE USED.

J.U.I.E.
JOINT UTILITY LOCATION INFORMATION FOR EXCAVATION
1-800-892-0123
OR 811

PROJECT ENGINEER: JOE KANNEL
UNIT CHIEF: RON WOODSHANK

CONTRACT NO. 66F33

GROSS LENGTH = 30624 FT. = 5.80 MILE
NET LENGTH = 30624 FT. = 5.80 MILE

RURAL
MAJOR COLLECTOR
FAS 310 (IL 17)
2015

ADT	3200
P. V.	64.77%
S. U.	7.03%
M. U.	28.20%

STATE OF ILLINOIS
DEPARTMENT OF TRANSPORTATION
DIVISION OF HIGHWAYS

SUBMITTED March 24 2016
Paul Loete, P.E.
REGIONAL ENGINEER

May 6 2016
Maureen M. Addis, P.E.
ENGINEER OF DESIGN AND ENVIRONMENT

May 6 2016
Onur Osman, P.E.
DIRECTOR OF HIGHWAYS, CHIEF ENGINEER

PRINTED BY THE AUTHORITY
OF THE STATE OF ILLINOIS

GENERAL NOTES

PLAN DIMENSIONS AND DETAILS RELATIVE TO EXISTING PLANS ARE SUBJECT TO NOMINAL CONSTRUCTION VARIATIONS. THE CONTRACTOR SHALL FIELD VERIFY EXISTING DIMENSIONS AND DETAILS AFFECTING NEW CONSTRUCTION AND MAKE NECESSARY APPROVED ADJUSTMENTS PRIOR TO CONSTRUCTION OR ORDERING OF MATERIALS. SUCH VARIATIONS SHALL NOT BE CAUSE FOR ADDITIONAL COMPENSATION FOR A CHANGE IN SCOPE OF WORK; HOWEVER, THE CONTRACTOR WILL BE PAID FOR THE QUANTITY ACTUALLY FURNISHED AT THE UNIT PRICE BID FOR THE WORK.

ALL EXCAVATED MATERIAL, WHICH INCLUDES DIGGING OR GRADING OF ANY SOIL OR FILL MATERIAL, WITH THE EXCEPTION OF AGGREGATE FILLS, MUST BE INCORPORATED WITHIN THE IDOT RIGHT OF WAY DUE TO ENVIRONMENTAL DOCUMENTATION REQUIREMENTS.

ANY REFERENCE TO A STANDARD IN THESE PLANS SHALL BE INTERPRETED TO MEAN THE EDITION AS INDICATED BY THE SUBNUMBER SHOWN IN THE LIST OF STANDARDS OR THE COPY INCLUDED IN THESE PLANS.

THE FOLLOWING RATES OF APPLICATION HAVE BEEN USED IN CALCULATING PLAN QUANTITIES:

GRANULAR MATERIALS	2.05	TONS / CU YD
--------------------	------	--------------

THE CONTRACTOR SHALL CONTACT JULIE AT LEAST 48 HOURS PRIOR TO EXCAVATION TO DETERMINE WHICH UTILITIES ARE IN THE AREA.

COMMITMENTS

STATE OF ILLINOIS
DEPARTMENT OF TRANSPORTATION
DISTRICT THREE
AS BUILT INFORMATION

SUPERVISING CONSTRUCTION FIELD ENGINEER

RESIDENT ENGINEER / TECHNICIAN

START & END DATES
OF CONSTRUCTION:

INSPECTORS:

STATE OF ILLINOIS
DEPARTMENT OF TRANSPORTATION
DISTRICT THREE

PREPARED BY: Don Benil
DISTRICT STUDIES & PLANS ENGINEER

DATE: March 24, 2016

EXAMINED BY: [Signature]
DISTRICT CONSTRUCTION ENGINEER

[Signature]
DISTRICT MATERIALS ENGINEER

[Signature]
DISTRICT OPERATIONS ENGINEER

STATE OF ILLINOIS
DEPARTMENT OF TRANSPORTATION

GENERAL NOTES

FILE NAME :	USER NAME :	DESIGNED :	REVISED :
pa\N\IL084ERIDINTEG\Illinois.gov\PIDOT\00	uments\IDOT Offices\District 3\Projects\0366	DRAWN	0366F33-shr-details.dgn
	PLOT SCALE :	CHECKED :	REVISED :
Default	100.0000' / 1"	DATE :	REVISED :
	PLOT DATE :		
	3/24/2016		

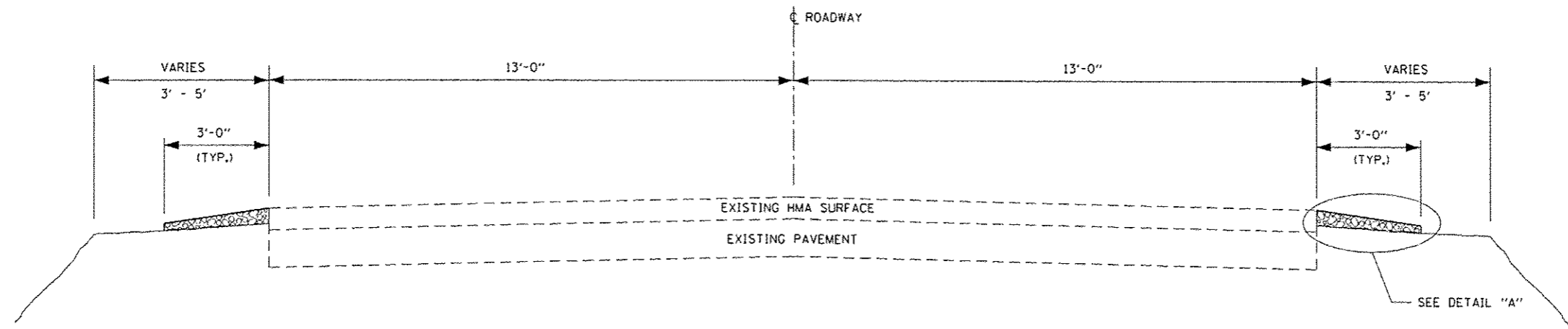
SCALE: SHEET OF SHEETS STA. TO STA.

FAS RTE.	SECTION	COUNTY	TOTAL SHEETS	SHEET NO.
310	D3 AGGREGATE SHOULDERS 2016-2	KANKAKEE	6	2
				CONTRACT NO. 66F33
ILLINOIS FED. AID PROJECT				

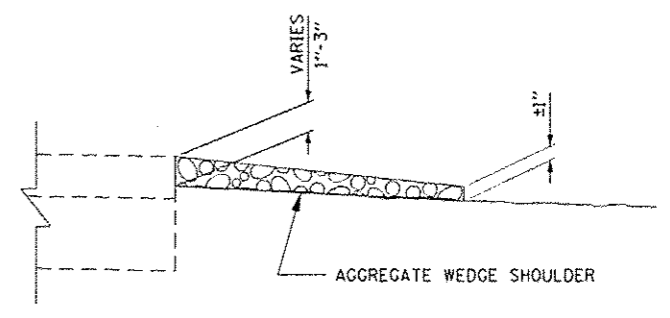
CODE NO.	ITEM	UNIT	TOTAL QUANTITY	CONSTR. CODE
				CONT. MAINT.
				100% STATE
				ROADWAY
				0021
				RURAL
48102100	AGGREGATE WEDGE SHOULDER, TYPE B	TON	1510	1510
67100100	MOBILIZATION	LSUM	1	1
70100460	TRAFFIC CONTROL AND PROTECTION, STANDARD 701306	LSUM	1	1

3

FILE NAME :	USER NAME : pletschr	DESIGNED -	REVISED -	STATE OF ILLINOIS DEPARTMENT OF TRANSPORTATION	SUMMARY OF QUANTITIES	FAS	SECTION	COUNTY	TOTAL	SHEET
p:\JL\B84EBIQNTEG\Illinois.gov\PI007\04	umants\1007 Offices\District 3\Projects\0304	DRAWN	REVISED -			310	03 AGGREGATE SHOULDERS 2016-2	KANKAKEE	6	3
		CHECKED -	REVISED -			CONTRACT NO. 66F33				
Default	PLOT DATE : 3/24/2016	DATE -	REVISED -			SCALE:	SHEET OF SHEETS STA. TO STA.	ILLINOIS FED. AID PROJECT		



TYPICAL SECTION



DETAIL A

FILE NAME :	USER NAME : pletsch	DESIGNED -	REVISED -
p:\1\1884EBID\INTEG\Illinois.gov\PI\DOT\Documents\1001 Of files\District 3\Projects\036\Drawings\03666F33-shr-detail.dgn		CHECKED -	REVISED -
Default	PLOT DATE : 3/24/2016	DATE -	REVISED -

STATE OF ILLINOIS
DEPARTMENT OF TRANSPORTATION

TYPICAL SECTIONS

SCALE: SHEET OF SHEETS STA. TO STA.

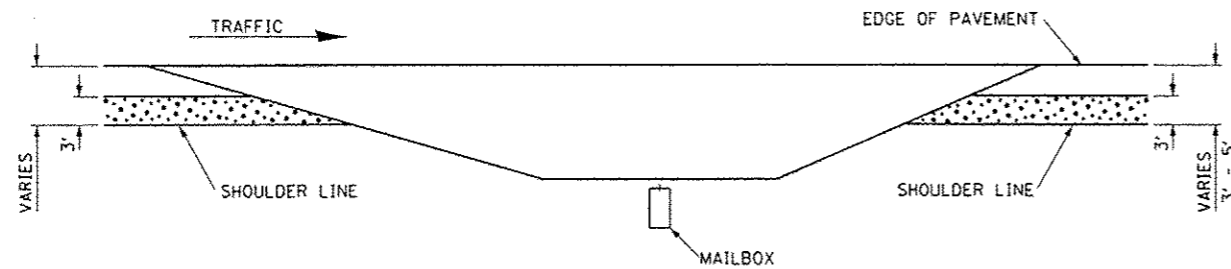
FAS RTE.	SECTION	COUNTY	TOTAL SHEETS	SHEET NO.
310	D3 AGGREGATE SHOULDERS 2016-2	KANKAKEE	6	4
ILLINOIS FED. AID PROJECT			CONTRACT NO. 66F33	

SCHEDULE - EASTBOUND LANE

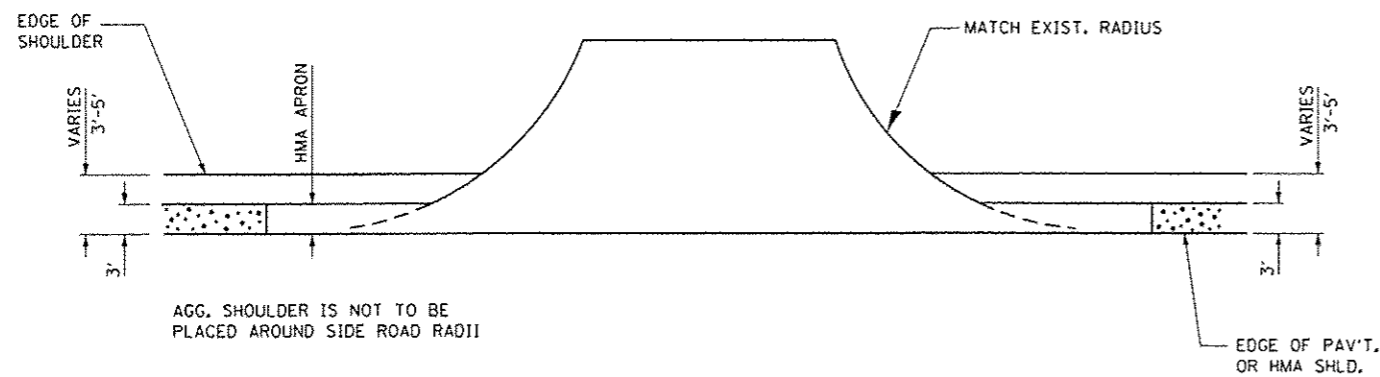
LOG MILE	DISTANCE	WIDTH	AVE. DEPTH	TONS	
LM - LM	FEET	FEET	INCHES		
	0.00	END OF PAVED SHOULDER			
0.00	0.15	GAP			
0.15	0.19	211	3	1 3/4	8
0.19	0.50	GAP			
0.50	1.10	3168	3	1 3/4	106
1.10	1.30	GAP			
1.30	1.70	2112	3	1 3/4	71
1.70	1.92	STRUCTURE NO. 046-0127			
1.92	2.05	686	3	1 3/4	23
2.05	2.20	GAP			
2.20	3.25	5544	3	1 3/4	185
3.25	3.50	GAP			
3.50	4.20	3696	3	1 3/4	123
4.20	4.40	GAP			
4.40	4.60	1056	3	1 3/4	36
4.60	4.69	STRUCTURE NO. 046-0129			
4.69	4.90	1109	3	1 3/4	37
4.90	5.10	GAP			
5.10	5.80	3696	3	1 3/4	123
TOTAL					712

SCHEDULE - WESTBOUND LANE

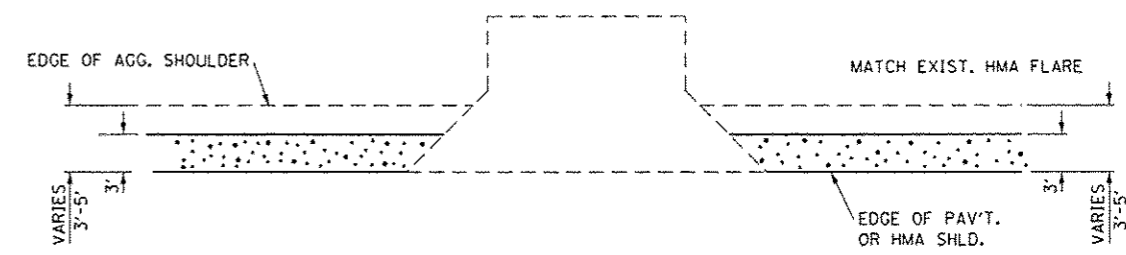
LOG MILE	DISTANCE	WIDTH	AVE. DEPTH	TONS	
LM - LM	FEET	FEET	INCHES		
5.80	5.60	1056	3	1 3/4	36
5.60	5.40	GAP			
5.40	4.70	3696	3	1 3/4	123
4.70	4.60	STRUCTURE NO. 046-0129			
4.60	4.20	2112	3	1 3/4	71
4.20	3.30	4752	3	1 3/4	158
3.30	3.25	GAP			
3.25	1.90	7128	3	1 3/4	237
1.90	1.70	STRUCTURE NO. 046-0127			
1.70	1.10	3168	3	1	61
1.10	0.80	1584	3	1	31
0.80	0.00	4224	3	1	81
TOTAL					798



PLAN AT MAIL BOX TURNOUTS



PLAN AT SIDE ROADS



PLAN AT PRIVATE & COMMERCIAL ENTRANCES

FILE NAME :	USER NAME : plecter	DESIGNED -	REVISED -	STATE OF ILLINOIS DEPARTMENT OF TRANSPORTATION	DETAILS	F&S RTE.	SECTION	COUNTY	TOTAL SHEETS	SHEET NO.	
p:\L\084EBID\TEG\Illinois.gov\PWID07\Documents\1007 Offices\District 3\Projects\0366\Drawings\0366F33-shld-details.dgn	DRAWN	REVISED -	REVISED -			310	03 AGGREGATE SHOULDERS 2016-2	KANKAKEE	6	6	
Default	PLT SCALE = 100.0000' / 1" =	CHECKED -	REVISED -			SCALE:		SHEET OF SHEETS		STA. TO STA.	CONTRACT NO. 66F33
	PLT DATE = 3/24/2016	DATE -	REVISED -			ILLINOIS FED. AID PROJECT					