

INDEX OF SHEETS

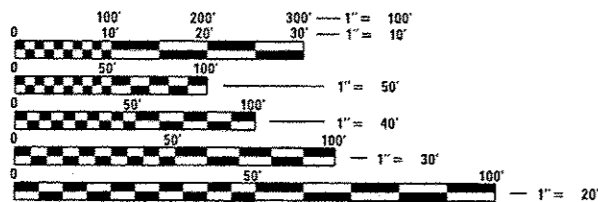
1. COVER SHEET
2. GENERAL NOTES, JOB SPECIFIC NOTES & COMMITMENTS
- 3-4. SUMMARY OF QUANTITIES
- 5-8. LINE DIAGRAM
- 9-13. SCHEDULE OF QUANTITIES
- 14-21. CRASHWALL EXTENSION DETAIL
- 22-23. GUARDRAIL EROSION CONTROL TREATMENTS 630101-D4

HIGHWAY STANDARDS

- 630001-10
- 631011-09
- 631031-14
- 631033-06
- 701101-05
- 701400-08
- 701401-09
- 701406-10
- 701411-09
- 701428-01
- 701456-03
- 701901-05
- 725001
- 782006

DESIGN DESIGNATION

ADT 18,500
 MU 17.4%
 SU 3.4%



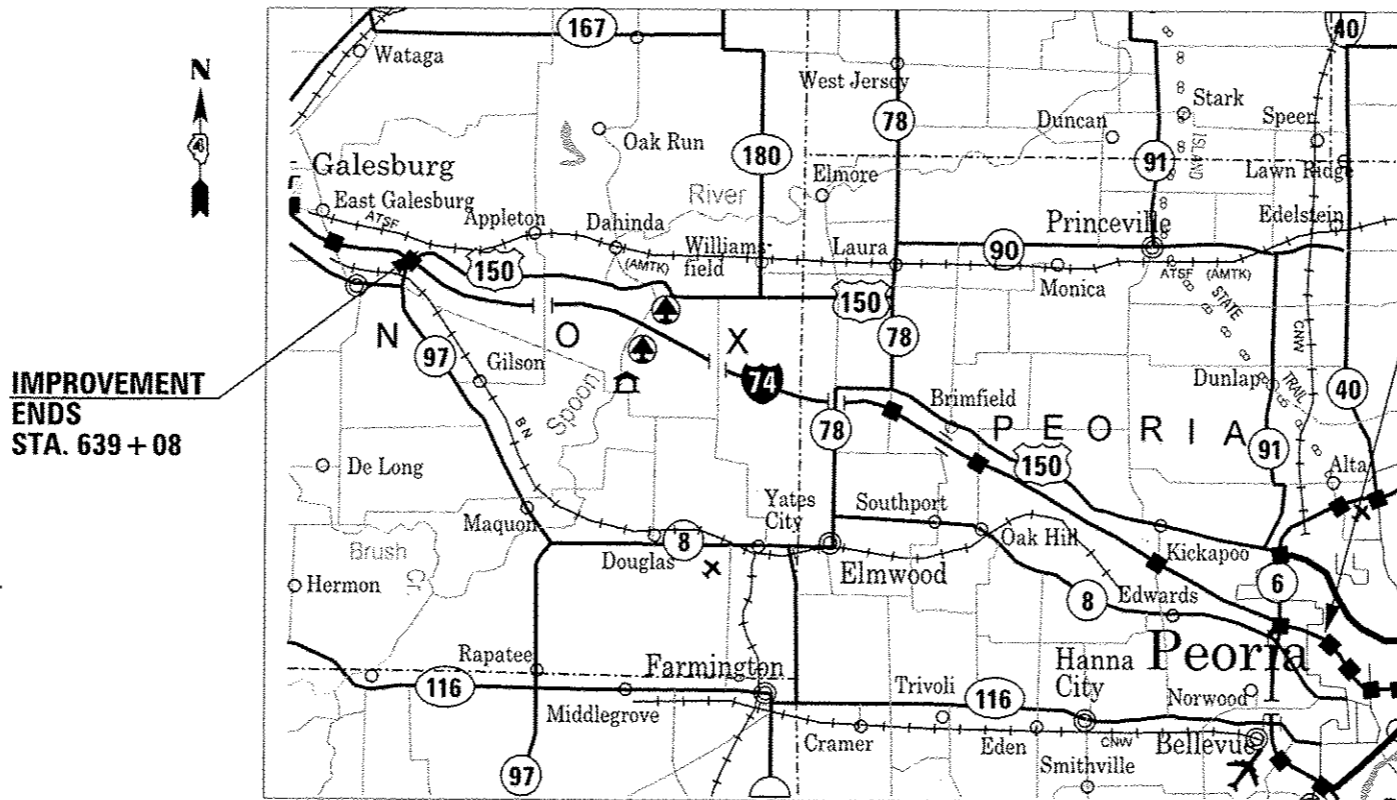
FULL SIZE PLANS HAVE BEEN PREPARED USING STANDARD ENGINEERING SCALES. REDUCED SIZED PLANS WILL NOT CONFORM TO STANDARD SCALES. IN MAKING MEASUREMENTS ON REDUCED PLANS, THE ABOVE SCALES MAY BE USED.

J.U.L.I.E.
 JOINT UTILITY LOCATION INFORMATION FOR EXCAVATION
 1-800-892-0123
 OR 811

PROJECT ENGINEER CHRIS MAUSHARD 309-671-3453
 PROJECT MANAGER RAYMOND SAMARA/SOBHI LABABIDI 309-671-3460
 CATALOG NO. 035367-00D
 CONTRACT NO. 68D03

STATE OF ILLINOIS
 DEPARTMENT OF TRANSPORTATION
 DIVISION OF HIGHWAYS
**PROPOSED
 HIGHWAY PLANS**

F.A.I. ROUTE 74 (I-74)
 SECTION 48(27-30)GR;72-(1,3-7)GR
 SAFETY PROJECT
 PEORIA, KNOX COUNTY
 C-94-030-16
 ACHSIP-0074(315)



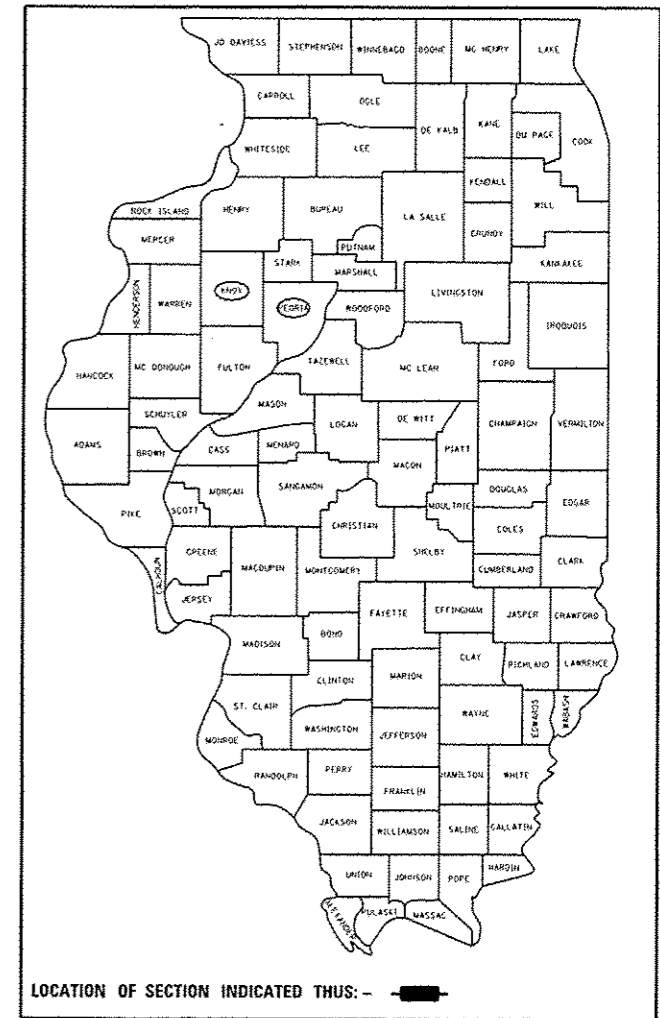
IMPROVEMENT ENDS
 STA. 639 + 08

IMPROVEMENT BEGINS
 STA. 380 + 93

GROSS LENGTH = 36 MILE
 NET LENGTH = 27 MILE

F.A.I. RTE.	SECTION	COUNTY	TOTAL SHEETS	SHEET NO.
74	48(27-30)GR;72-(1,3-7)GR	KNOX	23	1
FED. ROAD DIST. NO.		ILLINOIS	CONTRACT NO. 68D03	

D-94-012-16



LOCATION OF SECTION INDICATED THUS: —

DESCRIPTION:
 REPLACE GUARDRAIL AND END TERMINALS ALONG I-74 FROM EAST OF IL 97 TO WEST OF STERLING AVENUE IN PEORIA.

STATE OF ILLINOIS
 DEPARTMENT OF TRANSPORTATION
 DIVISION OF HIGHWAYS

SUBMITTED March 17, 2016
Tom C. James
 REGION THREE ENGINEER

Maureen M. Addis P.E.
 ENGINEER OF DESIGN AND ENVIRONMENT

Maureen M. Addis
 DIRECTOR OF PROGRAM DEVELOPMENT

PRINTED BY THE AUTHORITY
 OF THE STATE OF ILLINOIS

COMMITMENTS

Commitments are not to be altered without the written approval of all parties to which the commitment was made. There have been no commitments made for this project

ENVIRONMENTAL REVIEWS

Prior to the use of any proposed borrow areas, use areas (temporary access roads, detours, run-arounds, etc.) and/or waste areas, the Contractor shall file the required environmental resource request surveys according to Section 107.22 of the Standard Specifications. These surveys are required in order for the Department to conduct cultural and biological resource surveys for the proposed site.

The required environmental resource documentation shall include the following:

- * BDE Form 2289 (Cultural and Natural Resources Review of Borrow Areas)
- * BDE Form 2290 (Waste/Use Area Review)
- * A location map showing the size limits and location of the use area
- * Color photographs depicting the use area
- * Borrow Area Entry Agreement form * D4 PI0101

Prior to any waste materials being removed from the construction site the required environmental resource surveys shall be obtained and filed by the Contractor. Excess waste products removed from the construction site shall be disposed of as required in Section 202.03 of the Standard Specifications.

Any protruding metal bars shall be removed prior to the disposal of broken concrete at approved disposal sites.

Please note that a minimum of four weeks shall be allowed for the District to obtain the required waste site environmental clearances and six weeks for the required borrow site environmental clearances.

JOB SPECIFIC NOTE:

At proposed guardrail locations; the removal of existing aggregate shall be included in the unit bid price of "GUARDRAIL AGGREGATE EROSION CONTROL".

FILE NAME : 0468003-shr-plan.dgn	USER NAME : lnbobidiam	DESIGNED -	REVISED -	STATE OF ILLINOIS DEPARTMENT OF TRANSPORTATION	GENERAL NOTES				F.A.I. RTE.	SECTION	COUNTY	TOTAL SHEETS	SHEET NO.
	PLOT SCALE * 200.0000' / in.	DRAWN -	REVISED -						74	48127-30GR;72-11.3-71GR	PEORIA/KNOX	23	2
Default	PLOT DATE * 3/18/2016	CHECKED -	REVISED -		SCALE:	SHEET	OF	SHEETS	STA.	TO STA.	CONTRACT NO. 68D03		
		DATE -	REVISED -								ILLINOIS FED. AID PROJECT		

CODE NO.	ITEM	UNIT	TOTAL QUANTITY	CONSTRUCTION CODE	
				PEORIA COUNTY	KNOX COUNTY
				90% FEDERAL	90% FEDERAL
				10% STATE	10% STATE
				0021	0021
50102400	CONCRETE REMOVAL	CU YD	35.6	28.9	6.7
50300225	CONCRETE STRUCTURES	CU YD	147.2	120.6	26.6
50800205	REINFORCEMENT BARS, EPOXY COATED	POUND	14850	12650	2200
63000001	STEEL PLATE BEAM GUARD RAIL, TYPE A, 6 FOOT POSTS	FOOT	27925	24412.5	3512.5
63000003	STEEL PLATE BEAM GUARD RAIL, TYPE A, 9 FOOT POSTS	FOOT	19325	19325	
63100045	TRAFFIC BARRIER TERMINAL, TYPE 2	EACH	55	45	10
63100085	TRAFFIC BARRIER TERMINAL, TYPE 6	EACH	24	19	5
63100089	TRAFFIC BARRIER TERMINAL, TYPE 6B	EACH	20	14	6
63100167	TRAFFIC BARRIER TERMINAL, TYPE 1 (SPECIAL) TANGENT	EACH	77	66	11
63200310	GUARDRAIL REMOVAL	FOOT	54044	49161	4883
67100100	MOBILIZATION	L SUM	1	0.7	0.3
70100420	TRAFFIC CONTROL AND PROTECTION, STANDARD 701411	EACH	10	10	
70100700	TRAFFIC CONTROL AND PROTECTION, STANDARD 701406	L SUM	1	0.7	0.3
70100800	TRAFFIC CONTROL AND PROTECTION, STANDARD 701401	L SUM	1	0.7	0.3

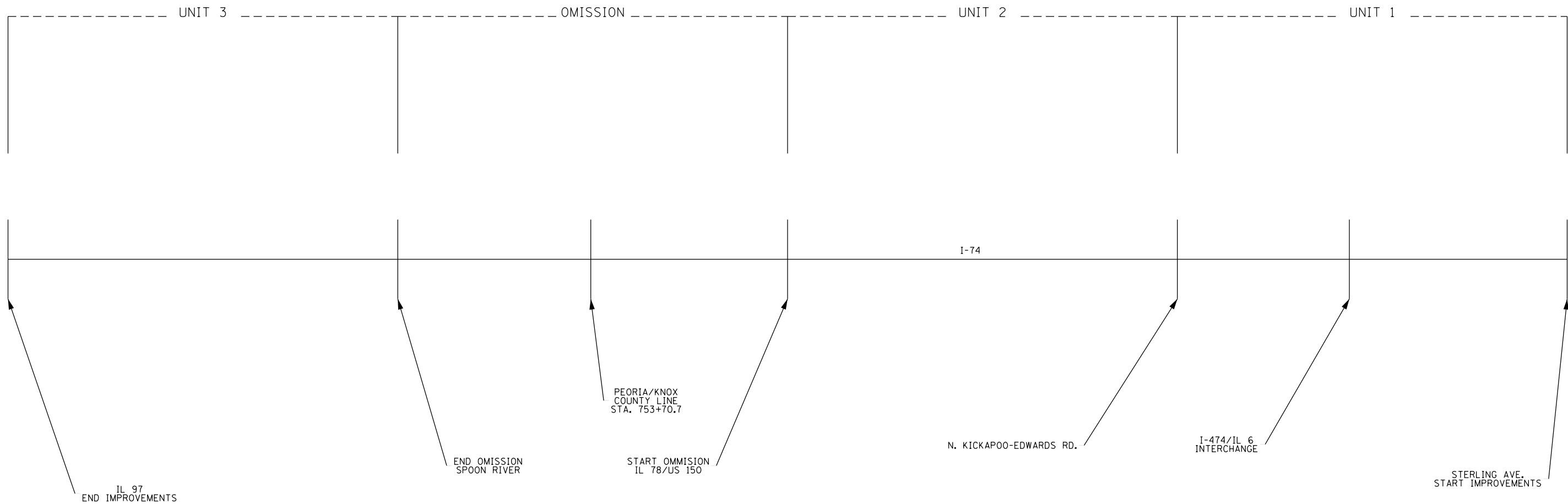
14

FILE NAME = 0468003-whs-pln.dgn	USER NAME = lebabidjan	DESIGNED -	REVISED -
		DRAWN -	REVISED -
		CHECKED -	REVISED -
		DATE -	REVISED -

**STATE OF ILLINOIS
DEPARTMENT OF TRANSPORTATION**

SUMMARY OF QUANTITIES

F.A.I. RTE.	SECTION	COUNTY	TOTAL SHEETS	SHEET NO.
74	48(27-30)GR;72-11,3-7)GR	PEORIA/KNOX	23	3
			CONTRACT NO. 68003	
ILLINOIS FED. AID PROJECT				



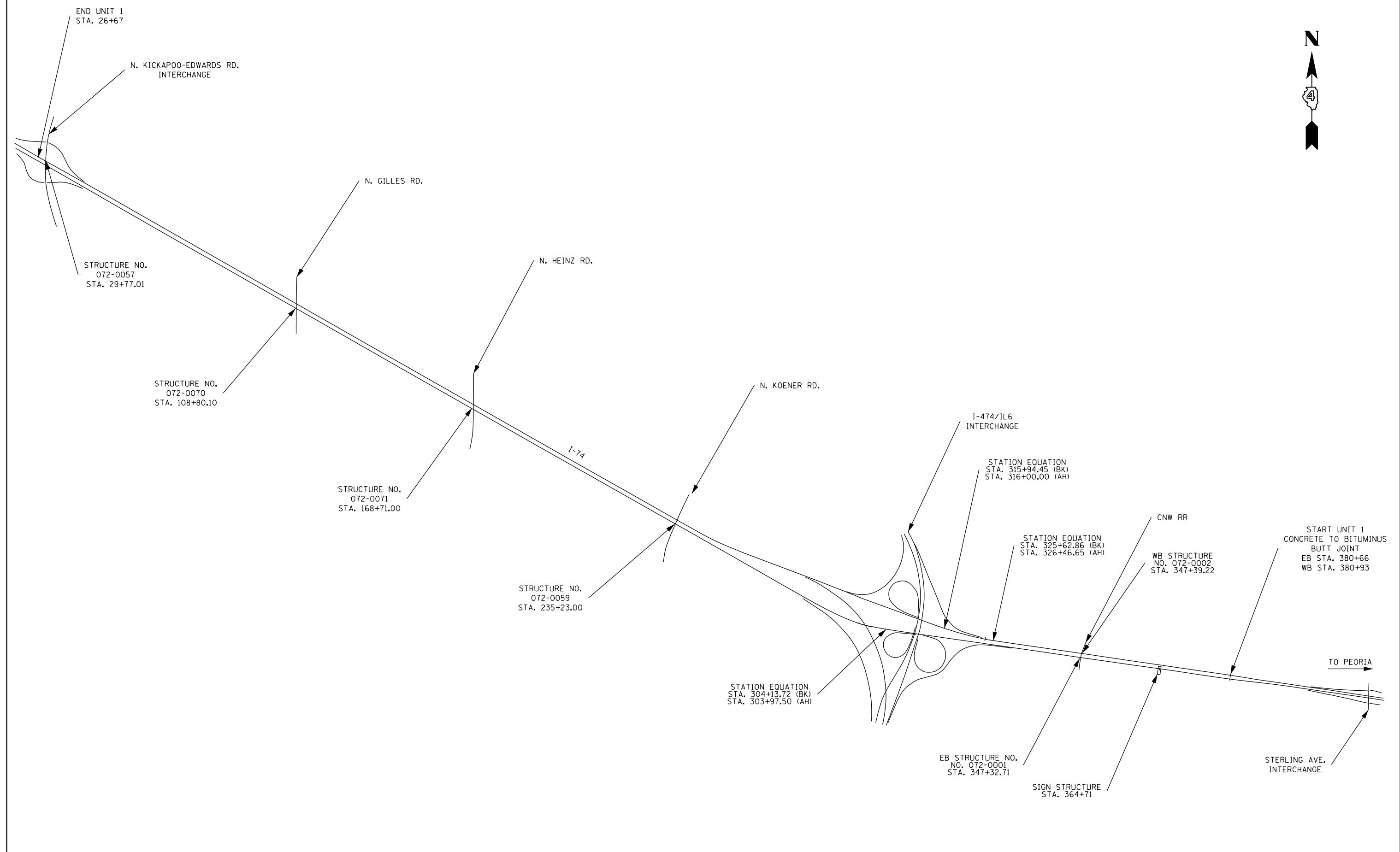
FILE NAME = D468003-sht-plan.dgn	USER NAME = lababidism	DESIGNED -	REVISED -
Default	PLOT SCALE = 200.0000' / in.	DRAWN -	REVISED -
	PLOT DATE = 3/18/2016	CHECKED -	REVISED -
		DATE -	REVISED -

**STATE OF ILLINOIS
DEPARTMENT OF TRANSPORTATION**

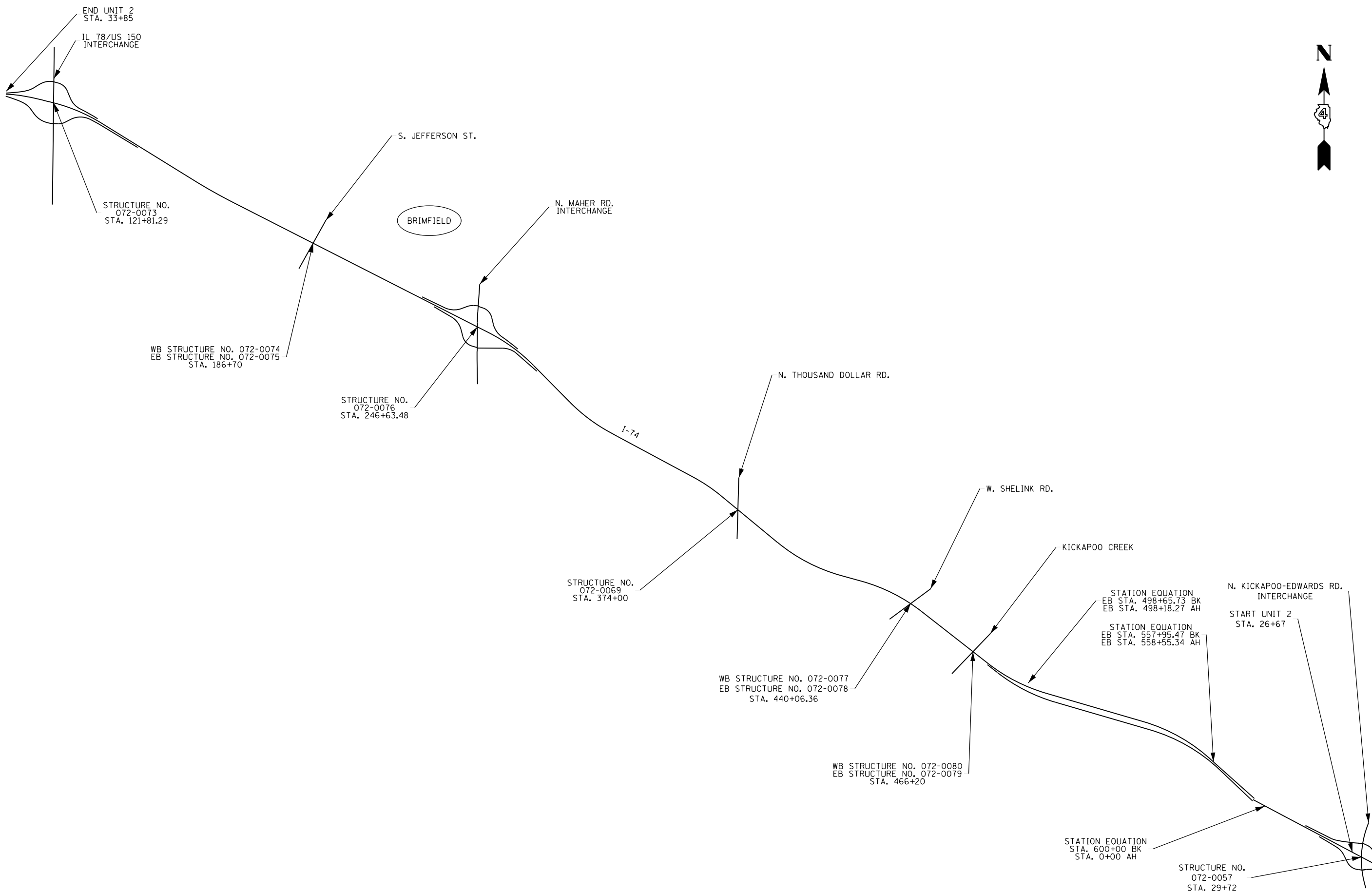
LINE DIAGRAM

SCALE: SHEET OF SHEETS STA. TO STA.

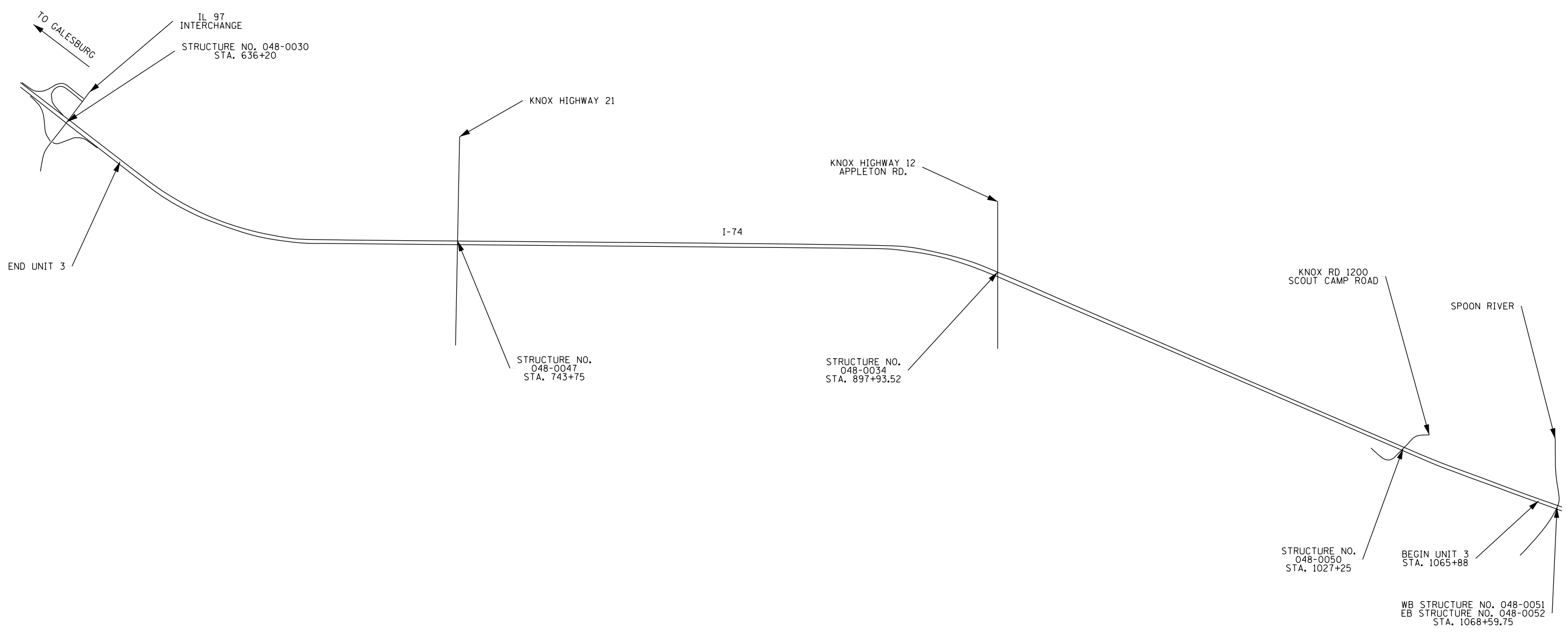
F.A.I. RTE.	SECTION	COUNTY	TOTAL SHEETS	SHEET NO.
74	48(27-30)GR;72-(1,3-7)GR	PEORIA/KNOX	23	5
ILLINOIS FED. AID PROJECT			CONTRACT NO. 68D03	



FILE NAME = D468003-sht-plan.dgn	USER NAME = labbidism	DESIGNED -	REVISED -	STATE OF ILLINOIS DEPARTMENT OF TRANSPORTATION	LINE DIAGRAM - UNIT 1 STERLING AVE. to N. KICKAPOO-EDWARDS RD.				F.A.I. RTE.	SECTION	COUNTY	TOTAL SHEETS	SHEET NO.
	PLOT SCALE = 200.0000' / in.	CHECKED -	REVISED -		74	48(27-30)GR;72-(1,3-7)GR	PEORIA/KNOX	23	6				
Default	PLOT DATE = 3/18/2016	DATE -	REVISED -	SCALE:	SHEET	OF	SHEETS	STA.	TO	STA.	ILLINOIS FED. AID PROJECT CONTRACT NO. 68D03		



FILE NAME = D468003-sht-plan.dgn	USER NAME = lababidism	DESIGNED -	REVISED -	STATE OF ILLINOIS DEPARTMENT OF TRANSPORTATION	LINE DIAGRAM - UNIT 2 N. KICKAPOO-EDWARDS RD. to IL 78/US 150			F.A.I. RTE.	SECTION	COUNTY	TOTAL SHEETS	SHEET NO.
	PLOT SCALE = 200.0000' / in.	CHECKED -	REVISED -		74	48(27-30)GR;72-(1,3-7)GR	PEORIA/KNOX	23	7			
Default	PLOT DATE = 3/18/2016	DATE -	REVISED -	SCALE:	SHEET	OF	SHEETS	STA.	TO	STA.	CONTRACT NO. 68D03 ILLINOIS FED. AID PROJECT	



FILE NAME = D468003-sht-plan.dgn	USER NAME = lababidism	DESIGNED -	REVISED -
		DRAWN -	REVISED -
	PLOT SCALE = 200.0000' / in.	CHECKED -	REVISED -
Default	PLOT DATE = 3/18/2016	DATE -	REVISED -

**STATE OF ILLINOIS
DEPARTMENT OF TRANSPORTATION**

**LINE DIAGRAM - UNIT 3
SPOON RIVER to IL 97**

SCALE: SHEET OF SHEETS STA. TO STA.

F.A.I. RTE.	SECTION	COUNTY	TOTAL SHEETS	SHEET NO.
74	48(27-30)GR;72-(1,3-7)GR	KNOX	23	8
CONTRACT NO. 68D03			ILLINOIS FED. AID PROJECT	

UNIT 1: STERLING AVE. to N. KICKAPOO-EDWARDS RD.					
LOCATION			SN	GUARDRAIL REMOVAL	
STA	-	STA		FOOT	
I-74 WESTBOUND LANES					
RT	375+82	-	366+30		952
RT	346+55	-	332+69	072-0002	1386
LT	346+51	-	346+25	072-0002	26
LT	327+83	-	324+34		349
RT	327+83	-	324+34		349
RT	297+10	-	288+84		826
RT	284+99	-	278+12		687
RT	264+43	-	251+84	072-0059	1259
RT	232+21	-	219+66		1255
RT	200+62	-	187+96		1266
RT	181+95		168+44	072-0071	1351
RT	157+47	-	147+10		1037
RT	127+49	-	119+62		787
RT	111+95	-	108+59	072-0070	336
RT	102+60	-	95+54		706
RT	82+00	-	73+85		815
RT	34+02	-	29+57	072-0057	445
I-74 EASTBOUND LANES					
RT	26+58	-	29+91	072-0057	333
RT	69+64	-	80+88		1124
RT	92+34	-	99+11		677
RT	105+67	-	109+03	072-0070	336
RT	117+47	-	128+61		1114
RT	132+75	-	137+90		515
RT	146+51	-	162+15		1564
LT	164+96	-	168+60	072-0071	364
RT	165+33	-	168+90	072-0071	357
RT	171+98	-	178+48		650
RT	184+89	-	197+87		1298
RT	211+27	-	228+30		1703
RT	231+49	-	245+24	072-0059	1375
LT	240+26	-	243+93		367
RT	277+55	-	284+30		675
LT	278+36	-	282+44		408
LT	286+20	-	296+40		1020
RT	291+45	-	294+27		282
RT	330+65	-	346+23	072-0001	1558
RT	360+12	-	365+15		503
RT	370+86	-	371+77		91
UNIT 1 TOTAL					30146

UNIT 2: N. KICKAPOO-EDWARDS RD. to RT 78, US 150					
LOCATION			SN	GUARDRAIL REMOVAL	
STA	-	STA		FOOT	
I-74 WESTBOUND LANES					
LT	518+03	-	507+39		1064
RT	519+87	-	510+74		913
RT	495+51	-	489+74		577
RT	487+48	-	479+20		828
LT	469+43	-	467+80	072-0080	163
RT	471+00	-	467+70	072-0080	330
LT	443+39	-	440+71	072-0077	268
RT	450+05	-	440+70	072-0077	935
RT	424+00	-	414+14		986
RT	391+54	-	385+53		601
RT	374+87	-	373+50	072-0069	137
RT	227+99	-	226+51	072-0076	148
RT	206+15	-	187+94	072-0074	1821
RT	185+09	-	180+16	072-0074	493
LT	191+06	-	187+94	072-0074	312
I-74 EASTBOUND LANES					
RT	173+12	-	185+16	072-0075	1204
LT	182+10	-	185+16	072-0075	306
RT	188+03	-	199+51	072-0075	1148
RT	244+86	-	246+69	072-0076	183
RT	372+75	-	374+45	072-0069	170
RT	407+86	-	420+37		1251
RT	431+73	-	439+05	072-0078	732
LT	435+05	-	439+10	072-0078	405
RT	440+22	-	448+35	072-0078	813
RT	459+59	-	464+62	072-0079	503
LT	462+80	-	464+62	072-0079	182
RT	473+17	-	484+52		1135
RT	486+32	-	492+34		602
RT	503+07	-	511+12		805
UNIT 2 TOTAL					19015
UNIT 1 TOTAL					30146
PEORIA COUNTY TOTAL					49161

UNIT 3: SPOON RIVER to IL 97					
LOCATION			SN	GUARDRAIL REMOVAL	
STA	-	STA		FOOT	
I-74 WESTBOUND LANES					
RT	1031+80	-	1027+70	048-0050	410
RT	901+43	-	897+55	048-0034	388
RT	864+29	-	858+91		538
RT	795+21	-	789+80		541
RT	777+35	-	773+32		403
RT	747+37	-	743+30	048-0047	407
RT	639+08	-	636+25	048-0030	283
I-74 EASTBOUND LANES					
RT	740+47	-	744+24	048-0047	377
RT	788+63	-	792+53		390
RT	857+67	-	862+33		466
RT	894+67	-	898+40	048-0034	373
RT	1023+94	-	1027+01	048-0050	307
UNIT 3 TOTAL					4883
KNOX COUNTY TOTAL					4883

UNIT 1: STERLING AVE. to N. KICKAPOO-EDWARDS RD. (PEORIA COUNTY)

	LOCATION **			SN	TRAFFIC BARRIER TERMINAL TYPE 1 SPECIAL TANGENT	SPBGR* TYPE A 6 FT POSTS	SPBGR* TYPE A 9 FT POSTS	TRAFFIC BARRIER TERMINAL TYPE 6	TRAFFIC BARRIER TERMINAL TYPE 6B	TRAFFIC BARRIER TERMINAL TYPE 2	GUARDRAIL REFLECTORS, TYPE A	TERMINAL MARKER-DIRECT APPLIED	EROSION CONTROL CURB REMOVAL	GUARDRAIL AGGREGATE EROSION CONTROL
	STA	-	STA											
I-74 WESTBOUND LANES														
RT	375+30	-	366+30		1	850				1	11	1	-	126.0
LT	368+78	-	364+90		1	337.5				1	4	1		54.3
RT	346+03	-	332+69	072-0002			1275	1		1	0		1102	186.8
LT	346+51	-	346+25	072-0002				1		1	0		-	3.6
LT	327+34	-	324+34		1	250				1	3	1	-	42.0
RT	327+34	-	324+34		1	250				1	3	1	-	42.0
RT	296+59	-	288+84		1		725			1	0	1	743	108.5
RT	284+49	-	278+12		1	587.5				1	7	1	-	89.3
RT	263+93	-	251+84	072-0059	1	1125			1		14	1	636	169.3
RT	231+79	-	219+66		1		1162.5			1	0	1	840	169.8
RT	200+09	-	187+96		1	1162.5				1	15	1	-	169.8
RT	181+53		168+44	072-0071	1	1225			1		15	1	669	183.3
RT	156+98	-	147+10		1	937.5				1	12	1	863	138.3
RT	127+00	-	119+62		1	687.5				1	9	1	-	103.3
RT	111+43	-	108+59	072-0070	1	200			1		3	1	-	39.8
RT	102+17	-	95+54		1	612.5				1	8	1	458	92.8
RT	81+48	-	73+85		1	712.5				1	9	1	427	106.8
RT	32+69	-	29+57	072-0057	1	312.5			1		4	1	-	55.5
I-74 EASTBOUND LANES														
RT	27+07	-	29+91	072-0057	1	200			1		3	1	-	39.8
RT	70+13	-	80+88		1	1025				1	13	1	-	150.5
RT	92+86	-	99+11		1		575			1	0	1	-	87.5
RT	106+19	-	109+03	072-0070	1	200			1		3	1	-	39.8
RT	117+98	-	128+61		1		1012.5			1	0	1	960	148.8
RT	133+27	-	137+90		1	412.5				1	5	1	-	64.8
RT	147+02	-	162+15		1		1462.5			1	0	1	-	211.8
LT	165+47	-	168+60	072-0071	1	262.5				1	3	1	-	43.8
RT	164+68	-	168+90	072-0071	1	362.5			1		5	1	-	59.0
RT	172+48	-	178+48		1		550			1	0	1	407	84.0
RT	185+37	-	197+87		1		1200			1	0	1	1014	175.0
RT	211+80	-	228+30		1		1600			1	0	1	1422	231.0
RT	231+93	-	245+24	072-0059	1		1187.5	1	1	1	0	1	656	173.3
LT	240+68	-	243+93		1	275				1	3	1	-	45.5
RT	278+05	-	284+30		1	575				1	7	1	351	87.5
LT	278+81	-	282+44		1	312.5				1	4	1	-	50.8
LT	286+65	-	296+40		1		925			1	0	1	-	136.5
RT	291+89	-	294+27		1	187.5				1	2	1	-	33.3
RT	331+14	-	346+23	072-0001	1		1425	1			0	1	-	211.3
RT	360+65	-	365+15		1	400				1	5	1		63.0
LT	362+02	-	365+15		1	262.5				1	3	1		43.8
RT	370+77	-	371+77		1	50				1	1	1		14.0
UNIT 1 TOTAL					38	13775	13100	4	8	32	172	38	10548	4075.0

* INSTALL AT 32" HEIGHT
 ** LEFT & RIGHT IS RELATED TO DIRECTION OF TRAFFIC

FILE NAME = D468003-shr-plan.dgn	USER NAME = lababidism	DESIGNED -	REVISED -	STATE OF ILLINOIS DEPARTMENT OF TRANSPORTATION	SCHEDULE OF QUANTITIES				F.A.I. RTE.	SECTION	COUNTY	TOTAL SHEETS	SHEET NO.
Default	PLOT SCALE = 200.0000' / in.	DRAWN -	REVISED -						74	48(27-30)GR;72-(1,3-7)GR	PEORIA/KNOX	23	10
	PLOT DATE = 3/18/2016	CHECKED -	REVISED -		SCALE: SHEET OF SHEETS STA. TO STA.				CONTRACT NO. 68D03				
		DATE -	REVISED -		ILLINOIS FED. AID PROJECT								

UNIT 2: N. KICKAPOO-EDWARDS RD. to IL 78/US 150 (PEORIA COUNTY)

LOCATION**	SN	TRAFFIC BARRIER TERMINAL TYPE 1 SPECIAL TANGENT	SPBGR* TYPE A 6 FT POSTS	SPBGR* TYPE A 9 FT POSTS	TRAFFIC BARRIER TERMINAL TYPE 6	TRAFFIC BARRIER TERMINAL TYPE 6B	TRAFFIC BARRIER TERMINAL TYPE 2	GUARDRAIL REFLECTORS, TYPE A	TERMINAL MARKER-DIRECT APPLIED	EROSION CONTROL CURB REMOVAL	GUARDRAIL AGGREGATE EROSION CONTROL			
												STA	-	STA
I-74 WESTBOUND LANES														
LT	517+52	-	507+39		1	962.5			1	12	1	141.8		
RT	519+37	-	510+74		1	812.5			1	10	1	120.8		
RT	494+99	-	489+74		1	475			1	6	1	73.5		
RT	486+95	-	479+20		1	725			1	9	1	108.5		
LT	470+64	-	467+80	072-0080	1	200				3	1	39.8		
RT	470+04	-	467+70	072-0080	1	150				2	1	32.8		
LT	443+55	-	440+71	072-0077	1	200				3	1	39.8		
RT	449+54	-	440+70	072-0077	1	800				10	1	123.8		
RT	423+52	-	414+14		1		887.5			0	1	131.3		
RT	391+53	-	385+53		1	550				7	1	84.0		
RT	375+84	-	373+50	072-0069	1	150				2	1	32.8		
RT	228+85	-	226+51	072-0076	1	150				2	1	32.8		
RT	205+65	-	187+94	072-0074	1		1687.5	1		0	1	248.0		
RT	184+62	-	180+16	072-0074			387.5	1	1	0		62.5		
LT	190+78	-	187+94	072-0074	1	200					1	39.8		
RT	69+31	-	66+97	072-0073	1	150				3	1	32.8		
I-74 EASTBOUND LANES														
RT	64+44	-	66+78	072-0073	1	150				2	1	32.8		
RT	173+57	-	185+16	072-0075	1		1075	1		0	1	162.3		
LT	182+32	-	185+16	072-0075	1	200				3	1	39.8		
RT	188+54	-	199+51	072-0075			1037.5	1	1	0		153.5		
RT	244+35	-	246+69	072-0076	1	150				2	1	32.8		
RT	372+11	-	374+45	072-0069	1	150				2	1	32.8		
RT	408+37	-	420+37		1		1150			0	1	168.0		
RT	432+21	-	439+05	072-0078	1	600				8	1	95.8		
LT	435+01	-	439+10	072-0078	1	325				4	1	57.3		
RT	440+63	-	448+35	072-0078		712.5				9		108.0		
RT	460+03	-	464+62	072-0079	1	375				5	1	64.3		
LT	461+78	-	464+62	072-0079	1	200				3	1	39.8		
RT	473+64	-	484+52		1	1037.5				13	1	152.3		
RT	486+84	-	492+34		1	500				6	1	77.0		
RT	503+49	-	511+12		1	712.5				9	1	106.8		
UNIT 2 TOTAL					28	10637.5	6225	15	6	13	131	28	0	2651.4
UNIT 1 TOTAL					38	13775	13100	4	8	32	172	38	10548	4075.0
PEORIA COUNTY TOTAL					66	24412.5	19325	19	14	45	303	66	10548	6726.4

* INSTALL AT 32" HEIGHT
 ** LEFT & RIGHT IS RELATED TO DIRECTION OF TRAFFIC

SCHEDULE OF GUARDRAIL QUANTITIES

UNIT 3: SPOON RIVER to IL 97 (KNOX COUNTY)

	LOCATION**			SN	TRAFFIC BARRIER TERMINAL TYPE 1 SPECIAL TANGENT	SPBGR* TYPE A 6 FT POSTS	SPBGR* TYPE A 9 FT POSTS	TRAFFIC BARRIER TERMINAL TYPE 6	TRAFFIC BARRIER TERMINAL TYPE 6B	TRAFFIC BARRIER TERMINAL TYPE 2	GUARDRAIL REFLECTORS, TYPE A	TERMINAL MARKER-DIRECT APPLIED	EROSION CONTROL CURB REMOVAL	GUARDRAIL AGGREGATE EROSION CONTROL
	STA	-	STA											
I-74 WESTBOUND LANES														
RT	1032+38	-	1027+70	048-0050	1	325		1	1	1	4	1		65.5
RT	901+98	-	897+55	048-0034	1	300		1	1	1	4	1		62.0
RT	863+79	-	858+91		1	437.5				1	5	1	333	68.3
RT	794+68	-	789+80		1	437.5				1	5	1	297	68.3
RT	776+82	-	773+32		1	300				1	4	1		49.0
RT	747+86	-	743+30	048-0047	1	312.5		1	1	1	4	1		63.8
I-74 EASTBOUND LANES														
RT	739+94	-	744+24	048-0047	1	287.5		1	1	1	4	1		60.3
RT	789+15	-	792+53		1	287.5				1	4	1	150	47.3
RT	858+20	-	862+33		1	362.5				1	5	1	186	57.8
RT	894+10	-	898+40	048-0034	1	287.5		1	1	1	4	1		60.3
RT	1024+67	-	1027+01	048-0050	1	175			1		2	1		32.8
UNIT 3 TOTAL					11	3512.5	0	5	6	10	44	11	966	635.1
KNOX COUNTY TOTAL					11	3512.5	0	5	6	10	44	11	966	635.1

* INSTALL AT 32" HEIGHT
 ** LEFT & RIGHT IS RELATED TO DIRECTION OF TRAFFIC

CONCRETE REMOVAL	
LOCATION	
PEORIA COUNTY	
STR. NO.	CUYD
072-0057	3.5
072-0059	3.1
072-0070	3.0
072-0071	4.0
072-0073	5.7
072-0076	9.6
KNOX COUNTY	
STR. NO.	CUYD
048-0030	2.8
048-0049	3.9
PEORIA COUNTY TOTAL	28.9
KNOX COUNTY TOTAL	6.7
TOTAL	35.6

CONCRETE STRUCTURES	
LOCATION	
PEORIA COUNTY	
STR. NO.	CUYD
072-0057	18.0
072-0059	17.5
072-0070	15.0
072-0071	19.5
072-0073	20.3
072-0076	30.3
KNOX COUNTY	
STR. NO.	CUYD
048-0030	10.8
048-0049	15.8
PEORIA COUNTY TOTAL	120.6
KNOX COUNTY TOTAL	26.6
TOTAL	147.2

REINFORCEMENT BARS, EPOXY COATED	
LOCATION	
PEORIA COUNTY	
STR. NO.	POUND
072-0057	2,130
072-0059	1,830
072-0070	1,710
072-0071	2,030
072-0073	1,860
072-0076	3,090
KNOX COUNTY	
STR. NO.	CUYD
048-0030	750
048-0049	1,450
PEORIA COUNTY TOTAL	12,650
KNOX COUNTY TOTAL	2,200
TOTAL	14,850

TRAFFIC CONTROL AND PROTECTION, STANDARD 701401	
LOCATION	L SUM
PEORIA COUNTY	0.7
KNOX COUNTY	0.3
TOTAL	1

TRAFFIC CONTROL AND PROTECTION, STANDARD 701456	
LOCATION	L SUM
PEORIA COUNTY	0.7
KNOX COUNTY	0.3
TOTAL	1

TRAFFIC CONTROL AND PROTECTION, STANDARD 701406	
LOCATION	L SUM
PEORIA COUNTY	0.7
KNOX COUNTY	0.3
TOTAL	1

MOBILIZATION	
LOCATION	L SUM
PEORIA COUNTY	0.7
KNOX COUNTY	0.3
TOTAL	1

TRAFFIC CONTROL AND PROTECTION, STANDARD 701411	
LOCATION	EACH
PEORIA COUNTY	10
KNOX COUNTY	0
TOTAL	10

SPEED DISPLAY TRAILER	
LOCATION	CAL MO
PEORIA COUNTY	3
KNOX COUNTY	2
TOTAL	5

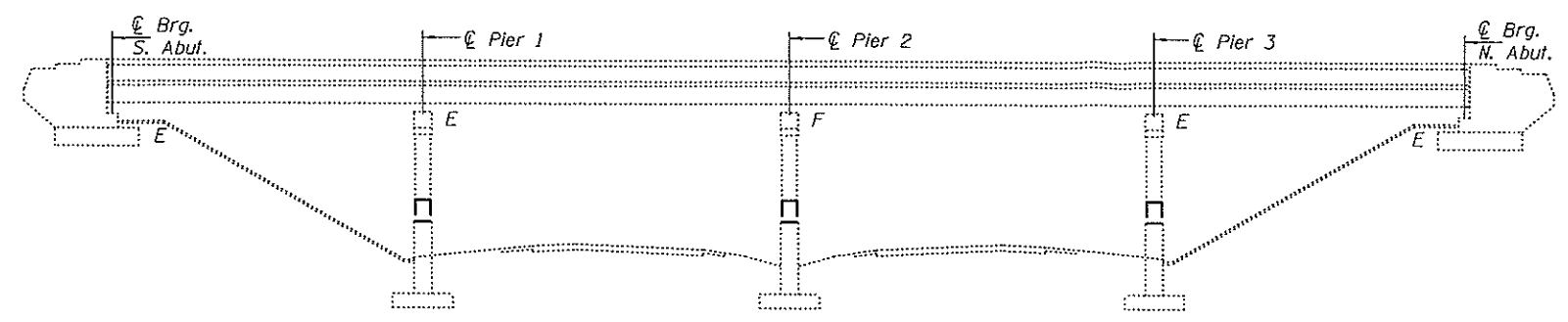
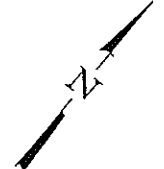
FILE NAME = D468003-sh-t-plan.dgn	USER NAME = lababidism	DESIGNED -	REVISED -
Default	PLOT DATE = 3/18/2016	DRAWN -	REVISED -
		CHECKED -	REVISED -
		DATE -	REVISED -

STATE OF ILLINOIS
DEPARTMENT OF TRANSPORTATION

SCHEDULE OF QUANTITIES

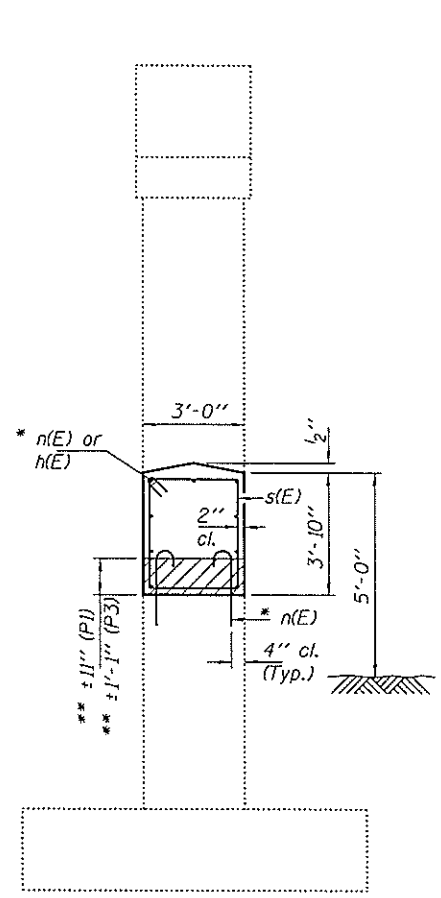
SCALE: SHEET OF SHEETS STA. TO STA.

F.A.I. RTE.	SECTION	COUNTY	TOTAL SHEETS	SHEET NO.
74	48(27-30)GR;72-(1,3-7)GR	PEORIA/KNOX	23	13
CONTRACT NO. 68D03				
ILLINOIS FED. AID PROJECT				



LOCATION SKETCH

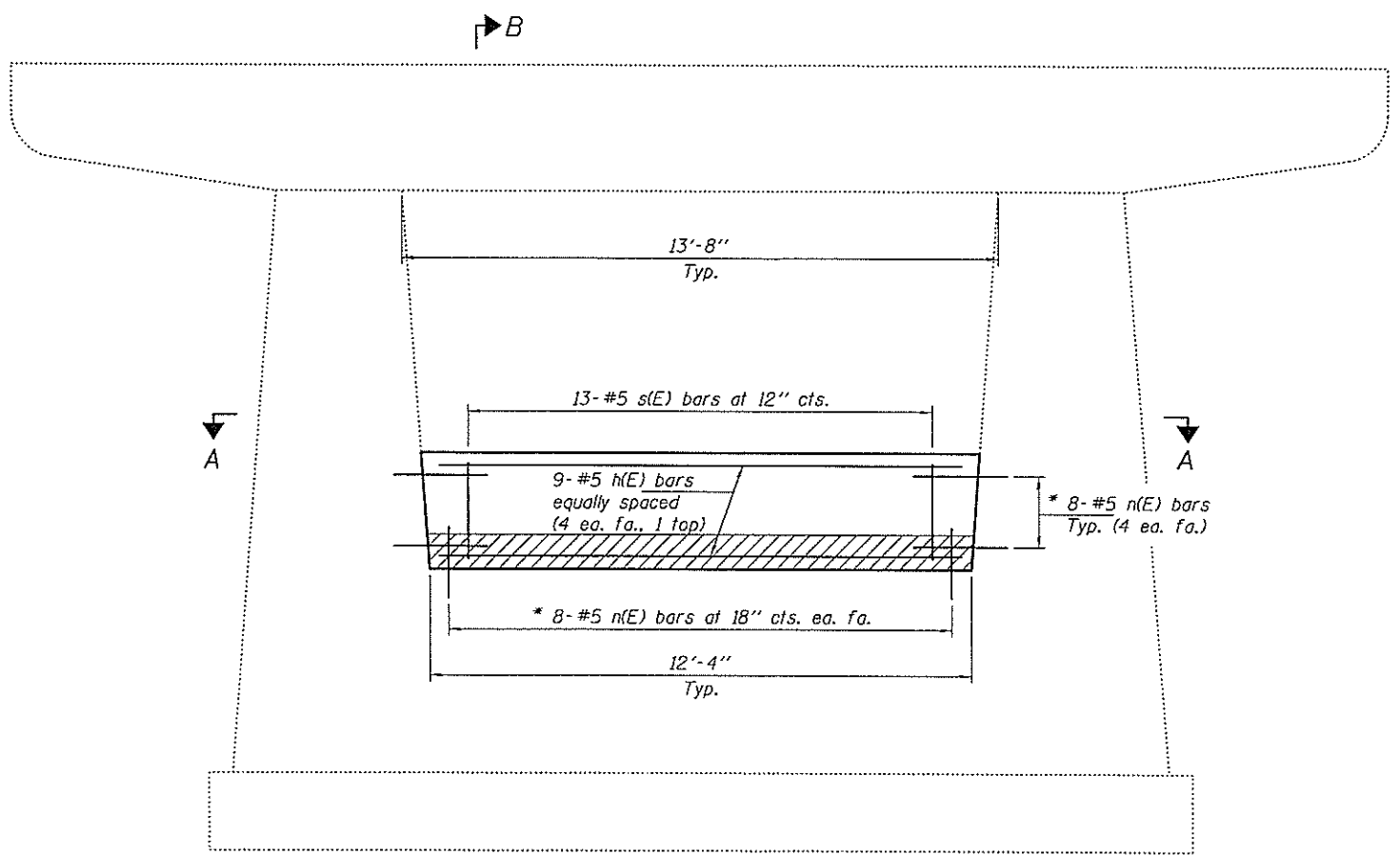
NOTES
 The cost of epoxy grouting threaded rods shall be included with Reinforcement Bars, Epoxy Coated.
 Plan dimensions and details relative to existing plans are subject to nominal construction variations. The Contractor shall field verify existing dimensions and details affecting new construction and make necessary approved adjustments prior to construction or ordering of materials. Such variations shall not be cause for additional compensation for a change in scope of the work, however, the Contractor will be paid for the quantity actually furnished at the unit price bid for the work.
 Reinforcement bars designated (E) shall be epoxy coated.



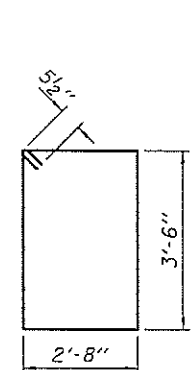
SECTION B-B

** Hatched areas indicate removal. Removal to include the entire previous crashwall extension.

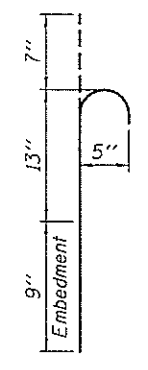
* Epoxy grout n(E) bars in 9" min. holes according to Article 584 of the Standard Specifications.



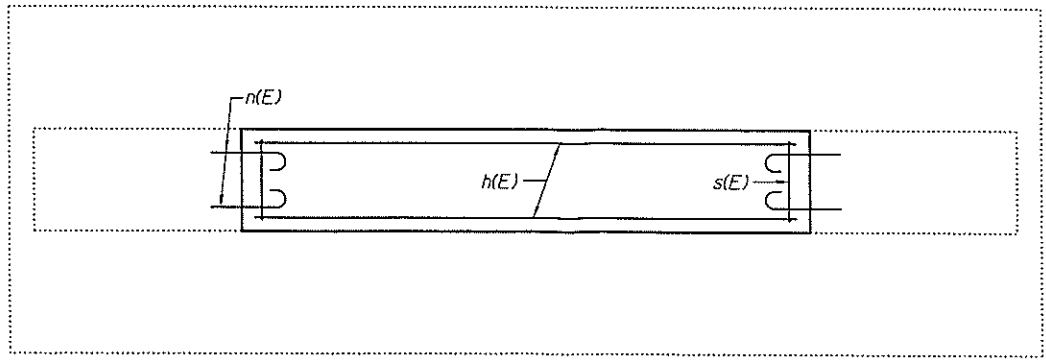
ELEVATION



BAR s(E)



BAR n(E)



SECTION A-A

BILL OF MATERIAL
2 PIERS

Bar	No.	Size	Length	Shape
h(E)	18	#5	12'-0"	—
n(E)	64	#5	2'-5"	U
s(E)	26	#5	13'-3"	□
Concrete Removal			Cu. Yd.	2.8
Concrete Structures			Cu. Yd.	10.8
Reinforcement Bars, Epoxy Coated			Pound	750

PRE-FINAL
 DATE: 2/29/2016

EXPIRES 11-30-2016

DESIGNED
 CHECKED
 DRAWN *baliva*
 CHECKED

PASSED
 ACTING ENGINEER OF BRIDGES AND STRUCTURES

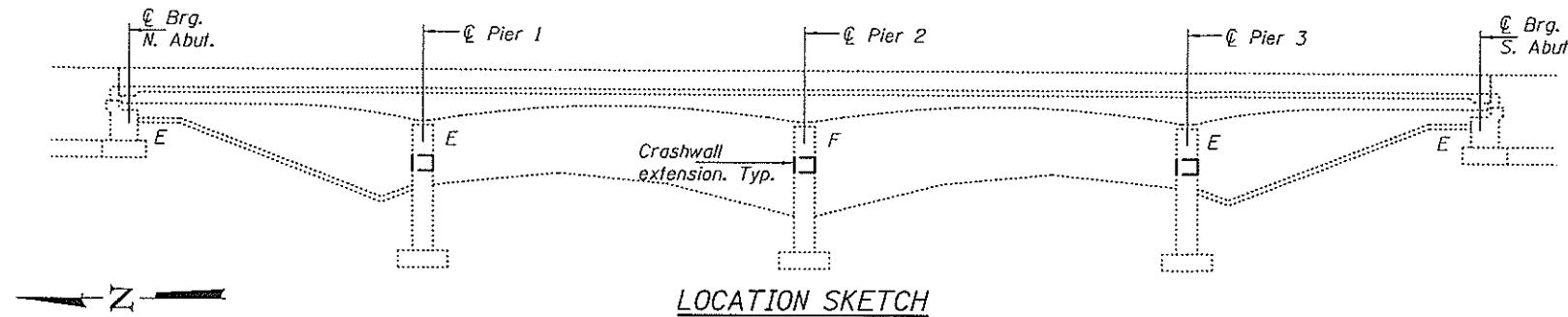
DATE FEBRUARY 29, 2016
 REVISED
 REVISED

STATE OF ILLINOIS
 DEPARTMENT OF TRANSPORTATION

PIERS 1 & 3 CRASHWALL EXTENSION
 SN 048-0030

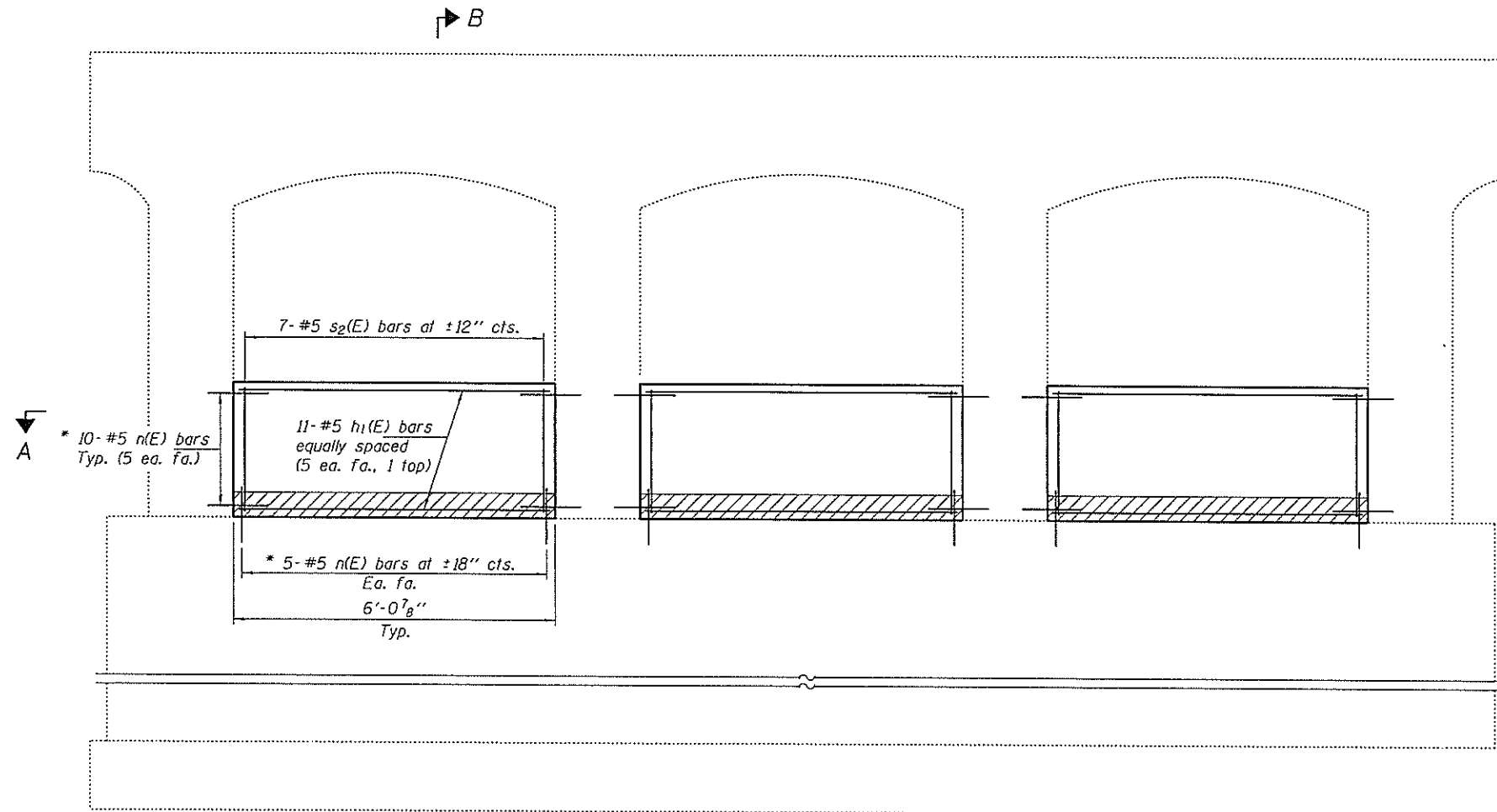
SHEET NO. 1 OF 2 SHEETS

F.A.I. RTE.	SECTION	COUNTY	TOTAL SHEETS	SHEET NO.
74	48(24-30)GR;72-(1,3,7)GR	KNOX	23	14
CONTRACT NO. 68D03			ILLINOIS FED. AID PROJECT	

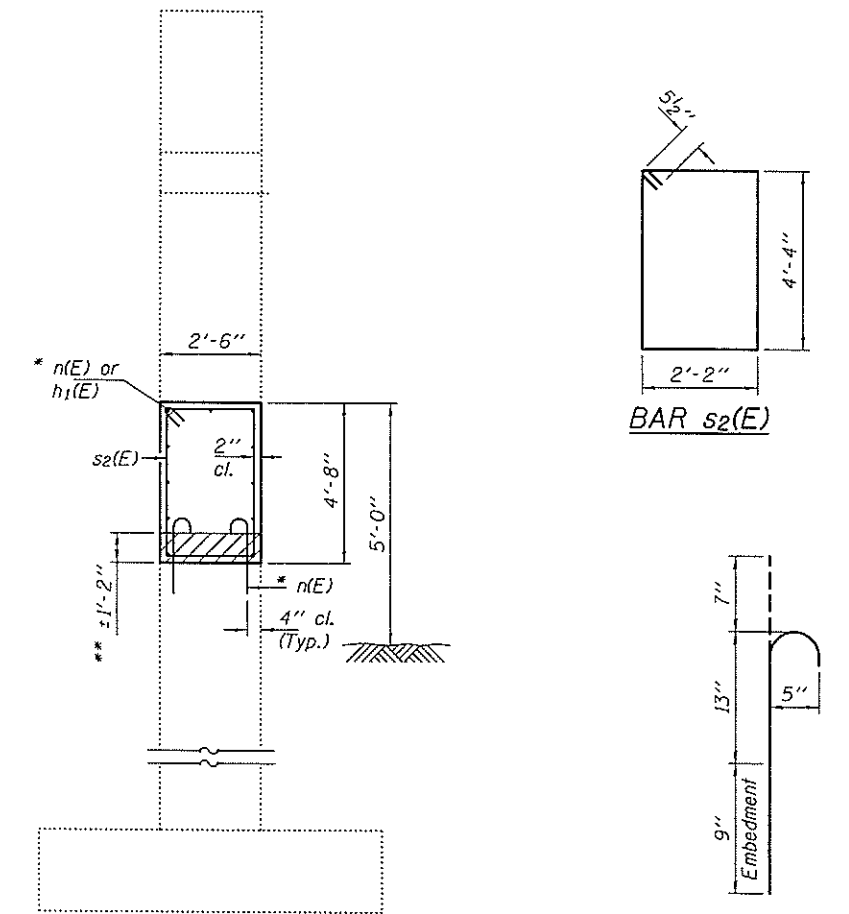


LOCATION SKETCH

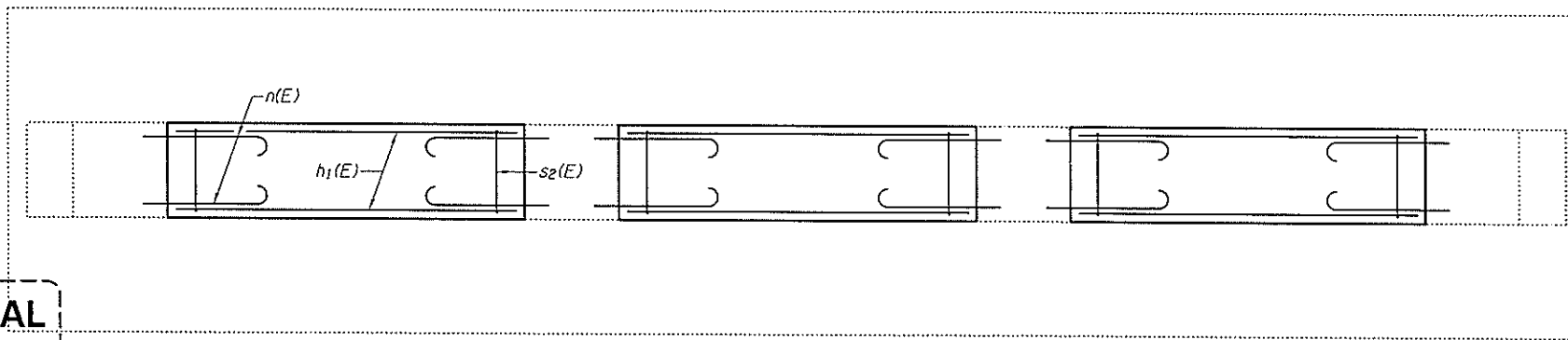
NOTES
 The cost of epoxy grouting threaded rods shall be included with Reinforcement Bars, Epoxy Coated.
 Plan dimensions and details relative to existing plans are subject to nominal construction variations. The Contractor shall field verify existing dimensions and details affecting new construction and make necessary approved adjustments prior to construction or ordering of materials. Such variations shall not be cause for additional compensation for a change in scope of the work, however, the Contractor will be paid for the quantity actually furnished at the unit price bid for the work.
 Reinforcement bars designated (E) shall be epoxy coated.



ELEVATION



SECTION B-B



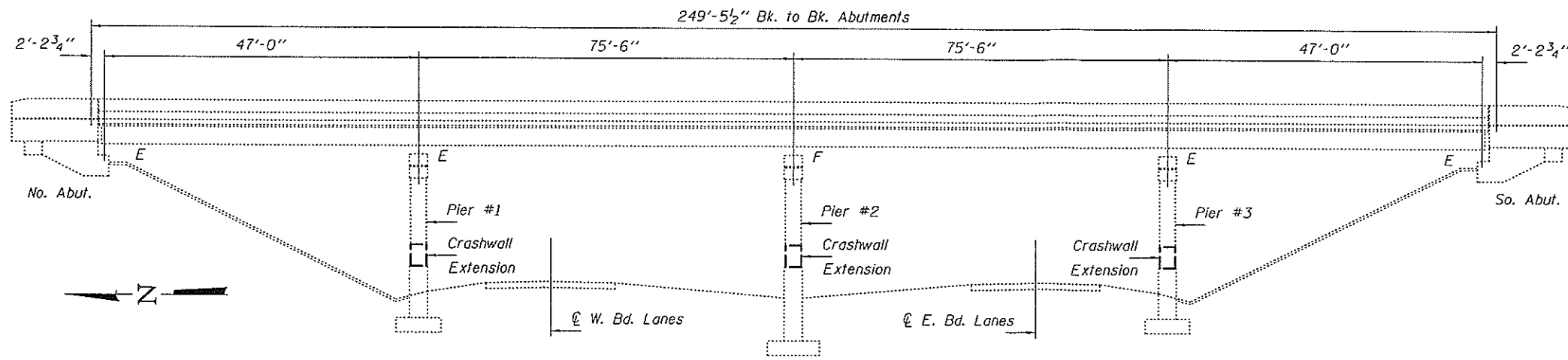
SECTION A-A

**BILL OF MATERIAL
 2 PIERS**

Bar	No.	Size	Length	Shape
h ₁ (E)	66	#5	5'-8"	—
n(E)	180	#5	2'-5"	⊥
s ₂ (E)	42	#5	13'-11"	□
Concrete Removal		Cu. Yd.	3.9	
Concrete Structures		Cu. Yd.	15.8	
Reinforcement Bars, Epoxy Coated		Pound	1450	

** Hatched areas indicate removal. Removal to include the entire previous crashwall extension.
 * Epoxy grout bars in 9" min. holes according to Article 584 of the Standard Specifications.

PRE-FINAL
 DATE: 2/29/2016
 EXPIRES 11-30-2016

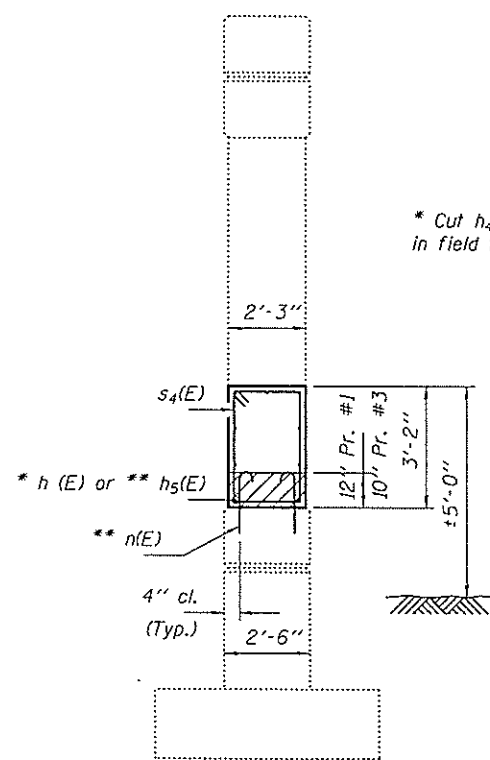


ELEVATION

► B

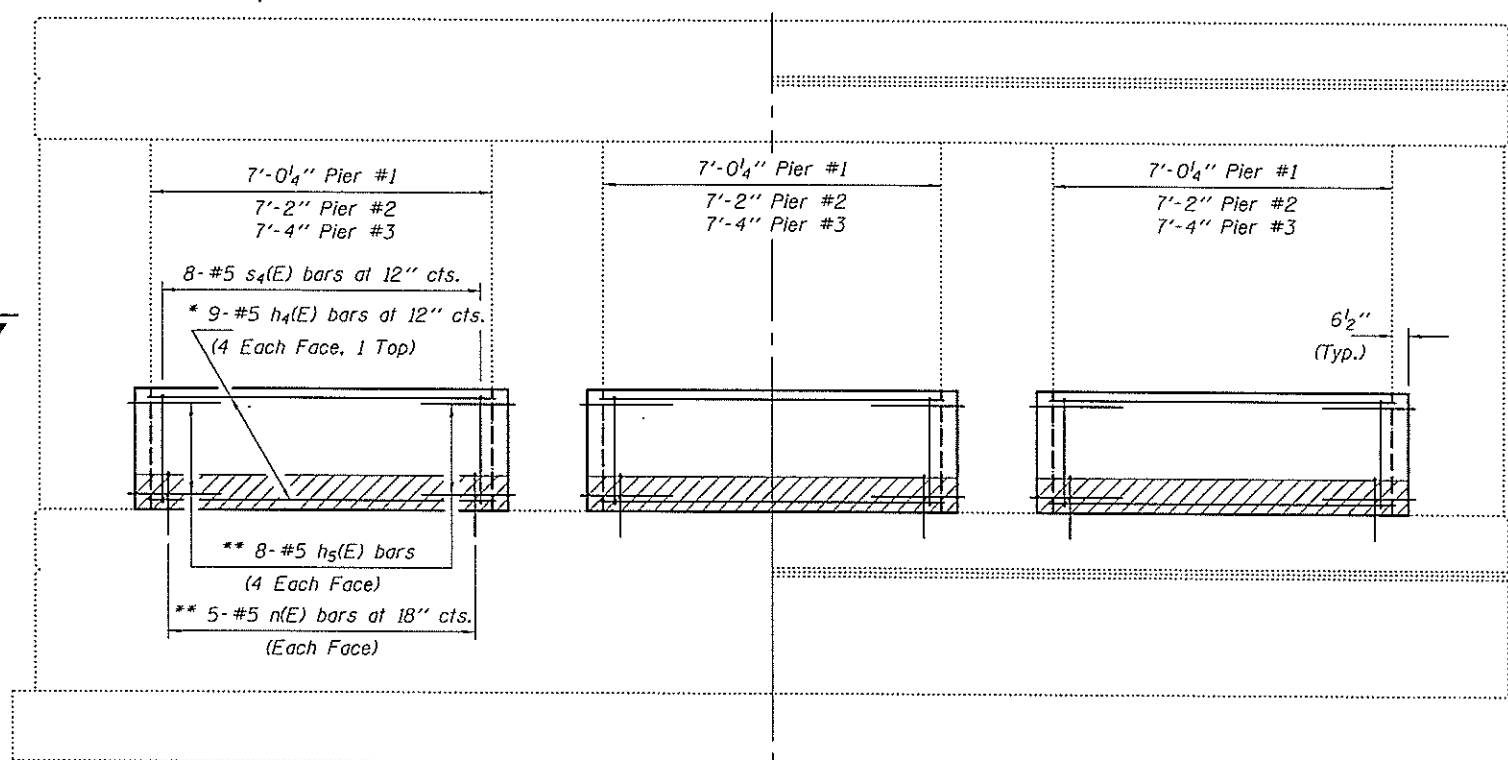
NOTES

The cost of epoxy grouting threaded rods shall be included with Reinforcement Bars, Epoxy Coated.
 Plan dimensions and details relative to existing plans are subject to nominal construction variations. The Contractor shall field verify existing dimensions and details affecting new construction and make necessary approved adjustments prior to construction or ordering of materials. Such variations shall not be cause for additional compensation for a change in scope of the work, however, the Contractor will be paid for the quantity actually furnished at the unit price bid for the work.
 Reinforcement bars designated (E) shall be epoxy coated.



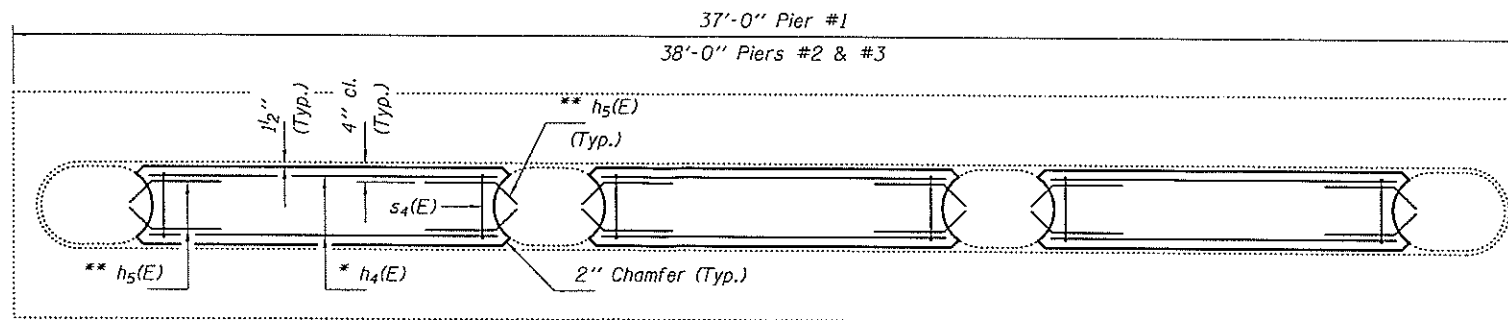
SECTION B-B

* Cut $h_4(E)$ bars in field to fit.



ELEVATION

Hatched areas indicate Concrete Removal, (Piers #1 & #3 only).



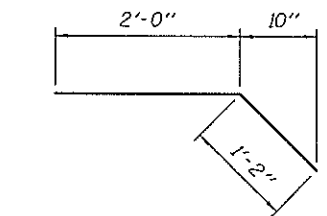
SECTION A-A

** Epoxy grout $h_5(E)$ & $n(E)$ bars in 9" min. holes according to Article 584 of the Standard Specifications.

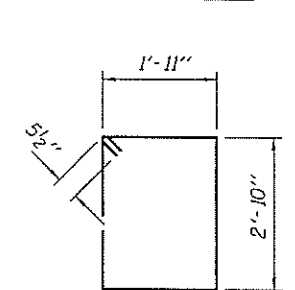
PRE-FINAL

DATE: 3/9/2016

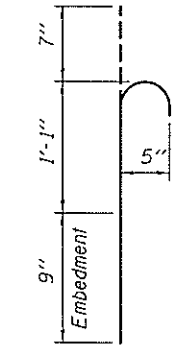
EXPIRES 11-30-2016



BAR $h_5(E)$



BAR $s_4(E)$



BAR $n(E)$

BILL OF MATERIAL
(3 PIERS)

Bar	No.	Size	Length	Shape
$h_4(E)$	81	#5	7'-8"	—
$h_5(E)$	144	#5	3'-2"	—
$n(E)$	90	#5	2'-5"	—
$s_4(E)$	72	#5	10'-5"	□
Concrete Removal			Cu. Yd.	3.5
Concrete Structures			Cu. Yd.	18.0
Reinforcement Bars, Epoxy Coated			Pound	2130

DESIGNED
 CHECKED
 DRAWN J. Schneller
 CHECKED

PASSED
 ACTING ENGINEER OF BRIDGES AND STRUCTURES

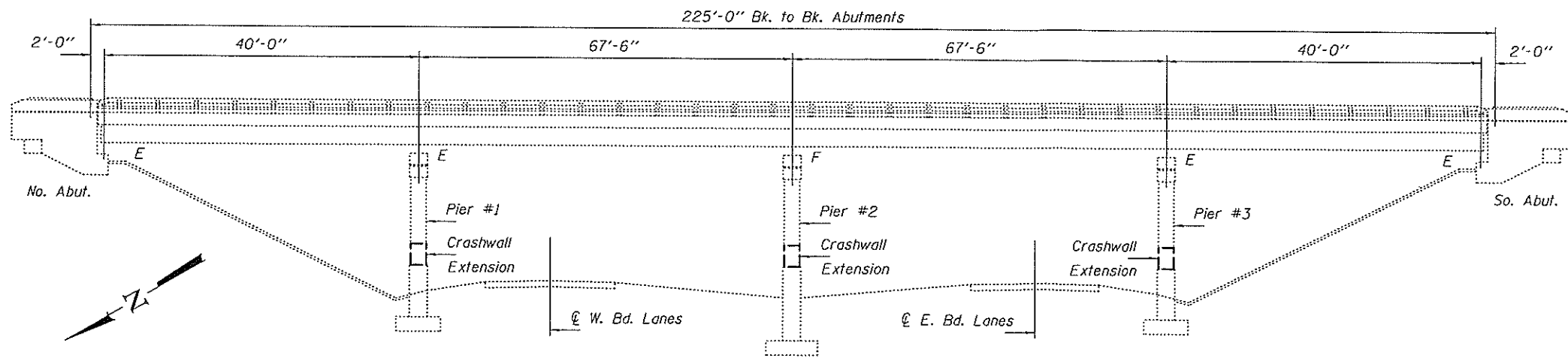
DATE FEBRUARY 29, 2016
 REVISED
 REVISED

STATE OF ILLINOIS
 DEPARTMENT OF TRANSPORTATION

CRASHWALL EXTENSION PIERS #1, #2 & #3
 SN 072-0057

SHEET NO. 1 OF 1 SHEETS

F.A.I. SECTION COUNTY TOTAL SHEETS SHEET NO.
 RTE. T4 48(24-30)GR:72-0.3,71GR PEORIA 23 18
 CONTRACT NO. 68D03
 [ILLINOIS] FED. AID PROJECT



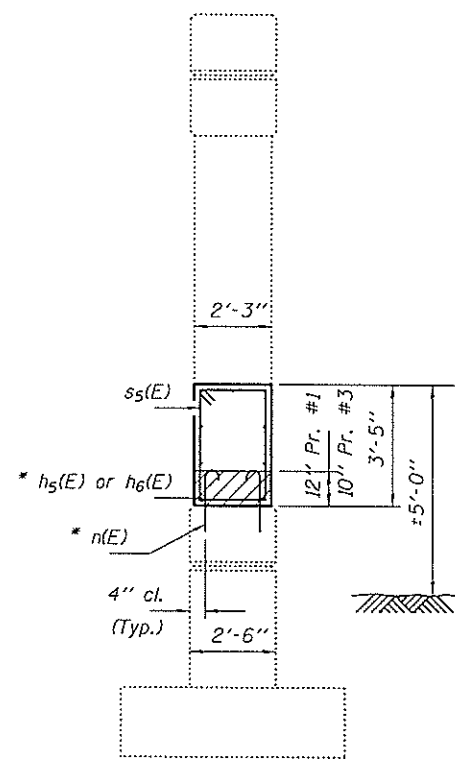
ELEVATION

NOTES

The cost of epoxy grouting threaded rods shall be included with Reinforcement Bars, Epoxy Coated.

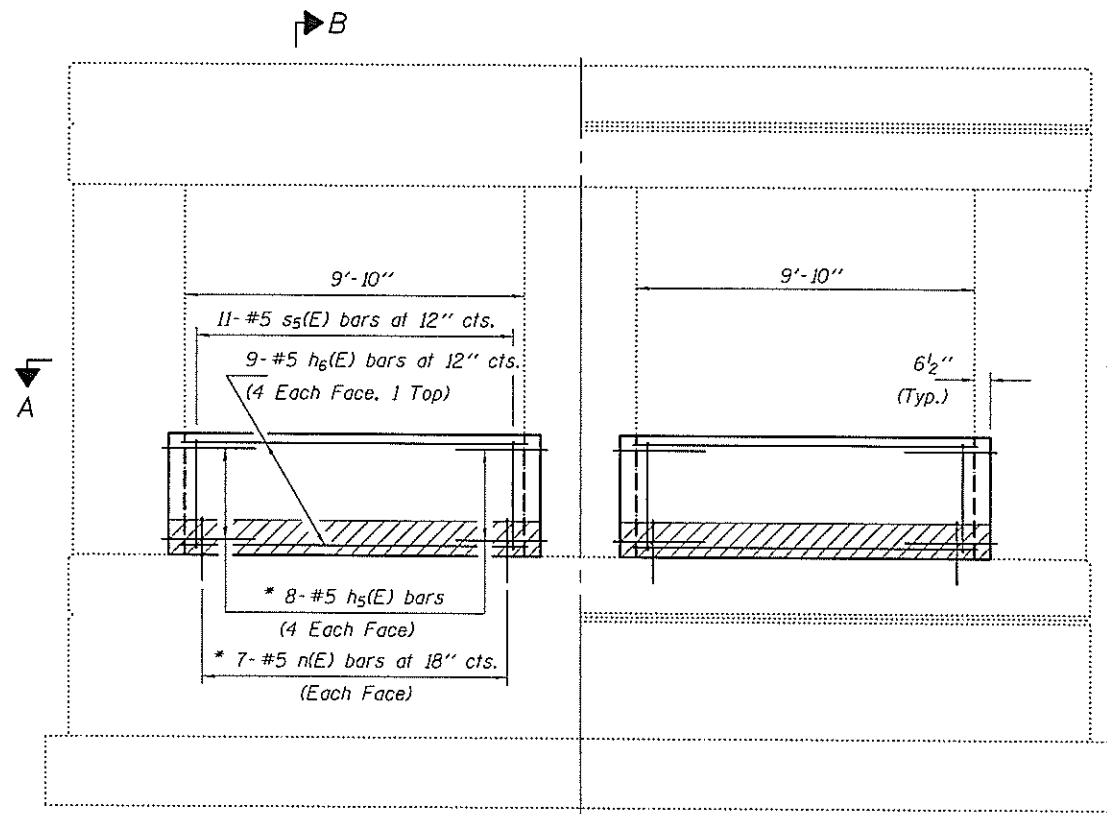
Plan dimensions and details relative to existing plans are subject to nominal construction variations. The Contractor shall field verify existing dimensions and details affecting new construction and make necessary approved adjustments prior to construction or ordering of materials. Such variations shall not be cause for additional compensation for a change in scope of the work, however, the Contractor will be paid for the quantity actually furnished at the unit price bid for the work.

Reinforcement bars designated (E) shall be epoxy coated.



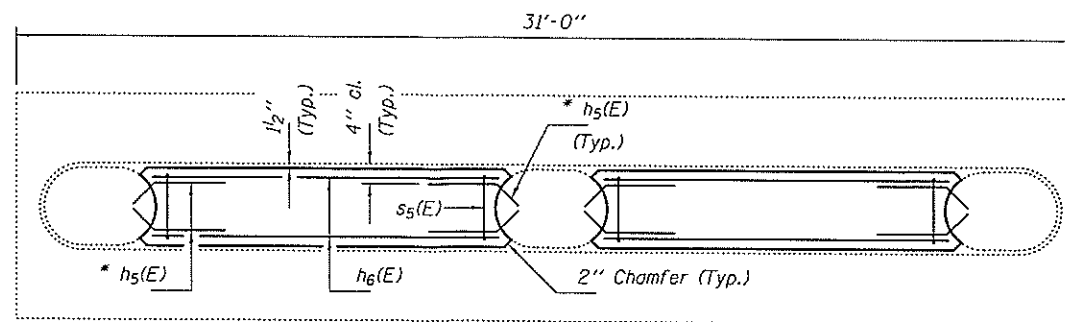
SECTION B-B

* Epoxy grout $h_5(E)$ & $n(E)$ bars in 9" min. holes according to Article 584 of the Standard Specifications.

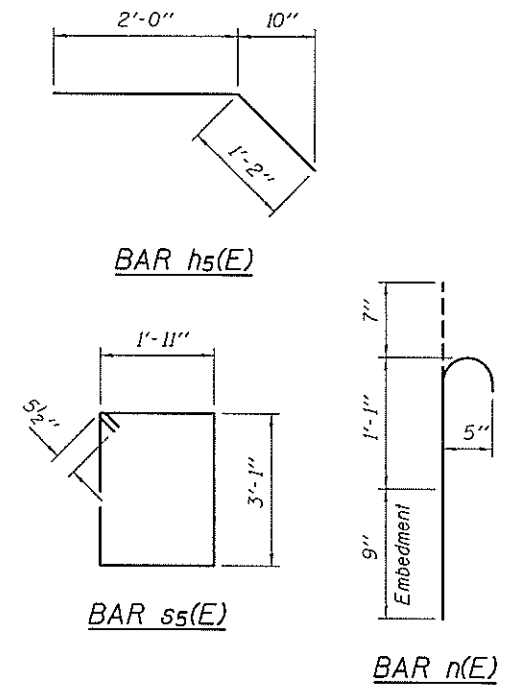


ELEVATION

Hatched areas indicate Concrete Removal, (Piers #1 & #3 only).



SECTION A-A



BILL OF MATERIAL
(3 PIERS)

Bar	No.	Size	Length	Shape
$h_5(E)$	96	#5	3'-2"	—
$h_6(E)$	54	#5	9'-10"	—
$n(E)$	84	#5	2'-5"	—
$s_5(E)$	66	#5	10'-11"	□
Concrete Removal			Cu. Yd.	3.1
Concrete Structures			Cu. Yd.	17.5
Reinforcement Bars, Epoxy Coated			Pound	1830

PRE-FINAL

DATE: 3/9/2016

EXPIRES 11-30-2016

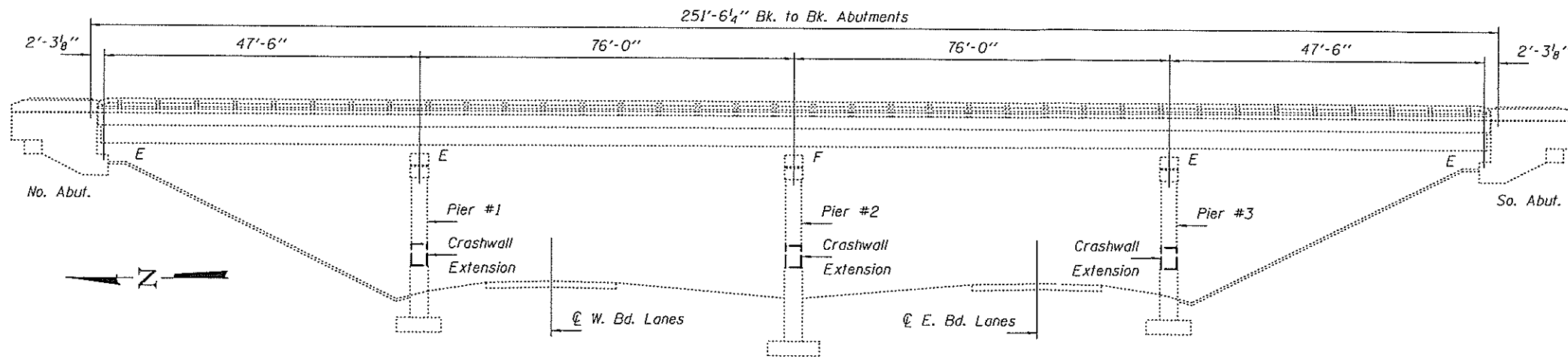
DESIGNED	DATE	FEBRUARY 29, 2016
CHECKED	REVIS	
DRAWN	J. Schneller	PASSED
CHECKED		ACTING ENGINEER OF BRIDGES AND STRUCTURES

STATE OF ILLINOIS
DEPARTMENT OF TRANSPORTATION

CRASHWALL EXTENSION PIERS #1, #2 & #3
SN 072-0059

SHEET NO. 1 OF 1 SHEETS

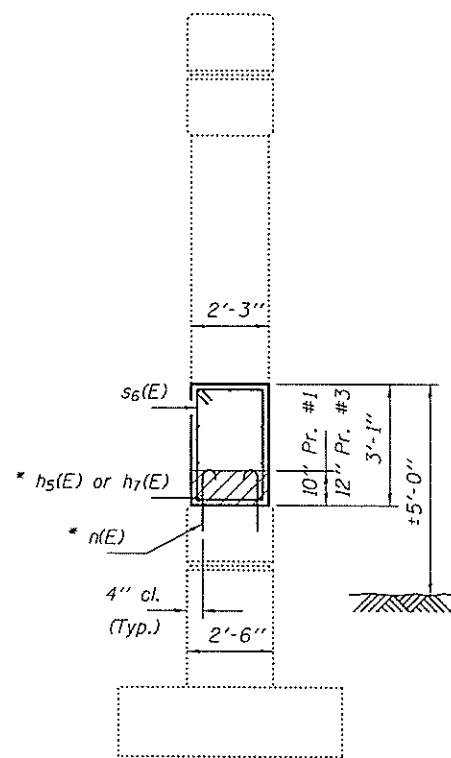
F.A.I. RTE.	SECTION	COUNTY	TOTAL SHEETS	SHEET NO.
74	48(24-30)GR;72-11.3,71GR	PEORIA	23	17
				CONTRACT NO. 68D03
ILLINOIS FED. AID PROJECT				



ELEVATION

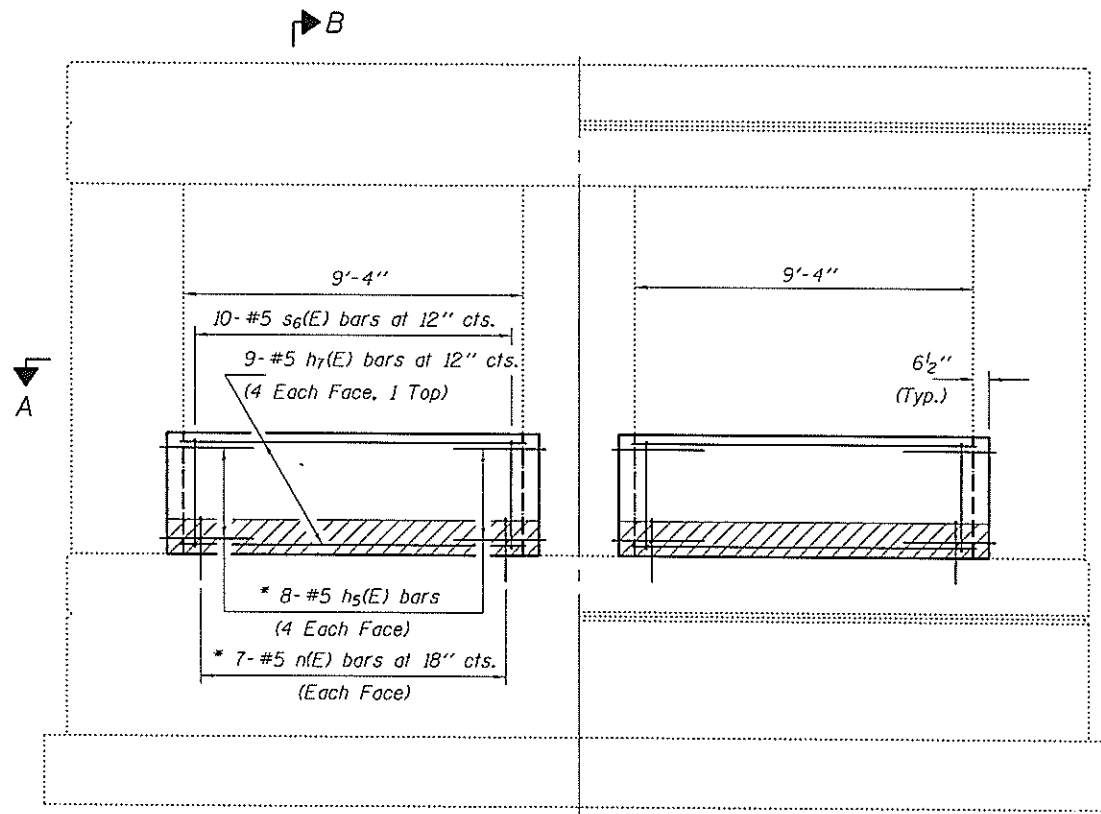
NOTES

The cost of epoxy grouting threaded rods shall be included with Reinforcement Bars, Epoxy Coated.
 Plan dimensions and details relative to existing plans are subject to nominal construction variations. The Contractor shall field verify existing dimensions and details affecting new construction and make necessary approved adjustments prior to construction or ordering of materials. Such variations shall not be cause for additional compensation for a change in scope of the work, however, the Contractor will be paid for the quantity actually furnished at the unit price bid for the work.
 Reinforcement bars designated (E) shall be epoxy coated.



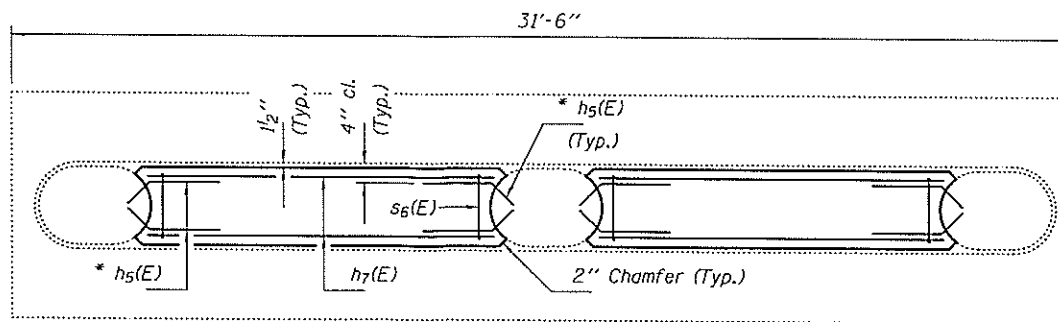
SECTION B-B

* Epoxy grout h₅(E) & n(E) bars in 9" min. holes according to Article 584 of the Standard Specifications.

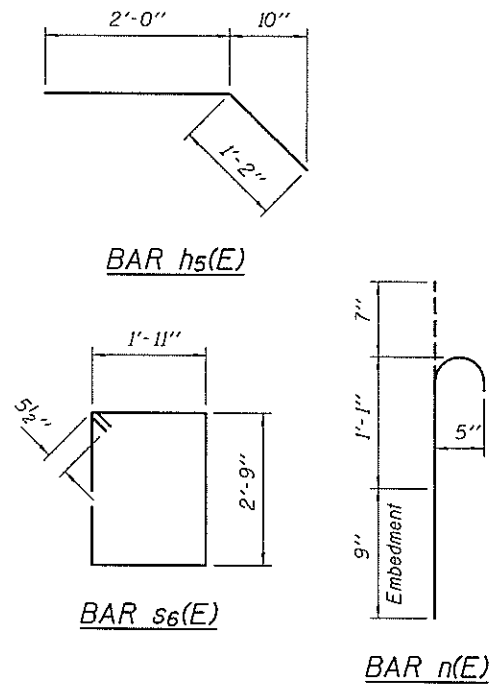


ELEVATION

Hatched areas indicate Concrete Removal, (Piers #1 & #3 only).



SECTION A-A



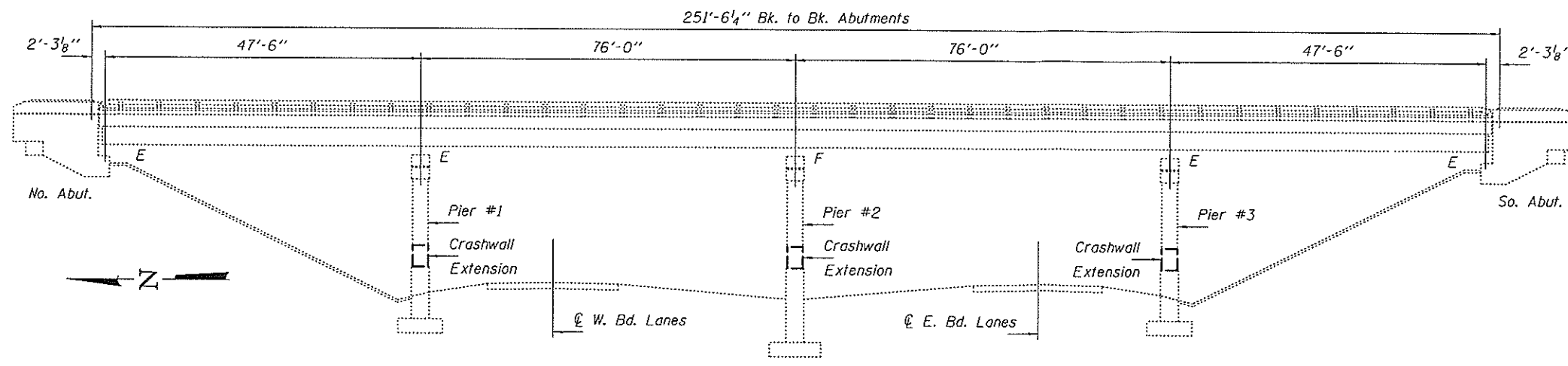
BILL OF MATERIAL (3 PIERS)

Bar	No.	Size	Length	Shape
h ₅ (E)	96	#5	3'-2"	—
h ₇ (E)	54	#5	9'-8"	—
n(E)	84	#5	2'-5"	—
s ₆ (E)	60	#5	10'-3"	□
Concrete Removal		Cu. Yd.	3.0	
Concrete Structures		Cu. Yd.	15.0	
Reinforcement Bars, Epoxy Coated		Pound	1710	

PRE-FINAL
 DATE: 3/9/2016

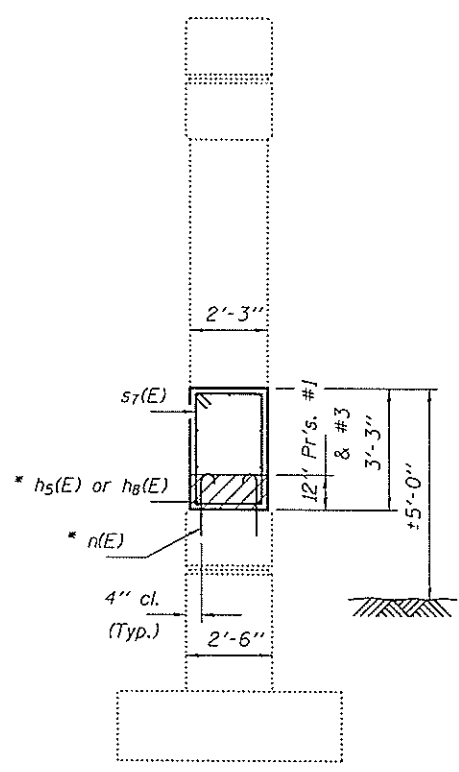
EXPIRES 11-30-2016

DESIGNED	DATE	FEBRUARY 29, 2016	STATE OF ILLINOIS		CRASHWALL EXTENSION PIERS #1, #2 & #3		F.A.I. RTE.	SECTION	COUNTY	TOTAL SHEETS	SHEET NO.
CHECKED	REVIS		DEPARTMENT OF TRANSPORTATION		SN 072-0070		74	48(24-30)GR72-(1,3,7)GR	PEORIA	23	18
DRAWN	REVIS						CONTRACT NO. 68D03				
CHECKED	REVIS						ILLINOIS FED. AID PROJECT				



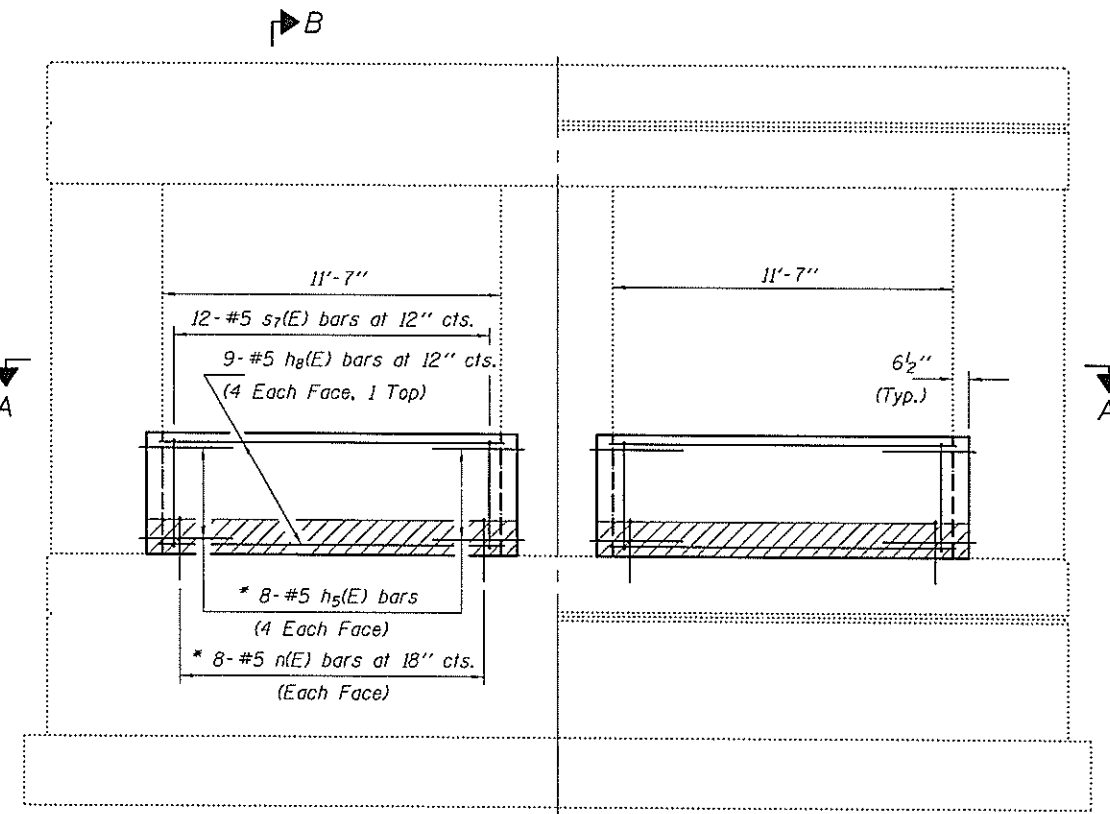
ELEVATION

NOTES
 The cost of epoxy grouting threaded rods shall be included with Reinforcement Bars, Epoxy Coated.
 Plan dimensions and details relative to existing plans are subject to nominal construction variations. The Contractor shall field verify existing dimensions and details affecting new construction and make necessary approved adjustments prior to construction or ordering of materials. Such variations shall not be cause for additional compensation for a change in scope of the work, however, the Contractor will be paid for the quantity actually furnished at the unit price bid for the work.
 Reinforcement bars designated (E) shall be epoxy coated.



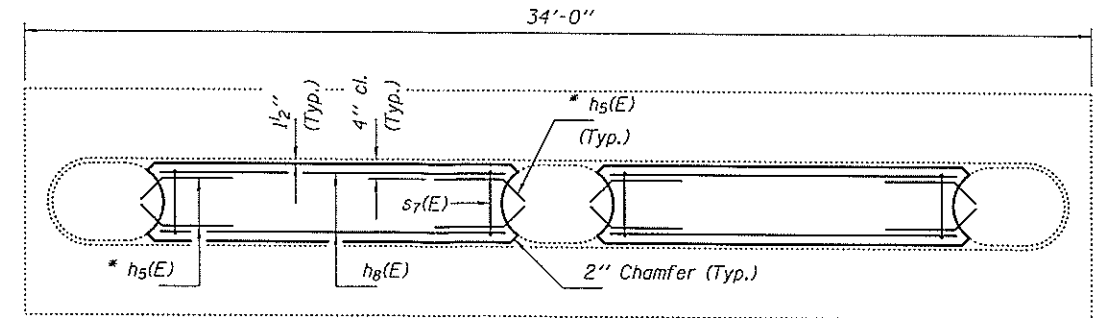
SECTION B-B

* Epoxy grout h₅(E) & n(E) bars in 9" min. holes according to Article 584 of the Standard Specifications.

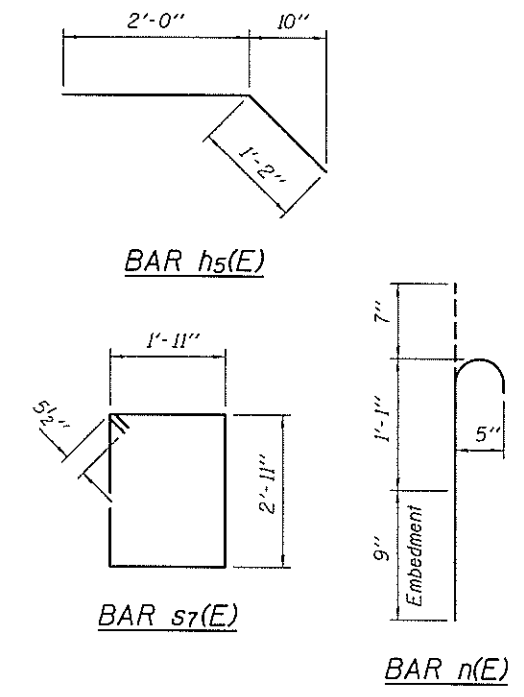


ELEVATION

Hatched areas indicate Concrete Removal, (Piers #1 & #3 only).



SECTION A-A



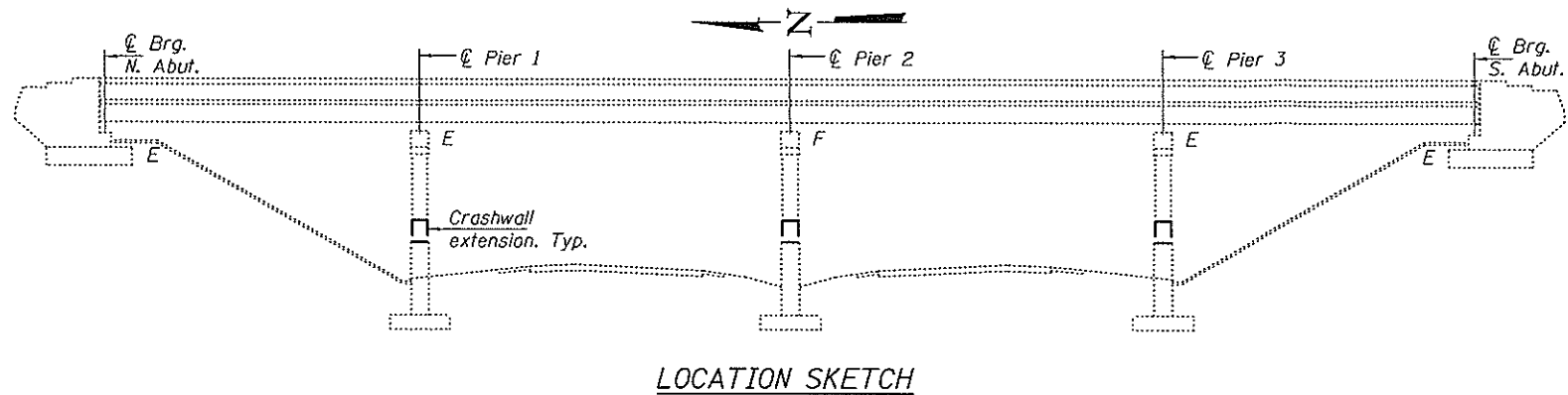
BILL OF MATERIAL (3 PIERS)

Bar	No.	Size	Length	Shape
h ₅ (E)	96	#5	3'-2"	┌
h ₈ (E)	54	#5	11'-11"	—
n(E)	96	#5	2'-5"	└
s ₇ (E)	72	#5	10'-7"	□
Concrete Removal			Cu. Yd.	4.0
Concrete Structures			Cu. Yd.	19.5
Reinforcement Bars, Epoxy Coated			Pound	2030

PRE-FINAL
 DATE: 3/9/2016

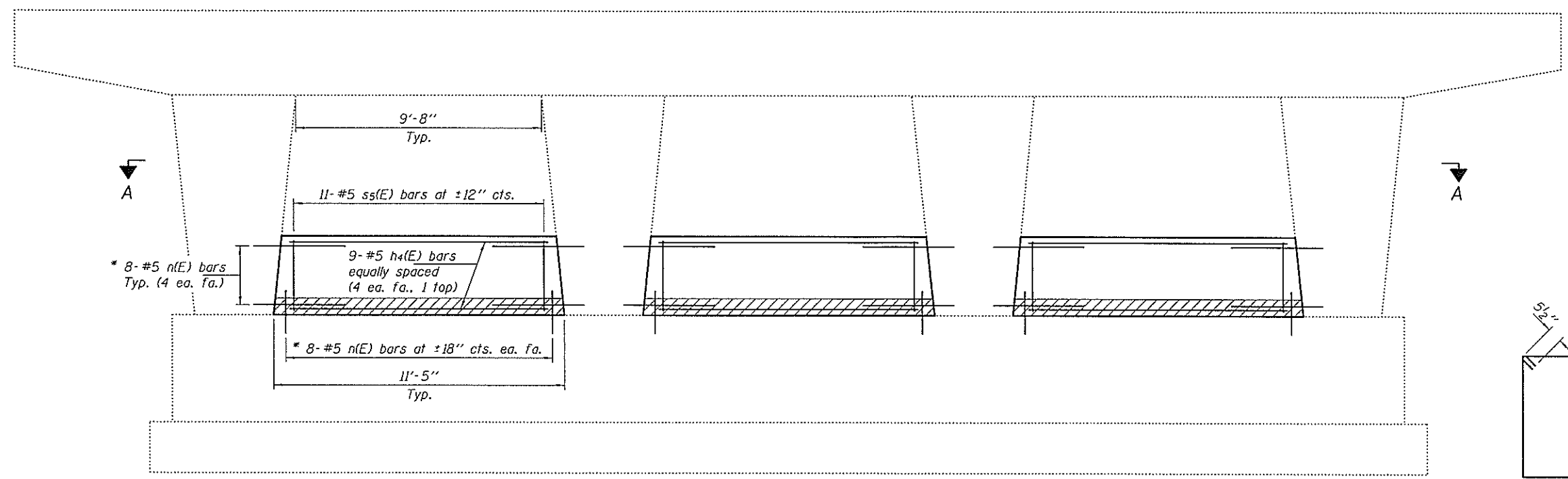
EXPIRES 11-30-2016

DESIGNED	DATE	FEBRUARY 29, 2016	STATE OF ILLINOIS		CRASHWALL EXTENSION PIERS #1, #2 & #3		F.A.I. RTE.	SECTION	COUNTY	TOTAL SHEETS	SHEET NO.
CHECKED			DEPARTMENT OF TRANSPORTATION		SN 072-0071		74	48(24-30)GR;72-11.3,71GR	PEORIA	2-3	19
DRAWN	J. Schneller						CONTRACT NO. 68D03				
CHECKED							SHEET NO. 1 OF 1 SHEETS				
PASSED		ACTING ENGINEER OF BRIDGES AND STRUCTURES					ILLINOIS FED. AID PROJECT				

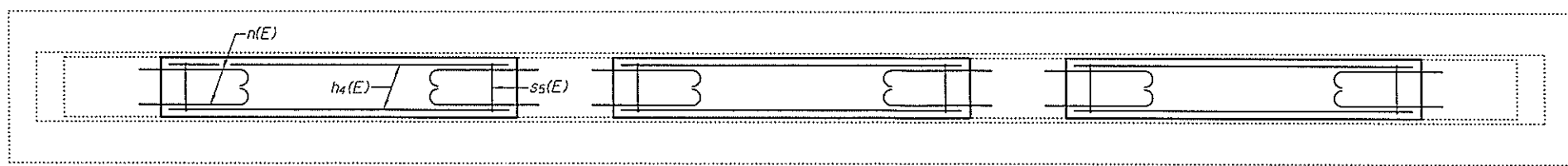


LOCATION SKETCH

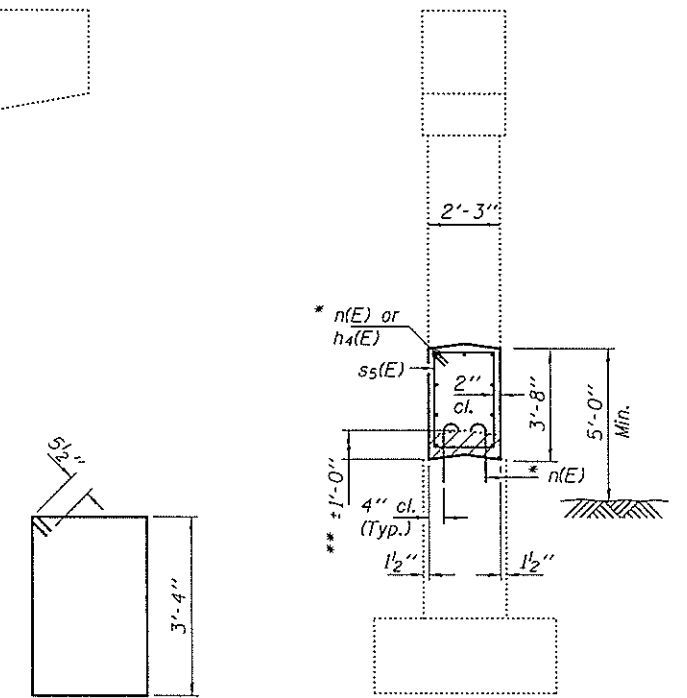
NOTES
 The cost of epoxy grouting threaded rods shall be included with Reinforcement Bars, Epoxy Coated.
 Plan dimensions and details relative to existing plans are subject to nominal construction variations. The Contractor shall field verify existing dimensions and details affecting new construction and make necessary approved adjustments prior to construction or ordering of materials. Such variations shall not be cause for additional compensation for a change in scope of the work, however, the Contractor will be paid for the quantity actually furnished at the unit price bid for the work.
 Reinforcement bars designated (E) shall be epoxy coated.



ELEVATION



SECTION A-A



SECTION B-B

** Hatched areas indicate removal. Removal to include the entire previous crashwall extension.

* Epoxy grout n(E) bars in 9" min. holes according to Article 584 of the Standard Specifications.

BAR ss(E)

BAR n(E)

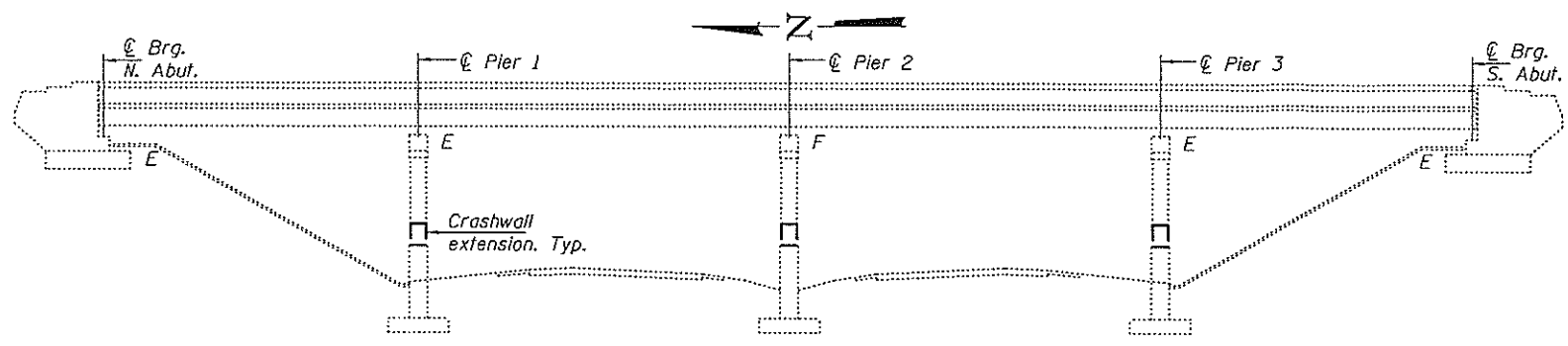
BILL OF MATERIAL (2 PIERS)

Bar	No.	Size	Length	Shape	
h4(E)	54	#5	10'-5"	—	
n(E)	192	#5	2'-5"	⌒	
ss(E)	66	#5	11'-5"	□	
Concrete Removal				Cu. Yd.	5.7
Concrete Structures				Cu. Yd.	20.3
Reinforcement Bars, Epoxy Coated				Pound	1860

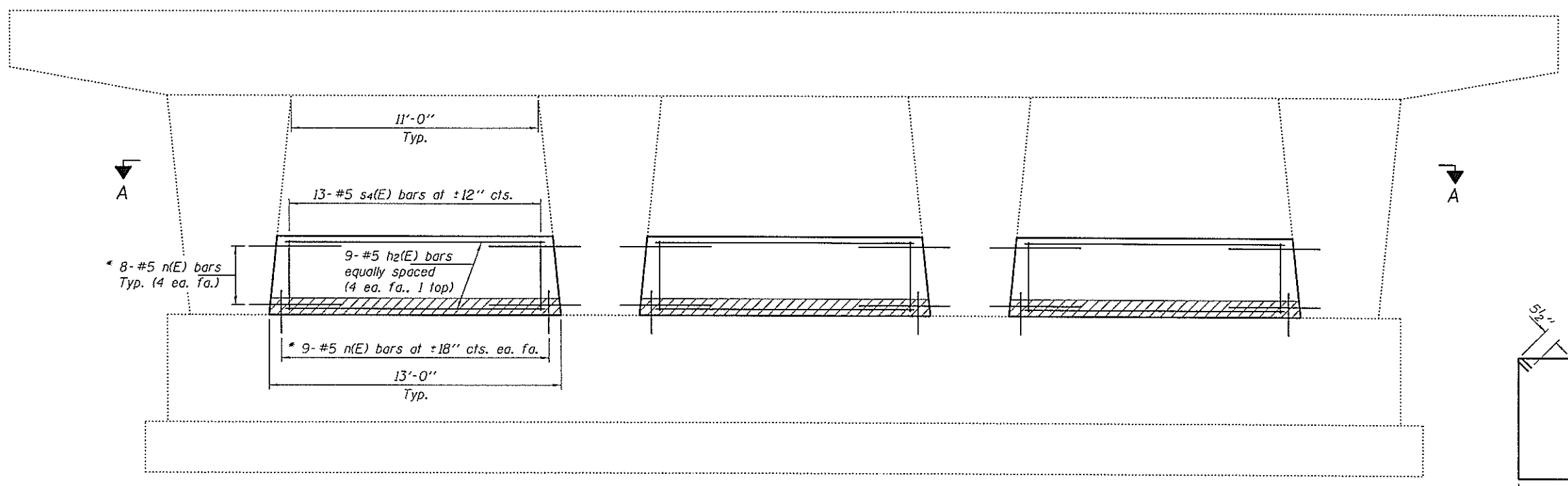
PRE-FINAL
 DATE: 2/29/2016
 EXPIRES 11-30-2016

NOTES

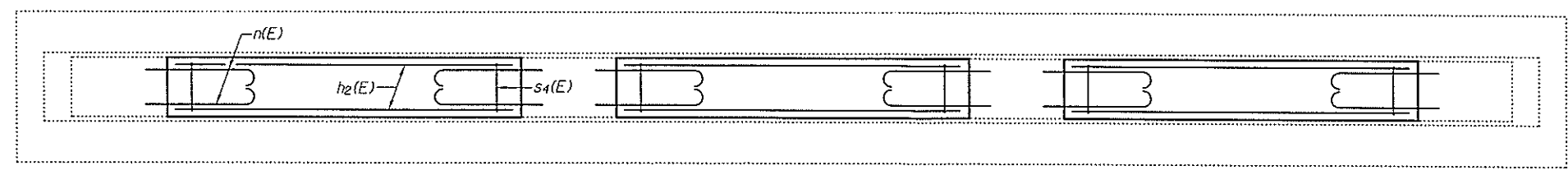
The cost of epoxy grouting threaded rods shall be included with Reinforcement Bars, Epoxy Coated.
 Plan dimensions and details relative to existing plans are subject to nominal construction variations. The Contractor shall field verify existing dimensions and details affecting new construction and make necessary approved adjustments prior to construction or ordering of materials. Such variations shall not be cause for additional compensation for a change in scope of the work, however, the Contractor will be paid for the quantity actually furnished at the unit price bid for the work.
 Reinforcement bars designated (E) shall be epoxy coated.



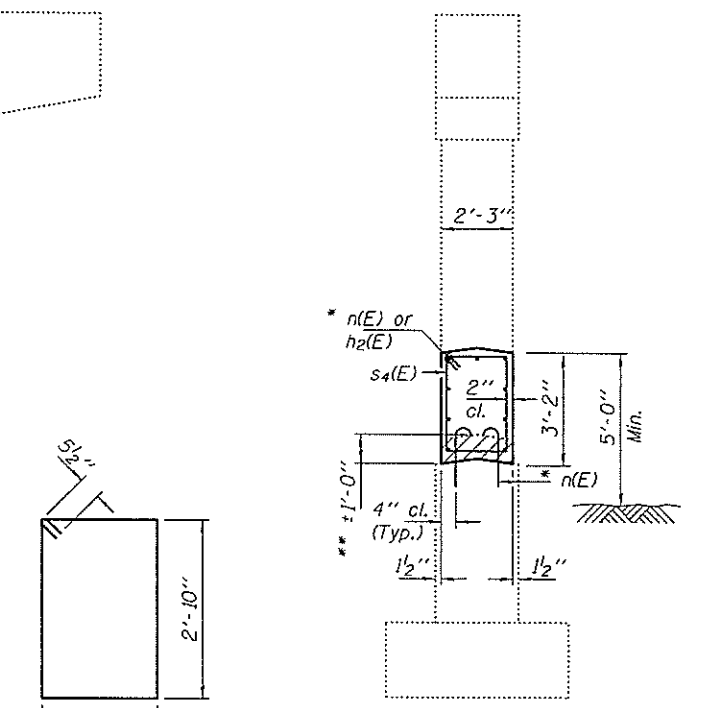
LOCATION SKETCH



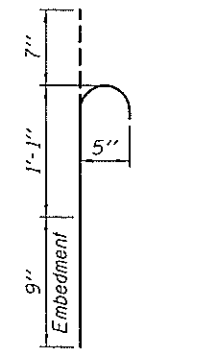
ELEVATION



SECTION A-A



BAR s4(E)



BAR n(E)

SECTION B-B

** Hatched areas indicate removal. Removal to include the entire previous crashwall extension.

* Epoxy grout n(E) bars in 9" min. holes according to Article 584 of the Standard Specifications.

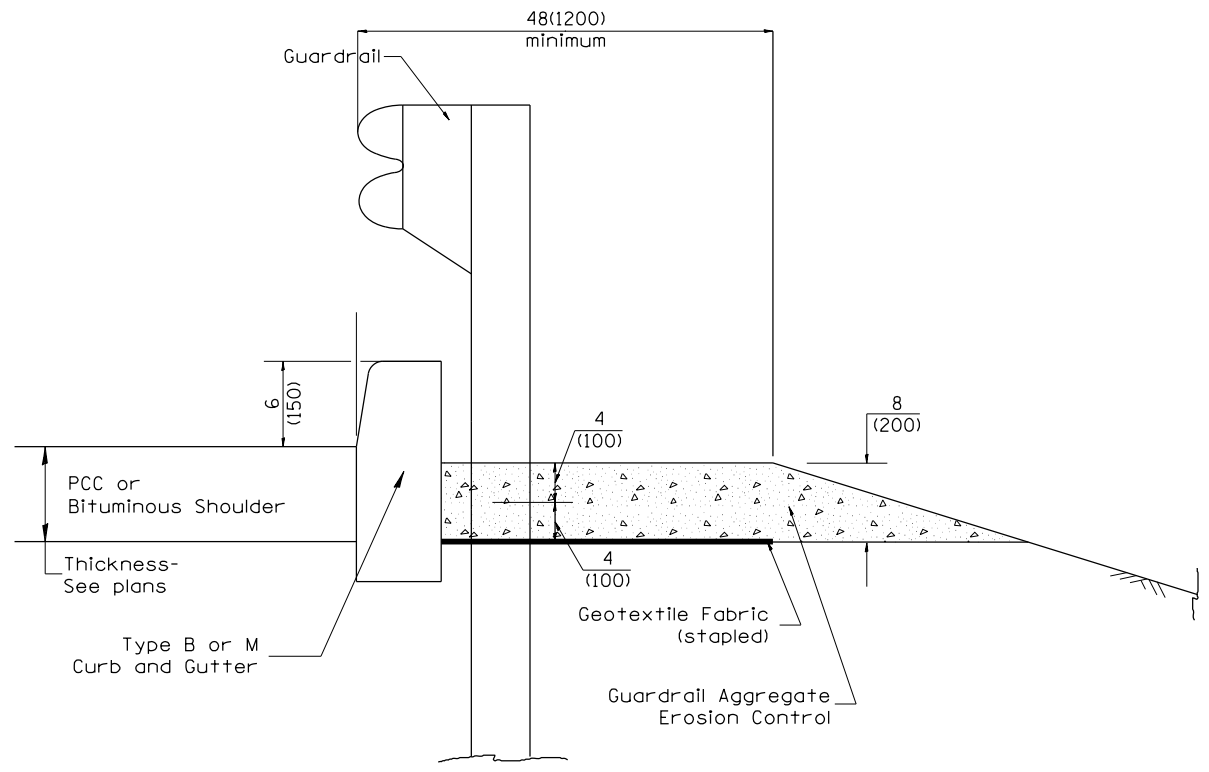
BILL OF MATERIAL (3 PIERS)

Bar	No.	Size	Length	Shape
h2(E)	81	#5	12'-4"	—
n(E)	306	#5	2'-5"	—
s4(E)	117	#5	10'-5"	□
Concrete Removal			Cu. Yd.	9.6
Concrete Structures			Cu. Yd.	30.3
Reinforcement Bars, Epoxy Coated			Pound	3090

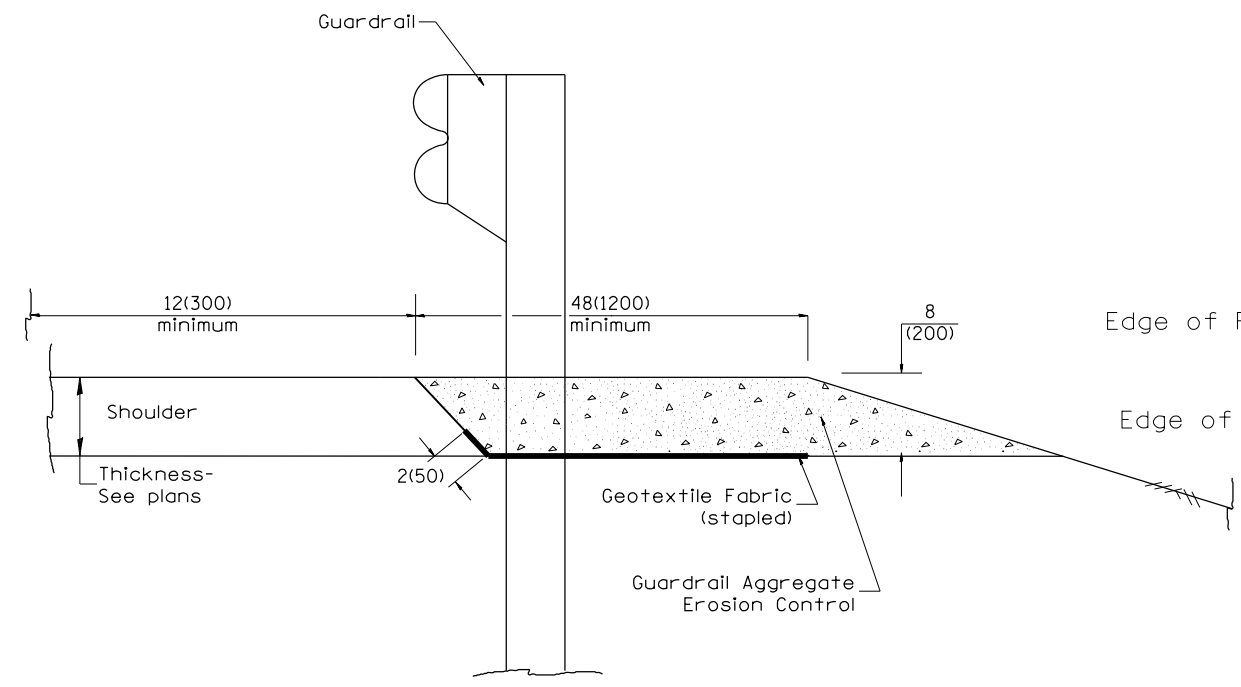
PRE-FINAL
 DATE: 2/29/2016

EXPIRES 11-30-2016

1. CONSIDER USING A "B" CURB PAY ITEM AT GUARDRAIL INSTALLATIONS WHERE GRADES ARE EQUAL TO OR GREATER THAN 1/2" AND AT INLETS. (INCLUDE DISTRICT SPECIAL PROVISION)
 2. USE "GUARDRAIL AGGREGATE EROSION CONTROL" AT GUARDRAIL INSTALLATIONS WHERE GRADES ARE LESS THAN 1/2" (INCLUDE DISTRICT SPECIAL PROVISION).
 3. INCLUDE STATE STANDARD 610001, IF APPLICABLE.
 4. INCLUDE THE FOLLOWING DISTRICT CADD STANDARDS AS NEEDED: SLOPE DRAINS FOR EXPOSED PIPES; SLOPE DRAINS FOR BURIED PIPES; SEEPAGE COLLARS FOR BURIED PIPES
 5. SLOPE DRAINS FOR EXPOSED PIPES; CONCRETE THRUST BLOCKS AND PIPE ELBOW.
 6. SLOPE DRAINS FOR EXPOSED PIPES; CONCRETE THRUST BLOCKS AND PIPE ELBOW.
 7. SLOPE DRAINS FOR EXPOSED PIPES; CONCRETE THRUST BLOCKS AND PIPE ELBOW.
 8. SLOPE DRAINS FOR EXPOSED PIPES; CONCRETE THRUST BLOCKS AND PIPE ELBOW.
 9. SLOPE DRAINS FOR EXPOSED PIPES; CONCRETE THRUST BLOCKS AND PIPE ELBOW.
 10. SLOPE DRAINS FOR EXPOSED PIPES; CONCRETE THRUST BLOCKS AND PIPE ELBOW.
 11. SLOPE DRAINS FOR EXPOSED PIPES; CONCRETE THRUST BLOCKS AND PIPE ELBOW.
 12. SLOPE DRAINS FOR EXPOSED PIPES; CONCRETE THRUST BLOCKS AND PIPE ELBOW.
 13. SLOPE DRAINS FOR EXPOSED PIPES; CONCRETE THRUST BLOCKS AND PIPE ELBOW.
 14. SLOPE DRAINS FOR EXPOSED PIPES; CONCRETE THRUST BLOCKS AND PIPE ELBOW.
 15. SLOPE DRAINS FOR EXPOSED PIPES; CONCRETE THRUST BLOCKS AND PIPE ELBOW.
 16. SLOPE DRAINS FOR EXPOSED PIPES; CONCRETE THRUST BLOCKS AND PIPE ELBOW.
 17. SLOPE DRAINS FOR EXPOSED PIPES; CONCRETE THRUST BLOCKS AND PIPE ELBOW.
 18. SLOPE DRAINS FOR EXPOSED PIPES; CONCRETE THRUST BLOCKS AND PIPE ELBOW.
 19. SLOPE DRAINS FOR EXPOSED PIPES; CONCRETE THRUST BLOCKS AND PIPE ELBOW.
 20. SLOPE DRAINS FOR EXPOSED PIPES; CONCRETE THRUST BLOCKS AND PIPE ELBOW.
 21. SLOPE DRAINS FOR EXPOSED PIPES; CONCRETE THRUST BLOCKS AND PIPE ELBOW.
 22. SLOPE DRAINS FOR EXPOSED PIPES; CONCRETE THRUST BLOCKS AND PIPE ELBOW.
 23. SLOPE DRAINS FOR EXPOSED PIPES; CONCRETE THRUST BLOCKS AND PIPE ELBOW.
 24. SLOPE DRAINS FOR EXPOSED PIPES; CONCRETE THRUST BLOCKS AND PIPE ELBOW.
 25. SLOPE DRAINS FOR EXPOSED PIPES; CONCRETE THRUST BLOCKS AND PIPE ELBOW.
 26. SLOPE DRAINS FOR EXPOSED PIPES; CONCRETE THRUST BLOCKS AND PIPE ELBOW.
 27. SLOPE DRAINS FOR EXPOSED PIPES; CONCRETE THRUST BLOCKS AND PIPE ELBOW.
 28. SLOPE DRAINS FOR EXPOSED PIPES; CONCRETE THRUST BLOCKS AND PIPE ELBOW.
 29. SLOPE DRAINS FOR EXPOSED PIPES; CONCRETE THRUST BLOCKS AND PIPE ELBOW.
 30. SLOPE DRAINS FOR EXPOSED PIPES; CONCRETE THRUST BLOCKS AND PIPE ELBOW.
 31. SLOPE DRAINS FOR EXPOSED PIPES; CONCRETE THRUST BLOCKS AND PIPE ELBOW.
 32. SLOPE DRAINS FOR EXPOSED PIPES; CONCRETE THRUST BLOCKS AND PIPE ELBOW.
 33. SLOPE DRAINS FOR EXPOSED PIPES; CONCRETE THRUST BLOCKS AND PIPE ELBOW.
 34. SLOPE DRAINS FOR EXPOSED PIPES; CONCRETE THRUST BLOCKS AND PIPE ELBOW.
 35. SLOPE DRAINS FOR EXPOSED PIPES; CONCRETE THRUST BLOCKS AND PIPE ELBOW.
 36. SLOPE DRAINS FOR EXPOSED PIPES; CONCRETE THRUST BLOCKS AND PIPE ELBOW.
 37. SLOPE DRAINS FOR EXPOSED PIPES; CONCRETE THRUST BLOCKS AND PIPE ELBOW.
 38. SLOPE DRAINS FOR EXPOSED PIPES; CONCRETE THRUST BLOCKS AND PIPE ELBOW.
 39. SLOPE DRAINS FOR EXPOSED PIPES; CONCRETE THRUST BLOCKS AND PIPE ELBOW.
 40. SLOPE DRAINS FOR EXPOSED PIPES; CONCRETE THRUST BLOCKS AND PIPE ELBOW.
 41. SLOPE DRAINS FOR EXPOSED PIPES; CONCRETE THRUST BLOCKS AND PIPE ELBOW.
 42. SLOPE DRAINS FOR EXPOSED PIPES; CONCRETE THRUST BLOCKS AND PIPE ELBOW.
 43. SLOPE DRAINS FOR EXPOSED PIPES; CONCRETE THRUST BLOCKS AND PIPE ELBOW.
 44. SLOPE DRAINS FOR EXPOSED PIPES; CONCRETE THRUST BLOCKS AND PIPE ELBOW.
 45. SLOPE DRAINS FOR EXPOSED PIPES; CONCRETE THRUST BLOCKS AND PIPE ELBOW.
 46. SLOPE DRAINS FOR EXPOSED PIPES; CONCRETE THRUST BLOCKS AND PIPE ELBOW.
 47. SLOPE DRAINS FOR EXPOSED PIPES; CONCRETE THRUST BLOCKS AND PIPE ELBOW.
 48. SLOPE DRAINS FOR EXPOSED PIPES; CONCRETE THRUST BLOCKS AND PIPE ELBOW.
 49. SLOPE DRAINS FOR EXPOSED PIPES; CONCRETE THRUST BLOCKS AND PIPE ELBOW.
 50. SLOPE DRAINS FOR EXPOSED PIPES; CONCRETE THRUST BLOCKS AND PIPE ELBOW.
 51. SLOPE DRAINS FOR EXPOSED PIPES; CONCRETE THRUST BLOCKS AND PIPE ELBOW.
 52. SLOPE DRAINS FOR EXPOSED PIPES; CONCRETE THRUST BLOCKS AND PIPE ELBOW.
 53. SLOPE DRAINS FOR EXPOSED PIPES; CONCRETE THRUST BLOCKS AND PIPE ELBOW.
 54. SLOPE DRAINS FOR EXPOSED PIPES; CONCRETE THRUST BLOCKS AND PIPE ELBOW.
 55. SLOPE DRAINS FOR EXPOSED PIPES; CONCRETE THRUST BLOCKS AND PIPE ELBOW.
 56. SLOPE DRAINS FOR EXPOSED PIPES; CONCRETE THRUST BLOCKS AND PIPE ELBOW.
 57. SLOPE DRAINS FOR EXPOSED PIPES; CONCRETE THRUST BLOCKS AND PIPE ELBOW.
 58. SLOPE DRAINS FOR EXPOSED PIPES; CONCRETE THRUST BLOCKS AND PIPE ELBOW.
 59. SLOPE DRAINS FOR EXPOSED PIPES; CONCRETE THRUST BLOCKS AND PIPE ELBOW.
 60. SLOPE DRAINS FOR EXPOSED PIPES; CONCRETE THRUST BLOCKS AND PIPE ELBOW.
 61. SLOPE DRAINS FOR EXPOSED PIPES; CONCRETE THRUST BLOCKS AND PIPE ELBOW.
 62. SLOPE DRAINS FOR EXPOSED PIPES; CONCRETE THRUST BLOCKS AND PIPE ELBOW.
 63. SLOPE DRAINS FOR EXPOSED PIPES; CONCRETE THRUST BLOCKS AND PIPE ELBOW.
 64. SLOPE DRAINS FOR EXPOSED PIPES; CONCRETE THRUST BLOCKS AND PIPE ELBOW.
 65. SLOPE DRAINS FOR EXPOSED PIPES; CONCRETE THRUST BLOCKS AND PIPE ELBOW.
 66. SLOPE DRAINS FOR EXPOSED PIPES; CONCRETE THRUST BLOCKS AND PIPE ELBOW.
 67. SLOPE DRAINS FOR EXPOSED PIPES; CONCRETE THRUST BLOCKS AND PIPE ELBOW.
 68. SLOPE DRAINS FOR EXPOSED PIPES; CONCRETE THRUST BLOCKS AND PIPE ELBOW.
 69. SLOPE DRAINS FOR EXPOSED PIPES; CONCRETE THRUST BLOCKS AND PIPE ELBOW.
 70. SLOPE DRAINS FOR EXPOSED PIPES; CONCRETE THRUST BLOCKS AND PIPE ELBOW.
 71. SLOPE DRAINS FOR EXPOSED PIPES; CONCRETE THRUST BLOCKS AND PIPE ELBOW.
 72. SLOPE DRAINS FOR EXPOSED PIPES; CONCRETE THRUST BLOCKS AND PIPE ELBOW.
 73. SLOPE DRAINS FOR EXPOSED PIPES; CONCRETE THRUST BLOCKS AND PIPE ELBOW.
 74. SLOPE DRAINS FOR EXPOSED PIPES; CONCRETE THRUST BLOCKS AND PIPE ELBOW.
 75. SLOPE DRAINS FOR EXPOSED PIPES; CONCRETE THRUST BLOCKS AND PIPE ELBOW.
 76. SLOPE DRAINS FOR EXPOSED PIPES; CONCRETE THRUST BLOCKS AND PIPE ELBOW.
 77. SLOPE DRAINS FOR EXPOSED PIPES; CONCRETE THRUST BLOCKS AND PIPE ELBOW.
 78. SLOPE DRAINS FOR EXPOSED PIPES; CONCRETE THRUST BLOCKS AND PIPE ELBOW.
 79. SLOPE DRAINS FOR EXPOSED PIPES; CONCRETE THRUST BLOCKS AND PIPE ELBOW.
 80. SLOPE DRAINS FOR EXPOSED PIPES; CONCRETE THRUST BLOCKS AND PIPE ELBOW.
 81. SLOPE DRAINS FOR EXPOSED PIPES; CONCRETE THRUST BLOCKS AND PIPE ELBOW.
 82. SLOPE DRAINS FOR EXPOSED PIPES; CONCRETE THRUST BLOCKS AND PIPE ELBOW.
 83. SLOPE DRAINS FOR EXPOSED PIPES; CONCRETE THRUST BLOCKS AND PIPE ELBOW.
 84. SLOPE DRAINS FOR EXPOSED PIPES; CONCRETE THRUST BLOCKS AND PIPE ELBOW.
 85. SLOPE DRAINS FOR EXPOSED PIPES; CONCRETE THRUST BLOCKS AND PIPE ELBOW.
 86. SLOPE DRAINS FOR EXPOSED PIPES; CONCRETE THRUST BLOCKS AND PIPE ELBOW.
 87. SLOPE DRAINS FOR EXPOSED PIPES; CONCRETE THRUST BLOCKS AND PIPE ELBOW.
 88. SLOPE DRAINS FOR EXPOSED PIPES; CONCRETE THRUST BLOCKS AND PIPE ELBOW.
 89. SLOPE DRAINS FOR EXPOSED PIPES; CONCRETE THRUST BLOCKS AND PIPE ELBOW.
 90. SLOPE DRAINS FOR EXPOSED PIPES; CONCRETE THRUST BLOCKS AND PIPE ELBOW.
 91. SLOPE DRAINS FOR EXPOSED PIPES; CONCRETE THRUST BLOCKS AND PIPE ELBOW.
 92. SLOPE DRAINS FOR EXPOSED PIPES; CONCRETE THRUST BLOCKS AND PIPE ELBOW.
 93. SLOPE DRAINS FOR EXPOSED PIPES; CONCRETE THRUST BLOCKS AND PIPE ELBOW.
 94. SLOPE DRAINS FOR EXPOSED PIPES; CONCRETE THRUST BLOCKS AND PIPE ELBOW.
 95. SLOPE DRAINS FOR EXPOSED PIPES; CONCRETE THRUST BLOCKS AND PIPE ELBOW.
 96. SLOPE DRAINS FOR EXPOSED PIPES; CONCRETE THRUST BLOCKS AND PIPE ELBOW.
 97. SLOPE DRAINS FOR EXPOSED PIPES; CONCRETE THRUST BLOCKS AND PIPE ELBOW.
 98. SLOPE DRAINS FOR EXPOSED PIPES; CONCRETE THRUST BLOCKS AND PIPE ELBOW.
 99. SLOPE DRAINS FOR EXPOSED PIPES; CONCRETE THRUST BLOCKS AND PIPE ELBOW.
 100. SLOPE DRAINS FOR EXPOSED PIPES; CONCRETE THRUST BLOCKS AND PIPE ELBOW.



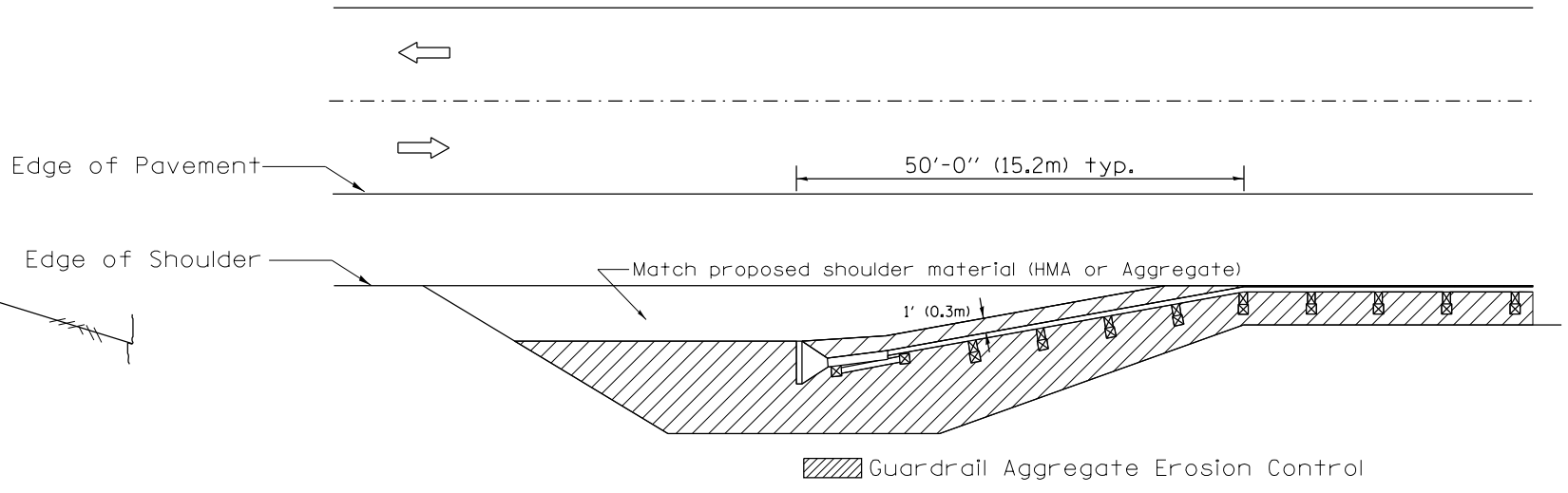
TYPICAL SECTION WITH EROSION CONTROL CURB



TYPICAL SECTION WITHOUT EROSION CONTROL CURB

GENERAL NOTES: GUARDRAIL AGGREGATE EROSION CONTROL

1. This work shall consist of grading as needed, furnishing and installing geotextile fabric and staples, and furnishing, placing and shaping crushed aggregate around and behind Steel Plate Beam Guardrail posts in accordance with Plan Details.
2. Before placing the aggregate and the Geotextile Fabric, weeds and grass shall be removed from the area to be covered.
3. After the area has been prepared, and in a dry condition, the Geotextile fabric shall be placed with a 12(300) minimum overlap. A knife cut for guardrail post installation is necessary.
4. The aggregate shall be deposited, compacted and shaped by either mechanical or hand methods, in a manner reasonably true to line and grade.
5. The Contractor shall have the option of placing the guardrail before or after the Geotextile Fabric and Aggregate are in place. If the guardrail is placed after the Geotextile Fabric and Aggregate, then any voids must be filled and the aggregate returned to line and grade.
6. Materials shall meet the following requirements:
 - A. The crushed aggregate shall be CA1 gradation in accordance with Article 1004.01(c) of the Standard Specifications.
 - B. The Geotextile Fabric shall be nonwoven fabric in accordance with Article 1080.02 of the Standard Specifications.



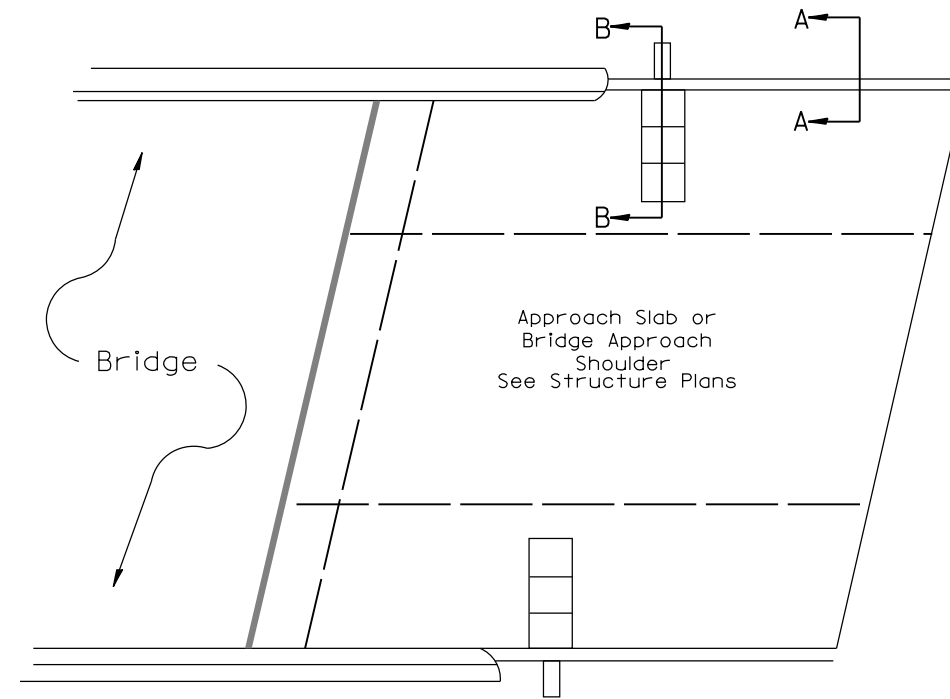
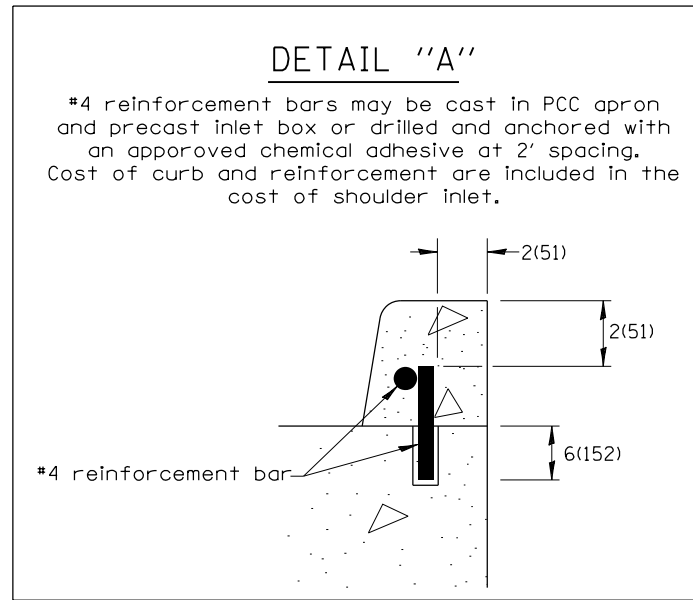
All dimensions are in inches (millimeters) unless otherwise noted.

01-01-97	RENUM. C-22.01, NEW REVISION BOX	T.P.	3-7-11	Added Detail showing plan view	R.D.
03-01-97	CORRECT STD. NUMBERS IN NOTES PG. 2	J.A.	8-10-12	Revised curb "B" and aggregate	R.D.
11-03-00	CORRECTION TO NOTES	M.A.	7-15-15	Addressed shoulder inlet curb	R.D.
10-16-06	REVISED TO 2007 SPEC.	M.A.			

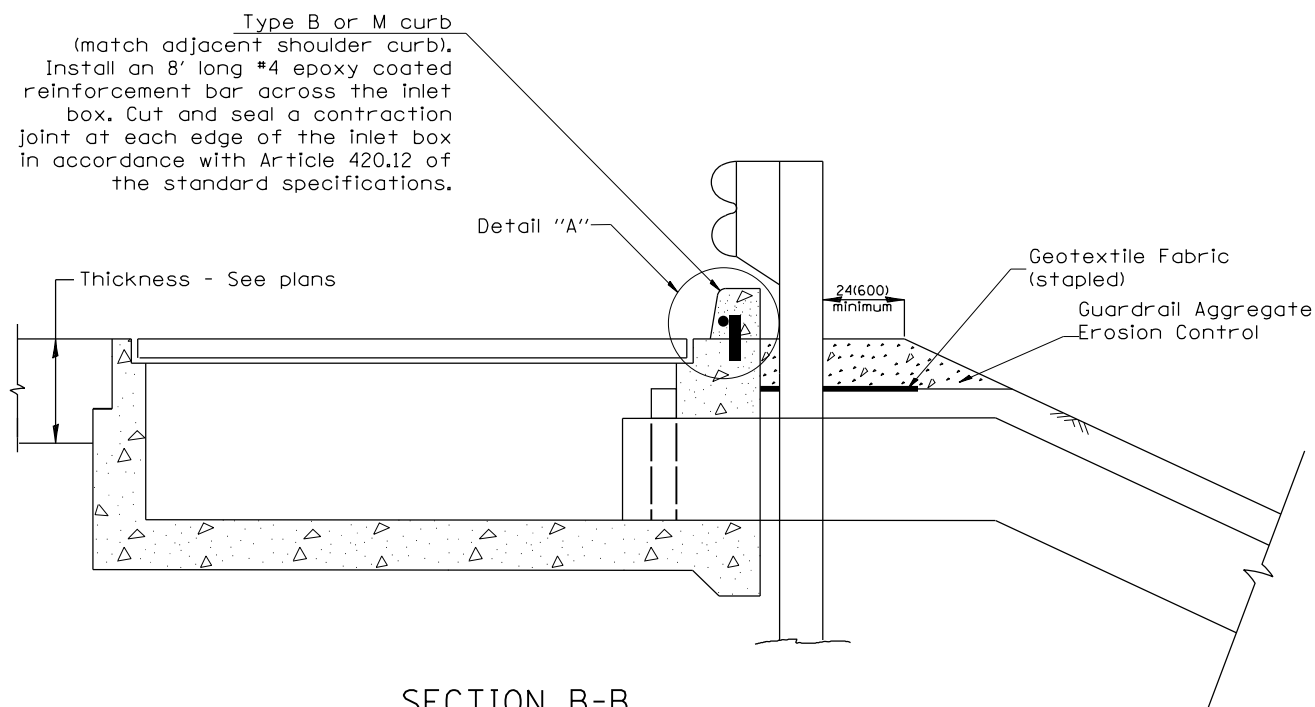
STATE OF ILLINOIS
DEPARTMENT OF TRANSPORTATION

GUARDRAIL EROSION CONTROL TREATMENTS
NOT TO SCALE
SHT. 1 OF 2
CADD STD. 630101-D4

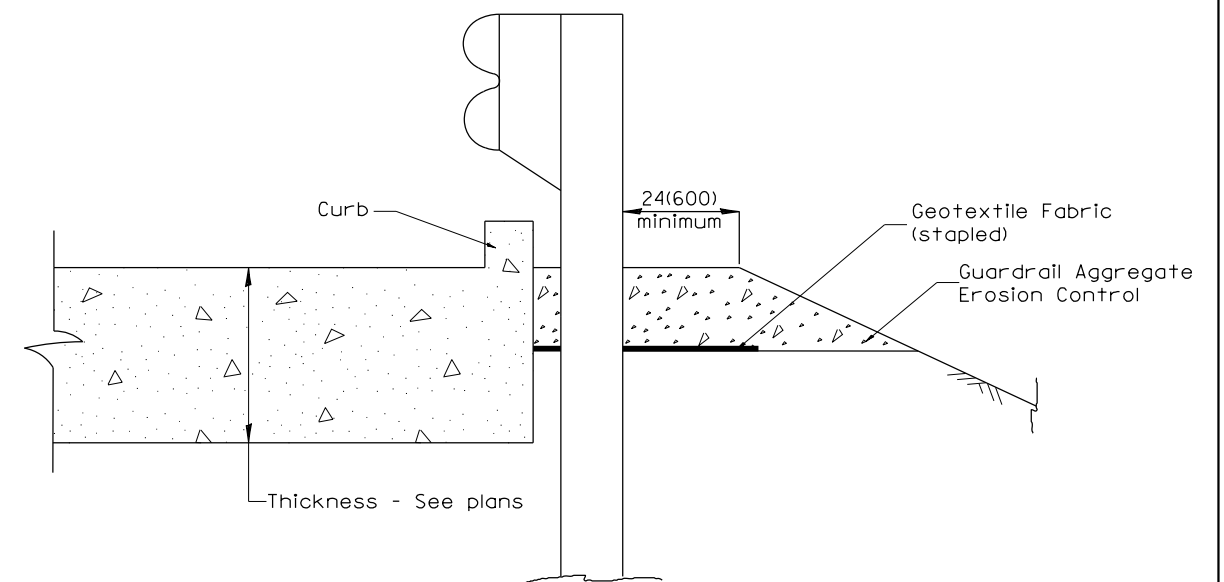
F.A.I. RTE.	SECTION	COUNTY	TOTAL SHEETS	SHEET NO.
74	48(27-30)GR;72-(1,3-7)GR	PEORIA/KNOX	23	22
FED. ROAD DIST. NO. ILLINOIS FED. AID PROJECT			CONTRACT NO. 68D03	



PLAN VIEW
APPROACH SLAB OR SHOULDER PLACEMENT



SECTION B-B
TYPICAL SECTION AT INLETS
TYPE E, F & G (HIGHWAY STANDARD 610001)



SECTION A-A
TYPICAL SECTION WITH BRIDGE APPROACH CURB

All dimensions are in inches (millimeters) unless otherwise noted.

FILE NAME =	USER NAME = lababidism	DESIGNED -	REVISED -	STATE OF ILLINOIS DEPARTMENT OF TRANSPORTATION	GUARDRAIL EROSION CONTROL TREATMENTS	F.A.I. RTE.	SECTION	COUNTY	TOTAL SHEETS	SHEET NO.	
D468003-sh1-plan.dgn		DRAWN -	REVISED -			74	48(27-30)GR;72-(1,3-7)GR	PEORIA/KNOX	23	23	
Default	PLOT SCALE = 200.0000' / in.	CHECKED -	REVISED -			SHT. 2 OF 2					
	PLOT DATE = 3/18/2016	DATE -	REVISED -			CONTRACT NO. 68D03					
					NOT TO SCALE		SHEET OF SHEETS		STA. CADD STD. 630101-D4		FED. ROAD DIST. NO. ILLINOIS FED. AID PROJECT