

STATE OF ILLINOIS
DEPARTMENT OF TRANSPORTATION

F.A. RTE.	SECTION	COUNTY	TOTAL SHEETS	SHEET NO.
		**	18	1
		ILLINOIS	CONTRACT NO. 74750	

*D7 GUARDRAIL IMPROVEMENTS 2016-1
**MACON, MOULTRIE & SHELBY

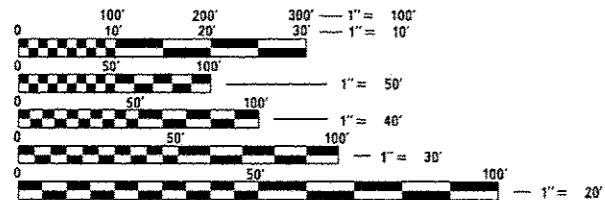
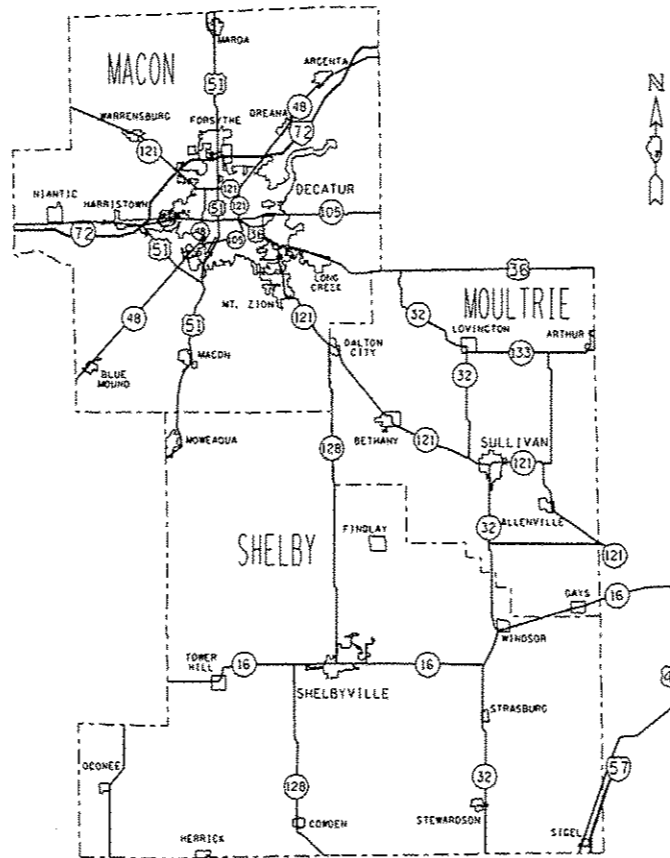
D-97-013-16

FOR INDEX OF SHEETS, SEE SHEET NO. 2

PROPOSED HIGHWAY PLANS

VARIOUS ROUTE
SECTION D7 GUARDRAIL IMPROVEMENTS 2016-1
PROJECT ACHSIP-000V(061)
TYPE of IMPROVEMENT-SAFETY
MACON, MOULTRIE & SHELBY COUNTY

C-97-043-16



FULL SIZE PLANS HAVE BEEN PREPARED USING STANDARD ENGINEERING SCALES. REDUCED SIZED PLANS WILL NOT CONFORM TO STANDARD SCALES. IN MAKING MEASUREMENTS ON REDUCED PLANS, THE ABOVE SCALES MAY BE USED.

J.U.L.I.E.
JOINT UTILITY LOCATION INFORMATION FOR EXCAVATION
1-800-892-0123
OR 811

PROJECT ENGINEER ROB MACKLIN
PROJECT MANAGER LYNN McCLELLAN

CONTRACT NO. 74750

GROSS LENGTH = x.xx FT. = x.xxx MILE
NET LENGTH = x.xx FT. = x.xxx MILE

STATE OF ILLINOIS
DEPARTMENT OF TRANSPORTATION

SUBMITTED MARCH 18 20 16
Jeffrey M. Smith
REGIONAL FOUR ENGINEER

Maureen M. Addis
ENGINEER OF DESIGN AND ENVIRONMENT

Maureen M. Addis
DIRECTOR OF PROGRAM DEVELOPMENT

PRINTED BY THE AUTHORITY
OF THE STATE OF ILLINOIS

GENERAL NOTES

THIS PROJECT IS LOCATED ON VARIOUS ROUTES IN MACON, MOULTRIE OR SHELBY COUNTIES ALL LOCATED WITHIN REGION 4-DISTRICT 7. THE WORK INCLUDED IN THIS SECTION CONSISTS OF VARIOUS TYPES OF GUARDRAIL REMOVAL, REPLACEMENT AND ALL OTHER WORK NECESSARY TO COMPLETE THIS SECTION.

THE LOCATIONS AS SHOWN ON THE LOCATION MAPS ARE FOR INFORMATION ONLY. CONTRACTOR AND RESIDENT ENGINEER SHOULD FIND SPECIFIC LOCATIONS USING THE LATITUDE AND LONGITUDE ON THE END SECTION LOCATION SPREAD SHEETS.

REMOVAL OF DAMAGED MATERIALS SHALL INCLUDE DISMANTLING, LOADING, HAULING AND DISPOSAL. THE WORK SITE SHALL BE LEFT IN A SAFE AND ORDERLY CONDITION.

NO MATERIAL SHALL BE LEFT ON OR NEAR THE ROADWAY DURING NON-WORKING HOURS.

ANY NECESSARY TRAFFIC CONTROL SHALL BE PROVIDED BY THE CONTRACTOR; APPROPRIATE STANDARDS ARE LISTED AT RIGHT.

REMOVED GUARDRAIL THAT IS NOT REPLACED ON THE SAME DAY MUST BE DELINEATED WITH LIGHTED BARRICADES. NO LOCATIONS SHALL BE LEFT WITHOUT EITHER LIGHTED BARRICADES OR RESTORED GUARDRAIL AT ANY TIME.

GUARDRAIL MARKERS SHALL NOT BE ATTACHED TO TERMINAL SECTIONS.

ILLINOIS STATE LAW REQUIRES A 48-HOUR NOTICE TO BE GIVEN TO UTILITIES BEFORE DIGGING. FIELD MARKING OF FACILITIES MAY BE OBTAINED BY CONTACTING J.U.L.I.E. (PH. 800-892-0123) OR FOR NON-MEMBER, THE UTILITY COMPANY DIRECTLY.

FURNISHED EXCAVATION, AS SHOWN, IS FOR CONSTRUCTING THE PROPOSED SHOULDER WIDENING TRANSITION FOR TYPE 1 (SPECIAL) GUARDRAIL TERMINALS (STANDARD 630301), AS NEEDED. QUANTITIES SHOWN ARE APPROXIMATE.

NO OVERNIGHT LANE CLOSURES WILL BE ALLOWED.

THE CONTRACTOR IS ADVISED THAT THE GUARDRAIL PAY ITEMS INCLUDED IN THE PLANS MAY BE USED TO REPLACE SPBGR AND TRAFFIC BARRIER TERMINALS FOR THE NEW MIDWEST STANDARD AS SHOWN IN THE HIGHWAY STANDARDS AS WELL AS SPBGR AND TRAFFIC BARRIER TERMNAL INSTALLED PRIOR TO JAN. 1, 2007. NO ADDITIONAL COMPENSATION WILL BE ALLOWED FOR UTILIZING THE CURRENT MIDWEST STANDARDS.

THE PAY ITEM "TERMINAL MARKER-DIRECT APPLIED" SHALL BE ATTACHED TO THE TRAFFIC BARRIER TERMINAL IN A WAY THE MEETS OR EXCEEDS THE MANUFACTURER'S SPECIFICATIONS.

INDEX OF SHEETS

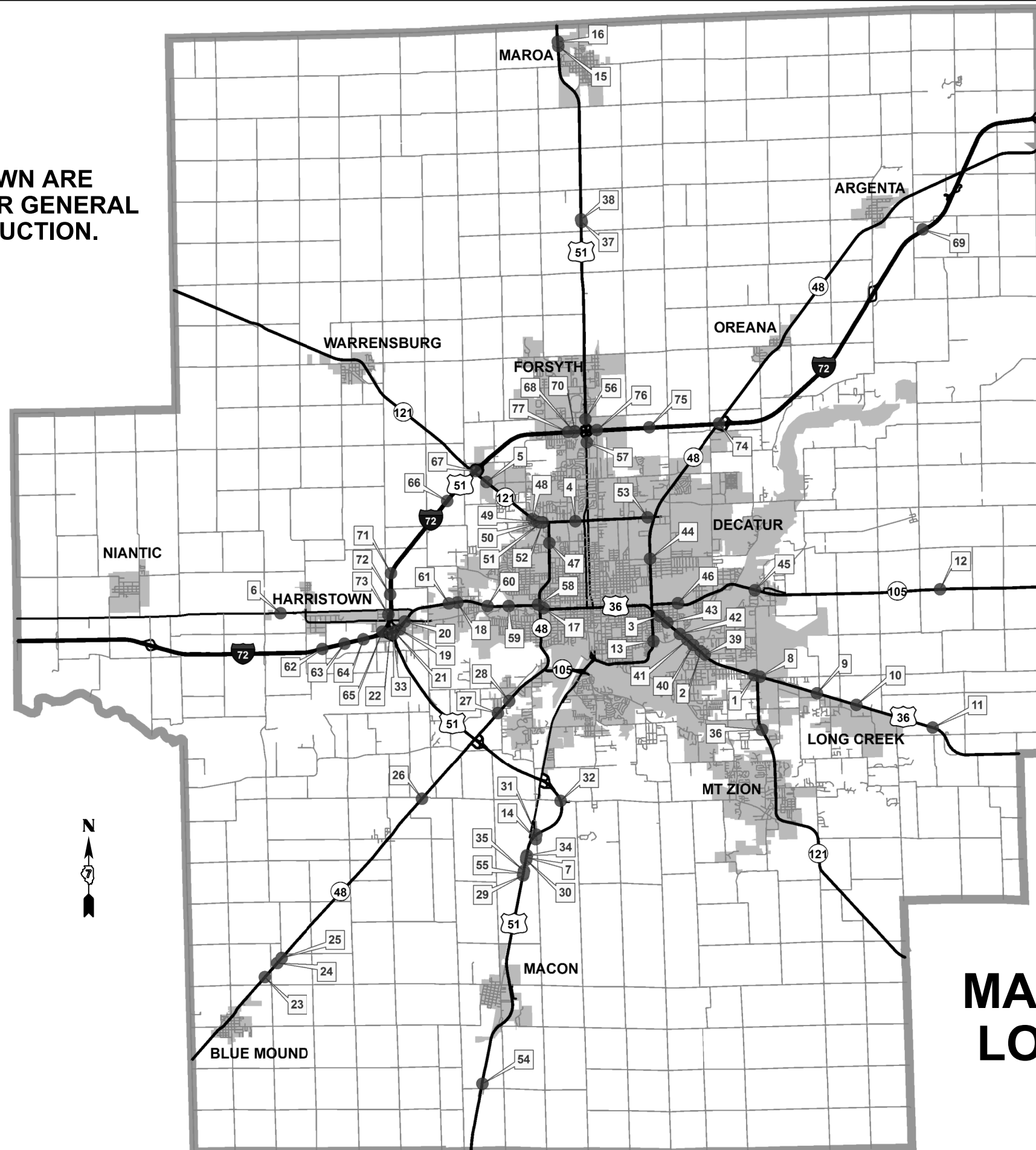
- 1 COVER SHEET
- 2 INDEX OF SHEETS AND GENERAL NOTES
- 3 SUMMARY OF QUANTITIES
- 4 MAP OF MACON COUNTY LOCATIONS
- 5-11 MACON COUNTY REPLACEMENTS
- 12 MAP OF MOULTRIE COUNTY LOCATIONS
- 13-15 MOULTRIE COUNTY REPLACEMENTS
- 16 MAP OF SHELBY COUNTY LOCATIONS
- 17-18 SHELBY COUNTY REPLACEMENTS

THE FOLLOWING STANDARDS ARE A PART OF THESE PLANS AND ARE INCLUDED AFTER SHEET NO. 18:

- 000001-06 STANDARD SYMBOLS, ABBREVIATIONS AND PATTERNS
- 630001-10 STEEL PLATE BEAM GUARDRAIL
- 630301-06 SHOULDER WIDENING FOR TYPE 1 (SPECIAL) GUARDRAIL TERMINALS
- 631011-09 TRAFFIC BARRIER TERMINAL, TYPE 2
- 701001-02 OFF-ROAD OPERATIONS, 2L, 2W, MORE THAN 15' AWAY
- 701006-05 OFF-ROAD OPERATIONS, 2L, 2W, 15' TO 24" FROM PAVEMENT EDGE
- 701011-04 OFF-ROAD MOVING OPERATION, 2L, 2W, DAY ONLY
- 701101-05 OFF-ROAD OPERATIONS, MULTILANE, 15' TO 24" FROM PAVEMENT EDGE
- 701106-02 OFF-ROAD OPERATIONS, MULTILANE, MORE THAN 15' AWAY
- 701201-04 LANE CLOSURE, 2L, 2W, DAY ONLY, FOR SPEEDS >= 45 MPH
- 701301-04 LANE CLOSURE, 2L, 2W, SHORT TIME OPERATIONS
- 701400-08 APPROACH TO LANE CLOSURE, FREEWAY/EXPRESSWAY
- 701406-10 LANE CLOSURE, FREEWAY/EXPRESSWAY, DAY OPERATIONS ONLY
- 701411-09 LANE CLOSURE, MULTILANE, AT ENTRANCE OR EXIT RAMP, FOR SPEED >= 45 MPH
- 701421-07 LANE CLOSURE, MULTILANE, DAY OPERATIONS ONLY, FOR SPEEDS >=45 MPH TO 55 MPH
- 701428-01 TRAFFIC CONTROL, SETUP AND REMOVAL, FREEWAY/EXPRESSWAY
- 701456-03 PARTIAL EXIT RAMP CLOSURE FREEWAY/EXPRESSWAY
- 701501-06 URBAN LANE CLOSURE, 2L, 2W UNDIVIDED
- 701502-06 URBAN LANE CLOSURE, 2L, 2W, WITH BIDIRECTIONAL LEFT TURN LANE
- 701601-09 URBAN LANE CLOSURE, MULTILANE, 1W OR 2W WITH NONTRAVERSABLE MEDIAN
- 701602-07 URBAN LANE CLOSURE, MULTILANE, 2W WITH BIDIRECTIONAL LEFT TURN LANE
- 701606-10 URBAN SINGLE LANE CLOSURE MULTILANE, 2W WITH MOUNTABLE MEDIAN
- 701611-01 URBAN HALF ROAD CLOSURE, MULTILANE, 2W WITH MOUNTABLE MEDIAN
- 701701-10 URBAN LANE CLOSURE, MULTILANE INTERSECTION
- 701901-05 TRAFFIC CONTROL DEVICES
- 725001 OBJECT AND TERMINAL MARKERS
- 782006 GUARDRAIL AND BARRIER WALL REFLECTOR MOUNTING DETAILS

FILE NAME :	USER NAME = steffanrk	DESIGNED -	REVISED -	STATE OF ILLINOIS DEPARTMENT OF TRANSPORTATION	INDEX OF SHEETS & GENERAL NOTES			F.A. RTE.	SECTION	COUNTY	TOTAL SHEETS	SHEET NO.	
Default	PLOT SCALE = 68.8900' / in.	CHECKED -	REVISED -					SCALE:	SHEET	OF	SHEETS	STA.	TO STA.
	PLOT DATE = 3/18/2016	DATE -	REVISED -		ILLINOIS FED. AID PROJECT								
					*D7 GUARDRAIL IMPROVEMENTS 2016-1 MACON, MOULTRIE, SHELBY								

TERMINAL LOCATIONS SHOWN ARE APPROXIMATE AND ARE FOR GENERAL INFORMATION FOR CONSTRUCTION.



MACON COUNTY LOCATION MAP

FILE NAME =	USER NAME = steffenmk	DESIGNED -	REVISED -	STATE OF ILLINOIS DEPARTMENT OF TRANSPORTATION		MACON COUNTY LOCATION MAP		F.A. RTE.	SECTION	COUNTY	TOTAL SHEETS	SHEET NO.
pw:\IL\084EBIDINTEG.illinois.gov\PWIDOT\Documents\IDOT Offices\District 7\Projects\74750\Drawings\CAD\Sheets\0774750-sht-schedule	PLotted SCALE = 100.0000' / in.	CHECKED -	REVISED -									
Default	PLOT DATE = 3/18/2016	DATE -	REVISED -	SCALE:		SHEET	OF	SHEETS	STA.	TO	STA.	CONTRACT NO. 74750
											ILLINOIS FED. AID PROJECT	
											*07 GUARDRAIL IMPROVEMENTS 2016-1	
											MACON, MOULTRIE, SHELBY	

MACON COUNTY

Map Location	Route	Terminal Location	Structure No/ Intersection	LATITUDE	LONGITUDE	GUARDRAIL REMOVAL (FOOT)	TRAFFIC BARRIER TERMINAL, TYPE 1 (SPECIAL) TANGENT (EACH)	TRAFFIC BARRIER TERMINAL, TYPE 1 (SPECIAL) FLARED (EACH)	FURNISHED EXCAVATION (CU YD)	STEEL PLATE BEAM GUARDRAIL, TYPE A 6 FOOT POSTS (FOOT)	TRAFFIC BARRIER TERMINAL, TYPE 2 (EACH)	VERTICAL ADJUSTMENT OF GUARDRAIL (FOOT)
1	US 36	W of Airport Rd	US 36 WB -W end	39.82126152	-88.87932439	12.5					1	12.5
	US 36	W of Airport Rd	US 36 EB -E end	39.82121858	-88.87935511	12.5					1	25
	US 36	W of Airport Rd	US 36 EB -W end	39.82131621	-88.87974864	50	1					12.5
2	US 36	West end	Greenhill Rd	39.82991808	-88.90408917	12.5					1	37.5
3	US 36	NW Quad	Main & US 36	39.84261002	-88.92298751	50	1		10			0
4	IL 121	NW Quad	058-0050	39.87662930	-88.96104452	25						25
	IL 121	SE Quad	058-0050	39.87640837	-88.96045491	25						25
5	IL 121	SE Quad	058-8632	39.89077786	-89.00100541	25	1					12.5
	IL 121	NE Quad	058-8632	39.89091181	-89.00122737	12.5					1	0
6	Harristown Blvd	SW Quad	058-8646	39.84520653	-89.09696962	50	1					37.5
	Harristown Blvd	NE Quad	058-8646	39.84534360	-89.09620056	50	1					12.5
	Harristown Blvd	SE Quad	058-8646	39.84521024	-89.09633572	50	1					37.5
7	US 51	SB S end OH sign	S of BUS 51	39.75767255	-88.98522384	12.5					1	0
	US 51	NB N end OH sign	S of BUS 51	39.75762593	-88.98514163	12.5					1	37.5
8	US 36	WB SW OH sign	E of IL 121	39.82067613	-88.87699672	12.5					1	12.5
	US 36	WB SE OH sign	E of IL 121	39.82058267	-88.87660024	50	1					12.5
	US 36	WB NE OH sign	E of IL 121	39.82072383	-88.87658679	50	1					12.5
	US 36	WB NW OH sign	E of IL 121	39.82087902	-88.87723719	12.5					1	12.5
9	US 36	SW Quad	058-0021	39.81439439	-88.85086321	50	1		10			25
	US 36	NW Quad	058-0021	39.81458382	-88.85106400	50	1					0
10	US 36	SW Quad	058-0022	39.81029939	-88.83390504	50	1		10			0
	US 36	NW Quad	058-0022	39.81036064	-88.83355267	50	1					12.5
	US 36	NE Quad	058-0022	39.81009707	-88.83247036	50	1					0
	US 36	SE Quad	058-0022	39.80985186	-88.83205735	50	1		10			12.5

MACON COUNTY cont.

Map Location	Route	Terminal Location	Structure No/ Intersection	LATITUDE	LONGITUDE	GUARDRAIL REMOVAL (FOOT)	TRAFFIC BARRIER TERMINAL, TYPE 1 (SPECIAL) TANGENT (EACH)	TRAFFIC BARRIER TERMINAL, TYPE 1 (SPECIAL) FLARED (EACH)	FURNISHED EXCAVATION (CU YD)	STEEL PLATE BEAM GUARDRAIL, TYPE A 6 FOOT POSTS (FOOT)	TRAFFIC BARRIER TERMINAL, TYPE 2 (EACH)	VERTICAL ADJUSTMENT OF GUARDRAIL (FOOT)
11	US 36	SW Quad	058-0023	39.80185597	-88.79890507	25	1					37.5
	US 36	NW Quad	058-0023	39.80204325	-88.79910513	37.5	1					12.5
	US 36	SE Quad	058-0023	39.80159808	-88.79783151	50	1					25
	US 36	NE Quad	058-0023	39.80159347	-88.79727503	50	1					25
12	IL 105	NE Quad	058-0044	39.85060459	-88.79360196	12.5	1					25
	IL 105	SE Quad	058-0044	39.85048017	-88.79365434	12.5	1					12.5
	IL 105	SW Quad	058-0044	39.85046215	-88.79414825	12.5	1					25
	IL 105	NW Quad	05-80044	39.85058928	-88.79409764	12.5	1					12.5
13	IL 105	NE Quad	22nd & Cantrell	39.83367800	-88.92577668	50	1					50
14	Bus 51	SE Quad	058-0122	39.76422921	-88.98071799	50	1					12.5
	Bus 51	SW Quad	058-0122	39.76397975	-88.98097135	50	1					0
15	US 51	SW Quad	058-0118	40.04428495	-88.96569603	50	1					50
16	US 51	NE Quad	058-0117	40.04593939	-88.96587103	50	1					12.5
17	US 36	SE Quad	058-0127	39.84591717	-88.97588421	12.5					1	62.5
18	US 36	SE END	W of Sunnyside Rd	39.84832065	-89.01529389	12.5					1	37.5
19	US 36	SW US 36-51 ramp		39.83905383	-89.04185085	50	1					12.5
20	US 36	NW US 36-51 ramp		39.84186673	-89.03925735	25				12.5	1	25
	US 36	NW WB US 36 OH sign		39.84204665	-89.03935534	175	1			112.5	1	0
	US 36	SW EB US 36 OH sign		39.84160467	-89.03975940	175	1			112.5	1	0
	US 36	NW WB US 36 OH sign		39.84187264	-89.03982653	25	1			162.5		0
	US 36	SW WB US 36 OH sign		39.84134528	-89.04039318	25				12.5	1	25
21	US 36	NE Quad	058-0106	39.83848748	-89.04454374	50	1					25
	US 36	SE Quad	058-0106	39.83831836	-89.04421888	50		1				0

MACON COUNTY cont.

Map Location	Route	Terminal Location	Structure No/ Intersection	LATITUDE	LONGITUDE	GUARDRAIL REMOVAL (FOOT)	TRAFFIC BARRIER TERMINAL, TYPE 1 (SPECIAL) TANGENT (EACH)	TRAFFIC BARRIER TERMINAL, TYPE 1 (SPECIAL) FLARED (EACH)	FURNISHED EXCAVATION (CU YD)	STEEL PLATE BEAM GUARDRAIL, TYPE A 6 FOOT POSTS (FOOT)	TRAFFIC BARRIER TERMINAL, TYPE 2 (EACH)	VERTICAL ADJUSTMENT OF GUARDRAIL (FOOT)
22	US 36	NW Quad	058-0107	39.83782655	-89.04657897	50		1				75
	US 36	SW Quad	058-0107	39.83757733	-89.04624158	50	1					25
23	IL 48	SE Quad	058-0030	39.71612903	-89.10618832	50	1		10			25
	IL 48	SW Quad	058-0030	39.71632411	-89.10619918	50	1					12.5
	IL 48	NE Quad	058-0030	39.71690951	-89.10527595	50	1					25
	IL 48	NW Quad	058-0030	39.71699993	-89.10540518	50	1					37.5
24	IL 48	SE Quad box S of	058-0029	39.72099313	-89.10051877	50	1		10			0
	IL 48	SW Quad box S of	058-0029	39.72121460	-89.10045835	50	1		10			0
	IL 48	NE Quad box S of	058-0029	39.72171307	-89.09967355	50	1		10			12.5
	IL 48	NW Quad box S of	058-0029	39.72193356	-89.09961414	50	1		10			0
25	IL 48	SE Quad	058-0029	39.72268895	-89.09852355	50	1					0
	IL 48	SW Quad	058-0029	39.72292418	-89.09846343	50	1		10			12.5
	IL 48	NE Quad	058-0029	39.72362094	-89.09743246	50	1					12.5
	IL 48	NW Quad	058-0029	39.72385430	-89.09737171	50	1		10			25
26	IL 48	SE Quad	058-8639	39.77888604	-89.03261673	50	1					25
27	IL 48	S of Forest Crest Rd - S end		39.80830994	-88.99802929	50	1					0
	IL 48	S of Forest Crest Rd - N end		39.80963478	-88.99646439	50	1					25
28	IL 48	NE Quad	058-8641	39.81324395	-88.99221707	100	1					37.5
29	US 51 NB	S END @ O.H. SIGN		39.75137061	-88.98683591	37.5	1					25
30	US 51 NB	S END @ O.H. SIGN BASE		39.75685129	-88.98536629	50	1					12.5
31	US 51 NB	S END	058-0122	39.76506335	-88.98129549	50	1					25
	US 51 SB	N END	058-0123	39.76603188	-88.97976728	50	1					25
	US 51 NB	E END NB 51 UNDER BUS 51 PIER PROTECTION	058-0123 & 058-0122	39.76564227	-88.98034891	12.5					1	0
	US 51 SB	W END SB 51 UNDER BUS 51 PIER PROTECTION	058-0122	39.76549305	-88.98075376	12.5					1	12.5

MACON COUNTY cont.

Map Location	Route	Terminal Location	Structure No/ Intersection	LATITUDE	LONGITUDE	GUARDRAIL REMOVAL (FOOT)	TRAFFIC BARRIER TERMINAL, TYPE 1 (SPECIAL) TANGENT (EACH)	TRAFFIC BARRIER TERMINAL, TYPE 1 (SPECIAL) FLARED (EACH)	FURNISHED EXCAVATION (CU YD)	STEEL PLATE BEAM GUARDRAIL, TYPE A 6 FOOT POSTS (FOOT)	TRAFFIC BARRIER TERMINAL, TYPE 2 (EACH)	VERTICAL ADJUSTMENT OF GUARDRAIL (FOOT)
32	US 51 NB	S END	058-0124	39.77704297	-88.96891869	37.5	1					37.5
	US 51 SB	N END	058-0124	39.77812394	-88.96943771	50	1					25
	US 51 NB	N END PIER PROTECTION	UNDER 058-0124, ELWIN RD	39.77763758	-88.96912136	12.5					1	12.5
	US 51 SB	S END PIER PROTECTION	UNDER 058-0124, ELWIN RD	39.77751867	-88.96916729	12.5					1	12.5
33	US 51 NB	S END @ O.H. SIGN		39.83713387	-89.04481037	50	1					25
	US 51 NB	N END @ OH SIGN		39.83746914	-89.04488146	12.5					1	25
34	US 51 SB	N END, OH SIGN BASE		39.75845379	-88.98500298	37.5	1					25
35	US 51 SB	N END, OH SIGN BASE		39.75300316	-88.98647130	50	1					25
36	IL 121	NW END	058-0055	39.80229401	-88.87682544	25	1					25
	IL 121	SW END	058-0055	39.80115984	-88.87617499	25	1					25
	IL 121	SE END	058-0055	39.80125573	-88.87589118	50	1					25
	IL 121	NE END	058-0055	39.80240604	-88.87655066	25	1					25
37	US 51 NB	SE END	058-0114	39.98211729	-88.95602072	50	1					25
38	US 51 SB	NE END	058-0113	39.98333394	-88.95629524	50	1					12.5
	US 51 SB	NW END	058-0113	39.98265849	-88.95645176	50	1					12.5
39	US 36	E END	GREEN HILL RD.	39.82864319	-88.90216220	50	1					0
40	US 36	E END	C.C. RD.	39.83220247	-88.90747046	50	1					25
	US 36	SE END	W OF C.C. RD	39.83198092	-88.90774936	12.5					1	25
41	US 36	NE END	STR 058-0020	39.83403000	-88.91022500	50	1					25
42	US 36	NE END	058-0019	39.83601869	-88.91317522	25	1					25
	US 36	SW END	058-0019	39.83637833	-88.91405333	50	1					25
	US 36	W END	BETWEEN 0019 & 0020	39.83588508	-88.91334686	50	1					25
43	US 36	E END	SIGN BASE	39.84021309	-88.91934109	50	1					25

MACON COUNTY cont.

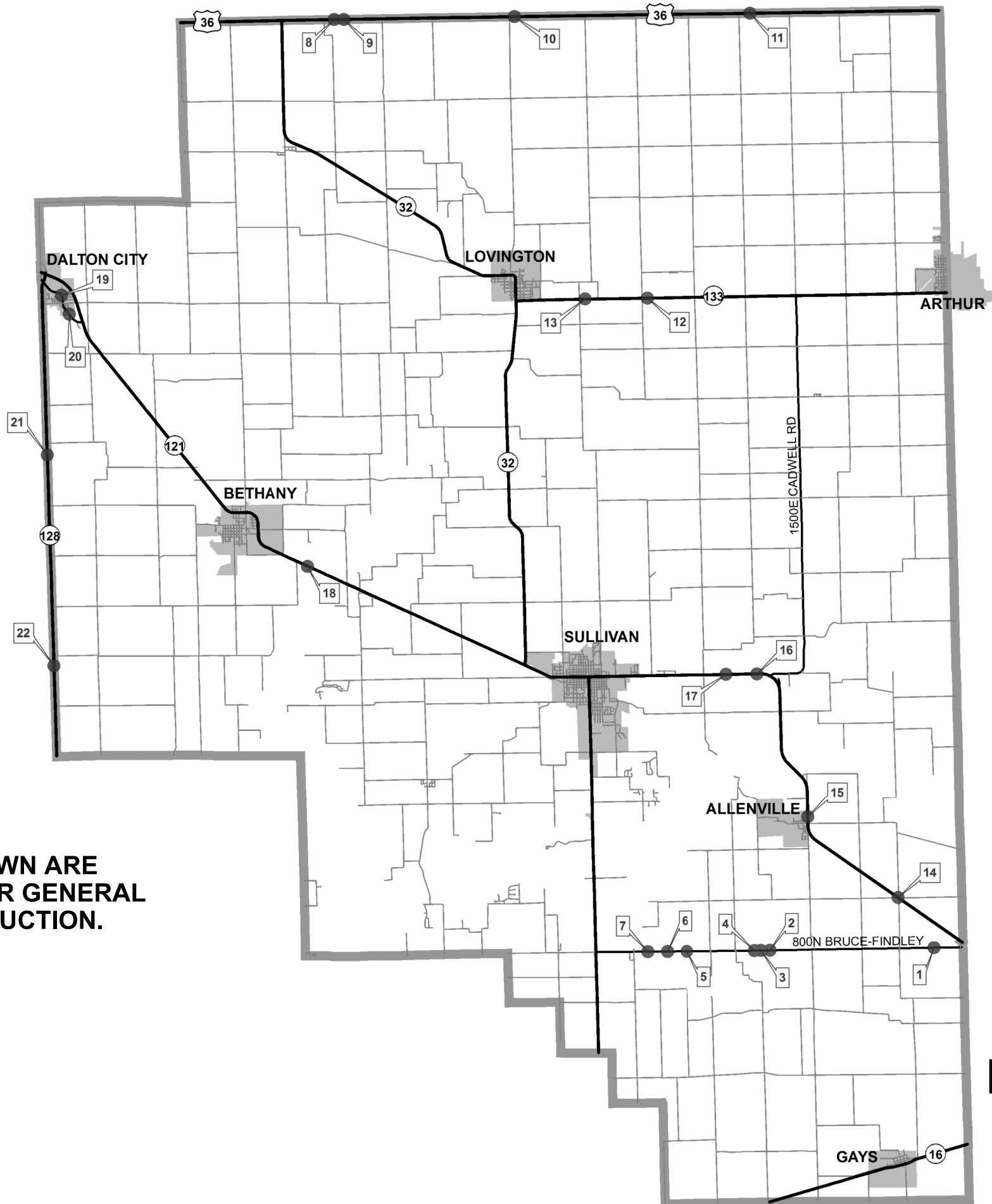
Map Location	Route	Terminal Location	Structure No/ Intersection	LATITUDE	LONGITUDE	GUARDRAIL REMOVAL (FOOT)	TRAFFIC BARRIER TERMINAL, TYPE 1 (SPECIAL) TANGENT (EACH)	TRAFFIC BARRIER TERMINAL, TYPE 1 (SPECIAL) FLARED (EACH)	FURNISHED EXCAVATION (CU YD)	STEEL PLATE BEAM GUARDRAIL, TYPE A 6 FOOT POSTS (FOOT)	TRAFFIC BARRIER TERMINAL, TYPE 2 (EACH)	VERTICAL ADJUSTMENT OF GUARDRAIL (FOOT)
44	IL 121	SE END	058-0120	39.86263866	-88.92666173	25	1					37.5
	IL 121	NE END	058-0120	39.86302918	-88.92667384	50	1					37.5
	IL 121	NW END	058-0120	39.86306079	-88.92690306	50	1					37.5
	IL 121	SW END	058-0120	39.86265969	-88.92689534	50	1					37.5
45	IL 105	SE END	058-0047	39.85123035	-88.87875510	12.5				1		25
46	IL 105	EAST END-WEST OF	E. WILLIAMS ST.	39.84696384	-88.91379005	50	1					25
	IL 105	WEST END-WEST OF	E. WILLIAMS ST.	39.84706715	-88.91485130	50	1					25
47	IL 48	SE END	RR OVERHEAD	39.86885219	-88.97284452	50	1					37.5
48	IL 121	W END	GLENN DR.	39.87739825	-88.98046608	50	1					37.5
49	IL 121	E END	PERSHING RD	39.87647614	-88.97848699	50	1					62.5
	IL 121	W END	PERSHING RD	39.87639122	-88.97818883	50	1					62.5
50	IL 121	E END	WILSON ST	39.87620977	-88.97719440	50	1					62.5
	IL 121	E END	WILSON ST	39.87619101	-88.97682413	50	1					62.5
51	IL 121	E END	P.E.	39.87616703	-88.97652279	50	1					37.5
	IL 121	W END	P.E.	39.87616638	-88.97638810	50	1					37.5
52	IL 121	E END	UNIVERSITY DR	39.87616149	-88.97570401	50	1					37.5
53	IL 121	SW END	058-8633	39.87735989	-88.92816317	50	1					25
	IL 121	SE END	058-8633	39.87738983	-88.92762961	50	1					25
	IL 121	NE END	058-8633	39.87763000	-88.92735667	50	1					25
	IL 121	NW END	058-8633	39.87760940	-88.92789624	50	1					25
54	US 51 NB	NE quad	058-0125	39.67853218	-89.00641712	12.5					1	12.5
	US 51 NB	NW quad	058-0125	39.67820633	-89.00663349	12.5					1	25
	US 51 SB	SE quad	058-0126	39.67772488	-89.00685773	12.5					1	12.5
	US 51 SB	SW quad	058-0126	39.67716660	-89.00712697	12.5					1	12.5

MACON COUNTY cont.

Map Location	Route	Terminal Location	Structure No/ Intersection	LATITUDE	LONGITUDE	GUARDRAIL REMOVAL (FOOT)	TRAFFIC BARRIER TERMINAL, TYPE 1 (SPECIAL) TANGENT (EACH)	TRAFFIC BARRIER TERMINAL, TYPE 1 (SPECIAL) FLARED (EACH)	FURNISHED EXCAVATION (CU YD)	STEEL PLATE BEAM GUARDRAIL, TYPE A 6 FOOT POSTS (FOOT)	TRAFFIC BARRIER TERMINAL, TYPE 2 (EACH)	VERTICAL ADJUSTMENT OF GUARDRAIL (FOOT)
55	US 51 NB	N END NBL @ OH SIGN		39.75213930	-88.98661442	12.5					1	12.5
	US 51 SB	S END SBL @ OH SIGN		39.75222398	-88.98668842	12.5					1	12.5
56	US 51	S END @ OH SIGN	I72 WB ON RAMP	39.91242383	-88.95553998	12.5					1	37.5
57	Bus 51	N END @ OH SIGN	I72 EB ON RAMP	39.90430823	-88.95504541	12.5					1	12.5
58	US 36	NW quad, US 36 WB	058-0127	39.84717354	-88.97841164	12.5					1	0
59	US 36	SE quad, US 36 EB	058-0128	39.84675377	-88.99072614	12.5					1	25
	US 36	NW quad, US 36 WB	058-0128	39.84694969	-88.99292319	12.5					1	25
60	US 36	SE quad -US 36 EB	E of Moffet Ln	39.84688637	-89.00153380	12.5					1	25
61	US 36	SE quad, US 36 EB	058-8649	39.84804254	-89.01780915	12.5					1	37.5
	US 36	NW quad, US 36 WB	058-8649	39.84805630	-89.02043032	12.5					1	12.5
62	I 72 EB	NE END EB @ OH SIGN		39.83254320	-89.07738038	12.5					1	0
	I 72 EB	SE END EB @ OH SIGN		39.83243805	-89.07731440	12.5					1	0
63	I 72 EB	SE END EB @ OH SIGN		39.83418357	-89.06717635	12.5					1	12.5
	I 72 EB	NE END EB @ OH SIGN		39.83432008	-89.06725246	12.5					1	12.5
64	I 72 EB	SE END EB @ OH SIGN		39.83567064	-89.05848104	12.5					1	25
	I 72 EB	NE END EB @ OH SIGN		39.83584251	-89.05857039	12.5					1	0
65	I 72 EB	SE quad	058-0066	39.83833625	-89.04976802	12.5					1	12.5
66	I 72 EB	SE END @ OH SIGN		39.88417305	-89.01931370	12.5					1	12.5
	I 72 EB	NE END @ OH SIGN		39.88423630	-89.01943976	12.5					1	12.5
67	I 72 EB	SE quad	058-0074	39.89459706	-89.00601911	12.5					1	0
	I 72 EB	NE quad	058-0074	39.89470242	-89.00624886	12.5					1	0
68	I 72 EB	SE @ OH SIGN		39.90789161	-88.96066540	12.5					1	25
	I 72 EB	NE @ OH SIGN		39.90803973	-88.96079392	12.5					1	25
69	I 72 WB	NW quad	058-0094	39.97773046	-88.79930589	12.5					1	0
70	I 72 WB	W END WB	MEDIAN @ OH SIGN	39.90818939	-88.96047510	12.5					1	25

MACON COUNTY cont.

Map Location	Route	Terminal Location	Structure No/ Intersection	LATITUDE	LONGITUDE	GUARDRAIL REMOVAL (FOOT)	TRAFFIC BARRIER TERMINAL, TYPE 1 (SPECIAL) TANGENT (EACH)	TRAFFIC BARRIER TERMINAL, TYPE 1 (SPECIAL) FLARED (EACH)	FURNISHED EXCAVATION (CU YD)	STEEL PLATE BEAM GUARDRAIL, TYPE A 6 FOOT POSTS (FOOT)	TRAFFIC BARRIER TERMINAL, TYPE 2 (EACH)	VERTICAL ADJUSTMENT OF GUARDRAIL (FOOT)
71	I 72 WB	SW WB	OVERHEAD SIGN	39.85894321	-89.04554675	12.5					1	12.5
	I 72 WB	SE WB	OVERHEAD SIGN	39.85891719	-89.04540437	12.5					1	0
72	I 72 WB	SW WB	OVERHEAD SIGN	39.85138216	-89.04613816	12.5					1	12.5
	I 72 WB	SE WB	OVERHEAD SIGN	39.85139201	-89.04594256	12.5					1	12.5
73	I 72 WB	SW WB	OVERHEAD SIGN	39.84429158	-89.04709258	12.5					1	12.5
	I 72 WB	SE WB	OVERHEAD SIGN	39.84427489	-89.04685157	12.5					1	0
74	I 72 WB	SE Quad	058-0085	39.91029856	-88.89314531	50		1				25
	I 72 EB	NW Quad	058-0084	39.91020600	-88.89590070	50		1				25
75	I 72 WB	SE Quad	058-0083	39.90925102	-88.92543061	50		1				0
	I 72 EB	NW Quad	058-0082	39.90920975	-88.92708800	50		1				0
76	I 72 WB	NW Quad exit 141b	E of US 51	39.90868633	-88.95033042	12.5					1	0
	I 72 WB	SW Quad exit 141b	E of US 51	39.90851368	-88.95048822	12.5					1	12.5
	I 72 EB	NE Quad on ramp 141b	E of US 51	39.90837926	-88.95042488	12.5					1	25
77	I 72 WB	SE Quad	058-0078	39.90804507	-88.96271102	50		1				0
	I 72 EB	NW Quad	058-0077	39.90799251	-88.96450273	50		1				25
				Macon	TOTALS:	5637.5	91	8	110	412.5	59	3175



TERMINAL LOCATIONS SHOWN ARE APPROXIMATE AND ARE FOR GENERAL INFORMATION FOR CONSTRUCTION.

MOULTRIE COUNTY LOCATION MAP

FILE NAME =	USER NAME = steffenmk	DESIGNED -	REVISED -
pw:\IL\084EBIDINTEG.illinois.gov\PI\DOT\Documents\DOT Offices\District 7\Projects\74750\Drawings\CAD\Sheets\0774750-sht-schedule		DRAWN -	REVISED -
Default	PLOT SCALE = 100.0000' / in.	CHECKED -	REVISED -
	PLOT DATE = 3/18/2016	DATE -	REVISED -

STATE OF ILLINOIS
DEPARTMENT OF TRANSPORTATION

MOULTRIE COUNTY LOCATION MAP

SCALE: SHEET OF SHEETS STA. TO STA.

F.A. RTE.	SECTION	COUNTY	TOTAL SHEETS	SHEET NO.
			18	12
			CONTRACT NO. 74750	

MOULTRIE COUNTY

Map Location	Route	Terminal Location	Structure No	Latitude	Longitude	GUARDRAIL REMOVAL (FOOT)	TRAFFIC BARRIER TERMINAL, TYPE 1 (SPECIAL) TANGENT (EACH)	TRAFFIC BARRIER TERMINAL, TYPE 1 (SPECIAL) FLARED (EACH)	FURNISHED EXCAVATION (CU YD)	STEEL PLATE BEAM GUARDRAIL, TYPE A, 6 FOOT POSTS (FOOT)	TRAFFIC BARRIER TERMINAL, TYPE 2 (EACH)	VERTICAL ADJUSTMENT OF GUARDRAIL (FOOT)
1	Bruce-Findlay Rd/800N	NE quad	070-0046	39.52047902	-88.48094966	50	1					12.5
	Bruce-Findlay Rd/800N	SE quad	070-0046	39.52035685	-88.48128525	50	1					12.5
	Bruce-Findlay Rd/800N	SW quad	070-0046	39.52035651	-88.48255305	50	1					12.5
2	Bruce-Findlay Rd/800N	NE quad, E of	070-8801	39.52056753	-88.54308508	37.5	1					25
	Bruce-Findlay Rd/800N	NW quad, E of	070-8801	39.52056752	-88.54334970	37.5	1					25
3	Bruce-Findlay Rd/800N	NE quad	070-8801	39.52057247	-88.54646171	50	1		10			25
	Bruce-Findlay Rd/800N	NW quad	070-8801	39.52057311	-88.54672572	25	1		10			25
	Bruce-Findlay Rd/800N	SW quad	070-8801	39.52046308	-88.54674172	37.5	1		10			25
4	Bruce-Findlay Rd/800N	NE quad, W of	070-8801	39.52057707	-88.54825526	50	1		10			25
	Bruce-Findlay Rd/800N	NW quad, W of	070-8801	39.52058170	-88.54975943	50	1					25
	Bruce-Findlay Rd/800N	SE quad, W of	070-8801	39.52046818	-88.54838802	50	1		10			25
5	Bruce-Findlay Rd/800N	NE quad	070-8616	39.52069663	-88.57404330	50	1		10			25
	Bruce-Findlay Rd/800N	NW quad	070-8616	39.52070070	-88.57492719	50	1		10			25
	Bruce-Findlay Rd/800N	SW quad	070-8616	39.52058915	-88.57448693	50	1		10			25
	Bruce-Findlay Rd/800N	SE quad	070-8616	39.52058685	-88.57386681	50	1		10			25
6	Bruce-Findlay Rd/800N	NE quad	070-0031	39.52073287	-88.58046049	50	1					25
	Bruce-Findlay Rd/800N	SE quad	070-0031	39.52063168	-88.58045147	50	1					0
	Bruce-Findlay Rd/800N	NW quad	070-0031	39.52075722	-88.58293946	50	1					0
	Bruce-Findlay Rd/800N	SW quad	070-0031	39.52065263	-88.58289320	50	1					37.5
7	Bruce-Findlay Rd/800N	NE quad	070-0030	39.52080302	-88.58858553	50	1					37.5
	Bruce-Findlay Rd/800N	SE quad	070-0030	39.52069948	-88.58867814	50	1					12.5
	Bruce-Findlay Rd/800N	SW quad	070-0030	39.52071222	-88.58968053	50	1					37.5
	Bruce-Findlay Rd/800N	NW quad	070-0030	39.52081187	-88.58958754	50	1					12.5

MOULTRIE COUNTY cont.

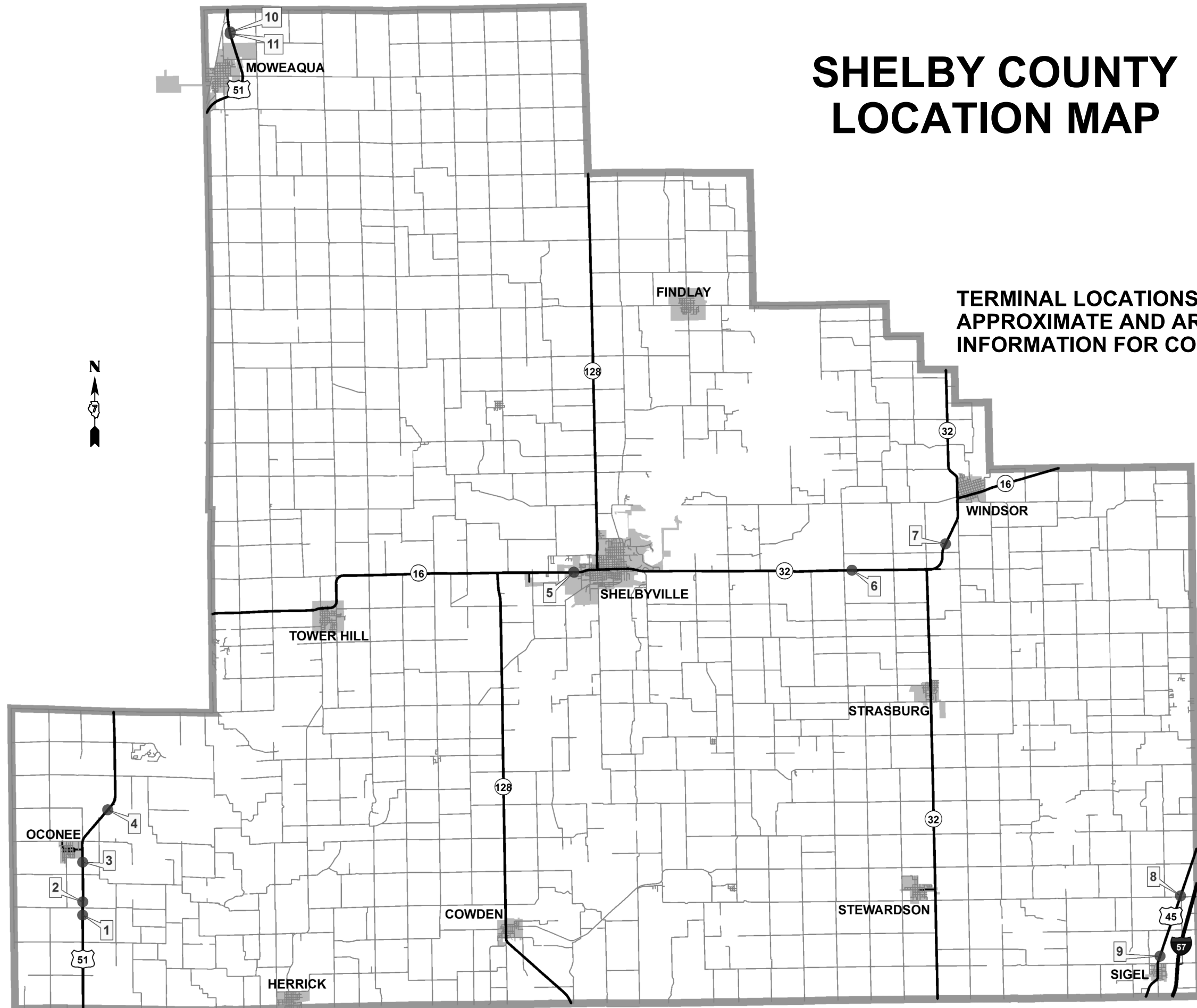
Map Location	Route	Terminal Location	Structure No	Latitude	Longitude	GUARDRAIL REMOVAL (FOOT)	TRAFFIC BARRIER TERMINAL, TYPE 1 (SPECIAL) TANGENT (EACH)	TRAFFIC BARRIER TERMINAL, TYPE 1 (SPECIAL) FLARED (EACH)	FURNISHED EXCAVATION (CU YD)	STEEL PLATE BEAM GUARDRAIL, TYPE A, 6 FOOT POSTS (FOOT)	TRAFFIC BARRIER TERMINAL, TYPE 2 (EACH)	VERTICAL ADJUSTMENT OF GUARDRAIL (FOOT)
8	US 36	SW quad	070-0025	39.79219307	-88.70096489	50	1		10			37.5
	US 36	NW quad	070-0025	39.79231037	-88.70109755	50	1		10			37.5
	US 36	SE quad	070-0025	39.79219018	-88.69995228	50	1					37.5
	US 36	NE quad	070-0025	39.79231746	-88.69986439	50	1					12.5
9	US 36	SW quad	070-0043	39.79218037	-88.69746546	50	1		10			25
	US 36	NW quad	070-0043	39.79230004	-88.69746478	50	1		10			12.5
	US 36	SE quad	070-0043	39.79217699	-88.69626560	50	1		10			12.5
	US 36	NE quad	070-0043	39.79229451	-88.69626545	50	1		10			25
10	US 36	SW quad	070-0009	39.79217404	-88.63314331	37.5	1					12.5
	US 36	NW quad	070-0009	39.79229115	-88.63314417	37.5	1					0
	US 36	NE quad	070-0009	39.79229246	-88.63273420	37.5	1					12.5
	US 36	SE quad	070-0009	39.79217381	-88.63273359	37.5	1					0
11	US 36	SW quad	070-0024	39.79193431	-88.54507030	50	1					12.5
	US 36	NW quad	070-0024	39.79207062	-88.54484794	50	1					0
	US 36	SE quad	070-0024	39.79193208	-88.54393535	50	1					0
	US 36	NE quad	070-0024	39.79206781	-88.54384522	50	1					0
12	IL 133	NE quad	070-0027	39.71015815	-88.58449362	50	1		10			25
	IL 133	SE quad	070-0027	39.71003456	-88.58453349	50	1		10			25
	IL 133	SW quad	070-0027	39.71003477	-88.58531881	50	1		10			25
	IL 133	NW quad	070-0027	39.71015834	-88.58528076	50	1		10			25
13	IL 133	NE quad, E of	1075E	39.71017579	-88.60808989	50	1					25
	IL 133	NW quad, E of	1075E	39.71017694	-88.60845604	50	1					25
14	IL 121	SE quad	070-8305	39.53523103	-88.49473716	25				12.5	1	25
	IL 121	NE quad	070-8305	39.53516816	-88.49493801	37.5	1					12.5
	IL 121	NW quad	070-8305	39.53507568	-88.49508504	50	1					0

MOULTRIE COUNTY cont.

Map Location	Route	Terminal Location	Structure No	Latitude	Longitude	GUARDRAIL REMOVAL (FOOT)	TRAFFIC BARRIER TERMINAL, TYPE 1 (SPECIAL) TANGENT (EACH)	TRAFFIC BARRIER TERMINAL, TYPE 1 (SPECIAL) FLARED (EACH)	FURNISHED EXCAVATION (CU YD)	STEEL PLATE BEAM GUARDRAIL, TYPE A, 6 FOOT POSTS (FOOT)	TRAFFIC BARRIER TERMINAL, TYPE 2 (EACH)	VERTICAL ADJUSTMENT OF GUARDRAIL (FOOT)	
15	IL 121	SE quad	070-8304	39.55840549	-88.52804986	50	1					37.5	
	IL 121	SW quad	070-8304	39.55850052	-88.52822537	50	1					25	
	IL 121	NW quad	070-8304	39.55967500	-88.52823726	50	1					25	
16	IL 121	SE quad	070-0003	39.60073137	-88.54549173	50	1					12.5	
	IL 121	NW quad	070-0003	39.60086461	-88.54684972	50	1					12.5	
	IL 121	SW quad	070-0003	39.60074127	-88.54697982	50	1					25	
17	IL 121	NW quad	070-8626	39.60084163	-88.55783321	50	1					25	
18	IL 121	NW quad	070-0002	39.63413293	-88.71384234	50	1					0	
19	ILL 121 Spur/Water St	N end of GR, N of	Water St	39.71425634	-88.80522868	50	1					25	
	ILL 121 Spur/Water St	S end of GR, N of	Water St	39.71383704	-88.80463731	50	1					0	
	ILL 121 Spur/Water St	N end of GR, S of	Water St	39.71371628	-88.80451986	50	1					12.5	
	ILL 121 Spur/Water St	S end of GR, S of	Water St	39.71318522	-88.80419962	50	1					25	
20	ILL 121 Spur/Water St	NW quad	070-2008	39.70827200	-88.80200824	37.5	1					37.5	
	ILL 121 Spur/Water St	NE quad	070-2008	39.70834166	-88.80189377	37.5	1					25	
	ILL 121 Spur/Water St	SW quad	070-2008	39.70802861	-88.80176441	37.5	1					37.5	
21	IL 128	NW quad	070-0038	39.66809557	-88.81098852	50	1					12.5	
	IL 128	NE quad	070-0038	39.66783546	-88.81080730	50	1					25	
	IL 128	SE quad	070-0038	39.66706546	-88.81079366	50	1					25	
22	IL 128	NW quad	070-0036	39.60716668	-88.80964182	50	1					12.5	
	IL 128	SW quad	070-0036	39.60603345	-88.80962055	50	1		10			12.5	
	IL 128	SE quad	070-0036	39.60577760	-88.80946083	50	1		10			12.5	
Moultrie County						TOTALS:	3262.5	68	0	210	12.5	1	1350

SHELBY COUNTY LOCATION MAP

TERMINAL LOCATIONS SHOWN ARE APPROXIMATE AND ARE FOR GENERAL INFORMATION FOR CONSTRUCTION.



FILE NAME =	USER NAME = steffenmk	DESIGNED -	REVISED -	STATE OF ILLINOIS DEPARTMENT OF TRANSPORTATION	SHELBY COUNTY LOCATION MAP			F.A. RTE.	SECTION	COUNTY	TOTAL SHEETS	SHEET NO.	
pw:\IL\084EBIDINTEG.illinois.gov\PIWIDOT\Documents\IDOT Offices\District 7\Projects\74750\Drawings\CAD\Sheets\D774750-sht-schedule.dwg		DRAWN -	REVISED -		SCALE:	SHEET	OF	SHEETS	STA.	TO STA.		18	16
Default		PLOT SCALE = 100.0000' / in.	CHECKED -		REVISED -				CONTRACT NO. 74750				
		PLOT DATE = 3/18/2016	DATE -		REVISED -				ILLINOIS FED. AID PROJECT			MACON, MOULTRIE, SHELBY	

SHELBY COUNTY

Map Location	Route	Terminal Location	Structure No	Latitude	Longitude	GUARDRAIL REMOVAL (FOOT)	TRAFFIC BARRIER TERMINAL, TYPE 1 (SPECIAL) TANGENT (EACH)	TRAFFIC BARRIER TERMINAL, TYPE 1 (SPECIAL) FLARED (EACH)	FURNISHED EXCAVATION (CU YD)	STEEL PLATE BEAM GUARDRAIL, TYPE A, 6 FOOT POSTS (FOOT)	TRAFFIC BARRIER TERMINAL, TYPE 2 (EACH)	VERTICAL ADJUSTMENT OF GUARDRAIL (FOOT)
1	US 51	SE quad	087-8639	39.25762247	-89.10036403	50	1					37.5
	US 51	SW quad	087-8639	39.25770157	-89.10055341	50	1					0
	US 51	NW quad	087-8639	39.25808740	-89.10055086	50	1					0
	US 51	NE quad	087-8639	39.25804262	-89.10036019	50	1					0
2	US 51	SE quad	087-8640	39.26333922	-89.10021557	50	1					12.5
	US 51	SW quad	087-8640	39.26358859	-89.10038180	50	1					12.5
	US 51	NW quad	087-8640	39.26414329	-89.10033885	50	1					12.5
	US 51	NE quad	087-8640	39.26389559	-89.10017256	50	1					12.5
3	US 51	SE quad	087-8302	39.28082872	-89.10002406	50	1					12.5
	US 51	SW quad	087-8302	39.28107563	-89.10021159	50	1					12.5
	US 51	NE quad	087-8302	39.28142039	-89.10003393	50	1					12.5
4	US 51	S end S of	087-0025	39.30310301	-89.08636909	50	1		10			0
	US 51	N end S of	087-0025	39.30333450	-89.08609176	50	1					12.5
	US 51	SE quad	087-0025	39.30339475	-89.08602791	50	1					25
	US 51	SW quad	087-0025	39.30343139	-89.08620943	50	1		10			0
	US 51	NE quad	087-0025	39.30416114	-89.08516590	50	1					12.5
	US 51	NW quad	087-0025	39.30432451	-89.08519329	50	1					12.5
	US 51	S end N of	087-0025	39.30463595	-89.08484908	50	1					12.5
5	IL 16	SE quad	087-0026	39.40543573	-88.82053118	50	1					37.5
	IL 16	NE quad	087-0026	39.40555872	-88.82040519	50	1					25
6	IL 16	SW quad	087-0024	39.40440885	-88.66438023	50	1					37.5
	IL 16	NW quad	087-0024	39.40454689	-88.66423326	50	1					12.5
	IL 16	SE quad	087-0024	39.40439871	-88.66256564	50	1					37.5
	IL 16	NE quad	087-0024	39.40454224	-88.66190175	50	1					25

SHELBY COUNTY cont.

Map Location	Route	Terminal Location	Structure No	Latitude	Longitude	GUARDRAIL REMOVAL (FOOT)	TRAFFIC BARRIER TERMINAL, TYPE 1 (SPECIAL) TANGENT (EACH)	TRAFFIC BARRIER TERMINAL, TYPE 1 (SPECIAL) FLARED (EACH)	FURNISHED EXCAVATION (CU YD)	STEEL PLATE BEAM GUARDRAIL, TYPE A, 6 FOOT POSTS (FOOT)	TRAFFIC BARRIER TERMINAL, TYPE 2 (EACH)	VERTICAL ADJUSTMENT OF GUARDRAIL (FOOT)	
7	IL 16	SE quad	087-8303	39.41515631	-88.61004888	50	1					12.5	
	IL 16	NE quad	087-8303	39.41546894	-88.60984792	50	1					12.5	
	IL 16	NW quad	087-8303	39.41548985	-88.61001568	50	1					12.5	
	IL 16	SW quad	087-8303	39.41517951	-88.61021773	50	1					25	
8	US 45	NE quad	087-8654	39.25928141	-88.48045643	50	1					25	
	US 45	SE quad	087-8654	39.25865699	-88.48074179	50	1					37.5	
9	US 45	NE quad	087-8653	39.23307981	-88.49262162	50	1					25	
	US 45	SE quad	087-8653	39.23235769	-88.49294869	50	1					25	
10	US 51	NE quad	087-0027	39.64445892	-89.01080724	12.5					1	0	
	US 51	NW quad	087-0027	39.64423412	-89.01089417	12.5					1	2.5	
11	US 51	SE quad	087-0028	39.64376956	-89.01089219	12.5					1	12.5	
	US 51	SW quad	087-0028	39.64347634	-89.01095959	12.5					1	12.5	
			Shelby County			TOTALS:	1650	32	0	20	0	4	577.5