

STATE OF ILLINOIS
DEPARTMENT OF TRANSPORTATION
DIVISION OF HIGHWAYS

**PROPOSED
HIGHWAY PLANS**

FAP ROUTE 566 (IL 106)
SECTION 2RS-3, 50RS-2
PROJECT: ACSTP-0566(011)
RESURFACING IL 106 FROM CO LINE TO US 67
GREENE COUNTY

C-98-044-14

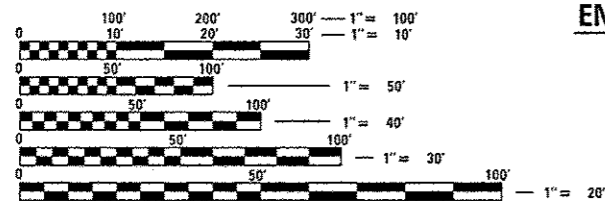
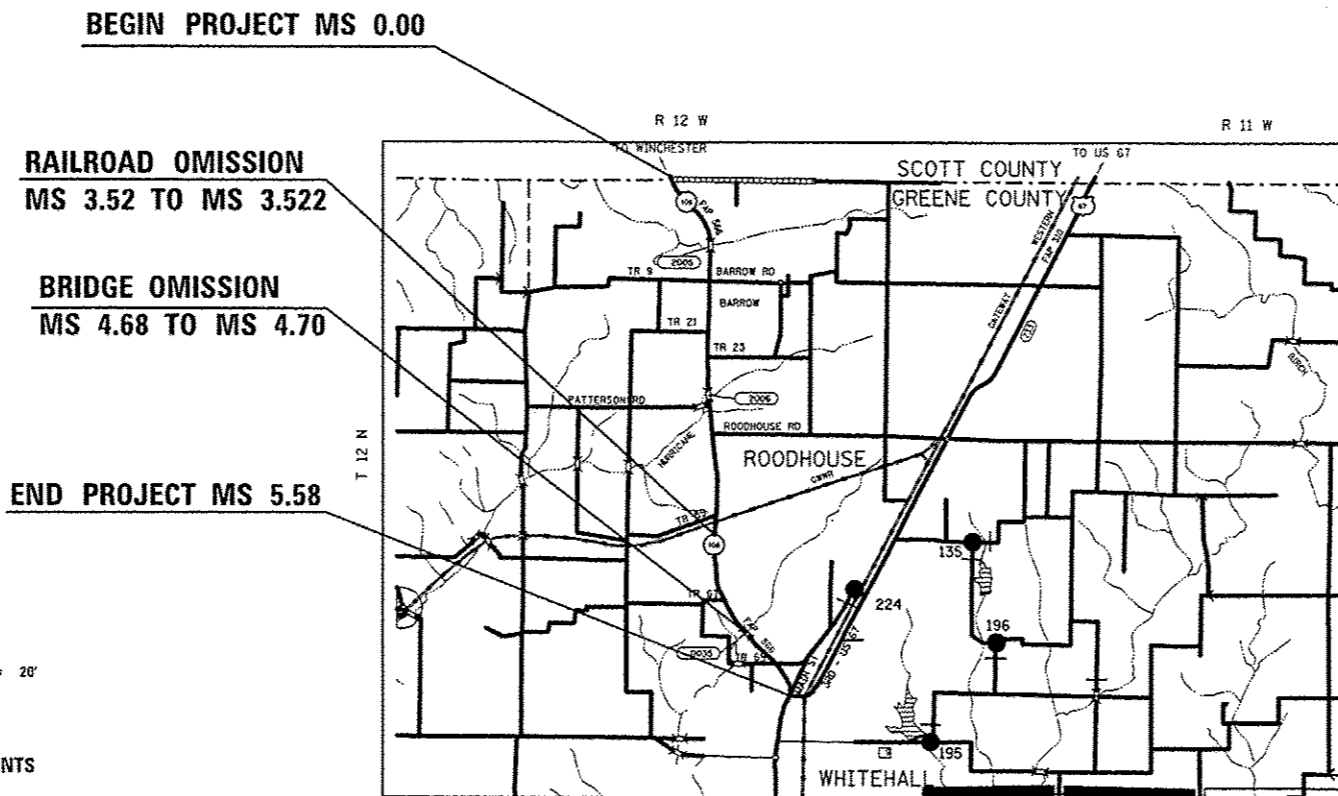
FOR INDEX OF SHEETS, SEE SHEET NO. 2

F.A.P. RTE.	SECTION	COUNTY	TOTAL SHEETS	SHEET NO.
566	2RS-3, 50RS-2	GREENE	8	1
		ILLINOIS	CONTRACT NO. 76H19	

D-98-043-14



LOCATION OF SECTION INDICATED THUS: - [rectangle] -



FULL SIZE PLANS HAVE BEEN PREPARED USING STANDARD ENGINEERING SCALES. REDUCED SIZED PLANS WILL NOT CONFORM TO STANDARD SCALES. IN MAKING MEASUREMENTS ON REDUCED PLANS, THE ABOVE SCALES MAY BE USED.

J.U.L.I.E.
JOINT UTILITY LOCATION INFORMATION FOR EXCAVATION
1-800-892-0123
OR 811

BEGINEND LAT = 39° 31'15.18 N / 39° 26'48.10" N
BEGINEND LON = 90° 25'26.82" W / 90° 24'04.36" W



GROSS LENGTH = 29,460 FT. = 5.58 MILE
NET LENGTH = 29,362 FT. = 5.56 MILE

PROJECT ENGINEER: TIM PADGETT (618)346-3325
PROJECT MANAGER: LIZ BURNSIDE (618)346-3196
CONTRACT NO. 76H19

STATE OF ILLINOIS
DEPARTMENT OF TRANSPORTATION
DIVISION OF HIGHWAYS

SUBMITTED March 15, 2016

Jeffrey T. Kan...
REGION 5 ENGINEER

Maureen M. Addis, P.E.
ENGINEER OF DESIGN AND ENVIRONMENT

May 6, 2016
DMOT ESMAN, P.E.
DIRECTOR OF HIGHWAYS CHIEF ENGINEER

**PRINTED BY THE AUTHORITY
OF THE STATE OF ILLINOIS**

GENERAL NOTES

INDEX OF SHEETS

1	COVER SHEET
2	INDEX, HIGHWAY STANDARDS, GENERAL NOTES, AND COMMITMENTS.
3	SUMMARY OF QUANTITIES
4	TYPICALS
5-6	SCHEDULE OF QUANTITIES
7-8	LOCATION MAP

STANDARDS

000001-06
001006
420001-08
442201-03
701006-05
701201-04
701301-04
701306-03
701311-03
701336-06
701901-05
780001-05
781001-04

COMMITMENTS

NONE

① UTILITIES INTERFERENCES ARE NOT ANTICIPATED ON THIS CONTRACT. IT SHALL BE THE CONTRACTOR'S RESPONSIBILITY TO COORDINATE HIS CONSTRUCTION ACTIVITIES WITH THE VARIOUS UTILITY OWNERS. ALL POTENTIAL CONFLICTS SHALL BE INVESTIGATED AND REMEDIAL ACTION TAKEN PRIOR TO INTERRUPTION OF THE CONTRACTOR'S PROGRESS. NO ADDITIONAL COST SHALL BE ADDED TO THE CONTRACT RESULTING FROM UTILITY CONFLICTS.

② THE FOLLOWING MIXTURE REQUIREMENTS ARE APPLICABLE FOR THIS PROJECT:

ROUTE	FAP 566 (IL 106)
SECTION	2RS-3, 5ORS-2
COUNTY	GREENE
CONTRACT	76H19

DESCRIPTION	IL 106 FROM SCOTT COUNTY LINE TO US 67 IN WHITE HALL
-------------	--

ADT (Construction Yr):	1200
MU%:	6
SU%:	3
20YR. ESAL'S:	0.43

MIXTURE USE	SURFACE	PATCHING
AC/PG	PG 64-22	PG 64-22
RAP % (MAX)	SEE SPEC.	SEE SPEC.
DESIGN AIR VOIDS	4.0% @ Ndes=70	4.0% @ Ndes=70
MIX COMPOSTITION		
(GRADATION MIXTURE)	IL 9.5	IL 19.0 FG
FRICTION AGG	MIXTURE "C"	MIXTURE "B"
QUALITY MGMT PROGRAM	QC/QA	QC/QA

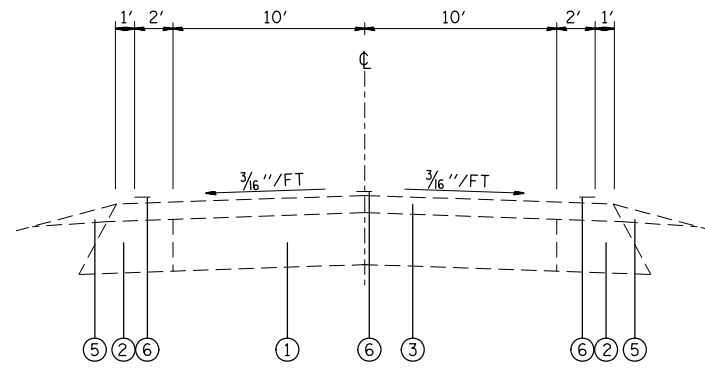
*** Top Lift Shoulders - Design this mix at 2.0% voids and add asphalt to reduce voids to 1.5%.
Plan quantities for Bituminous Concrete Surface Course Items are calculated using a unit weight of 112 lb/sq yd/in (59.8 kg/sq m/25 mm thickness).*

- ③ THE THICKNESS OF THE BITUMINOUS MIXTURE SHOWN ON THE PLANS IS THE NOMINAL THICKNESS. DEVIATIONS FROM THE NOMINAL THICKNESS WILL BE PERMITTED WHEN SUCH DEVIATIONS OCCUR DUE TO IRREGULARITIES IN THE EXISTING SURFACE OR BASE ON WHICH THE BITUMINOUS MIXTURE IS PLACED.
- ④ FLAGGERS SHALL BE PRESENT DURING ALL CLOSURE HOURS, INCLUDING LUNCH HOUR, AND NO ADDITIONAL COMPENSATION SHALL BE ALLOWED.
- ⑤ THE PROPOSED PAVEMENT MARKINGS SHALL BE PLACED IN THE SAME LOCATION AS EXISTING OR AS DIRECTED BY THE RESIDENT ENGINEER.
- ⑥ "ROAD CONSTRUCTION AHEAD" SIGNS SHALL BE PLACED AT THE BEGINNING AND END OF THE PROJECT PLUS THE INTERSECTING SIDE ROADS, AND WILL BE INCLUDED IN THE TRAFFIC CONTROL PAY ITEMS. ALL CONSTRUCTION SIGNS SHALL BE FLUORESCENT ORANGE. (48" x 48")
- ⑦ SHORT-TERM PAVEMENT MARKING SHALL BE APPLIED TO THE MILLED AND BITUMINOUS SURFACE. A QUANTITY FOR TEMPORARY PAVEMENT MARKING EQUAL TO THE AMOUNT OF PERMANENT PAVEMENT MARKING HAS BEEN ADDED TO THE PLANS. ONLY REMOVAL OF SHORT TERM PAVEMENT MARKING FROM FINAL SURFACE TO BE PAID AS 'SHORT-TERM PAVEMENT MARKING REMOVAL'.
- ⑧ THE CONTRACTOR SHALL ORGANIZE THE WORK IN THIS PROJECT TO AVOID A DROP OFF AT CENTERLINE GREATER THAN 2 INCHES BETWEEN ADJACENT OPEN TRAFFIC LANES.
- ⑨ NO OVERNIGHT LANE CLOSURES WILL BE ALLOWED.

- ⑩ ALL PATCHING ON THIS PROJECT SHALL BE COMPLETED PRIOR TO BITUMINOUS SURFACE REMOVAL.
- ⑪ THE CONTRACTOR AND ENGINEER SHALL BE AWARE THAT NO SURVEY WAS PERFORMED FOR THIS PROJECT. THE STATIONING, TOPOGRAPHY, AND QUANTITIES SHOWN IN THE PLANS WERE CREATED USING MICROFILM AND FIELD MEASUREMENTS. ALL SHALL BE ASSUMED TO BE APPROXIMATE. THE CONTRACTOR SHALL VERIFY DIMINIONS AND CONDITIONS IN THE FIELD PRIOR TO CONSTRUCTION AND ORDERING OF MATERIALS.
- ⑫ THERE IS AN ABANDONED WELL AT MS 3.6 TO BE SEALED.
- ⑬ A QUANTITY OF 10625 TONS OF MATERIAL TRANSFER DEVICE HAS BEEN ADDED TO THE PLANS.

FILE NAME #	USER NAME # BurnsideEM	DESIGNED -	REVISED -	STATE OF ILLINOIS DEPARTMENT OF TRANSPORTATION	GENERAL NOTES, STANDARDS & INDEX OF SHEETS				F.A.P. RTE.	SECTION	COUNTY	TOTAL SHEETS	SHEET NO.
pm\1188468IDNTEG:illinois.gov\FWIDOT\Documents\1007 Offices\District 8\Projects\0879\Drawings\CD\Sheets\10676H19-ht-plan.dwg	PLOT SCALE = 1/8"=1'-0"	CHECKED -	REVISED -		566	2RS-3, 5ORS-2	GREENE	8	2				
	PLOT DATE = 3/18/2016	DATE -	REVISED -		SCALE: SHEET NO. OF SHEETS STA. TO STA.				FED. ROAD DIST. NO. ILLINOIS FED. AID PROJECT				
									CONTRACT NO. 76H19				

Rev.

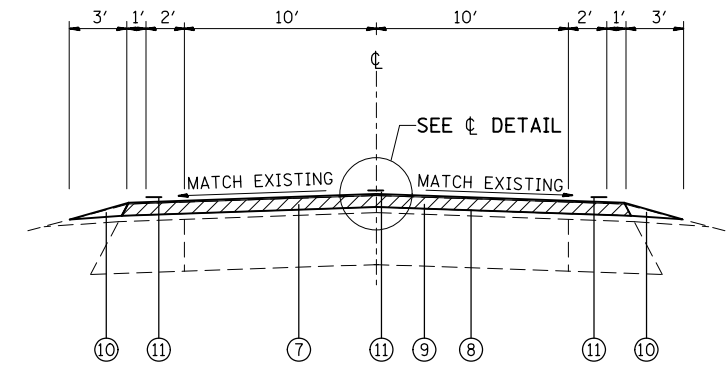


EXISTING TYPICAL TANGENT SECTION

MS 0.00 TO MS 0.60	MS 0.91 TO MS 2.19
MS 2.30 TO MS 2.39	MS 2.45 TO MS 2.58
MS 2.65 TO MS 4.60	MS 4.66 TO MS 4.71
MS 4.89 TO MS 5.56	

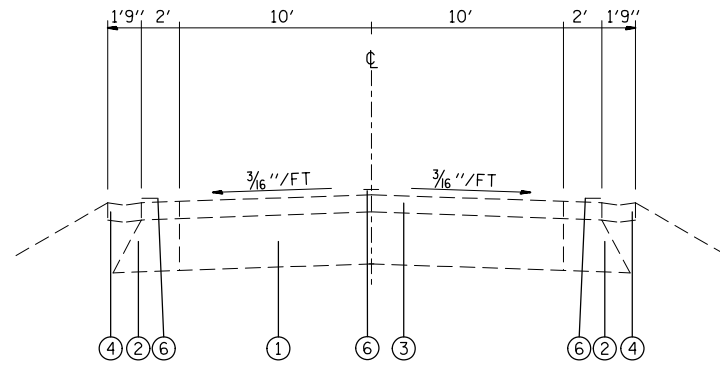
LEGEND

- ① EXISTING PAVEMENT
- ② EXISTING WIDENING, 9"
- ③ EXISTING RESURFACING, 3-3/4"
- ④ EXISTING V-GUTTER
- ⑤ EXISTING AGGREGATE SHOULDER, TYPE B
- ⑥ EXISTING PAVEMENT MARKING LINE
- ⑦ PROPOSED HMA SURFACE REMOVAL, 2"
- ⑧ PROPOSED HMA (TACK COAT)
- ⑨ PROPOSED HMA SURFACE COURSE, N70, MIX C, 2-1/4"
- ⑩ PROPOSED AGGREGATE WEDGE SHOULDER, TYPE B
- ⑪ PROPOSED PAVEMENT MARKING LINE, 4"
- ⑫ PROPOSED LONGITUDINAL JOINT SEALANT



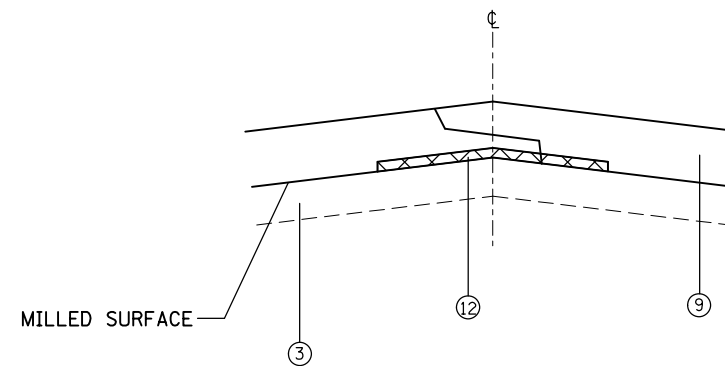
PROPOSED TYPICAL TANGENT SECTION

MS 0.00 TO MS 0.60	MS 0.91 TO MS 2.19
MS 2.30 TO MS 2.39	MS 2.45 TO MS 2.58
MS 2.65 TO MS 4.60	MS 4.66 TO MS 4.71
MS 4.89 TO MS 5.56	

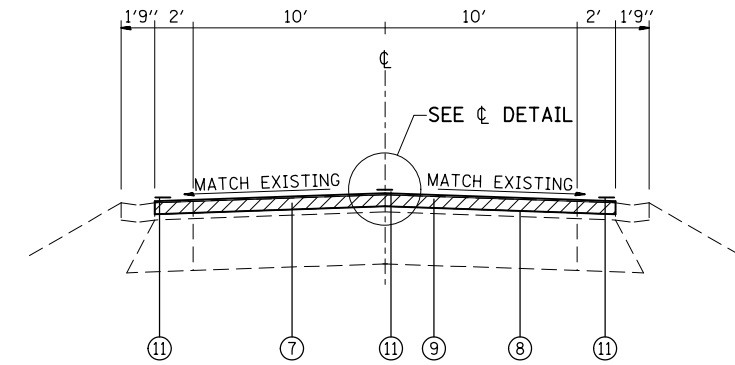


EXISTING TYPICAL GUTTER SECTION

MS 0.60 TO MS 0.91	MS 2.19 TO MS 2.30
MS 2.39 TO MS 2.45	MS 2.58 TO MS 2.65
MS 4.60 TO MS 4.66	MS 4.71 TO MS 4.89



**PROPOSED CL DETAIL
(N.T.S.)**



PROPOSED TYPICAL GUTTER SECTION

MS 0.60 TO MS 0.91	MS 2.19 TO MS 2.30
MS 2.39 TO MS 2.45	MS 2.58 TO MS 2.65
MS 4.60 TO MS 4.66	MS 4.71 TO MS 4.89

FILE NAME =	USER NAME = durosierj	DESIGNED -	REVISED -
pw:\11\084EBIDINTEG.illinois.gov\PIWIDOT\Documents\DOT Offices\District 8\Projects\0875\Drawings\CADsheets\d876h19-sh-t-plan.dwg		DRAWN -	REVISED -
	PLOT SCALE = 100.0000' / 1in.	CHECKED -	REVISED -
	PLOT DATE = 3/23/2016	DATE -	REVISED -

**STATE OF ILLINOIS
DEPARTMENT OF TRANSPORTATION**

TYPICAL SECTIONS

SCALE:	SHEET NO.	OF SHEETS	STA.	TO STA.
--------	-----------	-----------	------	---------

F.A.P. RTE.	SECTION	COUNTY	TOTAL SHEETS	SHEET NO.
566	2RS-3, 5ORS-2	GREENE	8	4
CONTRACT NO. 76H19				
FED. ROAD DIST. NO. ILLINOIS FED. AID PROJECT				

RESURFACING SCHEDULE

LOCATION			BITUMINOUS MATERIAL TACK COAT - I LIFT	HMA SURFACE COURSE, MIX "D", N70, 2-1/4"	HMA SURFACE REMOVAL, 2"	LONGITUDINAL JOINT SEALANT
STA	TO	STA	(POUND)	(TON)	(SQYD)	(FOOT)
IL 106						
0.0	TO	3.52	24161	6765	53692	18586
3.522	TO	4.68	7949	2226	17663	6114
4.71	TO	5.56	5834	1634	12965	4488
NOTCHED WEDGE*			867			
TOTAL:			38811	10625	84320	29188

* APPLICATION RATE FOR NOTCHED WEDGE - 0.025 LB/SQ.FT.

PAVEMENT PATCHING 13INCH SCHEDULE

LOCATION	LANE	LENGTH	LANE WIDTH	PAVEMENT PATCHING TYPE II	PAVEMENT PATCHING TYPE III
	(SB/NB)	(FOOT)	(FOOT)	(SQ YD)	(SQ YD)
IL 106					
0.26	(SB/NB)	6.0	26.0		17.3
1.26	NB	8.0	13.0	11.6	
3.16	(SB/NB)	8.0	26.0		23.1
4.25	(SB/NB)	8.0	26.0		23.1
4.26	(SB/NB)	8.0	26.0		23.1
SUBTOTAL:				11.6	86.7
ANTICIPATED FAILURES (15%):				1.7	13.0
TOTAL:				13	100

RAISED PAVEMENT MARKERS

LOCATION			RAISED REFLECTOR PAVEMENT MARKER TWO-WAY AMBER	RAISED REFLECTOR PAVEMENT MARKER REMOVAL
STA	TO	STA	(EACH)	(EACH)
IL 106				
0.00	TO	3.52	232	232
3.522	TO	4.68	76	76
4.68	TO	4.70	1	1
4.70	TO	5.56	57	57
TOTAL:			366	366

SHOULDER SCHEDULE

LOCATION			RT/LT	AGGREGATE WEDGE SHOULDER
STA	TO	STA		(TON)
IL 106				
0.0	TO	0.6	RT	123
0.10	TO	0.63	LT	109
0.87	TO	1.125	LT	52
1.125	TO	1.875	LT	154
1.885	TO	2.19	LT	63
0.91	TO	1.125	RT	44
1.125	TO	1.635	RT	105
1.645	TO	2.380	RT	151
2.30	TO	2.38	LT	16
2.44	TO	2.56	RT/LT	49
2.64	TO	3.515	RT	180
3.515	TO	3.52	RT	1
3.522	TO	4.394	RT	179
4.406	TO	4.55	RT	30
2.66	TO	3.52	LT	177
3.522	TO	4.53	LT	207
4.63	TO	4.68	RT	10
4.70	TO	4.74	RT	8
4.57	TO	4.68	LT	23
4.70	TO	4.81	LT	23
4.89	TO	5.20	RT	63
5.21	TO	5.56	RT	73
4.89	TO	5.20	LT	63
5.21	TO	5.49	LT	59
5.51	TO	5.515	LT	1
5.530	TO	5.56	LT	6
TOTAL:				1969

ENTRANCE SCHEDULE

LOCATION	RT/LT	CE/PE/FE	LENGTH (FOOT)	WIDTH (FOOT)	AGGREGATE SURFACE COURSE, TYPE B (TON)
IL 106					
0.1	RT	FE	3	25	1.5
0.15	LT	FE	3	25	1.5
0.2	RT	FE	3	25	1.5
0.25	RT	PE	3	25	1.5
0.25	LT	PE	3	25	1.5
0.3	LT	FE	3	25	1.5
0.4	LT	FE	3	25	1.5
0.45	RT	FE	3	25	1.5
0.69	LT	FE	3	25	1.5
0.71	RT	FE	3	25	1.5
0.92	RT	PE	3	25	1.5
1.4	LT	FE	3	25	1.5
1.69	LT	CE	3	25	1.5
1.7	LT	CE	3	25	1.5
1.9	RT	FE	3	25	1.5
1.97	RT	FE	3	25	1.5
1.99	LT	FE	3	25	1.5
2	RT	FE	3	25	1.5
2.18	LT	PE	3	25	1.5
2.2	LT	PE	3	25	1.5
2.33	LT	FE	3	25	1.5
2.5	LT	FE	3	25	1.5
2.6	LT	FE	3	25	1.5
3	LT	FE	3	25	1.5
3.09	LT	PE	3	25	1.5
3.4	LT	FE	3	25	1.5
3.4	RT	FE	3	25	1.5
3.46	RT	PE	3	25	1.5
3.58	RT	FE	3	25	1.5
3.7	RT	FE	3	25	1.5
3.87	LT	FE	3	25	1.5
4	LT	FE	3	25	1.5
4.1	RT	FE	3	25	1.5
4.13	RT	PE	3	25	1.5
4.13	LT	PE	3	25	1.5
4.15	RT	PE	3	25	1.5
4.2	LT	CE	3	25	1.5
4.21	LT	CE	3	25	1.5
4.3	RT	FE	3	25	1.5
4.3	LT	PE	3	25	1.5
4.47	LT	FE	3	25	1.5
4.55	RT	FE	3	25	1.5
4.9	LT	FE	3	25	1.5
5.4	LT	PE	3	25	1.5
5.51	LT	CE	3	25	1.5
TOTAL:					68

FILE NAME =	USER NAME = durosierj	DESIGNED -	REVISED -
pw:\IL084EBIDINTEG\illinois.gov\PIDOT\Documents\IDOT Offices\District 8\Projects\0875\DRAWING\DATA\CADsheets\d876h19-shr-plan.dwg		REVISED -	REVISED -
	PLOT SCALE = 100.0000' / 1in.	CHECKED -	REVISED -
	PLOT DATE = 3/23/2016	DATE -	REVISED -

STATE OF ILLINOIS
DEPARTMENT OF TRANSPORTATION

SCHEDULE OF QUANTITIES

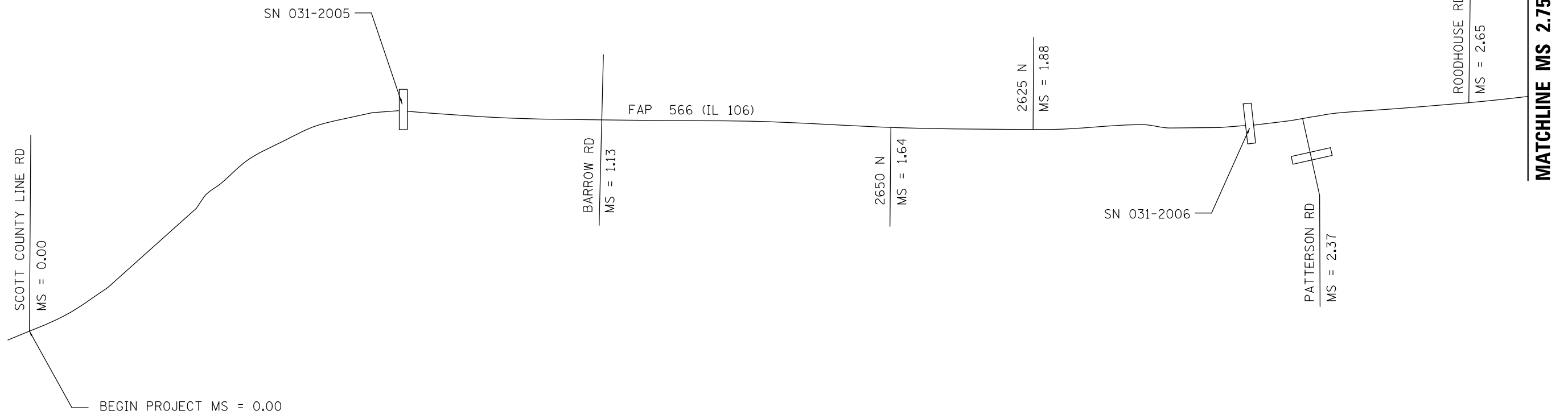
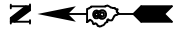
SCALE: SHEET NO. OF SHEETS STA. TO STA.

F.A.P. RTE.	SECTION	COUNTY	TOTAL SHEETS	SHEET NO.
566	2RS-3, 5ORS-2	GREENE	8	5
CONTRACT NO. 76H19				
FED. ROAD DIST. NO. ILLINOIS FED. AID PROJECT				

PAVEMENT MARKING SCHEDULE

LOCATION			THERMOPLASTIC PAVEMENT MARKING AND TEMPORARY PAVEMENT MARKING							PAVEMENT MARKING REMOVAL	SHORT-TERM PAVEMENT MARKING (2 LIFTS) (WHITE)	SHORT-TERM PAVEMENT MARKING (2 LIFTS) (YELLOW)	SHORT-TERM PAVEMENT MARKING REMOVAL
			LINE, 4" SOLID (WHITE)	LINE, 4" DOUBLE SOLID (YELLOW)	LINE, 4" SKIP-DASH (YELLOW)	LINE, 4" NB NO PASS (YELLOW)	LINE, 4" SB NO PASS (YELLOW)	LINE, 24" SOLID (WHITE)	LETTERS & SYMBOLS (WHITE)				
STA	TO	STA	FOOT	FOOT	FOOT	FOOT	FOOT	FOOT	SQ FT	SQ FT	FOOT	FOOT	SQ FT
IL 106													
0.00	TO	0.12	1267	1267						426	101	253	59
0.12	TO	0.30	1781		238	950				400	142	665	135
0.30	TO	0.50	2112		264		1056			444	169	739	151
0.50	TO	0.93	4541	4541						1517	363	908	212
0.93	TO	1.11	1901		238	950				400	152	665	136
1.11	TO	1.98	9067		1148					386	725	2297	504
1.98	TO	2.19	2218		277		1109			466	177	776	159
2.19	TO	2.39	2032		264	1056				444	163	739	150
2.39	TO	3.39	10450		1320					444	836	2640	579
3.39	TO	3.52	1313		172		686	39	54	422	105	480	98
3.522	TO	3.63	1140		143	570		39	54	373	91	399	82
3.63	TO	3.82	2006		251					87	161	502	110
3.82	TO	4.12	3168		396		1584			664	253	1109	227
4.12	TO	4.14	211	211						74	17	42	10
4.14	TO	4.37	2429		304	1214				510	194	850	174
4.37	TO	4.39	211	211						74	17	42	10
4.39	TO	4.47	775		106		422			180	62	296	60
4.47	TO	4.57	1056	1056						356	84	211	49
4.57	TO	4.68	1162		145	581				246	93	407	83
4.70	TO	5.16	4858		607	2429				1016	389	1700	348
5.16	TO	5.29	1313		172					61	105	343	75
5.29	TO	5.45	1690		211		845			356	135	591	121
5.45	TO	5.56	1002	1162						391	80	232	52
SUBTOTAL:			57701	8448	6254	7751	5702	78	108	9734	4616	16889	3584
TOTAL:			85857				78	108	9734	21505		3584	

TEMPORARY RAMPS			
STA	TO	STA	(SQ YD)
IL 106			
0.00	TO	0.01	58
1.125	TO	1.135	100
1.635	TO	1.645	50
1.875	TO	1.885	50
2.362	TO	2.38	67
2.64	TO	2.66	92
3.505	TO	3.515	50
4.394	TO	4.406	58
5.195	TO	5.205	100
5.49	TO	5.51	71
5.51	TO	5.53	63
TOTAL:			759



NOT TO SCALE

FILE NAME =	USER NAME = BurnsideEM	DESIGNED -	REVISED -
p:\11\084EBIDINTEG\illinois.gov\PIDOT\Documents\DOT Offices\District 8\Projects\0875\DRAWING\GADsheets\d876h19-sht-plan.dwg		CHECKED -	REVISED -
		DATE -	REVISED -

**STATE OF ILLINOIS
DEPARTMENT OF TRANSPORTATION**

LOCATION MAP

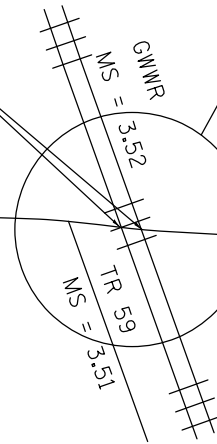
SCALE: SHEET NO. OF SHEETS STA. TO STA.

F.A.P. RTE.	SECTION	COUNTY	TOTAL SHEETS	SHEET NO.
566	2RS-3, 5ORS-2	GREENE	8	7
CONTRACT NO. 76H19				
FED. ROAD DIST. NO.		ILLINOIS FED. AID PROJECT		



MATCHLINE MS 2.75

RAILROAD OMISSION
MS 3.52 TO MS 3.522



SEE HIGHWAY STANDARD 780001 FOR
PAVEMENT MARKING AT RAILROAD
CROSSING - RAILROAD "X" 20 FT.

FAP 566 (IL 106)

ABANDONED WELL MS 3.6
TO BE SEALED

2370 N
MS = 4.40

SN 031-0035

FAP 566

BRIDGE OMISSION MS 4.68 TO MS 4.70

1150 N
MS = 5.20

WYE MS = 5.52

SN 031-2444

N MAIN EXT
MS = 5.50

FAP 310 (US 67)

US 67 MS = 5.57

END PROJECT MS = 5.56

NOT TO SCALE

FILE NAME =	USER NAME = BurnsideEM	DESIGNED -	REVISED -
pw:\IL\084EBID\INTEG.illinois.gov\PWIDOT\Documents\IDOT Offices\District 8\Projects\0875\DRAWING\GADsheets\d876h19-sht-pln.dwg		CHECKED -	REVISED -
		DATE -	REVISED -

**STATE OF ILLINOIS
DEPARTMENT OF TRANSPORTATION**

LOCATION MAP

SCALE: SHEET NO. OF SHEETS STA. TO STA.

F.A.P. RTE.	SECTION	COUNTY	TOTAL SHEETS	SHEET NO.
566	2RS-3, 5ORS-2	GREENE	8	8
CONTRACT NO. 76H19				
FED. ROAD DIST. NO. ILLINOIS FED. AID PROJECT				