

06-10-2016 LETTING ITEM 132

STATE OF ILLINOIS  
DEPARTMENT OF TRANSPORTATION  
DIVISION OF HIGHWAYS

**PROPOSED  
HIGHWAY PLANS**

FAP ROUTE 785 (IL-140)  
SECTION (136,137,138,139)RS-4

BITUMINOUS SURFACE TREATMENT CLASS A-2  
FROM OLIVE ROAD (EAST OF ALHAMBRA) TO NORTH JUNCTION IL 127  
MADISON AND BOND COUNTIES

F.A.P. RTE.	SECTION	COUNTY	TOTAL SHEETS	SHEET NO.
785	(136,137,138,139)RS-4	ILLINOIS	7	1

CONTRACT NO. 76J36  
MADISON & BOND

FOR INDEX OF SHEETS, SEE SHEET NO. 2

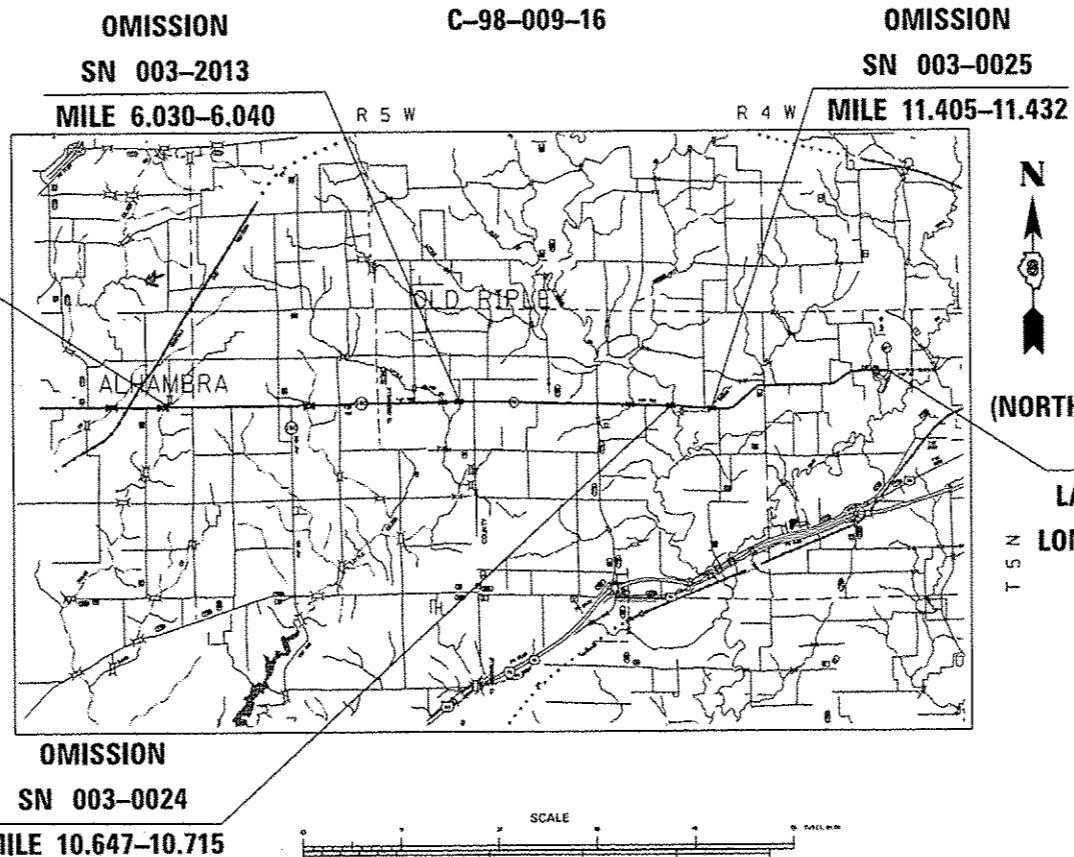
TRAFFIC DATA

OLIVE ROAD TO IL 160  
2015 ADT=3550 (ACTUAL)  
2016 ADT=3600 (ESTIMATED)  
2036 ADT=4400 (ESTIMATED)  
SU=6.1%  
MU=4.8%

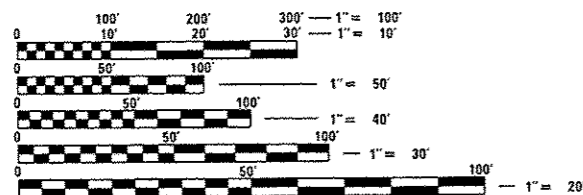
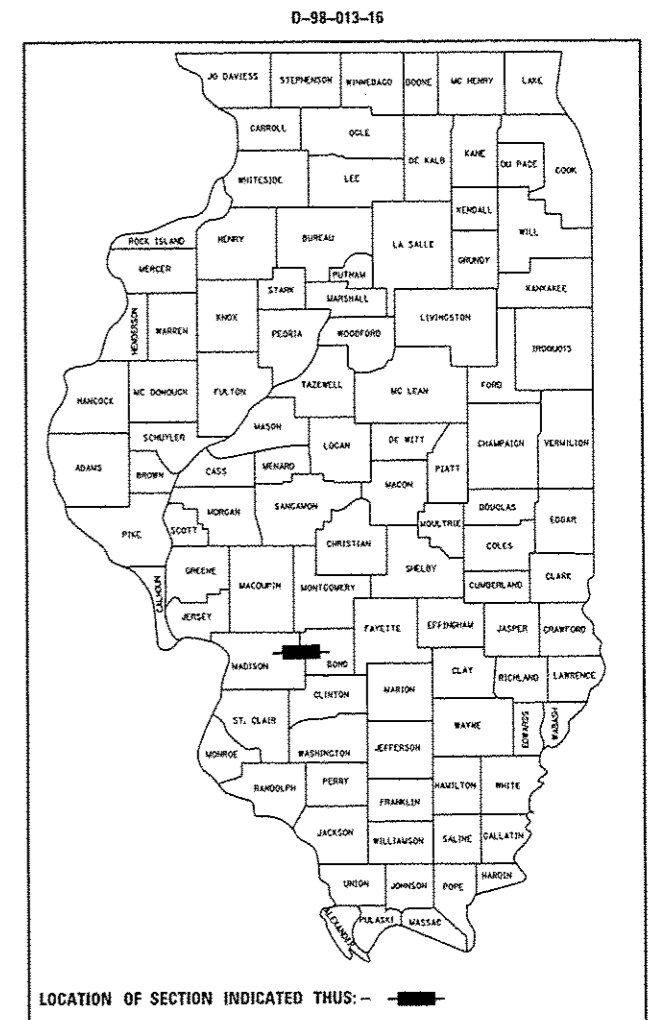
IL 160 TO MAIN ST  
2015 ADT=1950 (ACTUAL)  
2016 ADT=2000 (ESTIMATED)  
2036 ADT=2400 (ESTIMATED)  
SU=11.0%  
MU=5.1%

MAIN ST TO IL 127  
2015 ADT=2650 (ACTUAL)  
2016 ADT=2700 (ESTIMATED)  
2036 ADT=3250 (ESTIMATED)  
SU=4.5%  
MU=3.0%

BEGIN PROJECT  
(INTERSECTION OF IL  
140 AND OLIVE RD)  
MILE 0.00  
LATITUDE: 38.888219  
LONGITUDE: -89.717347



END PROJECT  
(NORTH JUNCTION OF IL 127)  
MILE 15.48  
LATITUDE: 38.897706  
LONGITUDE: -89.437494



FULL SIZE PLANS HAVE BEEN PREPARED USING STANDARD ENGINEERING SCALES. REDUCED SIZED PLANS WILL NOT CONFORM TO STANDARD SCALES. IN MAKING MEASUREMENTS ON REDUCED PLANS, THE ABOVE SCALES MAY BE USED.

J.U.L.I.E.  
JOINT UTILITY LOCATION INFORMATION FOR EXCAVATION  
1-800-892-0123  
OR 811

PROJECT ENGINEER - TIM PADGETT (618) 346-3180  
PROJECT MANAGER - MESERET SIMA (618) 346-3141

CONTRACT NO. 76J36

GROSS LENGTH = 81734.4 FT = 15.480 MILE  
NET LENGTH = 81195.80 FT = 15.378 MILE

STATE OF ILLINOIS  
DEPARTMENT OF TRANSPORTATION  
DIVISION OF HIGHWAYS  
SUBMITTED *March 24 2014*  
*Jeffrey E. Vance*  
REGION 5 ENGINEER  
*May 6 2016*  
*Mawneen M. Addis, P.E.*  
ENGINEER OF DESIGN AND ENVIRONMENT  
*May 6 2016*  
*Omer Osman, P.E.*  
DIRECTOR OF HIGHWAYS, CHIEF ENGINEER

PRINTED BY THE AUTHORITY  
OF THE STATE OF ILLINOIS

**INDEX OF SHEETS**

1. COVER SHEET
2. INDEX, HIGHWAY STANDARDS, GENERAL NOTES, AND COMMITMENTS
3. SUMMARY OF QUANTITIES
4. TYPICAL SECTIONS
5. SCHEDULES OF QUANTITIES
6. LOCATION MAP
7. INTERSECTION DETAILS

**HIGHWAY STANDARDS**

- 000001-06 STANDARD SYMBOLS, ABBREVIATIONS AND PATTERNS
- 001006 DECIMAL OF AN INCH AND OF A FOOT
- 701006-05 OFF-ROAD OPERATIONS, 2L, 2W, 15' TO 24" FROM PAVEMENT EDGE
- 701201-04 LANE CLOSURE, 2L, 2W DAY ONLY FOR SPEEDS ≥ 45 MPH
- 701306-03 LANE CLOSURE, 2L, 2W, SLOW MOVING OPERATIONS DAY ONLY, FOR SPEEDS ≥ 45 MPH
- 701311-03 LANE CLOSURE, 2L, 2W, MOVING OPERATIONS - DAY ONLY
- 701901-05 TRAFFIC CONTROL DEVICES
- 780001-05 TYPICAL PAVEMENT MARKINGS

**GENERAL NOTES**

1. ILLINOIS STATE LAW REQUIRES A 48-HOUR NOTICE BE GIVEN TO ALL UTILITIES WITH THE PROJECT AREA BEFORE DIGGING. FIELD MARKING OF FACILITIES MAY BE OBTAINED BY CONTACTING J.U.L.I.E. OR FOR NON-MEMBERS, THE UTILITY COMPANY DIRECTLY. AGENCIES KNOWN TO HAVE FACILITIES WITHIN THE PROJECT AREA ARE AS FOLLOWS:

UTILITY	ABOVE GROUND	BELOW GROUND
•VILLAGE OF ALHAMBRA		X
•ALHAMBRA-GRANTFORK TELEPHONE CO.	X	X
•AMEREN ILLINOIS	X	X
•AT & T ILLINOIS	X	X
•VILLAGE OF BETHALTO		X
•BOND MADISON WATER COMPANY		X
•BUCKEYE PARTNERS L.P.--WOOD RIVER PIPELINE		X
•CHARTER COMMUNICATIONS, INC.	X	X
•CONSOLIDATED COMMUNICATIONS	X	X
•EXPORER PIPELINE COMPANY		X
•VILLAGE OF GRANTFORK		X
•VILLAGE OF HAMEL		X
•LEVEL(3) COMMUNICATIONS, LLC		X
•MADISON TELEPHONE COMPANY	X	X
•MARATHON PIPE LINE LLC		X
•MEADOWBROOK PUBLIC WATER DISTRICT		X
•NORTHEAST CENTRAL COUNTY PUBLIC WATER DISTRICT		X
•MCLEOD TELECOMMUNICATIONS SERVICES, LLC		X
•SOUTHWESTERN ELECTRIC COOPERATIVE, INC.	X	X
•THREE COUNTY PUBLIC WATER DISTRICT		X

MEMBERS OF J.U.L.I.E. CALL TOLL FREE (800)-892-0123 OR 811 ARE INDICATED BY \*. NON-J.U.L.I.E. MEMBERS MUST BE NOTIFIED INDIVIDUALLY.

2. SECTION CORNER INFORMATION WILL BE PROVIDED AT THE PRE CONSTRUCTION MEETING.

3. THE DEPARTMENT STRONGLY ENCOURAGES THE PRIME CONTRACTOR AND THEIR APPROVED SUB-CONTRACTORS TO HIRE MINORITY, WOMEN AND DISADVANTAGED INDIVIDUALS FROM ITS FEDERALLY FUNDED HIGHWAY CONSTRUCTION CAREERS TRAINING PROGRAM (HCCTP) TO HELP MEET WORKFORCE AND TRAINEE GOALS. THIS PROGRAM IS TRAINING MINORITIES, WOMEN AND DISADVANTAGED INDIVIDUALS IN HIGHWAY CONSTRUCTION-RELATED SKILLS, E.G., MATH FOR THE TRADES, JOB READINESS, TECHNICAL SKILLS COURSEWORK (CARPENTRY, CONCRETE FLATWORK, BLUEPRINT READING, SITE PLANS, SITE WORK, TOOLS USE, ETC.) AND OSHA 10 HOUR CERTIFICATION, TO PREPARE THEM FOR A CAREER IN THE HIGHWAY CONSTRUCTION TRADES. GRADUATES ARE WELL-TRAINED AND READY TO BECOME PRODUCTIVE ENTRY-LEVEL CONSTRUCTION WORKERS. CONTACT THE DISTRICT 8 EEO OFFICE AT 618-346-3360 AND/OR THE HCCTP COORDINATOR AT 618-874-6528 TO LEARN MORE ABOUT THE PROGRAM AND FOR ASSISTANCE IN MEETING WORKFORCE AND TRAINEE GOALS.
4. THE CONTRACTOR AND THE ENGINEER SHALL BE AWARE THAT NO SURVEY WAS PERFORMED FOR THIS PROJECT. THE STATIONING IN THE PLANS IS PROVIDED AS A POINT OF REFERENCE AND FOR DISTANCE PURPOSES ONLY. ROADWAY DIMENSIONS WERE OBTAINED FROM MICROFILM AND OTHER SOURCES OF DATA. ALL SHALL BE ASSUMED TO BE APPROXIMATE. THE CONTRACTOR SHALL VERIFY DIMENSIONS AND CONDITIONS IN THE FIELD PRIOR TO CONSTRUCTION AND ORDERING OF MATERIALS. FOR ANY VARIATIONS BETWEEN ACTUAL DIMENSIONS AND THOSE SHOWN IN THE PLANS, THE BITUMINOUS SURFACE TREATMENT SHALL BE PLACED AT LIMITS DETERMINED AT THE DISCRETION OF THE RESIDENT ENGINEER.
5. THE CONTRACTOR SHALL POST THE ROADWAY WITH "LOOSE GRAVEL" AND "SPEED LIMIT 35" SIGNS IN ACCORDANCE WITH APPLICABLE ARTICLES OF DIVISION 700 OF THE STANDARD SPECIFICATIONS. THESE SIGNS SHALL BE PLACED AT THE START OF WORK, NEAR INTERSECTING ROADWAYS AND THEN AT AN AVERAGE SPACING OF 0.5 MILES (0.8 KM). THE SIGNS MAY BE REMOVED AS SOON AS THE SWEEPING OPERATION HAS BEEN COMPLETED.
6. NO OVERNIGHT LANE CLOSURES WILL BE PERMITTED.
7. SIDEROADS AND ENTRANCES SHALL BE OPEN TO TRAFFIC AT ALL TIMES.
8. 'ROAD CONSTRUCTION AHEAD' SIGNS SHALL BE PLACED AT THE BEGINNING OF THE PROJECT PLUS THE INTERSECTING SIDEROADS, AND WILL BE CONSIDERED INCLUDED IN THE TRAFFIC CONTROL PAY ITEMS. ALL CONSTRUCTION SIGNS SHALL BE 48" X 48" FLUORESCENT ORANGE.
9. ALL TRAFFIC CONTROL DEVICES AS HEREIN SPECIFIED AND ANY ADDITIONAL TRAFFIC CONTROL DEVICES AS DEEMED NECESSARY BY THE RESIDENT ENGINEER SHALL BE INCLUDED IN THE CONTRACT TRAFFIC CONTROL AND PROTECTION PAY ITEMS.
10. THE PROPOSED PAVEMENT MARKING SHALL MATCH THE LOCATIONS OF THE EXISTING PAVEMENT MARKING, OR AS DIRECTED BY THE ENGINEER.
11. THE CONTRACTOR SHALL NOTIFY THE GREENVILLE IDOT MAINTENANCE YARD TECHNICIAN JASON ROECKENHAUS AT (618) 593-4057 TWO WEEKS PRIOR TO THE APPLICATION OF THE BITUMINOUS SURFACE TREATMENT IN ORDER FOR IDOT MAINTENANCE CREWS TO MAKE ANY NEEDED REPAIRS TO THE PAVEMENT AND SHOULDERS.
12. ALL AREAS DISTURBED FOR ANY REASON SHALL BE PERMANENTLY SEEDDED AS DIRECTED BY THE ENGINEER. ALL AREAS DISTURBED BY THE CONTRACTOR OUTSIDE THE PROPOSED CONSTRUCTION LIMITS SHALL BE SEEDDED AT THE CONTRACTOR'S EXPENSE.
13. SHORT TERM PAVEMENT MARKING FOR THIS LOW VOLUME ROAD CONSISTS OF 2 APPLICATIONS OF THE 4 FOOT LONG BY 4" WIDE YELLOW CENTERLINE SKIP DASH AT 40' CENTER TO CENTER. PERMANENT "NO PASSING ZONE" WARNING SIGNS OR THE "DO NOT PASS" AND "PASS WITH CARE" REGULATORY SIGNS MAY BE USED TO DENOTE PASSING/ NO PASSING ZONES IN ACCORDANCE WITH ART.703.05. COST FOR SIGNS SHALL BE INCLUDED WITH SHORT TERM PAVEMENT PARKING
14. AT LOCATIONS WHERE PERMANENT PAVEMENT MARKINGS ARE PROPOSED, THE CONTRACTOR SHALL SWEEP THE ENTIRE ROADWAY A MINIMUM OF TWO WEEKS, BUT NOT TO EXCEED THREE WEEKS, AFTER APPLICATION OF SEAL COAT AGGREGATE TO ALLOW PLACEMENT OF THE PAINT PAVEMENT MARKINGS. OF THIS TIME FRAME, THERE MUST BE SEVEN CONSECUTIVE DAYS OF DRY WEATHER BEFORE THE FINAL PAVEMENT MARKINGS CAN BE APPLIED. THE COST FOR THIS WORK SHALL BE INCLUDED IN THE PRICE OF THE SURFACE TREATMENT AND NO ADDITIONAL COMPENSATION WILL BE ALLOWED.

**COMMITMENTS**

NONE

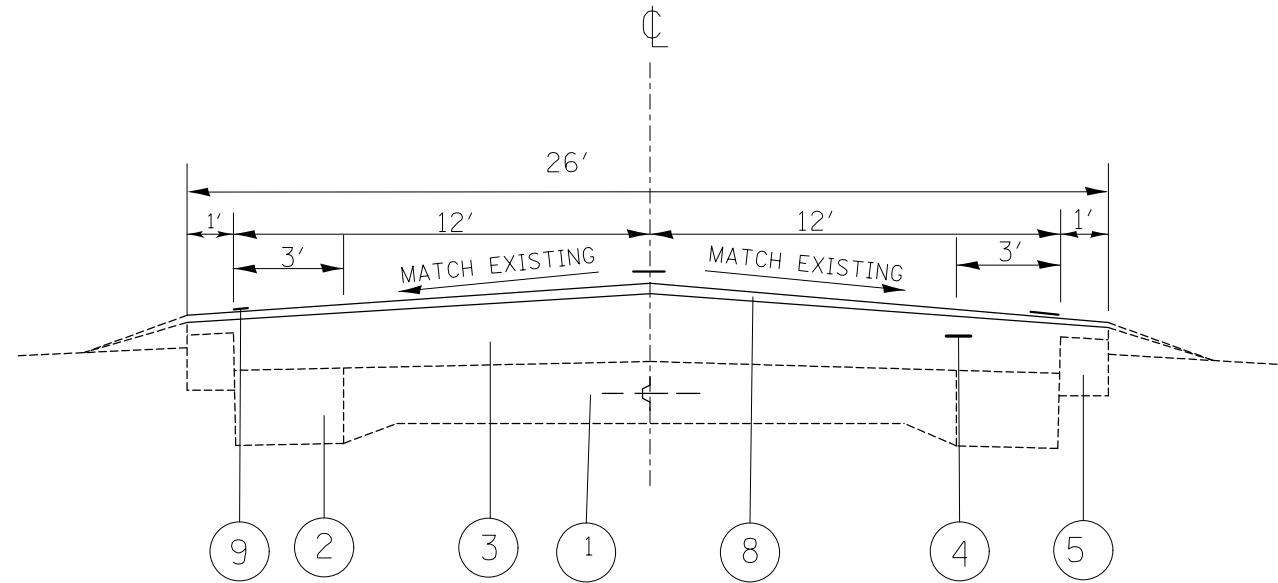
• MADISON & BOND

FILE NAME = USER NAME = esimom DESIGNED - REVISIONS - PLOT SCALE = 1/8" = 1' PLOT DATE = 3/25/2016				DESIGNED - REVISIONS - CHECKED - DATE -				<b>STATE OF ILLINOIS DEPARTMENT OF TRANSPORTATION</b>				<b>INDEX, HIGHWAY STANDARDS, GENERAL NOTES, AND COMMITMENTS</b>				F.A.P. RTE. 785		SECTION (136,137,138,139)RS-4		COUNTY •		TOTAL SHEETS 7		SHEET NO. 2	
SCALE: SHEET 1 OF 1 SHEETS STA. TO STA.										ILLINOIS FED. AID PROJECT															

CONTRACT NO.76J36

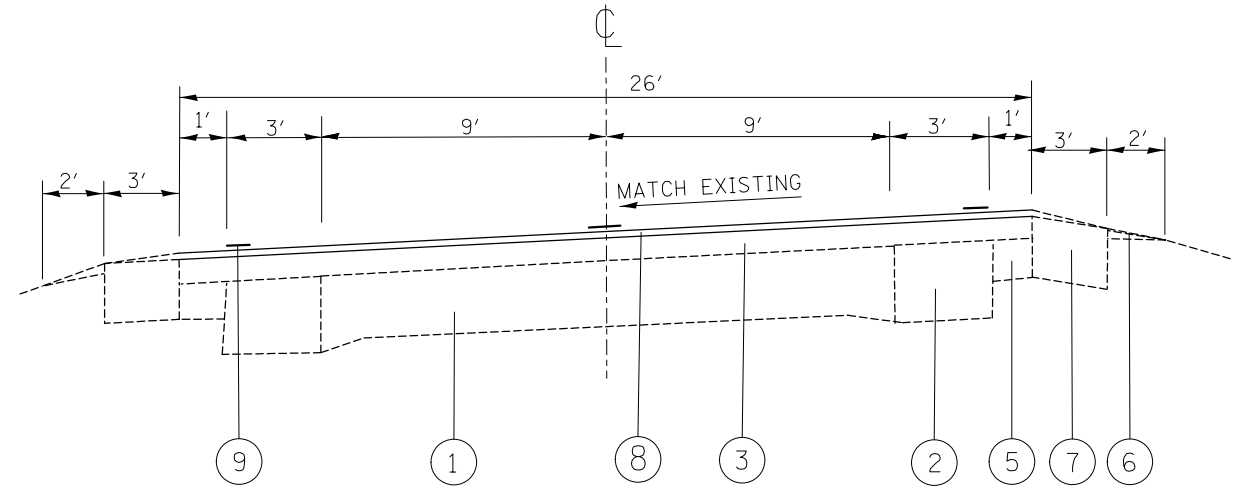
CODE NO.	ITEM	UNIT	TOTAL QUANTITY	CONSTRUCTION CODE	
				MADISON ROADWAY	BOND ROADWAY
				0005 RURAL	0005 RURAL
40300400	BITUMINOUS MATERIALS (COVER AND SEAL COATS)	TON	685	193	492
40300500	COVER COAT AGGREGATE	TON	2347	661	1686
40300600	SEAL COAT AGGREGATE	TON	2347	661	1686
67100100	MOBILIZATION	LSUM	1	0.3	0.7
70100450	TRAFFIC CONTROL AND PROTECTION, STANDARD 701201	LSUM	1	0.3	0.7
70100460	TRAFFIC CONTROL AND PROTECTION, STANDARD 701306	LSUM	1	0.3	0.7
70300100	SHORT TERM PAVEMENT MARKING	FOOT	29269	8051	21218
70300150	SHORT TERM PAVEMENT MARKING REMOVAL	SQ FT	4874	1341	3533
70300220	TEMPORARY PAVEMENT MARKING - LINE 4"	FOOT	428084	18422	409662
X 78001110	PAINT PAVEMENT MARKING - LINE 4"	FOOT	214042	74364	139678
	<i>TEMPORARY</i>				
X 7810400	RAISED REFLECTIVE PAVEMENT MARKER	EACH	8049	2214	5835
78100200	TEMPORARY RAISED REFLECTIVE PAVEMENT MARKER	EACH	1020	282	738
78300100	PAVEMENT MARKING REMOVAL	SQ FT	71348	24788	46560
78300200	RAISED REFLECTIVE PAVEMENT MARKER REMOVAL	EACH	1006	277	729

CODE NO.	ITEM	UNIT	TOTAL QUANTITY	CONSTRUCTION CODE	
				MADISON ROADWAY	BOND ROADWAY
				0005 RURAL	0005 RURAL
<del>07000100</del>	<del>CONCRETE FOUNDATION, TYPE A</del>	<del>FOOT</del>	<del>1006</del>	<del>277</del>	<del>729</del>
<i>Ø</i> Z0076604	<i>TRAINEES - TRAINING PROGRAM GRADUATE</i>	<i>HOUR</i>	<i>500</i>	<i>250</i>	<i>250</i>
Z0070100	SURVEY MONUMENT COVER ASSEMBLY	EACH	12	2	10



TYPICAL SECTION

MILE 0.00 TO 6.69  
MILE 8.12 TO 15.48



TYPICAL SECTION

MILE 6.69 TO 8.12

LEGEND

- ① EXISTING P.C.C. PAVEMENT 9''-6''-9''
- ② EXISTING P.C.C WIDENING 9''
- ③ EXISTING BITUMINOUS SURFACING (4 1/2''±)
- ④ EXISTING STRIP REFLECTIVE CRACK CONTROL TREATMENT
- ⑤ EXISTING BITUMINOUS SHOULDERS, 6''
- ⑥ EXISTING AGGREGATE SHOULDERS
- ⑦ EXISTING BITUMINOUS SHOULDERS, 8''
- ⑧ PROPOSED BITUMINOUS SURFACE TREATMENT CLASS A-2
- ⑨ PROPOSED PAINT PAVEMENT MARKING -LINE 4''

• MADISON & BOND

FILE NAME =	USER NAME = sjmm	DESIGNED -	REVISED -
pw:\IL084EBIDINTEG.illinois.gov\PWIDOT\Documents\DOT Offices\District 8\Projects\0876\DRAWING\DATA\EA0\Sheets\0876J36-sht-plan.dwg		DRAWN -	REVISED -
Default	PLOT SCALE = 100.0000' / 1in.	CHECKED -	REVISED -
	PLOT DATE = 3/25/2016	DATE -	REVISED -

STATE OF ILLINOIS  
DEPARTMENT OF TRANSPORTATION

TYPICAL SECTIONS

SCALE: SHEET 1 OF 1 SHEETS STA. TO STA.

F.A.P. RTE.	SECTION	COUNTY	TOTAL SHEETS	SHEET NO.
785	(136,137,138,139)RS-4	*	7	4
CONTRACT NO.76J36			ILLINOIS FED. AID PROJECT	

PAVEMENT MARKING SCHEDULE *								
LOCATION			LENGTH	PAINT				
				4" SOLID (WHITE)		4" SOLID (YELLOW)		4" SKIP-DASH (YELLOW)
STATION	TO	STATION	FOOT	FOOT		FOOT		FOOT
				EB	WB	EB	WB	CENTER
0.000	TO	0.510	2692.8	2693				
0.000	TO	9.066	47868.48					11970
0.008	TO	2.349	12360.48		12360			
0.520	TO	2.349	9657.12	9657				
0.996	TO	1.151	818.4			818		
1.198	TO	1.380	960.96				961	
2.360	TO	2.593	1230.24	1230				
2.360	TO	3.619	6647.52		6648			
2.623	TO	3.619	5258.88	5259				
3.629	TO	6.422	14747.04	14747				
3.629	TO	5.148	8020.32		8020			
5.158	TO	6.422	6673.92		6674			
6.030	TO	6.040	52.80					
6.433	TO	7.791	7170.24	7170				
6.433	TO	7.977	8152.32		8152			
7.801	TO	9.066	6679.20	6679				
7.986	TO	8.040	285.12		285			
8.049	TO	9.066	5369.76		5370			
8.074	TO	8.211	723.36			723		
8.299	TO	8.453	813.12				813	
8.800	TO	9.077	1462.56			1463		
9.066	TO	9.262	1034.88				1035	
9.077	TO	10.082	5306.40	5306				
9.077	TO	10.363	6790.08		6790			
9.077	TO	9.171	496.32					124
9.171	TO	9.530	1895.52			1896		
9.262	TO	9.389	670.56					168
9.384	TO	9.725	1800.48				1800	
9.530	TO	10.043	2708.64					677
9.826	TO	10.139	1652.64			1653		
10.043	TO	11.354	6922.08		6922			
10.094	TO	12.802	14298.24	14298				
10.139	TO	11.911	9356.16					2339
11.366	TO	12.802	7582.08		7582			
11.694	TO	12.002	1626.24			1626		
11.911	TO	12.209	1573.44				1573	
12.002	TO	12.672	3537.60					884
12.461	TO	12.701	1267.20			1267		
12.672	TO	12.906	1235.52				1236	
12.701	TO	14.280	8337.12					2084
12.814	TO	14.037	6457.44	6457				
12.814	TO	13.005	1008.48		1008			
13.015	TO	14.233	6431.04		6431			
14.052	TO	14.777	3828.00	3828				
14.068	TO	14.336	1415.04			1415		
14.241	TO	14.734	2603.04		2603			
14.280	TO	14.536	1351.68				1352	
14.336	TO	14.462	665.28					166
14.462	TO	15.820	7170.24			7170		
14.536	TO	14.716	950.40			950		238
14.716	TO	15.482	4044.48				4044	
14.751	TO	15.482	3859.68		3860			
14.787	TO	15.342	2930.40	2930				
15.360	TO	15.480	633.60	634				
SUBTOTAL				80890	82706	18982	12815	18651
TOTAL				214042				

BITUMINOUS SURFACE TREATMENT CLASS A-2 SCHEDULE							
LOCATION			LENGTH	WIDTH	BITUMINOUS MATERIALS (COVER AND SEAL COAT)	COVER COAT AGGREGATE	SEAL COAT AGGREGATE
STATION	TO	STATION	FOOT	FOOT	(TON)	(TON)	(TON)
0.000	TO	4.334	22883.5	26	193.0	661.1	661.1
4.334	TO	6.030	8954.9	26	75.5	258.7	258.7
6.030	TO	10.647	24377.8	26	205.6	704.2	704.2
10.674	TO	10.715	216.5	BRIDGE OMISSION			
10.715	TO	11.405	3643.2	26	30.7	105.2	105.2
11.405	TO	11.432	142.6	BRIDGE OMISSION			
11.432	TO	15.480	21373.4	26	180.3	617.5	617.5
TOTAL					685	2347	2347

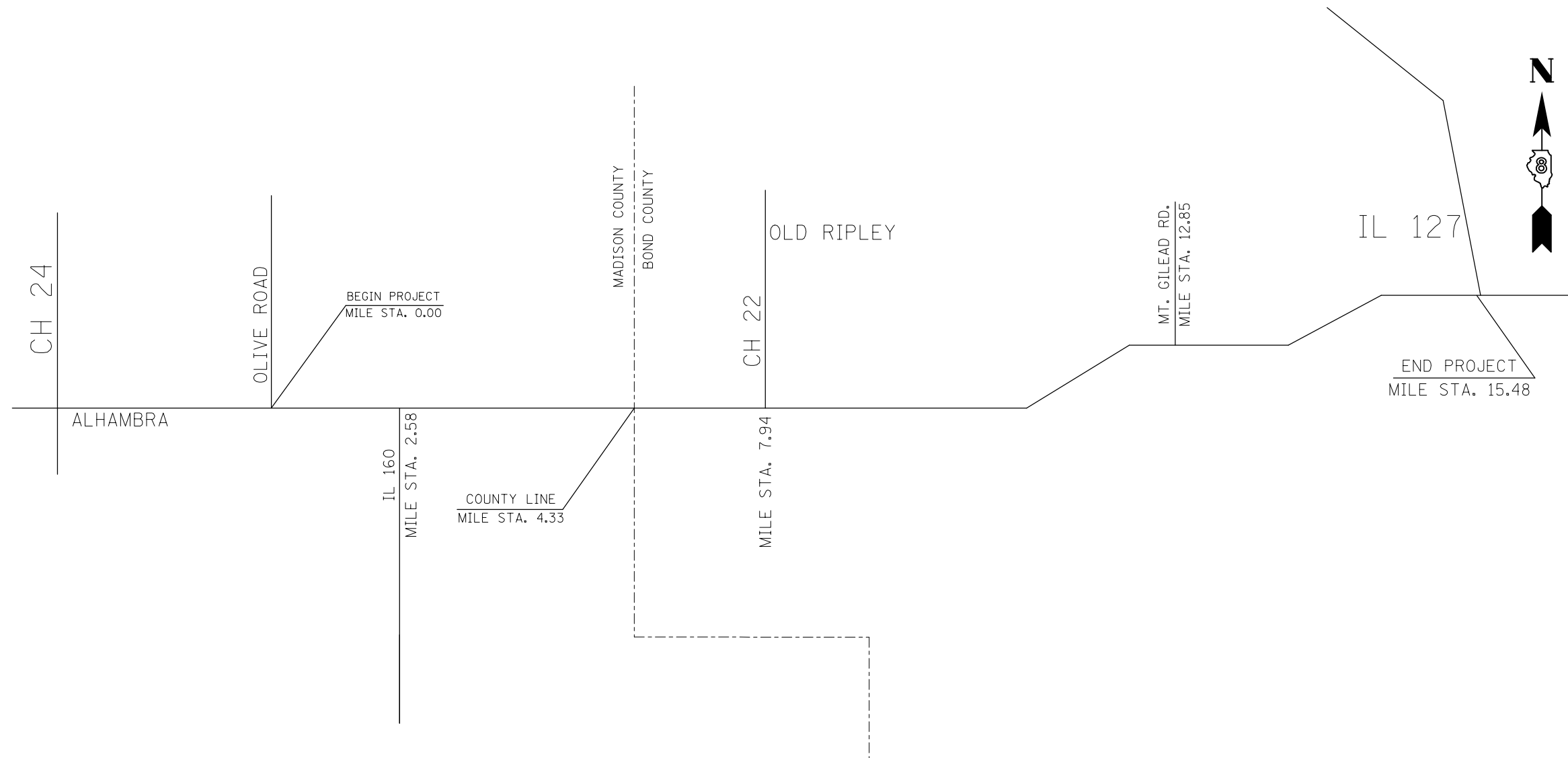
\* TEMPORARY PAVEMENT MARKING SHALL MATCH THIS SCHEDULE, EXCEPT THAT TWO APPLICATION OF TEMPORARY PAVEMENT MARKING ASSUMED.

• MADISON & BOND

FILE NAME =	USER NAME = sjmm	DESIGNED -	REVISED -	<b>STATE OF ILLINOIS DEPARTMENT OF TRANSPORTATION</b>	<b>SCHEDULE OF QUANTITIES</b>			F.A.P. RTE.	SECTION	COUNTY	TOTAL SHEETS	SHEET NO.
p:\11\084EBIDINTEG\Illinois.gov\PIDOT\Documents\DOT Offices\District 8\Projects\0876\DRAWING\DATA\EA0\Sheets\0876J36-sht-plan.dwg	PLotted SCALE = 100.0000' / 1".	CHECKED -	REVISED -					785	(136,137,138,139)RS-4	*	7	5
Default	PLotted DATE = 3/25/2016	DATE -	REVISED -		SCALE: SHEET 1 OF 1 SHEETS STA. TO STA.			CONTRACT NO.76J36				
ILLINOIS FED. AID PROJECT												

# LOCATION MAP

(NOT TO SCALE)



• MADISON & BOND

FILE NAME =	USER NAME = sjmm	DESIGNED -	REVISED -
pw:\IL084EBIDINTEG.illinois.gov\PIDOT\Documents\DOT Offices\District 8\Projects\0876\DRAWING\DATA\EA\Sheets\D876J36-sht-plan.dwg		DRAWN -	REVISED -
Default	PLOT SCALE = 100.0000' / 1in.	CHECKED -	REVISED -
	PLOT DATE = 3/25/2016	DATE -	REVISED -

**STATE OF ILLINOIS  
DEPARTMENT OF TRANSPORTATION**

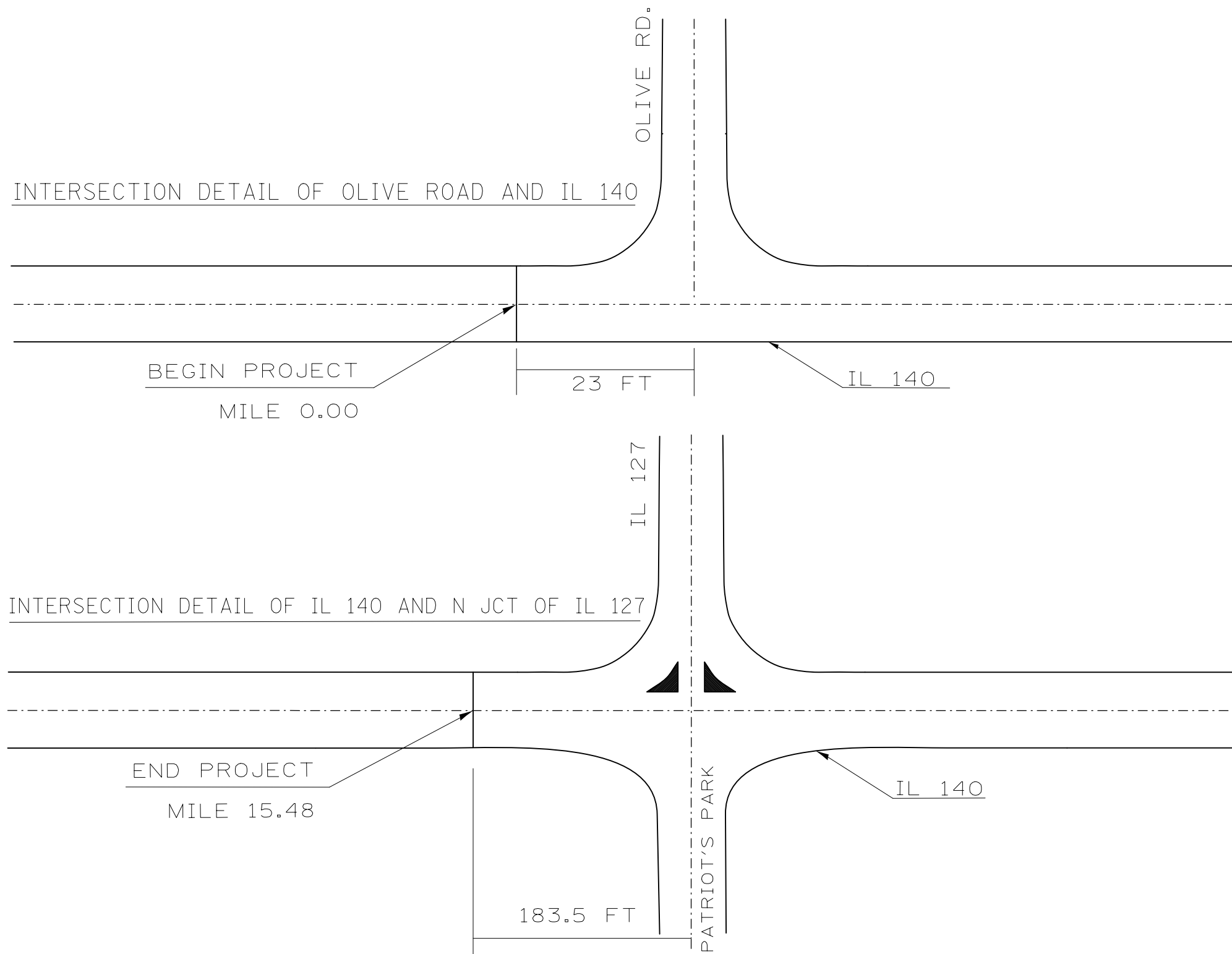
**LOCATION MAP**

SCALE: SHEET 1 OF 1 SHEETS STA. TO STA.

F.A.P. RTE.	SECTION	COUNTY	TOTAL SHEETS	SHEET NO.
785	(136,137,138,139)RS-4	•	7	6
CONTRACT NO.76J36				
ILLINOIS FED. AID PROJECT				

# INTERSECTION DETAILS

(NOT TO SCALE)



FILE NAME =	USER NAME = sjmm	DESIGNED -	REVISED -	<b>STATE OF ILLINOIS DEPARTMENT OF TRANSPORTATION</b>	<b>INTERSECTION DETAILS</b>			F.A.P. RTE.	SECTION	COUNTY	TOTAL SHEETS	SHEET NO.					
pw:\IL084EBIDINTEG\illinois.gov\PIDOT\Documents\IDOT Offices\District 8\Projects\0876\DRAWING\DATA\EA\Sheets\D876J36-sht-plan.dwg								SCALE:			SHEET 1	OF 1	SHEETS	STA.	TO STA.	785	(136,137,138,139)RS-4
Default					PLOT SCALE = 100.0000' / 1in.			CHECKED -			REVISED -			CONTRACT NO. 76J36			
PLOT DATE = 3/25/2016					DATE -			REVISED -			ILLINOIS FED. AID PROJECT						

• MADISON & BOND