

STATE OF ILLINOIS
DEPARTMENT OF TRANSPORTATION

F.A.P. RTE.	SECTION	COUNTY	TOTAL SHEETS	SHEET NO.
29	2020-048-RS&SW	COOK	24	1
ILLINOIS		CONTRACT NO. 62L20		

FOR INDEX OF SHEETS, SEE SHEET NO. 2

THIS PROJECT IS LOCATED IN THE CITY OF CHICAGO

PROPOSED HIGHWAY PLANS

ROUTE: F.A.P. 29 (AVENUE L)
US 12/20 (95TH STREET) TO INDIANAPOLIS AVE.
SECTION: 2020-048-RS&SW
STANDARD OVERLAY AND ADA IMPROVEMENTS
COOK COUNTY

D-91-431-20



TRAFFIC DATA:

SPEED LIMIT = 30 MPH

3,350 ADT (2018)

C-91-238-20



FULL SIZE PLANS HAVE BEEN PREPARED USING STANDARD ENGINEERING SCALES. REDUCED SIZED PLANS WILL NOT CONFORM TO STANDARD SCALES. IN MAKING MEASUREMENTS ON REDUCED PLANS, THE ABOVE SCALES MAY BE USED.

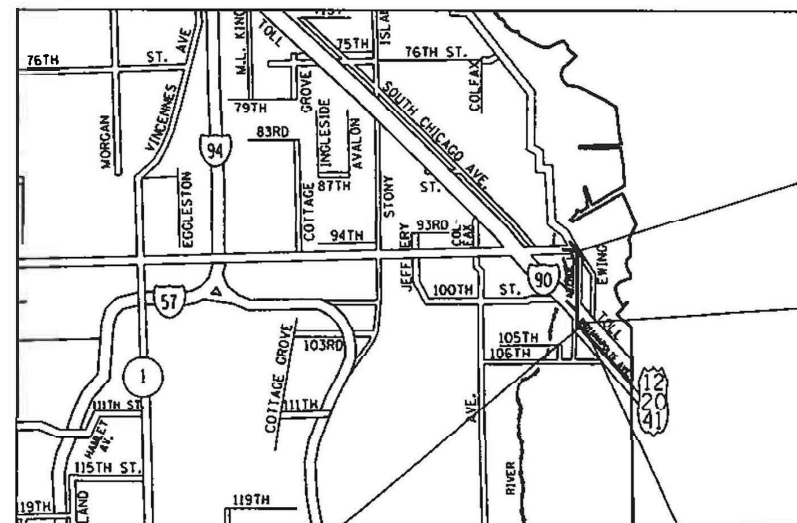
C.U.A.N.
CHICAGO UTILITY ALERT NETWORK: (312)-744-7000

PROJECT ENGINEER: DANIEL WILGREEN (847) 705-4240
PROJECT MANAGER: FAWAD AQUEEL (847) 705-4247

CONTRACT NO. 62L20

R. 15 E.

T. 37 N.



PROJECT ENDS
STA. 37+91

PROJECT ENDS
STA. 18+54

PROJECT BEGINS
STA. 3+90

PROJECT BEGINS
STA. 12+12

HYDE PARK TOWNSHIP

GROSS LENGTH = 4,485 FT = 0.85 MILES
NET LENGTH = 3,833 FT = 0.73 MILES



LOCATION MAP (NOT TO SCALE)

OMISSIONS:

STA. 6+55 TO STA. 13+07

STATE OF ILLINOIS
DEPARTMENT OF TRANSPORTATION

SUBMITTED FEBRUARY 3, 2021

[Signature]
REGIONAL ENGINEER

May 7, 2021

[Signature]
ENGINEER OF DESIGN AND ENVIRONMENT

May 7, 2021

[Signature]
DIRECTOR OF HIGHWAYS PROJECT IMPLEMENTATION

PRINTED BY THE AUTHORITY OF THE STATE OF ILLINOIS

SUMMARY OF QUANTITIES			TOTAL QUANTITIES URBAN	CONSTRUCTION TYPE CODE				
CODE NO	ITEM	UNIT		100% STATE 0005				
20200100	EARTH EXCAVATION	CU YD	5	5				
21101600	TOPSOIL FURNISH AND PLACE, VARIABLE DEPTH	SO YD	10	10				
25200110	SODDING, SALT TOLERANT	SO YD	10	10				
40600290	BITUMINOUS MATERIALS (TACK COAT)	POUND	13331	13331				
40600400	MIXTURE FOR CRACKS, JOINTS, AND FLANGEWAYS	TON	35	35				
40600982	HOT-MIX ASPHALT SURFACE REMOVAL - BUTT JOINT	SO YD	361	361				
40601005	HOT-MIX ASPHALT REPLACEMENT OVER PATCHES	TON	96	96				
40603200	POLYMERIZED HOT-MIX ASPHALT BINDER COURSE, IL-4.75, N50	TON	541	541				
40604062	HOT-MIX ASPHALT SURFACE COURSE, IL-9.5, MIX "D", N70	TON	2146	2146				
42001300	PROTECTIVE COAT	SO YD	1334	1334				
42400200	PORTLAND CEMENT CONCRETE SIDEWALK 5 INCH	SO FT	641	641				
42400410	PORTLAND CEMENT CONCRETE SIDEWALK 8 INCH	SO FT	301	301				

SUMMARY OF QUANTITIES			TOTAL QUANTITIES URBAN	CONSTRUCTION TYPE CODE				
CODE NO	ITEM	UNIT		100% STATE 0005				
44000155	HOT-MIX ASPHALT SURFACE REMOVAL, 1 1/2"	SO YD	2583	2583				
44000157	HOT-MIX ASPHALT SURFACE REMOVAL, 2"	SO YD	7403	7403				
44000158	HOT-MIX ASPHALT SURFACE REMOVAL, 2 1/4"	SO YD	13091	13091				
44000600	SIDEWALK REMOVAL	SO FT	942	942				
44002209	HOT-MIX ASPHALT REMOVAL OVER PATCHES, 2 1/4"	SO YD	760	760				
44201741	CLASS D PATCHES, TYPE II, 8 INCH	SO YD	510	510				
44201745	CLASS D PATCHES, TYPE III, 8 INCH	SO YD	150	150				
44201747	CLASS D PATCHES, TYPE IV, 8 INCH	SO YD	100	100				
60250200	CATCH BASINS TO BE ADJUSTED	EACH	4	4				
60252800	CATCH BASINS TO BE RECONSTRUCTED	EACH	1	1				
60265700	VALVE VAULTS TO BE ADJUSTED	EACH	9	9				
60266600	VALVE BOXES TO BE ADJUSTED	EACH	8	8				
60300105	FRAMES AND GRATES TO BE ADJUSTED	EACH	5	5				
60300305	FRAMES AND LIDS TO BE ADJUSTED	EACH	4	4				

REV-SEP

* = SPECIALTY ITEMS

SUMMARY OF QUANTITIES			TOTAL QUANTITIES URBAN	CONSTRUCTION TYPE CODE				
CODE NO	ITEM	UNIT		100% STATE 0005				
60406000	FRAMES AND LIDS, TYPE 1, OPEN LID	EACH	3	3				
60406100	FRAMES AND LIDS, TYPE 1, CLOSED LID	EACH	6	6				
* 66900200	NON-SPECIAL WASTE DISPOSAL	CU YD	5	5				
* 66900530	SOIL DISPOSAL ANALYSIS	EACH	2	2				
* 66901001	REGULATED SUBSTANCES PRE-CONSTRUCTION PLAN	LSUM	1	1				
* 66901003	REGULATED SUBSTANCES FINAL CONSTRUCTION REPORT	LSUM	1	1				
* 66901006	REGULATED SUBSTANCES MONITORING	CAL DA	2	2				
67000400	ENGINEER'S FIELD OFFICE, TYPE A	CAL MO	6	6				
67100100	MOBILIZATION	L SUM	1	1				
70102620	TRAFFIC CONTROL AND PROTECTION, STANDARD 701501	L SUM	1	1				
70102622	TRAFFIC CONTROL AND PROTECTION, STANDARD 701502	L SUM	1	1				
70102632	TRAFFIC CONTROL AND PROTECTION, STANDARD 701602	L SUM	1	1				
70102635	TRAFFIC CONTROL AND PROTECTION, STANDARD 701701	L SUM	1	1				

SUMMARY OF QUANTITIES			TOTAL QUANTITIES URBAN	CONSTRUCTION TYPE CODE				
CODE NO	ITEM	UNIT		100% STATE 0005				
70102640	TRAFFIC CONTROL AND PROTECTION, STANDARD 701801	L SUM	1	1				
70300100	SHORT TERM PAVEMENT MARKING	FOOT	6103	6103				
70300150	SHORT TERM PAVEMENT MARKING REMOVAL	SO FT	2035	2035				
70300210	TEMPORARY PAVEMENT MARKING LETTERS AND SYMBOLS	SO FT	372	372				
70300220	TEMPORARY PAVEMENT MARKING - LINE 4"	FOOT	15135	15135				
70300240	TEMPORARY PAVEMENT MARKING - LINE 6"	FOOT	457	457				
70300250	TEMPORARY PAVEMENT MARKING - LINE 8"	FOOT	37	37				
70300260	TEMPORARY PAVEMENT MARKING - LINE 12"	FOOT	170	170				
70300280	TEMPORARY PAVEMENT MARKING - LINE 24"	FOOT	2853	2853				
70300520	PAVEMENT MARKING TAPE, TYPE III 4"	FOOT	1526	1526				
* 78000100	THERMOPLASTIC PAVEMENT MARKING - LETTERS AND SYMBOLS	SO FT	372	372				
* 78000200	THERMOPLASTIC PAVEMENT MARKING - LINE 4"	FOOT	15135	15135				
* 78000400	THERMOPLASTIC PAVEMENT MARKING - LINE 6"	FOOT	457	457				

REV-SEP

* = SPECIALTY ITEMS

FILE NAME =	USER NAME = Bllgramisa	DESIGNED -	REVISED -
dw:\planroom\dtd\illinois\gov\PI001\Documents\DOT Offices\District 1\Projects\043120\CADD\as\Design\043120-s-		DRAWN -	REVISED -
		CHECKED -	REVISED -
		DATE -	REVISED -

**STATE OF ILLINOIS
DEPARTMENT OF TRANSPORTATION**

SUMMARY OF QUANTITIES			
SCALE:	SHEET NO.	OF SHEETS	STA. TO STA.

F.A.P. RTE.	SECTION	COUNTY	TOTAL SHEETS	SHEET NO.
29	2020-048-R5&SW	COOK	24	4
FED. ROAD DIST. NO. 1 (ILLINOIS) FED. AID PROJECT			CONTRACT NO. 62L20	

SUMMARY OF QUANTITIES			TOTAL QUANTITIES URBAN	CONSTRUCTION TYPE CODE					
CODE NO	ITEM	UNIT		100% STATE 0005					
* 78000500	THERMOPLASTIC PAVEMENT MARKING - LINE 8"	FOOT	37	37					
* 78000600	THERMOPLASTIC PAVEMENT MARKING - LINE 12"	FOOT	170	170					
* 78000650	THERMOPLASTIC PAVEMENT MARKING - LINE 24"	FOOT	2853	2853					
X0320050	CONSTRUCTION LAYOUT (SPECIAL)	L SUM	1	1					
X4240800	DETECTABLE WARNINGS (SPECIAL)	SO FT	276	276					
X4400501	COMBINATION CURB AND GUTTER REMOVAL AND REPLACEMENT LESS THAN OR EQUAL TO 10 FEET	FOOT	1277	1277					
X5537800	STORM SEWERS TO BE CLEANED 12"	FOOT	240	240					
X6030310	FRAMES AND LIDS TO BE ADJUSTED (SPECIAL)	EACH	53	53					
X7030005	TEMPORARY PAVEMENT MARKING REMOVAL	SO FT	11546	11546					
Z0004562	COMBINATION CONCRETE CURB AND GUTTER REMOVAL AND REPLACEMENT	FOOT	1277	1277					
Z0018500	DRAINAGE STRUCTURES TO BE CLEANED	EACH	48	48					
Z0018600	DRAINAGE STRUCTURES TO BE RECONSTRUCTED	EACH	3	3					
Z0030850	TEMPORARY INFORMATION SIGNING	SO FT	51	51					

SUMMARY OF QUANTITIES			TOTAL QUANTITIES URBAN	CONSTRUCTION TYPE CODE					
CODE NO	ITEM	UNIT		100% STATE 0005					
Z0033700	LONGITUDINAL JOINT SEALANT	FOOT	4421	4421					

FILE NAME =	USER NAME = Bllgramisa	DESIGNED -	REVISED -
p:\n\p\tr\room\dtd\illinois\gov\p\1001\Documents\VDOT\Offices\District\Projects\043120\CAD\Drawings\Design\043120-sr-3-DRAWN		CHECKED -	REVISED -
		DATE -	REVISED -

**STATE OF ILLINOIS
DEPARTMENT OF TRANSPORTATION**

SUMMARY OF QUANTITIES			
SCALE:	SHEET NO.	OF SHEETS	STA. TO STA.

F.A.P. RTE.	SECTION	COUNTY	TOTAL SHEETS	SHEET NO.
29	2020-048-R5&SW	COOK	24	5
FED. ROAD DIST. NO. 1 ILLINOIS FED. AID PROJECT			CONTRACT NO. 62L20	

REV-SEP
= SPECIALTY ITEMS

LEGEND - EXISTING:

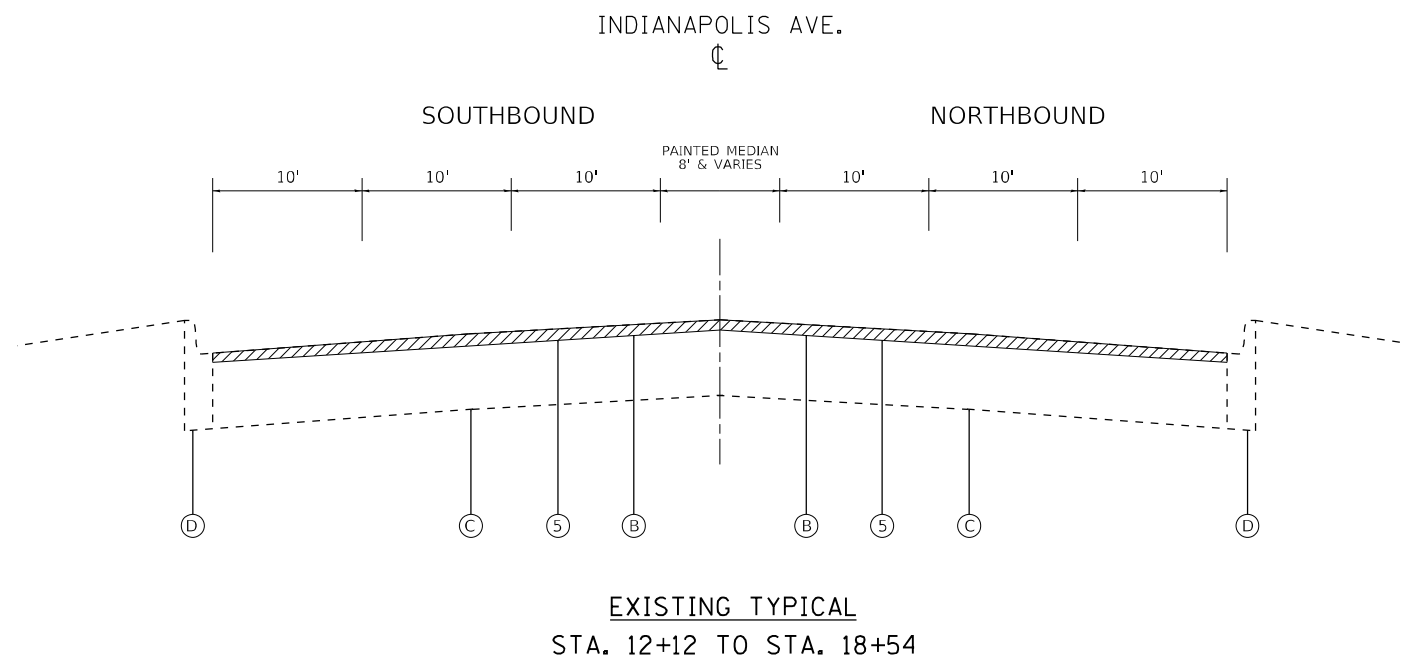
- (A) HOT-MIX ASPHALT PAVEMENT, 7.25" +/-
- (B) HOT-MIX ASPHALT PAVEMENT, 2.25" +/-
- (C) PORTLAND-CEMENT CONCRETE PAVEMENT, 11.5" +/-
- (D) COMBINATION CONCRETE CURB & GUTTER, B-6.12

LEGEND - PROPOSED

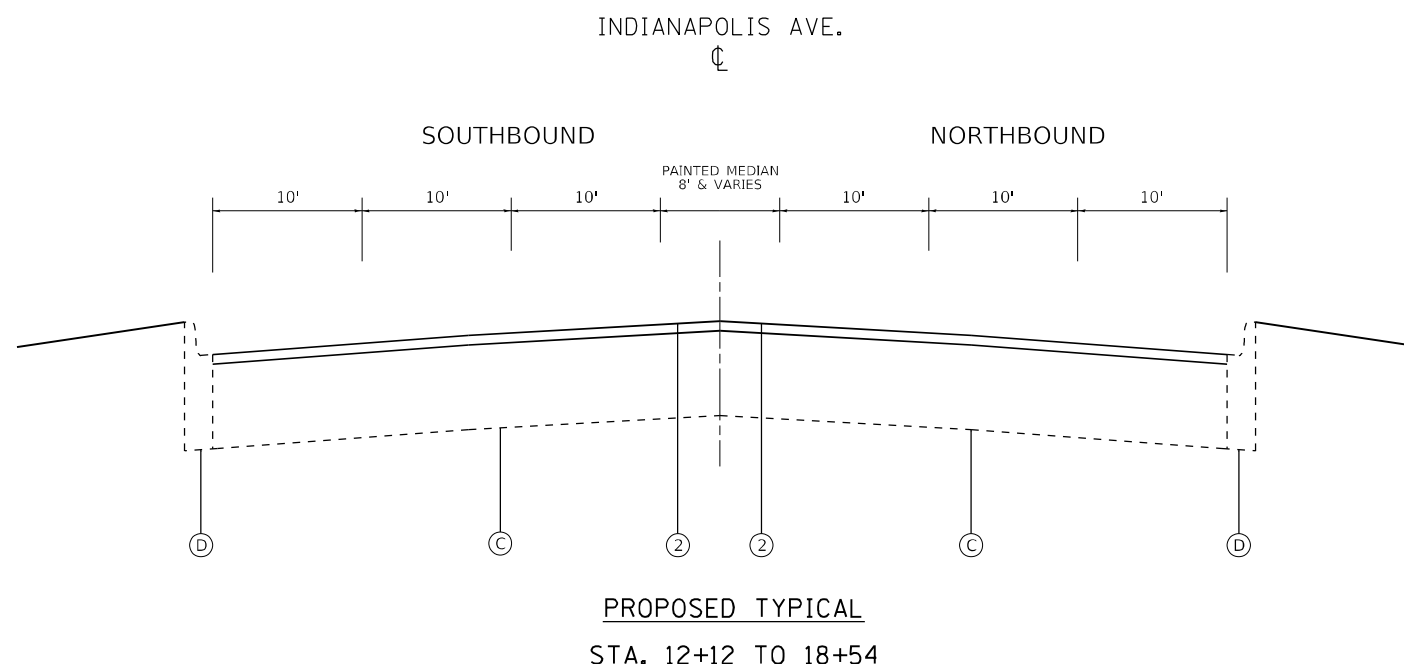
- ① HOT-MIX ASPHALT SURFACE COURSE, IL-9.5, MIX "D", N70; 1.5"
- ② HOT-MIX ASPHALT SURFACE COURSE, IL-9.5, MIX "D", N70; 2.0"
- ③ POLYMERIZED HOT-MIX ASPHALT BINDER COURSE, IL -4.75, N50; 0.75"
- ④ HOT-MIX ASPHALT SURFACE REMOVAL, 2.25"
- ⑤ HOT-MIX ASPHALT SURFACE REMOVAL, 2.0"
- ⑥ HOT-MIX ASPHALT SURFACE REMOVAL, 1.5"

NOTES:

- 1.) THE CONTRACTOR SHALL DO PATCHES BEFORE MILLING.
- 2.) THE LONGITUDINAL JOINT SEALANT SHALL BE PLACED OVER POLY HMA BINDER COURSE, IL-4.75, N50 ON AVENUE L AND OVER THE MILLED SURFACE ON INDIANAPOLIS AVENUE.



EXISTING TYPICAL
STA. 12+12 TO STA. 18+54



PROPOSED TYPICAL
STA. 12+12 TO 18+54

HOT-MIX ASPHALT MIXTURE REQUIREMENTS		QUALITY MANAGEMENT PROGRAM (QMP)
MIXTURE TYPE	AIR VOIDS @ Ndes	
STANDARD OVERLAY – AVENUE L		
HOT-MIX ASPHALT SURFACE COURSE, IL-9.5, MIX "D", N70; 1 ½"	4.0% AT 70 GYR	QCP
POLYMERIZED HOT-MIX ASPHALT BINDER COURSE, IL-4.75, N50; ¾"	3.5% AT 50 GYR	QC/QA
PARKING LANES – AVENUE L		
HOT-MIX ASPHALT SURFACE COURSE, IL-9.5, MIX "D", N70; 1 ½"	4.0% AT 70 GYR	QCP
HMA PAVEMENT AND SHOULDER SMART OVERLAY – INDIANAPOLIS AVE.		
HOT-MIX ASPHALT SURFACE COURSE, IL-9.5, MIX "D", N70; 2.0"	4.0% AT 70 GYR	QCP
PATCHING		
CLASS D PATCHES (HMA BINDER IL-19 mm)	4.0% AT 70 GYR	QC/QA
HMA REPLACEMENT OVER PATCHES (HMA BINDER IL-19 mm)	4.0% AT 70 GYR	QC/QA
QMP DESIGNATION: QUALITY CONTROL/QUALITY ASSURANCE (QC/QA); QUALITY CONTROL FOR PERFORMANCE (QCP); PAY FOR PERFORMANCE (PFP)		

- NOTE 1: THE UNIT WEIGHT USED TO CALCULATE ALL HMA SURFACE MIXTURE QUANTITIES IS 112 LBS/SQ YD/IN.
- NOTE 2: THE "AC TYPE" FOR POLYMERIZED HMA MIXES SHALL BE "SBS/SBR PG 76-22" AND FOR NON-POLYMERIZED HMA THE "AC TYPE" SHALL BE "PG 64-22" UNLESS MODIFIED BY SPECIAL PROVISIONS. FOR USE OF RECYCLED MATERIALS SEE SPECIAL PROVISIONS.
- NOTE 3: QUALITY MANAGEMENT PROGRAM (QMP) IDENTIFIES THE PARTICULAR QUALITY CONTROL SPECIFICATION THAT APPLIES TO THE HMA MIXTURE.

MODEL: Default
 FILE NAME: p:\pub\mroom.dwt\illinois.gov\PWIDOT\Documents\DOT_Offices\Distrefc_1\Projects\143120\CADD\Design\143120-shs-by-pica.dgn

USER NAME = Billgramisa	DESIGNED -	REVISED -
	DRAWN -	REVISED -
PLOT SCALE = 100,0000' / in.	CHECKED -	REVISED -
PLOT DATE = 3/5/2021	DATE -	REVISED -

**STATE OF ILLINOIS
DEPARTMENT OF TRANSPORTATION**

TYPICAL SECTIONS AVENUE L – US 12 /20 (95TH ST.) TO INDIANAPOLIS AVE.		F.A.P. RTE.	SECTION	COUNTY	TOTAL SHEETS	SHEET NO.
		29	2020-048-R5&SW	COOK	24	6
SCALE:		SHEET OF SHEETS		STA. TO STA.		ILLINOIS FED. AID PROJECT
				CONTRACT NO. 62L20		

LEGEND - EXISTING:

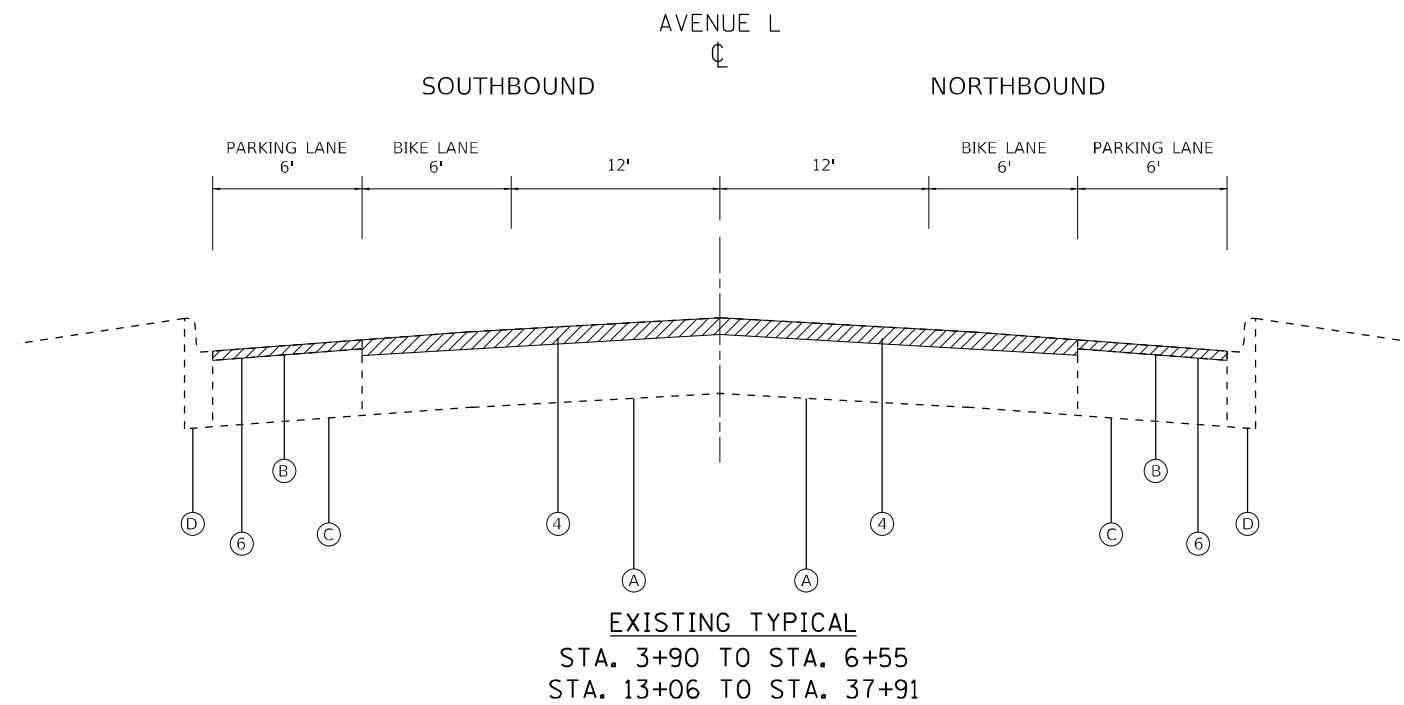
- (A) HOT-MIX ASPHALT PAVEMENT, 7.25" +/-
- (B) HOT-MIX ASPHALT PAVEMENT, 2.25" +/-
- (C) PORTLAND-CEMENT CONCRETE PAVEMENT, 11.5" +/-
- (D) COMBINATION CONCRETE CURB & GUTTER, B-6.12

LEGEND - PROPOSED

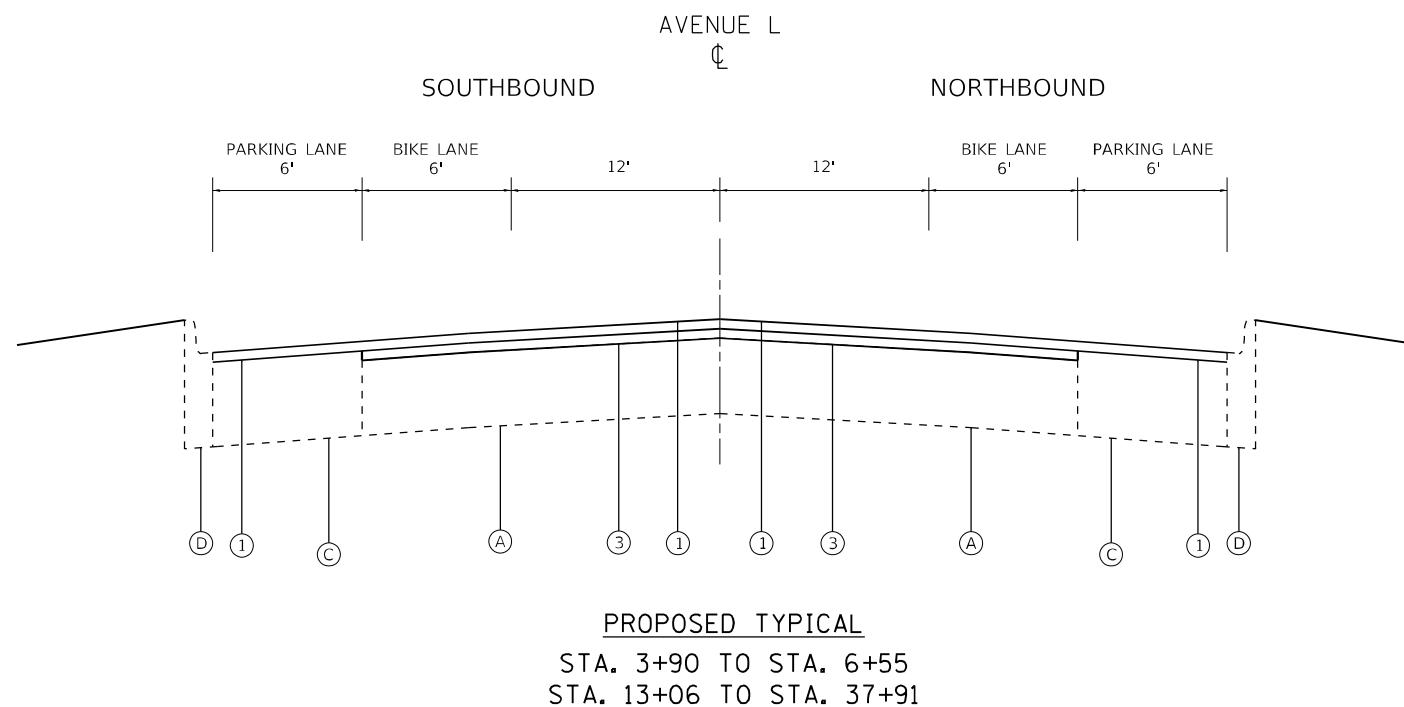
- (1) HOT-MIX ASPHALT SURFACE COURSE, IL-9.5, MIX "D", N70; 1.5"
- (2) HOT-MIX ASPHALT SURFACE COURSE, IL-9.5, MIX "D", N70; 2.0"
- (3) POLYMERIZED HOT-MIX ASPHALT BINDER COURSE, IL -4.75, N50; 0.75"
- (4) HOT-MIX ASPHALT SURFACE REMOVAL, 2.25"
- (5) HOT-MIX ASPHALT SURFACE REMOVAL, 2.0"
- (6) HOT-MIX ASPHALT SURFACE REMOVAL, 1.5"

NOTES:

- 1.) THE CONTRACTOR SHALL DO PATCHES BEFORE MILLING.
- 2.) THE LONGITUDINAL JOINT SEALANT SHALL BE PLACED OVER HMA BINDER COURSE, IL-9.5, N70 ON AVENUE L AND OVER THE MILLED SURFACE ON INDIANAPOLIS AVENUE.



NOTE: NO PARKING LANE FROM STA. 5+54 TO STA. 6+55



NOTE: NO PARKING LANE FROM STA. 5+54 TO STA. 6+55

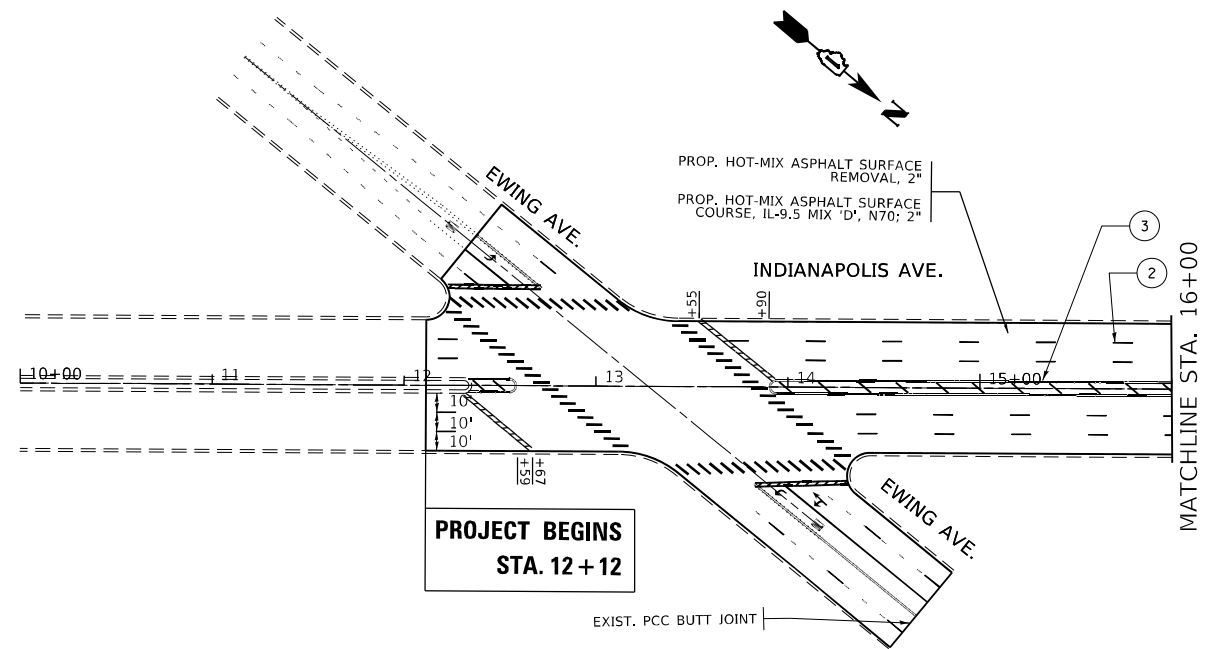
MODEL: Default
FILE NAME: p:\mhammon.dwt\illinois.gov\PWIDOT\Documents\DOT_Offices\District_1\Projects\143120\CADD\Drawings\143120-shs-by-pica.dgn

USER NAME = Bilgramisa	DESIGNED -	REVISED -
PLOT SCALE = 100,0000' / in.	DRAWN -	REVISED -
PLOT DATE = 3/5/2021	CHECKED -	REVISED -
	DATE -	REVISED -

**STATE OF ILLINOIS
DEPARTMENT OF TRANSPORTATION**

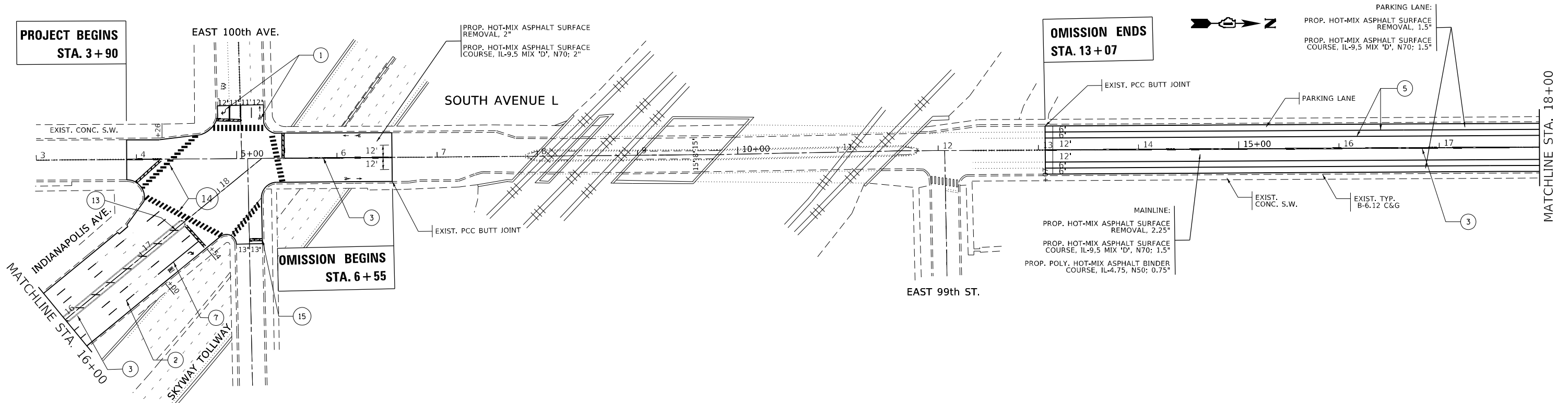
TYPICAL SECTIONS			
AVENUE L - US 12 /20 (95TH ST.) TO INDIANAPOLIS AVE.			
SCALE:	SHEET	OF	SHEETS
	STA.	TO	STA.

F.A.P. RTE.	SECTION	COUNTY	TOTAL SHEETS	SHEET NO.
29	2020-048-R5&SW	COOK	24	7
CONTRACT NO. 62L20				
ILLINOIS FED. AID PROJECT				



PAVEMENT MARKING LEGEND

① PROPOSED THERMOPLASTIC PAVEMENT MARKING LETTERS AND SYMBOLS, WHITE	⑥ PROPOSED THERMOPLASTIC PAVEMENT MARKING, 4" DOTTED WHITE LINE (2' LINE WITH 6' SPACE)	⑪ PROPOSED THERMOPLASTIC PAVEMENT MARKING, 12" SOLID WHITE ISLAND LINE (DIAGONAL AT 6" C-C)
② PROPOSED THERMOPLASTIC PAVEMENT MARKING, 4" WHITE LANE LINES (6' LINE WITH 18" SPACE)	⑦ PROPOSED THERMOPLASTIC PAVEMENT MARKING, 6" SOLID WHITE TURN LANE LINE	⑫ PROPOSED THERMOPLASTIC PAVEMENT MARKING, 12" SOLID WHITE CHANNELIZING LINES (DIAGONAL AT 20' C-C)
③ PROPOSED THERMOPLASTIC PAVEMENT MARKING, 4" SOLID DOUBLE YELLOW CENTERLINE, 8" C-C	⑧ PROPOSED THERMOPLASTIC PAVEMENT MARKING, 6" DOTTED WHITE TURN LANE LINE (2' LINE WITH 6' SPACE)	⑬ PROPOSED THERMOPLASTIC PAVEMENT MARKING, 12" SOLID YELLOW PAINTED MEDIAN LINE (DIAGONAL AT 20' C-C)
④ PROPOSED THERMOPLASTIC PAVEMENT MARKING, 4" YELLOW EDGE LINE	⑨ PROPOSED THERMOPLASTIC PAVEMENT MARKING, 8" SOLID WHITE GORE MARKING	⑭ PROPOSED THERMOPLASTIC PAVEMENT MARKING, 24" SOLID WHITE LONGITUDINAL BARS (6' LENGTH, 2" SPACING)
⑤ PROPOSED THERMOPLASTIC PAVEMENT MARKING, 4" WHITE PARKING LANE LINE	⑩ PROPOSED THERMOPLASTIC PAVEMENT MARKING, 8" SOLID WHITE ISLAND	⑮ PROPOSED THERMOPLASTIC PAVEMENT MARKING, 24" SOLID WHITE STOP LINE



MODEL: Default
 FILE NAME: p:\planning\2020\048-R5&SW\DOT Documents\DOT - Office\Drawings - 1\Project\143120\CADD\Drawings\Design\143120-sh-4-bn.dwg
 PROJECT: 143120-CADD\Drawings\Design\143120-sh-4-bn.dwg

USER NAME = bilgramisa	DESIGNED -	REVISED -
PLOT SCALE = 100,0000' / in.	DRAWN -	REVISED -
PLOT DATE = 3/5/2021	CHECKED -	REVISED -
	DATE -	REVISED -

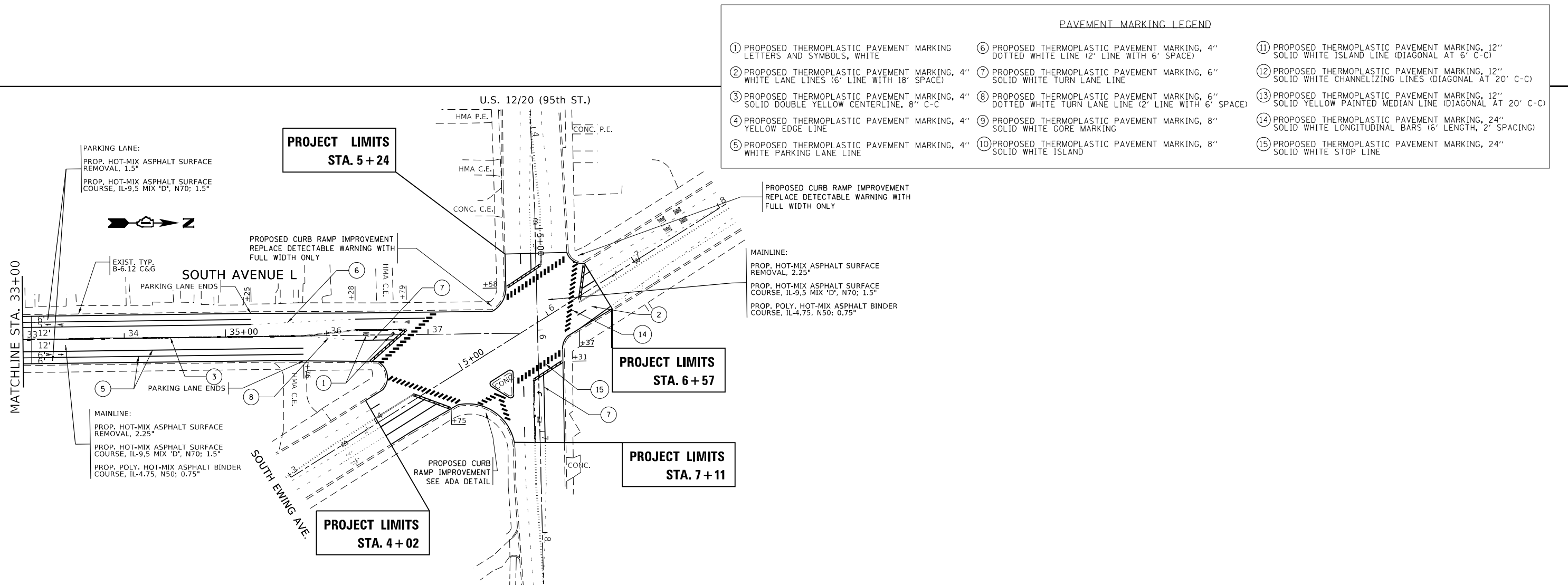
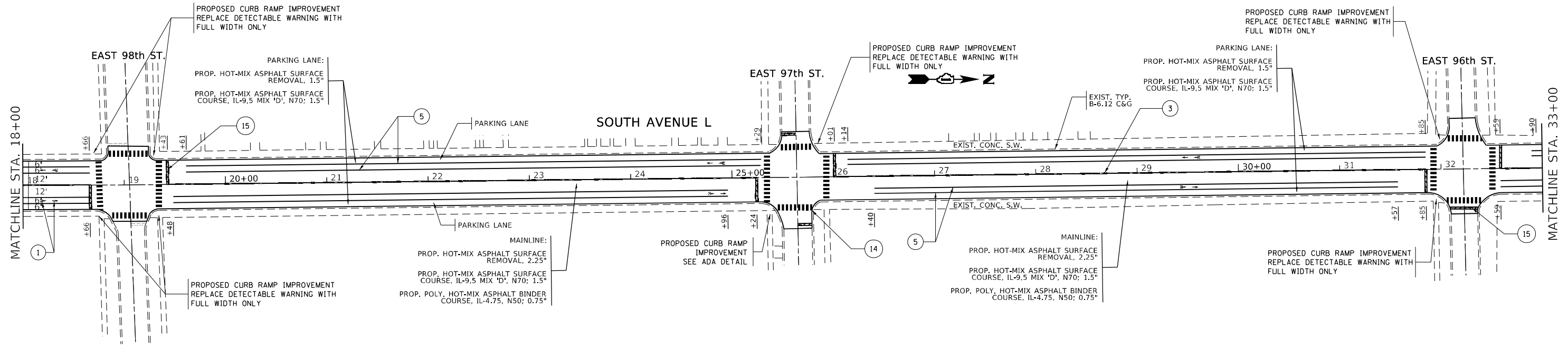
**STATE OF ILLINOIS
DEPARTMENT OF TRANSPORTATION**

**PROPOSED ROADWAY PLAN AVENUE L
U.S. 12 / 20 (95TH ST.) TO INDIANAPOLIS AVE.**

SCALE: 1"=50'

SHEET	OF	SHEETS	STA.	TO	STA.
-------	----	--------	------	----	------

F.A.P. RTE.	SECTION	COUNTY	TOTAL SHEETS	SHEET NO.
29	2020-048-R5&SW	COOK	24	8
CONTRACT NO. 62L20				
ILLINOIS		FED. AID PROJECT		



PAVEMENT MARKING LEGEND

① PROPOSED THERMOPLASTIC PAVEMENT MARKING LETTERS AND SYMBOLS, WHITE	⑥ PROPOSED THERMOPLASTIC PAVEMENT MARKING, 4" DOTTED WHITE LINE (2' LINE WITH 6' SPACE)	⑪ PROPOSED THERMOPLASTIC PAVEMENT MARKING, 12" SOLID WHITE ISLAND LINE (DIAGONAL AT 6' C-C)
② PROPOSED THERMOPLASTIC PAVEMENT MARKING, 4" WHITE LANE LINES (6' LINE WITH 18' SPACE)	⑦ PROPOSED THERMOPLASTIC PAVEMENT MARKING, 6" SOLID WHITE TURN LANE LINE	⑫ PROPOSED THERMOPLASTIC PAVEMENT MARKING, 12" SOLID WHITE CHANNELIZING LINES (DIAGONAL AT 20' C-C)
③ PROPOSED THERMOPLASTIC PAVEMENT MARKING, 4" SOLID DOUBLE YELLOW CENTERLINE, 8" C-C	⑧ PROPOSED THERMOPLASTIC PAVEMENT MARKING, 6" DOTTED WHITE TURN LANE LINE (2' LINE WITH 6' SPACE)	⑬ PROPOSED THERMOPLASTIC PAVEMENT MARKING, 12" SOLID YELLOW PAINTED MEDIAN LINE (DIAGONAL AT 20' C-C)
④ PROPOSED THERMOPLASTIC PAVEMENT MARKING, 4" YELLOW EDGE LINE	⑨ PROPOSED THERMOPLASTIC PAVEMENT MARKING, 8" SOLID WHITE GORE MARKING	⑭ PROPOSED THERMOPLASTIC PAVEMENT MARKING, 24" SOLID WHITE LONGITUDINAL BARS (6' LENGTH, 2" SPACING)
⑤ PROPOSED THERMOPLASTIC PAVEMENT MARKING, 4" WHITE PARKING LANE LINE	⑩ PROPOSED THERMOPLASTIC PAVEMENT MARKING, 8" SOLID WHITE ISLAND	⑮ PROPOSED THERMOPLASTIC PAVEMENT MARKING, 24" SOLID WHITE STOP LINE

MODEL: Default
 FILE NAME: p:\pub\harrington.dwg
 PROJECT: 2020-048-R5&SW
 OFFICE: DISTRICT 1
 DATE: 3/5/2021

USER NAME =	DESIGNED -	REVISED -
PLOT SCALE =	DRAWN -	REVISED -
PLOT DATE =	CHECKED -	REVISED -
	DATE -	REVISED -

**STATE OF ILLINOIS
DEPARTMENT OF TRANSPORTATION**

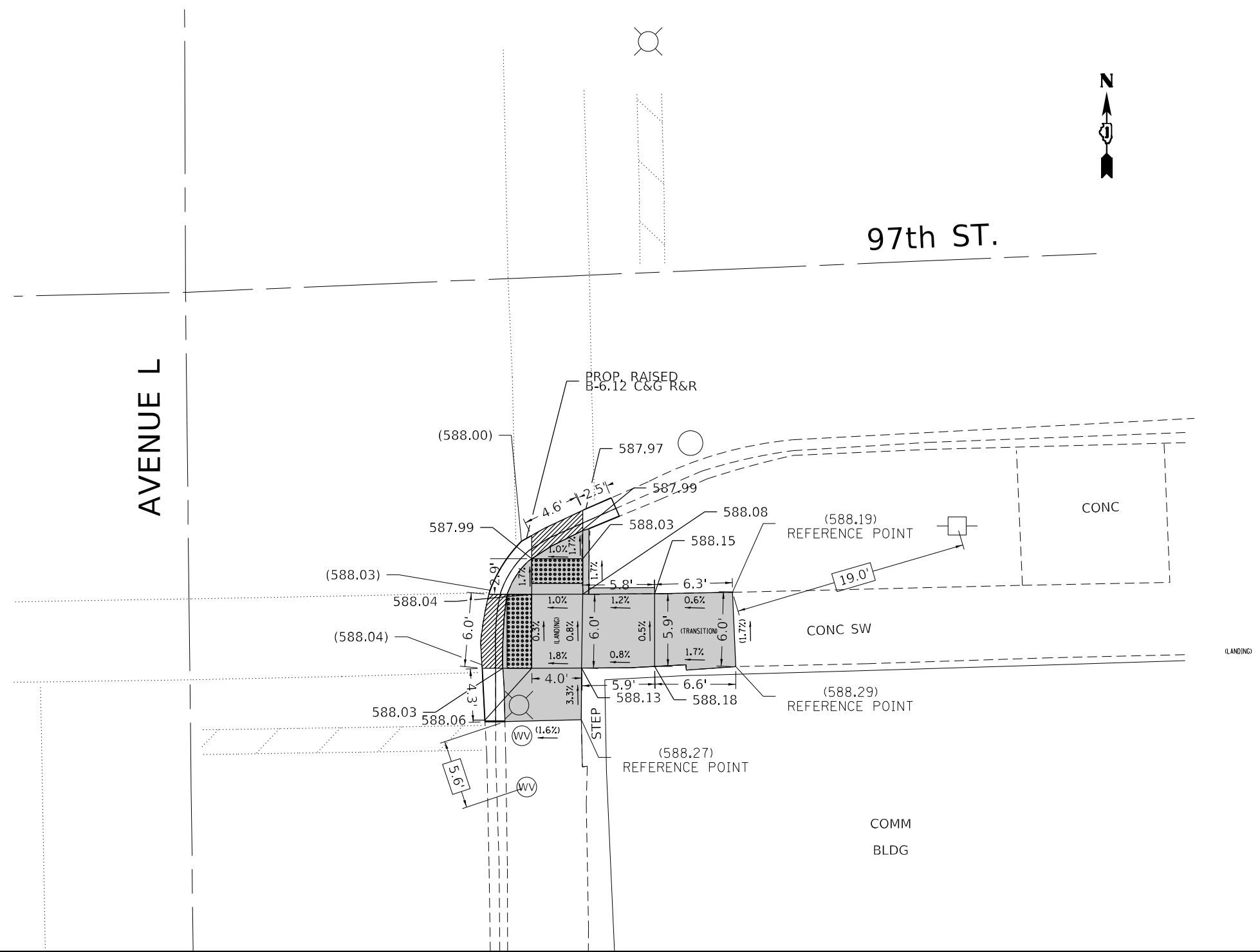
**PROPOSED ROADWAY PLAN AVENUE L
U.S. 12 /20 (95TH ST.) TO INDIANAPOLIS AVE.**

SCALE: 1"=50' SHEET OF SHEETS STA. TO STA.

F.A.P. RTE.	SECTION	COUNTY	TOTAL SHEETS	SHEET NO.
29	2020-048-R5&SW	COOK	24	9
CONTRACT NO. 62L20				
ILLINOIS		FED. AID PROJECT		

AVENUE L

97th ST.



LEGEND

- xx.xx' EXISTING LENGTH
- ===== PROPOSED SIDE CURB
- () EXISTING ELEVATION/SLOPE

- PROPOSED DEPRESSED CURB & GUTTER (PAID FOR AS "COMBINATION CURB AND GUTTER REMOVAL AND REPLACEMENT")
- PROPOSED SIDEWALK (PAID FOR AS "PORTLAND CEMENT CONCRETE SIDEWALK 5 INCH")
- DETECTABLE WARNINGS

REFERENCE BENCHMARK ELEV 589.32
 BENCHMARK DESCRIPTION: X-CUT ON NORTH BOLT OF FIRE HYDRANT
 BENCHMARK LOCATION: IN THE NE CORNER OF 97TH STREET AND AVENUE L

MODEL: Default
 FILE NAME: p:\data\mason.dwg
 PROJECT: 2020-048-R5&SW
 OFFICE: DISTRICT OFFICE
 DESIGNER: BILGRAMISA
 DATE: 3/5/2021

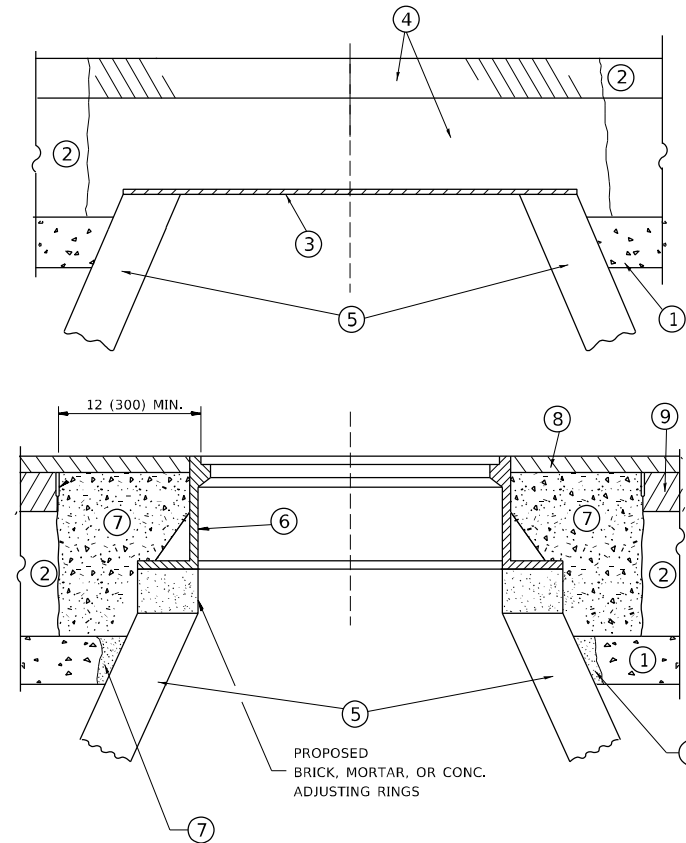
USER NAME = Bilgramisa	DESIGNED -	REVISED -
PLOT SCALE = 10,0000 * / in.	DRAWN -	REVISED -
PLOT DATE = 3/5/2021	CHECKED -	REVISED -
	DATE -	REVISED -

**STATE OF ILLINOIS
 DEPARTMENT OF TRANSPORTATION**

**SIDEWALK DETAIL PLAN
 INTERSECTION OF 97TH STREET AND AVENUE L**

SCALE: SHEET OF SHEETS STA. TO STA.

F.A.P. RTE.	SECTION	COUNTY	TOTAL SHEETS	SHEET NO.
29	2020-048-R5&SW	COOK	24	10
CONTRACT NO. 62L20				
ILLINOIS FED. AID PROJECT				



CONSTRUCTION PROCEDURES

STAGE 1 (BEFORE PAVEMENT MILLING)

- A) REMOVE A MINIMUM OF 12 (300) OF THE PAVEMENT FROM AROUND THE STRUCTURE.
- B) REMOVE THE EXISTING FRAME AND LID FROM THE STRUCTURE.
- C) COVER THE STRUCTURE OPENING WITH A 36 (900) DIAMETER METAL PLATE.
- D) BACKFILL WITH CRUSHED STONE AND A MINIMUM 1½ (40) THICK HMA SURFACE MIX APPROVED BY THE ENGINEER.

STAGE 2 (AFTER PAVEMENT MILLING)

- A) REMOVE THE HMA SURFACE MIX AND CRUSHED STONE.
- B) INSTALL THE FRAME AND LID; ADJUST THE FRAME TO ITS FINAL SURFACE ELEVATION.
- C) THE SURROUNDING SPACE SHALL BE FILLED WITH CLASS PP-1 * CONCRETE TO THE ELEVATION OF THE SURFACE OF THE EXISTING BASE COURSE OR THE BINDER COURSE.

* UNLESS OTHERWISE SPECIFIED IN THE PLANS.

THE PROCEDURE EXPLAINED ABOVE SHALL CONFORM TO THE APPLICABLE PORTIONS OF SECTIONS 353, 406, 602, AND 603 OF THE STANDARD SPECIFICATIONS EXCEPT THAT "THE CONTRACTOR SHALL ADJUST THE STRUCTURES TO THE FINISHED PAVEMENT ELEVATION NO MORE THAN 5 CALENDAR DAYS PRIOR TO PLACEMENT OF THE FINAL LIFT OF SURFACE UNLESS APPROVED BY THE ENGINEER."

LEGEND

- ① SUB-BASE GRANULAR MATERIAL
- ② EXISTING PAVEMENT
- ③ 36 (900) DIAMETER METAL PLATE
- ④ PROPOSED CRUSHED STONE AND HMA SURFACE MIX
- ⑤ EXISTING STRUCTURE
- ⑥ FRAME AND LID (SEE NOTES)
- ⑦ CLASS PP-1 *CONCRETE
- ⑧ PROPOSED HMA SURFACE COURSE
- ⑨ PROPOSED HMA BINDER COURSE

LOCATION OF STRUCTURES

THE CONTRACTOR WILL BE REQUIRED TO KEEP A RECORD OF THE LOCATIONS OF THE BURIED STRUCTURES ACCORDING TO THE STATION AND DISTANCE LEFT OR RIGHT OF THE CENTERLINE OF PAVEMENT. UPON COMPLETION OF THE WORK, THE CONTRACTOR WILL DELIVER THE RECORD TO THE ENGINEER.

BASIS OF PAYMENT

REMOVING FRAMES AND LIDS ON DRAINAGE AND UTILITY STRUCTURES IN THE PAVEMENT PRIOR TO MILLING, AND ADJUSTING TO FINAL GRADE PRIOR TO PLACING THE SURFACE COURSE, WILL BE PAID FOR AT THE CONTRACT UNIT PRICE EACH FOR "FRAMES AND LIDS TO BE ADJUSTED (SPECIAL)."

THIS WORK WILL NOT BE PAID FOR WHEN DRAINAGE AND UTILITY STRUCTURES ARE SPECIFIED FOR PAYMENT AS STRUCTURE RECONSTRUCTION.

NEW FRAMES AND LIDS, WHEN SPECIFIED, WILL BE PAID FOR SEPARATELY.

NOTES

EXISTING BROKEN FRAMES AND LIDS SHALL BE REMOVED AND DISPOSED OF BY THE CONTRACTOR AND SHALL BE REPLACED AS DIRECTED BY THE ENGINEER. REPLACEMENT FRAMES AND LIDS WILL BE PAID FOR IN ACCORDANCE WITH ARTICLE 109.04 OF THE STANDARD SPECIFICATIONS UNLESS A SEPARATE PAY ITEM HAS BEEN PROVIDED.

IF THE EXISTING LIDS ARE OPEN, THE FRAME WILL BE ADJUSTED TO THE ELEVATION OF THE MILLED PAVEMENT SURFACE PRIOR TO THE MILLING OPERATION. THE FRAME WILL NOT BE REMOVED AND COVERED BY THE METAL PLATE.

CITY OF CHICAGO CASTINGS ARE THE PROPERTY OF THE CITY AND THE CONTRACTOR SHALL NOTIFY THE CITY FOR REMOVAL AND DISPOSITION OF THE CASTINGS.

THE METAL PLATE USED TO COVER THE STRUCTURE SHALL REMAIN THE PROPERTY OF THE CONTRACTOR.

WHEN STRUCTURES ARE TO BE ADJUSTED OR RECONSTRUCTED, THE LOWERING AND RAISING OF THE FRAMES AND LIDS WILL NOT BE PAID FOR SEPARATELY BUT WILL BE INCLUDED IN THE COST OF THE CORRESPONDING PAY ITEM.

DETAILS FOR FRAMES AND LIDS ADJUSTMENT WITH MILLING

ALL DIMENSIONS ARE IN INCHES (MILLIMETERS) UNLESS OTHERWISE SHOWN

MODEL: Default
 FILE NAME: p:\data\mroom.dwg
 PROJECT: P:\DOT\Documents\DOT - Office\Drawings - 1\Project\143120\CADD\Drawings\Design\DRS54.dwg

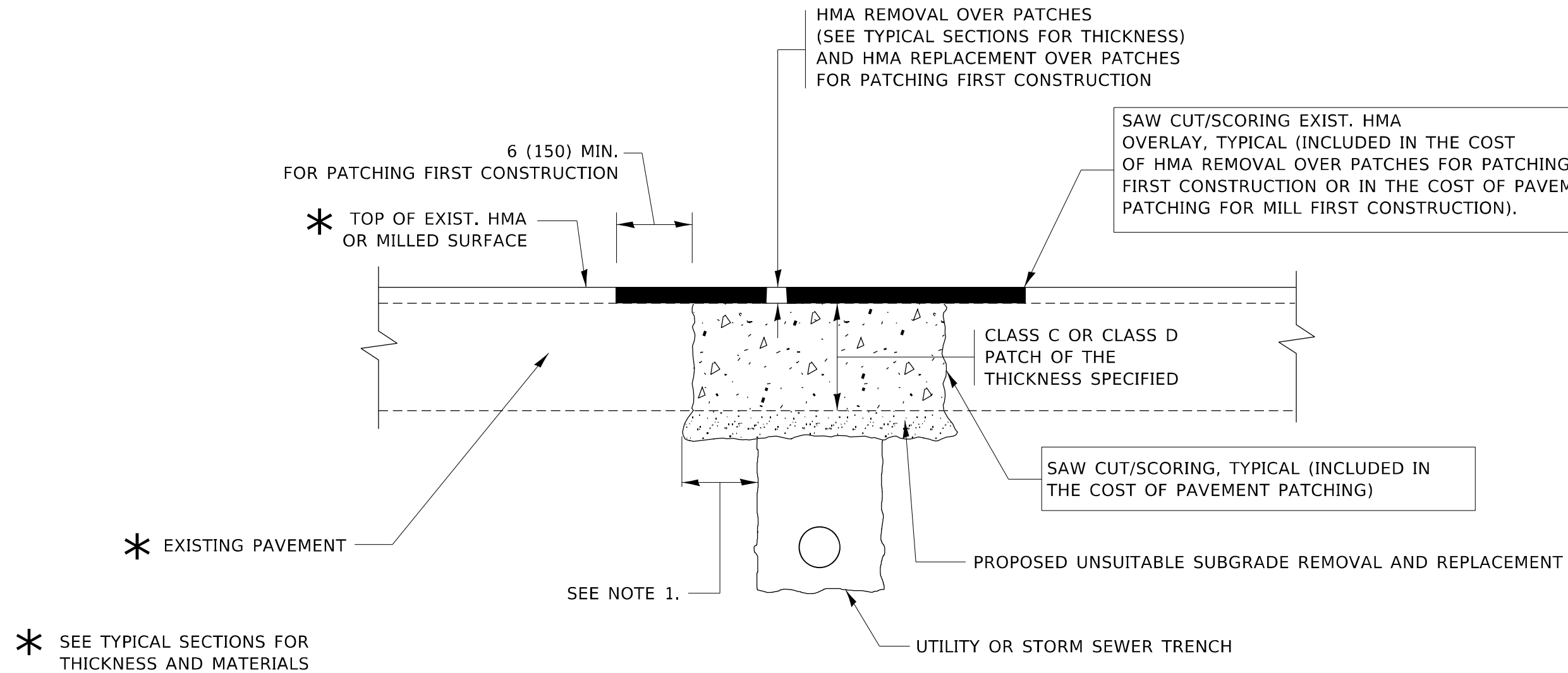
USER NAME = bilgramisa	DESIGNED - R. SHAH	REVISED - R. WEDEMAN 05-14-04
	DRAWN -	REVISED - R. BORO 01-01-07
PLOT SCALE = 100,0000' / in.	CHECKED -	REVISED - R. BORO 03-09-11
PLOT DATE = 3/5/2021	DATE - 10-25-94	REVISED - R. BORO 12-06-11

**STATE OF ILLINOIS
DEPARTMENT OF TRANSPORTATION**

**DETAILS FOR
FRAMES AND LIDS ADJUSTMENT WITH MILLING**

SCALE: NONE SHEET 1 OF 1 SHEETS STA. TO STA.

F.A.P. RTE.	SECTION	COUNTY	TOTAL SHEETS	SHEET NO.
29	2020-048-R5&SW	COOK	24	12
BD600-03 (BD-8)		CONTRACT NO. 62L20		
ILLINOIS FED. AID PROJECT				



NOTES:

1. THE WIDTH OF THE FULL DEPTH PATCH OVER A TRENCH SHALL BE 12 (300) WIDER ON EACH SIDE OF THE TRENCH.
2. FOR METHOD OF MEASUREMENT AND BASIS OF PAYMENT, SEE RECURRING SPECIAL PROVISION "PATCHING WITH HOT-MIX ASPHALT OVERLAY REMOVAL".

SEQUENCE OF CONSTRUCTION (PATCHING FIRST)

1. REMOVE THE EXISTING HMA MATERIAL OVER THE AREA TO BE PATCHED.
2. REMOVE AND REPLACE WITH CLASS C OR D PATCH.
3. REPLACE HMA MATERIAL OVER THE AREA TO BE PATCHED.

SEQUENCE OF CONSTRUCTION (MILLING FIRST)

1. MILL HMA FIRST IF THERE IS AT LEAST 4½ INCHES OR MORE OF HMA MATERIAL ON TOP OF THE EXISTING PAVEMENT OR IF THE PAVEMENT IS FULL DEPTH HMA. A MINIMUM OF 2 INCHES OF HMA MATERIAL SHALL BE IN PLACE AFTER MILLING.
2. REMOVE AND REPLACE WITH FULL DEPTH CLASS D PATCHES TO TOP OF MILLED SURFACE.

ALL DIMENSIONS ARE IN INCHES (MILLIMETERS) UNLESS OTHERWISE SHOWN.

MODEL: Default
FILE NAME: p:\pub\harrington.edu\illinois.gov\PIWDOT\Documents\DOT_Offices\District 1\Projects\143120\CADD\Design\Design\DESIGN.dgn

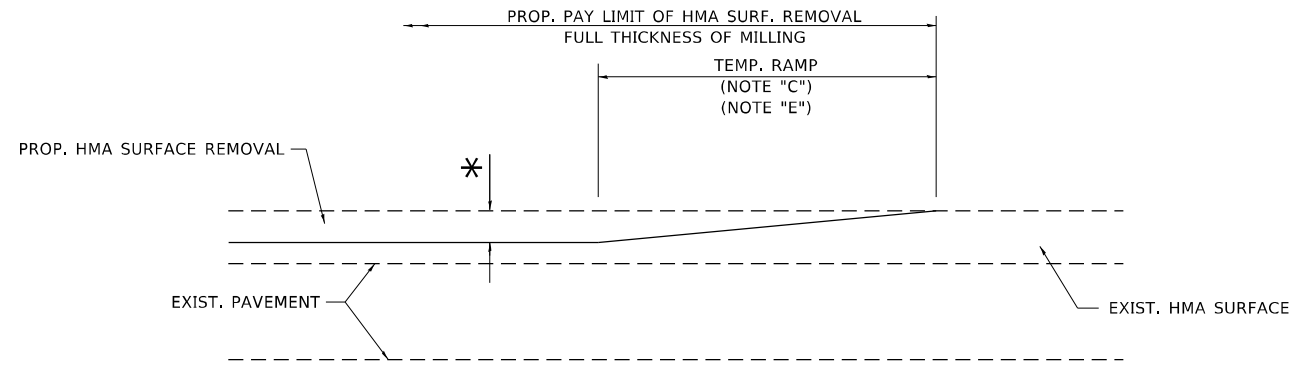
USER NAME = Bilgramisa	DESIGNED - R. SHAH	REVISED - A. ABBAS 04-27-98
	DRAWN -	REVISED - R. BORO 01-01-07
PLOT SCALE = 100,0000' / in.	CHECKED -	REVISED - R. BORO 09-04-07
PLOT DATE = 3/5/2021	DATE - 10-25-94	REVISED - K. ENG 10-27-08

STATE OF ILLINOIS
DEPARTMENT OF TRANSPORTATION

PAVEMENT PATCHING FOR
HMA SURFACED PAVEMENT

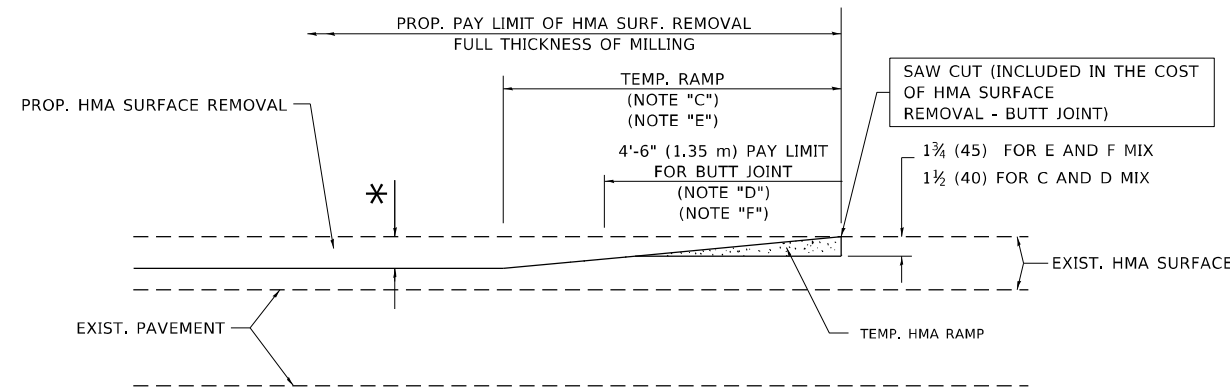
SCALE: NONE SHEET 1 OF 1 SHEETS STA. TO STA.

F.A.P. RTE.	SECTION	COUNTY	TOTAL SHEETS	SHEET NO.
29	2020-048-R5&SW	COOK	24	13
BD400-04 (BD-22)		CONTRACT NO. 62L20		
ILLINOIS FED. AID PROJECT				



MILLED TEMPORARY RAMP
(FOR BUTT JOINT AND HMA TAPER SEE DETAIL BELOW)

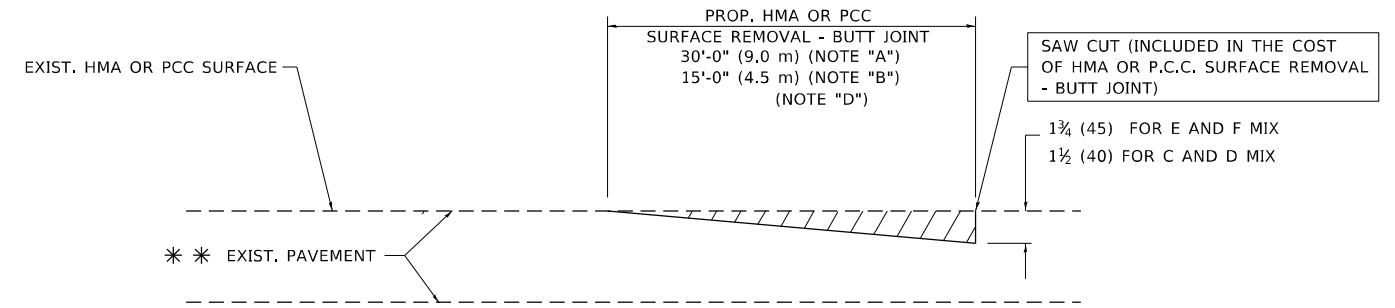
OPTION 1



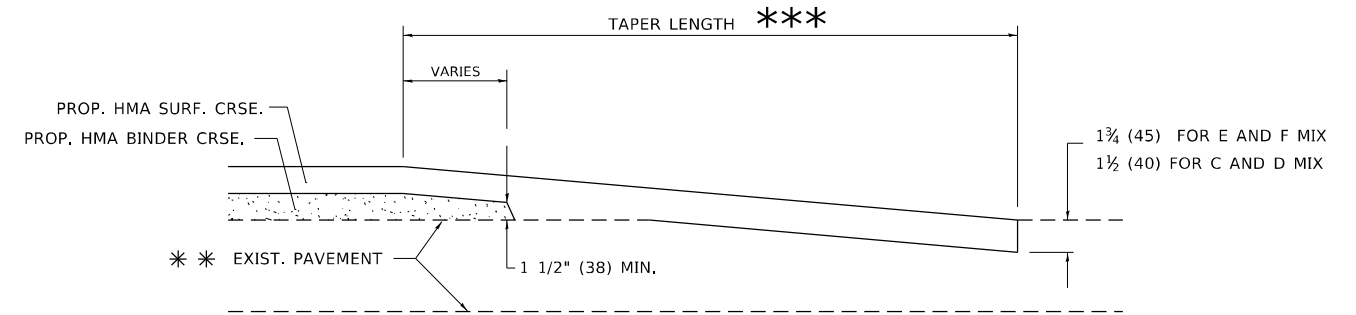
HMA CONSTRUCTED TEMPORARY RAMP
(FOR BUTT JOINT AND HMA TAPER SEE DETAIL BELOW)

OPTION 2

TYPICAL TEMPORARY RAMP



BUTT JOINT DETAIL



HMA TAPER DETAIL

TYPICAL BUTT JOINT AND HMA TAPER FOR RESURFACING ONLY

*** PC CONCRETE, HMA OR HMA RESURFACED PAVEMENT.

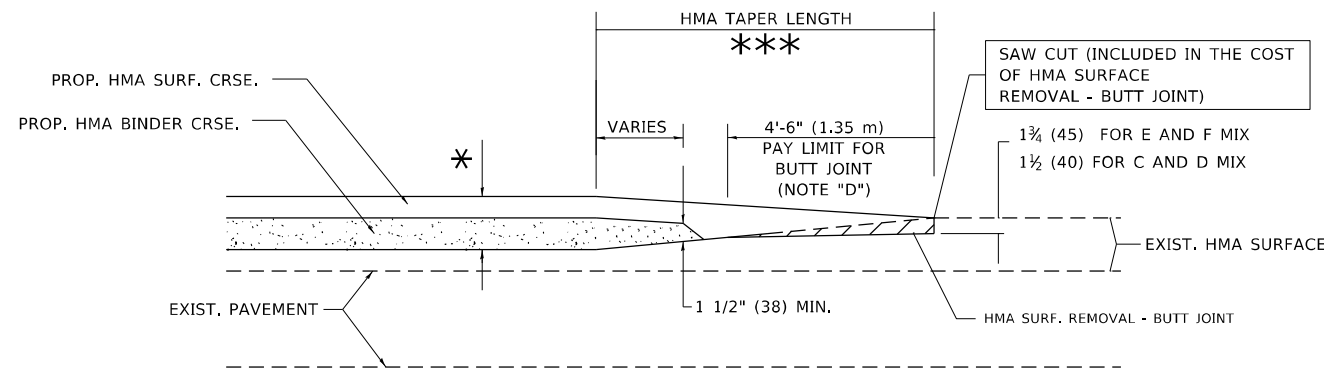
NOTES

- A. MAINLINE ROADWAYS AND MAJOR SIDE ROADS.
- B. MINOR SIDE ROADS.
- C. THE TEMP. RAMP SHALL BE CONSTRUCTED IMMEDIATELY UPON REMOVAL OF THE EXISTING HMA SURFACE.
- D. THE BUTT JOINT SHALL BE CONSTRUCTED IMMEDIATELY PRIOR TO PLACING THE PROPOSED HMA COURSES.
- E. TAPER THE TEMP. RAMP AT A RATE OF 3'-0" (900 mm) PER 1 INCH (25 mm) OF MILLING THICKNESS.
- F. INSTALLATION AND REMOVAL OF THE 4'-6" (1.35 m) TEMP. RAMP IS INCLUDED IN COST OF HMA SURFACE REMOVAL - BUTT JOINT.
* SEE TYPICAL SECTIONS FOR MILLING THICKNESS.
- G. SEE ARTICLE 406.08 AND 406.14 OF THE STANDARD SPECIFICATIONS FOR "HMA AND/OR PCC SURFACE REMOVAL, BUTT JOINT".
*** 20'-0" (6.1 m) PER 1 (25) RESURFACING (NOTE "A")
10'-0" (3.0 m) PER 1 (25) RESURFACING (NOTE "B")

BASIS OF PAYMENT

THE BUTT JOINT WILL BE PAID FOR AT THE CONTRACT UNIT PRICE PER SQUARE YARD (SQUARE METER) FOR "HOT-MIX ASPHALT SURFACE REMOVAL - BUTT JOINT" OR FOR "PORTLAND CEMENT CONCRETE SURFACE REMOVAL - BUTT JOINT".

ALL DIMENSIONS ARE IN INCHES (MILLIMETERS) UNLESS OTHERWISE SHOWN.



BUTT JOINT AND HMA TAPER

TYPICAL BUTT JOINT AND HMA TAPER FOR MILLING AND RESURFACING

MODEL: Default
FILE NAME: p:\mhammon.dwg
PROJECT: 143120\CD\Drawings\DOT - Office\Drawings - 1\Project\143120\CD\Drawings\Design\DOT\DOT.dwg

USER NAME = bilgramisa	DESIGNED - M. DE YONG	REVISED - R. SHAH 10-25-94
PLOT SCALE = 100,0000' / in.	CHECKED -	REVISED - A. ABBAS 03-21-97
PLOT DATE = 3/5/2021	DATE - 06-13-90	REVISED - M. GOMEZ 04-06-01
		REVISED - R.BORO 01-01-07

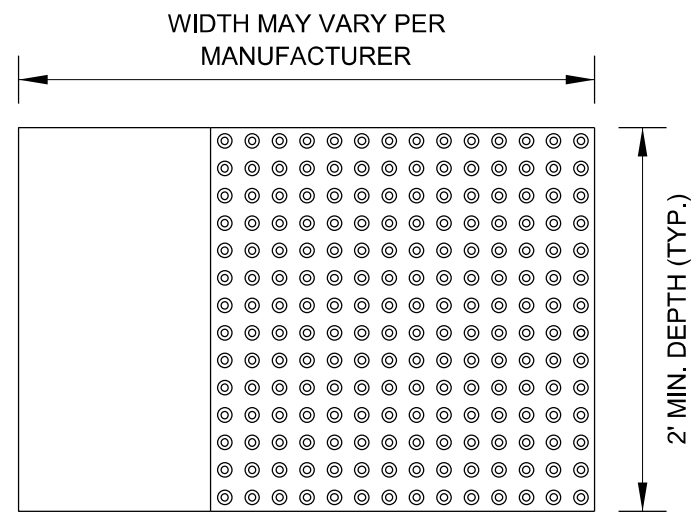
**STATE OF ILLINOIS
DEPARTMENT OF TRANSPORTATION**

**BUTT JOINT AND
HMA TAPER DETAILS**

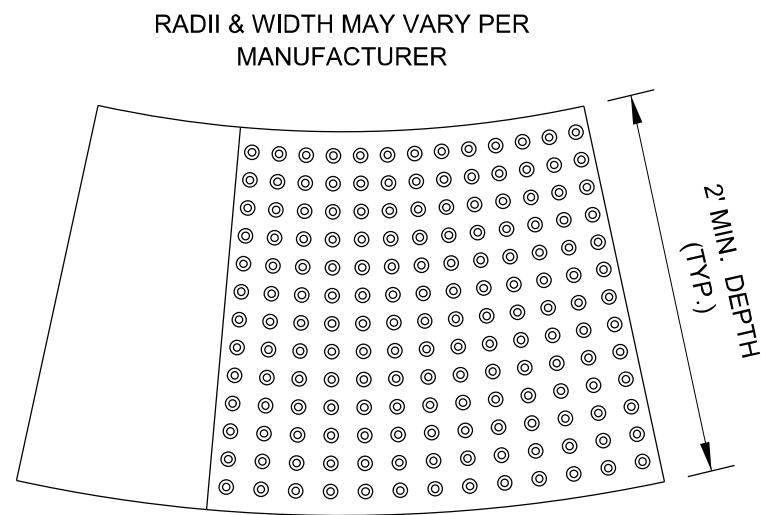
SCALE: NONE SHEET 1 OF 1 SHEETS STA. TO STA.

F.A.P. RTE.	SECTION	COUNTY	TOTAL SHEETS	SHEET NO.
29	2020-048-R5&SW	COOK	24	15
BD400-05 BD32		CONTRACT NO. 62L20		
ILLINOIS FED. AID PROJECT				

STRAIGHT DETECTABLE WARNING UNITS



RADIAL DETECTABLE WARNING UNITS

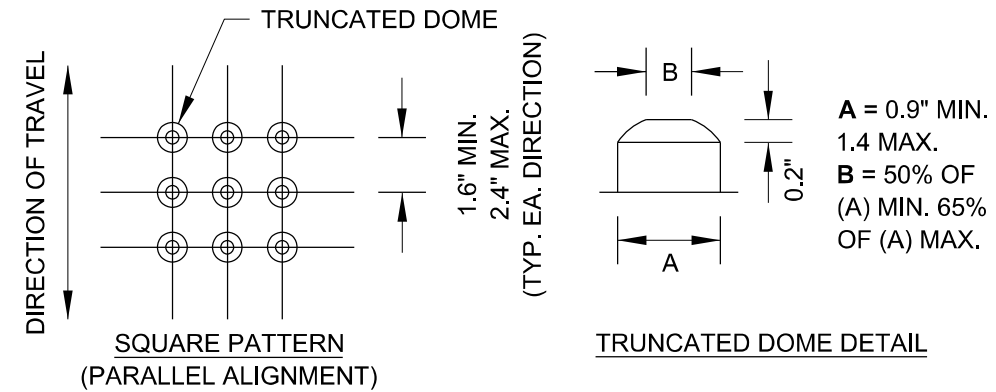


DETECTABLE WARNING UNIT SIZES

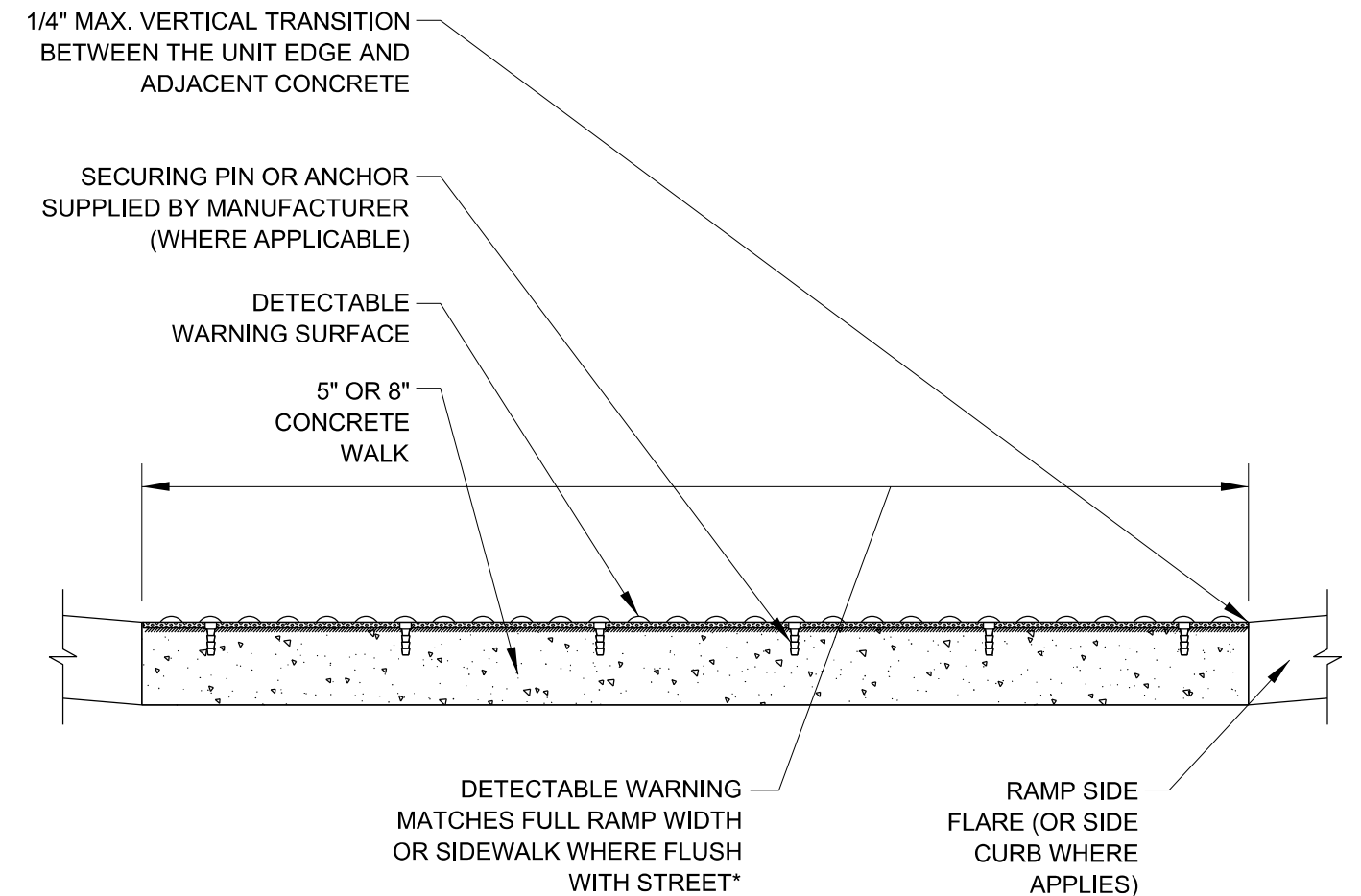
- VERIFY ALL DIMENSIONS WITH THE PRODUCT MANUFACTURER.
- IF USING RADIAL UNITS, VERIFY THAT THE CURB RADIUS MATCHES AVAILABLE UNIT RADII WITH THE PRODUCT MANUFACTURER.

GENERAL NOTE:

THE ROWS OF DOMES IN THE DETECTABLE WARNING MATERIAL MUST BE ALIGNED WITH THE PATH OF WHEELCHAIR TRAVEL WHICH IS REQUIRED TO BE PERPENDICULAR TO THE GRADE BREAK AT THE BOTTOM OF THE RAMP TO PERMIT TRACKING BETWEEN DOME ROWS. ON BLENDED TRANSITIONS OR FLUSH TRANSITIONS, WHERE RADIAL UNITS ARE SITUATED ABOUT THE CURB RADIUS, DOME ORIENTATION IS NOT SIGNIFICANT.



UNIT PATTERN & DOME DETAIL



*A BORDER OF 2 INCHES OR LESS AROUND THE DETECTABLE WARNING SURFACE IS ACCEPTABLE IF REQUIRED FOR PROPER INSTALLATION OF THE DETECTABLE WARNING SURFACE PRODUCT

DETECTABLE WARNING UNIT SECTION

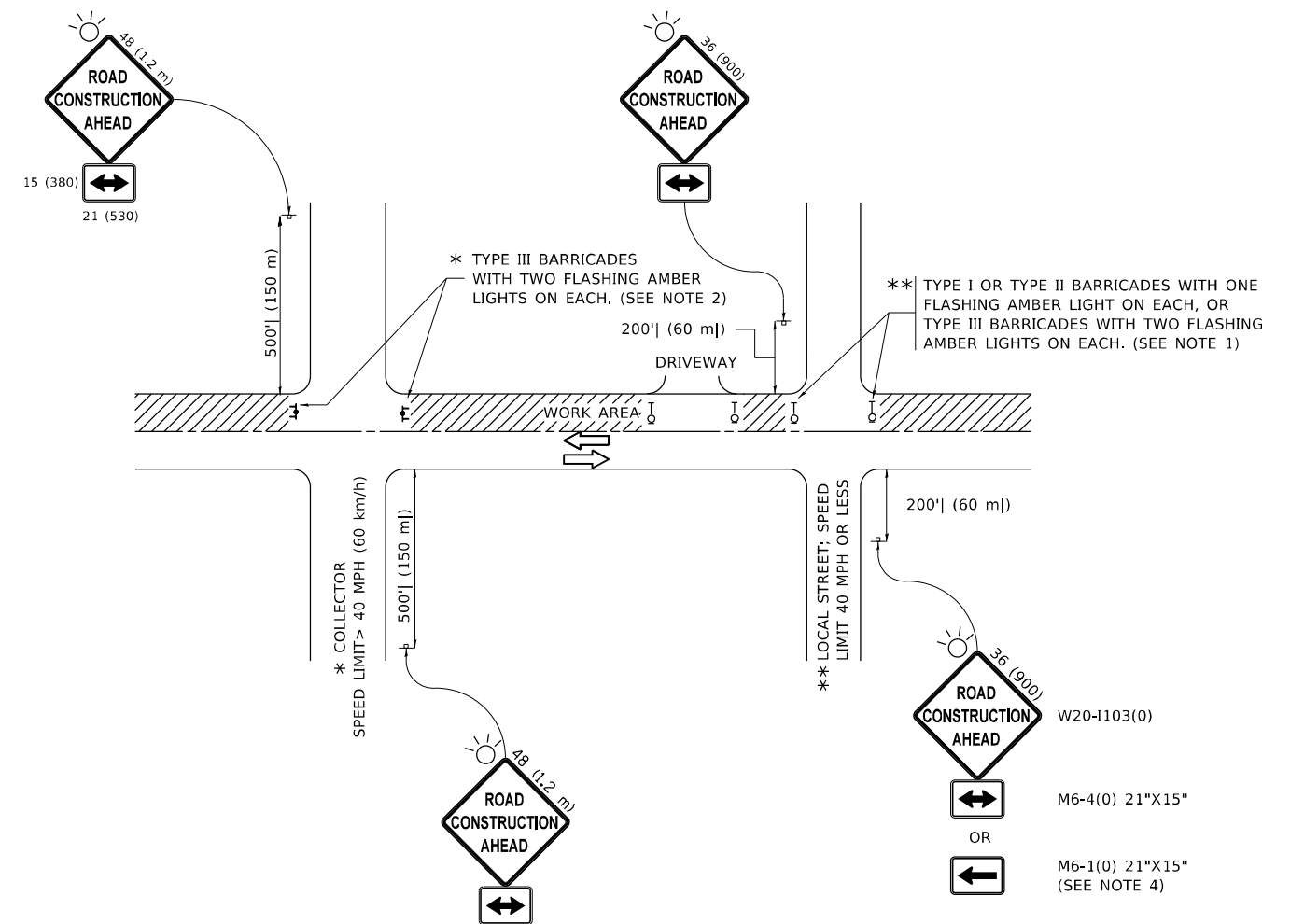
MODEL: Default
 FILE NAME: p:\pub\amr\room.dwg
 PROJECT: 2020-048-R5&SW
 PROJECT DATE: 3/5/2021
 USER: bllgramisa

USER NAME = bllgramisa	DESIGNED -	REVISED -
	DRAWN -	REVISED -
PLOT SCALE = 100,0000' / in.	CHECKED -	REVISED -
PLOT DATE = 3/5/2021	DATE - 06-20-2017	REVISED -

STATE OF ILLINOIS
DEPARTMENT OF TRANSPORTATION

CITY OF CHICAGO DETECTABLE WARNINGS			
SCALE: NONE	SHEET 1	OF 1 SHEETS	STA. TO STA.

F.A.P. RTE.	SECTION	COUNTY	TOTAL SHEETS	SHEET NO.
29	2020-048-R5&SW	COOK	24	17
BD 58		CONTRACT NO. 62L20		
ILLINOIS FED. AID PROJECT				



NOTES:

1. SIDE ROAD WITH A SPEED LIMIT OF 40 MPH (60 km/h) OR LESS AS SHOWN ON THE DRAWING AND AS DIRECTED BY THE ENGINEER:
 - a) ONE "ROAD CONSTRUCTION AHEAD" SIGN 36 x 36 (900x900) WITH A FLASHER MOUNTED ON IT APPROXIMATELY 200' (60 m) IN ADVANCE OF THE MAIN ROUTE.
 - b) THE CLOSED PORTION OF THE MAIN ROUTE SHALL BE PROTECTED BY BLOCKING WITH TYPE I, TYPE II OR TYPE III BARRICADES, 1/3 OF THE CROSS SECTION OF THE CLOSED PORTION.
2. SIDE ROAD WITH A SPEED LIMIT GREATER THAN 40 MPH (60 km/h) AS SHOWN ON THE DRAWING AND AS DIRECTED BY THE ENGINEER:
 - a) ONE "ROAD CONSTRUCTION AHEAD" SIGN 48 x 48 (1.2 m x 1.2 m) WITH A FLASHER MOUNTED ON IT APPROXIMATELY 500' (150 m) IN ADVANCE OF THE MAIN ROUTE.
 - b) THE CLOSED PORTION OF THE MAIN ROUTE SHALL BE PROTECTED BY BLOCKING WITH TYPE III BARRICADES, 1/2 OF THE CROSS SECTION OF THE CLOSED PORTION.
3. CONES MAY BE SUBSTITUTED FOR BARRICADES OR DRUMS AT HALF THE SPACING DURING DAY OPERATIONS. CONES SHALL BE A MINIMUM OF 28 (710) IN HEIGHT.
4. SIGNING AND THE WORK ZONE, A SINGLE HEADED ARROW (M6-1) SHALL BE USED IN LIEU OF THE DOUBLE HEADED ARROW (M6-4).
5. WHEN WORK IS BEING PERFORMED ON A SIDE ROAD OR DRIVEWAY, FOLLOW THE APPLICABLE STANDARD(S). THE DIRECTIONAL ARROW (M6-1 OR M6-4) SHALL BE COVERED OR REMOVED WHEN NO LONGER CONSISTENT WITH THE TRAFFIC CONTROL SET-UP.
6. ADVANCE WARNING SIGNS ARE TO BE OMITTED ON DRIVEWAYS UNLESS OTHERWISE SPECIFIED IN THE PLANS OR BY THE ENGINEER.
7. THE TRAFFIC CONTROL AND PROTECTION FOR SIDE ROADS, INTERSECTIONS, AND DRIVEWAYS SHALL BE INCLUDED IN THE COST OF SPECIFIED TRAFFIC CONTROL STANDARDS OR ITEMS.

All dimensions are in inches (millimeters) unless otherwise shown.

MODEL: Default
 FILE NAME: p:\m\m\room\dot\illinois\gov\p\w\dot\Documents\DOT_Offices\Distrefc_1\Project\ID143120\CADD\Data\Design\Dis54.dgn

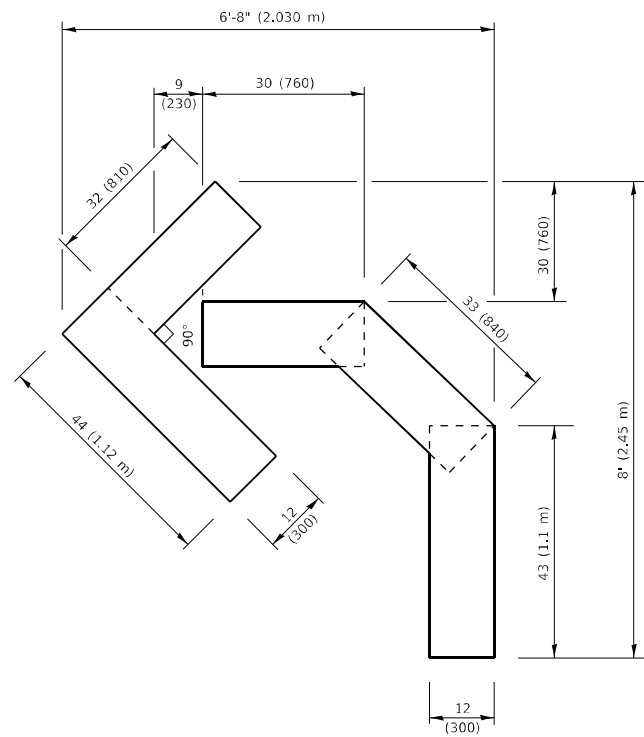
USER NAME = Bilgramisa	DESIGNED - L.H.A.	REVISED - A. HOUSEH 10-15-96
PLOT SCALE = 100,0000' / in.	CHECKED -	REVISED - T. RAMMACHER 01-06-00
PLOT DATE = 3/5/2021	DATE - 06-89	REVISED - A. SCHUETZE 07-01-13
		REVISED - A. SCHUETZE 09-15-16

**STATE OF ILLINOIS
DEPARTMENT OF TRANSPORTATION**

**TRAFFIC CONTROL AND PROTECTION FOR
SIDE ROADS, INTERSECTIONS, AND DRIVEWAYS**

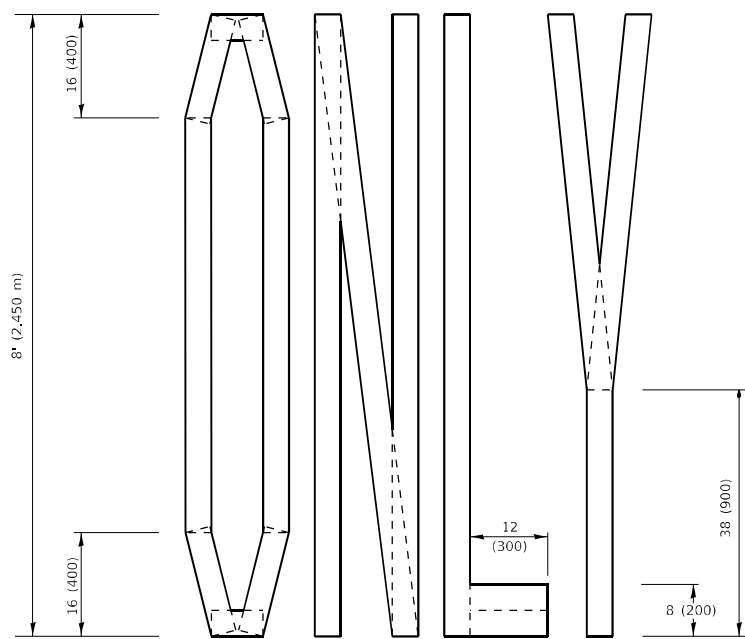
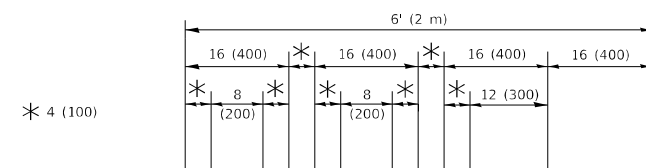
SCALE: NONE SHEET 1 OF 1 SHEETS STA. TO STA.

F.A.P. RTE.	SECTION	COUNTY	TOTAL SHEETS	SHEET NO.
29	2020-048-R5&SW	COOK	24	18
TC-10			CONTRACT NO. 62L20	
ILLINOIS FED. AID PROJECT				



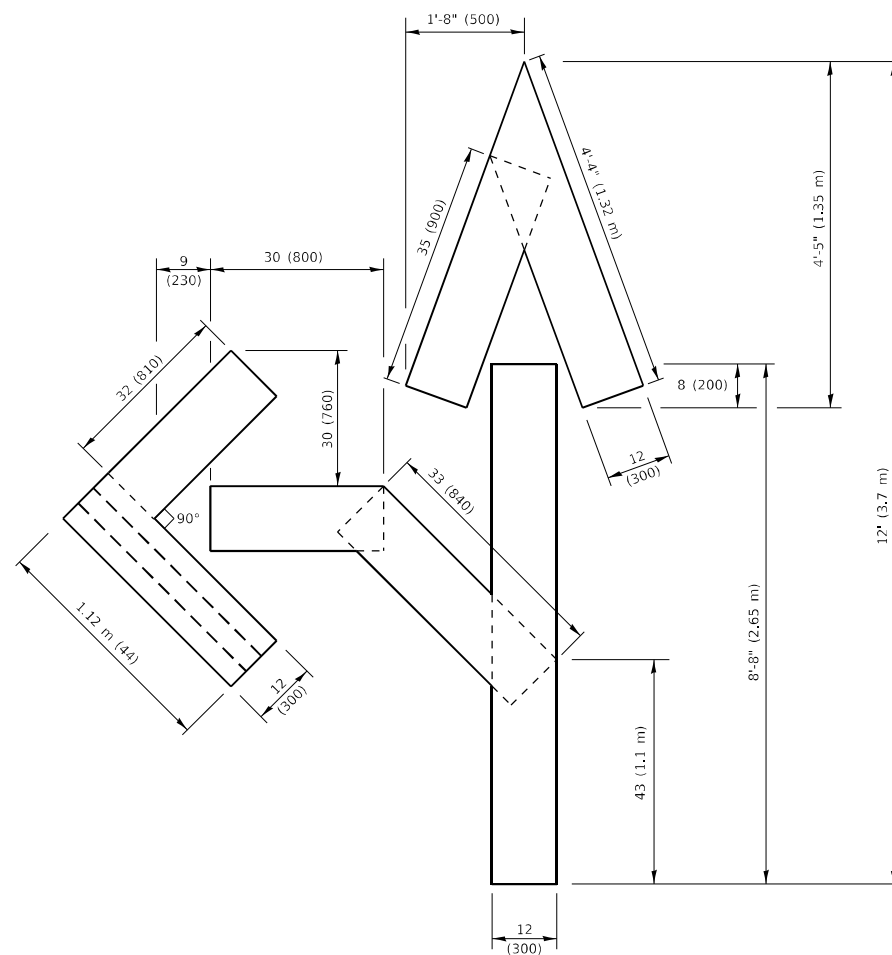
QUANTITY

4 (100) LINE = 45.5 ft. (13.9 m)
15.2 sq. ft. (1.41 sq. m)



QUANTITY

4 (100) LINE = 64.1 ft. (19.5 m)
21.4 sq. ft. (1.99 sq. m)

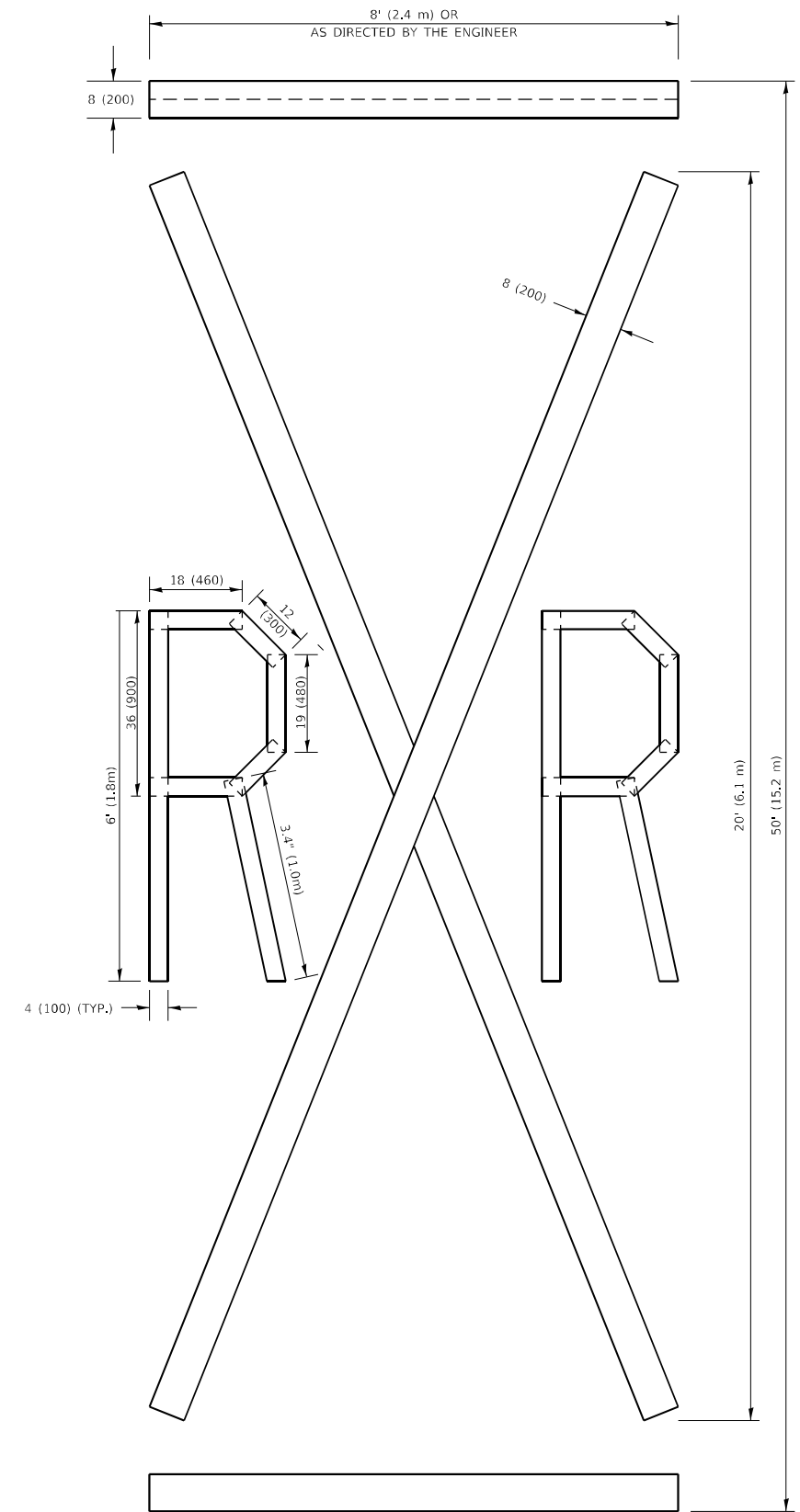


QUANTITY

4 (100) LINE = 82.5 ft. (25.1 m)
27.5 sq. ft. (2.53 sq. m)

NOTE:

ALL QUANTITIES OF PLACEMENT ARE REPRESENTED IN LINEAR FEET OF 4" LINES TO MATCH THE 4" TEMPORARY TAPE PAY ITEM AND REPRESENTS THE TOTAL QUANTITY OF 4" TAPE REQUIRED.



QUANTITY

4 (100) LINE = 225.9 ft. (68.9 m)
75.3 sq. ft. (6.99 sq. m)

All dimensions are in inches (millimeters) unless otherwise shown.

MODEL: Default
FILE NAME: P:\pub\barcom_dot_illinois\pav\DOT\Documents\DOT_Offices\District 1\Projects\CD143120\CD00\Draws\Design\DRS54.dwg

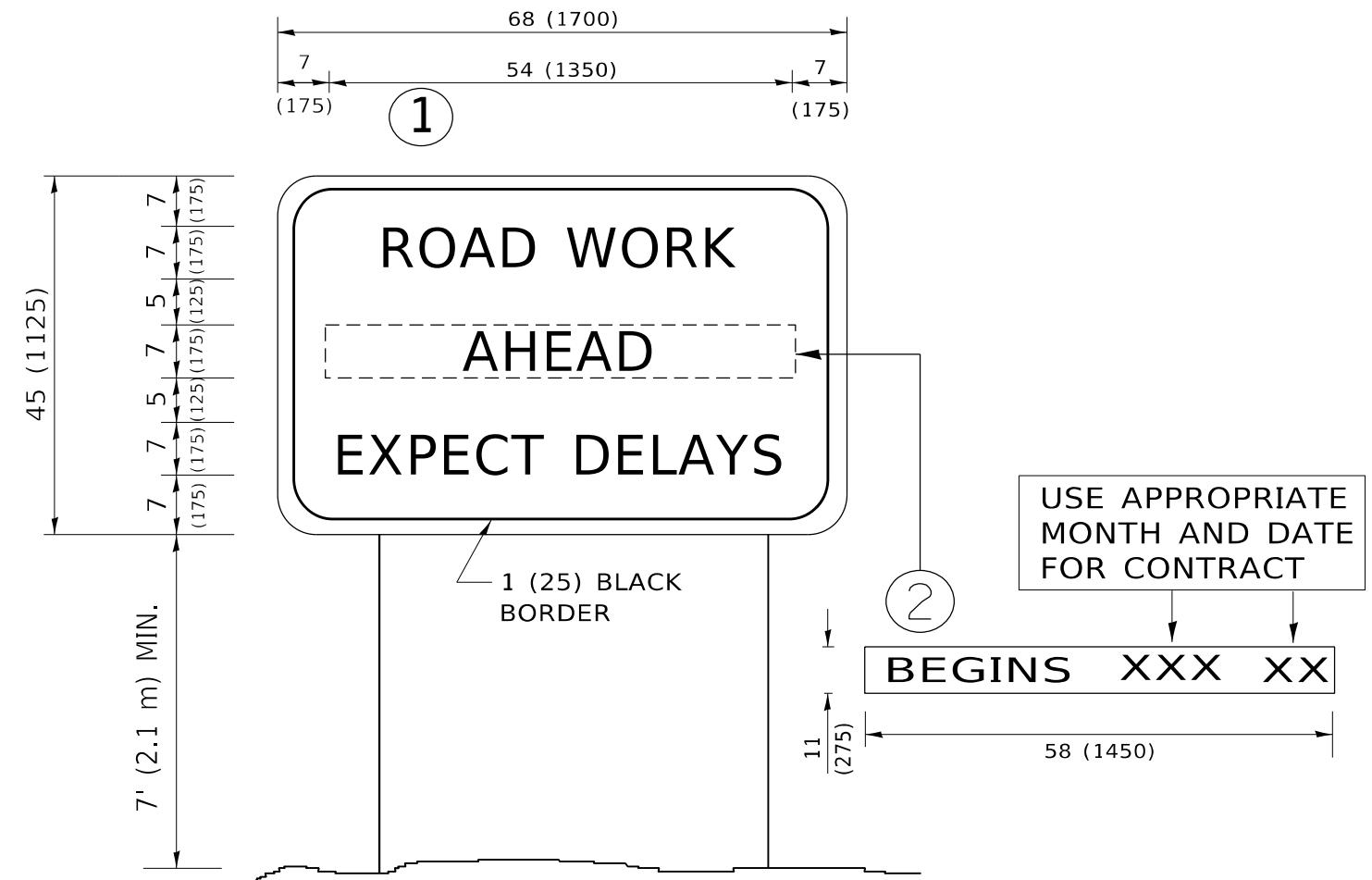
USER NAME = Bilgramisa	DESIGNED -	REVISED - T. RAMMACHER 03-02-98
PLOT SCALE = 100,0010 ' / in.	DRAWN -	REVISED - E. GOMEZ 08-28-00
PLOT DATE = 3/5/2021	CHECKED -	REVISED - E. GOMEZ 08-28-00
	DATE - 09-18-94	REVISED - A. SCHUETZE 09-15-16

**STATE OF ILLINOIS
DEPARTMENT OF TRANSPORTATION**

SHORT TERM PAVEMENT MARKING LETTERS AND SYMBOLS

SCALE: NONE SHEET 1 OF 1 SHEETS STA. TO STA.

F.A.P. RTE.	SECTION	COUNTY	TOTAL SHEETS	SHEET NO.
29	2020-048-R5&SW	COOK	24	20
TC-16		CONTRACT NO. 62L20		
ILLINOIS FED. AID PROJECT				



NOTES:

1. USE BLACK LETTERING ON ORANGE BACKGROUND.
2. ERECT SIGNS IN ADVANCE OF THE LOCATION FOR THE "ROAD CONSTRUCTION AHEAD" SIGN AT LOCATIONS AS DIRECTED BY THE ENGINEER.
3. ERECT SIGN ① WITH INSTALLED PANEL ② ONE WEEK PRIOR TO THE START OF CONSTRUCTION.
4. REMOVE PANEL ② SOON AFTER THE START OF CONSTRUCTION.
5. SEE SPECIAL PROVISION FOR "TEMPORARY INFORMATION SIGNING" FOR ADDITIONAL INFORMATION.
6. ONE SIGN ASSEMBLY EQUALS 25.70 SQ. FT. (2.3 SQ. M.)
7. SHALL BE PAID FOR AS TEMPORARY INFORMATION SIGNING.

ALL DIMENSIONS ARE IN INCHES (MILLIMETERS) UNLESS OTHERWISE SHOWN.

MODEL: Default
 FILE NAME: p:\pub\mroom.dwg
 PROJECT: I:\Projects\143120\CADDData\Design\DS5.dgn

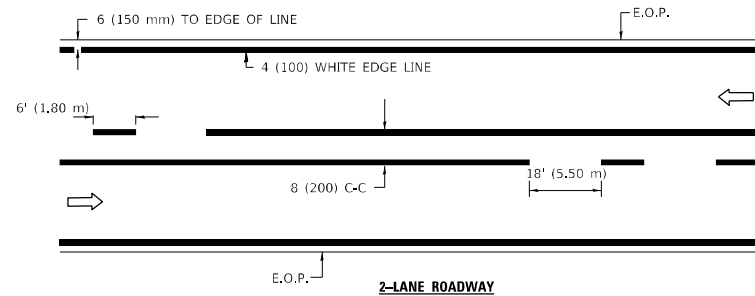
USER NAME = Bilgramisa	DESIGNED -	REVISED - R. MIRS 09-15-97
	DRAWN -	REVISED - R. MIRS 12-11-97
PLOT SCALE = 100,0000 ' / in.	CHECKED -	REVISED - T. RAMMACHER 02-02-99
PLOT DATE = 3/5/2021	DATE -	REVISED - C. JUCIUS 01-31-07

**STATE OF ILLINOIS
DEPARTMENT OF TRANSPORTATION**

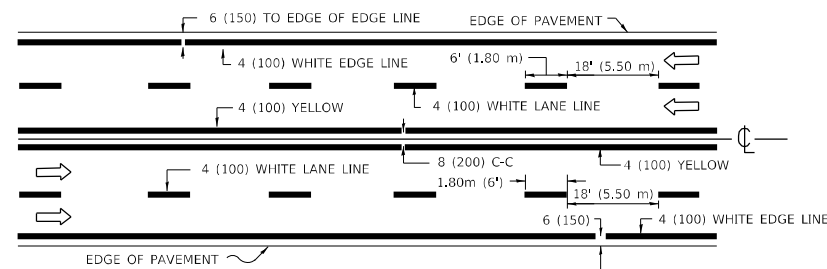
**ARTERIAL ROAD
INFORMATION SIGN**

SCALE: NONE SHEET 1 OF 1 SHEETS STA. TO STA.

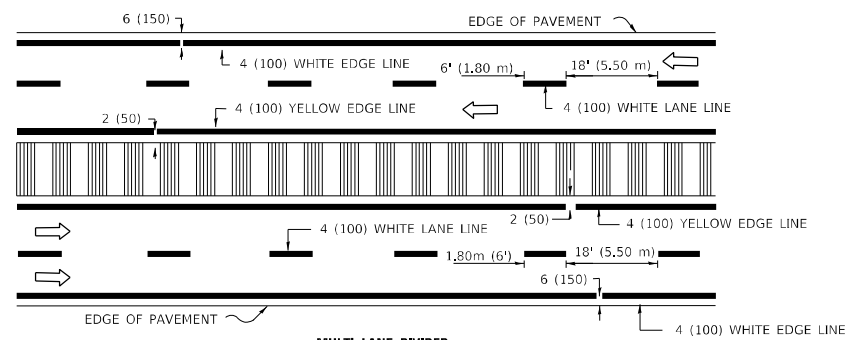
F.A.P. RTE.	SECTION	COUNTY	TOTAL SHEETS	SHEET NO.
29	2020-048-R5&SW	COOK	24	21
TC-22		CONTRACT NO. 62L20		
ILLINOIS FED. AID PROJECT				



2-LANE ROADWAY



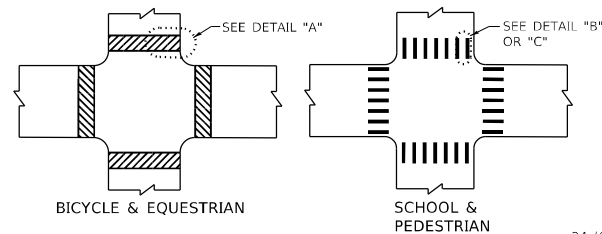
MULTI-LANE UNDIVIDED



MULTI-LANE DIVIDED WITH MOUNTABLE MEDIAN

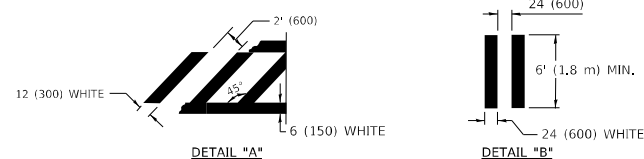
NOTE: MEDIANS WITH BARRIER CURB DO NOT REQUIRE AN EDGE LINE

TYPICAL LANE AND EDGE LINE MARKING

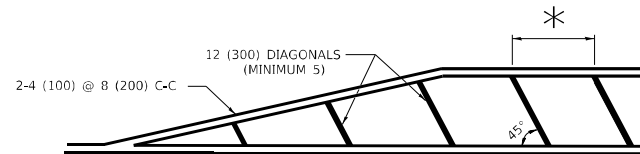


BICYCLE & EQUESTRIAN

SCHOOL & PEDESTRIAN



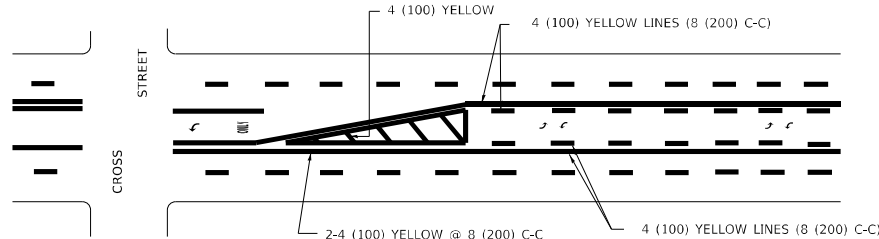
TYPICAL CROSSWALK MARKING



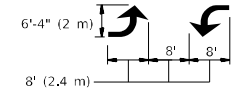
* FOR MEDIAN LENGTHS WHERE DIAGONAL SPACING CANNOT BE ATTAINED, USE 5 (FIVE) EQUALLY SPACED DIAGONAL LINES.

* DIAGONAL LINE SPACING: 20' (6.1 m) C-C

PAINTED MEDIANS

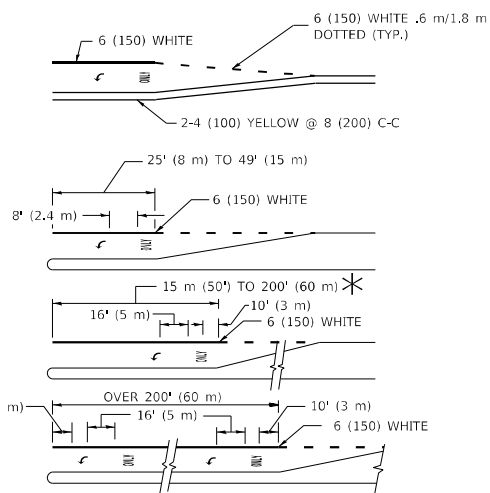


A MINIMUM OF TWO PAIRS OF TURN ARROWS SHALL BE USED, WHITE IN COLOR. ADDITIONAL PAIRS SHALL BE PLACED AT 200' (60 m) TO 300' (90 m) INTERVALS.



MEDIAN WITH TWO-WAY LEFT TURN LANE

TYPICAL PAINTED MEDIAN MARKING

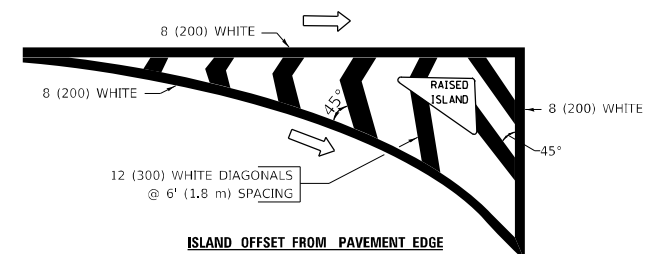


FULL SIZE LETTERS 8" (2.4 m) AND ARROWS SHALL BE USED. AREA = 15.8 SQ. FT. (1.47 m²) ONLY AREA = 22.9 SQ. FT. (2.13 m²)

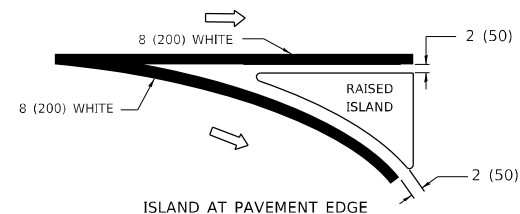
* TURN LANES IN EXCESS OF 400' (120 m) IN LENGTH MAY HAVE AN ADDITIONAL SET OF ARROW - "ONLY" INSTALLED MIDWAY BETWEEN THE OTHER TWO SETS OF ARROW - "ONLY".

TYPICAL LEFT (OR RIGHT) TURN LANE

TYPICAL TURN LANE MARKING



ISLAND OFFSET FROM PAVEMENT EDGE



ISLAND AT PAVEMENT EDGE

TYPICAL ISLAND MARKING

TYPE OF MARKING	WIDTH OF LINE	PATTERN	COLOR	SPACING / REMARKS
CENTERLINE ON 2 LANE PAVEMENT	4 (100)	SKIP-DASH	YELLOW	6' (1.80 m) LINE WITH 18' (5.50 m) SPACE
CENTERLINE ON MULTI-LANE UNDIVIDED PAVEMENT	2 @ 4 (100)	SOLID	YELLOW	8 (200) C-C
NO PASSING ZONE LINES: FOR ONE DIRECTION FOR BOTH DIRECTIONS	4 (100) 2 @ 4 (100)	SOLID SOLID	YELLOW YELLOW	8 (200) C-C
LANE LINES	4 (100) 5 (125) ON FREEWAYS	SKIP-DASH SKIP-DASH	WHITE WHITE	6' (1.80 m) LINE WITH 18' (5.50 m) SPACE
DOTTED LINES (EXTENSIONS OF CENTER, LANE OR TURN LANE MARKINGS)	SAME AS LINE BEING EXTENDED	SKIP-DASH	SAME AS LINE BEING EXTENDED	2' (600) LINE WITH 6' (1.8) SPACE
EDGE LINES	4 (100)	SOLID	YELLOW-LEFT WHITE-RIGHT	OUTLINE MOUNTABLE MEDIANS IN YELLOW; EDGE LINES ARE NOT USED NEXT TO BARRIER CURB
TURN LANE MARKINGS	6 (150) LINE: FULL SIZE LETTERS & SYMBOLS (8' (2.4 m))	SOLID	WHITE	SEE TYPICAL TURN LANE MARKING DETAIL
TWO WAY LEFT TURN MARKING	2 @ 4 (100) EACH DIRECTION 8' (2.4 m) LEFT ARROW	SKIP-DASH AND SOLID IN PAIRS	YELLOW WHITE	6' (1.8 m) LINE WITH 18' (5.50 m) SPACE FOR SKIP-DASH; 8 (200) C-C BETWEEN SOLID LINE AND SKIP-DASH LINE SEE TYPICAL TWO-WAY LEFT TURN MARKING DETAIL
CROSSWALK LINES A. DIAGONALS (BIKE & EQUESTRIAN) B. LONGITUDINAL BARS (SCHOOL & PEDESTRIAN)	12 (300) @ 45° 24 (600) @ 90°	SOLID SOLID	WHITE WHITE	2' (600) APART 2' (600) APART SEE TYPICAL CROSSWALK MARKING DETAILS.
STOP LINES	24 (600)	SOLID	WHITE	PLACE 4' (1.2 m) IN ADVANCE OF AND PARALLEL TO CROSSWALK. IF PRESENT, OTHERWISE, PLACE AT DESIRED STOPPING POINT. PARALLEL TO CROSSROAD CENTERLINE, WHERE POSSIBLE
PAINTED MEDIANS	2 @ 4 (100) WITH 12 (300) DIAGONALS @ 45°	SOLID	YELLOW: TWO WAY TRAFFIC WHITE: ONE WAY TRAFFIC	8 (200) C-C FOR THE DOUBLE LINE SEE TYPICAL PAINTED MEDIAN MARKING.
GORE MARKING AND CHANNELIZING LINES	8 (200) WITH 12 (300) DIAGONALS @ 45°	SOLID	WHITE	DIAGONALS: 20' (6.1 m) (LESS THAN 30 MPH (50 km/h))
RAILROAD CROSSING	24 (600) TRANSVERSE LINES; "RR" IS 6' (1.8 m) LETTERS; 16 (400) LINE FOR "X"	SOLID	WHITE	SEE STATE STANDARD 780001 AREA OF: "R"=3.6 SQ. FT. (0.33m ²) EACH "X"=54.0 SQ. FT. (5.0 m ²)

FOR FURTHER DETAILS ON PAVEMENT MARKING REFER TO STREET MARKING STANDARDS, PRINTED BY CITY OF CHICAGO, DEPARTMENT OF TRANSPORTATION, BUREAU OF TRAFFIC.

ALL DIMENSIONS ARE IN INCHES (MILLIMETERS) UNLESS OTHERWISE SHOWN.

MODEL: Default
FILE NAME: public\amr\room\dot\illinois\dot\Documents\DOT Office\Drawings\1\Project\143120\CADD\Drawings\Design\DES-564.dwg

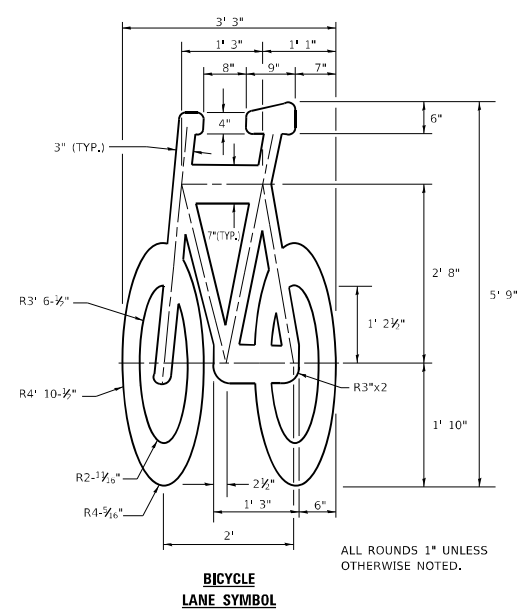
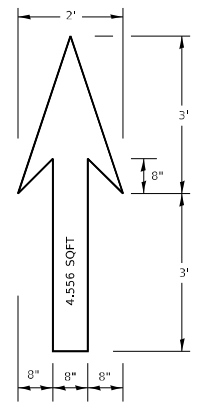
USER NAME = bilgramisa	DESIGNED -	REVISED - T. RAMMACHER 12-07-00
PLOT SCALE = 100,0000' / in.	DRAWN -	REVISED - K. ENG 02-28-12
PLOT DATE = 3/5/2021	CHECKED -	REVISED -
	DATE -	REVISED -

STATE OF ILLINOIS
DEPARTMENT OF TRANSPORTATION

CITY OF CHICAGO
TYPICAL PAVEMENT MARKINGS

SCALE: NONE SHEET 1 OF 3 SHEETS STA. TO STA.

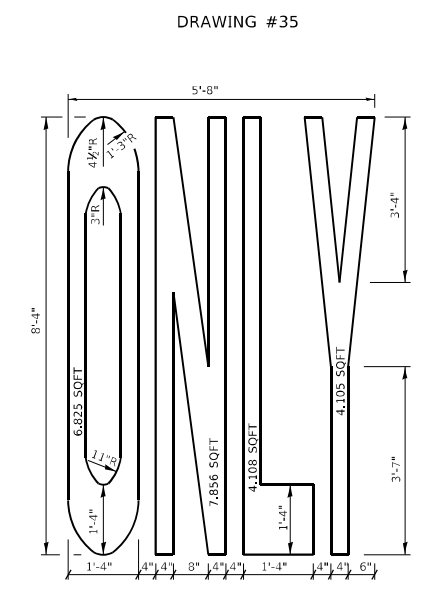
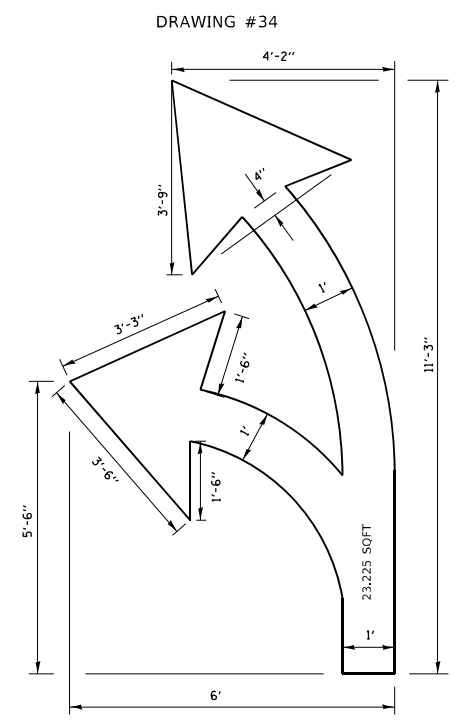
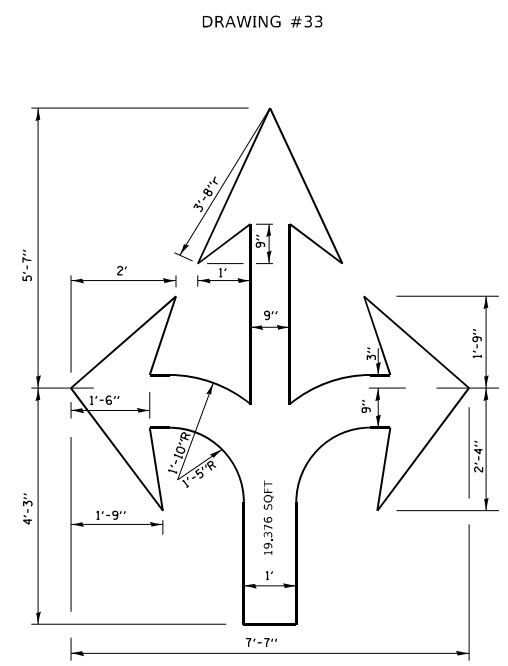
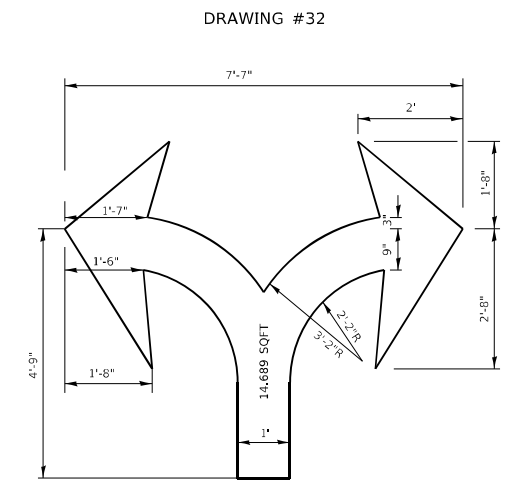
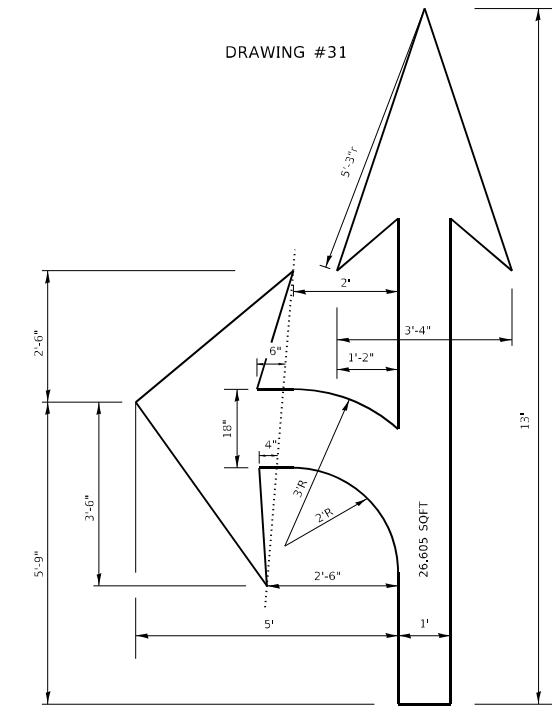
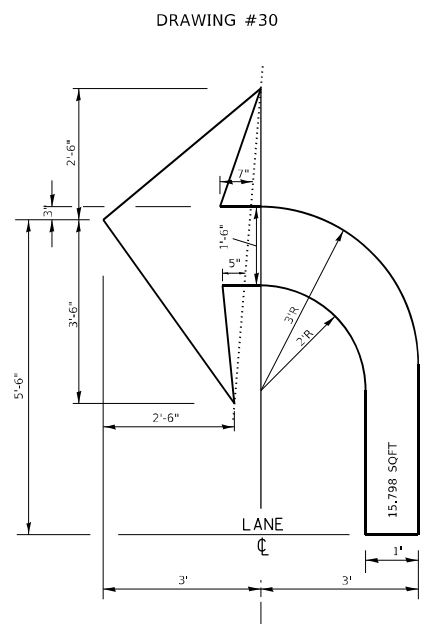
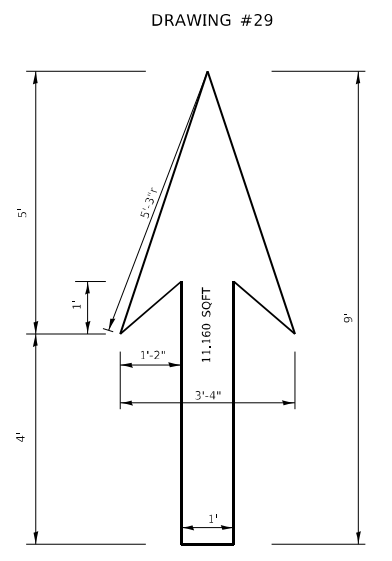
F.A.P. RTE.	SECTION	COUNTY	TOTAL SHEETS	SHEET NO.
29	2020-048-R5&SW	COOK	24	22
TC-24		CONTRACT NO. 62L20		
ILLINOIS		FED. AID PROJECT		



**BICYCLE
LANE SYMBOL**

- NOTE:**
1. FOR BIKE LANE SYMBOLS ONLY, USE PRE-FORMED THERMOPLASTIC WITH A MINIMUM THICKNESS OF 90 MILS, MINIMUM SKID RESISTANCE VALUE OF 60 BPN, & A MINIMUM INDEX OF REFRACTION OF 1.50.
 2. THE RESIDENT ENGINEER SHALL CONTACT MR. BEN GOMBERG AT 312-744-8093 AT LEAST ONE CALENDAR WEEK PRIOR TO INSTALLING BIKE LANE SYMBOLS.

**TYPICAL BIKE LANE SYMBOLS
DRAWING #28**



NOTE:
ALL MARKINGS SHALL BE SOLID WHITE UNLESS OTHERWISE NOTED IN THE PLANS

MODEL: Default
 FILE NAME: p:\planningroom\dot\illinois\dot\Documents\DOT_Office\Drawings\1\Projects\143120\CaddData\Design\DS54.dgn

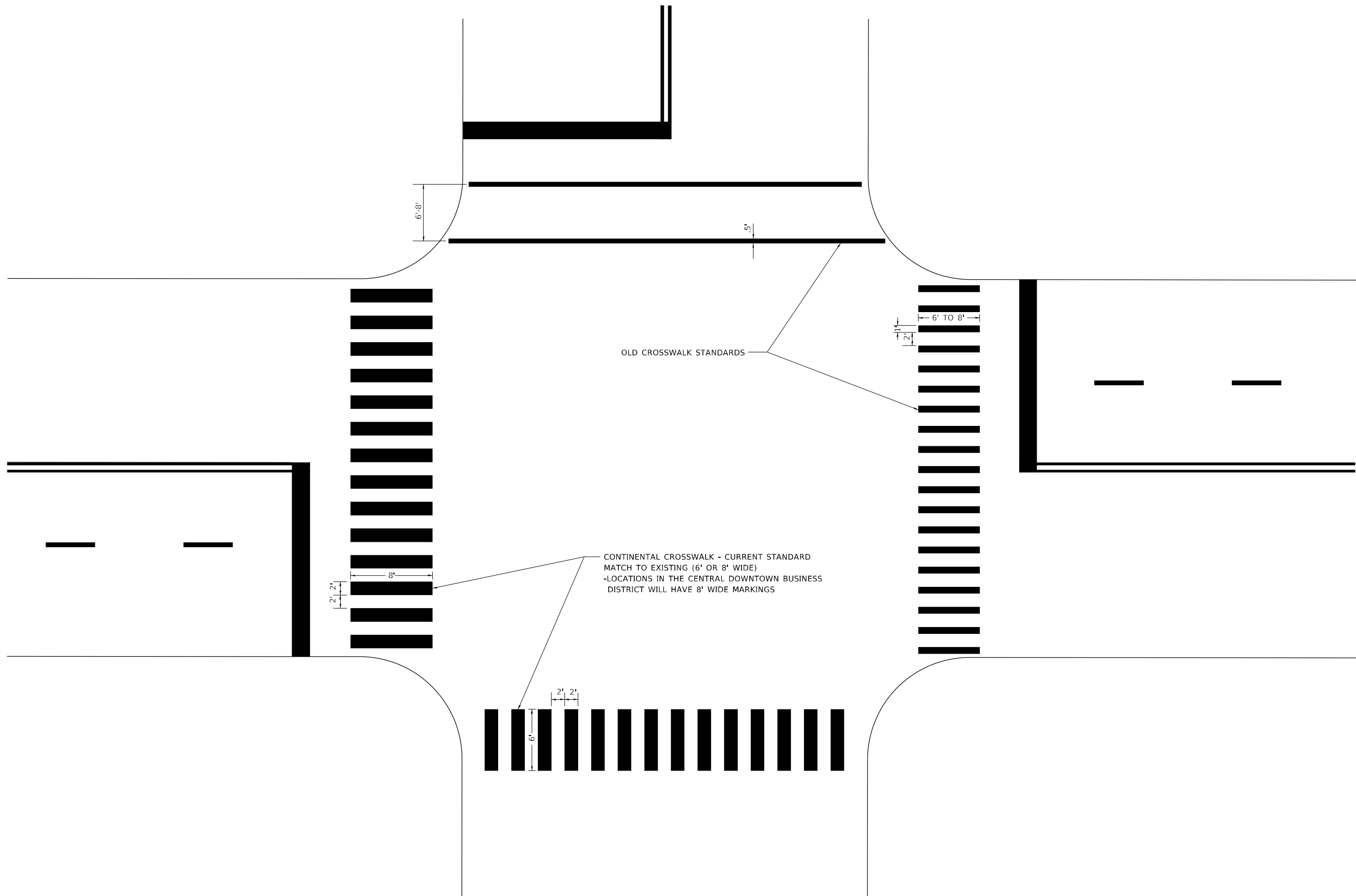
USER NAME = bilgramisa	DESIGNED -	REVISED - T. RAMMACHER 12-07-00
PLOT SCALE = 100,0000' / in.	DRAWN -	REVISED -
PLOT DATE = 3/5/2021	CHECKED -	REVISED -
	DATE -	REVISED -

**STATE OF ILLINOIS
DEPARTMENT OF TRANSPORTATION**

CITY OF CHICAGO TYPICAL PAVEMENT MARKINGS			
SCALE: NONE	SHEET 2	OF 3 SHEETS	STA. TO STA.

F.A.P. RTE. 29	SECTION 2020-048-R5&SW	COUNTY COOK	TOTAL SHEETS 24	SHEET NO. 23
TC-24		CONTRACT NO. 62L20		
		ILLINOIS	FED. AID PROJECT	

MODEL: Default
 FILE NAME: p:\u0000\m0000\dot\illinois.gov\PWIDOT\Documents\DOT_Offices\District 1\Projects\143120\CADD\Drawings\Design\Dis55.dgn



USER NAME = Bilgramisa	DESIGNED -	REVISED - T. RAMMACHER 12-07-00
	DRAWN -	REVISED -
PLOT SCALE = 100,0000' / in.	CHECKED -	REVISED -
PLOT DATE = 3/5/2021	DATE -	REVISED -

**STATE OF ILLINOIS
 DEPARTMENT OF TRANSPORTATION**

**CITY OF CHICAGO
 TYPICAL PAVEMENT MARKINGS**

SCALE: NONE SHEET 3 OF 3 SHEETS STA. TO STA.

F.A.P. RTE.	SECTION	COUNTY	TOTAL SHEETS	SHEET NO.
29	2020-048-R5&SW	COOK	24	24
TC-24			CONTRACT NO. 62L20	
ILLINOIS FED. AID PROJECT				