

STATE OF ILLINOIS
DEPARTMENT OF TRANSPORTATION

F.A.U. RTE	SECTION	COUNTY	TOTAL SHEETS	SHEET NO.
3727	2020-049-RS&SW	COOK	27	1
		ILLINOIS	CONTRACT NO. 62L21	

FOR INDEX OF SHEETS, SEE SHEET NO. 2

PROJECT IS LOCATED IN THE CITY OF EVANSTON

TRAFFIC DATA:
ADT: 525 (2018)
POSTED SPEED LIMIT: 25 MPH

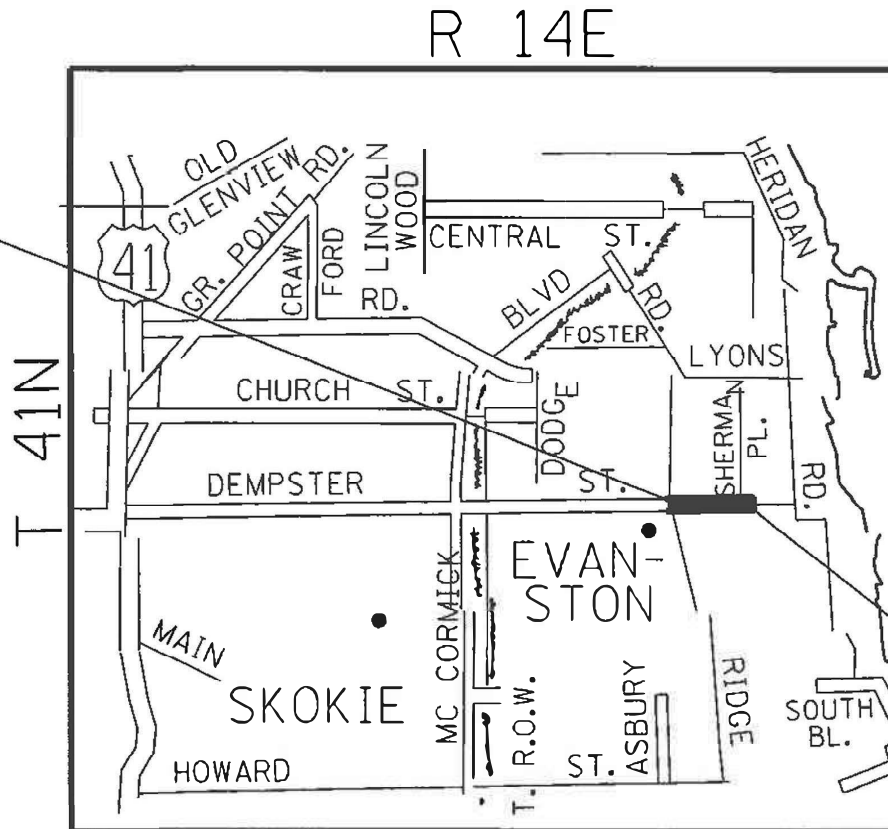
PROPOSED HIGHWAY PLANS

F.A.U. ROUTE 3727: DEMPSTER ST.
RIDGE AVE. TO CHICAGO AVE.
SECTION: 2020-049-RS&SW
PROJECT: STP-K3FT(553)
STANDARD OVERLAY, ADA IMPROVEMENTS
COOK COUNTY
C-91-239-20

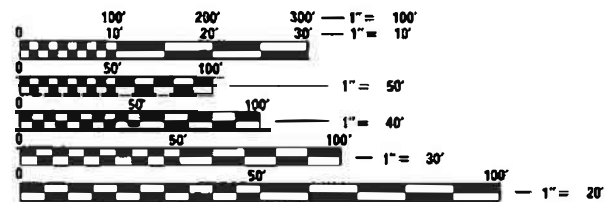
D-91-432-20



BEGIN PROJECT:
STA. 19+26.82



PROJECT ENDS:
STA. 39+88.20



FULL SIZE PLANS HAVE BEEN PREPARED USING STANDARD ENGINEERING SCALES. REDUCED SIZED PLANS WILL NOT CONFORM TO STANDARD SCALES. IN MAKING MEASUREMENTS ON REDUCED PLANS, THE ABOVE SCALES MAY BE USED.

J.U.L.I.E.
JOINT UTILITY LOCATION INFORMATION FOR EXCAVATION
1-800-892-0123
OR 811

PROJECT ENGINEER: DANIEL WILGREEN (847)-705-4240
PROJECT MANAGER: FAWAD AQUEEL (847)-705-4247

CONTRACT NO. 62L21

GROSS LENGTH = 2061.4 FT. = 0.39 MILE
NET LENGTH = 2061.4 FT. = 0.39 MILE

STATE OF ILLINOIS
DEPARTMENT OF TRANSPORTATION

SUBMITTED FEBRUARY 3, 2021
Qasim Piro / CAB REGIONAL ENGINEER
May 7, 2021
[Signature]
ENGINEER OF DESIGN AND ENVIRONMENT
May 7, 2021
[Signature]
DIRECTOR OF HIGHWAYS PROJECT IMPLEMENTATION

PRINTED BY THE AUTHORITY
OF THE STATE OF ILLINOIS

INDEX OF SHEETS

SHEET NO.	DESCRIPTION
1	COVER SHEET
2	INDEX OF SHEETS, LIST OF STATE STANDARDS AND GENERAL NOTES
3-5	SUMMARY OF QUANTITIES
6-10	TYPICAL SECTIONS
11-12	PLAN AND PROFILE SHEETS
13-16	SIDEWALK AND RAMP DETAILS
17	ADA RAMPS [PROJECT DETAIL FOR DOUBLE PERPENDICULAR CURB RAMPS (PD-03)]
18	DETAILS FOR FRAMES AND LIDS ADJUSTMENT WITH MILLING (BD-8)
19	PAVEMENT PATCHING FOR HMA SURFACE PAVEMENT (BD-22)
20	CURB OR CURB AND GUTTER REMOVAL AND REPLACEMENT (BD-24)
21	BUTT JOINT AND HMA TAPER DETAILS (BD-32)
22	TRAFFIC CONTROL AND PROTECTION FOR SIDE ROADS, INTERSECTIONS, AND DRIVEWAYS (TC-10)
23	TYPICAL APPLICATIONS RAISED REFLECTIVE PAVEMENT MARKERS (SNOW-PLOW RESISTANT) (TC-11)
24	DISTRICT ONE TYPICAL PAVEMENT MARKINGS (TC-13)
25	TRAFFIC CONTROL AND PROTECTION AT TURN BAYS (TO REMAIN OPEN TO TRAFFIC) (TC-14)
26	SHORT TERM PAVEMENT MARKING LETTER AND SYMBOLS (TC-16)
27	ARTERIAL ROAD INFORMATION SIGN (TC-22)

STATE STANDARDS

STANDARD NO.	DESCRIPTION
000001-08	STANDARD SYMBOLS, ABBREVIATIONS AND PATTERNS
424001-11	PERPENDICULAR CURB RAMPS
442201-03	CLASS C & D PATCHES
604001-05	FRAMES AND LIDS TYPE 1
606001-07	COMBINATION CURB AND GUTTER
701006-05	OFF ROAD OPERATIONS, 2L, 2W, 15' TO 24" FROM PAVEMENT EDGE
701011-04	OFF ROAD OPERATIONS, 2L, 2W, DAY ONLY
701101-05	OFF ROAD OPERATIONS, MULTILANE, LESS THAN 15 FT TO EDGE OF PAVEMENT
701301-04	LANE CLOSURE, 2L, 2W, SHORT-TIME OPERATIONS
701311-03	LANE CLOSURE, 2L, 2W, MOVING OPERATIONS - DAY ONLY
701427-05	LANE CLOSURE, MULTILANE, INTERMITTENT OR MOVING OPERATION FOR SPEED <=40 MPH.
701501-06	URBAN LANE CLOSURE, 2L, 2W, UNDIVIDED
701502-09	URBAN LANE CLOSURE, 2L, 2W, WITH BIDIRECTIONAL LEFT TURN LANE
701606-10	URBAN SINGLE LANE CLOSURE, MULTILANE, 2W, WITH MOUNTABLE MEDIAN
701611-01	URBAN HALF ROAD CLOSURE, MULTILANE, 2W, WITH MOUNTABLE MEDIAN
701701-10	URBAN LANE CLOSURE, MULTILANE INTERSECTION
701801-06	SIDEWALK CORNER OR CROSSWALK CLOSURE
701901-08	TRAFFIC CONTROL DEVICES
780001-05	TYPICAL PAVEMENT MARKINGS
781001-04	TYPICAL APPLICATION RAISED REFLECTIVE PAVEMENT MARKERS

GENERAL NOTES

NOTE NO.	DESCRIPTION
1	BEFORE STARTING ANY EXCAVATION, THE CONTRACTOR SHALL CALL "JULIE" (JOINT UTILITY LOCATION INFORMATION FOR EXCAVATION AT 8-1-1 OR (800) 892-0123 FOR FIELD LOCATION OF BURIED ELECTRIC, TELEPHONE, AND GAS FACILITIES (48 HOUR NOTIFICATION IS REQUIRED).
2	THE CONTRACTOR SHALL COORDINATE CONSTRUCTION ACTIVITIES WITH UTILITY COMPANIES ALL MUNICIPALITIES WITHIN THE PROJECT LIMITS
3	IN VARIOUS LOCATIONS THROUGHOUT THE PROJECT, EXISTING ASPHALT OVERLAYS THE EXISTING CONCRETE GUTTER FLAG. REMOVAL OF ASPHALT ON THE GUTTER FLAG SHALL BE INCLUDED IN THE UNIT COST OF HOT-MIX ASPHALT SURFACE REMOVAL, 2.5 INCH.
4	THE CONTRACTOR WILL NOT BE ALLOWED TO SET UP A YARD OR FIELD OFFICE ON STATE PROPERTY WITHOUT WRITTEN PERMISSION FROM THE DEPARTMENT.
5	SAW CUTTING OF PAVEMENTS, SIDEWALK, CURB & GUTTER, ETC. SHALL BE TO FULL DEPTH AND SHALL RESULT IN A CLEAN STRAIGHT EDGE ON THE PORTION REMAINING. ALL SAW CUTTING SHALL BE CONSIDERED INCLUDED IN THE COST OF THE ITEM REMOVED
6	DO NOT SCALE PLANS FOR CONSTRUCTION DIMENSIONS
7	THE CONTRACTOR SHALL USE CARE IN REMOVING OR EXCAVATING NEAR ALL EXISTING ITEMS WHICH WILL REMAIN. ANY DAMAGE DONE TO EXISTING ITEMS BY THE CONTRACTOR SHALL BE REPAIRED AT THE CONTRACTOR'S EXPENSE.
8	WHEN MILLED PAVEMENT IS OPEN TO TRAFFIC, THE MAXIMUM GRADE DIFFERENTIAL, BETWEEN PASSES OF THE MILLING MACHINE SHALL NOT EXCEED 1.5 INCHES WHERE THE SPEED LIMIT IS 40 MPH OR LESS. WITH WRITTEN APPROVAL FROM THE ENGINEER, A MAXIMUM GRAD DIFFERENTIAL OF 3 INCHES MAY BE ALLOWED IF THE EDGE OF MILLING IS SLOPED A MINIMUM OF 1:3 (V:H)
9	UNLESS OTHER CONDITIONS WARRANT EXTENDED LANE CLOSURES AS DETERMINED AND APPROVED IN WRITING BY THE ENGINEER OR AS PROVIDED FOR IN THE CONTRACT SPECIFICATIONS, OVERNIGHT CLOSURES SHALL NOT BE ALLOWED FOR REHABILITATION PROJECTS INVOLVING DAYTIME MILLING AND RESURFACING OPERATIONS AND CLASS D PATCHING.
10	BEFORE BEGINNING ANY WORK, THE CONTRACTOR SHALL RETAIN AND RECORD FOR FUTURE REFERENCE ALL EXISTING PAVEMENT MARKING LINES AND RAISED REFLECTIVE PAVEMENT MARKERS IN ORDER THAT THESE LOCATIONS CAN BE REESTABLISHED FOR STRIPING. EXACT LOCATIONS OF ALL PAVEMENT MARKING SHALL BE AS DIRECTED BY THE ENGINEER.
11	PAVEMENT MARKING TAPE, TYPE III SHALL BE USED FOR SHORT TERM PAVEMENT MARKINGS ON ALL FINAL SURFACES.
12	THE CONTRACTOR SHALL CONTACT THE TRAFFIC CONTROL SUPERVISOR AT KALPANA.KANNAN-HOSADURGA@ILLINOIS.GOV. A MINIMUM OF 72 HOURS PRIOR TO BEGINNING WORK.
13	THE RESIDENT ENGINEER SHALL CONTACT THE AREA TRAFFIC FIELD ENGINEER, MATTHEW THOMAS AT MATTHEW.THOMAS@ILLINOIS.GOV AT LEAST TWO (2) WEEKS PRIOR TO THE PLACEMENT OF PERMANENT PAVEMENT MARKINGS.
14	BUTT JOINTS WILL BE INSTALLED AT THE END OF ALL RESURFACING (WHERE RESURFACING MEETS EXISTING PAVEMENT), IN ACCORDANCE THE "BUTT JOINT AND HMA TAPER DETAILS" INCLUDED IN THE PLANS, UNLESS OTHERWISE SPECIFIED
15	MATCH EXISTING PAVEMENT AT THE PROJECT LIMITS.
16	ALL DAMAGE TO EXISTING PAVEMENT MARKINGS OR RAISED REFLECTIVE MARKERS OUTSIDE THE REMOVAL LINE SHOWN ON THE PLANS SHALL BE REPLACED AT THE CONTRACTORS EXPENSE.
17	THE CONTRACTOR SHALL BE RESPONSIBLE FOR CONTACTING OWNERS OF ALL UTILITIES PRIOR TO CONSTRUCTION TO DETERMINE THE LOCATION OF ALL UTILITY EQUIPMENT. THE CONTRACTOR SHALL COOPERATE WITH ALL UTILITY OWNERS IN ACCORDANCE WITH THE STANDARD SPECIFICATIONS IF UTILITY RELOCATION, ADJUSTMENT, OR PROTECTION IS NECESSARY

GENERAL NOTES (CONTINUED)

NOTE NO.	DESCRIPTION
18	THE LOCATION OF EXISTING DRAINAGE STRUCTURES, STORM SEWERS, WATER MAINS, SANITARY SEWERS, AND ANY OTHER PUBLIC OR PRIVATE UTILITIES AS SHOWN ON THE PLANS IS APPROXIMATE AND THEIR EXACT LOCATION IS TO BE DETERMINED IN THE FIELD BY THE CONTRACTOR.
19	THE CONTRACTOR SHALL BE RESPONSIBLE FOR THE PROTECTION OF ALL UNDERGROUND AND SURFACE UTILITIES EVEN THOUGH THEY MIGHT NOT BE SHOWN ON THE PLANS IS APPROXIMATE AND THEIR EXACT LOCATION IS TO BE DETERMINED IN THE FIELD BY THE CONTRACTOR.
20	ANY LOOSE MATERIAL DEPOSITED IN THE FLOW LINE OF DRAINAGE STRUCTURES, WHICH OBSTRUCTS THE NATURAL FLOW OF WATER SHALL BE REMOVED AT THE CLOSE OF EACH WORKING DAY. PRIOR TO ACCEPTANCE OF THE IMPROVEMENT, ALL DRAINAGE STRUCTURES SHALL BE FREE OF DIRT AND DEBRIS. THIS WILL NOT BE PAID FOR SEPARATELY, BUT SHALL BE CONSIDERED AS INCLUDED IN THE UNIT BID PRICES OF THE CONTRACT.
21	EXISTING BROKEN FRAMES AND LIDS SHALL BE REMOVED AND DISPOSED OF BY THE CONTRACTOR AND SHALL BE REPLACED AS DIRECTED BY THE ENGINEER. REPLACEMENT FRAMES AND LIDS WILL BE PAID FOR ACCORDING TO ARTICLE 109.04 OF THE STANDARD SPECIFICATIONS UNLESS A SEPARATE PAY ITEM HAS BEEN PROVIDED.
22	LOCATION OF COMBINATION CONCRETE CURB AND GUTTER REMOVAL AND REPLACEMENT OR COMBINATION CURB AND GUTTER (THE TYPE SPECIFIED IN THE PLANS), WILL BE DETERMINED IN THE FIELD BY THE ENGINEER
23	ALL PAVEMENT PATCHING LOCATIONS WILL BE DETERMINED IN THE FIELD BY THE ENGINEER
24	IT SHALL BE THE CONTRACTOR'S RESPONSIBILITY TO VERIFY ALL DIMENSIONS AND CONDITIONS EXISTING IN THE FIELD PRIOR TO CONSTRUCTION AND ORDERING OF MATERIALS
25	DRAINAGE ADJUSTMENT OR RECONSTRUCTION LOCATIONS WILL BE DETERMINED IN THE FIELD BY THE ENGINEER.
26	FRAMES AND GRATES ADJUSTMENT OF PRIVATE UTILITIES WITHIN THE LIMITS OF THE IMPROVEMENTS SHALL BE DONE BY THEIR RESPECTIVE OWNERS AND ARE NOT PART OF THIS CONTRACT
27	SIDEWALK REMOVAL AND PCC SIDEWALK 5" LOCATIONS SHALL BE DETERMINED BY THE ENGINEER
28	ALL RAISED REFLECTIVE MAKERS SHALL BE INSTALLED ACCORDING TO IDOT DISTRICT ONE DETAIL TC-11
29	ALL PAVEMENT MARKINGS SHALL BE INSTALLED ACCORDING TO IDOT DISTRICT ONE DETAIL TC-13
30	ALL SIDEWALK RAMP SHALL CONFORM TO CURRENT ADA REQUIREMENTS AND APPLICABLE STATE HIGHWAY STANDARDS OR AS DETERMINED BY THE ENGINEER
31	CONTRACTORS SHALL EXERCISE CAUTION WHEN MILLING AND RESURFACING UNDER THE VIADUCT DUE TO THE LOW STANDARD VERTICAL CLEARANCE.

SUMMARY OF QUANTITIES			TOTAL QUANTITIES URBAN	CONSTRUCTION TYPE CODE				
CODE NO	ITEM	UNIT		0005 80% FEDERAL 20% STATE	0005 100% STATE			
20200100	EARTH EXCAVATION	CU YD	35	35				
21101615	TOPSOIL FURNISH AND PLACE, 4"	SQ YD	200	200				
25200110	SODDING, SALT TOLERANT	SQ YD	200	200				
40600290	BITUMINOUS MATERIALS (TACK COAT)	POUND	6068	6068				
40600400	MIXTURE FOR CRACKS, JOINTS, AND FLANGEWAYS	TON	13	13				
40600982	HOT-MIX ASPHALT SURFACE REMOVAL - BUTT JOINT	SQ YD	306	306				
40603200	POLYMERIZED HOT-MIX ASPHALT BINDER COURSE, IL-4.75, N50	TON	378	378				
40604062	HOT MIX ASPHALT SURFACE COURSE, MIX "D", IL-9.5, N70	TON	881	881				
42001300	PROTECTIVE COAT	SQ YD	695	695				
42400200	PORTLAND CEMENT CONCRETE SIDEWALK 5 INCH	SQ FT	3160	3160				
42400800	DETECTABLE WARNINGS	SQ FT	224	224				
44000159	HOT-MIX ASPHALT SURFACE REMOVAL, 2 1/2"	SQ YD	8989	8989				
44000600	SIDEWALK REMOVAL	SQ FT	3160	3160				
44201701	CLASS D PATCHES, TYPE I, 5 INCH	SQ YD	47	47				

SUMMARY OF QUANTITIES			TOTAL QUANTITIES URBAN	CONSTRUCTION TYPE CODE				
CODE NO	ITEM	UNIT		0005 80% FEDERAL 20% STATE	0005 100% STATE			
44201705	CLASS D PATCHES, TYPE II, 5 INCH	SQ YD	58	58				
44201709	CLASS D PATCHES, TYPE III, 5 INCH	SQ YD	184	184				
44201711	CLASS D PATCHES, TYPE IV, 5 INCH	SQ YD	407	407				
60252800	CATCH BASINS TO BE RECONSTRUCTED	EACH	4	4				
60262700	INLETS TO BE RECONSTRUCTED	EACH	2	2				
60266600	VALVE BOXES TO BE ADJUSTED	EACH	9	9				
60300105	FRAMES AND GRATES TO BE ADJUSTED	EACH	6	6				
60300305	FRAMES AND LIDS TO BE ADJUSTED	EACH	13	13				
60406000	FRAMES AND LIDS, TYPE 1, OPEN LID	EACH	6	6				
60406100	FRAMES AND LIDS, TYPE 1, CLOSED LID	EACH	8	8				
* 66900200	NON-SPECIAL WASTE DISPOSAL	CU YD	35	35				
* 66900530	SOIL DISPOSAL ANALYSIS	EACH	2	2				
* 66901001	REGULATED SUBSTANCES PRE-CONSTRUCTION PLAN	LSUM	1	1				
* 66901003	REGULATED SUBSTANCES FINAL CONSTRUCTION REPORT	LSUM	1	1				
* 66901006	REGULATED SUBSTANCES MONITORING	CAL DA	10	10				
								* SPECIALTY ITEMS

MODEL: Default
 FILE NAME: p:\pub\amrnon\dot\illinois\pwr\DOT\Documents\DOT_Offices\Dir\refc_1\Projects\143720\CADD\Design\143720-rht-500.dwg

USER NAME = rostkowsdr	DESIGNED - -	REVISED -
PLOT SCALE = 100,0000' / in.	DRAWN - -	REVISED -
PLOT DATE = 3/19/2021	CHECKED - -	REVISED -
	DATE - -	REVISED -

STATE OF ILLINOIS
DEPARTMENT OF TRANSPORTATION

SUMMARY OF QUANTITIES
F.A.U 3727 /DEMPSTER ST. (RIDGE AVE. - CHICAGO AVE.)

SCALE: NONE SHEET 1 OF 3 SHEETS STA. - TO STA. -

F.A.U. RTE. 3727	SECTION 2020-049-R5&SW	COUNTY COOK	TOTAL SHEETS 27	SHEET NO. 3
CONTRACT NO. 62L21			ILLINOIS FED. AID PROJECT	

REV-SEP

SUMMARY OF QUANTITIES			TOTAL QUANTITIES URBAN	CONSTRUCTION TYPE CODE				
CODE NO	ITEM	UNIT		0005 80% FEDERAL 20% STATE	0005 100% STATE			
67000400	ENGINEER'S FIELD OFFICE, TYPE A	CAL MO	6	6				
67100100	MOBILIZATION	L SUM	1	1				
70102620	TRAFFIC CONTROL AND PROTECTION, STANDARD 701501	L SUM	1	1				
70102622	TRAFFIC CONTROL AND PROTECTION, STANDARD 701502	L SUM	1	1				
70102625	TRAFFIC CONTROL AND PROTECTION, STANDARD 701606	L SUM	1	1				
70102634	TRAFFIC CONTROL AND PROTECTION, STANDARD 701611	L SUM	1	1				
70102635	TRAFFIC CONTROL AND PROTECTION, STANDARD 701701	L SUM	1	1				
70102640	TRAFFIC CONTROL AND PROTECTION, STANDARD 701801	L SUM	1	1				
70300100	SHORT TERM PAVEMENT MARKING	FOOT	7032	7032				
70300150	SHORT TERM PAVEMENT MARKING REMOVAL	SQ FT	2342	2342				
70300210	TEMPORARY PAVEMENT MARKING LETTERS AND SYMBOLS	SQ FT	73	73				
70300220	TEMPORARY PAVEMENT MARKING - LINE 4"	FOOT	2804	2804				
70300240	TEMPORARY PAVEMENT MARKING - LINE 6"	FOOT	1575	1575				
70300260	TEMPORARY PAVEMENT MARKING - LINE 12"	FOOT	42	42				
70300280	TEMPORARY PAVEMENT MARKING - LINE 24"	FOOT	1321	1321				

SUMMARY OF QUANTITIES			TOTAL QUANTITIES URBAN	CONSTRUCTION TYPE CODE				
CODE NO	ITEM	UNIT		0005 80% FEDERAL 20% STATE	0005 100% STATE			
70300520	PAVEMENT MARKING TAPE, TYPE III 4"	FOOT	1758	1758				
* 78000100	THERMOPLASTIC PAVEMENT MARKING - LETTERS AND SYMBOLS	SQ FT	73	73				
* 78000200	THERMOPLASTIC PAVEMENT MARKING - LINE 4"	FOOT	2804	2804				
* 78000400	THERMOPLASTIC PAVEMENT MARKING - LINE 6"	FOOT	1575	1575				
* 78000600	THERMOPLASTIC PAVEMENT MARKING - LINE 12"	FOOT	42	42				
* 78000650	THERMOPLASTIC PAVEMENT MARKING - LINE 24"	FOOT	1321	1321				
* 78100100	RAISED REFLECTIVE PAVEMENT MARKER	EACH	58	58				
78300200	RAISED REFLECTIVE PAVEMENT MARKER REMOVAL	EACH	42	42				
X0320050	CONSTRUCTION LAYOUT (SPECIAL)	L SUM	1	1				
X4400501	COMBINATION CURB AND GUTTER REMOVAL AND REPLACEMENT LESS THAN OR EQUAL TO 10 FEET	FOOT	1156	1156				
X5537800	STORM SEWERS TO BE CLEANED 12"	FOOT	300		300			
X6030310	FRAMES AND LIDS TO BE ADJUSTED (SPECIAL)	EACH	28	28				
X7030005	TEMPORARY PAVEMENT MARKING REMOVAL	SQ FT	4475	4475				

MODEL: Default
 FILE NAME: p:\mhammond.dwt\illinois\pwr\DOT\Documents\DOT_Offices\Dir\refc_1\Projects\143720\CADD\Drawings\143720-rh-500.dwg

USER NAME = rostkowsdr	DESIGNED - -	REVISED -
DRAWN - -	REVISOR - -	REVISOR - -
PLOT SCALE = 100,0000' / in.	CHECKED - -	REVISOR - -
PLOT DATE = 3/19/2021	DATE - -	REVISOR - -

STATE OF ILLINOIS
DEPARTMENT OF TRANSPORTATION

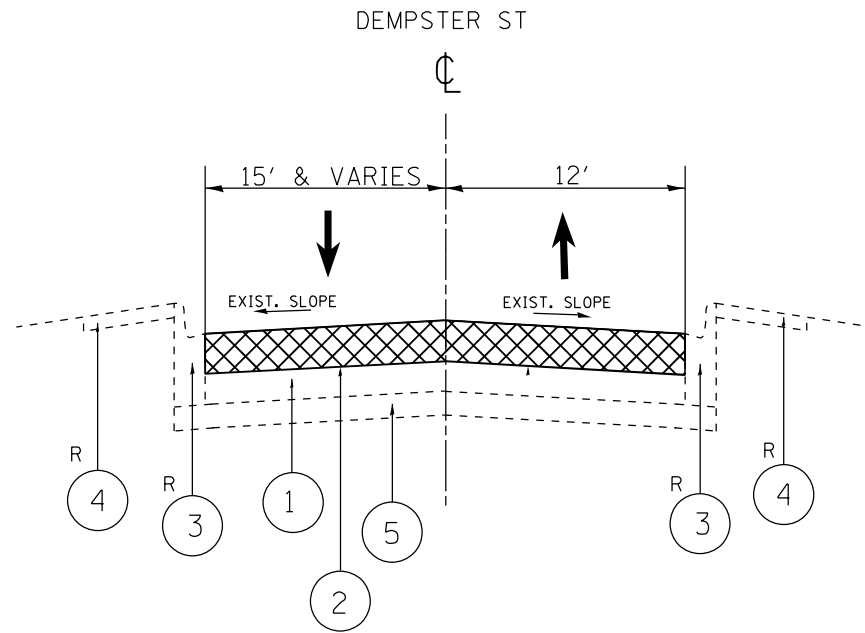
SUMMARY OF QUANTITIES
F.A.U 3727 /DEMPSTER ST. (RIDGE AVE. - CHICAGO AVE.)

F.A.U. RTE. 3727	SECTION 2020-049-R5&SW	COUNTY COOK	TOTAL SHEETS 27	SHEET NO. 4
CONTRACT NO. 62L21			ILLINOIS FED. AID PROJECT	

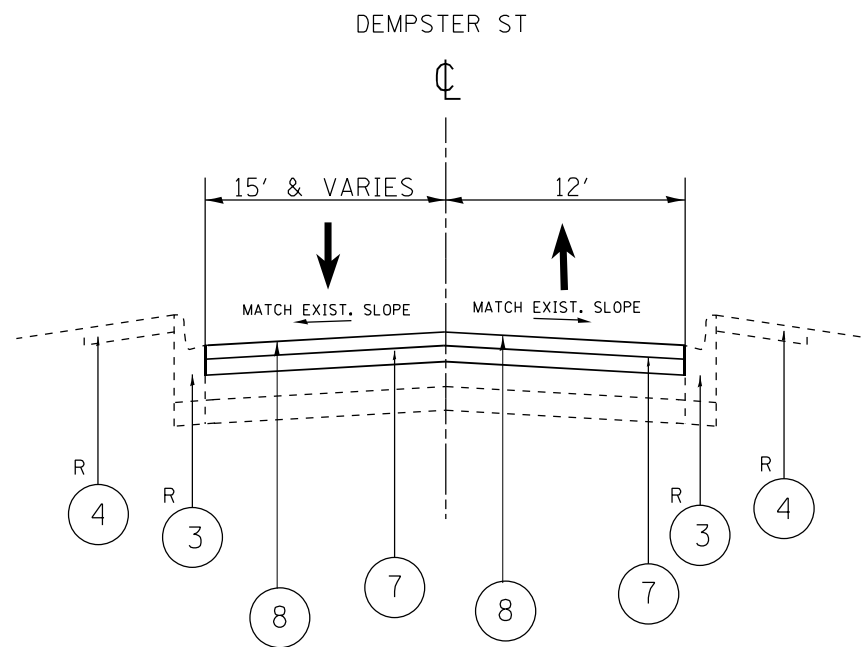
* SPECIALTY ITEMS
REV-SEP

LEGEND:

- ① EXIST. BRICK, 4"
 - ② EXIST. HOT-MIX ASPHALT PAVEMENT, 4" - 6"
 - ③ EXIST. CONCRETE TYPE B CURB
 - ④ EXIST. SIDEWALK
 - ⑤ EXIST. STABILIZED SUB-BASE
 - ⑥ PROP. HOT-MIX ASPHALT SURFACE REMOVAL, 2.5"
 - ⑦ PROP. POLYMERIZED HOT-MIX ASPHALT BINDER COURSE, IL-4.75, N50, .75"
 - ⑧ PROP. HOT-MIX ASPHALT SURFACE COURSE, MIX "D", IL-9.5, N70, 1.75"
- R CURB AND GUTTER, SIDEWALK REMOVAL AND REPLACEMENT
(LOCATION AS DIRECTED BY THE ENGINEER)
- * THE LONGITUDINAL SEALANT SHALL BE PLACED
OVER THE HMA BINDER COURSE.
- ** 8 FOOT PARKING LANES



EXISTING TYPICAL SECTION
STA. 21+68.97 TO STA. 31+59.89



PROPOSED TYPICAL SECTION
STA. 21+68.97 TO STA. 31+59.89

MODEL: Default
 FILE NAME: p:\pub\mranon.dwt\illinois\dot\Documents\DOT_Offices\Distrefc_1\Projects\143220\CADD\Drawings\143220-sh-ty-typical.dgn

USER NAME = rostkowski	DESIGNED -	REVISED -
PLOT SCALE = 100,0000' / in.	DRAWN -	REVISED -
PLOT DATE = 3/19/2021	CHECKED -	REVISED -
	DATE -	REVISED -

**STATE OF ILLINOIS
DEPARTMENT OF TRANSPORTATION**

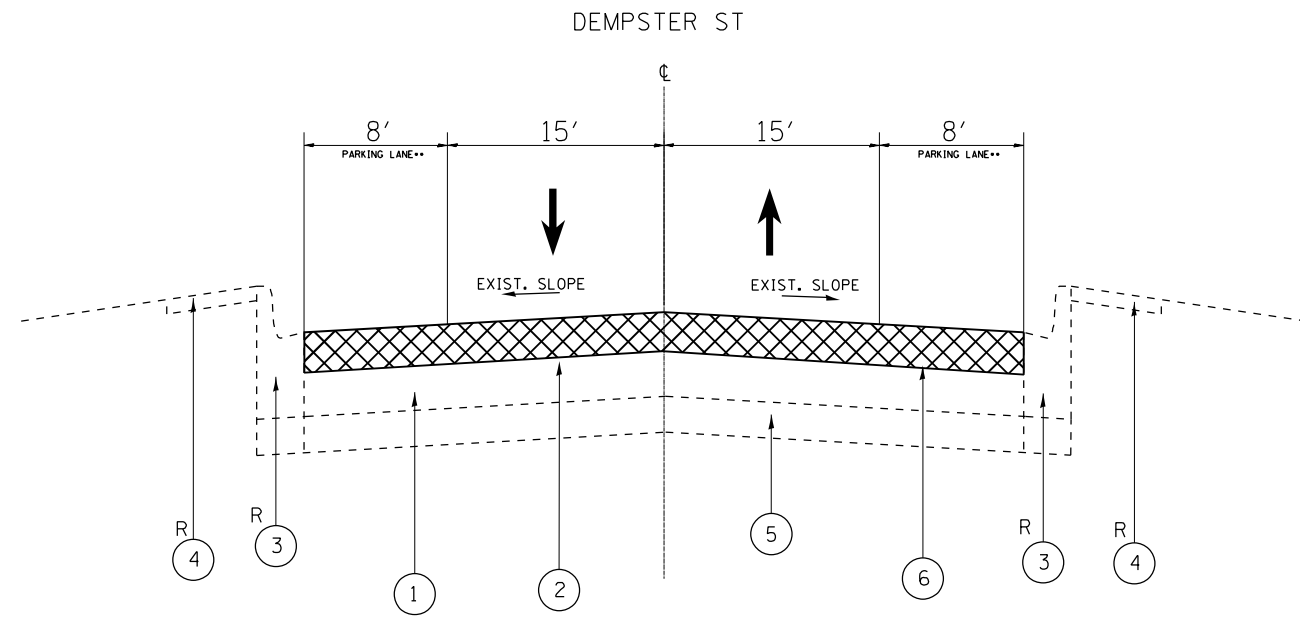
**EXISTING AND PROPOSED TYPICAL SECTIONS
DEMPSTER ST (RIDGE AVE TO CHICAGO AVE)**

SCALE: SHEET OF SHEETS STA. TO STA.

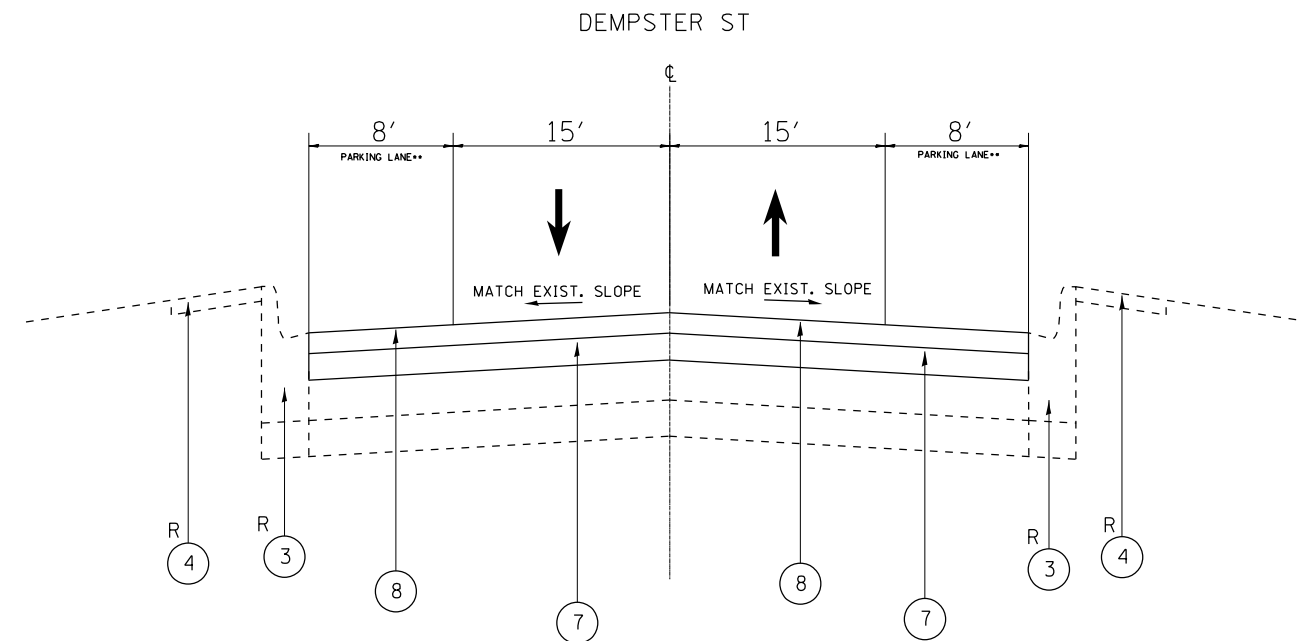
F.A.U. RTE.	SECTION	COUNTY	TOTAL SHEETS	SHEET NO.
3727/DEMPSTER ST	2020-049-R5&SW	COOK	27	7
			CONTRACT NO. 62L21	
		ILLINOIS	FED. AID PROJECT	

LEGEND:

- ① EXIST. BRICK, 4"
 - ② EXIST. HOT-MIX ASPHALT PAVEMENT, 4" - 6"
 - ③ EXIST. CONCRETE TYPE B CURB
 - ④ EXIST. SIDEWALK
 - ⑤ EXIST. STABILIZED SUB-BASE
 - ⑥ PROP. HOT-MIX ASPHALT SURFACE REMOVAL, 2.5"
 - ⑦ PROP. POLYMERIZED HOT-MIX ASPHALT BINDER COURSE, IL-4.75, N50, .75"
 - ⑧ PROP. HOT-MIX ASPHALT SURFACE COURSE, MIX "D", IL-9.5, N70, 1.75"
- R CURB AND GUTTER, SIDEWALK REMOVAL AND REPLACEMENT
(LOCATION AS DIRECTED BY THE ENGINEER)
- * THE LONGITUDINAL SEALANT SHALL BE PLACED
OVER THE HMA BINDER COURSE.
- ** 8 FOOT PARKING LANES



EXISTING TYPICAL SECTION
STA. 31+59.89 TO STA. 35+24.28



PROPOSED TYPICAL SECTION
STA. 31+59.89 TO STA. 35+24.28

MODEL: Default
 FILE NAME: p:\m\m\room.d\illinois.gov\PWIDOT\Documents\DOT_Offices\Distric: 1\Projects\143220\CADD\Drawings\143220-sh-typical.dgn

USER NAME = rostkowski	DESIGNED -	REVISED -
PLOT SCALE = 100,0000' / in.	DRAWN -	REVISED -
PLOT DATE = 3/19/2021	CHECKED -	REVISED -
	DATE -	REVISED -

**STATE OF ILLINOIS
DEPARTMENT OF TRANSPORTATION**

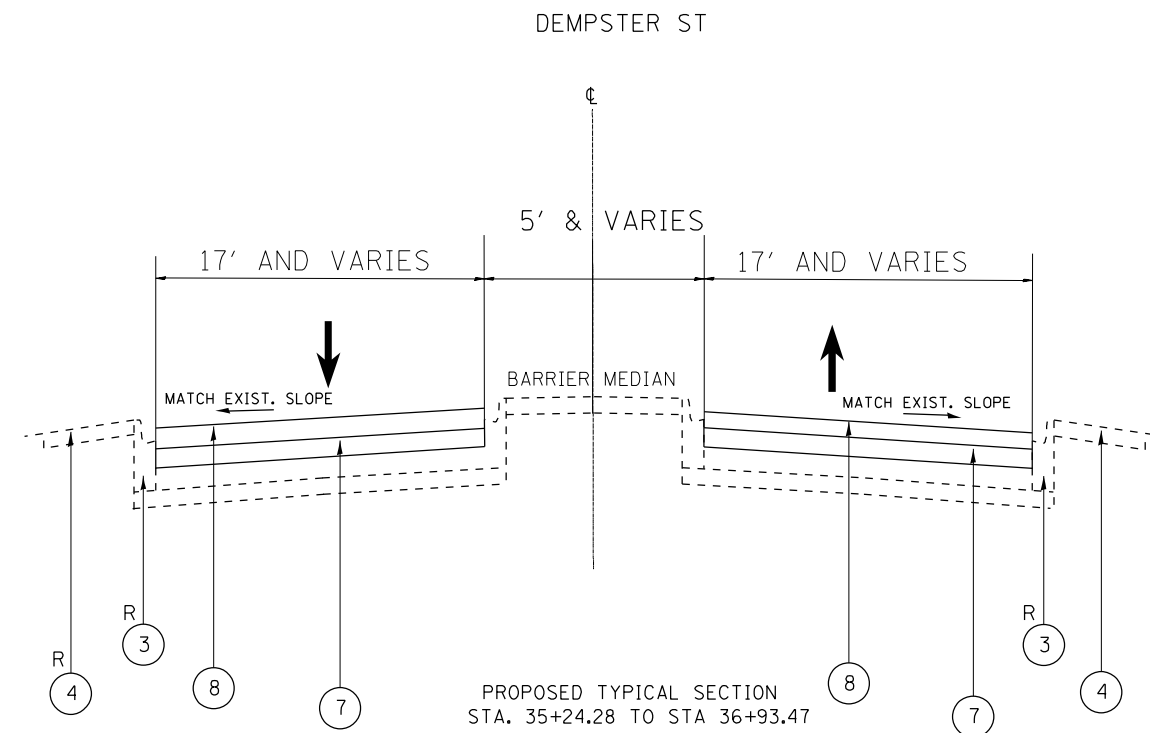
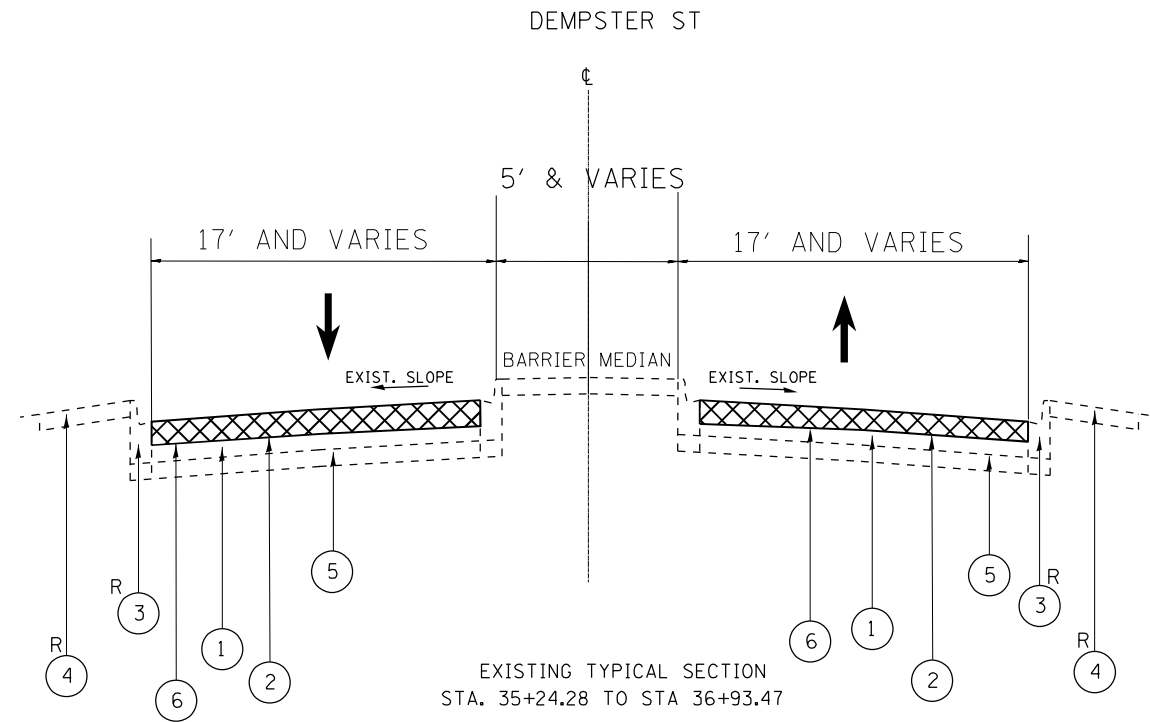
**EXISTING AND PROPOSED TYPICAL SECTIONS
DEMPSTER ST (RIDGE AVE TO CHICAGO AVE)**

SCALE: SHEET OF SHEETS STA. TO STA.

F.A.U. RTE.	SECTION	COUNTY	TOTAL SHEETS	SHEET NO.
3727/DEMPSTER ST	2020-049-R5&SW	COOK	27	8
ILLINOIS FED. AID PROJECT			CONTRACT NO. 62L21	

LEGEND:

- ① EXIST. BRICK, 4"
 - ② EXIST. HOT-MIX ASPHALT PAVEMENT, 4" - 6"
 - ③ EXIST. CONCRETE TYPE B CURB
 - ④ EXIST. SIDEWALK
 - ⑤ EXIST. STABILIZED SUB-BASE
 - ⑥ PROP. HOT-MIX ASPHALT SURFACE REMOVAL, 2.5"
 - ⑦ PROP. POLYMERIZED HOT-MIX ASPHALT BINDER COURSE, IL-4.75, N50, .75"
 - ⑧ PROP. HOT-MIX ASPHALT SURFACE COURSE, MIX "D", IL-9.5, N70, 1.75"
- R CURB AND GUTTER, SIDEWALK REMOVAL AND REPLACEMENT
(LOCATION AS DIRECTED BY THE ENGINEER)
- * THE LONGITUDINAL SEALANT SHALL BE PLACED
OVER THE HMA BINDER COURSE.
- ** 8 FOOT PARKING LANES



MODEL: Default
 FILE NAME: p:\pub\mroom.dwt\illinois.gov\PWIDOT\Documents\DOT_Offices\Distrefc_1\Projects\143220\CADD\Drawings\143220-shs-by-pca.dgn

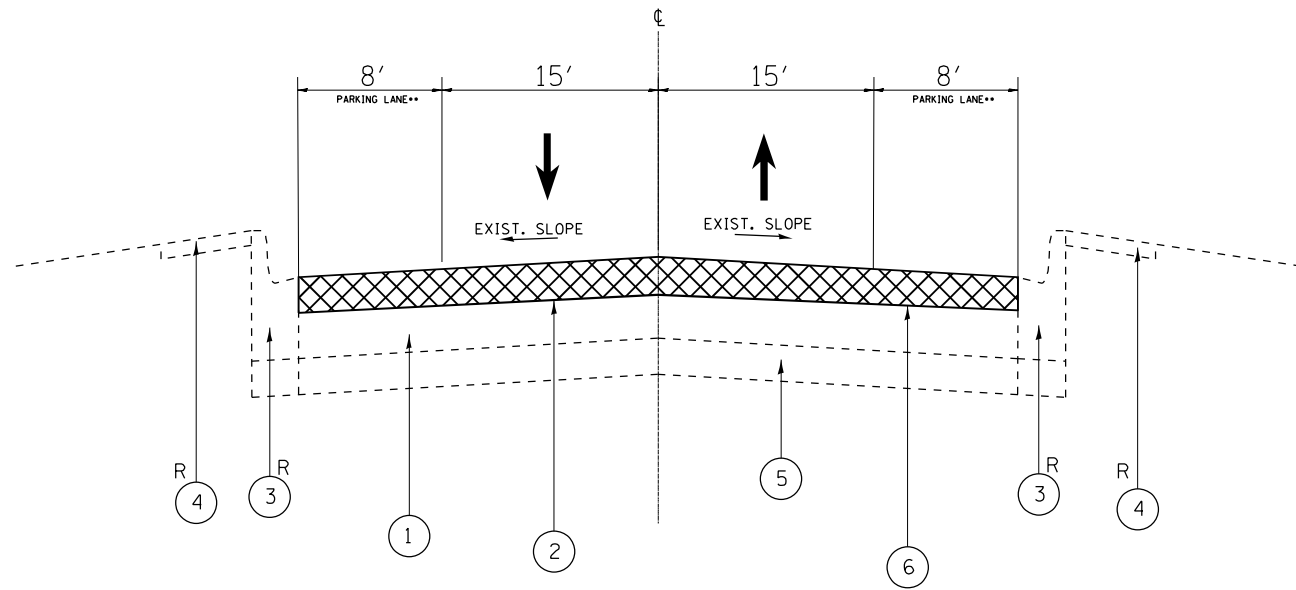
USER NAME = rostkowsdr	DESIGNED -	REVISED -
PLOT SCALE = 100,0000' / in.	DRAWN -	REVISED -
PLOT DATE = 3/19/2021	CHECKED -	REVISED -
	DATE -	REVISED -

**STATE OF ILLINOIS
DEPARTMENT OF TRANSPORTATION**

EXISTING AND PROPOSED TYPICAL SECTIONS DEMPSTER ST (RIDGE AVE TO CHICAGO AVE)			
SCALE:	SHEET	OF SHEETS	STA. TO STA.

F.A.U RTE.	SECTION	COUNTY	TOTAL SHEETS	SHEET NO.
3727/DEMPSTER ST	2020-049-R5&SW	COOK	27	9
			CONTRACT NO. 62L21	
ILLINOIS FED. AID PROJECT				

DEMPSTER ST

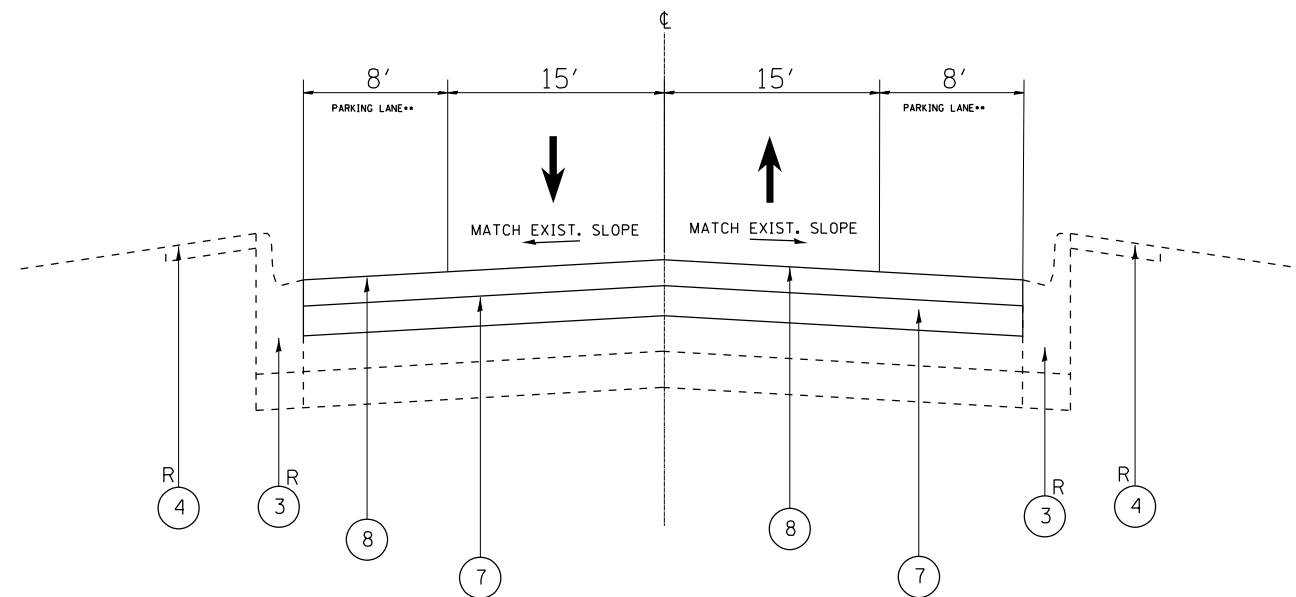


EXISTING TYPICAL SECTION
STA. 36+93.47 TO STA. 39+88.20

LEGEND:

- ① EXIST. BRICK, 4"
 - ② EXIST. HOT-MIX ASPHALT PAVEMENT, 4" - 6"
 - ③ EXIST. CONCRETE TYPE B CURB
 - ④ EXIST. SIDEWALK
 - ⑤ EXIST. STABILIZED SUB-BASE
 - ⑥ PROP. HOT-MIX ASPHALT SURFACE REMOVAL, 2.5"
 - ⑦ PROP. POLYMERIZED HOT-MIX ASPHALT BINDER COURSE, IL-4.75, N50, .75"
 - ⑧ PROP. HOT-MIX ASPHALT SURFACE COURSE, MIX "D", IL-9.5, N70, 1.75"
- R CURB AND GUTTER, SIDEWALK REMOVAL AND REPLACEMENT
(LOCATION AS DIRECTED BY THE ENGINEER)
- * THE LONGITUDINAL SEALANT SHALL BE PLACED
OVER THE HMA BINDER COURSE.
- ** 8 FOOT PARKING LANES

DEMPSTER ST



PROPOSED TYPICAL SECTION
STA. 36+93.47 TO STA. 39+88.20

MODEL: Default
 FILE NAME: p:\data\mroom.dwt\illinois.gov\PWIDOT\Documents\DOT_Offices\Distric: 1\Projects\ID143220\CADDData\Design\ID143220-shs-by-pca.dgn

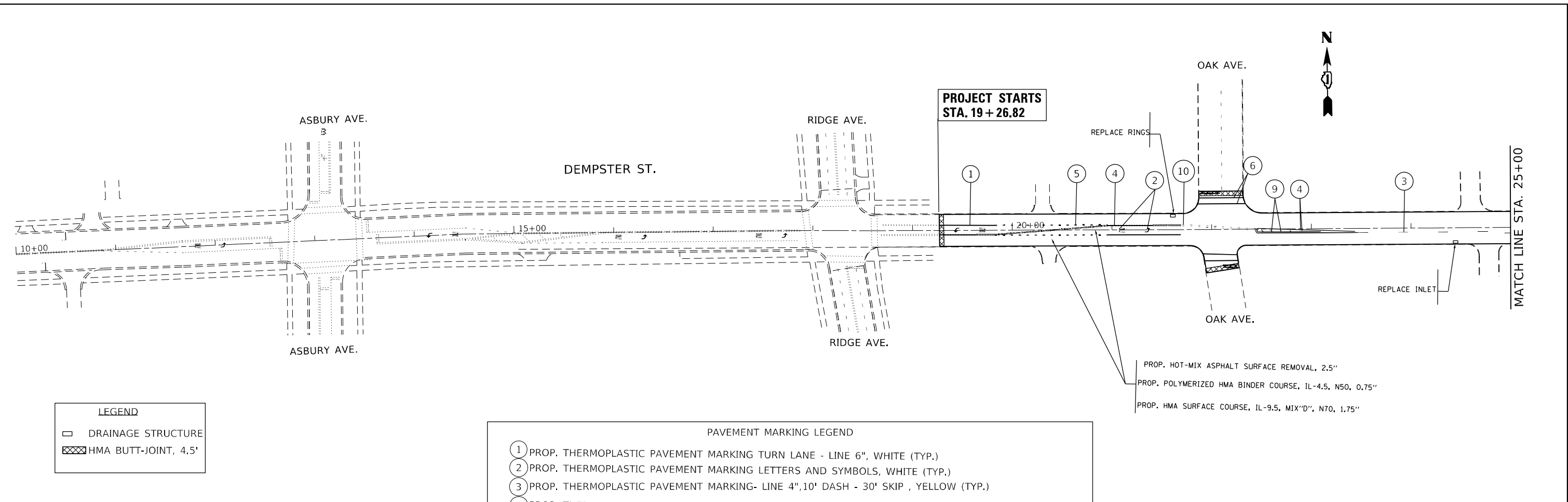
USER NAME = rostkowski	DESIGNED -	REVISED -
PLOT SCALE = 100,0000' / in.	DRAWN -	REVISED -
PLOT DATE = 3/19/2021	CHECKED -	REVISED -
	DATE -	REVISED -

**STATE OF ILLINOIS
DEPARTMENT OF TRANSPORTATION**

**EXISTING AND PROPOSED TYPICAL SECTIONS
DEMPSTER ST (RIDGE AVE TO CHICAGO AVE)**

SCALE: SHEET OF SHEETS STA. TO STA.

F.A.U. RTE.	SECTION	COUNTY	TOTAL SHEETS	SHEET NO.
9727/DEMPSTER ST	2020-049-RS&SW	COOK	27	10
			CONTRACT NO. 62L21	
		ILLINOIS	FED. AID PROJECT	

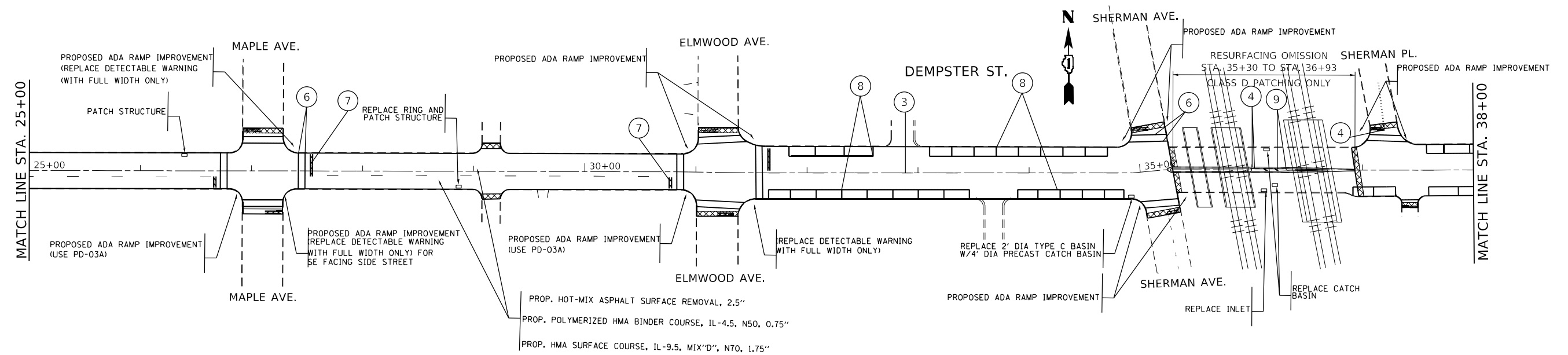


LEGEND
 □ DRAINAGE STRUCTURE
 ▨ HMA BUTT-JOINT, 4.5'

- PAVEMENT MARKING LEGEND**
- ① PROP. THERMOPLASTIC PAVEMENT MARKING TURN LANE - LINE 6", WHITE (TYP.)
 - ② PROP. THERMOPLASTIC PAVEMENT MARKING LETTERS AND SYMBOLS, WHITE (TYP.)
 - ③ PROP. THERMOPLASTIC PAVEMENT MARKING- LINE 4", 10' DASH - 30' SKIP , YELLOW (TYP.)
 - ④ PROP. THERMOPLASTIC PAVEMENT MARKING DOUBLE LINES 4" @ 11" C-C, YELLOW (TYP.)
 - ⑤ PROP. THERMOPLASTIC PAVEMENT MARKING- LINE 6", 2' DASH - 6' SKIP, WHITE (TYP.)
 - ⑥ PROP. THERMOPLASTIC PAVEMENT MARKING PEDESTRIAN CROSSWALK - LINE 6", WHITE (TYP.)
 - ⑦ PROP. THERMOPLASTIC PAVEMENT MARKING STOP BAR - LINE 24", WHITE (TYP.)
 - ⑧ PROP. THERMOPLASTIC PAVEMENT MARKING LINE 4", WHITE (TYP.)
 - ⑨ PROP. THERMOPLASTIC PAVEMENT MARKING - LINE 12", DIAGONALS, YELLOW (TYP.)
 - ⑩ PROP. THERMOPLASTIC PAVEMENT MARKING DOUBLE LINES 4", 2' DASH - 6' SKIP, YELLOW (TYP.)

PROP. HOT-MIX ASPHALT SURFACE REMOVAL, 2.5"
 PROP. POLYMERIZED HMA BINDER COURSE, IL-4.5, N50, 0.75"
 PROP. HMA SURFACE COURSE, IL-9.5, MIX "D", N70, 1.75"

NOTE:
 THE DRAINAGE STRUCTURES MARKED ON THE PLANS ARE IN POOR CONDITION. APPROXIMATE LOCATION WAS USED. THE REST OF THE DRAINAGE STRUCTURES SHALL BE REPAIRED OR REPLACED AS DIRECTED BY THE ENGINEER.



PROP. HOT-MIX ASPHALT SURFACE REMOVAL, 2.5"
 PROP. POLYMERIZED HMA BINDER COURSE, IL-4.5, N50, 0.75"
 PROP. HMA SURFACE COURSE, IL-9.5, MIX "D", N70, 1.75"

MODEL: Default
 FILE NAME: \\s:\hannom.dor\illinois.gov\PM\DOT\Documents\JDOT_Offices\District 1\Projects\143220\CD\Drawings\143220-shs-ellan.dwg

USER NAME = rostkowsdr	DESIGNED -	REVISED -
PLOT SCALE = 100,0000' / in.	DRAWN -	REVISED -
PLOT DATE = 3/19/2021	CHECKED -	REVISED -
	DATE -	REVISED -

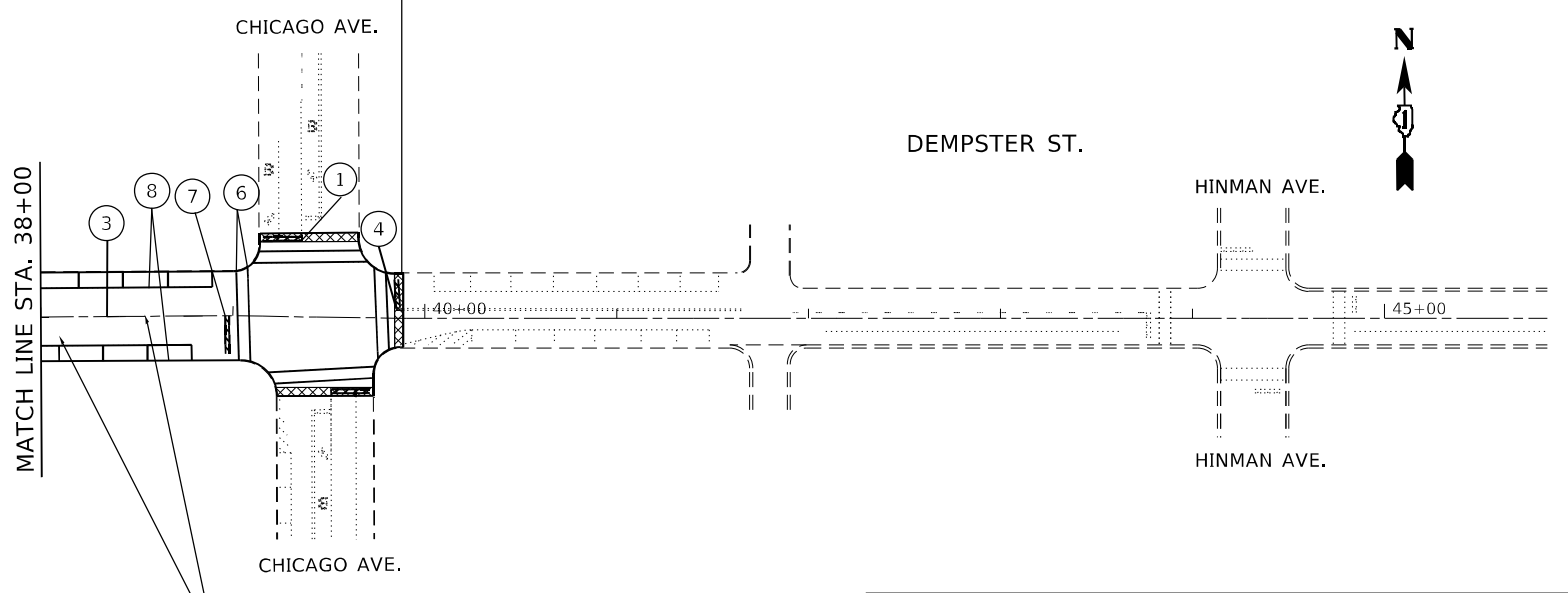
**STATE OF ILLINOIS
 DEPARTMENT OF TRANSPORTATION**

ROADWAY PLAN
F.A.U 3727 / DEMPSTER ST. (RIDGE AVE. - CHICAGO AVE.)

SCALE: 1"=50' SHEET OF SHEETS STA. TO STA.

F.A.U RTE. 3727/DEMPSTER ST	SECTION 2020-049-R56SW	COUNTY COOK	TOTAL SHEETS 27	SHEET NO. 11
ILLINOIS FED. AID PROJECT			CONTRACT NO. 62L21	

**PROJECT ENDS
STA. 39 + 88.20**



PROP. HOT-MIX ASPHALT SURFACE REMOVAL, 2.5"
 PROP. POLYMERIZED HMA BINDER COURSE, IL-4.5, N50, 0.75"
 PROP. HMA SURFACE COURSE, IL-9.5, MIX"D", N70, 1.75"

LEGEND
 □ DRAINAGE STRUCTURE
 ▨ HMA BUTT-JOINT, 4.5'

PAVEMENT MARKING LEGEND

- ① PROP. THERMOPLASTIC PAVEMENT MARKING TURN LANE - LINE 6", WHITE (TYP.)
- ② PROP. THERMOPLASTIC PAVEMENT MARKING LETTERS AND SYMBOLS, WHITE (TYP.)
- ③ PROP. THERMOPLASTIC PAVEMENT MARKING- LINE 4", 10' DASH - 30' SKIP , YELLOW (TYP.)
- ④ PROP. THERMOPLASTIC PAVEMENT MARKING DOUBLE LINES 4" @ 11" C-C, YELLOW (TYP.)
- ⑤ PROP. THERMOPLASTIC PAVEMENT MARKING- LINE 6", 2' DASH - 6' SKIP, WHITE (TYP.)
- ⑥ PROP. THERMOPLASTIC PAVEMENT MARKING PEDESTRIAN CROSSWALK - LINE 6", WHITE (TYP.)
- ⑦ PROP. THERMOPLASTIC PAVEMENT MARKING STOP BAR - LINE 24", WHITE (TYP.)
- ⑧ PROP. THERMOPLASTIC PAVEMENT MARKING LINE 4", WHITE (TYP.)
- ⑨ PROP. THERMOPLASTIC PAVEMENT MARKING - LINE 12", DIAGONALS, YELLOW (TYP.)
- ⑩ PROP. THERMOPLASTIC PAVEMENT MARKING DOUBLE LINES 4", 2' DASH - 6' SKIP, YELLOW (TYP.)

MODEL: Default
 FILE NAME: \\paulhammon.dot.illinois.gov\PIWDOT\Documents\DOT_Offices\District 1\Projects\143220\CaddData\Design\143220-sh-4-lb-00p

USER NAME = rostkowsidr	DESIGNED -	REVISED -
	DRAWN -	REVISED -
PLOT SCALE = 100,0000' / in.	CHECKED -	REVISED -
PLOT DATE = 3/19/2021	DATE -	REVISED -

**STATE OF ILLINOIS
DEPARTMENT OF TRANSPORTATION**

ROADWAY PLAN
F.A.U 3727 / DEMPSTER ST. (RIDGE AVE. - CHICAGO AVE.)
 SCALE: 1"=50' SHEET OF SHEETS STA. TO STA.

F.A.U RTE.	SECTION	COUNTY	TOTAL SHEETS	SHEET NO.
3727/DEMPSTER ST	2020-049-R5&SW	COOK	27	12
			CONTRACT NO. 62L21	
		ILLINOIS	FED. AID PROJECT	



ELMWOOD AVE.



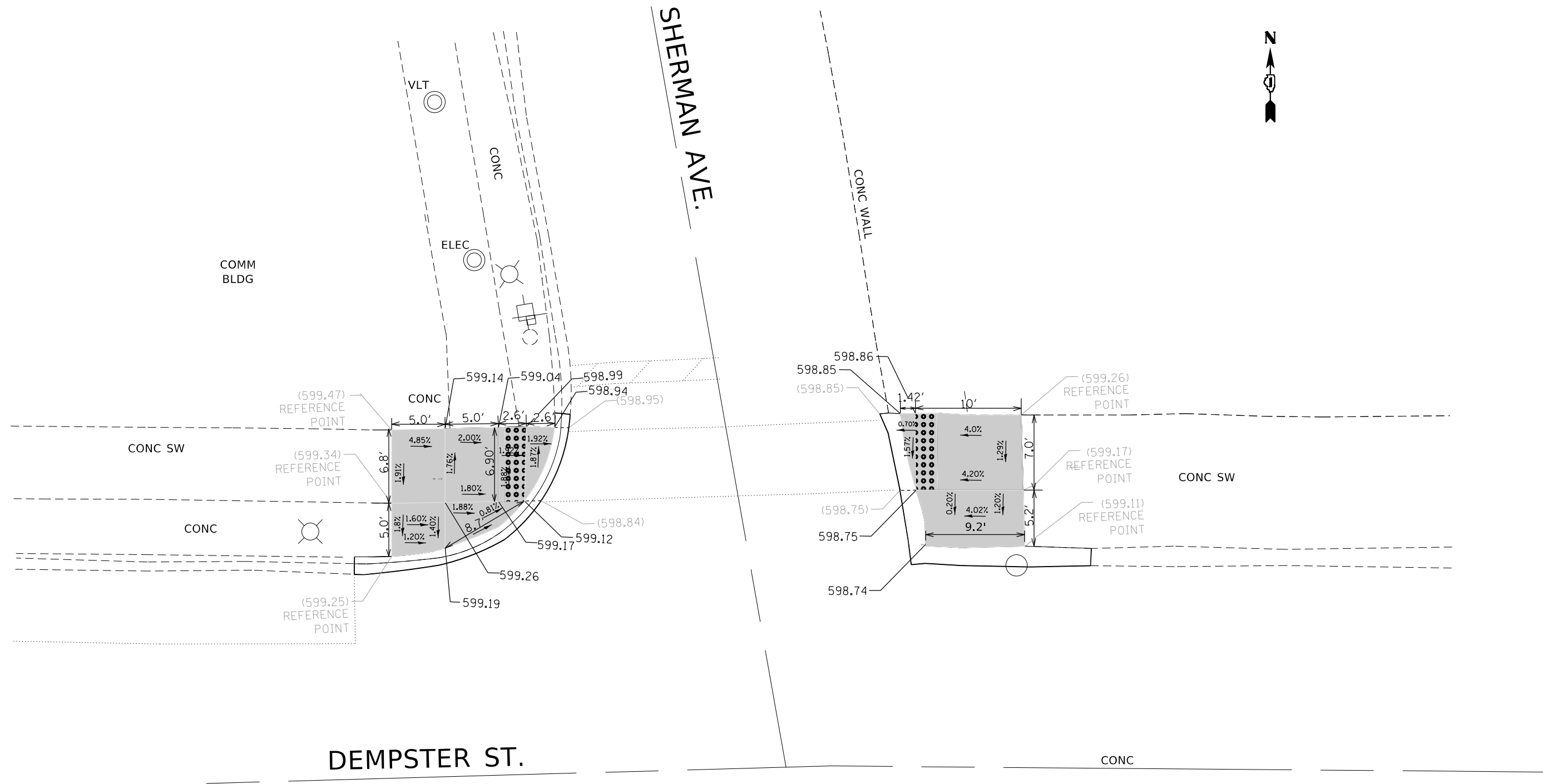
ELMWOOD AVE. NORTH EAST AND NORTH WEST CORNERS

LEGEND

- xx.xx' EXISTING LENGTH
- () EXISTING ELEVATION/SLOPE
- PROPOSED SIDEWALK
- PROPOSED SIDE CURB
- SC TOP OF PROPOSED SIDE CURB
- CLASS D PATCH
- DETECTABLE WARNINGS
- SIDEWALK REMOVAL REPLACE W/TOPSOIL & SOD

REFERENCE BENCHMARK ELEV 599.597'
 BENCHMARK : SQUARE CUT SOUTH EAST CORNER AT TCB
 LOCATION : ON NORTH WEST CORNER OF
 ELMWOOD AVE. AND DEMPSTER ST.

FILE NAME =	USER NAME = rostkowskir	DESIGNED -	REVISED -	STATE OF ILLINOIS DEPARTMENT OF TRANSPORTATION	SIDEWALK DETAIL PLAN F.A.U ROUTE 3727 (DEMPSTER ST)- RIDGE AVE. TO CHICAGO AVE.	F.A.U. RTE. 3727	SECTION 2020-049-R5&SW	COUNTY COOK	TOTAL SHEETS 27	SHEET NO. 13		
Default	PLOT SCALE = 10.0000' / in.	CHECKED -	REVISED -			SCALE:	SHEET 1 OF 23 SHEETS	STA. TO STA.	CONTRACT NO. 62L21			
	PLOT DATE = 3/19/2021	DATE -	REVISED -			ILLINOIS FED. AID PROJECT						



SHERMAN AVE. NORTH EAST & NORTH WEST CORNERS

LEGEND

- xx.xx' EXISTING LENGTH
- () EXISTING ELEVATION/SLOPE
- PROPOSED SIDEWALK
- PROPOSED SIDE CURB
- CLASS D PATCH
- DETECTABLE WARNINGS
- SIDEWALK REMOVAL
REPLACE W/TOPSOIL & SOD
- SC TOP OF PROPOSED SIDE CURB

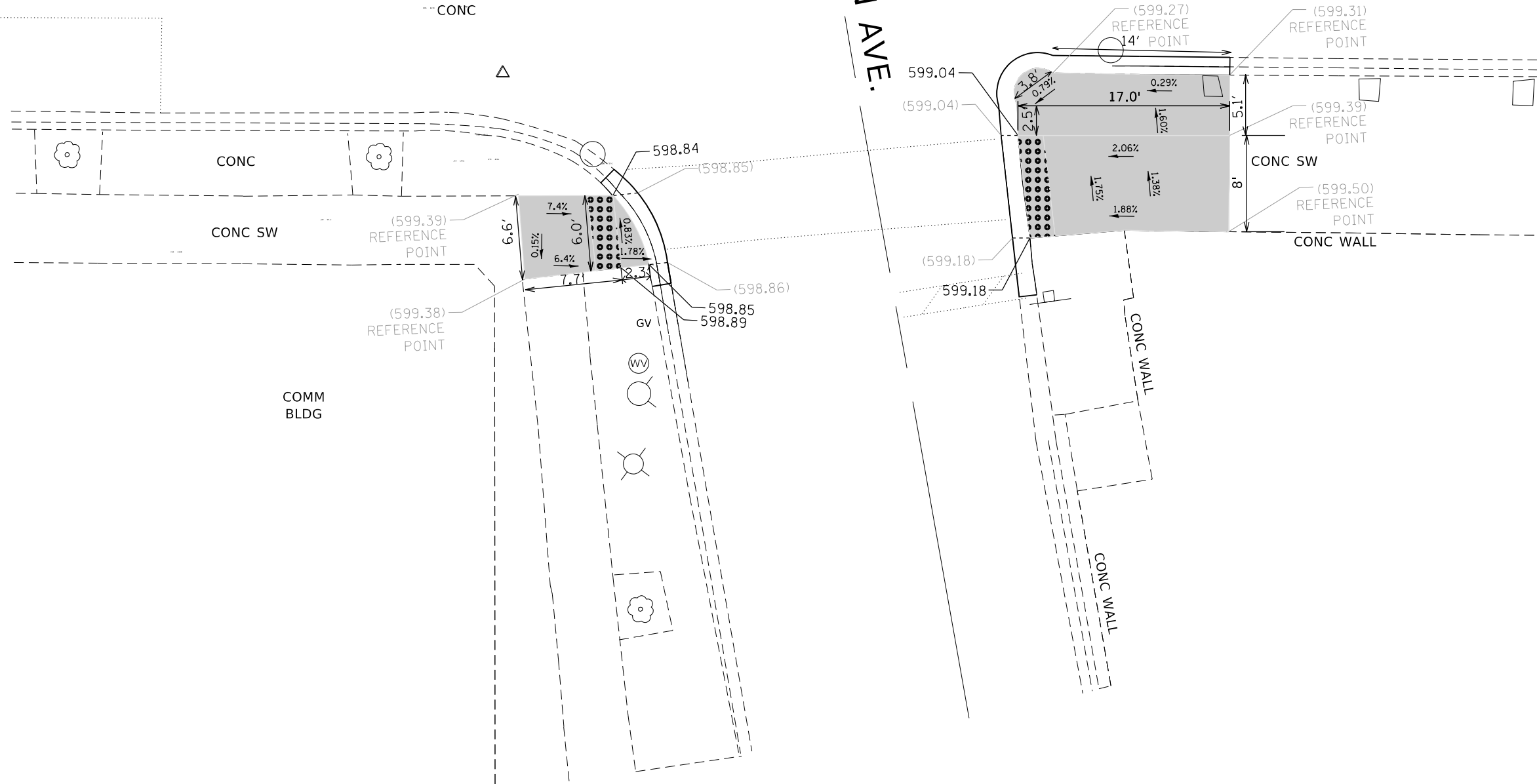
REFERENCE BENCHMARK ELEV 600.1027' (NOT SHOWN)
 BENCHMARK : POLE LIGHT
 LOCATION : ON NORTH WEST CORNER OF SHERMAN AVE. AND DEMPSTER ST.

FILE NAME =	USER NAME = rostkowski	DESIGNED -	REVISED -	STATE OF ILLINOIS DEPARTMENT OF TRANSPORTATION	SIDEWALK DETAIL PLAN F.A.U ROUTE 3727 (DEMPSTER ST)- RIDGE AVE. TO CHICAGO AVE.	F.A.U. RTE.	SECTION	COUNTY	TOTAL SHEETS	SHEET NO.
pw:\planroom.dot.illinois.gov\PIDOT\Documents\IDOT Offices\District 1\Projects\0143220\Drawings\Design\0143220-sht-details.dgn		CHECKED -	REVISED -			3727	2020-049-R5&SW	COOK	27	14
Default	PLOT DATE = 3/19/2021	DATE -	REVISED -			SCALE: SHEET 1 OF 23 SHEETS STA. TO STA.		ILLINOIS FED. AID PROJECT CONTRACT NO. 62L21		

DEMPSTER ST.

CONC

SHERMAN AVE.



SHERMAN AVE. SOUTH EAST AND SOUTHWEST CORNERS

LEGEND

xx.xx'

EXISTING LENGTH

()

EXISTING ELEVATION/SLOPE



PROPOSED SIDEWALK



PROPOSED SIDE CURB

SC

TOP OF PROPOSED SIDE CURB



CLASS D PATCH



DETECTABLE WARNINGS



SIDEWALK REMOVAL
REPLACE W/TOPSOIL & SOD

REFERENCE BENCHMARK ELEV 600.1027' (NOT SHOWN)

BENCHMARK : POLE LIGHT

LOCATION : ON NORTH WEST CORNER OF SHERMAN AVE. AND DEMPSTER ST

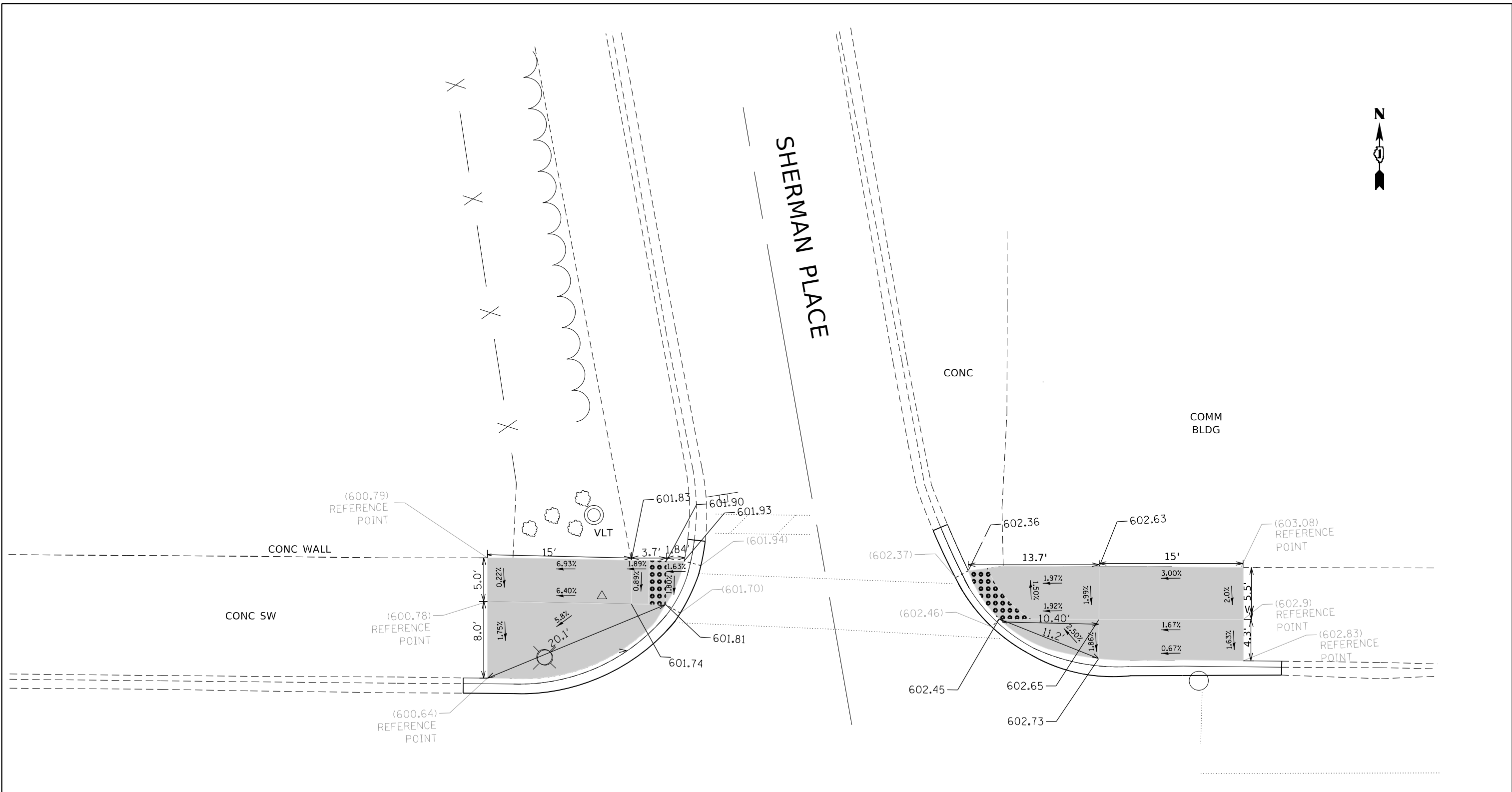
FILE NAME =	USER NAME = rostkowski	DESIGNED -	REVISOR -
pw:\planning\dot.illinois.gov\PIDOT\Documents\IDOT Offices\District 1\Projects\0143220\Drawings\Design\0143220-sht-details.dgn		DRAWN -	REVISOR -
Default	PLOT SCALE = 10.0000' / in.	CHECKED -	REVISOR -
	PLOT DATE = 3/19/2021	DATE -	REVISOR -

STATE OF ILLINOIS
DEPARTMENT OF TRANSPORTATION

SIDEWALK DETAIL PLAN
F.A.U. ROUTE 3727 (DEMPSTER ST)- RIDGE AVE. TO CHICAGO AVE.

SCALE: SHEET 1 OF 23 SHEETS STA. TO STA.

F.A.U. RTE.	SECTION	COUNTY	TOTAL SHEETS	SHEET NO.
3727	2020-049-R5&SW	COOK	27	15
CONTRACT NO. 62L21				
ILLINOIS FED. AID PROJECT				



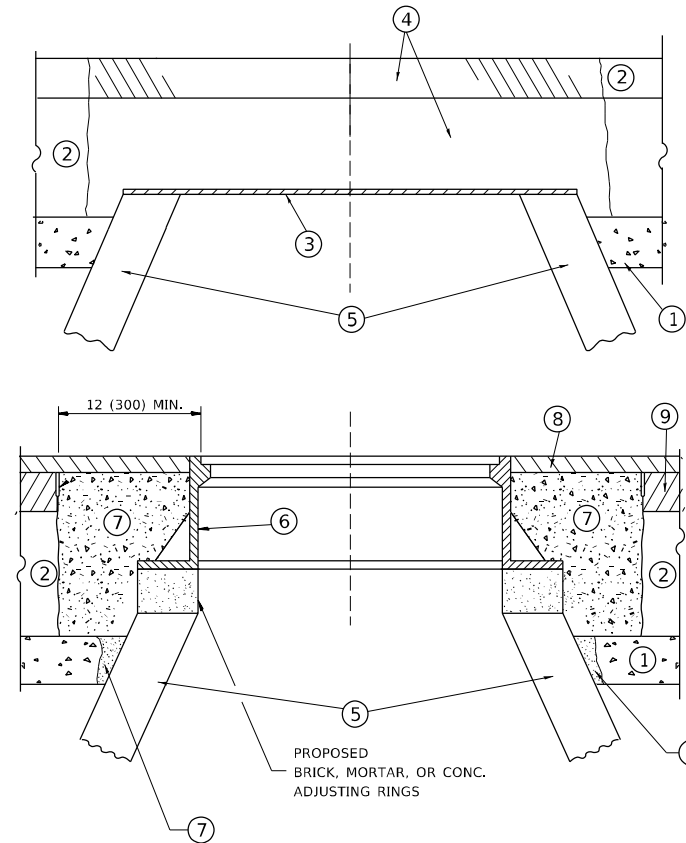
SHERMAN PLACE NORTH EAST AND NORTH WEST CORNERS

LEGEND

- xx.xx' EXISTING LENGTH
- () EXISTING ELEVATION/SLOPE
- PROPOSED SIDEWALK
- PROPOSED SIDE CURB
- SC TOP OF PROPOSED SIDE CURB
- CLASS D PATCH
- DETECTABLE WARNINGS
- SIDEWALK REMOVAL REPLACE W/TOPSOIL & SOD

REFERENCE BENCHMARK ELEV 601.186' (NOT SHOWN)
 BENCHMARK : X-CUT ON NORTH BOLT ON LP.BASE
 LOCATION : ON NORTH WEST CORNER OF SHERMAN PLACE AND DEMPSTER ST.

FILE NAME =	USER NAME = rostkowski	DESIGNED -	REVISED -	STATE OF ILLINOIS DEPARTMENT OF TRANSPORTATION	SIDEWALK DETAIL PLAN F.A.U ROUTE 3727 (DEMPSTER ST)- RIDGE AVE. TO CHICAGO AVE.	F.A.U. RTE.	SECTION	COUNTY	TOTAL SHEETS	SHEET NO.	
pw:\planroom.dot.illinois.gov\PIDOT\Documents\IDOT Offices\District 1\Projects\0143220\Drawings\Design\0143220-sht-details.dgn		DRAWN -	REVISED -			3727	2020-049-R5&SW	COOK	27	16	
Default	PLOT SCALE = 10.0000' / in.	CHECKED -	REVISED -			CONTRACT NO. 62L21					
	PLOT DATE = 3/19/2021	DATE -	REVISED -			ILLINOIS FED. AID PROJECT					



NOTES

EXISTING BROKEN FRAMES AND LIDS SHALL BE REMOVED AND DISPOSED OF BY THE CONTRACTOR AND SHALL BE REPLACED AS DIRECTED BY THE ENGINEER. REPLACEMENT FRAMES AND LIDS WILL BE PAID FOR IN ACCORDANCE WITH ARTICLE 109.04 OF THE STANDARD SPECIFICATIONS UNLESS A SEPARATE PAY ITEM HAS BEEN PROVIDED.

IF THE EXISTING LIDS ARE OPEN, THE FRAME WILL BE ADJUSTED TO THE ELEVATION OF THE MILLED PAVEMENT SURFACE PRIOR TO THE MILLING OPERATION. THE FRAME WILL NOT BE REMOVED AND COVERED BY THE METAL PLATE.

CITY OF CHICAGO CASTINGS ARE THE PROPERTY OF THE CITY AND THE CONTRACTOR SHALL NOTIFY THE CITY FOR REMOVAL AND DISPOSITION OF THE CASTINGS.

THE METAL PLATE USED TO COVER THE STRUCTURE SHALL REMAIN THE PROPERTY OF THE CONTRACTOR.

WHEN STRUCTURES ARE TO BE ADJUSTED OR RECONSTRUCTED, THE LOWERING AND RAISING OF THE FRAMES AND LIDS WILL NOT BE PAID FOR SEPARATELY BUT WILL BE INCLUDED IN THE COST OF THE CORRESPONDING PAY ITEM.

CONSTRUCTION PROCEDURES

STAGE 1 (BEFORE PAVEMENT MILLING)

- A) REMOVE A MINIMUM OF 12 (300) OF THE PAVEMENT FROM AROUND THE STRUCTURE.
- B) REMOVE THE EXISTING FRAME AND LID FROM THE STRUCTURE.
- C) COVER THE STRUCTURE OPENING WITH A 36 (900) DIAMETER METAL PLATE.
- D) BACKFILL WITH CRUSHED STONE AND A MINIMUM 1½ (40) THICK HMA SURFACE MIX APPROVED BY THE ENGINEER.

STAGE 2 (AFTER PAVEMENT MILLING)

- A) REMOVE THE HMA SURFACE MIX AND CRUSHED STONE.
- B) INSTALL THE FRAME AND LID; ADJUST THE FRAME TO ITS FINAL SURFACE ELEVATION.
- C) THE SURROUNDING SPACE SHALL BE FILLED WITH CLASS PP-1 * CONCRETE TO THE ELEVATION OF THE SURFACE OF THE EXISTING BASE COURSE OR THE BINDER COURSE.

* UNLESS OTHERWISE SPECIFIED IN THE PLANS.

THE PROCEDURE EXPLAINED ABOVE SHALL CONFORM TO THE APPLICABLE PORTIONS OF SECTIONS 353, 406, 602, AND 603 OF THE STANDARD SPECIFICATIONS EXCEPT THAT *THE CONTRACTOR SHALL ADJUST THE STRUCTURES TO THE FINISHED PAVEMENT ELEVATION NO MORE THAN 5 CALENDAR DAYS PRIOR TO PLACEMENT OF THE FINAL LIFT OF SURFACE UNLESS APPROVED BY THE ENGINEER."

LEGEND

- ① SUB-BASE GRANULAR MATERIAL
- ② EXISTING PAVEMENT
- ③ 36 (900) DIAMETER METAL PLATE
- ④ PROPOSED CRUSHED STONE AND HMA SURFACE MIX
- ⑤ EXISTING STRUCTURE
- ⑥ FRAME AND LID (SEE NOTES)
- ⑦ CLASS PP-1 *CONCRETE
- ⑧ PROPOSED HMA SURFACE COURSE
- ⑨ PROPOSED HMA BINDER COURSE

LOCATION OF STRUCTURES

THE CONTRACTOR WILL BE REQUIRED TO KEEP A RECORD OF THE LOCATIONS OF THE BURIED STRUCTURES ACCORDING TO THE STATION AND DISTANCE LEFT OR RIGHT OF THE CENTERLINE OF PAVEMENT. UPON COMPLETION OF THE WORK, THE CONTRACTOR WILL DELIVER THE RECORD TO THE ENGINEER.

BASIS OF PAYMENT

REMOVING FRAMES AND LIDS ON DRAINAGE AND UTILITY STRUCTURES IN THE PAVEMENT PRIOR TO MILLING, AND ADJUSTING TO FINAL GRADE PRIOR TO PLACING THE SURFACE COURSE, WILL BE PAID FOR AT THE CONTRACT UNIT PRICE EACH FOR *FRAMES AND LIDS TO BE ADJUSTED (SPECIAL)."

THIS WORK WILL NOT BE PAID FOR WHEN DRAINAGE AND UTILITY STRUCTURES ARE SPECIFIED FOR PAYMENT AS STRUCTURE RECONSTRUCTION.

NEW FRAMES AND LIDS, WHEN SPECIFIED, WILL BE PAID FOR SEPARATELY.

DETAILS FOR FRAMES AND LIDS ADJUSTMENT WITH MILLING

ALL DIMENSIONS ARE IN INCHES (MILLIMETERS) UNLESS OTHERWISE SHOWN

MODEL: Default
 FILE NAME: p:\m\m\room.dwg
 PROJECT: P:\Projects\143720\CADDData\Design\DIS\Stg.dwg

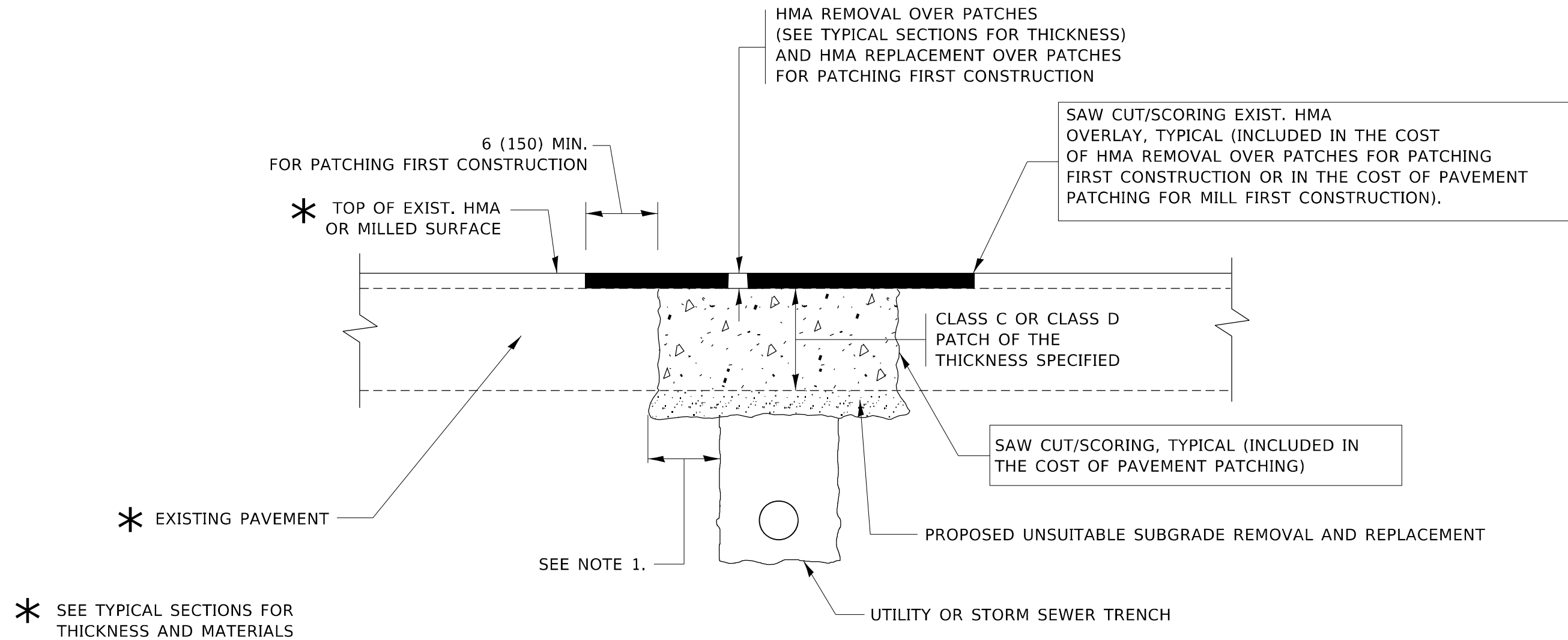
USER NAME = rostkowsdr	DESIGNED - R. SHAH	REVISED - R. WEDEMAN 05-14-04
	DRAWN -	REVISED - R. BORO 01-01-07
PLOT SCALE = 100,0000' / in.	CHECKED -	REVISED - R. BORO 03-09-11
PLOT DATE = 3/19/2021	DATE - 10-25-94	REVISED - R. BORO 12-06-11

**STATE OF ILLINOIS
DEPARTMENT OF TRANSPORTATION**

**DETAILS FOR
FRAMES AND LIDS ADJUSTMENT WITH MILLING**

SCALE: NONE SHEET 1 OF 1 SHEETS STA. TO STA.

F.A.U. RTE.	SECTION	COUNTY	TOTAL SHEETS	SHEET NO.
3727/DEMPSTER ST	2020-049-R5&SW	COOK	27	18
BD600-03 (BD-8)		CONTRACT NO. 62L21		
ILLINOIS		FED. AID PROJECT		



NOTES:

1. THE WIDTH OF THE FULL DEPTH PATCH OVER A TRENCH SHALL BE 12 (300) WIDER ON EACH SIDE OF THE TRENCH.
2. FOR METHOD OF MEASUREMENT AND BASIS OF PAYMENT, SEE RECURRING SPECIAL PROVISION "PATCHING WITH HOT-MIX ASPHALT OVERLAY REMOVAL".

SEQUENCE OF CONSTRUCTION (PATCHING FIRST)

1. REMOVE THE EXISTING HMA MATERIAL OVER THE AREA TO BE PATCHED.
2. REMOVE AND REPLACE WITH CLASS C OR D PATCH.
3. REPLACE HMA MATERIAL OVER THE AREA TO BE PATCHED.

SEQUENCE OF CONSTRUCTION (MILLING FIRST)

1. MILL HMA FIRST IF THERE IS AT LEAST 4½ INCHES OR MORE OF HMA MATERIAL ON TOP OF THE EXISTING PAVEMENT OR IF THE PAVEMENT IS FULL DEPTH HMA. A MINIMUM OF 2 INCHES OF HMA MATERIAL SHALL BE IN PLACE AFTER MILLING.
2. REMOVE AND REPLACE WITH FULL DEPTH CLASS D PATCHES TO TOP OF MILLED SURFACE.

ALL DIMENSIONS ARE IN INCHES (MILLIMETERS) UNLESS OTHERWISE SHOWN.

MODEL: Default
FILE NAME: pavementsurfacedata\pavementsurfacedata\DOT Office\Bates\1\Project\143220\CADD\Design\Design\DESIGN.dgn

USER NAME = rostkowski	DESIGNED - R. SHAH	REVISED - A. ABBAS 04-27-98
	DRAWN -	REVISED - R. BORO 01-01-07
PLOT SCALE = 100,0000' / in.	CHECKED -	REVISED - R. BORO 09-04-07
PLOT DATE = 3/19/2021	DATE - 10-25-94	REVISED - K. ENG 10-27-08

**STATE OF ILLINOIS
DEPARTMENT OF TRANSPORTATION**

**PAVEMENT PATCHING FOR
HMA SURFACED PAVEMENT**

SCALE: NONE SHEET 1 OF 1 SHEETS STA. TO STA.

F.A.U. RTE.	SECTION	COUNTY	TOTAL SHEETS	SHEET NO.
3727/DEMPSTER ST	2020-049-R5&SW	COOK	27	19
BD400-04 (BD-22)		CONTRACT NO. 62L21		
ILLINOIS FED. AID PROJECT				

VARIABLE - TO MEET EXISTING DIMENSIONS AND FIELD CONDITIONS (SEE NOTE 2)

PROP. CONC. CURB OR CURB AND GUTTER REPLACEMENT IN ACCORDANCE WITH STATE STANDARD 606001. (SEE NOTE 2)

SAW CUT FULL DEPTH - INCLUDED IN THE COST OF SIDEWALK, DRIVEWAY OR MEDIAN SURFACE REMOVAL PAY ITEM.

SEE STATE STANDARD 606001

18" (450) MAX.

EXISTING OR PROPOSED HMA SURFACE (IF APPLICABLE)

¼" (5) **

EXISTING SIDEWALK, DRIVEWAY, MEDIAN SURFACE, SOD OR GROUND.

PROPOSED SIDEWALK, DRIVEWAY PAVEMENT, MEDIAN SURFACE OR SODDING SALT TOLERANT WITH TOP SOIL, 4" (100) SOD RESTORATION (SEE NOTE 1).

EXISTING CONCRETE PAVEMENT, CONCRETE BASE COURSE OR FLEXIBLE PAVEMENT

3" (75) MIN.

SUITABLE BACKFILL MATERIAL (INCLUDED IN THE COST OF CURB OR CURB AND GUTTER REMOVAL AND REPLACEMENT)

* 3" (75) MINIMUM FROM TOP AND BOTTOM OF THE CONCRETE PAVEMENT OR BASE COURSE.

** IF THE FINAL SURFACE OF THE PAVEMENT IS CONCRETE, THE GUTTER IS TO BE FLUSH WITH THE PAVEMENT.

PROPOSED ¾" (20) PREFORMED EXPANSION JOINT AT CONCRETE SIDEWALKS, DRIVEWAYS, AND MEDIANS. (INCLUDED IN THE COST OF CURB OR CURB AND GUTTER REMOVAL AND REPLACEMENT.)

UNSUITABLE SUB-BASE MATERIAL TO BE REMOVED, IF DIRECTED BY THE ENGINEER, SHALL BE REPLACED WITH EITHER SUB-BASE GRANULAR MATERIAL, TYPE B OR ADDITIONAL THICKNESS OF CONCRETE.

REMOVAL AND REPLACEMENT 4" (100) OR LESS IS INCLUDED IN THE COST OF CURB OR CURB AND GUTTER REMOVAL AND REPLACEMENT.

REMOVAL AND REPLACEMENT IN EXCESS OF 4" (100) WILL BE PAID FOR IN ACCORDANCE WITH ARTICLE 109.04 OF THE STANDARD SPECIFICATIONS.

PROPOSED #6 (20) EPOXY COATED TIE BARS 24" (600) LONG AT 24" (600) CENTERS WILL NOT BE PAID FOR SEPARATELY. DELETE EPOXY COATED TIE BARS IF EXISTING TIE BARS ARE USUABLE AS DETERMINED BY THE ENGINEER. (SEE NOTE 3).

NOTE:

- SIDEWALK, DRIVEWAY PAVEMENT OR MEDIAN SURFACE SHALL BE SIMILAR TO THE MATERIAL BEING REMOVED AND WILL BE PAID FOR SEPARATELY.
SODDING, SALT TOLERANT AND TOP SOIL, FURNISH AND PLACE 4" WILL BE PAID FOR SEPARATELY.
- FERTILIZER FOR THE PLACEMENT OF THE SOD IS NOT REQUIRED.
- CURB OR CURB AND GUTTER REPLACEMENT SHALL MATCH THE SHAPE OF THE EXISTING CURB OR CURB AND GUTTER UNLESS OTHERWISE SPECIFIED.
- FOR CURB OR CURB AND GUTTER REMOVAL AND REPLACEMENT ADJACENT TO FLEXIBLE PAVEMENT DELETE EPOXY COATED TIE BARS.
- LONGITUDINAL BARS, IF ENCOUNTERED IN THE EXISTING CURB OR CURB AND GUTTER, ARE NOT TO BE REPLACED. CUTTING AND REMOVING LONGITUDINAL BARS SHALL BE INCLUDED IN THE COST OF CURB OR CURB AND GUTTER REMOVAL AND REPLACEMENT.
- THE COST OF HMA SURFACE REMOVAL IN THE EXISTING GUTTER FLAG SHALL BE INCLUDED IN THE COST OF THE CURB AND GUTTER REMOVAL AND REPLACEMENT.
- THE REMOVAL AND REPLACEMENT OF THE EXISTING CURB OR CURB AND GUTTER SHALL BE DONE IN ACCORDANCE WITH THE APPLICABLE PORTIONS OF SECTION 440 AND 606 OF THE STANDARD SPECIFICATIONS.
- THE LOCATIONS OF REMOVAL AND REPLACEMENT OF EXISTING CURB OR CURB AND GUTTER SHALL BE DETERMINED BY THE RESIDENT ENGINEER AT THE TIME OF CONSTRUCTION.

BASIS OF PAYMENT

THIS WORK WILL BE PAID FOR AT THE CONTRACT UNIT PRICE PER FOOT (METER) FOR "CURB REMOVAL AND REPLACEMENT" OR "COMBINATION CONCRETE CURB AND GUTTER REMOVAL AND REPLACEMENT".

CURB OR CURB AND GUTTER REMOVAL AND REPLACEMENT

ALL DIMENSIONS ARE IN INCHES (MILLIMETERS) UNLESS OTHERWISE SHOWN.

MODEL: Default
FILE NAME: p:\pub\mcomon.dwt\illinois.gov\PWIDOT\Documents\DOT_Offices\District 1\Projects\143220\CADD\Design\Design\BDS54.dgn

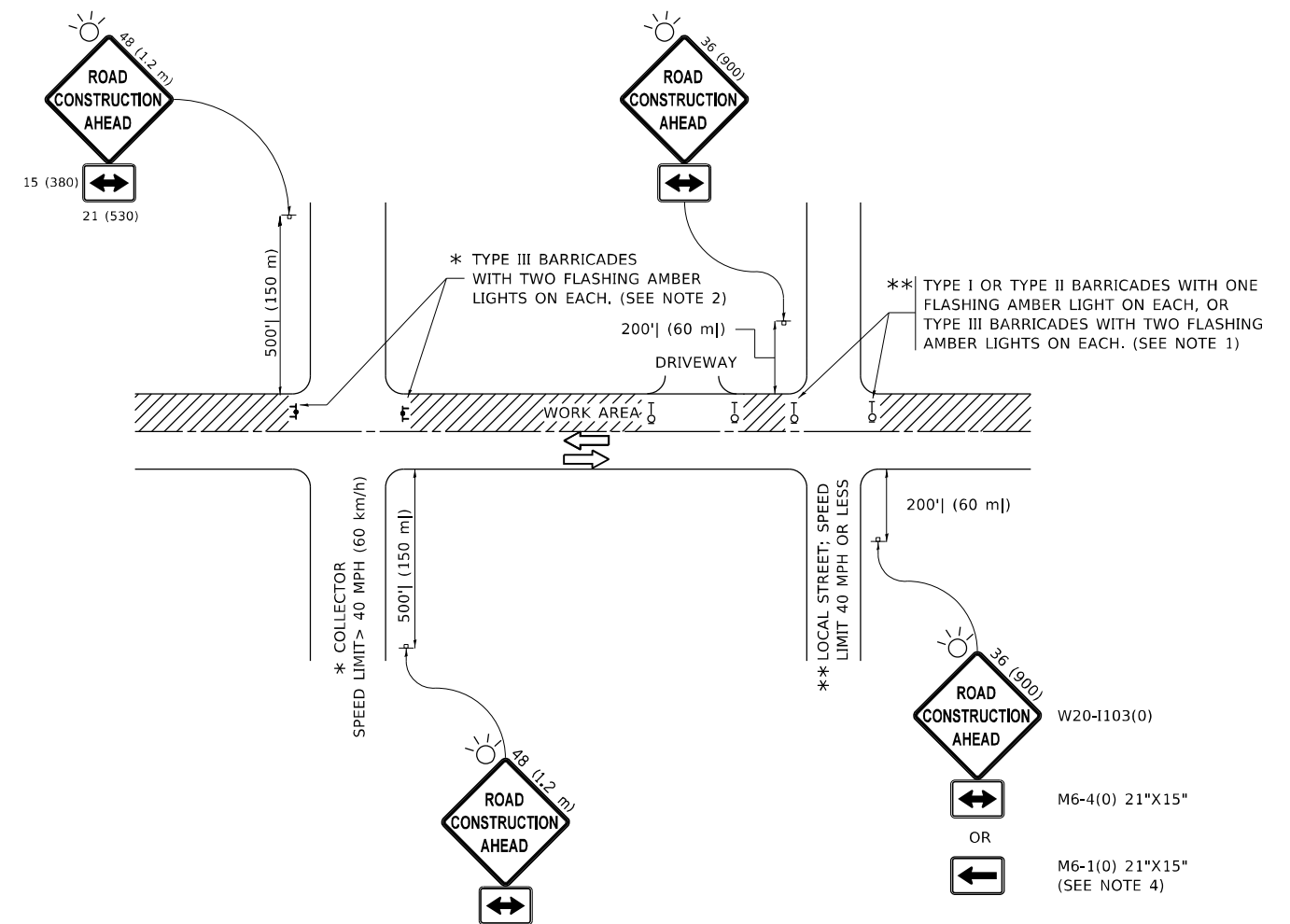
USER NAME = rostkowsdir	DESIGNED - A. HOUSEH	REVISED - R. SHAH 10-03-96
	DRAWN -	REVISED - A. ABBAS 03-21-97
PLOT SCALE = 100,0000' / in.	CHECKED -	REVISED - M. GOMEZ 01-22-01
PLOT DATE = 3/19/2021	DATE - 03-11-94	REVISED - R. BORO 12-15-09

STATE OF ILLINOIS
DEPARTMENT OF TRANSPORTATION

CURB OR CURB AND GUTTER
REMOVAL AND REPLACEMENT

SCALE: NONE SHEET 1 OF 1 SHEETS STA. TO STA.

F.A.U. RTE.	SECTION	COUNTY	TOTAL SHEETS	SHEET NO.
3727/DEMPSTER ST	2020-049-R5&SW	COOK	27	20
BD600-06 (BD-24)		CONTRACT NO. 62L21		
ILLINOIS FED. AID PROJECT				



NOTES:

1. SIDE ROAD WITH A SPEED LIMIT OF 40 MPH (60 km/h) OR LESS AS SHOWN ON THE DRAWING AND AS DIRECTED BY THE ENGINEER:
 - a) ONE "ROAD CONSTRUCTION AHEAD" SIGN 36 x 36 (900x900) WITH A FLASHER MOUNTED ON IT APPROXIMATELY 200' (60 m) IN ADVANCE OF THE MAIN ROUTE.
 - b) THE CLOSED PORTION OF THE MAIN ROUTE SHALL BE PROTECTED BY BLOCKING WITH TYPE I, TYPE II OR TYPE III BARRICADES, 1/3 OF THE CROSS SECTION OF THE CLOSED PORTION.
2. SIDE ROAD WITH A SPEED LIMIT GREATER THAN 40 MPH (60 km/h) AS SHOWN ON THE DRAWING AND AS DIRECTED BY THE ENGINEER:
 - a) ONE "ROAD CONSTRUCTION AHEAD" SIGN 48 x 48 (1.2 m x 1.2 m) WITH A FLASHER MOUNTED ON IT APPROXIMATELY 500' (150 m) IN ADVANCE OF THE MAIN ROUTE.
 - b) BLOCKING WITH TYPE III BARRICADES, 1/2 OF THE CROSS SECTION OF THE CLOSED PORTION.
3. CONES MAY BE SUBSTITUTED FOR BARRICADES OR DRUMS AT HALF THE SPACING DURING DAY OPERATIONS. CONES SHALL BE A MINIMUM OF 28 (710) IN HEIGHT.
4. SIGNING AND THE WORK ZONE, A SINGLE HEADED ARROW (M6-1) SHALL BE USED IN LIEU OF THE DOUBLE HEADED ARROW (M6-4).
5. WHEN WORK IS BEING PERFORMED ON A SIDE ROAD OR DRIVEWAY, FOLLOW THE APPLICABLE STANDARD(S). THE DIRECTIONAL ARROW (M6-1 OR M6-4) SHALL BE COVERED OR REMOVED WHEN NO LONGER CONSISTENT WITH THE TRAFFIC CONTROL SET-UP.
6. ADVANCE WARNING SIGNS ARE TO BE OMITTED ON DRIVEWAYS UNLESS OTHERWISE SPECIFIED IN THE PLANS OR BY THE ENGINEER.
7. THE TRAFFIC CONTROL AND PROTECTION FOR SIDE ROADS, INTERSECTIONS, AND DRIVEWAYS SHALL BE INCLUDED IN THE COST OF SPECIFIED TRAFFIC CONTROL STANDARDS OR ITEMS.

All dimensions are in inches (millimeters) unless otherwise shown.

MODEL: Default
 FILE NAME: p:\m\m\room.dwg
 PROJECT: 300-PWIDOT-Data\Documents\DOT_Office\Drawings\1\Project\143220\CADDData\Design\DIS54.dwg

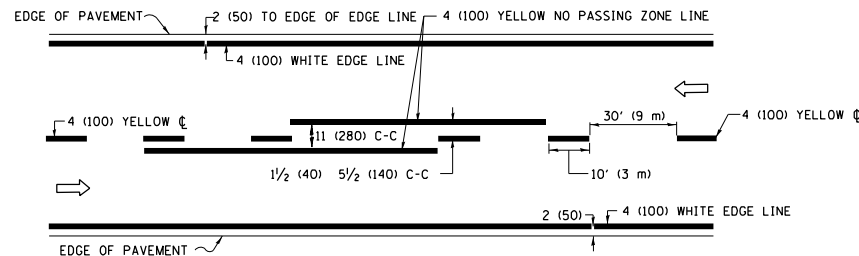
USER NAME = rostkowsdr	DESIGNED - L.H.A.	REVISED - A. HOUSEH 10-15-96
PLOT SCALE = 100,0000' / in.	CHECKED -	REVISED - T. RAMMACHER 01-06-00
PLOT DATE = 3/19/2021	DATE - 06-89	REVISED - A. SCHUETZE 07-01-13
		REVISED - A. SCHUETZE 09-15-16

**STATE OF ILLINOIS
DEPARTMENT OF TRANSPORTATION**

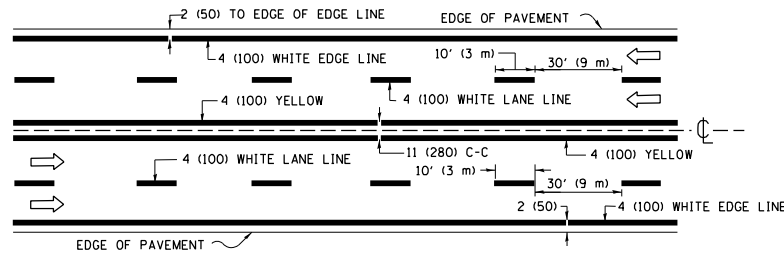
**TRAFFIC CONTROL AND PROTECTION FOR
SIDE ROADS, INTERSECTIONS, AND DRIVEWAYS**

SCALE: NONE SHEET 1 OF 1 SHEETS STA. TO STA.

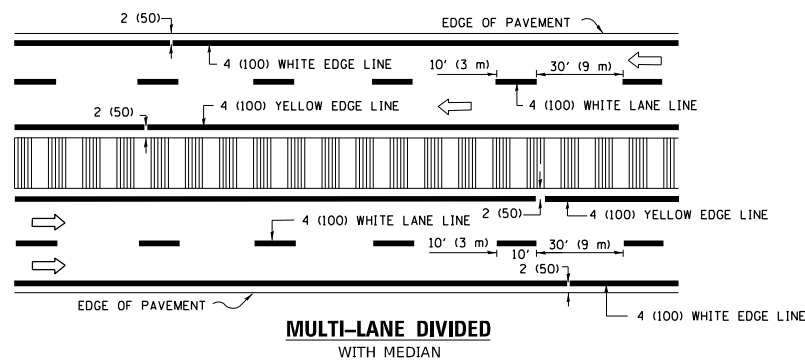
F.A.U. RTE.	SECTION	COUNTY	TOTAL SHEETS	SHEET NO.
3727/DEMPSTER ST	2020-049-R5&SW	COOK	27	22
TC-10			CONTRACT NO. 62L21	
ILLINOIS FED. AID PROJECT				



2-LANE ROADWAY

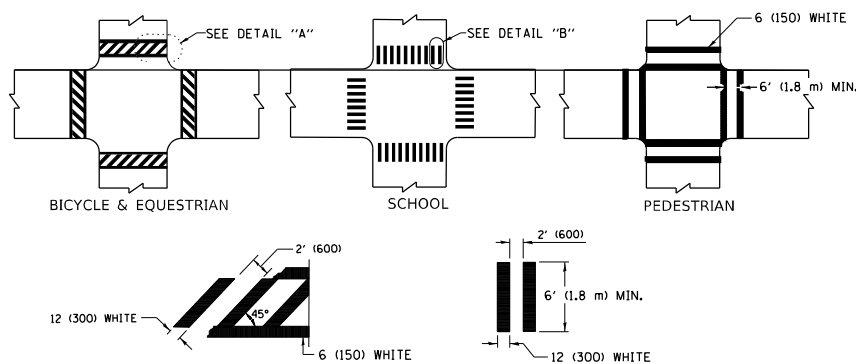


MULTI-LANE UNDIVIDED



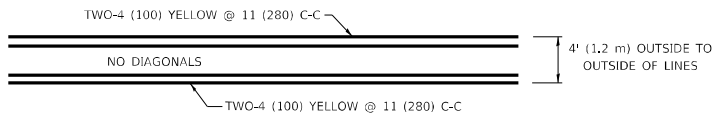
MULTI-LANE DIVIDED WITH MEDIAN

TYPICAL LANE AND EDGE LINE MARKING

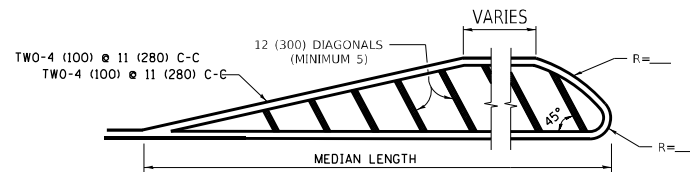


TYPICAL CROSSWALK MARKING

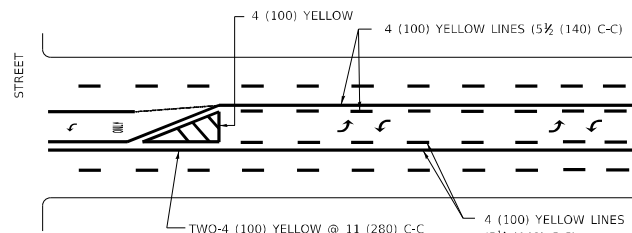
* MARKINGS SHALL BE INSTALLED PARALLEL TO THE CENTERLINE OF THE ROAD WHICH IT CROSSES



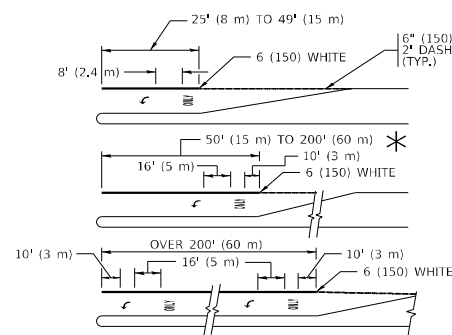
4' (1.2 m) WIDE MEDIANS ONLY



MEDIANS OVER 4' (1.2 m) WIDE



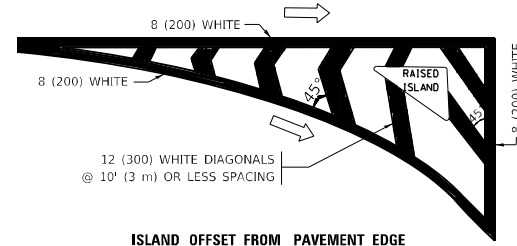
MEDIAN WITH TWO-WAY LEFT TURN LANE TYPICAL PAINTED MEDIAN MARKING



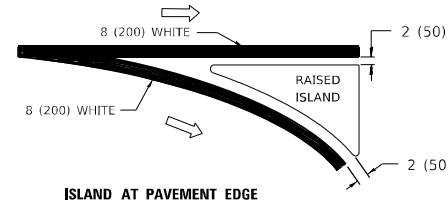
TYPICAL LEFT (OR RIGHT) TURN LANE

TYPICAL TURN LANE MARKING

FULL SIZE LETTERS 8" (2.4 m) AND ARROWS SHALL BE USED.
 * AREA = 15.6 SQ. FT. (1.5 m²) ONLY AREA = 20.8 SQ. FT. (1.9 m²)
 * TURN LANES IN EXCESS OF 400' (120 m) IN LENGTH MAY HAVE AN ADDITIONAL SET OF ARROW - "ONLY" INSTALLED MIDWAY BETWEEN THE OTHER TWO SETS OF ARROW - "ONLY".

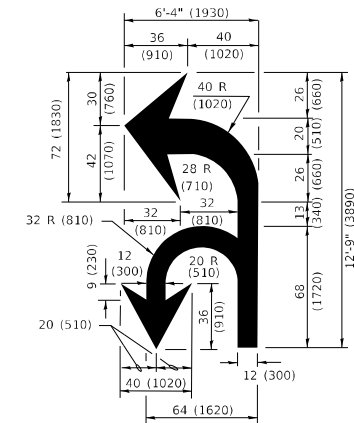


ISLAND OFFSET FROM PAVEMENT EDGE

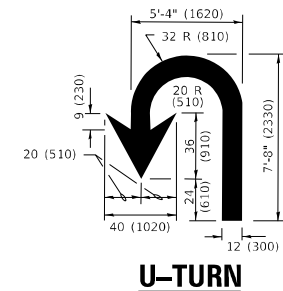


ISLAND AT PAVEMENT EDGE

TYPICAL ISLAND MARKING



COMBINATION LEFT AND U-TURN



U-TURN

LANE REDUCTION TRANSITION

* LANE REDUCTION ARROWS REQUIRED AT SPEEDS OF 45 MPH OR GREATER OR WHEN SPECIFIED IN PLANS.

D(FT)	SPEED LIMIT
345	30
425	35
500	40
580	45
665	50
750	55

TYPE OF MARKING	WIDTH OF LINE	PATTERN	COLOR	SPACING / REMARKS
CENTERLINE ON 2 LANE PAVEMENT	4 (100)	SKIP-DASH	YELLOW	10' (3 m) LINE WITH 30' (9 m) SPACE
CENTERLINE ON MULTI-LANE UNDIVIDED PAVEMENT	2 @ 4 (100)	SOLID	YELLOW	11 (280) C-C
NO PASSING ZONE LINES: FOR ONE DIRECTION FOR BOTH DIRECTIONS	4 (100) 2 @ 4 (100)	SOLID SOLID	YELLOW YELLOW	5 1/2 (140) C-C FROM SKIP-DASH CENTERLINE 11 (280) C-C OMIT SKIP-DASH CENTERLINE BETWEEN
LANE LINES	4 (100) 5 (125) ON FREEWAYS	SKIP-DASH SKIP-DASH	WHITE WHITE	10' (3 m) LINE WITH 30' (9 m) SPACE
DOTTED LINES (EXTENSIONS OF CENTER, LANE OR TURN LANE MARKINGS)	SAME AS LINE BEING EXTENDED	SKIP-DASH	SAME AS LINE BEING EXTENDED	2' (600) LINE WITH 6' (1.8 m) SPACE
EDGE LINES	4 (100)	SOLID	YELLOW-LEFT WHITE-RIGHT	OUTLINE MEDIANS IN YELLOW
TURN LANE MARKINGS	6 (150) LINE; FULL SIZE LETTERS & SYMBOLS (8" (2.4m))	SOLID	WHITE	SEE TYPICAL TURN LANE MARKING DETAIL
TWO WAY LEFT TURN MARKING	2 @ 4 (100) EACH DIRECTION 8' (2.4m) LEFT ARROW	SKIP-DASH AND SOLID IN PAIRS	YELLOW WHITE	10' (3 m) LINE WITH 30' (9 m) SPACE FOR SKIP-DASH; 5 1/2 (140) C-C BETWEEN SOLID LINE AND SKIP-DASH LINE SEE TYPICAL TWO-WAY LEFT TURN MARKING DETAIL
CROSSWALK LINES (PEDESTRIAN) A. DIAGONALS (BIKE & EQUESTRIAN) B. LONGITUDINAL BARS (SCHOOL)	2 @ 6 (150) 12 (300) @ 45° 12 (300) @ 90°	SOLID SOLID SOLID	WHITE WHITE WHITE	NOT LESS THAN 6' (1.8 m) APART 2' (600) APART SEE TYPICAL CROSSWALK MARKING DETAILS.
STOP LINES	24 (600)	SOLID	WHITE	PLACE 4' (1.2 m) IN ADVANCE OF AND PARALLEL TO CROSSWALK, IF PRESENT. OTHERWISE, PLACE AT DESIRED STOPPING POINT. PARALLEL TO CROSSROAD CENTERLINE, WHERE POSSIBLE
PAINTED MEDIANS	2 @ 4 (100) WITH 12 (300) DIAGONALS @ 45° NO DIAGONALS USED FOR 4' (1.2 m) WIDE MEDIANS	SOLID	YELLOW: TWO WAY TRAFFIC WHITE: ONE WAY TRAFFIC	11 (280) C-C FOR THE DOUBLE LINE SEE TYPICAL PAINTED MEDIAN MARKING.
GORE MARKING AND CHANNELIZING LINES	8 (200) WITH 12 (300) DIAGONALS @ 45°	SOLID	WHITE	DIAGONALS: 15' (4.5 m) C-C (LESS THAN 30MPH (50 km/h)) 20' (6 m) C-C 30MPH (50 km/h) TO 45MPH (70 km/h) 30' (9 m) C-C (OVER 45MPH (70 km/h))
RAILROAD CROSSING	24 (600) TRANSVERSE LINES "RR" IS 6' (1.8 m) LETTERS: 16 (400) LINE FOR "X"	SOLID	WHITE	SEE STATE STANDARD 780001 AREA OF: "R"=3.6 SQ. FT. (0.33 m ²) EACH "X"=54.0 SQ. FT. (5.0 m ²)
SHOULDER DIAGONALS (REQUIRED FOR SHOULDERS > 8')	12 (300) @ 45°	SOLID	WHITE - RIGHT YELLOW - LEFT	50' (15 m) C-C (LESS THAN 30MPH (50 km/h)) 75' (22.5 m) C-C (30 MPH (50 km/h) TO 45MPH (70 km/h)) 150' (45 m) C-C (OVER 45MPH (70 km/h))
U TURN ARROW	SEE DETAIL	SOLID	WHITE	16.3 SF
2 ARROW COMBINATION LEFT AND U TURN	SEE DETAIL	SOLID	WHITE	30.4 SF

FOR FURTHER DETAILS ON PAVEMENT MARKING REFER TO STANDARD SPECIFICATIONS FOR ROAD AND BRIDGE CONSTRUCTION AND STATE STANDARD 780001.

All dimensions are in inches (millimeters) unless otherwise shown.

MODEL: Default FILE NAME: p:\pub\marmoon.edu\illinois.gov\PWIDOT\Documents\DOT Office\Drawings\1\Projects\143220\CADD\Drawings\Design\DS156.dwg

USER NAME = rostkowski	DESIGNED - EVERS	REVISED - C. JUCIUS 09-09-09
DRAWN -	REVISOR - C. JUCIUS 07-01-13	
PLOT SCALE = 100,0000' / in.	CHECKED -	REVISED - C. JUCIUS 12-21-15
PLOT DATE = 3/19/2021	DATE - 03-19-20	REVISED - C. JUCIUS 04-12-16

**STATE OF ILLINOIS
DEPARTMENT OF TRANSPORTATION**

**DISTRICT ONE
TYPICAL PAVEMENT MARKINGS**

SCALE: NONE SHEET 1 OF 2 SHEETS STA. TO STA.

F.A.U. RTE.	SECTION	COUNTY	TOTAL SHEETS	SHEET NO.
3727/DEMPSTER ST	2020-049-R5&SW	COOK	27	24
TC-13			CONTRACT NO. 62L21	
ILLINOIS		FED. AID PROJECT		

TURN BAY ENTRANCE AT START OF LANE CLOSURE TAPER

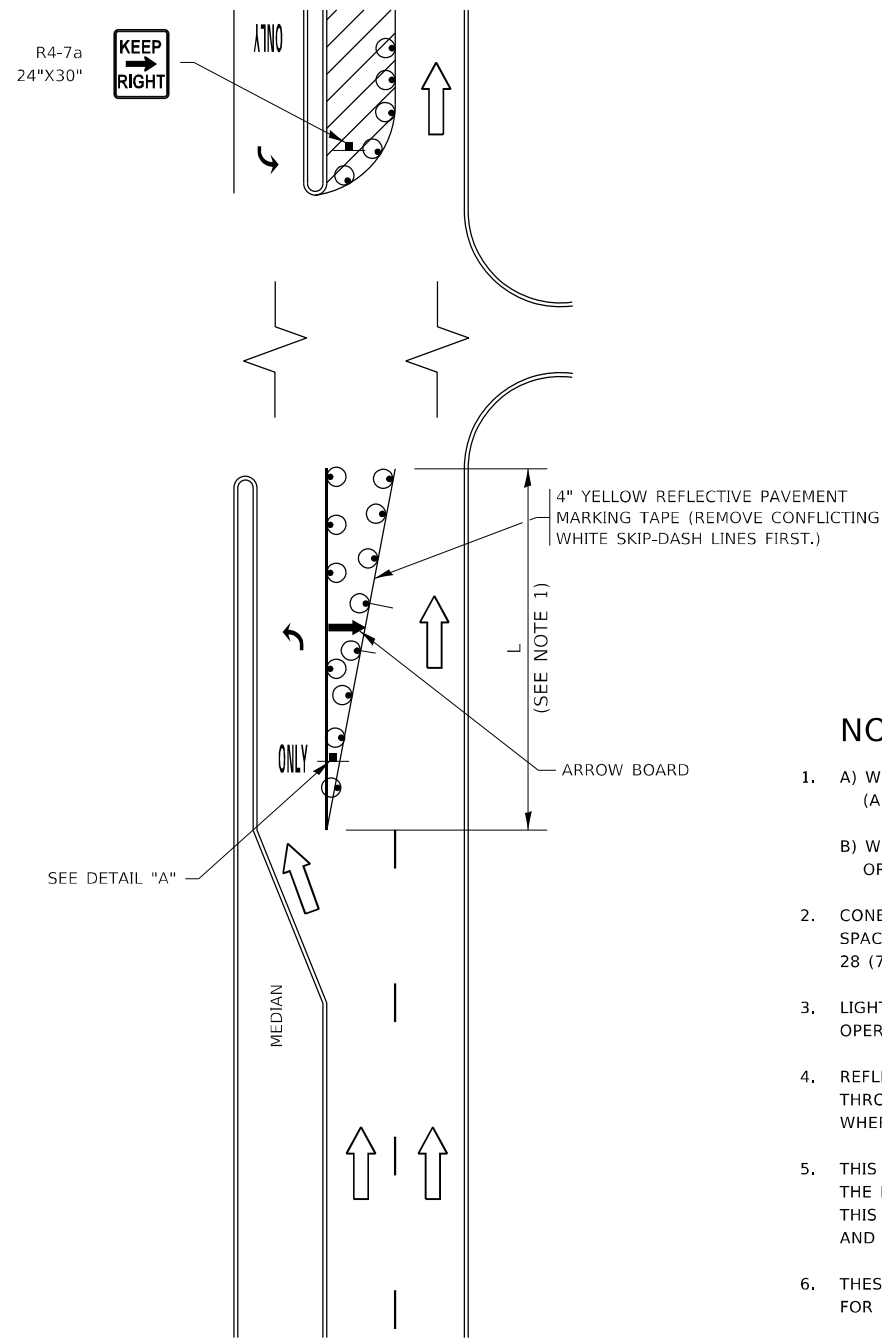


FIGURE 1

TURN BAY ENTRANCE WITHIN A LANE CLOSURE

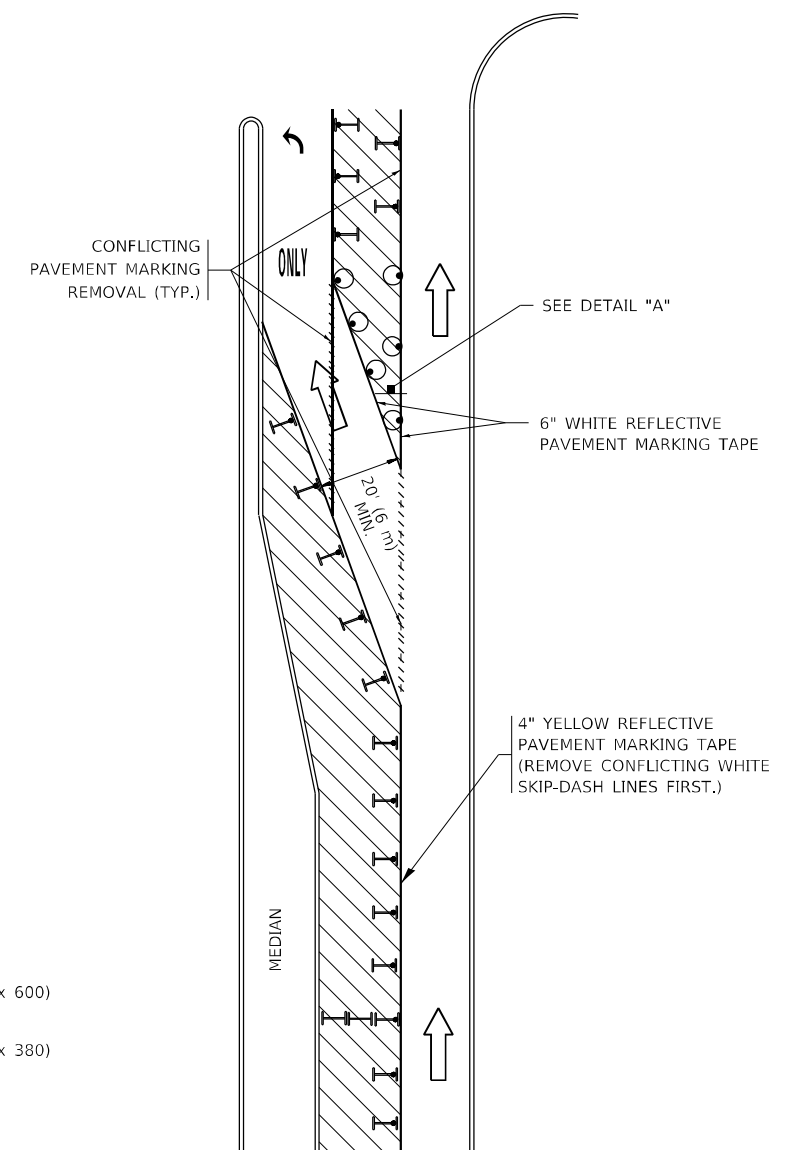


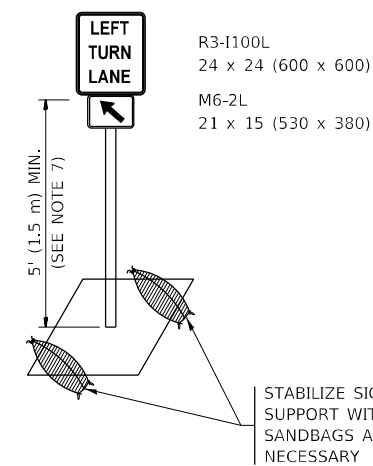
FIGURE 2

LEGEND

- WORK AREA
- LANE OPEN TO TRAFFIC
- ARROW BOARD
- TYPE I OR II BARRICADE OR DRUM WITH STEADY BURN LIGHT
- DRUM WITH STEADY BURN LIGHT
- SIGN ASSEMBLY
- TYPE I OR II CHECK BARRICADE WITH FLASHING LIGHT

NOTES:

1. A) WHEN "L" IS \leq THE STORAGE LENGTH OF THE TURN LANE (AS SHOWN IN FIG. 1), USE FIGURE 1.
B) WHEN "L" IS $>$ THE STORAGE LENGTH OF THE TURN LANE OR THE TURN LANE IS WITHIN THE LANE CLOSURE, USE FIGURE 2.
2. CONES MAY BE SUBSTITUTED FOR BARRICADES OR DRUMS AT HALF THE SPACING DURING DAY OPERATIONS. CONES SHALL BE A MINIMUM OF 28 (710) IN HEIGHT.
3. LIGHTS WILL NOT BE REQUIRED ON BARRICADES OR DRUMS FOR DAY OPERATIONS. ALL LIGHTS SHALL BE MONODIRECTIONAL.
4. REFLECTIVE TEMPORARY PAVEMENT MARKINGS SHALL BE PLACED THROUGHOUT THE BARRICADED AREAS OF EACH TURN BAY AS SHOWN WHERE THE CLOSURE TIME IS GREATER THAN FOURTEEN (14) DAYS.
5. THIS APPLICATION ALSO APPLIES WHEN WORK IS BEING PERFORMED IN THE RIGHT LANE(S) AND THE RIGHT TURN BAY IS TO REMAIN OPEN. UNDER THIS CONDITION, "RIGHT TURN LANE" R3-1100R 24 x 24 (600 x 600) AND M6-2R 21 x 15 (530 x 380) SHALL BE USED.
6. THESE CONTROLS SHALL SUPPLEMENT MAINLINE TRAFFIC CONTROL FOR LANE CLOSURES.
7. THE SIGNS SHALL BE MOUNTED ABOVE THE BARRICADES/DRUMS ON SEPARATE SIGN SUPPORTS THAT MEET NCHRP 350 OR MASH REQUIREMENTS.
8. TRAFFIC CONTROL AND PROTECTION AT TURN BAYS (TO REMAIN OPEN TO TRAFFIC) SHALL BE INCLUDED IN THE COST OF SPECIFIED TRAFFIC CONTROL STANDARDS OR ITEMS.



DETAIL A

All dimensions are in inches (millimeters) unless otherwise shown.

MODEL: Default
FILE NAME: p:\pub\amr\amr.dwg
PROJECT: 143220\CADDData\Design\DIS5.dgn

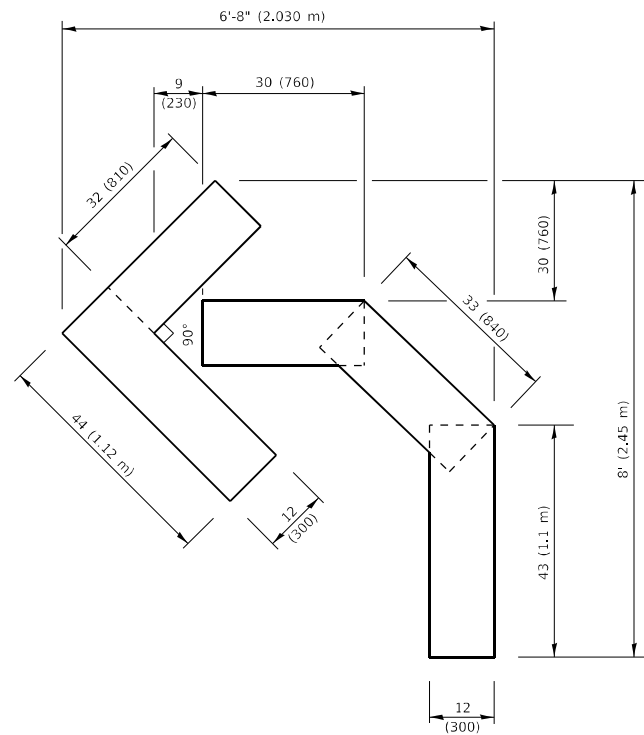
USER NAME = rostkowsdr	DESIGNED - T. RAMMACHER 09-08-94	REVISED - R. BORO 09-14-09
	DRAWN - A. HOUSEH 11-07-95	REVISED - A. SCHUETZE 07-01-13
PLOT SCALE = 100,0000' / in.	CHECKED - A. HOUSEH 10-12-96	REVISED - A. SCHUETZE 09-15-16
PLOT DATE = 3/19/2021	DATE - T. RAMMACHER 01-06-00	REVISED -

**STATE OF ILLINOIS
DEPARTMENT OF TRANSPORTATION**

**TRAFFIC CONTROL AND PROTECTION AT TURN BAYS
(TO REMAIN OPEN TO TRAFFIC)**

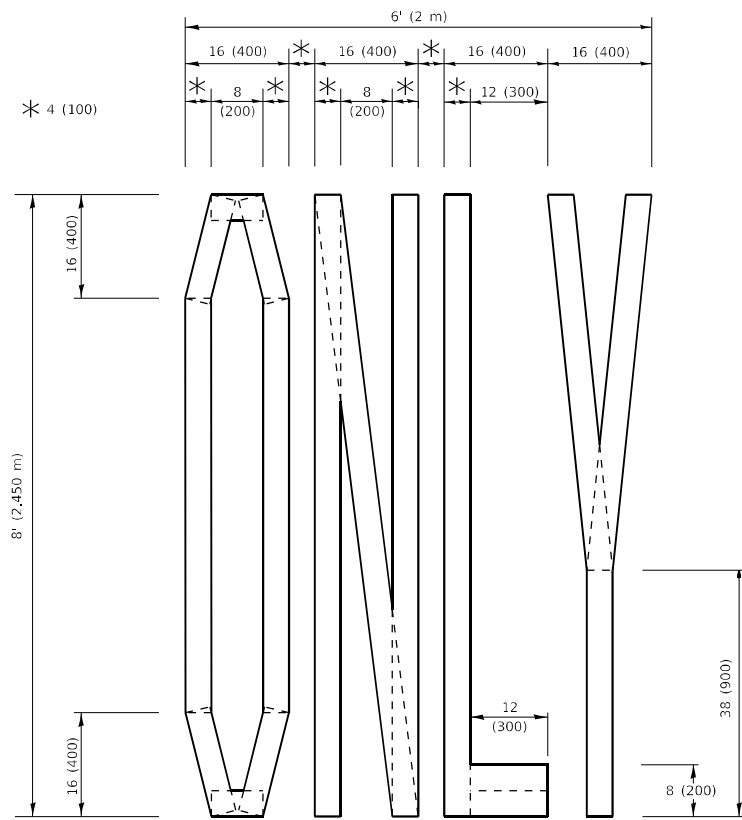
SCALE: NONE SHEET 1 OF 1 SHEETS STA. TO STA.

F.A.U. RTE.	SECTION	COUNTY	TOTAL SHEETS	SHEET NO.
3727/DEMPSTER ST	2020-049-R5&SW	COOK	27	25
TC-14		CONTRACT NO. 62L21		
ILLINOIS FED. AID PROJECT				



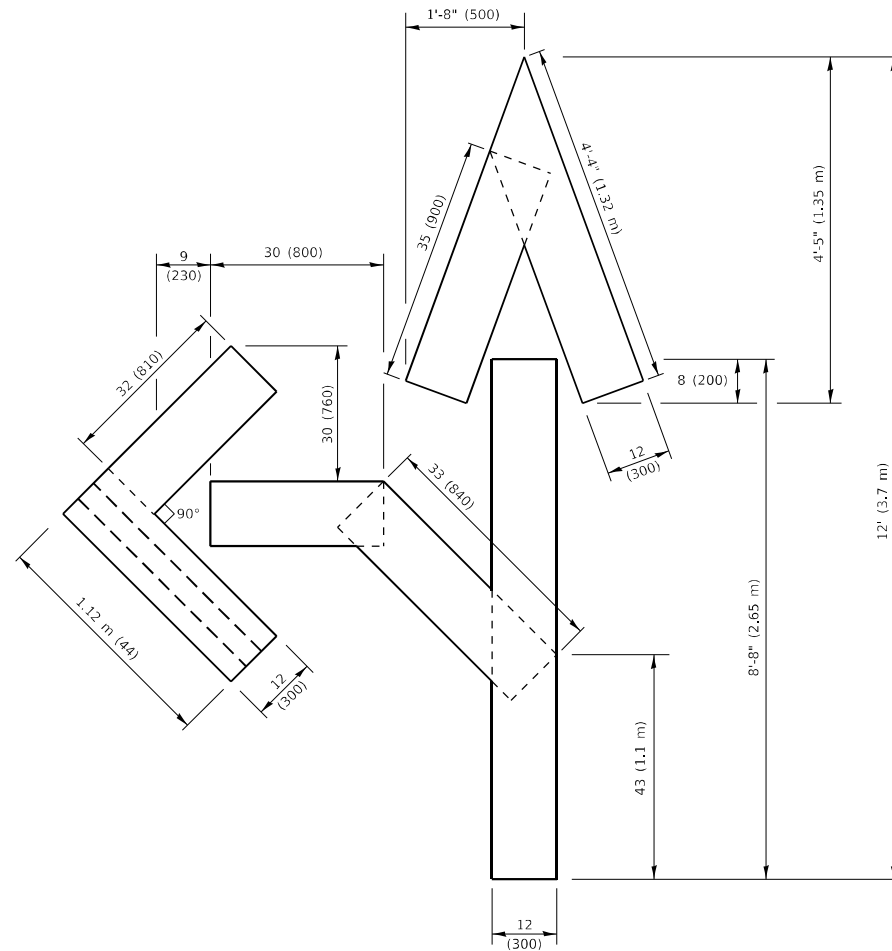
QUANTITY

4 (100) LINE = 45.5 ft. (13.9 m)
15.2 sq. ft. (1.41 sq. m)



QUANTITY

4 (100) LINE = 64.1 ft. (19.5 m)
21.4 sq. ft. (1.99 sq. m)

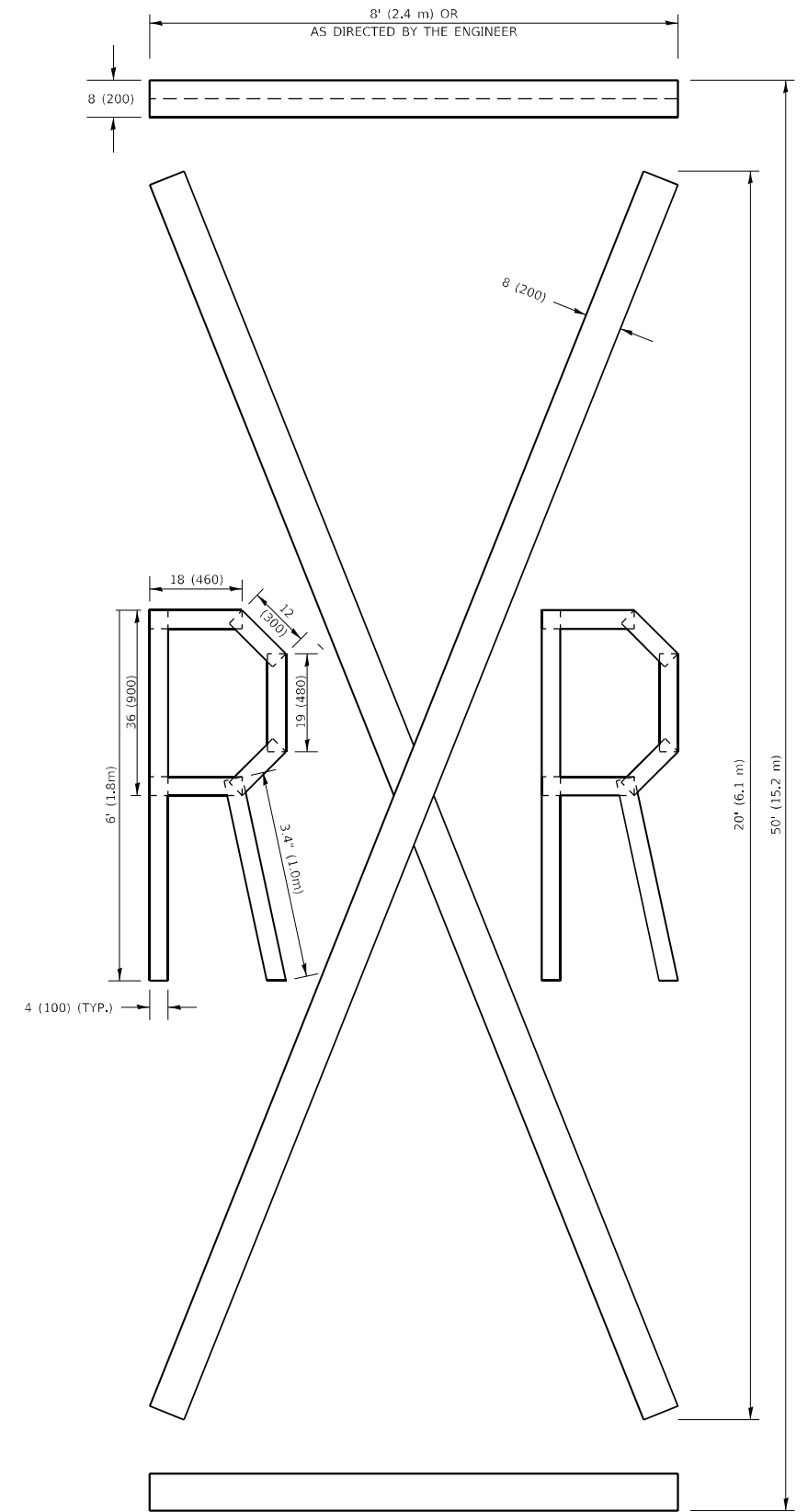


QUANTITY

4 (100) LINE = 82.5 ft. (25.1 m)
27.5 sq. ft. (2.53 sq. m)

NOTE:

ALL QUANTITIES OF PLACEMENT ARE REPRESENTED IN LINEAR FEET OF 4" LINES TO MATCH THE 4" TEMPORARY TAPE PAY ITEM AND REPRESENTS THE TOTAL QUANTITY OF 4" TAPE REQUIRED.



QUANTITY

4 (100) LINE = 225.9 ft. (68.9 m)
75.3 sq. ft. (6.99 sq. m)

All dimensions are in inches (millimeters) unless otherwise shown.

MODEL: Default
FILE NAME: p:\pub\pavement\pavement.dwg
PROJECT: 143220\CADD\Design\Design\143220.dwg

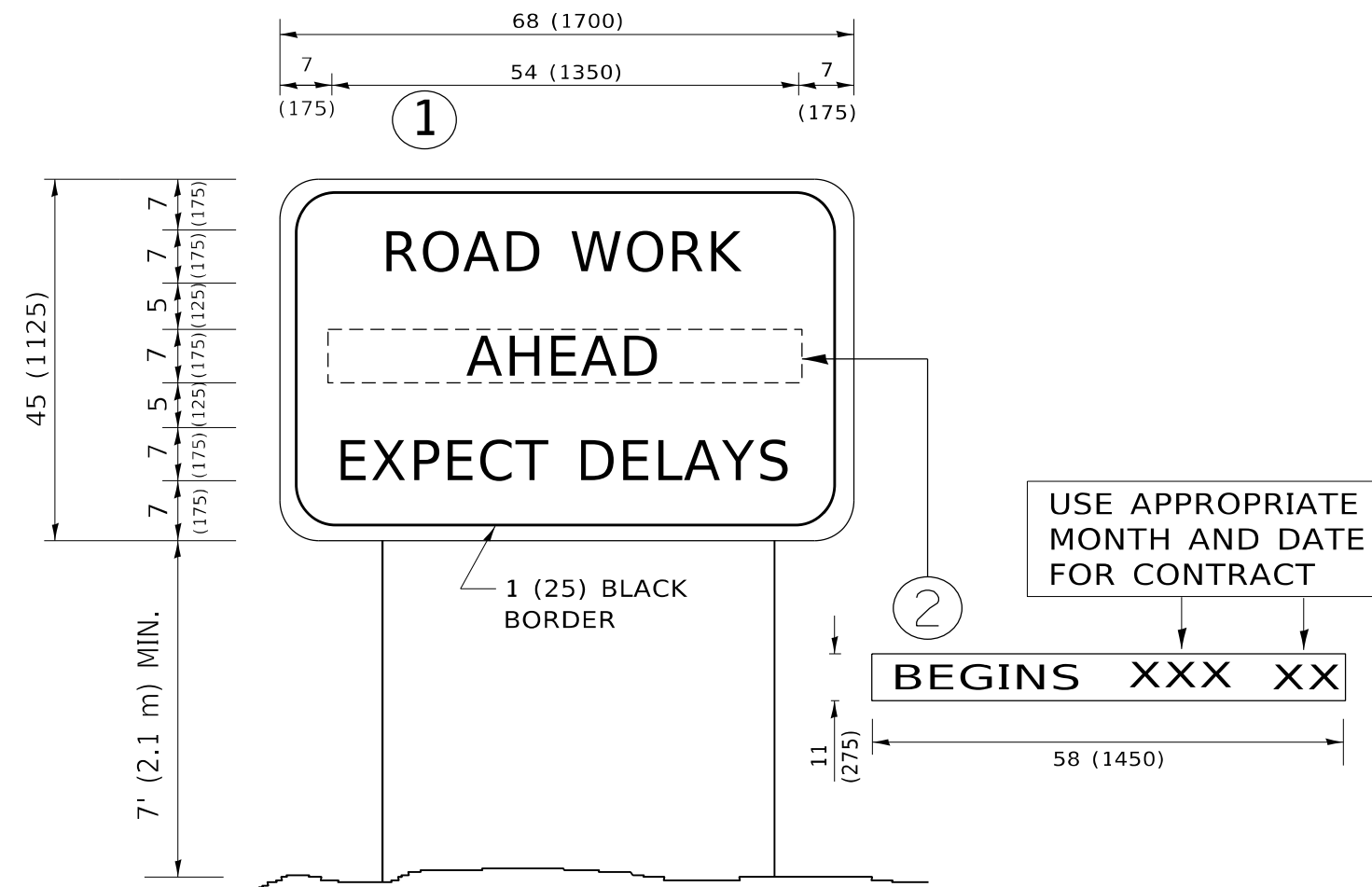
USER NAME = rostkowski	DESIGNED -	REVISED - T. RAMMACHER 03-02-98
	DRAWN -	REVISED - E. GOMEZ 08-28-00
PLOT SCALE = 100,0000' / in.	CHECKED -	REVISED - E. GOMEZ 08-28-00
PLOT DATE = 3/19/2021	DATE - 09-18-94	REVISED - A. SCHUETZE 09-15-16

**STATE OF ILLINOIS
DEPARTMENT OF TRANSPORTATION**

SHORT TERM PAVEMENT MARKING LETTERS AND SYMBOLS

SCALE: NONE SHEET 1 OF 1 SHEETS STA. TO STA.

F.A.U. RTE.	SECTION	COUNTY	TOTAL SHEETS	SHEET NO.
3727/DEMPSTER ST	2020-049-R5&SW	COOK	27	26
TC-16		CONTRACT NO. 62L21		
ILLINOIS		FED. AID PROJECT		



NOTES:

1. USE BLACK LETTERING ON ORANGE BACKGROUND.
2. ERECT SIGNS IN ADVANCE OF THE LOCATION FOR THE "ROAD CONSTRUCTION AHEAD" SIGN AT LOCATIONS AS DIRECTED BY THE ENGINEER.
3. ERECT SIGN ① WITH INSTALLED PANEL ② ONE WEEK PRIOR TO THE START OF CONSTRUCTION.
4. REMOVE PANEL ② SOON AFTER THE START OF CONSTRUCTION.
5. SEE SPECIAL PROVISION FOR "TEMPORARY INFORMATION SIGNING" FOR ADDITIONAL INFORMATION.
6. ONE SIGN ASSEMBLY EQUALS 25.70 SQ. FT. (2.3 SQ. M.)
7. SHALL BE PAID FOR AS TEMPORARY INFORMATION SIGNING.

ALL DIMENSIONS ARE IN INCHES (MILLIMETERS) UNLESS OTHERWISE SHOWN.

MODEL: Default
 FILE NAME: p:\pub\mroom.dwg
 PROJECT: 2020-049-R5&SW
 PROJECT DATE: 3/19/2021
 PROJECT LOCATION: 3727/DEMPSTER ST
 PROJECT CONTRACT NO.: 62L21

USER NAME = rostkowsdr	DESIGNED -	REVISED - R. MIRS 09-15-97
	DRAWN -	REVISED - R. MIRS 12-11-97
PLOT SCALE = 100,0000 ' / in.	CHECKED -	REVISED - T. RAMMACHER 02-02-99
PLOT DATE = 3/19/2021	DATE -	REVISED - C. JUCIUS 01-31-07

**STATE OF ILLINOIS
DEPARTMENT OF TRANSPORTATION**

**ARTERIAL ROAD
INFORMATION SIGN**

SCALE: NONE SHEET 1 OF 1 SHEETS STA. TO STA.

F.A.U. RTE.	SECTION	COUNTY	TOTAL SHEETS	SHEET NO.
3727/DEMPSTER ST	2020-049-R5&SW	COOK	27	27
TC-22			CONTRACT NO. 62L21	
ILLINOIS		FED. AID PROJECT		