

SUMMARY OF QUANTITIES			URBAN TOTAL QUANTITIES		CONSTRUCTION TYPE CODE			
CODE NO	ITEM	UNIT	80% FED 20% STATE	100% STATE				
40600290	BITUMINOUS MATERIALS (TACK COAT)	POUND	9730 <del>11650</del>	9730 <del>11650</del>				
25200110	SODDING SALT TOLERANT	SQ YD	230	230				
40600400	MIXTURE FOR CRACKS, JOINTS, AND FLANGWAYS	TON	39	39				
21101615	TOPSOIL FURNISH AND PLACE, 4"	SQ YD	230	230				
40600982	HOT-MIX ASPHALT SURFACE REMOVAL - BUTT JOINT	SO YD	480	480				
40601005	HOT-MIX ASPHALT REPLACEMENT OVER PATCHES	TON	37	37				
40604172	POLYMERIZED HOT-MIX ASPHALT SURFACE COURSE, IL-9.5, MIX "E", N70	TON	2130 <del>2548</del>	2130 <del>2548</del>				
42001300	PROTECTIVE COAT	SO YD	135	135				
42300400	PCC DRIVEWAY PAVEMENT, 8 INCH	SQ YD	98	98				
42400200	PORTLAND CEMENT CONCRETE SIDEWALK 5 INCH	SO FT	600 <del>3310</del>	600 <del>3310</del>				
44000156	HOT-MIX ASPHALT SURFACE REMOVAL, 1 3/4"	SO YD	21733 <del>26000</del>	21733 <del>26000</del>				
44000200	DRIVEWAY PAVEMENT REMOVAL	SQ YD	98	98				
44000600	SIDEWALK REMOVAL	SO FT	600 <del>3310</del>	600 <del>3310</del>				
44002216	HOT-MIX ASPHALT REMOVAL OVER PATCHES, 4"	SO YD	165	165				
44201765	CLASS D PATCHES, TYPE II, 10 INCH	SO YD	20 <del>357</del>	20 <del>357</del>				
48101620	AGGREGATE SHOULDERS, TYPE B 10"	SQ YD	250	250				
44201769	CLASS D PATCHES, TYPE III, 10 INCH	SO YD	40 <del>345</del>	40 <del>345</del>				

SUMMARY OF QUANTITIES			URBAN TOTAL QUANTITIES		CONSTRUCTION TYPE CODE			
CODE NO	ITEM	UNIT	80% FED 20% STATE	100% STATE				
44201771	CLASS D PATCHES, TYPE IV, 10 INCH	SO YD	80 <del>567</del>	80 <del>567</del>				
60252800	CATCH BASINS TO BE RECONSTRUCTED	EACH	3	3				
60300305	FRAMES AND LIDS TO BE ADJUSTED	EACH	60 <del>21</del>	60 <del>21</del>				
60266600	VALVE BOXES TO BE ADJUSTED	EACH	6	6				
67000400	ENGINEER'S FIELD OFFICE, TYPE A	CAL MO	6	6				
60406000	FRAMES AND LIDS, TYPE 1, OPEN LID	EACH	11	11				
67100100	MOBILIZATION	L SUM	1	1				
60406530	FRAMES AND LIDS, CLOSED LID(CITY OF CHICAGO)	EACH	35	35				
70102625	TRAFFIC CONTROL AND PROTECTION, STANDARD 701606	L SUM	1	1				
60262700	INLETS TO BE RECONSTRUCTED	EACH	3	3				
70102632	TRAFFIC CONTROL AND PROTECTION, STANDARD 701602	L SUM	1	1				
63100167	TRAFFIC BARRIER TERMINAL, TYPE 1(SPECIAL) TANGENT	EACH	2	2				
70102634	TRAFFIC CONTROL AND PROTECTION, STANDARD 701611	L SUM	1	1				
63200310	GUARDRAIL REMOVAL	FOOT	55	55				
70102635	TRAFFIC CONTROL AND PROTECTION, STANDARD 701701	L SUM	1	1				
70102640	TRAFFIC CONTROL AND PROTECTION, STANDARD 701801	L SUM	1	1				
70300100	SHORT TERM PAVEMENT MARKING	FOOT	3800	3800				
70300150	SHORT TERM PAVEMENT MARKING REMOVAL	SO FT	1270	1270				
70300210	TEMPORARY PAVEMENT MARKING LETTERS AND SYMBOLS	SO FT	173.5 <del>246.7</del>	173.5 <del>246.7</del>				
70300220	TEMPORARY PAVEMENT MARKING - LINE 4"	FOOT	4900 <del>6000</del>	4900 <del>6000</del>				

FILE NAME =	USER NAME = gulliamerfp	DESIGNED -	REVISED - 5/21/2021 FG
pw:\planroom\dtd\illinois\gov\PI\DOT\Documents\VDOT	Files\District\Projects\DI48420\CADD\Design\DI48420-3	DRAWN -	REVISED -
	PLOT SCALE = 100,0000' / in.	CHECKED -	REVISED -
	PLOT DATE = 3/19/2021	DATE -	REVISED -

**STATE OF ILLINOIS  
DEPARTMENT OF TRANSPORTATION**

**US 41/FOSTER AVE. (ASHLAND AVE. TO US 41(LAKE SHORE DR.))  
SUMMARY OF QUANTITIES**

F.A.U. R.E.	SECTION	COUNTY	TOTAL SHEETS	SHEET NO.
1360	2020-085-R5	COOK	19	3
CONTRACT NO. 62L63				
FED. ROAD DIST. NO. 1   ILLINOIS   FED. AID PROJECT				

1 REVISED SHEET 5/24/201

SUMMARY OF QUANTITIES			CONSTRUCTION TYPE CODE			
CODE NO	ITEM	UNIT	URBAN TOTAL QUANTITIES	0005 80% FED 20% STATE	0005 100% STATE	
70300240	TEMPORARY PAVEMENT MARKING - LINE 6"	FOOT	440 <del>550</del>	440 <del>550</del>		
70300260	TEMPORARY PAVEMENT MARKING - LINE 12"	FOOT	150	150		
70300280	TEMPORARY PAVEMENT MARKING - LINE 24"	FOOT	1380 <del>2520</del>	1380 <del>2520</del>		
70300520	PAVEMENT MARKING TAPE, TYPE III 4"	FOOT	1900	1900		
• 78000100	THERMOPLASTIC PAVEMENT MARKING - LETTERS AND SYMBOLS	SO FT	173.5 <del>246.7</del>	173.5 <del>246.7</del>		1
• 78000200	THERMOPLASTIC PAVEMENT MARKING - LINE 4"	FOOT	4900 <del>6000</del>	4900 <del>6000</del>		
• 78000400	THERMOPLASTIC PAVEMENT MARKING - LINE 6"	FOOT	440 <del>550</del>	440 <del>550</del>		
• 78000600	THERMOPLASTIC PAVEMENT MARKING - LINE 12"	FOOT	150	150		
• 78000650	THERMOPLASTIC PAVEMENT MARKING - LINE 24"	FOOT	1380 <del>2520</del>	1380 <del>2520</del>		1
X4400501	COMBINATION CONCRETE CURB AND GUTTER REMOVAL AND REPLACEMENT EQUAL TO OR LESS THAN 10 FEET	FOOT	80	80		
X5537800	STORM SEWERS TO BE CLEANED 12"	FOOT	150		150	
X6030310	FRAMES AND LIDS TO BE ADJUSTED (SPECIAL)	EACH	72	72		1
X7030005	TEMPORARY PAVEMENT MARKING REMOVAL	SO FT	8740	8740		

SUMMARY OF QUANTITIES			CONSTRUCTION TYPE CODE			
CODE NO	ITEM	UNIT	URBAN TOTAL QUANTITIES	0005 80% FED 20% STATE	0005 100% STATE	
Z0004562	COMBINATION CONCRETE CURB AND GUTTER REMOVAL AND REPLACEMENT	FOOT	400 <del>3359</del>	400 <del>3359</del>		1
Z0018500	DRAINAGE STRUCTURES TO BE CLEANED	EACH	25 <del>60</del>	25 <del>60</del>		1
Z0030850	TEMPORARY INFORMATION SIGNING	SO FT	102.8	102.8		
Z0033700	LONGITUDINAL JOINT SEALANT	FOOT	8294	8294		
• SPECIALTY ITEMS						

FILE NAME =	USER NAME = gulliamerp	DESIGNED -	REVISED - 5/21/2021 FG
p:\planroom\dtd\illinois\gov\PWIDOT\Documents\DOT	Files\District\Projects\0148420\CADD\Design\0148420-3	DRAWN -	REVISED -
	PLOT SCALE = 100,0000' / in.	CHECKED -	REVISED -
	PLOT DATE = 3/19/2021	DATE -	REVISED -

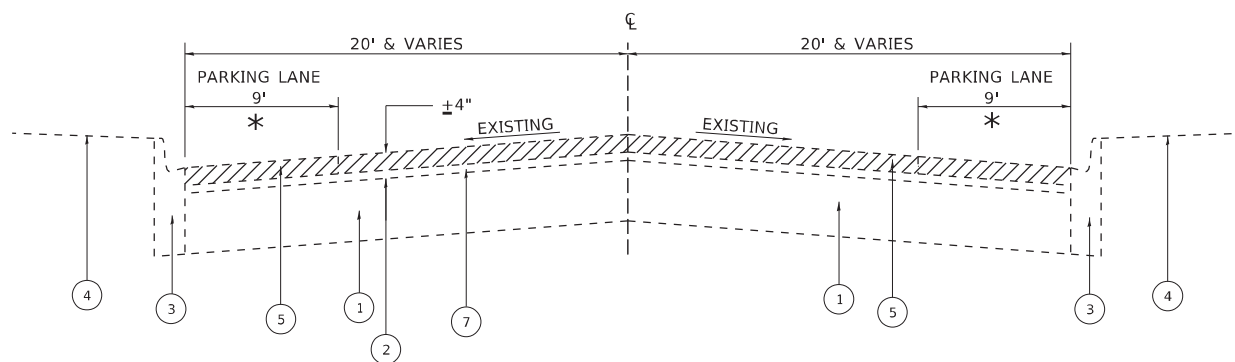
**STATE OF ILLINOIS  
DEPARTMENT OF TRANSPORTATION**

**US 41/FOSTER AVE. (ASHLAND AVE. TO US 41 (LAKE SHORE DR.))  
SUMMARY OF QUANTITIES**

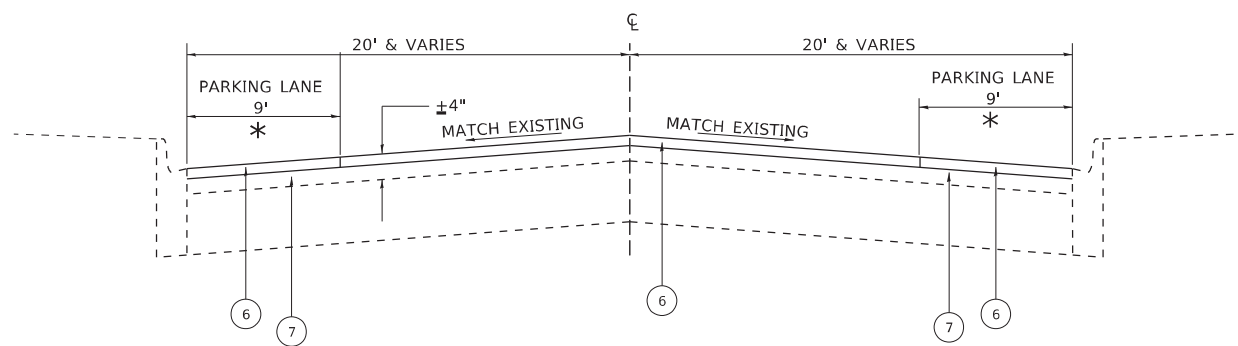
SCALE: SHEET NO. OF SHEETS STA. TO STA.

F.A.U. RTE.	SECTION	COUNTY	TOTAL SHEETS	SHEET NO.
1360	2020-085-R5	COOK	19	4
CONTRACT NO. 62L63				
FED. ROAD DIST. NO. 1 ILLINOIS FED. AID PROJECT				

1 REVISED SHEET 5/24/2021



FOSTER AVE.  
EXISTING TYPICAL CROSS SECTION  
STA. 20+60 TO STA. 69+30



FOSTER AVE.  
PROPOSED TYPICAL CROSS SECTION  
STA. 20+60 TO STA. 69+30



**LEGEND**

1. EXISTING P.C. CONCRETE PAVEMENT, ± 10"
2. EXISTING HMA SURFACE COURSE, ± 4"
3. EXISTING COMBINATION CONCRETE CURB AND GUTTER, TYPE B 6.12
4. EXISTING P.C. CONCRETE SIDEWALK
5. PROPOSED HMA SURFACE REMOVAL, 1 3/4"
6. PROPOSED POLYMERIZED HMA SURFACE COURSE, MIX "E", IL-9.5, N70, 1 3/4"
7. EXISTING HMA SURFACE OVERLAY, ± 1 1/2"

HOT-MIX ASPHALT MIXTURE REQUIREMENTS	AIR VOIDS @ NODES	QUALITY MANAGEMENT PROGRAM (QMP)
MIXTURE TYPE		
<b>RESURFACING</b>		
POLYMERIZED HOT-MIX ASPHALT SURFACE COURSE, MIX "E", N70 (IL 9.5 mm)	4% @ 70 GYR	QCP
<b>HMA PATCHING</b>		
CLASS D PATCH (HMA BINDER IL-19mm)	4% @ 70 GYR	QC/QA
HMA REPLACEMENT OVER PATCHES (HMA BINDER IL-19mm)	4% @ 70 GYR	QC/QA
QMP DESIGNATION: QUALITY CONTROL/QUALITY ASSURANCE (QC/QA); QUALITY CONTROL FOR PERFORMANCE (QCP); PAY FOR PERFORMANCE (PFP)		

THE UNIT WEIGHT USED TO CALCULATE ALL HOT-MIX ASPHALT SURFACE MIXTURE QUANTITIES IS 112 LBS/SY/IN.

THE "AC TYPE" FOR POLYMERIZED HMA MIXES SHALL BE "SBS/SBR PG 76-22" AND FOR NON-POLYMERIZED HMA THE "AC TYPE" SHALL BE "PF 64-22" UNLESS MODIFIED BY SPECIAL PROVISIONS.

FOR USE OF RECYCLED MATERIALS SEE SPECIAL PROVISIONS

QUALITY MANAGEMENT PROGRAM (QMP) IDENTIFIES THE PARTICULAR QUALITY CONTROL SPECIFICATION THAT APPLIES TO THE HMA MIXTURE.

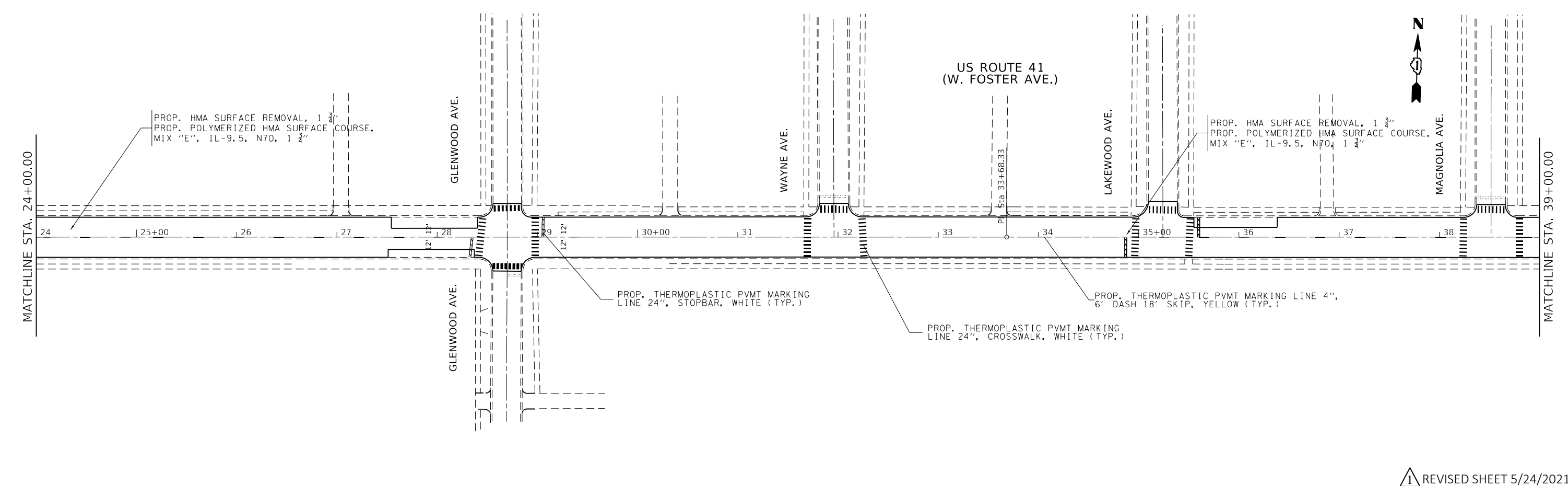
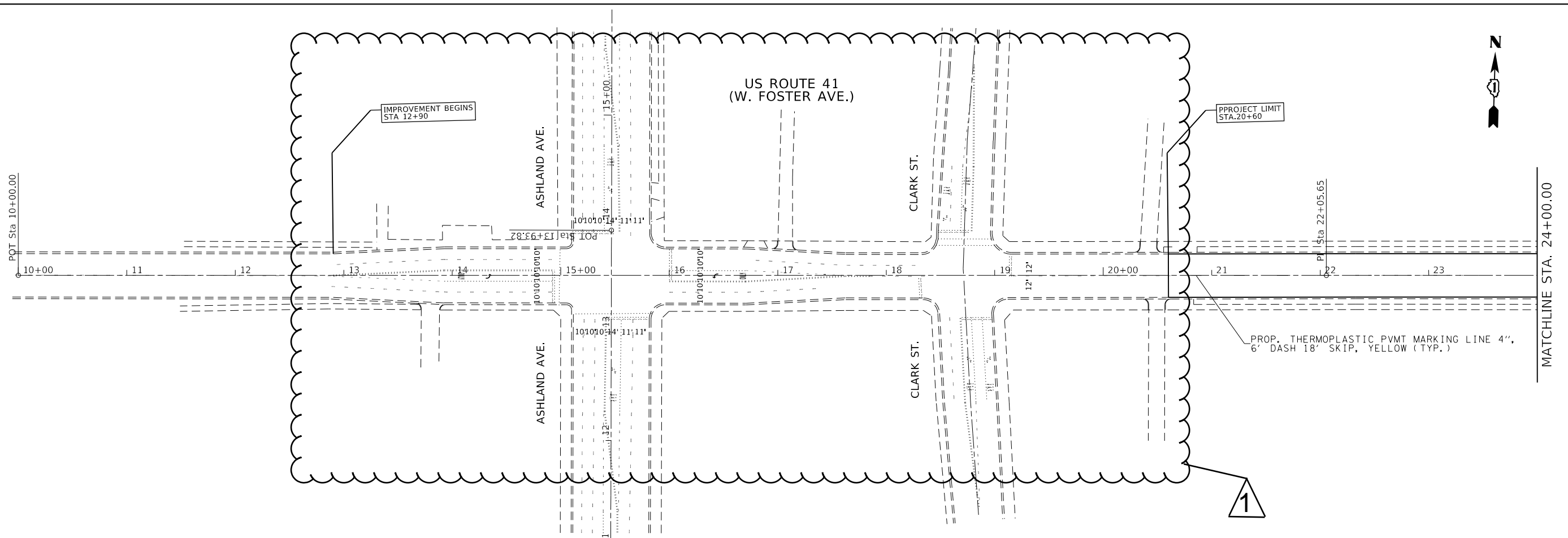
THE LONGITUDINAL JOINT SEALANT SHALL BE PLACED OVER THE MILLED SURFACE.

REVISED SHEET 5/24/2021

\* PARKING LANE  
STA. 20+60 TO STA. 53+40



CONTRACTOR SHALL PATCH FIRST BEFORE MILLING



MODEL: Default  
 FILE: h:\mhc\p\pub\barroom.dwg  
 PROJECT: D:\14820\CADD\Drawings\DOT\Office\Drawings\14820\Sheet\barroom.dwg

USER NAME = quillamefp	DESIGNED -	REVISED - 5/18/2021 FG
	DRAWN -	REVISED -
PLOT SCALE = 100.0000' / in.	CHECKED -	REVISED -
PLOT DATE = 5/18/2021	DATE -	REVISED -

**STATE OF ILLINOIS**  
**DEPARTMENT OF TRANSPORTATION**

**ROADWAY PLAN**  
**US ROUTE 41 (ASHLAND AVE TO US 41 (LAKESHORE DR.))**

F.A.U. RTE.	SECTION	COUNTY	TOTAL SHEETS	SHEET NO.
1360	2020-085-R5	COOK	19	6
CONTRACT NO. 62L63				
ILLINOIS FED. AID PROJECT				

REVISED SHEET 5/24/2021

SCALE: SHEET OF SHEETS STA. TO STA.