

STATE OF ILLINOIS
DEPARTMENT OF TRANSPORTATION

F.A.P. RTE.	SECTION	COUNTY	TOTAL SHEETS	SHEET NO.
346	2020-086-RS	LAKE	22	1
ILLINOIS CONTRACT NO. 62L64				

* 22 + 2 = 24 TOTAL SHEET

D-91-485-20



FOR INDEX OF SHEETS, SEE SHEET NO. 2

IMPROVEMENT IS LOCATED
IN THE VILLAGE OF GURNEE

TRAFFIC DATA:

ADT 2019 = 25900

POSTED SPEED LIMIT=45 MPH

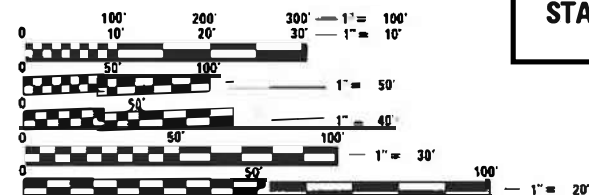
**PROPOSED
HIGHWAY PLANS**

FAP ROUTE 346: US 41 (SKOKIE HWY)
FROM IL 21 (RIVERSIDE DR) TO NORTH OF DORCHESTER AVE
SECTION 2020-086-RS
PROJECT NHPP-R4DR(985)
SMART OVERLAY
LAKE COUNTY
C-91-283-20

PROJECT BEGINS:
STA 41+87 NB
STA 52+37 SB

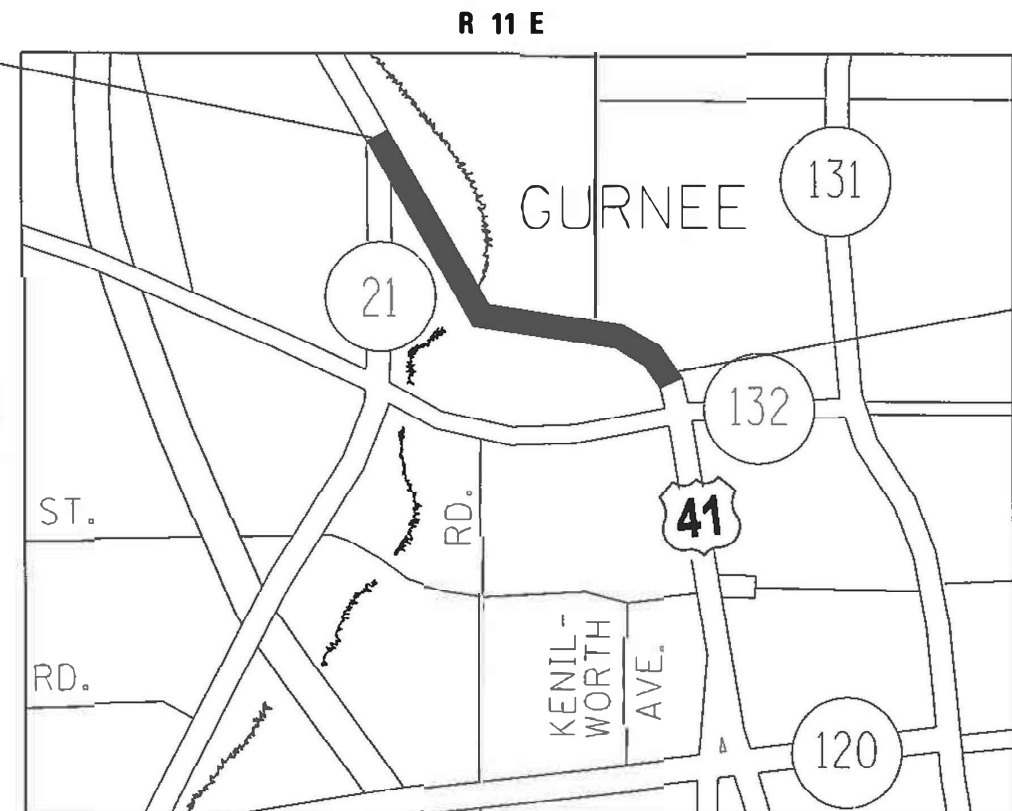
OMISSION
STA 100+51.49 TO
STA 102+67.49

PROJECT ENDS:
STA 144+76



FULL SIZE PLANS HAVE BEEN PREPARED USING STANDARD ENGINEERING SCALES. REDUCED SIZED PLANS WILL NOT CONFORM TO STANDARD SCALES. IN MAKING MEASUREMENTS ON REDUCED PLANS, THE ABOVE SCALES MAY BE USED.

J.U.L.I.E.
JOINT UTILITY LOCATION INFORMATION FOR EXCAVATORS
1-800-892-0123
OR 811



PROJECT MANAGER: J. ALAIN MIDY (847) 221-3056

CONTRACT NO. 62L64

WARREN TOWNSHIP
GROSS LENGTH = 10289 FT. = 1.95 MILE
NET LENGTH = 10000 FT. = 1.90 MILE

STATE OF ILLINOIS
DEPARTMENT OF TRANSPORTATION

SUBMITTED MARCH 9 2021
Greg Buda REGIONAL ENGINEER

May 7, 2021 J. A. Etk
ENGINEER OF DESIGN AND ENVIRONMENT

May 7, 2021 James J. Gu
DIRECTOR OF HIGHWAYS PROJECT IMPLEMENTATION

PRINTED BY THE AUTHORITY
OF THE STATE OF ILLINOIS

INDEX OF SHEETS

STATE STANDARDS

GENERAL NOTES

1 COVER SHEET
 2 INDEX OF SHEETS, STATE STANDARDS & GENERAL NOTES
 3-4A SUMMARY OF QUANTITIES
 5-6 EXISTING AND PROPOSED TYPICAL SECTIONS
 7-10 ROADWAY PLAN
 11-12 DETECTOR LOOP REPLACEMENT DETAILS
 13 DETAILS FOR FRAMES AND LIDS ADJUSTMENT WITH MILLING (BD-08)
 14 PAVEMENT PATCHING FOR HMA SURFACED PAVEMENT (BD-22)
 15 CURB OR CURB AND GUTTER REMOVAL AND REPLACEMENT (BD-24)
 16 BUTT JOINT AND HMA TAPER DETAILS (BD-32)
 17 TRAFFIC CONTROL AND PROTECTION FOR SIDE ROADS, INTERSECTIONS, AND DRIVEWAYS (TC-10)
 18 TYPICAL APPLICATIONS RAISED REFLECTIVE PAVEMENT MARKERS (SNOW PLOW RESISTANT) (TC-11)
 19 DISTRICT ONE TYPICAL PAVEMENT MARKINGS (TC-13)
 20 TRAFFIC CONTROL AND PROTECTION AT TURN BAYS (TO REMAIN OPEN TO TRAFFIC) (TC-14)
 21 SHORT TERM PAVEMENT MARKING LETTERS AND SYMBOLS (TC-16)
 21A TRAFFIC CONTROL DETAILS FOR FREEWAY SHOULDER CLOSURES AND PARTIAL RAMP CLOSURES (TC-17)
 22 ARTERIAL ROAD INFORMATION SIGN (TC-22)

000001-08 STANDARD SYMBOLS AND ABBREVIATIONS
 442201-03 CLASS C AND D PATCHES
 606001-07 COMBINATION CONCRETE CURB AND GUTTER
 701006-05 OFF-ROAD OPERATIONS, 2L, 2W, 15' TO 24" FROM PAVEMENT EDGE
 701011-04 OFF-ROAD MOVING OPERATIONS, 2L, 2W, DAY ONLY
 701101-05 OFF-ROAD OPERATIONS, MULTILANE, 15' TO 24" FROM PAVEMENT EDGE
 701106-02 OFF-ROAD OPERATIONS, MULTILANE, MORE THAN 15' AWAY
 701301-04 LANE CLOSURE, 2L, 2W, SHORT TIME OPERATIONS
 701311-03 LANE CLOSURE, 2L, 2W, MOVING OPERATIONS- DAY ONLY
 701411-09 LANE CLOSURE, MULTILANE, AT ENTRANCE OR EXIT RAMP, FOR SPEEDS > 45 MPH
 701421-08 LANE CLOSURE, MULTILANE, DAY OPERATIONS ONLY, FOR SPEEDS > 45 MPH TO 55 MPH
 701426-09 LANE CLOSURE, MULTILANE, INTERMITTENT OR MOVING OPERATIONS FOR SPEEDS > 45 MPH
 701501-06 URBAN LANE CLOSURE, 2L, 2W, UNDIVIDED
 701601-09 URBAN LANE CLOSURE, MULTILANE, 1W OR 2W WITH NON TRAVERSABLE MEDIAN
 701606-10 URBAN SINGLE LANE CLOSURE, MULTILANE, 2W, 2W WITH MOUNTABLE MEDIAN
 701701-10 URBAN LANE CLOSURE, MULTILANE INTERSECTION
 701801-06 LANE CLOSURE MULTILANE, 1W OR 2W CROSSWALK OR SIDEWALK CLOSURE
 701901-08 TRAFFIC CONTROL DEVICES

- BEFORE STARTING ANY EXCAVATION, THE CONTRACTOR SHALL CALL "J.U.L.I.E." AT (800) 892-0123 OR 811 FOR FIELD LOCATIONS OF BURIED ELECTRIC, TELEPHONE AND GAS UTILITIES. 48 HOUR NOTIFICATION IS REQUIRED.
- THE CONTRACTOR SHALL COORDINATE CONSTRUCTION ACTIVITIES WITH UTILITY COMPANIES AND THE VILLAGE OF GURNEE.
- THE CONTRACTOR WILL NOT BE ALLOWED TO SET UP A YARD OR FIELD OFFICE ON STATE PROPERTY WITHOUT WRITTEN PERMISSION FROM THE DEPARTMENT.
- ANY PAVEMENT MARKINGS AND RAISED REFLECTIVE PAVEMENT MARKERS OBLITERATED BY MILLING AND RESURFACING OPERATIONS ON SIDE STREETS AND ENTRANCES SHALL BE REPLACED AND PAID FOR IN KIND.
- BEFORE BEGINNING ANY WORK, THE CONTRACTOR SHALL RETAIN AND RECORD FOR FUTURE REFERENCE, ALL EXISTING PAVEMENT MARKING LINES (AND RAISED REFLECTIVE PAVEMENT MARKERS) IN ORDER THAT THESE LOCATIONS CAN BE RE-ESTABLISHED FOR STRIPING. EXACT LOCATIONS OF ALL PAVEMENT MARKINGS SHALL BE AS DIRECTED BY THE ENGINEER.
- ALL PAVEMENT PATCHING LOCATIONS WILL BE DETERMINED IN THE FIELD BY THE ENGINEER.
- LOCATION OF COMBINATION CONCRETE CURB AND GUTTER REMOVAL AND REPLACEMENT WILL BE DETERMINED IN THE FIELD BY THE ENGINEER.
- DRAINAGE ADJUSTMENT OR RECONSTRUCTION LOCATIONS WILL BE DETERMINED IN THE FIELD BY THE ENGINEER.
- IT SHALL BE THE CONTRACTOR'S RESPONSIBILITY TO VERIFY ALL DIMENSIONS AND CONDITIONS EXISTING IN THE FIELD PRIOR TO CONSTRUCTION AND ORDERING OF MATERIALS.
- FRAMES AND GRATES ADJUSTMENT OF PRIVATE UTILITIES WITHIN THE LIMITS OF THE IMPROVEMENTS SHALL BE DONE BY THEIR RESPECTIVE OWNERS AND ARE NOT PART OF THIS CONTRACT.
- THE CONTRACTOR SHALL CONTACT THE DISTRICT ONE TRAFFIC CONTROL SUPERVISOR FOR ARTERIALS AT: Kalpana.Kannan-Hosadurga@illinois.gov A MINIMUM OF 72 HOURS IN ADVANCE OF BEGINNING WORK.
- THE RESIDENT ENGINEER SHALL CONTACT WALTER CZARNY, ARTERIAL TRAFFIC FIELD ENGINEER AT Walter.czarny@illinois.gov A MINIMUM OF TWO (2) WEEKS PRIOR TO PLACING PERMANENT PAVEMENT MARKINGS.
- THESE PLANS HAVE BEEN PREPARED FROM NOTES RECEIVED FROM THE BUREAU OF CONSTRUCTION.
- THE CONTRACTOR SHALL BE REQUIRED TO PROVIDE ACCESS TO ABUTTING PROPERTY AT ALL TIMES DURING THE CONSTRUCTION OF THIS PROJECT.
- DO NOT SCALE PLANS FOR CONSTRUCTION DIMENSIONS.
- DOUBLE LANE MARKERS ARE TO BE USED AS SHOWN ON THE DISTRICT ONE DETAIL "TYPICAL APPLICATIONS - RAISED REFLECTIVE PAVEMENT MARKERS (SNOW-PLOW RESISTANT)" SHOWN IN THE PLANS.
- PAVEMENT MARKING TAPE, TYPE III SHALL BE USED FOR SHORT TERM PAVEMENT MARKINGS ON ALL FINAL SURFACES.
- WHEN THE MILLED PAVEMENT IS OPEN TO TRAFFIC THE MAX. GRADE DIFFERENTIAL BETWEEN PASSES OF THE MILLING MACHINE SHALL NOT EXCEED 1 1/2" WHERE THE SPEED LIMIT IS 40 MPH OR LESS AND 1" WHERE THE SPEED LIMIT IS GREATER THAN 40 MPH. WITH WRITTEN APPROVAL OF THE ENGINEER, A MAX. GRADE DIFFERENTIAL OF 3" (75 MM) MAY BE ALLOWED IF THE EDGE OF THE MILLING IS SLOPED A MINIMUM 1:3 (V:H) OR A NOTCHED LONGITUDINAL WEDGE IS USED.

MODEL: Default
 FILE NAME: p:\pub\mroom.dwt\illinois.gov\PWIDOT\Documents\DOT_Offices\District 1\Project\ID148520\CaddData\Design\ID148520-sh-1-bn.dgn

USER NAME = paraynoal	DESIGNED -	REVISED -
	DRAWN -	REVISED -
PLOT SCALE = 100,0000' / in.	CHECKED -	REVISED -
PLOT DATE = 3/19/2021	DATE -	REVISED -

**STATE OF ILLINOIS
DEPARTMENT OF TRANSPORTATION**

INDEX OF SHEETS, STATE STANDARDS AND GENERAL NOTES			
US ROUTE 41 (SKOKIE HWY.) (RIVERSIDE DR. TO DORCHESTER AVE)			
SCALE:	SHEET	OF	SHEETS
	STA.		TO STA.

F.A.P. RTE.	SECTION	COUNTY	TOTAL SHEETS	SHEET NO.
346	2020-086-R5	LAKE	22	2
			CONTRACT NO. 62L64	
ILLINOIS FED. AID PROJECT				

SUMMARY OF QUANTITIES			TOTAL QUANTITIES URBAN	CONSTRUCTION TYPE CODE 0005				
CODE NO	ITEM	UNIT		0005 80% FED 20% STATE	0005 100% STATE			
21101615	TOPSOIL FURNISH AND PLACE, 4"	SO YD	1710	1710				
25200110	SODDING, SALT TOLERANT	SO YD	1710	1710				
25200200	SUPPLEMENTAL WATERING	UNIT	17	17				
40600290	BITUMINOUS MATERIALS (TACK COAT)	POUND	35400	35400				
40600400	MIXTURE FOR CRACKS, JOINTS, AND FLANGWAYS	TON	118	118				
40600982	HOT-MIX ASPHALT SURFACE REMOVAL - BUTT JOINT	SO YD	450	450				
40604060	HOT-MIX ASPHALT SURFACE COURSE, IL-9.5, MIX "D", N50	TON	2.9	2.9				
40604062	HOT-MIX ASPHALT SURFACE COURSE, IL-9.5, MIX "D", N70	TON	710	710				
40605026	POLYMERIZED HOT-MIX ASPHALT SURFACE COURSE, STONE MATRIX ASPHALT, 9.5, MIX "F", N80	TON	6998	6998				
42001300	PROTECTIVE COAT	SO YD	435	435				
44000156	HOT-MIX ASPHALT SURFACE REMOVAL, 1 3/4"	SO YD	78650	78650				
44000200	DRIVEWAY PAVEMENT REMOVAL	SO YD	300	300				
44000600	SIDEWALK REMOVAL	SO FT	85	85				

SUMMARY OF QUANTITIES			TOTAL QUANTITIES URBAN	CONSTRUCTION TYPE CODE 0005				
CODE NO	ITEM	UNIT		0005 80% FED 20% STATE	0005 100% STATE			
44003510	MEDIAN REMOVAL PARTIAL DEPTH	SO FT	225	225				
44201827	CLASS D PATCHES, TYPE II, 15 INCH	SO YD	580	580				
44201831	CLASS D PATCHES, TYPE III, 15 INCH	SO YD	225	225				
44201833	CLASS D PATCHES, TYPE IV, 15 INCH	SO YD	150	150				
48102100	AGGREGATE WEDGE SHOULDER, TYPE B	TON	660	660				
56109210	WATER VALVES TO BE ADJUSTED	EACH	1	1				
60251740	CATCH BASINS TO BE ADJUSTED WITH NEW TYPE 24 FRAME AND GRATE	EACH	4	4				
60300305	FRAMES AND LIDS TO BE ADJUSTED	EACH	39	39				
60406100	FRAMES AND LIDS, TYPE 1, CLOSED LID	EACH	8	8				
60618300	CONCRETE MEDIAN SURFACE, 4 INCH	SO FT	225	225				
64200116	SHOULDER RUMBLE STRIPS, 16 INCH	FOOT	17100	17100				
67000400	ENGINEER'S FIELD OFFICE, TYPE A	CAL MO	12	12				
67100100	MOBILIZATION	L SUM	1	1				
70100420	TRAFFIC CONTROL AND PROTECTION, STANDARD 701411	EACH	1	1				
70102620	TRAFFIC CONTROL AND PROTECTION, STANDARD 701501	L SUM	1	1				

MODEL: D:\draft\...
 FILE NAME: ...
 PROJECT: ...
 USER: ...
 DATE: ...

USER NAME = paraynoal	DESIGNED -	REVISED -
	DRAWN -	REVISED -
PLOT SCALE = 100.0000' / in.	CHECKED -	REVISED -
PLOT DATE = 3/19/2021	DATE -	REVISED -

STATE OF ILLINOIS
DEPARTMENT OF TRANSPORTATION

SUMMARY OF QUANTITIES
US ROUTE 41 (SKOKIE HWY.) (RIVERSIDE DR. TO DORCHESTER AVE)

F.A.P. RTE.	SECTION	COUNTY	TOTAL SHEETS	SHEET NO.
346	2020-086-R5	LAKE	22	3
CONTRACT NO. 62L64			REV-SEP	

SCALE: NONE SHEET 1 OF 3 SHEETS STA. TO STA.

ILLINOIS FED. AID PROJECT

SUMMARY OF QUANTITIES			TOTAL QUANTITIES URBAN	CONSTRUCTION TYPE CODE 0005						SUMMARY OF QUANTITIES			TOTAL QUANTITIES URBAN	CONSTRUCTION TYPE CODE 0005					
CODE NO	ITEM	UNIT		0005 80% FED 20% STATE	0005 100% STATE					CODE NO	ITEM	UNIT		0005 80% FED 20% STATE	0005 100% STATE				
70102625	TRAFFIC CONTROL AND PROTECTION, STANDARD 701606	L SUM	1	1					* 78000200	THERMOPLASTIC PAVEMENT MARKING - LINE 4"	FOOT	45000	45000						
70102630	TRAFFIC CONTROL AND PROTECTION, STANDARD 701601	L SUM	1	1					* 78000400	THERMOPLASTIC PAVEMENT MARKING - LINE 6"	FOOT	2650	2650						
70102635	TRAFFIC CONTROL AND PROTECTION, STANDARD 701701	L SUM	1	1					* 78000500	THERMOPLASTIC PAVEMENT MARKING - LINE 8"	FOOT	380	380						
70102640	TRAFFIC CONTROL AND PROTECTION, STANDARD 701801	L SUM	1	1					* 78000600	THERMOPLASTIC PAVEMENT MARKING - LINE 12"	FOOT	1850	1850						
70107025	CHANGEABLE MESSAGE SIGN	CAL DA	60	60					* 78000650	THERMOPLASTIC PAVEMENT MARKING - LINE 24"	FOOT	350	350						
70300100	SHORT TERM PAVEMENT MARKING	FOOT	11200	11200					* 78100100	RAISED REFLECTIVE PAVEMENT MARKER	EACH	558	558						
70300150	SHORT TERM PAVEMENT MARKING REMOVAL	SO FT	5600	5600					78300200	RAISED REFLECTIVE PAVEMENT MARKER REMOVAL	EACH	558	558						
70300210	TEMPORARY PAVEMENT MARKING LETTERS AND SYMBOLS	SO FT	546	546					85000200	MAINTENANCE OF EXISTING TRAFFIC SIGNAL INSTALLATION	EACH	1	1						
70300220	TEMPORARY PAVEMENT MARKING - LINE 4"	FOOT	45000	45000					* 88600600	DETECTOR LOOP REPLACEMENT	FOOT	1330	1330						
70300240	TEMPORARY PAVEMENT MARKING - LINE 6"	FOOT	2650	2650					89502376	REBUILD EXISTING HANDHOLE	EACH	1	1						
70300250	TEMPORARY PAVEMENT MARKING - LINE 8"	FOOT	380	380					X2020110	GRADING AND SHAPING SHOULDERS	UNIT	180	180						
70300260	TEMPORARY PAVEMENT MARKING - LINE 12"	FOOT	1850	1850					X4400501	COMBINATION CONCRETE CURB AND GUTTER REMOVAL AND REPLACEMENT LESS THAN OR EQUAL TO 10 FEET	FOOT	250	250						
70300280	TEMPORARY PAVEMENT MARKING - LINE 24"	FOOT	350	350					X5537800	STORM SEWERS TO BE CLEANED 12"	FOOT	1700	1700						
70300520	PAVEMENT MARKING TAPE, TYPE III 4"	FOOT	5600	5600					X6030310	FRAMES AND LIDS TO BE ADJUSTED (SPECIAL)	EACH	11	11						
78000100	THERMOPLASTIC PAVEMENT MARKING - LETTERS AND SYMBOLS	SO FT	546	546															
* SPECIALTY ITEMS									* SPECIALTY ITEMS										

MODEL: Default
 FILE NAME: p:\p10\aroom.d\illinois.gov\p10\aroom\Documents\DOT_Offices\District 1\Projects\148520\CA\Draw\Design\148520-ent-plan.dgn

USER NAME = paraynoal	DESIGNED -	REVISED -
	DRAWN -	REVISED -
PLOT SCALE = 100.0000' / in.	CHECKED -	REVISED -
PLOT DATE = 3/19/2021	DATE -	REVISED -

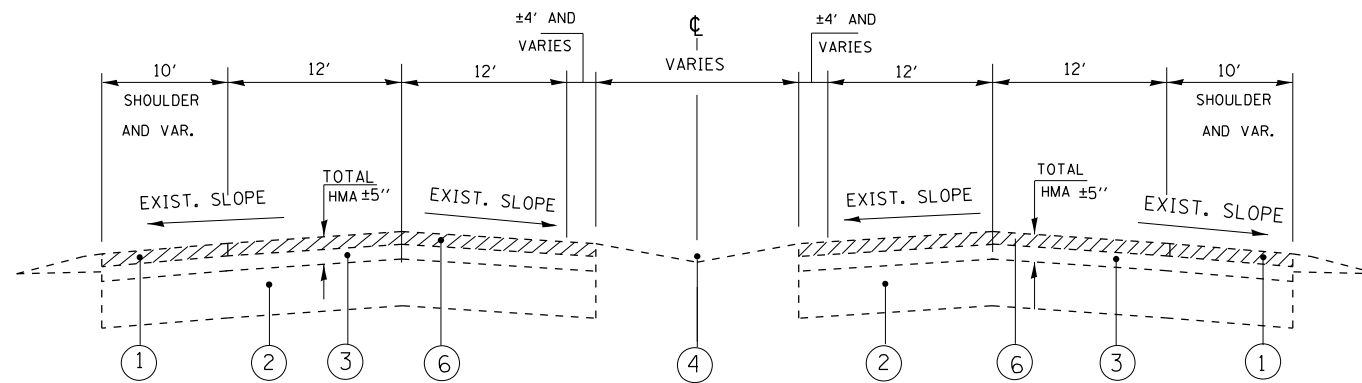
**STATE OF ILLINOIS
DEPARTMENT OF TRANSPORTATION**

SUMMARY OF QUANTITIES	
US ROUTE 41 (SKOKIE HWY.) (RIVERSIDE DR. TO DORCHESTER AVE)	
SCALE: NONE	SHEET 2 OF 3 SHEETS STA. TO STA.

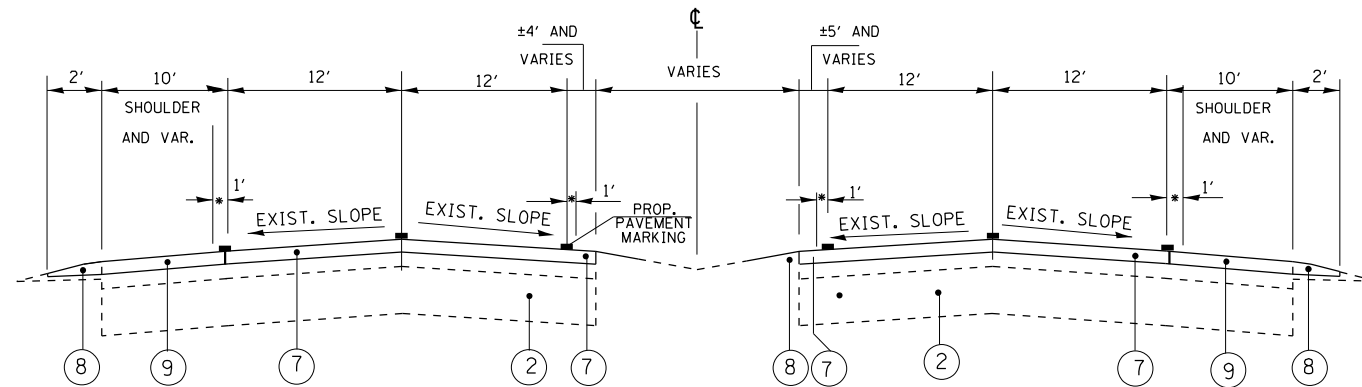
F.A.P. RTE. 346	SECTION 2020-086-R5	COUNTY LAKE	TOTAL SHEETS 22	SHEET NO. 4
CONTRACT NO. 62L64			REV-SEP	
ILLINOIS FED. AID PROJECT				

LEGEND

- ① EXISTING BITUMINOUS SHOULDER
- ② EXISTING CONCRETE PAVEMENT ±10"
- ③ EXISTING HMA PAVEMENT ±5"
- ④ EXISTING MEDIAN
- ⑤ EXISTING CURB AND GUTTER
- ⑥ HOT-MIX ASPHALT SURFACE REMOVAL 1¾"
- ⑦ PROPOSED POLYMERIZED HOT-MIX ASPHALT SURFACE COURSE STONE MATRIX ASPHALT, 9.5, MIX "F", N80, 1¾"
- ⑧ PROPOSED AGGREGATE WEDGE SHOULDER, TYPE B PROPOSED GRADING AND SHAPING SHOULDERS
- ⑨ PROPOSED HOT-MIX ASPHALT SURFACE COURSE, MIX "D", IL -9.5, N70 1¾"



EXISTING TYPICAL SECTION
 STA 41+87 TO STA 59+00
 STA 65+00 TO STA 83+61
 STA 107+51 TO STA 144+76



* RUMBLE STRIPS 16" WIDE VARIOUS LOCATIONS

PROPOSED TYPICAL SECTION
 STA 41+87 TO STA 59+00
 STA 65+00 TO STA 83+61
 STA 107+51 TO STA 144+76

CONTRACTOR SHALL MILL FIRST BEFORE PATCHING

HOT-MIX ASPHALT MIXTURE REQUIREMENTS

MIXTURE TYPE	AIR VOIDS Ndes	QUALITY MANAGEMENT PROGRAM (QMP)
PAVEMENT OVERLAY		
POLYMERIZED HOT-MIX ASPHALT SURFACE COURSE, STONE MATRIX ASPHALT, 9.5, MIX "F", N 80, 1¾"	3.5% @ 80 GYR.	QCP
SHOULDER OVERLAY		
HOT-MIX ASPHALT SURFACE COURSE, MIX "D", IL-9.5, N70 1¾"	4% @ 70 GYR.	QC / QA
PATCHING		
CLASS D PATCHES (HMA BINDER IL-19 mm)	4% @ 70 GYR.	QC / QA
DRIVEWAYS		
HOT-MIX ASPHALT SURFACE COURSE, MIX "D", IL-9.5, N50 2"	4% @ 70 GYR.	QC / QA
QMP Designation: Quality Control / Quality Assurance (QC / QA); Quality Control for Performance (QCP);		

NOTE:

- THE UNIT WEIGHT USED TO CALCULATE ALL HOT-MIX ASPHALT SURFACE MIXTURES IS 112 LBS / SQ. YD./ IN
- THE "AC TYPE" FOR POLYMERIZED HMA MIXES SHALL BE "SBS / SBR PG 76-22" AND FOR NON-POLYMERIZED HMA THE "AC TYPE" SHALL BE PG 64-22" UNLESS MODIFIED BY SPECIAL PROVISIONS.
- FOR USE OF RECYCLED MATERIALS SEE SPECIAL PROVISIONS.
- QUALITY MANAGEMENT PROGRAM (QMP) IDENTIFIES THE PARTICULAR QUANTITY CONTROL SPECIFICATION THAT APPLIES TO THE HMA MIXTURE.
- THE LONGITUDINAL JOINT SEALANT SHALL BE PLACED OVER THE MILLED SURFACE.

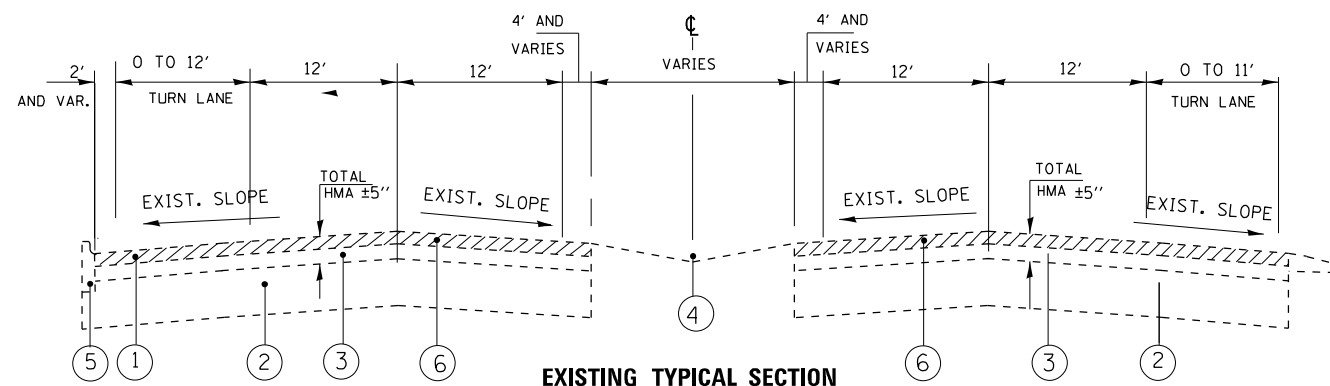
MODEL: Default
 FILE NAME: p:\m\m\room\dot\illinois.gov\PIWDOT\Documents\DOT_Office\Drawings\1\Projects\148520\CADD\Drawings\148520-sh-4-bn.dgn

USER NAME = gorengautab	DESIGNED -	REVISED -
PLOT SCALE = 100,0000' / in.	DRAWN -	REVISED -
PLOT DATE = 3/31/2021	CHECKED -	REVISED -
	DATE -	REVISED -

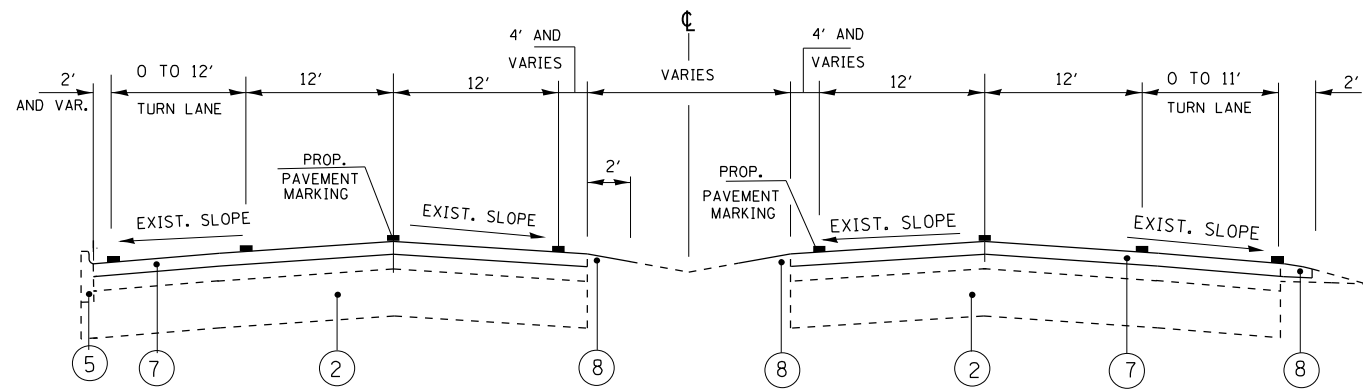
**STATE OF ILLINOIS
 DEPARTMENT OF TRANSPORTATION**

EXISTING AND PROPOSED TYPICAL SECTIONS	
US ROUTE 41 (SKOKIE HWY.) (RIVERSIDE DR. TO DORCHESTER AVE)	
SCALE:	SHEET OF SHEETS STA. TO STA.

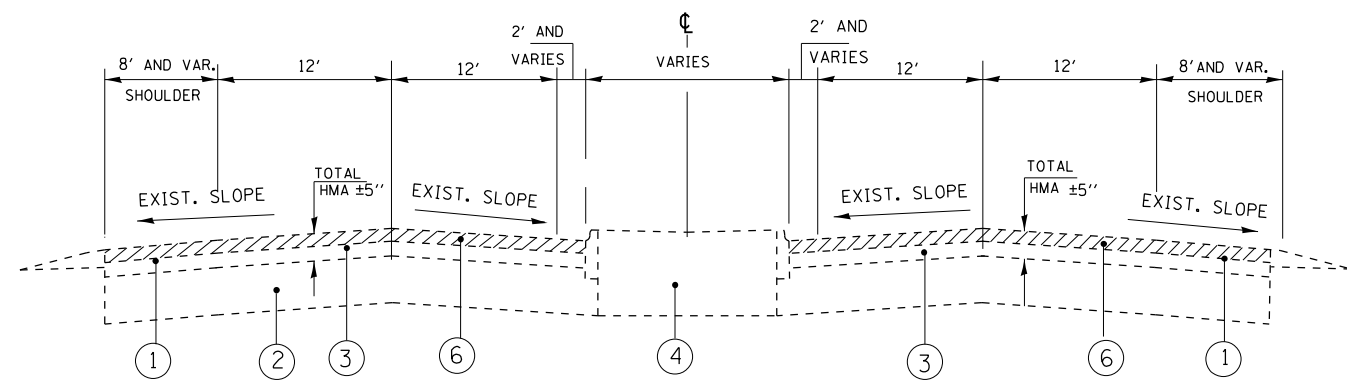
F.A.P. RTE.	SECTION	COUNTY	TOTAL SHEETS	SHEET NO.
346	2020-086-R5	LAKE	22	5
ILLINOIS FED. AID PROJECT			CONTRACT NO. 62L64	



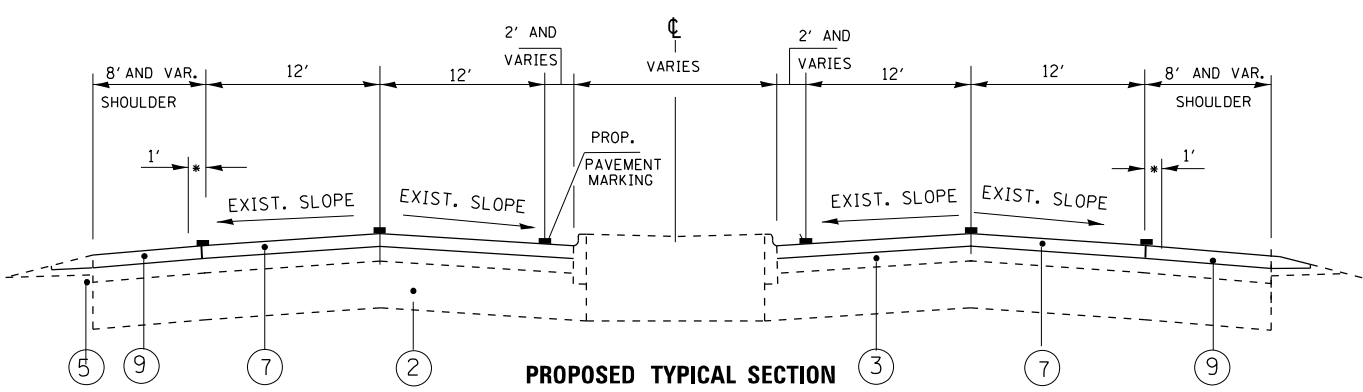
**EXISTING TYPICAL SECTION
STA 59+00 TO STA 65+00**



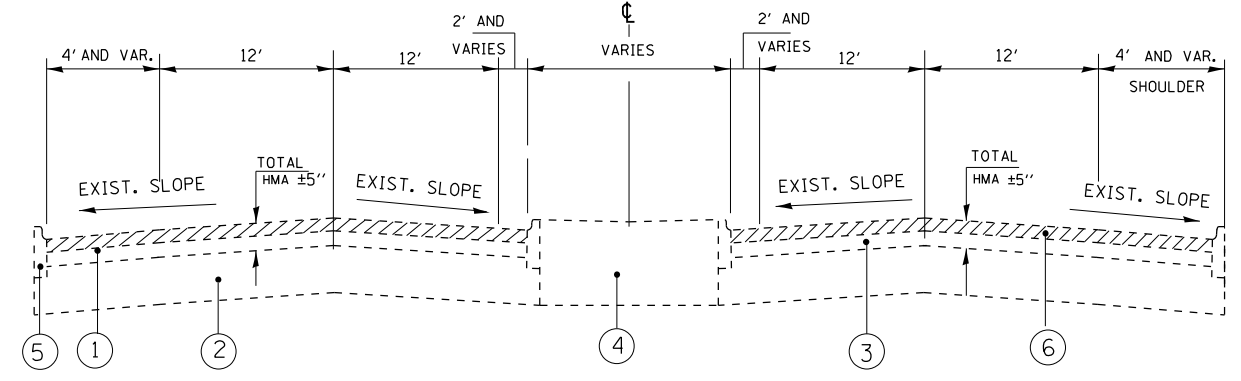
**PROPOSED TYPICAL SECTION
STA 59+00 TO STA 65+00**



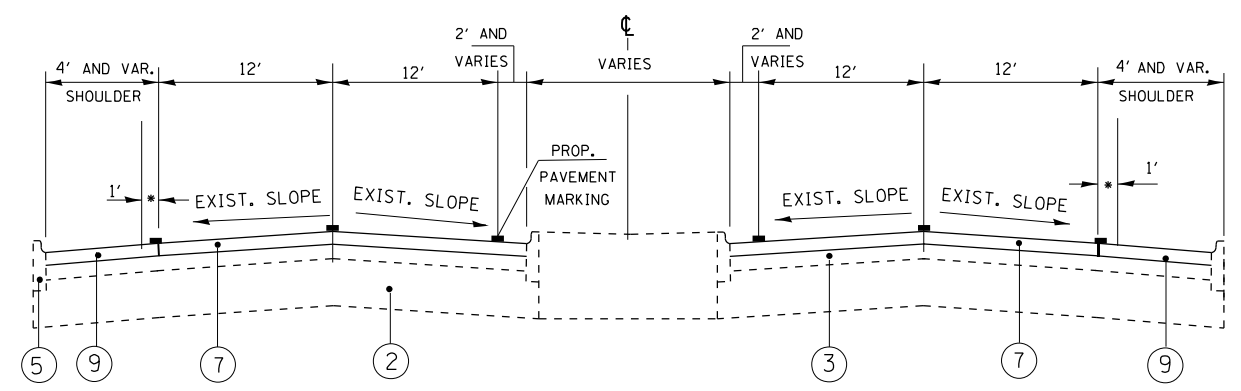
**EXISTING TYPICAL SECTION
STA 95+63 TO STA 107+51**



**PROPOSED TYPICAL SECTION
STA 95+63 TO STA 107+51**



**EXISTING TYPICAL SECTION
STA 83+61 TO STA 95+63**



**PROPOSED TYPICAL SECTION
STA 83+61 TO STA 95+63**

* RUMBLE STRIPS 16" WIDE
VARIOUS LOCATIONS

LEGEND

- ① EXISTING BITUMINOUS SHOULDER
- ② EXISTING CONCRETE PAVEMENT ±10"
- ③ EXISTING HMA PAVEMENT ±5"
- ④ EXISTING MEDIAN
- ⑤ EXISTING CURB AND GUTTER
- ⑥ HOT-MIX ASPHALT SURFACE REMOVAL 1 3/4"
- ⑦ PROPOSED POLYMERIZED HOT-MIX ASPHALT SURFACE COURSE STONE MATRIX ASPHALT, 9.5, MIX "F", N80, 1 3/4"
- ⑧ PROPOSED AGGREGATE WEDGE SHOULDER, TYPE B PROPOSED GRADING AND SHAPING SHOULDERS
- ⑨ PROPOSED HOT-MIX ASPHALT SURFACE COURSE, MIX "D", IL -9.5, N70 1 3/4"

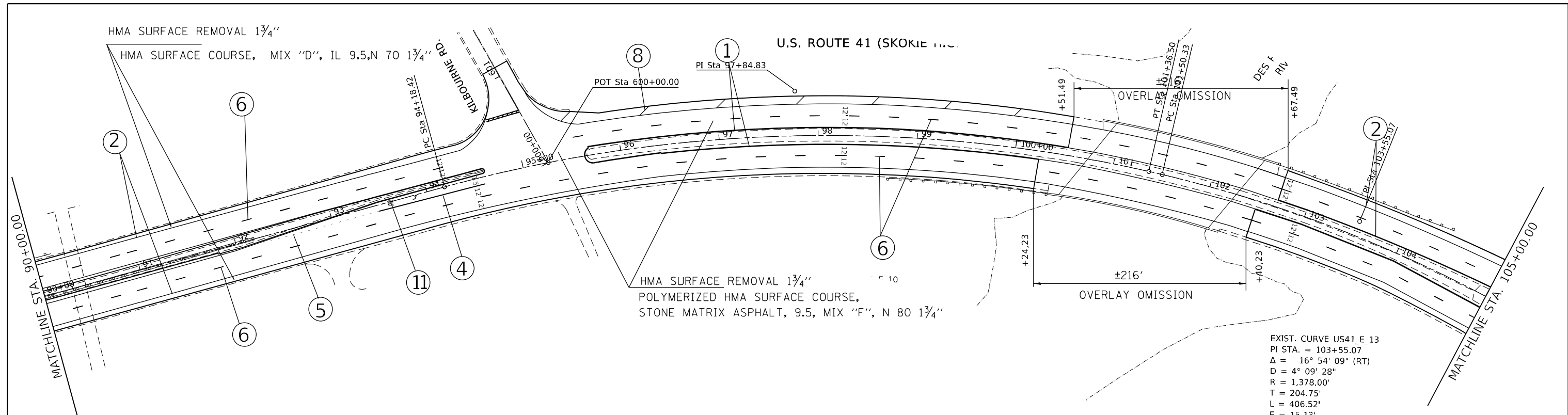
MODEL: Default
 FILE NAME: p:\illinois\dot\Documents\DOT_Office\Distric\1\Projects\148520\CaddData\Design\148520-sh-rl-bn.dgn
 PROJECT: 148520

USER NAME = gorengautab	DESIGNED -	REVISED -
DRAWN -	REVISED -	REVISED -
PLOT SCALE = 100,0000' / in.	CHECKED -	REVISED -
PLOT DATE = 3/31/2021	DATE -	REVISED -

**STATE OF ILLINOIS
DEPARTMENT OF TRANSPORTATION**

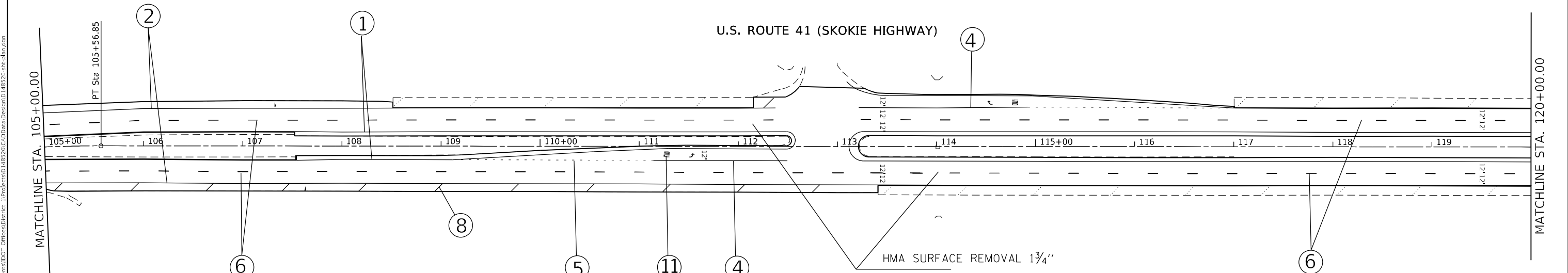
EXISTING AND PROPOSED TYPICAL SECTIONS			
US ROUTE 41 (SKOKIE HWY.) (RIVERSIDE DR. TO DORCHESTER AVE)			
SCALE:	SHEET	OF SHEETS	STA. TO STA.

F.A.P. RTE.	SECTION	COUNTY	TOTAL SHEETS	SHEET NO.
346	2020-086-R5	LAKE	22	6
ILLINOIS FED. AID PROJECT			CONTRACT NO. 62L64	



EXIST. CURVE US41_E.13
 PI STA. = 103+55.07
 $\Delta = 16^\circ 54' 09''$ (RT)
 $D = 4^\circ 09' 28''$
 $R = 1,378.00'$
 $T = 204.75'$
 $L = 406.52'$
 $E = 15.13'$

- ① PROP.THPL. PVMT MARKING 4" SOLID YELLOW LINE (TYP)
- ② PROP.THPL. PVMT MARKING 4" SOLID WHITE LINE (TYP)
- ③ PROP.THPL. PVMT MARKING 4" SOLID DOUBLE YELLOW LINE (TYP)
- ④ PROP.THPL. PVMT MARKING 6" SOLID WHITE LINE (TYP)
- ⑤ PROP.THPL. PVMT MARKING 6" WHITE DOTTED LINE 2' LONG, 6' SPACING (TYP)
- ⑥ PROP.THPL. PVMT MARKING 4" WHITE SKIP DASH LINE 10' LONG, 30' SPACING (TYP)
- ⑦ PROP.THPL. PVMT MARKING 8" SOLID WHITE LINE (TYP)
- ⑧ PROP.THPL. PVMT MARKING 12" WHITE DIAGONALS (TYP) (PER TC-13).
- ⑨ PROP.THPL. PVMT MARKING 12" YELLOW DIAGONALS (TYP) (PER TC-13).
- ⑩ PROP.THPL. PVMT MARKING 24" SOLID WHITE STOP BAR (TYP)
- ⑪ PROP.THPL. PVMT MARKING WHITE LETTERS AND SYMBOLS (TYP)
- ⑫ PROP.THPL. PVMT MARKING 12" WHITE CROSSWALK LINES - 6' LONG, 2' SPACING (TYP) (PER TC-13)



HMA SURFACE REMOVAL 1 3/4"
 HMA SURFACE COURSE, MIX "D", IL 9.5, N 70 1 3/4"

HMA SURFACE REMOVAL 1 3/4"
 POLYMERIZED HMA SURFACE COURSE,
 STONE MATRIX ASPHALT, 9.5, MIX "F", N 80 1 3/4"

MODEL: Default
 FILE NAME: p:\pub\mroom.dwt
 PROJECT: D:\48520\CADD\Drawings\1\Project\48520\CADD\Drawings\1\Project\48520\shp\plan.dwg

USER NAME = gorengautab	DESIGNED -	REVISED -
DRAWN -	REVISED -	
PLOT SCALE = 100,0000' / in.	CHECKED -	REVISED -
PLOT DATE = 3/31/2021	DATE -	REVISED -

**STATE OF ILLINOIS
 DEPARTMENT OF TRANSPORTATION**

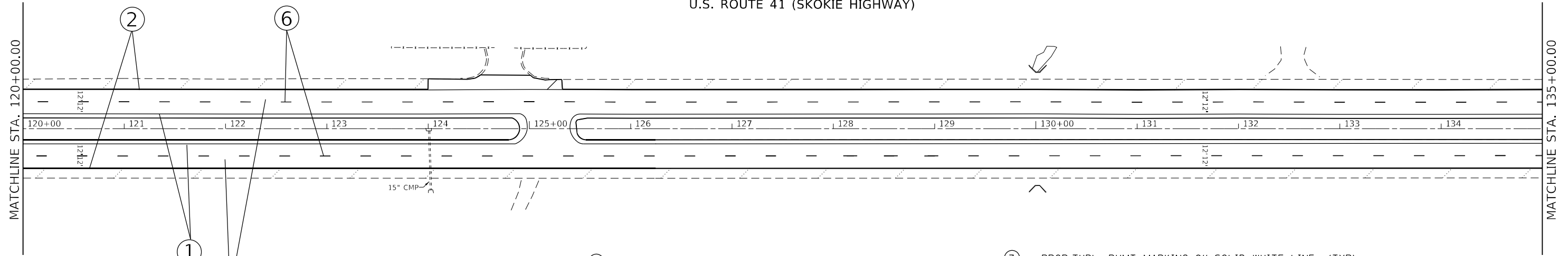
**EXISTING AND PROPOSED ROADWAY PLAN
 US RTE 41 (SKOKIE HWY.) (RIVERSIDE DR. TO DORCHESTER AVE)**

SCALE: 1" : 50'

SHEET OF SHEETS STA. TO STA.

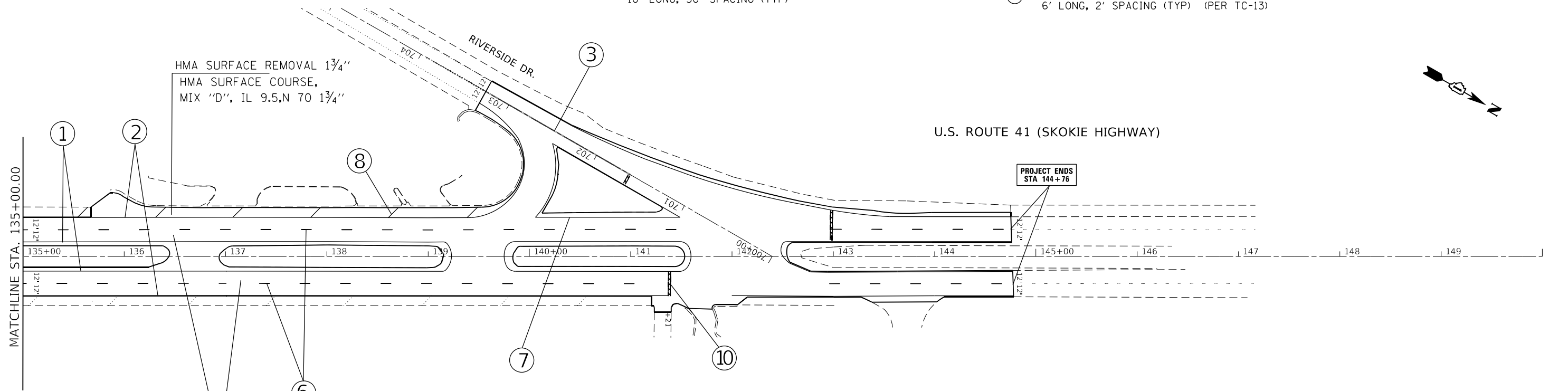
F.A.P. RTE. 346	SECTION 2020-086-R5	COUNTY LAKE	TOTAL SHEETS 22	SHEET NO. 9
CONTRACT NO. 62L64				
ILLINOIS FED. AID PROJECT				

U.S. ROUTE 41 (SKOKIE HIGHWAY)



HMA SURFACE REMOVAL 1 3/4"
POLYMERIZED HMA SURFACE COURSE,
STONE MATRIX ASPHALT, 9.5, MIX "F", N 80 1 3/4"

- ① PROP.THPL. PVMT MARKING 4" SOLID YELLOW LINE (TYP)
- ② PROP.THPL. PVMT MARKING 4" SOLID WHITE LINE (TYP)
- ③ PROP.THPL. PVMT MARKING 4" SOLID DOUBLE YELLOW LINE (TYP)
- ④ PROP.THPL. PVMT MARKING 6" SOLID WHITE LINE (TYP)
- ⑤ PROP.THPL. PVMT MARKING 6" WHITE DOTTED LINE 2' LONG, 6' SPACING (TYP)
- ⑥ PROP.THPL. PVMT MARKING 4" WHITE SKIP DASH LINE 10' LONG, 30' SPACING (TYP)
- ⑦ PROP.THPL. PVMT MARKING 8" SOLID WHITE LINE (TYP)
- ⑧ PROP.THPL. PVMT MARKING 12" WHITE DIAGONALS (TYP) (PER TC-13).
- ⑨ PROP.THPL. PVMT MARKING 12" YELLOW DIAGONALS (TYP) (PER TC-13).
- ⑩ PROP.THPL. PVMT MARKING 24" SOLID WHITE STOP BAR (TYP)
- ⑪ PROP.THPL. PVMT MARKING WHITE LETTERS AND SYMBOLS (TYP)
- ⑫ PROP.THPL. PVMT MARKING 12" WHITE CROSSWALK LINES - 6' LONG, 2' SPACING (TYP) (PER TC-13)



HMA SURFACE REMOVAL 1 3/4"
HMA SURFACE COURSE,
MIX "D", IL 9.5, N 70 1 3/4"

HMA SURFACE REMOVAL 1 3/4"
POLYMERIZED HMA SURFACE COURSE,
STONE MATRIX ASPHALT, 9.5, MIX "F", N 80 1 3/4"

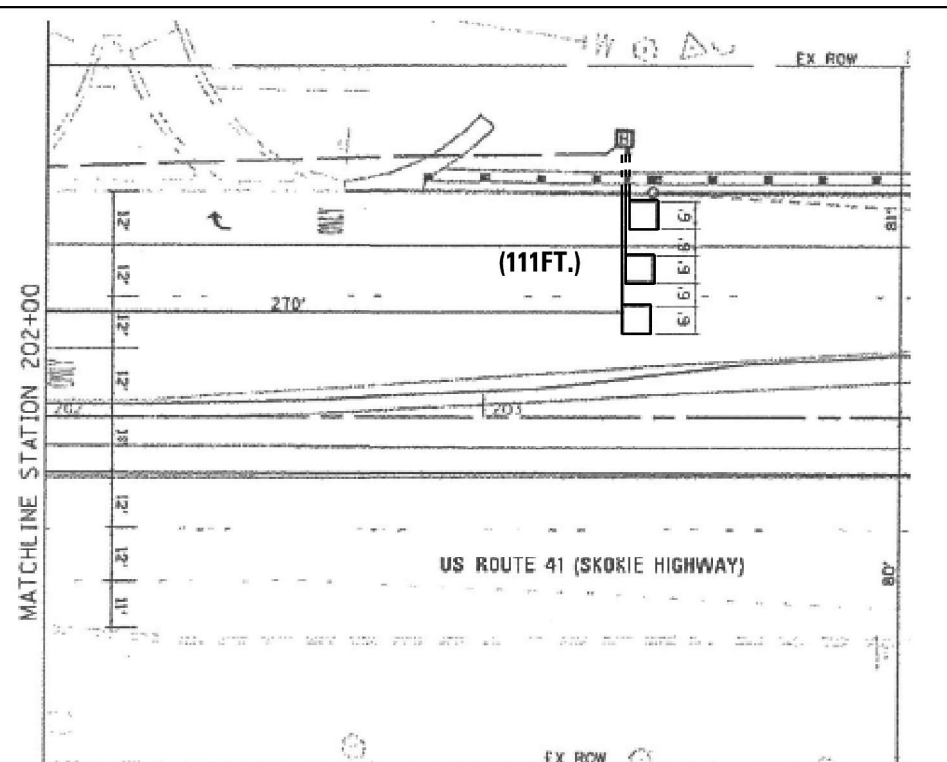
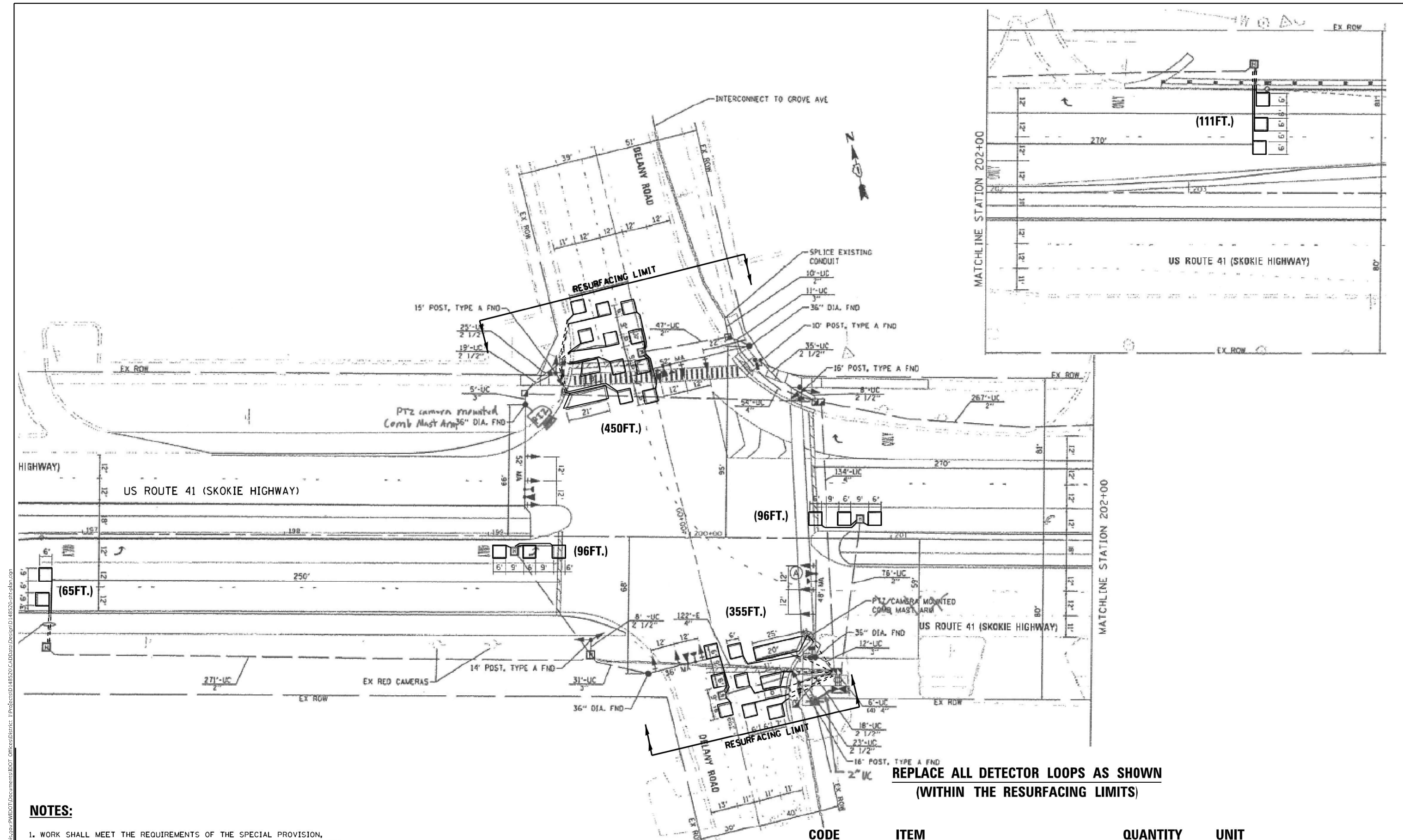
MODEL: Default
 FILE NAME: p:\planningroom\dot\illinois\dot\pww\dot\Documents\DOT_Offices\Distrefc_1\Projects\148520\Cadd\Design\148520-sh-hlb.dgn
 PROJECT: 148520\Cadd\Design\148520-sh-hlb.dgn

USER NAME = paraynoal	DESIGNED -	REVISED -
PLOT SCALE = 100,0000' / in.	DRAWN -	REVISED -
PLOT DATE = 3/19/2021	CHECKED -	REVISED -
	DATE -	REVISED -

STATE OF ILLINOIS
DEPARTMENT OF TRANSPORTATION

EXISTING AND PROPOSED ROADWAY PLAN			
US ROUTE 41 (SKOKIE HWY.) (RIVERSIDE DR. TO DORCHESTER AVE)			
SCALE: 1" : 50'	SHEET	OF SHEETS	STA. TO STA.

F.A.P. RTE. 346	SECTION 2020-086-RS	COUNTY LAKE	TOTAL SHEETS 22	SHEET NO. 10
CONTRACT NO. 62L64				
ILLINOIS FED. AID PROJECT				



NOTES:

1. WORK SHALL MEET THE REQUIREMENTS OF THE SPECIAL PROVISION, "DETECTOR LOOP REPLACEMENT AND/OR INSTALLATION (ROADWAY GRINDING, RESURFACING & PATCHING OPERATIONS).
2. THIS PLAN IS FOR THE SOLE PURPOSE OF DETECTOR LOOP REPLACEMENT.

**REPLACE ALL DETECTOR LOOPS AS SHOWN
(WITHIN THE RESURFACING LIMITS)**

CODE	ITEM	QUANTITY	UNIT
88600600	DETECTOR LOOP REPLACEMENT	1173	FOOT

TS#6570

**STATE OF ILLINOIS
DEPARTMENT OF TRANSPORTATION**

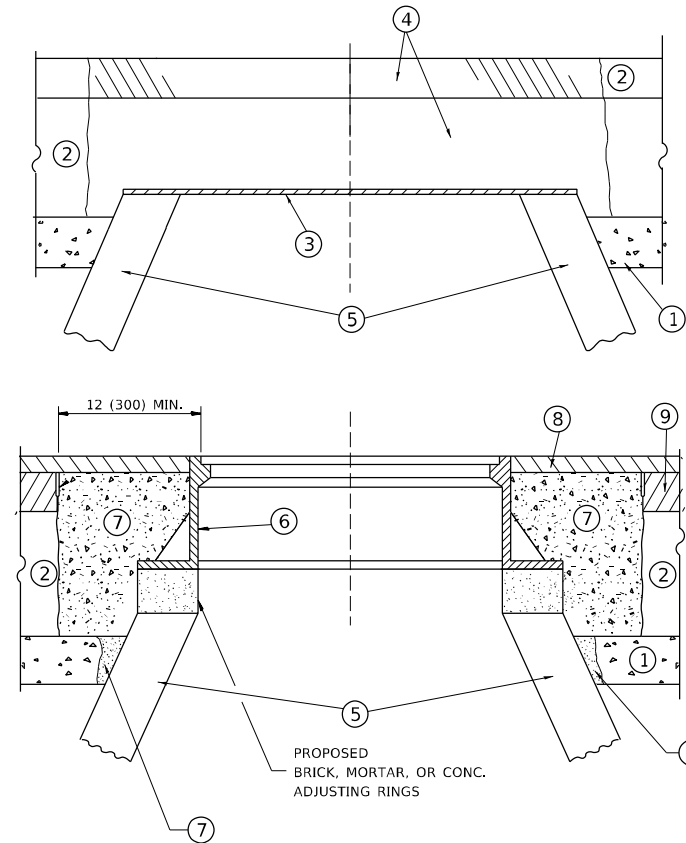
**DETECTOR LOOP REPLACEMENT PLAN AT DELANY RD
US ROUTE 41 (SKOKIE HWY.) (RIVERSIDE DR. TO DORCHESTER AVE)**

F.A.P. RTE.	SECTION	COUNTY	TOTAL SHEETS	SHEET NO.
346	2020-086-R5	LAKE	22	11
CONTRACT NO. 62L64				

SCALE: SHEET OF SHEETS STA. TO STA.

ILLINOIS FED. AID PROJECT

MODEL: Default
 FILE NAME: p:\work\2020\2020-086-R5\DOT\Documents\DOT_Office\Drawings\1\Project\2020-086-R5\DOT\Drawings\Design\1\88520-sh-6-lb-000.dwg
 PROJECT: 2020-086-R5



NOTES

EXISTING BROKEN FRAMES AND LIDS SHALL BE REMOVED AND DISPOSED OF BY THE CONTRACTOR AND SHALL BE REPLACED AS DIRECTED BY THE ENGINEER. REPLACEMENT FRAMES AND LIDS WILL BE PAID FOR IN ACCORDANCE WITH ARTICLE 109.04 OF THE STANDARD SPECIFICATIONS UNLESS A SEPARATE PAY ITEM HAS BEEN PROVIDED.

IF THE EXISTING LIDS ARE OPEN, THE FRAME WILL BE ADJUSTED TO THE ELEVATION OF THE MILLED PAVEMENT SURFACE PRIOR TO THE MILLING OPERATION. THE FRAME WILL NOT BE REMOVED AND COVERED BY THE METAL PLATE.

CITY OF CHICAGO CASTINGS ARE THE PROPERTY OF THE CITY AND THE CONTRACTOR SHALL NOTIFY THE CITY FOR REMOVAL AND DISPOSITION OF THE CASTINGS.

THE METAL PLATE USED TO COVER THE STRUCTURE SHALL REMAIN THE PROPERTY OF THE CONTRACTOR.

WHEN STRUCTURES ARE TO BE ADJUSTED OR RECONSTRUCTED, THE LOWERING AND RAISING OF THE FRAMES AND LIDS WILL NOT BE PAID FOR SEPARATELY BUT WILL BE INCLUDED IN THE COST OF THE CORRESPONDING PAY ITEM.

CONSTRUCTION PROCEDURES

STAGE 1 (BEFORE PAVEMENT MILLING)

- A) REMOVE A MINIMUM OF 12 (300) OF THE PAVEMENT FROM AROUND THE STRUCTURE.
- B) REMOVE THE EXISTING FRAME AND LID FROM THE STRUCTURE.
- C) COVER THE STRUCTURE OPENING WITH A 36 (900) DIAMETER METAL PLATE.
- D) BACKFILL WITH CRUSHED STONE AND A MINIMUM 1½ (40) THICK HMA SURFACE MIX APPROVED BY THE ENGINEER.

STAGE 2 (AFTER PAVEMENT MILLING)

- A) REMOVE THE HMA SURFACE MIX AND CRUSHED STONE.
- B) INSTALL THE FRAME AND LID; ADJUST THE FRAME TO ITS FINAL SURFACE ELEVATION.
- C) THE SURROUNDING SPACE SHALL BE FILLED WITH CLASS PP-1 * CONCRETE TO THE ELEVATION OF THE SURFACE OF THE EXISTING BASE COURSE OR THE BINDER COURSE.

* UNLESS OTHERWISE SPECIFIED IN THE PLANS.

THE PROCEDURE EXPLAINED ABOVE SHALL CONFORM TO THE APPLICABLE PORTIONS OF SECTIONS 353, 406, 602, AND 603 OF THE STANDARD SPECIFICATIONS EXCEPT THAT *THE CONTRACTOR SHALL ADJUST THE STRUCTURES TO THE FINISHED PAVEMENT ELEVATION NO MORE THAN 5 CALENDAR DAYS PRIOR TO PLACEMENT OF THE FINAL LIFT OF SURFACE UNLESS APPROVED BY THE ENGINEER.*

LEGEND

- ① SUB-BASE GRANULAR MATERIAL
- ② EXISTING PAVEMENT
- ③ 36 (900) DIAMETER METAL PLATE
- ④ PROPOSED CRUSHED STONE AND HMA SURFACE MIX
- ⑤ EXISTING STRUCTURE
- ⑥ FRAME AND LID (SEE NOTES)
- ⑦ CLASS PP-1 *CONCRETE
- ⑧ PROPOSED HMA SURFACE COURSE
- ⑨ PROPOSED HMA BINDER COURSE

LOCATION OF STRUCTURES

THE CONTRACTOR WILL BE REQUIRED TO KEEP A RECORD OF THE LOCATIONS OF THE BURIED STRUCTURES ACCORDING TO THE STATION AND DISTANCE LEFT OR RIGHT OF THE CENTERLINE OF PAVEMENT. UPON COMPLETION OF THE WORK, THE CONTRACTOR WILL DELIVER THE RECORD TO THE ENGINEER.

BASIS OF PAYMENT

REMOVING FRAMES AND LIDS ON DRAINAGE AND UTILITY STRUCTURES IN THE PAVEMENT PRIOR TO MILLING, AND ADJUSTING TO FINAL GRADE PRIOR TO PLACING THE SURFACE COURSE, WILL BE PAID FOR AT THE CONTRACT UNIT PRICE EACH FOR *FRAMES AND LIDS TO BE ADJUSTED (SPECIAL).*

THIS WORK WILL NOT BE PAID FOR WHEN DRAINAGE AND UTILITY STRUCTURES ARE SPECIFIED FOR PAYMENT AS STRUCTURE RECONSTRUCTION.

NEW FRAMES AND LIDS, WHEN SPECIFIED, WILL BE PAID FOR SEPARATELY.

DETAILS FOR FRAMES AND LIDS ADJUSTMENT WITH MILLING

ALL DIMENSIONS ARE IN INCHES (MILLIMETERS) UNLESS OTHERWISE SHOWN

MODEL: Default
 FILE NAME: p:\pub\mroom.dwg
 PROJECT: 148520\CaddData\Design\DisStg.dgn
 PROJECT: 148520\CaddData\Design\DisStg.dgn

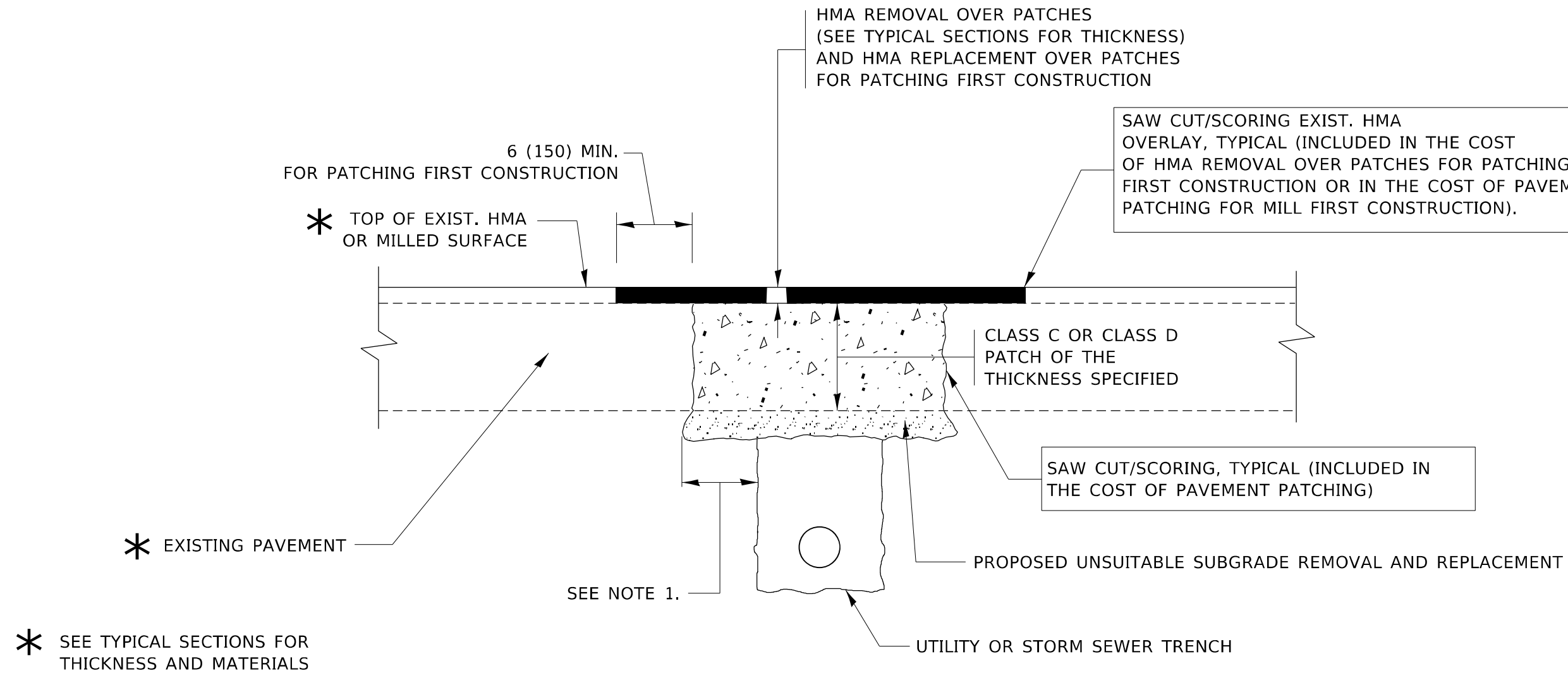
USER NAME = gorengautab	DESIGNED - R. SHAH	REVISED - R. WEDEMAN 05-14-04
	DRAWN -	REVISED - R. BORO 01-01-07
PLOT SCALE = 100,0000' / in.	CHECKED -	REVISED - R. BORO 03-09-11
PLOT DATE = 3/10/2021	DATE - 10-25-94	REVISED - R. BORO 12-06-11

**STATE OF ILLINOIS
DEPARTMENT OF TRANSPORTATION**

**DETAILS FOR
FRAMES AND LIDS ADJUSTMENT WITH MILLING**

SCALE: NONE SHEET 1 OF 1 SHEETS STA. TO STA.

F.A.P. RTE.	SECTION	COUNTY	TOTAL SHEETS	SHEET NO.
346	2020-086-RS	LAKE	22	13
BD600-03 (BD-8)		CONTRACT NO. 62L64		
ILLINOIS		FED. AID PROJECT		



NOTES:

1. THE WIDTH OF THE FULL DEPTH PATCH OVER A TRENCH SHALL BE 12 (300) WIDER ON EACH SIDE OF THE TRENCH.
2. FOR METHOD OF MEASUREMENT AND BASIS OF PAYMENT, SEE RECURRING SPECIAL PROVISION "PATCHING WITH HOT-MIX ASPHALT OVERLAY REMOVAL".

SEQUENCE OF CONSTRUCTION (PATCHING FIRST)

1. REMOVE THE EXISTING HMA MATERIAL OVER THE AREA TO BE PATCHED.
2. REMOVE AND REPLACE WITH CLASS C OR D PATCH.
3. REPLACE HMA MATERIAL OVER THE AREA TO BE PATCHED.

SEQUENCE OF CONSTRUCTION (MILLING FIRST)

1. MILL HMA FIRST IF THERE IS AT LEAST 4½ INCHES OR MORE OF HMA MATERIAL ON TOP OF THE EXISTING PAVEMENT OR IF THE PAVEMENT IS FULL DEPTH HMA. A MINIMUM OF 2 INCHES OF HMA MATERIAL SHALL BE IN PLACE AFTER MILLING.
2. REMOVE AND REPLACE WITH FULL DEPTH CLASS D PATCHES TO TOP OF MILLED SURFACE.

ALL DIMENSIONS ARE IN INCHES (MILLIMETERS) UNLESS OTHERWISE SHOWN.

MODEL: Default
 FILE NAME: p:\pub\harrington.edu\illinois.gov\PIWDOT\Documents\DOT_Offices\District 1\Projects\148520\CADD\Design\Design\DIS\54.dgn

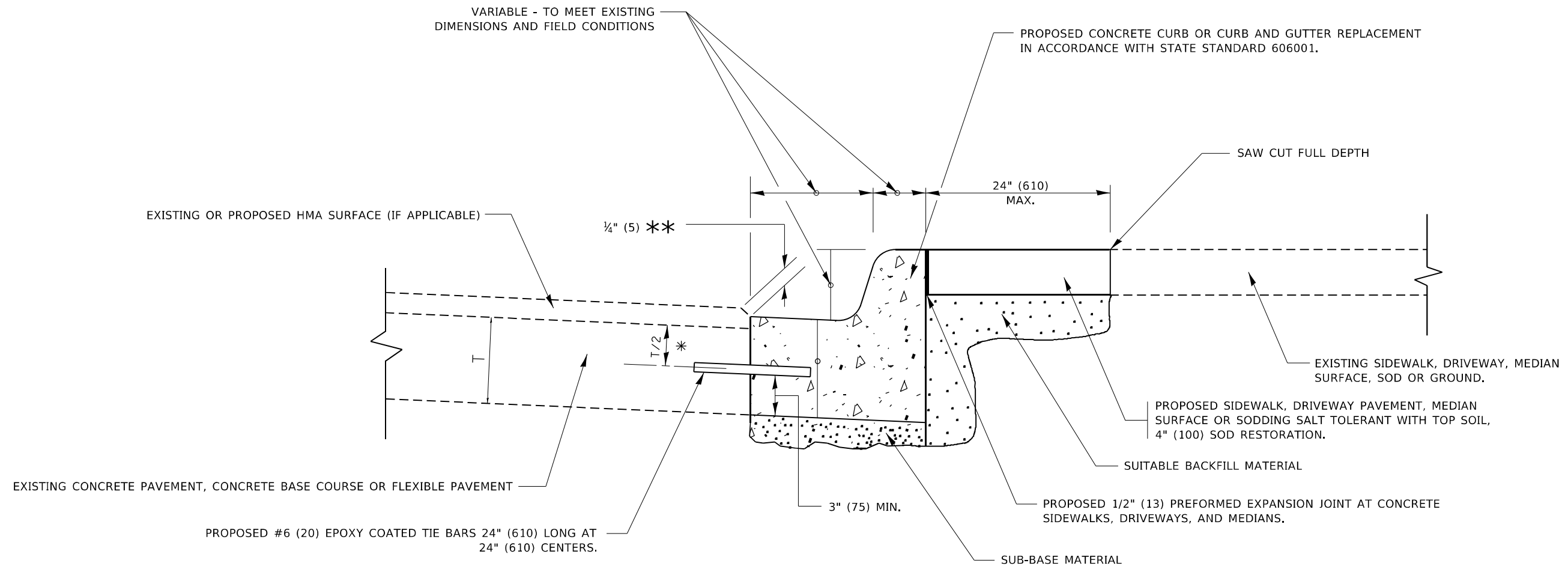
USER NAME = gorengautab	DESIGNED - R. SHAH	REVISED - A. ABBAS 04-27-98
	DRAWN -	REVISED - R. BORO 01-01-07
PLOT SCALE = 100,0000' / in.	CHECKED -	REVISED - R. BORO 09-04-07
PLOT DATE = 3/10/2021	DATE - 10-25-94	REVISED - K. ENG 10-27-08

STATE OF ILLINOIS
DEPARTMENT OF TRANSPORTATION

PAVEMENT PATCHING FOR
HMA SURFACED PAVEMENT

SCALE: NONE SHEET 1 OF 1 SHEETS STA. TO STA.

F.A.P. RTE.	SECTION	COUNTY	TOTAL SHEETS	SHEET NO.
346	2020-086-R5	LAKE	22	14
BD400-04 (BD-22)			CONTRACT NO. 62L64	
ILLINOIS FED. AID PROJECT				



- * 3" (75) MINIMUM FROM TOP AND BOTTOM OF THE CONCRETE PAVEMENT OR BASE COURSE.
- ** IF THE FINAL SURFACE OF THE PAVEMENT IS CONCRETE, THE GUTTER IS TO BE FLUSH WITH THE PAVEMENT.

CURB OR CURB AND GUTTER REMOVAL AND REPLACEMENT

ALL DIMENSIONS ARE IN INCHES (MILLIMETERS) UNLESS OTHERWISE SHOWN.

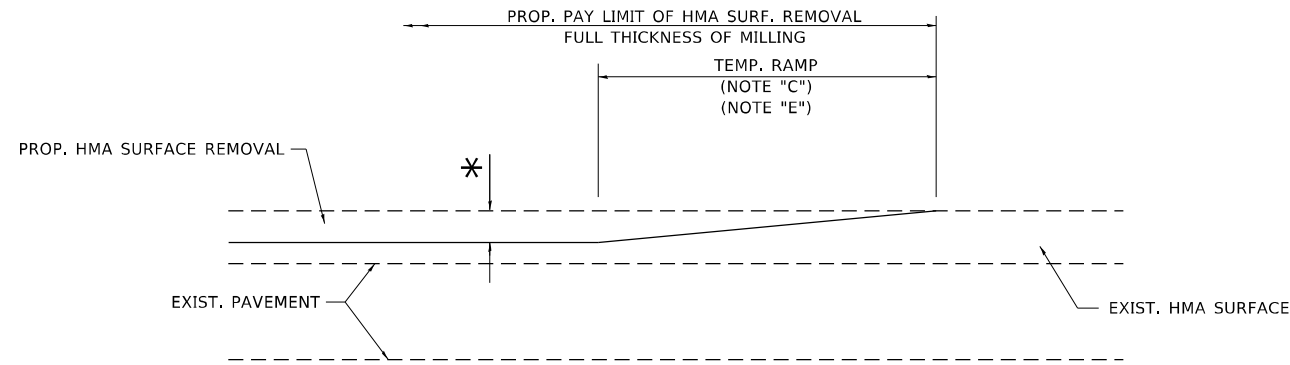
MODEL: Default
FILE NAME: p:\pub\mranon.dwg
PROJECT: 148520\CaddData\Design\BIS54.dgn
PROJECT: 148520\CaddData\Design\BIS54.dgn

USER NAME = gorengautab	DESIGNED - A. HOUSEH	REVISED - A. ABBAS 03-21-97
	DRAWN -	REVISED - M. GOMEZ 01-22-01
PLOT SCALE = 100,0000' / in.	CHECKED -	REVISED - R. BORO 12-15-09
PLOT DATE = 3/10/2021	DATE - 03-11-94	REVISED - K. SMITH 07-11-19

**STATE OF ILLINOIS
DEPARTMENT OF TRANSPORTATION**

CURB OR CURB AND GUTTER REMOVAL AND REPLACEMENT			
SCALE: NONE	SHEET 1	OF 1 SHEETS	STA. TO STA.

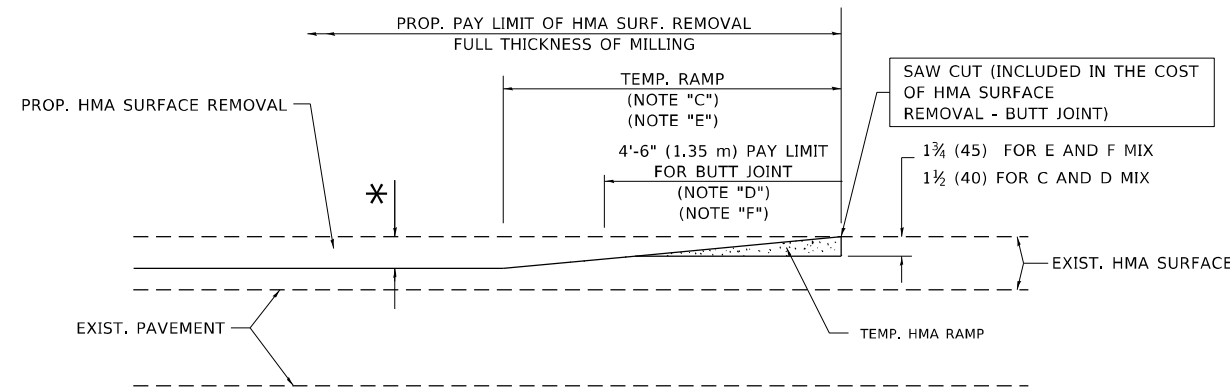
F.A.P. RTE.	SECTION	COUNTY	TOTAL SHEETS	SHEET NO.
346	2020-086-R5	LAKE	22	15
BD600-06 (BD-24)		CONTRACT NO. 62L64		
ILLINOIS FED. AID PROJECT				



MILLED TEMPORARY RAMP

(FOR BUTT JOINT AND HMA TAPER SEE DETAIL BELOW)

OPTION 1

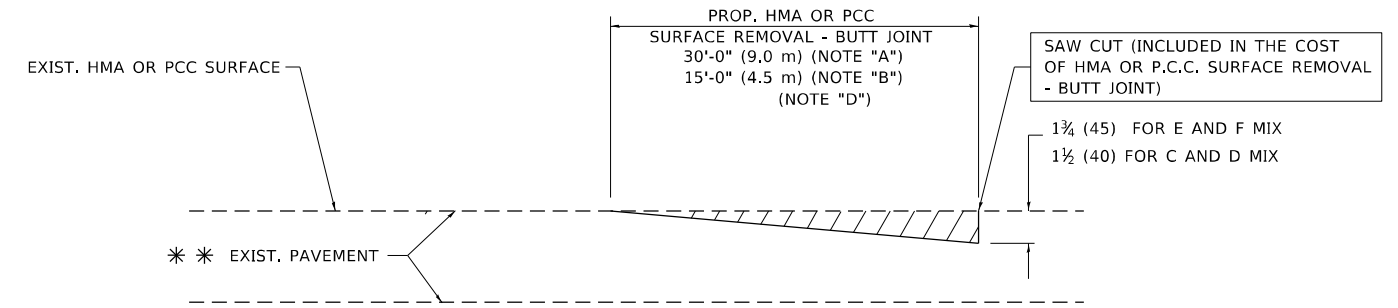


HMA CONSTRUCTED TEMPORARY RAMP

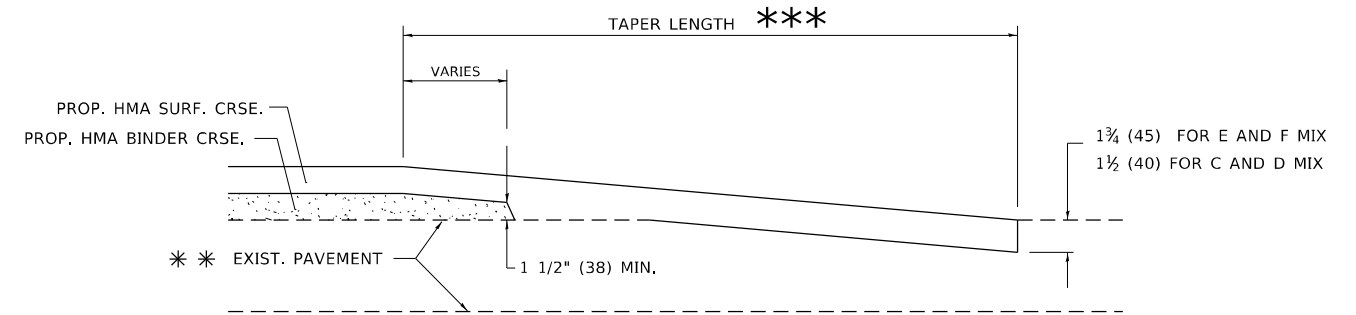
(FOR BUTT JOINT AND HMA TAPER SEE DETAIL BELOW)

OPTION 2

TYPICAL TEMPORARY RAMP



BUTT JOINT DETAIL



HMA TAPER DETAIL

TYPICAL BUTT JOINT AND HMA TAPER FOR RESURFACING ONLY

*** PC CONCRETE, HMA OR HMA RESURFACED PAVEMENT.

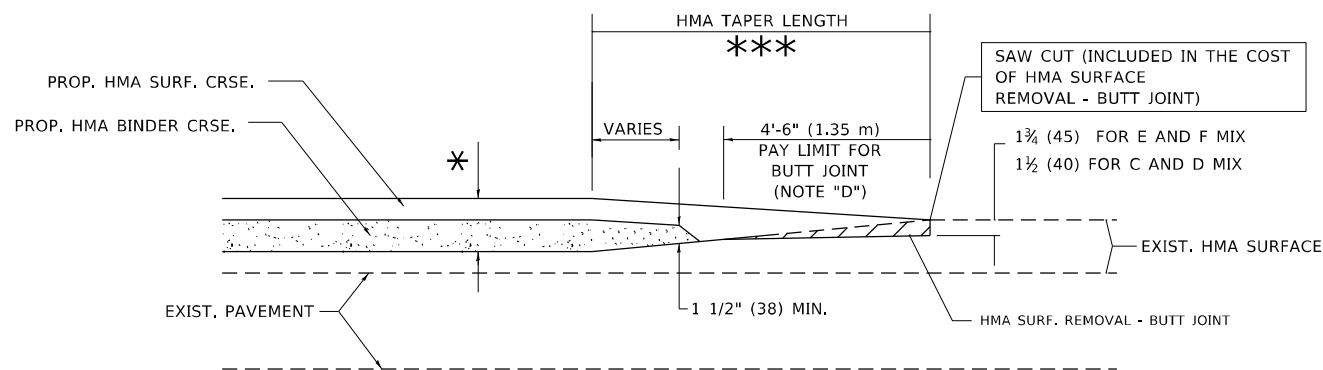
NOTES

- A. MAINLINE ROADWAYS AND MAJOR SIDE ROADS.
- B. MINOR SIDE ROADS.
- C. THE TEMP. RAMP SHALL BE CONSTRUCTED IMMEDIATELY UPON REMOVAL OF THE EXISTING HMA SURFACE.
- D. THE BUTT JOINT SHALL BE CONSTRUCTED IMMEDIATELY PRIOR TO PLACING THE PROPOSED HMA COURSES.
- E. TAPER THE TEMP. RAMP AT A RATE OF 3'-0" (900 mm) PER 1 INCH (25 mm) OF MILLING THICKNESS.
- F. INSTALLATION AND REMOVAL OF THE 4'-6" (1.35 m) TEMP. RAMP IS INCLUDED IN COST OF HMA SURFACE REMOVAL - BUTT JOINT.
* SEE TYPICAL SECTIONS FOR MILLING THICKNESS.
- G. SEE ARTICLE 406.08 AND 406.14 OF THE STANDARD SPECIFICATIONS FOR "HMA AND/OR PCC SURFACE REMOVAL, BUTT JOINT".
*** 20'-0" (6.1 m) PER 1 (25) RESURFACING (NOTE "A")
10'-0" (3.0 m) PER 1 (25) RESURFACING (NOTE "B")

BASIS OF PAYMENT

THE BUTT JOINT WILL BE PAID FOR AT THE CONTRACT UNIT PRICE PER SQUARE YARD (SQUARE METER) FOR "HOT-MIX ASPHALT SURFACE REMOVAL - BUTT JOINT" OR FOR "PORTLAND CEMENT CONCRETE SURFACE REMOVAL - BUTT JOINT".

ALL DIMENSIONS ARE IN INCHES (MILLIMETERS) UNLESS OTHERWISE SHOWN.



BUTT JOINT AND HMA TAPER

TYPICAL BUTT JOINT AND HMA TAPER FOR MILLING AND RESURFACING

MODEL: Default
FILE NAME: p:\mhaman\room.dca\illinois.gov\PIWDOT\Documents\IBDOT_Offices\Distrefc_1\Projects\ID 148520\CADD\Bata\Design\Distrefc.dgn

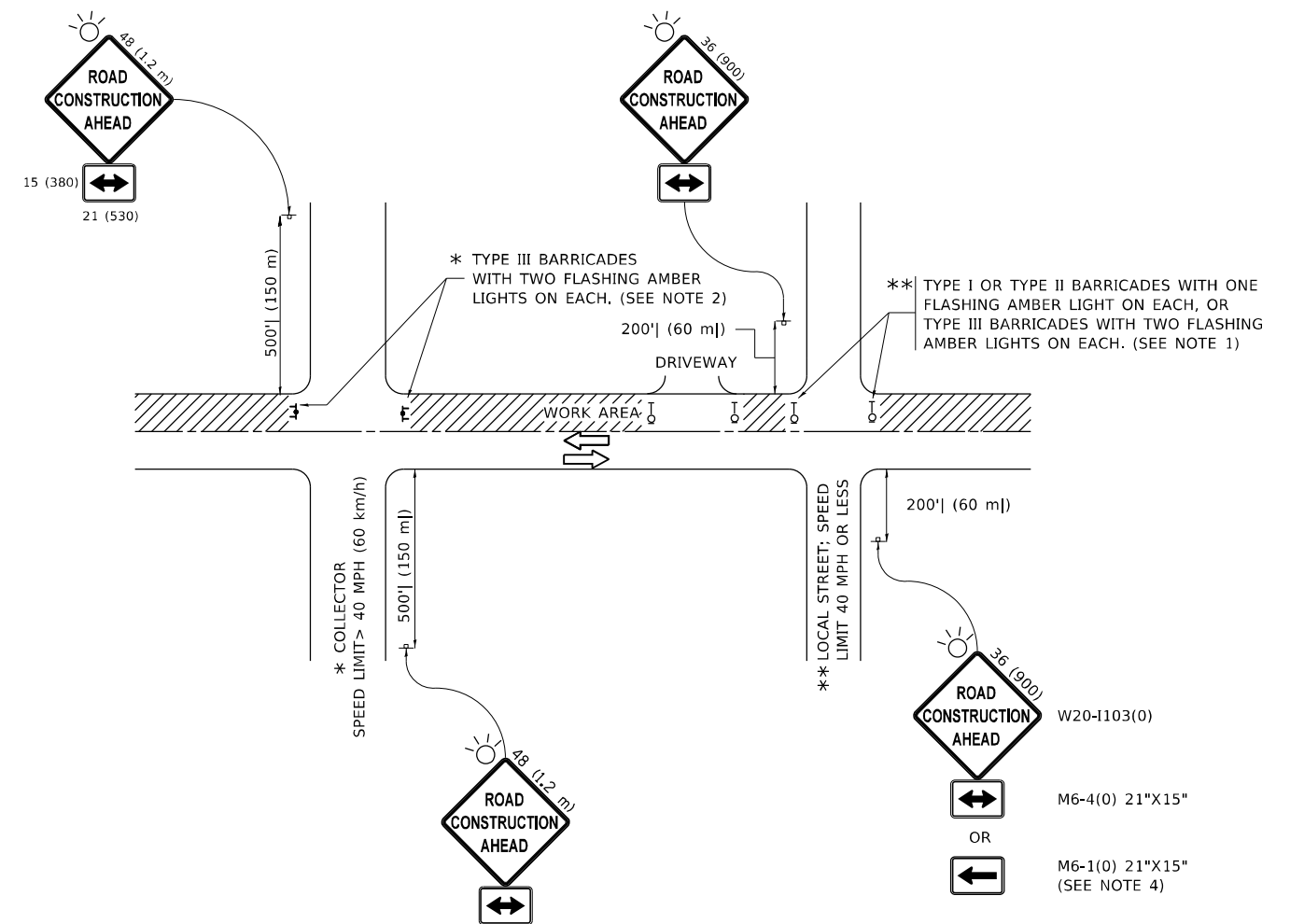
USER NAME = gorengautab	DESIGNED - M. DE YONG	REVISED - R. SHAH 10-25-94
	DRAWN -	REVISED - A. ABBAS 03-21-97
PLOT SCALE = 100,0000' / in.	CHECKED -	REVISED - M. GOMEZ 04-06-01
PLOT DATE = 3/10/2021	DATE - 06-13-90	REVISED - R.BORO 01-01-07

**STATE OF ILLINOIS
DEPARTMENT OF TRANSPORTATION**

**BUTT JOINT AND
HMA TAPER DETAILS**

SCALE: NONE SHEET 1 OF 1 SHEETS STA. TO STA.

F.A.P. RTE.	SECTION	COUNTY	TOTAL SHEETS	SHEET NO.
346	2020-086-R5	LAKE	22	16
BD400-05 BD32		CONTRACT NO. 62L64		
ILLINOIS FED. AID PROJECT				



NOTES:

1. SIDE ROAD WITH A SPEED LIMIT OF 40 MPH (60 km/h) OR LESS AS SHOWN ON THE DRAWING AND AS DIRECTED BY THE ENGINEER:
 - a) ONE "ROAD CONSTRUCTION AHEAD" SIGN 36 x 36 (900x900) WITH A FLASHER MOUNTED ON IT APPROXIMATELY 200' (60 m) IN ADVANCE OF THE MAIN ROUTE.
 - b) THE CLOSED PORTION OF THE MAIN ROUTE SHALL BE PROTECTED BY BLOCKING WITH TYPE I, TYPE II OR TYPE III BARRICADES, 1/3 OF THE CROSS SECTION OF THE CLOSED PORTION.
2. SIDE ROAD WITH A SPEED LIMIT GREATER THAN 40 MPH (60 km/h) AS SHOWN ON THE DRAWING AND AS DIRECTED BY THE ENGINEER:
 - a) ONE "ROAD CONSTRUCTION AHEAD" SIGN 48 x 48 (1.2 m x 1.2 m) WITH A FLASHER MOUNTED ON IT APPROXIMATELY 500' (150 m) IN ADVANCE OF THE MAIN ROUTE.
 - b) BLOCKING WITH TYPE III BARRICADES, 1/2 OF THE CROSS SECTION OF THE CLOSED PORTION.
3. CONES MAY BE SUBSTITUTED FOR BARRICADES OR DRUMS AT HALF THE SPACING DURING DAY OPERATIONS. CONES SHALL BE A MINIMUM OF 28 (710) IN HEIGHT.
4. SIGNING AND THE WORK ZONE, A SINGLE HEADED ARROW (M6-1) SHALL BE USED IN LIEU OF THE DOUBLE HEADED ARROW (M6-4).
5. WHEN WORK IS BEING PERFORMED ON A SIDE ROAD OR DRIVEWAY, FOLLOW THE APPLICABLE STANDARD(S). THE DIRECTIONAL ARROW (M6-1 OR M6-4) SHALL BE COVERED OR REMOVED WHEN NO LONGER CONSISTENT WITH THE TRAFFIC CONTROL SET-UP.
6. ADVANCE WARNING SIGNS ARE TO BE OMITTED ON DRIVEWAYS UNLESS OTHERWISE SPECIFIED IN THE PLANS OR BY THE ENGINEER.
7. THE TRAFFIC CONTROL AND PROTECTION FOR SIDE ROADS, INTERSECTIONS, AND DRIVEWAYS SHALL BE INCLUDED IN THE COST OF SPECIFIED TRAFFIC CONTROL STANDARDS OR ITEMS.

All dimensions are in inches (millimeters) unless otherwise shown.

MODEL: Default
 FILE NAME: p:\data\mroom.dwt\illinois.gov\PWIDOT\Documents\DOT_Offices\Distrefc_1\Project\ID148520\CADDData\Design\Distrefc.dgn

USER NAME = gorengautab	DESIGNED - L.H.A.	REVISED - A. HOUSEH 10-15-96
PLOT SCALE = 100,0000' / in.	CHECKED -	REVISED - T. RAMMACHER 01-06-00
PLOT DATE = 3/10/2021	DATE - 06-89	REVISED - A. SCHUETZE 07-01-13
		REVISED - A. SCHUETZE 09-15-16

**STATE OF ILLINOIS
DEPARTMENT OF TRANSPORTATION**

**TRAFFIC CONTROL AND PROTECTION FOR
SIDE ROADS, INTERSECTIONS, AND DRIVEWAYS**

SCALE: NONE SHEET 1 OF 1 SHEETS STA. TO STA.

F.A.P. RTE.	SECTION	COUNTY	TOTAL SHEETS	SHEET NO.
346	2020-86-R5	LAKE	22	17
TC-10			CONTRACT NO. 62L64	
ILLINOIS FED. AID PROJECT				

TURN BAY ENTRANCE AT START OF LANE CLOSURE TAPER

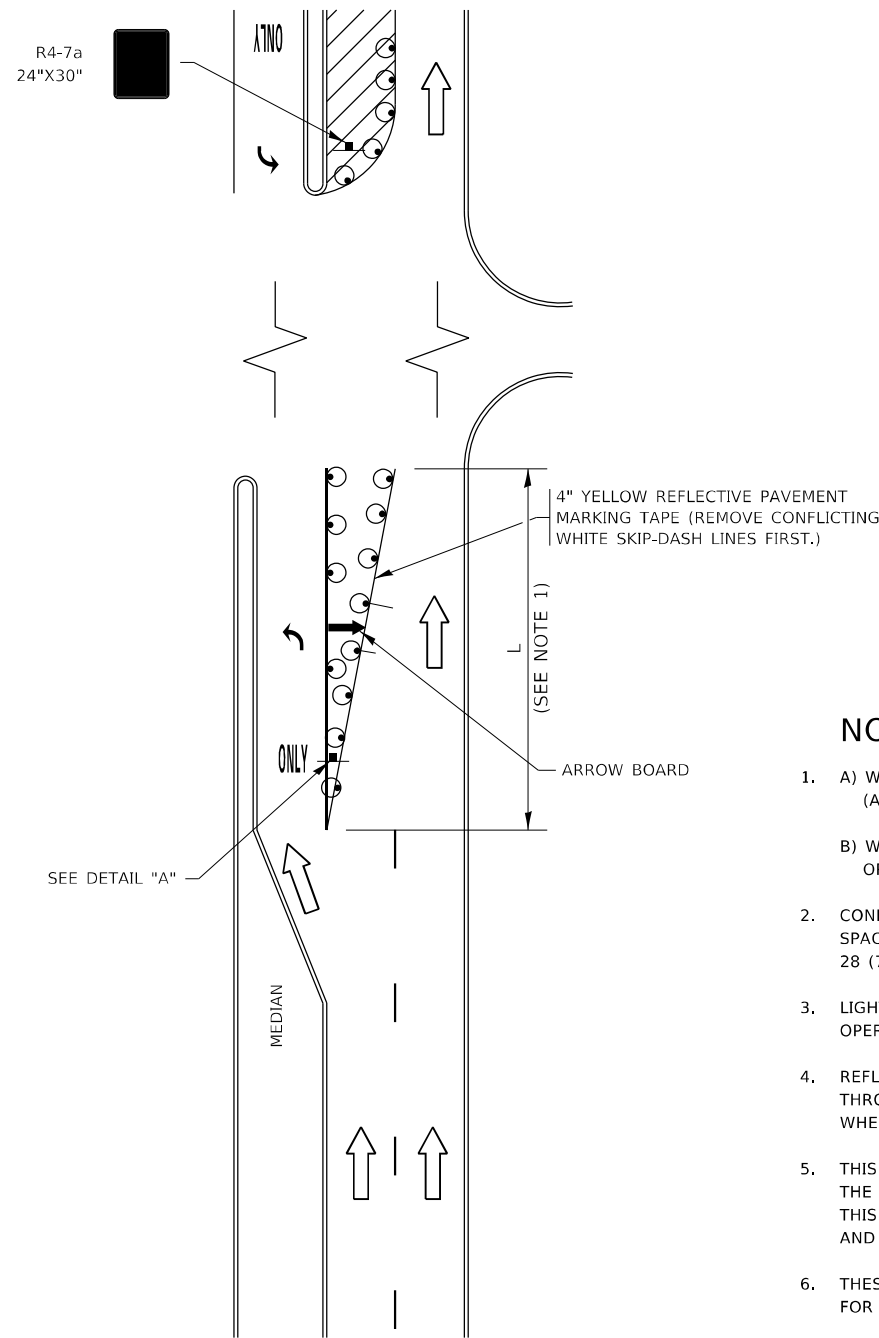


FIGURE 1

TURN BAY ENTRANCE WITHIN A LANE CLOSURE

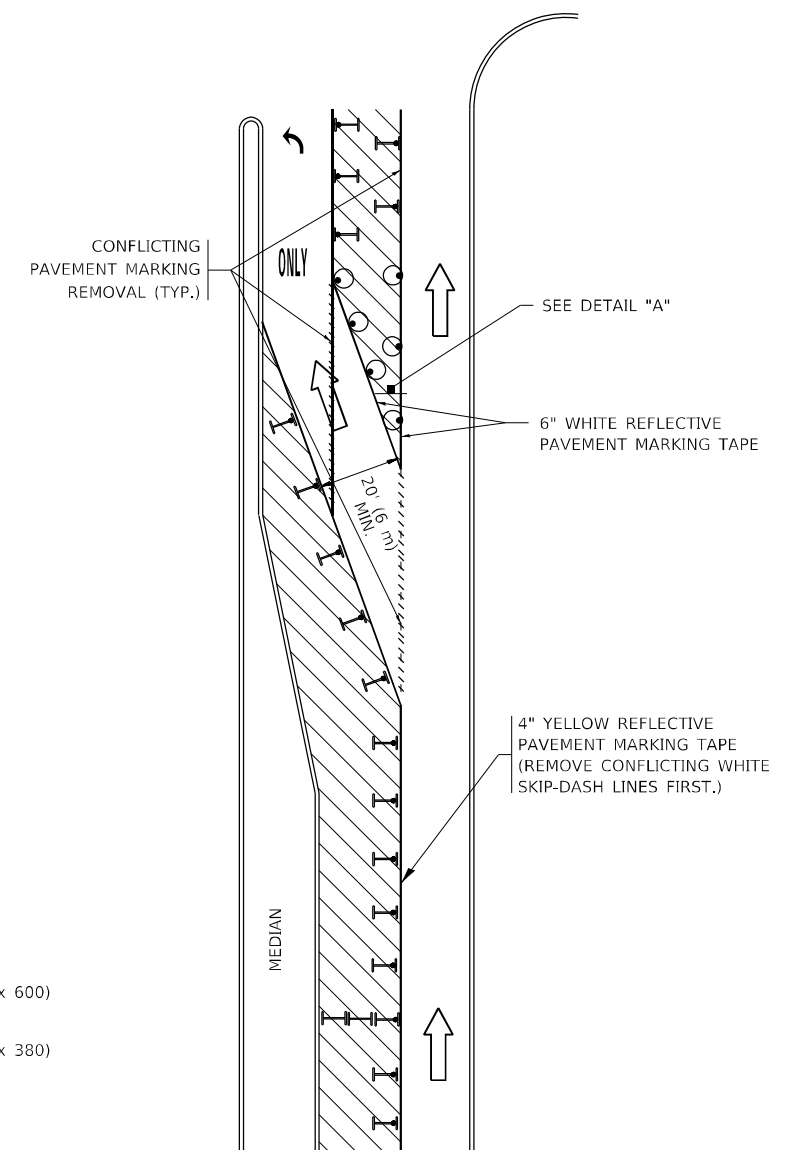
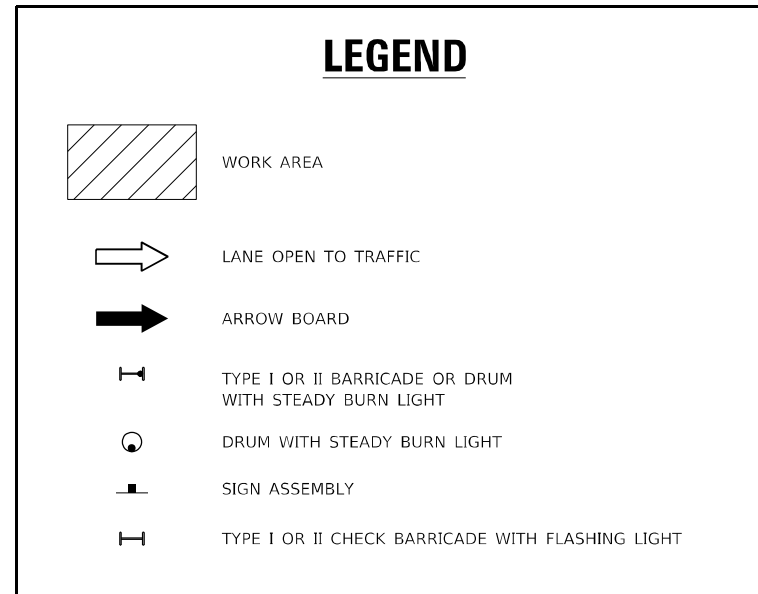
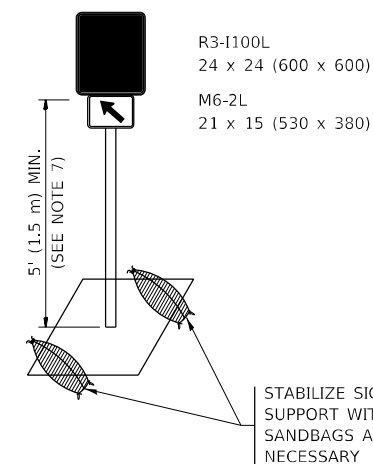


FIGURE 2



NOTES:

1. A) WHEN "L" IS \leq THE STORAGE LENGTH OF THE TURN LANE (AS SHOWN IN FIG. 1), USE FIGURE 1.
B) WHEN "L" IS $>$ THE STORAGE LENGTH OF THE TURN LANE OR THE TURN LANE IS WITHIN THE LANE CLOSURE, USE FIGURE 2.
2. CONES MAY BE SUBSTITUTED FOR BARRICADES OR DRUMS AT HALF THE SPACING DURING DAY OPERATIONS. CONES SHALL BE A MINIMUM OF 28 (710) IN HEIGHT.
3. LIGHTS WILL NOT BE REQUIRED ON BARRICADES OR DRUMS FOR DAY OPERATIONS. ALL LIGHTS SHALL BE MONODIRECTIONAL.
4. REFLECTIVE TEMPORARY PAVEMENT MARKINGS SHALL BE PLACED THROUGHOUT THE BARRICADED AREAS OF EACH TURN BAY AS SHOWN WHERE THE CLOSURE TIME IS GREATER THAN FOURTEEN (14) DAYS.
5. THIS APPLICATION ALSO APPLIES WHEN WORK IS BEING PERFORMED IN THE RIGHT LANE(S) AND THE RIGHT TURN BAY IS TO REMAIN OPEN. UNDER THIS CONDITION, "RIGHT TURN LANE" R3-1100R 24 x 24 (600 x 600) AND M6-2R 21 x 15 (530 x 380) SHALL BE USED.
6. THESE CONTROLS SHALL SUPPLEMENT MAINLINE TRAFFIC CONTROL FOR LANE CLOSURES.
7. THE SIGNS SHALL BE MOUNTED ABOVE THE BARRICADES/DRUMS ON SEPARATE SIGN SUPPORTS THAT MEET NCHRP 350 OR MASH REQUIREMENTS.
8. TRAFFIC CONTROL AND PROTECTION AT TURN BAYS (TO REMAIN OPEN TO TRAFFIC) SHALL BE INCLUDED IN THE COST OF SPECIFIED TRAFFIC CONTROL STANDARDS OR ITEMS.



DETAIL A

All dimensions are in inches (millimeters) unless otherwise shown.

MODEL: Default
FILE NAME: p:\pub\mcom.dwt\illinois.gov\PIWDOT\Documents\DOT_Offices\Distrefc_1\Projects\148520\CaddData\Design\Distrefc.dgn

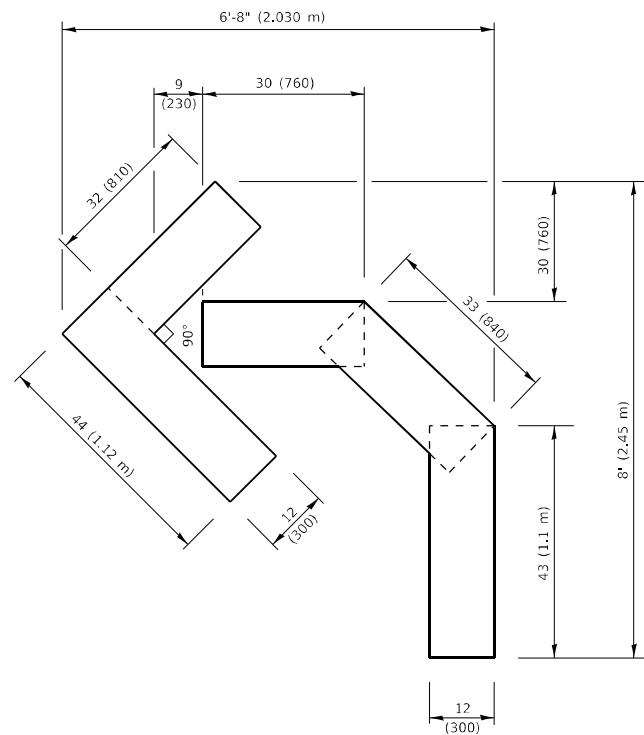
USER NAME = gorengautab	DESIGNED - T. RAMMACHER 09-08-94	REVISED - R. BORO 09-14-09
	DRAWN - A. HOUSEH 11-07-95	REVISED - A. SCHUETZE 07-01-13
PLOT SCALE = 100,0000' / in.	CHECKED - A. HOUSEH 10-12-96	REVISED - A. SCHUETZE 09-15-16
PLOT DATE = 3/10/2021	DATE - T. RAMMACHER 01-06-00	REVISED -

**STATE OF ILLINOIS
DEPARTMENT OF TRANSPORTATION**

**TRAFFIC CONTROL AND PROTECTION AT TURN BAYS
(TO REMAIN OPEN TO TRAFFIC)**

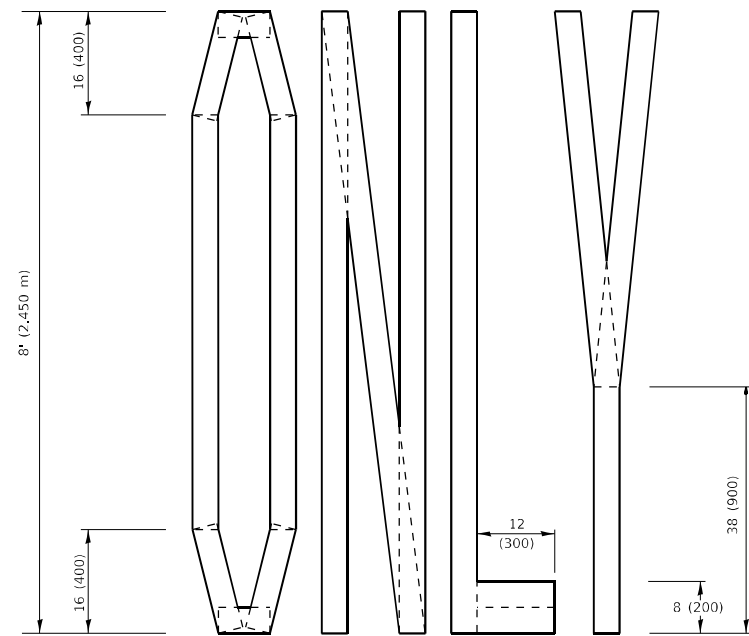
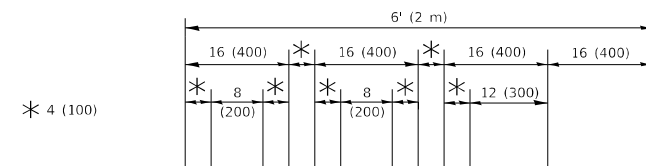
SCALE: NONE SHEET 1 OF 1 SHEETS STA. TO STA.

F.A.P. RTE.	SECTION	COUNTY	TOTAL SHEETS	SHEET NO.
346	2020-86-R5	LAKE	22	20
TC-14		CONTRACT NO. 62L64		
ILLINOIS FED. AID PROJECT				



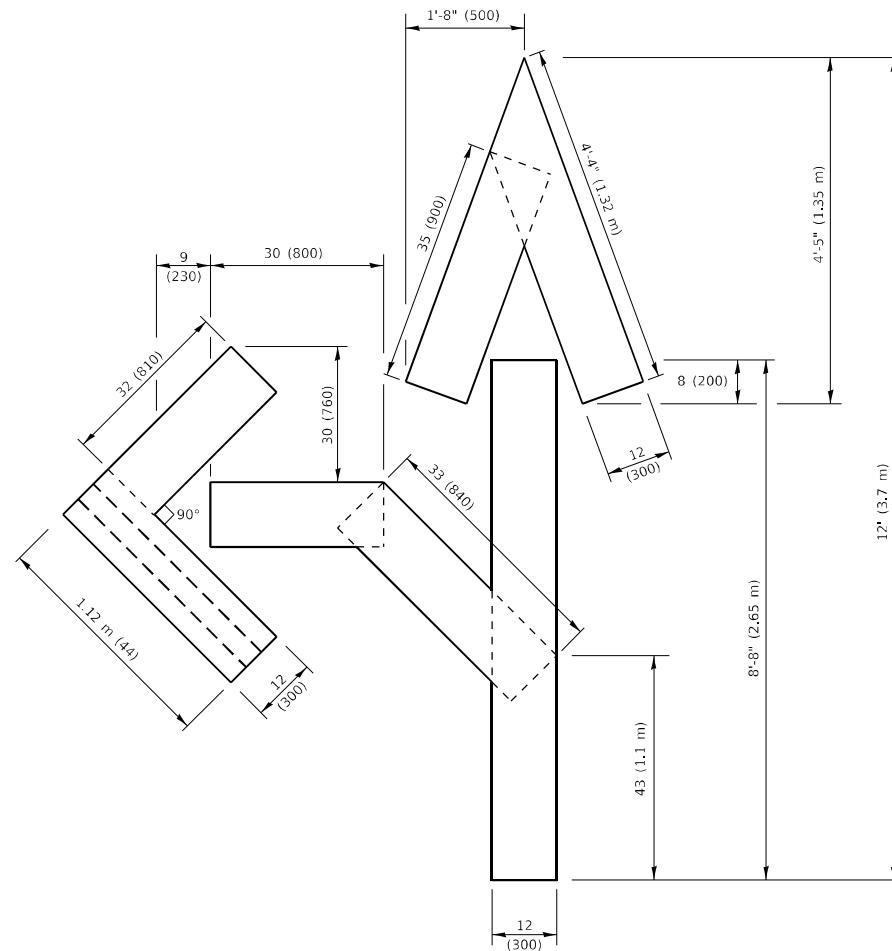
QUANTITY

4 (100) LINE = 45.5 ft. (13.9 m)
15.2 sq. ft. (1.41 sq. m)



QUANTITY

4 (100) LINE = 64.1 ft. (19.5 m)
21.4 sq. ft. (1.99 sq. m)

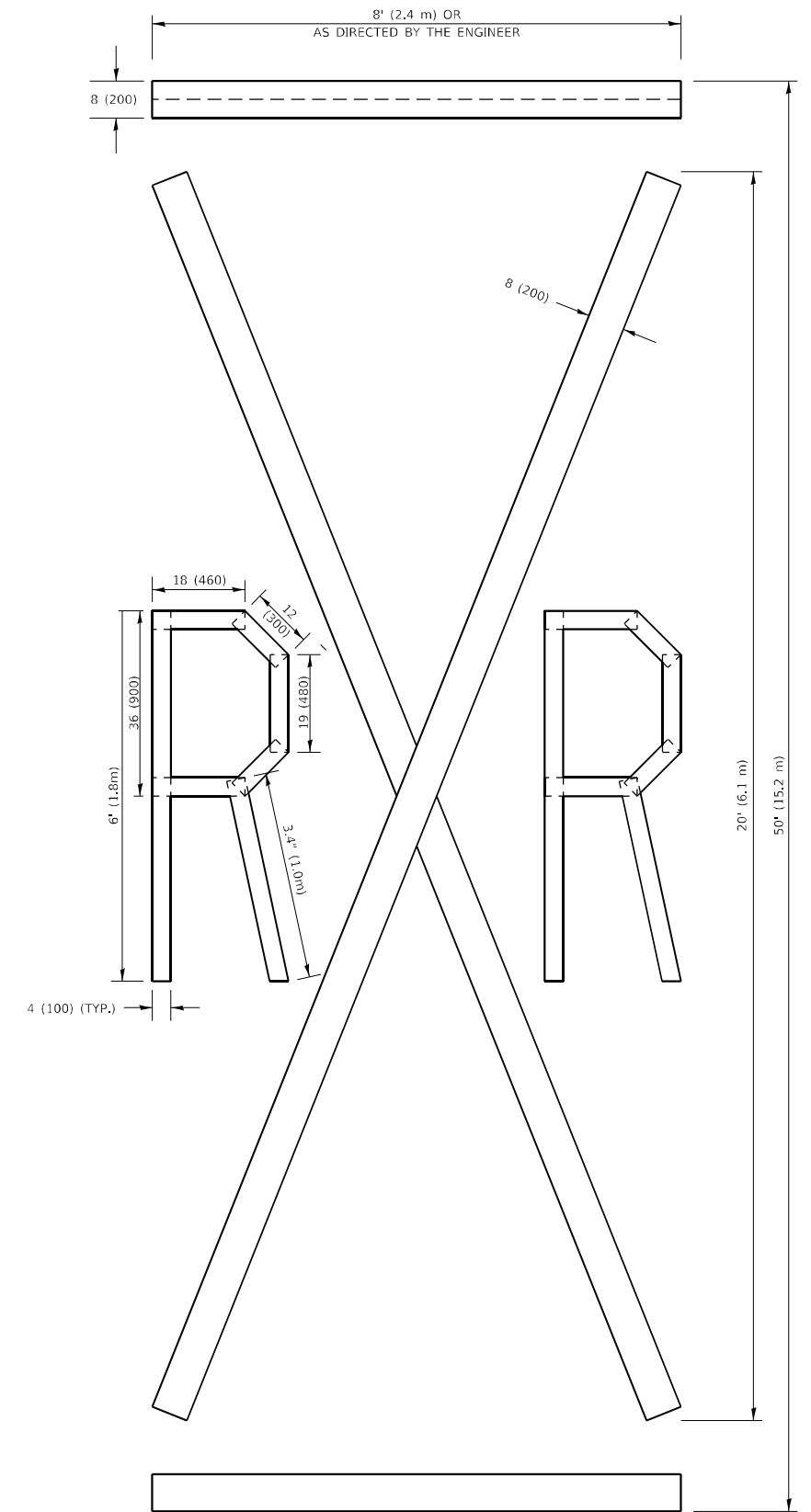


QUANTITY

4 (100) LINE = 82.5 ft. (25.1 m)
27.5 sq. ft. (2.53 sq. m)

NOTE:

ALL QUANTITIES OF PLACEMENT ARE REPRESENTED IN LINEAR FEET OF 4" LINES TO MATCH THE 4" TEMPORARY TAPE PAY ITEM AND REPRESENTS THE TOTAL QUANTITY OF 4" TAPE REQUIRED.



QUANTITY

4 (100) LINE = 225.9 ft. (68.9 m)
75.3 sq. ft. (6.99 sq. m)

All dimensions are in inches (millimeters) unless otherwise shown.

MODEL: Default
FILE NAME: P:\pub\barcom_dot_illinois\gov\PI\DOT\Documents\DOT_Offices\District 1\Projects\CD148520\CADD\ata\Design\B6555.dwg

USER NAME = gorenautab	DESIGNED -	REVISED - T. RAMMACHER 03-02-98
	DRAWN -	REVISED - E. GOMEZ 08-28-00
PLOT SCALE = 100,0010 ' / in.	CHECKED -	REVISED - E. GOMEZ 08-28-00
PLOT DATE = 3/10/2021	DATE - 09-18-94	REVISED - A. SCHUETZE 09-15-16

**STATE OF ILLINOIS
DEPARTMENT OF TRANSPORTATION**

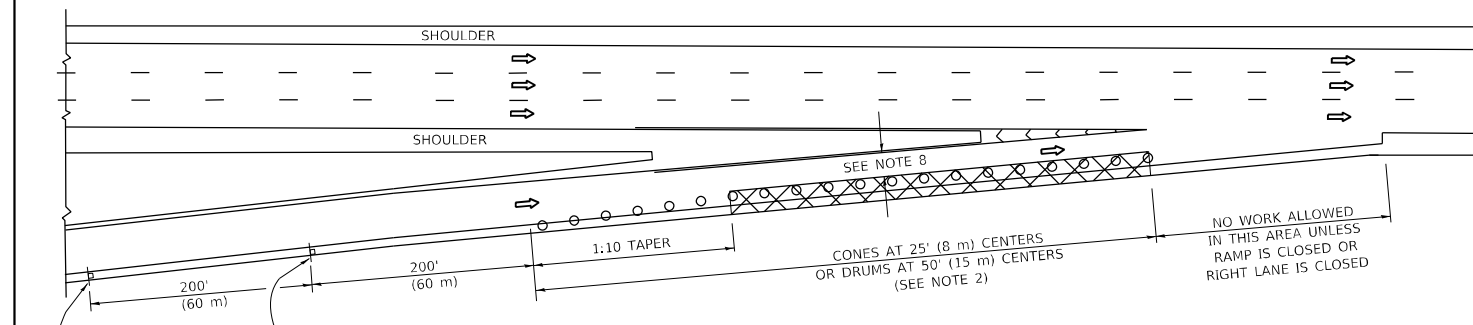
SHORT TERM PAVEMENT MARKING LETTERS AND SYMBOLS

SCALE: NONE SHEET 1 OF 1 SHEETS STA. TO STA.

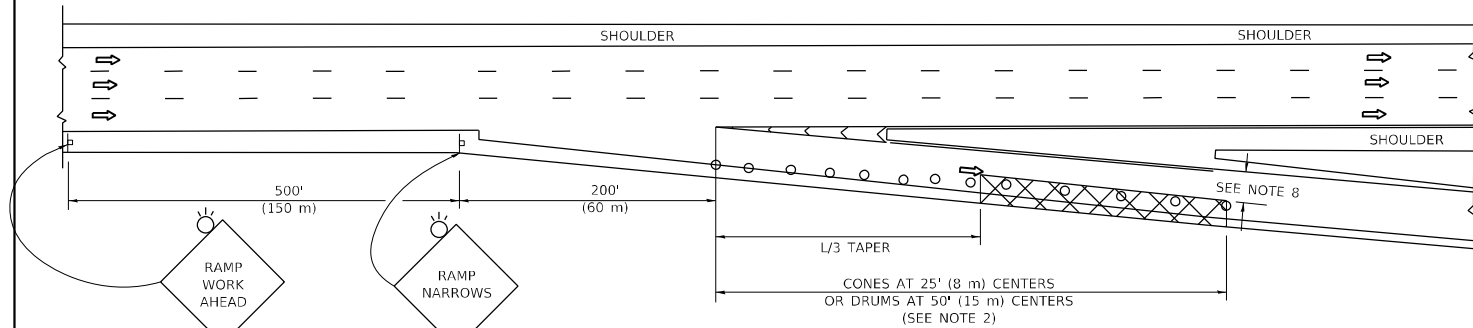
F.A.P. RTE.	SECTION	COUNTY	TOTAL SHEETS	SHEET NO.
346	2020-086-RS	LAKE	22	21
TC-16		CONTRACT NO. 62L64		
ILLINOIS FED. AID PROJECT				

PARTIAL RAMP CLOSURE DETAILS

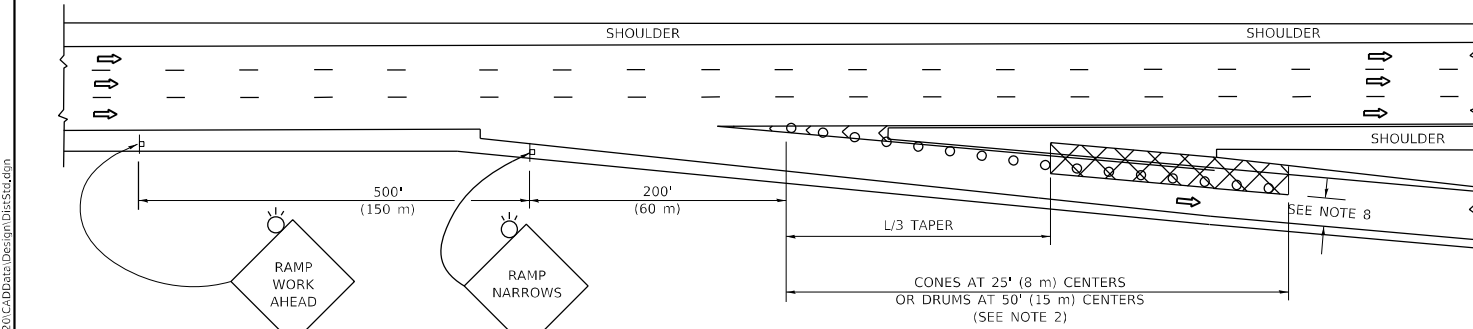
SHOULDER CLOSURE DETAILS



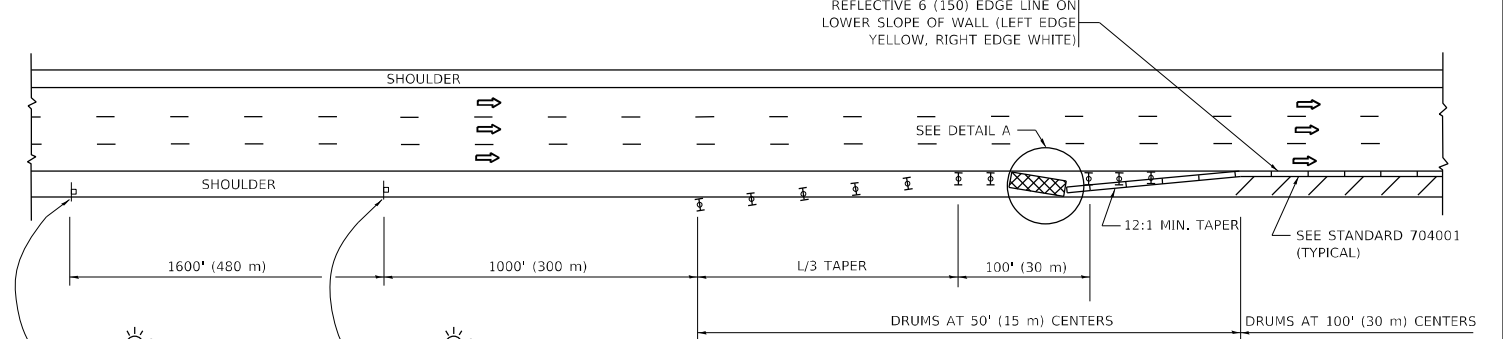
TYPICAL ENTRANCE RAMP



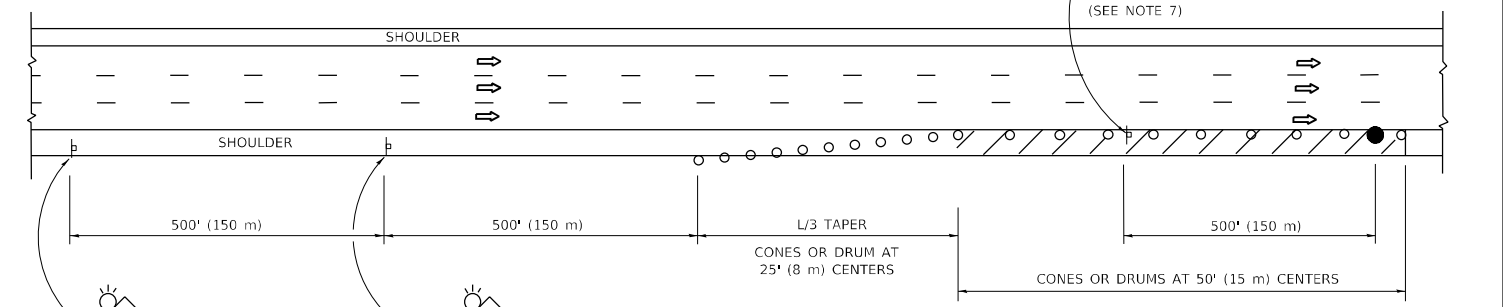
TYPICAL EXIT RAMP



TYPICAL EXIT RAMP

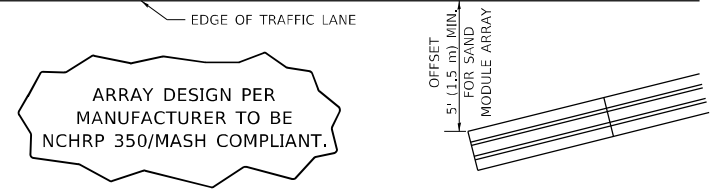


PERMANENT SHOULDER CLOSURE



TEMPORARY SHOULDER CLOSURE

THIS DETAIL IS USED WHERE:
 1. VEHICLES, EQUIPMENT, WORKERS OR THEIR ACTIVITIES ENCR OACH IN AN AREA CLOSER THAN 15' (4.5 m) TO THE EDGE OF PAVEMENT FOR A PERIOD IN EXCESS OF 15 MINUTES.



**DETAIL "A"
 IMPACT ATTENUATOR, TEMPORARY
 (SEE NOTE 5)**

SYMBOLS

- ACTIVE WORK AREA
- SIGN ON PORTABLE OR PERMANENT SUPPORT
- FLAGGER WITH CONTROL SIGN
- TYPE II BARRICADE OR DRUM
- CONE, DRUM OR BARRICADE
- IMPACT ATTENUATOR OF TYPE AND TEST LEVEL SPECIFIED

GENERAL NOTES:

1. THE "L" DISTANCE EQUALS:

SPEED LIMIT		FORMULAS	
45 mph (80 km/h)	METRIC	L=0.65(W)/S	ENGLISH
OR GREATER:		L=(W)/S	

W = WIDTH OF OFFSET IN FEET (METERS)
 S = NORMAL POSTED SPEED MPH (KM/H)
2. TYPE II BARRICADES OR DRUMS ARE REQUIRED FOR ALL NIGHTTIME CLOSURES. TYPE II BARRICADES OR DRUMS WITH MONODIRECTIONAL STEADY BURN LIGHTS ARE REQUIRED FOR DELINEATING OBSTACLES, EXCAVATIONS, OR HAZARDS EXCEEDING 100 FT (30m) IN LENGTH AT NIGHT.
3. ALL SIGNS SHALL BE POST MOUNTED IF THE CLOSURE TIME EXCEEDS FOUR DAYS.
4. FLASHING LIGHTS SHALL BE USED DURING THE HOURS OF DARKNESS AND SHALL BE INSTALLED ABOVE THE FIRST TWO SETS OF SIGNS.

5. THE IMPACT ATTENUATOR, TEMPORARY IS NOT REQUIRED WHEN THE TEMPORARY CONCRETE BARRIER WALL IS PROTECTED BY OR IS TIED INTO THE EXISTING GUARDRAIL. IF OFFSET IS LESS THAN 5 FEET USE NARROW USE TYPE DEVICE TO MEET NCHRP350/MASH.
6. AUTHORIZATION FROM THE DISTRICT'S BUREAU OF TRAFFIC IS REQUIRED FOR ALL FREEWAY CLOSURES.
7. THE FLAGGER AND FLAGGER SIGN ARE REQUIRED AT THE ABOVE WORK SITES WHEN:
 - a. FOUR OR MORE WORK VEHICLES ENTER THE TRAFFIC LANES IN A ONE HOUR PERIOD.
 - b. THE WORK AVTIVITY REQUIRES FREQUENT ENCR OACHMENT INTO THE LANE OPEN TO TRAFFIC.
 THE FLAGGER SHALL BE STATIONED APPROXIMATELY 100' (30 m) TO 200' (60 m) IN ADVANCE OF THE WORKERS.

8. 12' MIN. WIDTH TANGENT SECTION
16' MIN. WIDTH CURVE SECTION.
9. TEMPORARY SHOULDER AND NON-SYSTEM INTERCHANGE PARTIAL RAMP CLOSURES ARE ALLOWED WEEKDAYS BETWEEN 9:00 A.M. AND 3:00 P.M. AND BETWEEN 7:00 P.M. AND 5:00 A.M. OR AS APPROVED BY THE EXPRESSWAY TRAFFIC OPERATIONS ENGINEER. PERMANENT SHOULDER AND PARTIAL RAMP CLOSURES WILL ONLY BE PERMITTED IF CALLED FOR IN THE PLANS OR AS APPROVED BY THE EXPRESSWAY OPERATIONS ENGINEER.

ALL DIMENSIONS ARE IN INCHES (MILLIMETERS) UNLESS OTHERWISE SHOWN.

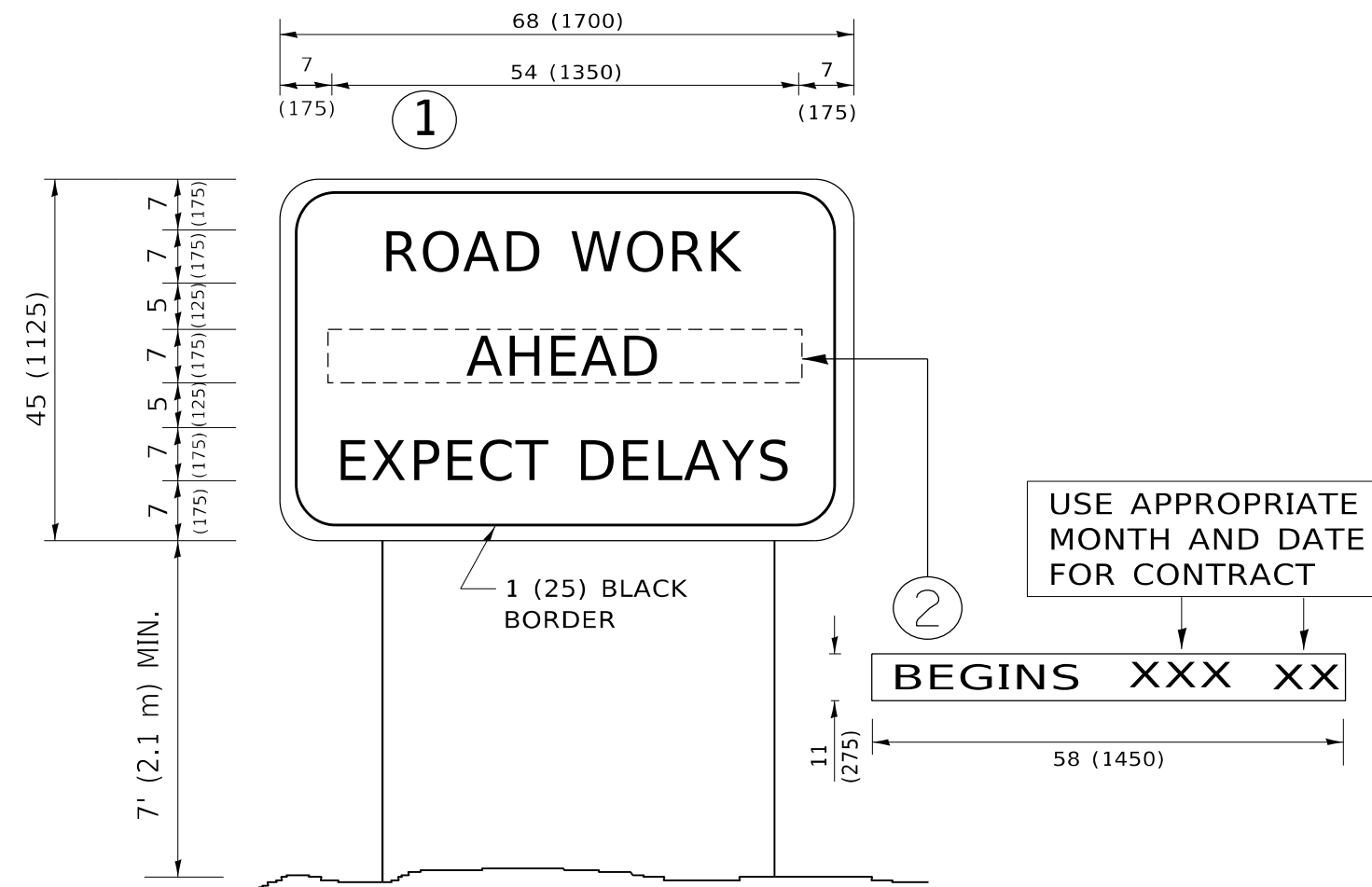
MODEL: Default
 FILE NAME: p:\mhammond.dwg
 PROJECT: 2020-086-RS
 PROJECT DATE: 3/11/2021

USER NAME = gorengautab	DESIGNED -	REVISED - S.P.B. 12-09
	DRAWN - D.W.S.	REVISED - M.D. 06-13
PLOT SCALE = 100,0000' / in.	CHECKED -	REVISED - M.D. 01-18
PLOT DATE = 3/11/2021	DATE - 11-96	REVISED - M.D. 10-20

**STATE OF ILLINOIS
 DEPARTMENT OF TRANSPORTATION**

TRAFFIC CONTROL DETAILS FOR FREEWAY SHOULDER CLOSURES AND PARTIAL RAMP CLOSURES			
SCALE: NONE	SHEET 1	OF 1 SHEETS	STA. TO STA.

F.A. RTE.	SECTION	COUNTY	TOTAL SHEETS	SHEET NO.
346	2020-086-RS	LAKE	22	21A
TC-17		CONTRACT NO. 62L64		
ILLINOIS FED. AID PROJECT				



NOTES:

1. USE BLACK LETTERING ON ORANGE BACKGROUND.
2. ERECT SIGNS IN ADVANCE OF THE LOCATION FOR THE "ROAD CONSTRUCTION AHEAD" SIGN AT LOCATIONS AS DIRECTED BY THE ENGINEER.
3. ERECT SIGN ① WITH INSTALLED PANEL ② ONE WEEK PRIOR TO THE START OF CONSTRUCTION.
4. REMOVE PANEL ② SOON AFTER THE START OF CONSTRUCTION.
5. SEE SPECIAL PROVISION FOR "TEMPORARY INFORMATION SIGNING" FOR ADDITIONAL INFORMATION.
6. ONE SIGN ASSEMBLY EQUALS 25.70 SQ. FT. (2.3 SQ. M.)
7. SHALL BE PAID FOR AS TEMPORARY INFORMATION SIGNING.

ALL DIMENSIONS ARE IN INCHES (MILLIMETERS) UNLESS OTHERWISE SHOWN.

MODEL: Default
 FILE NAME: p:\pub\mroom.dwt\illinois.gov\PWIDOT\Documents\DOT_Offices\Distric. 1\Project\148520\CADD\Design\Distric.dgn

USER NAME = gorengautab	DESIGNED -	REVISED - R. MIRS 09-15-97
	DRAWN -	REVISED - R. MIRS 12-11-97
PLOT SCALE = 100,0000 ' / in.	CHECKED -	REVISED - T. RAMMACHER 02-02-99
PLOT DATE = 3/10/2021	DATE -	REVISED - C. JUCIUS 01-31-07

**STATE OF ILLINOIS
DEPARTMENT OF TRANSPORTATION**

**ARTERIAL ROAD
INFORMATION SIGN**

SCALE: NONE SHEET 1 OF 1 SHEETS STA. TO STA.

F.A.P. RTE.	SECTION	COUNTY	TOTAL SHEETS	SHEET NO.
346	2020-086-RS	LAKE	22	22
TC-22		CONTRACT NO. 62L64		
ILLINOIS FED. AID PROJECT				