

STATE OF ILLINOIS
DEPARTMENT OF TRANSPORTATION

**PROPOSED
HIGHWAY PLANS**

FAP ROUTE 870: IL 53 (BOLINGBROOK DR)
DuPAGE COUNTY LINE TO I-55
SECTION: 2020-088-RS
PROJECT: NHPP-2ROT(379)
SMART OVERLAY, ADA IMPROVEMENTS
WILL COUNTY

C-91-285-20

FOR INDEX OF SHEETS, SEE SHEET NO. 2

PROJECT IS LOCATED IN THE
VILLAGE OF BOLINGBROOK

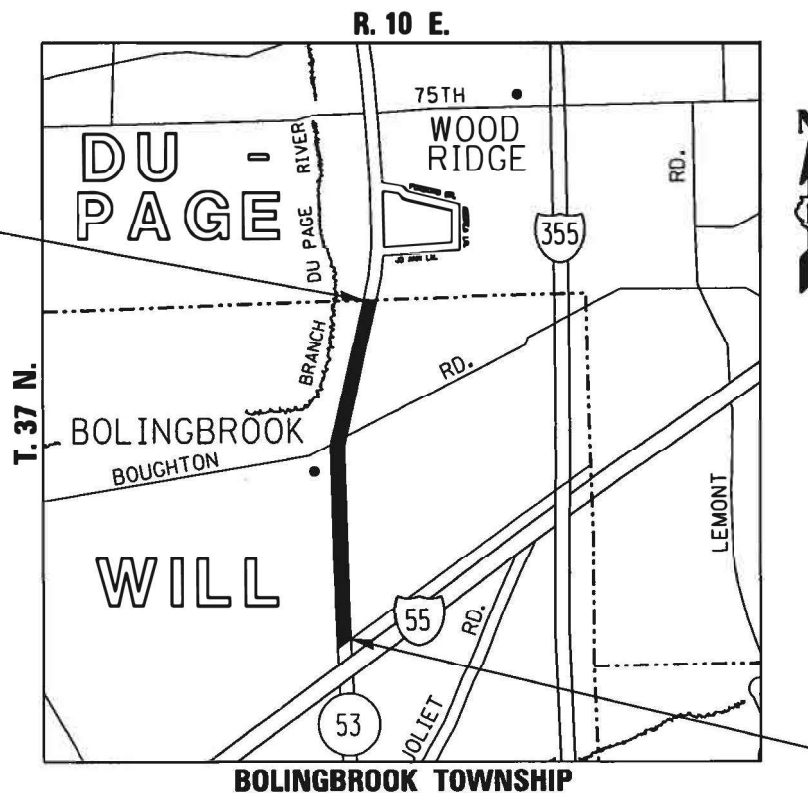
TRAFFIC DATA:

2019 ADT - 30100 TO 33200
SPEED LIMIT - 40 TO 45 MPH

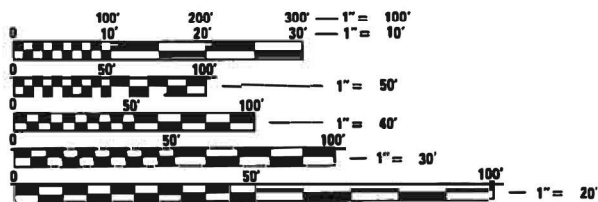
OMISSIONS:

ROYCE RD.
STA. 128+06 TO 138+99

PROJECT ENDS
STA. 172+02



PROJECT BEGINS
STA. 17+43



FULL SIZE PLANS HAVE BEEN PREPARED USING STANDARD
ENGINEERING SCALES. REDUCED SIZED PLANS WILL NOT
CONFORM TO STANDARD SCALES. IN MAKING MEASUREMENTS
ON REDUCED PLANS, THE ABOVE SCALES MAY BE USED.

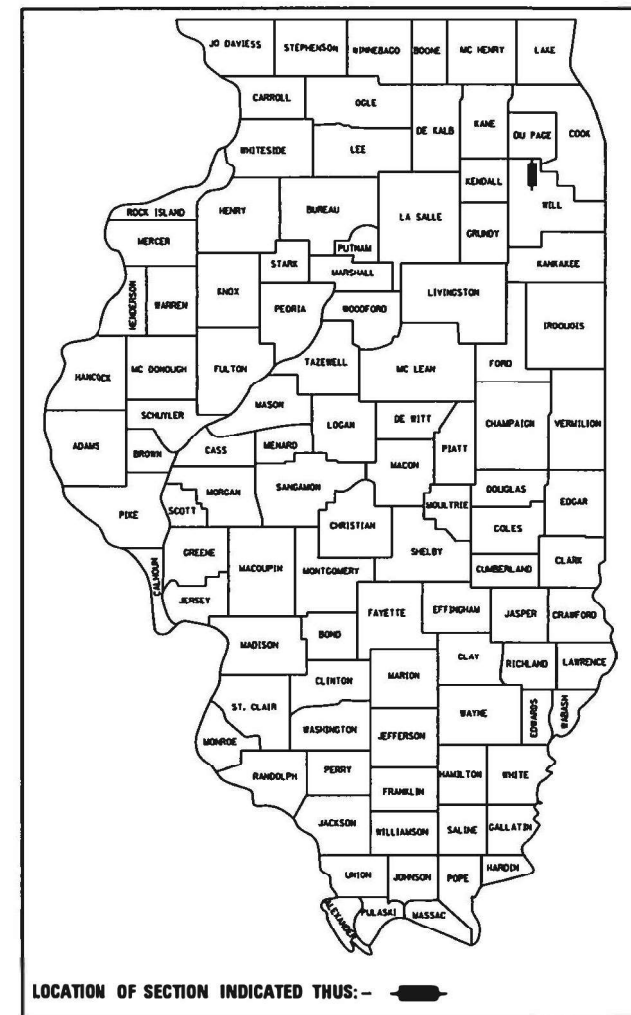
J.U.L.I.E.
JOINT UTILITY LOCATION INFORMATION FOR EXCAVATION
1-800-892-0123
OR 811

PROJECT ENGINEER: VESELIN VELICHKOV (847) 705-4432
PROJECT MANAGER: FAWAD AQUEEL (847) 705-4247
CONTRACT NO. 62L66

GROSS LENGTH OF PROJECT - 15459 FEET - 2.93 MILES
NET LENGTH OF PROJECT - 14366 FEET - 2.72 MILES

F.A.P. RTE.	SECTION	COUNTY	TOTAL SHEETS	SHEET NO.
870	2020-130-RS	WILL	50	1
FED. ROAD DIST. NO. 1 ILLINOIS			CONTRACT NO. 62L66	
* 50 + 1 = 51 TOTAL SHEETS				

D-91-487-20



LOCATION OF SECTION INDICATED THUS: - [shaded area]

STATE OF ILLINOIS
DEPARTMENT OF TRANSPORTATION

SUBMITTED March 9 20 21
April 20 21
JOSE RIOS, REGIONAL ENGINEER

May 7, 2021 [Signature]
ENGINEER OF DESIGN AND ENVIRONMENT

May 7, 2021 [Signature]
DIRECTOR OF HIGHWAYS PROJECT IMPLEMENTATION

PRINTED BY THE AUTHORITY
OF THE STATE OF ILLINOIS

INDEX OF SHEETS

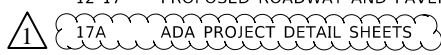
SHEET NO.	DESCRIPTION:
1	COVER SHEET
2	INDEX OF SHEETS, STATE STANDARDS, AND GENERAL NOTES
3-5	SUMMARY OF QUANTITIES
6-11	EXISTING AND PROPOSED TYPICAL SECTIONS
12-17	PROPOSED ROADWAY AND PAVEMENT MARKING PLANS
17A	ADA PROJECT DETAIL SHEETS
18-23	ADA RAMP SIDEWALK DETAILS
24	DETAILS FOR FRAMES AND LIDS ADJUSTMENTS WITH MILLING (BD-08)
25	PAVEMENT PATCHING FOR HMA SURFACED PAVEMENT (BD-22)
26	CURB OR CURB AND GUTTER REMOVAL AND REPLACEMENT (BD-24)
27	BUTT JOINT AND HMA TAPER DETAILS (BD-32)
28	HMA TAPER AT EDGE OF P.C.C. PAVEMENT (BD-33)
29	ENTRANCE RAMP AND EXIT RAMP CLOSURE DETAILS (TC-08)
30	TRAFFIC CONTROL AND PROTECTION FOR SIDE ROADS, INTERSECTIONS, AND DRIVEWAYS (TC-10)
31	TYPICAL APPLICATION FOR RAISED REFLECTIVE PAVEMENT MARKERS (TC-11)
32-33	MULTI-LANE FREEWAY PAVEMENT MARKING DETAILS (TC-12)
34	DISTRICT ONE TYPICAL PAVEMENT MARKINGS (TC-13)
35	TRAFFIC CONTROL AND PROTECTION AT TURN BAYS (TC-14)
36	SHORT-TERM PAVEMENT MARKING LETTERS AND SYMBOLS (TC-16)
37	TRAFFIC CONTROL DETAILS FOR FREEWAY SHOULDER AND PARTIAL RAMP CLOSURES (TC-17)
38	DRIVEWAY ENTRANCE SIGNING (TC-26)
39	DISTRICT ONE - DETECTOR LOOP INSTALLATION DETAILS FOR ROADWAY RESURFACING (TS-07)
40	PRUNING FOR SAFETY AND EQUIPMENT CLEARANCE (BM-20)
41-49	DETECTOR LOOP LOCATION DETAILS
50	ARTERIAL ROAD INFORMATION SIGNING (TC-22)

STATE STANDARDS

000001-08	STANDARD SYMBOLS, ABBREVIATIONS AND PATTERNS
424001-11	PERPENDICULAR CURB RAMPS FOR SIDEWALKS
424011-04	CORNER PARALLEL CURB RAMPS FOR SIDEWALKS
424021-06	DEPRESSED CORNER FOR SIDEWALKS
442201-03	CLASS C AND D PATCHES
604001-05	FRAME AND LIDS, TYPE 1
604006-05	FRAME AND GRATE, TYPE 3
606001-07	CONCRETE CURB TYPE B AND COMBINATION CONCRETE CURB AND GUTTER
701101-05	OFF-ROAD OPERATIONS, MULTILANE, 15' (4.5m) TO 24' (600mm) FROM PAVEMENT EDGE
701601-09	URBAN LANE CLOSURE, MULTILANE, 1W OR 2W WITH NONTRAVERSABLE MEDIAN
701606-10	URBAN SINGLE LANE CLOSURE, MULTILANE, 2W WITH MOUNTABLE MEDIAN
701701-10	URBAN LANE CLOSURE, MULTILANE INTERSECTION
701801-06	LANE CLOSURE, MULTILANE, 1W OR 2W CROSSWALK OR SIDEWALK CLOSURE
701901-08	TRAFFIC CONTROL DEVICES
780001-05	TYPICAL PAVEMENT MARKINGS
781001-04	TYPICAL APPLICATIONS FOR RAISED REFLECTIVE PAVEMENT MARKERS
886001-01	DETECTOR LOOP INSTALLATIONS
886006-01	TYPICAL LAYOUTS FOR DETECTION LOOPS

GENERAL NOTES:

- BEFORE STARTING ANY EXCAVATION THE CONTRACTOR SHALL CALL "JULIE" AT 800-892-0123 FOR FIELD LOCATIONS OF BURIED ELECTRIC, TELEPHONE AND GAS FACILITIES, (48 HOURS NOTIFICATION IS REQUIRED).
- 10 FEET (3 METERS) TRANSITION SHALL BE USED TO MATCH PROPOSED CURB AND GUTTER AND MEDIAN ITEMS OF WORK TO EXISTING CURBS AND GUTTERS AND MEDIANS IN THE FIELD, UNLESS OTHERWISE SHOWN. THE TRANSITION SHALL BE PAID FOR AT THE CONTRACT UNIT PRICE FOR THE PROPOSED ITEMS OF WORK SPECIFIED.
- THE CONTRACTOR SHALL COORDINATE CONSTRUCTION ACTIVITIES WITH THE UTILITY COMPANIES AND THE VILLAGE OF BOLINGBROOK.
- THE CONTRACTOR WILL NOT BE ALLOWED TO SET UP A YARD OR FIELD OFFICE ON STATE PROPERTY WITHOUT WRITTEN PERMISSION FROM THE DEPARTMENT.
- ANY PAVEMENT MARKINGS AND RAISED REFLECTIVE PAVEMENT MARKERS OBLITERATED BY MILLING AND RESURFACING OPERATIONS ON SIDE STREETS AND ENTRANCES SHALL BE REPLACED AND PAID FOR IN KIND.
- ALL DAMAGE TO EXISTING PAVEMENT MARKINGS OR RAISED REFLECTIVE PAVEMENT MARKERS OUTSIDE THE REMOVAL LINE SHOWN ON THE PLANS SHALL BE REPLACED AT NO ADDITIONAL COST TO THE DEPARTMENT.
- ALL PAVEMENT PATCHING LOCATIONS WILL BE DETERMINED IN THE FIELD BY THE ENGINEER.
- LOCATION OF COMBINATION CONCRETE CURB AND GUTTER REMOVAL AND REPLACEMENT (OR COMBINATION CURB AND GUTTER (THE TYPE SPECIFIED ON THE PLANS)), WILL BE DETERMINED IN THE FIELD BY THE ENGINEER.
- DRAINAGE ADJUSTMENT OR RECONSTRUCTION LOCATIONS WILL BE DETERMINED IN THE FIELD BY THE ENGINEER.
- IT SHALL BE THE CONTRACTORS RESPONSIBILITY TO VERIFY ALL DIMENSIONS AND EXISTING CONDITIONS IN THE FIELD PRIOR TO CONSTRUCTION AND ORDERING OF MATERIALS.
- FRAMES AND GRATES ADJUSTMENT OF PRIVATE UTILITIES WITHIN THE LIMITS OF THE IMPROVEMENT SHALL BE DONE BY THEIR RESPECTIVE OWNERS AND ARE NOT IN PART OF THIS CONTRACT.
- BEFORE BEGINNING ANY WORK, THE CONTRACTOR SHALL RETAIN AND RECORD FOR FUTURE REFERENCE, ALL EXISTING PAVEMENT MARKING LINES (RAISED REFLECTIVE PAVEMENT MARKERS) IN ORDER THAT THESE LOCATIONS CAN BE RE-ESTABLISHED FOR STRIPING. EXACT LOCATIONS OF ALL PAVEMENT MARKINGS SHALL BE AS DIRECTED BY THE ENGINEER.
- WHEN THE MILLED PAVEMENT IS OPEN TO TRAFFIC THE MAXIMUM GRADE DIFFERENTIAL BETWEEN PASSES OF THE MILLING MACHINE SHALL NOT EXCEED 1 1/2 INCHES (40 mm) WHERE THE SPEED LIMIT IS 40 MPH (80 km/ h) OR LESS AND 1 INCH (25 mm) WHERE THE SPEED LIMIT IS GREATER THAN 40 MPH (80 km/ h). WITH WRITTEN APPROVAL OF THE ENGINEER, A MAXIMUM GRADE DIFFERENTIAL OF 3 INCHES (75 mm) MAY BE ALLOWED IF THE EDGE OF THE MILLING MACHINE IS SLOPED A MINIMUM (1:3).
- THE CONTRACTOR SHALL CONTACT THE DISTRICT ONE TRAFFIC CONTROL CENTER SUPERVISOR FOR ARTERIALS AT KALPANA.KANNAN-HOUSADURGA@ILLINOIS.GOV A MINIMUM OF 72 HOURS IN ADVANCE OF BEGINNING WORK.
- PERMANENT PAVEMENT MARKINGS SHALL BE THERMOPLASTIC (OF THE EXTRUDED TYPE) AND SHOULD BE PLACED IN ACCORDANCE WITH THE "DISTRICT ONE TYPICAL PAVEMENT MARKINGS" DETAIL. (TC-13)
- RAISED REFLECTIVE PAVEMENT MARKERS SHALL BE PLACED IN ACCORDANCE WITH THE "TYPICAL APPLICATIONS FOR RAISED REFLECTIVE PAVEMENT MARKERS (SNOW-PLOW RESISTANT)" DETAIL. (TC-11)
- THE RESIDENT ENGINEER SHALL CONTACT MR. ERIC CAMPOS, AREA TRAFFIC FIELD ENGINEER, AT ERIC.CAMPOS@ILLINOIS.GOV, A MINIMUM OF TWO (2) WEEKS PRIOR TO THE PLACEMENT OF PERMANENT PAVEMENT MARKINGS.
- THE CONTRACTOR SHALL MAINTAIN PEDESTRIAN ACCESS AT ALL TIMES DURING CONSTRUCTION.
- THE CONTRACTOR SHALL CONTACT THE ROADSIDE DEVELOPMENT UNIT AT (847) 705-4171 AT LEAST TWO WEEKS PRIOR TO BEGINNING LANDSCAPE AND FORESTRY WORK FOR LAYOUT.
- PAVEMENT MARKING TAPE, TYPE III SHALL BE USED FOR SHORT-TERM PAVEMENT MARKINGS ON ALL FINAL SURFACES.



LEGEND:

- ① EXISTING P.C.C. PAVEMENT ±9"
- ② EXISTING HOT-MIX ASPHALT SURFACE ±4" (AFTER MILLING)
- ③ EXISTING COMBINATION CONCRETE CURB AND GUTTER, TYPE B-6.12
- ④ EXISTING CONCRETE BARRIER MEDIAN
- ⑤ EXISTING LANDSCAPE MEDIAN
- ⑥ EXISTING ASPHALT MEDIAN
- ⑦ EXISTING STABILIZED SUB-BASE
- ⑧ PROPOSED HOT-MIX ASPHALT SURFACE REMOVAL, 1 3/4"
- ⑨ PROPOSED P.C.C. SURFACE REMOVAL (VARIABLE DEPTH)
- ⑩ PROPOSED MEDIAN SURFACE REMOVAL, 2" (PAID AS MEDIAN REMOVAL PARTIAL DEPTH)
- ⑪ PROPOSED POLYMERIZED HOT-MIX ASPHALT BINDER COURSE, IL-4.75, N50, 1"
- ⑫ PROPOSED HOT-MIX ASPHALT SURFACE COURSE, MIX "D", N50, 2"
- ⑬ PROPOSED POLYMERIZED HOT-MIX ASPHALT SURFACE COURSE, MIX "E", IL-9.5, N70, 1 3/4"
- ⑭ PROPOSED POLYMERIZED HOT-MIX ASPHALT SURFACE COURSE, STONE MATRIX ASPHALT, 9.5, MIX "F", N80, 1 3/4"
- R CURB AND GUTTER REMOVAL AND REPLACEMENT (AS DIRECTED BY THE ENGINEER)

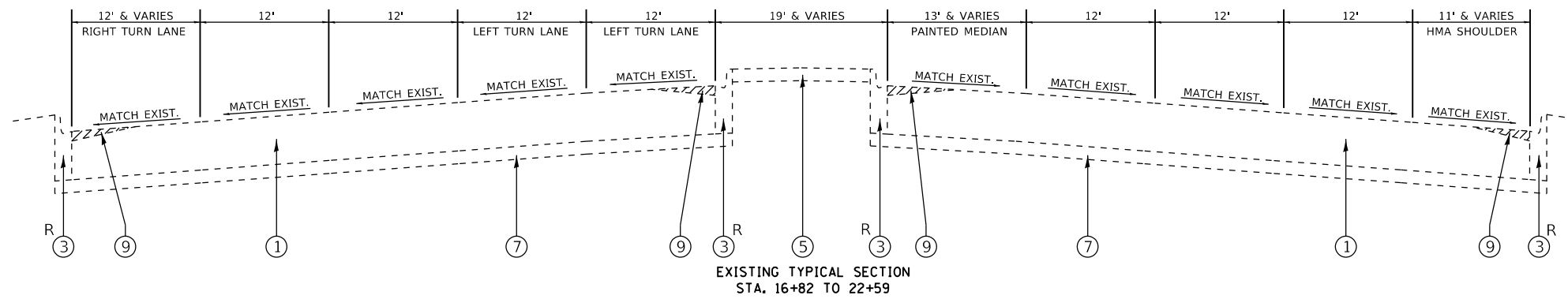
MIXTURE REQUIREMENTS

MIXTURE TYPE	AIR VOIDS @ Ndes	QMP
PATCHING		
CLASS "D" PATCHES (HMA BINDER, IL-19MM)	4% @ 70 GYR.	QC / QA
PAVEMENT RESURFACING		
POLYMERIZED HOT-MIX ASPHALT SURFACE COURSE, MIX "E", IL-9.5, N70, 1 3/4"	4% @ 70 GYR.	PPF
P.C.C. OVERLAY		
POLYMERIZED HOT-MIX ASPHALT SURFACE COURSE, STONE MATRIX ASPHALT, 9.5, MIX "F", N80, 1 3/4"	3.5% @ 80 GYR.	QC / QA
POLYMERIZED HOT-MIX ASPHALT BINDER COURSE, IL-4.75, N50, 1"	3.5% @ 50 GYR.	QC / QA
HMA MEDIAN REPAIR		
HOT-MIX ASPHALT SURFACE COURSE, MIX "D", N50, 2"	4% @ 50 GYR.	QC / QA
QMP DESIGNATION: QUALITY CONTROL FOR PERFORMANCE (QCP); QUALITY CONTROL/ QUALITY ASSURANCE (QC/ QA); PAY FOR PERFORMANCE (PPF)		

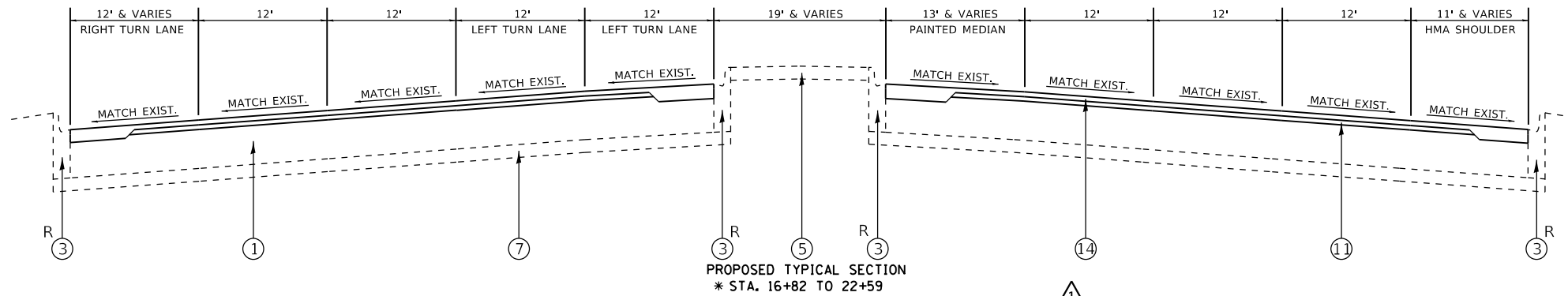
NOTES:

- THE UNIT WEIGHT USED TO CALCULATE ALL HOT-MIX ASPHALT SURFACE QUANTITIES IS 112 LBS./SQ. YD./ IN.
- THE "AC TYPE" FOR POLYMERIZED HMA MIXES SHALL BE "SBS/SBR PG 76 -22" AND FOR NON-POLYMERIZED HMA THE "AC TYPE" SHALL BE "PG 64 -22" UNLESS MODIFIED BY SPECIAL PROVISIONS.
- THE MILLING SHALL BE DONE PRIOR TO PATCHING
- QUALITY MANAGEMENT PROGRAM (QMP) IDENTIFIES THE PARTICULAR QUALITY CONTROL SPECIFICATION THAT APPLIES TO THE HMA MIXTURE
- THE LONGITUDINAL JOINT SEALANT SHALL BE PLACED OVER THE MILLED SURFACE
- FOR USE OF RECYCLED MATERIALS SEE SPECIAL PROVISIONS

① REVISED SHEET 5/24/2021

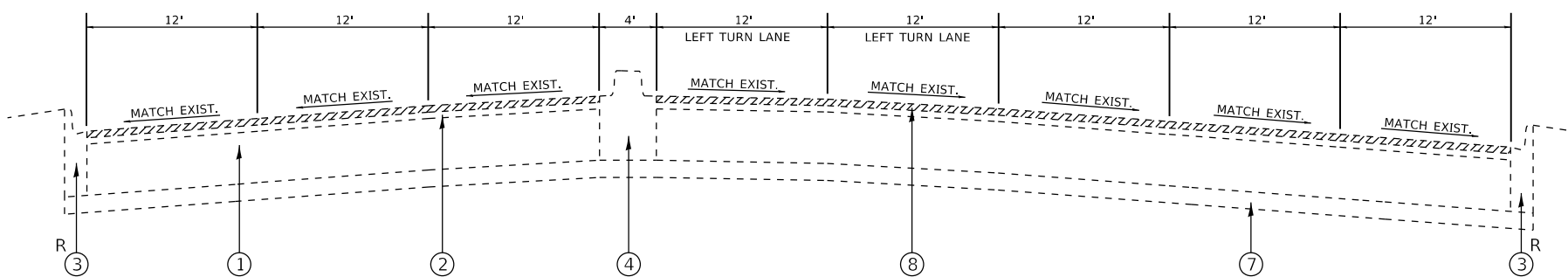


EXISTING TYPICAL SECTION
STA. 16+82 TO 22+59

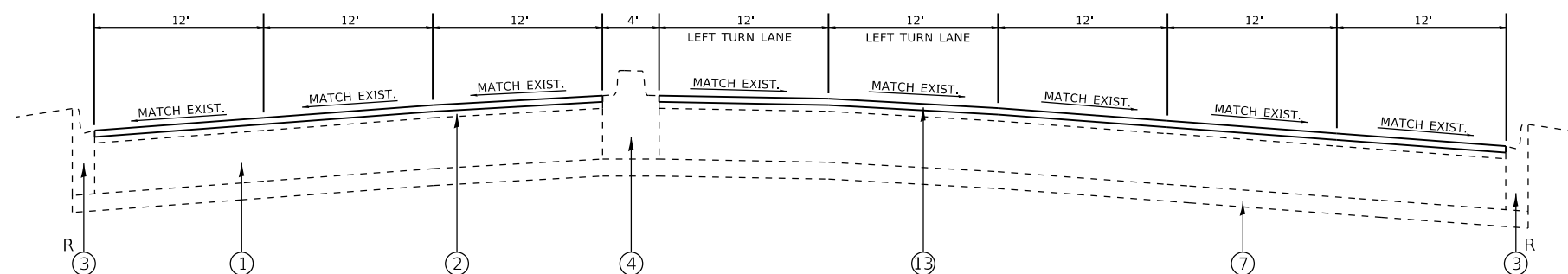


PROPOSED TYPICAL SECTION
* STA. 16+82 TO 22+59

*NOTE:
THE LONGITUDINAL JOINT SEALANT SHALL ONLY BE PLACED OVER THE POLYMERIZED HOT-MIX ASPHALT BINDER COURSE, IL-4.75, N50 FOR THIS SEGMENT.



EXISTING TYPICAL SECTION
STA. 22+59 TO 26+31
STA. 36+08 TO 38+33



PROPOSED TYPICAL SECTION
STA. 22+59 TO 26+31
STA. 36+08 TO 38+33

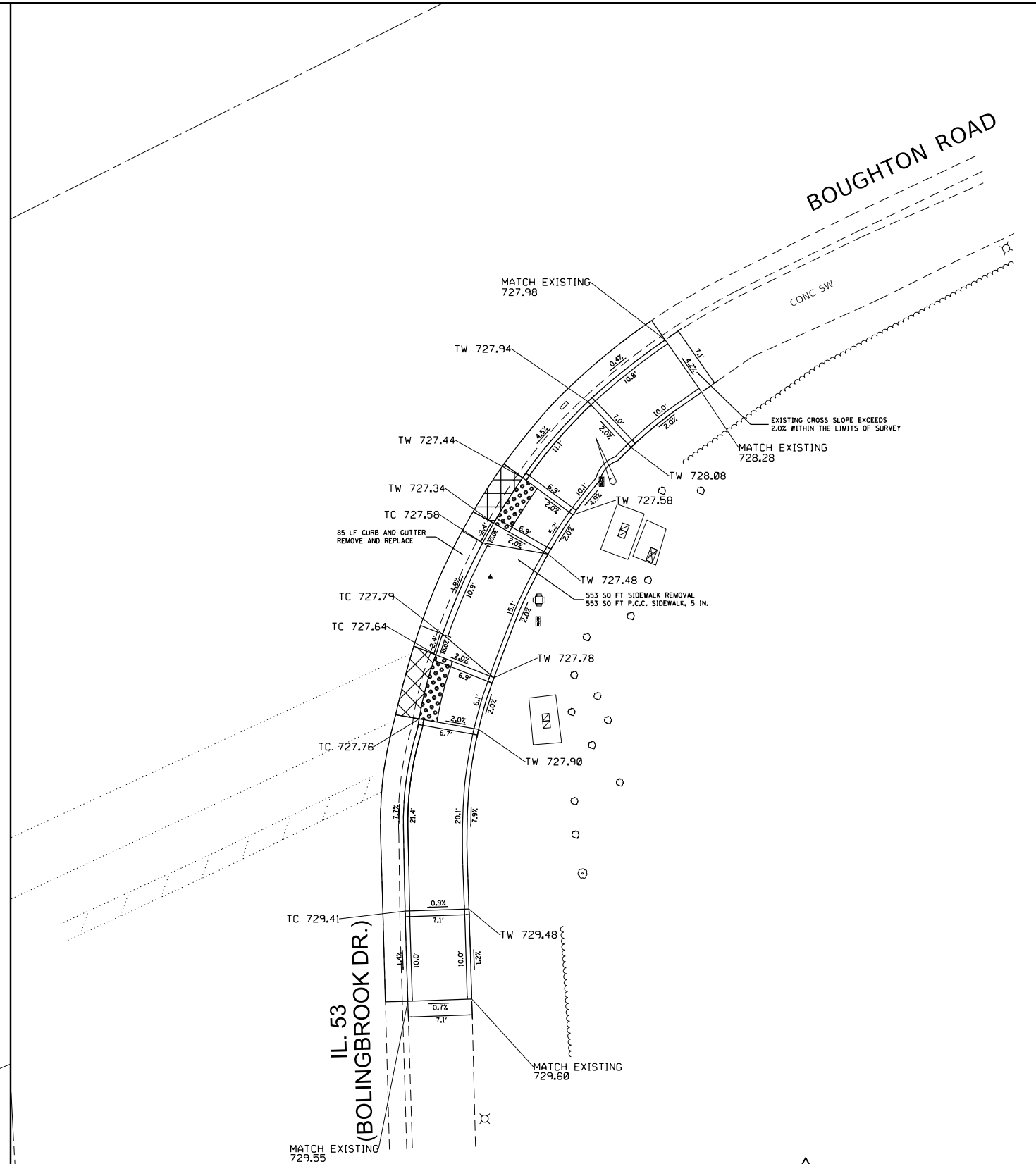
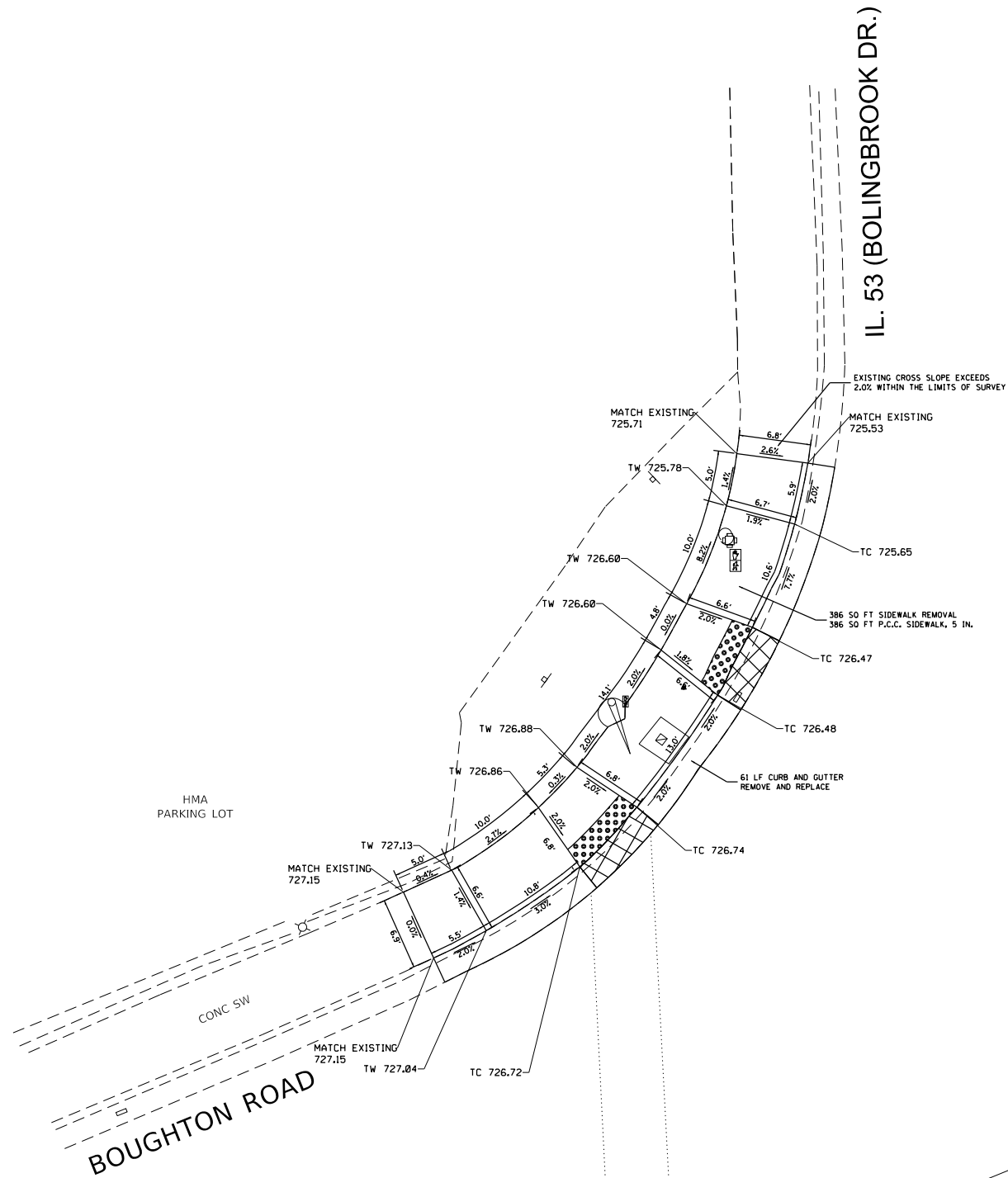
FILE NAME =	USER NAME = steedpo	DESIGNED -	REVISED - ① 5/21/2021
pw:\planroom\dot.illinois.gov\PIDOT\Documents\IDOT Offices\District 1\Projects\0148720\DRW\Design\0148720-sht-plan.dgn		CHECKED -	REVISED -
		DATE -	REVISED -

**STATE OF ILLINOIS
DEPARTMENT OF TRANSPORTATION**

**EXISTING AND PROPOSED TYPICAL SECTIONS
FAP 870 / IL 53 (BOLINGBROOK DR.)—DuPAGE COUNTY LINE TO I-55**

SCALE: NONE SHEET NO. 1 OF 1 SHEETS STA. TO STA.

F.A.P. RTE.	SECTION	COUNTY	TOTAL SHEETS	SHEET NO.
870	2020-088-RS	WILL	50	6
CONTRACT NO. 62L66				
ILLINOIS FED. AID PROJECT				



▲ ADDED ENTIRE SHEET 5/24/2021

REFERENCE BENCH MARK ELEV 730.19
 BENCHMARK : SET X ON SE CORNER OF TRAFFIC CONTROL BOX
 LOCATION : BASE AT SE CORNER OF IL 53 (BOLINGBROOK DR.) AND BOUGHTON RD.

LEGEND

xx.xx'

EXISTING LENGTH

====

PROPOSED SIDE CURB

()

EXISTING ELEVATION/SLOPE



PROPOSED SIDEWALK



DETECTABLE WARNINGS



DEPRESSED CURB

REFERENCE BENCH MARK ELEV 730.19
 BENCHMARK : SET X ON SE CORNER OF TRAFFIC CONTROL BOX
 LOCATION : BASE AT SE CORNER OF IL 53 (BOLINGBROOK DR.) AND BOUGHTON RD.

FILE NAME =	USER NAME = steedp	DESIGNED -	REVISED -
p:\planroom.dot\illinois.gov\PIDOT\Documents\IDOT Offices\District 1\Projects\0148720\DRAWING\Design\0148720-ADA.dgn		CHECKED -	REVISED -
Default	PLOT DATE = 5/21/2021	DATE -	REVISED -

**STATE OF ILLINOIS
 DEPARTMENT OF TRANSPORTATION**

**ADA DETAILS (IL 53 AT BOUGHTON RD.—NW CORNER)
 FAP 870 /IL 53 (BOLINGBROOK DR.)—DuPAGE COUNTY LINE TO I-55**

SCALE: SHEET OF SHEETS STA. TO STA.

F.A.P. RTE.	SECTION	COUNTY	TOTAL SHEETS	SHEET NO.
870	2020-088-R5	WILL	50	17A
				CONTRACT NO. 62L66
ILLINOIS FED. AID PROJECT				