

INDEX OF SHEETS

06-11-2021 LETTING ITEM 023

- 1 COVER SHEET
- 2 GENERAL NOTES
- 3-7 SUMMARY OF QUANTITIES
- 8-9 TYPICAL SECTIONS
- 10 PERMANENT SURVEY MARKERS TABLE
- 11 LINE DIAGRAM
- 12-15 SCHEDULE OF QUANTITIES
- 16-24 PLAN VIEW
- 25-28 DETAILS

LIST OF ILLINOIS DOT HIGHWAY STANDARDS

000001-08	STANDARD SYMBOLS, ABBREVIATIONS AND PATTERNS
001006	DECIMAL OF AN INCH AND OF A FOOT
406201-01	MAILBOX TURNOUT
442201-03	CLASS C AND D PATCHES
542401-04	METAL FLARED END SECTION FOR PIPE CULVERTS
630001-12	STEEL PLATE BEAM GUARDRAIL
630106-02	LONG-SPAN GUARDRAIL OVER CULVERT
630201-07	PCC/HMA STABILIZATION AT STEEL PLATE BEAM GUARDRAIL
631006-08	TRAFFIC BARRIER TERMINAL, TYPE 1B
635001-02	DELINEATORS
642006-01	SHOULDER RUMBLE STRIPS, 8 INCH
667101-02	PERMANENT SURVEY MARKERS
701001-02	OFF-ROAD OPERATIONS 2L, 2W, MORE THAN 15' (4.5 m) AWAY
701006-05	OFF-ROAD OPERATIONS 2L, 2W, 15' (4.5 m) TO 24" (600 mm) FROM PAVEMENT EDGE
701011-04	OFF-ROAD MOVING OPERATIONS 2L, 2W, DAY ONLY
701301-04	LANE CLOSURE, 2L, 2W, SHORT TIME OPERATIONS
701306-04	LANE CLOSURE, 2L, 2W, SLOW MOVING OPERATIONS DAY ONLY, FOR SPEEDS ≥ 45 MPH
701311-03	LANE CLOSURE, 2L, 2W, MOVING OPERATIONS - DAY ONLY
701901-08	TRAFFIC CONTROL DEVICES
725001-01	OBJECT AND TERMINAL MARKERS
780001-05	TYPICAL PAVEMENT MARKINGS
781001-04	TYPICAL APPLICATIONS RAISED REFLECTIVE PAVEMENT MARKERS
782001-01	PRISMATIC CURB REFLECTORS

STATE OF ILLINOIS
DEPARTMENT OF TRANSPORTATION

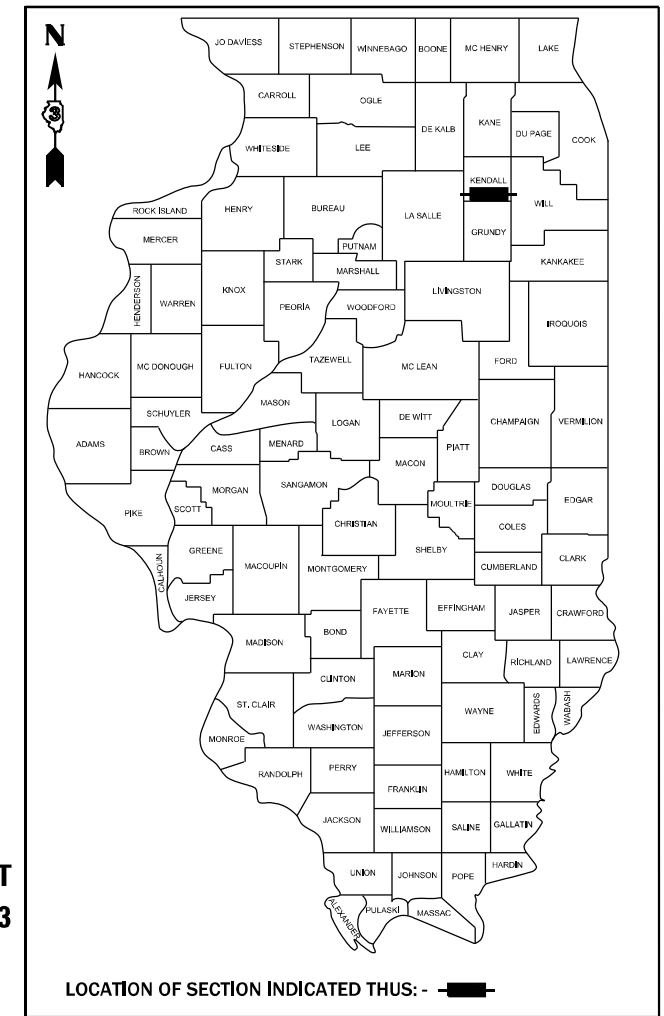
**PROPOSED
HIGHWAY PLANS**

**FAP ROUTE 607 (US 52)
SECTION (126,127)RS-5
PROJECT STP-ONEW(814)
3P MILLING & RS (DESIGN OVERLAY)
KENDALL COUNTY**

C-93-058-14

F.A.P. RTE.	SECTION	COUNTY	TOTAL SHEETS	SHEET NO.
607	(126,127)RS-5	KENDALL	28	1
		ILLINOIS	CONTRACT NO. 66D51	

D-93-036-14



FUNCTIONAL CLASSIFICATION
RURAL MINOR ARTERIAL
2019 ADT=1500
P.V. = 89% S.U. = 5% M.U. = 6%

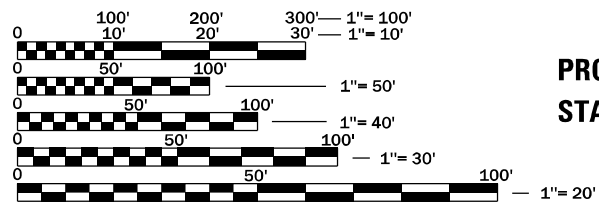
STATE OF ILLINOIS
DEPARTMENT OF TRANSPORTATION

SUBMITTED March 18, 2021

[Signature]
REGIONAL ENGINEER

May 7, 2021
[Signature]
ENGINEER OF DESIGN AND ENVIRONMENT

May 7, 2021
[Signature]
DIRECTOR OF HIGHWAYS PROJECT IMPLEMENTATION

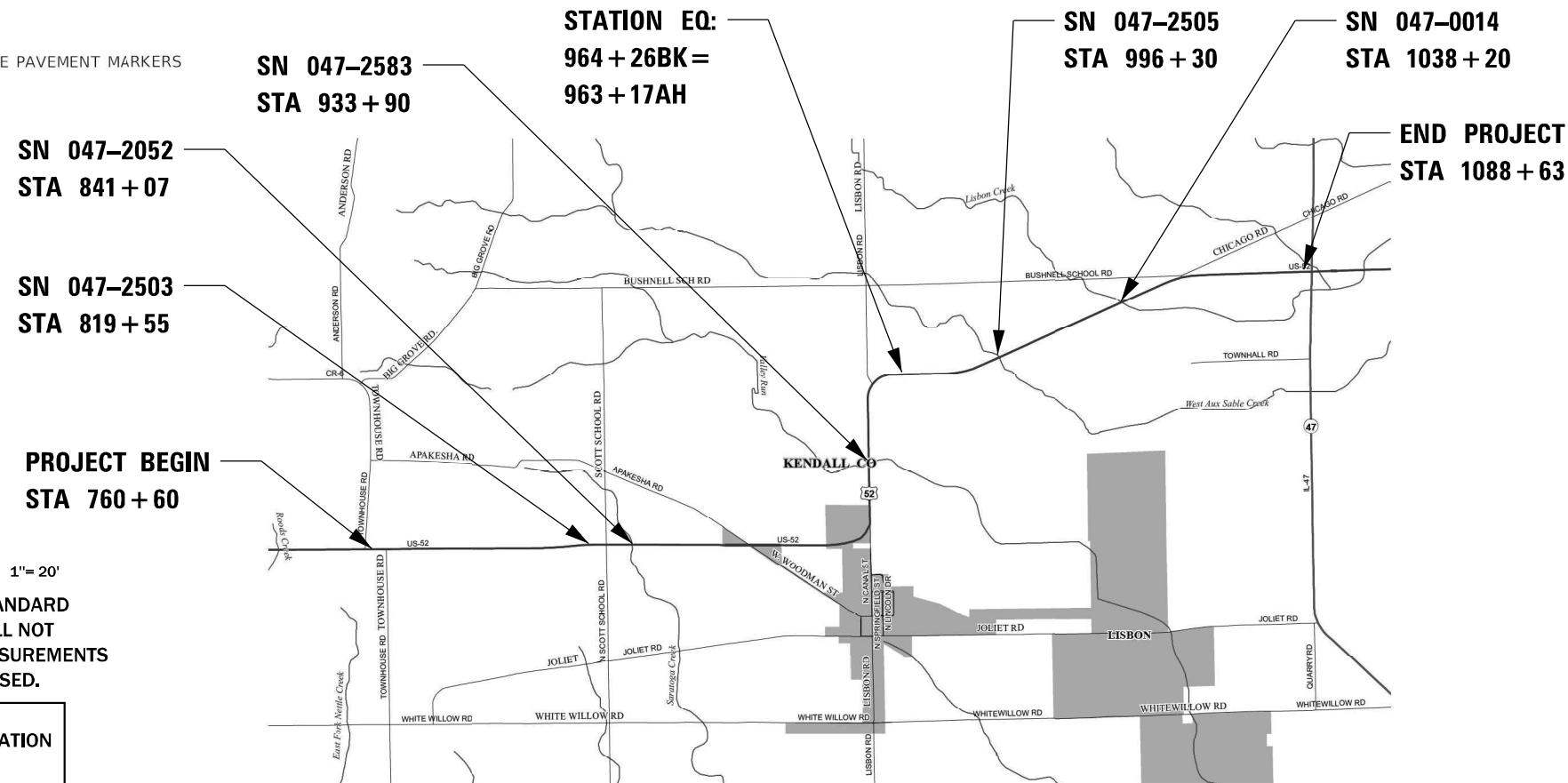


FULL SIZE PLANS HAVE BEEN PREPARED USING STANDARD ENGINEERING SCALES. REDUCED SIZED PLANS WILL NOT CONFORM TO STANDARD SCALES. IN MAKING MEASUREMENTS ON REDUCED PLANS, THE ABOVE SCALES MAY BE USED.

J.U.L.I.E.
JOINT UTILITY LOCATION INFORMATION FOR EXCAVATION
1-800-892-0123
OR 811

PROJECT ENGINEER: JACOB OYIER, P.E.
UNIT CHIEF: STEPHENIE CARMIN
DISTRICT 3 NO. (815) 434-6131
CONTRACT NO. 66D51

GROSS LENGTH = 32,912 FT. = 6.23 MILE
NET LENGTH = 32,806 FT. = 6.21 MILE



**PRINTED BY THE AUTHORITY
OF THE STATE OF ILLINOIS**

GENERAL NOTES

THE THICKNESS OF HMA SHOWN ON THE PLANS IS THE NOMINAL THICKNESS. DEVIATIONS FROM THE NOMINAL THICKNESS WILL BE PERMITTED WHEN SUCH DEVIATIONS OCCUR DUE TO IRREGULARITIES IN THE EXISTING SURFACE OR BASE ON WHICH THE HMA IS PLACED.

THE ENGINEER WILL BE THE SOLE JUDGE CONCERNING CURING TIME FOR THE VARIOUS HMA LIFTS.

ON EXISTING PAVEMENT WHICH MAY BE SUPERELEVATED, THE NEW HMA PAVEMENT SHALL BE BUILT WITH THE SAME SUPERELEVATION UNLESS NEW SUPERELEVATION RATES ARE GIVEN ON THE PLANS.

ANY REFERENCE TO A STANDARD IN THESE PLANS SHALL BE INTERPRETED TO MEAN THE EDITION AS INDICATED BY THE SUBNUMBER SHOWN IN THE LIST OF STANDARDS OR THE COPY INCLUDED IN THESE PLANS.

THE FOLLOWING RATES OF APPLICATION HAVE BEEN USED IN CALCULATING PLAN QUANTITIES:

GRANULAR MATERIALS	2.05	TONS / CU YD
HMA RESURFACING	112	LBS / SQ YD / IN
SHORT TERM PAVEMENT MARKING	10	FT /100 FT OF APPLICATION
MIX FOR CRACKS, ITS & FLGWYS	0.0003	TONS / SQ YD
BINDER (HAND METHOD)	0.0005	M TONS / SQ M

ALL DAMAGE TO DEPARTMENT OWNED UNDERGROUND FACILITIES, CAUSED BY THE CONTRACTOR SHALL BE REPAIRED TO THE SATISFACTION OF THE DEPARTMENT AT THE CONTRACTOR'S EXPENSE. THIS SHALL INCLUDE ALL TEMPORARY REPAIRS REQUIRED TO KEEP THE FACILITY OPERATIONAL WHILE MATERIAL IS BEING OBTAINED TO MAKE PERMANENT REPAIRS. SPLICING OF ELECTRIC CABLE WILL NOT BE ALLOWED. ELECTRIC CABLE SHALL BE REPLACED FROM POLE TO POLE OR CONTROLLER.

MEMBERS OF JULIE KNOWN TO BE WITHIN THE LIMITS OF THE IMPROVEMENT ARE: AT&T, COMED & NICOR

COMMITMENTS

HMA MIXTURE REQUIREMENT TABLE			
LOCATION(S):	ENTIRE PROJECT	ENTIRE PROJECT	ENTIRE PROJECT
MIXTURE USE(S):	HMA SURFACE	HMA BINDER	INCIDENTAL HMA
BINDER GRADE (PG):	PG 64-22	PG 64-22	PG 64-22
DESIGN AIR VOIDS:	4.0% @ N50	4.0% @ N50	4.0% @ N50
MIXTURE COMPOSITION: (MIXTURE GRADATION)	IL 9.5	IL 9.5	IL 9.5
FRICTION AGGREGATE:	MIXTURE C		MIXTURE C
MIXTURE WEIGHT:	112.0 LB/SY/IN	112.0 LB/SY/IN	112.0 LB/SY/IN
QUALITY MANAGEMENT PROGRAM:	QCP	QCP	QC/QA
SUBLOT SIZE:	1000 TONS	1000 TONS	N/A
DENSITY TEST METHOD:	CORES	CORES	SATISFACTION OF THE ENGINEER

STATE OF ILLINOIS
DEPARTMENT OF TRANSPORTATION
DISTRICT THREE
AS BUILT INFORMATION

STATE OF ILLINOIS
DEPARTMENT OF TRANSPORTATION
DISTRICT THREE

SUPERVISING CONSTRUCTION FIELD ENGINEER

PREPARED BY: _____
DISTRICT STUDIES & PLANS ENGINEER

RESIDENT ENGINEER / TECHNICIAN

DATE: _____

START & END DATES
OF CONSTRUCTION: _____

EXAMINED BY: _____
DISTRICT CONSTRUCTION ENGINEER

INSPECTORS: _____

DISTRICT MATERIALS ENGINEER

DISTRICT OPERATIONS ENGINEER

FILE NAME =	USER NAME = NOLASCOCJ	DESIGNED -	REVISED -	STATE OF ILLINOIS DEPARTMENT OF TRANSPORTATION	GENERAL NOTES			F.A.P. RTE.	SECTION	COUNTY	TOTAL SHEETS	SHEET NO.
pw:\planroom\dot\illinois.gov\PWIDOT\Documents\DOT\offices\District 3\Projects\I366D51\CADData\I366D51-ehbover.dwg	DRAWN -	REVISED -	REVISED -					607	(126,127)RS-5	KENDALL	28	2
Default	PLOT SCALE = 100,0000' / in.	CHECKED -	REVISED -		SCALE: SHEET OF SHEETS STA. TO STA.			CONTRACT NO. 66D51				
	PLOT DATE = 3/18/2021	DATE -	REVISED -					ILLINOIS FED. AID PROJECT				

MODEL: Default
 FILE NAME: p:\u0000\m0000\dot\illinois\pwr\PROJECTS\DOT\Office\District 3\Projects\0366051\CADD\0366051-INT-SOQ.dwg

CODE NO.	ITEM	UNIT	TOTAL QUANTITY	CONSTR. CODE
				FUND CODE
				STP -RUR
				ROADWAY
				0005
				RURAL
20300100	CHANNEL EXCAVATION	CU YD	50	50
20400800	FURNISHED EXCAVATION	CU YD	17.9	17.9
21400100	GRADING AND SHAPING DITCHES	FOOT	1980	1980
28100107	STONE RIPRAP, CLASS A4	SQ YD	43	43
28200200	FILTER FABRIC	SQ YD	43	43
31101200	SUBBASE GRANULAR MATERIAL, TYPE B 4"	SQ YD	23	23
40600290	BITUMINOUS MATERIALS (TACK COAT)	POUND	81414	81414
40600400	MIXTURE FOR CRACKS, JOINTS, AND FLANGEWAYS	TON	35.2	35.2
40600900	HOT-MIX ASPHALT BINDER COURSE (HAND METHOD), N50	TON	58.8	58.8
40600990	TEMPORARY RAMP	SQ YD	549	549
40602978	HOT-MIX ASPHALT BINDER COURSE, 1L- 9.5, N50	TON	13148	13148
40604050	HOT-MIX ASPHALT SURFACE COURSE, 1L-9.5, MIX "C", N50	TON	11504	11504
40800050	INCIDENTAL HOT-MIX ASPHALT SURFACING	TON	604	604
44000164	HOT-MIX ASPHALT SURFACE REMOVAL, 3 3/4"	SQ YD	117387	117387

USER NAME = NOLASCOCJ	DESIGNED -	REVISED -
	DRAWN -	REVISED -
PLOT SCALE = 100,0000' / in.	CHECKED -	REVISED -
PLOT DATE = 3/18/2021	DATE -	REVISED -

**STATE OF ILLINOIS
DEPARTMENT OF TRANSPORTATION**

SUMMARY OF QUANTITIES

SCALE: SHEET OF SHEETS STA. TO STA.

F.A.P. RTE.	SECTION	COUNTY	TOTAL SHEETS	SHEET NO.
607	(126,127)RS-5	KENDALL	28	3
CONTRACT NO. 66D51			ILLINOIS FED. AID PROJECT	

MODEL: Default
 FILE NAME: p:\u0000\rooms\dot\illinois\gov\PIWDOT\Documents\DOT_Offices\District_3\Projects\0366D51\CADD\0366D51-INT-SOQ.dwg

CODE NO.	ITEM	UNIT	TOTAL QUANTITY	CONSTR. CODE	
				80% FED 20% STATE	
				FUND CODE	
				STP-RUR	
		ROADWAY		0005	
				RURAL	
44201745	CLASS D PATCHES, TYPE III, 8 INCH	SQ YD	40	40	
48102100	AGGREGATE WEDGE SHOULDER, TYPE B	TON	1256	1256	
48203029	HOT-MIX ASPHALT SHOULDERS, 8"	SQ YD	607	607	
50105220	PIPE CULVERT REMOVAL	FOOT	128	128	
542A0220	PIPE CULVERTS, CLASS A, TYPE 1 15"	FOOT	32	32	
542A5485	PIPE CULVERTS, CLASS A, TYPE 1 EQUIVALENT ROUND-SIZE 30"	FOOT	96	96	
54244805	INLET BOX, STANDARD 542501	EACH	2	2	
54262715	METAL FLARED END SECTIONS 15"	EACH	2	2	
54262718	METAL FLARED END SECTIONS 18"	EACH	2	2	
54262736	METAL FLARED END SECTIONS 36"	EACH	1	1	
54263330	CONCRETE END SECTION, STANDARD 542011, 30", 1:3	EACH	2	2	
54390120	INSERTION CULVERT LINER 15"	FOOT	48	48	
* 63000001	STEEL PLATE BEAM GUARDRAIL, TYPE A, 6 FOOT POSTS	FOOT	450	450	
* 63000350	LONG-SPAN GUARDRAIL OVER CULVERT, 12 FT 6 IN SPAN	FOOT	75	75	

*= SPECIALTY ITEM

USER NAME = NOLASCOCJ	DESIGNED -	REVISED -	STATE OF ILLINOIS DEPARTMENT OF TRANSPORTATION	SUMMARY OF QUANTITIES				F.A.P. RTE.	SECTION	COUNTY	TOTAL SHEETS	SHEET NO.
PLOT SCALE = 100,0000 ' / in.	DRAWN -	REVISED -						607	(126,127)RS-5	KENDALL	28	4
PLOT DATE = 3/18/2021	CHECKED -	REVISED -						CONTRACT NO. 66D51				
	DATE -	REVISED -		SCALE:	SHEET	OF	SHEETS	STA.	TO	STA.	ILLINOIS FED. AID PROJECT	

MODEL: Default
 FILE NAME: p:\pub\mroom.dwt\illinois.gov\PWIDOT\Documents\DOT_Offices\District_3\Projects\0366051\CADD\0366051-INT-S00.dgn

CODE NO.	ITEM	UNIT	TOTAL QUANTITY	CONSTR. CODE	
				80% FED 20% STATE	
				FUND CODE	STP - RUR
				ROADWAY	0005
	RURAL				
* 63000370	LONG-SPAN GUARDRAIL OVER CULVERT, 25 FT SPAN	FOOT	50		50
* 63100167	TRAFFIC BARRIER TERMINAL, TYPE 1 (SPECIAL) TANGENT	EACH	8		8
63200310	GUARDRAIL REMOVAL	FOOT	925		925
63500105	DELINEATORS	EACH	18		18
64200108	SHOULDER RUMBLE STRIPS, 8 INCH	FOOT	65656		65656
* 66700205	PERMANENT SURVEY MARKERS, TYPE 1	EACH	4		4
* 66900200	NON-SPECIAL WASTE DISPOSAL	CU YD	40		40
* 66900530	SOIL DISPOSAL ANALYSIS	EACH	1		1
* 66901001	REGULATED SUBSTANCES PRE-CONSTRUCTION PLAN	LSUM	1		1
* 66901003	REGULATED SUBSTANCES FINAL CONSTRUCTION REPORT	LSUM	1		1
* 66901006	REGULATED SUBSTANCES MONITORING	CAL DA	2		2
67000400	ENGINEER'S FIELD OFFICE, TYPE A	CAL MO	3		3
67100100	MOBILIZATION	L SUM	1		1
70100460	TRAFFIC CONTROL AND PROTECTION, STANDARD 701306	L SUM	1		1

*= SPECIALTY ITEM

USER NAME = NOLASCOCJ	DESIGNED -	REVISED -
	DRAWN -	REVISED -
PLOT SCALE = 100,0000' / in.	CHECKED -	REVISED -
PLOT DATE = 3/18/2021	DATE -	REVISED -

**STATE OF ILLINOIS
DEPARTMENT OF TRANSPORTATION**

SUMMARY OF QUANTITIES

SCALE: SHEET OF SHEETS STA. TO STA.

F.A.P. RTE.	SECTION	COUNTY	TOTAL SHEETS	SHEET NO.
607	(126,127)RS-5	KENDALL	28	5
CONTRACT NO. 66D51				
ILLINOIS FED. AID PROJECT				

MODEL: Default
 FILE NAME: p:\mhammon.dwt\illinois.gov\PIWDOT\Documents\DOT_Office\District_3\Projects\0366051\CADD\0366051-INT-SQ.dwg

CODE NO.	ITEM	UNIT	TOTAL QUANTITY	CONSTR. CODE	
				80% FED 20% STATE	
				FUND CODE	STP -RUR
				ROADWAY	0005
				RURAL	
70300100	SHORT TERM PAVEMENT MARKING	FOOT	3294		3294
70300150	SHORT TERM PAVEMENT MARKING REMOVAL	SQ FT	1098		1098
* 72501000	TERMINAL MARKER - DIRECT APPLIED	EACH	8		8
* 78001110	PAINT PAVEMENT MARKING - LINE 4"	FOOT	167616		167616
* 78001130	PAINT PAVEMENT MARKING - LINE 6"	FOOT	13836		13836
* 78100100	RAISED REFLECTIVE PAVEMENT MARKER	EACH	481		481
* 78200005	GUARDRAIL REFLECTORS, TYPE A	EACH	14		14
78300200	RAISED REFLECTIVE PAVEMENT MARKER REMOVAL	EACH	481		481
X0322936	REMOVE EXISTING FLARED END SECTION	EACH	8		8
X0327809	LINEAR DELINEATOR PANELS, 4 INCH	EACH	14		14
X0800001	SHOULDER REMOVAL (SPECIAL)	SQ YD	76		76
X4401198	HOT-MIX ASPHALT SURFACE REMOVAL, VARIABLE DEPTH	SQ YD	3918		3918
Z0005216	HOT-MIX ASPHALT STABILIZATION 6" AT STEEL PLATE BEAM GUARD RAIL	SQ YD	200		200
Z0005300	BOX CULVERTS TO BE CLEANED	EACH	2		2

*= SPECIALTY ITEM

USER NAME = NOLASCOCJ	DESIGNED -	REVISED -	STATE OF ILLINOIS DEPARTMENT OF TRANSPORTATION	SUMMARY OF QUANTITIES				F.A.P. RTE.	SECTION	COUNTY	TOTAL SHEETS	SHEET NO.
PLOT SCALE = 100,0000 ' / in.	DRAWN -	REVISED -						607	(126,127)RS-5	KENDALL	28	6
PLOT DATE = 3/18/2021	CHECKED -	REVISED -		SCALE: SHEET OF SHEETS STA. TO STA.				CONTRACT NO. 66D51				
	DATE -	REVISED -		ILLINOIS FED. AID PROJECT								

MODEL Path: \\p11n001\pub\lhamon.dwt\Illinois\dot\Documents\DOT_Offices\District 3\Projects\0366D51\CADD\0366D51-INT-S00.dgn
 FILE NAME: \\p11n001\pub\lhamon.dwt\Illinois\dot\Documents\DOT_Offices\District 3\Projects\0366D51\CADD\0366D51-INT-S00.dgn

CODE NO.	ITEM	UNIT	TOTAL QUANTITY	CONSTR. CODE	
				80% FED 20% STATE	
				FUND CODE STP -RUR	
				ROADWAY	
				0005	
				RURAI	
Z0030850	TEMPORARY INFORMATION SIGNING	SQ FT	42		42
Z0033700	LONGITUDINAL JOINT SEALANT	FOOT	32828		32828
Z0034105	MATERIAL TRANSFER DEVICE	TON	24652		24652

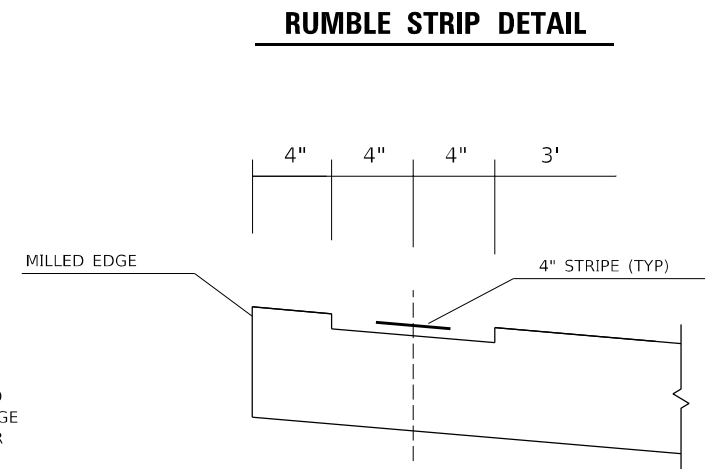
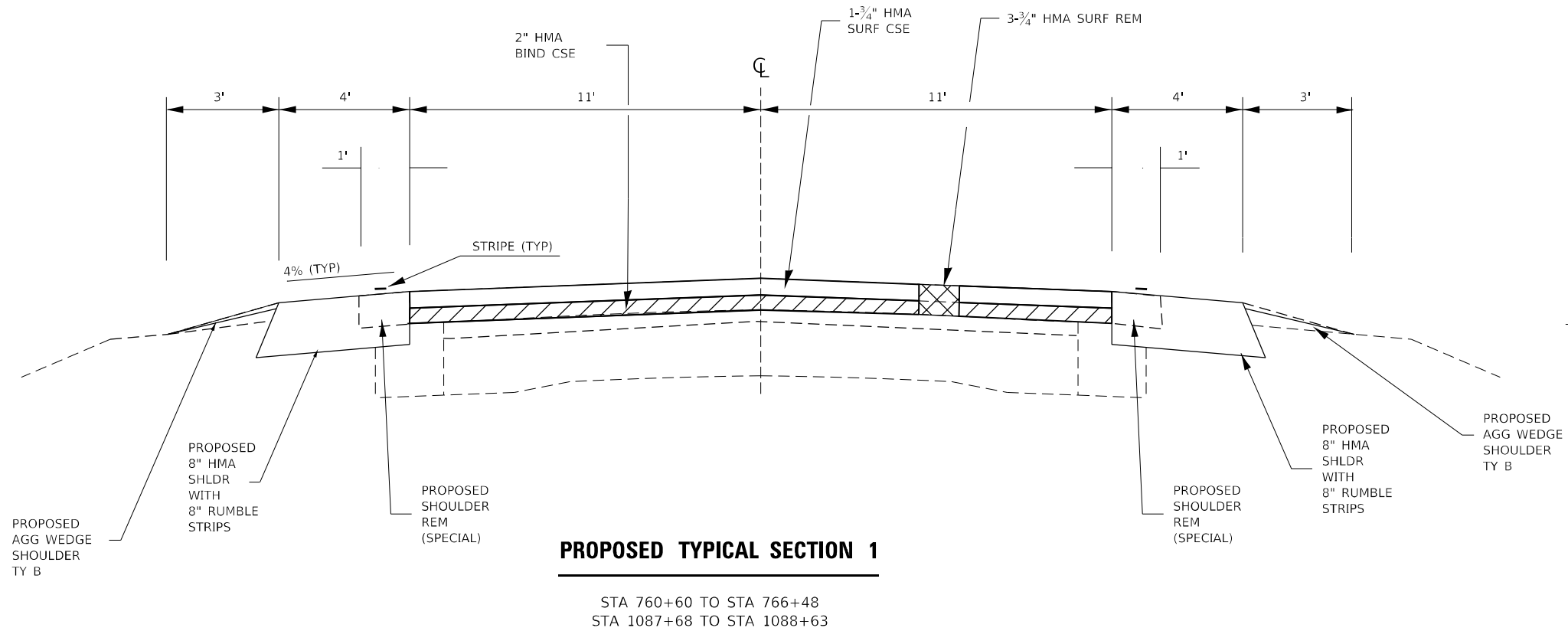
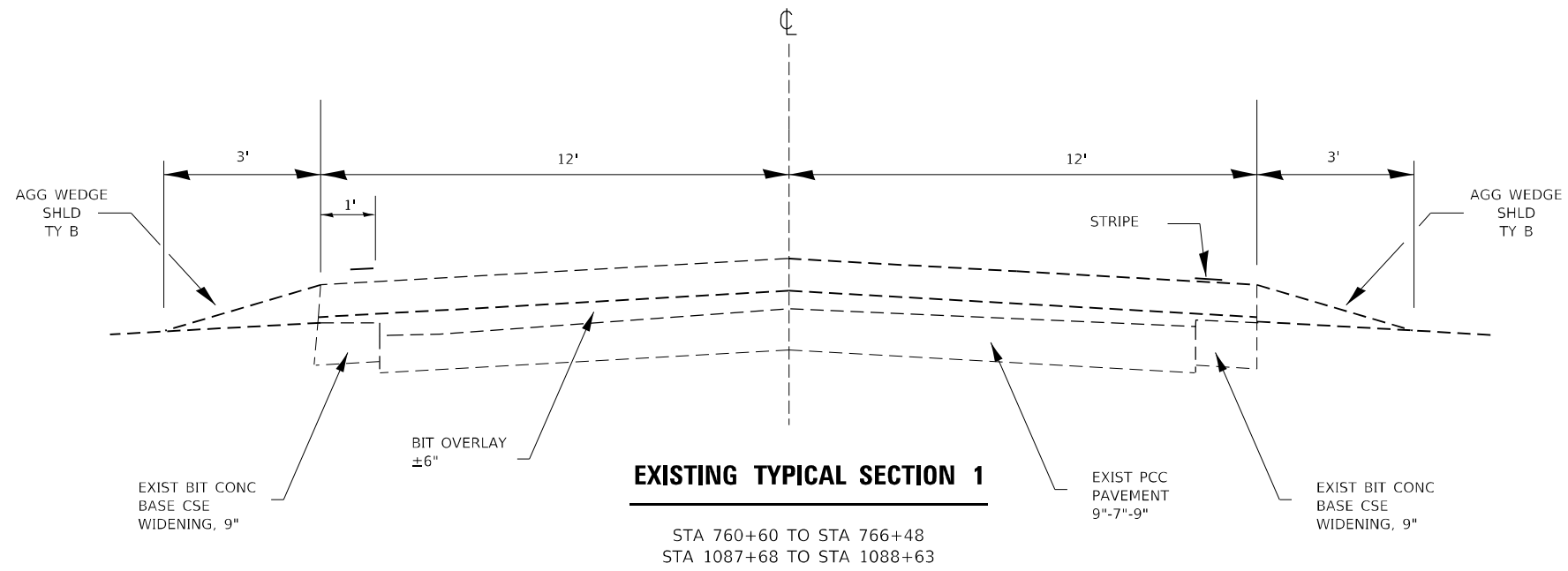
USER NAME = NOLASCOCJ	DESIGNED -	REVISED -
	DRAWN -	REVISED -
PLOT SCALE = 100,0000 ' / in.	CHECKED -	REVISED -
PLOT DATE = 3/18/2021	DATE -	REVISED -

**STATE OF ILLINOIS
DEPARTMENT OF TRANSPORTATION**

SUMMARY OF QUANTITIES

SCALE: SHEET OF SHEETS STA. TO STA.

F.A.P. RTE.	SECTION	COUNTY	TOTAL SHEETS	SHEET NO.
607	(126,127)RS-5	KENDALL	28	7
ILLINOIS FED. AID PROJECT			CONTRACT NO. 66D51	



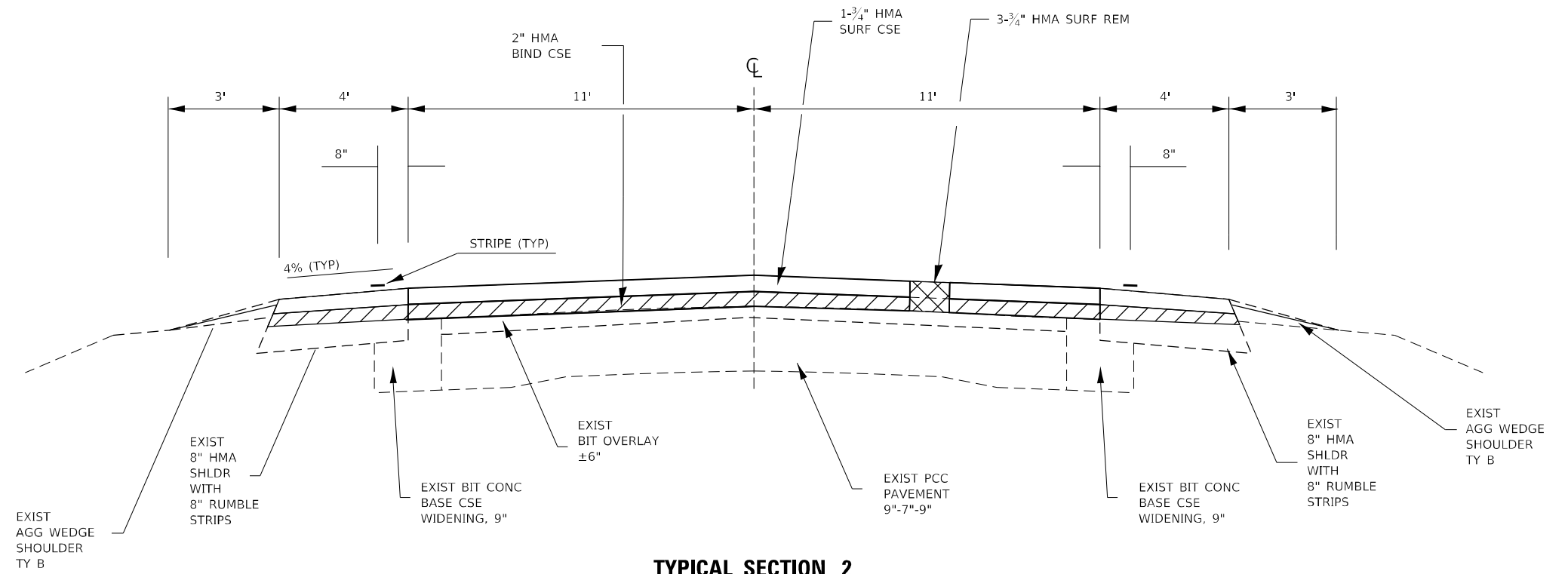
MODEL: Default
 FILE NAME: p:\pub\mbaronm.dwt\illinois.gov\PWIDOT\Documents\IBDOT_Office\Drawings\3\Projects\1036605\1\CAD\Drawings\1-21-21\typical.dwg

USER NAME = NOLASCOCJ	DESIGNED -	REVISED -
	DRAWN -	REVISED -
PLOT SCALE = 100,0000' / in.	CHECKED -	REVISED -
PLOT DATE = 3/18/2021	DATE -	REVISED -

STATE OF ILLINOIS
DEPARTMENT OF TRANSPORTATION

TYPICAL SECTIONS				
SCALE:	SHEET	OF	SHEETS	STA. TO STA.

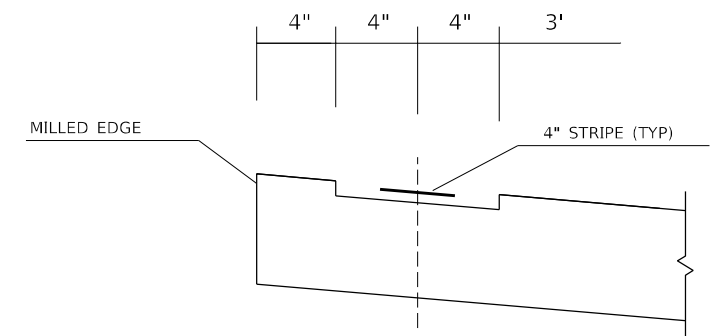
F.A.P. RTE.	SECTION	COUNTY	TOTAL SHEETS	SHEET NO.
607	(126,127)RS-5	KENDALL	28	8
CONTRACT NO. 66D51				
ILLINOIS FED. AID PROJECT				



TYPICAL SECTION 2

STA 766+48 TO STA 1087+68

RUMBLE STRIP DETAIL



MODEL: Default
 FILE NAME: p:\pub\mroom.dwt\illinois.gov\PWIDOT\Documents\IDOT_Office\District_3\Projects\ID366D51\CADD\sta0366D51-2\ntstypical.dgn

USER NAME = NOLASCOCJ	DESIGNED -	REVISED -
	DRAWN -	REVISED -
PLOT SCALE = 100,0000' / in.	CHECKED -	REVISED -
PLOT DATE = 3/18/2021	DATE -	REVISED -

**STATE OF ILLINOIS
DEPARTMENT OF TRANSPORTATION**

TYPICAL SECTIONS

SCALE: SHEET OF SHEETS STA. TO STA.

F.A.P. RTE.	SECTION	COUNTY	TOTAL SHEETS	SHEET NO.
607	(126,127)RS-5	KENDALL	28	9
CONTRACT NO. 66D51				
ILLINOIS FED. AID PROJECT				

PERMANENT SURVEY MARKERS						
MONUMENT NUMBER	DESCRIPTION	APPROXIMATE LOCATION	EXISTING MONUMENT TYPE	PROPOSED MONUMENT TYPE	MONUMENT RECORD TO BE RECORDED	RESPONSIBILITY
052301	SW CORNER SECTION 23, T35N, R6E, 3RD PM	1/2 MILE WEST OF SCOTT SCHOOL ROAD	PK NAIL	TYPE 1	YES	1
052304	E QTR CORNER SECTION 24, T35N, R6E, 3RD PM	2000' +/- N OF LISBON ROAD	BRASS DISK	TYPE 1	NO	1
052310	W QTR CORNER SECTION 19, T35N, R7E, 3RD PM	2065' +/- N OF LISBON ROAD	BRASS DISK	TYPE 1	NO	1
052307	W QTR CORNER SECTION 16, T35N, R7E, 3RD PM	1/2 MILE WEST OF RTE 47	SURVEY NAIL	TYPE 1	YES	1

UNKNOWN MONUMENTS SET BY OTHERS MAY EXIST. IF FOUND, R.E. MUST TIE AND REQUEST PLATS AND PLANS PERSONNEL TO GPS ANY MONUMENT(S) SUBJECT TO DAMAGE OR DESTRUCTION FROM THE CONSTRUCTION WORK, AND INFORM THEM TO RESET THE MONUMENT(S) WHEN CONSTRUCTION IS COMPLETE. R.E. IS TO INFORM THE PLATS AND PLANS SECTION TO SEARCH FOR ADDITIONAL MONUMENTS IF THE JOB LIMITS ARE EXPANDED DURING CONSTRUCTION. UPON PAVING COMPLETION, R.E. WILL DIRECT PLATS AND PLANS PERSONNEL TO STAKE THE LOCATIONS FOR TYPE 1 MONUMENT CORING. PLATS AND PLANS WILL PREPARE AND RECORD THE REQUIRED MONUMENT RECORDS.

NOTE: FOR BIDDING PURPOSES, NO CONTRACTED LAND SURVEYING SERVICES WILL BE REQUIRED FOR SETTING THE LISTED PERMANENT SURVEY MARKERS.

RESPONSIBILITY:

1) RESIDENT TO RE-ESTABLISH MONUMENT (PAY ITEM REQUIRED. PERMANENT SURVEY MARKER, TYPE 1)

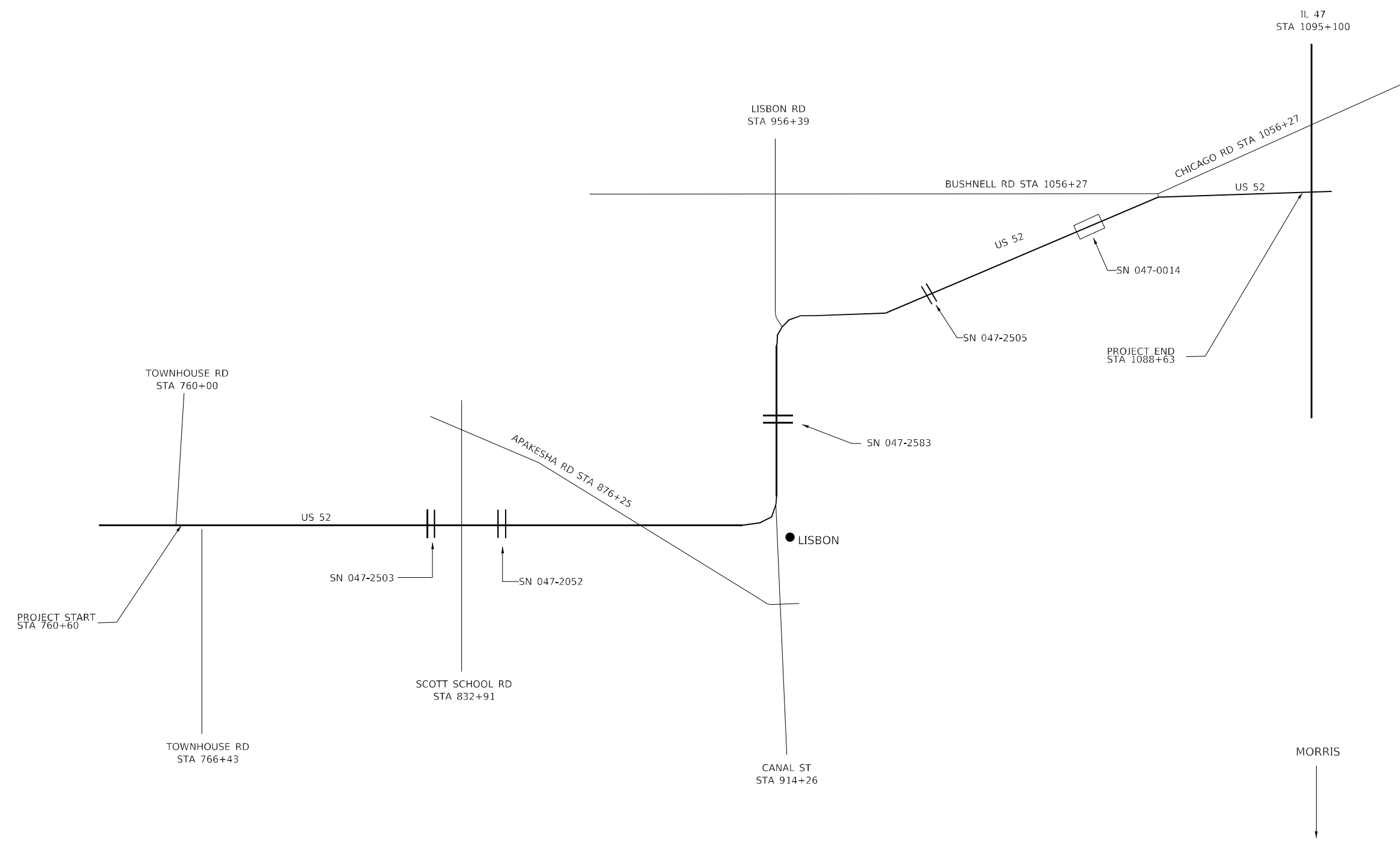
2) PLATS AND PLANS TO RE-ESTABLISH MONUMENT

MODEL: Default
FILE NAME: p:\planningroom\dot.illinois.gov\PWDOT\Documents\DOT_Offices\District 3\Projects\0366051\CADD\0366051-entire.dwg
PROJECT: 0366051-CADD\0366051-entire.dwg

USER NAME = NOLASCOCJ	DESIGNED -	REVISED -	STATE OF ILLINOIS DEPARTMENT OF TRANSPORTATION	PERMANENT SURVEY MARKING	F.A.P. RTE. 607	SECTION (126,127)RS-5	COUNTY KENDALL	TOTAL SHEETS 28	SHEET NO. 10
PLOT SCALE = 100,0000 ' / in.	CHECKED -	REVISED -			CONTRACT NO. 66D51				
PLOT DATE = 3/18/2021	DATE -	REVISED -			SCALE:	SHEET OF SHEETS STA. TO STA.	ILLINOIS FED. AID PROJECT		



● PLATTVILLE



MODEL: Default
 FILE NAME: p:\planningroom\dot\illinois\dot\pww\dot\Documents\DOT_Offices\District 3\Projects\0366D51\CADD\0366D51-int-line_diagram.dwg
 PLOT DATE: 3/18/2021

USER NAME = NOLASCOCJ	DESIGNED -	REVISED -
PLOT SCALE = 100,0000' / in.	DRAWN -	REVISED -
PLOT DATE = 3/18/2021	CHECKED -	REVISED -
	DATE -	REVISED -

**STATE OF ILLINOIS
DEPARTMENT OF TRANSPORTATION**

LINE DIAGRAM				
SCALE:	SHEET	OF	SHEETS	STA. TO STA.

F.A.P. RTE. 607	SECTION (126,127)RS-5	COUNTY KENDALL	TOTAL SHEETS 28	SHEET NO. 11
CONTRACT NO. 66D51				
ILLINOIS FED. AID PROJECT				

MAINLINE & SHOULDER WIDENING SCHEDULE																	
LOCATION	LENGTH	WIDTH	RESURF AREA	HMA SURF REM 3.75"	HMA SURF CSE IL 9.5 MIX C, N50 1.75"	HMA BIND CSE IL-9.5, N50 2"	MATL TRANS DEVICE	BIT MATL (TACK COAT)	MIX CRACKS JTS & FLANGEWAYS	HMA BINDER CSE (HM) N50	LONG JOINT SEAL	TEMP RAMP	AGG WEDGE SHLD TY B	SHOULDER RUMBLE STRIPS, 8"	SHOULDER REM (SPECIAL)	HMA SHOULDERS 8"	
STATION	FOOT	FOOT	SQ FT	SQ YD	TON	TON	TON	POUND	TON	TON	FOOT	SQ YD	TON	FT	SQ YD	SQ YD	
STA 760+60 TO STA 766+48 *	588	24	14112	1568	154	176	330	1411	0.5	0.8	588	33	22	1176	65	523	
STA 766+48 TO STA 841+18	7470	40	298800	33200	3254	3718	6972	22410	10	16.6	7470	56	282	14940			
STA 841+18 TO STA 904+65	6347	30	190410	21157	2073	2370	4443	14281	6.3	10.6	6347	42	240	12694			
STA 904+65 TO STA 915+09	1044	30	31320	3480	341	390	731	2349	1	1.7	1044		39	2088			
STA 915+09 TO STA 950+00	3491	30	104730	11637	1140	1303	2443	7855	3.5	5.8	3491		132	6982			
STA 950+00 TO STA 964+26 BK	1426	30	42780	4753	466	532	998	3209	1.4	2.4	1426		54	2852			
STA 963+17 AH TO STA 964+77	160	30	4800	533	52	60	112	360	0.2	0.3	160		6	320			
STA 964+77 TO STA 1037+78	7301	30	219030	24337	2385	2726	5111	16427	7.3	12.2	7301	42	276	14602			
STA 1037+78 TO STA 1038+62	84	40	3360														
STA 1038+62 TO STA 1087+68	4906	30	147180	16353	1603	1832	3435	11039	4.9	8.2	4906	42	186	9812			
STA 1087+68 TO STA 1088+63 *	95	35	3325	369	36	41	77	306	0.1	0.2	95	49	4	190	11	84	
TOTAL				117387	11504	13148	24652	79647	35.2	58.8	32828	264	1241	65656	76	607	

*SHOULDER WIDENING AND RUMBLE STRIPS

SIDE ROAD SCHEDULE										
LOCATION	LENGTH	WIDTH	RESURF AREA	HMA SURF REMOVAL VARIABLE DEPTH	BITUMINOUS MATERIAL (TACK COAT)	INCIDENTAL HMA SURFACING	TEMP RAMP	FURNISHED EXCAVATION		
ROAD NAME	SIDE	STATION	FT	FT	SQ FT	SQ YD	TON	SQ YD	CU YD	
TOWNHOUSE RD (SOUTH)	RT	766+43	30	45	1350	150	68	23	25	1.3
SCOTT SCHOOL RD (NORTH)	RT	832+91	30	48	1440	160	72	25	27	1.3
SCOTT SCHOOL RD (SOUTH)	LT	832+91	30	43	1290	143	65	22	24	1.3
APAKESHA RD (NORTH)	RT	876+25	60	84	5040	560	252	86	47	2.8
APAKESHA RD (SOUTH)	LT	876+25	30	67	2010	223	101	34	37	1.3
N CANAL ST	RT	914+26	100	107	10700	1189	535	183	59	4.7
LISBON RD	LT	956+39	30	50	1500	167	75	26	28	1.3
BUSHNELL/CHICAGO RD	LT	1056+27	30	68	2040	227	102	35	38	1.3
TOTAL						2819	1270	434	285	15.3

GUARDRAIL SCHEDULE											
LOCATION	SIDE	LENGTH OF NEED	GUARDRAIL REM	LONG-SPAN GUARDRAIL OVER CULVERT, 12.5 FT SPAN	LONG-SPAN GUARDRAIL OVER CULVERT, 25 FT SPAN	STEEL PLATE BEAM GUARDRAIL TYPE A, 6 FT POSTS	TBT TYPE 1 (SPL) TANGENT	GUARDRAIL REFLECTORS, TYPE A	HMA STABILIZATION 6" AT STEEL PLATE BEAM GUARDRAIL	TERMINAL MARKER DIRECT APPLIED	LINEAR DELINEATOR PANELS 4 INCH
		FOOT	FOOT	FOOT	FOOT	FOOT	EACH	EACH	SQ YD	EACH	EACH
STA 818+70.0 TO STA 820+82.5	LT	187.5	187.5		25.0	87.5	2	3	39	2	3
STA 818+27.5 TO STA 820+40.0	RT	187.5	187.5		25.0	87.5	2	3	39	2	3
STA 994+59.0 TO STA 997+34.0	LT	275.0	275.0	37.5		137.5	2	4	61	2	4
STA 994+32.5 TO STA 997+32.5	RT	275.0	275.0	37.5		137.5	2	4	61	2	4
TOTAL			925.0	75.0	50.0	450.0	8	14	200	8	14

MODEL: Default
FILE NAME: p:\m\m\room.dwg
PROJECT: I:\CADD\DATA\366051\CADD\DATA\366051-INT\schedule.dgn

USER NAME = NOLASCOCJ	DESIGNED -	REVISED -
	DRAWN -	REVISED -
PLOT SCALE = 100,0000' / in.	CHECKED -	REVISED -
PLOT DATE = 3/18/2021	DATE -	REVISED -

**STATE OF ILLINOIS
DEPARTMENT OF TRANSPORTATION**

SCHEDULE OF QUANTITIES			
SCALE:	SHEET	OF	SHEETS

F.A.P. RTE.	SECTION	COUNTY	TOTAL SHEETS	SHEET NO.
607	(126,127)RS-5	KENDALL	28	12
CONTRACT NO. 66D51				
ILLINOIS FED. AID PROJECT				

ENTRANCES & MAILBOX SCHEDULE									
LOCATION	SIDE	TYPE	MAT'L	WIDTH	AREA	HMA SURF REMOVAL VARIABLE DEPTH	BITUMINOUS MATERIALS (TACK COAT)	INCIDENTAL HMA SURFACING	AGG WEDGE SHLD TYPE B
				FT	SQ FT	SQ YD	POUND	TON	TON
STA 761+82	LT	FE	AGG	30	90				0.6
STA 788+03	LT	CE	AGG	70	210				1.3
STA 790+38	LT	CE	AGG	50	150				0.9
STA 826+18	RT	PE/MBTO	HMA	40	400	44	20	7	
STA 851+69	LT	FE	AGG	20	60				0.4
STA 851+69	RT	FE	AGG	20	60				0.4
STA 859+49	RT	FE	AGG	30	90				0.6
STA 869+87	LT	CE	AGG	60	180				1.1
STA 873+72	LT	FE	AGG	30	90				0.6
STA 873+79	RT	FE	AGG	22	66				0.4
STA 879+28	LT	FE	AGG	15	45				0.3
STA 881+27	RT	PE/MBTO	HMA	33	330	37	17	6	
STA 885+92	LT	PE	HMA	38	380	42	19	6	
STA 886+76	RT	PE/MBTO	AGG	100	300				1.9
STA 887+73	LT	PE	HMA	32	320	36	16	6	
STA 888+92	RT	PE	HMA	26	260	29	13	4	
STA 892+59	RT	FE	AGG	22	66				0.4
STA 899+34	LT	FF	AGG	20	60				0.4
STA 906+89	RT	FE	AGG	20	60				0.4
STA 915+62	LT	PE/MBTO	HMA	50	500	56	25	9	
STA 919+78	LT	PE	HMA	40	400	44	20	7	
STA 926+79	LT	FE	AGG	20	60				0.4
STA 930+07	RT	FE	AGG	20	60				0.4
STA 936+51	LT	MBTO	HMA	32	320	36	16	6	
STA 936+79	RT	CE	HMA	50	500	56	25	9	
STA 940+72	RT	FE	AGG	45	135				0.9
STA 940+72	LT	FE	AGG	20	60				0.4
STA 945+79	LT	PE/MBTO	HMA	70	700	78	35	12	
STA 947+38	LT	FE	AGG	30	90				0.6
STA 952+08	RT	PE	AGG	21	63				0.4
STA 989+85	RT	PE	HMA	35	350	39	18	6	
STA 992+59	LT	MBTO	HMA	60	600	67	30	10	
STA 992+94	RT	PE	HMA	38	380	42	19	6	
STA 997+54	LT	PE/MBTO	HMA	65	650	72	33	11	
STA 999+23	LT	PE	HMA	40	400	44	20	7	
STA 1001+09	RT	PE	HMA	37	370	41	19	6	
STA 1001+33	LT	MBTO	HMA	70	700	78	35	12	
STA 1001+41	RT	PE	HMA	32	320	36	16	6	
STA 1013+67	RT	FE	AGG	28	84				0.5
STA 1031+94	RT	FE	AGG	20	60				0.4
STA 1031+94	LT	PE	HMA	31	310	34	16	5	
STA 1042+90	LT	FE	AGG	25	75				0.5
STA 1047+07	LT	PE/MBTO	HMA	90	900	100	45	15	
STA 1063+16	RT	FE	AGG	30	90				0.6
STA 1082+64	RT	FE	HMA	40	400	44	20	7	
STA 1082+64	LT	FE	HMA	40	400	44	20	7	
TOTAL						1099	497	170	15

MODEL: Default
 FILE NAME: p:\pub\mroom.dwt\illinois.gov\PWIDOT\Documents\DOT_Office\District_3\Project\0366051\CADD\0366051-ent-entrances.dgn

USER NAME = NOLASCOCJ	DESIGNED -	REVISED -	STATE OF ILLINOIS DEPARTMENT OF TRANSPORTATION	SCHEDULE OF QUANTITIES				F.A.P. RTE.	SECTION	COUNTY	TOTAL SHEETS	SHEET NO.
PLOT SCALE = 100,0000' / in.	DRAWN -	REVISED -						607	(126,127)RS-5	KENDALL	28	13
PLOT DATE = 3/18/2021	CHECKED -	REVISED -						CONTRACT NO. 66D51				
	DATE -	REVISED -		SCALE:	SHEET	OF	SHEETS	STA.	TO STA.	ILLINOIS FED. AID PROJECT		

PAVEMENT MARKINGS							
LOCATION	LENGTH	PAINT (2 APPLICATIONS)			RAISED REFL	RAISED REFL PVT MRK REMOVAL	
		4" LINE		6" LINE			
		WHITE	YELLOW	YELLOW	PVT MRK	EACH	EACH
STA 760+60 TO STA 770+40	980	3920	3920		25	25	
STA 770+40 TO STA 780+67	1027	4108	2054	514	13	13	
STA 780+67 TO STA 823+58	4291	17164		2146	54	54	
STA 823+58 TO STA 831+76	818	3272	1636	410	10	10	
STA 831+76 TO STA 833+16	140	560	560		4	4	
STA 833+16 TO STA 842+07	891	3564	1782	446	11	11	
STA 842+07 TO STA 896+15	5408	21632		2704	68	68	
STA 896+15 TO STA 902+30	615	2460	1230	308	8	8	
STA 902+30 TO STA 918+58	1628	6512	6512		41	41	
STA 918+58 TO STA 924+94	636	2544	1272	318	8	8	
STA 924+94 TO STA 942+65	1771	7084		886	22	22	
STA 942+65 TO STA 951+90	925	3700	1850	462	12	12	
STA 951+90 TO STA 964+26 BK	1236	4944	4944		31	31	
STA 963+17 AH TO STA 972+47	930	3720	1860	466	12	12	
STA 972+47 TO STA 977+47	500	2000		250	6	6	
STA 977+47 TO STA 983+55	608	2432	1216	304	8	8	
STA 983+55 TO STA 986+98	343	1372	1372		9	9	
STA 986+98 TO STA 997+34	1036	4144	2072	518	13	13	
STA 997+34 TO STA 1079+41	8207	32828		4104	103	103	
STA 1079+41 TO STA 1088+63	922	3688	3688		23	23	
TOTALS	32912		167616	13836	481	481	

SHORT TERM PAVEMENT MARKINGS				
LOCATION	LENGTH	SHORT TERM PVMT MARK	SHORT TERM PVMT MARK REMOVAL	
STATION	FOOT	FOOT	SQ FT	
STA 760+60 TO STA 770+40	980	98	33	
STA 770+40 TO STA 780+67	1027	103	34	
STA 780+67 TO STA 823+58	4291	429	143	
STA 823+58 TO STA 831+76	818	82	27	
STA 831+76 TO STA 833+16	140	14	5	
STA 833+16 TO STA 842+07	891	89	30	
STA 842+07 TO STA 896+15	5408	541	180	
STA 896+15 TO STA 902+30	615	62	21	
STA 902+30 TO STA 918+58	1628	163	54	
STA 918+58 TO STA 924+94	636	64	21	
STA 924+94 TO STA 942+65	1771	177	59	
STA 942+65 TO STA 951+90	925	93	31	
STA 951+90 TO STA 964+26 BK	1236	124	41	
STA 963+17 AH TO STA 972+47	930	93	31	
STA 972+47 TO STA 977+47	500	50	17	
STA 977+47 TO STA 983+55	608	61	20	
STA 983+55 TO STA 986+98	343	34	11	
STA 986+98 TO STA 997+34	1036	104	35	
STA 997+34 TO STA 1079+41	8207	821	274	
STA 1079+41 TO STA 1088+63	922	92	31	
TOTALS	32912	3294	1098	

MODEL Path: \\p11m1room.dca.illinois.gov\PIWDOT\Documents\DOT_Offices\District_3\Projects\0366D51\CADD\0366D51-int-struct\table.dgn
 FILE Name: \\p11m1room.dca.illinois.gov\PIWDOT\Documents\DOT_Offices\District_3\Projects\0366D51\CADD\0366D51-int-struct\table.dgn

USER NAME = NOLASCOCJ	DESIGNED -	REVISED -
	DRAWN -	REVISED -
PLOT SCALE = 100,0000' / in.	CHECKED -	REVISED -
PLOT DATE = 3/18/2021	DATE -	REVISED -

**STATE OF ILLINOIS
DEPARTMENT OF TRANSPORTATION**

SCHEDULE OF QUANTITIES			
SCALE:	SHEET	OF SHEETS	STA. TO STA.

F.A.P. RTE.	SECTION	COUNTY	TOTAL SHEETS	SHEET NO.
607	(126,127)RS-5	KENDALL	28	14
CONTRACT NO. 66D51				
ILLINOIS FED. AID PROJECT				

CULVERT SCHEDULE																		
STATION	TYPE/SIZE	STRUCTURE NUMBER	LOCATION DESCRIPTION	PIPE CULV	REM EXIST	SUBBASE GRANULAR	FILTER FABRIC	FURN EXCAVATION	STONE RIPRAP,	METAL FLARED	PIPE CULV	METAL FLARED	INSERTION CULVERT	METAL FLARED	PIPE CULVERTS,	INLET BOX,	CONC END SEC,	DELINEATORS
				REM	FLARED	MATERIAL			CLASS A4	END SEC	CLASS A,	END SEC	FLARED	END	CLASS A, TYPE 1,	STANDARD	STANDARD	
				FOOT	EACH	SQ YD	SQ YD	CU YD	SQ YD	EACH		EACH	FT	EACH	FOOT	EACH	EACH	EACH
790+80	24" CMP	987	0.5 MILE EAST OF TOWNHOUSE RD SOUTH	48	2										48	1	1	2
797+11	18" CLAY PIPE	939	0.6 MILE EAST OF TOWNHOUSE RD SOUTH										48	2				2
806+79	18" CLAY PIPE	940	0.8 MILE EAST OF TOWNHOUSE RD SOUTH	48	2										48	1	1	2
855+65	3X2 BOX CULVERT	942	SOUTH END SECTION, 0.4 MILE W OF APAKESHA RD		1													2
946+49	3X2 BOX CULVERT	947	WEST END SECTION, 990' W OF LISBON RD		1						1							2
1032+00	15" CMP	EAST SIDE OF HMA PE 1031+94	620' SW OF BRIDGE CL OMISSION	32	2	23	23	2.6	23	2	32							2
TOTAL				128	8	23	23	2.6	23	2	32	1	48	2	96	2	2	12

CULVERT MAINTENANCE SCHEDULE								
STATION	TYPE/SIZE	STRUCTURE NUMBER	LOCATION DESCRIPTION	BOX CULV	CHANNEL	STONE	FILTER	DELINEATORS
				TO BE CLEANED	EXCAVATION	RIPRAP,	FABRIC	
				EACH	CU YD	SQ YD	SQ YD	EACH
819+55	6X4 BOX CULVERT	047-2503	0.25 MILE W OF SCOTT SCH RD	1	33.3			2
996+30	10X7 BOX CULVERT	047-2505	1.1 MILE SW OF CHICAGO RD			20	20	2
1023+10	4X2 BOX CULVERT	948	0.6 MILE WEST OF CHICAGO RD	1	16.7			2
TOTAL				2	50.0	20	20	6

DITCH CLEANING SCHEDULE					
LOCATION	SIDE	LENGTH	FLOW DIRECTION	GRADING & SHAPING	
				FOOT	DITCH
STA 760+50 TO STA 762+00	NORTH	150	EAST	150	150
STA 777+50 TO STA 779+50	NORTH	200	EAST	200	200
STA 788+20 TO STA 789+00	NORTH	80	EAST	80	80
STA 790+50 TO STA 792+80	NORTH	230	EAST	230	230
STA 791+00 TO STA 793+00	SOUTH	200	EAST	200	200
STA 797+50 TO STA 798+50	SOUTH	100	EAST	100	100
STA 807+00 TO STA 808+50	SOUTH	150	EAST	150	150
STA 938+50 TO STA 940+00	EAST	150	SOUTH	150	150
STA 939+00 TO STA 940+00	WEST	100	SOUTH	100	100
STA 958+00 TO STA 960+00	SE	200	NE	200	200
STA 1032+30 TO STA 1033+50	NORTH	120	EAST	120	120
STA 1068+00 TO STA 1071+00	NORTH	300	EAST	300	300
TOTAL				1980	1980

PATCHING SCHEDULE			
LOCATION	PATCH LENGTH	PATCH WIDTH	CLASS D
			PATCH TYPE III
STA	FOOT	FOOT	SQ YD
790+80	6	30	20
806+79	6	30	20
TOTAL			40

MODEL: Default
 FILE NAME: p:\m\m\room.dwg
 PROJECT: I:\Projects\10366051\CADD\10366051-2\nt\schedule.dgn

USER NAME = NOLASCOCJ	DESIGNED -	REVISED -
	DRAWN -	REVISED -
PLOT SCALE = 100,0000' / in.	CHECKED -	REVISED -
PLOT DATE = 3/18/2021	DATE -	REVISED -

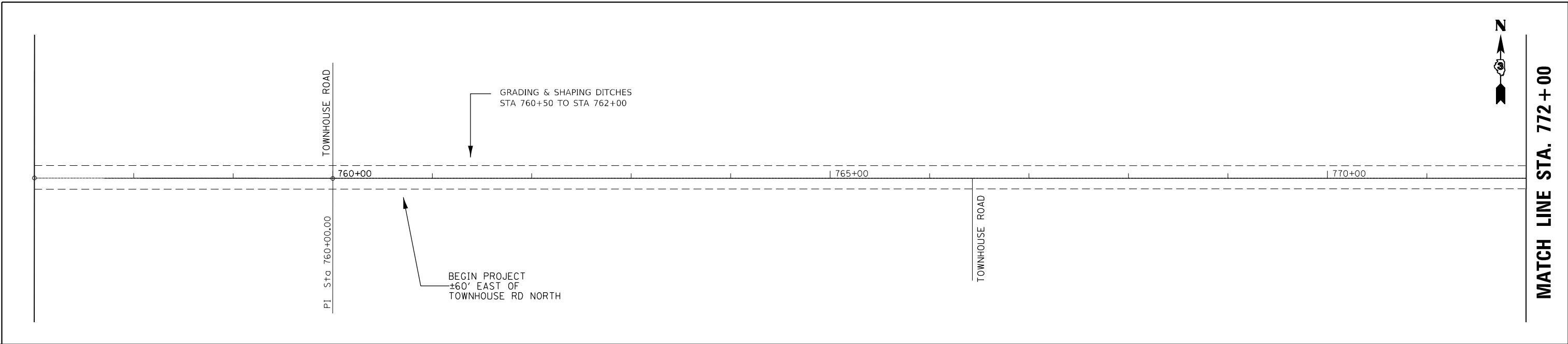
**STATE OF ILLINOIS
DEPARTMENT OF TRANSPORTATION**

SCHEDULE OF QUANTITIES

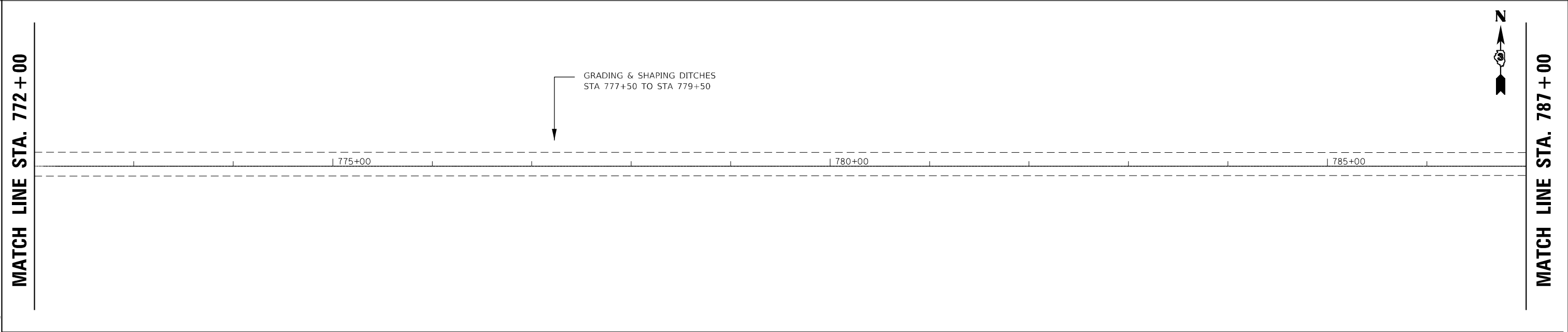
SCALE: SHEET OF SHEETS STA. TO STA.

F.A.P. RTE.	SECTION	COUNTY	TOTAL SHEETS	SHEET NO.
607	(126,127)RS-5	KENDALL	28	15
CONTRACT NO. 66D51				
ILLINOIS FED. AID PROJECT				

MODEL: Default
 FILE NAME: p:\u0000\m0000.dwg
 PROJECT: I:\Projects\66651\CAD\Drawings\66651-21tbls.dwg

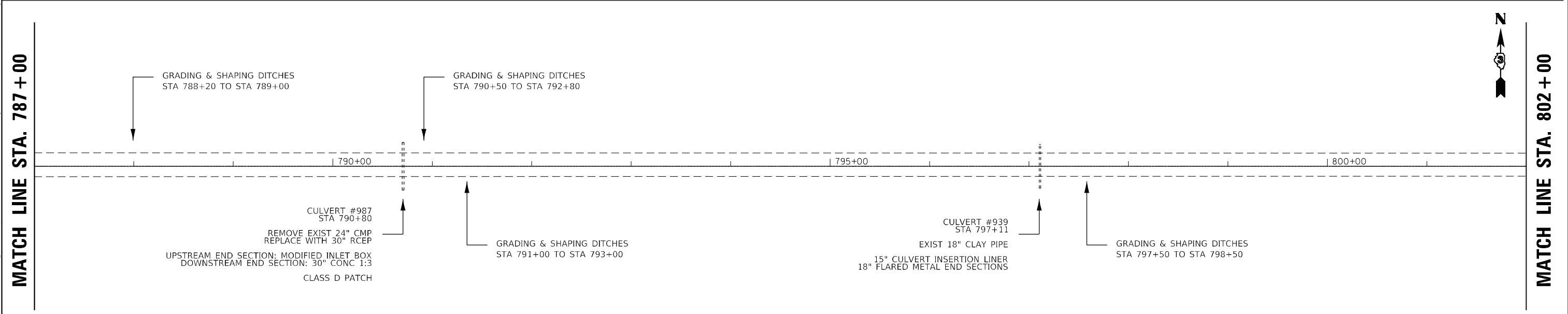


MATCH LINE STA. 772+00



MATCH LINE STA. 772+00

MATCH LINE STA. 787+00



MATCH LINE STA. 787+00

MATCH LINE STA. 802+00

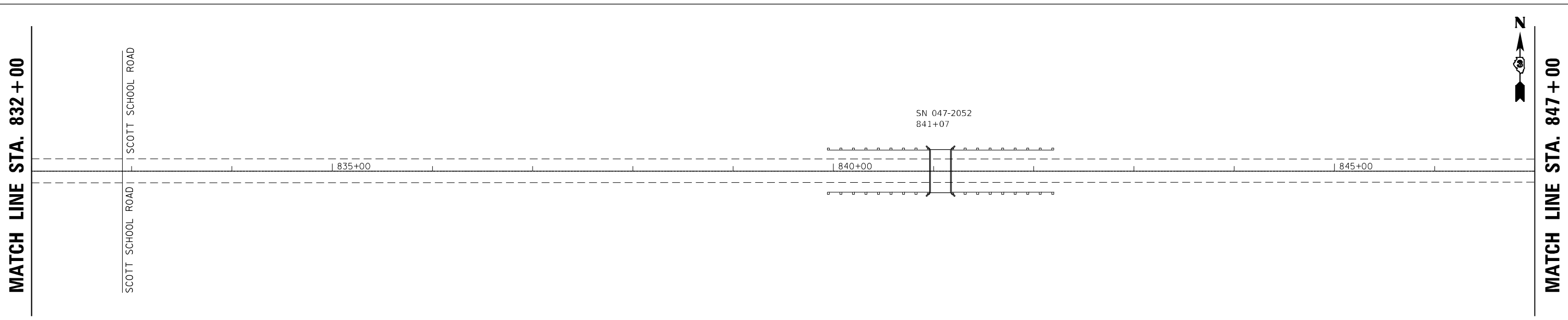
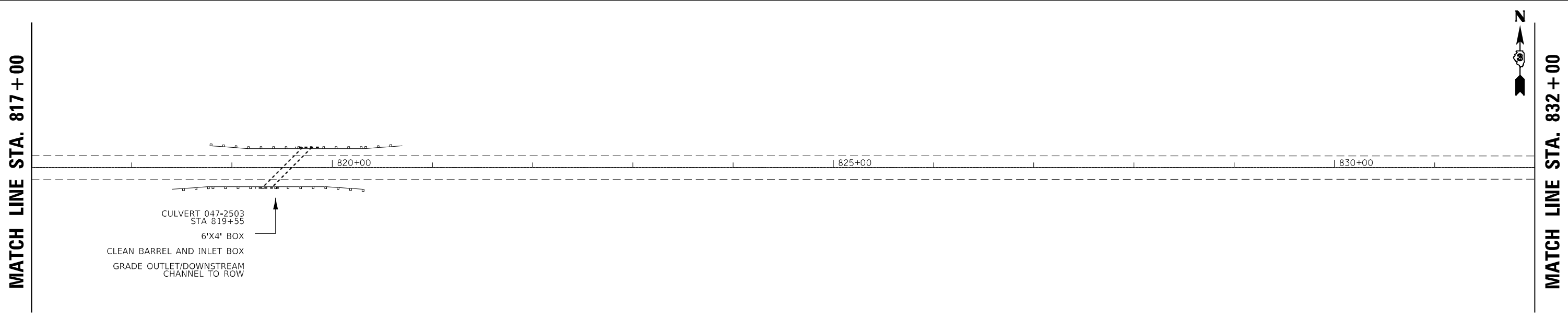
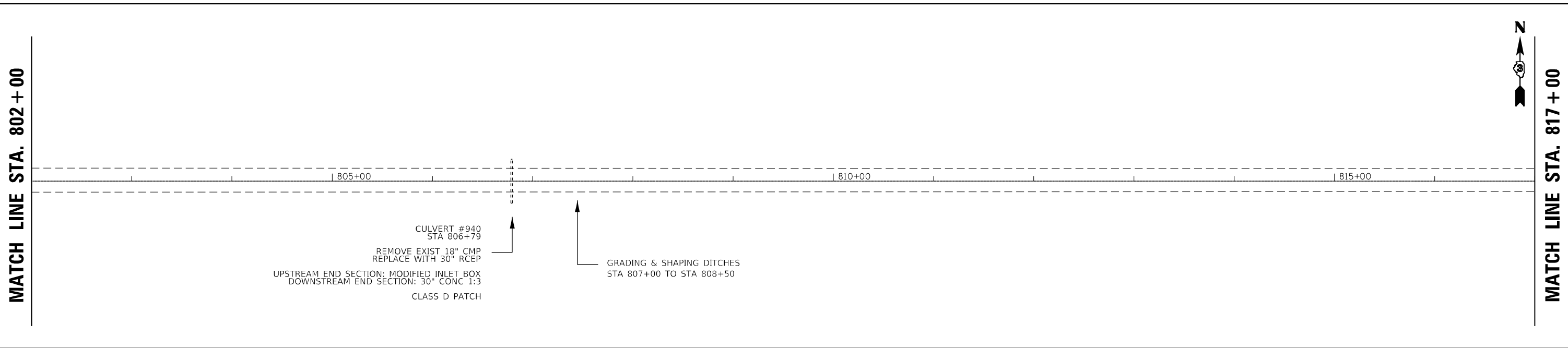
USER NAME = NOLASCOCJ	DESIGNED -	REVISED -
	DRAWN -	REVISED -
PLOT SCALE = 100,0000' / in.	CHECKED -	REVISED -
PLOT DATE = 3/18/2021	DATE -	REVISED -

**STATE OF ILLINOIS
 DEPARTMENT OF TRANSPORTATION**

PLAN VIEW			
SCALE:	SHEET	OF	SHEETS
	STA.	TO	STA.

F.A.P. RTE.	SECTION	COUNTY	TOTAL SHEETS	SHEET NO.
607	(126,127)RS-5	KENDALL	28	16
CONTRACT NO. 66D51			ILLINOIS FED. AID PROJECT	

MODEL: Default
 FILE NAME: p:\m\m\room.d\illinois\gov\PIW\DOT\Documents\DOT - Office\Drawings\3\Projects\0366051\CADD\0366051-2\tbl\tbl.dwg



USER NAME = NOLASCOCJ	DESIGNED -	REVISED -
	DRAWN -	REVISED -
PLOT SCALE = 100,0000' / in.	CHECKED -	REVISED -
PLOT DATE = 3/18/2021	DATE -	REVISED -

**STATE OF ILLINOIS
 DEPARTMENT OF TRANSPORTATION**

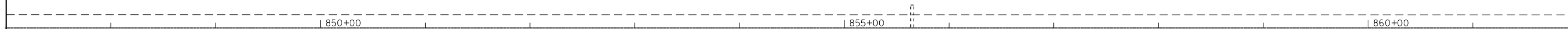
PLAN VIEW

SCALE: SHEET OF SHEETS STA. TO STA.

F.A.P. RTE.	SECTION	COUNTY	TOTAL SHEETS	SHEET NO.
607	(126,127)RS-5	KENDALL	28	17
CONTRACT NO. 66D51			ILLINOIS FED. AID PROJECT	

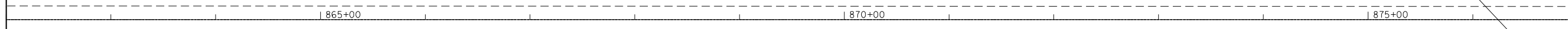
MODEL: Default
 FILE NAME: p:\u0000\m0000.dwg
 PROJECT: I:\Projects\2021\20210318\20210318.dwg

MATCH LINE STA. 847 + 00



MATCH LINE STA. 862 + 00

MATCH LINE STA. 862 + 00



MATCH LINE STA. 877 + 00

MATCH LINE STA. 877 + 00



MATCH LINE STA. 892 + 00

**STATE OF ILLINOIS
 DEPARTMENT OF TRANSPORTATION**

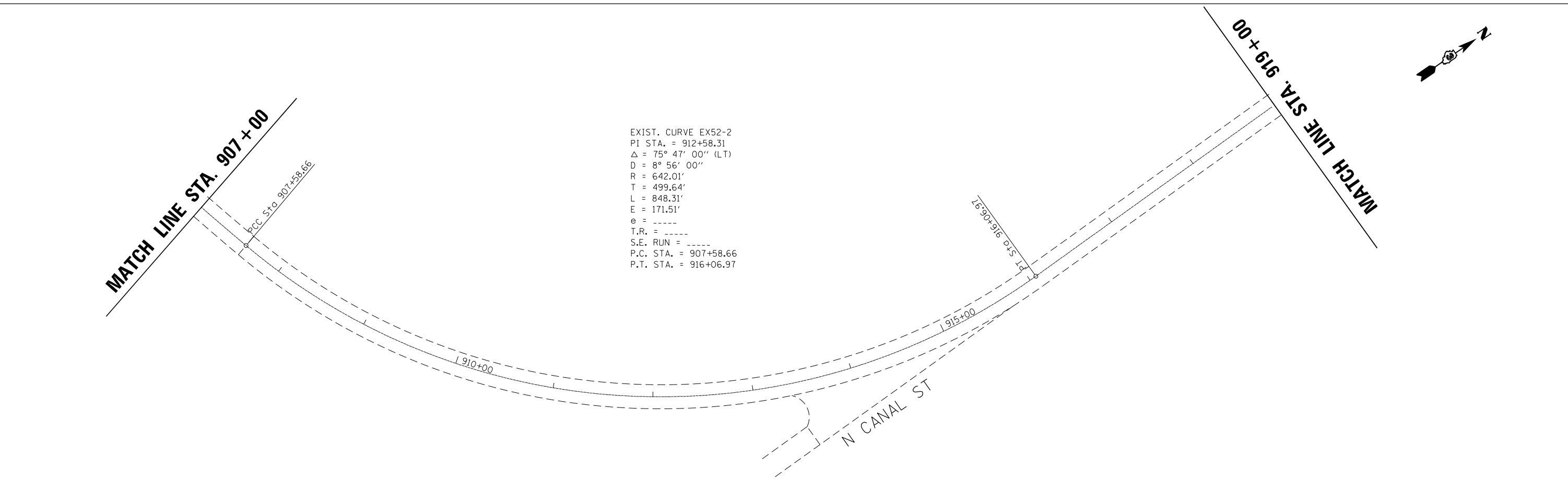
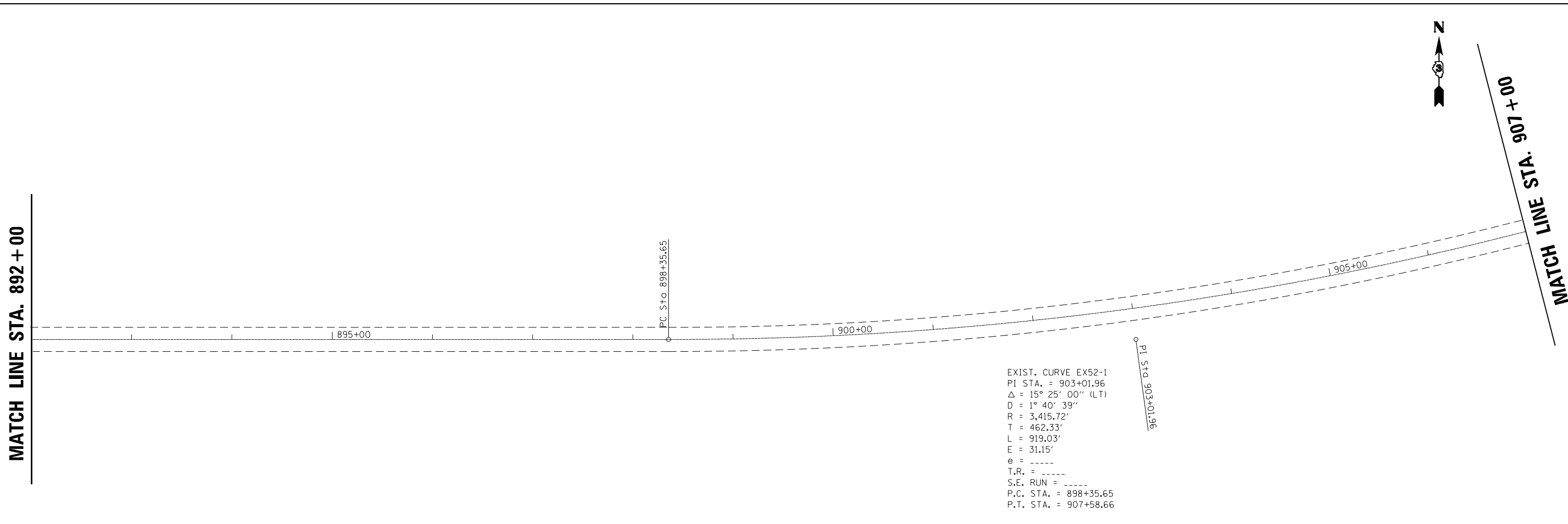
PLAN VIEW

USER NAME = NOLASCOCJ	DESIGNED -	REVISED -
	DRAWN -	REVISED -
PLOT SCALE = 100,0000' / in.	CHECKED -	REVISED -
PLOT DATE = 3/18/2021	DATE -	REVISED -

SCALE:	SHEET	OF	SHEETS	STA.	TO	STA.
--------	-------	----	--------	------	----	------

F.A.P. RTE.	SECTION	COUNTY	TOTAL SHEETS	SHEET NO.
607	(126,127)RS-5	KENDALL	28	18
CONTRACT NO. 66D51			ILLINOIS FED. AID PROJECT	

MODEL: Default
 FILE NAME: p:\u0000\m0000.dwg
 PROJECT: 126127RS-5
 OFFICE: J:\Projects\126127RS-5\126127RS-5.dwg



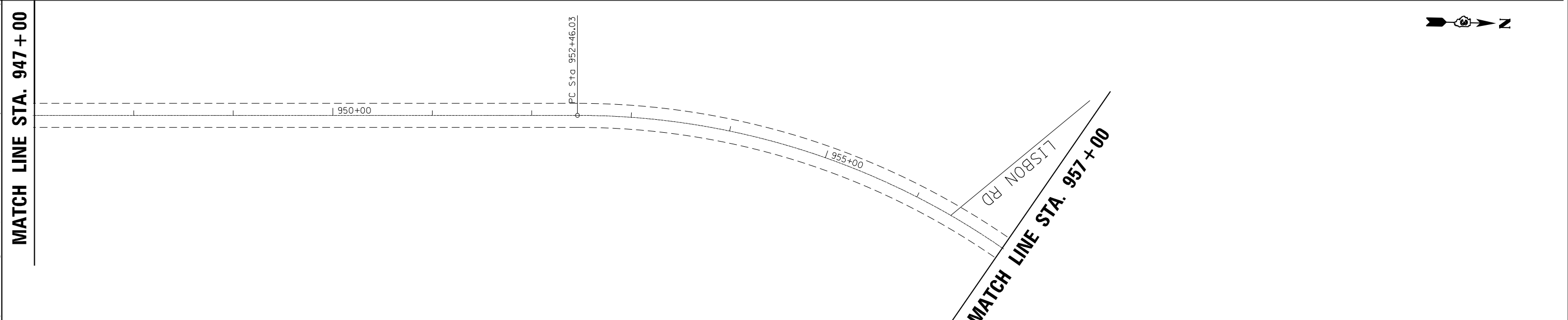
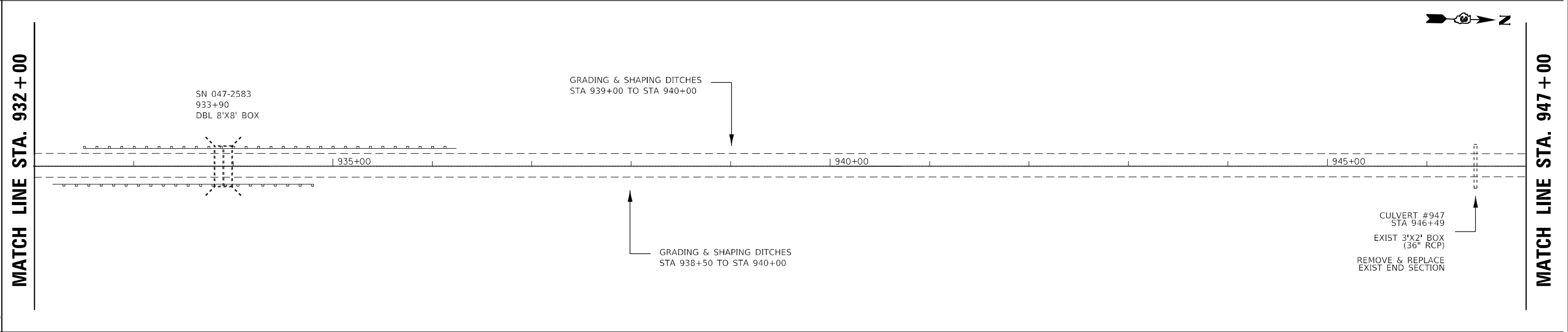
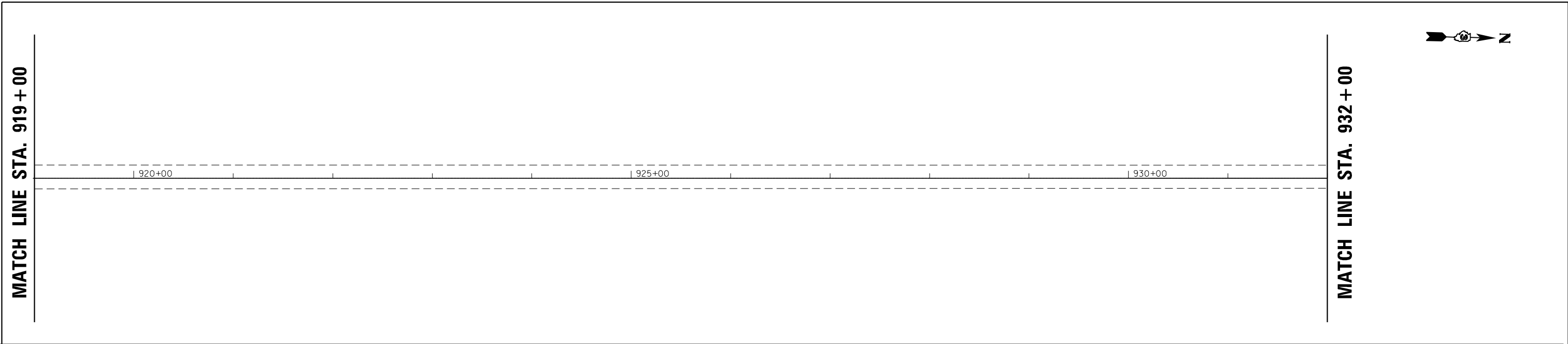
USER NAME = NOLASCOCJ	DESIGNED -	REVISED -
	DRAWN -	REVISED -
PLOT SCALE = 100,0000' / in.	CHECKED -	REVISED -
PLOT DATE = 3/18/2021	DATE -	REVISED -

STATE OF ILLINOIS
DEPARTMENT OF TRANSPORTATION

PLAN VIEW
 SCALE: SHEET OF SHEETS STA. TO STA.

F.A.P. RTE.	SECTION	COUNTY	TOTAL SHEETS	SHEET NO.
607	(126,127)RS-5	KENDALL	28	19
CONTRACT NO. 66D51				
ILLINOIS FED. AID PROJECT				

MODEL: Default
 FILE NAME: p:\pub\mroom.dwt\illinois.gov\PWIDOT\Documents\IDOT_Offices\Distrcfct_3\Projects\0366D51\CADD\0366D51-2\tbltbls.dwg



USER NAME = NOLASCOCJ	DESIGNED -	REVISED -
	DRAWN -	REVISED -
PLOT SCALE = 100,0000' / in.	CHECKED -	REVISED -
PLOT DATE = 3/18/2021	DATE -	REVISED -

**STATE OF ILLINOIS
 DEPARTMENT OF TRANSPORTATION**

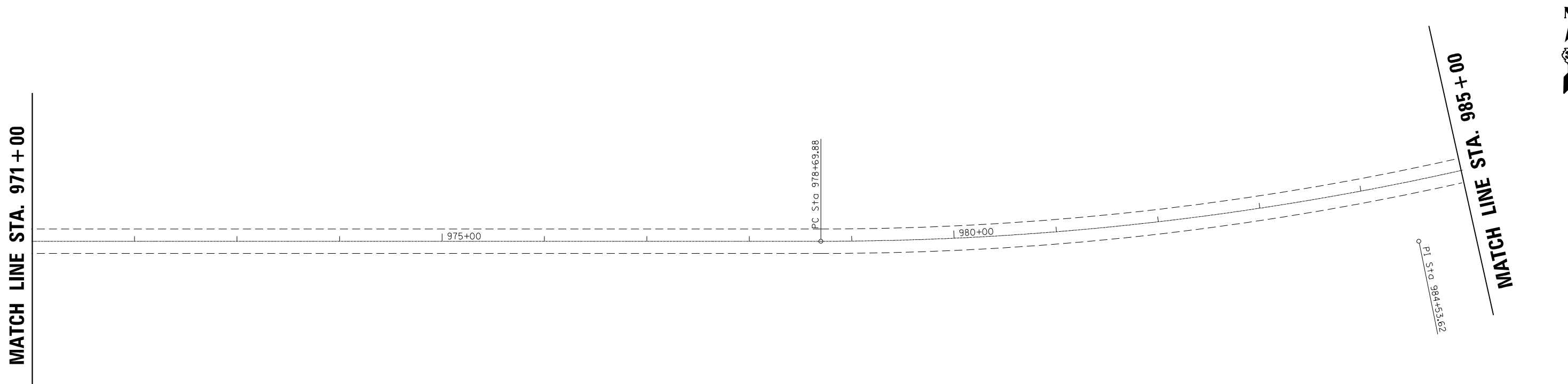
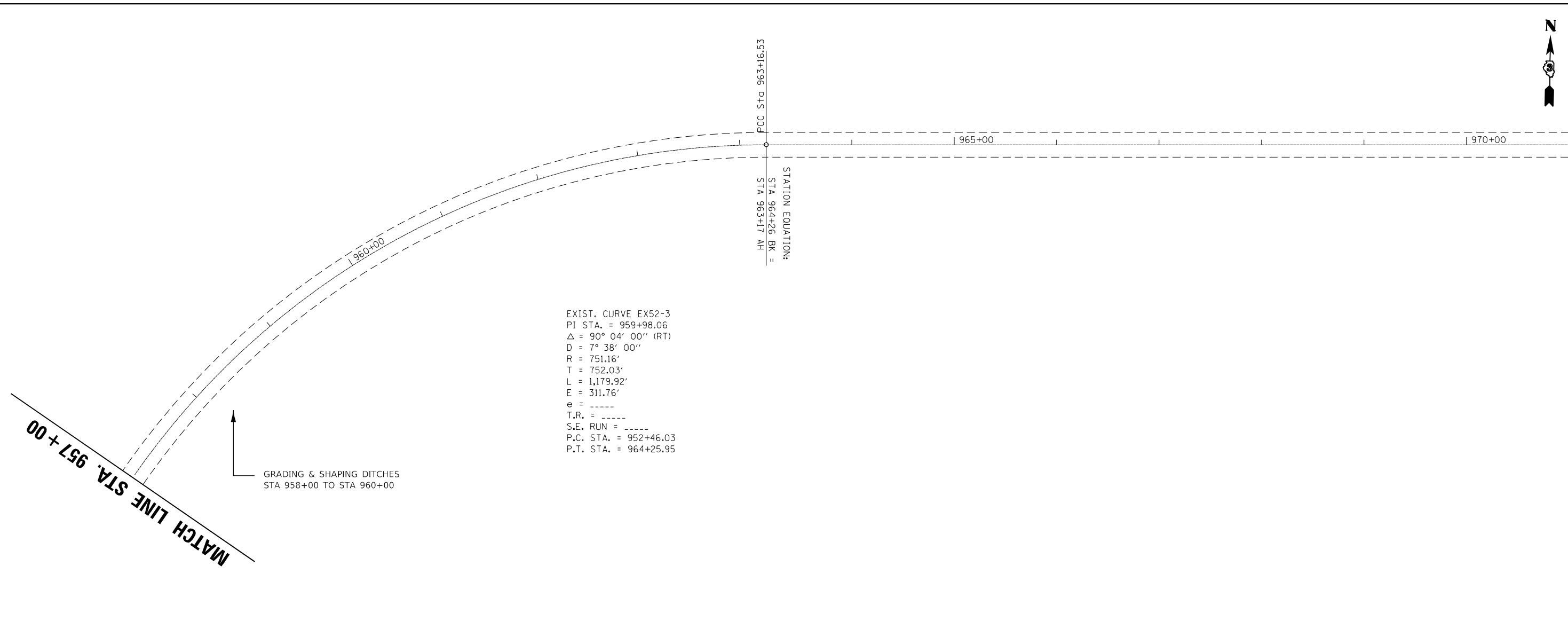
PLAN VIEW

SCALE: SHEET OF SHEETS STA. TO STA.

F.A.P. RTE.	SECTION	COUNTY	TOTAL SHEETS	SHEET NO.
607	(126,127)RS-5	KENDALL	28	20
CONTRACT NO. 66D51				
ILLINOIS FED. AID PROJECT				



MATCH LINE STA. 971 + 00



MODEL: Default
FILE NAME: p:\u0000\mroom.d\illinois.gov\PWDOT\Documents\DOT Office\Drawings\Projects\0366051\CADD\0366051-2\tblplan.dwg

USER NAME = NOLASCOCJ	DESIGNED -	REVISED -
DRAWN -	REVISED -	
PLOT SCALE = 100,0000' / in.	CHECKED -	REVISED -
PLOT DATE = 3/18/2021	DATE -	REVISED -

**STATE OF ILLINOIS
DEPARTMENT OF TRANSPORTATION**

PLAN VIEW			
SCALE:	SHEET	OF	SHEETS
	STA.	TO	STA.

F.A.P. RTE.	SECTION	COUNTY	TOTAL SHEETS	SHEET NO.
607	(126,127)RS-5	KENDALL	28	21
CONTRACT NO. 66D51				
ILLINOIS FED. AID PROJECT				

MODEL: Default
 FILE NAME: p:\m\m\room.d\illinois.gov\PIW\DOT\Documents\DOT - Office\Drawings\Projects\1036605\1\CAD\DATA\1036605-1-INT-PLAN.dwg

MATCH LINE STA. 985 + 00

EXIST. CURVE EX52-4
 PI STA. = 984+53.62
 $\Delta = 23^\circ 02' 00''$ (LT)
 $D = 2^\circ 00' 00''$
 $R = 2,864.93'$
 $T = 583.74'$
 $L = 1,151.66'$
 $E = 58.87'$
 $e = \text{-----}$
 $T.R. = \text{-----}$
 $S.E. RUN = \text{-----}$
 P.C. STA. = 978+69.88
 P.T. STA. = 990+21.54

985+00

990+00

PT Sta. 990+21.54

995+00

CULVERT 047-2505
 STA 996+30
 10'X7' BOX
 RR4 APRON (10 SQ YD AT EACH FACE)
 EXTENDING OUT TO 6' FROM CULVERT FACE

MATCH LINE STA. 1000 + 00



MATCH LINE STA. 1000 + 00

1000+00

1005+00

1010+00

MATCH LINE STA. 1015 + 00



MATCH LINE STA. 1015 + 00

1015+00

1020+00

1025+00

CULVERT #948
 STA 1023+10
 4'X2' BOX
 (42" RCP)
 CLEAN BARREL, GRADE OUTLET

MATCH LINE STA. 1030 + 00



USER NAME = NOLASCOCJ	DESIGNED -	REVISED -
	DRAWN -	REVISED -
PLOT SCALE = 100,0000' / in.	CHECKED -	REVISED -
PLOT DATE = 3/18/2021	DATE -	REVISED -

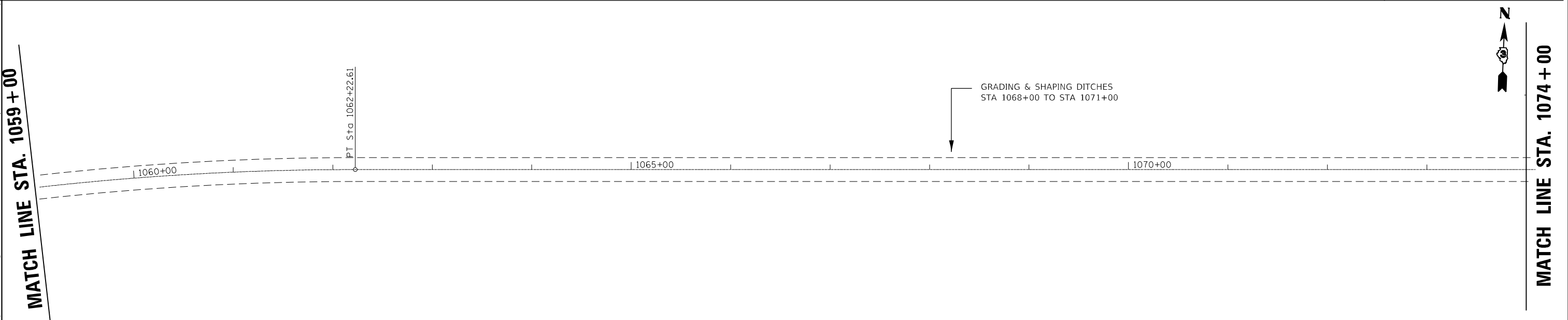
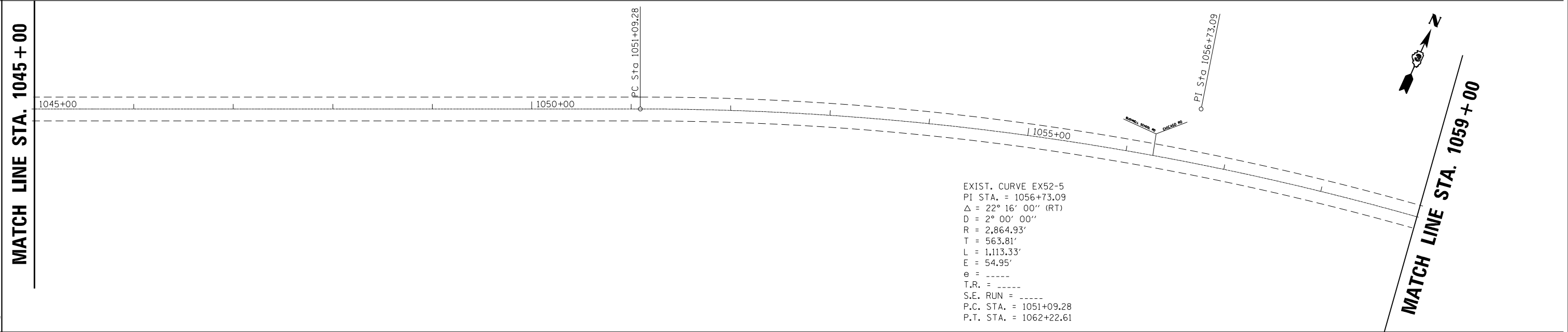
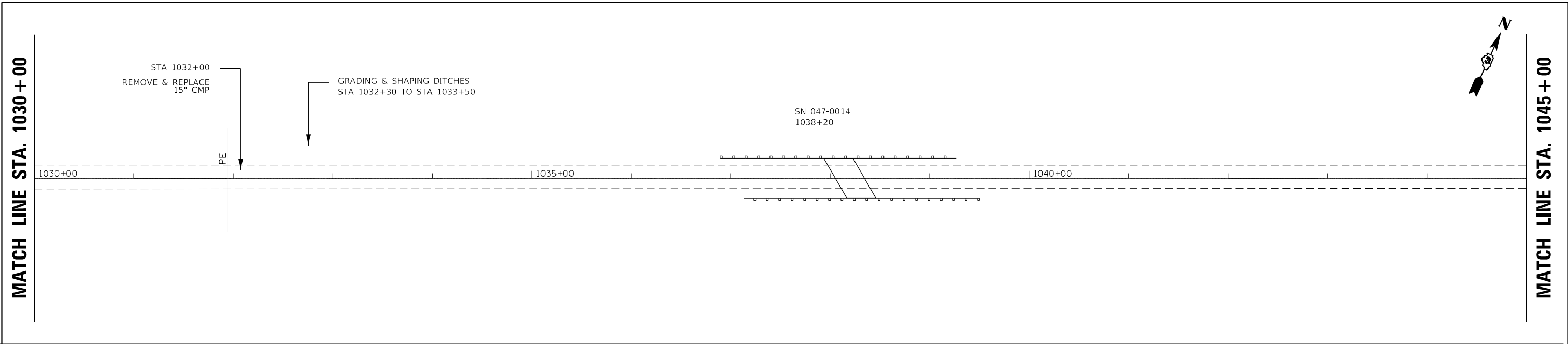
**STATE OF ILLINOIS
 DEPARTMENT OF TRANSPORTATION**

PLAN VIEW

SCALE: SHEET OF SHEETS STA. TO STA.

F.A.P. RTE.	SECTION	COUNTY	TOTAL SHEETS	SHEET NO.
607	(126,127)RS-5	KENDALL	28	22
CONTRACT NO. 66D51				
ILLINOIS FED. AID PROJECT				

MODEL Path: \\p01m0000.dct.illinois.gov\PIWDOT\Documents\DOT_Offices\District_3\Projects\0366051\CADD\0366051-21tbls.dwg
 FILE NAME: \\p01m0000.dct.illinois.gov\PIWDOT\Documents\DOT_Offices\District_3\Projects\0366051\CADD\0366051-21tbls.dwg



USER NAME = NOLASCOCJ	DESIGNED -	REVISED -
	DRAWN -	REVISED -
PLOT SCALE = 100,0000 ' / in.	CHECKED -	REVISED -
PLOT DATE = 3/18/2021	DATE -	REVISED -

**STATE OF ILLINOIS
DEPARTMENT OF TRANSPORTATION**

PLAN VIEW

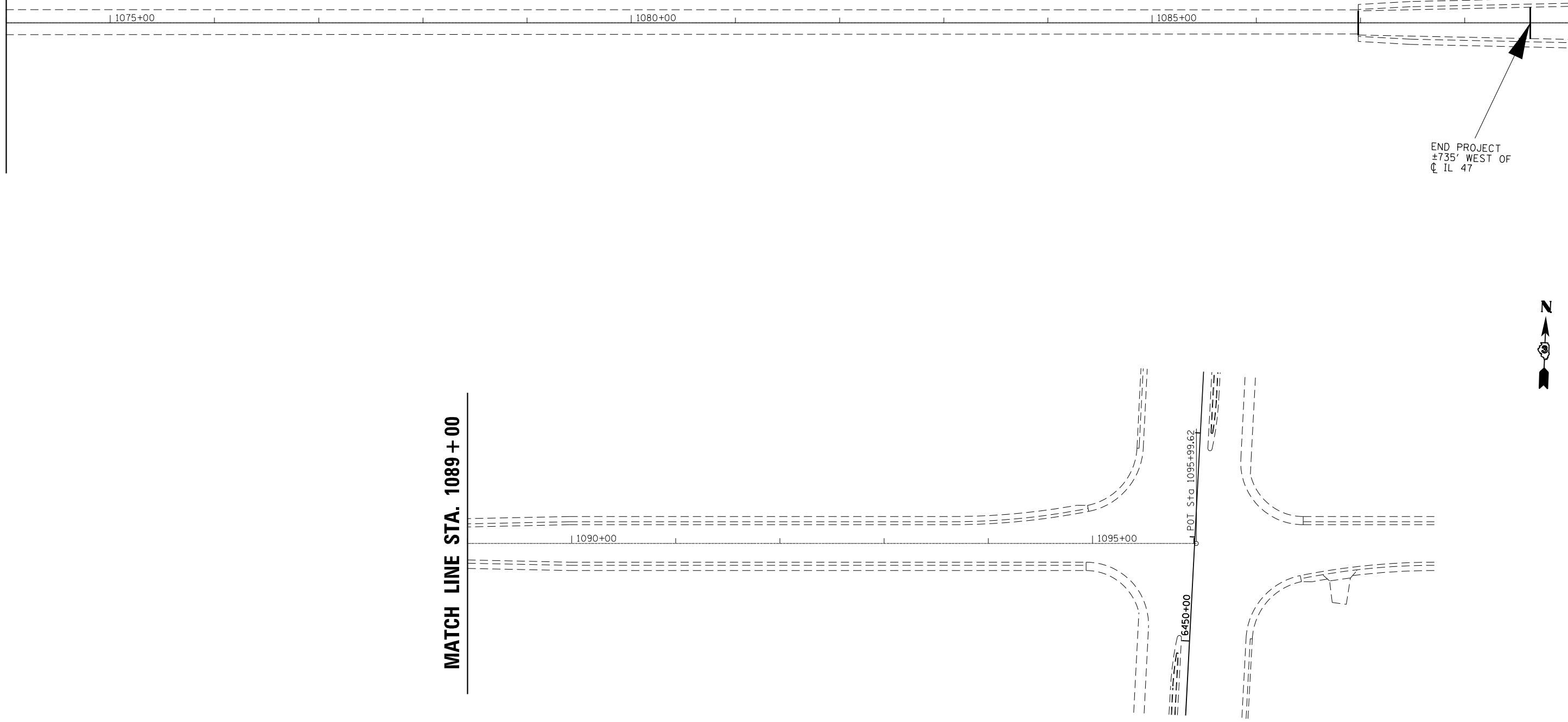
SCALE: SHEET OF SHEETS STA. TO STA.

F.A.P. RTE.	SECTION	COUNTY	TOTAL SHEETS	SHEET NO.
607	(126,127)RS-5	KENDALL	28	23
CONTRACT NO. 66D51				
ILLINOIS FED. AID PROJECT				

MODEL: Default
 FILE NAME: p:\u0000\workroom.dwt\illinois\dot\Documents\DOT_Offices\District 3\Projects\0366051\CADD\0366051-2\tblplan.dwg

MATCH LINE STA. 1074 + 00

MATCH LINE STA. 1089 + 00



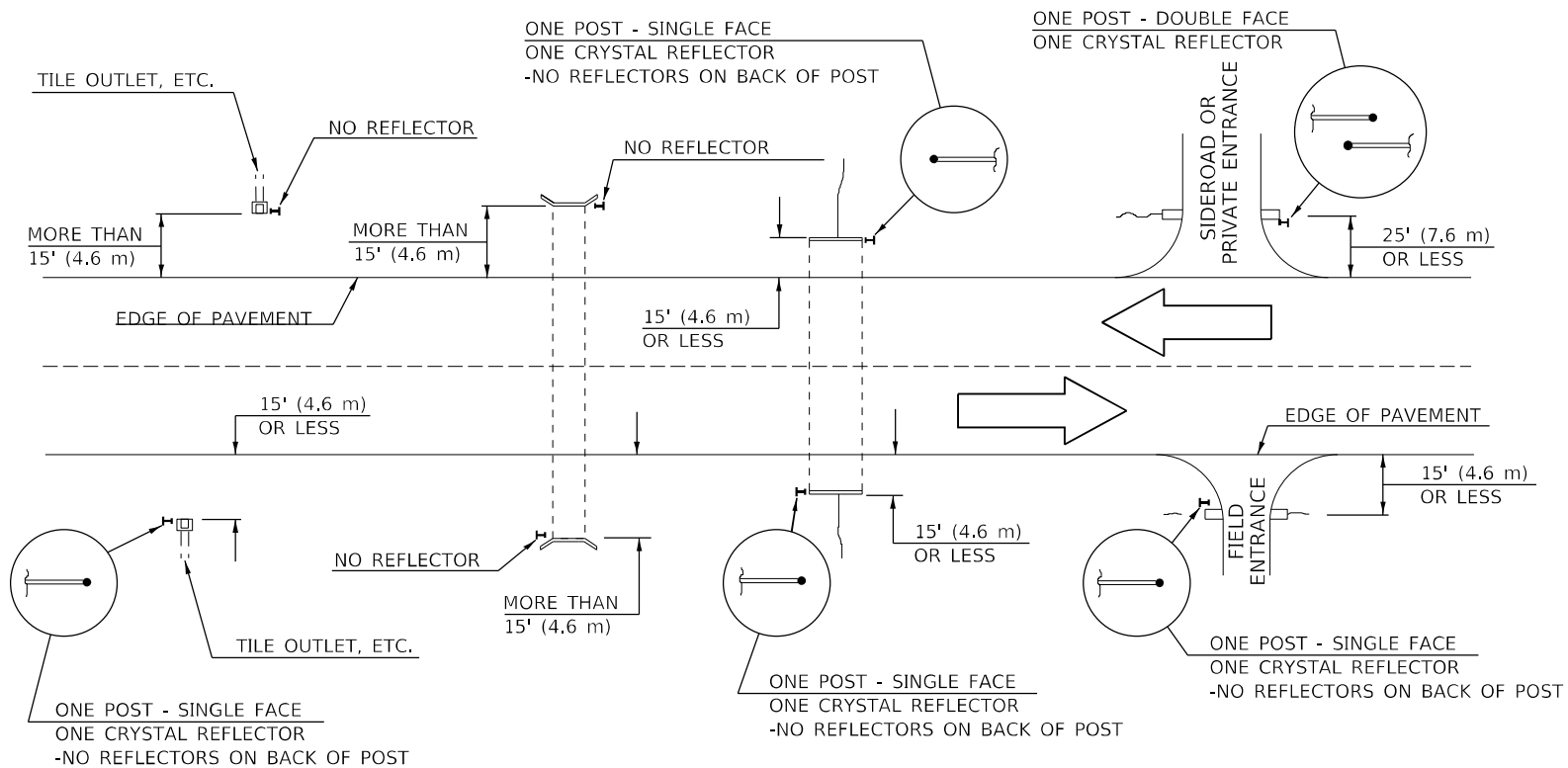
MATCH LINE STA. 1089 + 00

USER NAME = NOLASCOCJ	DESIGNED -	REVISED -
	DRAWN -	REVISED -
PLOT SCALE = 100,0000' / in.	CHECKED -	REVISED -
PLOT DATE = 3/18/2021	DATE -	REVISED -

**STATE OF ILLINOIS
 DEPARTMENT OF TRANSPORTATION**

PLAN VIEW			
SCALE:	SHEET	OF	SHEETS
	STA.	TO	STA.

F.A.P. RTE.	SECTION	COUNTY	TOTAL SHEETS	SHEET NO.
607	(126,127)RS-5	KENDALL	28	24
ILLINOIS FED. AID PROJECT			CONTRACT NO. 66D51	



IDENTIFICATION OF ROADSIDE HAZARDS FOR TWO-LANE ROADWAYS

BILL OF MATERIALS

DELINEATOR TYPE	SINGLE FACE	DOUBLE FACE	NO REFLECTOR	TOTAL DELINEATORS
SINGLE CRYSTAL	18		N/A	18
SINGLE CRYSTAL			TOTAL	18

NOTES

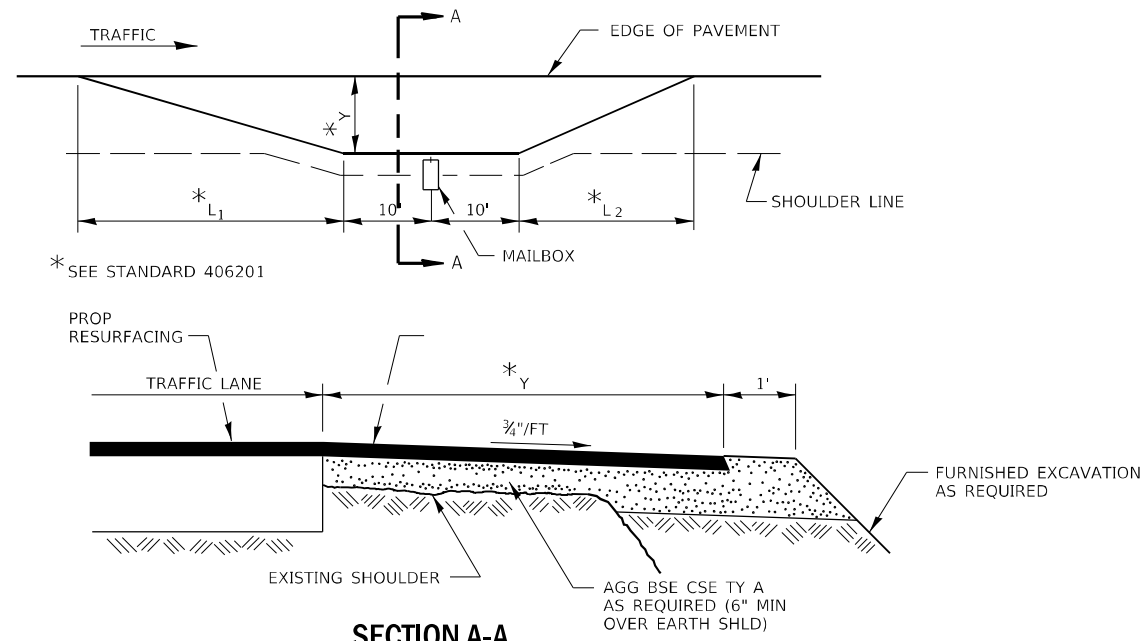
DELINEATORS FOR ROADSIDE HAZARDS SHALL ONLY BE PLACED AT LOCATIONS WHERE THERE IS NO GUARDRAIL, OR OTHER PERMANENT BARRIER, ON THE SAME SIDE OF ROAD AS THE HAZARD.

DELINEATORS FOR ROADSIDE HAZARDS SHALL ONLY BE PLACED AT LOCATIONS WHERE DELINEATORS ARE NOT IN PLACE ALONG THE EDGE OF SHOULDER.

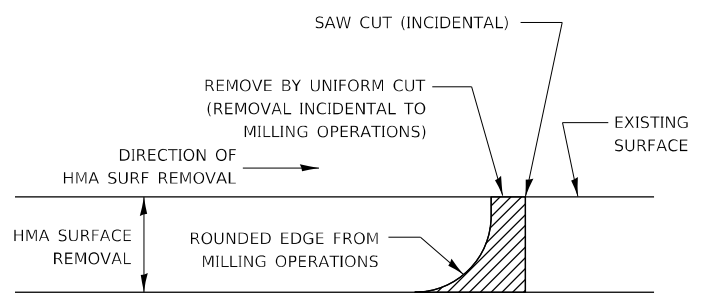
EACH POST SHALL BE CONSIDERED AS ONE DELINEATOR FOR PAYMENT, REGARDLESS OF THE NUMBER OF DELINEATORS ATTACHED TO IT.

FOR ONE-WAY ROADWAYS THE APPLICATION SHALL BE SIMILAR WITH DELINEATORS PLACED ON THE TRAFFIC APPROACH SIDE OF HAZARDS AND OBJECTS. ONLY SINGLE FACE DELINEATORS WILL BE REQUIRED ON ONE-WAY ROADWAYS. CRYSTAL ON RIGHT SIDE, AMBER ON LEFT.

FOR OTHER DELINEATOR APPLICATIONS, REFER TO HIGHWAY STANDARD 635001.

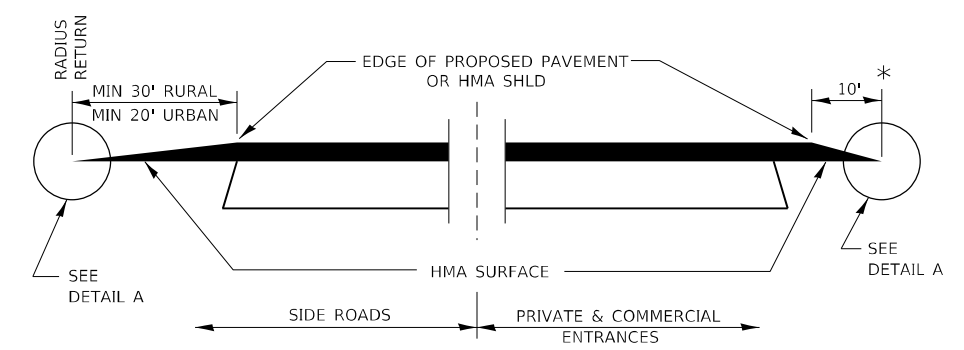


SECTION A-A
MAILBOX TURNOUT DETAILS

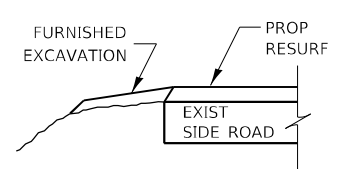


NOTE:
WHEN MILLING OPERATIONS PRODUCE A ROUNDED EDGE, THEN A SAW CUT SHALL BE USED TO MANUFACTURE A PERPENDICULAR EDGE AS SHOWN IN THE DETAIL. THE ENGINEER SHALL BE THE SOLE JUDGE CONCERNING THE USE OF THIS DETAIL.

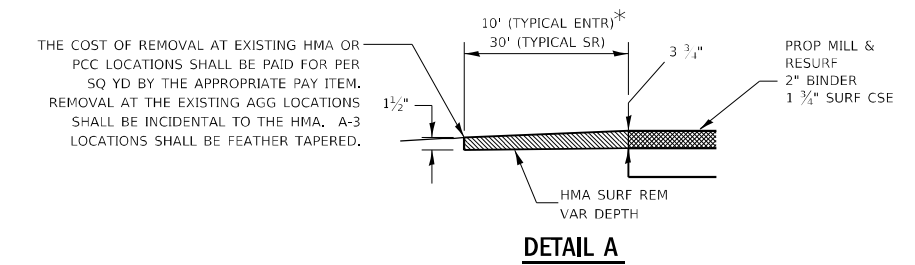
HMA DETAIL AT BUTT JOINTS



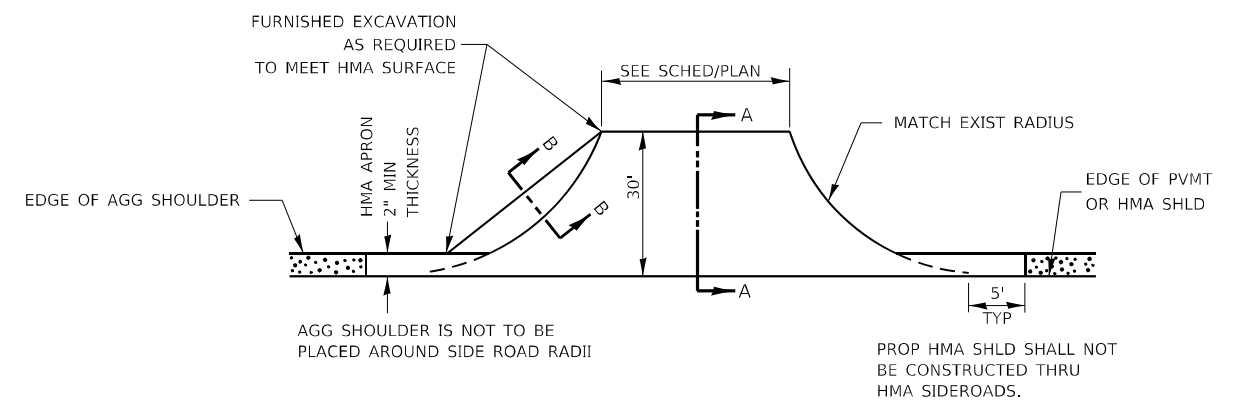
SECTION A-A
DETAILS AT ENTRANCES & SIDE ROADS



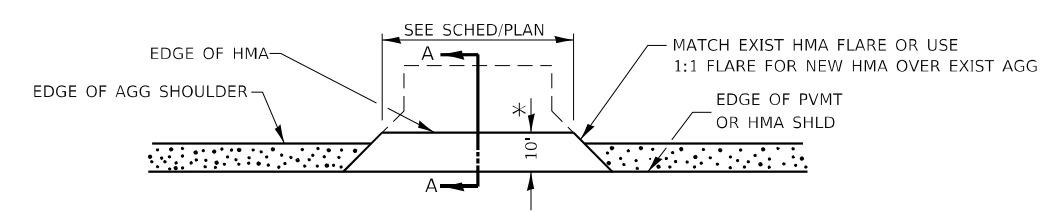
SECTION B-B



DETAIL A



PLAN AT SIDE ROADS

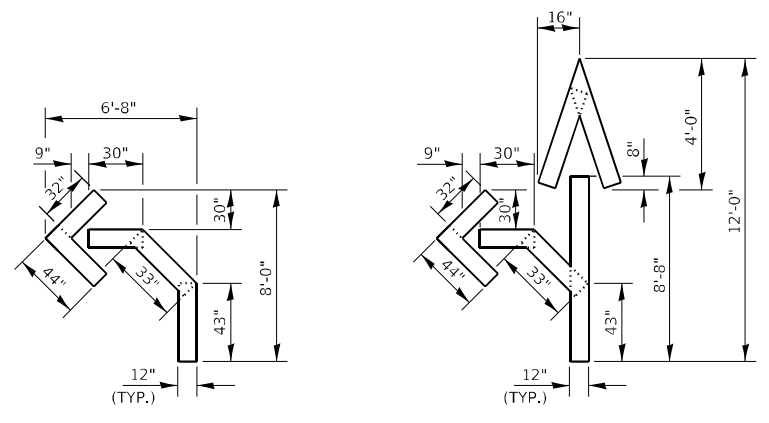


PLAN AT PRIVATE & COMMERCIAL ENTRANCES

(DO NOT RESURFACE FIELD ENTRANCES)

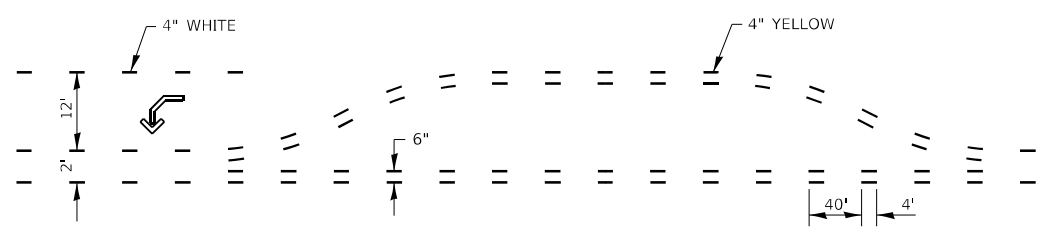
* PROPOSED HMA RESURFACING AT PUBLIC EDUCATIONAL FACILITY ENTRANCES SHALL BE EXTENDED TO THE RIGHT-OF-WAY LIMITS.

FILE NAME =	USER NAME = NOLASCOCJ	DESIGNED -	REVISED -	STATE OF ILLINOIS DEPARTMENT OF TRANSPORTATION	DETAILS	F.A.P. RTE.	SECTION	COUNTY	TOTAL SHEETS	SHEET NO.	
pw\p\enroom.dot\illinois.gov\PWIDOT\Documents\DOT	Office\District 3\Projects\I366D51\CADData\I366D51-eh\Details	DRAWN -	REVISED -			607	(126,127)RS-5	KENDALL	28	26	
Default	PLOT SCALE = 100,0000' / in.	CHECKED -	REVISED -			CONTRACT NO. 66D51					
	PLOT DATE = 3/18/2021	DATE -	REVISED -			SCALE:	SHEET	OF	SHEETS	STA.	TO

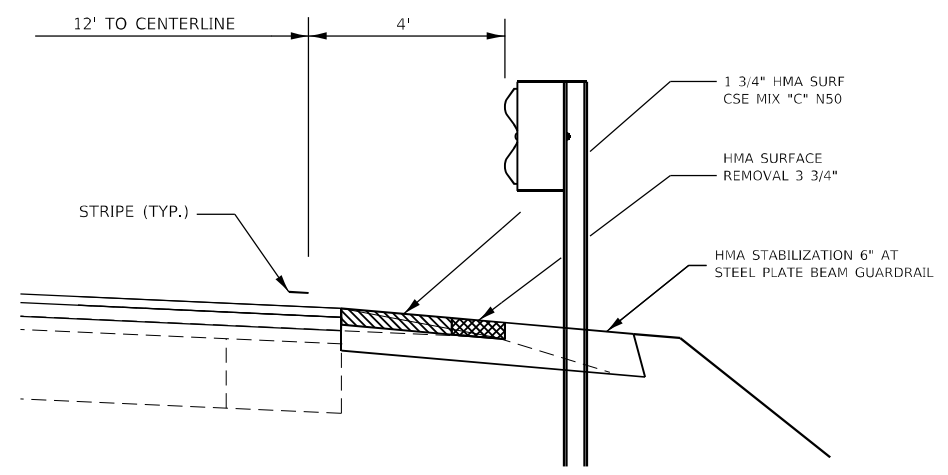


QUANTITY
 12" LINE = 16 LIN FT
 OR 4" LINE = 48 LIN FT

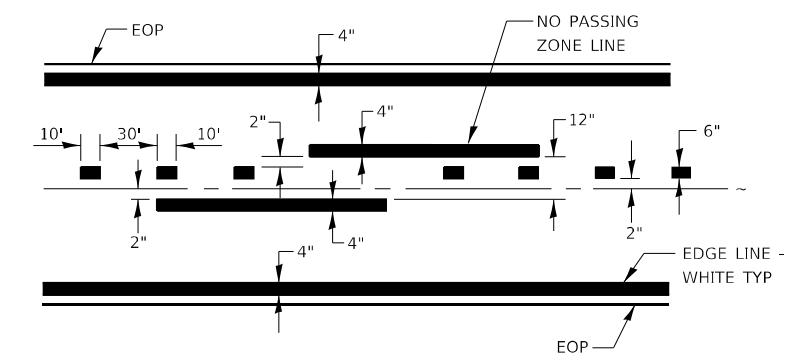
QUANTITY
 12" LINE = 29 LIN FT
 OR 4" LINE = 87 LIN FT



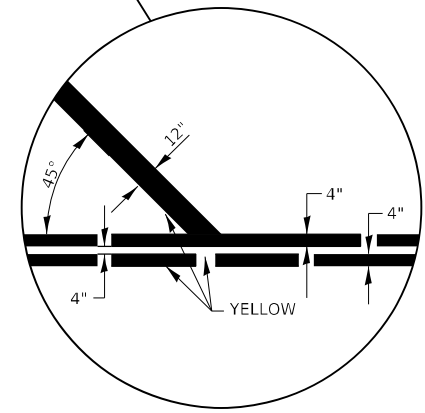
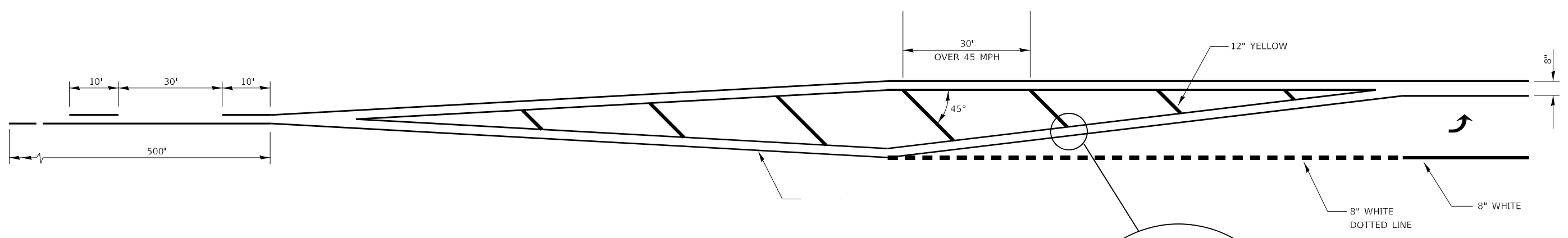
**SHORT-TERM PAVEMENT MARKING
 FOR MEDIANS AND ARROWS**



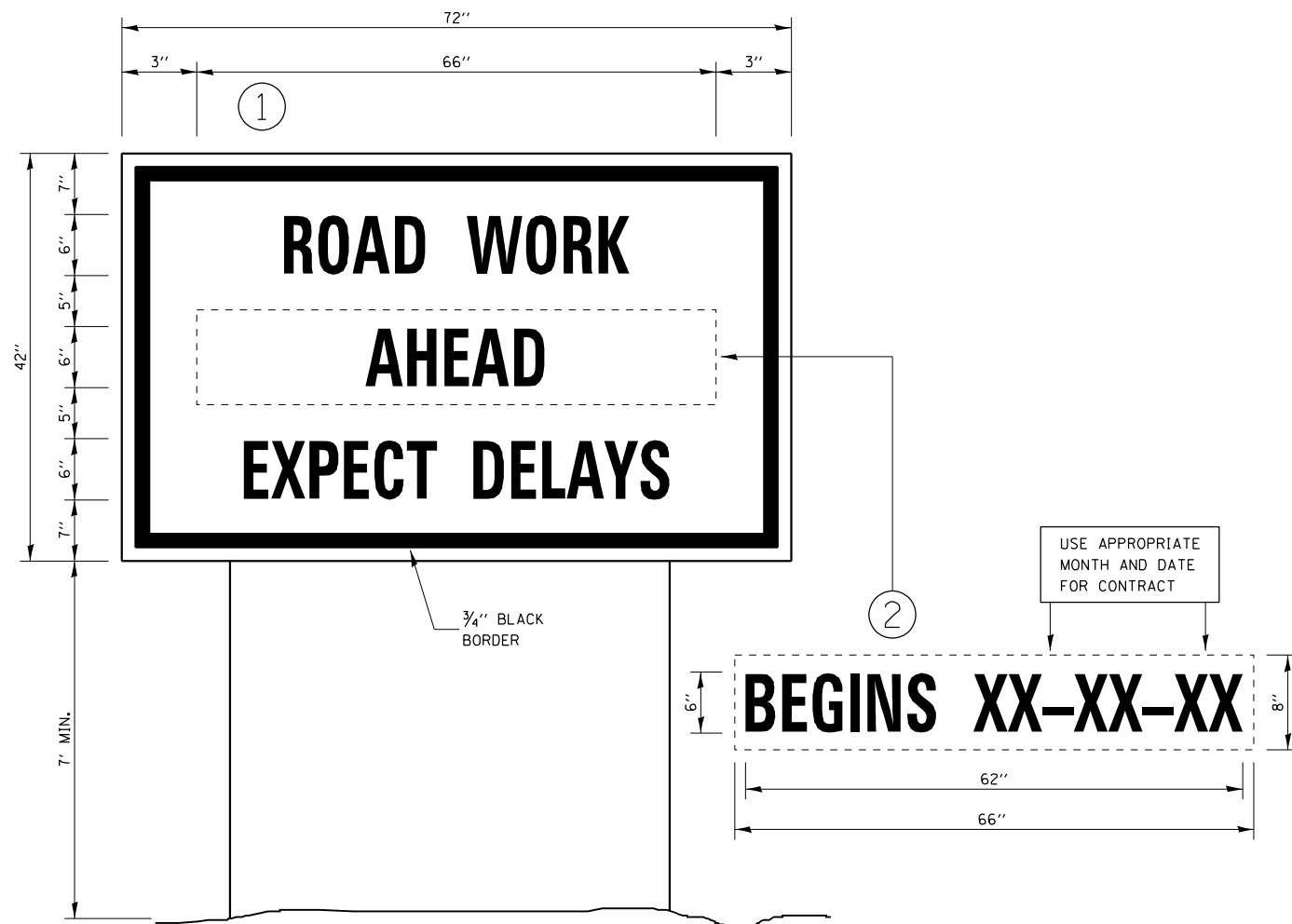
**SHOULDER DETAIL AT
 GUARDRAILS**



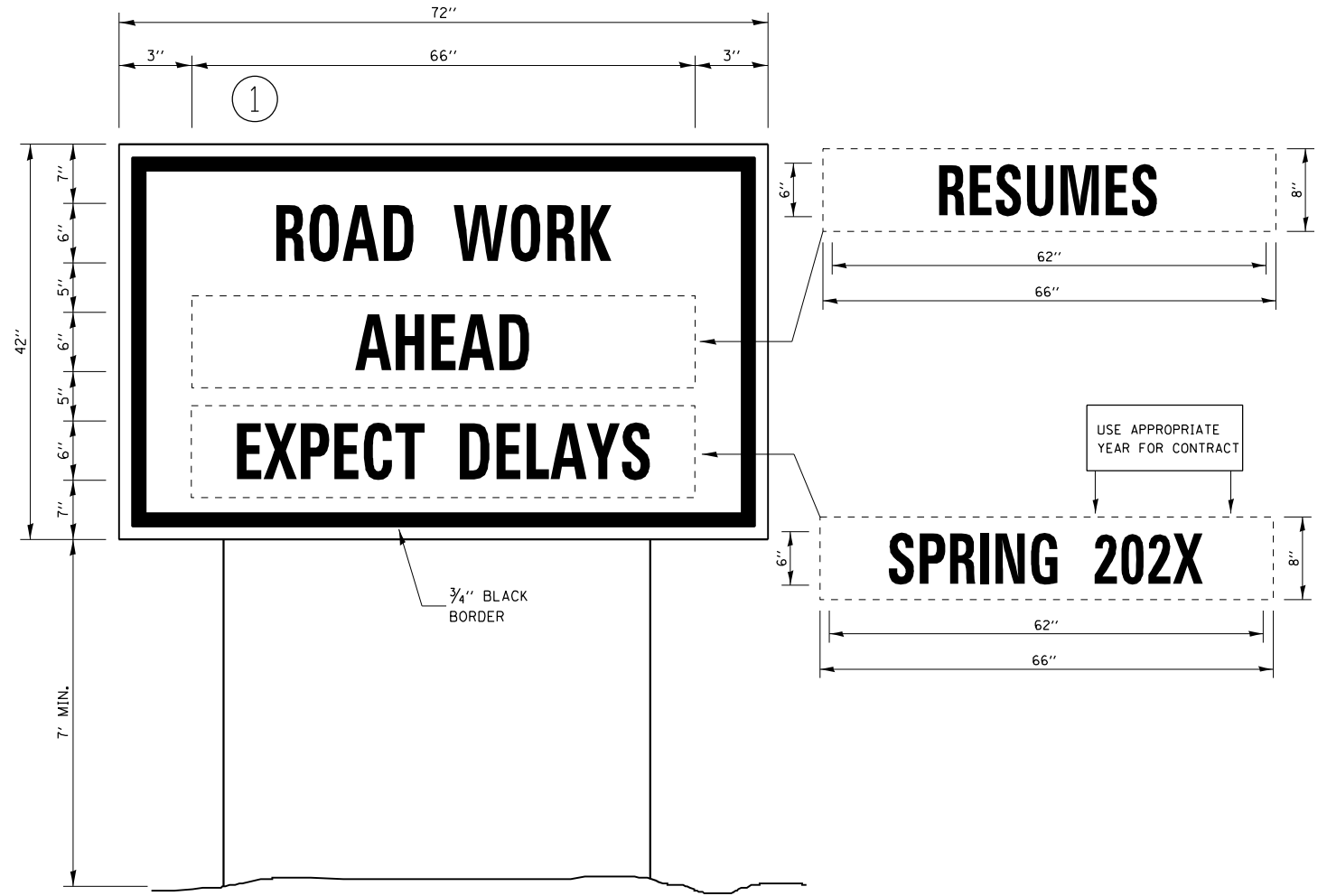
PAVEMENT MARKING



FILE NAME =	USER NAME = NOLASCOCJ	DESIGNED -	REVISED -	STATE OF ILLINOIS DEPARTMENT OF TRANSPORTATION	DETAILS				F.A. RTE.	SECTION	COUNTY	TOTAL SHEETS	SHEET NO.		
pw:\planroom\dot\illinois.gov\PWDOT\Documents\DOT	Offices\District 3\Projects\I366D51\CADData\I366D51-eh\Details	DRAWN -	REVISED -		SCALE:	SHEET	OF	SHEETS	STA.	TO STA.	607	(126,127)RS-5	KENDALL	28	27
Default	PLOT SCALE = 100,0000' / in.	CHECKED -	REVISED -						CONTRACT NO. 66D51						
	PLOT DATE = 3/18/2021	DATE -	REVISED -						ILLINOIS FED. AID PROJECT						



TEMPORARY INFORMATION SIGNING



WINTER SHUT DOWN SIGNING

NOTES:

1. USE 6" D BLACK LETTERING ON FLOURESENT ORANGE BACKGROUND.
2. ERECT SIGNS AT LOCATIONS IN ADVANCE OF THE "ROAD CONSTRUCTION AHEAD" SIGNS AS DIRECTED BY THE ENGINEER.
3. ERECT SIGN ① WITH INSTALLED PANEL ② A MINIMUM OF ONE WEEK PRIOR TO THE START OF THE LANE CLOSURE.
4. REMOVE PANEL ② ON THAT DATE.
5. SEE SPECIAL PROVISION "TEMPORARY INFORMATION SIGNING" FOR ADDITIONAL INFORMATION.
6. WILL BE PAID FOR PER SO FT AS "TEMPORARY INFORMATION SIGNING". EACH SIGN = 21 SO FT AND THE DATE PANEL ② WILL NOT BE MEASURED SEPARATELY FOR PAYMENT.

FILE NAME =	USER NAME = NOLASCOCJ	DESIGNED -	REVISED -	STATE OF ILLINOIS DEPARTMENT OF TRANSPORTATION	DETAILS				F.A. RTE.	SECTION	COUNTY	TOTAL SHEETS	SHEET NO.
pw:\planroom\dot\illinois.gov\PWIDOT\Documents\DOT\Office\District 3\Projects\ID366D51\CADData\ID366D51-ehw\Details	DRAWN -	REVISED -	REVISED -		607	(126,127)RS-5	KENDALL	28	28				
Default	PLOT SCALE = 100,0000' / in.	CHECKED -	REVISED -		CONTRACT NO. 66D51								
	PLOT DATE = 3/18/2021	DATE -	REVISED -		SCALE:	SHEET	OF	SHEETS	STA.	TO STA.	ILLINOIS	FED. AID PROJECT	