

STATE OF ILLINOIS
DEPARTMENT OF TRANSPORTATION

F.A.P. RTE.	SECTION	COUNTY	TOTAL SHEETS	SHEET NO.
607	(129) SFY, Y	KENDALL	9	1
		ILLINOIS	CONTRACT NO. 66L31	

INDEX OF SHEETS

- 1 COVER SHEET
- 2 GENERAL NOTES
- 3 SUMMARY OF QUANTITIES
- 4 TYPICAL SECTIONS
- 5-6 SCHEDULES
- 7-9 DETAILS

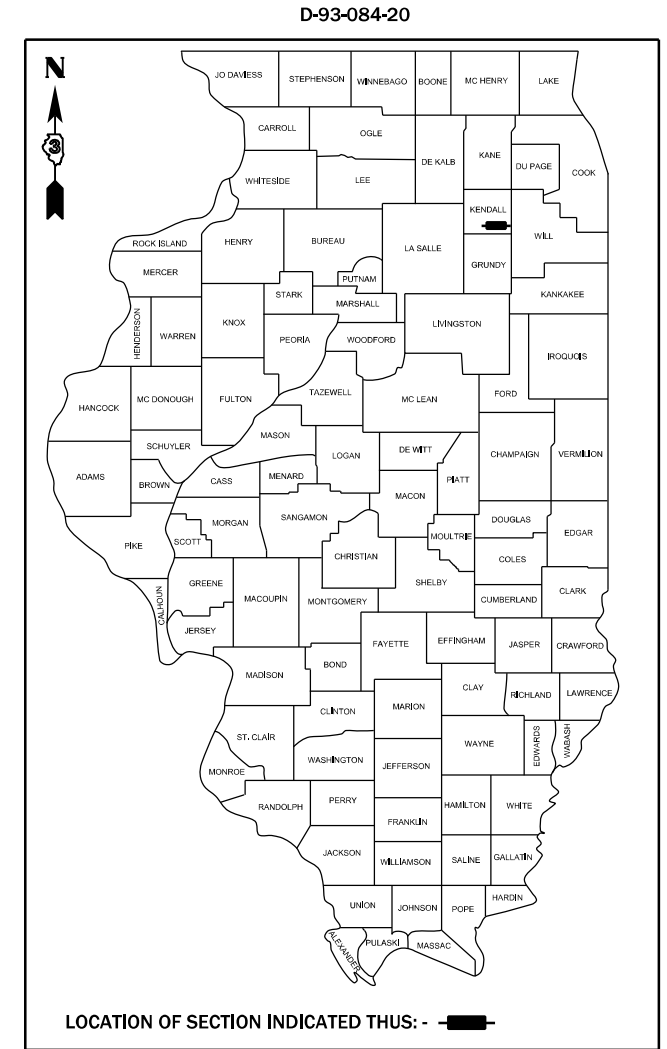
HIGHWAY STANDARDS

- 000001-08 STANDARD SYMBOLS, ABBREVIATIONS AND PATTERNS
- 001006 DECIMAL OF AN INCH AND OF A FOOT
- 406201-01 MAILBOX TURNOUT
- 482001-02 HMA SHOULDER ADJACENT TO FLEXIBLE PAVEMENT
- 482006-03 HMA SHOULDER ADJACENT TO RIGID PAVEMENT
- 642006-01 SHOULDER RUMBLE STRIPS, 8 INCH
- 701006-05 OFF-ROAD OPERATIONS 2L, 2W, 15' (4.5 m) TO 24" (600 mm) FROM PAVEMENT EDGE
- 701311-03 LANE CLOSURE, 2L, 2W, MOVING OPERATIONS - DAY ONLY
- 701326-04 LANE CLOSURE, 2L, 2W, PAVEMENT WIDENING, FOR SPEEDS ≥ 45 MPH
- 701901-08 TRAFFIC CONTROL DEVICES

**PROPOSED
HIGHWAY PLANS**

**FAP ROUTE 607 (US 52)
SECTION (129) SFY, Y
PROJECT: HSIP - RXLF (367)
SHOULDER WIDENING AND RUMBLE STRIPS
KENDALL COUNTY**

C-93-119-20



US 52 - MINOR ARTERIAL
2017 ADT = 3500
P.V. = 76.7% S.U. = 5.4% M.U. = 17.9%

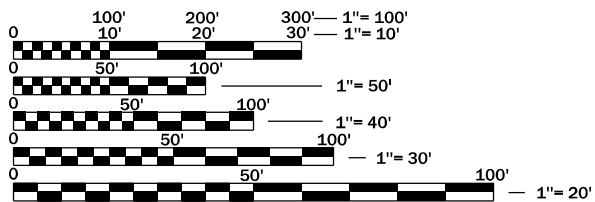
STATE OF ILLINOIS
DEPARTMENT OF TRANSPORTATION

SUBMITTED March 18, 20 21

[Signature]
REGIONAL ENGINEER

May 7, 2021 *[Signature]*
ENGINEER OF DESIGN AND ENVIRONMENT

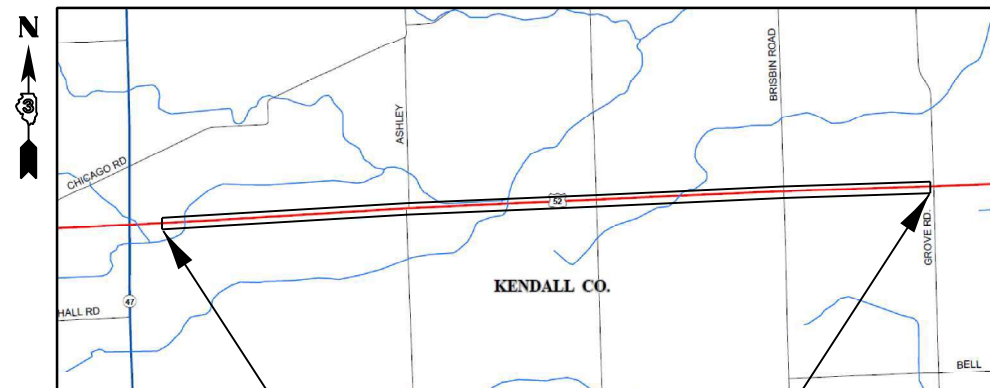
May 7, 2021 *[Signature]*
DIRECTOR OF HIGHWAYS PROJECT IMPLEMENTATION



FULL SIZE PLANS HAVE BEEN PREPARED USING STANDARD ENGINEERING SCALES. REDUCED SIZED PLANS WILL NOT CONFORM TO STANDARD SCALES. IN MAKING MEASUREMENTS ON REDUCED PLANS, THE ABOVE SCALES MAY BE USED.

J.U.L.I.E.
JOINT UTILITY LOCATION INFORMATION FOR EXCAVATION
1-800-892-0123
OR 811

PROJECT ENGINEER: JOE KANNEL, P.E.
UNIT CHIEF: MARC BUDZYNSKI, P.E.
DISTRICT 3 NO. (815) 434-6131
CONTRACT NO. 66L31



PROJECT ENDS
JUST WEST OF GROVE RD
STA 229+32

PROJECT BEGINS
±900' EAST OF IL 47
STA 9+61

GROSS LENGTH = 21,971 FT. = 4.16 MILES
NET LENGTH = 20,781 FT. = 3.94 MILES

**PRINTED BY THE AUTHORITY
OF THE STATE OF ILLINOIS**

GENERAL NOTES

THE HMA SURFACE OF ALL MAILBOX TURNOUTS, PRIVATE ENTRANCES, COMMERCIAL ENTRANCES, AND SIDE ROADS SHALL BE MADE NEATLY, IN A WORKMANLIKE MANNER, AND SHALL ACCURATELY CONFORM TO THE SHAPES AND DIMENSIONS SHOWN ON THE PLAN DETAILS. IF REQUIRED BY THE ENGINEER, THE CONTRACTOR SHALL SAW CUT THE HMA SURFACE TO CONFORM TO THE SHAPES AND DIMENSIONS SHOWN ON THE PLAN DETAILS. THIS WORK WILL BE INCLUDED IN THE COST OF THE HMA SURFACE.

ABANDONED UNDERGROUND UTILITIES THAT CONFLICT WITH CONSTRUCTION SHALL BE DISPOSED OF OUTSIDE THE LIMITS OF THE RIGHT OF WAY ACCORDING TO ARTICLE 202.03 OF THE STANDARD SPECIFICATIONS AND AS DIRECTED BY THE ENGINEER. THIS WORK WILL NOT BE PAID FOR SEPARATELY, BUT WILL BE INCLUDED IN THE COST OF EARTH EXCAVATION.

THE FOLLOWING RATES OF APPLICATION HAVE BEEN USED IN CALCULATING PLAN QUANTITIES:

GRANULAR MATERIALS	2.05	TONS / CU YD
HMA RESURFACING	112	LBS / SQ YD / IN

ALL DAMAGE TO DEPARTMENT OWNED UNDERGROUND FACILITIES, CAUSED BY THE CONTRACTOR SHALL BE REPAIRED TO THE SATISFACTION OF THE DEPARTMENT AT THE CONTRACTOR'S EXPENSE. THIS SHALL INCLUDE ALL TEMPORARY REPAIRS REQUIRED TO KEEP THE FACILITY OPERATIONAL WHILE MATERIAL IS BEING OBTAINED TO MAKE PERMANENT REPAIRS. SPLICING OF ELECTRIC CABLE WILL NOT BE ALLOWED. ELECTRIC CABLE SHALL BE REPLACED FROM POLE TO POLE OR CONTROLLER.

THE CONTRACTOR SHALL CONTACT JULIE AT LEAST 48 HOURS PRIOR TO EXCAVATION TO DETERMINE WHICH UTILITIES ARE IN THE AREA.

HMA MIXTURE REQUIREMENT TABLE		
LOCATION(S) :	ENTIRE PROJECT	ENTIRE PROJECT
MIXTURE USE(S) :	SHOULDER BOTTOM LIFT(S)	SHOULDER TOP LIFT (2")
BINDER GRADE (PG) :	PG 64-22	PG 64-22
DESIGN AIR VOIDS :	4.0% @ N50	4.0% @ N50
MIXTURE COMPOSITION : (MIXTURE GRADATION)	IL-19.0	IL-9.5 FG
FRICTION AGGREGATE :	-	-
MIXTURE WEIGHT :	112.0 LB/SY/IN	112.0 LB/SY/IN
QUALITY MANAGEMENT PROGRAM :	QC/QA	QC/QA
SUBLOT SIZE :	N/A	N/A
DENSITY TEST METHOD :	CORES/NUCLEAR	CORES/NUCLEAR

STATE OF ILLINOIS
DEPARTMENT OF TRANSPORTATION
DISTRICT THREE
AS BUILT INFORMATION

SUPERVISING CONSTRUCTION FIELD ENGINEER

RESIDENT ENGINEER / TECHNICIAN

START & END DATES
OF CONSTRUCTION:

INSPECTORS:

STATE OF ILLINOIS
DEPARTMENT OF TRANSPORTATION
DISTRICT THREE

PREPARED BY: _____
DISTRICT STUDIES & PLANS ENGINEER

DATE: _____

EXAMINED BY: _____
DISTRICT CONSTRUCTION ENGINEER

DISTRICT MATERIALS ENGINEER

DISTRICT OPERATIONS ENGINEER

STATE OF ILLINOIS
DEPARTMENT OF TRANSPORTATION

GENERAL NOTES

SCALE: SHEET OF SHEETS STA. TO STA.

F.A.P. RTE.	SECTION	COUNTY	TOTAL SHEETS	SHEET NO.
607	(129) SFY, Y	KENDALL	9	2
ILLINOIS FED. AID PROJECT			CONTRACT NO. 66L31	

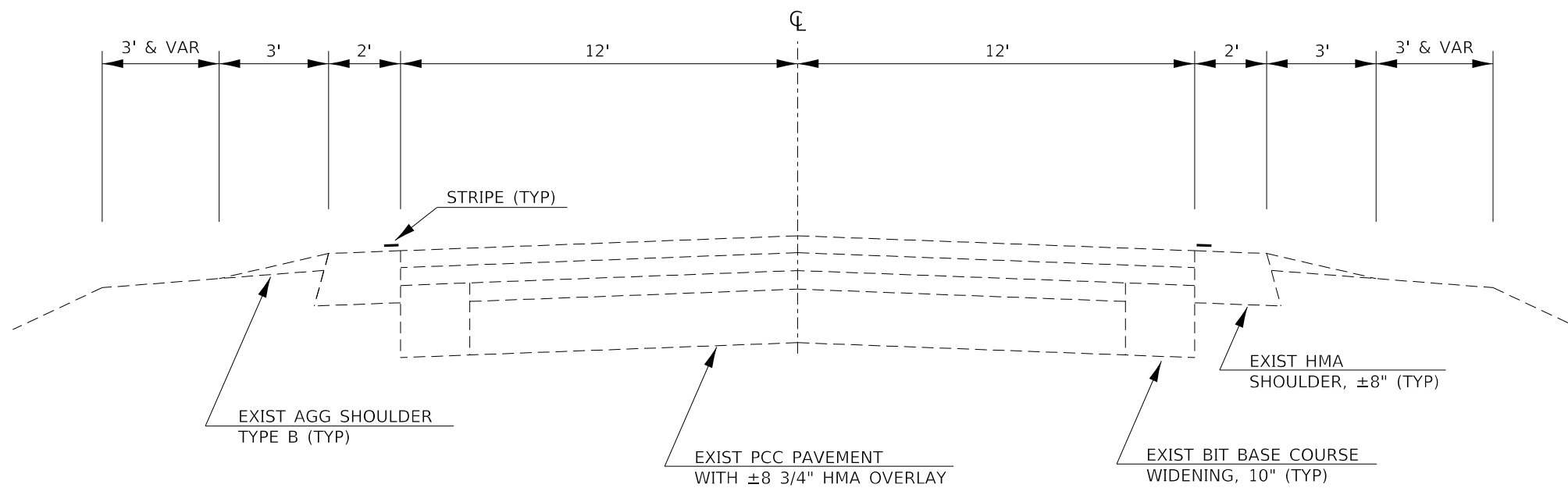
MODEL: \\MODELS\MARIES
FILE: \\MARIES_CADD\work\66L31\budz\miskim\07032467\0366L31-eh-cover.dgn

CODE NO.	ITEM	UNIT	TOTAL QUANTITY	CONSTR. CODE	
				90% FED 10% STATE	
				SAFETY	RURAL
				0021	
40600290	BITUMINOUS MATERIALS (TACK COAT)	POUND	8261		8261
40800050	INCIDENTAL HOT-MIX ASPHALT SURFACING	TON	3.6		3.6
44000157	HOT-MIX ASPHALT SURFACE REMOVAL, 2"	SQ YD	30.2		30.2
48102100	AGGREGATE WEDGE SHOULDER, TYPE B	TON	529		529
48203029	HOT-MIX ASPHALT SHOULDERS, 8"	SQ YD	18318		18318
64200108	SHOULDER RUMBLE STRIPS, 8 INCH	FOOT	41197		41197
67100100	MOBILIZATION	L SUM	1.0		1.0
70100500	TRAFFIC CONTROL AND PROTECTION, STANDARD 701326	L SUM	1.0		1.0
70103815	TRAFFIC CONTROL SURVEILLANCE	CAL DA	5		5
* 78001110	PAINT PAVEMENT MARKING - LINE 4"	FOOT	87388		87388
X0800001	SHOULDER REMOVAL (SPECIAL)	SQ YD	18318		18318
Z0030850	TEMPORARY INFORMATION SIGNING	SQ FT	42		42

*= SPECIALTY ITEM

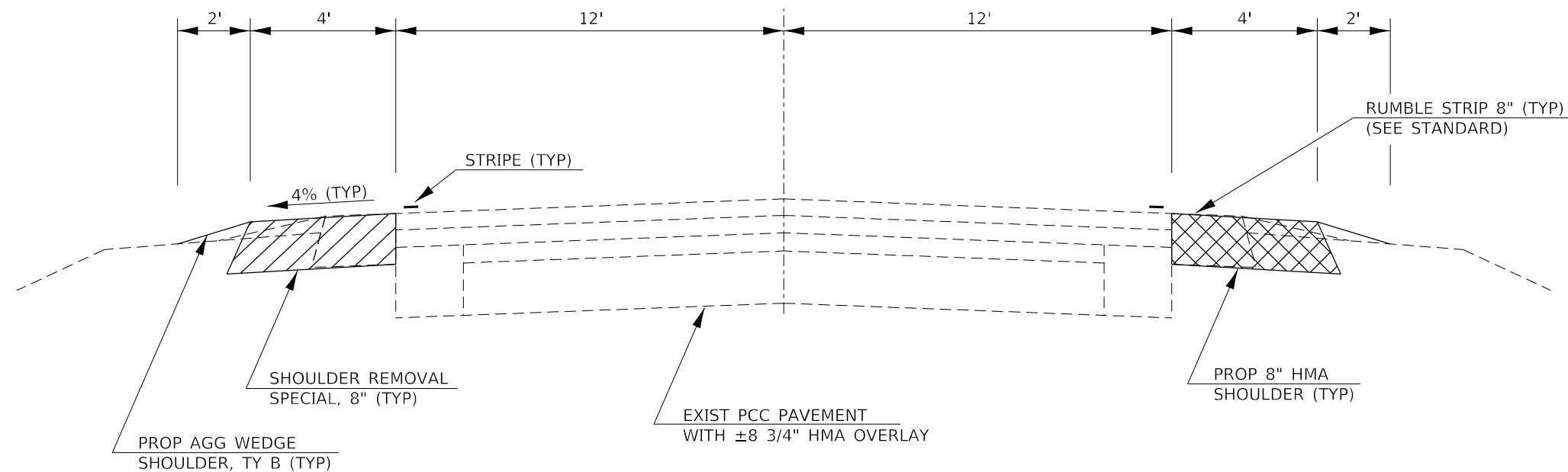
MODEL: \\MODELM\JM\MS
 FILE: \\MODELM\JM\MS\work\sidejob\budzynskim\0702467\0366L31-1H-cover.dgn

USER NAME = budzynskim	DESIGNED -	REVISED -	STATE OF ILLINOIS DEPARTMENT OF TRANSPORTATION	SUMMARY OF QUANTITIES			F.A.P. RTE.	SECTION	COUNTY	TOTAL SHEETS	SHEET NO.
DRAWN -	REVISIED -	607					(129) SFY, Y	KENDALL	9	3	
PLOT SCALE = 100.0000' / in.	CHECKED -	REVISED -		SCALE: SHEET OF SHEETS STA. TO STA.			CONTRACT NO. 66L31				
PLOT DATE = 3/18/2021	DATE -	REVISED -		ILLINOIS FED. AID PROJECT							



EXISTING TYPICAL SECTION

STA 9+61 TO STA 229+32



PROPOSED TYPICAL SECTION

STA 9+61 TO STA 229+32

MODEL: \\MODELS\MAR18
 FILE: \\MAR18_CADD\work\66L31\66L31-sh-covr.dgn

USER NAME = budzynskim	DESIGNED -	REVISED -
	DRAWN -	REVISED -
PLOT SCALE = 100.0000' / in.	CHECKED -	REVISED -
PLOT DATE = 3/18/2021	DATE -	REVISED -

**STATE OF ILLINOIS
DEPARTMENT OF TRANSPORTATION**

TYPICAL SECTIONS				
SCALE:	SHEET	OF	SHEETS	STA. TO STA.

F.A.P. RTE.	SECTION	COUNTY	TOTAL SHEETS	SHEET NO.
607	(129) SFY, Y	KENDALL	9	4
CONTRACT NO. 66L31				
ILLINOIS FED. AID PROJECT				

SHOULDER REMOVAL & REPLACEMENT SCHEDULE										
LOCATION		SIDE	LENGTH	SHOULDER REMOVAL (SPECIAL)	HMA SHOULDERS 8"	AGG WEDGE SHOULDER, TYPE B, 2'	BIT MTL S TACK COAT	SHOULDER RUMBLE STRIPS, 8"	*PAINT PVMT MARKING WHITE 4"	
STA	TO STA	LT / RT	FOOT	SQ YD	SQ YD	TON	POUND	FOOT	FOOT	
9+61	TO 14+10	LT & RT	449	400	400	12	180	898	1796	
14+10	TO 14+97	LT	87	39	39	2	18	87	348	
STRUCTURE OMISSION										
SN 047-2005 = STA 16+36									1108	
17+74	TO 18+56	RT	82	37	37	2	17	82	328	
18+56	TO 78+63	LT & RT	6007	5340	5340	153	2403	12014	24028	
ASHLEY RD = STA 79+00 RT										
78+63	TO 79+31	LT	68	31	31	1	14	68	272	
79+31	TO 80+02	RT	71	32	32	1	15	71	284	
ASHLEY RD = STA 79+75 LT										
80+02	TO 104+66	LT & RT	2464	2191	2191	63	986	4928	9856	
STRUCTURE OMISSION										
SN 047-0016 = STA 108+07									2672	
111+34	TO 133+00	LT & RT	2166	1926	1926	55	867	4332	8664	
CHURCH RD = STA 133+30										
133+64	TO 156+03	LT & RT	2239	1991	1991	57	896	4478	8956	
156+03	TO 156+28	RT	25	12	12	1	5	25	100	
CULVERT OMISSION										
8' x 4' BOX = STA 156+86									484	
157+49	TO 186+60	LT & RT	2911	2588	2588	74	1165	5822	11644	
BRISBIN RD = STA 186+90										
187+20	TO 229+00	LT & RT	4180	3716	3716	107	1672	8360	16720	
229+00	TO 229+32	LT	32	15	15	1	7	32	128	
TOTAL			20781	18318	18318	529	8245	41197	87388	

*QUANTITY REPRESENTS TWO SEPARATE APPLICATIONS

MODEL: M001.MAINTS
FILE: Maints - copy - work\shd\shd\budzynskim\0702467\0366L31-shd-cover.dgn

USER NAME = budzynskim	DESIGNED -	REVISED -	STATE OF ILLINOIS DEPARTMENT OF TRANSPORTATION	SCHEDULES				F.A.P. RTE.	SECTION	COUNTY	TOTAL SHEETS	SHEET NO.
PLOT SCALE = 100.0000' / in.	DRAWN -	REVISED -						607	(129) SFY, Y	KENDALL	9	5
PLOT DATE = 3/18/2021	CHECKED -	REVISED -		SCALE: SHEET OF SHEETS STA. TO STA.				CONTRACT NO. 66L31				
	DATE -	REVISED -		ILLINOIS FED. AID PROJECT								

MAILBOX TURNOUT SCHEDULE			
STA / SIDE	HMA SURF REMOVAL 2"	INCIDENTAL HMA SURF 2"	BIT MTLs TACK COAT
	SQ YD	TON	POUND
27+36 RT	7.2	0.9	4
189+40 LT	7.6	0.9	4
191+90 LT	11.4	1.3	6
217+46 LT	4.0	0.5	2
TOTAL	30.2	3.6	16

THE FIRST 4 FEET OF THE MBTO ADJACENT TO THE TRAVELED WAY IS PAID AS SHOULDER REMOVAL (SPECIAL) AND HMA SHOULDERS 8". THE REMAINING AREA OF THE MBTO IS PAID AS HMA SURFACE REMOVAL 2" AND INCIDENTAL HMA SURFACE 2".

SURVEY MONUMENT TABLE						
MONUMENT NUMBER	DESCRIPTION	APPROXIMATE LOCATION	EXISTING MONUMENT TYPE	PROPOSED MONUMENT TYPE	MONUMENT RECORD TO BE RECORDED	RESPONSIBILITY
A052310	1/4 SECTION LINE S SIDE OF INDIAN BOUNDARY LINE * TIES WILL BE DESTROYED DURING SHOULDER WORK	1 MILE E OF ILL RTE 47	#5 BAR	NO CHANGE*	YES	2
B052310	1/4 SECTION LINE N SIDE OF INDIAN BOUNDARY LINE * TIES WILL BE DESTROYED DURING SHOULDER WORK	1 MILE E OF ILL RTE 47	MISSING	30" #6 REBAR*	YES	2
052312	S QTR CORNER SECTION 14	1/2 MILE E OF ASHLEY ROAD	MISSING	30" #6 REBAR	YES	2
A052313	E QTR CORNER SECTION 14, T35N, R7E, 3RD PM	CHURCH ROAD INTERSECTION	MISSING	SURVEY NAIL	NO	2
A052315	E QTR CORNER SECTION 13, T35N, R7E, 3RD PM	BRISBIN ROAD INTERSECTION	MISSING	SURVEY NAIL	NO	2

UNKNOWN MONUMENTS SET BY OTHERS MAY EXIST. IF FOUND, R.E. WILL DIRECT PLATS AND PLANS TO TO GPS ANY MONUMENT SUBJECT TO DESTRUCTION FROM THE SHOULDER WIDENING FOR THE PURPOSE OF RESETTING IT AFTER JOB COMPLETION. R.E. WILL DIRECT PLATS AND PLANS TO SEARCH FOR ADDITIONAL MONUMENTS IF THE CONSTRUCTION LIMITS ARE INCREASED DURING CONSTRUCTION. WHEN WORK IS COMPLETE, R.E. WILL DIRECT PLATS AND PLANS PERSONNEL TO SET THE LISTED MONUMENTS. PLATS AND PLANS WILL PREPARE AND RECORD THE REQUIRED MONUMENT RECORDS. NOTE: FOR BIDDING PURPOSES, NO CONTRACTED LAND SURVEYING SERVICES WILL BE REQUIRED FOR RESETTING THE LISTED MONUMENT.

RESPONSIBILITY:

- 1) RESIDENT TO RE-ESTABLISH MONUMENT (PAY ITEM REQUIRED. PERMANENT SURVEY MARKER, TYPE 1)
- 2) PLATS AND PLANS TO RE-ESTABLISH MONUMENT

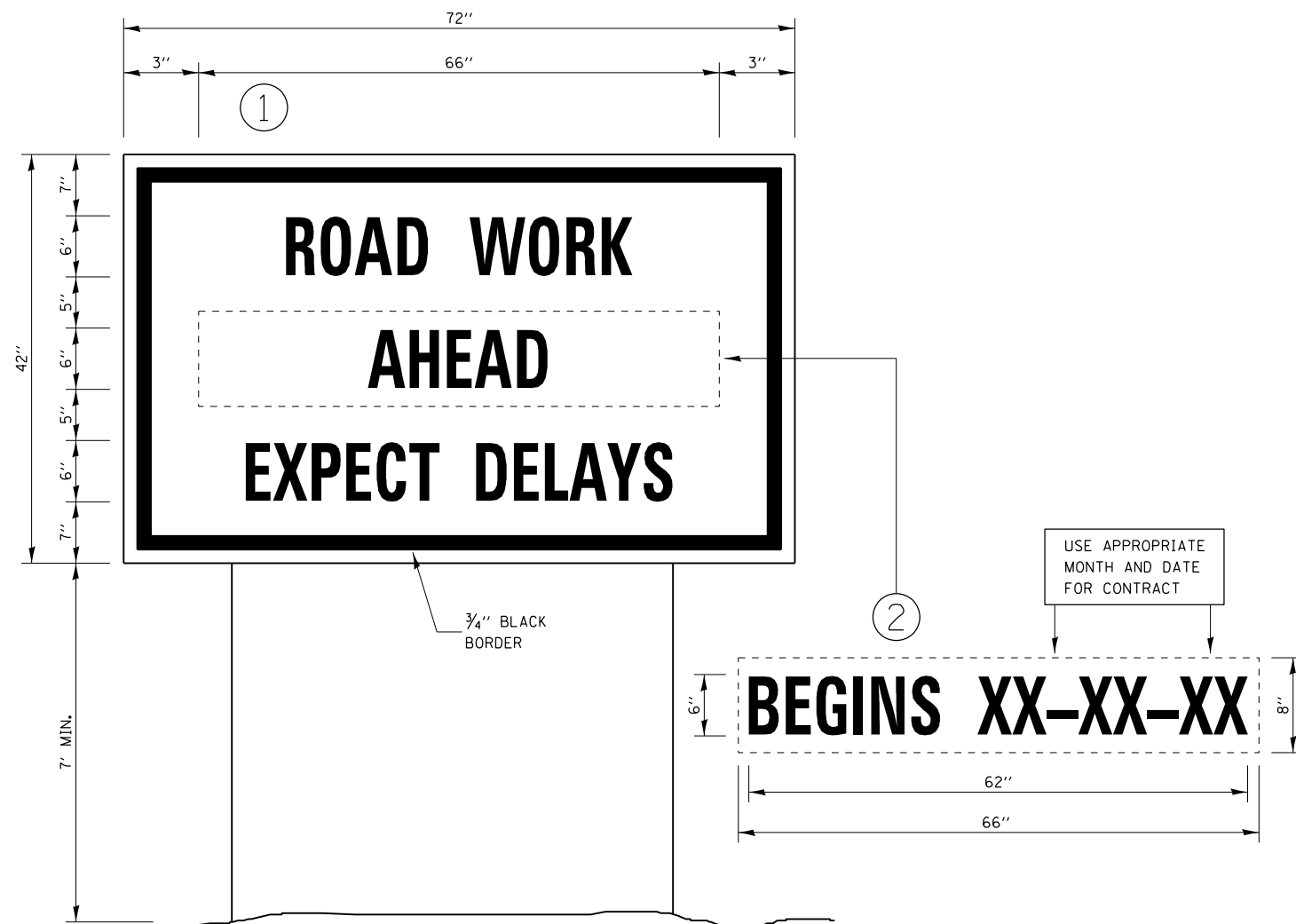
MODEL: \\MODELS\MAR15
FILE: \\MAR15_CADD\work\sidejob\budzynskim\0702467\0366L31-1b-conv.dgn

USER NAME = budzynskim	DESIGNED -	REVISED -
	DRAWN -	REVISED -
PLOT SCALE = 100.0000' / in.	CHECKED -	REVISED -
PLOT DATE = 3/18/2021	DATE -	REVISED -

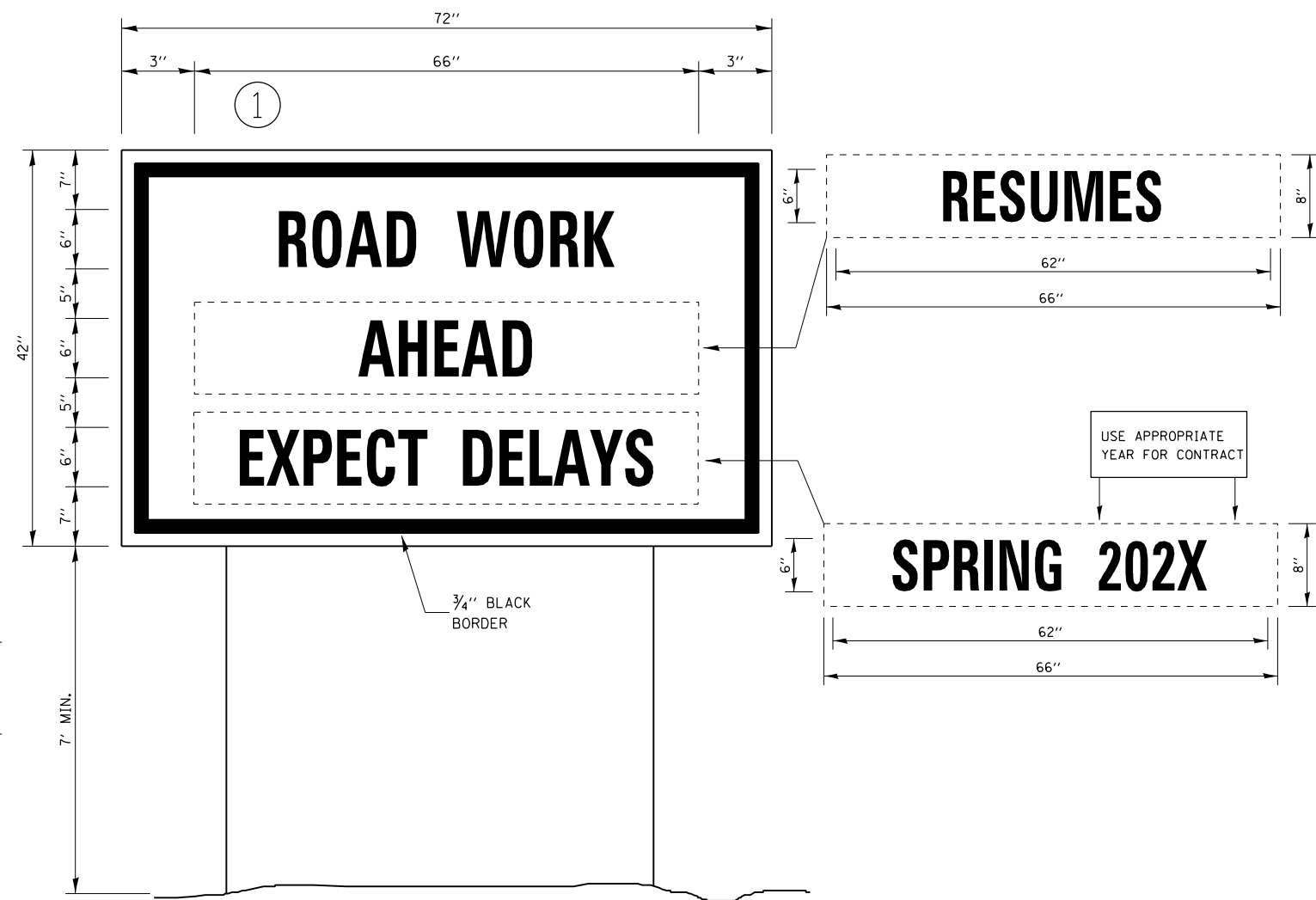
**STATE OF ILLINOIS
DEPARTMENT OF TRANSPORTATION**

SCHEDULES			
SCALE:	SHEET	OF	SHEETS

F.A.P. RTE.	SECTION	COUNTY	TOTAL SHEETS	SHEET NO.
607	(129) SFY, Y	KENDALL	9	6
CONTRACT NO. 66L31				
ILLINOIS FED. AID PROJECT				



TEMPORARY INFORMATION SIGNING



WINTER SHUT DOWN SIGNING

NOTES:

1. USE 6" D BLACK LETTERING ON FLOURESENT ORANGE BACKGROUND.
2. ERECT SIGNS AT LOCATIONS IN ADVANCE OF THE "ROAD CONSTRUCTION AHEAD" SIGNS AS DIRECTED BY THE ENGINEER.
3. ERECT SIGN ① WITH INSTALLED PANEL ② A MINIMUM OF ONE WEEK PRIOR TO THE START OF THE LANE CLOSURE.
4. REMOVE PANEL ② ON THAT DATE.
5. SEE SPECIAL PROVISION "TEMPORARY INFORMATION SIGNING" FOR ADDITIONAL INFORMATION.
6. WILL BE PAID FOR PER SQ FT AS "TEMPORARY INFORMATION SIGNING". EACH SIGN = 21 SQ FT AND THE DATE PANEL ② WILL NOT BE MEASURED SEPARATELY FOR PAYMENT.

MODEL NAME: MODEL NAME
FILE NAME: sign_worksheet1budzynskim07024670366L31-1h-cover.dgn

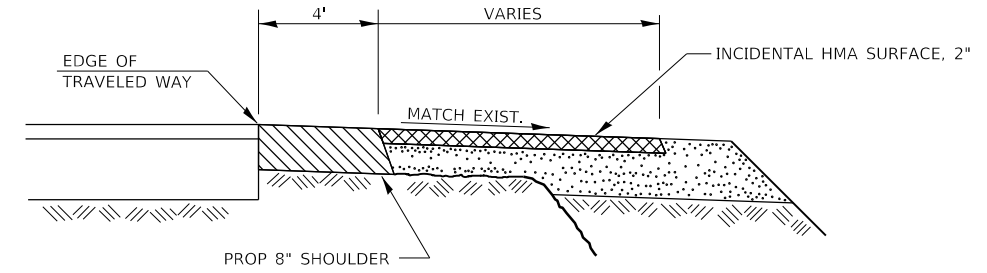
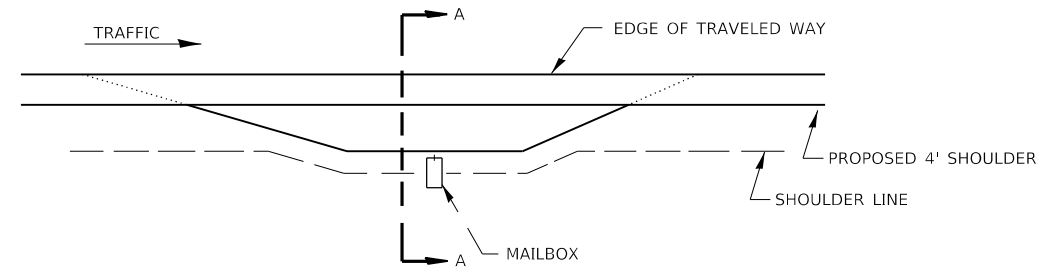
USER NAME = budzynskim	DESIGNED -	REVISED -
	DRAWN -	REVISED -
PLOT SCALE = 100.0000' / in.	CHECKED -	REVISED -
PLOT DATE = 3/18/2021	DATE -	REVISED -

**STATE OF ILLINOIS
DEPARTMENT OF TRANSPORTATION**

DETAILS

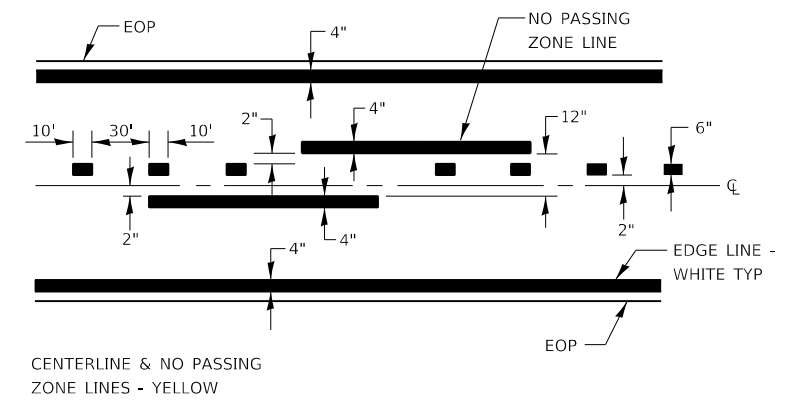
SCALE: SHEET OF SHEETS STA. TO STA.

F.A.P. RTE.	SECTION	COUNTY	TOTAL SHEETS	SHEET NO.
607	(129) SFY, Y	KENDALL	9	7
			CONTRACT NO. 66L31	
ILLINOIS FED. AID PROJECT				



SECTION A-A

RURAL MAILBOX TURNOUT DETAILS



CENTERLINE & NO PASSING ZONE LINES - YELLOW

PAVEMENT MARKING

MODEL: 4\MODEL\MAR15
FILE: Mar15_03.dwg; author: budzynskim; 07/03/2021 09:31:41; ch: cover.dgn

USER NAME = budzynskim	DESIGNED -	REVISED -
	DRAWN -	REVISED -
PLOT SCALE = 100.0000' / in.	CHECKED -	REVISED -
PLOT DATE = 3/18/2021	DATE -	REVISED -

**STATE OF ILLINOIS
DEPARTMENT OF TRANSPORTATION**

DETAILS			
SCALE:	SHEET	OF	SHEETS
	STA.	TO	STA.

F.A.P. RTE.	SECTION	COUNTY	TOTAL SHEETS	SHEET NO.
607	(129) SFY, Y	KENDALL	9	8
CONTRACT NO. 66L31				
ILLINOIS FED. AID PROJECT				

