

STATE OF ILLINOIS
DEPARTMENT OF TRANSPORTATION

F.A.I. RTE.	SECTION	COUNTY	TOTAL SHEETS	SHEET NO.
55	(53-1, 32-3)PP	LIVINGSTON & GRUNDY	11	1
		ILLINOIS	CONTRACT NO. 66L76	

INDEX OF SHEETS

1. COVER SHEET
2. GENERAL NOTES
3. SUMMARY OF QUANTITIES
4. TYPICAL SECTIONS
- 5 - 7. SCHEDULES
8. TRAFFIC CONTROL AND PROTECTION, STANDARD 701400
- 9 - 10. CLASS A PATCHING DETAILS
11. PAVEMENT MARKING

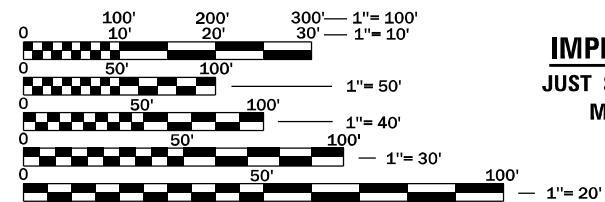
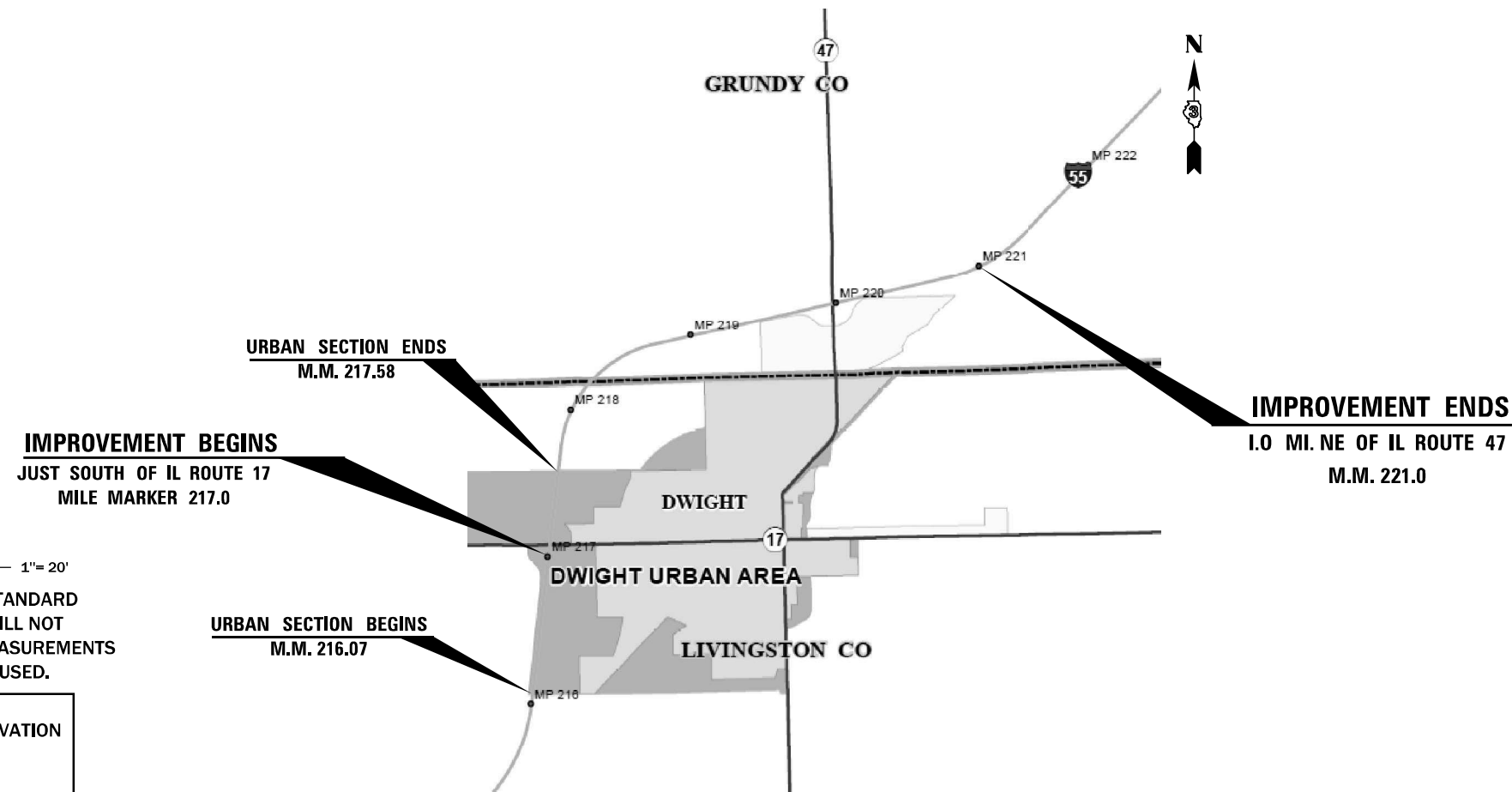
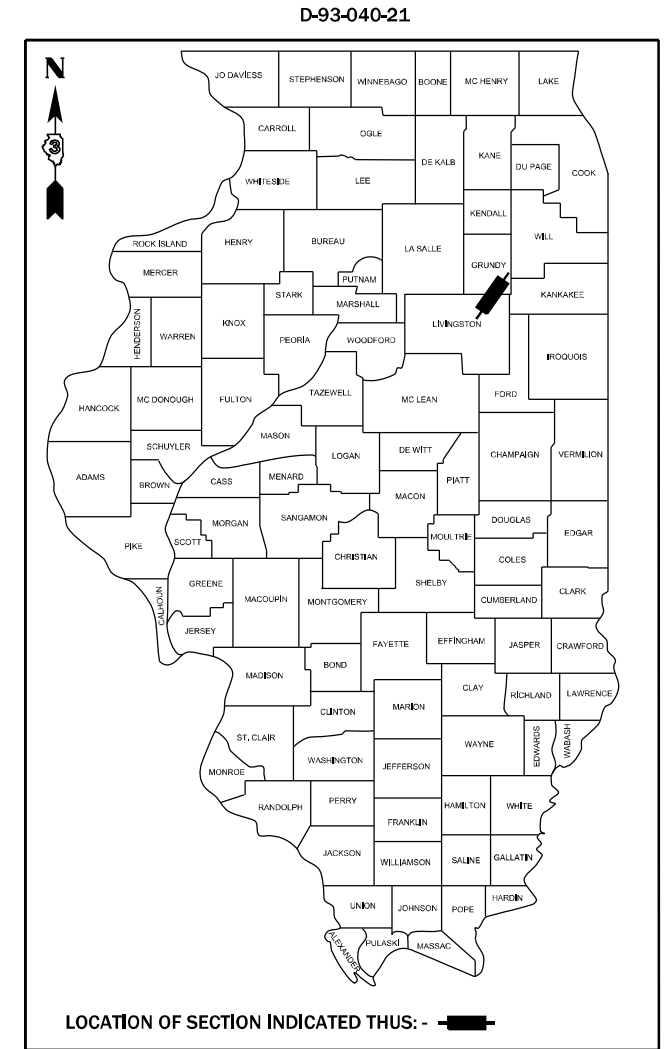
STANDARDS

- | | |
|-----------|--|
| 000001-08 | STANDARD SYMBOLS, ABBREVIATIONS AND PATTERNS |
| 001001-02 | AREAS OF REINFORCEMENT BARS |
| 001006 | DECIMAL OF AN INCH AND OF A FOOT |
| 701101-05 | OFF-ROAD OPERATIONS, MULTILANE, 15' (4.5 m) TO 24" (600 mm) FROM PAVEMENT EDGE |
| 701106-02 | OFF-ROAD OPERATIONS, MULTILANE, MORE THAN 15' (4.5 m) AWAY |
| 701401-12 | LANE CLOSURE, FREEWAY/EXPRESSWAY |
| 701411-09 | LANE CLOSURE, MULTILANE, AT ENTRANCE OR EXIT RAMP FOR SPEEDS ≥ 45 MPH |
| 701426-09 | LANE CLOSURE, MULTILANE INTERMITTENT OR MOVING OPERATION, FOR SPEEDS ≥ 45 MPH |
| 701428-01 | TRAFFIC CONTROL, SETUP AND REMOVAL, FREEWAY/EXPRESSWAY |
| 701901-08 | TRAFFIC CONTROL DEVICES |
| 420001-09 | PAVEMENT JOINTS |
| 442001-04 | CLASS A PATCHES |
| 780001-05 | TYPICAL PAVEMENT MARKINGS |

**PROPOSED
HIGHWAY PLANS**

F.A.I. ROUTE 55 (I-55)
SECTION (53-1,32-3)PP
CLASS A PATCHING
LIVINGSTON AND GRUNDY

C-93-075-21



FULL SIZE PLANS HAVE BEEN PREPARED USING STANDARD ENGINEERING SCALES. REDUCED SIZED PLANS WILL NOT CONFORM TO STANDARD SCALES. IN MAKING MEASUREMENTS ON REDUCED PLANS, THE ABOVE SCALES MAY BE USED.

J.U.L.I.E.
JOINT UTILITY LOCATION INFORMATION FOR EXCAVATION
1-800-892-0123
OR 811

PROJECT ENGINEER: JOE KANNEL P.E.
UNIT CHIEF: RON WOODSHANK
DISTRICT 3 NO. (815) 434-6131
CONTRACT NO. 66L76

GROSS LENGTH = 21120.0 FT. = 4.0 MILE
NET LENGTH = 982.0 x FT. = 0.19 MILE

FUNCTIONAL CLASSIFICATION
URBAN/RURAL
INTERSTATE
F.A.I. ROUTE 55 (I-55)
2019 ADT = 24800
P.V. 69.7% S.U. 3.7% M.U. 26.6%

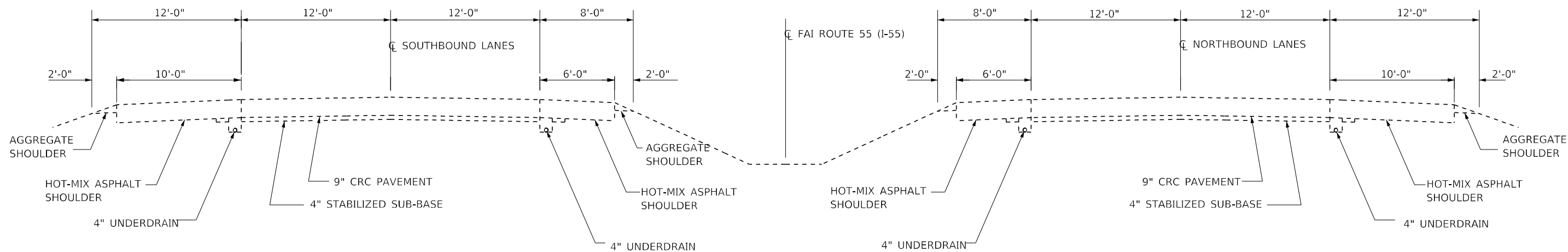
STATE OF ILLINOIS
DEPARTMENT OF TRANSPORTATION

SUBMITTED 3/23 20 21
Masood Ahmad REGIONAL ENGINEER

May 7, 2021 [Signature]
ENGINEER OF DESIGN AND ENVIRONMENT

May 7, 2021 [Signature]
DIRECTOR OF HIGHWAYS PROJECT IMPLEMENTATION

**PRINTED BY THE AUTHORITY
OF THE STATE OF ILLINOIS**



**TYPICAL SECTION
MAINLINE**

M.M. 217.0 TO M.M. 221.0

MODEL: Default
FILE NAME: p:\pub\lhammon.dwt\illinois.gov\PIWDOT\Documents\DOT_Offices\District 3\Projects\0366L76\CADD\0366L76-PLANS.dgn

USER NAME = WOODSHANKRL	DESIGNED -	REVISED -
	DRAWN -	REVISED -
PLOT SCALE = 100,0000' / in.	CHECKED -	REVISED -
PLOT DATE = 2/24/2021	DATE -	REVISED -

**STATE OF ILLINOIS
DEPARTMENT OF TRANSPORTATION**

TYPICAL SECTIONS

SCALE: SHEET 1 OF 1 SHEETS STA. TO STA.

F.A.I. RTE.	SECTION	COUNTY	TOTAL SHEETS	SHEET NO.
55	(53-1, 32-3)PP	LIVINGSTON & GRUNDY	11	4
CONTRACT NO. 66L76				
ILLINOIS FED. AID PROJECT				

PATCHING SCHEDULE - LIVINGSTON COUNTY
URBAN - NORTHBOUND LANES

LOCATION	PASSING LANE							DRIVING LANE						
	PATCH LENGTH	CLASS A PATCHING			PATCHING REINFORCEMENT	SAW CUTS	TIE BARS	PATCH LENGTH	CLASS A PATCHING			PATCHING REINFORCEMENT	SAW CUTS	TIE BARS
		II 9"	III 9"	IV 9"					II 9"	III 9"	IV 9"			
MILE MARKER	FEET	SQ YD	SQ YD	SQ YD	SQ YD	FOOT	EACH	FEET	SQ YD	SQ YD	SQ YD	SQ YD	FOOT	EACH
217.0								6	8			8	36	44
217.0								20			27		64	50
217.0								6	8			8	36	44
217.1								10	13			13	44	44
217.2	6	8			8	36	44							
217.2	6	8			8	36	44							
217.2								6	8			8	36	44
217.4								6	8			8	36	44
217.4	6	8			8	36	44							
217.4								20			27	27	64	50
217.4								25			33	33	74	52
217.4								25			33	33	74	52
NBL SUBTOTAL	18	24			24	108	132	124	45		120	165	464	424
NBL TOTAL	142	69		120	189	572	556							

PATCHING SCHEDULE - LIVINGSTON COUNTY
RURAL - SOUTHBOUND LANES

LOCATION	PASSING LANE							DRIVING LANE						
	PATCH LENGTH	CLASS A PATCHING			PATCHING REINFORCEMENT	SAW CUTS	TIE BARS	PATCH LENGTH	CLASS A PATCHING			PATCHING REINFORCEMENT	SAW CUTS	TIE BARS
		II 9"	III 9"	IV 9"					II 9"	III 9"	IV 9"			
MILE MARKER	FEET	SQ YD	SQ YD	SQ YD	SQ YD	FOOT	EACH	FEET	SQ YD	SQ YD	SQ YD	SQ YD	FOOT	EACH
218.0							44	15		20		20	54	44
217.9	6	8			8	36	44							44
217.9							44							44
217.8	8	11			11	40	44	8	11			11	40	44
217.8							44	10	13			13	44	44
217.7	6	8			8	36	44							44
SBL SUBTOTAL	20	27			27	112	264	33	24	20		44	138	264
SBL TOTAL	53	51	20		71	250	528							

MODEL: Default
FILE NAME: p:\pub\lansroom\dot\illinois.gov\PIWDOT\Documents\DOT_Offices\District_3\Projects\0366L76\CADD\0366L76-PLAN5.dgn

USER NAME = WOODSHANKRL	DESIGNED -	REVISED -
	DRAWN -	REVISED -
PLOT SCALE = 100,0000' / in.	CHECKED -	REVISED -
PLOT DATE = 2/24/2021	DATE -	REVISED -

**STATE OF ILLINOIS
DEPARTMENT OF TRANSPORTATION**

**SCHEDULES
LIVINGSTON COUNTY**

SCALE: SHEET 1 OF 3 SHEETS STA. TO STA.

F.A.I. RTE.	SECTION	COUNTY	TOTAL SHEETS	SHEET NO.
55	(53-1, 32-3)PP	LIVINGSTON & GRUNDY	11	5
CONTRACT NO. 66L76				
ILLINOIS FED. AID PROJECT				

PATCHING SCHEDULE - GRUNDY COUNTY
RURAL - SOUTHBOUND LANES

LOCATION	PASSING LANE							DRIVING LANE						
	PATCH LENGTH	CLASS A PATCHING			PATCHING REINFORCEMENT	SAW CUTS	TIE BARS	PATCH LENGTH	CLASS A PATCHING			PATCHING REINFORCEMENT	SAW CUTS	TIE BARS
		TYPE II 9"	TYPE III 9"	TYPE IV 9"					TYPE II 9"	TYPE III 9"	TYPE IV 9"			
MILE MARKER	FEET	SQ YD	SQ YD	SQ YD	SQ YD	FOOT	EACH	FEET	SQ YD	SQ YD	SQ YD	SQ YD	FOOT	EACH
221.0								6	8			8	36	44
221.0								6	8			8	36	44
221.0								6	8			8	36	44
220.8	10	13			13	44	44							
220.8								12		16		16	48	44
220.6								8	11			11	40	44
220.5								10	13			13	44	44
220.5								6	8			8	36	44
220.5								6	8			8	36	44
220.2								6	8			8	36	44
219.9								10	13			13	44	44
219.8								6	8			8	36	44
219.6								6	8			8	36	44
219.6								8	11			11	40	44
219.4								6	8			8	36	44
219.4								6	8			8	36	44
219.3								22			29	29	68	51
219.3								6	8			8	36	44
219.2								6	8			8	36	44
219.1								6	8			8	36	44
219.0								8	11			11	40	44
219.0								20			27	27	64	50
219.0								6	8			8	36	44
219.0								6	8			8	36	44
218.9	15		20		20	54	44							
218.8								10	13			13	44	44
218.8								6	8			8	36	44
218.6								6	8			8	36	44
218.5								6	8			8	36	44
218.5	6	8			8	36	44							
218.5								6	8			8	36	44
218.5								8	11			11	40	44
218.5	6	8			8	36	44							
218.3	8	11			11	40	44							
218.3								6	8			8	36	44
218.3								6	8			8	36	44
218.2	8	11			11	40	44							
218.1								10	13			13	44	44
218.1								6	8			8	36	44
218.1								6	8			8	36	44
218.1	6	8			8	36	44							
SBL SUBTOTAL	59	59	20		79	286	308	264	280	16	56	352	1344	1509
SBL TOTAL	323	339	36	56	431	1630	1817							

MODEL: Default
FILE NAME: p:\pub\lans\room\dot\illinois.gov\PIWDOT\Documents\DOT_Offices\District_3\Projects\03366L76\0300\03366L76-PLAN.dwg

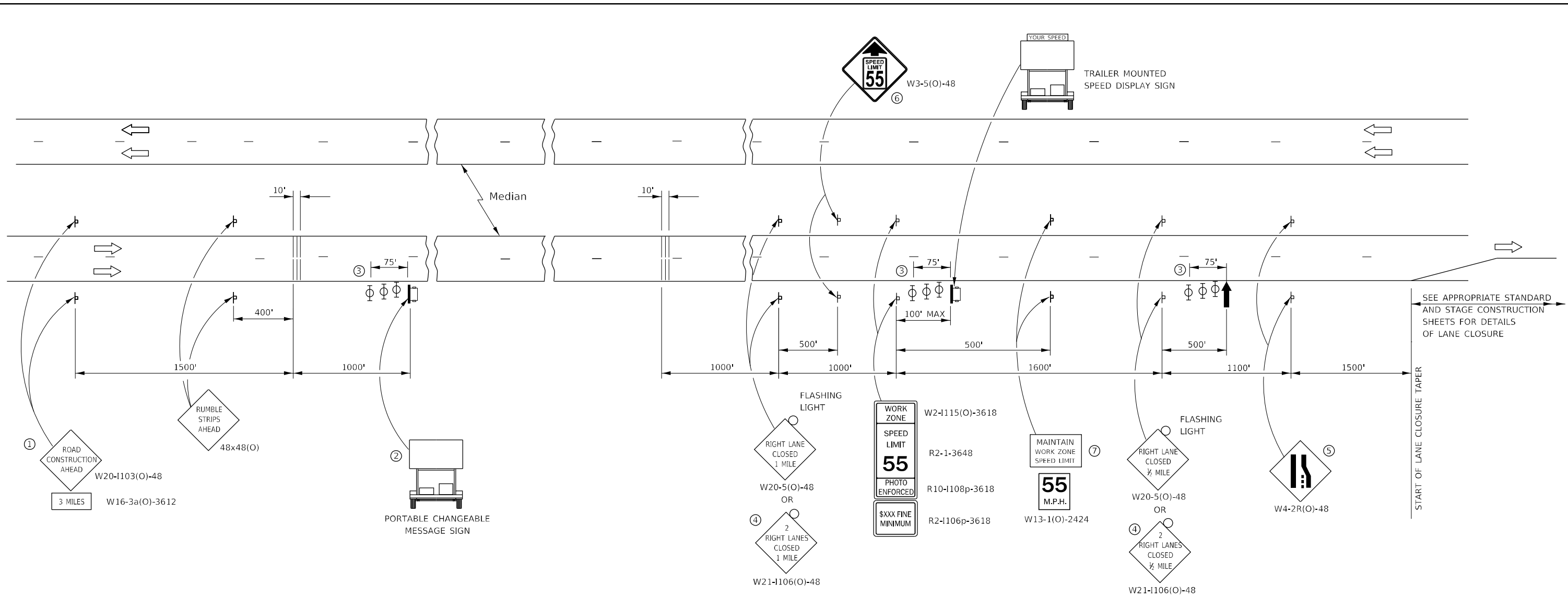
USER NAME = WOODSHANKRL	DESIGNED -	REVISED -
	DRAWN -	REVISED -
PLOT SCALE = 100,0000' / in.	CHECKED -	REVISED -
PLOT DATE = 2/24/2021	DATE -	REVISED -

**STATE OF ILLINOIS
DEPARTMENT OF TRANSPORTATION**

**SCHEDULES
GRUNDY COUNTY**

SCALE: SHEET 3 OF 3 SHEETS STA. TO STA.

F.A.I. RTE.	SECTION	COUNTY	TOTAL SHEETS	SHEET NO.
55	(53-1, 32-3)PP	LIVINGSTON & GRUNDY	11	7
CONTRACT NO. 66L76				
ILLINOIS FED. AID PROJECT				



SYMBOLS

- ARROW BOARD
- PORTABLE CHANGEABLE MESSAGE SIGN
- SIGN
- TYPE II BARRICADE, DRUM, OR VERTICAL BARRICADE WITH MONODIRECTIONAL FLASHING LIGHT
- TEMPORARY RUMBLE STRIPS (SEE SPECIAL PROVISION)

- ① THE ROAD CONSTRUCTION AHEAD SIGN SHALL BE LOCATED 3 MILES IN ADVANCE OF THE PROJECT LIMITS.
- ② TO BE PLACED IN THE MEDIAN WHEN FEASIBLE. THE MESSAGE BOARD SHALL BE USED TO DISPLAY STATUS OF LANES WITHIN THE PROJECT. THE PRIMARY MESSAGES SHALL BE:
"RIGHT LANE CLOSED" / " x MILES AHEAD"
"LEFT LANE CLOSED" / " x MILES AHEAD"
"ALL LANES OPEN"
- ③ THREE, TYPE II BARRICADES, DRUMS, OR VERTICAL BARRICADES AT 25' CENTERS.
- ④ THIS SIGN SHALL BE USED WHEN 2 LANES ARE CLOSED.
- ⑤ WHEN THE LEFT LANE IS CLOSED, SWITCH THESE TWO SIGNS AND THE DIRECTION OF THE MERGE ARROW.
- ⑥ THIS SIGN SHALL ONLY BE USED IF THE EXISTING SPEED LIMIT IS GREATER THAN 65 MPH.

- ⑦ 48"x36" FLUORESCENT ORANGE SIGN WITH BLACK LETTERS, 48"

MAINTAIN	8"
WORK ZONE	6"
SPEED LIMIT	6"

 COST OF THIS ADDITIONAL SIGN SHALL BE INCLUDED IN THIS STANDARD

GENERAL NOTE:

THIS STANDARD IS USED WHERE AT ANY TIME A LANE IS CLOSED ON A FREEWAY/EXPRESSWAY. WHEN THE LEFT LANE IS CLOSED, LEFT LANE CLOSED SIGNS SHALL BE SUBSTITUTED FOR THE RIGHT LAND CLOSED SIGNS.

THE FIRST TWO SIGNS, BOTH SETS OF RUMBLE STRIPS AND MESSAGE BOARD ARE STATIONARY.

THE LAST FIVE SIGNS AND ARROW BOARD SHALL BE MOVED AS NECESSARY TO MAINTAIN THE REQUIRED DISTANCE FROM THE START OF THE LANE CLOSURE TAPER(S).

MODEL: Default
 FILE NAME: \\pilot\lantron\dot\illinois.gov\PIWDOT\Documents\DOT_Offices\District_3\Projects\0366L76\CD000001\0366L76-PLANS.dwg

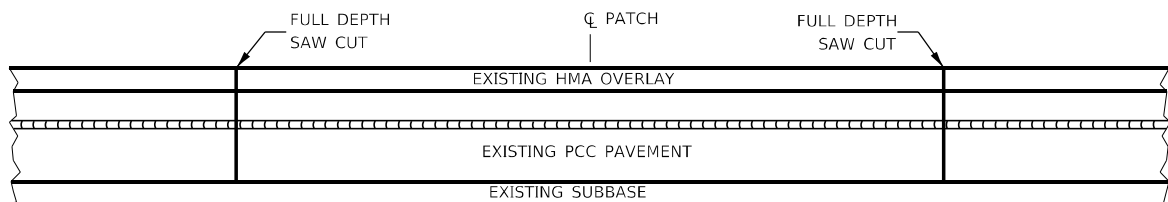
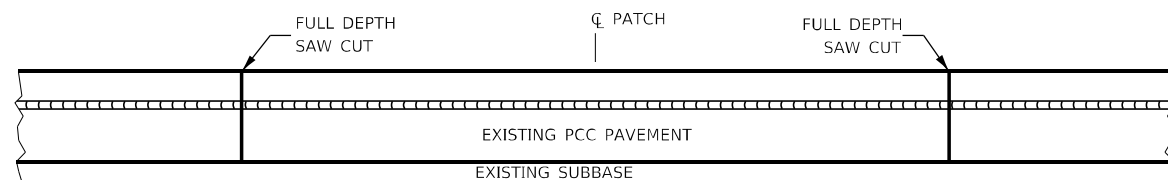
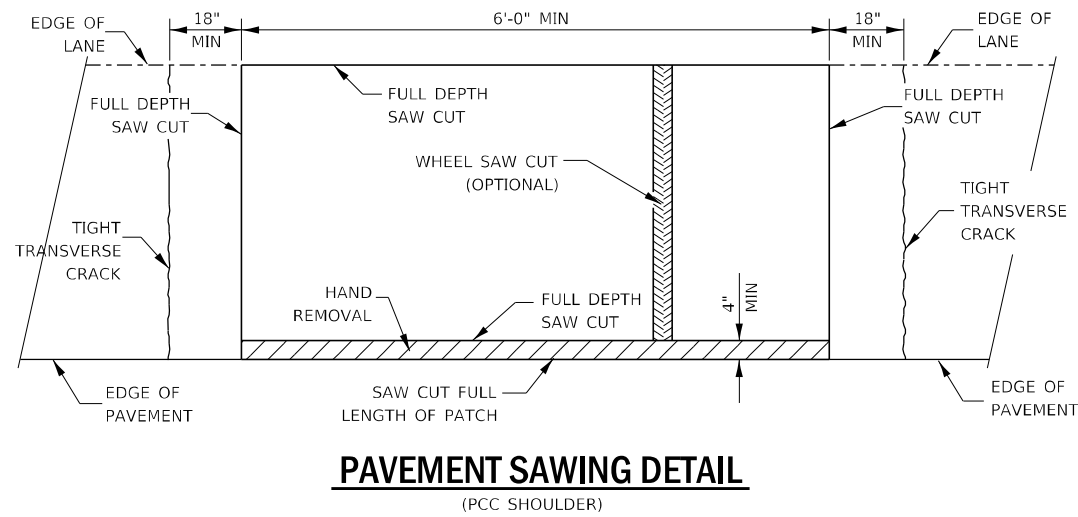
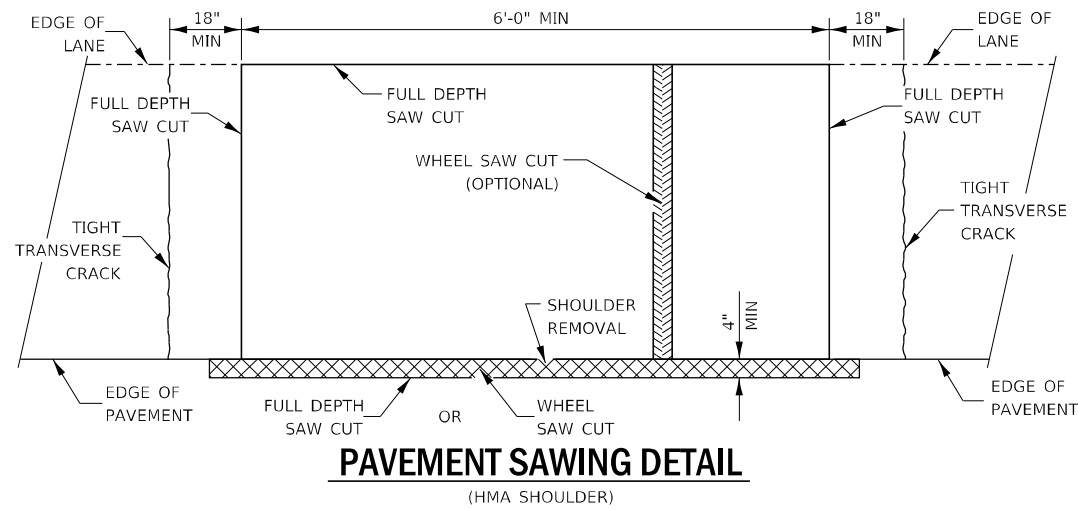
USER NAME = WOODSHANKRL	DESIGNED -	REVISED -
	DRAWN -	REVISED -
PLOT SCALE = 100,0000' / in.	CHECKED -	REVISED -
PLOT DATE = 2/24/2021	DATE -	REVISED -

**STATE OF ILLINOIS
DEPARTMENT OF TRANSPORTATION**

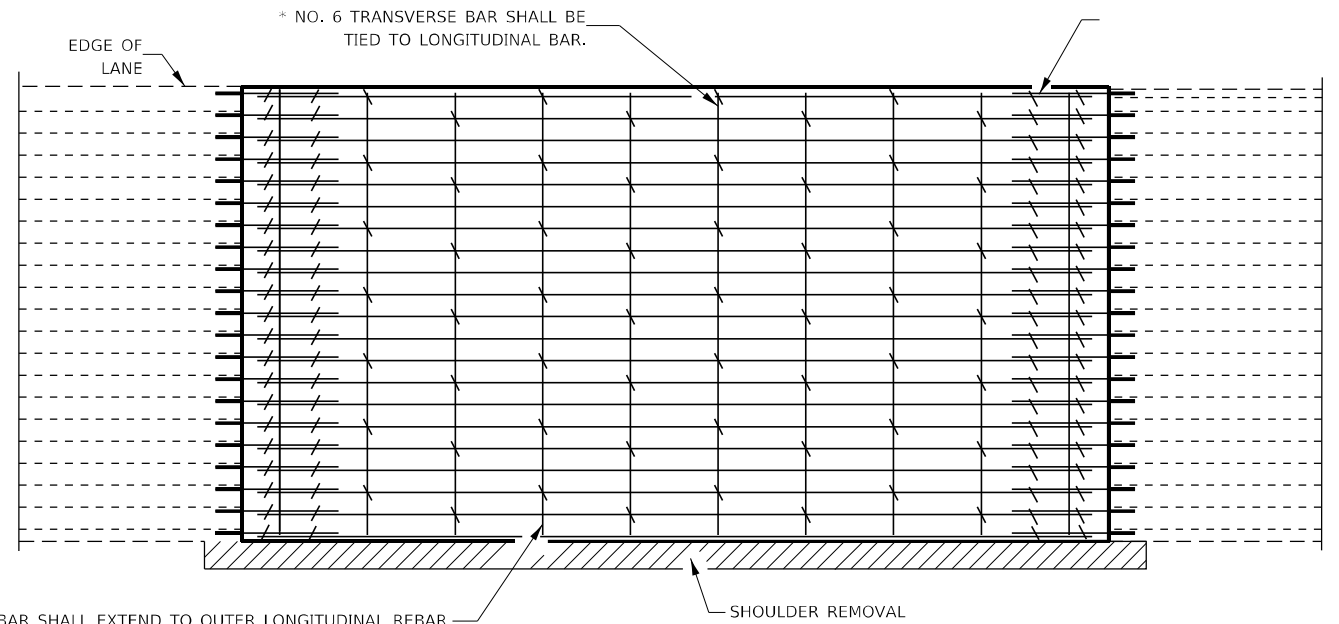
TRAFFIC CONTROL AND PROTECTION, STANDARD 701400

SCALE: SHEET 1 OF 1 SHEETS STA. TO STA.

F.A.I. RTE.	SECTION	COUNTY	TOTAL SHEETS	SHEET NO.
55	(53-1, 32-3)PP	LIVINGSTON & GRUNDY	11	8
CONTRACT NO. 66L76				
ILLINOIS FED. AID PROJECT				

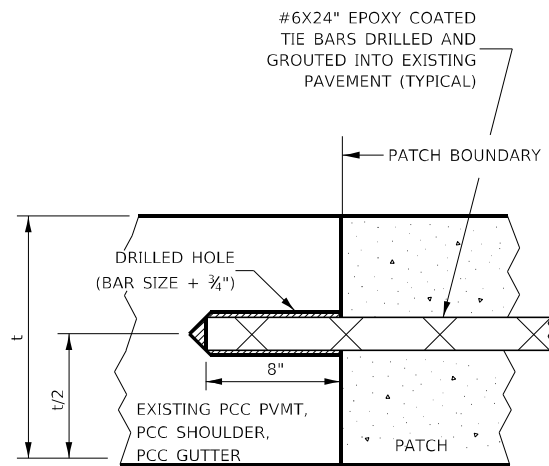


PAVEMENT SAWING DETAIL FOR CLASS A PATCHING (CRC PAVEMENT)



TRANSVERSE REBAR SHALL EXTEND TO OUTER LONGITUDINAL REBAR WHILE PROVIDING A MINIMUM 3" CLEARANCE FROM EXISTING PAVEMENT EDGE

PAVEMENT REINFORCEMENT DETAIL



LONGITUDINAL CONSTRUCTION JOINT

PATCHES MORE THAN 20' IN LENGTH SHALL BE TIED TO ADJACENT PAVEMENT, PCC SHOULDERS OR PCC CURB AND GUTTER WITH #6x24" EPOXY COATED TIE BARS AT 36" CENTERS.

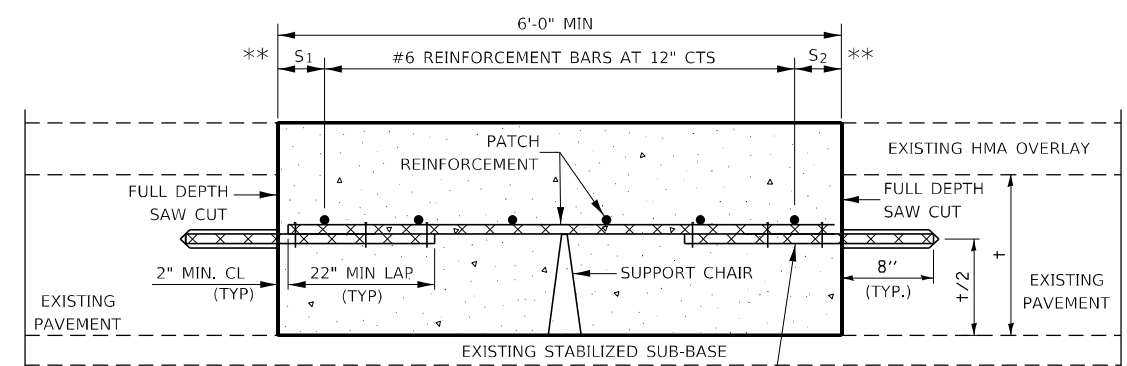
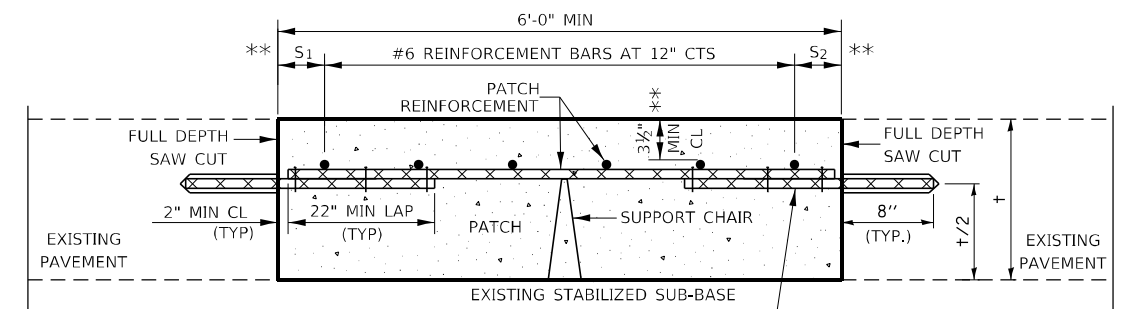
NOTES:

EXISTING #7 LONGITUDINAL REINFORCEMENT SPACING IS 7 1/4".

SPACING OF NEW LONGITUDINAL REINFORCEMENT AND NEW LONGITUDINAL TIE BARS SHALL MATCH SPACING OF EXISTING REINFORCEMENT AND SHALL BE TIED TOGETHER WITH A MINIMUM OF TWO TIES PER BAR.

* EVERY THIRD INTERSECTION MUST BE TIED. WHEN THE MINIMUM CLEARANCE CANNOT BE OBTAINED WITH THE TRANSVERSE REBAR ON TOP, THEN THE TRANSVERSE REBAR SHALL BE TIED TO THE BOTTOM OF THE LONGITUDINAL REBAR.

** VARIABLES WHERE S₁ AND S₂ ARE 2 1/2" MIN. AND 12" MAX.



PATCHING DETAIL FOR CLASS A PATCHING (CRC PAVEMENT)

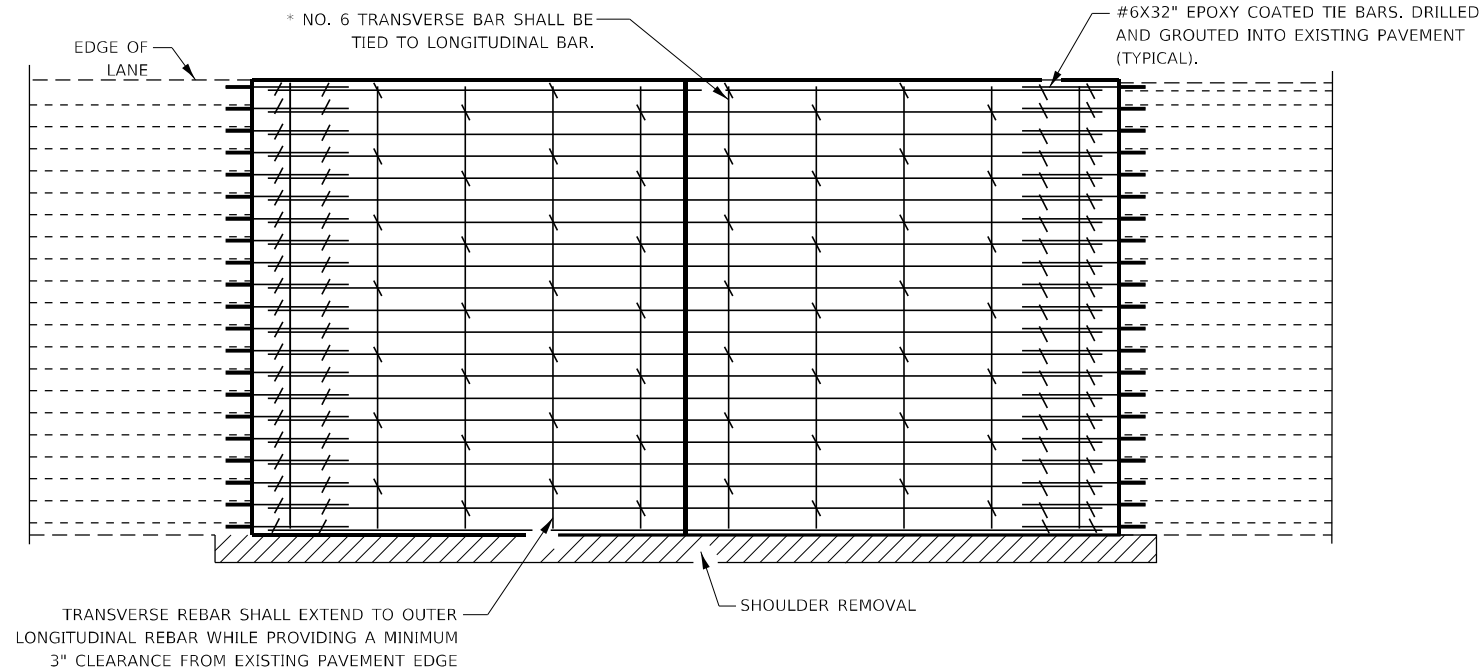
STATE OF ILLINOIS
DEPARTMENT OF TRANSPORTATION

SUMMARY OF QUANTITIES

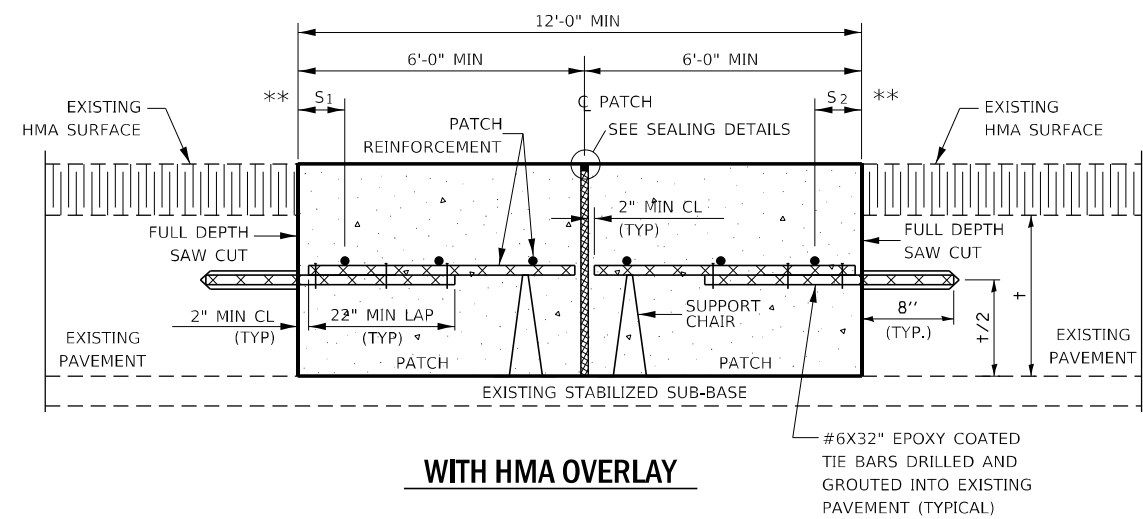
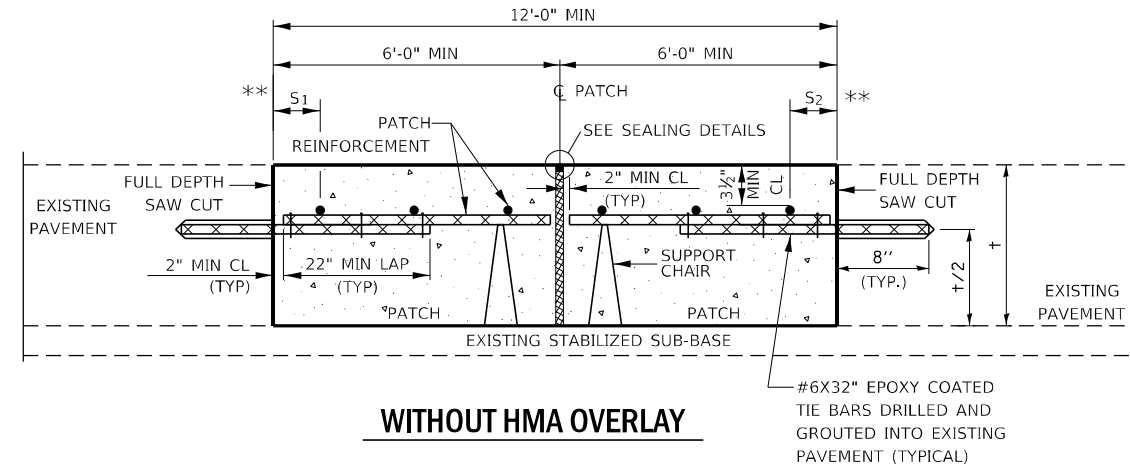
SCALE: SHEET 1 OF 2 SHEETS STA. TO STA.

F.A.I. RTE.	SECTION	COUNTY	TOTAL SHEETS	SHEET NO.
55	(53-1, 32-3)PP	LIVINGSTON & GRUNDY	11	9
CONTRACT NO. 66L76				
ILLINOIS / FED. AID PROJECT				

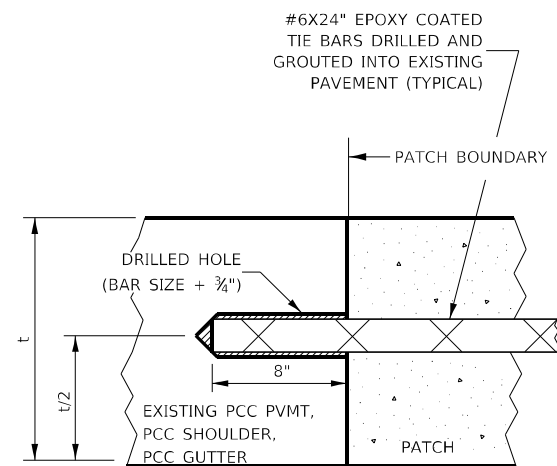
MODEL: Default
FILE NAME: p:\pub\mason.dwg
PROJECT: PWDOT\Documents\DOT Office\District 3\Projects\0366L76\0366L76-PLANS.dwg



PAVEMENT REINFORCEMENT DETAIL

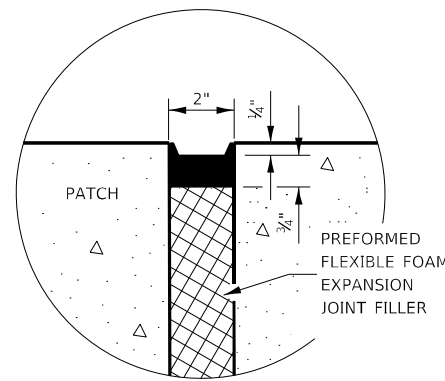


CLASS A PATCH WITH EXPANSION JOINT

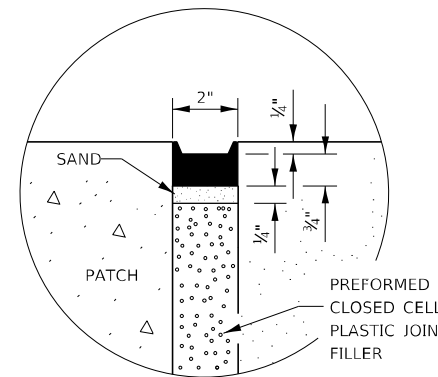


LONGITUDINAL CONSTRUCTION JOINT

PATCHES MORE THAN 20' IN LENGTH SHALL BE TIED TO ADJACENT PAVEMENT, PCC SHOULDERS OR PCC CURB AND GUTTER WITH #6x24" EPOXY COATED TIE BARS AT 36" CENTERS.



SEALING DETAIL



SEALING DETAIL

NOTES:

EXISTING LONGITUDINAL REINFORCEMENT SPACING; 4".

SPACING OF NEW LONGITUDINAL REINFORCEMENT AND NEW LONGITUDINAL TIE BARS SHALL MATCH SPACING OF EXISTING REINFORCEMENT AND SHALL BE TIED TOGETHER WITH A MINIMUM OF TWO TIES PER BAR.

SUPPORT CHAIRS SHALL BE REQUIRED WHENEVER PATCH LENGTH EXCEEDS 6'-0"

* EVERY THIRD INTERSECTION MUST BE TIED. WHEN THE MINIMUM CLEARANCE CANNOT BE OBTAINED WITH THE TRANSVERSE REBAR ON TOP, THEN THE TRANSVERSE REBAR SHALL BE TIED TO THE BOTTOM OF THE LONGITUDINAL REBAR.

** VARIABLES WHERE S₁ AND S₂ ARE 2 1/2" MIN. AND 12" MAX.

MODEL: Default
FILE NAME: p:\pub\lhamon.dwg
PROJECT: PWDOT\Documents\DOT Office\Drawings\3\Projects\0366L76\0366L76\0366L76-PLANS.dwg

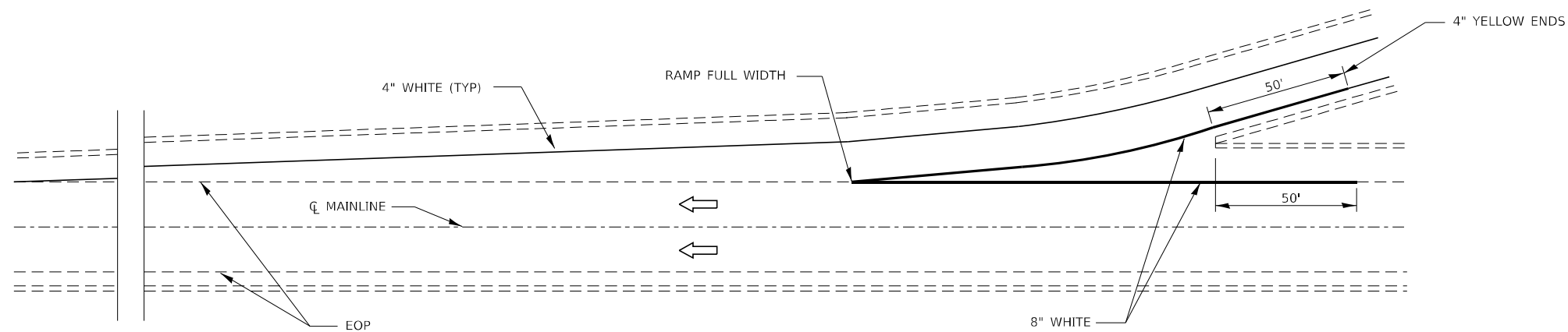
USER NAME = WOODSHANKRL	DESIGNED -	REVISED -
	DRAWN -	REVISED -
PLOT SCALE = 100,0000' / in.	CHECKED -	REVISED -
PLOT DATE = 2/24/2021	DATE -	REVISED -

**STATE OF ILLINOIS
DEPARTMENT OF TRANSPORTATION**

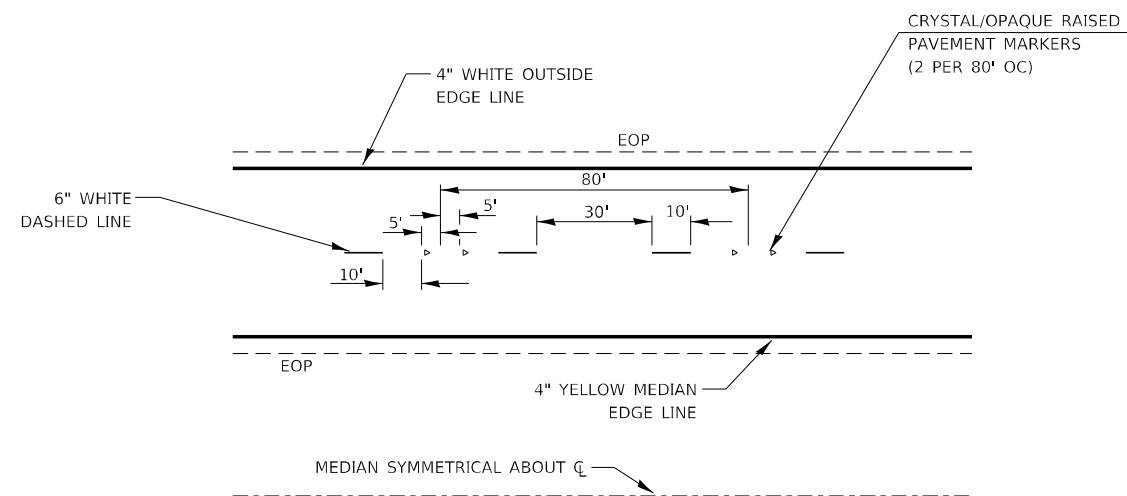
SUMMARY OF QUANTITIES

SCALE: SHEET 2 OF 2 SHEETS STA. TO STA.

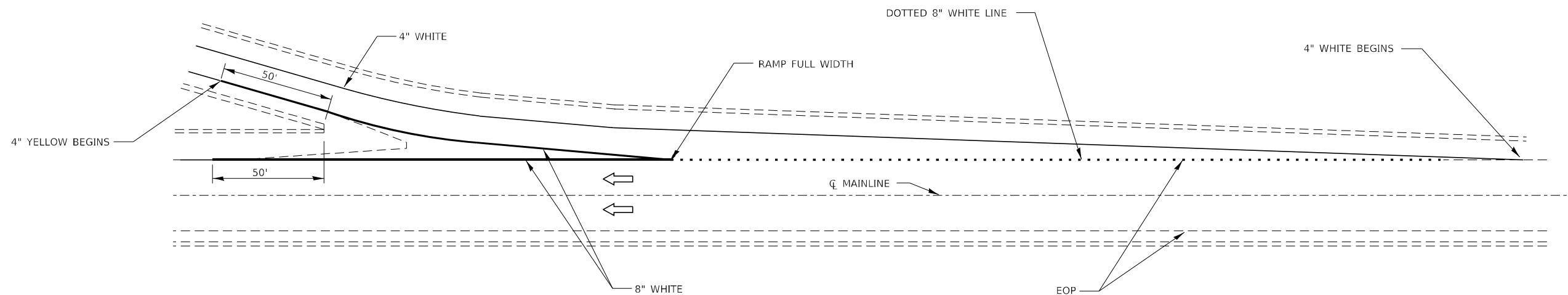
F.A.I. RTE.	SECTION	COUNTY	TOTAL SHEETS	SHEET NO.
55	(53-1, 32-3)PP	LIVINGSTON & GRUNDY	11	10
CONTRACT NO. 66L76				
ILLINOIS FED. AID PROJECT				



TYPICAL PAVEMENT MARKING FOR ENTRANCE RAMP TERMINALS



TYPICAL PAVEMENT MARKINGS



TYPICAL PAVEMENT MARKINGS FOR EXIT RAMP TERMINALS

MODEL: Default
 FILE NAME: p:\pub\harronm.dwt\illinois.dot\illinois\dot\Office\Drawings\3\Projects\0366L76\CD\0366L76-PLANS.dwg
 PROJECT: 0366L76-PLANS.dwg

USER NAME = WOODSHANKRL	DESIGNED -	REVISED -
	DRAWN -	REVISED -
PLOT SCALE = 100,0000' / in.	CHECKED -	REVISED -
PLOT DATE = 2/24/2021	DATE -	REVISED -

**STATE OF ILLINOIS
DEPARTMENT OF TRANSPORTATION**

PAVEMENT MARKING

SCALE: SHEET 1 OF 1 SHEETS STA. TO STA.

F.A.I. RTE.	SECTION	COUNTY	TOTAL SHEETS	SHEET NO.
55	(53-1, 32-3)PP	LIVINGSTON & GRUNDY	11	11
CONTRACT NO. 66L76				
ILLINOIS FED. AID PROJECT				