

STATE OF ILLINOIS
DEPARTMENT OF TRANSPORTATION

F.A.P. RTE.	SECTION	COUNTY	TOTAL SHEETS	SHEET NO.
325	113-1RS-2	JERSEY	11	1
		ILLINOIS	CONTRACT NO. 76K85	

FOR INDEX OF SHEETS, SEE SHEET NO. 2

TRAFFIC DATA

FROM GRANGE HALL RD TO MACOUPIN COUNTY LINE

2019 ADT = 2500 (ACTUAL)
2022 ADT = 2650 (ESTIMATED)
2042 ADT = 3200 (ESTIMATED)
SU = 6.4% MU = 5.2%

FUNCTIONAL CLASSIFICATION:

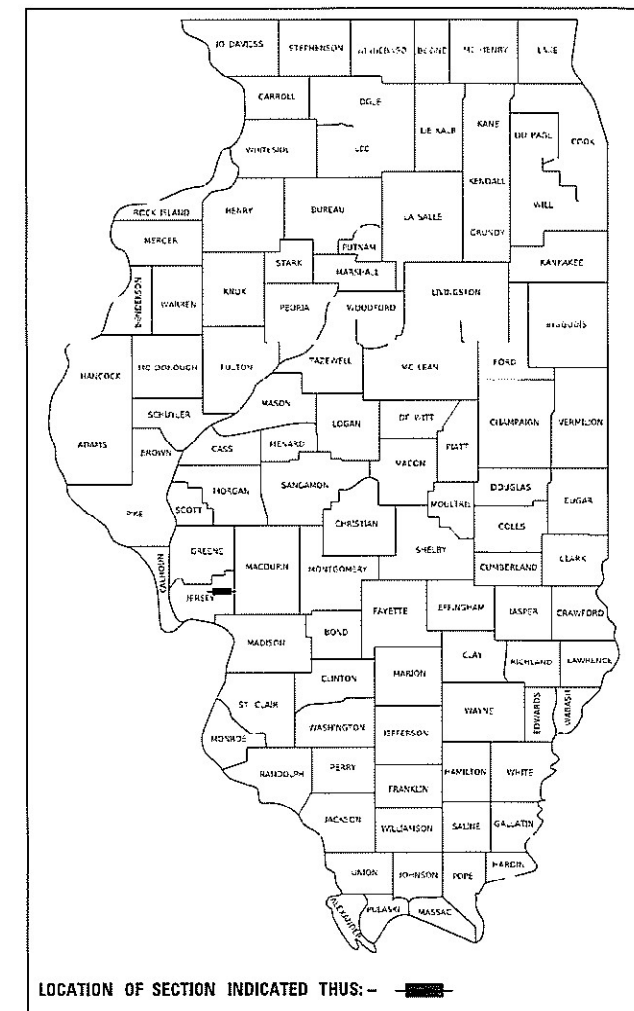
OTHER ARTERIAL

**PROPOSED
HIGHWAY PLANS**

FAP ROUTE 325 (IL 16)
SECTION 113-1RS-2
PROJECT NHPP-RL08(739)
RESURFACING - DESIGNED OVERLAY
JERSEY COUNTY

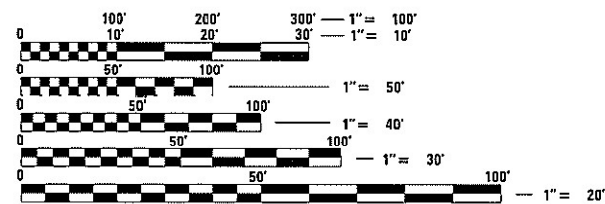
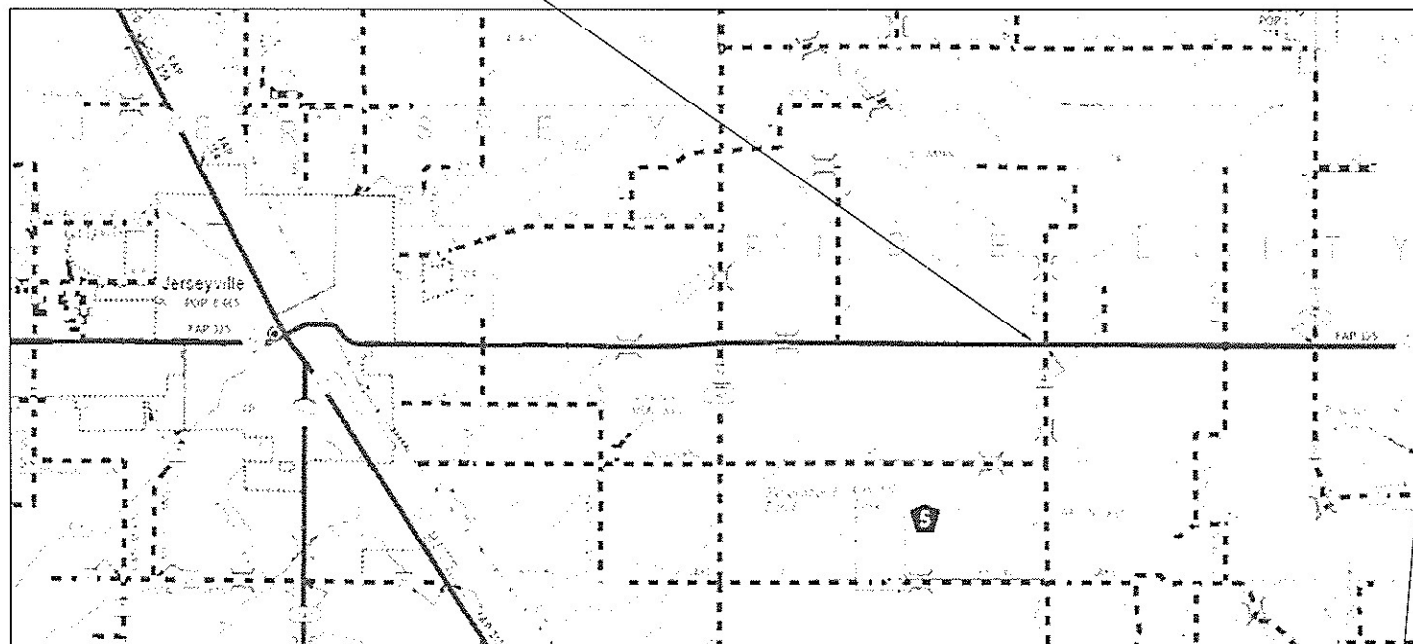
C-98-068-19

D-98-051-19



BEGIN IMPROVEMENT
STA. 1415+00
LAT: 39.115989
LONG: -90.206795

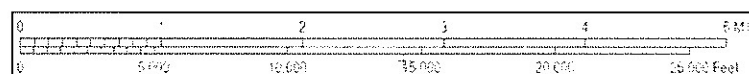
R 10 W



FULL SIZE PLANS HAVE BEEN PREPARED USING STANDARD ENGINEERING SCALES. REDUCED SIZED PLANS WILL NOT CONFORM TO STANDARD SCALES. IN MAKING MEASUREMENTS ON REDUCED PLANS, THE ABOVE SCALES MAY BE USED.

J.U.L.I.E.
JOINT UTILITY LOCATION INFORMATION FOR EXCAVATORS
1-800-892-0123
DR 811

SCALE



END IMPROVEMENT
STA. 1588+29
(JERSEY COUNTY LINE)
LAT:39.115854
LONG: -90.146184

PROJECT ENGINEER: BILLIE OWEN (618)346-3209
PROJECT MANAGER: PHILLIP FREIMUTH (618)346-3194

CONTRACT NO. 76K85

GROSS LENGTH = 17329.00 FT. = 3.282 MILE
NET LENGTH = 17329.00 FT. = 3.282 MILE

STATE OF ILLINOIS
DEPARTMENT OF TRANSPORTATION

SUBMITTED *March 2, 2021*
Keith Roberts
REGIONAL ENGINEER

May 7, 2021
Scott A. Elk
ENGINEER OF DESIGN AND ENVIRONMENT

May 7, 2021
Jessie M. Jones
DIRECTOR OF HIGHWAYS PROJECT IMPLEMENTATION

PRINTED BY THE AUTHORITY
OF THE STATE OF ILLINOIS

INDEX OF SHEETS

1	COVER SHEET
2	INDEX OF SHEETS, HIGHWAY STANDARDS, GENERAL NOTES, MIXTURE REQUIREMENTS, & COMMITMENTS
3-4	SUMMARY OF QUANTITIES
5	TYPICAL SECTIONS
6-8	SCHEDULE OF QUANTITIES
9	SURVEY TIES
10	LOCATION MAP
11	RESURFACING DETAILS

GENERAL NOTES:

① UTILITIES KNOWN TO HAVE FACILITIES WITHIN THE PROJECT AREA ARE AS FOLLOWS:

	AERIAL	BURIED
AMEREN ILLINOIS	X	X
FRONTIER COMMUNICATIONS	X	X
JERSEY COUNTY RURAL WATER COMPANY		X
NEWWAVE COMMUNICATIONS	X	X

② NO SURVEY WAS PERFORMED FOR THIS PROJECT. THE PLANS WERE CREATED USING MICROFILM AND FIELD MEASUREMENTS.

③ NO OVERNIGHT LANE CLOSURES WILL BE PERMITTED.

④ THE PROPOSED PAVEMENT MARKINGS SHALL MATCH THE LOCATIONS OF THE EXISTING PAVEMENT MARKING, AS DIRECTED BY THE ENGINEER.

⑤ IF THE SURFACE REMOVAL ON THIS PROJECT PRODUCES A MILLED EDGE ANYWHERE GREATER THAN 1.5 INCHES BETWEEN ADJACENT OPEN LANES OF TRAFFIC, ONE OF THE FOLLOWING SHALL APPLY:

- THE CONTRACTOR SHALL ORGANIZE THE WORK TO AVOID THE MILLED EDGE.
- THE CONTRACTOR SHALL CONSTRUCT A TEMPORARY HOT MIX ASPHALT WEDGE ALONG THE MILLED EDGE.
- THE CONTRACTOR SHALL CONSTRUCT A MILLED SLOPED EDGE (MINIMUM 1:3) ALONG THE MILLED EDGE.

⑥ TRAFFIC WILL NOT BE ALLOWED ON ANY EXPOSED PORTLAND CEMENT CONCRETE PAVEMENT AFTER HOT-MIX ASPHALT SURFACE REMOVAL. BEFORE LANES CAN BE RE-OPENED TO TRAFFIC, PROPOSED HOT-MIX ASPHALT BINDER COURSE SHALL BE PLACED.

⑦ MTD CAN OPERATE IN AN UNLOADED CONDITION ON SN 042-2434. THE MATERIAL TRANSFER DEVICE CANNOT OPERATE ON SN 042-2433, SEE LOCATION MAP FOR THE STRUCTURES' LOCATION.

⑧ THE INTENT OF THE MILLING IS TO REMOVE THE HMA SURFACE ONLY. THE UNDERLYING PORTLAND CEMENT CONCRETE SHALL NOT BE DISTURBED.

⑨ ONLY SHORT-TERM MARKING FROM THE FINAL SURFACE SHALL BE PAID FOR AS "SHORT TERM PAVEMENT MARKING REMOVAL."

⑩ THE CONTRACTOR SHALL PROVIDE POSITIVE AND ADEQUATE DRAINAGE AT ALL TIMES.

⑪ TWO CHANGEABLE MESSAGE BOARDS SHALL BE REQUIRED FOR THIS PROJECT. THEY SHALL BE PLACED TWO WEEKS PRIOR TO ANY LANE CLOSURE. THE EXACT LOCATIONS SHALL BE DETERMINED BY THE ENGINEER.

⑫ THE CONTRACTOR SHALL REPLACE THE MATERIAL REMOVED FOR THE CONSTRUCTION OF THE 4FT HMA SHOULDER WITH THE FIRST LIFT OF THE HMA SHOULDER WITHIN THE SAME DAY TO PREVENT SEDIMENT EROSION.

HIGHWAY STANDARDS

000001-08	STANDARD SYMBOLS, ABBREVIATIONS AND PATTERNS
001006	DECIMAL OF AN INCH AND OF A FOOT
420001-09	PAVEMENT JOINTS
442201-03	CLASS C AND D PATCHES
701001-02	OFF-RD OPERATIONS, 2L, 2W, MORE THAN 15' AWAY
701006-05	OFF-RD OPERATIONS, 2L, 2W, 15' TO 24" FROM PAVEMENT EDGE
701011-04	OFF-RD MOVING OPERATIONS, 2L, 2W, DAY ONLY
701201-05	LANE CLOSURE, 2L, 2W, DAY ONLY, FOR SPEEDS ≥ 45 MPH
701301-04	LANE CLOSURE, 2L, 2W, SHORT TIME OPERATION
701306-04	LANE CLOSURE, 2L, 2W, SLOW MOVING OPERATIONS DAY ONLY, FOR SPEEDS ≥ 45 MPH
701311-03	LANE CLOSURE, 2L, 2W MOVING OPERATIONS - DAY ONLY
701326-04	LANE CLOSURE, 2L, 2W, PAVEMENT WIDENING ,FOR SPEED ≥ 45 MPH
701336-07	LANE CLOSURE, 2L, 2W, WORK AREAS IN SERIES, FOR SPEEDS ≥ 45 MPH
701901-08	TRAFFIC CONTROL DEVICES
780001-05	TYPICAL PAVEMENT MARKINGS
781001-04	TYPICAL APPLICATIONS RAISED REFLECTIVE PAVEMENT MARKERS

MIXTURE REQUIREMENTS

ADT (CONSTRUCTION YR.):	2500
MU%	5.2
SU%	6.4
20 YR. ESAL'S	0.92

MIXTURE USE	SURFACE	BINDER	INCIDENTAL
AC/PG	PG 64-22	PG 64-22	PG 64-22
RAP % (MAX)	SEE SPECIAL PROVISION	SEE SPECIAL PROVISION	SEE SPECIAL PROVISION
DESIGN AIR VOIDS	4.0% @ Ndes=70	4.0% @ Ndes=70	4.0% @ Ndes=70
MIX COMPOSITION (Gradation)	IL 9.5	IL 19.0	IL 9.5
FRICTION AGG	MIXTURE "C"	MIXTURE "B"	MIXTURE "C"
QUALITY MGMT PROGRAM	QCP	QCP	QC/QA

MIXTURE USE	SHOULDERS (LOWER)	SHOULDERS (SURFACE)	PATCHING
AC/PG	PG 64-22	PG 64-22	PG 64-22
RAP % (MAX)	SEE SPECIAL PROVISION	SEE SPECIAL PROVISION	SEE SPECIAL PROVISION
DESIGN AIR VOIDS	4.0% @ Ndes=30	4.0% @ Ndes=30	4.0% @ Ndes=70
MIX COMPOSITION (Gradation)	IL 19.0L	IL 9.5L	IL 19.0
FRICTION AGG			MIXTURE "B"
QUALITY MGMT PROGRAM	QC/QA	QC/QA	QC/QA

PLAN QUANTITIES FOR HMA SURFACE COURSE ITEMS ARE CALCULATED USING A UNIT WEIGHT OF 112 LB/SQ YD/IN

COMMITMENTS

NONE

MODEL: Default
FILE NAME: p:\pub\mroom.dwt\illinois.gov\PWIDOT\Documents\DOT Office\Distric: 8\Projects\0876885\CADDData\CAD\Sheet\0876885-Plc-gen-note.cgn

USER NAME = ruhollids	DESIGNED -	REVISED -
	DRAWN -	REVISED -
PLOT SCALE = 100,0000' / in.	CHECKED -	REVISED -
PLOT DATE = 3/1/2021	DATE -	REVISED -

**STATE OF ILLINOIS
DEPARTMENT OF TRANSPORTATION**

**INDEX OF SHEETS, HIGHWAY STANDARDS, GENERAL NOTES,
MIXTURE REQUIREMENTS & COMMITMENTS**

SCALE: SHEET 1 OF 1 SHEETS STA. TO STA.

F.A.P. RTE.	SECTION	COUNTY	TOTAL SHEETS	SHEET NO.
325	113-1RS-2	JERSEY	11	2
CONTRACT NO. 76K85				
		ILLINOIS	FED. AID PROJECT	

CODE NO.	ITEM	UNIT	80% FED 20% STATE		CONSTR. CODE
			TOTAL QUANTITY		ROADWAY
					0005
20200600	EXCAVATING AND GRADING EXISTING SHOULDER	UNIT	342	342	
40600290	BITUMINOUS MATERIALS (TACK COAT)	POUND	38027	38027	
40600982	HOT-MIX ASPHALT SURFACE REMOVAL - BUTT JOINT	SQ YD	387	387	
40600990	TEMPORARY RAMP	SQ YD	601	601	
40603085	HOT-MIX ASPHALT BINDER COURSE, 1L-19.0, N70	TON	5823	5823	
40604052	HOT-MIX ASPHALT SURFACE COURSE, 1L-9.5, MIX "C", N70	TON	3882	3882	
40800029	BITUMINOUS MATERIALS (TACK COAT)	POUND	135	135	
40800050	INCIDENTAL HOT-MIX ASPHALT SURFACING	TON	44	44	
44000164	HOT-MIX ASPHALT SURFACE REMOVAL, 3 3/4"	SQ YD	46211	46211	
44200144	PAVEMENT PATCHING, TYPE II, 12 INCH	SQ YD	76	76	
44200148	PAVEMENT PATCHING, TYPE III, 12 INCH	SQ YD	16	16	
44300200	STRIP REFLECTIVE CRACK CONTROL TREATMENT	FOOT	34658	34658	
48102100	AGGREGATE WEDGE SHOULDER, TYPE B	TON	633	633	
48203029	HOT-MIX ASPHALT SHOULDERS, 8"	SQ YD	15188	15188	

CODE NO.	ITEM	UNIT	80% FED 20% STATE		CONSTR. CODE
			TOTAL QUANTITY		ROADWAY
					0005
64200108	SHOULDER RUMBLE STRIPS, 8 INCH	FOOT	33693	33693	
67000400	ENGINEER'S FIELD OFFICE, TYPE A	CAL MO	3	3	
67100100	MOBILIZATION	L SUM	1	1	
70100450	TRAFFIC CONTROL AND PROTECTION, STANDARD 701201	L SUM	1	1	
70100460	TRAFFIC CONTROL AND PROTECTION, STANDARD 701306	L SUM	1	1	
70100500	TRAFFIC CONTROL AND PROTECTION, STANDARD 701326	L SUM	1	1	
70100600	TRAFFIC CONTROL AND PROTECTION, STANDARD 701336	L SUM	1	1	
70103815	TRAFFIC CONTROL SURVEILLANCE	CAL DA	5	5	
70107025	CHANGEABLE MESSAGE SIGN	CAL DA	28	28	
70300100	SHORT TERM PAVEMENT MARKING	FOOT	3150	3150	
70300150	SHORT TERM PAVEMENT MARKING REMOVAL	SQ FT	525	525	
70300220	TEMPORARY PAVEMENT MARKING - LINE 4"	FOOT	43915	43915	
* 78000200	THERMOPLASTIC PAVEMENT MARKING - LINE 4"	FOOT	43915	43915	
* 78100100	RAISED REFLECTIVE PAVEMENT MARKER	EACH	217	217	

* SPECIALTY ITEM

MODEL: Default
 FILE NAME: p:\pub\mroom.dwg
 PROJECT: 076885-CADD\DATA\CAD\PROJECTS\076885-PL-500.dgn
 OFFICE: DISTRICT 8
 DATE: 3/1/2021

USER NAME = ruhollids	DESIGNED -	REVISED -
	DRAWN -	REVISED -
PLOT SCALE = 100,0000' / in.	CHECKED -	REVISED -
PLOT DATE = 3/1/2021	DATE -	REVISED -

**STATE OF ILLINOIS
DEPARTMENT OF TRANSPORTATION**

SUMMARY OF QUANTITIES

SCALE: SHEET 1 OF 2 SHEETS STA. TO STA.

F.A.P. RTE.	SECTION	COUNTY	TOTAL SHEETS	SHEET NO.
325	113-1RS-2	JERSEY	11	3
CONTRACT NO. 75K85				
ILLINOIS FED. AID PROJECT				

MAINLINE RESURFACING SCHEDULE									
LOCATION			HMA SURFACE REMOVAL, 3.75"	BITUMINOUS MATERIALS (TACK COAT) ¹	HMA BINDER COURSE, 1L-19.0, N70	HMA SURFACE COURSE, 1L-9.5, MIX "C", N 70	LONGITUDINAL JOINT SEALANT	MATERIAL TRANSFER DEVICE	STRIP REFLECTIVE CRACK CONTROL TREATMENT
STA.	TO	STA.	(SQ YD)	(POUND)	(TON)	(TON)	(FT)	(TON)	(FT)
1415+00	TO	1588+29	46,210.7	31,192.2	5,822.5	3,881.7	17,329.0	9,704.2	34658
SUB-TOTAL			46,210.7	31,192.2	5,822.5	3,881.7	17,329.0	9,704.2	34,658.0
TOTAL			46,211	31,192	5,823	3,882	17,329	9,705	34,658

¹ SEE SHOULDER SCHEDULE FOR ADDITIONAL QUANTITY

SHOULDER SCHEDULE							
LOCATION			EXCAVATING AND GRADING EXISTING SHOULDER	HMA SHOULDERS, 8"	BITUMINOUS MATERIAL (TACK COAT) ²	AGGREGATE WEDGE SHOULDERS, TYPE B	RUMBLE STRIPS, 8"
STA.	TO	STA.	(UNIT)	(SQ YD)	(POUND)	(TON)	(FOOT)
1415+00	TO	1588+29	341.7	15,188.0	6,834.6	632.8	33,693.0
SUB-TOTAL			341.7	15,188.0	6,834.6	632.8	33,693.0
TOTAL			342	15,188	6,835	633	33,693

² SEE MAINLINE PAVING SCHEDULE FOR ADDITIONAL QUANTITY

PAVEMENT PATCHING 12 INCH SCHEDULE					
LOCATION		LENGTH	WIDTH	PAVEMENT PATCHING TYPE II	PAVEMENT PATCHING TYPE III
STA.	EB/WB	(FT)	(FT)	(SQ YD)	(SQ YD)
1437+70	WB	4	12	5.3	
1437+70	EB	12	12		16.0
1444+56	WB	4	12	5.3	
1444+56	EB	8	12	10.7	
1456+18	WB	4	12	5.3	
1456+18	EB	4	12	5.3	
1470+44	WB	6	12	8.0	
1470+44	EB	6	12	8.0	
1495+78	WB	6	12	8.0	
1516+90	WB	5	12	6.7	
1516+90	EB	5	12	6.7	
1573+92	EB	4	12	5.3	
SUBTOTAL				74.6	16.0
ANTICIPATED FAILURES (15%)				1.1	0.2
TOTAL				76	16

MODEL: Default
 FILE NAME: p:\planningroom\dot\illinois\gov\pwwdot\Documents\DOT_Offices\District 8\Projects\076K85\CADDData\CAD\Sheet\076K85-PL-2-001.dgn

USER NAME = ruhollis	DESIGNED -	REVISED -
	DRAWN -	REVISED -
PLOT SCALE = 100,0000' / in.	CHECKED -	REVISED -
PLOT DATE = 3/1/2021	DATE -	REVISED -

**STATE OF ILLINOIS
DEPARTMENT OF TRANSPORTATION**

SCHEDULE OF QUANTITIES

SCALE: SHEET 1 OF 3 SHEETS STA. TO STA.

F.A.P. RTE.	SECTION	COUNTY	TOTAL SHEETS	SHEET NO.
325	113-1RS-2	JERSEY	11	6
CONTRACT NO. 76K85				
ILLINOIS FED. AID PROJECT				

ENTRANCE SCHEDULE				
LOCATION		DESCRIPTION	TYPE	WIDTH
MI. STA.	RT/LT			(FT)
1432+99	RT	ENTRANCE	AGG	25
1433+57	RT	MAILBOX TURNOUT	AGG	30
1434+03	RT	ENTRANCE	AGG	40
1454+14	LT	ENTRANCE	CONCRETE	50
1455+59	LT	ENTRANCE	CONCRETE	50
1462+91	RT	ENTRANCE W/ MB	AGG	50
1493+64	LT	ENTRANCE	AGG	30
15508+89	LT	ENTRANCE W/ MB	AGG	45
1523+91	LT	MAILBOX TURNOUT	AGG	40
1524+26	LT	ENTRANCE	AGG	45
1528+36	LT	ENTRANCE	AGG	45
1549+04	LT	ENTRANCE	AGG	40
1549+13	RT	ENTRANCE W/ MB	AGG	30
1581+57	RT	ENTRANCE	AGG	30
1583+00	RT	ENTRANCE W/ MB	AGG	30

FOR INFORMATIONAL PURPOSES ONLY

BUTT JOINT AND TEMPORARY RAMP SCHEDULE						
LOCATION	NAME	LENGTH (BUTT JOINT)	WIDTH	HMA SURFACE REMOVAL - BUTT JOINT	TEMPORARY RAMP (3.75") ^{1,2}	TEMPORARY RAMP (1.5") ²
STA.		(FT)	(FT)	(SQ YD)	(SQ YD)	(SQ YD)
1415+00	IL 16		24		33.3	13.3
1416+02	GRANGE HALL RD	8	55	48.9	48.9	30.6
1416+02	GRANGE HALL RD	8	70	62.2	62.2	38.9
1442+63	SCHNEIDER DR	16	50	88.9	44.4	27.8
1454+14	CONCRETE ENTRANCE		50		11.1	11.1
1455+59	CONCRETE ENTRANCE		50		11.1	11.1
1495+98	TUETKEN RD	8	50	44.4	44.4	27.8
1495+98	TUETKEN RD	8	50	44.4	44.4	27.8
1536+01	FIDELITY RD / OAK REST RD	8	55	48.9	48.9	30.6
1536+01	FIDELITY RD / OAK REST RD	8	55	48.9	48.9	30.6
1588+29	IL 16		24		33.3	13.3
SUBTOTAL				386.6	364.3	236.3
TOTAL				387		601

¹ THE TEMPORARY RAMPS LOCATED AT THE SIDE ROADS CANNOT BE CONSTRUCTED AT A TAPER RATE OF 40:1 WITHOUT IMPACTING THE MAINLINE PAVEMENT RESURFACING. THE TEMPORARY RAMPS SHALL BE CONSTRUCTED TO THE EDGE OF PAVEMENT (WIDTH OF 8.0FT) AT THESE LOCATIONS.

² THE TEMPORARY RAMPS LOCATED AT THE PAVED ENTRANCES CANNOT BE CONSTRUCTED AT A TAPER RATE OF 40:1 WITHOUT IMPACTING THE MAINLINE PAVEMENT RESURFACING. THE TEMPORARY RAMPS SHALL BE CONSTRUCTED TO A WIDTH OF 2.0FT AT THESE LOCATIONS.

SIDE ROAD SCHEDULE								
LOCATION			Type	WIDTH		LENGTH (FT)	BITUMINOUS MATERIALS (TACK COAT) (POUND)	INCIDENTAL HMA SURFACING (TON)
NAME	STA.	RT/LT		FRONT (FT)	BACK (FT)			
GRANGE HALL RD	1416+02	LT	OIL & CHIP	55	30	8	17.0	5.6
GRANGE HALL RD	1416+02	RT	OIL & CHIP	70	45	8	23.0	7.5
SCHNEIDER DR	1442+63	LT	OIL & CHIP	50	20	16	28.0	9.1
TUETKEN RD	1495+98	LT	OIL & CHIP	50	25	8	15.0	4.9
TUETKEN RD	1495+98	RT	OIL & CHIP	50	25	8	15.0	4.9
FIDELITY RD / OAK REST RD	1536+01	LT	OIL & CHIP	55	35	8	18.0	5.9
FIDELITY RD / OAK REST RD	1536+01	RT	OIL & CHIP	55	40	8	19.0	6.2
SUBTOTAL							135.0	44.1
TOTAL							135	44

MODEL: Default
 FILE NAME: p:\pub\mroom.edu\illinois.gov\PWIDOT\Documents\DOT Office\District 8\Projects\0776K85\CADDData\CAD\Sheet\0776K85-PL-ENTRANCE.dgn

USER NAME = ruhollis	DESIGNED -	REVISED -
	DRAWN -	REVISED -
PLOT SCALE = 100,0000' / in.	CHECKED -	REVISED -
PLOT DATE = 3/1/2021	DATE -	REVISED -

**STATE OF ILLINOIS
DEPARTMENT OF TRANSPORTATION**

SCHEDULES OF QUANTITIES

SCALE: SHEET 2 OF 3 SHEETS STA. TO STA.

F.A.P RTE.	SECTION	COUNTY	TOTAL SHEETS	SHEET NO.
325	113-1RS-2	JERSEY	11	7
CONTRACT NO. 76K85				
ILLINOIS FED. AID PROJECT				

SHORT TERM PAVEMENT MARKING SCHEDULE ¹				
LOCATION			LINE - 4"	SHORT TERM PAVEMENT MARKING REMOVAL
			SKIP-DASH YELLOW	
STA.	TO	STA.	(FT)	(SQ FT)
1415+00	TO	1588+29	3150	525.0
SUB-TOTAL			3150	525.0
TOTAL			3150	525

¹ 2 APPLICATIONS OF THE YELLOW SKIP-DASH WERE ASSUMED. ONLY THE REMOVAL OF THE FINAL APPLICATION WILL BE PAID FOR.

PAVEMENT MARKING SCHEDULE											
LOCATION			THERMOPLASTIC / TEMPORARY PAVEMENT MARKING				TEMPORARY PAVEMENT MARKING REMOVAL	RAISED REFLECTIVE PAVEMENT MARKER	RAISED REFLECTIVE PAVEMENT MARKER REMOVAL		
			LINE - 4"								
			SOLID WHITE EDGELINE ₂	SOLID YELLOW	SOLID DOUBLE YELLOW	SKIP-DASH YELLOW					
STA.	TO	STA.	(FT)	(FT)	(FT)	(FT)	(SQ FT)	(EACH)	(EACH)		
1415+00	TO	1418+82	639			96	245.0	217	217		
1418+82	TO	1423+13	862	431		108	467.0				
1423+13	TO	1424+22	218		218		145.3				
1424+22	TO	1430+19	1,194	597		149	646.7				
1430+19	TO	1434+48	858			107	321.7				
1434+48	TO	1441+38	1,380	690		173	747.7				
1441+38	TO	1450+85	1,844			237	693.7				
1450+85	TO	1456+67	1,164	582		146	630.7				
1456+67	TO	1461+75	1,016			127	381.0				
1461+75	TO	1467+79	1,208	604		151	654.3				
1467+79	TO	1533+04	12,950			1631	4,860.3				
1533+04	TO	1538+38	958	534		134	542.0				
1538+38	TO	1547+73	1,870			234	701.3				
1547+73	TO	1553+07	1,068	534		134	578.7				
1553+07	TO	1575+59	4,504			563	1,689.0				
1575+59	TO	1585+75	2,032	1,016		254	1,100.7				
1585+75	TO	1587+00	250			31	93.7				
1587+00	TO	1588+29	258	129		32	139.7				
SUB-TOTAL			34,273	5,117	218	4,307	14,638.5			217	217
TOTAL			43,915				14,639			217	217

² INCLUDES SIDE ROAD OMISSIONS

MODEL: Default
FILE NAME: p:\pub\mroom.dwt\illinois.gov\PWDOT\Documents\DOT_Offices\Director_B\Projects\076K85\CADDData\CAD\Sheet\076K85-PM-Schedule.dgn

USER NAME = ruholids	DESIGNED -	REVISED -
	DRAWN -	REVISED -
PLOT SCALE = 100,0000' / in.	CHECKED -	REVISED -
PLOT DATE = 3/1/2021	DATE -	REVISED -

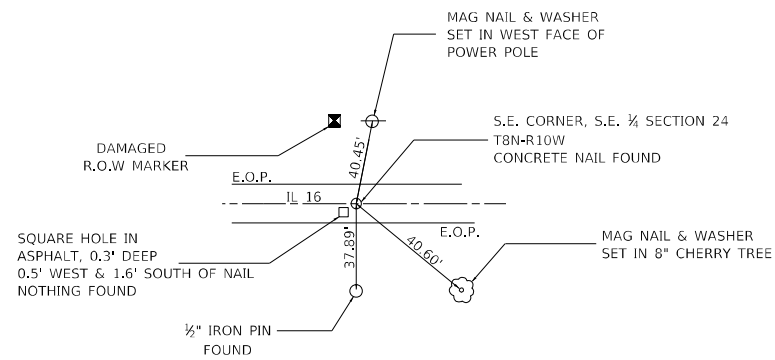
**STATE OF ILLINOIS
DEPARTMENT OF TRANSPORTATION**

SCHEDULES OF QUANTITIES

SCALE: SHEET 3 OF 3 SHEETS STA. TO STA.

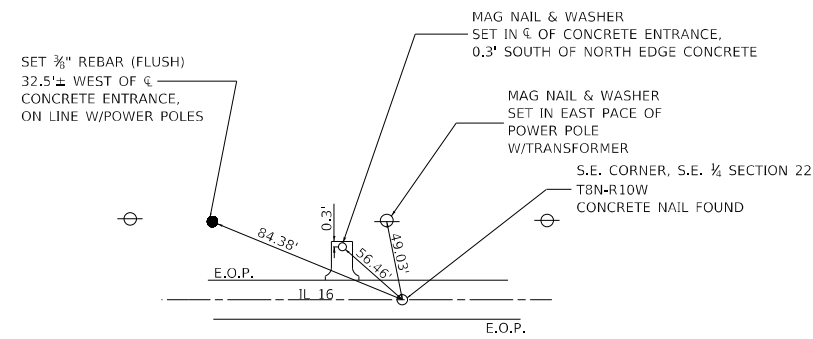
F.A.P. RTE.	SECTION	COUNTY	TOTAL SHEETS	SHEET NO.
325	113-1RS-2	JERSEY	11	8
CONTRACT NO. 76K85				
ILLINOIS FED. AID PROJECT				

SURVEY MONUMENT - 1



**SECTION 24 TWP 8N
RANGE 10W, 3RD P.M.
JERSEY COUNTY, IL**

SURVEY MONUMENT - 2



**SECTION 22 TWP 8N
RANGE 10W, 3RD P.M.
JERSEY COUNTY, IL**

SEE THE LOCATION MAP FOR THE APPROXIMATE SURVEY MONUMENT LOCATIONS

MODEL: Default
FILE NAME: p:\planningroom\dot\illinois\gov\PIWDOT\Documents\DOT_Offices\District 8\Projects\076K85\CADDData\CAD\Sheet\076K85-PI-02-03-IL.dgn

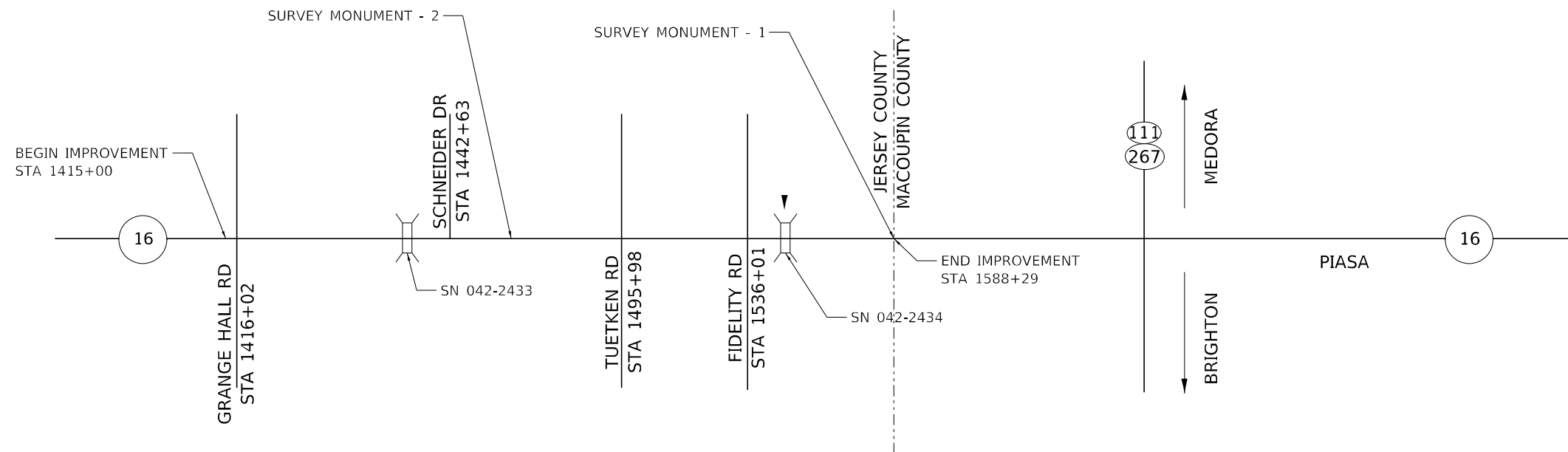
USER NAME = ruhollis	DESIGNED -	REVISED -
	DRAWN -	REVISED -
PLOT SCALE = 100,0000' / in.	CHECKED -	REVISED -
PLOT DATE = 3/1/2021	DATE -	REVISED -

**STATE OF ILLINOIS
DEPARTMENT OF TRANSPORTATION**

SURVEY TIES

SCALE: SHEET 1 OF 1 SHEETS STA. TO STA.

F.A.P RTE.	SECTION	COUNTY	TOTAL SHEETS	SHEET NO.
325	113-1RS-2	JERSEY	11	9
CONTRACT NO. 76K85				
ILLINOIS FED. AID PROJECT				



PAVEMENT CORING				
DESCRIPTION	STA.	LANE	OFFSET FROM EOP (FT)	EXISTING HMA THICKNESS (IN)
0.33 MI E OF GRANGE HALL RD	1433+25	CB	5.25	2.50
0.33 MI E OF GRANGE HALL RD	1433+25	WB	5.67	2.25
0.38 MI E OF SCHNEIDER DR	1462+47	EB	4.92	3.75
0.38 MI E OF SCHNEIDER DR	1462+47	WB	5.42	3.50
200 FT W OF TUETKEN DR	1493+98	EB	5.00	4.00
200 FT W OF TUETKEN DR	1493+98	WB	4.83	3.25
50 FT E OF OAD REST RD	1536+51	EB	4.42	14.50*
50 FT E OF OAD REST RD	1536+51	WB	6.17	4.00
540 FT W OF MACOUPIN CO LINE	1582+89	EB	5.83	4.25
540 FT W OF MACOUPIN CO LINE	1582+89	WB	4.92	4.75

*ASSUMED CORE WAS TAKEN IN AN EXISTING FULL-DEPTH HMA PATCH

MODEL: Default
 FILE NAME: p:\pub\mroom.dwt\illinois.gov\PIWDOT\Documents\DOT Office\Drawings\Projects\76K85\CADDData\CAD\Sheet\076K85-PI-10031.dgn

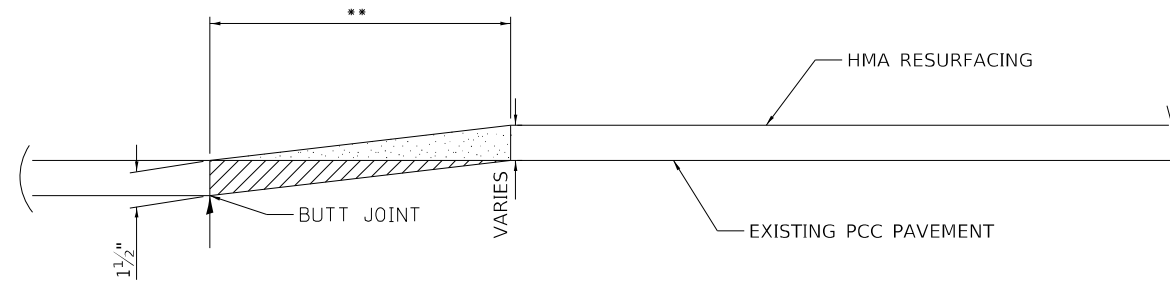
USER NAME = ruholids	DESIGNED -	REVISED -
	DRAWN -	REVISED -
PLOT SCALE = 100,0000' / in.	CHECKED -	REVISED -
PLOT DATE = 3/1/2021	DATE -	REVISED -

STATE OF ILLINOIS
DEPARTMENT OF TRANSPORTATION

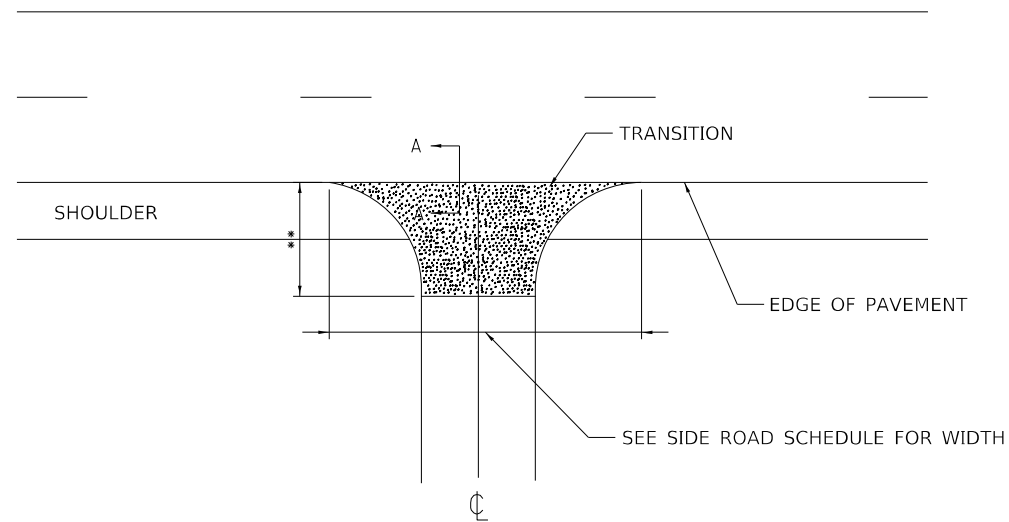
LOCATION MAP

SCALE: SHEET 1 OF 1 SHEETS STA. TO STA.

F.A.P. RTE.	SECTION	COUNTY	TOTAL SHEETS	SHEET NO.
325	113-1RS-2	JERSEY	11	10
CONTRACT NO. 76K85			ILLINOIS FED. AID PROJECT	



**TRANSITION DETAIL
SECTION A-A
BUTT-JOINT ADDITION**



SIDE ROAD DETAIL

NOTE ** SEE SIDE ROAD SCHEDULE FOR LENGTH

MODEL: Default
 FILE NAME: p:\planningroom.dwg
 PROJECT: 113-1RS-2
 OFFICE: JERSEY
 DATE: 3/1/2021

USER NAME = ruholids	DESIGNED -	REVISED -
	DRAWN -	REVISED -
PLOT SCALE = 100,0000' / in.	CHECKED -	REVISED -
PLOT DATE = 3/1/2021	DATE -	REVISED -

**STATE OF ILLINOIS
DEPARTMENT OF TRANSPORTATION**

RESURFACING DETAILS

SCALE: SHEET 1 OF 1 SHEETS STA. TO STA.

F.A.P. RTE.	SECTION	COUNTY	TOTAL SHEETS	SHEET NO.
325	113-1RS-2	JERSEY	11	11
CONTRACT NO. 76K85				
ILLINOIS FED. AID PROJECT				