

INDEX OF SHEETS

- 1 COVER SHEET
- 2 HIGHWAY STANDARDS, GENERAL NOTES, AND COMMITMENTS
- 3 SUMMARY OF QUANTITIES
- 4 TYPICAL SECTIONS
- 5-6 SCHEDULE OF QUANTITIES
- 7 LOCATION MAP
- 8-9 CLASS A PATCHING (SPECIAL)
- 10. SUGGESTED CHANGEABLE MESSAGE SIGN (CMS) LOCATIONS

FOR LIST OF HIGHWAY STANDARDS, SEE SHEET NO.2

TRAFFIC DATA

MILE STA. 0.00 TO MILE STA. 0.62

2019 ADT = 57700 (ACTUAL)
 2021 ADT = 58300 (ESTIMATED)
 2041 ADT = 64400 (ESTIMATED)
 SU=2.4% MU=7.3%

MILE STA. 0.62 TO MILE STA. 1.39

2019 ADT = 32500 (ACTUAL)
 2021 ADT = 32800 (ESTIMATED)
 2041 ADT = 36300 (ESTIMATED)
 SU=2.5% MU=6.5%

MILE STA. 1.39 TO MILE STA. 2.73

2019 ADT = 50600 (ACTUAL)
 2021 ADT = 51100 (ESTIMATED)
 2041 ADT = 56500 (ESTIMATED)
 SU=2.3% MU=8.1%

STATE OF ILLINOIS
DEPARTMENT OF TRANSPORTATION
PROPOSED
HIGHWAY PLANS

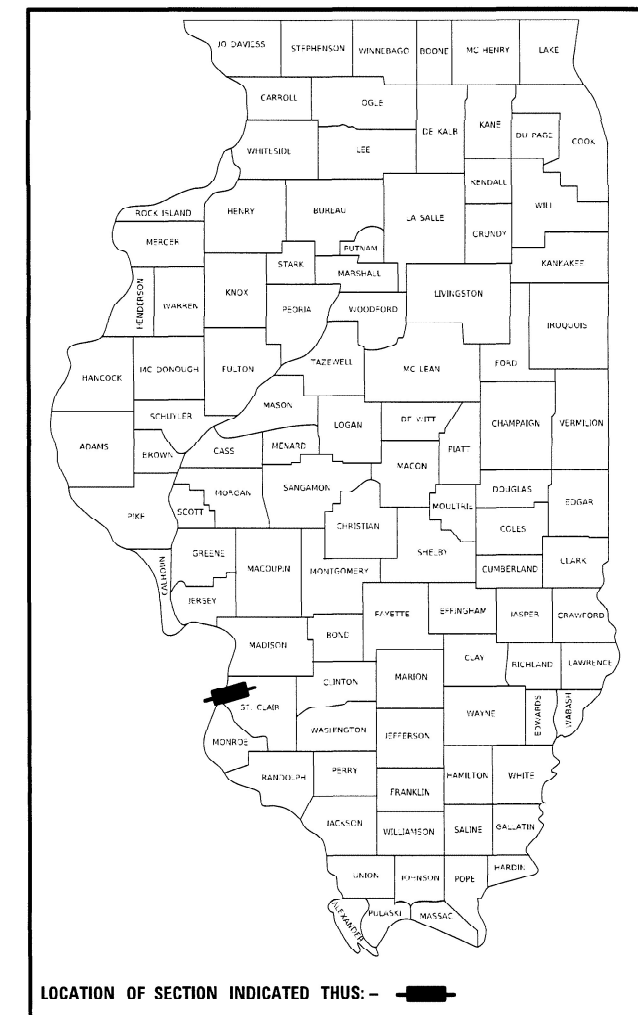
FAI ROUTE 70 (I-055/064/L 003)
SECTION 82-(1,2,3,4)PP-2

PATCHING
ST. CLAIR COUNTY

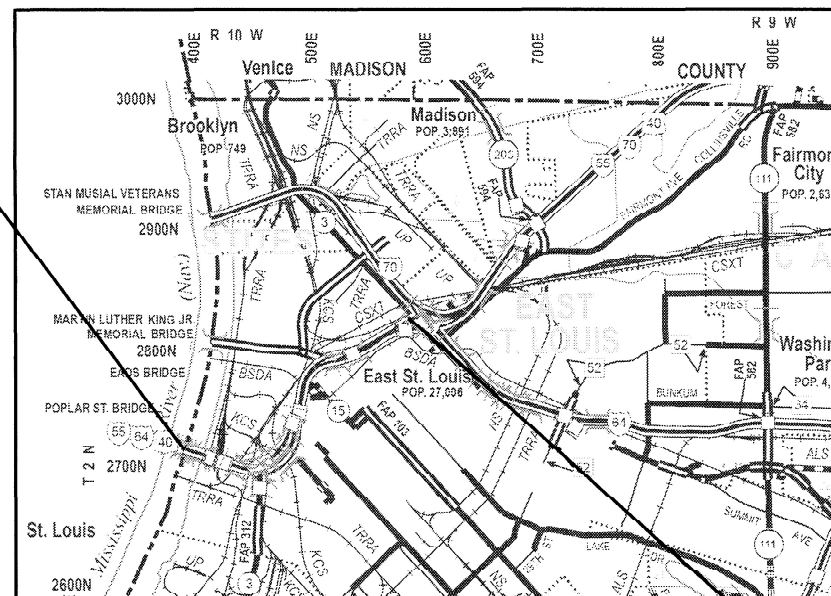
C-98-085-21

F.A.I. RTE.	SECTION	COUNTY	TOTAL SHEETS	SHEET NO.
70	82-(1,2,3,4)PP-2	ST. CLAIR	10	1
		ILLINOIS	CONTRACT NO. 76P49	

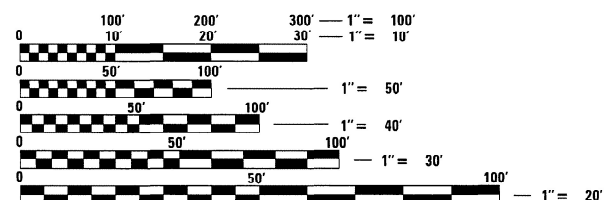
D-98-054-21



BEGIN IMPROVEMENT
 MILE STA. 0.00 MILES
 LAT: 38.617266°N
 LONG: -90.181759°W

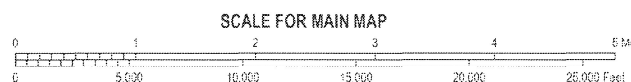


END IMPROVEMENT
 MILE STA. 2.73 MILES
 LAT: 38.633577°N
 LONG: -90.149480°E



FULL SIZE PLANS HAVE BEEN PREPARED USING STANDARD ENGINEERING SCALES. REDUCED SIZED PLANS WILL NOT CONFORM TO STANDARD SCALES. IN MAKING MEASUREMENTS ON REDUCED PLANS, THE ABOVE SCALES MAY BE USED.

J.U.L.I.E.
 JOINT UTILITY LOCATION INFORMATION FOR EXCAVATORS
 1-800-892-0123
 OR 811



GROSS LENGTH = 14,414.4 FEET = 2.73 MILES
 NET LENGTH = 14,414.4 FEET = 2.73 MILES

PROJECT ENGINEER: BILLIE OWEN (618) 346-3209
 PROJECT MANAGER: PHIL FREIMUTH (618) 346-3194

CONTRACT NO. 76P49

STATE OF ILLINOIS
 DEPARTMENT OF TRANSPORTATION

SUBMITTED *March 16, 2021*
Keith Roberts
 REGIONAL ENGINEER

May 7, 2021 *Joe E.A. Etk*
 ENGINEER OF DESIGN AND ENVIRONMENT

May 7, 2021 *James J. Jun*
 DIRECTOR OF HIGHWAYS PROJECT IMPLEMENTATION

**PRINTED BY THE AUTHORITY
 OF THE STATE OF ILLINOIS**

HIGHWAY STANDARDS

000001-08	STANDARD SYMBOLS, ABBREVIATIONS AND PATTERNS
001006	DECIMAL OF AN INCH AND OF A FOOT
001001-02	AREA OF REINFORCEMENT BARS
420001-09	PAVEMENT JOINTS
420701-03	PAVEMENT WELDED WIRE REINFORCEMENT
442001-04	CLASS A PATCHES
442101-09	CLASS B PATCHES
701400-10	APPROACH TO LANE CLOSURE, FREEWAY/EXPRESSWAY
701426-09	LANE CLOSURE, MULTILANE, INTERMITTENT OR MOVING OPERATIONS, FOR SPEEDS \geq 45 MPH
701428-01	TRAFFIC CONTROL SETUP AND REMOVAL FREEWAY/EXPRESSWAY
701446-11	TWO LANE CLOSURE, FREEWAY/EXPRESSWAY
701451-05	RAMP CLOSURE FREEWAY/EXPRESSWAY
701901-08	TRAFFIC CONTROL DEVICES
780001-05	TYPICAL PAVEMENT MARKINGS

GENERAL NOTES

1. UTILITIES KNOWN TO HAVE FACILITIES WITHIN THE PROJECT AREA ARE AS FOLLOWS:

UTILITY	TYPE	AERIAL	BURIED
AMEREN ILLINOIS	GAS & ELECTRIC	X	X
AT & T ILLINOIS	COMMUNICATIONS	X	X
CHARTER COMMUNICATIONS, INC.	CABLE TV	X	X
CITY OF EAST ST. LOUIS	LIGHTING	X	
EXPLORER PIPELINE COMPANY	PIPELINE		X
ILLINOIS AMERICAN WATER COMPANY	WATER		X
LEVEL 3 COMMUNICATIONS, LLC	COMMUNICATIONS	X	X
MCI NETWORK SERVICES, INC.	COMMUNICATIONS	X	X
MEDIACOM LLC CENTRAL	COMMUNICATIONS	X	X
METRO	UNKNOWN	X	X
METRO EAST SANITARY DISTRICT	SANITARY SEWER		X
SPIRE STL PIPELINE LLC	PIPELINE		X
WINDSTREAM KDL, INC.	COMMUNICATIONS	X	X

2. NO SURVEY WAS PERFORMED FOR THIS PROJECT. THE PLANS WERE CREATED USING MICROFILM AND FIELD MEASUREMENTS.
3. THE DEPARTMENT STRONGLY ENCOURAGES THE PRIME CONTRACTOR AND THEIR APPROVED SUB-CONTRACTORS TO HIRE MINORITY, WOMEN AND DISADVANTAGED INDIVIDUALS FROM ITS FEDERALLY FUNDED HIGHWAY CONSTRUCTION CAREERS TRAINING PROGRAM (HCCTP) TO HELP MEET WORKFORCE AND TRAINEE GOALS. THIS PROGRAM IS TRAINING MINORITIES, WOMEN AND DISADVANTAGED INDIVIDUALS IN HIGHWAY CONSTRUCTION-RELATED SKILLS, E.G., MATH FOR THE TRADES, JOB READINESS, TECHNICAL SKILLS COURSEWORK (CARPENTRY, CONCRETE FLATWORK, BLUEPRINT READING, SITE PLANS, SITE WORK, TOOLS USE, ETC.) AND OSHA 10 HOUR CERTIFICATION, TO PREPARE THEM FOR A CAREER IN THE HIGHWAY CONSTRUCTION TRADES. GRADUATES ARE WELL-TRAINED AND READY TO BECOME PRODUCTIVE ENTRY-LEVEL CONSTRUCTION WORKERS. CONTACT THE DISTRICT 8 EEO OFFICE AT 618-346-3360 AND/OR THE HCCTP COORDINATOR AT 618-874-6528 TO LEARN MORE ABOUT THE PROGRAM AND FOR ASSISTANCE IN MEETING WORKFORCE AND TRAINEE GOALS.
4. FOUR MESSAGE BOARDS SHALL BE REQUIRED FOR THIS PROJECT. THEY SHALL BE PLACED TWO WEEKS PRIOR TO ANY LANE CLOSURE AND REMAIN IN PLACE FOR THE DURATION OF THE CLOSURE. THE EXACT LOCATIONS SHALL BE DETERMINED BY THE ENGINEER.
5. ALL BRIDGES WITHIN PROJECT LIMITS SHALL BE OMITTED FROM PATCHING.
6. HIGH EARLY STRENGTH CONCRETE FOR PAVEMENT PATCHING WILL BE ALLOWED.
7. ALL PATCHES 100 FT. LONG OR MORE SHALL INCLUDE PROPOSED PAINT PAVEMENT MARKING, 4" WHITE AT THE EDGELINE AND CENTERLINE. PAINT PAVEMENT MARKING SHALL BE PAID FOR SEPARATELY AND IS NOT INCLUDED AS A PART OF THE PATCH. THE PLAN QUANTITY IS ESTIMATED TO BE 250 FT.

COMMITMENTS

NONE

REV. - MS

MODEL: Default
 FILE: M:\GIS\proj\plan\com.dwt\illinois.gov\ENR\DOT\Documents\DOT_Offices\District 8\Projects\0876949\CADD\Sheet\0876949-24-plan.dgn

USER NAME = Simam	DESIGNED -	REVISED -	STATE OF ILLINOIS DEPARTMENT OF TRANSPORTATION	HIGHWAY STANDARDS, GENERAL NOTES, & COMMITMENTS	F.A.I. RTE.	SECTION	COUNTY	TOTAL SHEETS	SHEET NO.	
PLOT SCALE = 100.0000' / in.	DRAWN -	REVISED -			70	82-(1,2,3,4)PP-2	ST. CLAIR	10	2	
PLOT DATE = 3/18/2021	CHECKED -	REVISED -			CONTRACT NO. 76P49					
	DATE -	REVISED -			ILLINOIS CM.PROJECT					
				SCALE:	SHEET 1 OF 1 SHEETS		STA.	TO STA.		

CODE NO.	ITEM	UNIT	100% STATE		CONSTR. CODE	
			TOTAL QUANTITY	ROADWAY		
				0006	URBAN	
4200060	WELDED WIRE REINFORCEMENT	SQ YD	382	382		
4420109	CLASS B PATCHES, TYPE II, 14 INCH	SQ YD	485	485		
44201023	CLASS B PATCHES, TYPE III, 14 INCH	SQ YD	83	83		
44201025	CLASS B PATCHES, TYPE IV, 14 INCH	SQ YD	299	299		
44201299	DOWEL BARS 1 1/2"	EACH	1288	1288		
44213000	PATCHING REINFORCEMENT	SQ YD	109	109		
44213200	SAW CUTS	FOOT	4309	4309		
44213204	TIE BARS 3/4"	EACH	329	329		
67100100	MOBILIZATION	L SUM	1	1		
70107025	CHANGEABLE MESSAGE SIGN	CAL DA	110	110		
70200100	NIGHTTIME WORK ZONE LIGHTING	L SUM	1	1		
* 78001110	PAINT PAVEMENT MARKING - LINE 4"	FOOT	250	250		
X0326808	INTERSTATE WEEKEND CLOSURE, SPECIAL	L SUM	1	1		
X4420621	CLASS A PATCHES, TYPE II, 14 INCH (SPECIAL)	SQ YD	91	91		

* SPECIALTY ITEM

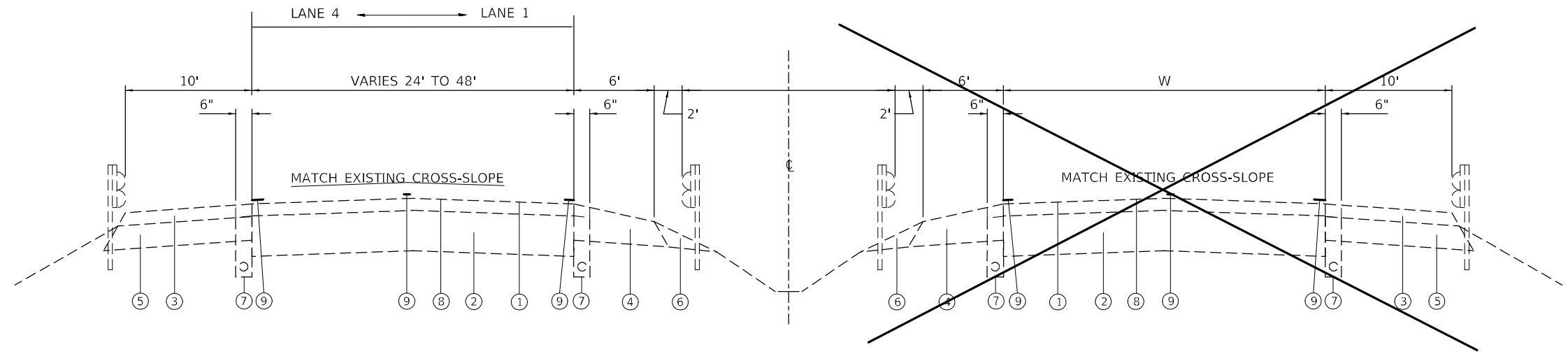
CODE NO.	ITEM	UNIT	100% STATE		CONSTR. CODE	
			TOTAL QUANTITY	ROADWAY		
				0006	URBAN	
Ø Z0076604	TRAINEES TRAINING PROGRAM GRADUATE	HOUR	500	500		
X4420624	CLASS A PATCHES, TYPE III, 14 INCH (SPECIAL)	SQ YD	18	18		

Ø 0042

MODEL: D:\default
 FILE: M:\asrc\proj\illinois\dot\illinois\proj\76P49\DOT\Documents\DOT_Offices\District_B\Projects\DOT\76P49\CADD\Drawings\CADD\76P49-24-plan.dgn

REV. - MS

USER NAME = Simam	DESIGNED -	REVISED -	STATE OF ILLINOIS DEPARTMENT OF TRANSPORTATION	SUMMARY OF QUANTITIES			F.A.I. RTE.	SECTION	COUNTY	TOTAL SHEETS	SHEET NO.	
PLOT SCALE = 100.0000' / in.	DRAWN -	REVISED -					70	82-(1,2,3,4)PP-2	ST. CLAIR	10	3	
PLOT DATE = 3/18/2021	CHECKED -	REVISED +		SCALE:	SHEET 1	OF 1	SHEETS	STA.	TO STA.	ILLINOIS FED. AID PROJECT		
	DATE -	REVISED +										



TYPICAL SECTION

ROADWAY SOUTHBOUND

* MILE STA 0.00 TO STA 2.05 (CRCC PAVEMENT 8")
 MILE STA 2.05 TO STA 2.73 (PCC PAVEMENT, 10" WITH FABRIC)

ROADWAY NORTHBOUND

NO WORK, FOR INFORMATION ONLY

LEGEND

- ① EXISTING BITUMINOUS CONCRETE SURFACE COURSE
- ② EXISTING CONCRETE PAVEMENT
- ③ EXISTING BITUMINOUS SHOULDERS 3 1/4"
- ④ EXISTING BITUMINOUS SHOULDERS 8"
- ⑤ EXISTING BITUMINOUS SHOULERS (VARIABLE DEPTH)
- ⑥ EXISTING AGGREGATE SHOULDER, TYPE B
- ⑦ EXISTING SUB-SURFACE DRAINS
- ⑧ EXISTING POLYMERIZED HOT-MIX ASPHALT SURFACE COURSE, STONE MATRIX ASPHALT, N80-2 1/2"
- ⑨ EXISTING PREFORMED PLASTIC PAVEMENT MARKING

MODEL: Default
 FILE NAME: \\paulhammon.dot.illinois.gov\PI\DOT\Documents\DOT_Offices\District 8\Projects\0876P49\CADD\DATA\CAD\Faces\0876P49.rvt;chp;plan.dgn

USER NAME = Slimam	DESIGNED -	REVISED -
	DRAWN -	REVISED -
PLOT SCALE = 100,0000 ' / in.	CHECKED -	REVISED -
PLOT DATE = 3/18/2021	DATE -	REVISED -

**STATE OF ILLINOIS
 DEPARTMENT OF TRANSPORTATION**

TYPICAL SECTIONS

SCALE: SHEET 1 OF 1 SHEETS STA. TO STA.

F.A.I. RTE.	SECTION	COUNTY	TOTAL SHEETS	SHEET NO.
70	82-(1,2,3,4)PP-2	ST. CLAIR	10	4
CONTRACT NO. 76P49			ILLINOIS FED. AID PROJECT	

FJLL DEPTH PATCHING SCHEDULE 14"										
LOCATION	LANE	LENGTH	WIDTH	CLASS B PATCH TYPE II	CLASS B PATCH TYPE III	CLASS B PATCH TYPE IV	DOWEL BARS 1 1/2 inch	TIE BARS 3/4"	WELDED WIRE REINFORCEMENT	SAWCUT
MILE STATION	SB	FOOT	FOOT	SQ YD	(SQYD)	SQ YD	(EACH)	(EACH)	(SQ YD)	(FOOT)
2.73	1	6	12	8			20			48.0
2.71	1	6	12	8			20			48.0
2.69	1	6	12	8			20			48.0
2.67	1	6	12	8			20			48.0
2.65	1	6	12	8			20			48.0
2.63	1	6	12	8			20			48.0
2.63	1	6	12	8			20			48.0
2.63	1	6	12	8			20			48.0
2.63	1	6	12	8			20			48.0
2.63	1	6	12	8			20			48.0
2.53	1	6	12	8			20			48.0
SUB-TOTAL				88	0	0	220	0	0	528
15% ALLOWANCE FOR FAILURE				13.2	0	0	33	0	0	79.2
TOTAL (A)				101	0	0	253	0	0	607

FJLL DEPTH PATCHING SCHEDULE 14"										
LOCATION	LANE	LENGTH	WIDTH	CLASS B PATCH TYPE II	CLASS B PATCH TYPE III	CLASS B PATCH TYPE IV	DOWEL BARS 1 1/2 inch	TIE BARS 3/4"	WELDED WIRE REINFORCEMENT	SAWCUT
MILE STATION	SB	FOOT	FOOT	SQ YD	(SQYD)	SQ YD	(EACH)	(EACH)	(SQ YD)	(FOOT)
2.73	2	6	12	8			20			48.0
2.65	2	6	12	8			20			48.0
2.43	2	8	12	11			20			52.0
2.43	2	12	12		16		20		16.0	60.0
2.43	2	6	12	8			20			48.0
2.33	2	6	12	8			20			48.0
2.33	2	20	12			27	20		26.7	76.0
2.23	2	6	12	8			20			48.0
2.23	2	6	12	8			20			48.0
2.23	2	6	12	8			20			48.0
SUB-TOTAL				67	16	27	200	0	43	524
15% ALLOWANCE FOR FAILURE				10.00	2.40	4.00	30.00	0.00	6.40	78.60
TOTAL (B)				77	18	31	230	0	49	603

FULL DEPTH PATCHING SCHEDULE 14"										
LOCATION	LANE	LENGTH	WIDTH	CLASS B PATCH TYPE II	CLASS B PATCH TYPE III	CLASS B PATCH TYPE IV	DOWEL BARS 1 1/2 inch	TIE BARS 3/4"	WELDED WIRE REINFORCEMENT	SAWCUT
MILE STATION	SB	FOOT	FOOT	SQ YD	(SQYD)	SQ YD	(EACH)	(EACH)	(SQ YD)	(FOOT)
2.73	3	8	12	11			20			52.0
2.71	3	8	12	11			20			52.0
2.69	3	6	12	8			20			48.0
2.69	3	15	12		20		20		20.0	66.0
2.67	3	100	12			133	20	33	133.3	236.0
2.65	3	6	12	8			20			48.0
2.65	3	10	12	13			20			56.0
2.63	3	8	12	11			20			52.0
2.63	3	8	12	11			20			52.0
2.63	3	6	12	8			20			48.0
2.63	3	6	12	8			20			48.0
2.23	3	6	12	8			20			48.0
SUB-TOTAL				96	20	133	240	33	153	806
15% ALLOWANCE FOR FAILURE				14.40	3.00	20.00	36.00	4.95	23.00	120.90
TOTAL (C)				110	23	153	276	38	176	927

MODEL: Default
 FILE NAME: \\paulhammon.dia.illinois.gov\PWD\DOT\Documents\DOT_Offices\District 8\Projects\0876949\CADD\DATA\CAD\Faces\0876949\crt_eban.dgn

USER NAME = Slimam	DESIGNED -	REVISED -
	DRAWN -	REVISED -
PLOT SCALE = 100,0000' / in.	CHECKED -	REVISED -
PLOT DATE = 3/18/2021	DATE -	REVISED -

**STATE OF ILLINOIS
DEPARTMENT OF TRANSPORTATION**

SCHEDULE OF QUANTITIES

SCALE: SHEET 1 OF 2 SHEETS STA. TO STA.

F.A.I. RTE.	SECTION	COUNTY	TOTAL SHEETS	SHEET NO.
70	82-(1,2,3,4)PP-2	ST. CLAIR	10	5
CONTRACT NO. 76P49			ILLINOIS FED. AID PROJECT	

FULL DEPTH PATCHING SCHEDULE 14"										
LOCATION	LANE	LENGTH	WIDTH	CLASS B PATCH TYPE II	CLASS B PATCH TYPE III	CLASS B PATCH TYPE IV	DOWEL BARS 1 1/2 inch	TIE BARS 3/4"	WELDED WIRE REINFORCEMENT	SAWCUT
MILE STATION	SB	FOOT	FOOT	SQ YD	(SQYD)	SQ YD	(EACH)	(EACH)	(SQ YD)	(FOOT)
2.73	4	6	12	8			20			48.0
2.71	4	6	12	8			20			48.0
2.71	4	15	12		20		20		20.0	66.0
2.70	4	6	12	8			20			48.0
2.69	4	6	12	8			20			48.0
2.67	4	10	12	13			20			56.0
2.67	4	8	12	11			20			52.0
2.65	4	6	12	8			20			48.0
2.64	4	12	12		16		20		16.0	60.0
2.60	4	8	12	11			20			52.0
2.60	4	6	12	8			20			48.0
2.60	4	6	12	8			20			48.0
2.60	4	8	12	11			20			52.0
2.50	4	10	12	13			20			56.0
2.50	4	6	12	8			20			48.0
2.40	4	6	12	8			20			48.0
2.40	4	6	12	8			20			48.0
2.40	4	6	12	8			20			48.0
2.40	4	50	12			67	20	16	66.7	136.0
2.40	4	6	12	8			20			48.0
2.30	4	6	12	8			20			48.0
2.30	4	6	12	8			20			48.0
2.20	4	25	12			33	20	8	33.3	86.0
SUB-TOTAL				171	36	100	460	24	136	1288
15% ALLOWANCE FOR FAILURE				25.60	5.40	15.00	69.00	3.60	20.40	193.20
TOTAL (D)				196	41	115	529	28	156	1481

FULL DEPTH PATCHING SCHEDULE 14"									
LOCATION	LANE	LENGTH	WIDTH	CLASS A PATCHES, TYPE II, 14 INCH (SPEC IAL)	CLASS A PATCHES, TYPE III, 14 INCH (SPEC IAL)	PATCHING REINF.	TIE BARS 3/4"	SAWCUT	
MILE STATION	SB	FOOT	FOOT	SQ YD	SQ YD	SQ YD	EACH	FOOT	
2.03	3	6	12	8		8	24	60.0	
1.93	3	12	12		16	16	24	72.0	
SUB-TOTAL				8	16	24	48	132	
10% ALLOWANCE FOR FAILURE				0.8	1.6	2.4	4.75	13.2	
TOTAL (*)				9	18	26	52	145	

FULL DEPTH PATCHING SCHEDULE 14"									
LOCATION	LANE	LENGTH	WIDTH	CLASS A PATCHES, TYPE II, 14 INCH (SPEC IAL)	CLASS A PATCHES, TYPE III, 14 INCH (SPEC IAL)	PATCHING REINF.	TIE BARS 3/4"	SAWCUT	
MILE STATION	SB	FOOT	FOOT	SQ YD	(SQYD)	SQ YD	EACH	FOOT	
2	4	10	12	13		13	24	68.0	
2	4	6	12	8		8	24	60.0	
2	4	6	12	8		8	24	60.0	
2	4	6	12	8		8	24	60.0	
2	4	6	12	8		8	24	60.0	
1.9	4	8	12	11		11	24	64.0	
1.9	4	6	12	8		8	24	60.0	
1.9	4	8	12	11		11	24	64.0	
SUB-TOTAL				75	0	75	192	496	
10% ALLOWANCE FOR FAILURE				7.47	0.00	7.47	19.20	49.60	
TOTAL (**)				82	0	82	211	546	

FULL DEPTH PATCHING SCHEDULE 14"							
SUB TOALS	CLASS B PATCH TYPE II	CLASS B PATCH TYPE III	CLASS B PATCH TYPE IV	DOWEL BARS 1 1/2 inch	TIE BARS 3/4"	WELDED WIRE REINFORCEMENT	SAWCUT
	SQ YD	(SQYD)	SQ YD	(EACH)	(EACH)	(SQ YD)	(FOOT)
TOTAL (A)	101	0	0	253	0	0	607
TOTAL (B)	77	18	31	230	0	49	603
TOTAL (C)	110	23	153	276	38	176	927
TOTAL (D)	196	41	115	529	28	156	1481
GRAND TOTAL (A+B+C+D)	485	83	299	1288	66	382	3618

FULL DEPTH PATCHING SCHEDULE 14"					
SUB TOTALS	CLASS A PATCHES, TYPE II, 14 INCH (SPEC IAL)	CLASS A PATCHES, TYPE III, 14 INCH (SPEC IAL)	PATCHING REINF.	TIE BARS 3/4"	SAWCUT
	SQ YD	(SQYD)	SQ YD	EACH	FOOT
TOTAL (*)	9	18	26	52	145
TOTAL (**)	82	0	82	211	546
GRAND TOTAL	91	18	109	263	691

MODEL: Default
 FILE NAME: \\paulhammon.dia.illinois.gov\PIWDOT\Documents\DOT_Offices\District_8\Projects\0876949\CADD\DATA\CAD\Faces\0876949.rvt-0-Jan-2021

USER NAME = Slimam	DESIGNED -	REVISED -
	DRAWN -	REVISED -
PLOT SCALE = 100,0000' / in.	CHECKED -	REVISED -
PLOT DATE = 3/23/2021	DATE -	REVISED -

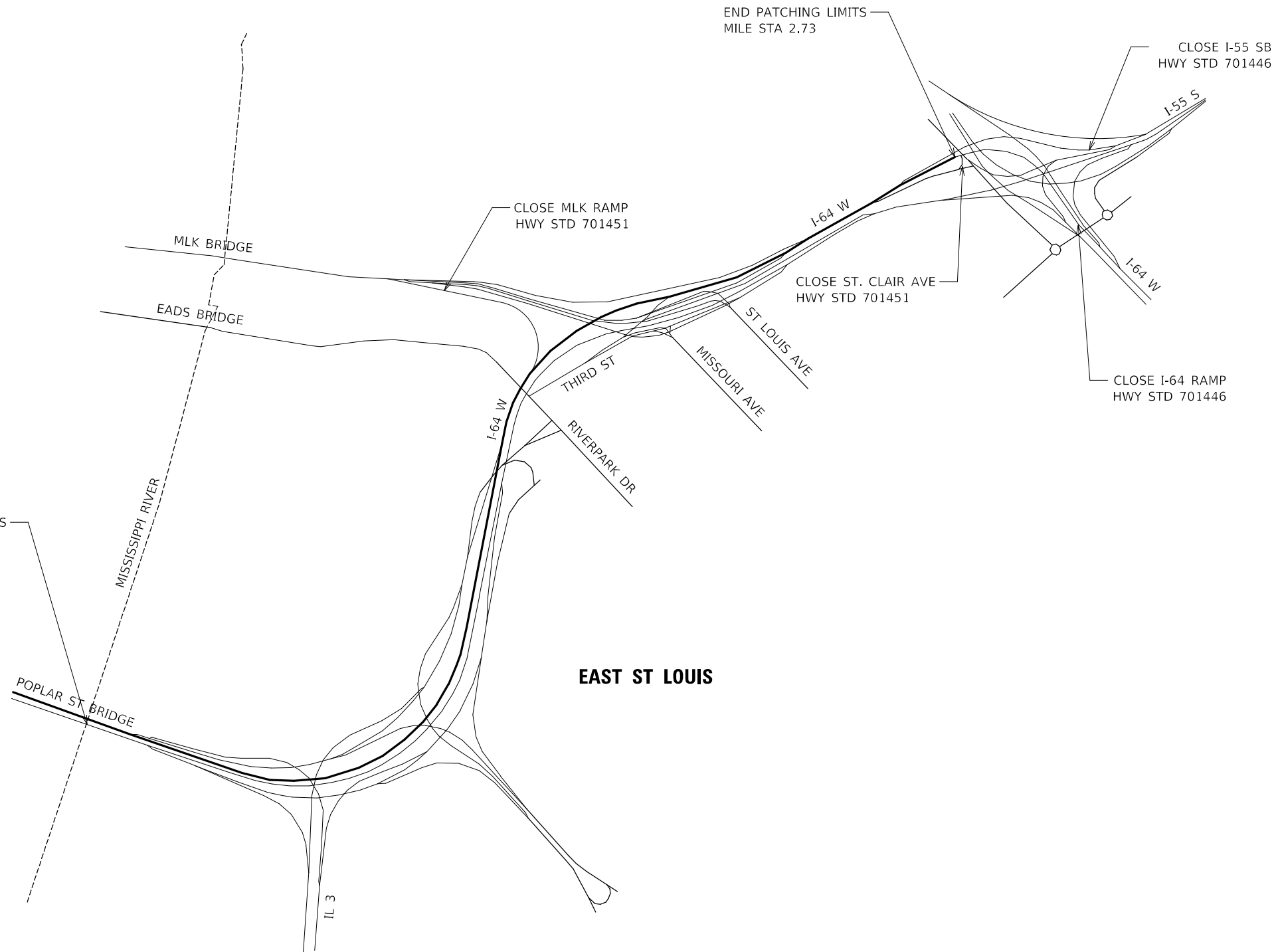
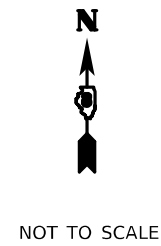
**STATE OF ILLINOIS
DEPARTMENT OF TRANSPORTATION**

SCHEDULE OF QUANTITIES

SCALE: SHEET 2 OF 2 SHEETS STA. TO STA.

F.A.1 RTE. 70	SECTION 82-(1,2,3,4)PP-2	COUNTY ST. CLAIR	TOTAL SHEETS 10	SHEET NO. 6
CONTRACT NO. 76P49			ILLINOIS FED. AID PROJECT	

NOTE:
HIGHWAY STANDARDS LISTED ARE SUGGESTED FOR THE
DIRECTIONAL WEEKEND CLOSURE.



MODEL: Default
 FILE NAME: p:\data\baronm.dwg
 PROJECT: I-55 SB HWY STD 701446
 OFFICE: District 8
 DATE: 3/18/2021

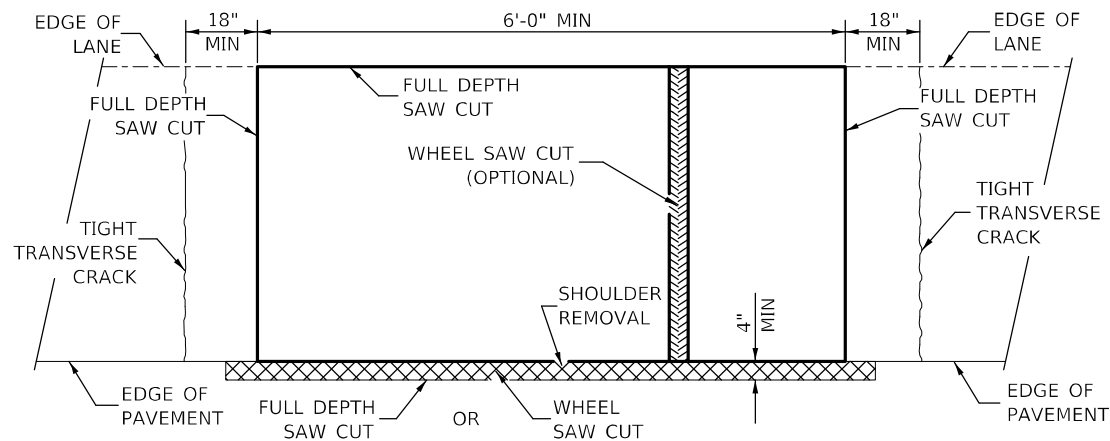
USER NAME = Slimm	DESIGNED -	REVISED -
	DRAWN -	REVISED -
PLOT SCALE = 100,000' / in.	CHECKED -	REVISED -
PLOT DATE = 3/18/2021	DATE -	REVISED -

**STATE OF ILLINOIS
DEPARTMENT OF TRANSPORTATION**

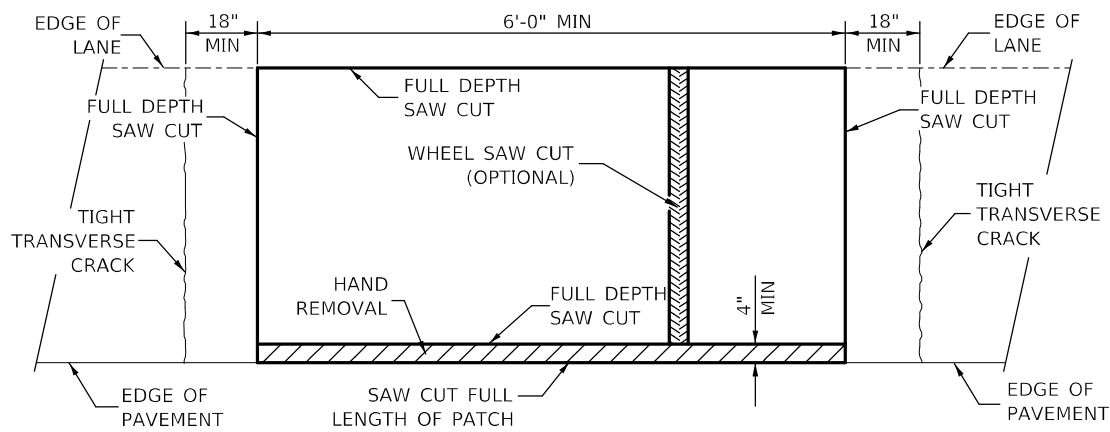
**LOCATION MAP
I-055064/L 003**

SCALE: SHEET 1 OF 1 SHEETS STA. TO STA.

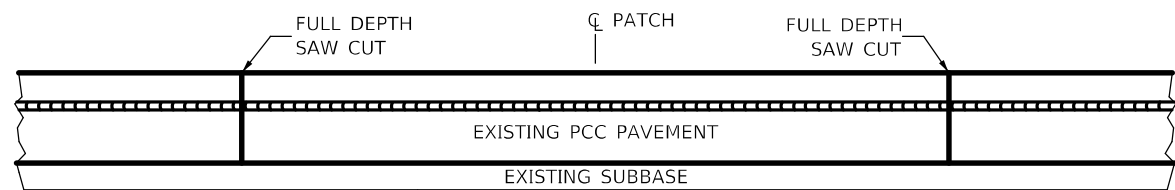
F.A.I. RTE.	SECTION	COUNTY	TOTAL SHEETS	SHEET NO.
70	82-(1,2,3,4)PP-2	ST. CLAIR	10	7
CONTRACT NO. 76P49			ILLINOIS CM. AID PROJECT	



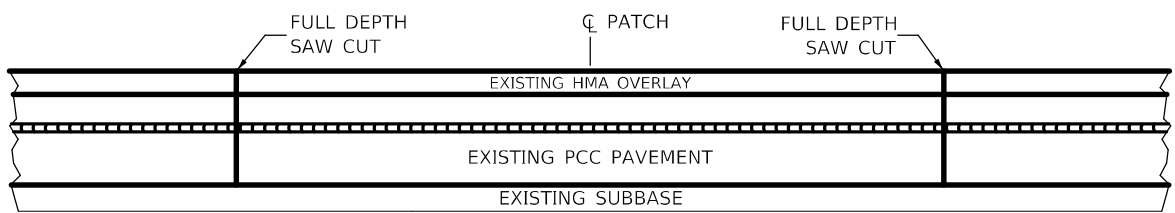
**PAVEMENT SAWING DETAIL
(HMA SHOULDER)**



**PAVEMENT SAWING DETAIL
(PCC SHOULDER)**

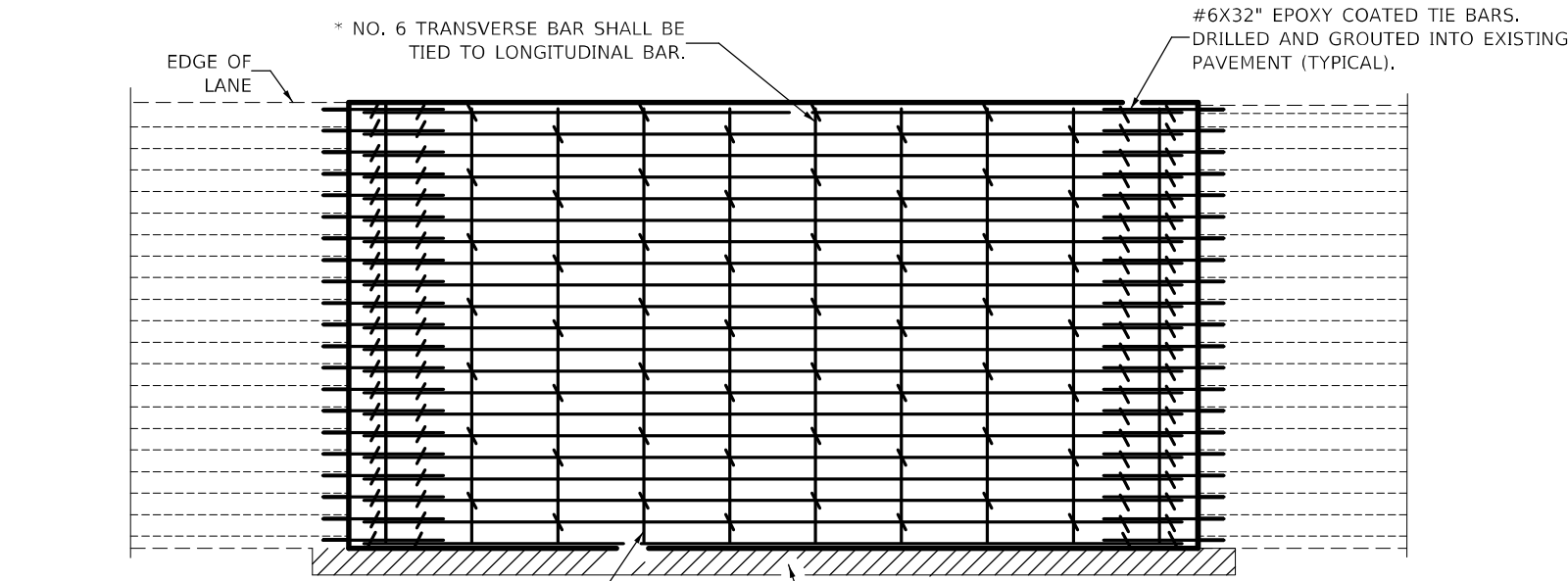


EXISTING PAVEMENT WITHOUT HMA SURFACE

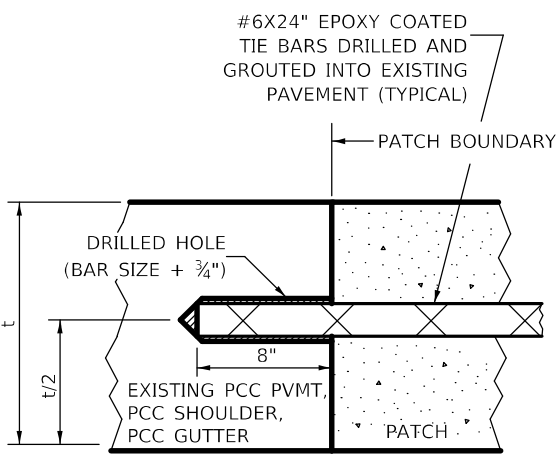


EXISTING PAVEMENT WITH HMA SURFACE

**PAVEMENT SAWING DETAIL FOR CLASS A PATCHING
(CRC PAVEMENT)**



PAVEMENT REINFORCEMENT DETAIL



LONGITUDINAL CONSTRUCTION JOINT

PATCHES MORE THAN 20' IN LENGTH SHALL BE TIED TO ADJACENT PAVEMENT, PCC SHOULDERS OR PCC CURB AND GUTTER WITH #6x24" EPOXY COATED TIE BARS AT 24" CENTERS.

NOTES:

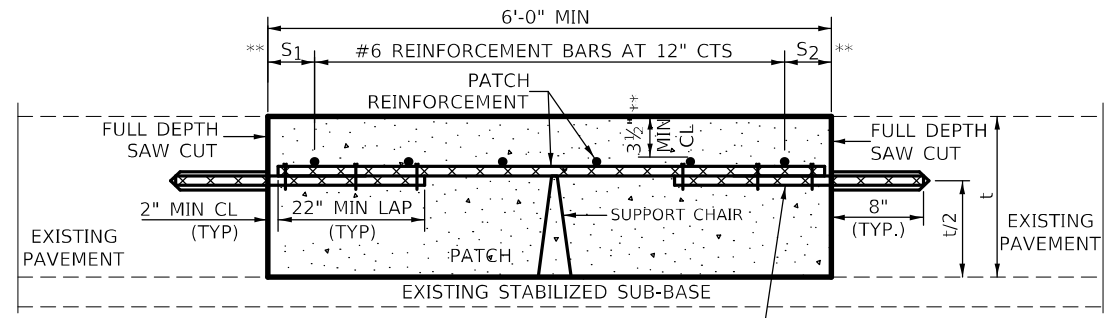
EXISTING LONGITUDINAL REINFORCEMENT SPACING; $\pm 6\frac{1}{2}$ ".

SPACING OF NEW LONGITUDINAL REINFORCEMENT AND NEW LONGITUDINAL TIE BARS SHALL MATCH SPACING OF EXISTING REINFORCEMENT AND SHALL BE TIED TOGETHER WITH A MINIMUM OF TWO TIES PER BAR.

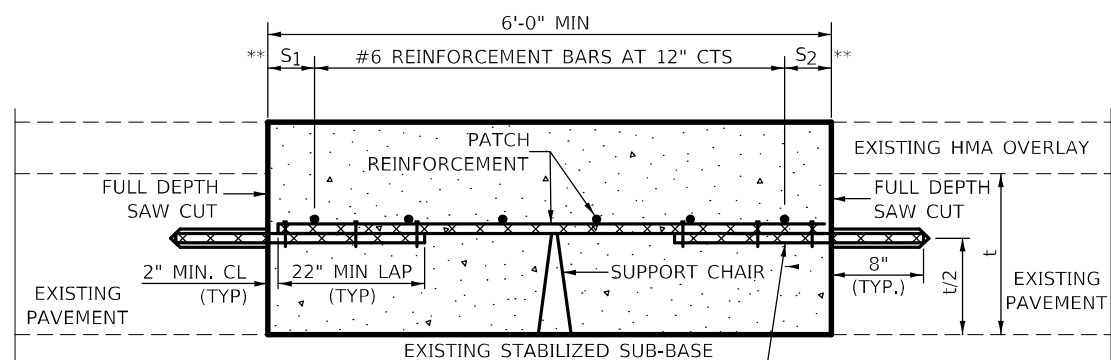
SUPPORT CHAIRS SHALL BE REQUIRED WHENEVER PATCH LENGTH EXCEEDS 6'-0"

* EVERY THIRD INTERSECTION MUST BE TIED. WHEN THE MINIMUM CLEARANCE CANNOT BE OBTAINED WITH THE TRANSVERSE REBAR ON TOP, THEN THE TRANSVERSE REBAR SHALL BE TIED TO THE BOTTOM OF THE LONGITUDINAL REBAR.

** VARIABLES WHERE S_1 AND S_2 ARE $2\frac{1}{2}$ " MIN. AND 12" MAX.



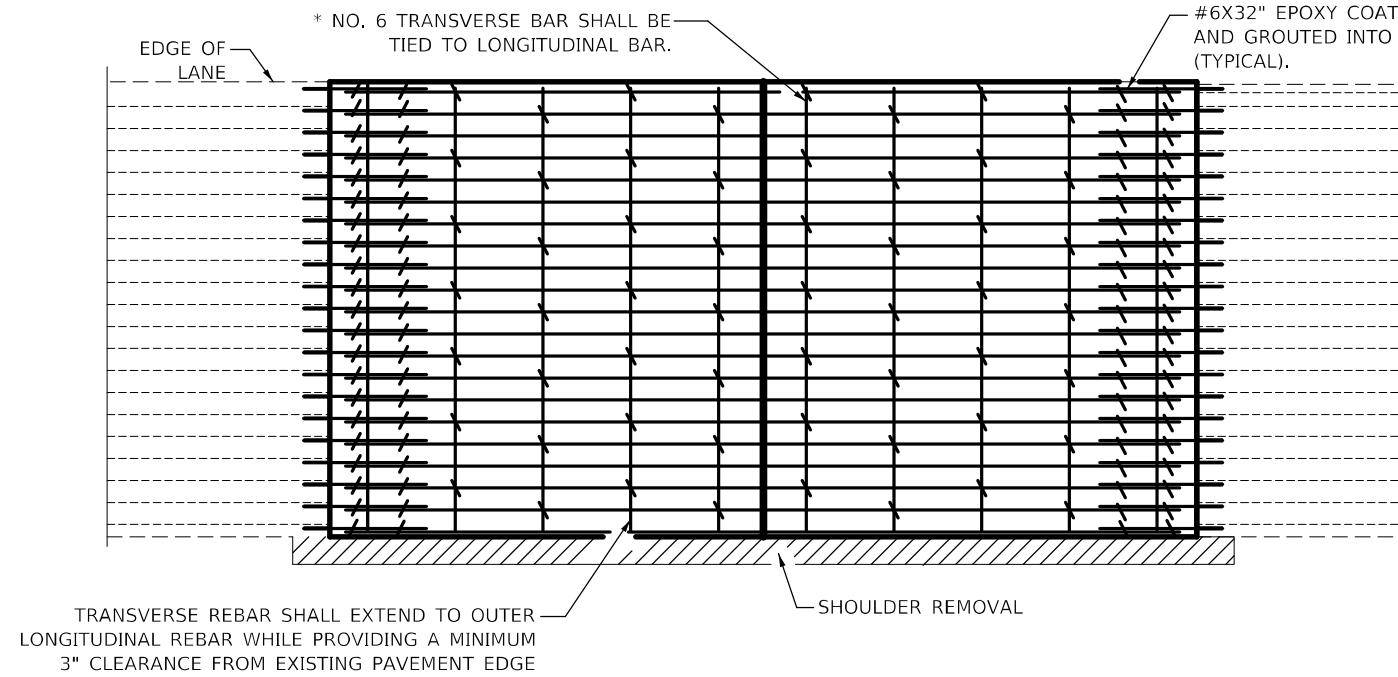
WITHOUT HMA OVERLAY



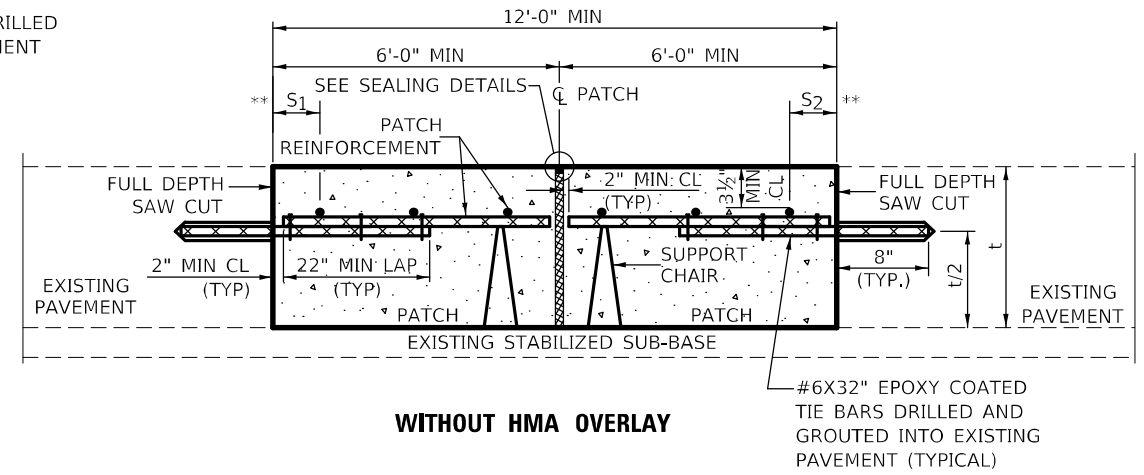
WITH HMA OVERLAY

**PATCHING DETAIL FOR CLASS A PATCHING
(CRC PAVEMENT)**

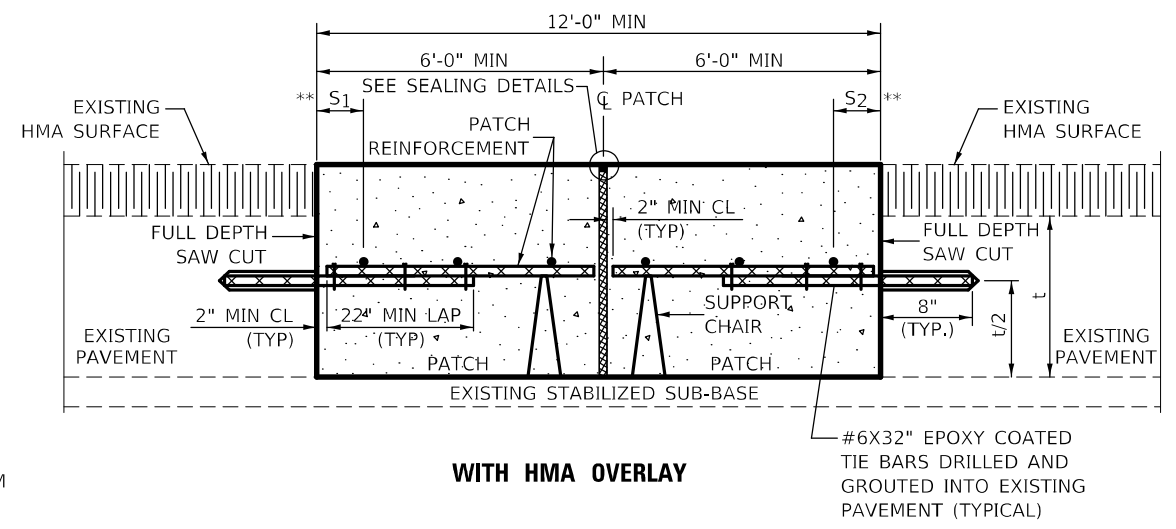
MODEL: Default
 FILE NAME: p:\data\mcrnon.dwg
 PLOT DATE: 3/18/2021
 PLOT SCALE: = 100,0015' / in.
 USER NAME: = Slimam
 DESIGNED -
 DRAWN -
 CHECKED -
 DATE -
 REVISED -
 REVISED -
 REVISED -
 REVISED -
 REVISED -
 REVISED -
 STATE OF ILLINOIS
 DEPARTMENT OF TRANSPORTATION
 CLASS A PATCHING (SPECIAL)
 SCALE: NONE SHEET 1 OF 2 SHEETS STA. TO STA.
 F.A.I. RTE. SECTION COUNTY TOTAL SHEETS SHEET NO.
 70 82-(1,2,3,4)PP-2 ST. CLAIR 10 8
 CONTRACT NO. 76P49
 ILLINOIS FED. AID PROJECT



PAVEMENT REINFORCEMENT DETAIL

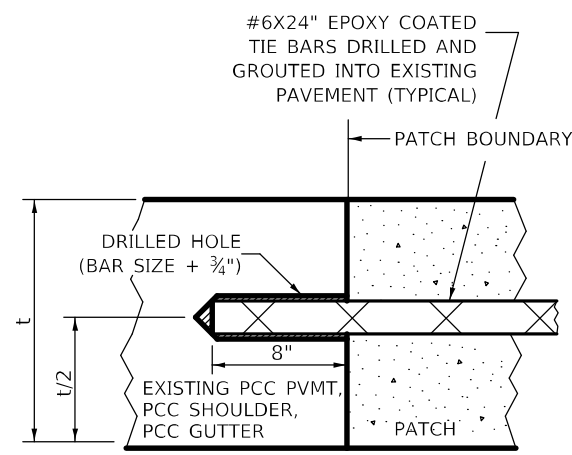


WITHOUT HMA OVERLAY



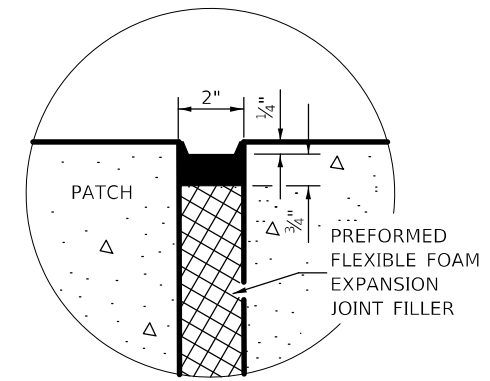
WITH HMA OVERLAY

CLASS A PATCH WITH EXPANSION JOINT

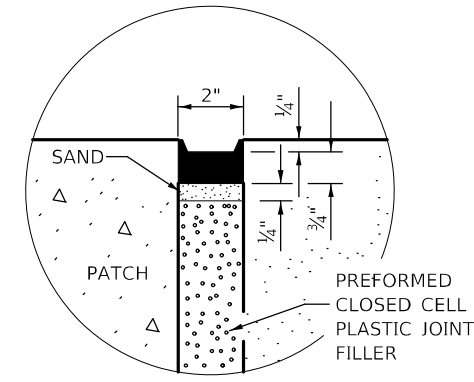


LONGITUDINAL CONSTRUCTION JOINT

PATCHES MORE THAN 20' IN LENGTH SHALL BE TIED TO ADJACENT PAVEMENT, PCC SHOULDERS OR PCC CURB AND GUTTER WITH #6x24" EPOXY COATED TIE BARS AT 36" CENTERS.



SEALING DETAIL



SEALING DETAIL

- NOTES:
- EXISTING LONGITUDINAL REINFORCEMENT SPACING; $\pm 6\frac{1}{2}$ ".
 - SPACING OF NEW LONGITUDINAL REINFORCEMENT AND NEW LONGITUDINAL TIE BARS SHALL MATCH SPACING OF EXISTING REINFORCEMENT AND SHALL BE TIED TOGETHER WITH A MINIMUM OF TWO TIES PER BAR.
 - SUPPORT CHAIRS SHALL BE REQUIRED WHENEVER PATCH LENGTH EXCEEDS 6'-0"
 - * EVERY THIRD INTERSECTION MUST BE TIED, WHEN THE MINIMUM CLEARANCE CANNOT BE OBTAINED WITH THE TRANSVERSE REBAR ON TOP, THEN THE TRANSVERSE REBAR SHALL BE TIED TO THE BOTTOM OF THE LONGITUDINAL REBAR.
 - ** VARIABLES WHERE S₁ AND S₂ ARE 2½" MIN. AND 12" MAX.

MODEL: Default
 FILE: M:\GIS\Projects\76P49\76P49.dwg
 PROJECT: 76P49 - PAVEMENT REPAIR AND RECONSTRUCTION
 DRAWN: J. S. [unreadable]
 CHECKED: [unreadable]
 DATE: 3/18/2021

USER NAME = Sliman	DESIGNED -	REVISED -
PLOT SCALE = 100,0015' / in.	DRAWN -	REVISED -
PLOT DATE = 3/18/2021	CHECKED -	REVISED -
	DATE -	REVISED -

STATE OF ILLINOIS
DEPARTMENT OF TRANSPORTATION

CLASS A PATCHING (SPECIAL)	
SCALE: NONE	SHEET 2 OF 2 SHEETS
STA. TO STA.	

F.A.I. RTE.	SECTION	COUNTY	TOTAL SHEETS	SHEET NO.
70	82-(1,2,3,4)PP-2	ST. CLAIR	10	9
CONTRACT NO. 76P49				
ILLINOIS FED. AID PROJECT				

MODEL: I:\MODELS\MRF5
FILE: MRF5_Plan\Maproom\dot\links\dot\Projects\076949\CAD\DATA\CAD\Final\DOT\Office\DIR\ref_8\Projects\076949\CAD\DATA\CAD\Final\DOT\Office\DIR\ref_8\Projects\076949\PH\DATA\ref_8.dwg



I-55 I-70 & I-270 BY TROY

PLACED PRIOR TO CLOSURE			1.	MLK BRIDGE EASTBOUND								
					2 WEEKS	2.	ST. CLAIR AVENUE SOUTHBOUND	3.	ST. CLAIR AVENUE NORTHBOUND	4.	I-55/I-70 SOUTHBOUND/WESTBOUND	5.
3 DAYS	6.	I-64 WESTBOUND	7.	I-55/I-70 SOUTHBOUND/WESTBOUND	8.	I-255 SOUTHBOUND	9.	I-70 WESTBOUND	10.	I-55 SOUTHBOUND	11.	I-64 WESTBOUND

SUGGESTED CMS LOCATIONS
CMS SHALL REMAIN IN PLACE FOR DURATION OF CLOSURE

USER NAME =	freimuchod	DESIGNED -	REVISIONS -
DRAWN -		REVISIONS -	
PLOT SCALE =	100,0000' / in.	CHECKED -	REVISIONS -
PLOT DATE =	3/16/2021	DATE -	REVISIONS -