

STATE OF ILLINOIS  
DEPARTMENT OF TRANSPORTATION

RTE.	SECTION	COUNTY	TOTAL SHEETS	SHEET NO.
D9	BRIDGE REPAIR 2021-2	ILLINOIS	7	1

\*FAS 2826 (IL 37) \*\*JEFFERSON  
- SBI 150C (OLD IL 3) ALEXANDER

D-99-022-21

FOR INDEX OF SHEETS, SEE SHEET NO. 3  
FOR SUMMARY OF QUANTITIES, SEE SHEET NO. 4

PROPOSED  
HIGHWAY PLANS

FAS 2826 (IL 37) /SBI 150C (OLD IL 3)  
SECTION D9 BRIDGE REPAIR 2021-2  
BRIDGE REPAIRS  
JEFFERSON /ALEXANDER COUNTY

TRAFFIC DATA

SN 041-0039 : 2019 ADT = 3,900  
5.1% TRUCKS

SN 002-0009 : 2017 ADT = 300  
12.7% TRUCKS

TOWNSHIP

SN 041-0039 ROME  
SN 002-0009 THEBES

COORDINATE SYSTEM : ILLINOIS COORDINATE SYSTEM, EAST ZONE  
POSTED SPEED : 55 MPH

J.U.L.I.E.  
JOINT UTILITY LOCATION INFORMATION FOR EXCAVATION  
1-800-892-0123  
OR 811

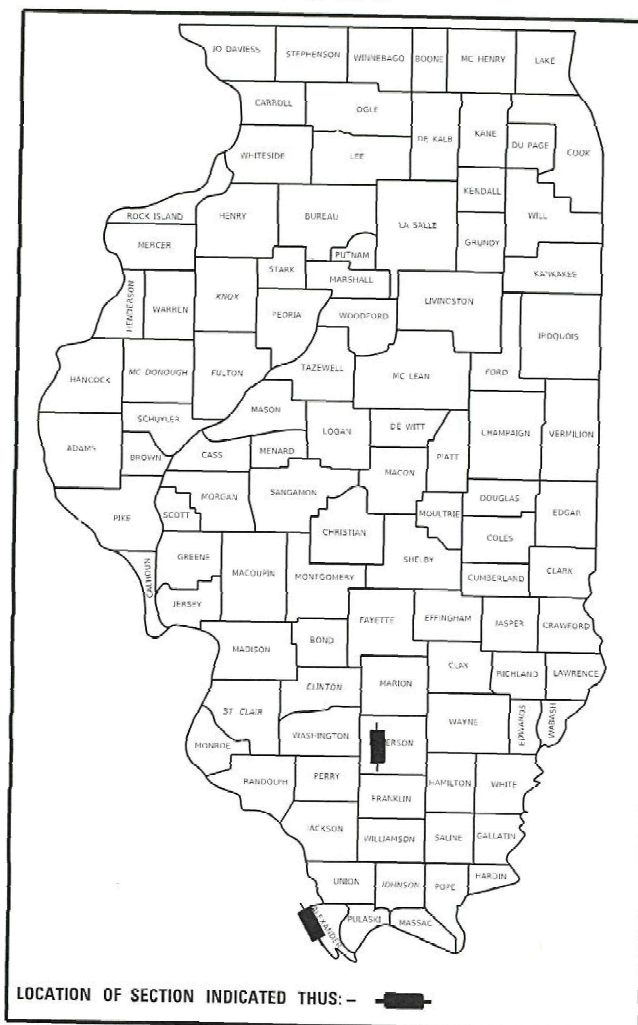
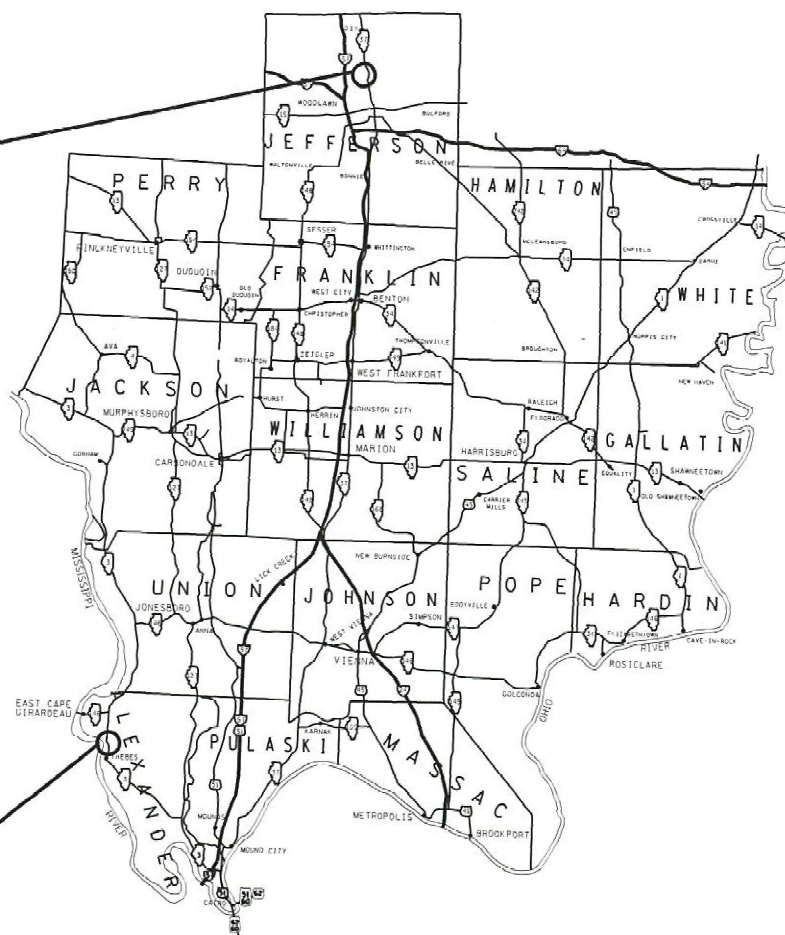
PROJECT ENGINEER: MIKE STEPHENSON  
PROJECT DESIGNER: NATHANIEL MORRIS

CONTRACT NO. 78846

C-99-030-21

SN 041-0039  
OVER SOUTHERN RAILROAD

SN 002-0009  
OVER SEXTON CREEK



STATE OF ILLINOIS  
DEPARTMENT OF TRANSPORTATION

SUBMITTED 03-15-2021  
*[Signature]*  
REGION FIVE ENGINEER

May 7, 2021 *[Signature]*  
ENGINEER OF DESIGN AND ENVIRONMENT

May 7, 2021 *[Signature]*  
DIRECTOR OF HIGHWAYS PROJECT IMPLEMENTATION

GROSS LENGTH = 492 FT. = 0.09 MILES  
NET LENGTH = 492 FT. = 0.09 MILES

PRINTED BY THE AUTHORITY  
OF THE STATE OF ILLINOIS

MODEL: D:\pwork\...  
 FILE NAME: ...

Prepared By: Charles Stein  
 DISTRICT STUDIES & PLANS ENGINEER

Examined By: Nancy Stein  
 DISTRICT LAND ACQUISITION ENGINEER

Examined By: Chris Miller  
 DISTRICT PROGRAM DEVELOPMENT ENGINEER

Examined By: Kurt Schlegel  
 DISTRICT OPERATIONS ENGINEER

Examined By: [Signature]  
 DISTRICT PROJECT IMPLEMENTATION ENGINEER

Examined By: Dan J. [Signature]  
 DISTRICT CONSTRUCTION ENGINEER

Examined By: [Signature]  
 DISTRICT MATERIALS ENGINEER

\*IL 37 (FAS 2826) \*\*JEFFERSON  
 OLD IL 3 (SBI 150C) ALEXANDER

USER NAME = WILSONDA	DESIGNED - ASH	REVISED - _____
DRAWN - ASH	CHECKED - MAS	REVISED - _____
PLOT SCALE = 100.0000' / in.	DATE - xx/xx/xxxx	REVISED - _____

**STATE OF ILLINOIS  
 DEPARTMENT OF TRANSPORTATION**

**SIGNATURE SHEET**

SCALE: \_\_\_\_\_ SHEET \_\_\_\_\_ OF \_\_\_\_\_ SHEETS STA. \_\_\_\_\_ TO STA. \_\_\_\_\_

RTE.	SECTION	COUNTY	TOTAL SHEETS	SHEET NO.
*	D9 BRIDGE REPAIR 2021-2	**	7	2
CONTRACT NO. 78846			ILLINOIS FED. AID PROJECT	

**INDEX OF SHEETS**

- 1. COVER SHEET
- 2. SIGNATURE SHEET
- 3. GENERAL NOTES, INDEX OF SHEETS, HIGHWAY STANDARDS
- 4. SUMMARY OF QUANTITIES
- 5. BRIDGE REPAIR PLANS 041-0039
- 6-7. BRIDGE REPAIR PLANS 002-0009

**GENERAL NOTES**

COMMITMENTS: NONE

**HIGHWAY STANDARDS**

- 000001-08 STANDARD SYMBOLS, ABBREVIATIONS, & PATTERNS
- 001001-02 AREAS OF REINFORCEMENT BARS
- 701001-02 OFF ROAD OPERATIONS 2L2W MORE THAN 15 FT FROM EOP
- 701006-05 OFF ROAD OPERATIONS 2L2W LESS THAN 15 FT FROM EOP
- 701201-05 LANE CLOSURE 2L2W DAY OPERATIONS ONLY
- 701901-08 TRAFFIC CONTROL DEVICES
- 001006 DECIMAL OF AN INCH AND OF A FOOT

REV. - MS

MODEL: Default  
 FILE NAME: p:\iplanroom.ddt\illinois.gov\PWIDOT\Documents\DOT Offices\District 9\Projects\78846\CAD\data\CAD\sheets\07\8846\Sheets.dgn

USER NAME = porterc	DESIGNED - ASH	REVISED - _____
	DRAWN - ASH	REVISED - _____
PLOT SCALE = 100.0000' / in.	CHECKED - MAS	REVISED - _____
PLOT DATE = 3/16/2021	DATE - xx/xx/xxxx	REVISED - _____

**STATE OF ILLINOIS  
DEPARTMENT OF TRANSPORTATION**

**INDEX OF SHEETS, GENERAL NOTES, STANDARDS**

SCALE: \_\_\_\_\_ SHEET \_\_\_\_ OF \_\_\_\_ SHEETS STA. \_\_\_\_\_ TO STA. \_\_\_\_\_

*FAS 2826 (IL 37)	**JEFFERSON			
SBI 150C (OLD IL 3)	ALEXANDER			
RTE.	SECTION	COUNTY	TOTAL SHEETS	SHEET NO.
*	D9 BRIDGE REPAIR 2021-2	**	7	3
			CONTRACT NO. 78846	
ILLINOIS FED. AID PROJECT				





**GENERAL NOTES**

All structural steel shall conform to AASHTO Classification M-270 Gr. 36, unless otherwise noted.

Plan dimensions and details relative to existing plans are subject to nominal construction variations. The Contractor shall field verify existing dimensions and details affecting new construction and make necessary approved adjustments prior to construction or ordering of materials. Such variations shall not be cause for additional compensation for a change in scope of the work, however, the Contractor will be paid for the quantity actually furnished at the unit price bid for the work.

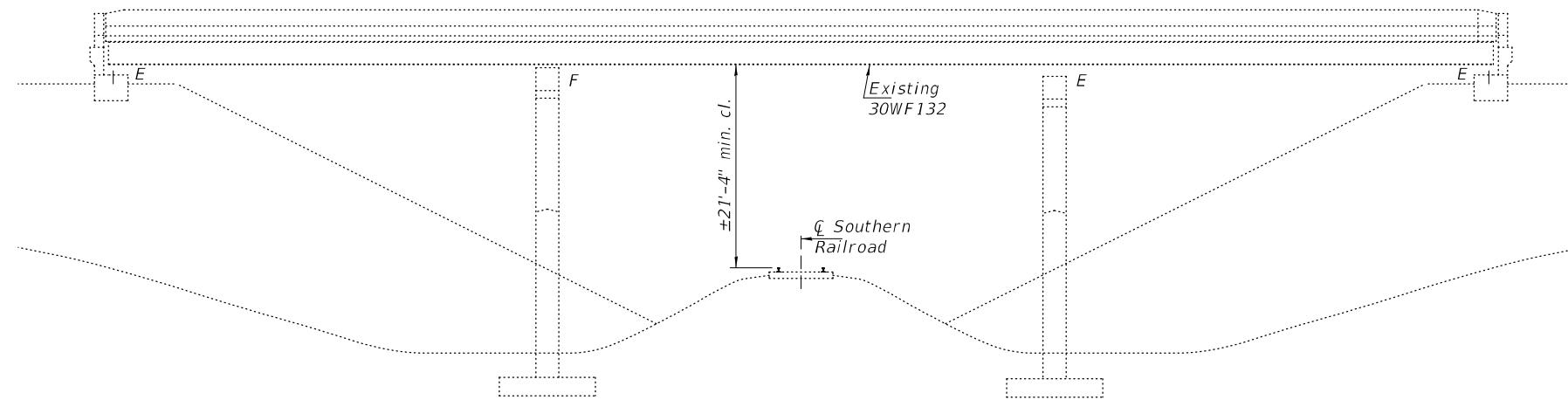
Diaphragm connection holes shall be  $1\frac{1}{16}$ "Ø for  $\frac{3}{4}$ "Ø bolts. Two hardened washers shall be required at diaphragm connections.

Cost of removal and re-installation of all members necessary to complete the work as detailed on the plans and as specified in the Special Provisions shall be included with Furnishing and Erecting Structural Steel.

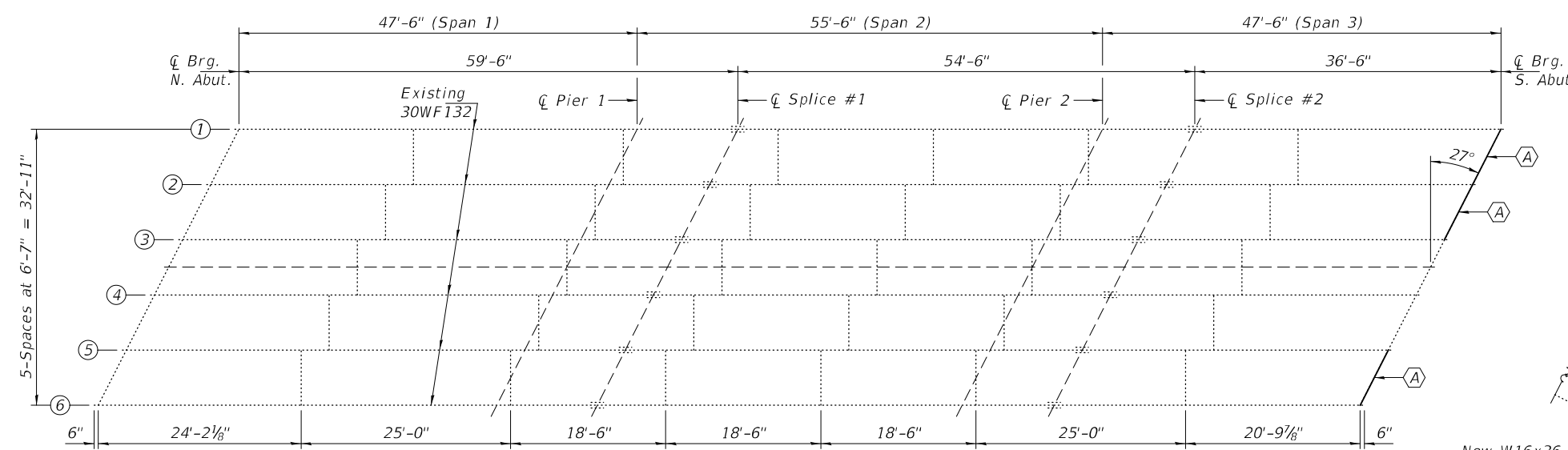
All new structural steel shall be hot-dip galvanized. See Special Provisions for "Hot Dip Galvanizing for Structural Steel."

Existing structural steel that will be in contact with new structural steel shall be cleaned and painted prior to erection as required by the special provision "Cleaning and Painting Contact Surface Areas of Existing Steel Structures".

After the new beam is in its final position, the Engineer in the field shall check to see that the top flange is tight against the slab. If not, the Contractor shall inject epoxy between the existing concrete deck and the top flange of the beam. See Special Provision "Epoxy Injection".

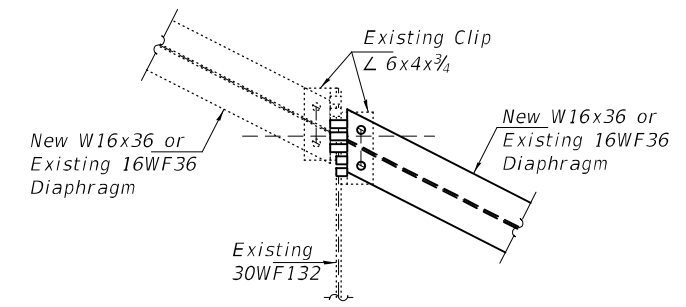


**ELEVATION**



**FRAMING PLAN**

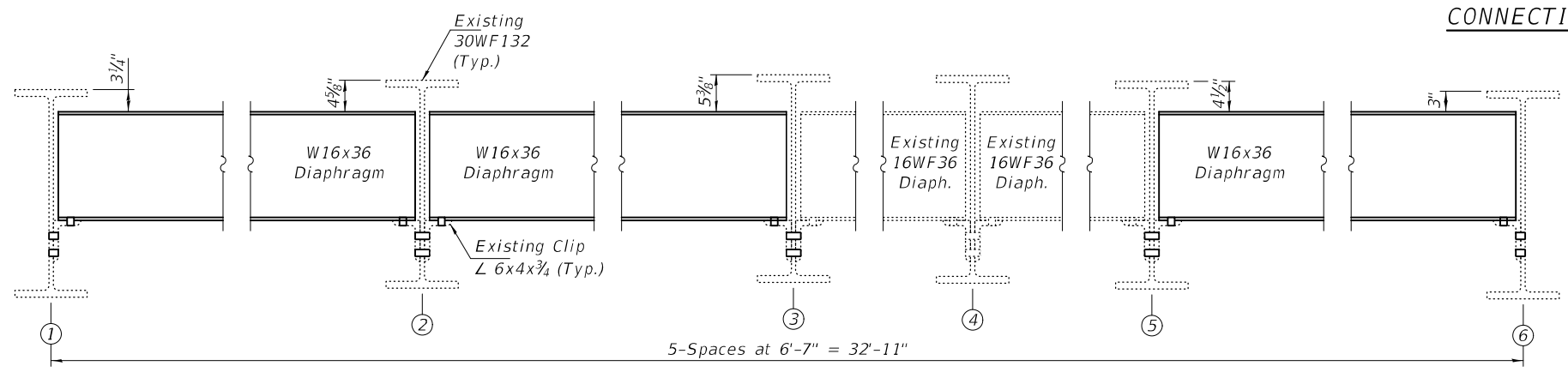
(A) - Remove & Replace End Diaphragm



**TYPICAL DIAPHRAGM CONNECTION**

**BOLT HOLE LEGEND**

○ - Field Drill holes in new steel using holes in existing steel as template.



**DIAPHRAGM REPLACEMENT AT SOUTH ABUTMENT**

W16x36 x 7'-6 1/2" (3-Required)

**TOTAL BILL OF MATERIAL**

ITEM	UNIT	QUANTITY
Structural Steel Removal	Pound	820
Furnishing & Erecting Structural Steel	Pound	850



Expires: November 30, 2022

DESIGNED - CHI-CHEUNG CHAU	EXAMINED - <i>Tring A. De...</i>	DATE - APRIL 22, 2021
CHECKED - STEPHEN M. RYAN	ENGINEER OF STRUCTURAL SERVICES	
DRAWN - STEFFEN	PASSED - <i>Dr. Carl Puzey</i>	REVISI...
CHECKED - CCC SMR	ENGINEER OF BRIDGES AND STRUCTURES	REVISI...

**STATE OF ILLINOIS  
DEPARTMENT OF TRANSPORTATION**

**FRAMING PLAN, ELEVATION & REPAIR DETAILS  
ILLINOIS ROUTE 37 OVER SOUTHERN RAILROAD  
SN 041-0039**

SHEET NO. 1 OF 1 SHEETS

F.A.S. RTE.	SECTION	COUNTY	TOTAL SHEETS	SHEET NO.
2826	D9 BRIDGE REPAIRS 2021-2	JEFFERSON	7	5
CONTRACT NO.				
ILLINOIS FED. AID PROJECT				

**GENERAL NOTES**

All structural steel shall conform to AASHTO Classification M-270 Gr. 36, unless otherwise noted.

Plan dimensions and details relative to existing plans are subject to nominal construction variations. The Contractor shall field verify existing dimensions and details affecting new construction and make necessary approved adjustments prior to construction or ordering of materials. Such variations shall not be cause for additional compensation for a change in scope of the work, however, the Contractor will be paid for the quantity actually furnished at the unit price bid for the work.

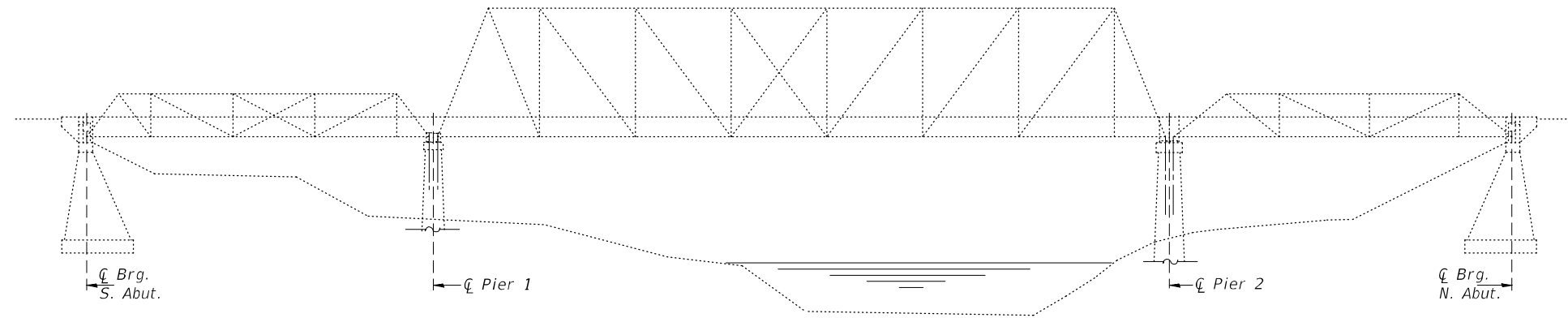
Fasteners shall be high strength bolts. Bolts  $\frac{3}{4}"\varnothing$ , open holes  $1\frac{1}{16}"\varnothing$ , unless otherwise noted.

Cost of removal and re-installation of all members necessary to complete the work as detailed on the plans and as specified in the Special Provisions shall be included with Structural Steel Repair.

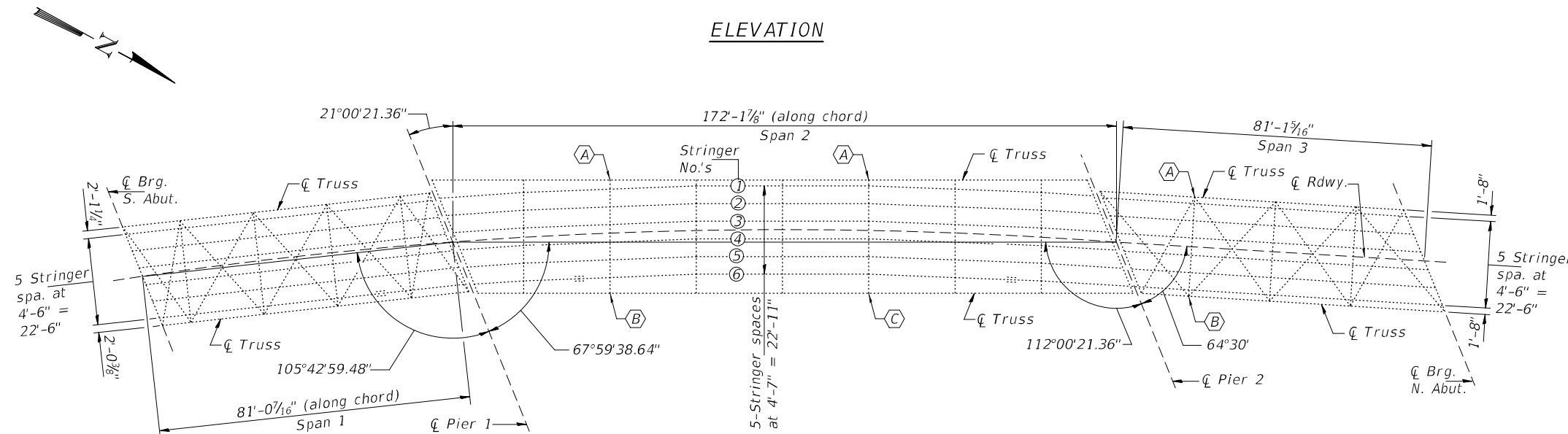
All new structural steel shall be hot-dipped galvanized. See Special Provisions for "Hot Dip Galvanizing for Structural Steel."

Cleaning & painting of all connections, unless otherwise noted, shall meet the requirements for Primary Connections as specified in the special provision for "Cleaning and Painting Contact Surface Areas of Existing Steel Structures".

Existing structural steel that will be in contact with new structural steel shall be cleaned and painted prior to erection as required by the special provision "Cleaning and Painting Contact Surface Areas of Existing Steel Structures".



**ELEVATION**



**FRAMING PLAN**

- (A) - Floor Beam Repair Detail "A"
- (B) - Floor Beam Repair Detail "B"
- (C) - Floor Beam Repair Detail "C"

**TOTAL BILL OF MATERIAL**

ITEM	UNIT	QUANTITY
Structural Steel Repair	Pound	3130



Expires: November 30, 2022

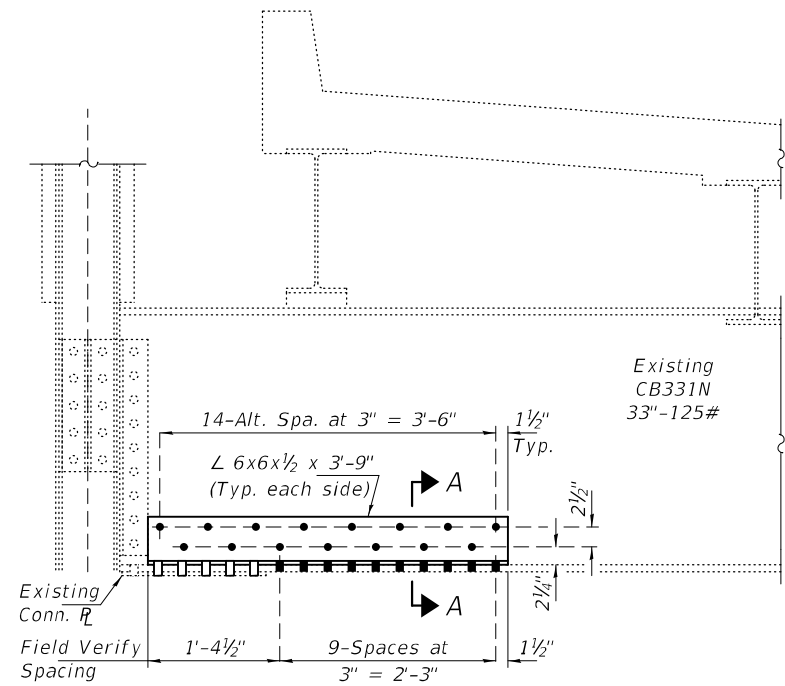
DESIGNED - CHI-CHEUNG CHAU	EXAMINED - <i>Tracy A. Beck</i>	DATE - APRIL 22, 2021
CHECKED - STEPHEN M. RYAN	ENGINEER OF STRUCTURAL SERVICES	
DRAWN - STEFFEN	PASSED - <i>Sh. Carl Puze</i>	REVISIED -
CHECKED - CCC SMR	ENGINEER OF BRIDGES AND STRUCTURES	REVISIED -

**STATE OF ILLINOIS  
DEPARTMENT OF TRANSPORTATION**

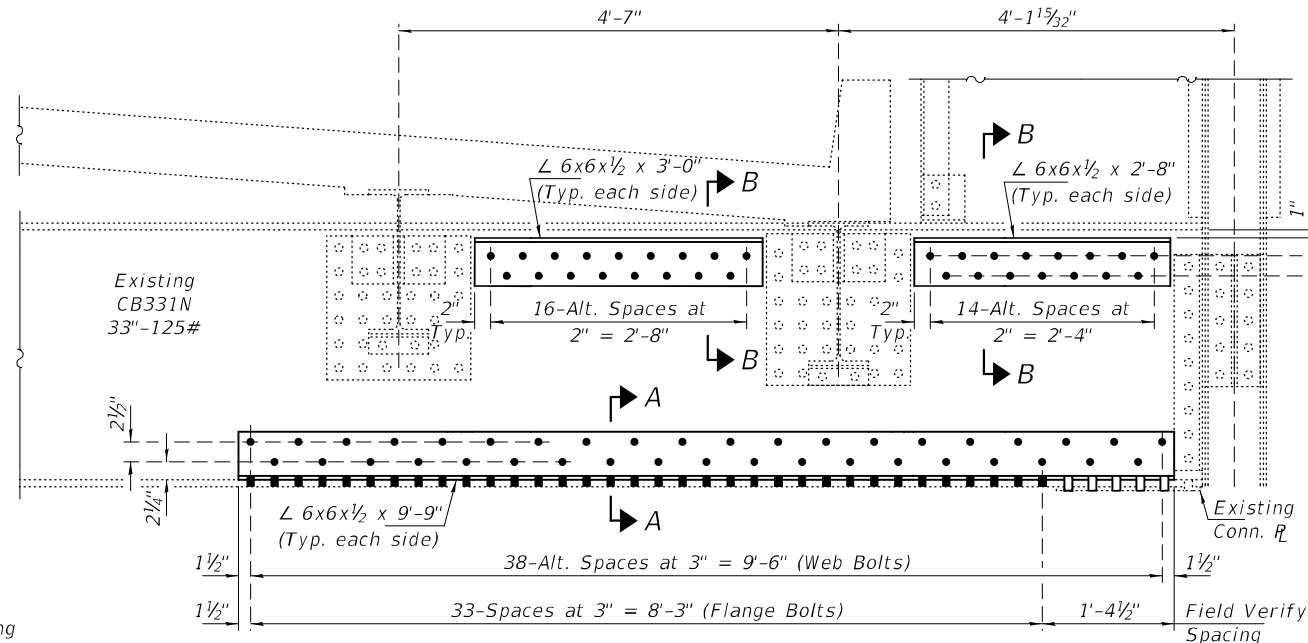
**FRAMING PLAN & ELEVATION  
OLD ILLINOIS ROUTE 3 OVER SEXTON CREEK  
SN 002-0009**

SHEET NO. 1 OF 2 SHEETS

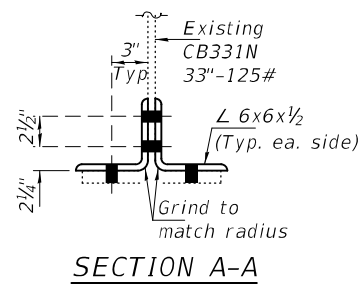
S.B.I. RTE.	SECTION	COUNTY	TOTAL SHEETS	SHEET NO.
150	D9 BRIDGE REPAIRS 2021-2	ALEXANDER	7	6
CONTRACT NO. 78846				
ILLINOIS FED. AID PROJECT				



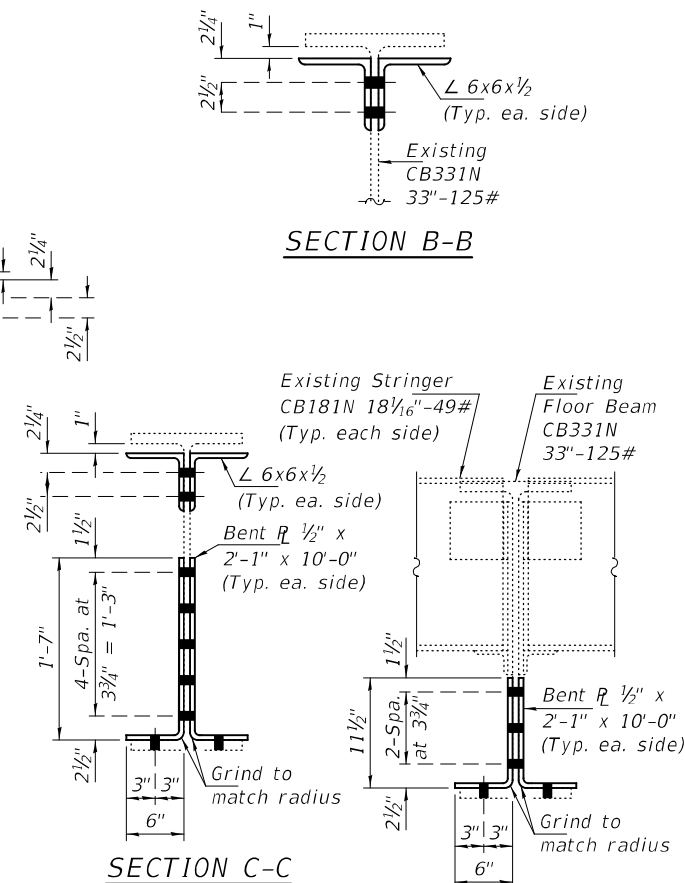
**REPAIR DETAIL "A"**  
(3-Locations)



**REPAIR DETAIL "B" AT SPAN 2, FLOOR BEAM 2**



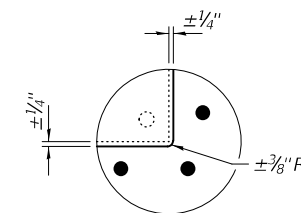
**SECTION A-A**



**SECTION B-B**

**SECTION C-C**

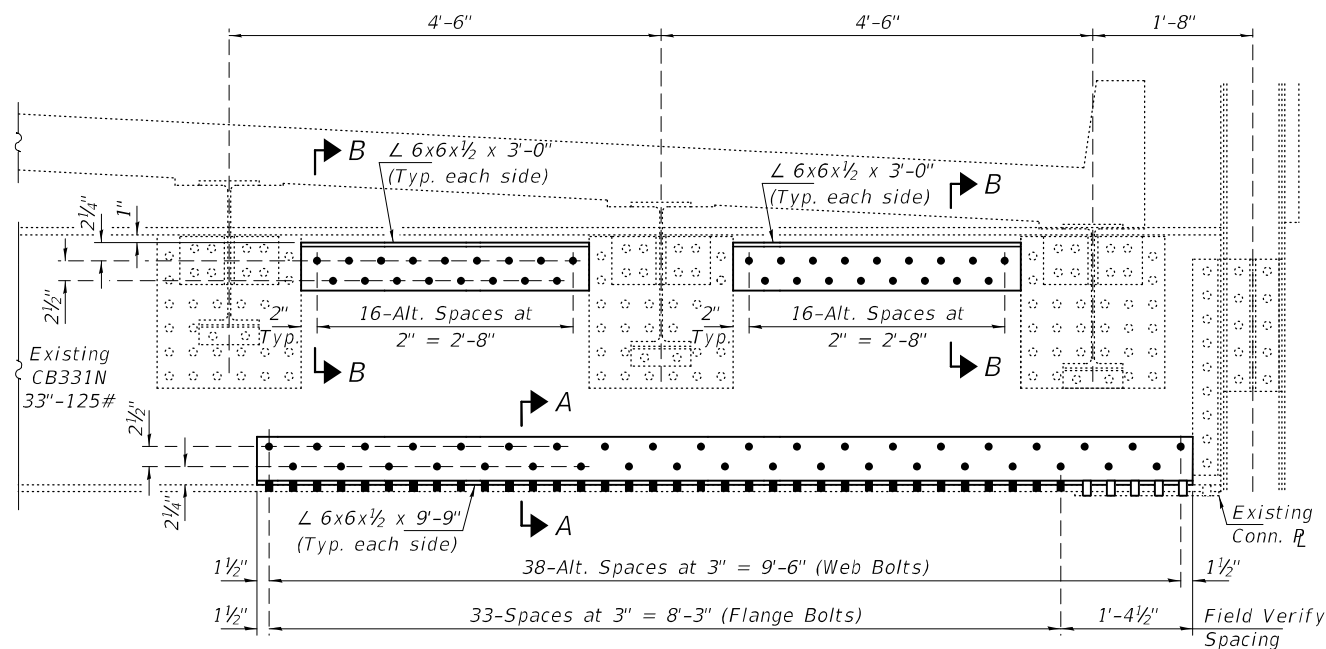
**SECTION D-D**



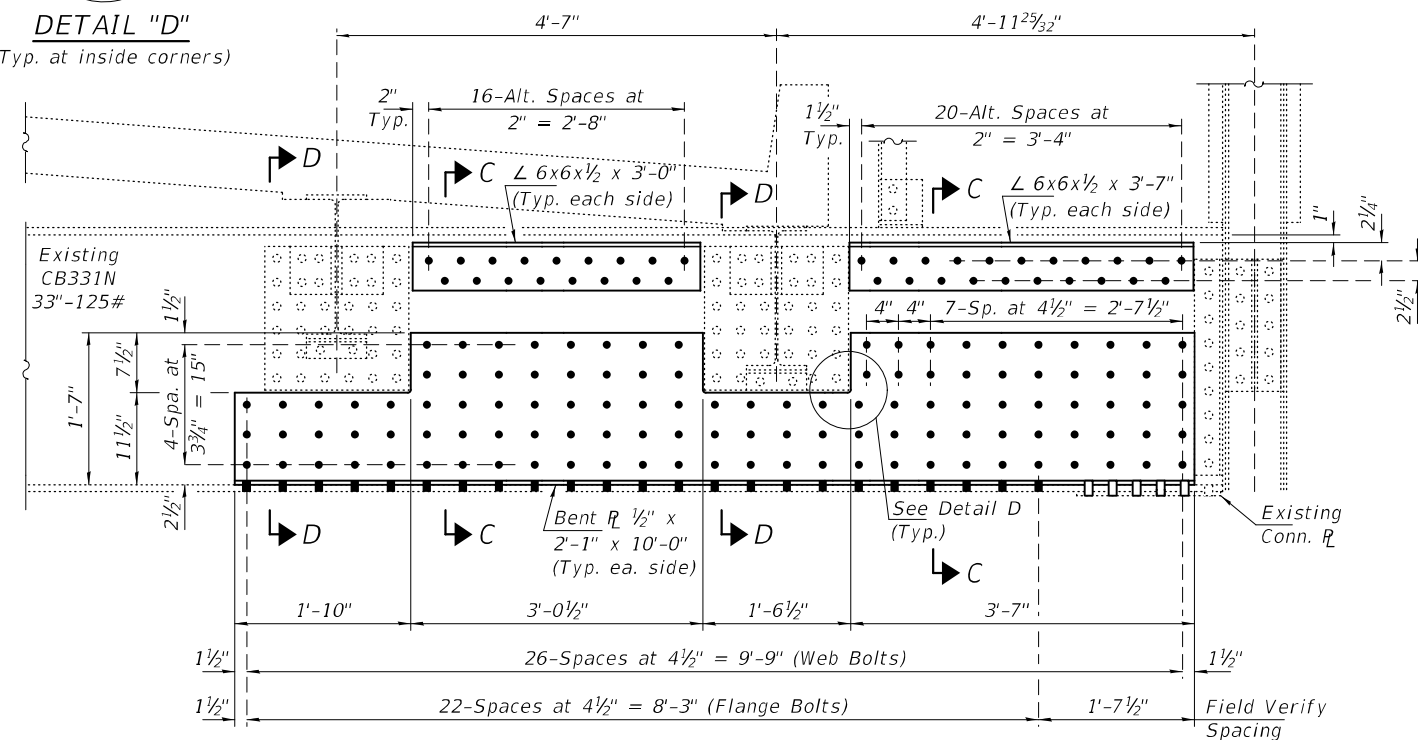
**DETAIL "D"**  
(Typ. at inside corners)

**BOLT HOLE LEGEND**

- - Field Drilled Holes
- - Shop Drilled Holes



**REPAIR DETAIL "B" AT SPAN 3, FLOOR BEAM 1**



**REPAIR DETAIL "C" AT SPAN 2, FLOOR BEAM 5**

DESIGNED - CCC	EXAMINED - <i>Timothy A. Daulton</i>	DATE - APRIL 22, 2021
CHECKED - SMR	ENGINEER OF STRUCTURAL SERVICES	
DRAWN - STEFFEN	PASSED - <i>Carl Ruyter</i>	REVISER -
CHECKED - CCC SMR	ENGINEER OF BRIDGES AND STRUCTURES	REVISER -

**STATE OF ILLINOIS**  
**DEPARTMENT OF TRANSPORTATION**

**FLOOR BEAM REPAIR DETAILS**  
**SN 002-0009**

SHEET NO. 2 OF 2 SHEETS

S.B.I. RTE.	SECTION	COUNTY	TOTAL SHEETS	SHEET NO.
150	D9 BRIDGE REPAIRS 2021-2	ALEXANDER	7	7
CONTRACT NO. 78846			ILLINOIS FED. AID PROJECT	