

STATE OF ILLINOIS
DEPARTMENT OF TRANSPORTATION

F.A.I. RTE.	SECTION	COUNTY	TOTAL SHEETS	SHEET NO.
64	(97-2-1) WS-1	WHITE	22	1
		ILLINOIS	CONTRACT NO. 78847	

FOR INDEX OF SHEETS, SEE SHEET NO. 3
FOR SUMMARY OF QUANTITIES, SEE SHEET NOS. 4-5

**PROPOSED
HIGHWAY PLANS**

F.A.I. ROUTE 64 (I-64)
SECTION (97-2-1) WS-1
PROJECT STP-VHRA(070)
VIRTUAL WEIGH STATION
WHITE COUNTY

C-99-031-21

TRAFFIC DATA

ROADWAY CLASSIFICATION = INTERSTATE
DESIGN SPEED = 70 MPH
CURRENT EB AND WB ADT (2019) = 12,700
SU = 3.4 %
MU = 36.4 %

TOWNSHIPS

GRAY

DESIGN DESIGNATION : N/A
COORDINATE SYSTEM : N/A
POSTED SPEED : 70 MPH



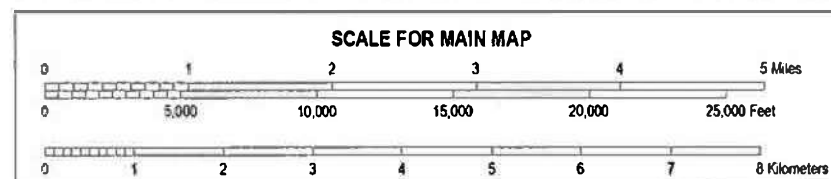
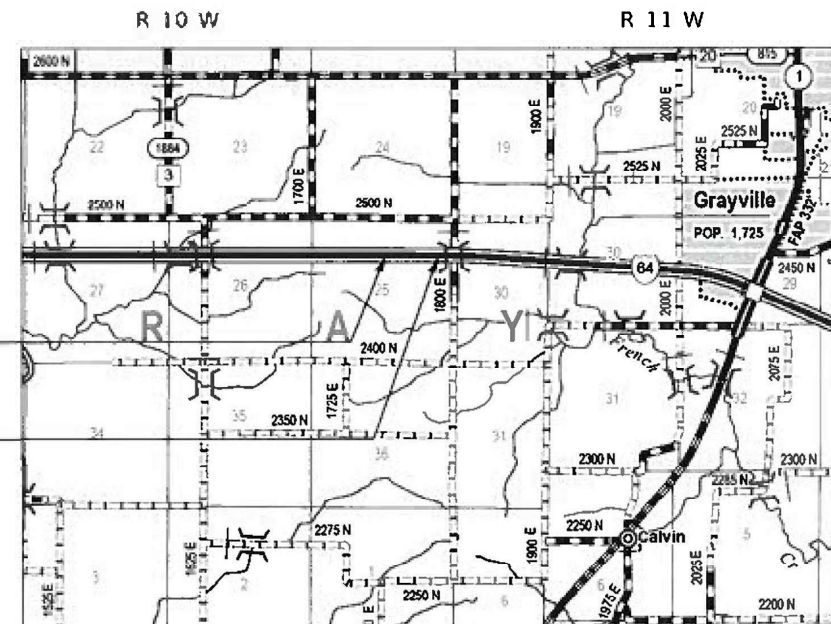
J.U.L.I.E.
JOINT UTILITY LOCATION INFORMATION FOR EXCAVATION
1-800-892-0123
OR 811

PROJECT ENGINEER: VALERIE ROLLA

CONTRACT NO. 78847



Franklin P. Eppert
Franklin P. Eppert, PE
Illinois 062-024057
Expires: 11-30-21
Date: 3/11/2021



GROSS LENGTH = 300.00 FT. = 0.057 MILES
NET LENGTH = 300.00 FT. = 0.057 MILES



STATE OF ILLINOIS
DEPARTMENT OF TRANSPORTATION

SUBMITTED 03-19-21
[Signature]
REGION FIVE ENGINEER

May 7, 2021
[Signature]
ENGINEER OF DESIGN AND ENVIRONMENT

May 7, 2021
[Signature]
DIRECTOR OF HIGHWAYS PROJECT IMPLEMENTATION 13

PRINTED BY THE AUTHORITY
OF THE STATE OF ILLINOIS

Prepared By: Charles Steiri
DISTRICT STUDIES & PLANS ENGINEER

Examined By: Nancy Lee
DISTRICT LAND ACQUISITION ENGINEER

Examined By: Carrie Nelson
DISTRICT PROGRAM DEVELOPMENT ENGINEER

Examined By: Kevin Kelly
DISTRICT OPERATIONS ENGINEER

Examined By: [Signature]
DISTRICT PROJECT IMPLEMENTATION ENGINEER

Examined By: Douglas [Signature]
DISTRICT CONSTRUCTION ENGINEER

Examined By: [Signature]
DISTRICT MATERIALS ENGINEER

ABNA JOB NO. 20-5075



USER NAME = mconroy	DESIGNED - F. EPPERT	REVISED -
	DRAWN - M. CONROY	REVISED -
PLDT SCALE = 24,000' / 1" = 1'	CHECKED - A. BAH	REVISED -
PLDT DATE = 3/15/2021	DATE - 3/11/2021	REVISED -

STATE OF ILLINOIS
DEPARTMENT OF TRANSPORTATION

SIGNATURE SHEET

SCALE: N-T-S SHEET 1 OF 1 SHEETS STA. TO STA.

F.A.I. RTE.	SECTION	COUNTY	TOTAL SHEETS	SHEET NO.
64	09 (97-2-1) WS-1	WHITE	22	2
CONTRACT NO. 78847			ILLINOIS FED. AID PROJECT	

INDEX OF SHEETS

- 1 COVER SHEET
- 2 SIGNATURE SHEET
- 3 GENERAL NOTES & HIGHWAY STANDARDS
- 4-5 SUMMARY OF QUANTITIES
- 6 TYPICAL SECTIONS
- 7 SCHEDULE OF QUANTITIES
- 8 PLAN SHEET
- 9 EROSION CONTROL PLAN
- 10-22 WEIGH IN MOTION DETAILS

HIGHWAY STANDARDS

- 000001-08 STANDARD SYMBOLS, ABBREVIATIONS AND PATTERNS
- 001001-02 AREAS OF REINFORCEMENT BARS
- 001006 DECIMAL OF AN INCH AND OF A FOOT
- 280001-07 TEMPORARY EROSION CONTROL SYSTEMS
- 421001-03 BAR REINFORCEMENT FOR CRC PAVEMENT
- 442001-04 CLASS A PATCHES
- 601001-05 PIPE UNDERDRAINS
- 601101-02 CONCRETE HEADWALL FOR PIPE UNDERDRAINS
- 630001-12 STEEL PLATE BEAM GUARDRAIL
- 630301-09 SHOULDER WIDENING FOR TYPE 1 (SPECIAL) GUARDRAIL TERMINALS
- 631011-10 TRAFFIC BARRIER TERMINAL, TYPE 2
- 701101-05 OFF-RD OPERATIONS, MULTILANE, 15' TO 24' FROM PAVEMENT EDGE
- 701106-02 OFF-RD OPERATIONS, MULTILANE, MORE THAN 15' AWAY
- 701400-10 APPROACH TO LANE CLOSURE, FREEWAY/EXPRESSWAY
- 701401-12 LANE CLOSURE, FREEWAY/EXPRESSWAY
- 701901-08 TRAFFIC CONTROL DEVICES
- 725001-01 OBJECT AND TERMINAL MARKERS
- 780001-05 TYPICAL PAVEMENT MARKINGS
- 781001-04 TYPICAL APPLICATIONS RAISED REFLECTIVE PAVEMENT MARKERS
- 782006-01 GUARDRAIL AND BARRIER WALL REFLECTOR MOUNTING DETAILS
- 805001-01 ELECTRICAL SERVICE INSTALLATION DETAILS
- 814001-03 HANDHOLES
- 838001-01 BREAKAWAY DEVICES
- 878001-11 CONCRETE FOUNDATIONS DETAILS
- 886001-01 DETECTOR LOOP INSTALLATIONS

GENERAL NOTES

- 1 AT ALL LOCATIONS WHERE THE PROPOSED HOT MIX ASPHALT OR CONCRETE PAVEMENT JOINS AN EXISTING HOT MIX ASPHALT OR CONCRETE PAVEMENT, A FULL DEPTH SAWED JOINT SHALL BE CONSTRUCTED. THE COST OF THIS JOINT WILL BE INCLUDED IN THE COST OF THE TYPE OF PAVEMENT BEING CONSTRUCTED.
- 2. EXISTING PIPE UNDERDRAIN OUTLETS IN THE FORESLOPES OR MEDIAN SLOPES SHALL BE PRESERVED AND PROTECTED DURING CONSTRUCTION. ANY DAMAGE TO AN UNDERDRAIN OUTLET RESULTING FROM CONSTRUCTION ACTIVITY SHALL BE REPAIRED AT THE CONTRACTOR'S EXPENSE.

COMMITMENTS

NONE

ABNA_JOB_NO_28-6875



USER NAME = mconroy	DESIGNED - F. EPPERT	REVISED -
	DRAWN - M. CONROY	REVISED -
PLOT SCALE = 24.0000' / ft.	CHECKED - A. BAH	REVISED -
PLOT DATE = 3/15/2021	DATE - 3/11/2021	REVISED -

**STATE OF ILLINOIS
DEPARTMENT OF TRANSPORTATION**

GENERAL NOTES & HIGHWAY STANDARDS

SCALE: N-T-S SHEET 1 OF 1 SHEETS STA. TO STA.

F.A.I. RTE.	SECTION	COUNTY	TOTAL SHEETS	SHEET NO.
64	D9 (97-2-1) WS-1	WHITE	22	3
CONTRACT NO. 78847			ILLINOIS FED. AID PROJECT	

CODE NO.	ITEM	UNIT	TOTAL QUANTITY	80% FEDERAL
				20% STATE
				ROADWAY
				0004
				RURAL
20400800	FURNISHED EXCAVATION	CU YD	255	255
25000210	SEEDING, CLASS 2A	ACRE	0.50	0.50
25000350	SEEDING, CLASS 7	ACRE	0.50	0.50
25000400	NITROGEN FERTILIZER NUTRIENT	POUND	45	45
25000500	PHOSPHORUS FERTILIZER NUTRIENT	POUND	45	45
25000600	POTASSIUM FERTILIZER NUTRIENT	POUND	45	45
25100115	MULCH, METHOD 2	ACRE	0.50	0.50
25100630	EROSION CONTROL BLANKET	SQ YD	210	210
28000250	TEMPORARY EROSION CONTROL SEEDING	POUND	45	45
28000400	PERIMETER EROSION BARRIER	FOOT	177	177
44004000	PAVED DITCH REMOVAL	FOOT	110	110
44200628	CLASS A PATCHES, TYPE IV, 14 INCH	SQ YD	800	800
44213000	PATCHING REINFORCEMENT	SQ YD	800	800
44213200	SAW CUTS	FOOT	948	948

ABNA_JOB_NO. 20-6075



USER NAME = mconroy	DESIGNED - F. EPPERT	REVISED -
	DRAWN - M. CONROY	REVISED -
PLOT SCALE = 24.0000' / ft.	CHECKED - A. BAH	REVISED -
PLOT DATE = 3/15/2021	DATE - 3/11/2021	REVISED -

**STATE OF ILLINOIS
DEPARTMENT OF TRANSPORTATION**

SUMMARY OF QUANTITIES

SCALE: N-T-S SHEET 1 OF 2 SHEETS STA. TO STA.

F.A.I. RTE.	SECTION	COUNTY	TOTAL SHEETS	SHEET NO.
64	D9 (97-2-1) WS-1	WHITE	22	4
CONTRACT NO. 78847			ILLINOIS FED. AID PROJECT	

CODE NO.	ITEM	UNIT	TOTAL QUANTITY	80% FEDERAL 20% STATE	
				ROADWAY	
				0004	RURAL
44213204	TIE BARS 3/4"	EACH	1138	1138	
542A0229	PIPE CULVERTS, CLASS A, TYPE 1 24"	FOOT	95	95	
54213669	PRECAST REINFORCED CONCRETE FLARED END SECTIONS 24"	EACH	2	2	
60100060	CONCRETE HEADWALLS FOR PIPE DRAINS	EACH	1	1	
60108100	PIPE UNDERDRAINS 4" (SPECIAL)	FOOT	18	18	
* 63000001	STEEL PLATE BEAM GUARDRAIL, TYPE A, 6 FOOT POSTS	FOOT	37.5	37.5	
* 63100045	TRAFFIC BARRIER TERMINAL, TYPE 2	EACH	1	1	
* 63100167	TRAFFIC BARRIER TERMINAL, TYPE 1 (SPECIAL) TANGENT	EACH	1	1	
67000400	ENGINEER'S FIELD OFFICE, TYPE A	CAL MO	4	4	
67100100	MOBILIZATION	L SUM	1	1	
70100800	TRAFFIC CONTROL AND PROTECTION, STANDARD 701401	L SUM	1	1	
70103815	TRAFFIC CONTROL SURVEILLANCE	CAL DA	10	10	
70107025	CHANGEABLE MESSAGE SIGN	CAL DA	14	14	
* 72501000	TERMINAL MARKER - DIRECT APPLIED	EACH	2	2	

CODE NO.	ITEM	UNIT	TOTAL QUANTITY	80% FEDERAL 20% STATE	
				ROADWAY	
				0004	RURAL
* 78009004	MODIFIED URETHANE PAVEMENT MARKING - LINE 4"	FOOT	675	675	
* 78200005	GUARDRAIL REFLECTORS, TYPE A	EACH	4	4	
81028360	UNDERGROUND CONDUIT, PVC, 2 1/2" DIA.	FOOT	293	293	
81400100	HANDHOLE	EACH	1	1	
81702400	ELECTRIC CABLE IN CONDUIT, 600V (XLP-TYPE USE) 3-1/C NO. 2	FOOT	270	270	
81702441	ELECTRIC CABLE IN CONDUIT, 600V (XLP-TYPE USE) 2-12/C, 1-12/C GROUND	FOOT	23	23	
X8050115	SERVICE INSTALLATION, TYPE A (MODIFIED)	EACH	1	1	
Z0026290	FURNISHING AND INSTALLING WEIGH-IN- MOTION COMPONENTS	L SUM	1	1	

* SPECIALTY ITEM

ABNA_JOB_NO. 28-6875



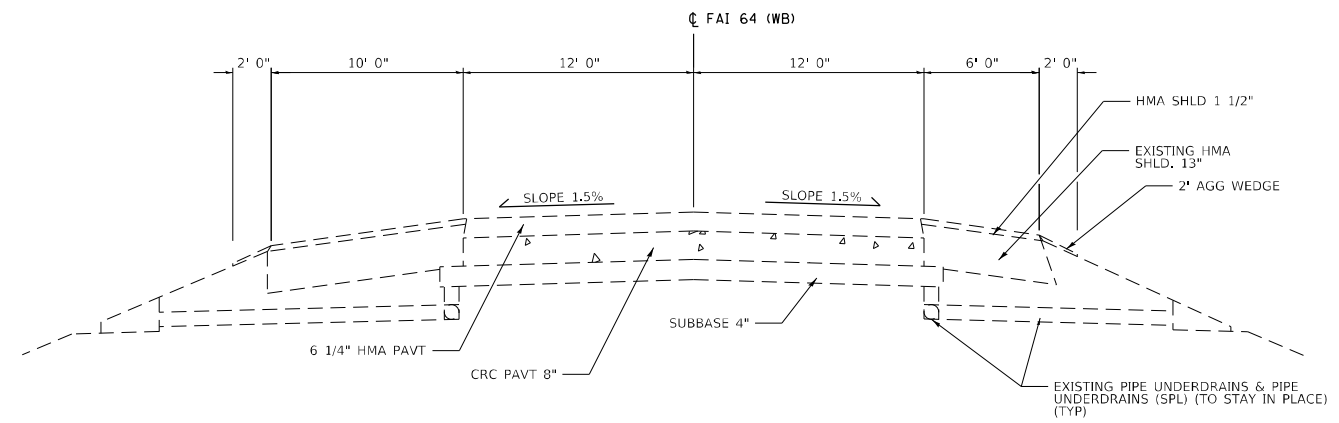
USER NAME = mconroy	DESIGNED - F. EPPERT	REVISED -
	DRAWN - M. CONROY	REVISED -
PLOT SCALE = 24.0000' / ft.	CHECKED - A. BAH	REVISED -
PLOT DATE = 3/15/2021	DATE - 3/11/2021	REVISED -

**STATE OF ILLINOIS
DEPARTMENT OF TRANSPORTATION**

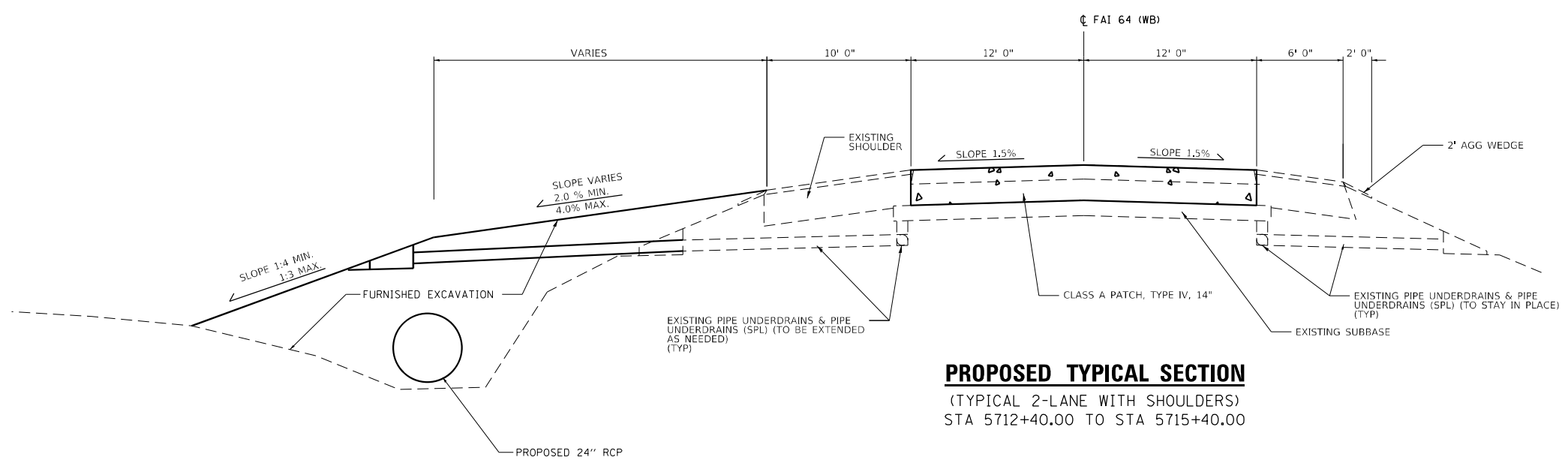
SUMMARY OF QUANTITIES

SCALE: N-T-S SHEET 2 OF 2 SHEETS STA. TO STA.

F.A.I. RTE.	SECTION	COUNTY	TOTAL SHEETS	SHEET NO.
64	D9 (97-2-1) WS-1	WHITE	22	5
CONTRACT NO. 78847			ILLINOIS FED. AID PROJECT	



EXISTING TYPICAL SECTION
 (TYPICAL 2-LANE WITH SHOULDERS)
 STA 5712+40.00 TO STA 5715+40.00



PROPOSED TYPICAL SECTION
 (TYPICAL 2-LANE WITH SHOULDERS)
 STA 5712+40.00 TO STA 5715+40.00

ABNA_JOB_NO. 20-6875



USER NAME = mconroy	DESIGNED - F. EPPERT	REVISED -
	DRAWN - M. CONROY	REVISED -
PLOT SCALE = 120.0000' / ft.	CHECKED - A. BAH	REVISED -
PLOT DATE = 4/20/2021	DATE - 3/11/2021	REVISED -

STATE OF ILLINOIS
DEPARTMENT OF TRANSPORTATION

TYPICAL SECTIONS			
SCALE: N-T-S	SHEET 1	OF 1 SHEETS	STA. TO STA.

F.A.I. RTE.	SECTION	COUNTY	TOTAL SHEETS	SHEET NO.
64	D9 (97-2-1) WS-1	WHITE	22	6
CONTRACT NO.				78847
ILLINOIS FED. AID PROJECT				

PAVEMENT SCHEDULE

STATION	STATION	OFFSET	CLA PATCH T4 14 (SQ YD)	PATCH REINFORCEMENT (SQ YD)	TIE BARS 3/4 (EACH)	SAW CUTS (FOOT)
5712+40.00	5715+40.00	LT	400	400.00	569	624
5712+40.00	5715+40.00	RT	400	400.00	569	324
TOTALS			800	800	1138	948

SEEDING SCHEDULE

STATION	STATION	OFFSET	SEEDING CL 2A (ACRE)	SEEDING CL 7 (ACRE)	NITROGEN FERT NUTR (POUND)	PHOSPHOROUS FERT NUTR (POUND)	POTASSIUM FERT NUTR (POUND)	MULCH METHOD 2 (ACRE)
5712+85.30	5716+10.40	LT	0.50	0.50	45	45	45	0.50
TOTALS			0.50	0.50	45	45	45	0.50

EROSION CONTROL SCHEDULE

STATION	STATION	OFFSET	EROSION CONTR BLANKET (SQ YD)	TEMP EROS CONTR SEED (POUND)	PERIMETER EROS BAR (FOOT)
5712+85.30	5716+10.40	LT	210	45	
5712+85.00	5713+29.80	LT			39
5712+85.00	5713+24.30	LT			39
5714+29.90	5714+76.00	LT			46
5714+29.90	5714+78.00	LT			53
TOTALS			210	45	177

DRAINAGE SCHEDULE

STATION	OFFSET	STATION	OFFSET	P CUL CL A 1 24 (FOOT)	PRC FLAR END SEC 24 (EACH)	CONC HDWL FOR P DRAIN (EACH)	PIPE UNDERDRAIN 4 SP (FOOT)	PAVED DITCH REMOVAL (FOOT)
5713+30.18	LT	5714+25.09	LT	95				
5713+30.18	LT	5713+30.18	LT		1			
5713+22.00	LT	5714+32.00	LT					110
5714+25.09	LT	5714+25.09	LT		1			
5714+74.10	LT	5714+74.10	LT			1	18	
TOTALS				95	2	1	18	110

GUARDRAIL SCHEDULE

STATION	STATION	OFFSET	SPBGR TY A 6FT POSTS (FOOT)	TRAF BAR TRM T2 (EACH)	TR BAR TRM T1 SPL TAN (EACH)	GRDRAIL REF TYPE A (EACH)	TERMINAL MARKER - DA (EACH)
5713+53.00	5714+28.00	LT	37.5	1		4	
5714+28.00	5714+53.00	LT			1		
5712+40.00	5715+40.00	LT					2
TOTALS			37.5	1	1	4	2

ELECTRICAL SCHEDULE

STATION	STATION	OFFSET	UNDRGRD C PVC 2 1/2 (FOOT)	HANDHOLE (EACH)	EC C XLP USE 3-1C2 (FOOT)	EC C XLP 2-12C 1-12CG (FOOT)	SERV INSTALL TYA MOD (EACH)
5713+57.00	5715+88.21	LT	270				
5713+57.00	5713+66.00	LT	23				
5715+88.21	5715+88.21	LT		1			
5713+57.00	5715+88.21	LT			270		
5713+57.00	5713+66.00	LT				23	
5713+76.00	5713+76.00	LT					1
TOTALS			293	1	270	23	1

PAVEMENT MARKING SCHEDULE

STATION	STATION	OFFSET	MOD URETH PM LINE 4 (FOOT)
5712+40.00	5715+40.00	LT	300
5712+40.00	5715+40.00	LT	300
5712+40.00	5715+40.00	LT	75
TOTALS			675

ABNA_JOB_NO. 28-6875



USER NAME = mconroy	DESIGNED - F. EPPERT	REVISED -
	DRAWN - M. CONROY	REVISED -
PLOT SCALE = 24.0000' / ft.	CHECKED - A. BAH	REVISED -
PLOT DATE = 4/20/2021	DATE - 3/11/2021	REVISED -

**STATE OF ILLINOIS
DEPARTMENT OF TRANSPORTATION**

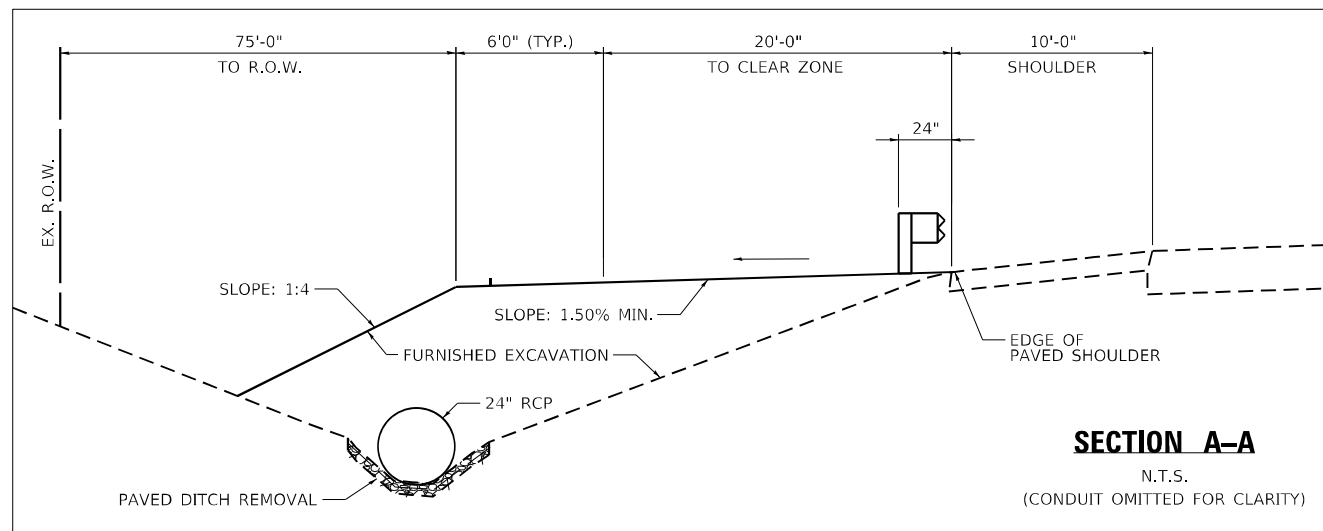
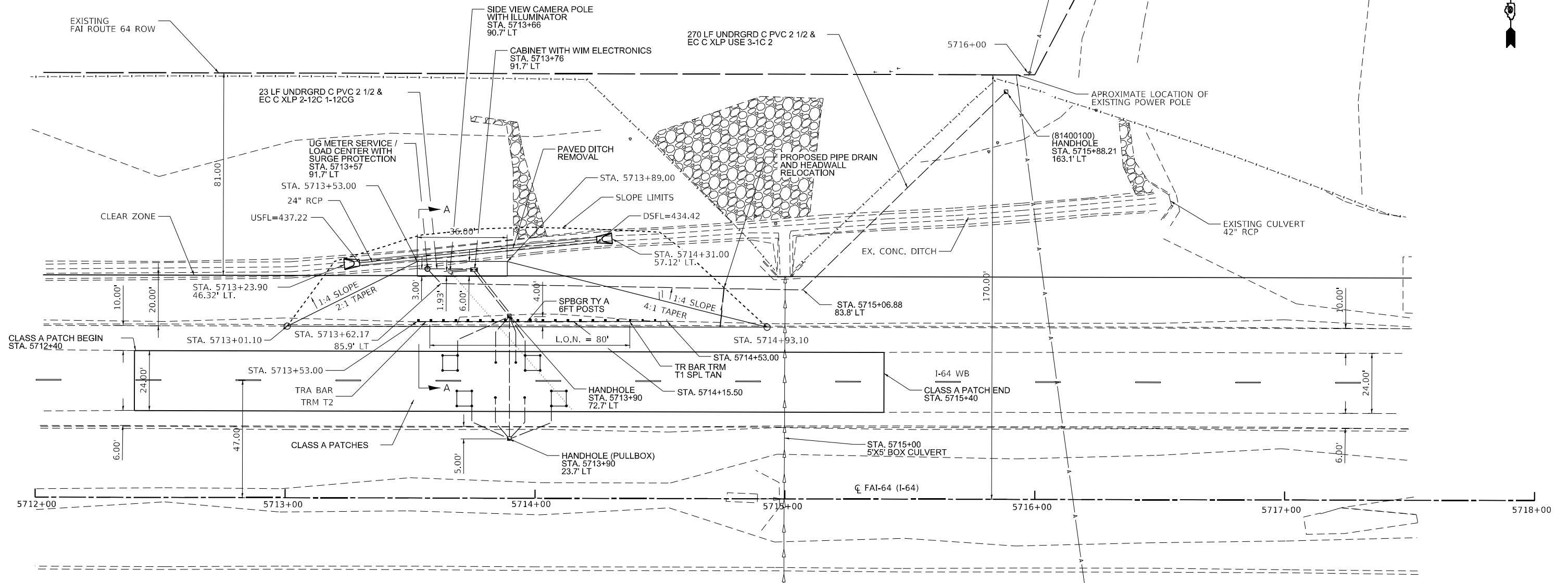
SCHEDULE OF QUANTITIES

SCALE: N-T-S SHEET 1 OF 1 SHEETS STA. TO STA.

F.A.I. RTE.	SECTION	COUNTY	TOTAL SHEETS	SHEET NO.
64	D9 (97-2-1) WS-1	WHITE	22	7
CONTRACT NO. 78847			ILLINOIS FED. AID PROJECT	

NOTE: PROPOSED ABOVE GROUND STRUCTURES SHALL HAVE FRONT FACE LOCATED A MINIMUM OF 30' FROM EDGE OF TRAVELED WAY / (EDGE OF PAVEMENT). (TO BE FIELD LOCATED BY THE DEPARTMENT)

T. 3 S. - R 10 E. OF 3RD P.M.
GRAY TOWNSHIP
WHITE COUNTY



NOTE: ALL EXISTING SOIL DISTURBED BY CONTRACTOR TO REMAIN ON STATE RIGHT-OF-WAY.

ABNA_JOB_NO. 28-6875



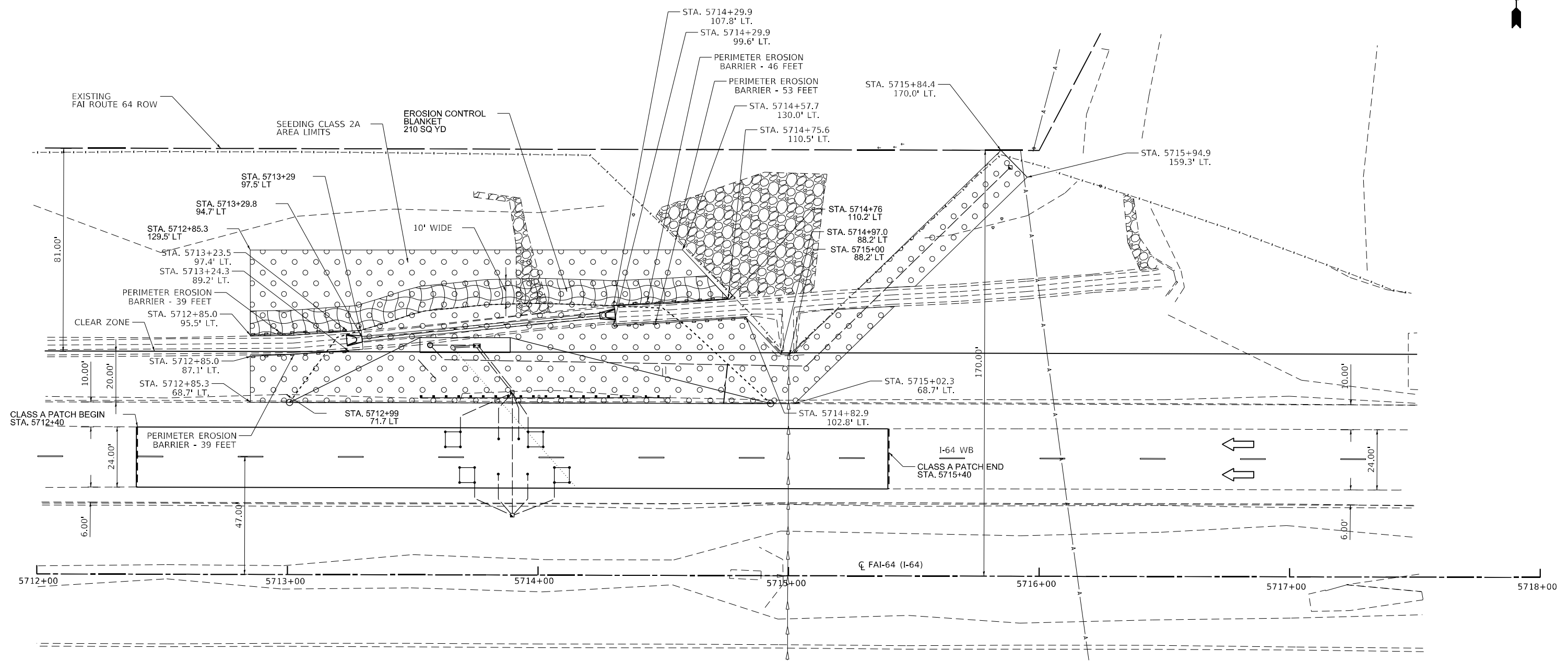
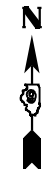
USER NAME = mconroy	DESIGNED - F. EPPERT	REVISED -
	DRAWN - M. CONROY	REVISED -
PLOT SCALE = 480.0000' / ft.	CHECKED - A. BAH	REVISED -
PLOT DATE = 4/20/2021	DATE - 3/11/2021	REVISED -

STATE OF ILLINOIS
DEPARTMENT OF TRANSPORTATION

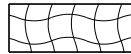
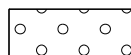

PLAN SHEET

SCALE: 1" = 20' SHEET 1 OF 1 SHEETS STA. 5712+00 TO STA. 5718+00

F.A.I. RTE.	SECTION	COUNTY	TOTAL SHEETS	SHEET NO.
64	D9 (97-2-1) WS-1	WHITE	22	8
CONTRACT NO. 78847			ILLINOIS FED. AID PROJECT	



LEGEND

-  EROSION CONTROL BLANKET
-  SEEDING CLASS 2A OR 7
-  PERIMETER EROSION BARRIER



ABNA_JOB_NO. 20-6875



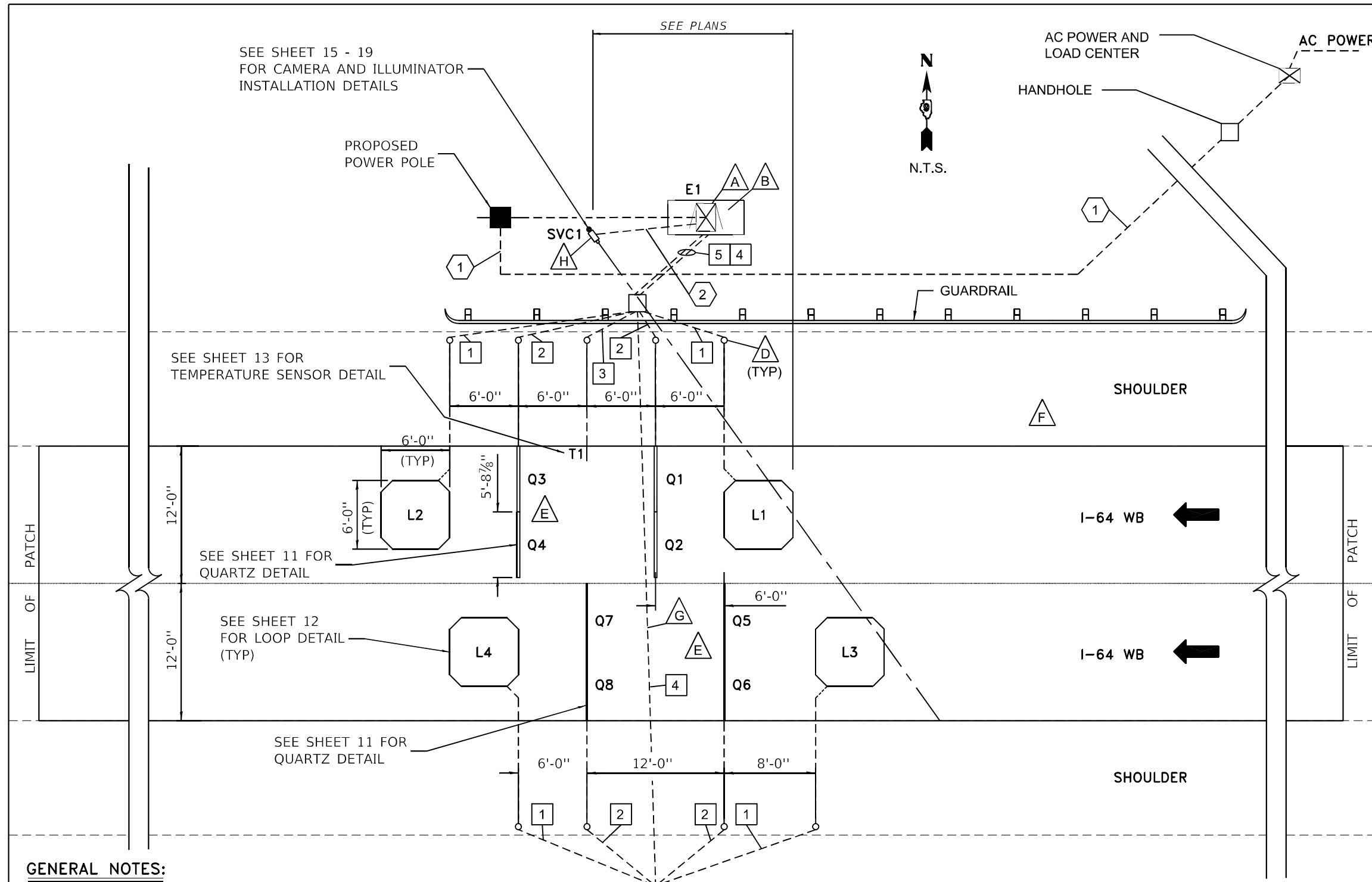
USER NAME = mconroy	DESIGNED - F. EPPERT	REVISED -	
	DRAWN - M. CONROY	REVISED -	
PLOT SCALE = 480.0000' / Ft.	CHECKED - A. BAH	REVISED -	
PLOT DATE = 3/19/2021	DATE - 3/11/2021	REVISED -	

**STATE OF ILLINOIS
DEPARTMENT OF TRANSPORTATION**

EROSION CONTROL PLAN

SCALE: 1" = 20' SHEET 1 OF 1 SHEETS STA. 5712+00 TO STA. 5718+00

F.A.I. RTE.	SECTION	COUNTY	TOTAL SHEETS	SHEET NO.
64	D9 (97-2-1) WS-1	WHITE	22	9
CONTRACT NO. 78847				
ILLINOIS FED. AID PROJECT				



- NOTES: (THIS SHEET ONLY)**
- A** CABINET WITH WIM ELECTRONICS (SEE SHEET 14 AND 20 FOR INSTALLATION DETAILS).
 - B** CABINET BASE (SEE SHEET 21 FOR INSTALLATION DETAILS).
 - C** HANDHOLE.
 - D** DRILL THROUGH SHOULDER FOR CONDUIT.
 - E** PAVEMENT ON EITHER SIDE OF EACH SENSOR MUST BE FREE OF JOINTS AND CRACKS FOR 2'.
 - F** SITE CONDITIONS AS PER ASTM E1318-02 FOR ALL LANES.
 - G** CONDUIT SHALL BE PLACED USING DIRECT BORING, JACKING OR ALTERNATIVE METHOD THAT DOES NOT REQUIRE THE SURFACE OF THE ROAD TO BE CUT AND SHALL BE INSTALLED BELOW THE PIPE UNDERDRAINS.
 - H** POLE LOCATION MUST ALLOW ADEQUATE CLEAR ZONE OR PROTECT WITH GUARDRAIL OR USE OF BREAK-AWAY POLE AS REQUIRED BY LOCAL CONSTRUCTION CODES.

- SIGNAL CONDUITS:**
- 1** 1" CONDUIT
1-LOOP WIRE (SEE SHEET 12)
 - 2** 1" CONDUIT
2-QUARTZ LEADS (SEE SHEET 11)
 - 3** 1" CONDUIT
1-TEMPERATURE SENSOR LEAD (SEE SHEET 13)
 - 4** 2 1/2" CONDUIT
2-LOOP LEADS (SEE SHEET 12)
4-QUARTZ LEADS (SEE SHEET 11)
 - 5** 2 1/2" CONDUIT
2-LOOP LEADS (SEE SHEET 12)
4-QUARTZ LEADS (SEE SHEET 11)
1-TEMPERATURE SENSOR LEAD (SEE SHEET 13)

GENERAL NOTES:

TYPICAL LAYOUT IS SHOWN. OTHER SENSORS MAY BE REQUIRED AND ARE SHOWN IN PROJECT DOCUMENTATION.

SENSOR SPACING SHOWN IS TYPICAL SPACING REQUIREMENT, ACTUAL SENSOR SPACING MAY BE ALTERED TO SUIT SITE CONDITIONS BY THE MFR FIELD REPRESENTATIVE.

ALL CONNECTIONS BETWEEN SENSORS AND LEAD CABLES ARE DONE IN HANDHOLE AND ARE SOLDERED THEN SEALED FOR WATERPROOFING. NUMBER AND PLACEMENT OF HANDHOLES NOT SHOWN.

CABLES MUST BE PROTECTED BY PVC SLEEVES WHERE THEY CROSS PAVEMENT JOINTS/CRACKS.

MFR RECOMMENDS THAT HANDHOLES BE NO FURTHER THAN 200' APART. MFR RECOMMENDS THE MINIMUM SIZE FOR HANDHOLES IS 18" X 18" X 12".

SEE SHEET 8 FOR SITE SPECIFIC LAYOUT, EXACT ROUTING OF CONDUIT TO BE DETERMINED ON SITE.

LEGEND:

- E - ELECTRONICS ENCLOSURE
- L - INDUCTIVE LOOP
- Q - QUARTZ WIM SENSOR
- SVC - SIDE VIEW CAMERA
- T - TEMPERATURE SENSOR
- CABINET
- SIGNAL CONDUIT
- POWER CONDUIT
- NOTE
- PROPOSED POWER POLE

POWER CONDUITS:

- CABINET ENCLOSURE POWER
- SVC CAMERA POWER

**SITE LAYOUT
VIRTUAL WEIGH STATION**

ABNA_JOB_NO. 20-6875



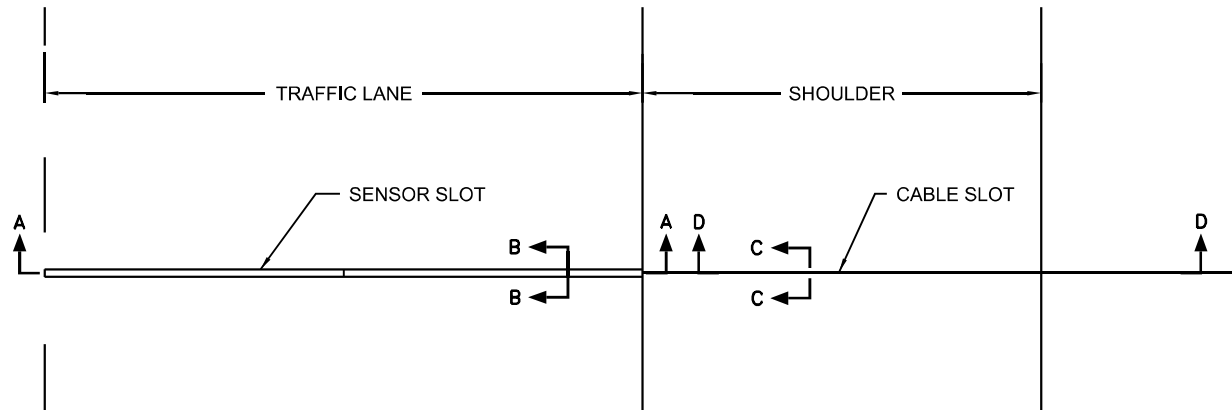
USER NAME = mconroy	DESIGNED - F. EPPERT	REVISED -
	DRAWN - M. CONROY	REVISED -
PLOT SCALE = 1/20,000' / ft.	CHECKED - A. BAH	REVISED -
PLOT DATE = 3/15/2021	DATE - 3/11/2021	REVISED -

**STATE OF ILLINOIS
DEPARTMENT OF TRANSPORTATION**

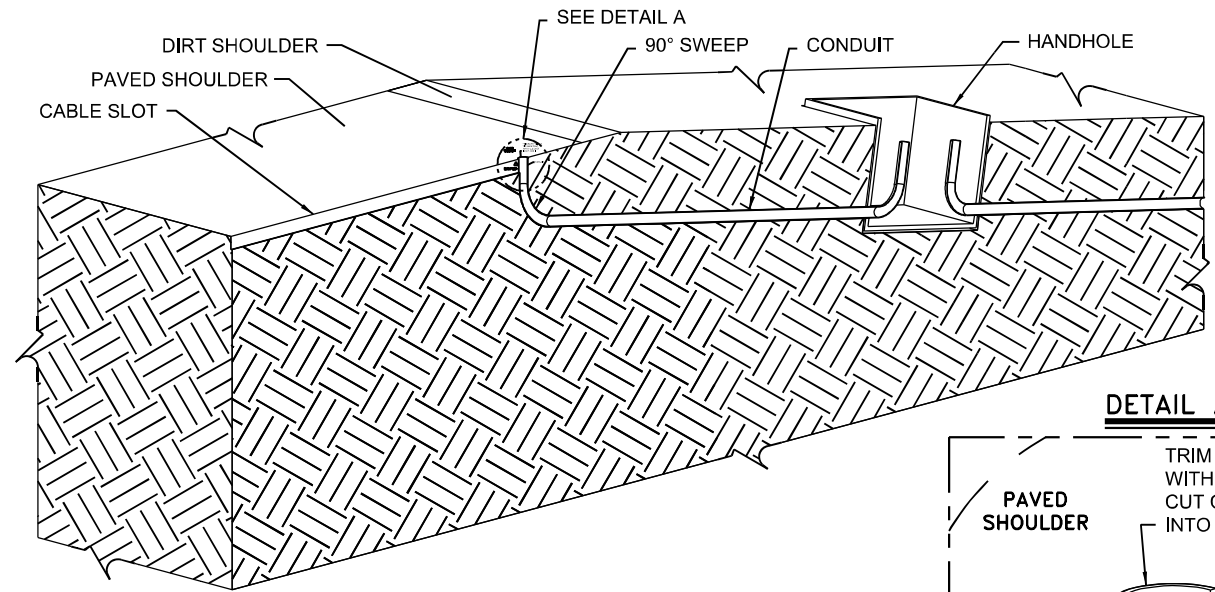
WEIGH IN MOTION DETAILS	
SCALE: N-T-S	SHEET 1 OF 13 SHEETS STA. TO STA.

F.A.I. RTE.	SECTION	COUNTY	TOTAL SHEETS	SHEET NO.
64	D9 (97-2-1) WS-1	WHITE	22	10
				CONTRACT NO. 78847
ILLINOIS FED. AID PROJECT				

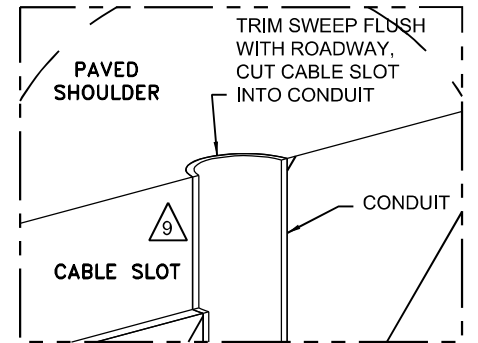
PLAN VIEW - SENSOR INSTALLATION



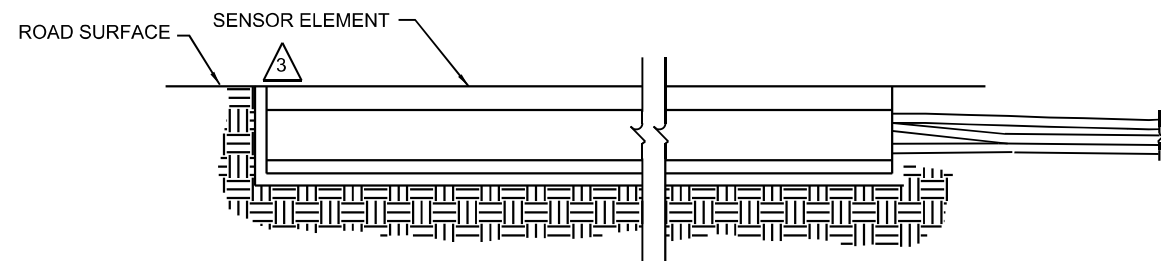
SECTION D-D (CABLE ROUTING DETAILS)



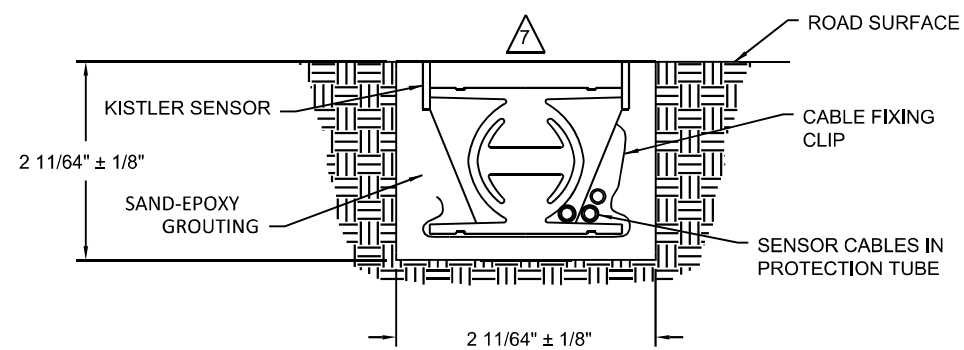
DETAIL A



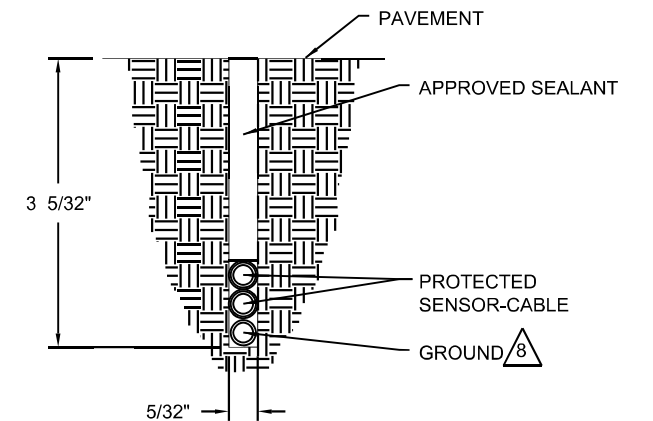
SECTION A-A



SECTION B-B



SECTION C-C



NOTES:

- 1 CRACKS OR SAW CUTS IN THE ROADWAY MUST NOT BE LOCATED CLOSER THAN 18 INCHES UPSTREAM AND 18 INCHES DOWNSTREAM OF THE KISTLER SENSOR.
- 2 SLOT LENGTH IS 6 INCHES LONGER THAN SENSOR.
- 3 SET SENSOR FLUSH WITH OR SLIGHTLY HIGHER THAN ROAD SURFACE USING INCLUDED LEVELING BEAMS.
- 4 CHECK THE RESISTANCE OF THE SENSOR BY PLACING A DIGITAL MULTIMETER ACROSS THE CENTER CONDUCTOR OF THE BNC CONNECTOR AND THE OUTER BODY. THE READING SHOULD BE INFINITY.
- 5 CHECK THE VOLTAGE OUTPUT OF THE SENSOR BY MONITORING THE METER WHEN A TRUCK PASSES OVER THE SENSOR INSTALLED IN THE ROADWAY. AS THE TRUCK PASSES OVER THE SENSOR, VOLTAGE DEFLECTION SHOULD BE OBSERVED.
- 6 FOR INSTALLATION PROCESS REFER TO MANUFACTURER'S INSTRUCTION MANUAL.
- 7 SENSOR MUST BE GROUND FLUSH WITH ROAD SURFACE AFTER GROUT HAS CURED.
- 8 IF SIGNIFICANT NOISE SOURCES ARE IDENTIFIED, OVERHEAD POWER SOURCES ETC., CONNECT GROUND WIRE. THE OTHER END OF GROUND WIRE CONNECTS TO CABINET GROUND BUSBAR.
- 9 CORE DRILL OR CUT NOTCH IN PAVED SHOULDER FOR SWEEP. PLUG SWEEP OPENING, COVER WITH LOOP SEALANT.

SENSOR INSTALLATION

ABNA_JOB_NO. 20-6875



USER NAME = mconroy	DESIGNED - F. EPPERT	REVISED -
	DRAWN - M. CONROY	REVISED -
PLOT SCALE = 12x6.864 '1' / ft.	CHECKED - A. BAH	REVISED -
PLOT DATE = 3/15/2021	DATE - 3/11/2021	REVISED -

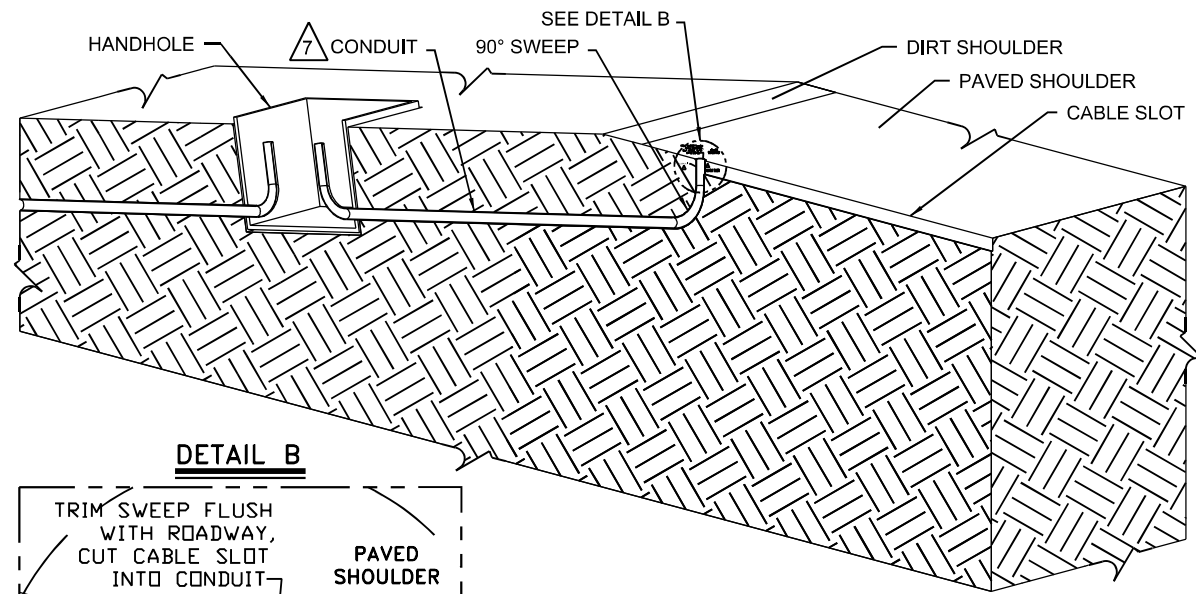
**STATE OF ILLINOIS
DEPARTMENT OF TRANSPORTATION**

WEIGH IN MOTION DETAILS

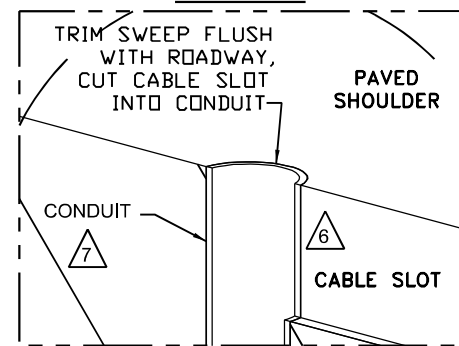
SCALE: N-T-S SHEET 2 OF 13 SHEETS STA. TO STA.

F.A.I. RTE.	SECTION	COUNTY	TOTAL SHEETS	SHEET NO.
64	D9 (97-2-1) WS-1	WHITE	22	11
CONTRACT NO. 78847			ILLINOIS FED. AID PROJECT	

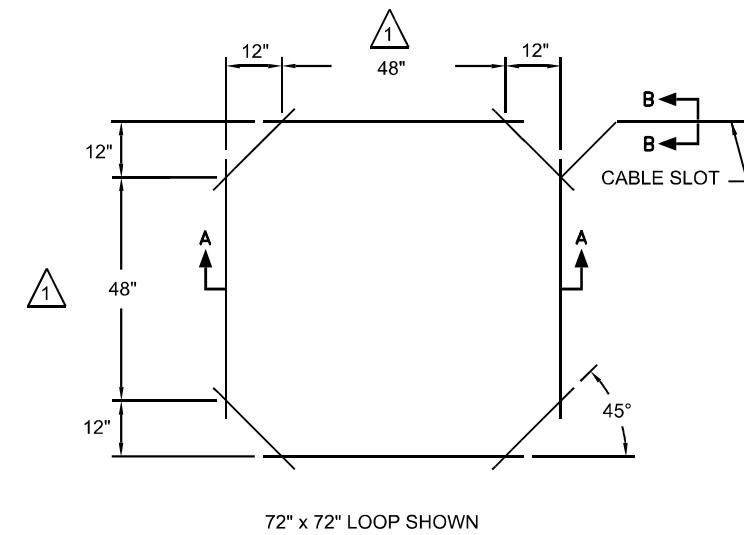
CABLE ROUTING DETAILS



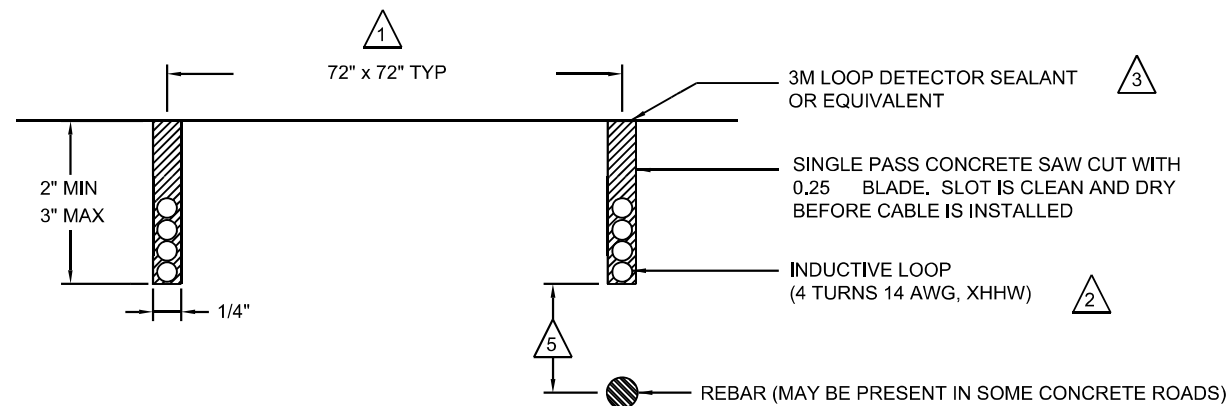
DETAIL B



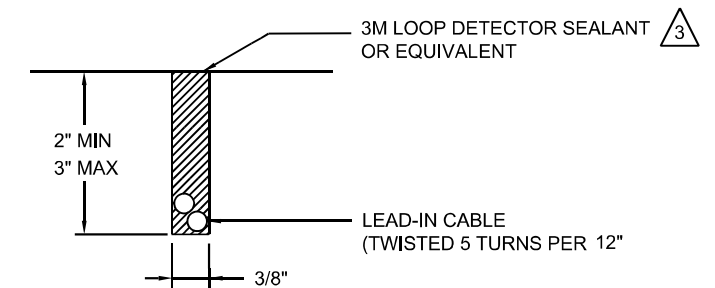
LOOP DIMENSION DETAIL



SECTION A-A



SECTION B-B



NOTES:

- 1 LOOP SIZE AS SPECIFIED ON SITE LAYOUT.
- 2 NUMBER OF TURNS AS SPECIFIED ON SITE LAYOUT.
- 3 USE CAULKING GUN PER MANUFACTURER'S SPECIFICATIONS.
- 4 LOOP INSTALLATION PER MANUFACTURER'S MANUALS - PERMANENT OCTAGON LOOPS
- 5 IF THE LOOP IS INSTALLED OVER REBAR, THERE MUST BE A MINIMUM OF 2 INCHES OF CONCRETE BELOW AND A MINIMUM OF 1.00 INCH OF FILL ABOVE THE WIRES.
- 6 CORE DRILL OR CUT NOTCH IN PAVED SHOULDER FOR SWEEP. PLUG SWEEP OPENING, COVER WITH LOOP SEALANT.
- 7 NON-METALLIC FLEX OR PVC CONDUIT.

DETECTION LOOP INSTALLATION

ABNA JOB NO. 20-6875



USER NAME = mconroy	DESIGNED - F. EPPERT	REVISED -
	DRAWN - M. CONROY	REVISED -
PLOT SCALE = 12x6.868 '1' / ft.	CHECKED - A. BAH	REVISED -
PLOT DATE = 3/15/2021	DATE - 3/11/2021	REVISED -

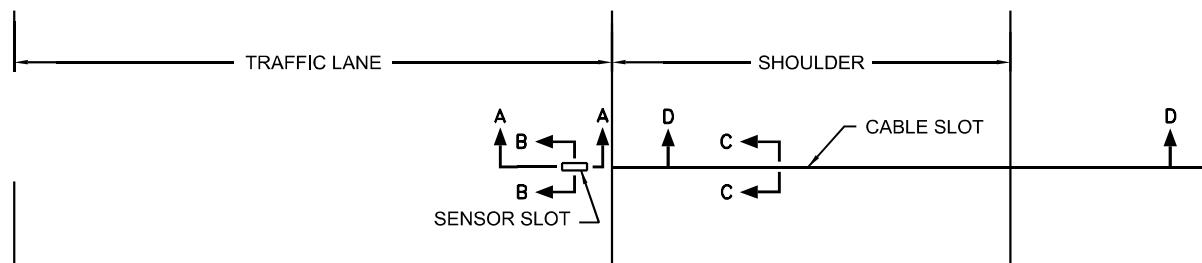
**STATE OF ILLINOIS
DEPARTMENT OF TRANSPORTATION**

WEIGH IN MOTION DETAILS

SCALE: N-T-S SHEET 3 OF 13 SHEETS STA. TO STA.

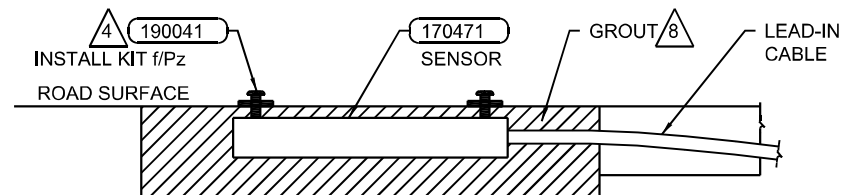
F.A.I. RTE.	SECTION	COUNTY	TOTAL SHEETS	SHEET NO.
64	D9 (97-2-1) WS-1	WHITE	22	12
CONTRACT NO. 78847			ILLINOIS FED. AID PROJECT	

PLAN VIEW - SENSOR INSTALLATION

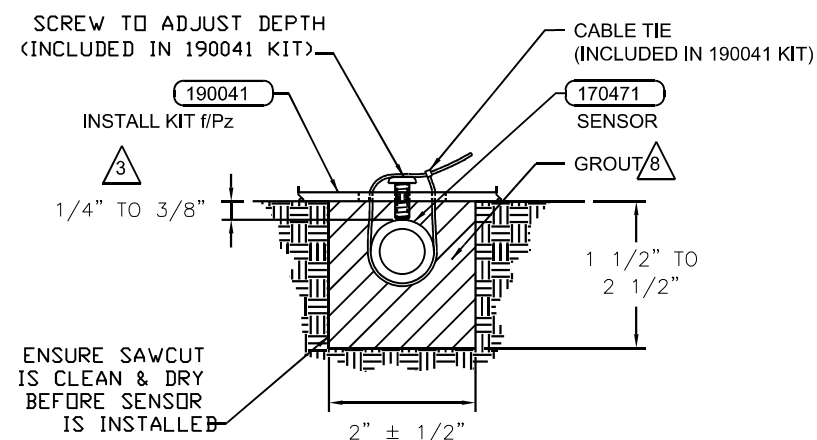


SENSOR P/N 170471

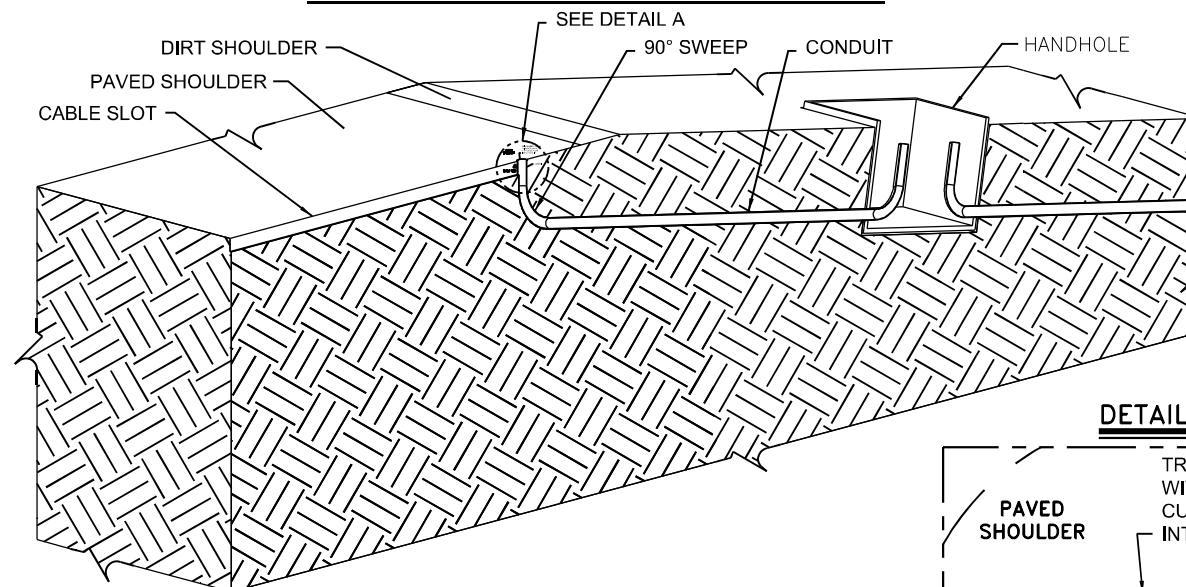
SECTION A-A



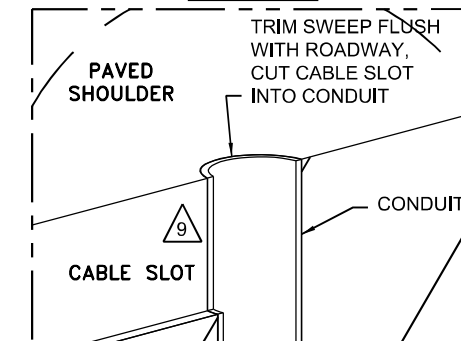
SECTION B-B



SECTION D-D (CABLE ROUTING DETAILS)

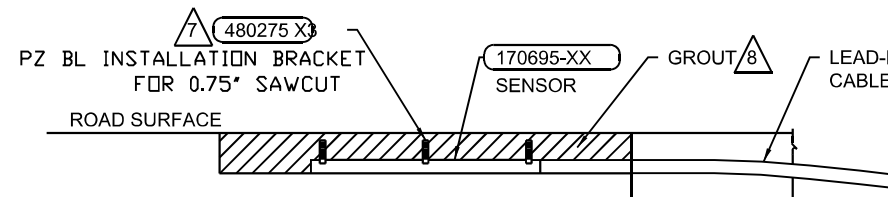


DETAIL A

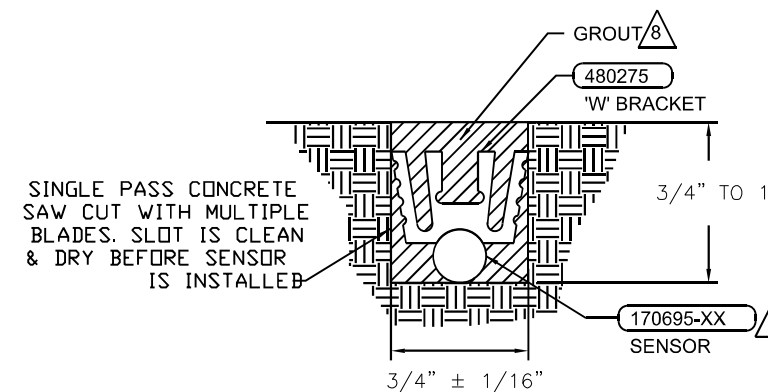


SENSOR P/N 170695-XX

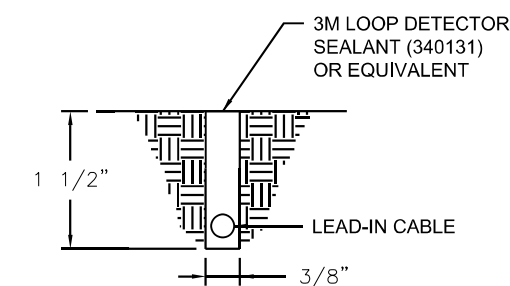
SECTION A-A



SECTION B-B



SECTION C-C



NOTES: (THIS SHEET ONLY)

- 1 CRACKS OR SAW CUTS IN THE ROADWAY MUST NOT BE LOCATED CLOSER THAN 18" UPSTREAM AND 18" DOWNSTREAM OF THE TEMPERATURE SENSOR.
- 2 SLOT LENGTH IS 4" LONGER THAN SENSOR.
- 3 SET THE SENSOR AT THE CORRECT DEPTH.
- 4 PLACE A BRACKET AT EACH END OF THE SENSOR.
- 5 LOCATE SENSOR IN SAME PAVEMENT AND WITHIN 6' OF THE TEMPERATURE COMPENSATED DEVICE. AVOID PLACING IN WHEEL PATH.
- 6 WEDGE SENSOR AGAINST FLOOR OF CUT UNDER "W" CLIP (P/N 480275).
- 7 SPACE THREE BRACKETS (P/N 480275) EVENLY OVER THE LENGTH OF THE SENSOR.
- 8 USE GROUT OF SAME TYPE AS THAT OF SENSOR BEING COMPENSATED:
PIEZO - USE AS475 (340028) OR PU200 (IT2000285)
KISTLER - USE KISTLER GROUT (340139) OR FLEXOLITH (340082)
- 9 CORE DRILL OR CUT NOTCH IN PAVED SHOULDER FOR SWEEP. PLUG SWEEP OPENING, COVER WITH LOOP SEALANT.

IN-ROADWAY TEMPERATURE SENSOR

ABNA_JOB_NO. 28-6875



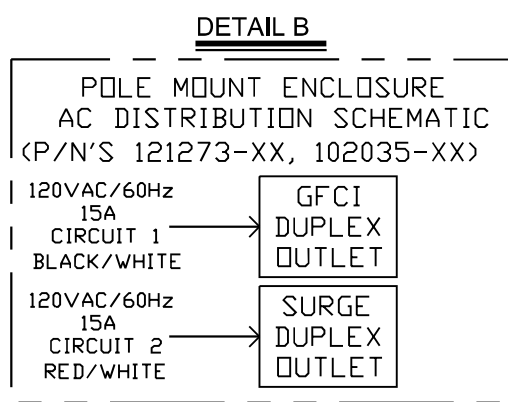
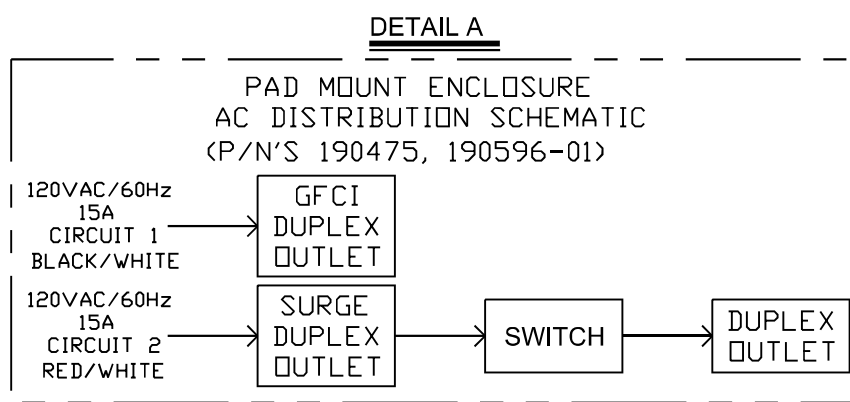
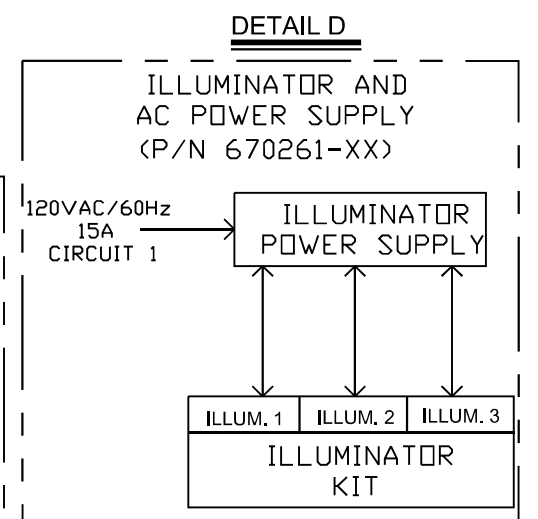
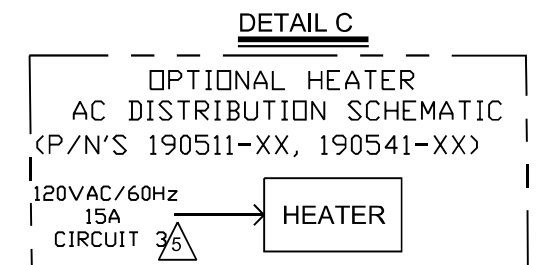
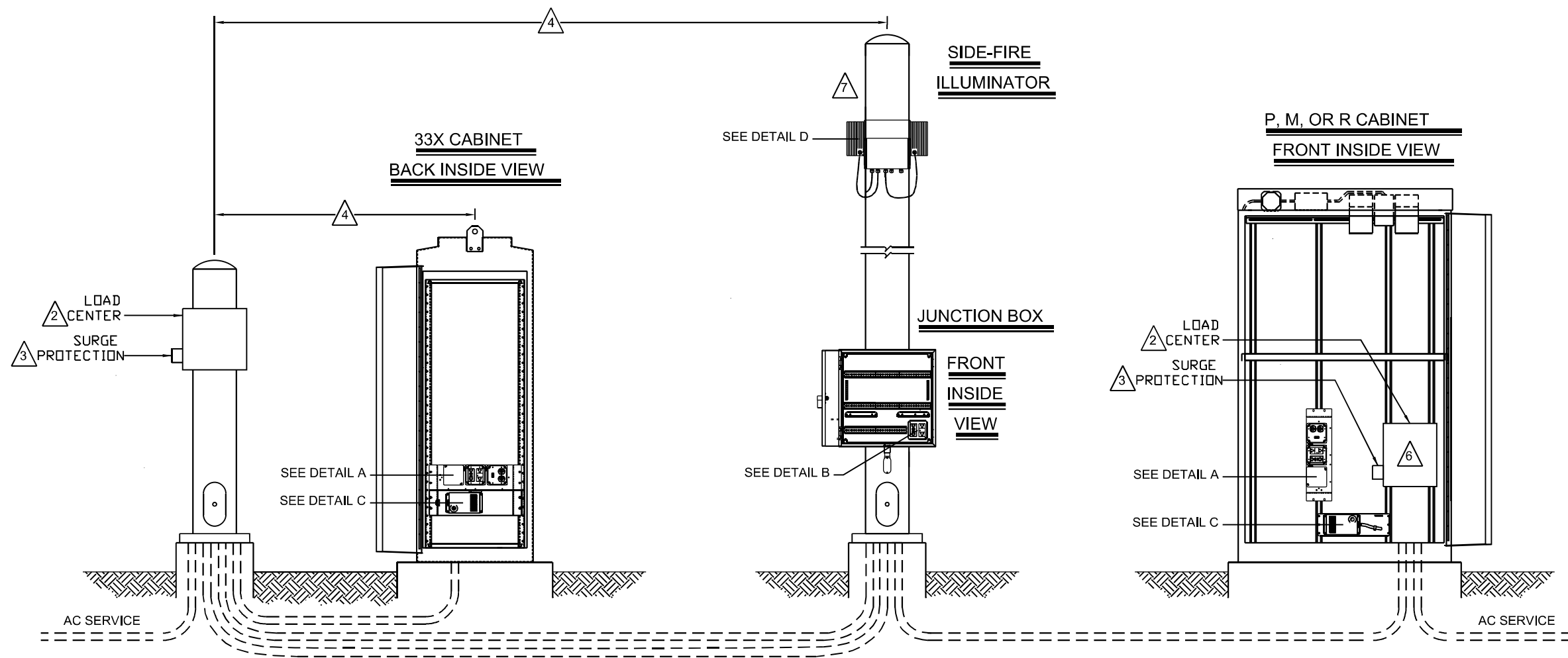
USER NAME = mconroy	DESIGNED - F. EPPERT	REVISED -
PLOT SCALE = 12x6.865 '1' / ft.	DRAWN - M. CONROY	REVISED -
PLOT DATE = 3/15/2021	CHECKED - A. BAH	REVISED -
	DATE - 3/11/2021	REVISED -

**STATE OF ILLINOIS
DEPARTMENT OF TRANSPORTATION**

WEIGH IN MOTION DETAILS

SCALE: N-T-5 SHEET 4 OF 13 SHEETS STA. TO STA.

F.A.I. RTE.	SECTION	COUNTY	TOTAL SHEETS	SHEET NO.
64	D9 (97-2-1) WS-1	WHITE	22	13
CONTRACT NO. 78847			ILLINOIS FED. AID PROJECT	



- NOTES:**
- 1 ALL ELECTRICAL DEVICES, GROUNDING, BONDING, WIRING AND MOUNTING MUST MEET THE NATIONAL ELECTRICAL CODE NFPA70 AND LOCAL ELECTRICAL CODE.
 - 2 PROVIDE SUITABLE INDOOR OR OUTDOOR LOAD CENTER. MANUFACTURER RECOMMENDS FOR CSA USE SQUARE D P/N CQO18M100RB60 OR P/N QO2L70RB, FOR UL USE P/N Q0112M100RB OR P/N Q024L70RB OR EQUIVALENT.
 - 3 EQUIPMENT MUST BE PROTECTED WITH AN ANSI/IEEE C62.41 CATEGORY C RATED PROTECTION DEVICE WITH A MINIMUM PEAK CURRENT HANDLING CAPABILITY OF 36KA (8/20μS) INSTALLED AT THE LOAD CENTER OR SUB LOAD CENTER.
 - 4 30m MAXIMUM CABLE LENGTH BETWEEN CATEGORY C PROTECTOR AND ENCLOSURE(S).
 - 5 CIRCUIT 3 OPTIONAL DEPENDING ON PRESENCE OF HEATER.
 - 6 LOAD CENTER MAY BE LOCATED INSIDE ENCLOSURE WHERE SPACE PERMITS.
 - 7 REFER TO PRODUCT DOCUMENTATION FOR OEM EQUIPMENT NOT SHOWN.

120VAC CABINET POWER INSTALLATION AND LOAD CENTER DETAIL

ABNA_JOB_NO. 28-6875



USER NAME = mconroy	DESIGNED - F. EPPERT	REVISED -
	DRAWN - M. CONROY	REVISED -
PLOT SCALE = 1/2" = 1' / ft.	CHECKED - A. BAH	REVISED -
PLOT DATE = 3/15/2021	DATE - 3/11/2021	REVISED -

**STATE OF ILLINOIS
DEPARTMENT OF TRANSPORTATION**

WEIGH IN MOTION DETAILS

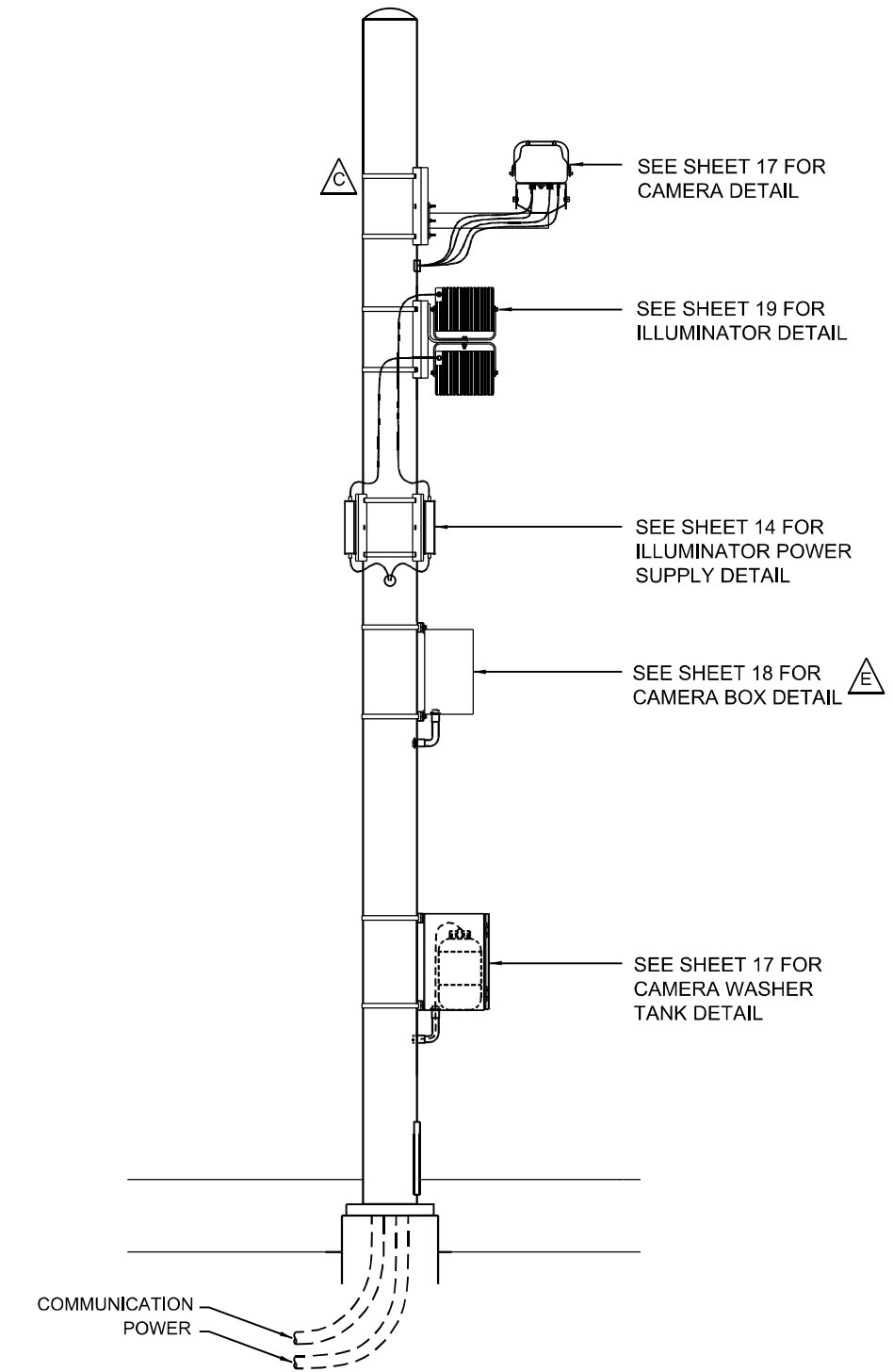
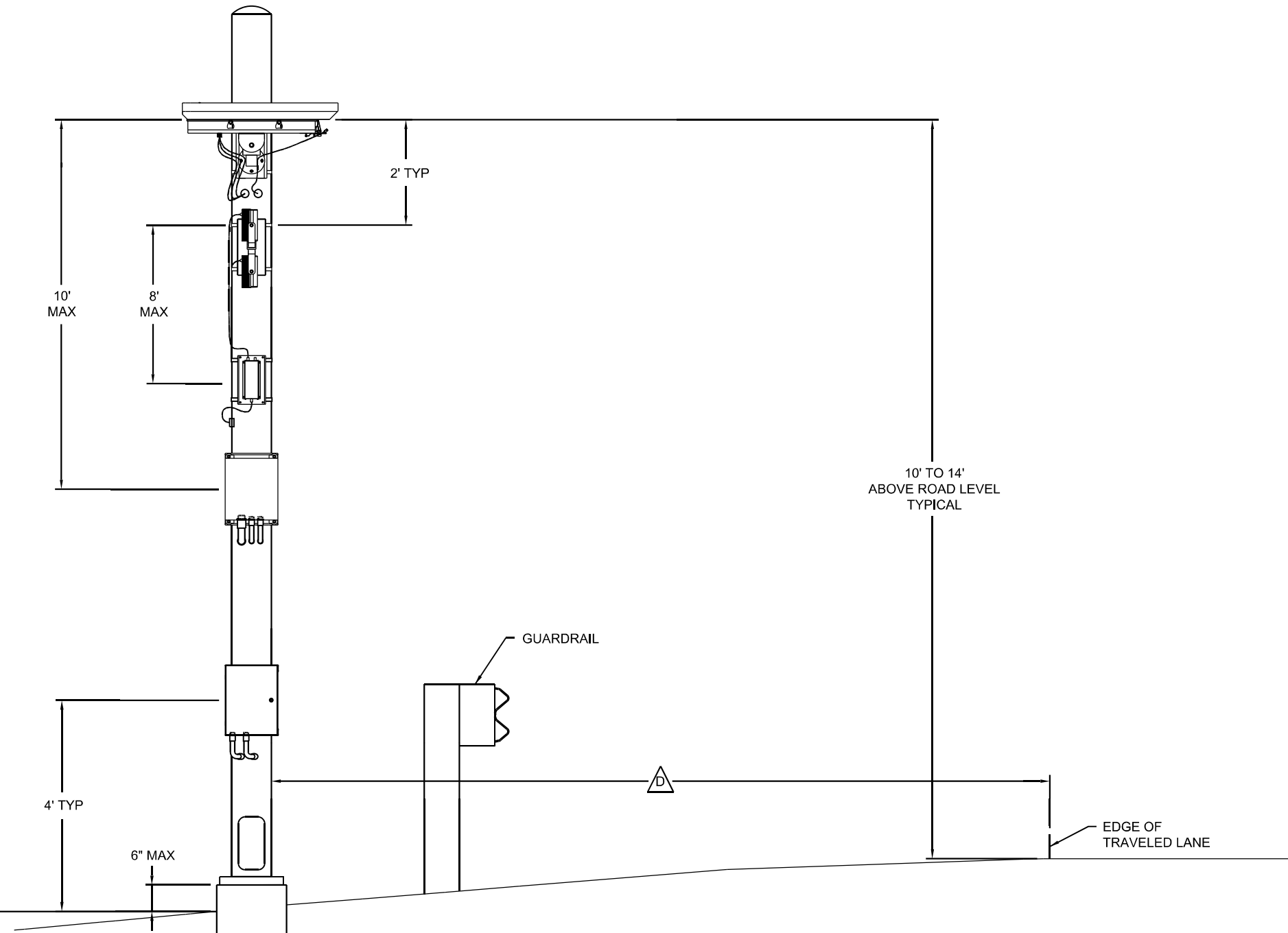
SCALE: N-T-5 SHEET 5 OF 13 SHEETS STA. TO STA.

F.A.I. RTE.	SECTION	COUNTY	TOTAL SHEETS	SHEET NO.
64	D9 (97-2-1) WS-1	WHITE	22	14
CONTRACT NO. 78847				
ILLINOIS FED. AID PROJECT				

RF/SIDE FIRE CAMERA/POLE

VIEW FACING DOWNSTREAM

VIEW FACING ROADWAY



NOTES: (THIS SHEET ONLY)

- A** POLE AND FOUNDATION DESIGN MAY REQUIRE REVIEW BY LOCAL PROFESSIONAL ENGINEER.
- B** CONDUITS TO MEET LOCAL ELECTRIC CODE.
- C** CONTRACTOR TO SUPPLY 3/4" STAINLESS STEEL BANDING FOR ATTACHING EQUIPMENT.
- D** POLE LOCATION MUST ALLOW ADEQUATE RIGHT-OF-WAY OR PROTECT WITH GUARDRAIL OR USE OF BREAK-AWAY POLE AS REQUIRED BY LOCAL CONSTRUCTION CODES.
- E** CAMERA BOX FOR FIBER OPTIC COMMUNICATION REQUIRED WHERE CABLE RUN TO WIM CABINET EXCEEDS 246 ft.

**SITE LAYOUT
SIDE FIRE CAMERA WITH ILLUMINATOR**

ABNA_JOB_NO. 28-6875



USER NAME = mconroy	DESIGNED - F. EPPERT	REVISED -
	DRAWN - M. CONROY	REVISED -
PLOT SCALE = 1/2" = 1' / ft.	CHECKED - A. BAH	REVISED -
PLOT DATE = 3/15/2021	DATE - 3/11/2021	REVISED -

**STATE OF ILLINOIS
DEPARTMENT OF TRANSPORTATION**

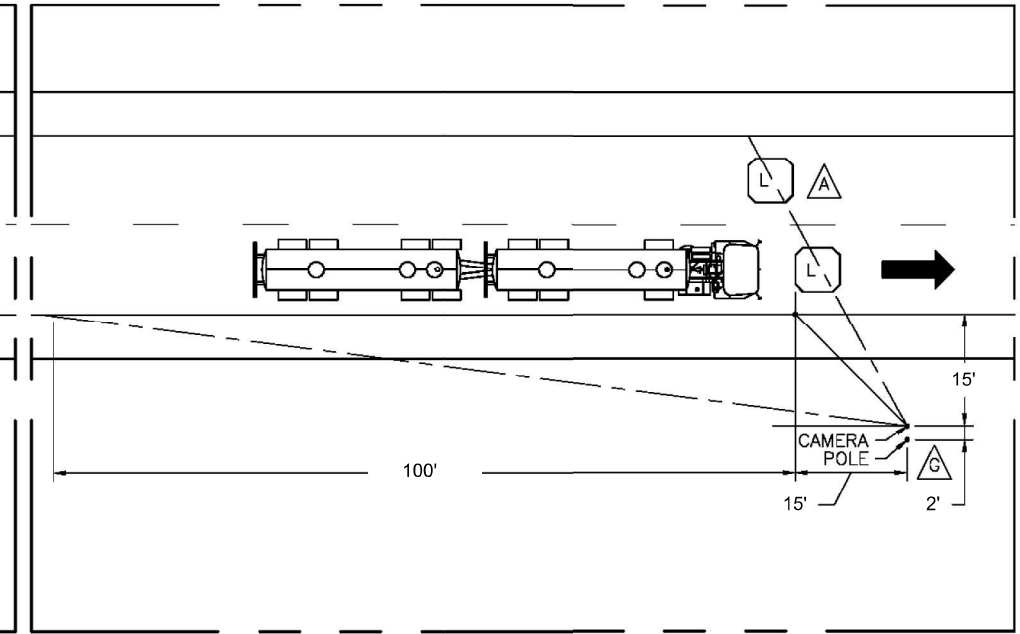
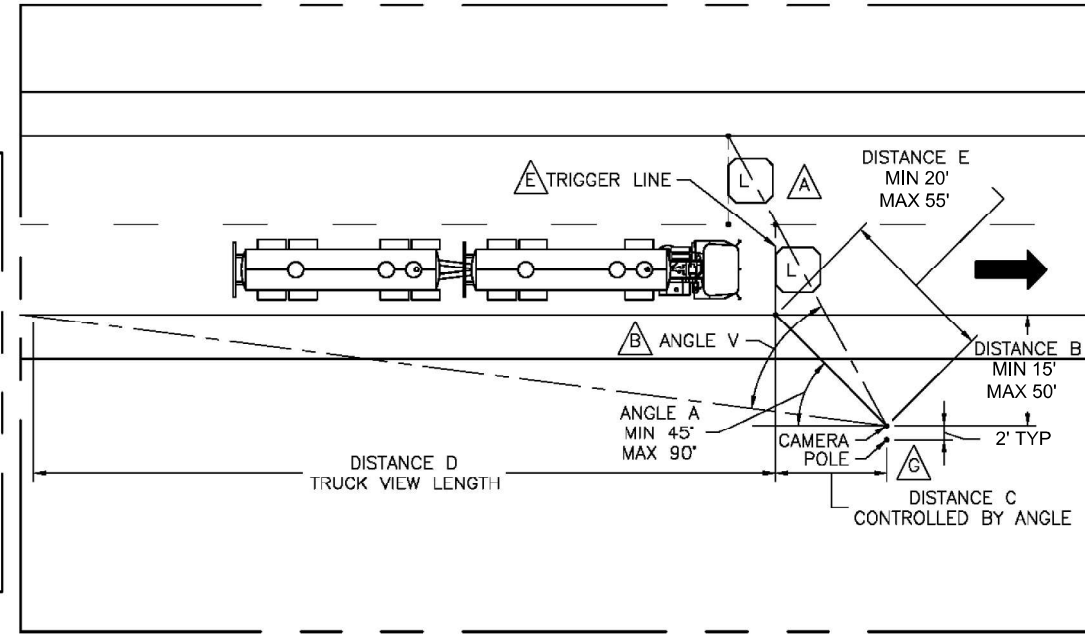
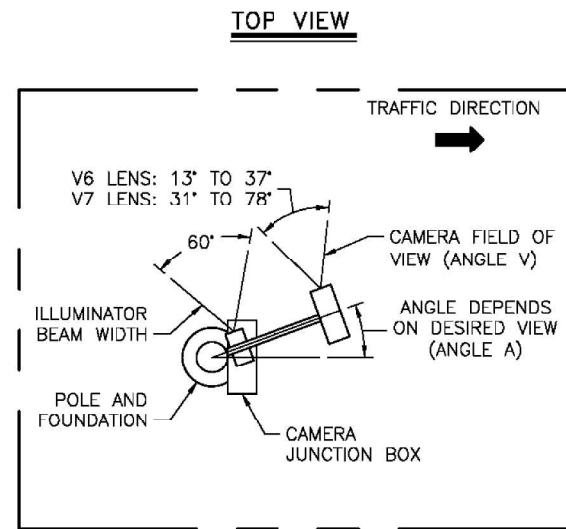
WEIGH IN MOTION DETAILS

SCALE: N-T-5 SHEET 6 OF 13 SHEETS STA. TO STA.

F.A.I. RTE.	SECTION	COUNTY	TOTAL SHEETS	SHEET NO.
64	D9 (97-2-1) WS-1	WHITE	22	15
CONTRACT NO. 78847			ILLINOIS FED. AID PROJECT	

CAMERA/POLE GEOMETRY

TYPICAL LAYOUT



NOTES: (THIS SHEET ONLY)

- A** ADDITIONAL LANES MAY BE COVERED BY A SINGLE CAMERA. TRIGGER LOOPS IN ADJACENT LANES SHOULD BE IN-LINE WITH THE UPSTREAM EDGE OF THE CAMERA FIELD OF VIEW. **NOTE:** VEHICLES IN CLOSER LANE MAY BE BLOCKED BY THE VEHICLES IN FARTHER LANES.
- B** ANGLE V IS CONTROLLED BY CAMERA ZOOM. SEE TOP VIEW.
- C** DISTANCE E LIMITED BY ILLUMINATOR RANGE
 $E = \sqrt{B^2 + C^2}$
- D** FOR NON-TYPICAL LAYOUTS, USE 3EGR0015 - SIDE FIRE CAMERA POSITION CALCULATOR TO POSITION CAMERA.
- E** IMAGE CAPTURE TO BE TRIGGERED BY LEADING EDGE OF LOOP SIGNAL.
- F** THE "IDENTIFICATION" VIEW CONFIGURATION PROVIDES AN ENHANCED VIEW OF THE TRACTOR CAB COMPARED TO THE REST OF THE TRUCK. THIS CONFIGURATION IS RECOMMENDED AS IT ALLOWS FOR BETTER VEHICLE IDENTIFICATION. THE "CLASSIFICATION" VIEW PROVIDES A LESS DISTORTED VIEW OF THE ENTIRE TRUCK; IDEAL FOR IDENTIFICATION OF VEHICLE CLASS.
- G** POLE TO BE POSITIONED AWAY FROM CAMERA LOCATION TO ACCOUNT FOR CAMERA LENS/POLE OFFSET.

CONFIGURATION TYPE	DISTANCE				ANGLE	
	B	C	D	E	A	V
IDENTIFICATION VIEW (RECOMMENDED)	15'	15'	100'	21.2'	45°	54°
CLASSIFICATION VIEW (OPTIONAL)	30'	20'	100'	36.1'	56°	51°

SITE LAYOUT
SIDE FIRE CAMERA WITH ILLUMINATOR

ABNA_JOB_NO. 28-6875



USER NAME = mconroy	DESIGNED - F. EPPERT	REVISED -
	DRAWN - M. CONROY	REVISED -
PLOT SCALE = 24,0000' / ft.	CHECKED - A. BAH	REVISED -
PLOT DATE = 3/15/2021	DATE - 3/11/2021	REVISED -

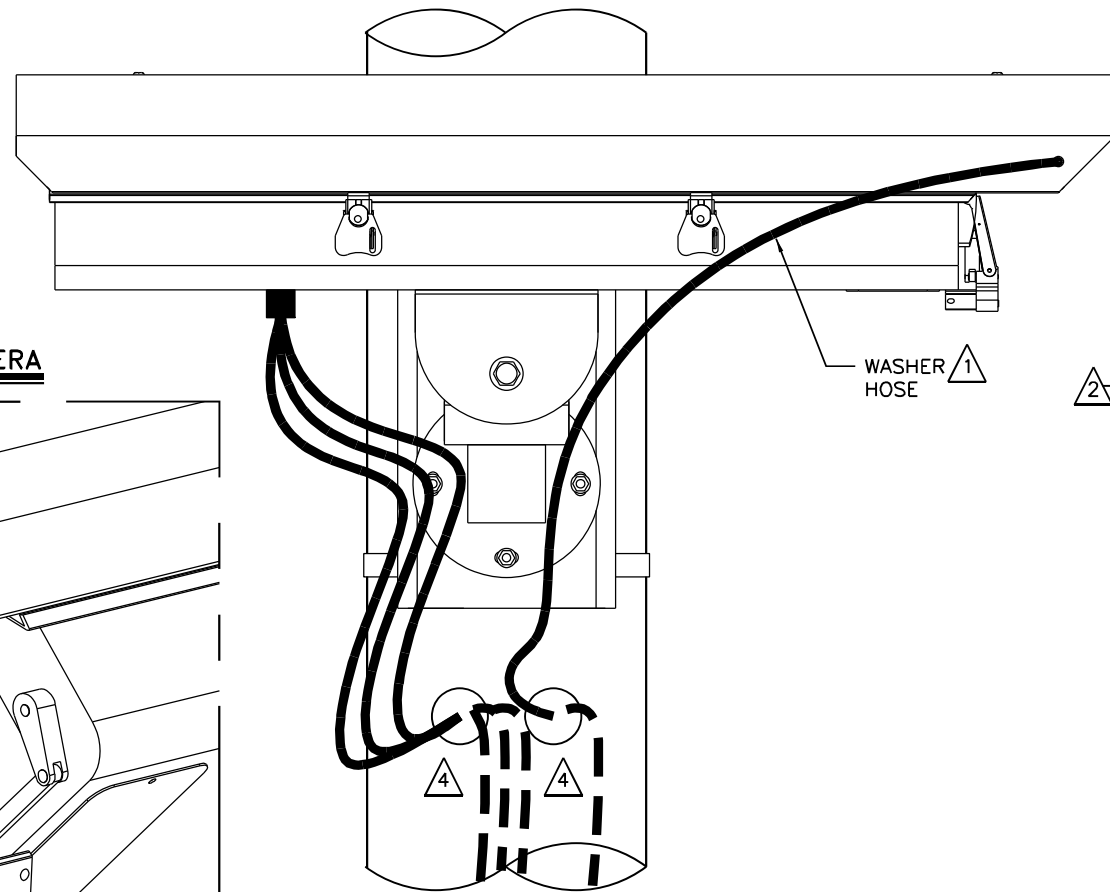
STATE OF ILLINOIS
DEPARTMENT OF TRANSPORTATION

WEIGH IN MOTION DETAILS

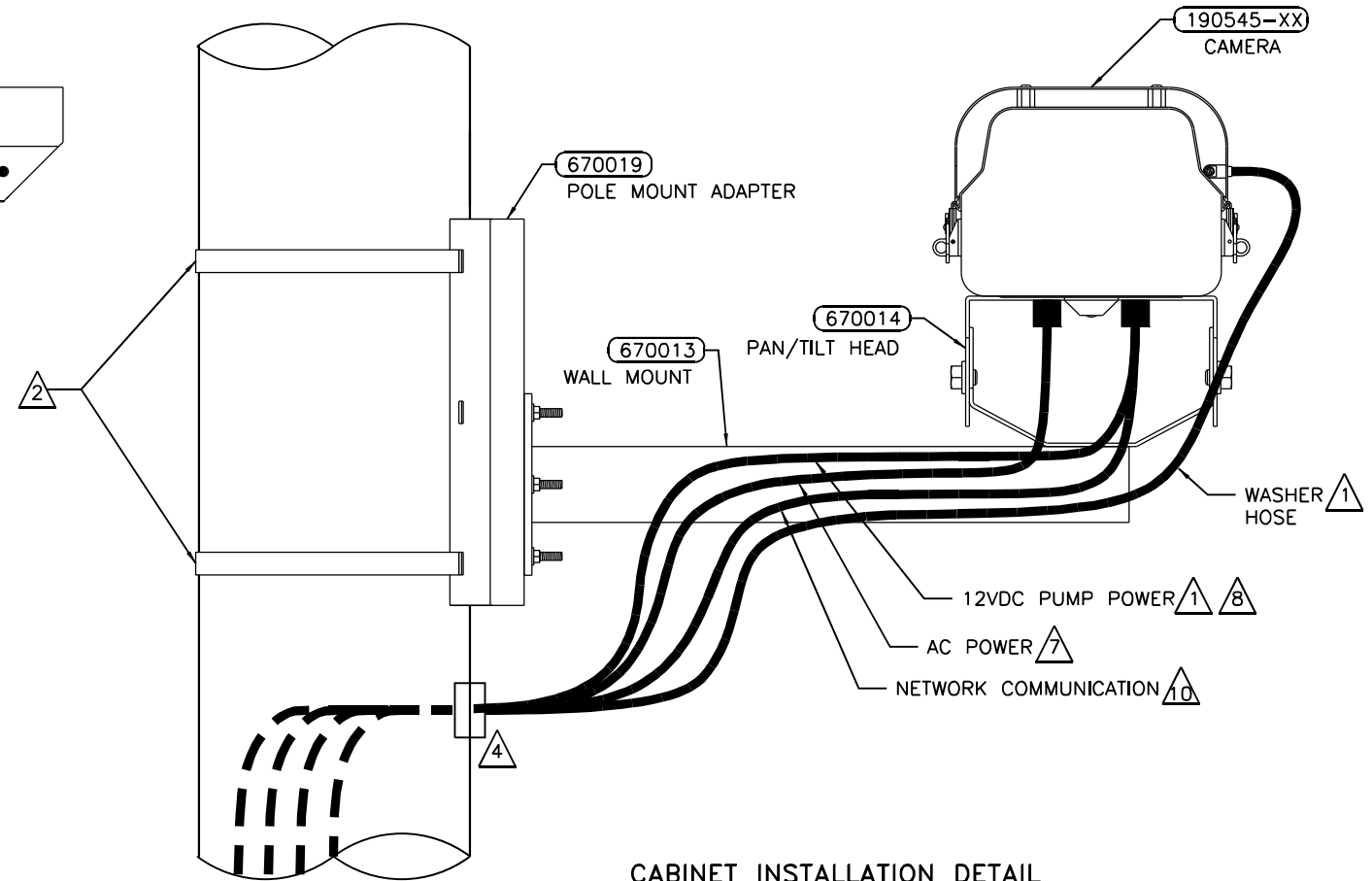
SCALE: N-T-S SHEET 7 OF 13 SHEETS STA. TO STA.

F.A.I. RTE.	SECTION	COUNTY	TOTAL SHEETS	SHEET NO.
64	D9 (97-2-1) WS-1	WHITE	22	16
ILLINOIS FED. AID PROJECT			CONTRACT NO. 78847	

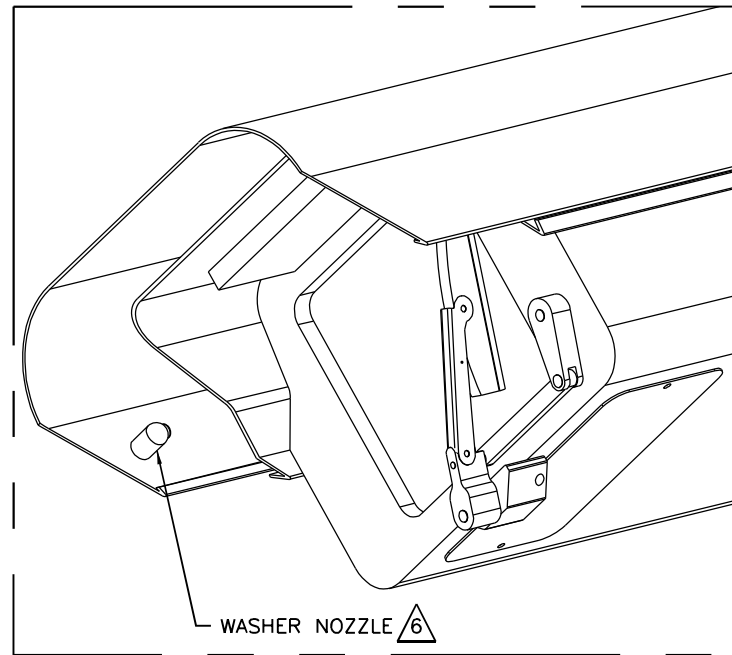
SIDE VIEW



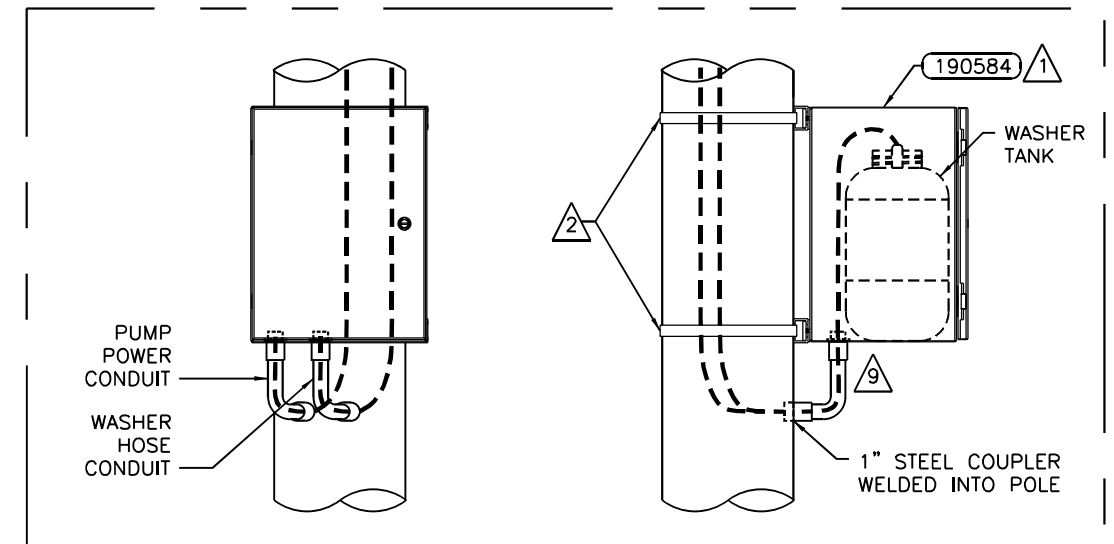
REAR VIEW



BOTTOM VIEW OF CAMERA



CABINET INSTALLATION DETAIL



**NETWORK SFC – SIDE OF POLE
CVO STANDARD SYSTEM**

NOTES:

- 1 WIPER AND WASHER TANK ASSEMBLY ARE OPTIONAL COMPONENTS INCLUDED WITH CAMERA. ENSURE WASHER HOSE IS FREE OF ANY KINKS FOR FULL LENGTH.
- 2 BAND BRACKET TO POLE WITH 0.75" STAINLESS STEEL STRAPPING. MINIMUM 3.5" POLE DIAMETER.
- 3 CAMERA AND BRACKET WEIGHT: 25.4lbs
- 4 REFER TO SHEET 14 FOR CABLE POLE ENTRY DETAIL.
- 5 WASHER TANK WEIGHT: 47.2lbs
- 6 ADJUST SPRAYER NOZZLE (IF PRESENT) TO DIRECT SPRAY SLIGHTLY BELOW CENTER OF THE CAMERA ENCLOSURE WINDOW.
- 7 SEE SHEET 14 FOR SECONDARY ENCLOSURE AC POWER DETAIL. MAXIMUM POWER CONSUMPTION IS 150W WITH WASHER/WIPER AND 110W WITHOUT.
- 8 WHITE AND BLACK PUMP POWER WIRES OF PUMP POWER CABLE ARE TERMINATED INSIDE CAMERA ENCLOSURE AT TERMINAL BLOCKS LABELED "1" AND "2" RESPECTIVELY.
- 9 INSTALL 1" LIQUIDTITE CONDUIT INCLUDED WITH P/N 190584 NEAR THE BACK OF THE ENCLOSURE TO ALLOW INSERTION OF TANK.
- 10 USE ETHERNET SURGE ARRESTOR WHEN CONNECTING NETWORK COMMUNICATION AT iSINC CABINET.

ABNA_JOB_NO. 28-6875



USER NAME = mconroy	DESIGNED - F. EPPERT	REVISED -
	DRAWN - M. CONROY	REVISED -
PLOT SCALE = 12x6.858 '1' / ft.	CHECKED - A. BAH	REVISED -
PLOT DATE = 3/15/2021	DATE - 3/11/2021	REVISED -

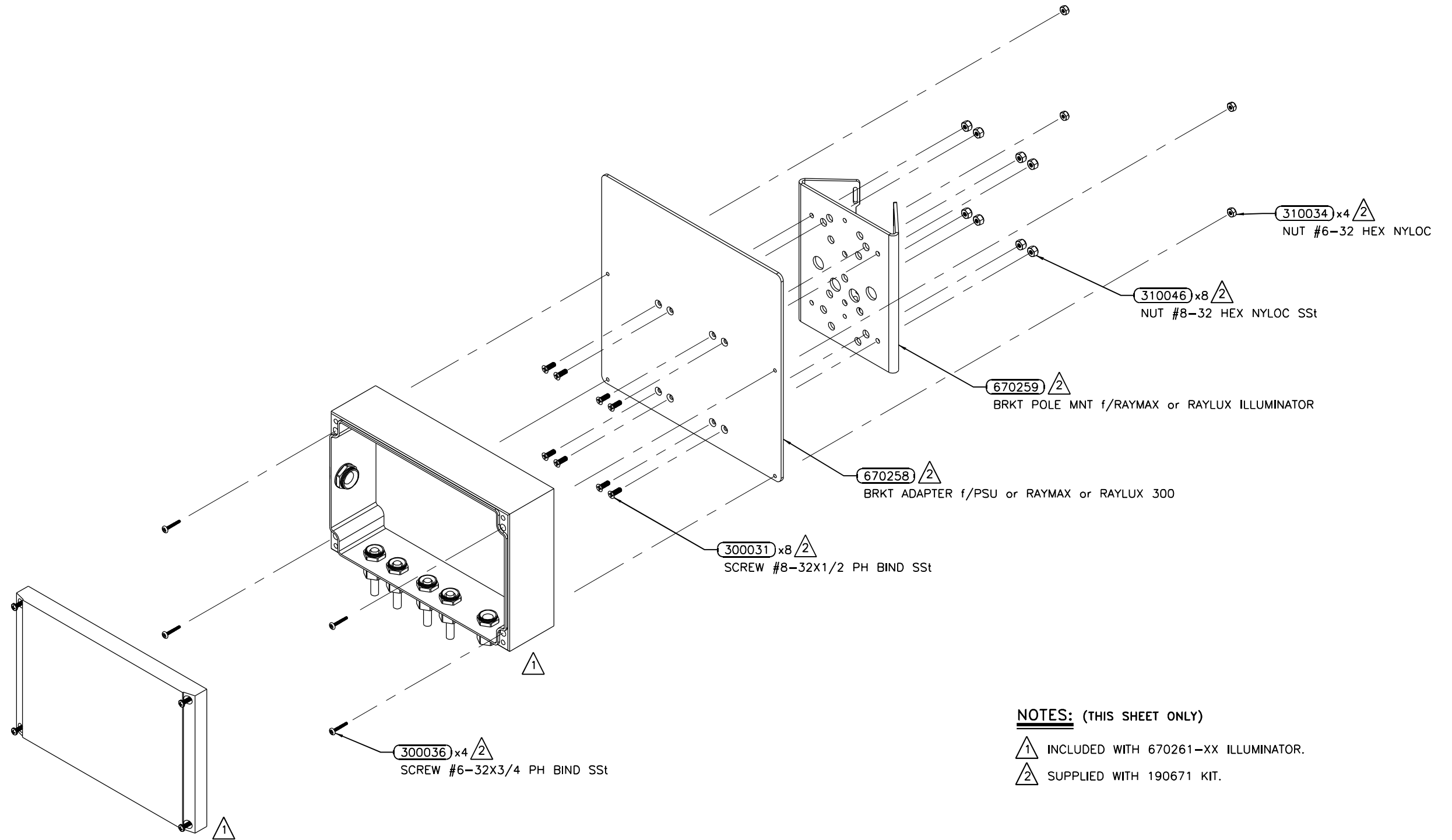
**STATE OF ILLINOIS
DEPARTMENT OF TRANSPORTATION**

WEIGH IN MOTION DETAILS

SCALE: N-T-S SHEET 8 OF 13 SHEETS STA. TO STA.

F.A.I. RTE.	SECTION	COUNTY	TOTAL SHEETS	SHEET NO.
64	D9 (97-2-1) WS-1	WHITE	22	17
CONTRACT NO. 78847			ILLINOIS FED. AID PROJECT	

STEP 1 - ASSEMBLE POWER SUPPLY TO ADAPTER PLATE 670258 AND POLE MOUNT BRACKET 670259



NOTES: (THIS SHEET ONLY)

- 1 INCLUDED WITH 670261-XX ILLUMINATOR.
- 2 SUPPLIED WITH 190671 KIT.

**RAYTEC VARIABLE ANGLE
CVO SF ILLUMINATOR**

ABNA_JOB_NO_28-6875



USER NAME = mconroy	DESIGNED - F. EPPERT	REVISED -
	DRAWN - M. CONROY	REVISED -
PLOT SCALE = 12x6.877 '1' / ft.	CHECKED - A. BAH	REVISED -
PLOT DATE = 3/15/2021	DATE - 3/11/2021	REVISED -

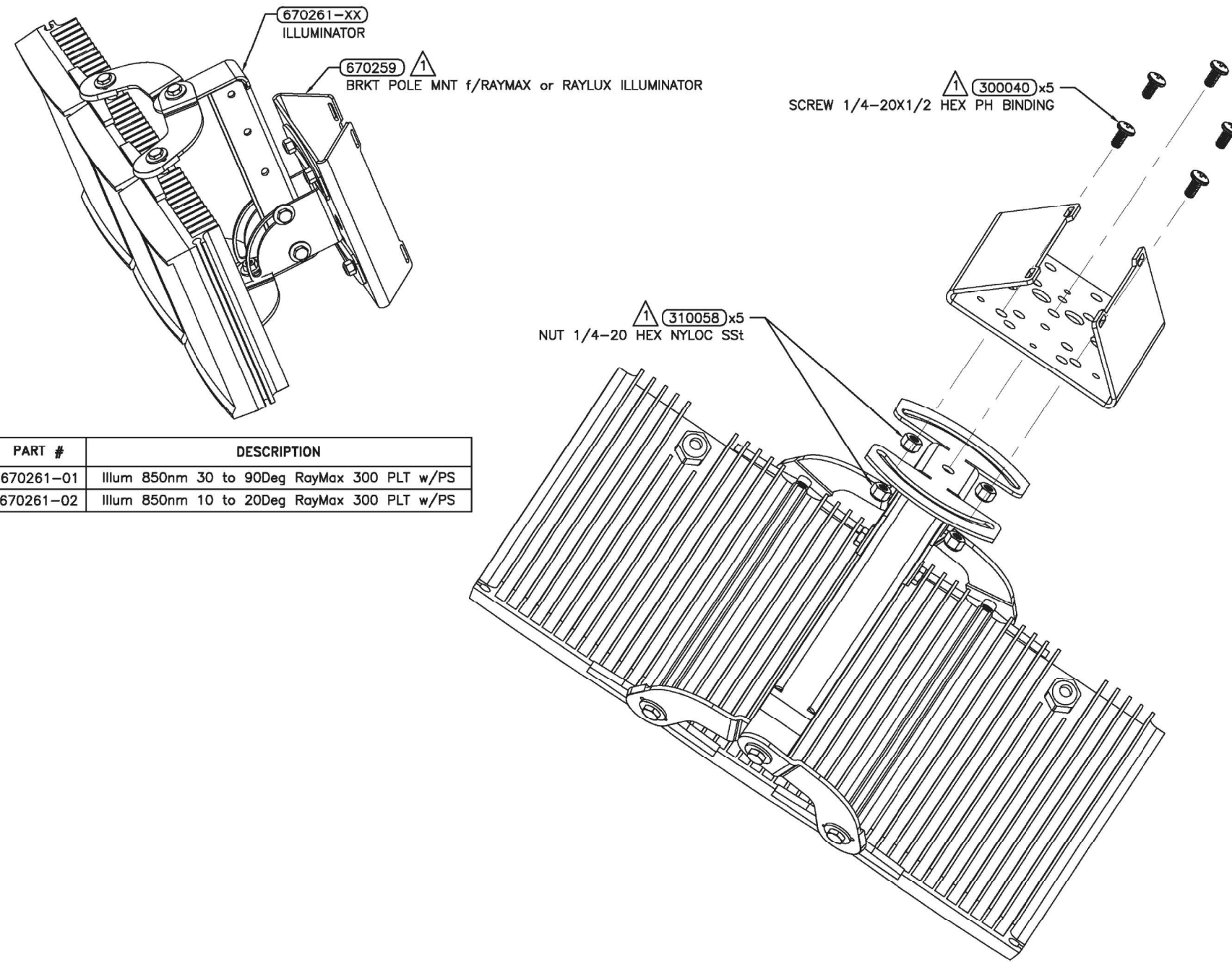
**STATE OF ILLINOIS
DEPARTMENT OF TRANSPORTATION**

WEIGH IN MOTION DETAILS

SCALE: N-T-5 SHEET 9 OF 13 SHEETS STA. TO STA.

F.A.I. RTE.	SECTION	COUNTY	TOTAL SHEETS	SHEET NO.
64	D9 (97-2-1) WS-1	WHITE	22	18
CONTRACT NO. 78847				
ILLINOIS FED. AID PROJECT				

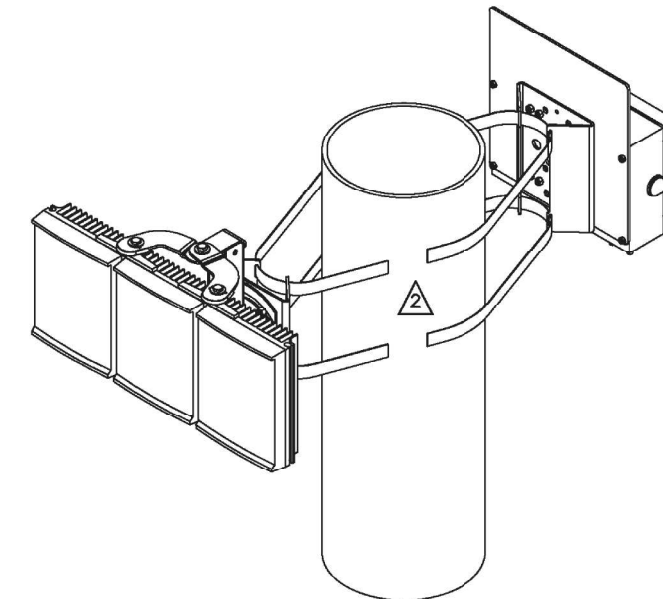
STEP 2 – ASSEMBLE ILLUMINATOR TO POLE MOUNT BRACKET 670259



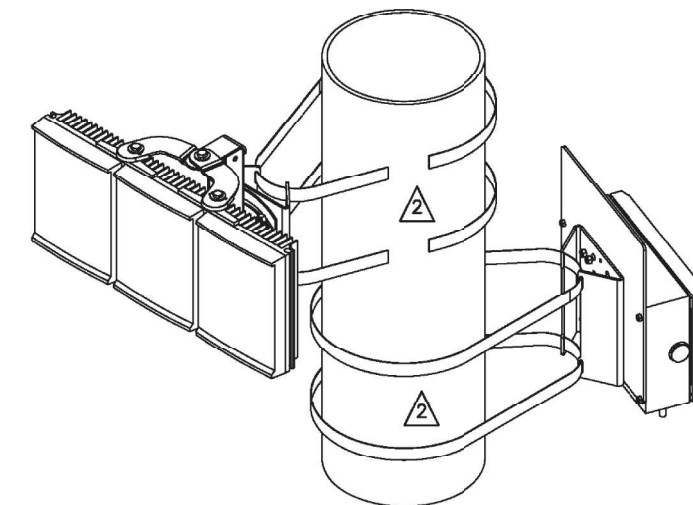
PART #	DESCRIPTION
670261-01	Illum 850nm 30 to 90Deg RayMax 300 PLT w/PS
670261-02	Illum 850nm 10 to 20Deg RayMax 300 PLT w/PS

STEP 3 – MOUNT ASSEMBLIES TO POLE TO SUIT SITE CONDITIONS

**STEP 3A – ASSEMBLIES ON POLE USING SAME BANDING
ORIENT ANGLE TO EACH OTHER AS REQUIRED**



**STEP 3B – ORIENT ASSEMBLIES ON POLE AT DIFFERENT ELEVATIONS
ANGLE EACH ASSEMBLY ON POLE AS REQUIRED**



**RAYTEC VARIABLE ANGLE
CVO SF ILLUMINATOR**

NOTES: (THIS SHEET ONLY)

- 1 SUPPLIED WITH 190671 KIT.
- 2 USE 1/2" STAINLESS STEEL BANDING AND BUCKLES OR MOUNTING BRACKET ON THE POLE. REFER TO BRACKET INSTALLATION INSTRUCTIONS AND LOCAL CODE FOR REQUIREMENTS.

ABNA_JOB_NO. 20-6075



USER NAME = mconroy	DESIGNED - F. EPPERT	REVISED -
	DRAWN - M. CONROY	REVISED -
PLOT SCALE = 24.0000' / ft.	CHECKED - A. BAH	REVISED -
PLOT DATE = 3/15/2021	DATE - 3/11/2021	REVISED -

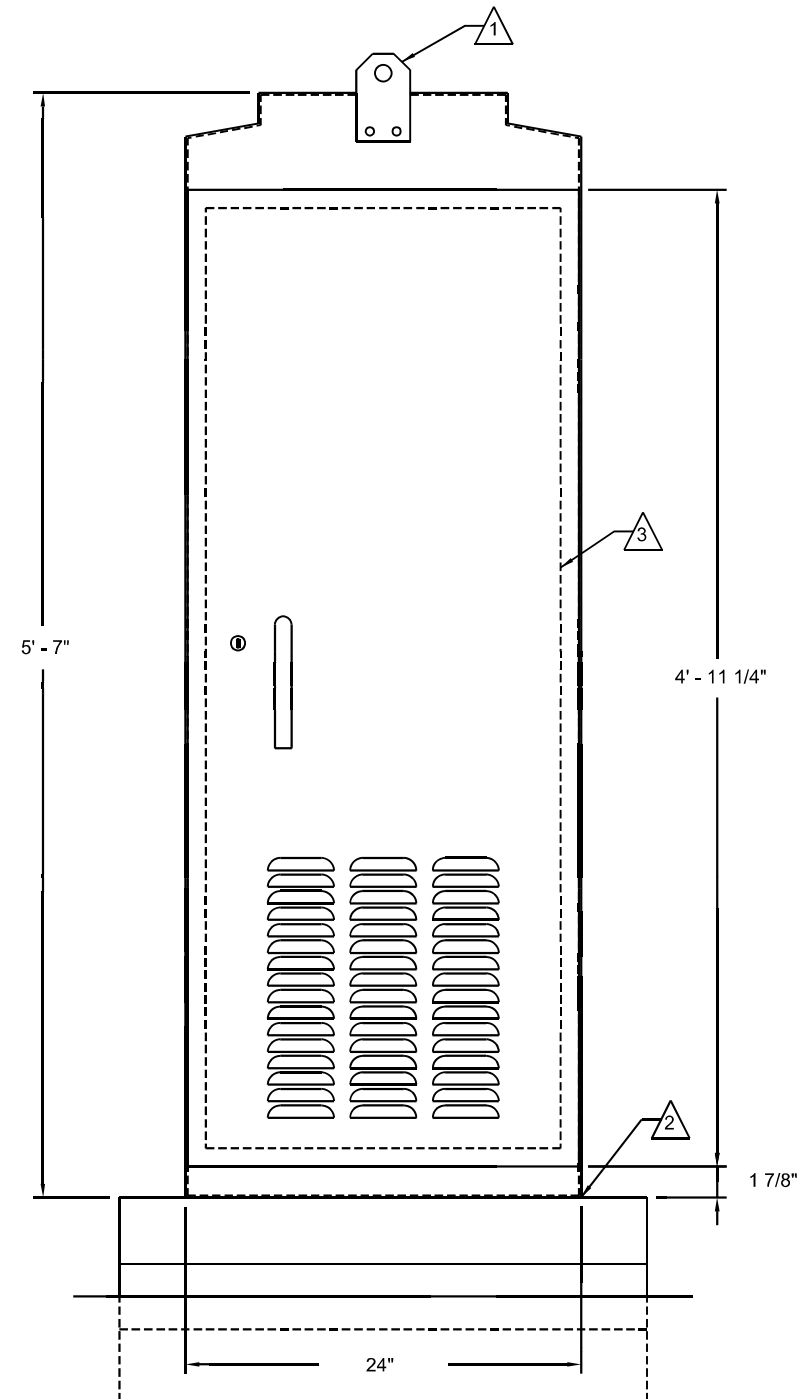
**STATE OF ILLINOIS
DEPARTMENT OF TRANSPORTATION**

WEIGH IN MOTION DETAILS

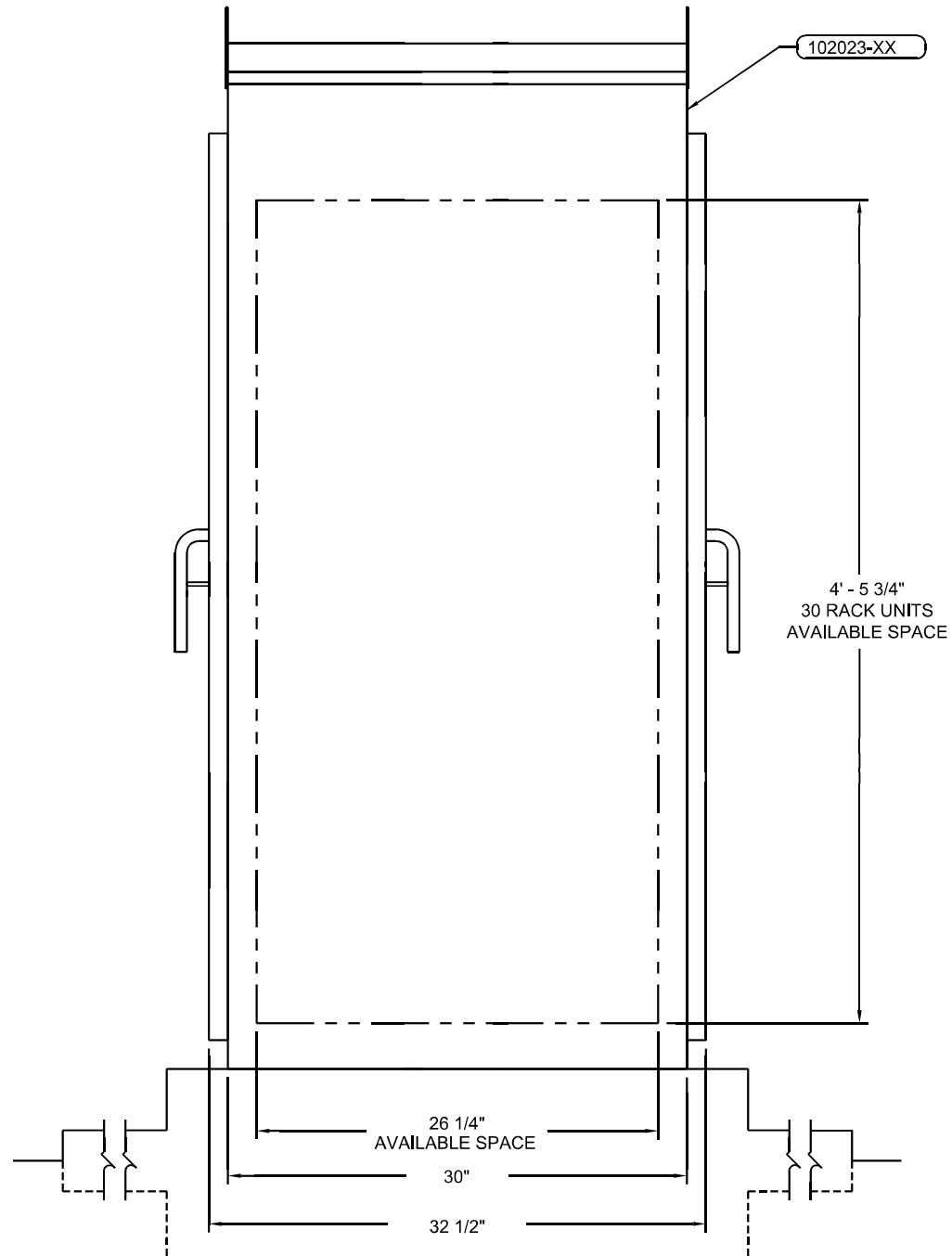
SCALE: N-T-S SHEET 10 OF 13 SHEETS STA. TO STA.

F.A.I. RTE.	SECTION	COUNTY	TOTAL SHEETS	SHEET NO.
64	D9 (97-2-1) WS-1	WHITE	22	19
CONTRACT NO. 78847			ILLINOIS FED. AID PROJECT	

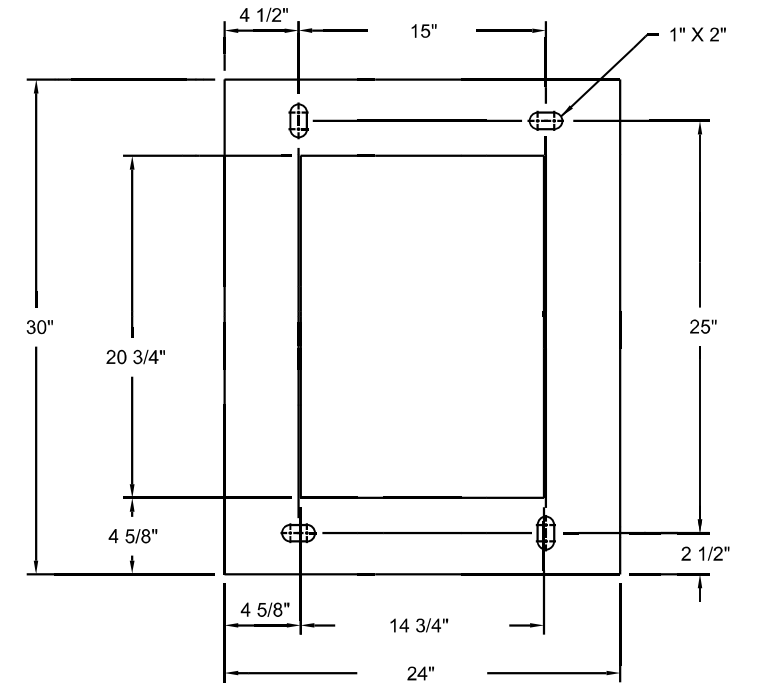
FRONT VIEW



SIDE VIEW



PAD MOUNTING PATTERN



NOTES:

- 1 LIFTING EYE. MAY BE UNBOLTED AND ROTATED 180° FOR STORAGE.
- 2 SEAL CABINET TO FOUNDATION JOINT WITH SILICONE SEALANT TO PREVENT WATER INTRUSION. LOCATE CABINET ABOVE HIGH WATER LEVEL.
- 3 REMOVABLE 19" EIA RACK.

CABINET INSTALLATION

ABNA_JOB_NO. 28-6875



USER NAME = mconroy	DESIGNED - F. EPPERT	REVISED -
	DRAWN - M. CONROY	REVISED -
PLOT SCALE = 12x6.869 '1' / ft.	CHECKED - A. BAH	REVISED -
PLOT DATE = 3/15/2021	DATE - 3/11/2021	REVISED -

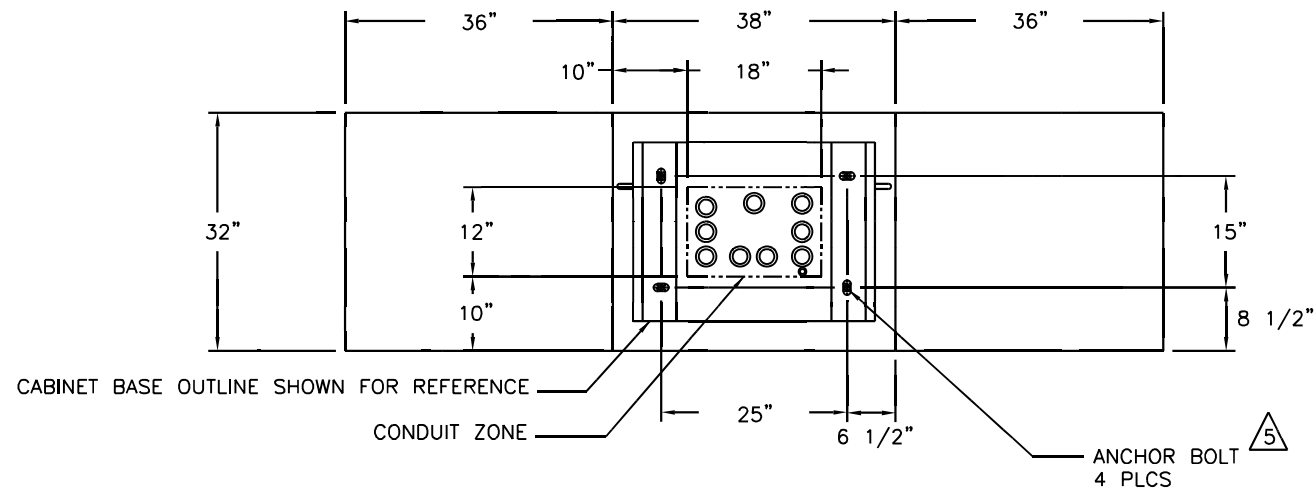
**STATE OF ILLINOIS
DEPARTMENT OF TRANSPORTATION**

WEIGH IN MOTION DETAILS

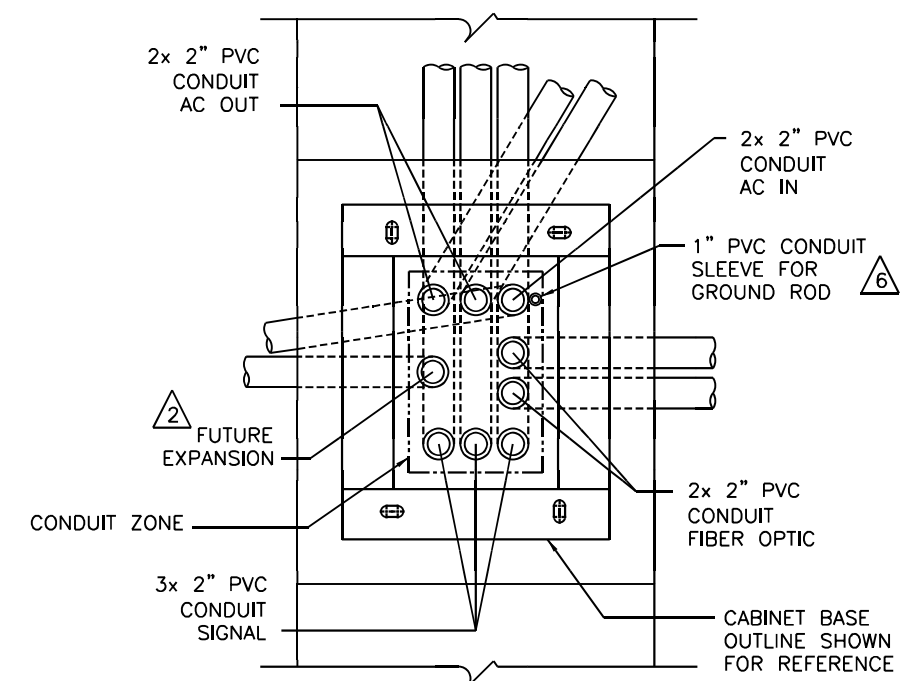
SCALE: N-T-S SHEET 11 OF 13 SHEETS STA. TO STA.

F.A.I. RTE.	SECTION	COUNTY	TOTAL SHEETS	SHEET NO.
64	D9 (97-2-1) WS-1	WHITE	22	20
CONTRACT NO. 78847			ILLINOIS FED. AID PROJECT	

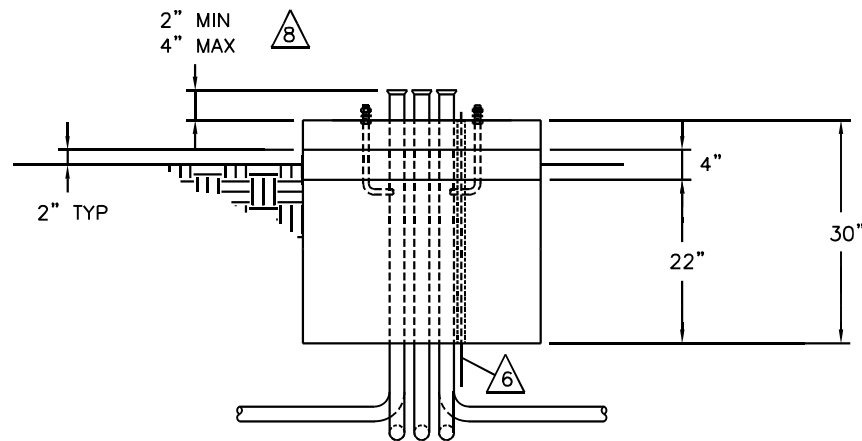
TOP VIEW - CABINET MOUNTING



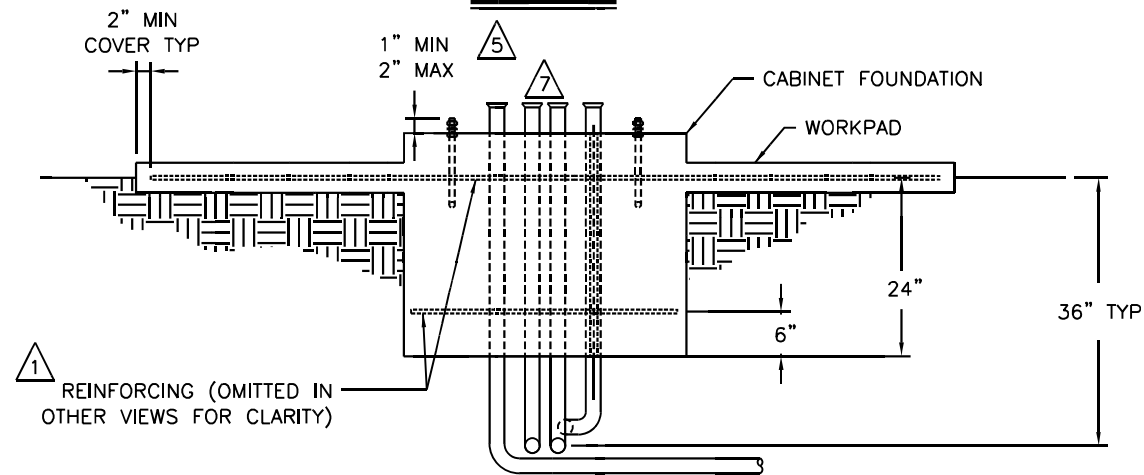
DETAIL A - MINIMUM CONDUITS



FRONT VIEW



SIDE VIEW



NOTES:

- 1 INSTALL REINFORCING MATS. #4 BAR 12" ON CENTER EACH WAY. EPOXY COAT OR GALVANIZE. REINFORCEMENTS ARE MINIMUM REQUIREMENTS AND MAY BE SUPERSEDED BY LOCAL CONSTRUCTION CODES.
- 2 SPARE CONDUIT MUST BE CAPPED, STUBBED 24" PAST FOUNDATION, AND LABELED.
- 3 ALL CONDUITS SHOWN SHALL BE FURNISHED AND INSTALLED IN FOUNDATION IN ACCORDANCE WITH LOCAL CODES. CAP IF NOT USED. ADDITIONAL CONDUITS MAY BE REQUIRED. CONDUITS SHALL EXIT FOUNDATION IN DIRECTION APPROPRIATE FOR SITE GEOMETRY.
- 4 CONCRETE SHALL HAVE COMPRESSIVE STRENGTH OF 3000 PSI MINIMUM.
- 5 CABINET ANCHORS MUST BE GALVANIZED OR STAINLESS STEEL AND MAY BE CAST IN PLACE, CHEMICAL OR EXPANSION TYPE DRILLED INTO BASE. TYPICAL SIZE IS 3/4" NC x 12" x 4".
- 6 GROUND ROD MUST BE PROVIDED TO MEET LOCAL ELECTRICAL CODE.
- 7 SEAL ALL CONDUIT ENDS WITH STEEL WOOL AND DUCT SEAL TO REDUCE RODENT OR INSECT INTRUSION AND MOISTURE. DO NOT USE PERMANENT SEALANT AS CONDUITS MAY NEED TO BE REENTERED IN THE FUTURE FOR CABLE REPLACEMENT OR ADDITIONS.

NOTES: (CONTINUED)

- 8 THE CABINET BASE CONDUIT MUST BE HIGHER THAN SURROUNDING PULL BOXES. THE HEIGHT OF CONDUITS ENDING IN THE CABINET MUST BE HIGHER THAN THE OTHER END TO PREVENT WATER ENTRY DUE TO HYDROSTATIC PRESSURE. ALL CONDUITS SHALL HAVE END BELLS INSTALLED OR NO SHARP EDGES.

CABINET FOUNDATION INSTALLATION

ABNA JOB NO. 28-6875



USER NAME = mconroy	DESIGNED - F. EPPERT	REVISED -
	DRAWN - M. CONROY	REVISED -
PLOT SCALE = 12x6.8783 'r' / ft.	CHECKED - A. BAH	REVISED -
PLOT DATE = 3/15/2021	DATE - 3/11/2021	REVISED -

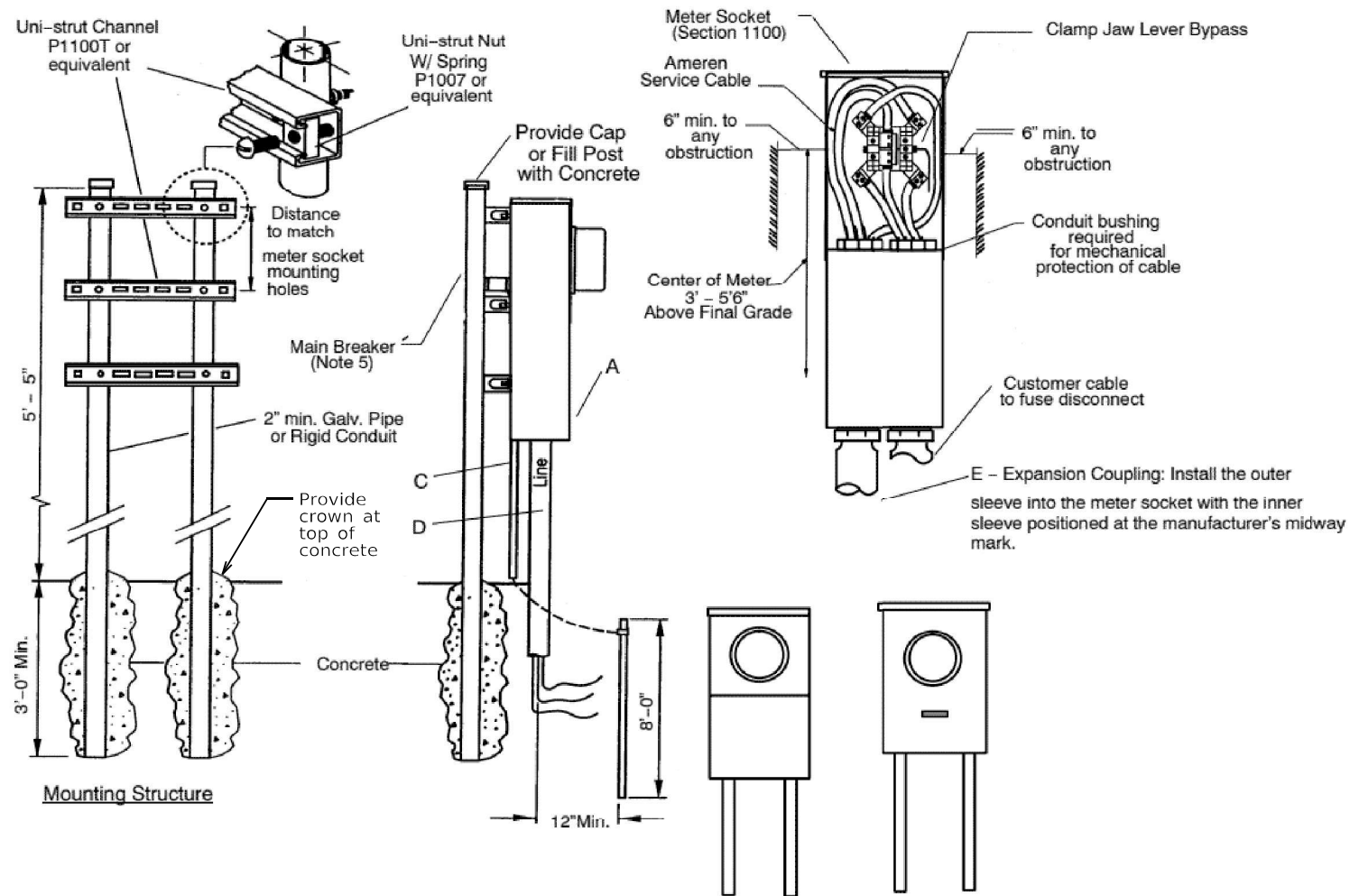
**STATE OF ILLINOIS
DEPARTMENT OF TRANSPORTATION**

WEIGH IN MOTION DETAILS

SCALE: N-T-5 SHEET 12 OF 13 SHEETS STA. TO STA.

F.A.I. RTE.	SECTION	COUNTY	TOTAL SHEETS	SHEET NO.
64	D9 (97-2-1) WS-1	WHITE	22	21
CONTRACT NO. 78847			ILLINOIS FED. AID PROJECT	

NOTE: COST INCLUDED IN SERVICE INSTALLATION, TYPE A (MODIFIED)



GENERAL NOTES:

THE INSTALLATION OF ALL ENTRANCE EQUIPMENT, CONDUCTORS AND CONDUIT SHALL CONFORM TO LOCAL CODES OR THE LATEST NEC REQUIREMENTS.

ALL MATERIAL SHALL BE FURNISHED AND INSTALLED BY CONTRACTOR.

NEC APPROVED GROUND REQUIRED.

DIFFERENT ARRANGEMENTS OF THE SERVICE EQUIPMENT (FUSE/BREAKER BOX) MAY BE USED SIDE-BY-SIDE OR BELOW METER.

REFER TO AMEREN SECTION 1100 FOR METER SOCKETS OR COMBO UNITS REQUIREMENT.

INSTRUMENT RATED METER SOCKETS IN IL: STOCK# 4054378 - 8 TERMINAL AND STOCK# 4054353-13 TERMINAL.

REFER TO AMEREN SECTION 200 FOR METER MOUNTING HEIGHT.

WHEN AN EXPANSION COUPLING IS REQUIRED, IT SHOULD BE INSTALLED SO THAT THE OUTER SLEEVE INTO THE METER SOCKET WITH THE INNER SLEEVE POSITIONED AT THE MANUFACTURER'S MIDWAY MARK.

**UNDERGROUND METER SERVICE /LOAD CENTER
AMEREN ELECTRIC METER REQUIRMENTS**

ABNA_JOB_NO. 28-6875



USER NAME = mconroy	DESIGNED - F. EPPERT	REVISED -
	DRAWN - M. CONROY	REVISED -
PLOT SCALE = 24.0000' / ft.	CHECKED - A. BAH	REVISED -
PLOT DATE = 3/15/2021	DATE - 3/11/2021	REVISED -

**STATE OF ILLINOIS
DEPARTMENT OF TRANSPORTATION**

WEIGH IN MOTION DETAILS

SCALE: N-T-S SHEET 13 OF 13 SHEETS STA. TO STA.

F.A.I. RTE.	SECTION	COUNTY	TOTAL SHEETS	SHEET NO.
64	D9 (97-2-1) WS-1	WHITE	22	22
CONTRACT NO. 78847			ILLINOIS FED. AID PROJECT	