

STATE OF ILLINOIS  
DEPARTMENT OF TRANSPORTATION

RTE.	SECTION	COUNTY	TOTAL SHEETS	SHEET NO.
*	D9 BRIDGE REPAIR 2021-1	**	12	1
		ILLINOIS	CONTRACT NO. 78870	

\* IL 148 (FAP 726)  
IL 37 (FAS 2887)      \*\* JEFFERSON  
WILLIAMSON  
D-99-048-21

FOR INDEX OF SHEETS, SEE SHEET NO. 3  
FOR SUMMARY OF QUANTITIES, SEE SHEET NO. 4 & 5

**PROPOSED  
HIGHWAY PLANS**

FAP ROUTE 726 (IL 148) / FAS ROUTE 2887 (IL 37)  
SECTION D9 BRIDGE REPAIR 2021-1  
BRIDGE REPAIRS  
JEFFERSON / WILLIAMSON COUNTY

**TRAFFIC DATA**

SN 041-0096 2019 ADT = 3650  
5.2 % TRUCKS  
SN 100-0072 2019 ADT = 4650  
10.8 % TRUCKS

**TOWNSHIPS**

SN 041-0096 ELK PRAIRIE  
SN 100-0072 WEST MARION

POSTED SPEED : IL 148: 55 MPH  
IL 37: 35 MPH SB / 55 MPH NB

J.U.L.I.E.  
JOINT UTILITY LOCATION INFORMATION FOR EXCAVATION  
1-800-892-0123  
OR 811

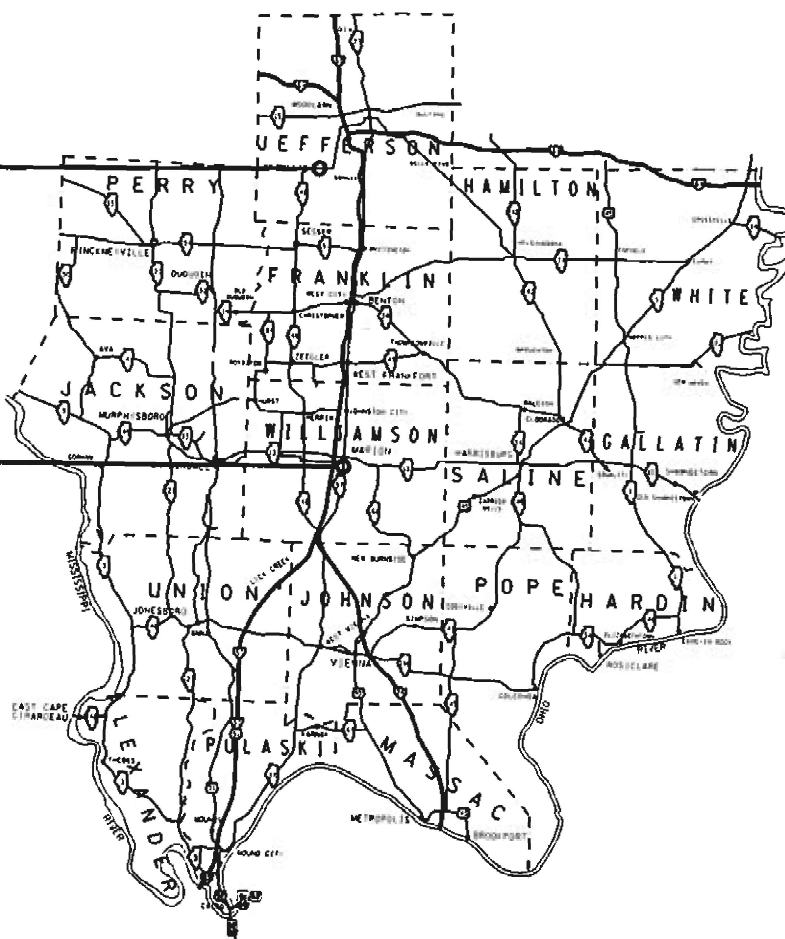
PROJECT ENGINEER: MIKE STEPHENSON  
PROJECT DESIGNER: NATHANIEL MORRIS

CONTRACT NO. 78870

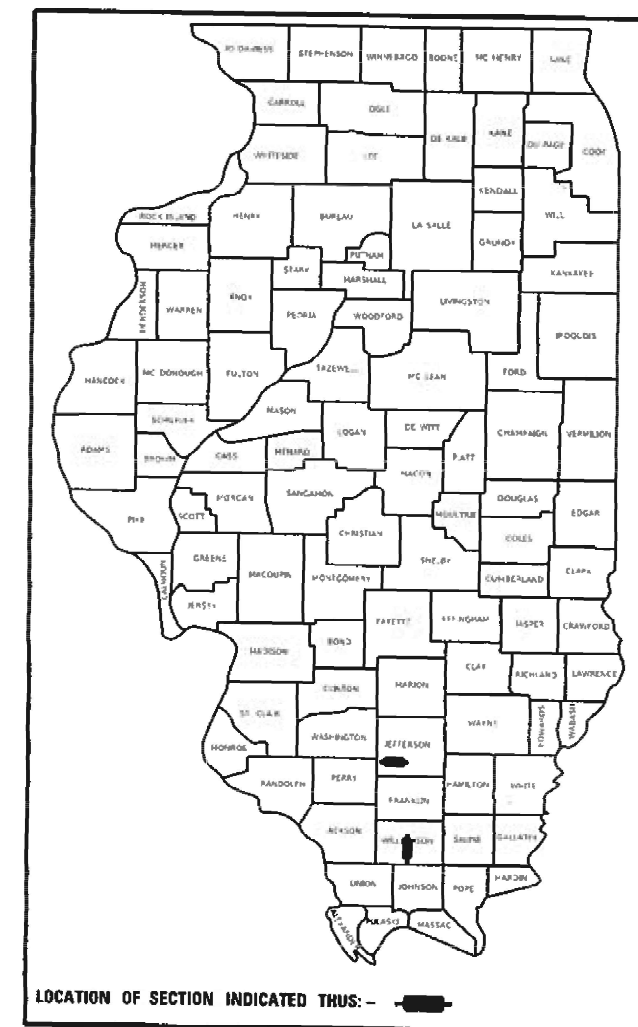
C-99-064-21

SN 041-0096  
OVER BIG MUDDY RIVER

SN 100-0072  
OVER CRAB ORCHARD CREEK



GROSS LENGTH = 491.0 FT. = .09 MILES  
NET LENGTH = 491.0 FT. = .09 MILES



STATE OF ILLINOIS  
DEPARTMENT OF TRANSPORTATION

SUBMITTED 03-15-2021  
*[Signature]*  
REGION FIVE ENGINEER

May 7, 2021  
*[Signature]*  
ENGINEER OF DESIGN AND ENVIRONMENT

May 7, 2021  
*[Signature]*  
DIRECTOR OF HIGHWAYS PROJECT IMPLEMENTATION

PRINTED BY THE AUTHORITY  
OF THE STATE OF ILLINOIS

MOORE | Default  
FILE NAME: \\s01m001s01\illinois\p01\p100\Documents\DOT - Office\District - 9\Project\578870\CADD\AutoCAD\Drawings\0978870-Sheets.dwg

Prepared By: Charles Stein  
DISTRICT STUDIES & PLANS ENGINEER

Examined By: Nancy H...  
DISTRICT LAND ACQUISITION ENGINEER

Examined By: Carm Nelson  
DISTRICT PROGRAM DEVELOPMENT ENGINEER

Examined By: Kelley...  
DISTRICT OPERATIONS ENGINEER

Examined By: KRO  
DISTRICT PROJECT IMPLEMENTATION ENGINEER

Examined By: Daryl...  
DISTRICT CONSTRUCTION ENGINEER

Examined By: [Signature]  
DISTRICT MATERIALS ENGINEER

\* IL 148 (FAP 726) \*\* JEFFERSON  
IL 37 (FAS 2887) WILLIAMSON

USER NAME = marrisnr	DESIGNED - _____	REVISED - _____
DRAWN - _____	REVISIONS - _____	REVISIONS - _____
PLOT SCALE = 100.0000' / in.	CHECKED - _____	REVISIONS - _____
PLOT DATE = 2/24/2021	DATE - _____	REVISIONS - _____

**STATE OF ILLINOIS  
DEPARTMENT OF TRANSPORTATION**

**SIGNATURE SHEET**

SCALE: \_\_\_\_\_ SHEET \_\_\_\_\_ OF \_\_\_\_\_ SHEETS STA. \_\_\_\_\_ TO STA. \_\_\_\_\_

ROUTE	SECTION	COUNTY	TOTAL SHEETS	SHEET NO.
*	D9 BRIDGE REPAIR 2021-1	**	12	2
			CONTRACT NO. 78870	
ILLINOIS FED. AID PROJECT				

**INDEX OF SHEETS**

- 1. COVER SHEET
- 2. SIGNATURE SHEET
- 3. INDEX OF SHEETS, HIGHWAY STANDARDS, GENERAL NOTES
- 4-5. SUMMARY OF QUANTITIES
- 6. STAGE CONSTRUCTION PLAN SN 100-0072
- 7. BRIDGE REPAIR PLANS: 100-0072
- 8. SN 100-0072 BRIDGE DECK PATCHING
- 9. SN 100-0072 SUBSTRUCTURE REPAIRS
- 10-11. BRIDGE REPAIR PLANS: 041-0096
- 12. SN 041-0096 SUBSTRUCTURE REPAIRS

**GENERAL NOTES**

COMMITMENTS: NONE

**HIGHWAY STANDARDS**

- 000001-08 STANDARD SYMBOLS ABBREVIATIONS & PATTERNS
- 001001-02 AREAS OF REINFORCEMENT BARS
- 701001-02 OFF ROAD OPERATIONS 2L2W MORE THAN 15 FT FROM EOP
- 701006-05 OFF ROAD OPERATIONS 2L2W LESS THAN 15 FT FROM EOP
- 701201-05 LANE CLOSURE 2L2W DAY ONLY
- 701316-13 LANE CLOSURE 2L2W BRIDGE REPAIR SPEEDS 45 MPH OR MORE
- 701901-08 TRAFFIC CONTROL DEVICES

\* IL 148 (FAP 726)  
IL 37 (FAS 2887)

\*\* JEFFERSON  
WILLIAMSON

MODEL: Default  
 FILE NAME: p:\jhamerson\dot\illinois\p\WIDOT\Documents\DOT\_Offices\Distct\_9\Projects\28870\CAD\Bak\Index\07\_28870\_Sheets.dgn

USER NAME = morrisnt PLOT SCALE = 100.0000' / in. PLOT DATE = 4/21/2021	DESIGNED - _____	REVISED - _____	<b>STATE OF ILLINOIS DEPARTMENT OF TRANSPORTATION</b>	<b>INDEX OF SHEETS, HIGHWAY STANDARDS, &amp; GENERAL NOTES</b>	RT.	SECTION	COUNTY	TOTAL SHEETS	SHEET NO.
	DRAWN - _____	REVISED - _____			*	D9 BRIDGE REPAIR 2021-1	**	12	3
	CHECKED - _____	REVISED - _____			CONTRACT NO. 78870				
DATE - _____	REVISED - _____	SCALE: _____	SHEET _____ OF _____ SHEETS	STA. _____ TO STA. _____	ILLINOIS FED. AID PROJECT				

# SUMMARY OF QUANTITIES

COUNTY:	JEFFERSON CO	WILLIAMSON CO
ROUTE:	FAP 726 (IL 148)	FAS 2887 (IL 37)
FUNDING:	100% STATE	100% STATE
LOCATION:	RURAL	RURAL
	SN 041-0096	SN 100-0072
	0013	0013

CODE NUMBER	ITEM DESCRIPTION	UNIT	TOTAL QUANTITY	JEFFERSON CO	WILLIAMSON CO
35400500	PORTLAND CEMENT CONCRETE BASE COURSE WIDENING 10"	SQ YD	244		244
44004250	PAVED SHOULDER REMOVAL	SQ YD	244		244
58700300	CONCRETE SEALER	SQ FT	292	234	58
59000200	EPOXY CRACK INJECTION	FOOT	60	30	30
67000400	ENGINEER'S FIELD OFFICE, TYPE A	CAL MO	2	1	1
67100100	MOBILIZATION	L SUM	1	0.5	0.5
70100100	TRAFFIC CONTROL AND PROTECTION, STANDARD 701316	EACH	1		1
70100450	TRAFFIC CONTROL AND PROTECTION, STANDARD 701201	L SUM	1	0.5	0.5
70103815	TRAFFIC CONTROL SURVEILLANCE	CAL DA	4		4
70106500	TEMPORARY BRIDGE TRAFFIC SIGNALS	EACH	1		1
70107025	CHANGEABLE MESSAGE SIGN	CAL DA	56	28	28
70300220	TEMPORARY PAVEMENT MARKING - LINE 4"	FOOT	2,110		2,110

REV. - MS

\* IL 148 (FAP 726)  
IL 37 (FAS 2887)

\*\* JEFFERSON  
WILLIAMSON

MODEL: Default  
 FILE NAME: P:\jhamerson\dat\illinois\p\DOT\Documents\DOT\_Offices\District\_9\Projects\78870\CADD\Drawings\DOT\_78870\_Sheets.dgn

USER NAME = morrisnt	DESIGNED - _____	REVISED - _____
	DRAWN - _____	REVISED - _____
PLOT SCALE = 100.0000' / in.	CHECKED - _____	REVISED - _____
PLOT DATE = 3/18/2021	DATE - _____	REVISED - _____

**STATE OF ILLINOIS  
DEPARTMENT OF TRANSPORTATION**

**SUMMARY OF QUANTITIES**

SCALE: \_\_\_\_\_ SHEET \_\_\_\_\_ OF \_\_\_\_\_ SHEETS STA. \_\_\_\_\_ TO STA. \_\_\_\_\_

RTE.	SECTION	COUNTY	TOTAL SHEETS	SHEET NO.
*	D9 BRIDGE REPAIR 2021-1	**	12	4
CONTRACT NO. 78870				
ILLINOIS FED. AID PROJECT				



# SUMMARY OF QUANTITIES - CONT

COUNTY:	JEFFERSON CO	WILLIAMSON CO
ROUTE:	FAP 726 (IL 148)	FAS 2887 (IL 37)
FUNDING:	100% STATE	100% STATE
LOCATION:	RURAL	RURAL
	SN 041-0096	SN 100-0072
	0013	0013

CODE NUMBER	ITEM DESCRIPTION	UNIT	TOTAL QUANTITY	JEFFERSON CO	WILLIAMSON CO
* 78001110	PAINT PAVEMENT MARKING - LINE 4"	FOOT	1,097		1,097
78300201	PAVEMENT MARKING REMOVAL - GRINDING	SQ FT	365		365
* 86200300	UNINTERRUPTABLE POWER SUPPLY, EXTENDED	EACH	1		1
X0325747	BRIDGE DECK CONCRETE CRACK SEALER	FOOT	2,000		2,000
X0325748	ACRYLIC COATING	SQ YD	77	40	37
X0325749	FIBER WRAP	SQ FT	948	438	510
X0326331	CLEANING AND PAINTING BEARINGS	EACH	56	20	36
X7030005	TEMPORARY PAVEMENT MARKING REMOVAL	SQ FT	696		696
Z0012754	STRUCTURAL REPAIR OF CONCRETE (DEPTH EQUAL TO OR LESS THAN 5 INCHES)	SQ FT	292	234	58
Z0016200	DECK SLAB REPAIR (PARTIAL)	SQ YD	18		18
Z0043800	PRECAST PRESTRESSED CONCRETE I-BEAM REPAIR	SQ FT	138	138	
Z0073200	TEMPORARY SHORING AND CRIBBING	EACH	8	8	

\* SPECIALTY ITEM

REV. - MS

\* IL 148 (FAP 726)  
IL 37 (FAS 2887)

\*\* JEFFERSON  
WILLIAMSON

MODEL: Default  
 FILE: \\harcam\com\data\illinois\pms\PIWDOT\Documents\DOT\_Offices\District\_9\Projects\78870\CADD\Drawings\0778870-Sheets.dgn

USER NAME = morr/snt	DESIGNED - _____	REVISED - _____
PLOT SCALE = 100.0000' / in.	DRAWN - _____	REVISD - _____
PLOT DATE = 3/18/2021	CHECKED - _____	REVISD - _____
	DATE - _____	REVISD - _____

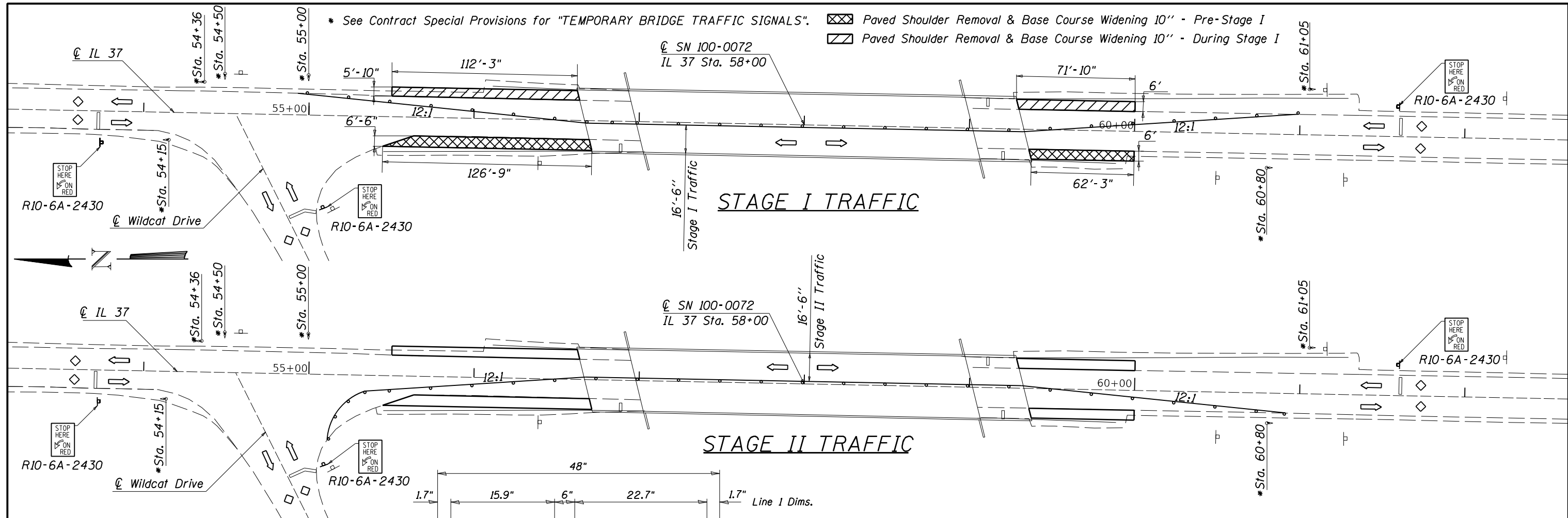
**STATE OF ILLINOIS  
DEPARTMENT OF TRANSPORTATION**

**SUMMARY OF QUANTITIES CONTINUED**

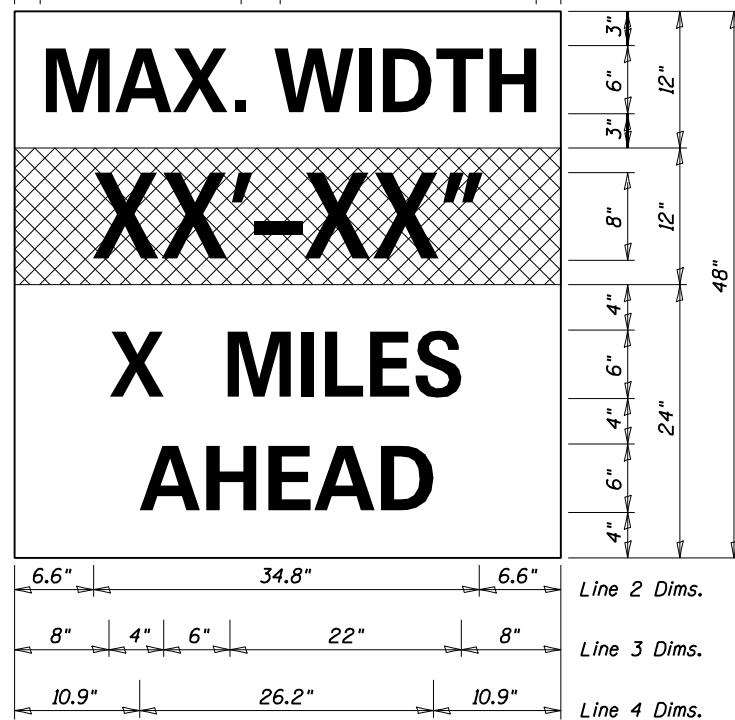
SCALE: \_\_\_\_\_ SHEET \_\_\_\_\_ OF \_\_\_\_\_ SHEETS STA. \_\_\_\_\_ TO STA. \_\_\_\_\_

RTE.	SECTION	COUNTY	TOTAL SHEETS	SHEET NO.
*	D9 BRIDGE REPAIR 2021-1	**	12	5
CONTRACT NO. 78870				
ILLINOIS FED. AID PROJECT				

MOEFL - Default  
FILE NAME: p:\pub\barconson.dwg  
PROJECT: 78870\CADD\Drawings\DOT - Office\Drawings\9 Projects\78870\CADD\Drawings\DOT\78870-Sheets.dwg



\* See Contract Special Provisions for "TEMPORARY BRIDGE TRAFFIC SIGNALS".  
[Cross-hatched box] Paved Shoulder Removal & Base Course Widening 10" - Pre-Stage I  
[Hatched box] Paved Shoulder Removal & Base Course Widening 10" - During Stage I



**W12-1103**  
W12-1103, No Border  
"MAX WIDTH" 6D, No Border, Black on White  
"XX'-XX"" 8D, No Border, Black on Orange  
"X MILES" 6D, No Border, Black on White  
"AHEAD" 6D, No Border, Black on White

Notes for Max Width Sign:

1. Install a Max Width Sign each direction on IL 37 to give traffic approaching work zone enough advance notice to change routes if needed. Exact locations as directed by engineer.
2. The contractor shall furnish the posts and erect the signs at the locations directed by the engineer. All signs shall be post mounted.
3. The noted work, including signs, posts, hardware and labor shall be included in the contract unit price, each, for Traffic Control and Protection, Std. 701316, no other compensation will be allowed.
4. The width shown on the W12-1103 sign shall be 18" less than what is shown in the staged lane widths or as directed by the Engineer.
5. The "X" MILES AHEAD will be determined by the engineer.

\*\*IL 148 (FAP 726) \*\*\*JEFFERSON  
IL 37 (FAS 2887) WILLIAMSON

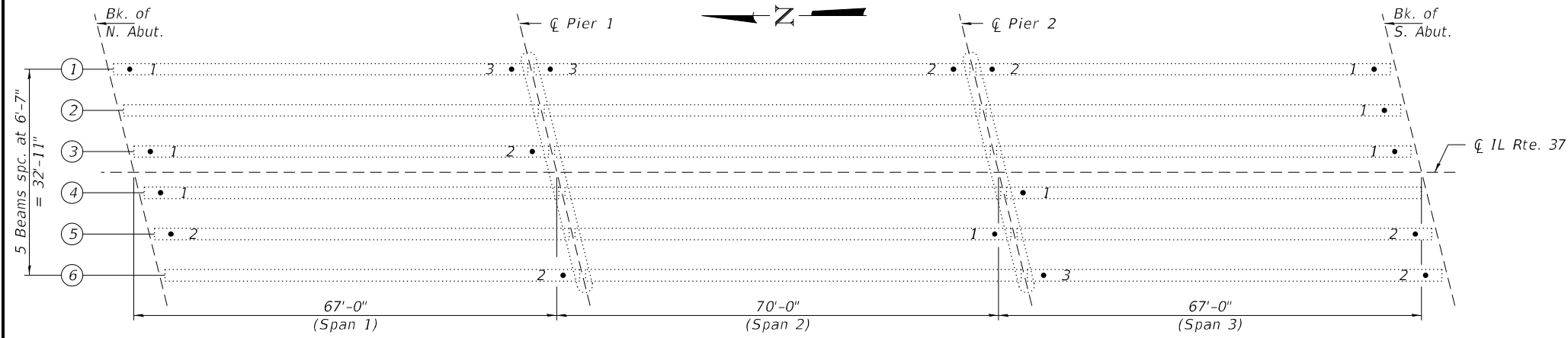
USER NAME = morrisnt	DESIGNED - _____	REVISED - _____
DRAWN - _____	REVISIONS - _____	REVISIONS - _____
PLOT SCALE = 60.0000' / in.	CHECKED - _____	REVISIONS - _____
PLOT DATE = 3/16/2021	DATE - _____	REVISIONS - _____

**STATE OF ILLINOIS  
DEPARTMENT OF TRANSPORTATION**

**STAGE CONSTRUCTION PLAN  
SN 100-0072**

SCALE: \_\_\_\_\_ SHEET \_\_\_\_\_ OF \_\_\_\_\_ SHEETS STA. \_\_\_\_\_ TO STA. \_\_\_\_\_

RTE.	SECTION	COUNTY	TOTAL SHEETS	SHEET NO.
**	D9 BRIDGE REPAIR 2021-1	***	12	6
CONTRACT NO. 78870				
ILLINOIS FED. AID PROJECT				

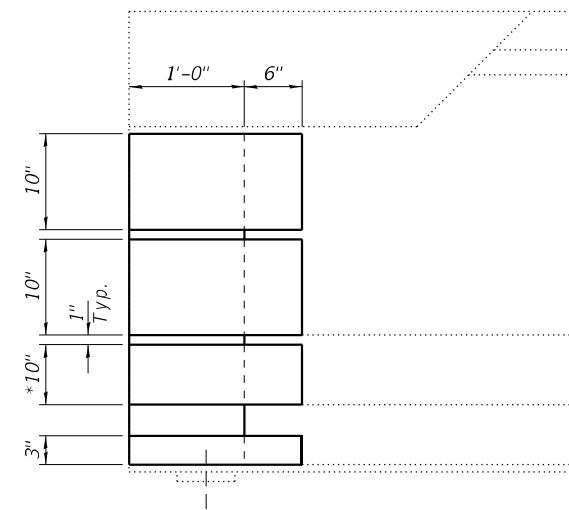


**FRAMING PLAN**

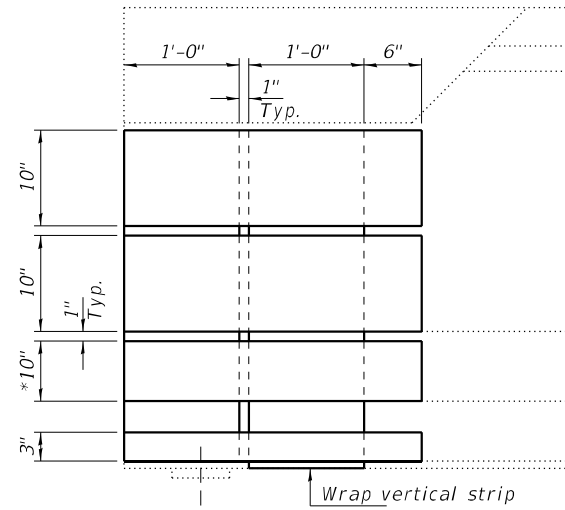
• # - Repair location with Repair Type Number

**GENERAL NOTES**

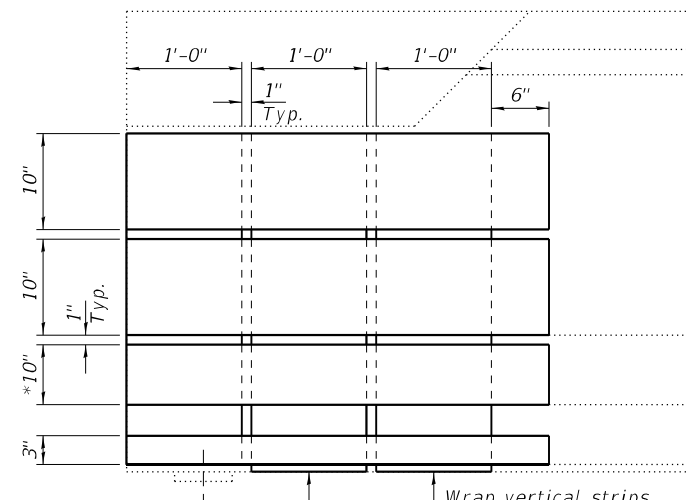
All structural steel shall conform to AASHTO Classification M-270 Gr. 36, unless otherwise noted.  
 Plan dimensions and details relative to existing plans are subject to nominal construction variations. The Contractor shall field verify existing dimensions and details affecting new construction and make necessary approved adjustments prior to construction or ordering of materials. Such variations shall not be cause for additional compensation for a change in scope of the work, however, the Contractor will be paid for the quantity actually furnished at the unit price bid for the work.  
 The Contractor shall use extreme care during concrete removal so as not to damage the PPC I-Beam.  
 The existing concrete surface shall be cleaned and prepared in accordance with the Special Provisions.  
 See Special Provisions for "FRP Strengthening for PPC I-Beam Repairs".  
 See Special Provisions for "Precast Prestressed Concrete I-Beam Repair".  
 Acrylic coating shall be placed over Fiber Wrap repairs. Two coats shall be applied.  
 Reinforcement bars designated (E) shall be epoxy coated.



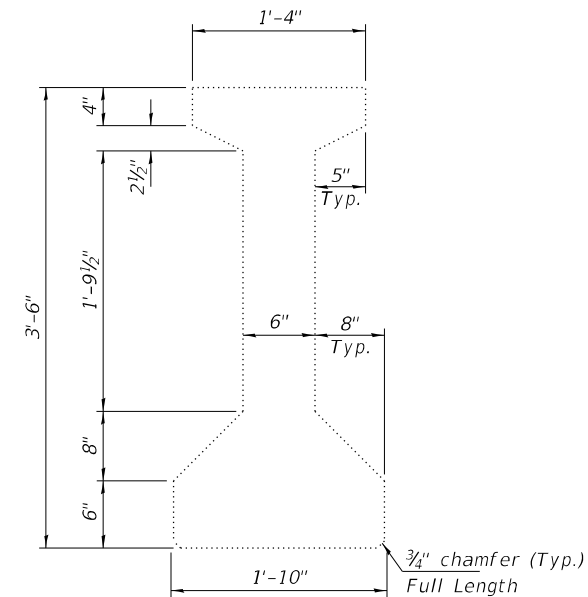
**REPAIR TYPE 1**  
(8 Required)



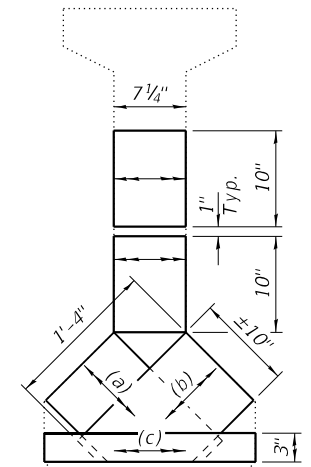
**REPAIR TYPE 2**  
(7 Required)



**REPAIR TYPE 3**  
(3 Required)



**CROSS SECTION**  
(Showing Dimensions)

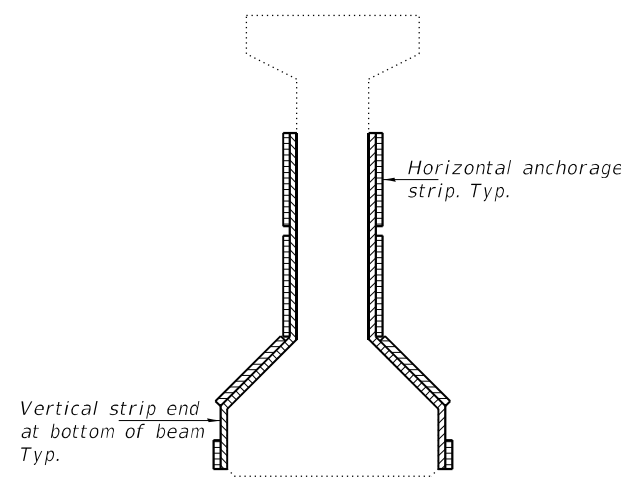


**FRP TREATMENT AT END OF BEAM**

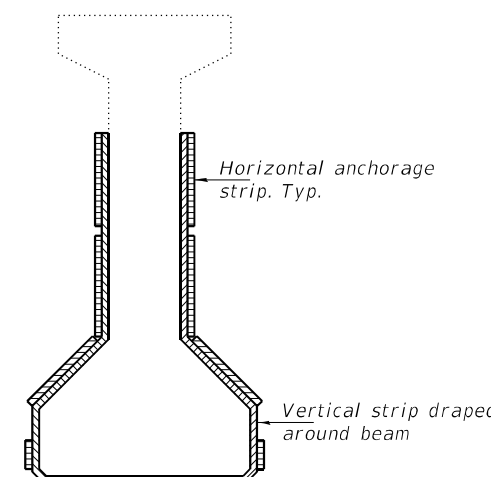
Note:  
Place FRP in the following order (a), (b) and (c).

direction  
FRP

\* Along sloped surface



**SECTION THRU BEARING**



**SECTION OUTSIDE BEARING**

**TOTAL BILL OF MATERIAL**

ITEM	UNIT	QUANTITY
Bridge Deck Concrete Crack Sealer	Foot	2000
Concrete Sealer	Sq. Ft.	58
Fiber Wrap	Sq. Ft.	510
Acrylic Coating	Sq. Yd.	37
Structural Repair of Concrete (Depth ≤ 5")	Sq. Ft.	58
Deck Slab Repair (Partial Depth)	Sq. Yd.	18
Cleaning and Painting Bearings	Each	36
Epoxy Crack Injection	Foot	30



EXPIRES 11-30-2022

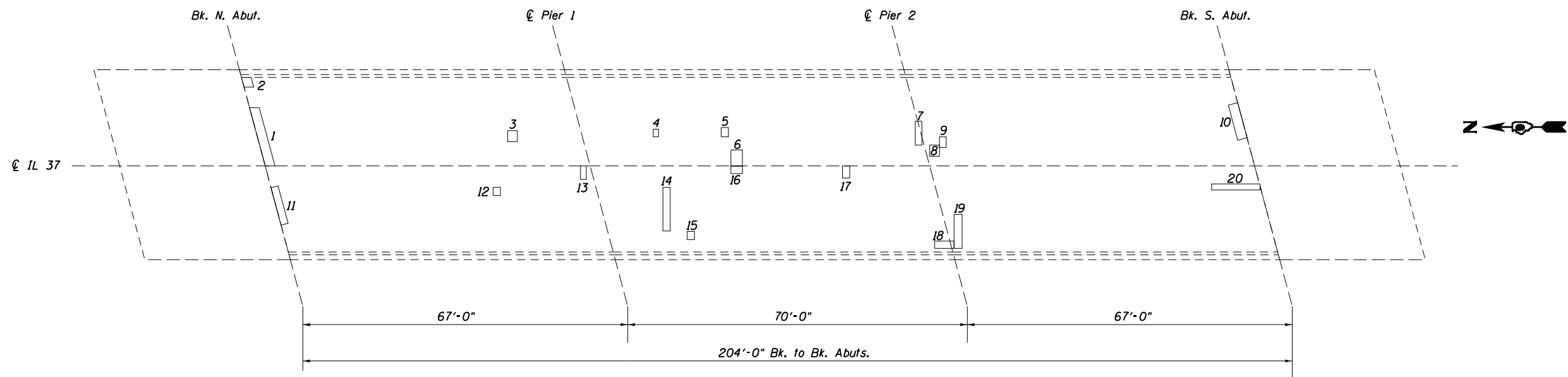
DESIGNED - Victor H. Veliz	EXAMINED - <i>Ting A. Beck</i>	DATE - APRIL 21, 2021
CHECKED - Adrian T. Halloway	ENGINEER OF STRUCTURAL SERVICES	
DRAWN - Venkat Ramana Reddy	PASSED - <i>Dr. Carl Puzey</i>	REVISED -
CHECKED - VHV ATH	ENGINEER OF BRIDGES AND STRUCTURES	REVISED -

**STATE OF ILLINOIS**  
**DEPARTMENT OF TRANSPORTATION**

**FRP REPAIR DETAILS**  
**SN 100-0072**

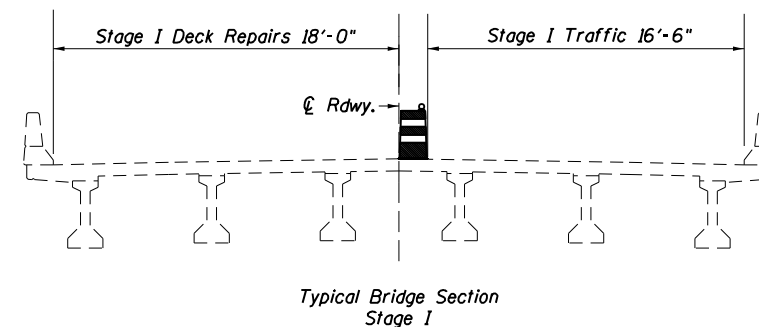
SHEET NO. 1 OF 1 SHEETS

F.A.P. RTE.	SECTION	COUNTY	TOTAL SHEETS	SHEET NO.
2887	D9 Bridge Repair 2021-1	WILLIAMSON	12	7
CONTRACT NO. - 78870				
ILLINOIS FED. AID PROJECT				

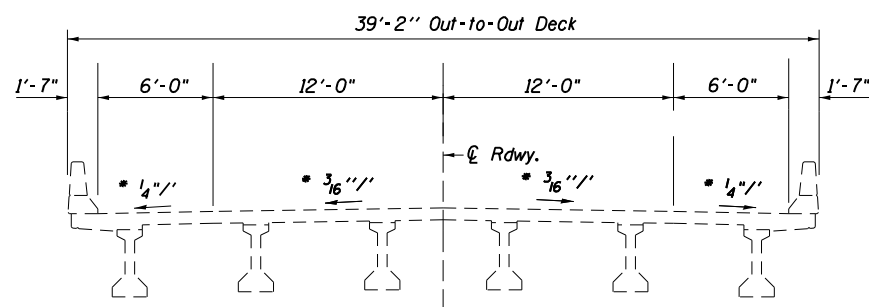


Deck Slab Repair (Partial Depth)

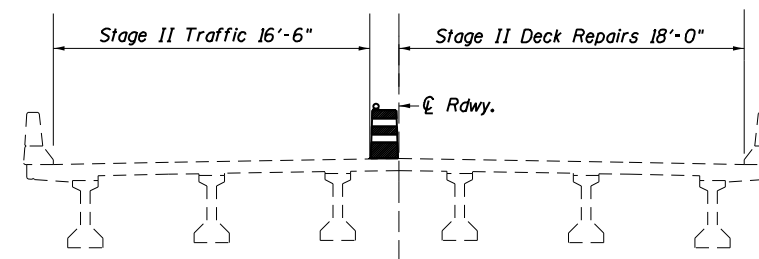
NUMBER	LENGTH (FT)	WIDTH (FT)	AREA (SQ YD)
1	2.0	12.0	2.7
2	2.0	2.0	0.5
3	2.0	2.3	0.5
4	1.1	1.6	0.2
5	1.5	1.9	0.3
6	2.4	3.3	0.9
7	1.4	4.9	0.8
8	2.3	2.0	0.5
9	1.4	2.2	0.4
10	2.0	7.5	1.7
11	1.5	8.0	1.3
12	1.5	1.7	0.3
13	1.2	2.8	0.4
14	1.5	9.0	1.5
15	1.5	1.7	0.3
16	2.4	1.6	0.4
17	1.5	2.5	0.4
18	4.0	1.5	0.7
19	1.7	7.0	1.3
20	10.0	1.2	1.3



Typical Bridge Section Stage I



Typical Bridge Section



Typical Bridge Section Stage II

Notes: Deck sounding was performed in May 2020  
 The Resident Engineer will determine final patch locations and quantities in the field before bridge deck patching operations begin.  
 All sections are Looking South.

**BILL OF MATERIAL**

Item	Unit	Total
Deck Slab Repair (Partial Depth)	Sq Yd	16.3
* Bridge Deck Concrete Crack Sealer	Foot	2000

\* Estimated Quantity

**DECK SLAB REPAIRS  
 STRUCTURE NO. 100-0072**

\*IL 148 (FAP 726) \*\*JEFFERSON  
 IL 37 (FAS 2887) WILLIAMSON

MODEL: Default  
 FILE: \\mdepc-p01\pub\arcom\dat\illinois\p01\DOT\Documents\DOT\_Offices\District\_9\Projects\78870\CADD\Drawings\07-78870-Sheets.dwg  
 PLOT DATE = 4/22/2021

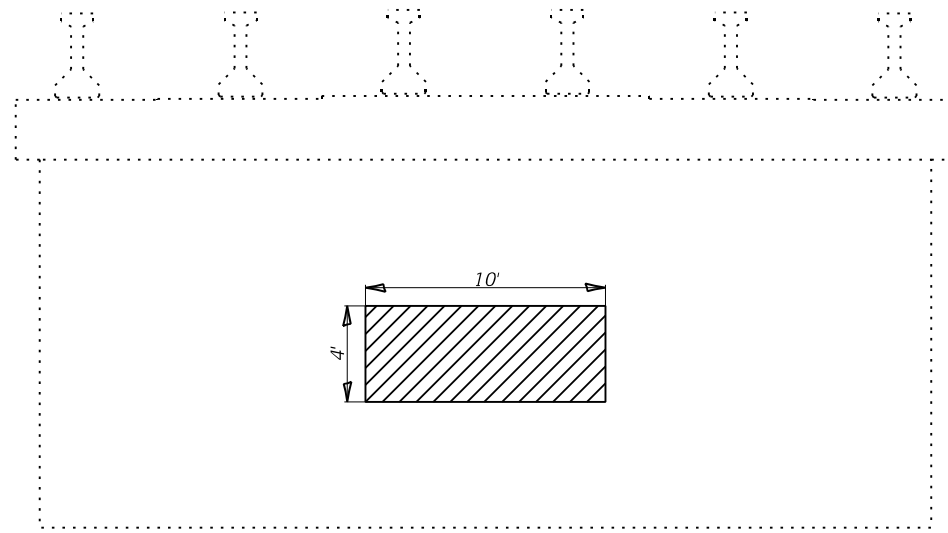
USER NAME = morrisnt	DESIGNED -	REVISED -
	DRAWN -	REVISED -
PLOT SCALE = 100.0000' / in.	CHECKED -	REVISED -
PLOT DATE = 4/22/2021	DATE -	REVISED -

**STATE OF ILLINOIS  
 DEPARTMENT OF TRANSPORTATION**

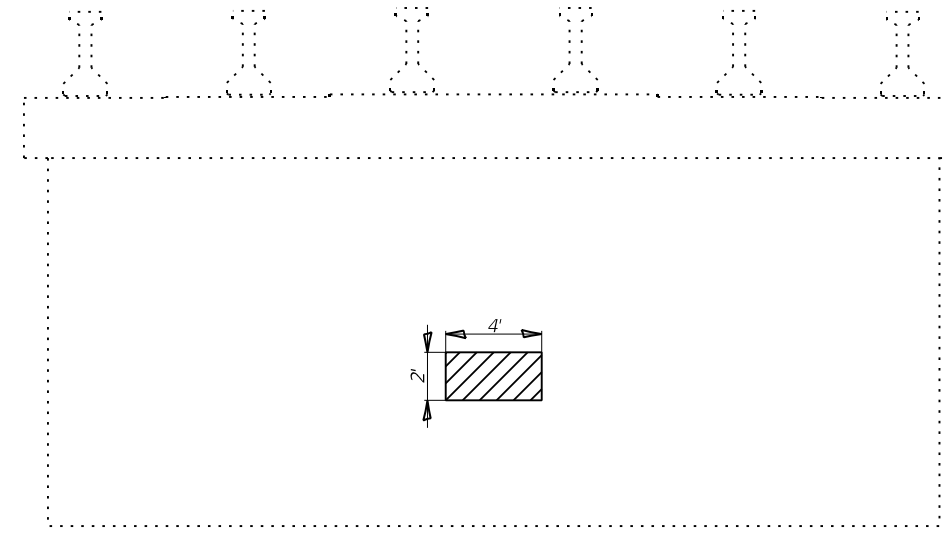
**SN 100-0072 PATCHING SURVEY  
 TYPICAL SECTION**

SCALE: SHEET OF SHEETS STA. TO STA.

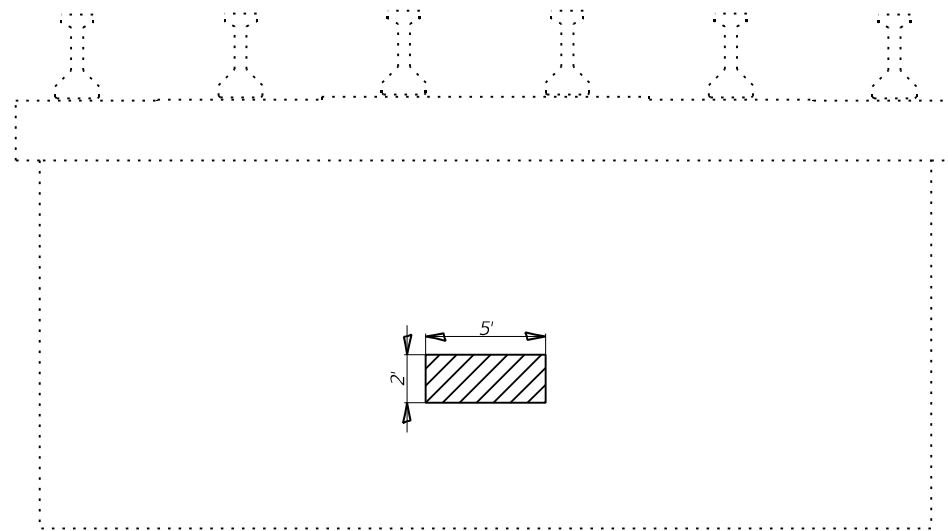
RTE.	SECTION	COUNTY	TOTAL SHEETS	SHEET NO.
*	D9 BRIDGE REPAIR 2021-1	**	12	8
CONTRACT NO. 78870				
ILLINOIS FED. AID PROJECT				



NORTH FACE PIER 1  
LOOKING SOUTH



NORTH FACE PIER 2  
LOOKING SOUTH



SOUTH FACE PIER 1  
LOOKING NORTH

**BILL OF MATERIAL**

ITEM	UNIT	TOTAL
Structural repair of concrete (Depth ≤ 5 Inches)	Sq. Ft.	58

 STRUCTURAL REPAIR OF CONCRETE ≤ 5"

\*IL 148 (FAP 726)  
IL 37 (FAS 2887)

\*\* JEFFERSON  
WILLIAMSON

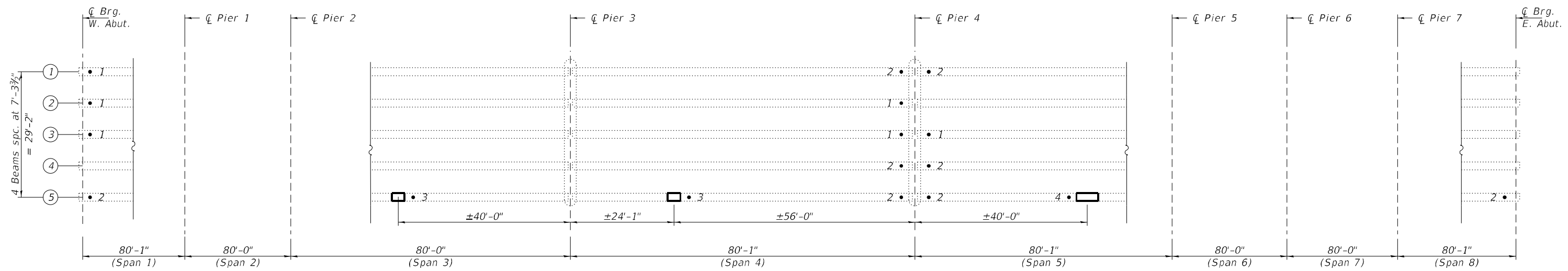
MODEL: Copy of Default  
 FILE NAME: p:\g1\mason\mason.dwg  
 PROJECT: 78870\CADD\Drawings\DOT Office\Drawings\78870\CADD\Drawings\78870-Sheets.dwg

USER NAME = porterc	DESIGNED - _____	REVISED - _____
PLOT SCALE = 8.0000' / in.	DRAWN - _____	REVISED - _____
PLOT DATE = 3/16/2021	CHECKED - _____	REVISED - _____
	DATE - _____	REVISED - _____

**STATE OF ILLINOIS**  
**DEPARTMENT OF TRANSPORTATION**

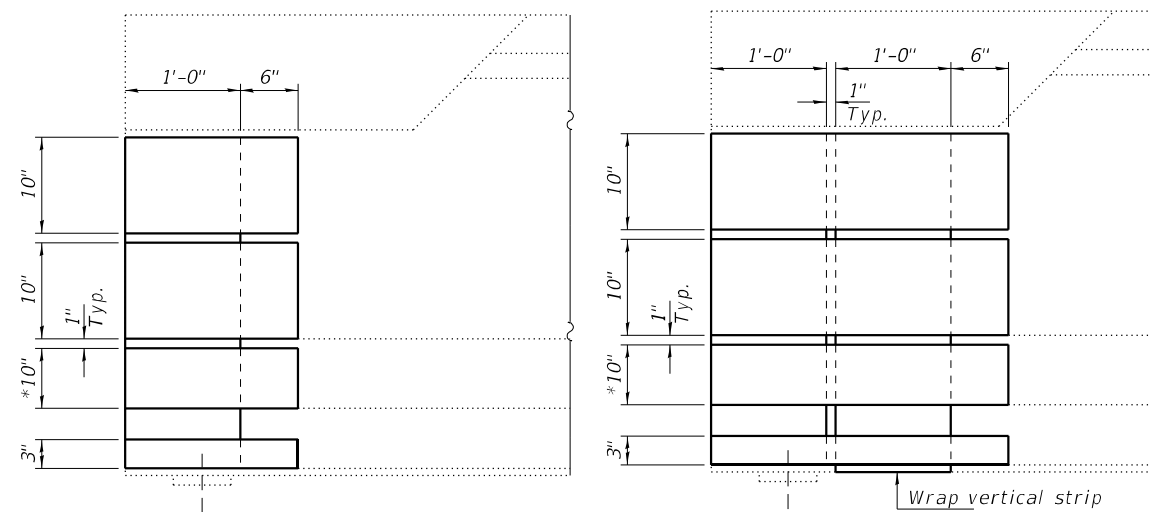
<b>SUBSTRUCTURE REPAIRS</b>	
<b>SN 100-0072</b>	
SCALE: _____	SHEET _____ OF _____ SHEETS
STA. _____	TO STA. _____

RT.	SECTION	COUNTY	TOTAL SHEETS	SHEET NO.
*	D9 BRIDGE REPAIR 2021-1	**	12	9
				CONTRACT NO. 78870
ILLINOIS FED. AID PROJECT				



**FRAMING PLAN**

• # - Repair location with Repair Type Number

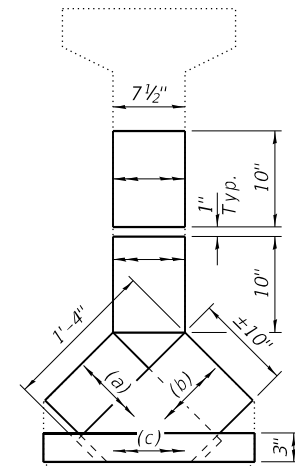


**REPAIR TYPE 1**  
(6 Required)

\* Along sloped surface

**REPAIR TYPE 2**  
(8 Required)

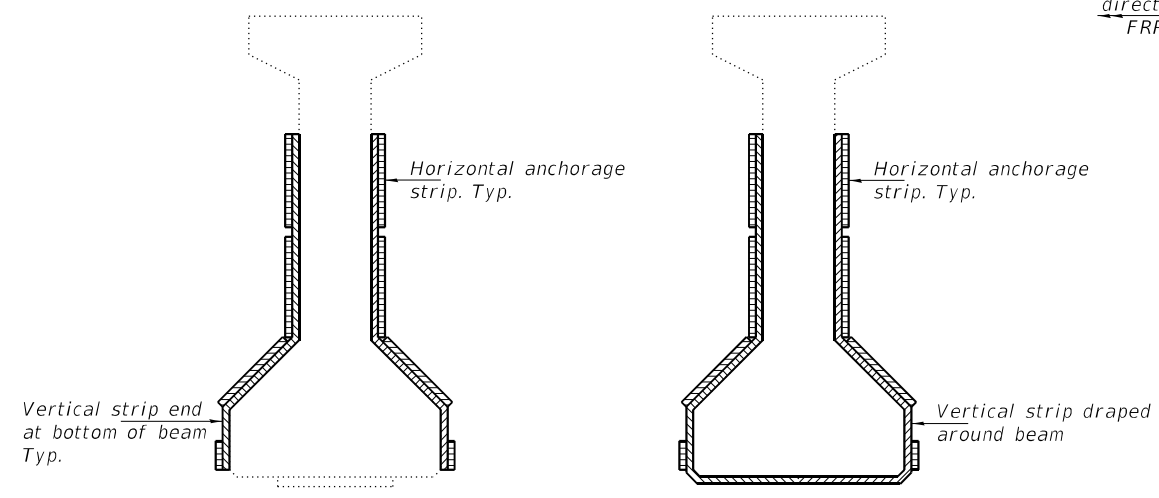
Wrap vertical strip under beam



**FRP TREATMENT AT END OF BEAM**

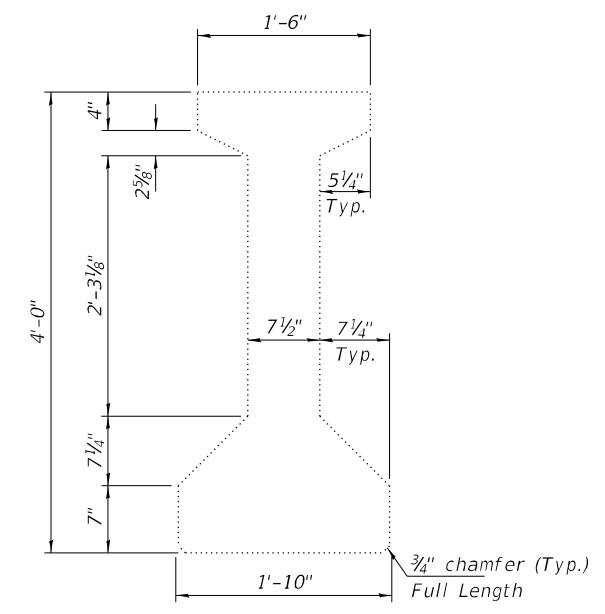
Note:  
Place FRP in the following order (a), (b) and (c).

direction FRP



**SECTION THRU BEARING**

**SECTION OUTSIDE BEARING**



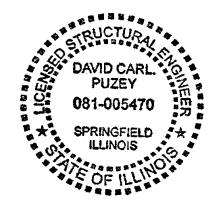
**CROSS SECTION**  
(Showing Dimensions)

**GENERAL NOTES**

All structural steel shall conform to AASHTO Classification M-270 Gr. 36, unless otherwise noted.  
Plan dimensions and details relative to existing plans are subject to nominal construction variations. The Contractor shall field verify existing dimensions and details affecting new construction and make necessary approved adjustments prior to construction or ordering of materials. Such variations shall not be cause for additional compensation for a change in scope of the work, however, the Contractor will be paid for the quantity actually furnished at the unit price bid for the work.  
The Contractor shall use extreme care during concrete removal so as not to damage the PPC I-Beam.  
The existing concrete surface shall be cleaned and prepared in accordance with the Special Provisions.  
See Special Provisions for "FRP Strengthening for PPC I-Beam Repairs".  
See Special Provisions for "Precast Prestressed Concrete I-Beam Repair".  
Acrylic coating shall be placed over Fiber Wrap repairs. Two coats shall be applied.  
Reinforcement bars designated (E) shall be epoxy coated.

**TOTAL BILL OF MATERIAL**

ITEM	UNIT	QUANTITY
Concrete Sealer	Sq. Ft.	234
Fiber Wrap	Sq. Ft.	438
Acrylic Coating	Sq. Yd.	40
Precast Prestressed Concrete I-Beam Repair	Sq. Ft.	138
Structural Repair of Concrete (Depth ≤ 5")	Sq. Ft.	234
Temporary Shoring and Cribbing	Each	8
Epoxy Crack Injection	Foot	30
Cleaning and Painting Bearings	Each	20



EXPIRES 11-30-2022

DESIGNED - Victor H. Veliz  
CHECKED - Adrian T. Halloway  
DRAWN - Venkat Ramana Reddy  
CHECKED - VHV ATH

EXAMINED - *Twig A. Beck*  
ENGINEER OF STRUCTURAL SERVICES  
PASSED - *Sh. Carl Perry*  
ENGINEER OF BRIDGES AND STRUCTURES

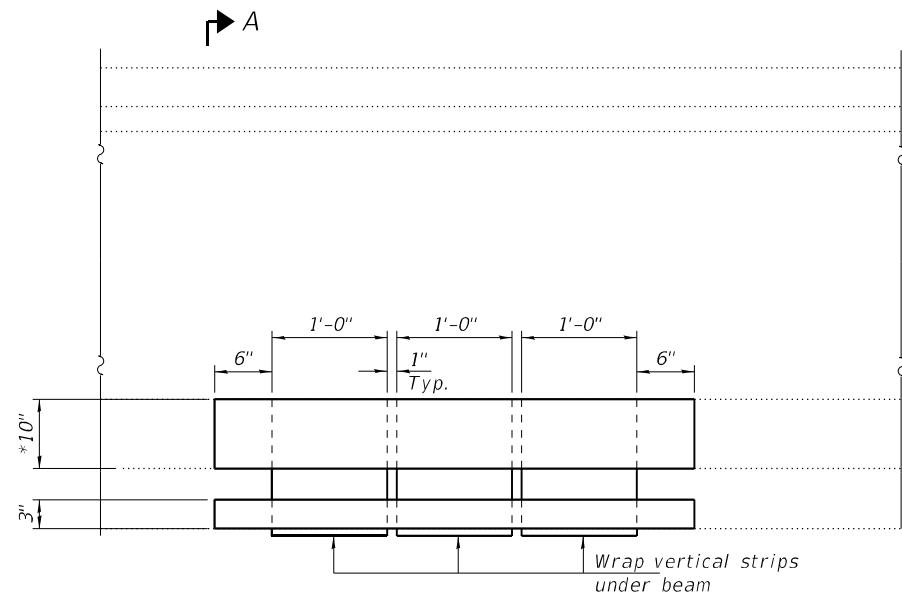
DATE - APRIL 21, 2021  
REVISED -  
REVISED -

**STATE OF ILLINOIS**  
**DEPARTMENT OF TRANSPORTATION**

**FRP REPAIR DETAILS**  
**SN 041-0096**

SHEET NO. 1 OF 2 SHEETS

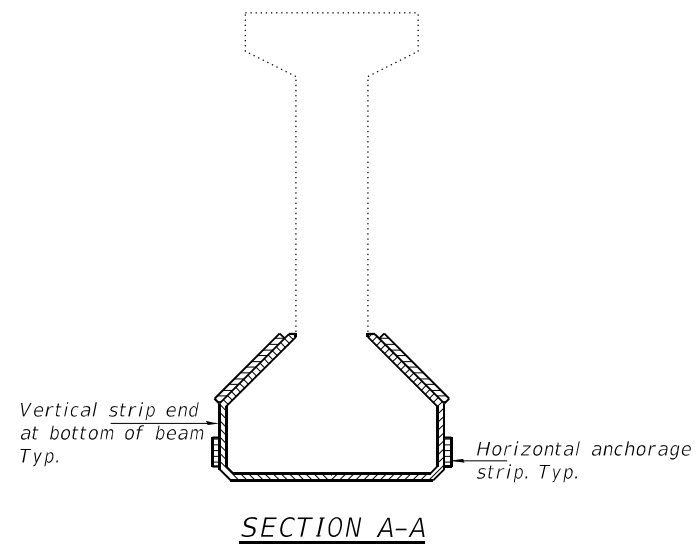
F.A.P. RTE.	SECTION	COUNTY	TOTAL SHEETS	SHEET NO.
726	D9 Bridge Repair 2021-1	JEFFERSON	12	10
ILLINOIS			CONTRACT NO. - 78870	
FED. AID PROJECT				



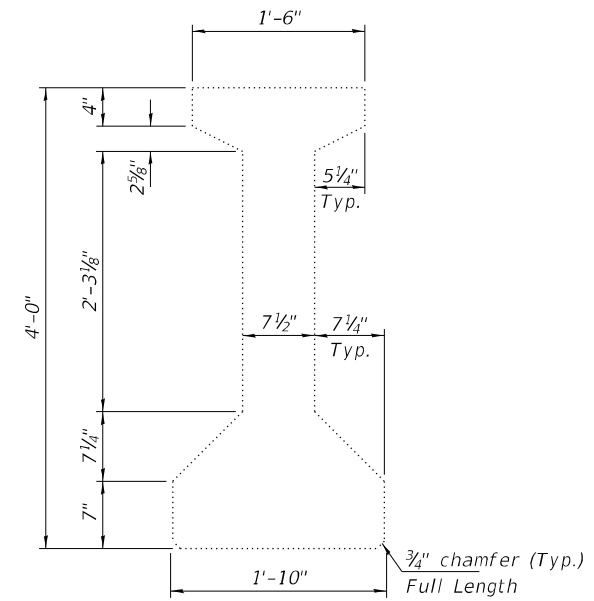
↙ A

**REPAIR TYPE 3**  
(2 Required)

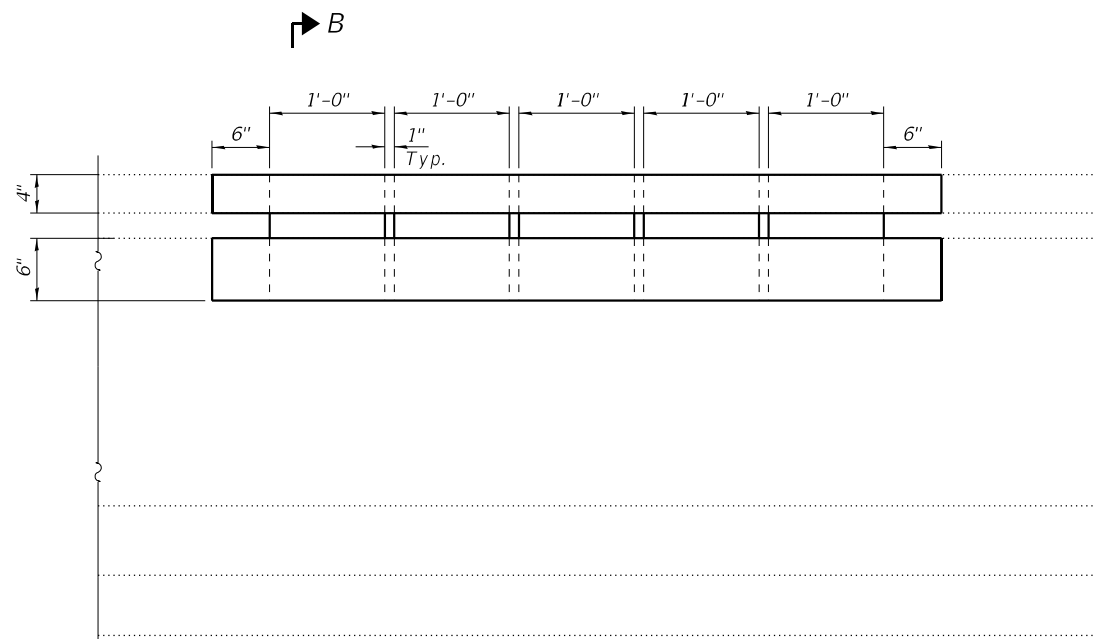
\* Along sloped surface



**SECTION A-A**

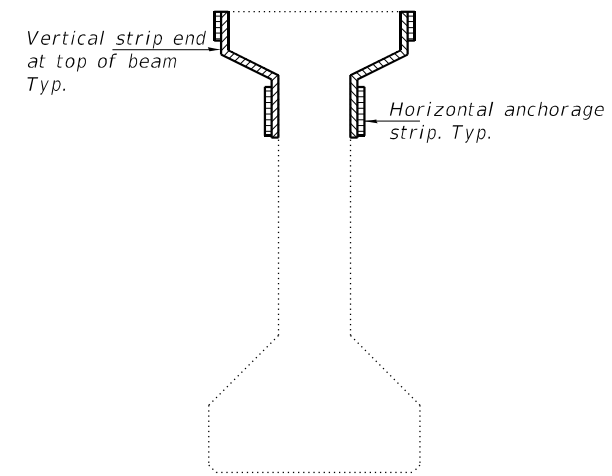


**CROSS SECTION**  
(Showing Dimensions)



↙ B

**REPAIR TYPE 4**  
(1 Required)



**SECTION B-B**

DESIGNED - VHV
CHECKED - ATH
DRAWN - Venkat Ramana Reddy
CHECKED - VHV ATH

EXAMINED	<i>Timothy A. Daulton</i> ENGINEER OF STRUCTURAL SERVICES
PASSED	<i>Carl R. ...</i> ENGINEER OF BRIDGES AND STRUCTURES

DATE -	APRIL 21, 2021
REVISED -	-
REVISED -	-

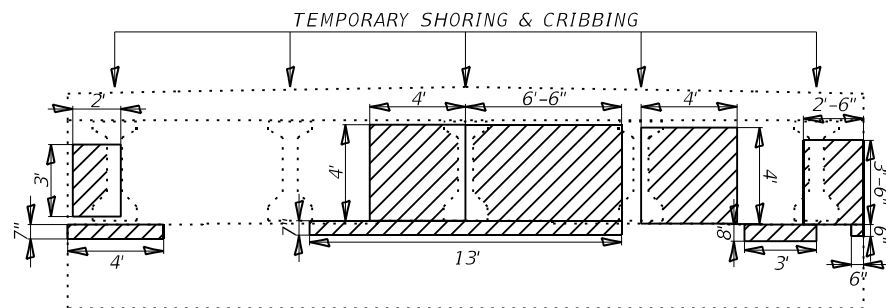
**STATE OF ILLINOIS**  
**DEPARTMENT OF TRANSPORTATION**

**FRP REPAIR DETAILS**  
**SN 041-0096**

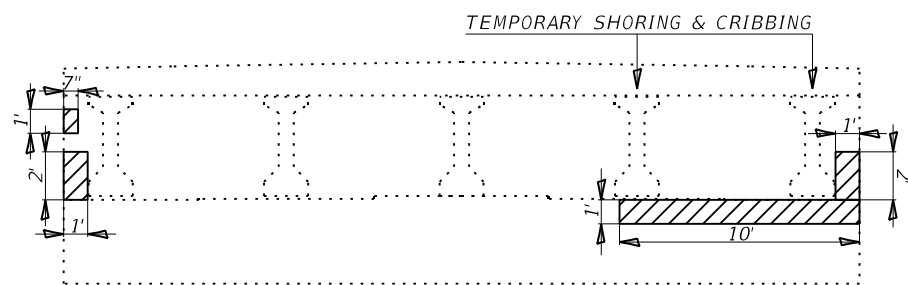
SHEET NO. 2 OF 2 SHEETS

F.A.P. RTE.	SECTION	COUNTY	TOTAL SHEETS	SHEET NO.
726	D9 Bridge Repair 2021-1	JEFFERSON	12	11
CONTRACT NO. - 78870				
ILLINOIS   FED. AID PROJECT				



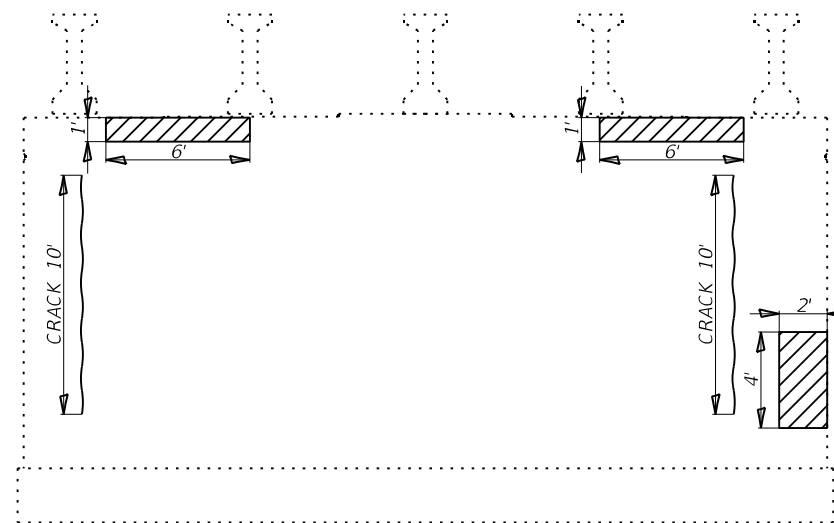


**EAST FACE WEST ABUTMENT  
LOOKING WEST**

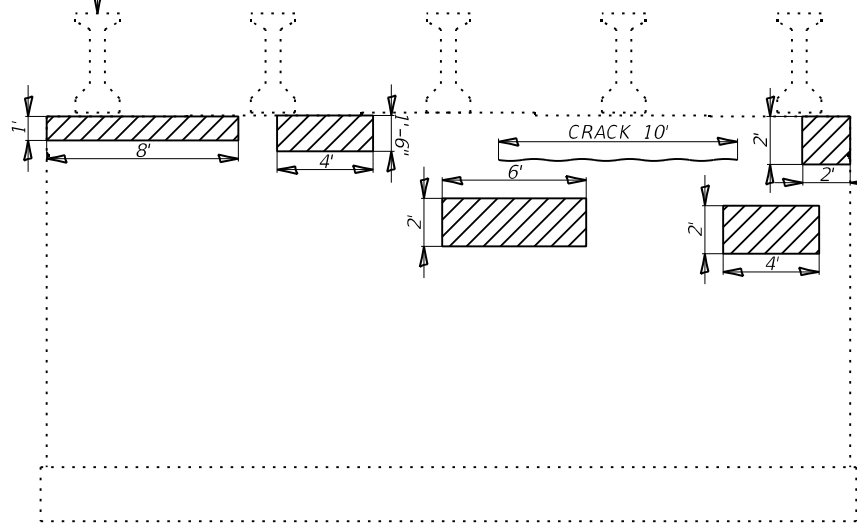


**WEST FACE EAST ABUTMENT  
LOOKING EAST**

TEMPORARY SHORING & CRIBBING



**EAST FACE PIER 4  
LOOKING WEST**



**WEST FACE PIER 4  
LOOKING EAST**

**REACTIONS**

	Abuts.	Pier 4
R DL (kips)	61.3	62.3
R LL (kips)	40.7	40.8
R Imp (kips)	10	10

**BILL OF MATERIAL**

ITEM	UNIT	TOTAL
Structural repair of concrete (Depth ≤ 5 Inches)	Sq. Ft.	253
Epoxy Crack Injection	Foot	30
Temporary Shoring & Cribbing	Each	8



STRUCTURAL REPAIR OF CONCRETE ≤ 5"

\*IL 148 (FAP 726)  
IL 37 (FAS 2887)

\*\* JEFFERSON  
WILLIAMSON

MOEFL Copy of Default  
FILE NAME: p:\projects\28870\CADD\Drawings\DOT\Office\Drawings\28870\CADD\Drawings\DOT\28870-Sheets.dwg

USER NAME = morrisnt	DESIGNED - _____	REVISED - _____
PLOT SCALE = 6.0000' / in.	DRAWN - _____	REVISED - _____
PLOT DATE = 4/21/2021	CHECKED - _____	REVISED - _____
	DATE - _____	REVISED - _____

**STATE OF ILLINOIS  
DEPARTMENT OF TRANSPORTATION**

**SUBSTRUCTURE REPAIRS  
SN 041-0096**

SCALE: \_\_\_\_\_ SHEET \_\_\_\_\_ OF \_\_\_\_\_ SHEETS STA. \_\_\_\_\_ TO STA. \_\_\_\_\_

RTE.	SECTION	COUNTY	TOTAL SHEETS	SHEET NO.
*	D9 BRIDGE REPAIR 2021-1	**	12	12
CONTRACT NO. 78870				
ILLINOIS FED. AID PROJECT				