

STATE OF ILLINOIS
DEPARTMENT OF TRANSPORTATION

FAP ROUTE	SECTION	COUNTY	TOTAL SHEETS	SHEET NO.
**	2021-051-BP	*	19	1
ILLINOIS			CONTRACT NO. 62N90	
**341; 305; 339			*COOK & MCHENRY	

FOR INDEX OF SHEETS, SEE SHEET NO. 2

IMPROVEMENTS ARE LOCATED IN THE VILLAGES OF HOFFMAN ESTATES, FOX RIVER GROVE AND ALGONQUIN

PROPOSED HIGHWAY PLANS

FAP ROUTE: VARIOUS
SECTION 2021-051-BP
BRIDGE PAINTING
COOK AND MCHENRY COUNTY

C-91-167-21

FOR LOCATION MAPS SEE SHEET NO 4

TRAFFIC DATA

IL 72: HIGGINS RD

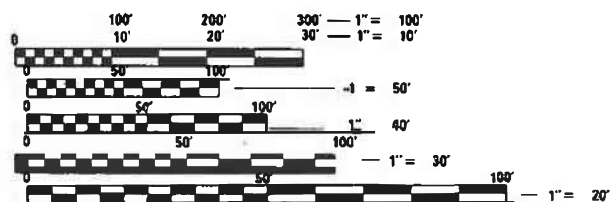
2019 ADT = 23000
POSTED SPEED LIMIT = 55 MPH

US 14: NORTHWEST HWY

2019 ADT = 27600
POSTED SPEED LIMIT = 35 MPH

IL 62: ALGONQUIN RD

2019 ADT = 38100
POSTED SPEED LIMIT = 30-40 MPH

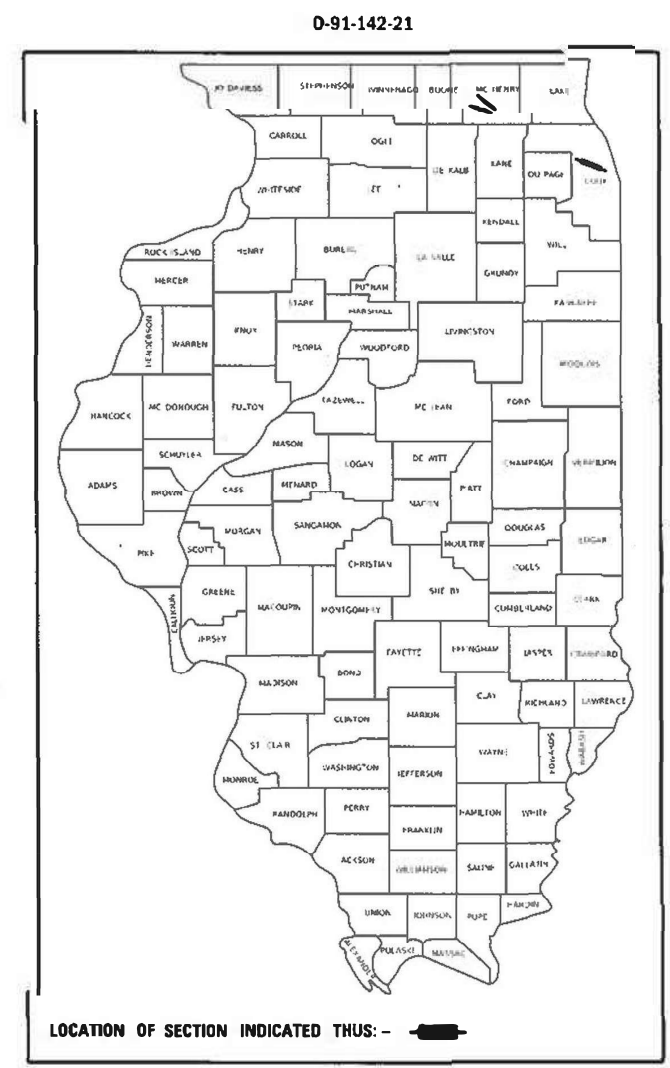


FULL SIZE PLANS HAVE BEEN PREPARED USING STANDARD ENGINEERING SCALES. REDUCED SIZED PLANS WILL NOT CONFORM TO STANDARD SCALES. IN MAKING MEASUREMENTS ON REDUCED PLANS, THE ABOVE SCALES MAY BE USED.

J.U.L.I.E.
JOINT UTILITY LOCATION INFORMATION FOR EXCAVATORS
1-800-892-0123
OR 811

PROJECT MANAGER: J. ALAIN MIDY (847) 221-3056

CONTRACT NO. 62N90



STATE OF ILLINOIS
DEPARTMENT OF TRANSPORTATION

SUBMITTED March 16 20 21
Jose Rios REGIONAL ENGINEER

May 7, 2021 [Signature]
ENGINEER OF DESIGN AND ENVIRONMENT

May 7, 2021 [Signature]
DIRECTOR OF HIGHWAYS PROJECT IMPLEMENTATION

PRINTED BY THE AUTHORITY OF THE STATE OF ILLINOIS

INDEX OF SHEETS

SHEET NO.	DESCRIPTION
1.	COVER SHEET
2.	INDEX OF SHEETS, STATE STANDARDS, AND GENERAL NOTES
3.	SUMMARY OF QUANTITIES
4.	LOCATION MAPS
5-7.	BRIDGE DETAILS SN 016-0502
8-11.	BRIDGE DETAILS SN 056-0058
12-15.	BRIDGE DETAILS SN 056-0059
16.	DELETED
17.	TRAFFIC CONTROL AND PROTECTION FOR SIDE ROADS, INTERSECTIONS AND DRIVEWAYS (TC-10)
18.	TRAFFIC CONTROL AND PROTECTION AT TURN BAYS (TO REMAIN OPEN TO TRAFFIC)(TC-14)
19.	ARTERIAL ROAD INFORMATION SIGN (TC-22)

STATE STANDARDS

STD. NO.	DESCRIPTION
701101-05	OFF-RD OPERATIONS, MULTILANE, 15' TO 24" FROM PAVEMENT EDGE
701106-02	OFF-RD OPERATIONS, MULTILANE, MORE THAN 15' AWAY
701601-09	URBAN LANE CLOSURE, MULTILANE, 1W OR 2W WITH NON TRAVERSABLE MEDIAN
701606-10	URBAN LANE CLOSURE, MULTILANE, 2W WITH MOUNTABLE MEDIAN
701701-10	URBAN LANE CLOSURE, MULTILANE, INTERSECTION
701801-06	SIDEWALK, CORNER OR CROSSWALK CLOSURE
701901-08	TRAFFIC CONTROL DEVICES

GENERAL NOTES

BEFORE STARTING ANY EXCAVATION, THE CONTRACTOR SHALL CALL "J.U.L.I.E." AT (800) 892-0123 OR 811 FOR FIELD LOCATIONS OF BURIED ELECTRIC, TELEPHONE AND GAS UTILITIES. (48 HOUR NOTIFICATION IS REQUIRED)

THE CONTRACTOR SHALL COORDINATE CONSTRUCTION ACTIVITIES WITH UTILITY COMPANIES, AND THE VILLAGES OF HOFFMAN ESTATES, FOX RIVER GROVE AND ALGUNQUIN.

THE CONTRACTOR WILL NOT BE ALLOWED TO SET UP A YARD OR FIELD OFFICE ON STATE PROPERTY WITHOUT WRITTEN PERMISSION FROM THE DEPARTMENT.

THE CONTRACTOR SHALL CONTACT THE DISTRICT ONE TRAFFIC CONTROL SUPERVISOR FOR ARTERIALS AT : Kalpana.Kannan-Hosadurg@illinois.gov A MINIMUM OF 72 HOURS IN ADVANCE OF BEGINING WORK.

PLAN DIMENSIONS AND DETAILS RELATIVE TO EXISTING PLANS ARE SUBJECT TO NOMINAL CONSTRUCTION VARIATIONS. THE CONTRACTOR SHALL FIELD VERIFY EXISTING DIMENSIONS AND DETAILS AFFECTING NEW CONSTRUCTION AND MAKE NECESSARY APPROVED ADJUSTMENTS PRIOR TO CONSTRUCTION OR ORDERING OF MATERIALS. SUCH VARIATIONS SHALL NOT BE CAUSE FOR ADDITIONAL COMPENSATION FOR A CHANGE IN SCOPE OF THE WORK. HOWEVER, THE CONTRACTOR WILL BE PAID FOR THE QUANTITY ACTUALLY FURNISHED BASED AT THE UNIT PRICE BID FOR THE WORK.

THE CONTRACTOR SHALL BE REQUIRED TO PROVIDE ACCESS TO ABUTTING PROPERTY AT ALL TIMES DURING THE CONSTRUCTION OF THIS PROJECT.

DO NOT SCALE PLANS FOR CONSTRUCTION DIMENSIONS.

IT SHALL BE THE CONTRACTOR'S RESPONSIBILITY TO PROTECT AND PRESERVE THE EXISTING BRIDGE LIGHTING AT ANY LOCATIONS THAT LIGHTING IS ENCOUNTERED ADJACENT TO AN AREA TO BE CLEANED AND PAINTED.

THESE PLANS HAVE BEEN PREPARED FROM NOTES RECEIVED FROM THE BUREAU OF MAINTENANCE.

GENERAL PAINT NOTES

CLEANING AND PAINTING OF THE EXISTING STRUCTURAL STEEL SHALL BE AS SPECIFIED IN THE SPECIAL PROVISION FOR "CLEANING AND PAINTING EXISTING STEEL STRUCTURES".

SN 016-0502

ALL BEAMS, BEARINGS AND OTHER STRUCTURAL STEEL SHALL BE CLEANED PER NEAR WHITE BLAST CLEANING - SSPC-SP10. THESE AREAS SHALL BE PAINTED ACCORDING TO THE REQUIREMENTS OF PAINT SYSTEM 1 -OZ/E/U. THE COLOR OF THE FINAL FINISH COAT FOR ALL INTERIOR STEEL SURFACES SHALL BE GRAY, MUNSELL NO 5B 7/1. THE COLOR OF THE FINAL FINISH COAT FOR THE EXTERIOR AND BOTTOM FLANGE OF THE FASCIA BEAMS SHALL BE REDDISH BROWN, MUNSELL NO 2.5YR 3/4.

SN 056-0058

ALL BEAMS, BEARINGS AND OTHER STRUCTURAL STEEL WITHIN FIVE (5) FT (MEASURED ALONG THE BEAM) OF EITHER SIDE OF ALL DECK JOINTS (2 JOINTS), SHALL BE CLEANED PER NEAR WHITE BLAST CLEANING SSPC-SP10. THE EXTERIOR SURFACES AND TOP AND BOTTOM OF THE BOTTOM FLANGE OF THE FASCIA BEAMS OUTSIDE THE DECK JOINTS FOR THE LENGTH OF THE BRIDGE (SEE FIGURE 1) SHALL BE CLEANED PER NEAR WHITE BLAST CLEANING SSPC-SP10. THESE AREAS SHALL BE PAINTED ACCORDING TO THE REQUIREMENTS OF PAINT SYSTEM 1 -OZ/E/U. THE COLOR OF THE FINAL FINISH COAT FOR ALL INTERIOR STEEL SURFACES SHALL BE GRAY, MUNSELL NO 5B 7/1. THE COLOR OF THE FINAL FINISH COAT FOR THE EXTERIOR AND BOTTOM FLANGE OF THE FASCIA BEAMS SHALL BE REDDISH BROWN, MUNSELL NO 2. 5YR 3/4.

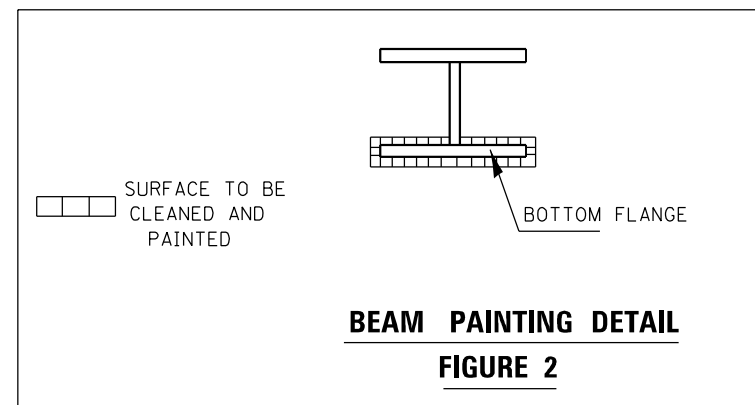
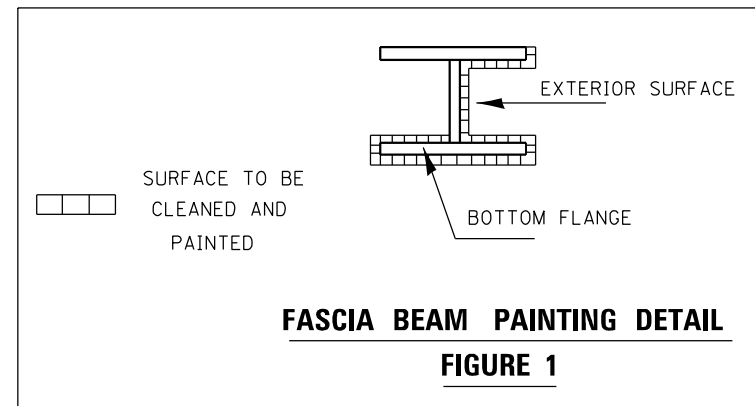
SN 056-0059

ALL BEAMS, BEARINGS AND OTHER STRUCTURAL STEEL WITHIN TEN (10) FT (MEASURED ALONG THE BEAM) OF EITHER SIDE OF ALL DECK JOINTS (2 JOINTS), SHALL BE CLEANED PER NEAR WHITE BLAST CLEANING SSPC-SP10. THE EXTERIOR SURFACES AND TOP AND BOTTOM OF THE BOTTOM FLANGE OF THE FASCIA BEAMS OUTSIDE THE DECK JOINTS FOR THE LENGTH OF THE BRIDGE (SEE FIGURE 1) AND FULL LENGTH OF TOP AND BOTTOM OF BOTTOM FLANGES OF ALL INTERIOR BEAMS IN SPAN 3 (SEE FIGURE 2) SHALL BE CLEANED PER NEAR WHITE BLAST CLEANING SSPC-SP10. THESE AREAS SHALL BE PAINTED ACCORDING TO THE REQUIREMENTS OF PAINT SYSTEM 1 -OZ/E/U. THE COLOR OF THE FINAL FINISH COAT FOR ALL INTERIOR STEEL SURFACES SHALL BE GRAY, MUNSELL NO 5B 7/1. THE COLOR OF THE FINAL FINISH COAT FOR THE EXTERIOR AND BOTTOM FLANGE OF THE FASCIA BEAMS SHALL BE REDDISH BROWN, MUNSELL NO 2. 5YR 3/4.

ALL ITEMS (SUCH AS, BUT NOT LIMITED TO: CONDUITS, BRACKETS AND DECK DRAINS) ATTACHED TO OUTSIDE OF THE FASCIA BEAMS SHOULD BE CLEANED AND PAINTED.

A MINIMUM OF TWO (2) AIR MONITORS WILL BE REQUIRED FOR SN 056-0059 AND ONE (1) FOR SN 056-0059 TO MONITOR ABRASIVE BLASTING OPERATIONS. SEE SPECIAL PROVISIONS FOR "CONTAINMENT AND DISPOSAL OF LEAD PAINT CLEANING RESIDUES."

ALL ITEMS (SUCH AS, BUT NOT LIMITED TO: CONDUITS, BRACKETS AND DECK DRAINS) ATTACHED TO OUTSIDE OF THE FASCIA BEAMS SHOULD BE CLEANED AND PAINTED.



** 341; 305; 339

*COOK & MCHENRY

MODEL: Default
FILE NAME: p:\data\mcrroom.dwg
PROJECT: I:\Projects\14221\CADDData\Design\014221-2h\tbls.dgn

USER NAME = gorengautab	DESIGNED -	REVISED -
	DRAWN -	REVISED -
PLOT SCALE = 100,0000' / in.	CHECKED -	REVISED -
PLOT DATE = 4/8/2021	DATE -	REVISED -

**STATE OF ILLINOIS
DEPARTMENT OF TRANSPORTATION**

INDEX OF SHEETS, STATE STANDARDS AND GENERAL NOTES			
SCALE:	SHEET	OF SHEETS	STA. TO STA.

F.A.P. RTE.	SECTION	COUNTY	TOTAL SHEETS	SHEET NO.
**	2021-051-BP	*	19	2
CONTRACT NO. 62N90				
ILLINOIS FED. AID PROJECT				

URBAN

SUMMARY OF QUANTITIES			TOTAL QUANTITIES URBAN	CONSTRUCTION TYPE CODE 0047						
CODE NO	ITEM	UNIT		1) SN 016-0502 100% STATE	2) SN 056-0058 100% STATE	3) SN 056-0059 100% STATE				
67000400	ENGINEER'S FIELD OFFICE, TYPE A	CAL MO	18	6	6	6				
67100100	MOBILIZATION	L SUM	1	0.4	0.3	0.3				
70102625	TRAFFIC CONTROL AND PROTECTION, STANDARD 701606	L SUM	1		0.5	0.5				
70102630	TRAFFIC CONTROL AND PROTECTION, STANDARD 701601	L SUM	1	1						
70102635	TRAFFIC CONTROL AND PROTECTION, STANDARD 701701	L SUM	1			1				
70102640	TRAFFIC CONTROL AND PROTECTION, STANDARD 701801	L SUM	1		0.5	0.5				
X5060601	CONTAINMENT AND DISPOSAL OF NON-LEAD PAINT CLEANING RESIDUES NO. 1	L SUM	1		1					
X5060602	CONTAINMENT AND DISPOSAL OF NON-LEAD PAINT CLEANING RESIDUES NO. 2	L SUM	1			1				
Z0007101	CONTAINMENT AND DISPOSAL OF LEAD PAINT CLEANING RESIDUES NO.1	L SUM	1	1						
Z0010501	CLEANING AND PAINTING STEEL BRIDGE NO. 1	L SUM	1	1						
Z0010502	CLEANING AND PAINTING STEEL BRIDGE NO. 2	L SUM	1		1					
Z0010503	CLEANING AND PAINTING STEEL BRIDGE NO. 3	L SUM	1			1				

SUMMARY OF QUANTITIES			TOTAL QUANTITIES URBAN	CONSTRUCTION TYPE CODE 0047						
CODE NO	ITEM	UNIT		1) SN 016-0502 100% STATE	2) SN 056-0058 100% STATE	3) SN 056-0059 100% STATE				
Z0030850	TEMPORARY INFORMATION SIGNING	SQ FT	154.2	51.4	51.4	51.4				
Z0048665	RAILROAD PROTECTIVE LIABILITY INSURANCE	L SUM	1	1						

FILE NAME =	USER NAME = gorengrat	DESIGNED -	REVISED -
pw\planroom\dd\illinois\p\DOT Documents\DOT	0\files\District\Projects\172 over RRCAD\Draw\Design\172-319\11\11	-	REVISED -
	PLOT SCALE = 100,0000' / in.	CHECKED -	REVISED -
	PLOT DATE = 3/15/2021	DATE -	REVISED -

STATE OF ILLINOIS
DEPARTMENT OF TRANSPORTATION

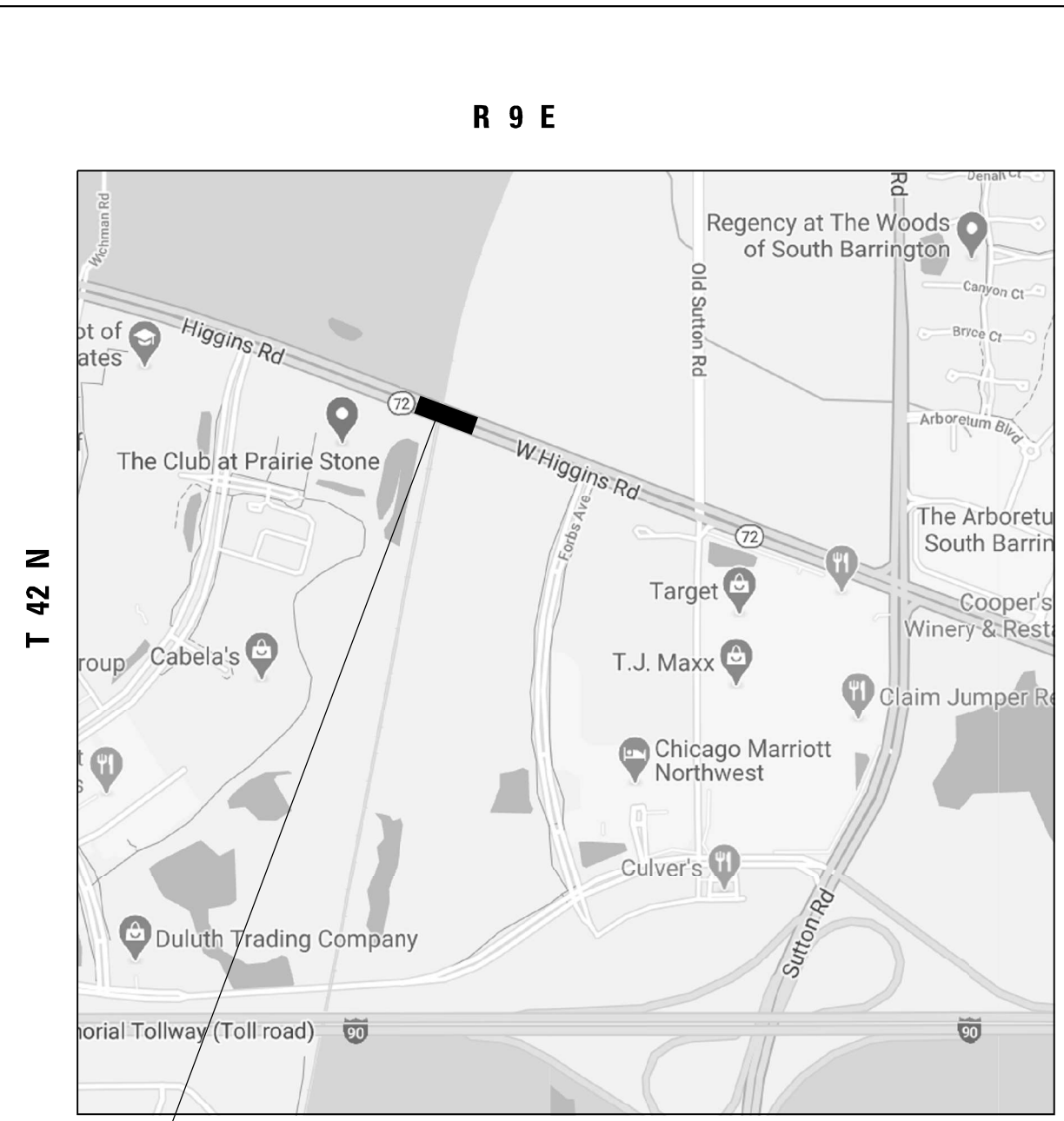
SUMMARY OF QUANTITIES			
SCALE:	SHEET NO.	OF SHEETS	STA. TO STA.

F.A.P. RTE.	SECTION	COUNTY	TOTAL SHEETS	SHEET NO.
**	2021-051-BP	*	19	3
FED. ROAD DIST. NO. 1 ILLINOIS FED. AID PROJECT			CONTRACT NO. 62N90	

REV-SEP

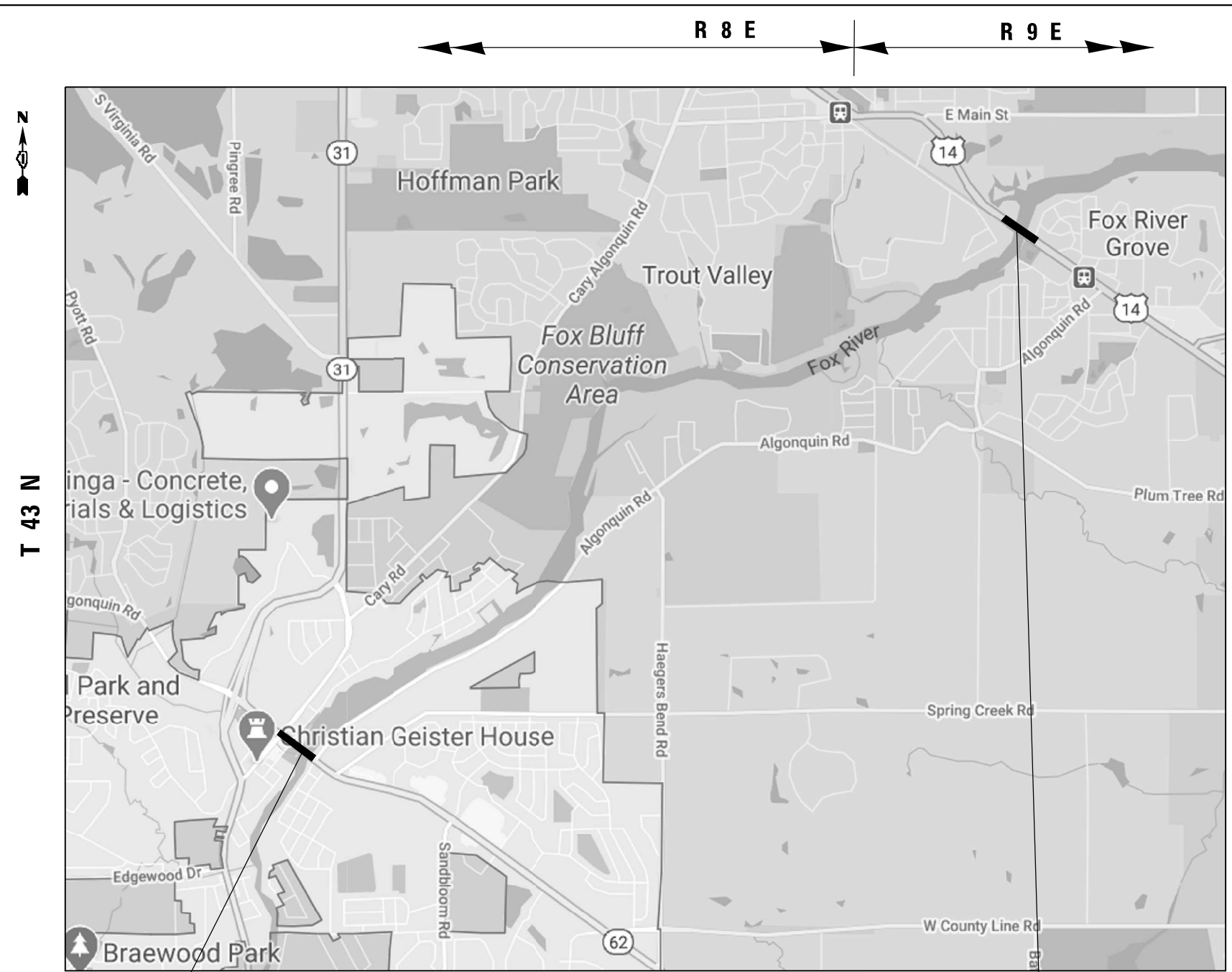
**341; 305; 339 *COOK & MCHENRY

MODEL: Default
 FILE NAME: p:\barroom.dwg
 PROJECT: I:\Projects\14221\CADDData\Design\14221-sub-bas.dwg
 PROJECT DATE: 3/19/2021



BARRINGTON TOWNSHIP

1) SN 016-0502
 IL 72 WB: (HIGGINS RD)
 OVER RR



ALGONQUIN TOWNSHIP

3) SN 056-0059
 IL 62 (ALGONQUIN RD)
 OVER FOX RIVER

2) SN 056-0058
 US 14 (NORTHWEST HWY)
 OVER FOX RIVER

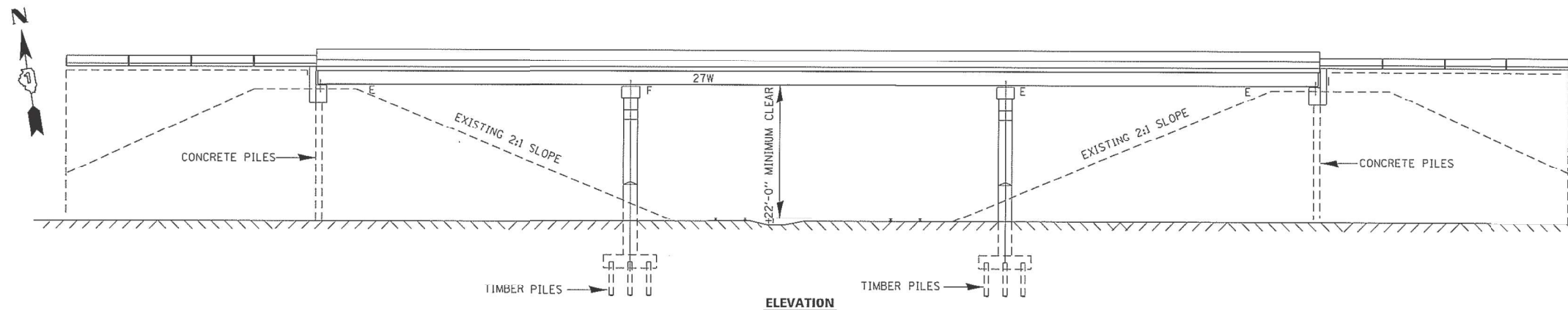
** 341; 305; 339 * COOK & MCHENRY

USER NAME = mldyja	DESIGNED -	REVISED -
PLOT SCALE = 100,0000' / in.	DRAWN -	REVISED -
PLOT DATE = 3/19/2021	CHECKED -	REVISED -
	DATE -	REVISED -

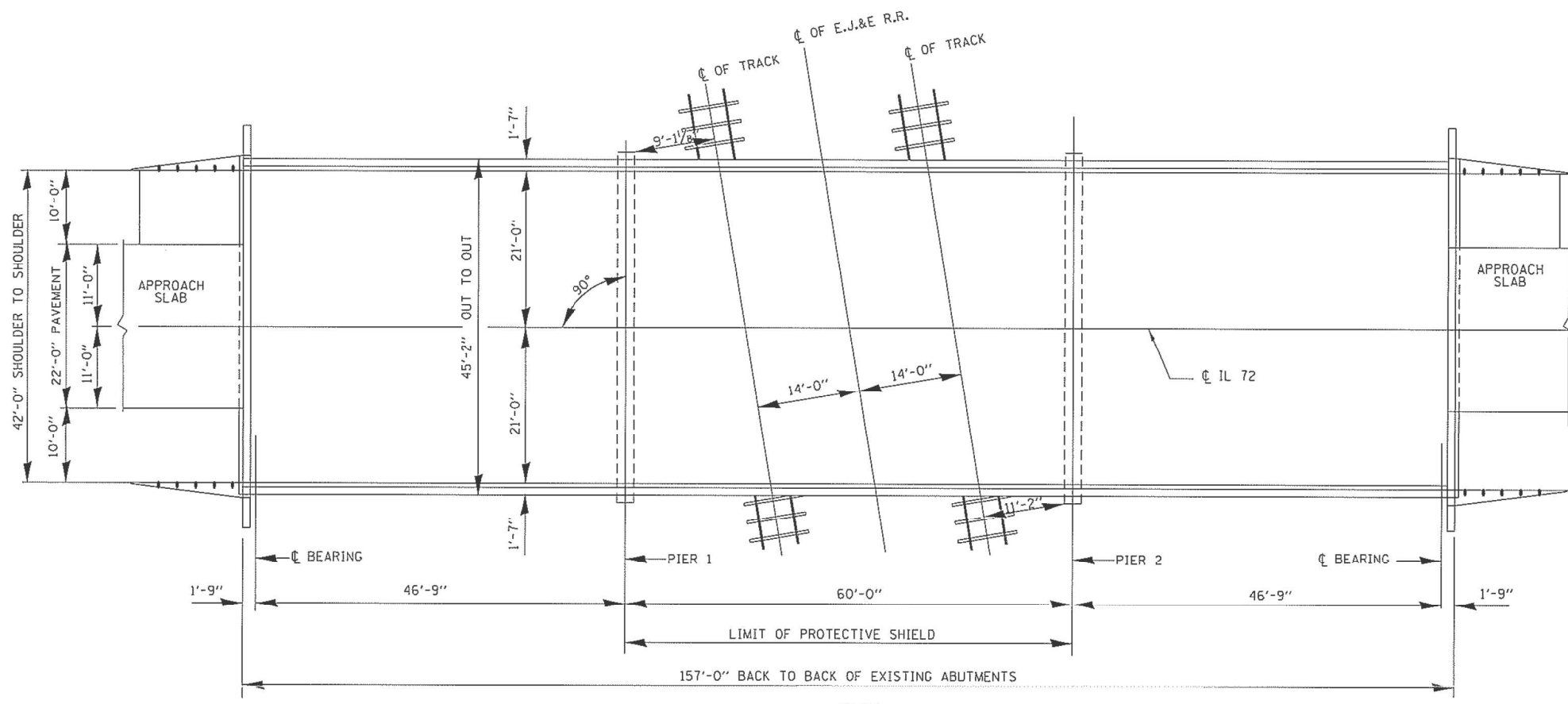
**STATE OF ILLINOIS
 DEPARTMENT OF TRANSPORTATION**

LOCATION MAPS				
SCALE:	SHEET	OF	SHEETS	STA. TO STA.

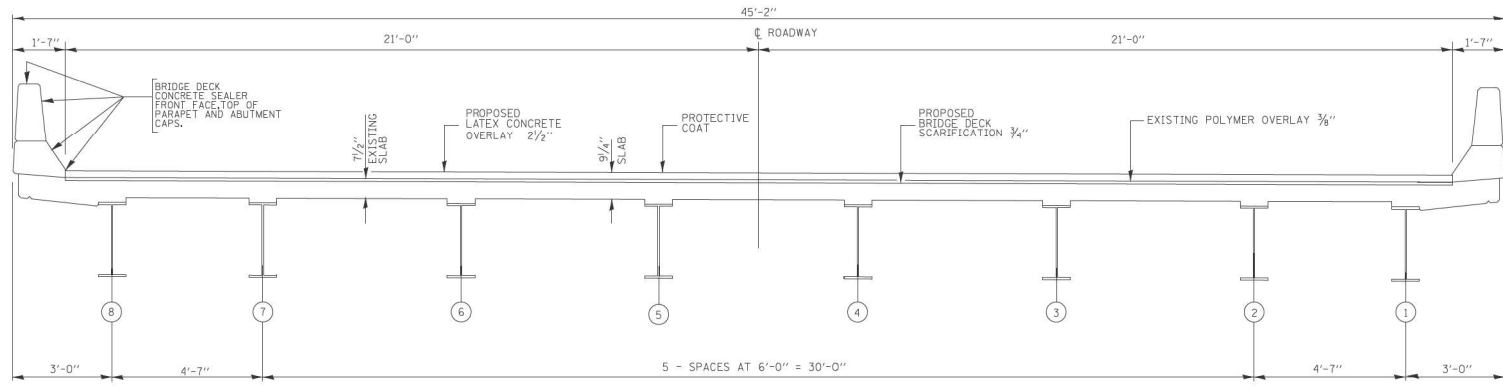
F.A.P. RTE. **	SECTION 2021-051-BP	COUNTY *	TOTAL SHEETS 19	SHEET NO. 4
ILLINOIS FED. AID PROJECT			CONTRACT NO. 62N90	



ELEVATION



PLAN



CROSS SECTION
(LOOKING WEST)

FOR INFORMATION ONLY

MODEL: Default
 FILE NAME: p:\data\m3000\dot\illinois\gov\pww\DOT\Documents\DOT_Offices\Dist\refc_1\Project\14221\CADD\Data\Design\0114221-shr\slab.dgn

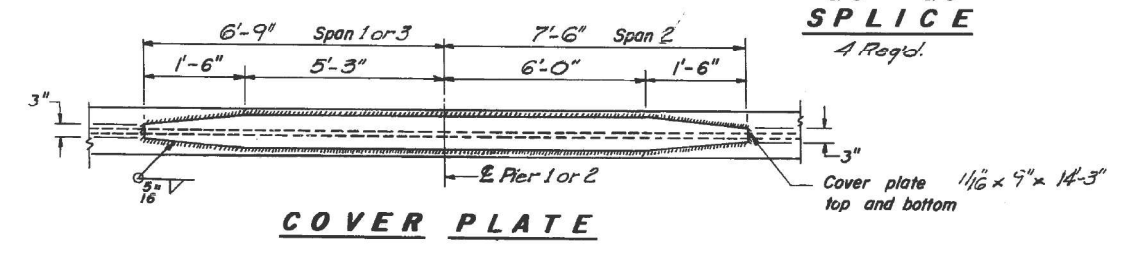
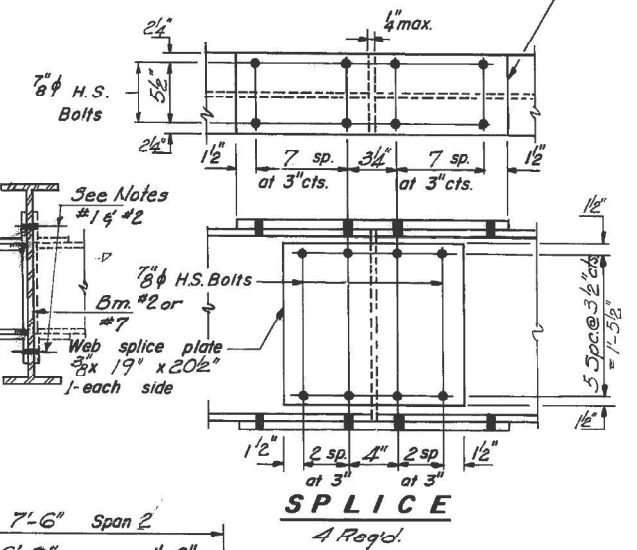
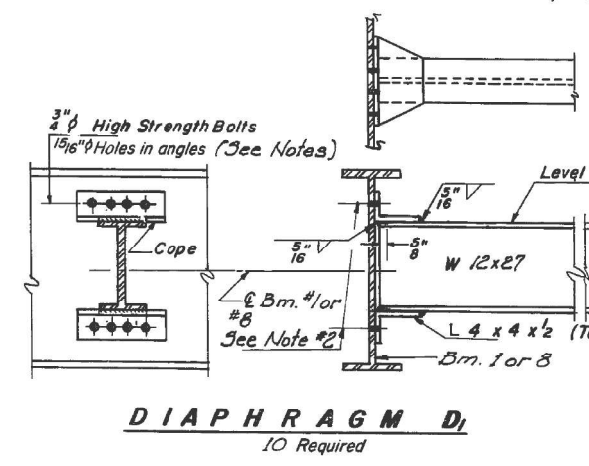
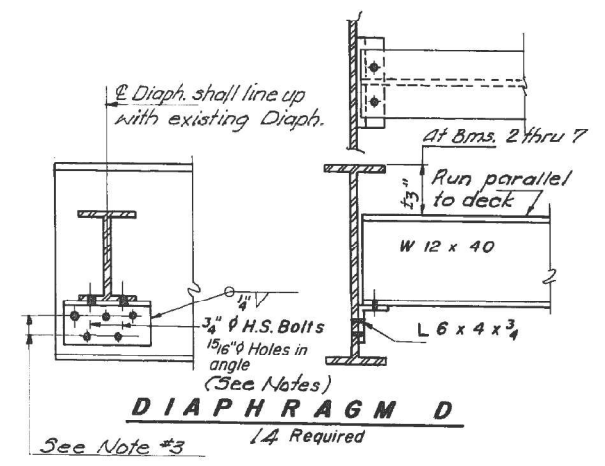
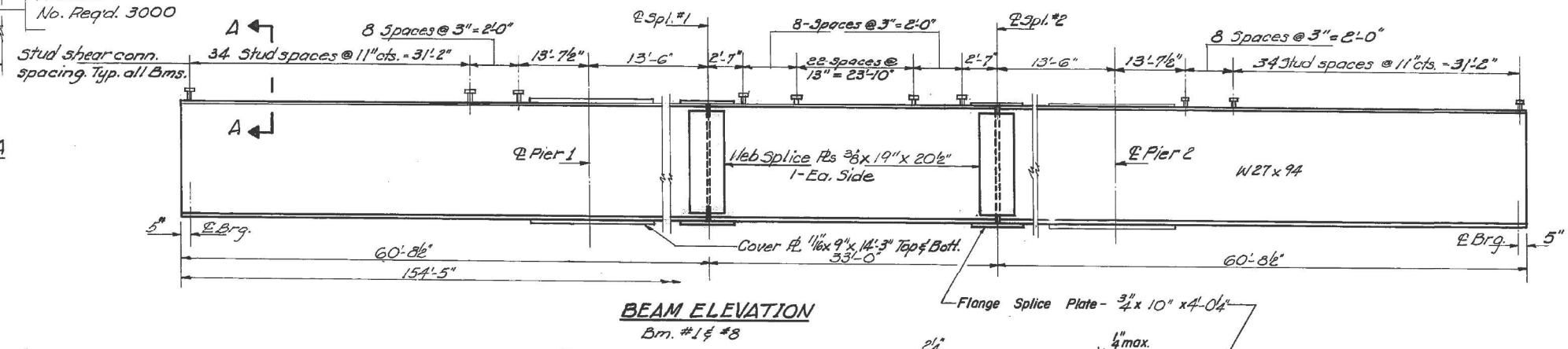
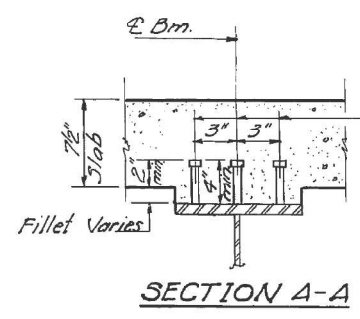
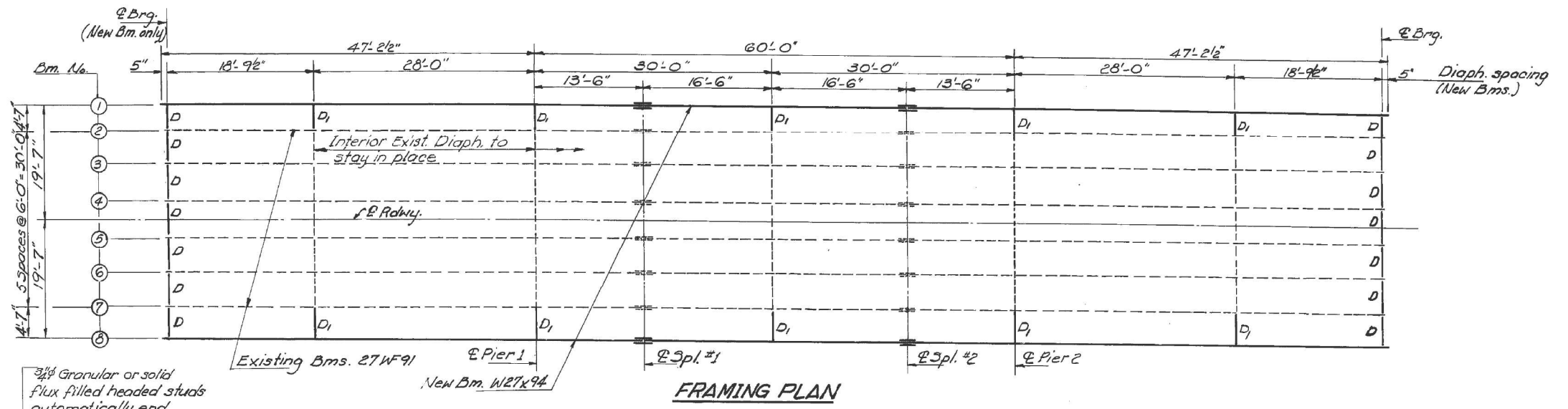
USER NAME = gorengautab	DESIGNED -	REVISED -
PLOT SCALE = 100,0000' / in.	DRAWN -	REVISED -
PLOT DATE = 4/1/2021	CHECKED -	REVISED -
	DATE -	REVISED -

STATE OF ILLINOIS
DEPARTMENT OF TRANSPORTATION

EXISTING PLAN AND CROSS SECTIONN. SN 016-0502
IL 72 WB OVER RR

SCALE: SHEET 1 OF 3 SHEETS STA. TO STA.

F.A.P. RTE.	SECTION	COUNTY	TOTAL SHEETS	SHEET NO.
341	2021-051-BP	COOK	19	5
CONTRACT NO. 62N90				
ILLINOIS FED. AID PROJECT				



FOR INFORMATION ONLY

MODEL: Default
 FILE NAME: p:\work\baronroom.dwg
 PROJECT: ILL 72 OVER RR\CADD\Drawings\DOT Office\Drawings\172-27-01-01.dwg
 USER: gorenautab

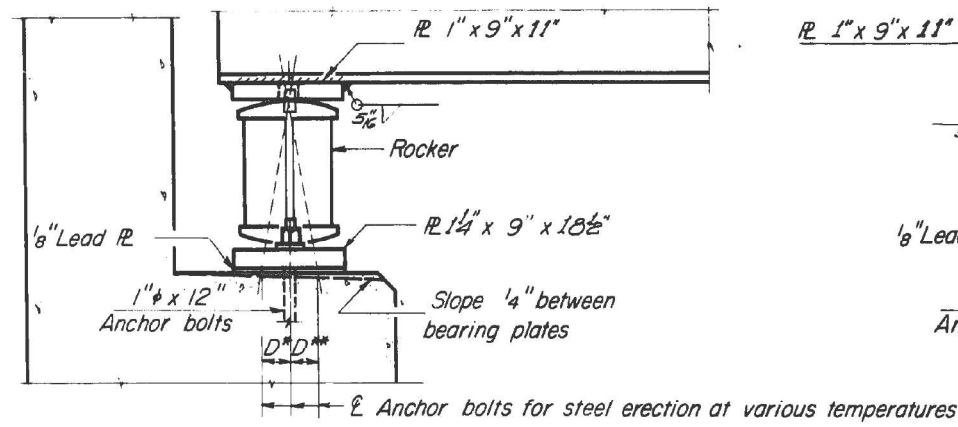
USER NAME = gorenautab	DESIGNED -	REVISED -
DRAWN -	REVISED -	
PLOT SCALE = 100,0000' / in.	CHECKED -	REVISED -
PLOT DATE = 3/15/2021	DATE -	REVISED -

STATE OF ILLINOIS
DEPARTMENT OF TRANSPORTATION

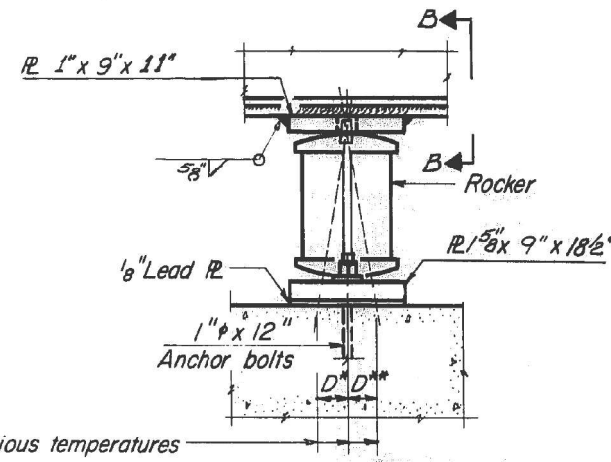
FRAMING PLAN. SN 016-0502
IL 72 WB OVER RR

SCALE: SHEET 2 OF 3 SHEETS STA. TO STA.

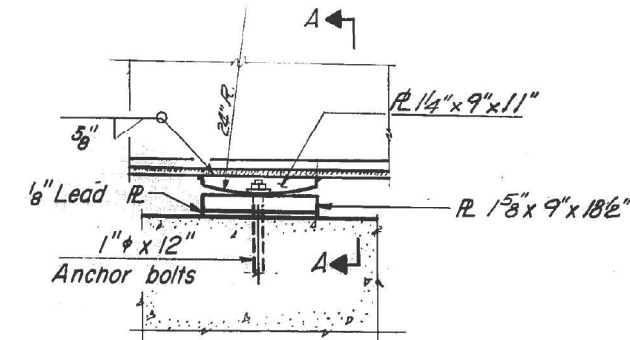
F.A.P. RTE.	SECTION	COUNTY	TOTAL SHEETS	SHEET NO.
341	2021-051-BP	COOK	19	6
CONTRACT NO. 62N90				
ILLINOIS FED. AID PROJECT				



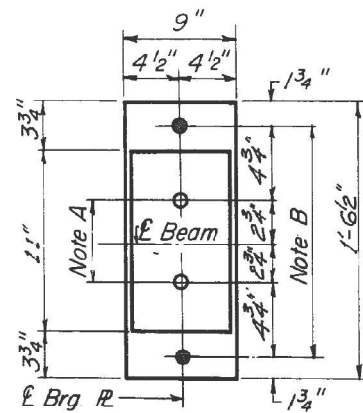
SECTION AT ABUTS



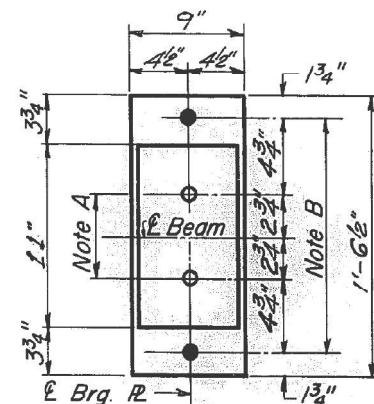
ELEVATION AT PIER 2



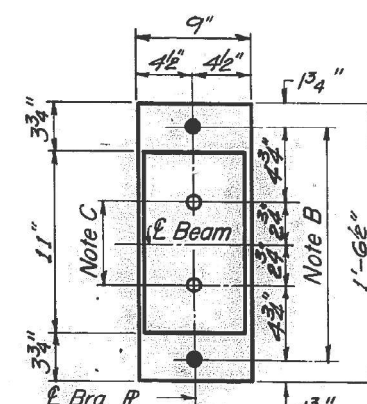
ELEVATION AT PIER 1



PLAN AT ABUTMENT



PLAN AT PIER 2

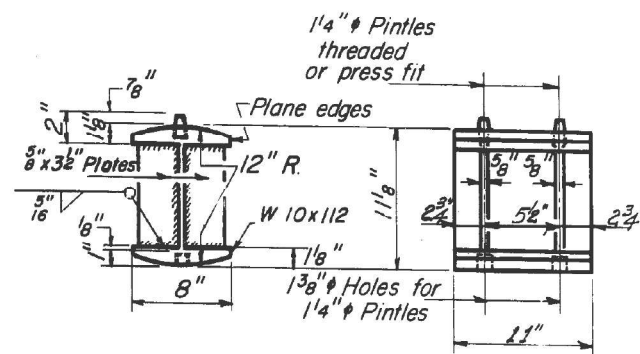


PLAN AT PIER 1

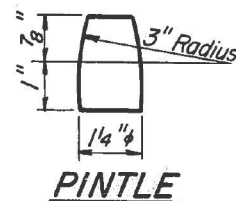
NOTE A
 1 3/8" Holes - 1" deep in top R.
 for pintles. Thread or press fit
 pintles into bottom R.

NOTE B
 1 1/2" Holes for 1" anchor bolts.
 16 x 2 1/2" x 2 1/2" R. Washers
 under nut.

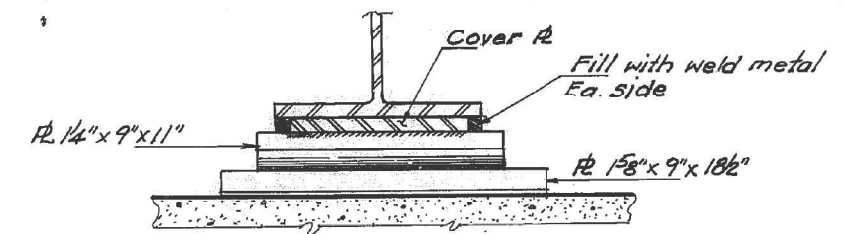
BEARING ASSEMBLY DETAILS



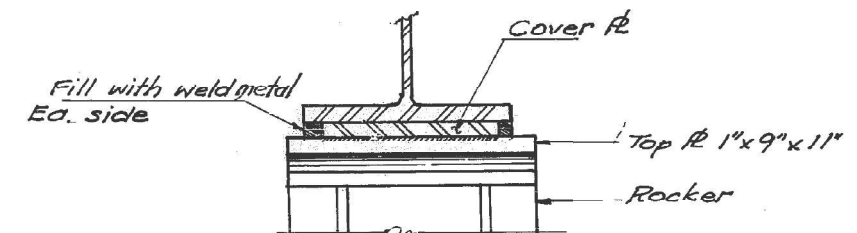
ROCKER



PINTLE



SECTION A-A



SECTION B-B

FOR INFORMATION ONLY

MODEL: Default
 FILE NAME: p:\pub\amr\m\dot\illinois\gov\pww\dot\Documents\DOT Office\Drawings\1\Project\1172 over RR\CAD\Drawings\1172-rb-01b.dgn

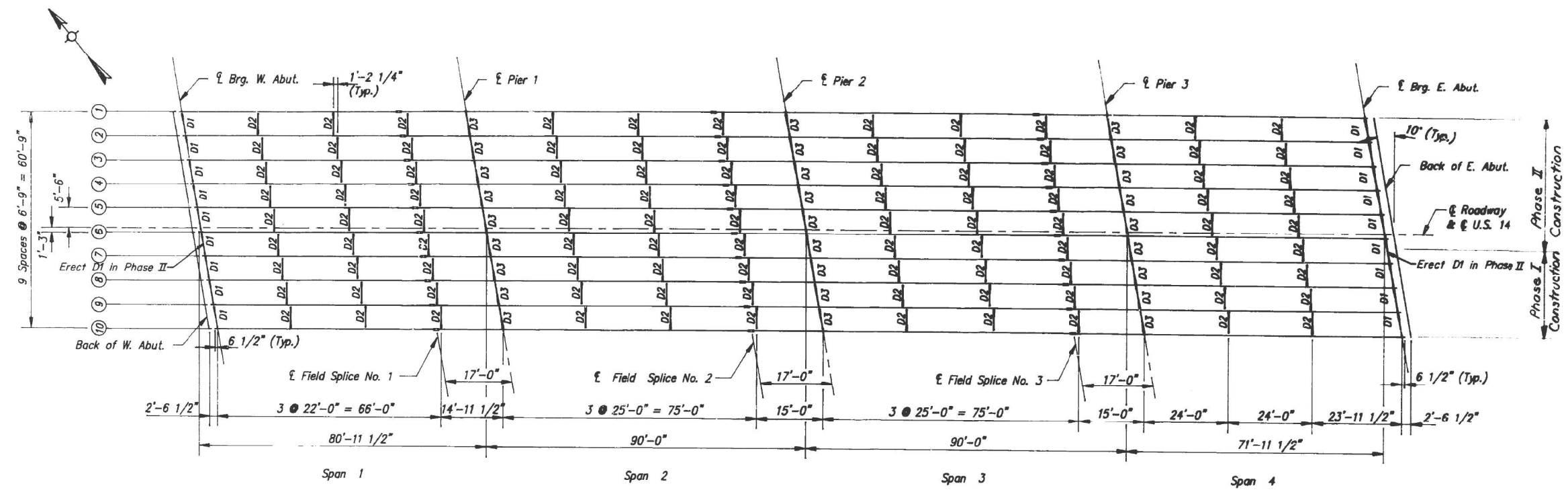
USER NAME = gorengautab	DESIGNED -	REVISED -
	DRAWN -	REVISED -
PLOT SCALE = 100,0000' / in.	CHECKED -	REVISED -
PLOT DATE = 3/15/2021	DATE -	REVISED -

**STATE OF ILLINOIS
 DEPARTMENT OF TRANSPORTATION**

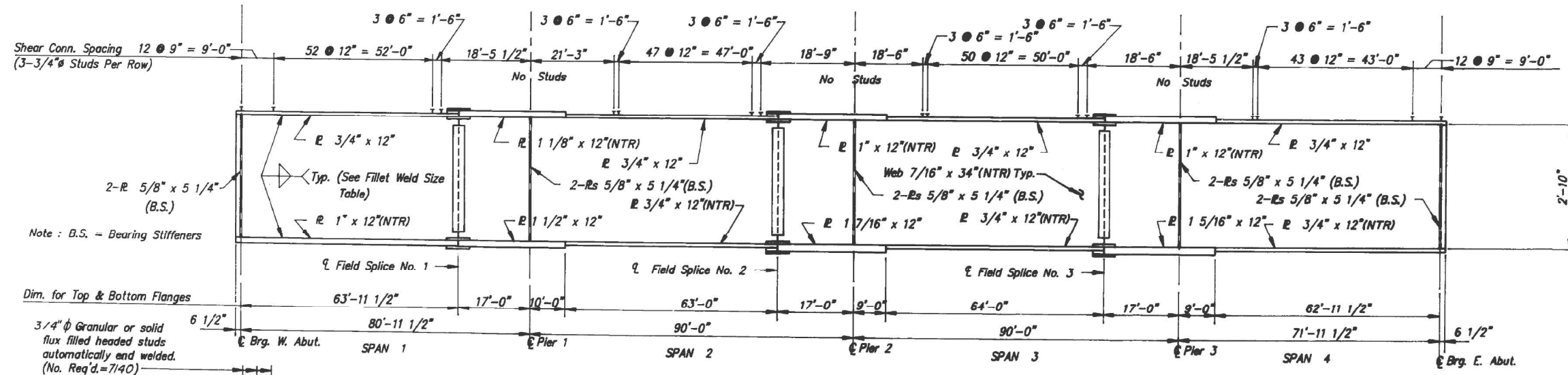
**BEARING DETAILS. SN 016-0502
 IL 72 WB OVER RR**

SCALE: SHEET 3 OF 3 SHEETS STA. TO STA.

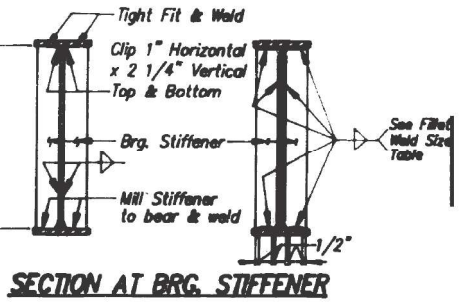
F.A.P. RTE.	SECTION	COUNTY	TOTAL SHEETS	SHEET NO.
341	2021-051-BP	COOK	19	7
CONTRACT NO. 62N90				
ILLINOIS FED. AID PROJECT				



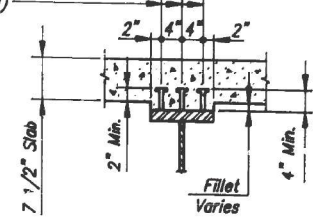
FRAMING PLAN



GIRDER ELEVATION



SECTION AT BRG. STIFFENER



SHEAR STUDS

FOR INFORMATION ONLY

MODEL: Default
 FILE NAME: p:\pub\baronon.dwg
 PROJECT: 72 over BRG. CA. Data\Design\1172-shs-ban.dwg
 PROJECT: 72 over BRG. CA. Data\Design\1172-shs-ban.dwg

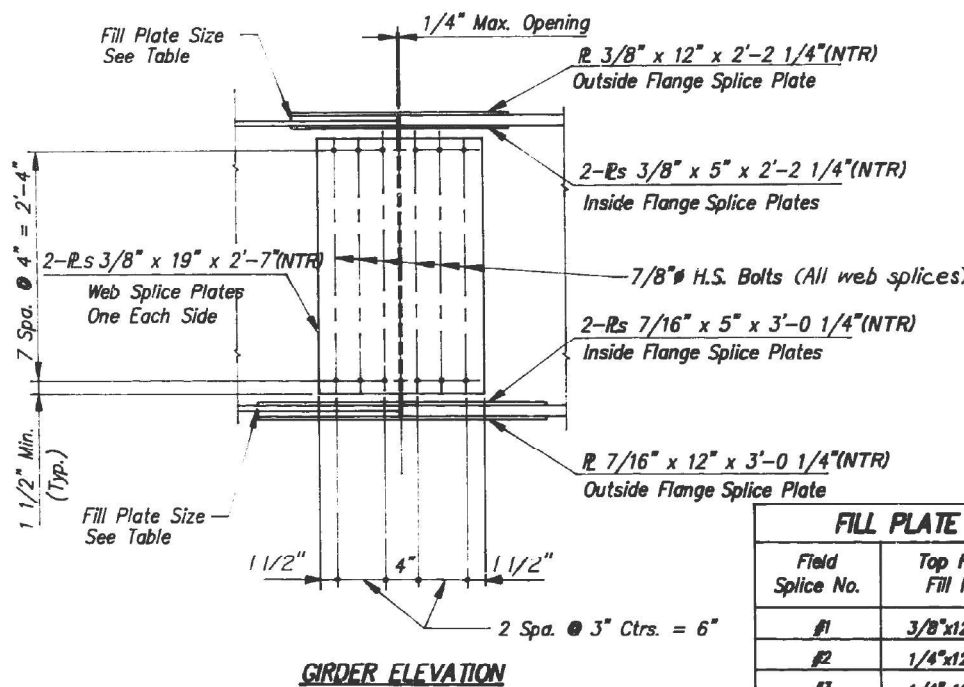
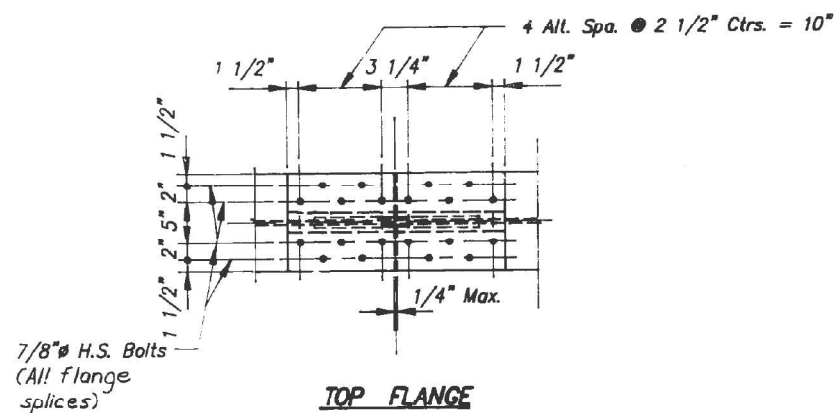
USER NAME = gorengautab	DESIGNED -	REVISED -
DRAWN -	REVISED -	
PLOT SCALE = 100,0000' / in.	CHECKED -	REVISED -
PLOT DATE = 3/15/2021	DATE -	REVISED -

STATE OF ILLINOIS
DEPARTMENT OF TRANSPORTATION

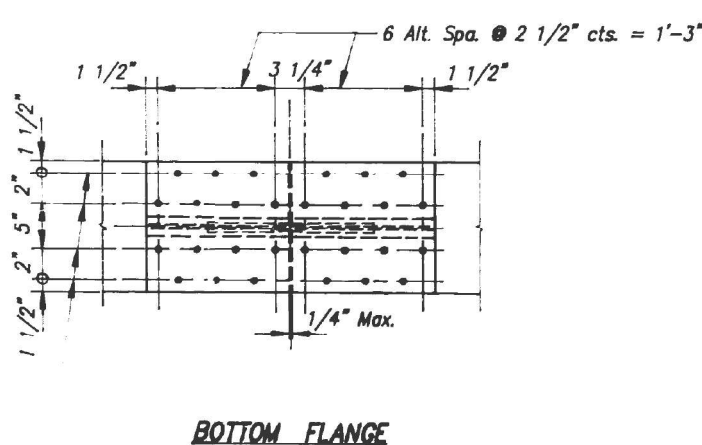
FRAMING PLAN, SN 056-0058
US 14 OVER FOX RIVER

SCALE: SHEET 2 OF 4 SHEETS STA. TO STA.

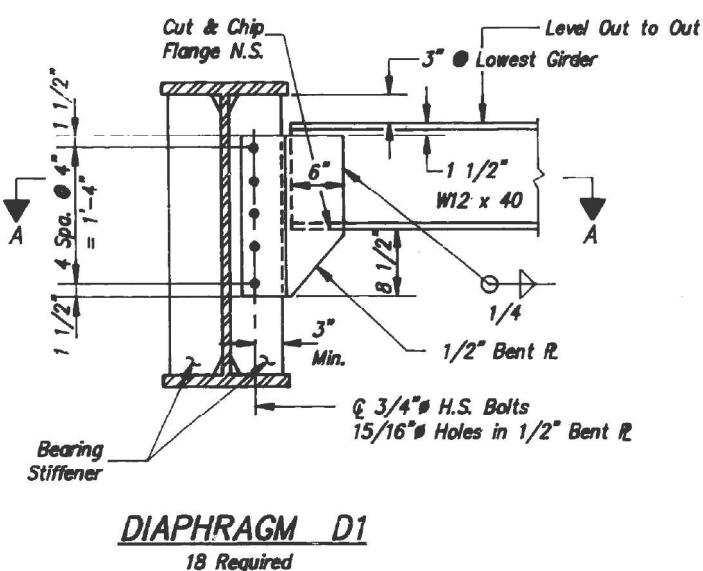
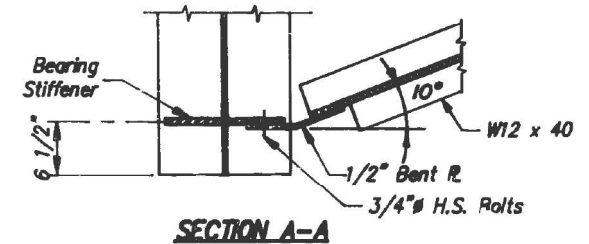
F.A.P. RTE. 305	SECTION 2021-051-BP	COUNTY McHenry	TOTAL SHEETS 19	SHEET NO. 9
			CONTRACT NO. 62N90	
ILLINOIS FED. AID PROJECT				



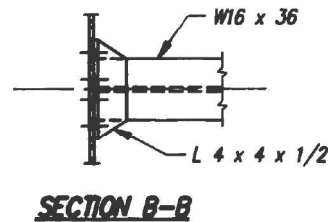
FILL PLATE SIZE TABLE		
Field Splice No.	Top Flange Fill Plate	Bottom Flange Fill Plate
#1	3/8"x12"x1'-1"	1/2"x12"x1'-6"
#2	1/4"x12"x1'-1"	11/16"x12"x1'-6"
#3	1/4"x12"x1'-1"	9/16"x12"x1'-6"



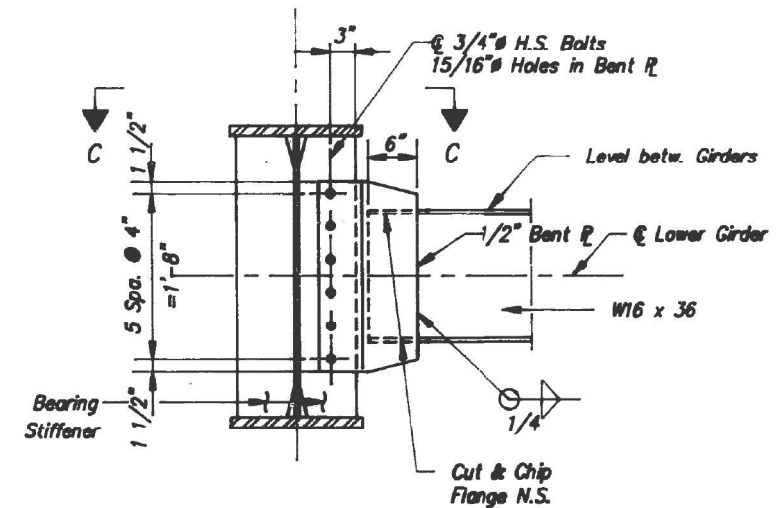
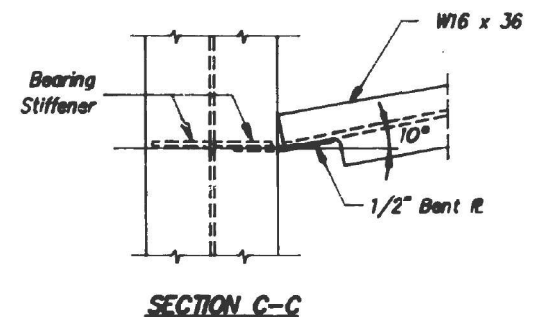
FIELD SPLICE DETAILS
30 Required



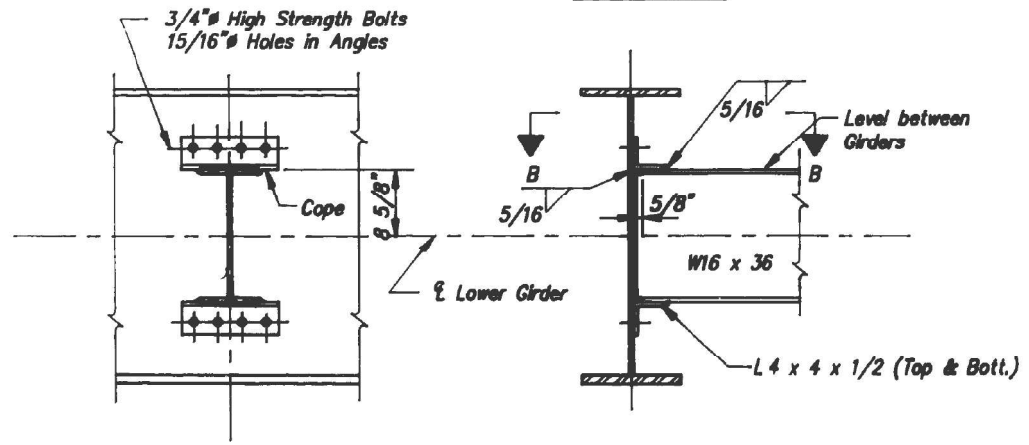
DIAPHRAGM D1
18 Required



SECTION B-B



DIAPHRAGM D3
27 Required



DIAPHRAGM D2
99 Required

FOR INFORMATION ONLY

MODEL: Default
 FILE NAME: p:\pub\baronm.dwg
 PLOT DATE: 3/15/2021
 PLOT SCALE: 100,0000' / in.
 CHECKED: -
 DATE: -
 DESIGNED: -
 DRAWN: -
 REVISED: -
 REVISED: -
 REVISED: -
 REVISED: -
 USER NAME = gorengautab

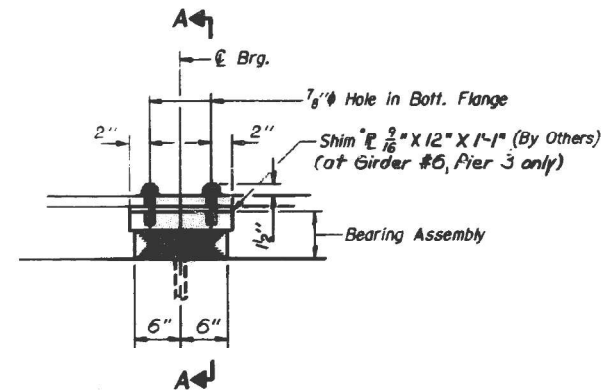
USER NAME = gorengautab	DESIGNED -	REVISED -
DRAWN -	REVISED -	REVISED -
PLOT SCALE = 100,0000' / in.	CHECKED -	REVISED -
PLOT DATE = 3/15/2021	DATE -	REVISED -

STATE OF ILLINOIS
DEPARTMENT OF TRANSPORTATION

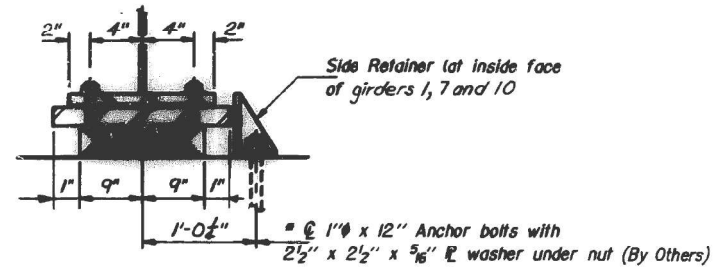
STEEL DETAILS, SN 056-0058
US 14 OVER FOX RIVER

SCALE: SHEET 3 OF 4 SHEETS STA. TO STA.

F.A.P. RTE. 305	SECTION 2021-051-BP	COUNTY McHenry	TOTAL SHEETS 19	SHEET NO. 10
			CONTRACT NO. 62N90	
ILLINOIS FED. AID PROJECT				



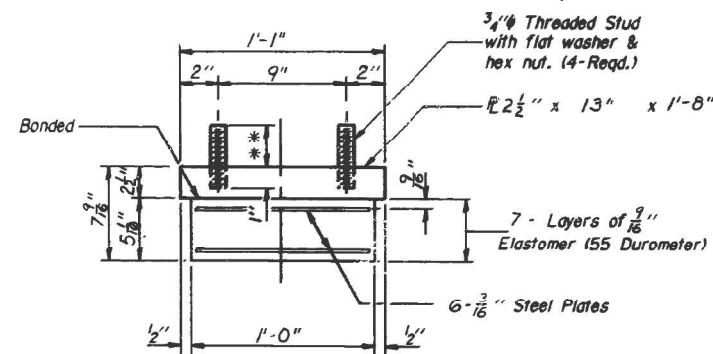
ELEVATION AT PIERS 1 & 3



SECTION A-A

TYPE I ELASTOMERIC EXP. BRG.

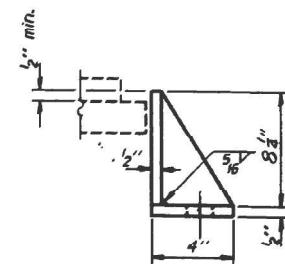
(20 Required)



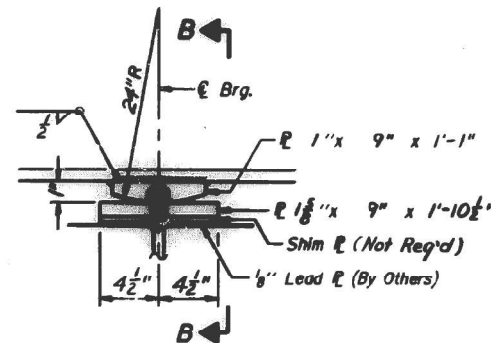
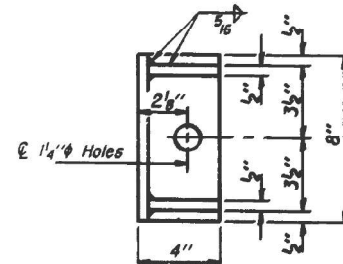
BEARING ASSEMBLY

Note: Shim plates shall not be placed under Bearing Assembly.

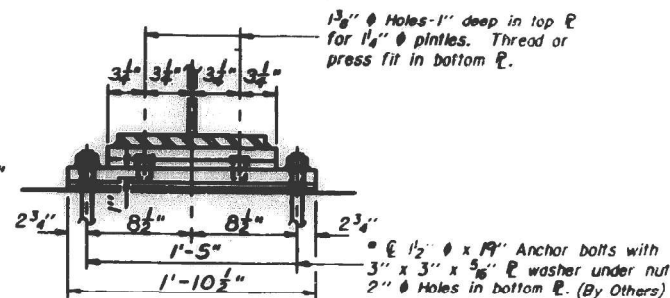
- { 3": All Girders @ Pier 1
- ** { 3 3/8": Girder #6 @ Pier 3
- { 2 7/8": All other Girders @ Pier 3



SIDE RETAINER



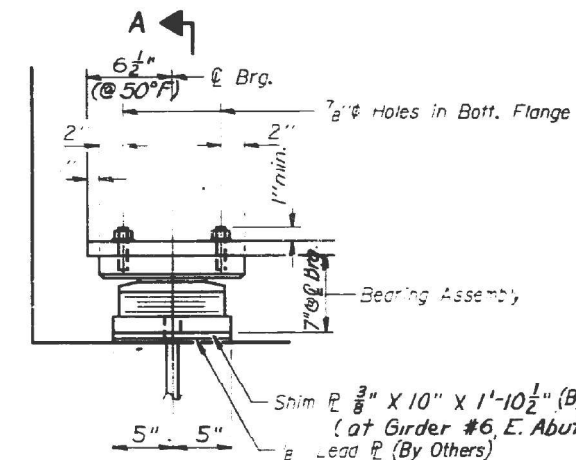
ELEVATION AT PIER 2



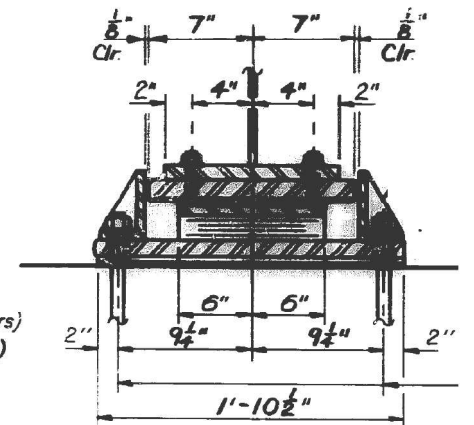
SECTION B-B

FIXED BEARING

(10 Required)



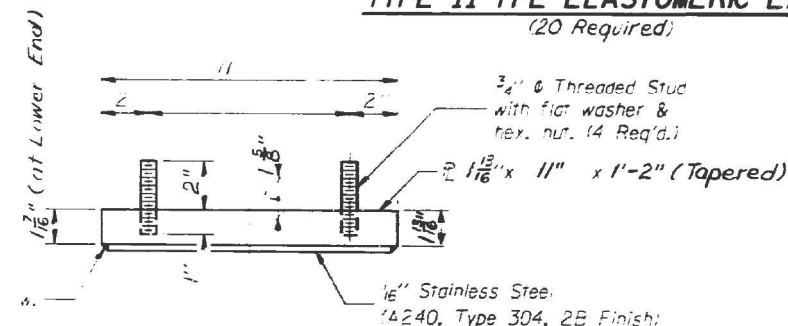
ELEVATION AT ABUT.



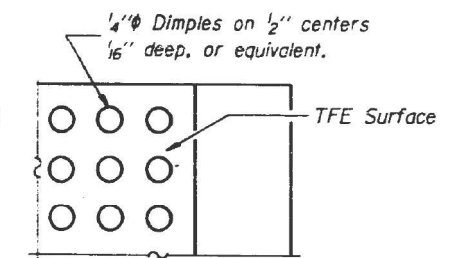
SECTION A-A

TYPE II TFE ELASTOMERIC EXP. BRG.

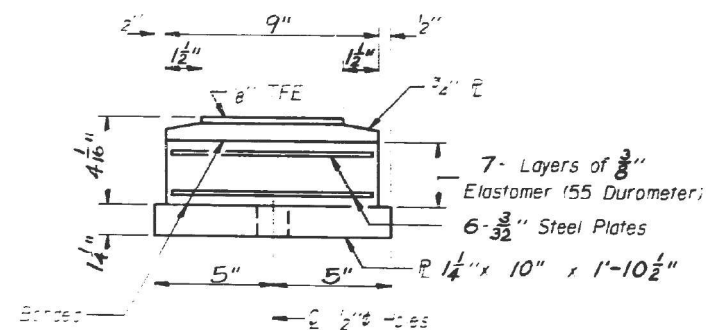
(20 Required)



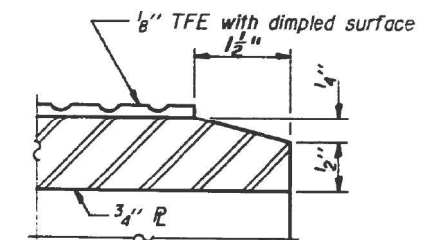
TOP BEARING ASSEMBLY



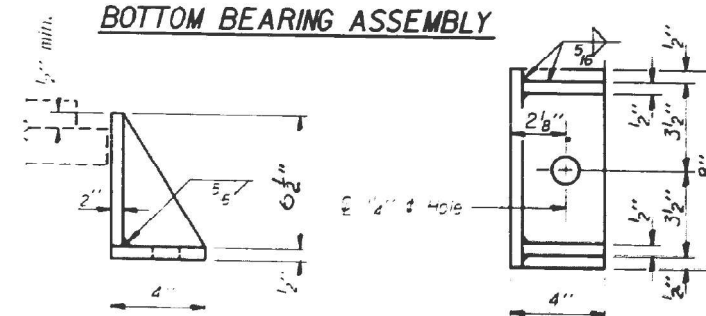
PLAN-TFE SURFACE



BOTTOM BEARING ASSEMBLY



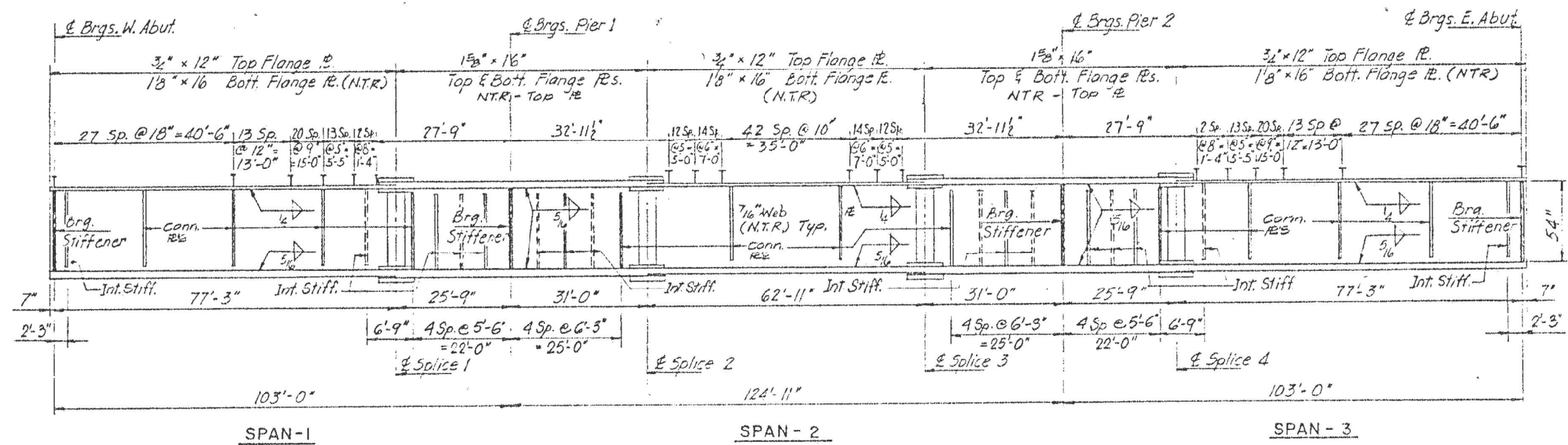
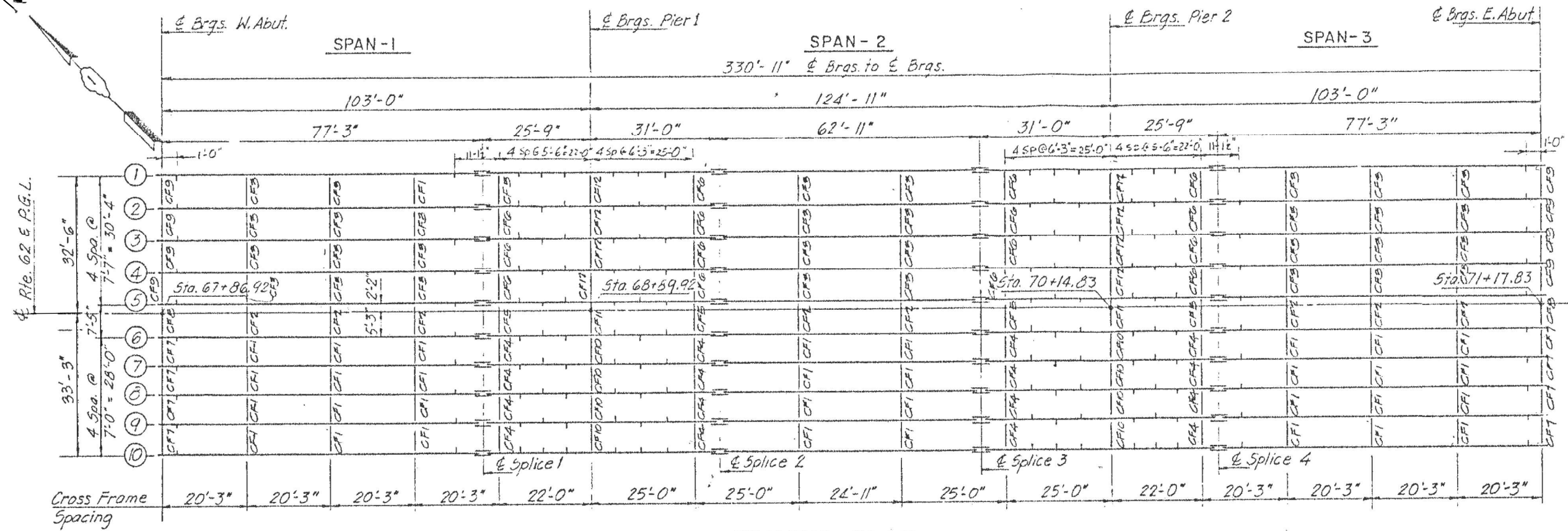
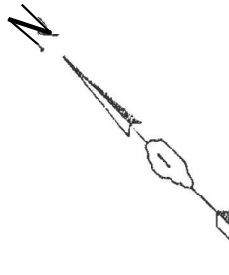
SECTION THRU TFE



SIDE RETAINER

FOR INFORMATION ONLY

MODEL: Default
 FILE NAME: p:\pub\baronon.dwg
 PLOT DATE: 3/15/2021
 PLOT SCALE: = 100,0000' / in.
 USER NAME: gorengautab
 DESIGNED: -
 DRAWN: -
 CHECKED: -
 DATE: -
 REVISED: -
 REVISED: -
 REVISED: -
 REVISED: -
 STATE OF ILLINOIS
 DEPARTMENT OF TRANSPORTATION
 BEARING DETAILS, SN 056-0058
 US 14 OVER FOX RIVER
 SCALE: SHEET 4 OF 4 SHEETS STA. TO STA.
 F.A.P. RTE. SECTION COUNTY TOTAL SHEETS SHEET NO.
 305 2021-051-BP McHenry 19 11
 CONTRACT NO. 62N90
 ILLINOIS FED. AID PROJECT



FOR INFORMATION ONLY

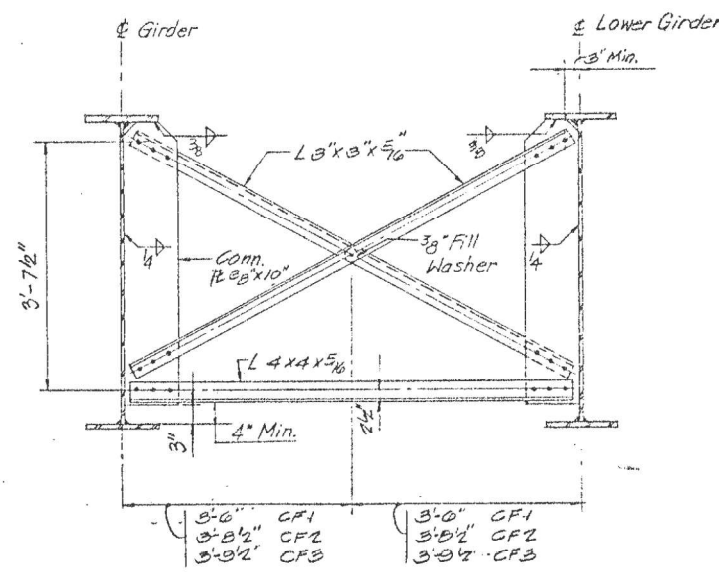
MODEL: Default
 FILE NAME: p:\pub\baronm.dwg
 PROJECT: 72 over RRCA\Drawings\DOT Office\Drawings\1\Project\72 over RRCA\Drawings\DOT Office\Drawings\1\72-over-fox-river.dwg

USER NAME = gorengautab	DESIGNED -	REVISED -
DRAWN -	REVISED -	
PLOT SCALE = 100,0000' / in.	CHECKED -	REVISED -
PLOT DATE = 3/15/2021	DATE -	REVISED -

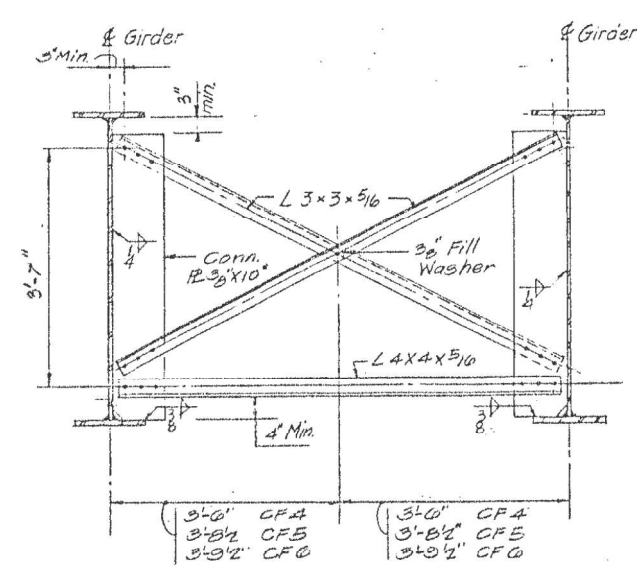
STATE OF ILLINOIS
DEPARTMENT OF TRANSPORTATION

FRAMING PLAN, SN 056-0059 IL 62 OVER FOX RIVER			
SCALE:	SHEET 2	OF 4 SHEETS	STA. TO STA.

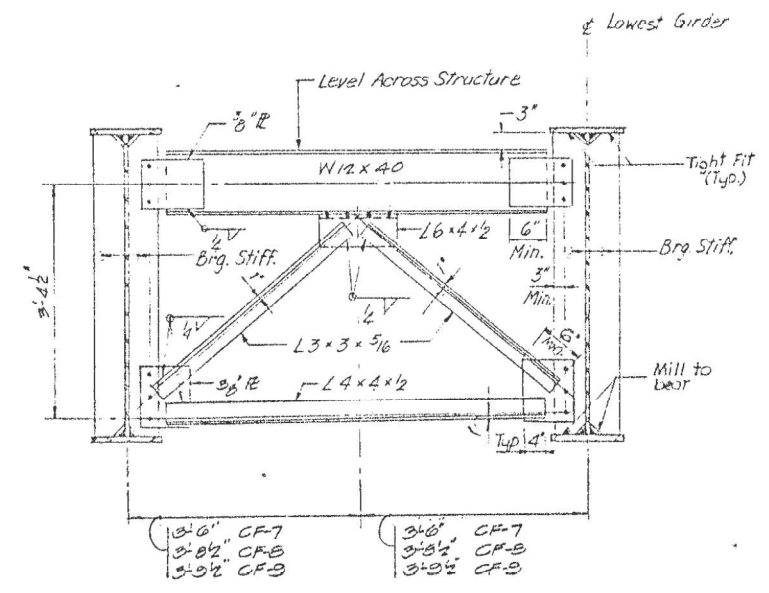
F.A.P. RTE. 339	SECTION 2021-051-BP	COUNTY McHenry	TOTAL SHEETS 19	SHEET NO. 13
			CONTRACT NO. 62N90	
ILLINOIS FED. AID PROJECT				



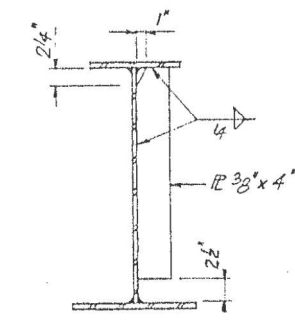
CROSS FRAME - CF1, CF2 & CF3
 CF1 (32 REQ'D)
 CF2 (8 REQ'D)
 CF3 (32 REQ'D)



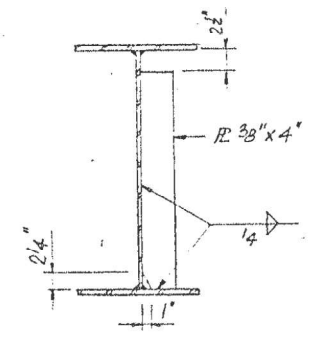
CROSS FRAME - CF4, CF5 & CF6
 CF4 (16 REQ'D)
 CF5 (4 REQ'D)
 CF6 (16 REQ'D)



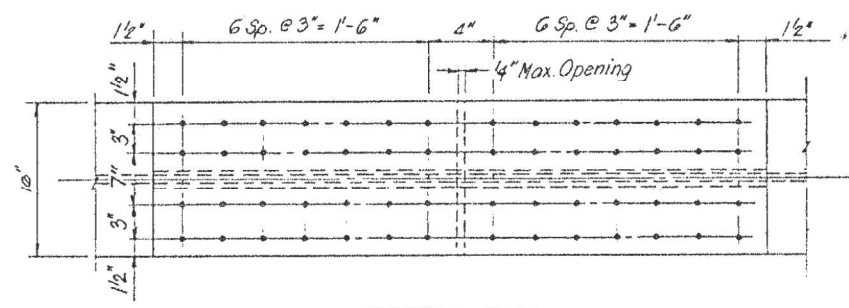
END CROSS FRAME - CF7, CF8 & CF9
 CF7 (8 REQ'D)
 CF8 (2 REQ'D)
 CF9 (8 REQ'D)



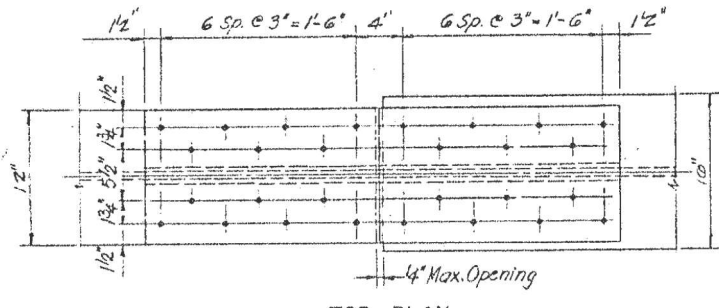
INTERMEDIATE STIFFENER IN SPANS



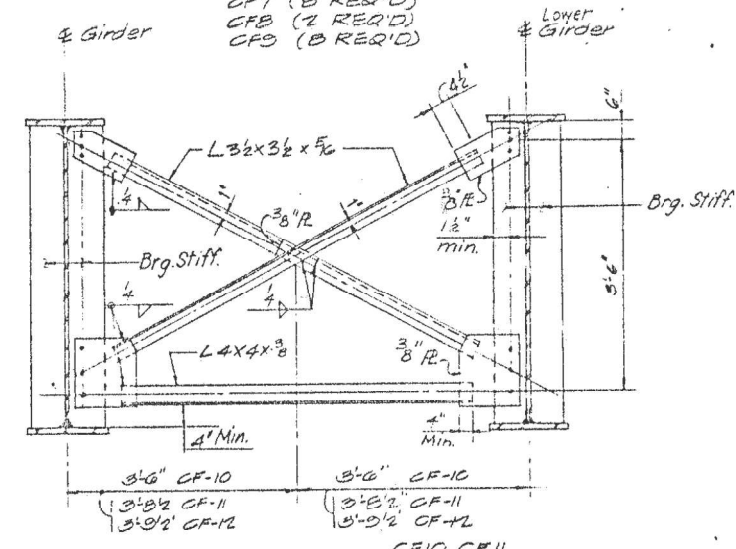
INTERMEDIATE STIFFENER NEAR PIERS



BOTTOM PLAN

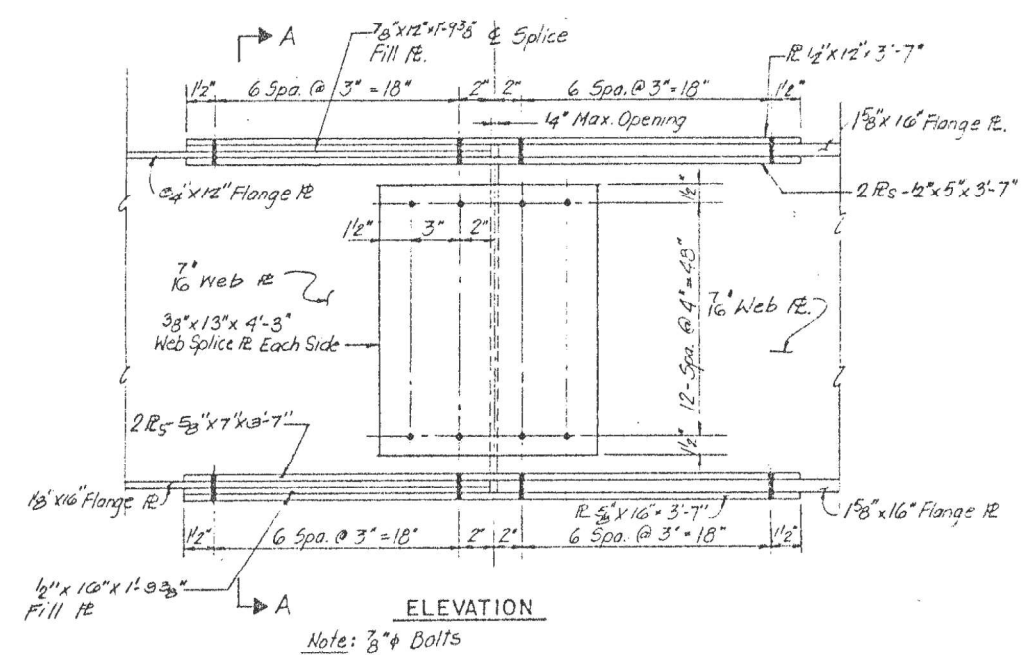


TOP PLAN



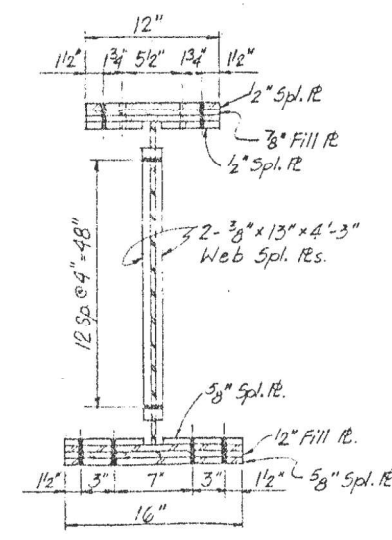
CROSS FRAME - CF10, CF11 & CF12
 CF10 (8 REQ'D)
 CF11 (2 REQ'D)
 CF12 (8 REQ'D)

FOR INFORMATION ONLY

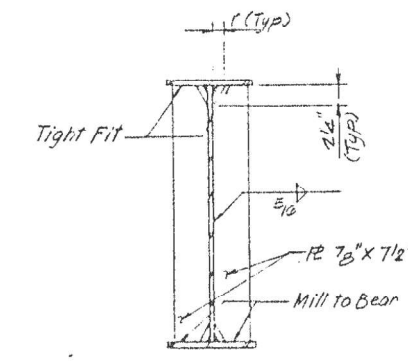


ELEVATION

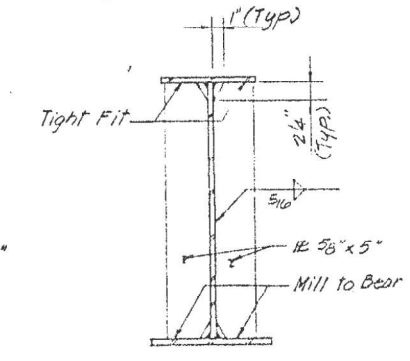
Note: 3/8 inch diameter bolts



SECTION A-A

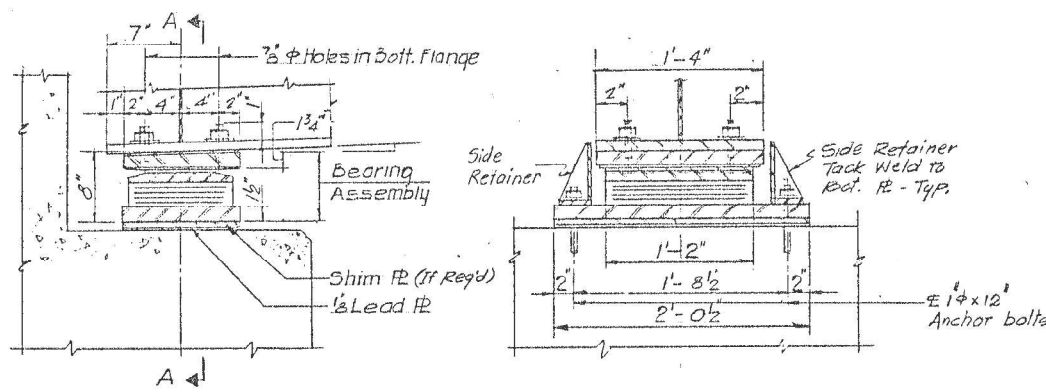


BEARING STIFFENER AT PIERS



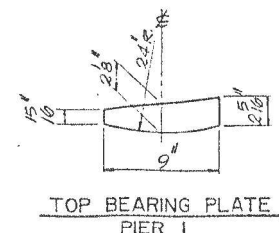
BEARING STIFFENER AT ABUTMENTS

MODEL: Default
 FILE NAME: p:\mhammond.dwg
 PLOT DATE: 3/15/2021
 PLOT SCALE: = 100,0000' / in.
 USER NAME: gorengautab
 DESIGNED: -
 DRAWN: -
 CHECKED: -
 DATE: -
 REVISED: -
 REVISED: -
 REVISED: -
 REVISED: -
 STATE OF ILLINOIS
 DEPARTMENT OF TRANSPORTATION
 STEEL DETAILS, SN 056-0059
 IL 62 OVER FOX RIVER
 SCALE: SHEET 3 OF 4 SHEETS STA. TO STA.
 F.A.P. RTE. SECTION COUNTY TOTAL SHEETS SHEET NO.
 339 2021-051-BP McHenry 19 14
 CONTRACT NO. 62N90
 ILLINOIS FED. AID PROJECT

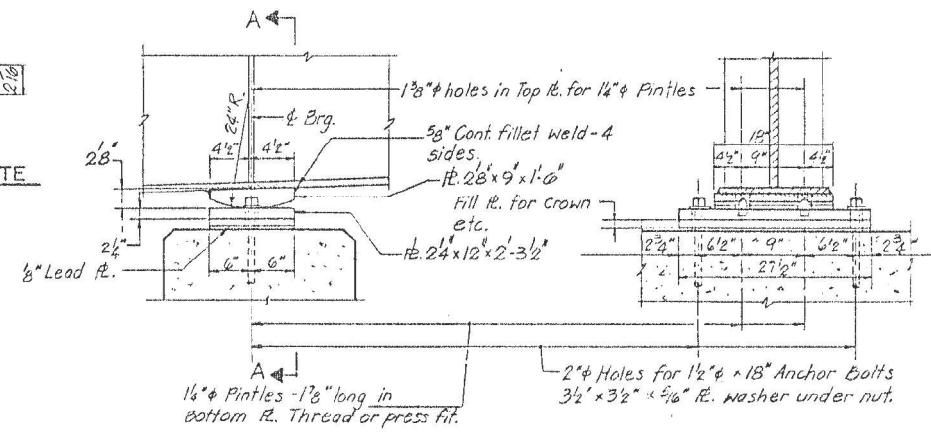


ELEVATION AT E. ABUTMENT

SECTION A - A



TOP BEARING PLATE
PIER 1

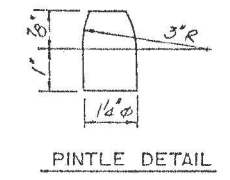


ELEVATION

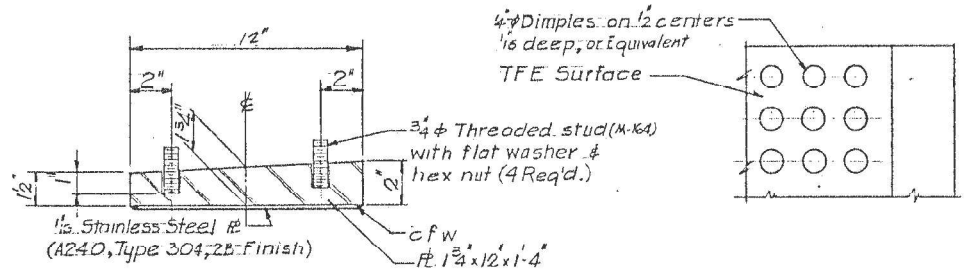
SECTION A - A

FIXED BEARING AT PIER 1

No. Req'd.: 10

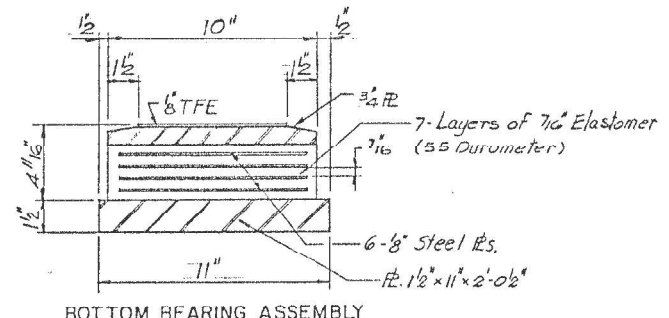


PINTLE DETAIL

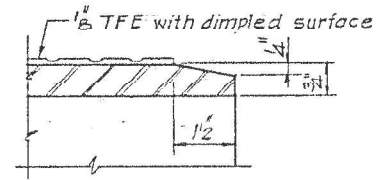


TOP BEARING ASSEMBLY

PLAN - TFE SURFACE

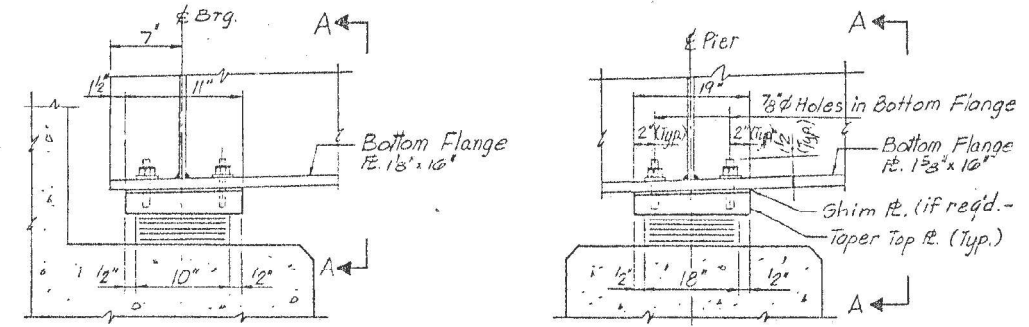


BOTTOM BEARING ASSEMBLY



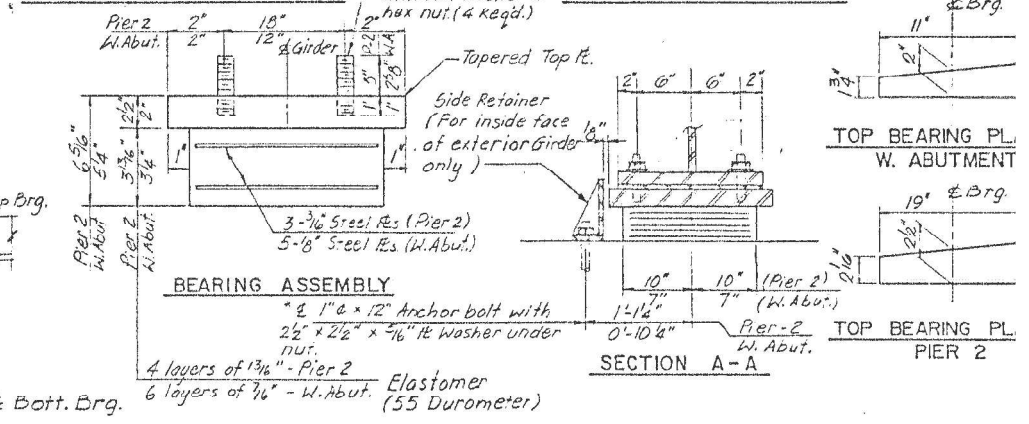
SECTION THRU TFE

Note: The 1/8" TFE sheet shall be bonded directly to the top steel plate with a two component, medium viscosity epoxy resin, conforming to the requirements of the Federal Specification MMM-A-134, Type I. The bond agent shall be applied on the full area of the contact surface. Bonding of 1/8" TFE sheet during vulcanizing process will be permitted provided the process and method of adjusting assembly height is approved by the Engineer.



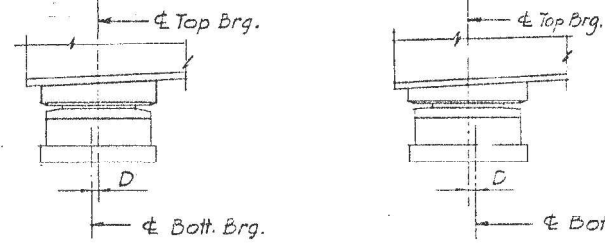
ELEVATION AT W. ABUTMENT

ELEVATION AT PIER 2



TYPE I ELASTOMERIC EXPANSION BRG. - W. ABUTMENT

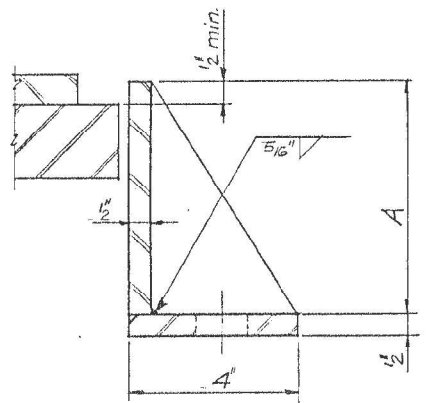
TYPE I ELASTOMERIC EXPANSION BRG. - PIER 2



BELOW 50°F (Move bott. brg. away from fixed brg.)

ABOVE 50°F (Move bott. brg. toward fixed brg.)

SETTING ANCHOR BOLTS AT EXPANSION BEARING



SIDE RETAINER
(Equivalent Rolled Angle with stiffeners will be allowed in lieu of Welded Plates)

TYPE II ELASTOMERIC EXPANSION BEARING - E. ABUTMENT

No. REQ'D.: 10

FOR INFORMATION ONLY

MODEL: Default FILE NAME: p:\pub\mcom\dot\illinc\gov\PIWDOT\Documents\DOT Office\Drawings\1\Project\1172 over FOX RIVER\1172-218-Bearing.dwg

USER NAME = gorengautab	DESIGNED -	REVISED -
DRAWN -	REVISED -	
PLOT SCALE = 100,0000' / in.	CHECKED -	REVISED -
PLOT DATE = 3/15/2021	DATE -	REVISED -

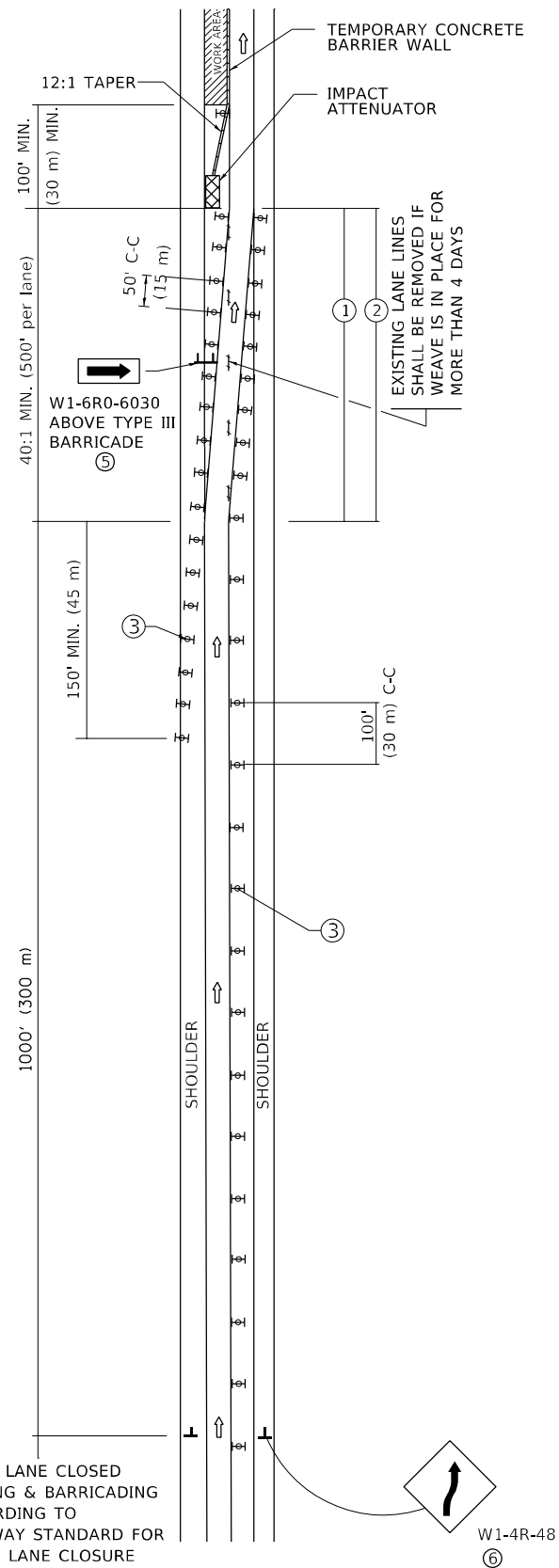
STATE OF ILLINOIS
DEPARTMENT OF TRANSPORTATION

BEARING DETAILS, SN 056-0059
IL 62 OVER FOX RIVER

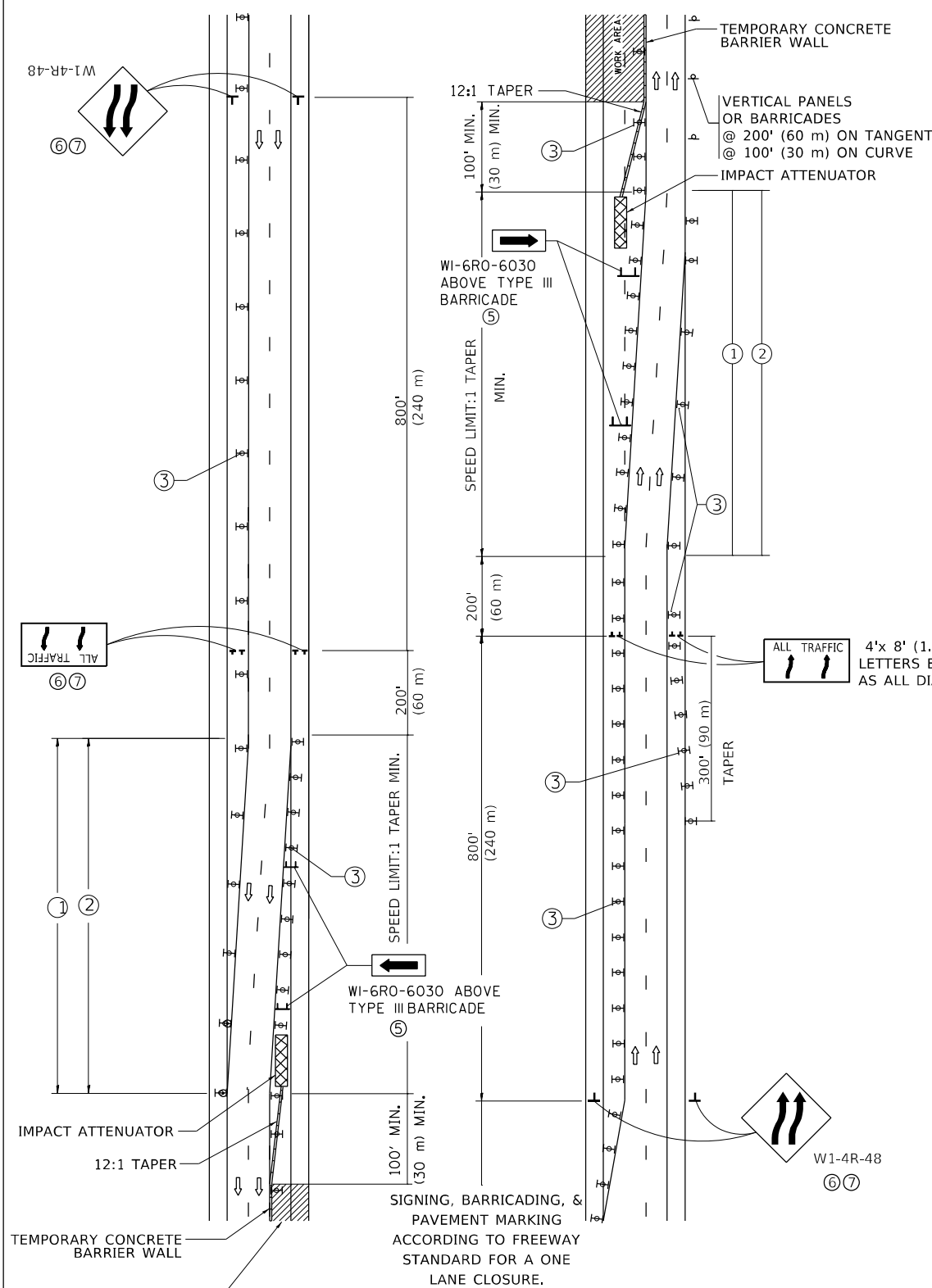
SCALE: SHEET 4 OF 4 SHEETS STA. TO STA.

F.A.P. RTE. 339	SECTION 2021-051-BP	COUNTY McHenry	TOTAL SHEETS 19	SHEET NO. 15
ILLINOIS FED. AID PROJECT			CONTRACT NO. 62N90	

SINGLE LANE WEAVE



MULTI-LANE WEAVE



GENERAL NOTES:

- ① EXISTING CONFLICTING PAVEMENT MARKING LINES SHALL BE REMOVED. PAVEMENT MARKING REMOVAL SHALL NOT BE REQUIRED FOR SINGLE LANE WEAVES UNDER 4 DAYS IN DURATION.
- ② CONTINUOUS REFLECTIVE TEMPORARY PAVEMENT MARKING TAPE SHALL BE PLACED THROUGHOUT THE TAPER AND FOR 300' (90 m) ALONG SIDE THE WORK AREA WHERE THE CLOSURE TIME IS GREATER THAN FOURTEEN DAYS. THE LEFT EDGE LINE SHALL BE YELLOW AND THE RIGHT EDGE LINE SHALL BE WHITE. FOR MULTI-LANE WEAVES LANE LINES SHALL BE 5 INCH, 10'-30' (3 m-9 m) SKIP DASH, WHITE.
- ③ PLASTIC DRUMS WITH STEADY BURN LIGHTS AT 50' (15 m) C-C SPACING IN TAPERS AND 100' (30 m) C-C SPACING IN TANGENTS.
- ④ ALL SIGNS SHALL BE POST MOUNTED IF THE CLOSURE TIME EXCEEDS FOUR DAYS.
- ⑤ TYPE III BARRICADES MAY BE OMITTED FOR SINGLE-LANE WEAVES UNDER 24-HOURS IN DURATION. W1-6 SIGNS WILL STILL BE REQUIRED. IF THE WIDTH OF OFFSET IS LESS THAN 6' THEN THE TYPE III BARRICADE WITH ATTACHED ARROW SIGN PANEL CAN BE ELIMINATED IN THE TAPER AREAS.
- ⑥ WHEN THE LENGTH OF THE SHIFTED SEGMENT (DISTANCE BETWEEN WEAVE POINTS) IS LESS THAN 1500', DOUBLE REVERSE CURVE SIGNS (W24-1) SHOULD BE USED INSTEAD OF THE REVERSE CURVE (W1-4) SIGNS. ARROWS ON THE 4'X8' "ALL TRAFFIC" SIGNS SHALL BE THE SAME SHAPE.
- ⑦ THE NUMBER OF ARROWS ON THESE SIGNS SHALL MATCH THE NUMBER OF LANES OPEN TO TRAFFIC.

SYMBOLS

- DIRECTION OF TRAFFIC
- WORK AREA
- SIGN ON PORTABLE OR PERMANENT SUPPORT
- TYPE II BARRICADE OR DRUM WITH MONO-DIRECTIONAL STEADY BURNING LIGHT
- TEMPORARY CONCRETE BARRIER WALL
- IMPACT ATTENUATOR
- W1-4R-48
- W24-1-48

ALL DIMENSIONS ARE IN INCHES (MILLIMETERS) UNLESS OTHERWISE SHOWN

** 341: 305: 339

*COOK & MCHENRY

MODEL: Default
FILE NAME: p:\mch\mchroom.dwg
PROJECT: 172 over RR/CAD/Design/Design/Design/Design.dwg

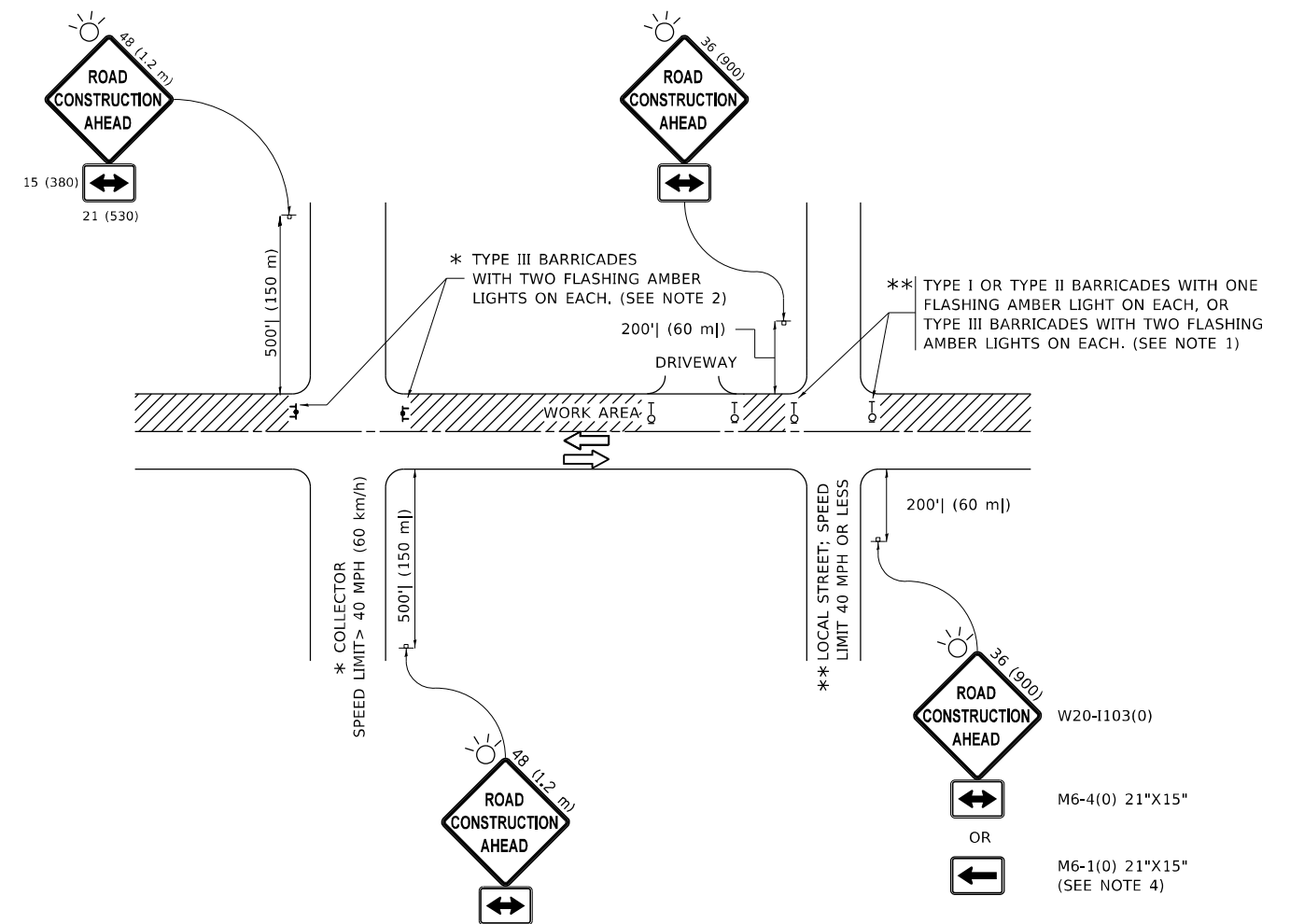
USER NAME = gorengautab	DESIGNED - D.W.S.	REVISED - J.A.F. 02-06
PLOT SCALE = 100,0000' / in.	CHECKED -	REVISED - S.P.B. 01-07
PLOT DATE = 3/15/2021	DATE - 02-87	REVISED - S.P.B. 12-09
		REVISED - M.D. 06-13

STATE OF ILLINOIS
DEPARTMENT OF TRANSPORTATION

TRAFFIC CONTROL DETAILS FOR
FREEWAY SINGLE & MULTI-LANE WEAVE

SCALE: NONE SHEET 1 OF 1 SHEETS STA. TO STA.

F.A.P. RTE.	SECTION	COUNTY	TOTAL SHEETS	SHEET NO.
**	2021-051-BP	-	19	16
TC-09			CONTRACT NO. 62N90	
ILLINOIS FED. AID PROJECT				



NOTES:

- SIDE ROAD WITH A SPEED LIMIT OF 40 MPH (60 km/h) OR LESS AS SHOWN ON THE DRAWING AND AS DIRECTED BY THE ENGINEER:
 - ONE "ROAD CONSTRUCTION AHEAD" SIGN 36 x 36 (900x900) WITH A FLASHER MOUNTED ON IT APPROXIMATELY 200' (60 m) IN ADVANCE OF THE MAIN ROUTE.
 - THE CLOSED PORTION OF THE MAIN ROUTE SHALL BE PROTECTED BY BLOCKING WITH TYPE I, TYPE II OR TYPE III BARRICADES, 1/3 OF THE CROSS SECTION OF THE CLOSED PORTION.
- SIDE ROAD WITH A SPEED LIMIT GREATER THAN 40 MPH (60 km/h) AS SHOWN ON THE DRAWING AND AS DIRECTED BY THE ENGINEER:
 - ONE "ROAD CONSTRUCTION AHEAD" SIGN 48 x 48 (1.2 m x 1.2 m) WITH A FLASHER MOUNTED ON IT APPROXIMATELY 500' (150 m) IN ADVANCE OF THE MAIN ROUTE.
 - THE CLOSED PORTION OF THE MAIN ROUTE SHALL BE PROTECTED BY BLOCKING WITH TYPE III BARRICADES, 1/2 OF THE CROSS SECTION OF THE CLOSED PORTION.
- CONES MAY BE SUBSTITUTED FOR BARRICADES OR DRUMS AT HALF THE SPACING DURING DAY OPERATIONS. CONES SHALL BE A MINIMUM OF 28 (710) IN HEIGHT.
- SIGNING AND THE WORK ZONE, A SINGLE HEADED ARROW (M6-1) SHALL BE USED IN LIEU OF THE DOUBLE HEADED ARROW (M6-4).
- WHEN WORK IS BEING PERFORMED ON A SIDE ROAD OR DRIVEWAY, FOLLOW THE APPLICABLE STANDARD(S). THE DIRECTIONAL ARROW (M6-1 OR M6-4) SHALL BE COVERED OR REMOVED WHEN NO LONGER CONSISTENT WITH THE TRAFFIC CONTROL SET-UP.
- ADVANCE WARNING SIGNS ARE TO BE OMITTED ON DRIVEWAYS UNLESS OTHERWISE SPECIFIED IN THE PLANS OR BY THE ENGINEER.
- THE TRAFFIC CONTROL AND PROTECTION FOR SIDE ROADS, INTERSECTIONS, AND DRIVEWAYS SHALL BE INCLUDED IN THE COST OF SPECIFIED TRAFFIC CONTROL STANDARDS OR ITEMS.

All dimensions are in inches (millimeters) unless otherwise shown.

** 341; 305; 339

* COOK & MCHENRY

**STATE OF ILLINOIS
DEPARTMENT OF TRANSPORTATION**

**TRAFFIC CONTROL AND PROTECTION FOR
SIDE ROADS, INTERSECTIONS, AND DRIVEWAYS**

SCALE: NONE SHEET 1 OF 1 SHEETS STA. TO STA.

F.A.P. RTE.	SECTION	COUNTY	TOTAL SHEETS	SHEET NO.
**	2021-051-BP	*	19	17
TC-10			CONTRACT NO. 62N90	
ILLINOIS FED. AID PROJECT				

MODEL: Default
 FILE NAME: p:\m\m\room\dot\illinois\gov\p\w\dot\Documents\DOT_Offices\Distrefc_1\Project\111_72_over\RRCA\DOT\dot\Design\DistEst.dgn

USER NAME = gorengautab	DESIGNED - L.H.A.	REVISED - A. HOUSEH 10-15-96
PLOT SCALE = 100,0000' / in.	CHECKED -	REVISED - T. RAMMACHER 01-06-00
PLOT DATE = 3/15/2021	DATE - 06-89	REVISED - A. SCHUETZE 07-01-13
		REVISED - A. SCHUETZE 09-15-16

TURN BAY ENTRANCE AT START OF LANE CLOSURE TAPER

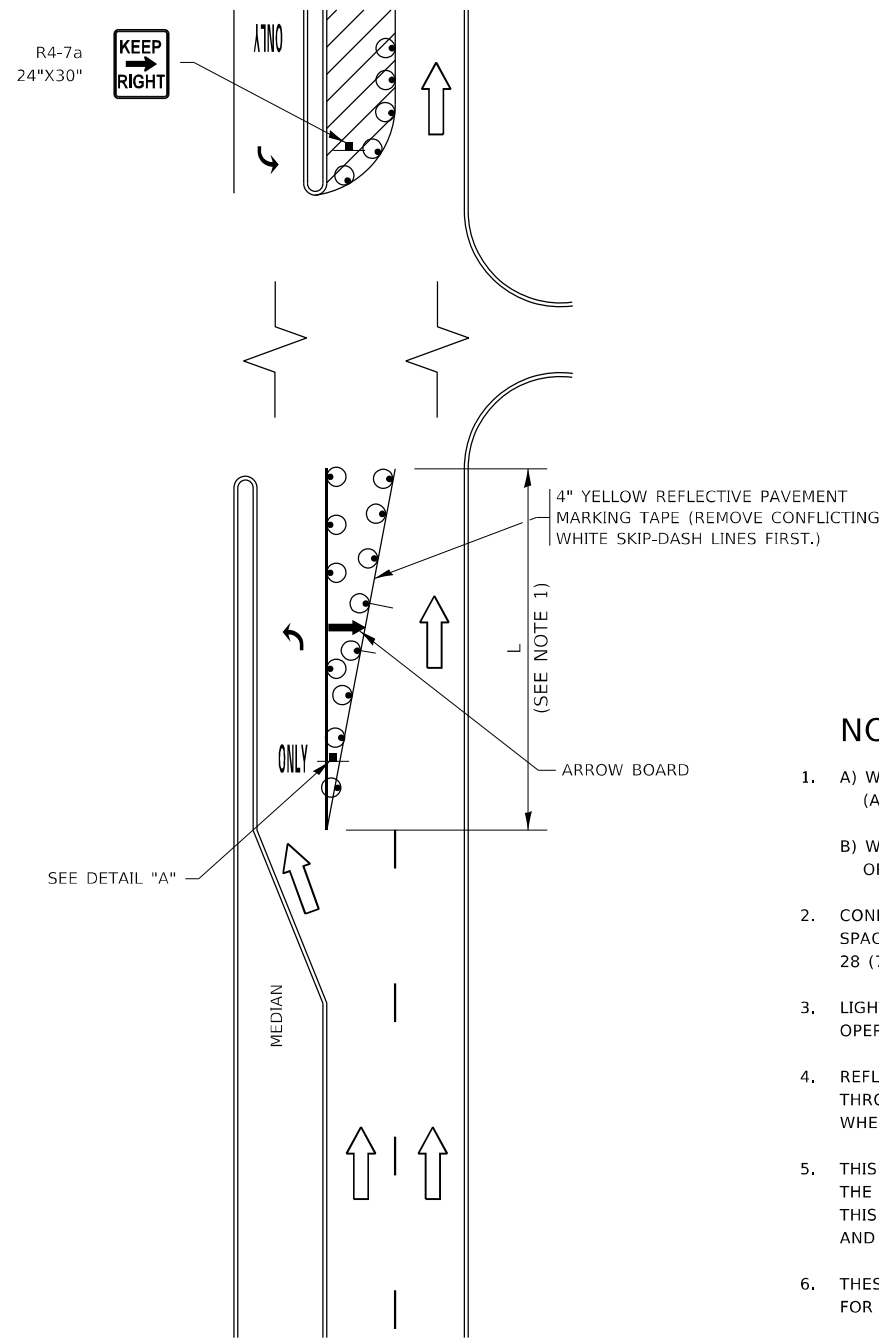


FIGURE 1

TURN BAY ENTRANCE WITHIN A LANE CLOSURE

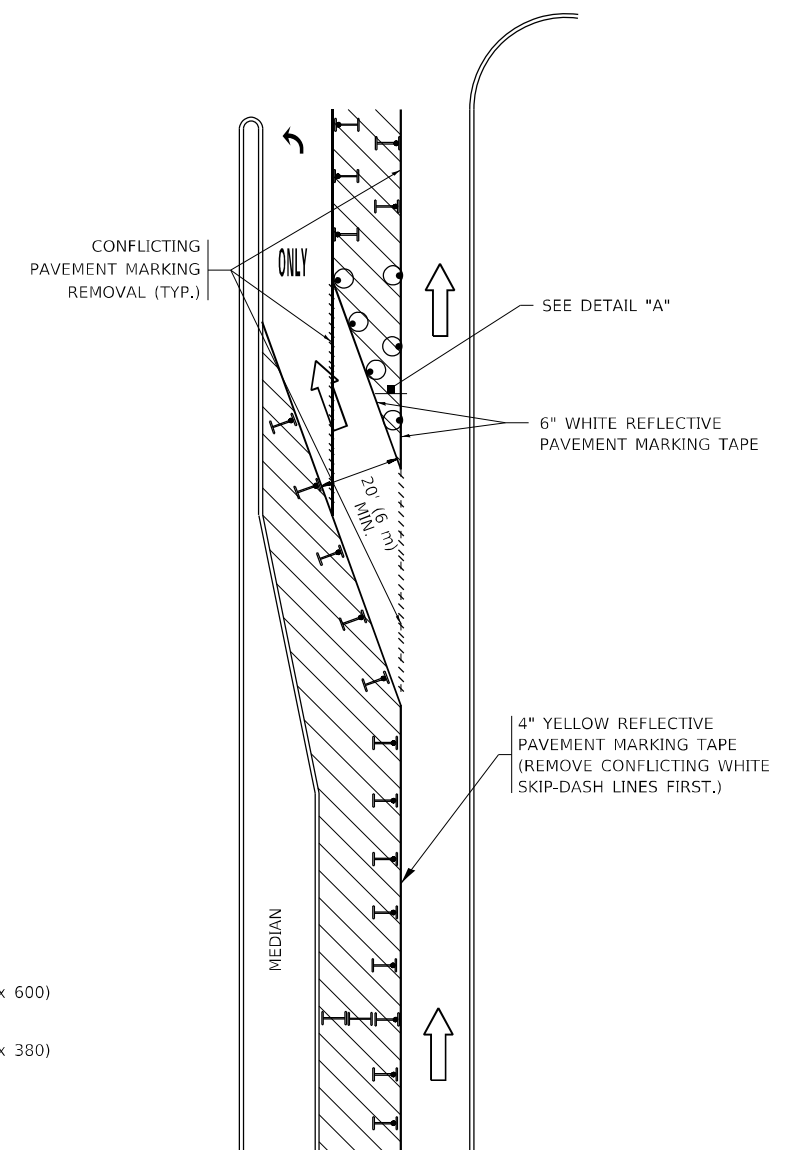


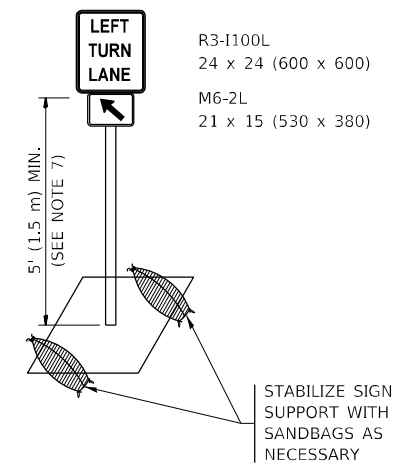
FIGURE 2

LEGEND

- WORK AREA
- LANE OPEN TO TRAFFIC
- ARROW BOARD
- TYPE I OR II BARRICADE OR DRUM WITH STEADY BURN LIGHT
- DRUM WITH STEADY BURN LIGHT
- SIGN ASSEMBLY
- TYPE I OR II CHECK BARRICADE WITH FLASHING LIGHT

NOTES:

1. A) WHEN "L" IS \leq THE STORAGE LENGTH OF THE TURN LANE (AS SHOWN IN FIG. 1), USE FIGURE 1.
 B) WHEN "L" IS $>$ THE STORAGE LENGTH OF THE TURN LANE OR THE TURN LANE IS WITHIN THE LANE CLOSURE, USE FIGURE 2.
2. CONES MAY BE SUBSTITUTED FOR BARRICADES OR DRUMS AT HALF THE SPACING DURING DAY OPERATIONS. CONES SHALL BE A MINIMUM OF 28 (710) IN HEIGHT.
3. LIGHTS WILL NOT BE REQUIRED ON BARRICADES OR DRUMS FOR DAY OPERATIONS. ALL LIGHTS SHALL BE MONODIRECTIONAL.
4. REFLECTIVE TEMPORARY PAVEMENT MARKINGS SHALL BE PLACED THROUGHOUT THE BARRICADED AREAS OF EACH TURN BAY AS SHOWN WHERE THE CLOSURE TIME IS GREATER THAN FOURTEEN (14) DAYS.
5. THIS APPLICATION ALSO APPLIES WHEN WORK IS BEING PERFORMED IN THE RIGHT LANE(S) AND THE RIGHT TURN BAY IS TO REMAIN OPEN. UNDER THIS CONDITION, "RIGHT TURN LANE" R3-1100R 24 x 24 (600 x 600) AND M6-2R 21 x 15 (530 x 380) SHALL BE USED.
6. THESE CONTROLS SHALL SUPPLEMENT MAINLINE TRAFFIC CONTROL FOR LANE CLOSURES.
7. THE SIGNS SHALL BE MOUNTED ABOVE THE BARRICADES/DRUMS ON SEPARATE SIGN SUPPORTS THAT MEET NCHRP 350 OR MASH REQUIREMENTS.
8. TRAFFIC CONTROL AND PROTECTION AT TURN BAYS (TO REMAIN OPEN TO TRAFFIC) SHALL BE INCLUDED IN THE COST OF SPECIFIED TRAFFIC CONTROL STANDARDS OR ITEMS.



DETAIL A

All dimensions are in inches (millimeters) unless otherwise shown.

MODEL: Default
 FILE NAME: p:\pub\mroom.dwg
 PROJECT: 72 over RR/CAD/Design/Design/Design/Design.dwg

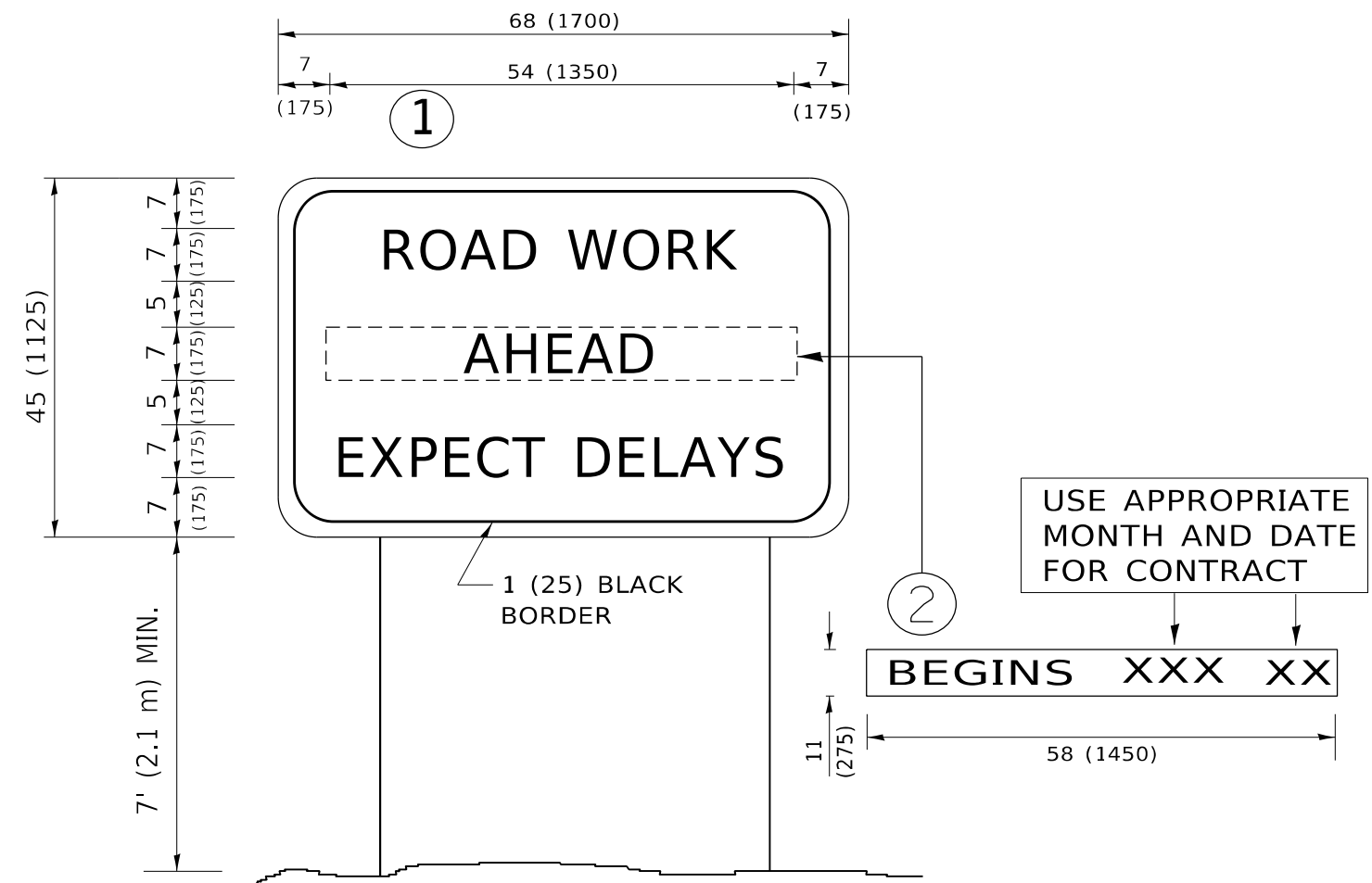
USER NAME = gorengautab	DESIGNED - T. RAMMACHER 09-08-94	REVISED - R. BORO 09-14-09
	DRAWN - A. HOUSEH 11-07-95	REVISED - A. SCHUETZE 07-01-13
PLOT SCALE = 100,0000' / in.	CHECKED - A. HOUSEH 10-12-96	REVISED - A. SCHUETZE 09-15-16
PLOT DATE = 3/15/2021	DATE - T. RAMMACHER 01-06-00	REVISED -

**STATE OF ILLINOIS
DEPARTMENT OF TRANSPORTATION**

**TRAFFIC CONTROL AND PROTECTION AT TURN BAYS
(TO REMAIN OPEN TO TRAFFIC)**

SCALE: NONE SHEET 1 OF 1 SHEETS STA. TO STA.

** 341: 305; 339		COOK & MCHENRY	
F.A. RTE.	SECTION	COUNTY	TOTAL SHEETS SHEET NO.
**	2021-051-BP	+	19 18
TC-14		CONTRACT NO. 62N90	
ILLINOIS FED. AID PROJECT			



NOTES:

1. USE BLACK LETTERING ON ORANGE BACKGROUND.
2. ERECT SIGNS IN ADVANCE OF THE LOCATION FOR THE "ROAD CONSTRUCTION AHEAD" SIGN AT LOCATIONS AS DIRECTED BY THE ENGINEER.
3. ERECT SIGN ① WITH INSTALLED PANEL ② ONE WEEK PRIOR TO THE START OF CONSTRUCTION.
4. REMOVE PANEL ② SOON AFTER THE START OF CONSTRUCTION.
5. SEE SPECIAL PROVISION FOR "TEMPORARY INFORMATION SIGNING" FOR ADDITIONAL INFORMATION.
6. ONE SIGN ASSEMBLY EQUALS 25.70 SQ. FT. (2.3 SQ. M.)
7. SHALL BE PAID FOR AS TEMPORARY INFORMATION SIGNING.

ALL DIMENSIONS ARE IN INCHES (MILLIMETERS) UNLESS OTHERWISE SHOWN.

MODEL: Default
 FILE NAME: p:\u0000\m0000\dot\illinois\gov\pwwid\Documents\DOT_Offices\Distric_1\Project\111_72_over\RRCA\Drawings\Design\DistEtd.dgn

USER NAME = gorengautab	DESIGNED -	REVISED - R. MIRS 09-15-97
	DRAWN -	REVISED - R. MIRS 12-11-97
PLOT SCALE = 100,0000 ' / in.	CHECKED -	REVISED - T. RAMMACHER 02-02-99
PLOT DATE = 3/15/2021	DATE -	REVISED - C. JUCIUS 01-31-07

**STATE OF ILLINOIS
DEPARTMENT OF TRANSPORTATION**

**ARTERIAL ROAD
INFORMATION SIGN**

SCALE: NONE SHEET 1 OF 1 SHEETS STA. TO STA.

*341: 305: 339

*COOK & MCHENRY

F.A. RTE.	SECTION	COUNTY	TOTAL SHEETS	SHEET NO.
**	2021-051-BP	*	19	19
TC-22			CONTRACT NO. 62N90	
ILLINOIS FED. AID PROJECT				