

STATE OF ILLINOIS  
DEPARTMENT OF TRANSPORTATION

F.A. RTE.	SECTION	COUNTY	TOTAL SHEETS	SHEET NO.
VAR	2021-061-LS	VARIOUS	21	1
		ILLINOIS	CONTRACT NO. 62N93	

D-91-148-21

# PROPOSED HIGHWAY PLANS

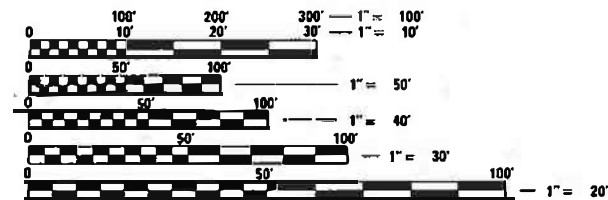
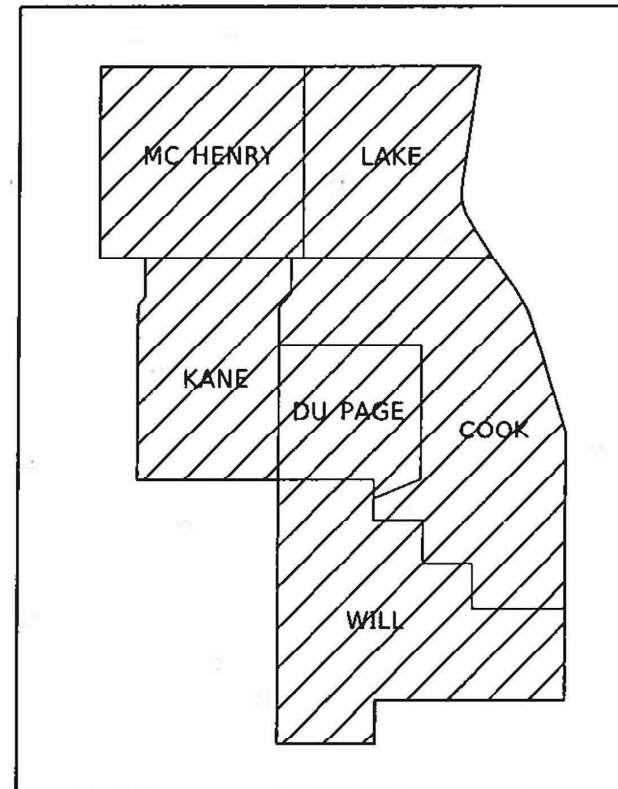
ROUTE: VARIOUS  
SECTION 2021-061-LS  
PROJECT NA  
WETLAND AREAS MANAGEMENT  
VARIOUS COUNTIES

C-91-183-21



FOR INDEX OF SHEETS, SEE SHEET NO. 2

IMPROVEMENTS ARE AT VARIOUS  
LOCATIONS WITHIN DISTRICT ONE



FULL SIZE PLANS HAVE BEEN PREPARED USING STANDARD ENGINEERING SCALES. REDUCED SIZED PLANS WILL NOT CONFORM TO STANDARD SCALES. IN MAKING MEASUREMENTS ON REDUCED PLANS, THE ABOVE SCALES MAY BE USED.

J.U.L.I.E.  
JOINT UTILITY LOCATION INFORMATION FOR EXCAVATORS  
1-800-892-0123  
OR 811

PROJECT ENGINEER JAMES STUMPNER  
PROJECT MANAGER GIOVANNA ZAFFINA (847)705-4172

GROSS LENGTH = x.xx FT. = x.xxx MILE  
NET LENGTH = x.xx FT. = x.xxx MILE

CONTRACT NO. 62N93

STATE OF ILLINOIS  
DEPARTMENT OF TRANSPORTATION

SUBMITTED March 30 20 21  
Jose River REGIONAL ENGINEER  
May 7, 2021  
Joe A. Elk  
ENGINEER OF DESIGN AND ENVIRONMENT  
May 7, 2021  
James Stumpner  
DIRECTOR OF HIGHWAYS PROJECT IMPLEMENTATION 13

PRINTED BY THE AUTHORITY  
OF THE STATE OF ILLINOIS

# INDEX OF SHEETS

SHEET NO.	DESCRIPTION
1	COVER SHEET
2	INDEX OF SHEETS, HIGHWAY STANDARDS, GENERAL NOTES
3	SUMMARY OF QUANTITIES
4	SAMPLE OF WORK ORDER
5	LOCATION MAP OF I-55 AT ARSENAL ROAD
6	LOCATION MAP OF I-55 AT WEBER ROAD
7-8	LOCATION MAP OF US 14: LUCAS TO W LAKE SHORE DRIVE
9	LOCATION MAP OF US 20 AT IL 59
10	LOCATION MAP OF IL 31 (CRYSTAL CREEK)
11	LOCATION MAP OF UPRR AT COAL CITY ROAD
12	LOCATION MAP OF US 45 AT MILLBURN BYPASS
13	LOCATION MAP OF IL 132: MUNN TO SAND LAKE
14	LOCATION MAP OF US 6 AT MARLEY CREEK
15	LOCATION MAP OF I-80 AT US 30
16	LOCATION MAP OF IL 7 (159TH ST): I-355 TO WILL/COOK ROAD
17	LOCATION MAP OF IL 7 (159TH ST): WILL/COOK ROAD TO RAVINIA
18	LOCATION MAP OF IL 47 AT MAIN STREET
19	LOCATION MAP OF IL 47 AT KISHWAUKEE
20	TRAFFIC CONTROL AND PROTECTION SIDE ROADS, INTERSECTION, AND DRIVEWAYS (TC-10)
21	TRAFFIC CONTROL DETAIL FOR FREEWAY SHOULDER CLOSURES AND PARTIAL RAMP CLOSURE (TC-17)

# GENERAL NOTES

- ALL HERBICIDES, WATER, AND MIXIN AGENTS SHALL BE PROVIDED BY THE CONTRACTOR.
- RANDOM SPOT CHECK INSPECTIONS BY THE ENGINEER WILL OCCUR TO VERIFY WEED CONTROL CALIBRATION RATES
- THE CONTRACTOR SHALL NOT START WORK BEFORE A WORK ORDER IS ISSUED FROM THE ENGINEER.
- PERENNIAL PLANTS' SPECIES AND QUANTITIES WILL VARY BASED ON LOCATION, PERFORMANCE, AND 404 WETLAND PERMIT REQUIREMENTS. EXACT QUANTITIES AND VARIETIES OF PLUGS WILL BE PROVIDED ON AN AS-NEEDED BASIS DIRECTED BY THE ENGINEER.
- INTERSEEDING, CLASS 4B(MODIFIED) AND INTERSEEDING, CLASS 5A(MODIFIED) WILL BE MECHANICALLY DRILLED DURING WINTER MONTHS WHEN PLANTING SURFACE IS FROZEN, OR AS DIRECTED BY ENGINEER.
- NO WORK WILL BE ALLOWED DURING ANY LEGAL HOLIDAY.
- ALL LANE AND SHOULDER CLOSURE REQUESTS ON EXPRESSWAYS SHALL BE SUBMITTED TO THE TRAFFIC OPERATIONS ENGINEER 24 HOURS IN ADVANCE OF REQUESTED CLOSURES PRIOR TO WORKING.
- THE CONTRACTOR SHALL TAKE ALL NECESSARY SAFETY PRECAUTIONS TO PROTECT AND PROVIDE ACCESS TO ABUTTING PROPERTY, UTILITIES, PEDESTRIANS, AND VEHICULAR TRAFFIC.
- ALL TRAFFIC SIGNS SHALL HAVE RETROREFLECTIVE SHEETING.
- ALL VEHICLES INCLUDING PASSENGER CARS, WHETHER OWNED BY THE CONTRACTOR OR ANYONE REPRESENTING THEM, SHALL BE EQUIPPED WITH A YELLOW FLASHING LIGHT MOUNTED EITHER ON TOP OR IN THE REAR WINDOW OF THE VEHICLE AND VISIBLE FOR AT LEAST 500 FEET TO THE REAR OF THE VEHICLE. IN ADDITION, A SIGN MUST BE DISPLAYED ON EACH SIDE OF THE VEHICLE AND WITH LETTERS AT LEAST 3 INCHES IN HEIGHT AND WITH A SUITABLE FONT, SHOWING THE COMPANY NAME. MAGNETIC SIGNS ARE ACCEPTABLE.
- THE CONTRACTOR SHALL REQUEST AND GAIN THE APPROVAL FROM THE ILLINOIS DEPARTMENT OF TRANSPORTATION'S EXPRESSWAY TRAFFIC OPERATIONS ENGINEER AT WWW.IDOTILCS.COM TWENTY-FOUR (24) HOURS IN ADVANCE OF ALL DAILY LANE, RAMP AND SHOULDER CLOSURES. THIS ADVANCE NOTIFICATION IS CALCULATED BASED ON WORK WEEK OF MONDAY THROUGH FRIDAY AND SHALL NOT INCLUDE WEEKENDS OR HOLIDAYS.

# HIGHWAY STANDARDS

STANDARD NO.	DESCRIPTION
701001-02	OFF-ROAD OPERATIONS, 2L, 2W, MORE THAN 15' AWAY
701006-05	OFF-ROAD OPERATIONS, 2L, 2W, 15' TO 24" FROM PAVEMENT
701106-02	OFF-ROAD OPERATIONS, MORE THAN 15' AWAY
701201-05	LANE CLOSURE, 2L, 2W, DAY ONLY, FOR SPEEDS ≥ 45 MPH
701301-04	LANE CLOSURE, 2L, 2W, SHORT TIME OPERATIONS
701421-08	LANE CLOSURE, MULTILANE, DAY OPERATION ONLY, FOR SPEEDS ≥ 45 MPH TO 55 MPH
701501-06	URBAN LANE CLOSURE, 2L, 2W, UNDIVIDED
701601-09	URBAN LANE CLOSURE, MULTILANE, 1W OR 2W WITH NON-TRAVERSABLE MEDIAN
701901-08	TRAFFIC CONTROL DEVICES

REV-SEP

MODEL: Default  
 FILE NAME: I:\Projects\177920\Documents\DOT Office\District 11\Projects\177920\CADD\177920-11\Index.dwg  
 PROJECT: 177920-11  
 SHEET: 21 OF 21  
 DATE: 3/30/2021

USF# NAME = dlrosario	DESIGNED -	REVISED -	<b>STATE OF ILLINOIS DEPARTMENT OF TRANSPORTATION</b>	<b>WETLAND AREAS MANAGEMENT INDEX OF SHEETS, HIGHWAY STANDARDS, &amp; GENERAL NOTES</b>		F.A. RTE	SECTION	COUNTY	TOTAL SHEETS	SHEET NO.		
PLOT SCALE = 100.1175' / in	DRAWN -	REVISED -		SCALE:	SHEET	OF	SHEETS	STA.	TO	STA.	ILLINOIS	FED. AID PROJECT
PLOT DATE = 3/30/2021	CHECKED -	REVISED -		VAR	2021-061-LS	VARIOUS	21	2	CONTRACT NO. 62N93			
	DATE -	REVISED -										

SUMMARY OF QUANTITIES			CONSTRUCTION TYPE CODE				
CODE NO	ITEM	UNIT	TOTAL QUANTITIES URBAN	0031 100% STATE			
25000750	MOWING	ACRE	150	150			
25200200	SUPPLEMENTAL WATERING	UNIT	10	10			
K0013000	PERENNIAL PLANTS, PRAIRIE TYPE, 2" DIAMETER BY 4" DEEP PLUG	UNIT	50	50			
K0013030	PERENNIAL PLANTS, WETLAND TYPE, 2" DIAMETER BY 4" DEEP PLUG	UNIT	100	100			
K0029614	WEED CONTROL, AQUATIC	GALLON	150	150			
K0029624	WEED CONTROL, TEASEL	GALLON	150	150			
K1002564	INTERSEEDING (SPECIAL)	ACRE	5	5			
K1003658	MOWING STAKES	EACH	120	120			
X0327120	WEED CONTROL, NATIVE LANDSCAPE ENHANCEMENT	ACRE	75	75			
X2000001	WEED CONTROL, NATIVE LANDSCAPE REMEDIATION	UNIT	300	300			
X2500500	INTERSEEDING, CLASS 4 (SPECIAL)	ACRE	10	10			
X2503100	MOWING	UNIT	15	15			
X2503315	INTERSEEDING, CLASS 4A (MODIFIED)	ACRE	15	15			

SUMMARY OF QUANTITIES			CONSTRUCTION TYPE CODE				
CODE NO	ITEM	UNIT	TOTAL QUANTITIES URBAN	0031 100% STATE			
X2503318	INTERSEEDING, CLASS 4B (MODIFIED)	ACRE	20	20			
X2503321	INTERSEEDING, CLASS 5 (MODIFIED)	ACRE	10	10			
X2503323	INTERSEEDING, CLASS 5A (MODIFIED)	ACRE	5	5			

FILE NAME *	USER NAME * drrasr/ans	DESIGNED -	REVISED -
Plot Scale * 99.9946 ' / in.	Checked -	REVISOR -	DATE -
Plot Date * 3/30/2021	DATE -	REVISOR -	DATE -

**STATE OF ILLINOIS  
DEPARTMENT OF TRANSPORTATION**

**WETLAND AREAS MANAGEMENT  
SUMMARY OF QUANTITIES**

SCALE: SHEET NO. OF SHEETS STA. TO STA.

F.A. RTE.	SECTION	COUNTY	TOTAL SHEETS	SHEET NO.
VAR	2021-061-LS	VARIOUS	21	3
FED. ROAD DIST. NO. 1 ILLINOIS FED. AID PROJECT			CONTRACT NO. 62N93	

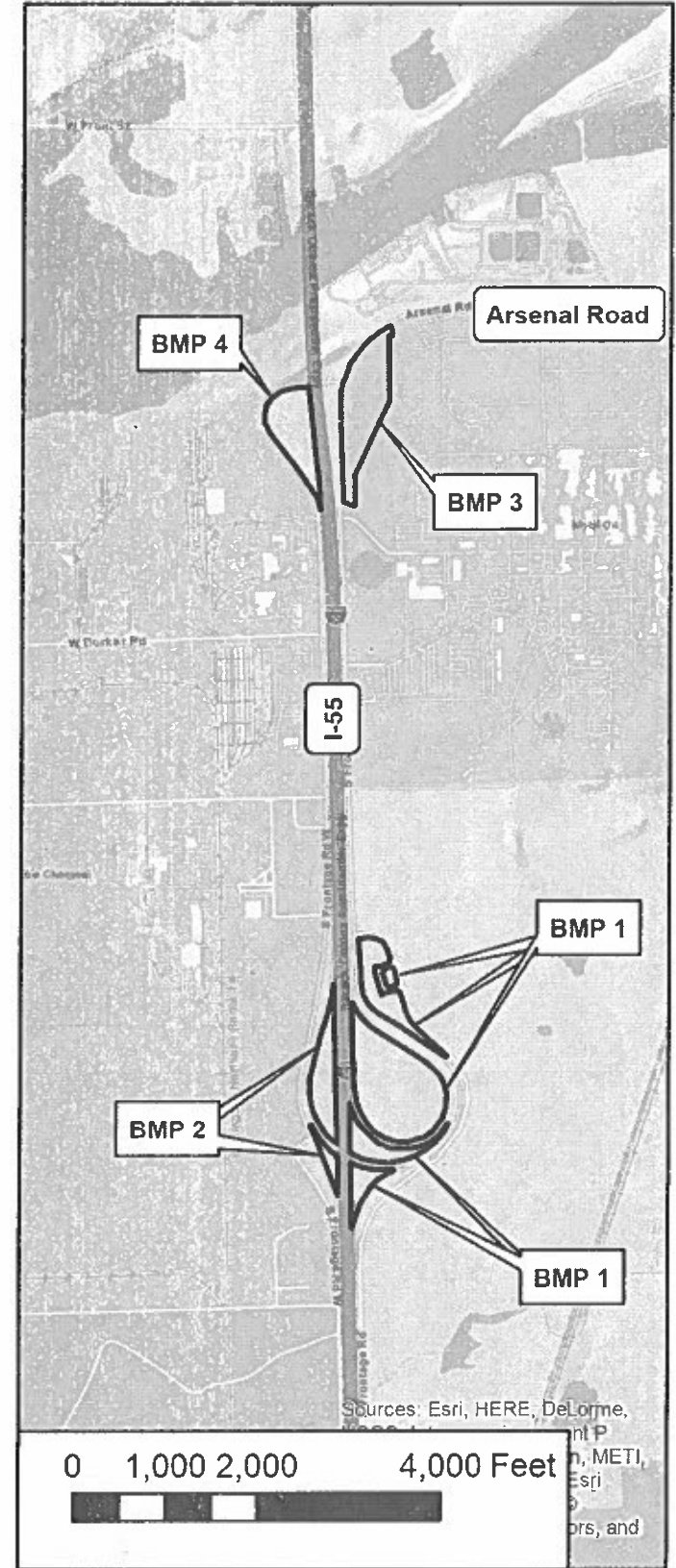
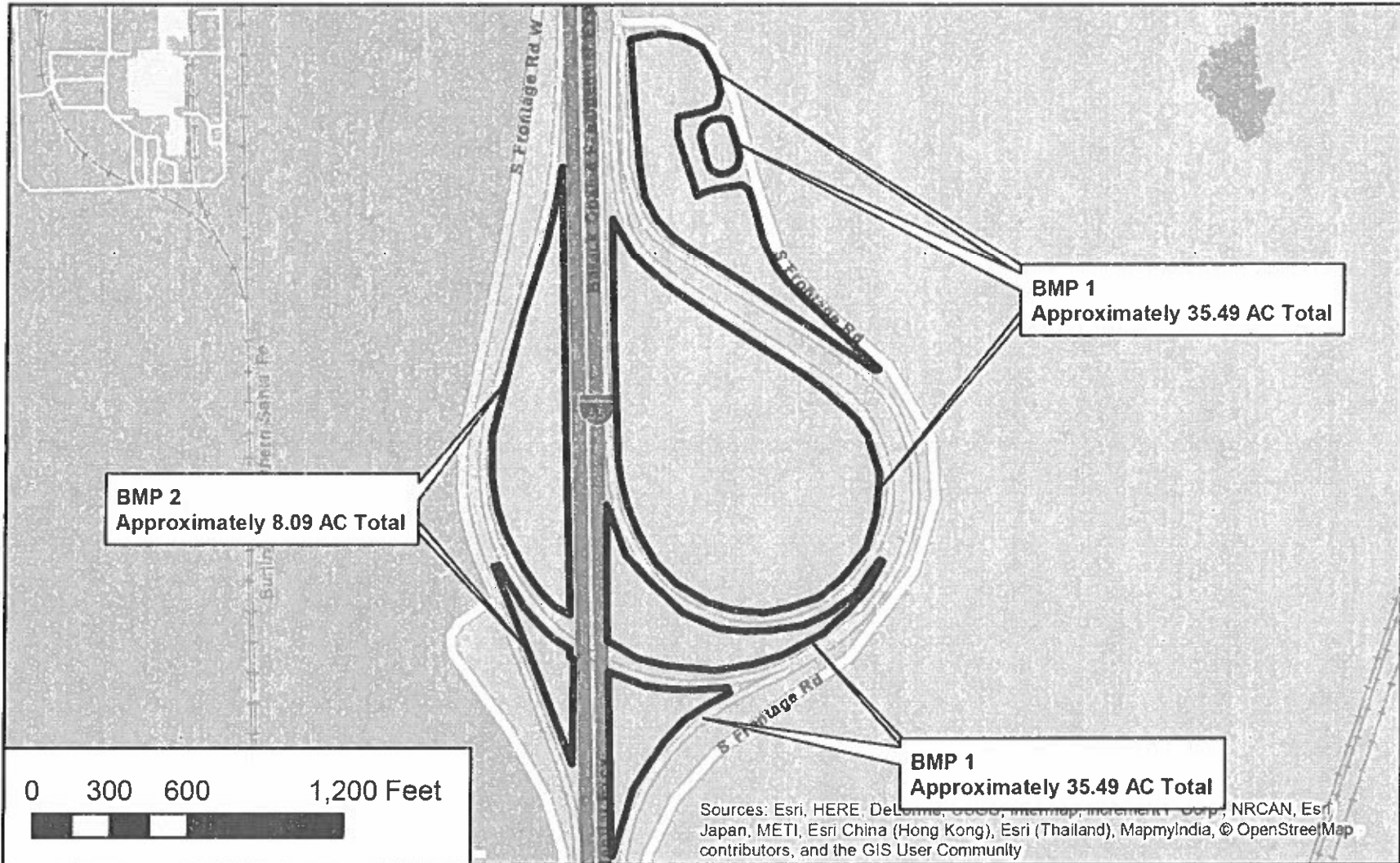
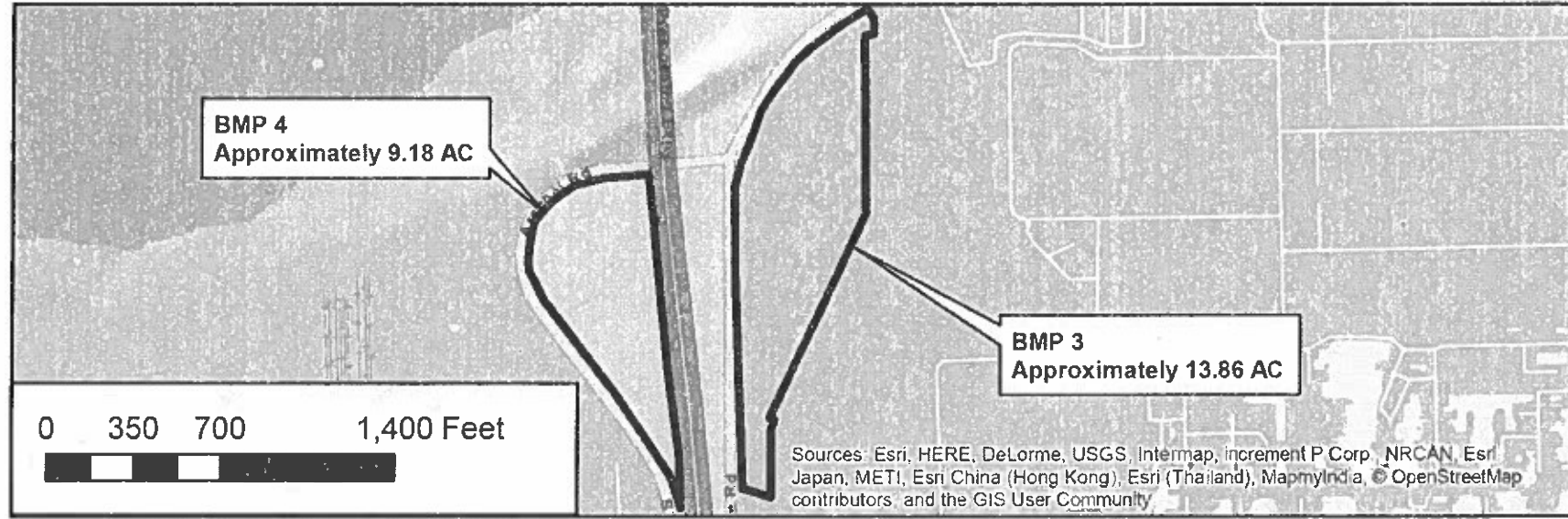
REV-SEP





# GENERAL LOCATION MAP

## I-55 AT ARSENAL ROAD, WILL COUNTY IL



MODEL: D:\data\...  
 FILE NAME: INCURRENT PROJECTS\...  
 CONTRACT: 2021\WAM...

USER NAME = krlsten	DESIGNED -	REVISED -
PLOT SCALE = 2.00 1/16"	DRAWN -	REVISED -
PLOT DATE = 3/30/2021	CHECKED -	REVISED -
	DATE -	REVISED -

**STATE OF ILLINOIS**  
**DEPARTMENT OF TRANSPORTATION**

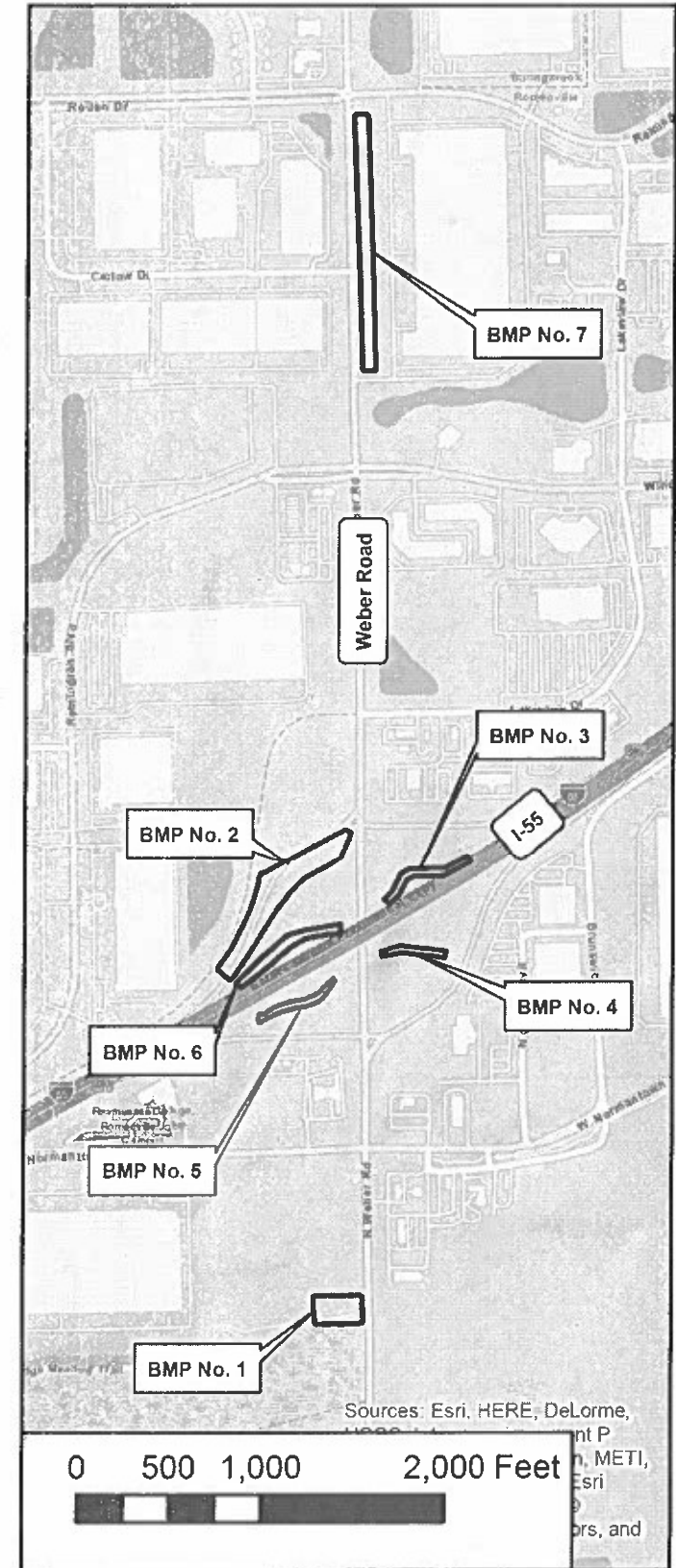
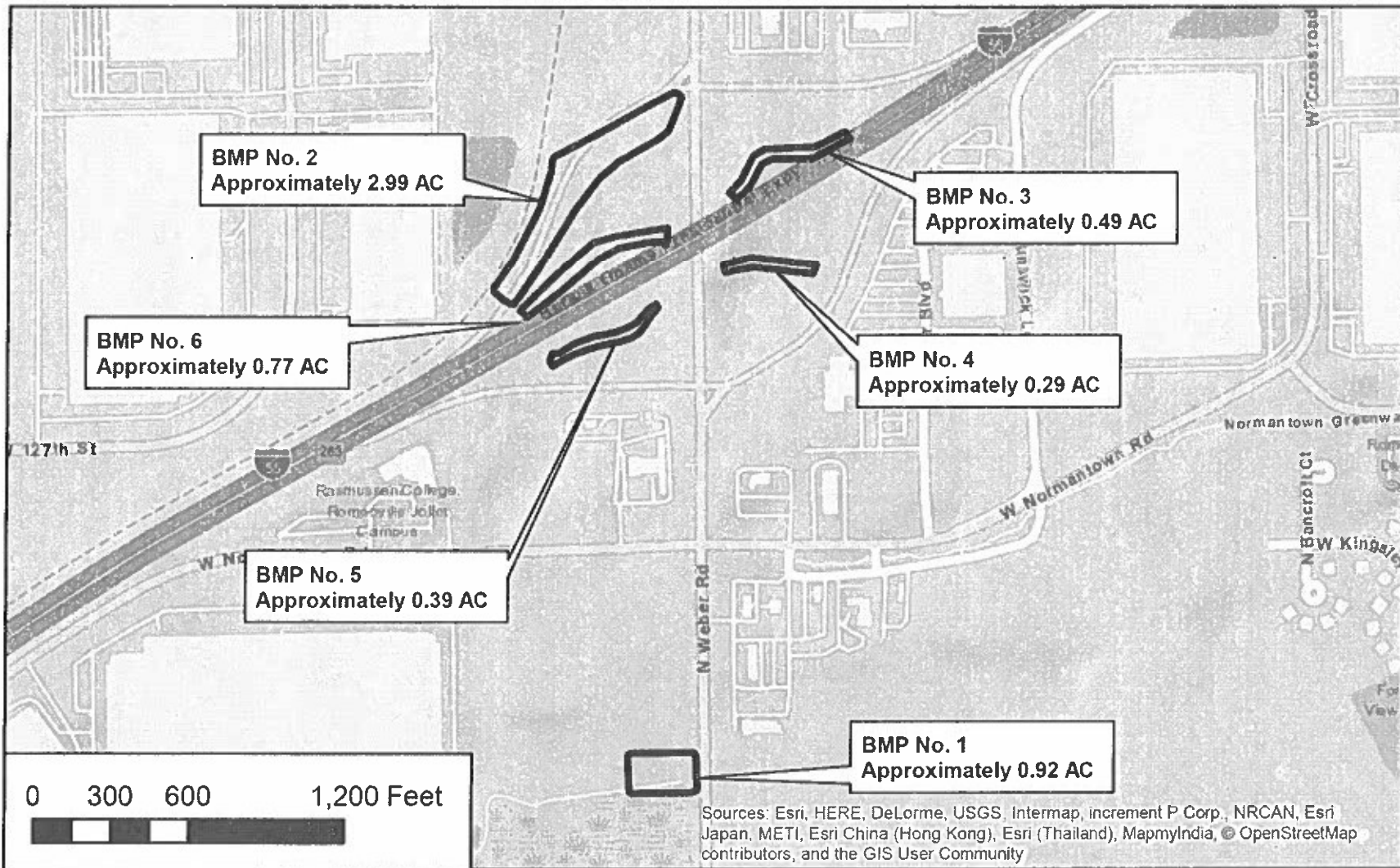
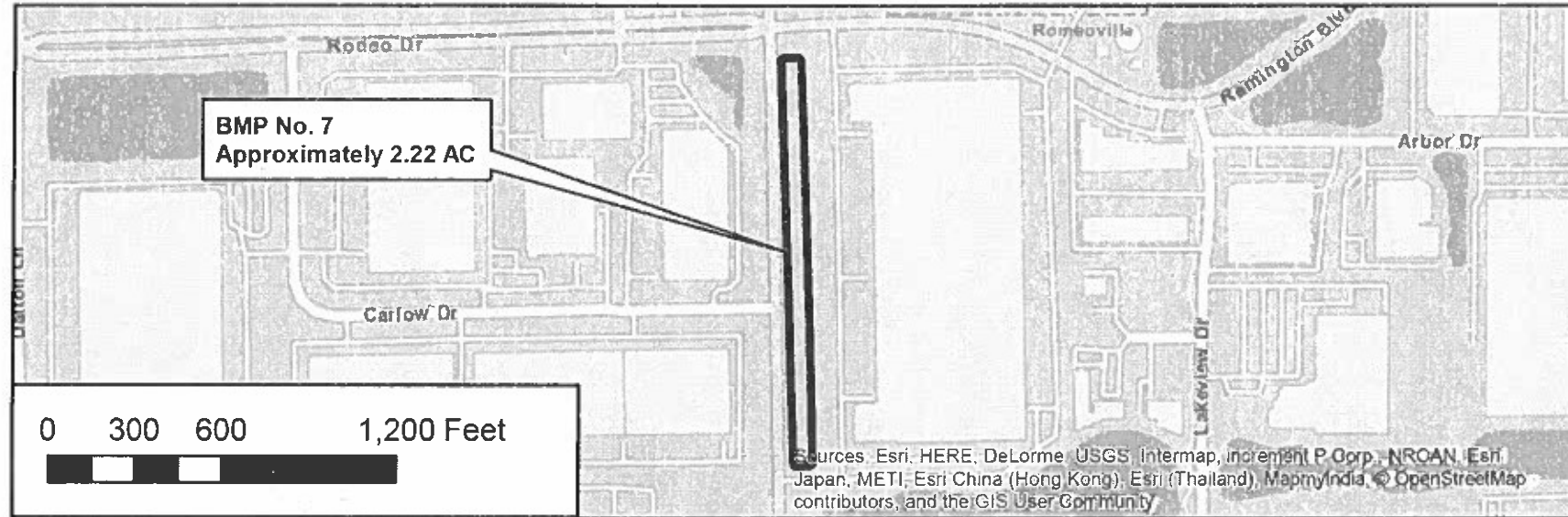
SCALE:	SHEET	OF	SHEETS	STA.	TO STA.
--------	-------	----	--------	------	---------

F.A. RTE	SECTION	COUNTY	TOTAL SHEETS	SHEET NO.
	2021-061-LS	VARIOUS	21	5
ILLINOIS			CONTRACT NO. 62N93	



# GENERAL LOCATION MAP

## I-55 AT WEBER ROAD, WILL COUNTY IL



MODEL: Default  
 FILE NAME: INCURRENT PROJECT\SubArea\1405500 DOT Landscaping Maintenance\GIS Data\WAM\_Contract.dwg  
 2021/11/24 11:58 AM

USER NAME	= Intolen	DESIGNED	-	REVISED	-
		DRAWN	-	REVISED	-
PLOT SCALE	= 2.00" = 1 mi	CHECKED	-	REVISED	-
PLOT DATE	= 3/30/2021	DATE	-	REVISED	-

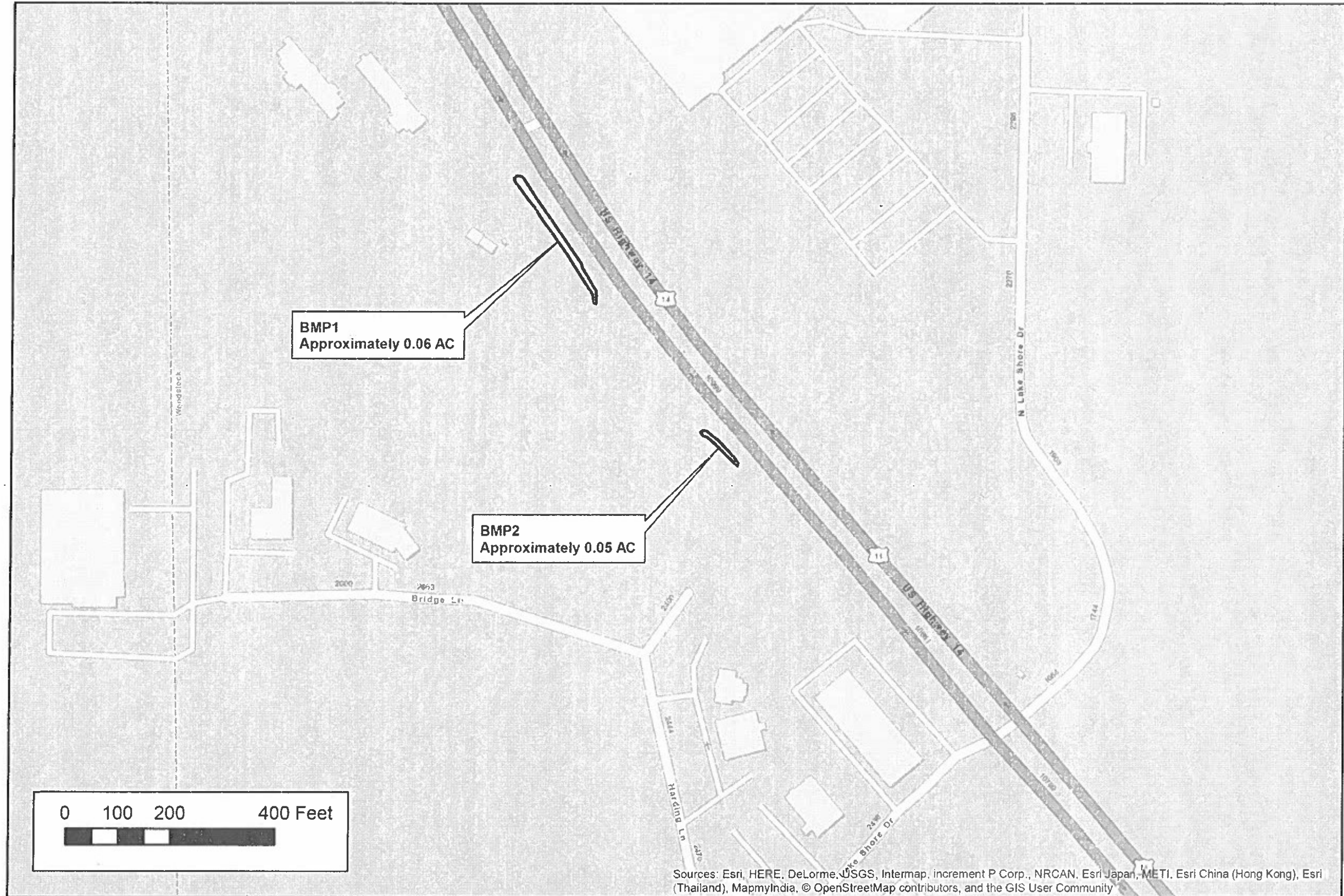
**STATE OF ILLINOIS  
DEPARTMENT OF TRANSPORTATION**

SCALE:	SHEET	OF	SHEETS	STA.	TO	STA.
--------	-------	----	--------	------	----	------

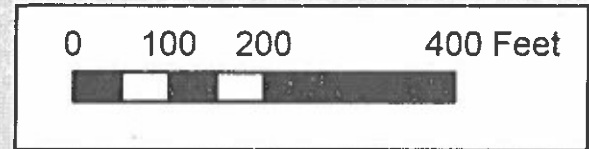
F.A. RTE.	SECTION	COUNTY	TOTAL SHEETS	SHEET NO.
	2021-061-LS	VARIOUS	21	6
ILLINOIS			CONTRACT NO. 62N93	

# GENERAL LOCATION MAP

US 14 LUCAS ROAD TO W LAKE SHORE DRIVE, MCHENRY COUNTY IL



MODEL: Default  
 FILE NAME: INCURRENT PROJECTS\Subarea\1420000 DOT Location Maintenance\GIS Data\WAM\_Contract\_2021\WAM\_Contract.gpr



Sources: Esri, HERE, DeLorme, USGS, Intermap, increment P Corp., NRCAN, Esri Japan, METI, Esri China (Hong Kong), Esri (Thailand), MapmyIndia, © OpenStreetMap contributors, and the GIS User Community

USER NAME	• brkkan	DESIGNED	-	REVISED	-
DRAWN	-	REVISIONS	-	REVISED	-
PLOT SCALE	• 2.00 /in.	CHECKED	-	REVISED	-
PLOT DATE	• 3/30/2021	DATE	-	REVISED	-

**STATE OF ILLINOIS  
DEPARTMENT OF TRANSPORTATION**

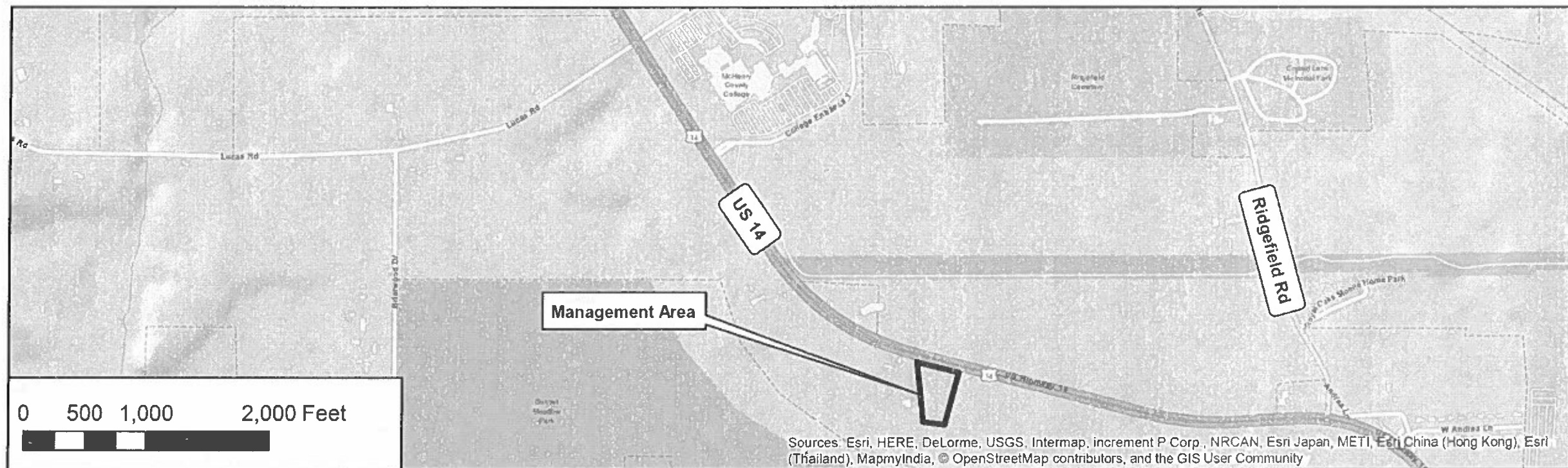
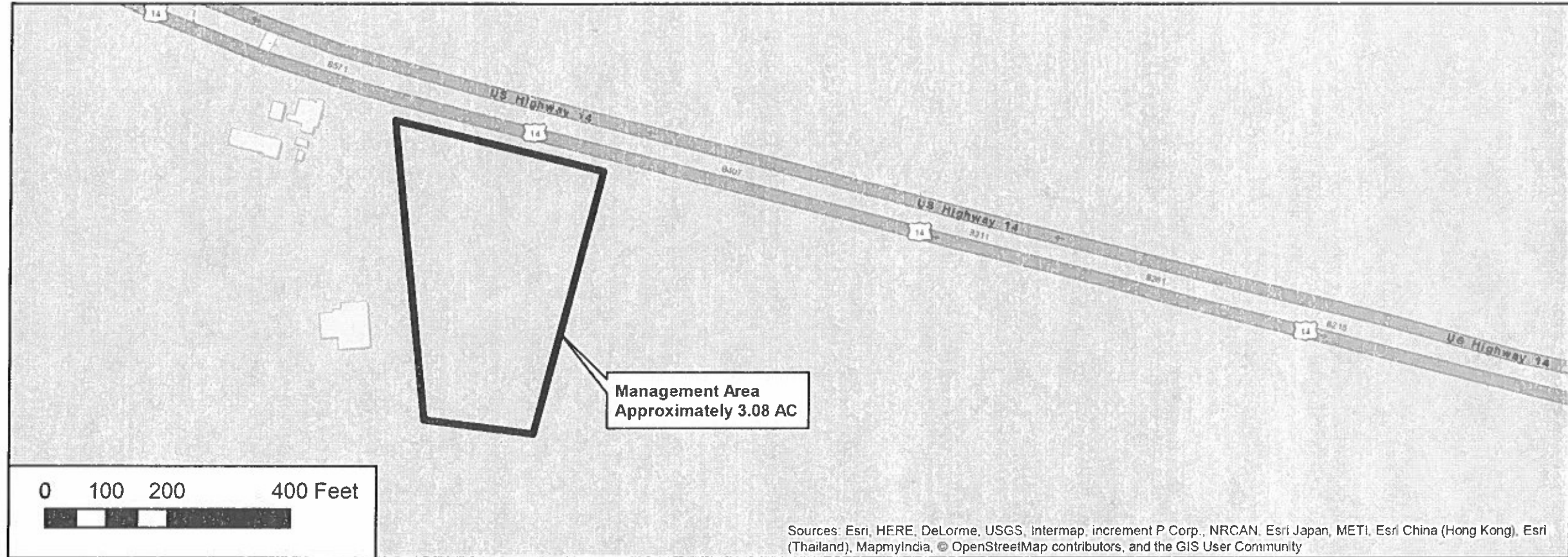
SCALE:	SHEET	OF	SHEETS	STA.	TO STA.
--------	-------	----	--------	------	---------

F.A. RTE.	SECTION	COUNTY	TOTAL SHEETS	SHEET NO.
	2021-061-LS	VARIOUS	21	7
ILLINOIS			CONTRACT NO. 62N93	



# GENERAL LOCATION MAP

US 14 LUCAS ROAD TO CRYSTAL LAKE AVENUE, MCHENRY COUNTY IL



MODEL: D:\user\...  
 FILE NAME: ...

USER NAME	= Inelson	DESIGNED	-	REVISED	-
DRAWN	-	REVISIONS	-	REVISIONS	-
PLOT SCALE	= 2.00 / in.	CHECKED	-	REVISIONS	-
PLOT DATE	= 3/30/2021	DATE	-	REVISIONS	-

**STATE OF ILLINOIS  
DEPARTMENT OF TRANSPORTATION**

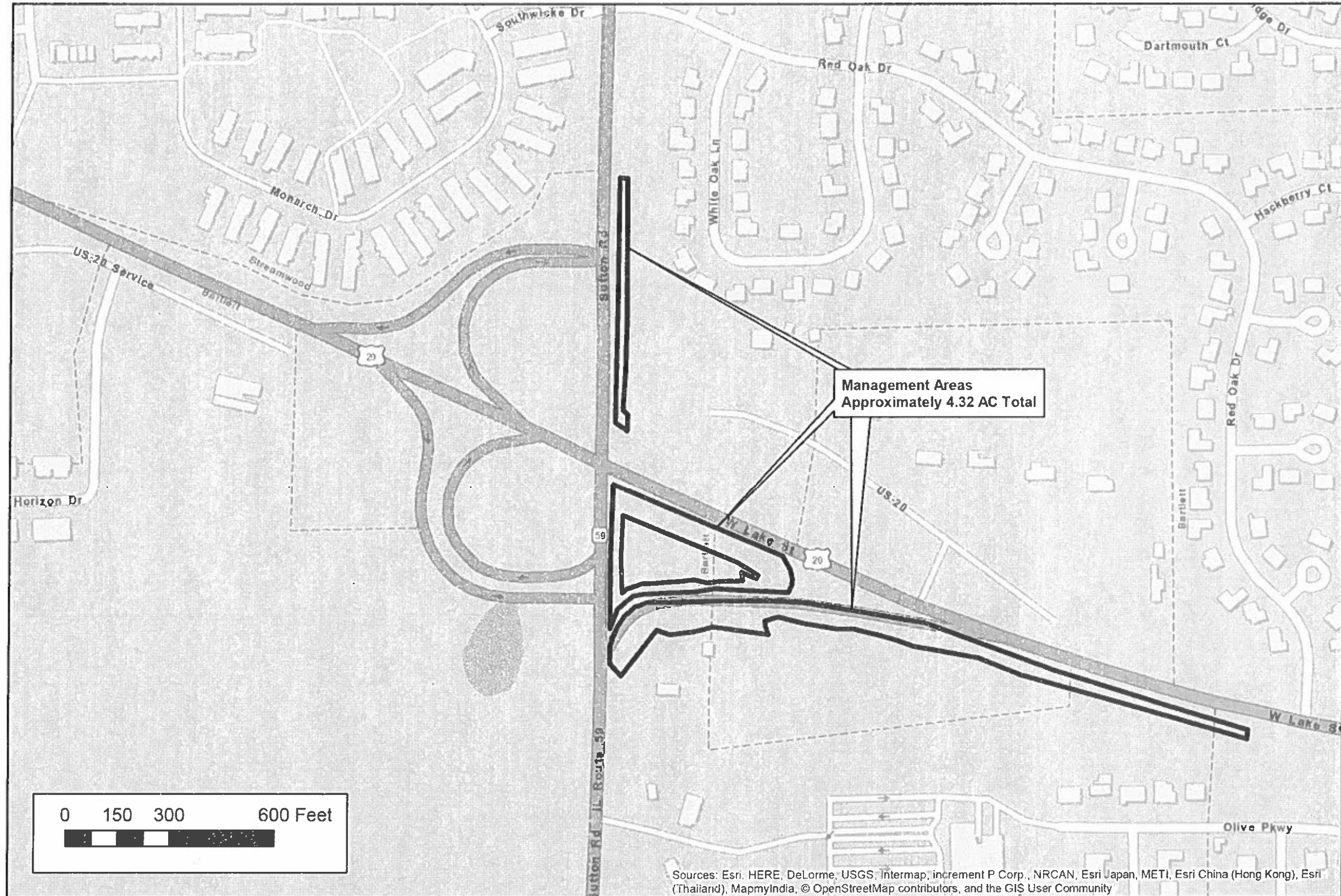
SCALE:	SHEET	OF	SHEETS	STA.	TO STA.
--------	-------	----	--------	------	---------

F.A. RTE.	SECTION	COUNTY	TOTAL SHEETS	SHEET NO.
	2021-061-LS	VARIOUS	21	8
ILLINOIS			CONTRACT NO. 62N93	



# GENERAL LOCATION MAP

## US 20 AT IL 59, COOK COUNTY IL



Sources: Esri, HERE, DeLorme, USGS, Intermap, increment P Corp., NRCAN, Esri Japan, METI, Esri China (Hong Kong), Esri (Thailand), MapmyIndia, © OpenStreetMap contributors, and the GIS User Community

MODEL: Default  
 FILE NAME: I:\CURRENT PROJECTS\A951405300 DOT Landscapes Maintenance\GIS Data\WAM\_Colored\_2021\WAM\_Connect.gpx

USER NAME = Intlsn	DESIGNED -	REVISED -
PLOT SCALE = 2.00 1/In	DRAWN -	REVISED -
PLOT DATE = 3/30/2021	CHECKED -	REVISED -
	DATE -	REVISED -

**STATE OF ILLINOIS**  
**DEPARTMENT OF TRANSPORTATION**

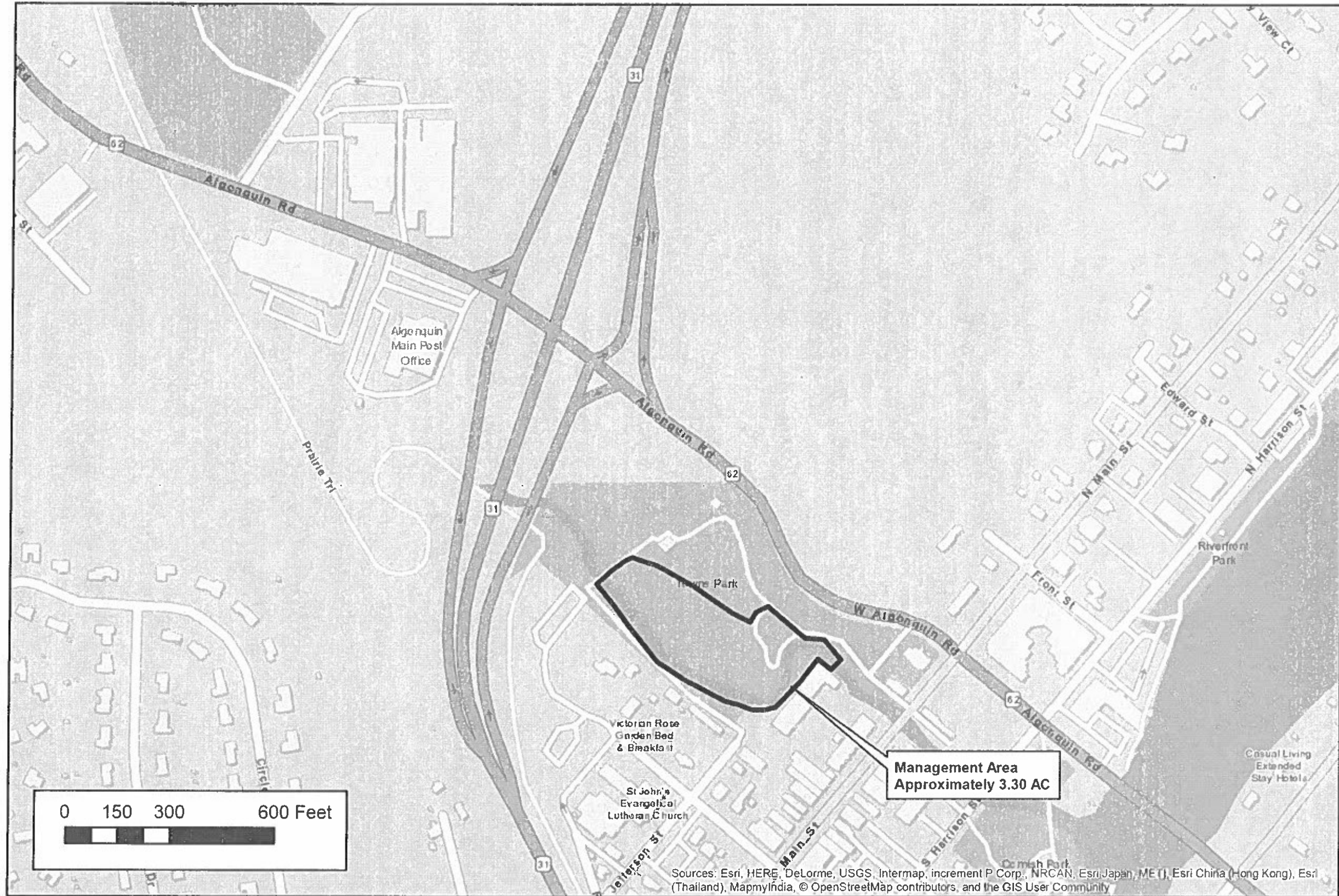
SCALE:	SHEET	OF	SHEETS	STA.	TO	STA.
--------	-------	----	--------	------	----	------

F.A. RTE.	SECTION	COUNTY	TOTAL SHEETS	SHEET NO.
	2021-061-LS	VARIOUS	21	9
ILLINOIS			CONTRACT NO. 62N93	



# GENERAL LOCATION MAP

## ROUTE 31 (CRYSTAL CREEK), MCHENRY COUNTY IL



MODEL: Default  
 FILE NAME: N:\CURRENT PROJECTS\GIS\1605000 DOT Landscaping\MapArea\GIS Data\WAM\_Contract\_2021\WAM\_Contract.apr

USER NAME = Irleton	DESIGNED -	REVISED -
	DRAWN -	REVISED -
PLOT SCALE = 2.00" = 1 ft.	CHECKED -	REVISED -
PLOT DATE = 3/30/2021	DATE -	REVISED -

**STATE OF ILLINOIS  
DEPARTMENT OF TRANSPORTATION**

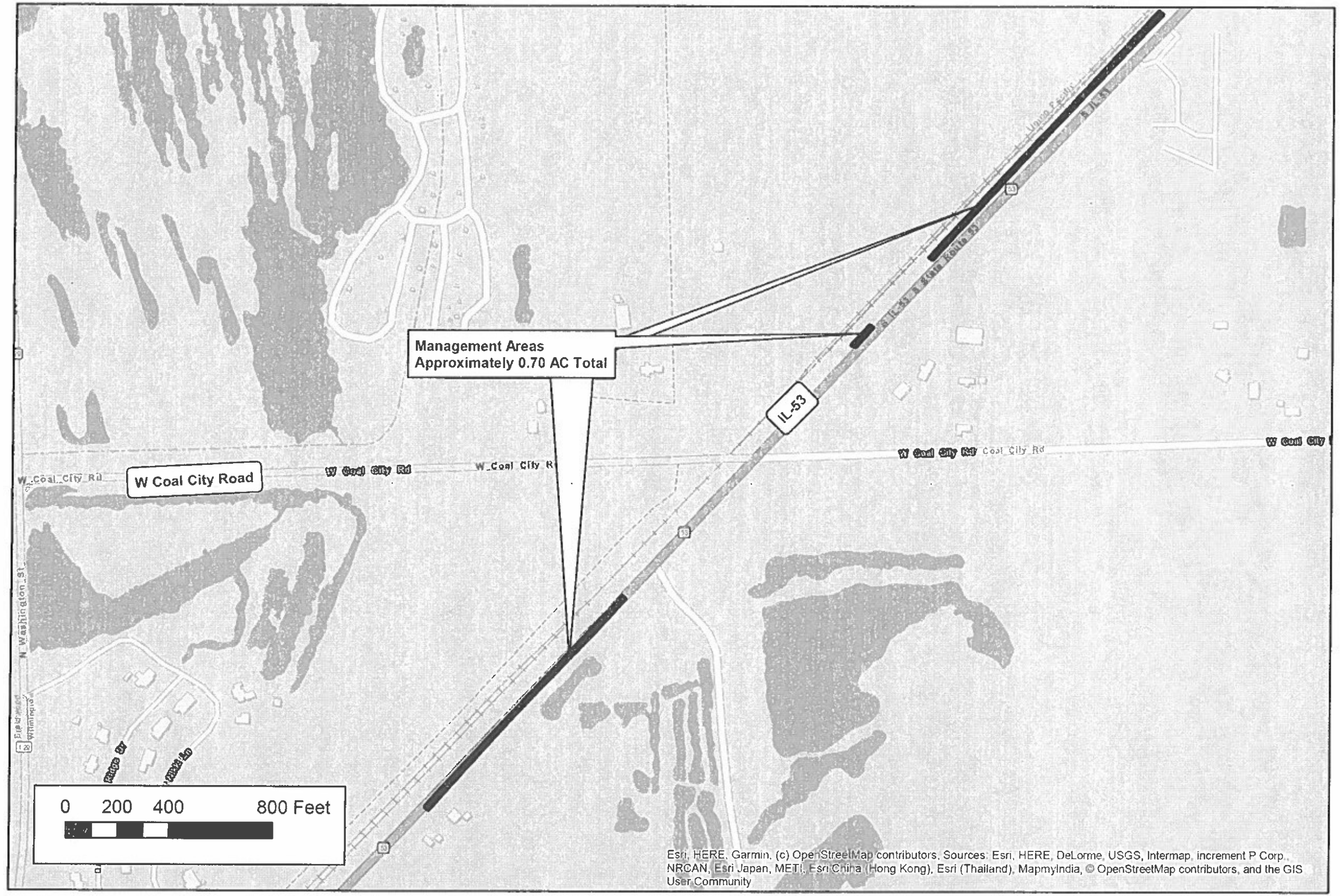
SCALE: SHEET OF SHEETS STA. TO STA.

F.A. RTE.	SECTION	COUNTY	TOTAL SHEETS	SHEET NO.
	2021-061-LS	VARIOUS	21	10
ILLINOIS			CONTRACT NO. 62N93	



# GENERAL LOCATION MAP

## UPRR AT COAL CITY ROAD, WILL COUNTY IL



Esri, HERE, Garmin, (c) OpenStreetMap contributors, Sources: Esri, HERE, DeLorme, USGS, Intermap, increment P Corp., NRCAN, Esri Japan, METI, Esri China (Hong Kong), Esri (Thailand), MapmyIndia, © OpenStreetMap contributors, and the GIS User Community

MOREL, Delinea  
 FILE NAME: INCURRANT PROJECT\BATCH\1405000 BOT Landscape Maintenance\GIS Daily\WAM\_Contract\_2021\WAM\_Contract.dgn

USER NAME = b-hobson	DESIGNED -	REVISED -
	DRAWN -	REVISED -
PLOT SCALE = 2.00 1/4"	CHECKED -	REVISED -
PLOT DATE = 3/30/2021	DATE -	REVISED -

**STATE OF ILLINOIS  
DEPARTMENT OF TRANSPORTATION**

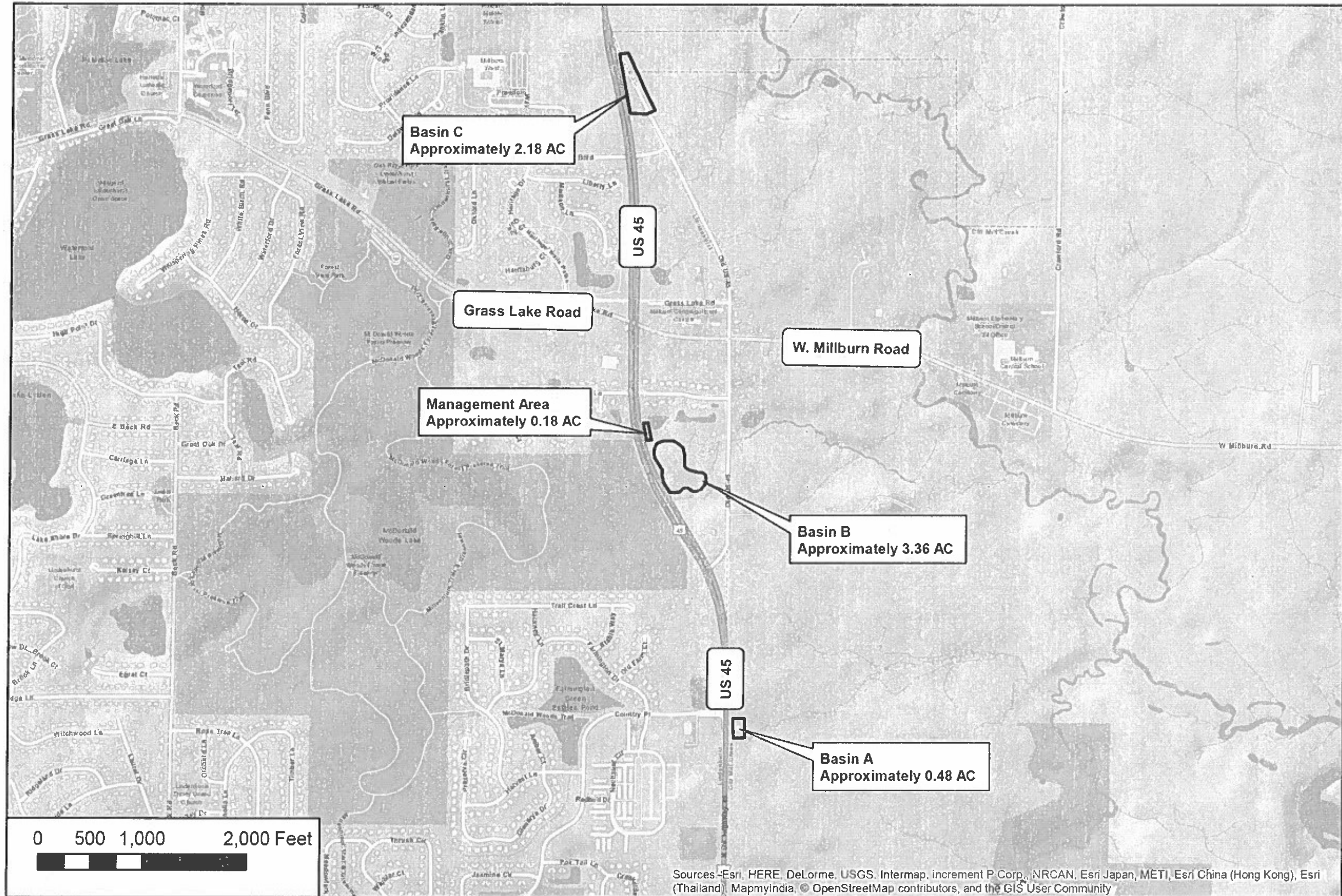
SCALE:	SHEET	OF	SHEETS	STA.	TO STA.
--------	-------	----	--------	------	---------

F.A. RTE.	SECTION	COUNTY	TOTAL SHEETS	SHEET NO.
	2021-061-LS	VARIOUS	21	11
ILLINOIS				
CONTRACT NO. 62N93				

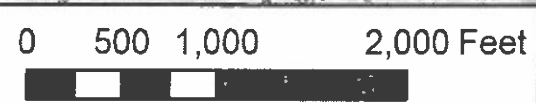


# GENERAL LOCATION MAP

## US 45 AT MILBURN BYPASS, LAKE COUNTY IL



MODEL: Default  
 FILE NAME: I:\CURRENT PROJECTS\1425007\DOT\LakeCounty\MapInfo\GIS\MapInfo\1425007\1425007\_11\1425007\_11.dwg  
 DATE: 3/30/2021



Sources - Esri, HERE, DeLorme, USGS, Intermap, increment P Corp., NRCAN, Esri Japan, METI, Esri China (Hong Kong), Esri (Thailand), MapmyIndia, © OpenStreetMap contributors, and the GIS User Community

USER NAME =	blatton
PLOT SCALE =	2.00' / 1" =
PLOT DATE =	3/30/2021

DESIGNED -	REVISED -
DRAWN -	REVISED -
CHECKED -	REVISED -
DATE -	REVISED -

**STATE OF ILLINOIS**  
**DEPARTMENT OF TRANSPORTATION**

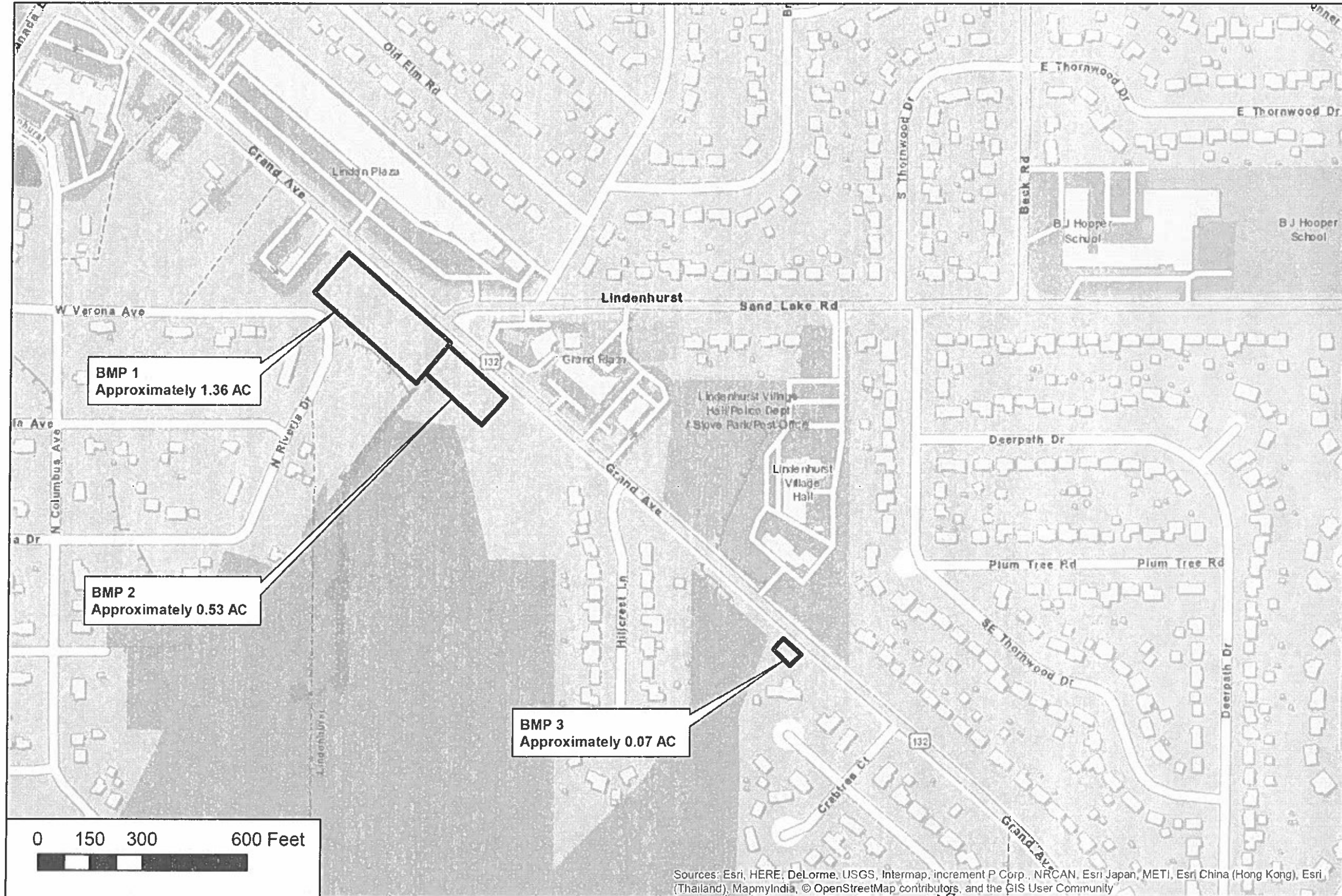
SCALE:	SHEET	OF	SHEETS	STA.	TO STA.
--------	-------	----	--------	------	---------

F.A. RTE.	SECTION	COUNTY	TOTAL SHEETS	SHEET NO.
	2021-061-LS	VARIOUS	21	12
ILLINOIS			CONTRACT NO. 62N93	



# GENERAL LOCATION MAP

## IL132 MUNN TO SAND LAKE, LAKE COUNTY, IL



Sources: Esri, HERE, DeLorme, USGS, Intermap, increment P Corp., NRCAN, Esri Japan, METI, Esri China (Hong Kong), Esri (Thailand), MapmyIndia, © OpenStreetMap contributors, and the GIS User Community

MODEL: Detail  
 FILE NAME: INCLURENT PROJECTS\advel1405080 DOT LandUse Maintenance\GIS Data\WAM\_Contract\_2021\WAM\_Contract.dwg

USER NAME = Inlisen	DESIGNED -	REVISED -
	DRAWN -	REVISED -
PLOT SCALE = 2.00 in.	CHECKED -	REVISED -
PLOT DATE = 3/30/2021	DATE -	REVISED -

**STATE OF ILLINOIS  
DEPARTMENT OF TRANSPORTATION**

SCALE:	SHEET	OF	SHEETS	STA.	TO STA.
--------	-------	----	--------	------	---------

F.A. RTE	SECTION	COUNTY	TOTAL SHEETS	SHEET NO.
	2021-061-LS	VARIOUS	21	13
ILLINOIS			CONTRACT NO. 62N93	





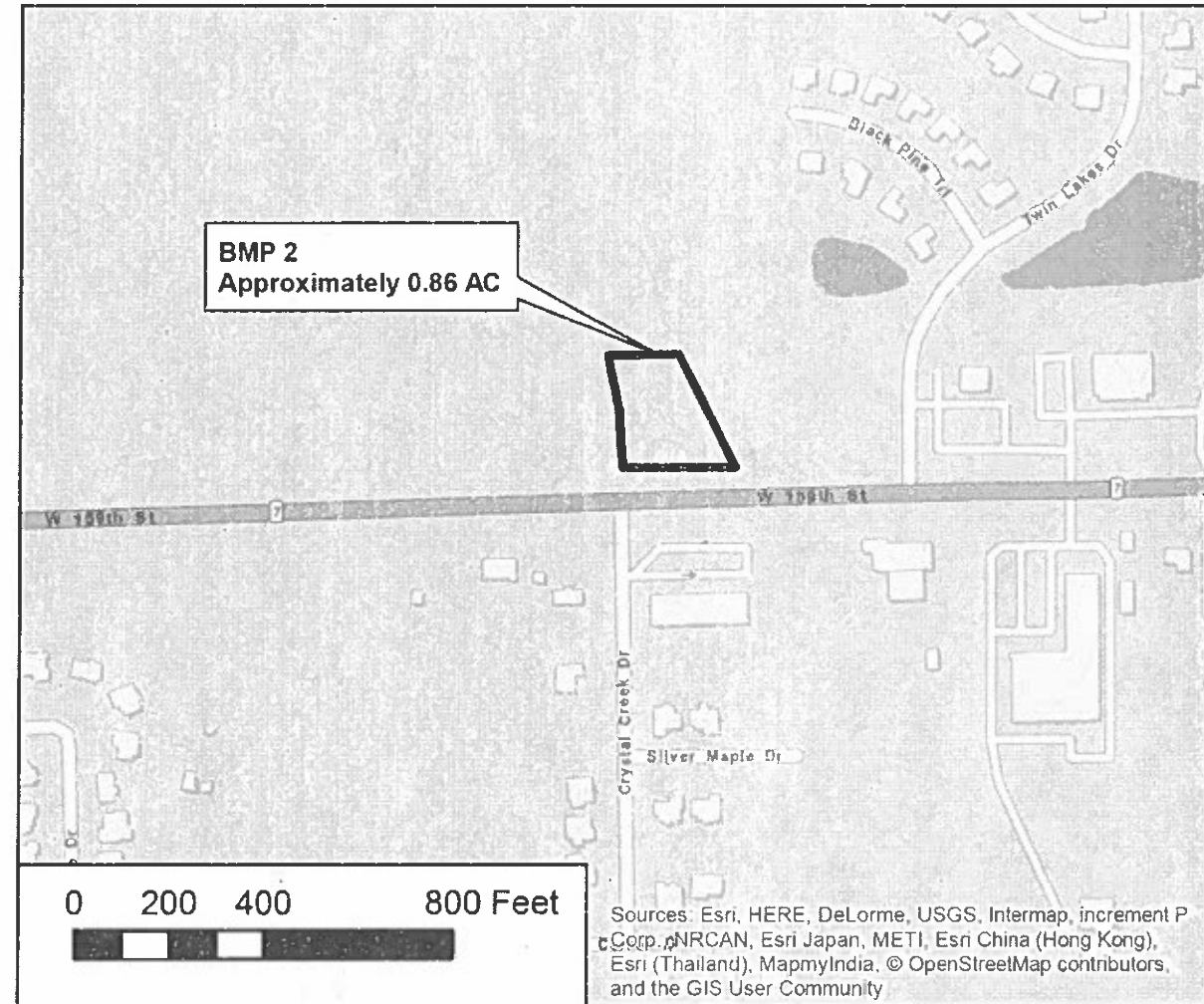
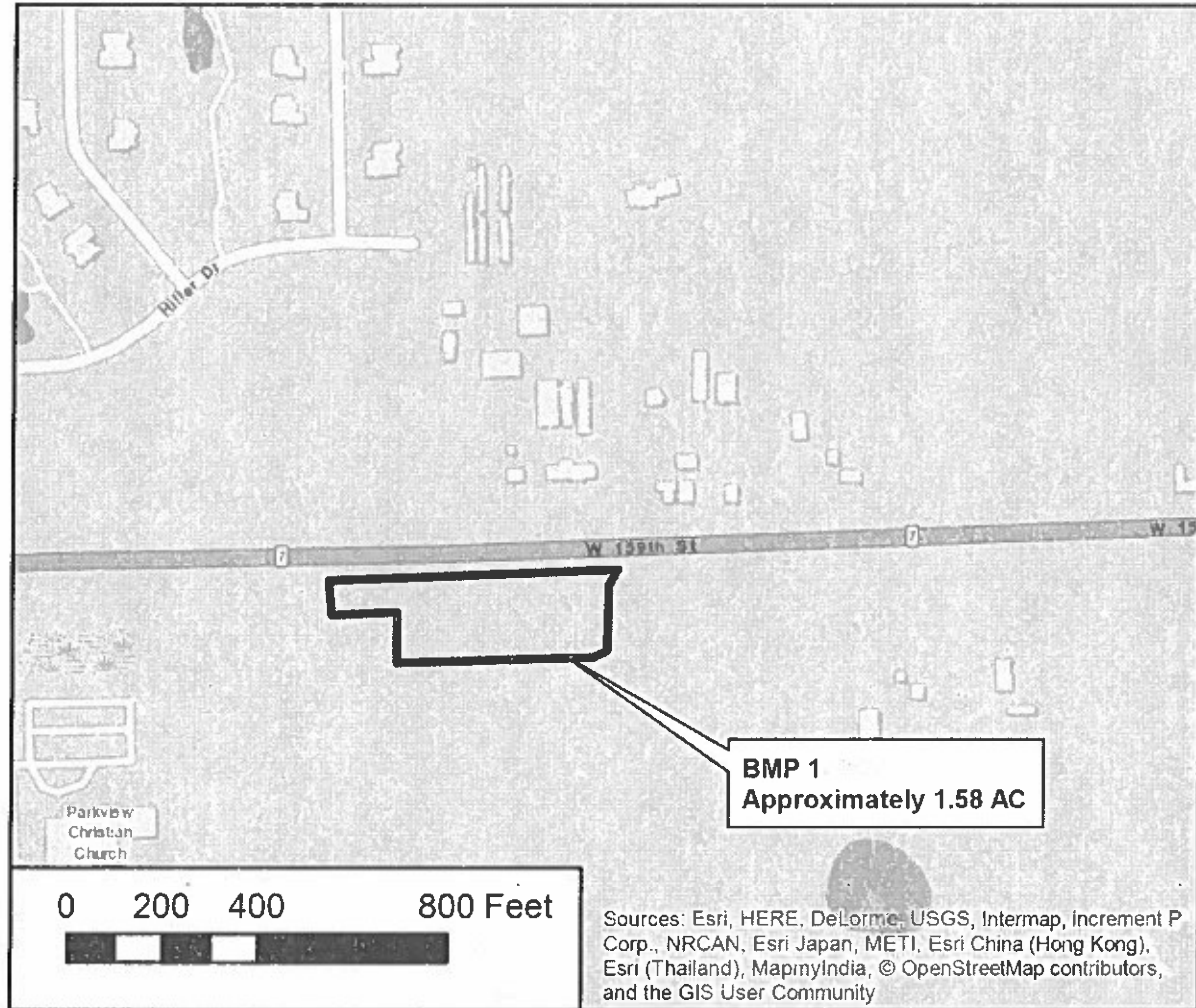






# GENERAL LOCATION MAP

IL 7 (159TH STREET) I-355 TO WILL/COOK ROAD, WILL COUNTY IL



MODEL: Detail  
FILE NAME: INCURRENT PROJECTS\2021\1605000.DOT LineItems\Main\GIS Data\WAM\_Contract\_2021\WAM\_Contract.dgn

USER NAME = <b>brlston</b>	DESIGNED -	REVISED -
PLOT SCALE = 2.00 1/4"	DRAWN -	REVISED -
PLOT DATE = 3/30/2021	CHECKED -	REVISED -
	DATE -	REVISED -

**STATE OF ILLINOIS  
DEPARTMENT OF TRANSPORTATION**

SCALE:	SHEET	OF	SHEETS	STA.	TO STA.
--------	-------	----	--------	------	---------

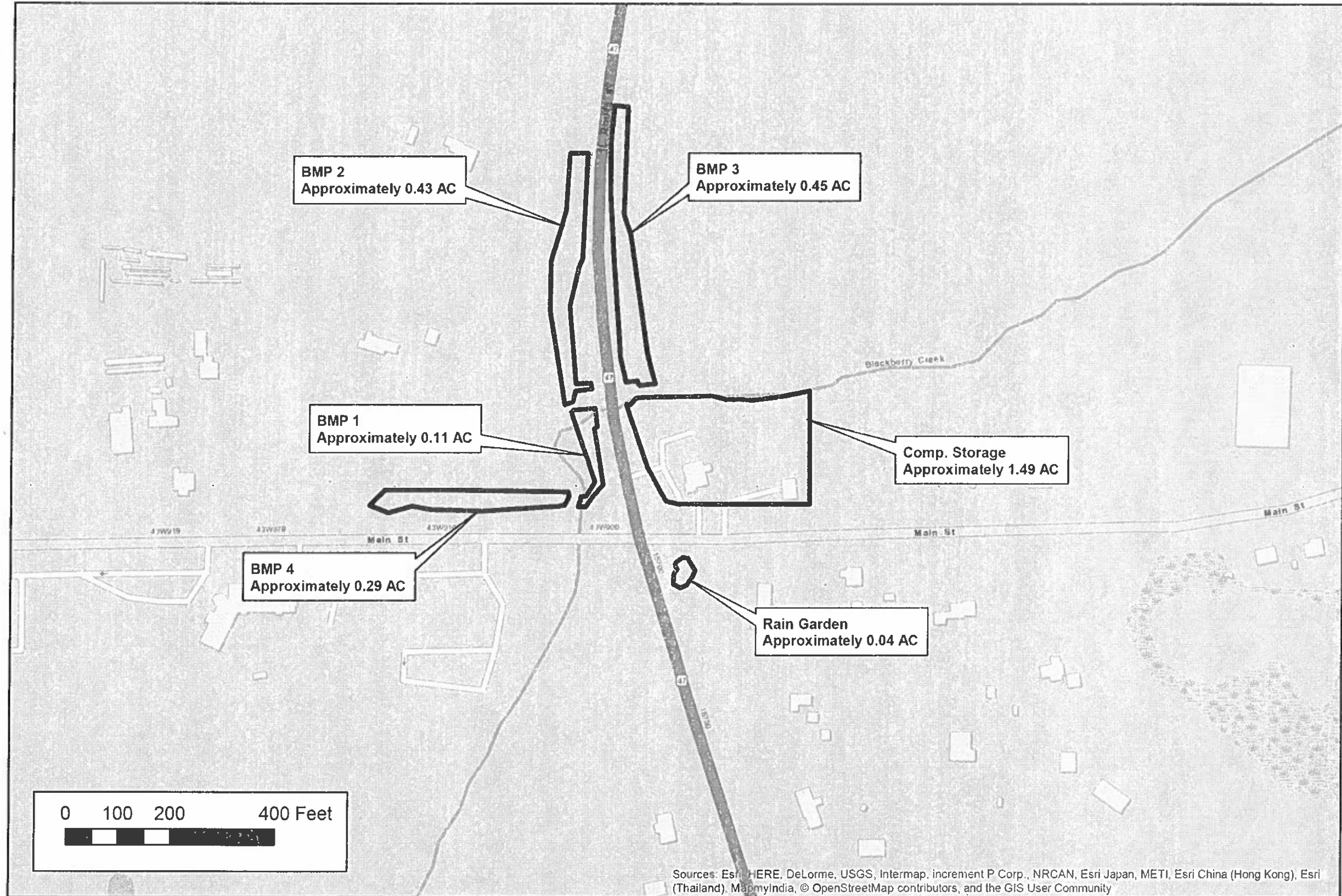
F.A. RTE	SECTION	COUNTY	TOTAL SHEETS	SHEET NO.
	2021-061-LS	VARIOUS	21	16
ILLINOIS			CONTRACT NO. 62N93	





# GENERAL LOCATION MAP

## IL 47 AT MAIN STREET, KANE COUNTY IL



Sources: Esri, HERE, DeLorme, USGS, Intermap, increment P Corp., NRCAN, Esri Japan, METI, Esri China (Hong Kong), Esri (Thailand), MapmyIndia, © OpenStreetMap contributors, and the GIS User Community

MODEL: Default  
 FILE NAME: INCURRRENT PROJECTS\Adrian\405000\DOT Landscapes\MainSt\GIS Data\WAM\_Contract\_2021\WAM\_Contract.dwg

USER NAME = jbratton	DESIGNED -	REVISED -
	DRAWN -	REVISED -
PLOT SCALE = 2.00 / in.	CHECKED -	REVISED -
PLOT DATE = 3/30/2021	DATE -	REVISED -

**STATE OF ILLINOIS  
DEPARTMENT OF TRANSPORTATION**

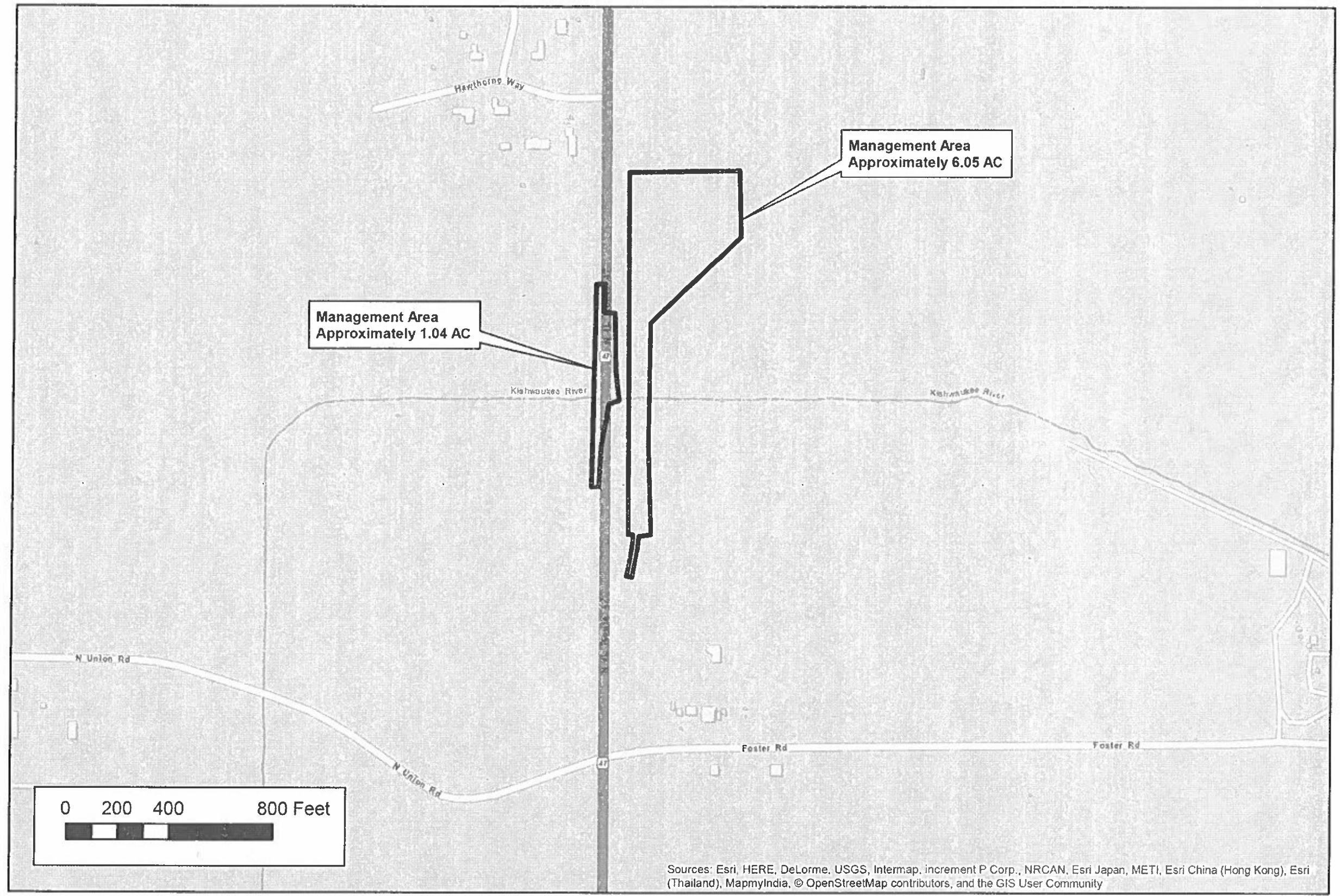
SCALE:	SHEET	OF	SHEETS	STA.	TO STA.
--------	-------	----	--------	------	---------

F.A. RTE.	SECTION	COUNTY	TOTAL SHEETS	SHEET NO.
	2021-061-LS	VARIOUS	21	16
CONTRACT NO. 62N93			ILLINOIS	



# GENERAL LOCATION MAP

## IL 47 AT KISHWAUKEE, MCHENRY COUNTY IL



Sources: Esri, HERE, DeLorme, USGS, Intermap, increment P Corp., NRCAN, Esri Japan, METI, Esri China (Hong Kong), Esri (Thailand), MapmyIndia, © OpenStreetMap contributors, and the GIS User Community

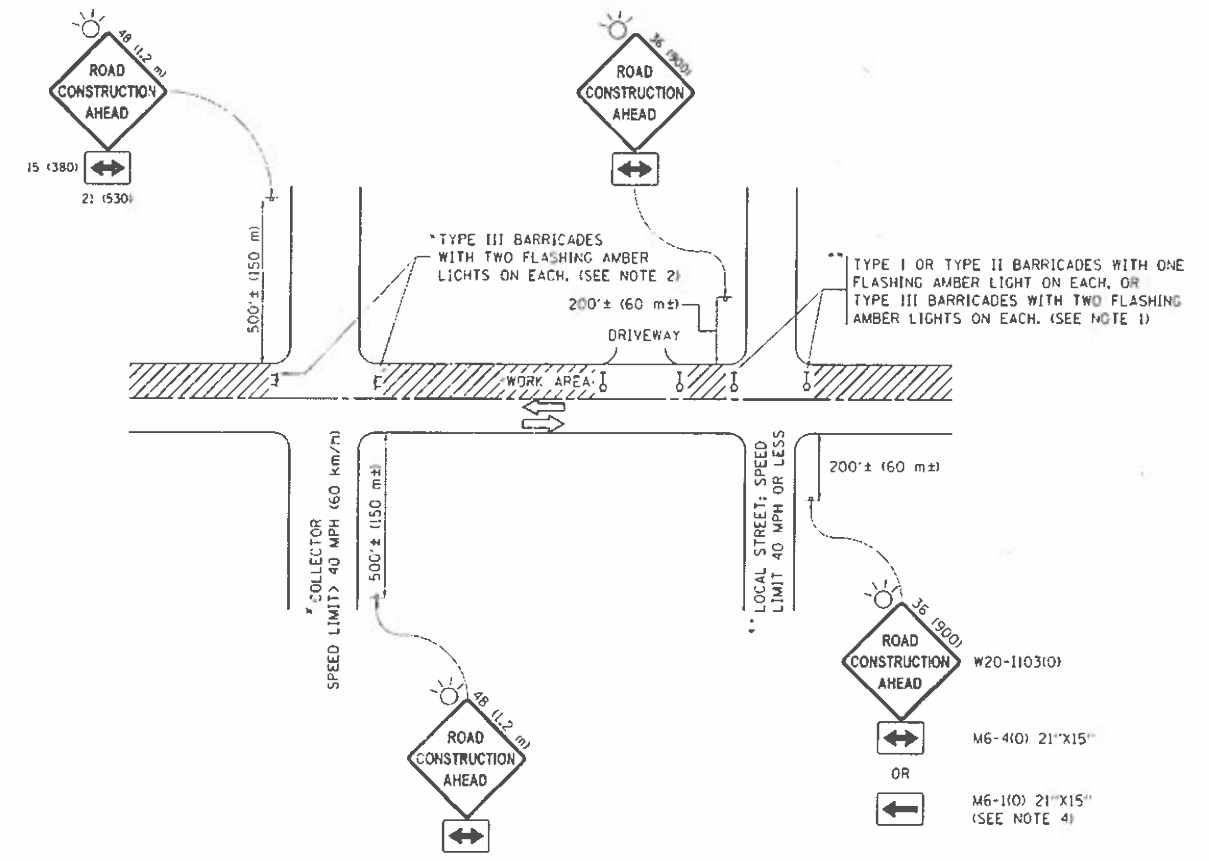
MODEL: D:\delmar\PROJECTS\MapInfo\1405000 DOT Landmarks\MapInfo\GIS Data\WAM\_Contract\_2021\WAM\_Contract.dgn

USER NAME	• Delmar	DESIGNED	-	REVISED	-
PLOT SCALE	• 2.00" = 1/4"	DRAWN	-	REVISED	-
PLOT DATE	• 3/08/2021	CHECKED	-	REVISED	-
		DATE	-	REVISED	-

**STATE OF ILLINOIS  
DEPARTMENT OF TRANSPORTATION**

SCALE:	SHEET	OF	SHEETS	STA.	TO STA.
--------	-------	----	--------	------	---------

F.A. RTE.	SECTION	COUNTY	TOTAL SHEETS	SHEET NO.
	2021-061-LS	VARIOUS	21	19
ILLINOIS			CONTRACT NO. 62N93	



**NOTES:**

1. SIDE ROAD WITH A SPEED LIMIT OF 40 MPH (60 km/h) OR LESS AS SHOWN ON THE DRAWING AND AS DIRECTED BY THE ENGINEER:
  - a) ONE "ROAD CONSTRUCTION AHEAD" SIGN 36 x 36 (900x900) WITH A FLASHER MOUNTED ON IT APPROXIMATELY 200' (60 m) IN ADVANCE OF THE MAIN ROUTE.
  - b) THE CLOSED PORTION OF THE MAIN ROUTE SHALL BE PROTECTED BY BLOCKING WITH TYPE I, TYPE II OR TYPE III BARRICADES, 1/3 OF THE CROSS SECTION OF THE CLOSED PORTION.
2. SIDE ROAD WITH A SPEED LIMIT GREATER THAN 40 MPH (60 km/h) AS SHOWN ON THE DRAWING AND AS DIRECTED BY THE ENGINEER:
  - a) ONE "ROAD CONSTRUCTION AHEAD" SIGN 48 x 48 (1.2 m x 1.2 m) WITH A FLASHER MOUNTED ON IT APPROXIMATELY 500' (150 m) IN ADVANCE OF THE MAIN ROUTE.
  - b) THE CLOSED PORTION OF THE MAIN ROUTE SHALL BE PROTECTED BY BLOCKING WITH TYPE III BARRICADES, 1/2 OF THE CROSS SECTION OF THE CLOSED PORTION.
3. CONES MAY BE SUBSTITUTED FOR BARRICADES OR DRUMS AT HALF THE SPACING DURING DAY OPERATIONS. CONES SHALL BE A MINIMUM OF 28 (710) IN HEIGHT.
4. WHEN THE SIDE ROAD LIES BETWEEN THE BEGINNING OF THE MAINLINE SIGNING AND THE WORK ZONE, A SINGLE HEADED ARROW (M6-1) SHALL BE USED IN LIEU OF THE DOUBLE HEADED ARROW (M6-4).
5. WHEN WORK IS BEING PERFORMED ON A SIDE ROAD OR DRIVEWAY, FOLLOW THE APPLICABLE STANDARD(S). THE DIRECTIONAL ARROW (M6-1 OR M6-4) SHALL BE COVERED OR REMOVED WHEN NO LONGER CONSISTENT WITH THE TRAFFIC CONTROL SET-UP.
6. ADVANCE WARNING SIGNS ARE TO BE OMITTED ON DRIVEWAYS UNLESS OTHERWISE SPECIFIED IN THE PLANS OR BY THE ENGINEER.
7. THE TRAFFIC CONTROL AND PROTECTION FOR SIDE ROADS, INTERSECTIONS, AND DRIVEWAYS SHALL BE INCLUDED IN THE COST OF SPECIFIED TRAFFIC CONTROL STANDARDS OR ITEMS.

All dimensions are in inches (millimeters) unless otherwise shown.

MODEL: Default  
 FILE NAME: C:\Users\user\Documents\Projects\11\Projects\1101\Drawings\1101DOT\_Graphic\1101DOT\_CADD\1101DOT\_CADD\1101DOT\_CADD.dwg

USER NAME = delrosarios	DESIGNED -	REVISED -
PLOT SCALE = 99 9835 ' / m	DRAWN -	REVISED -
PLOT DATE = 3/30/2021	CHECKED -	REVISED -
	DATE -	REVISED -

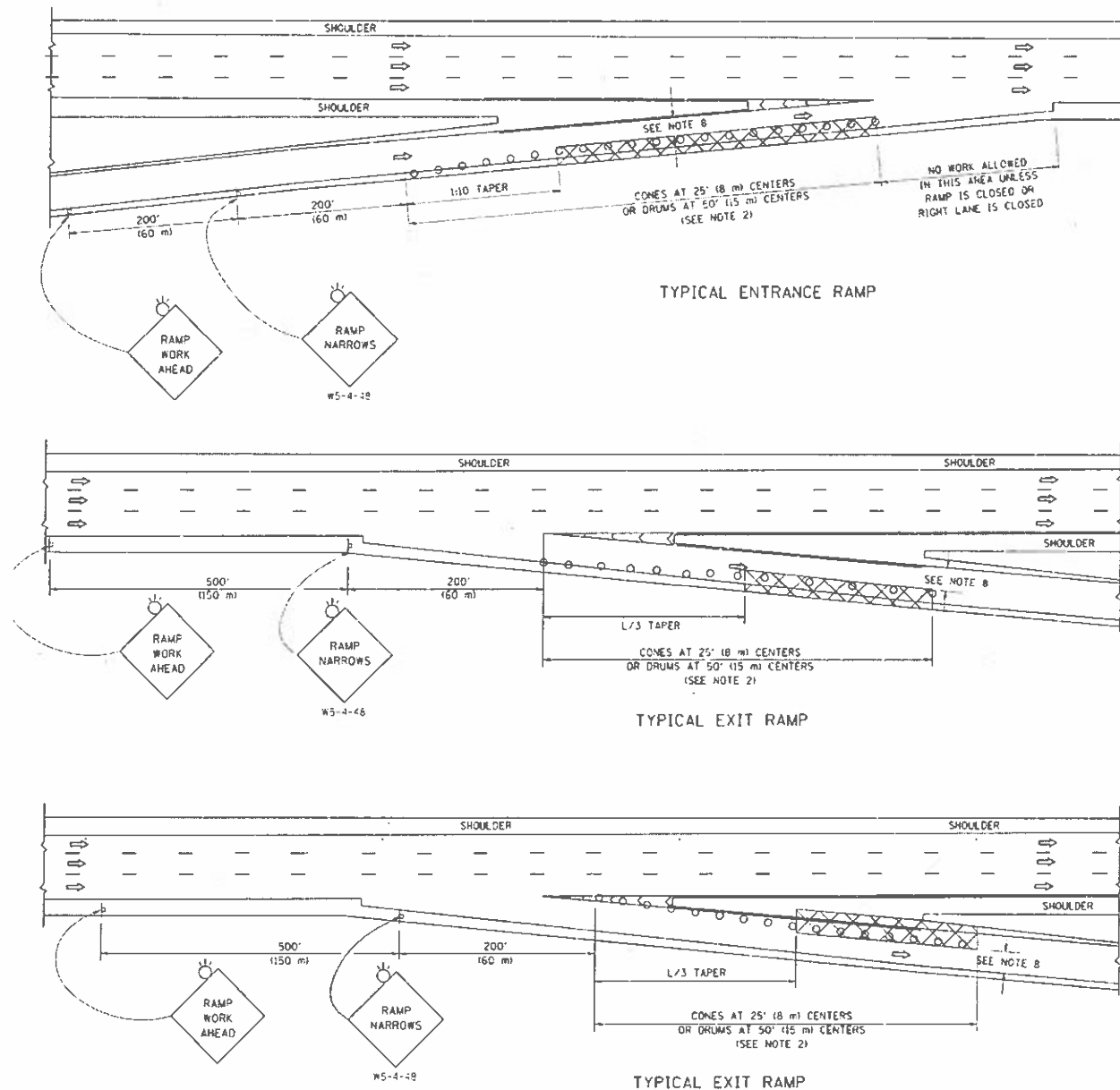
**STATE OF ILLINOIS  
DEPARTMENT OF TRANSPORTATION**

**TRAFFIC CONTROL AND PROTECTION FOR SIDE  
ROADS, INTERSECTIONS, AND DRIVEWAYS (TC-10)**

F.A. RTE	SECTION	COUNTY	TOTAL SHEETS	SHEET NO.
VAR	2021-061-L5	VARIOUS	21	20
CONTRACT NO. 62N93			ILLINOIS FED. AID PROJECT	

SCALE SHEET OF SHEETS STA. TO STA.

PARTIAL RAMP CLOSURE DETAILS



SYMBOLS

- ACTIVE WORK AREA
- SIGN ON PORTABLE OR PERMANENT SUPPORT
- FLAGGER WITH CONTROL SIGN
- TYPE II BARRICADE OR DRUM
- CONE, DRUM OR BARRICADE
- IMPACT ATTENUATOR OF TYPE AND TEST LEVEL SPECIFIED

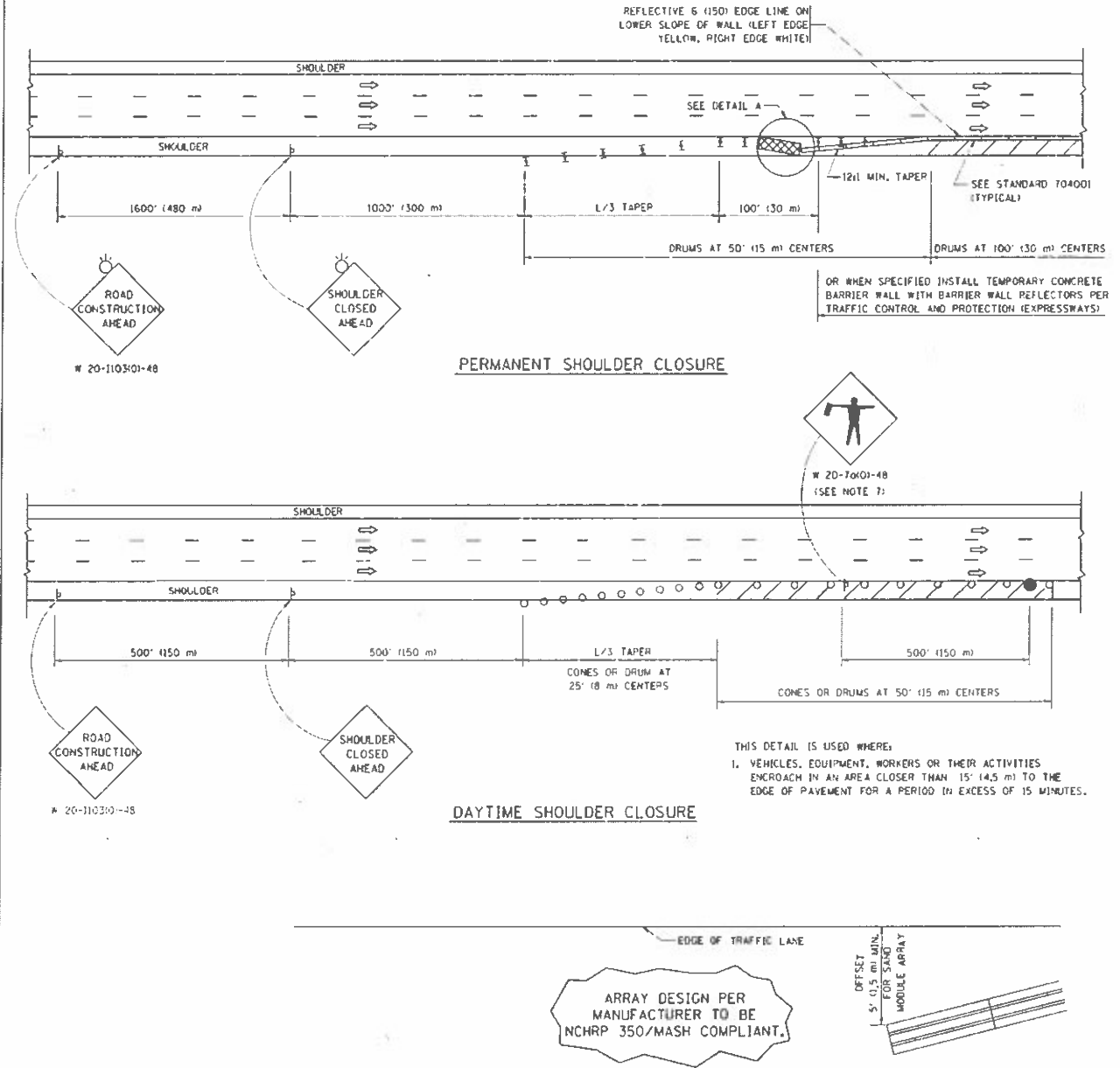
GENERAL NOTES

1. THE "L" DISTANCE EQUALS:
 

SPEED LIMIT	FORMULAS
45 mph (80 km/h) OR GREATER:	METRIC    ENGLISH
	$L = 0.65(W/S)$ $L = (W/S)$

W = WIDTH OF OFFSET IN FEET (METERS)  
S = NORMAL POSTED SPEED MPH (KM/H)
2. TYPE II BARRICADES OR DRUMS ARE REQUIRED FOR ALL NIGHTTIME CLOSURES. TYPE II BARRICADES OR DRUMS WITH MONODIRECTIONAL STEADY BURN LIGHTS ARE REQUIRED FOR DELINEATING OBSTACLES, EXCAVATIONS, OR HAZARDS EXCEEDING 100 FT (30m) IN LENGTH AT NIGHT.
3. ALL SIGNS SHALL BE POST MOUNTED IF THE CLOSURE TIME EXCEEDS FOUR DAYS.
4. FLASHING LIGHTS SHALL BE USED DURING THE HOURS OF DARKNESS AND SHALL BE INSTALLED ABOVE THE FIRST TWO SETS OF SIGNS.

SHOULDER CLOSURE DETAILS



ARRAY DESIGN PER MANUFACTURER TO BE NCHRP 350/MASH COMPLIANT.

DETAIL "A"  
IMPACT ATTENUATOR, TEMPORARY  
(SEE NOTE 5)

ALL DIMENSIONS ARE IN INCHES (MILLIMETERS) UNLESS OTHERWISE SHOWN.

MODEL: C:\p4\work\11111111.dwg; PLOT: 11/11/2021 10:00:00 AM; PLOT SCALE: 1/8" = 1'-0"; PLOT DATE: 11/11/2021 10:00:00 AM

USER NAME = detrosanoms	DESIGNED -	REVISED -
PLOT SCALE = 99.9704' / in.	DRAWN -	REVISED -
PLOT DATE = 3/30/2021	CHECKED -	REVISED -
	DATE -	REVISED -

STATE OF ILLINOIS  
DEPARTMENT OF TRANSPORTATION

TRAFFIC CONTROL DETAIL FOR FREEWAY SHOULDER  
CLOSURES AND PARTIAL RAMP CLOSURE (TC-17)

SCALE: SHEET OF SHEETS STA. TO STA.

SECTION	COUNTY	TOTAL SHEETS	SHEET NO.
2021-061-LS	VARIOUS	21	21
CONTRACT NO. 62N93		ILLINOIS FED AID PROJECT	