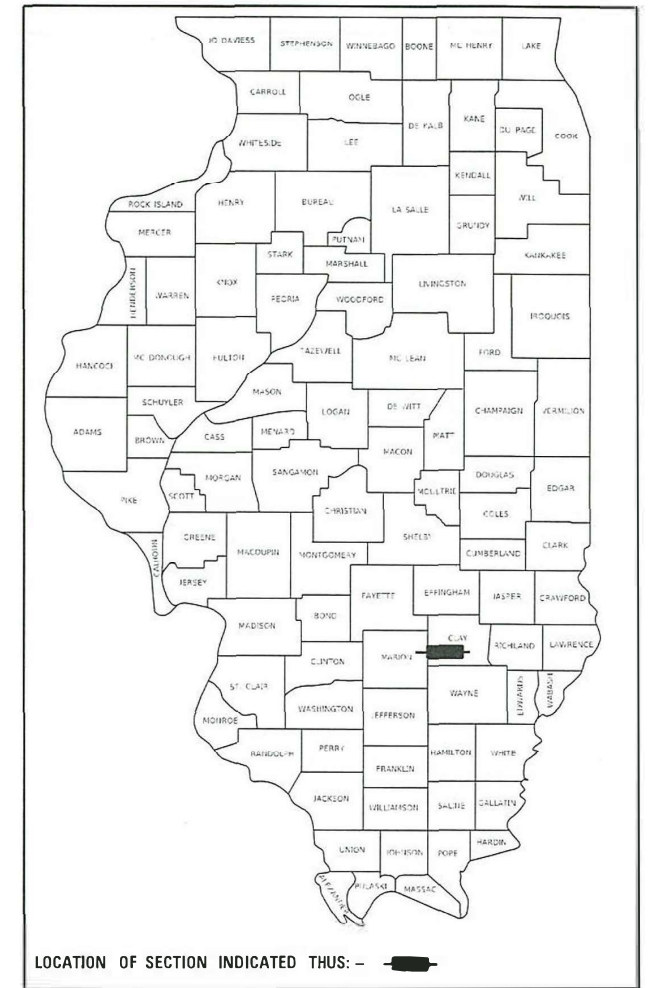


STATE OF ILLINOIS
DEPARTMENT OF TRANSPORTATION

F.A.S. RTE.	SECTION	COUNTY	TOTAL SHEETS	SHEET NO.
2703	9RS-2	CLAY	15	1
		ILLINOIS	CONTRACT NO. 74942	

D-97-018-20



PROPOSED HIGHWAY PLANS

F.A.S. ROUTE 2703 (KINMUNDY ROAD)
SECTION 9RS-2
PROJECT STP-L1HH(019)
RESURFACING (3P)
CLAY COUNTY

C-97-018-20

FOR INDEX OF SHEETS, SEE SHEET NO. 2

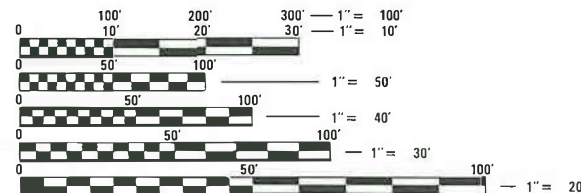
OMISSIONS: STRUCTURE 013-0044

STATION 474+42 TO 476+65

ADT = 1300 (2016)

PROJECT BEGINS
STATION 437+81

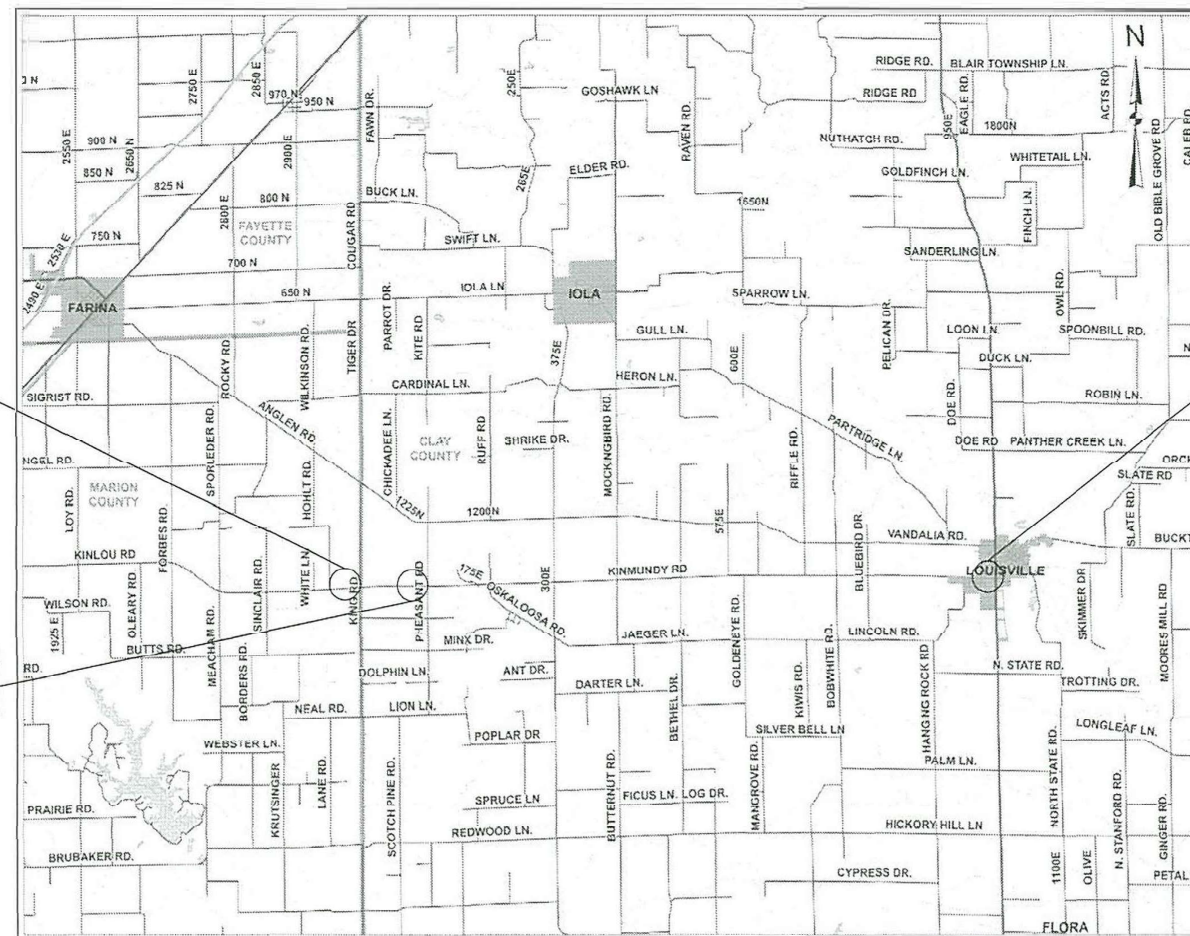
PROJECT ENDS
STATION 974+63



FULL SIZE PLANS HAVE BEEN PREPARED USING STANDARD ENGINEERING SCALES. REDUCED SIZED PLANS WILL NOT CONFORM TO STANDARD SCALES. IN MAKING MEASUREMENTS ON REDUCED PLANS, THE ABOVE SCALES MAY BE USED.

J.U.L.I.E.
JOINT UTILITY LOCATION INFORMATION FOR EXCAVATORS
1-800-892-0123
OR 811

PAVING OMISSION
STA. 474+42 TO
STA. 476+65



PROJECT ENGINEER: TOM RONAN
PROJECT MANAGER: JAQUELINE ASHBAUGH
PHONE NUMBER: (217) 342-8320
CONTRACT NO. 74942

GROSS LENGTH = 53,817.6 FT. = 10.19 MILE
NET LENGTH = 53,594.6 FT. = 10.15 MILE

STATE OF ILLINOIS
DEPARTMENT OF TRANSPORTATION

SUBMITTED April 21 2021
Jeffrey P. Myrberg
REGIONAL ENGINEER

May 7, 2021
Scott A. Clark
ENGINEER OF DESIGN AND ENVIRONMENT

May 7, 2021
James J. Guerin
DIRECTOR OF HIGHWAYS PROJECT IMPLEMENTATION

PRINTED BY THE AUTHORITY
OF THE STATE OF ILLINOIS

INDEX OF SHEETS

SHEET NO.	ITEM
1	COVER SHEET
2	INDEX OF SHEETS & GENERAL NOTES
3-4	SUMMARY OF QUANTITIES
5	TYPICAL SECTIONS
6	SCHEDULE OF QUANTITIES
7	BUTT-JOINT DETAIL
8	SURVEY MARKER VAULT
9	SURVERY MARKER SCHEDULE
10-11	ENTRANCE SCHEDULE AND DETAILS
12-15	PAVEMENT MARKING DETAILS

THE FOLLOWING STANDARDS ARE A PART OF THESE PLANS AND ARE INCLUDED AFTER SHEET NO. 15 :

STD. NO.	DESCRIPTION
000001-08	STANDARD SYMBOLS, ABBREVIATIONS AND PATTERNS
406201-01	MAILBOX TURNOUT
442201-03	CLASS C AND D PATCHES
667101-02	PERMANENT SURVEY MARKERS
701001-02	OFF-RD OPERATIONS, 2L, 2W, MORE THAN 15' FROM PAVEMENT EDGE
701006-05	OFF-RD OPERATIONS, 2L, 2W, 15' TO 24" FROM PAVEMENT EDGE
701011-04	OFF-RD MOVING OPERATIONS, 2L,2W, DAY ONLY
701201-05	LANE CLOSURE 2L, 2W, DAY ONLY
701301-04	LANE CLOSURE, 2L, 2W, SHORT TIME OPERATIONS
701306-04	LANE CLOSURE, 2L, 2W, SLOW MOVING OPERATIONS DAY ONLY, FOR SPEEDS ≥ 45 MPH
701311-03	LANE CLOSURE 2L, 2W, MOVING OPERATIONS - DAY ONLY
701901-08	TRAFFIC CONTROL DEVICES

GENERAL NOTES

THE RESIDENT ENGINEER SHALL BE THE SOLE JUDGE CONCERNING THE CURING TIME FOR THE VARIOUS HOT-MIX ASPHALT LIFTS.

THE MATERIAL USED FOR AGGREGATE WEDGE SHOULDERS, TYPE B SHALL BE RAP, CRUSHED STONE, OR CRUSHED CONCRETE. THE MATERIAL USED FOR AGGREGATE SURFACE COURSE, TYPE B SHALL BE CRUSHED STONE OR CRUSHED CONCRETE.

PAVEMENT MARKING SHALL BE APPLIED IN ACCORDANCE WITH SECTION 780 OF THE STANDARD SPECIFICATIONS. SHORT TERM PAVEMENT MARKING SHALL BE APPLIED TO THE MILLED SURFACE, BITUMINOUS MATERIALS (TACK COAT), HOT-MIX ASPHALT BINDER COURSE, AND HOT-MIX ASPHALT SURFACE COURSE AS SPECIFIED IN SECTION 703 OF THE STANDARD SPECIFICATIONS. TEMPORARY TAPE SHALL BE USED ON THE SURFACE COURSE AND PAINT SHALL BE USED ON MILLED SURFACES AND BINDER.

THE FOLLOWING RATES OF APPLICATION HAVE BEEN USED IN CALCULATING PLAN QUANTITIES:

HOT MIX ASPHALT	112 LBS/SQ YD/IN
BITUMINOUS MATERIALS (TACK COAT)	0.05 LBS/SQ FT
MILLED SURFACES ON BINDER	0.025 LBS/ SQ FT
GRANULAR MATERIAL	2.05 TONS/CU YD

MIX DESIGN NOTE					
APPLICATION	AC/PG	DESIGN AIR	MIXTURE	FRICTION	QUALITY
		VOIDS	COMPOSITION	AGGREGATE	MANAGEMENT
HMA SURFACE COURSE, MIX "C", N70 (1 1/2")	PG 64-22	4.0% @ N=70	IL - 9.5	MIXTURE C	PFM
HMA BINDER COURSE, IL-9.5FG, N70, (1 1/4")	PG 64-22	4.0% @ N=70	IL - 9.5FG	N/A	PFM
INCIDENTAL HMA SURFACING	PG 64-22	4.0% @ N=70	IL - 9.5	MIXTURE C	QC/QA
CLASS "D" PAVEMENT PATCHING	PG 64-22	4.0% @ N=70	IL - 19.0	N/A	QC/QA

REV. - MS

MODEL: Default
 FILE: M:\GIS\Projects\GIS\Projects\DOT\Office\District 3\Project\74942\CADD\Sheet\DOT74942-std-std.dgn

USER NAME = steffenmk	DESIGNED -	REVISED -	STATE OF ILLINOIS DEPARTMENT OF TRANSPORTATION	GENERAL NOTES AND INDEX OF SHEETS	F.A.S. RTE.	SECTION	COUNTY	TOTAL SHEETS	SHEET NO.
DRAWN -	REVISED -	2703			9RS-2	CLAY	15	2	
PLOT SCALE = 100.0000' / in.	CHECKED -	REVISED -			CONTRACT NO. 74942				
PLOT DATE = 4/6/2021	DATE -	REVISED -			ILLINOIS FED. AID PROJECT				
				SCALE:	SHEET 1	OF 1	SHEETS	STA.	TO STA.

80% FED
20% STATE

80% FED
20% STATE

SUMMARY OF QUANTITIES			TOTAL QUANTITIES	CONSTRUCTION TYPE CODE		
CODE NO	ITEM	UNIT		0005		
40200800	AGGREGATE SURFACE COURSE, TYPE B	TON	531	531		
40600290	BITUMINOUS MATERIALS (TACK COAT)	POUND	58805	58805		
40600982	HOT-MIX ASPHALT SURFACE REMOVAL - BUTT JOINT	SQ YD	147	147		
40600990	TEMPORARY RAMP	SQ YD	88	88		
40602970	HOT-MIX ASPHALT BINDER COURSE, IL-9.5FG, N70	TON	9147	9147		
40604052	HOT-MIX ASPHALT SURFACE COURSE, IL-9.5, MIX "C", N70	TON	10977	10977		
40800050	INCIDENTAL HOT-MIX ASPHALT SURFACING	TON	100	100		
44000157	HOT-MIX ASPHALT SURFACE REMOVAL, 2"	SQ YD	130531	130531		
44201827	CLASS D PATCHES, TYPE II, 15 INCH	SQ YD	20	20		
44201831	CLASS D PATCHES, TYPE III, 15 INCH	SQ YD	113	113		
44201833	CLASS D PATCHES, TYPE IV, 15 INCH	SQ YD	151	151		
48102100	AGGREGATE WEDGE SHOULDER, TYPE B	TON	7610	7610		
50105220	PIPE CULVERT REMOVAL	FOOT	42	42		
54214293	END SECTIONS, EQUIVALENT ROUND-SIZE 18"	EACH	4	4		

SUMMARY OF QUANTITIES			TOTAL QUANTITIES	CONSTRUCTION TYPE CODE		
CODE NO	ITEM	UNIT		0005		
542A5473	PIPE CULVERTS, CLASS A, TYPE 1 EQUIVALENT ROUND-SIZE 18"	FOOT	42	42		
66700205	PERMANENT SURVEY MARKERS, TYPE I	EACH	3	3		
67000400	ENGINEER'S FIELD OFFICE, TYPE A	CAL MO	4	4		
67100100	MOBILIZATION	L SUM	1	1		
70100450	TRAFFIC CONTROL AND PROTECTION, STANDARD 701201	L SUM	1	1		
70100460	TRAFFIC CONTROL AND PROTECTION, STANDARD 701306	L SUM	1	1		
70107025	CHANGEABLE MESSAGE SIGN	CAL DA	28	28		
70300100	SHORT TERM PAVEMENT MARKING	FOOT	16038	16038		
70300150	SHORT TERM PAVEMENT MARKING REMOVAL	SQ FT	1764	1764		
* 78001110	PAINT PAVEMENT MARKING - LINE 4"	FOOT	120283	120283		
X0326440	SURFACE REMOVAL, VARIABLE DEPTH (SPECIAL)	SQ YD	1090	1090		
X4060995	TEMPORARY RAMP, SPECIAL	SQ YD	326	326		
Z0033700	LONGITUDINAL JOINT SEALANT	FOOT	53459	53459		

* SPECIALTY ITEM

MODEL: Default
 FILE NAME: p:\pub\harronm.dwg
 PROJECT: 74942_CAD\DATA\CAD\PROJECTS\74942-518-500.dwg

USER NAME = steffenmk	DESIGNED -	REVISED -
PLOT SCALE = 100,0000 ' / in.	DRAWN -	REVISED -
PLOT DATE = 4/6/2021	CHECKED -	REVISED -
	DATE -	REVISED -

STATE OF ILLINOIS
DEPARTMENT OF TRANSPORTATION

SUMMARY OF QUANTITIES

SCALE: SHEET 1 OF 2 SHEETS STA. TO STA.

F.A.S. RTE.	SECTION	COUNTY	TOTAL SHEETS	SHEET NO.
2703	9RS-2	CLAY	15	3
CONTRACT NO. 74942				
ILLINOIS FED. AID PROJECT				

80% FED
20% STATE

SUMMARY OF QUANTITIES			TOTAL QUANTITIES	CONSTRUCTION TYPE CODE		
CODE NO	ITEM	UNIT		0005		
Z0049799	PROTECTING OR RESETTING SURVEY MARKERS	EACH	10	10		
Z0070202	SURVEY MARKER VAULT	EACH	3	3		

SUMMARY OF QUANTITIES			TOTAL QUANTITIES	CONSTRUCTION TYPE CODE		
CODE NO	ITEM	UNIT		0005		

MODEL: Default
 FILE NAME: P:\pub\lanscom.dwg
 ILLINOIS DOT
 Project: 7492, CAD Data: CAD Objects: 7492 - cis-500.dwg

USER NAME = steffenmk	DESIGNED -	REVISED -
DRAWN -	REVISION -	
PLOT SCALE = 100,0000 ' / in.	CHECKED -	REVISION -
PLOT DATE = 4/6/2021	DATE -	REVISION -

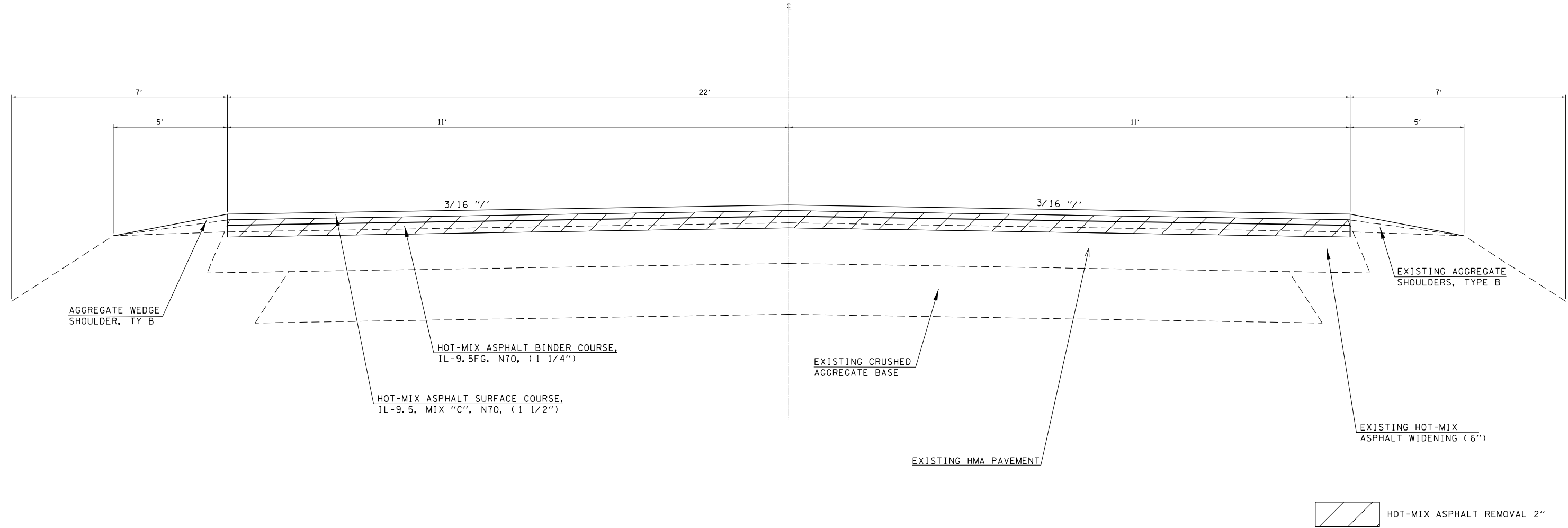
**STATE OF ILLINOIS
DEPARTMENT OF TRANSPORTATION**

SUMMARY OF QUANTITIES		
SCALE:	SHEET 2 OF 2 SHEETS	STA. TO STA.

F.A.S. RTE.	SECTION	COUNTY	TOTAL SHEETS	SHEET NO.
2703	9R5-2	CLAY	15	4
				CONTRACT NO. 74942
			ILLINOIS FED. AID PROJECT	

TYPICAL CROSS SECTION

STATION 437+81 TO STATION 474+42
 PAVING OMISSION: STATION 474+42 TO STATION 476+65
 STATION 476+65 TO 974+63



NOTE: NOT DRAWN TO SCALE

MODEL: Default
 FILE NAME: p:\pub\harronm.dwg
 PROJECT: 74942
 OFFICE: DISTRICT 7
 CONTRACT: 74942
 DRAWING: TYPICAL CROSS SECTION

USER NAME = steffenmk	DESIGNED -	REVISED -
	DRAWN -	REVISED -
PLOT SCALE = 100,0000 ' / in.	CHECKED -	REVISED -
PLOT DATE = 4/6/2021	DATE -	REVISED -

**STATE OF ILLINOIS
 DEPARTMENT OF TRANSPORTATION**

TYPICAL CROSS SECTION

SCALE: SHEET 1 OF 1 SHEETS STA. TO STA.

F.A.S. RTE.	SECTION	COUNTY	TOTAL SHEETS	SHEET NO.
2703	9RS-2	CLAY	15	5
CONTRACT NO. 74942				
ILLINOIS FED. AID PROJECT				

RESURFACING SCHEDULE

STATION	TO	STATION	LENGTH FOOT	PAVEMENT WIDTH FOOT	AREA SQ YD	HOT-MIX ASPHALT SURFACE REMOVAL - BUTT JOINT SQ YD	HOT-MIX ASPHALT SURFACE REMOVAL, 2" SQ YD	BITUMINOUS MATERIALS (TACK COAT) POUND	HOT-MIX ASPHALT SURFACE COURSE, N70 TON	HOT-MIX ASPHALT BINDER COURSE, N70 TON	LONGITUDINAL JOINT SEALANT FOOT	AGGREGATE WEDGE SHULDERS, TYPE B TON	TEMPORARY RAMP SQ YD
437+81	to	437+96	15	22	37	37		17	3	3	15	2	22
437+96	to	474+27	3631	22	8876		8876	3994	746	621	3631	517	
474+27	to	474+42	15	22	37	37		17	3	3	15	2	22
474+42	to	476+65	223	22			PAVING OMISSION - BRIDGE						
476+65	to	476+80	15	22	37	37		17	3	3	15	2	22
476+80	to	974+48	49768	22	121655		121655	54745	10219	8516	49768	7085	
974+48	to	974+63	15	22	37	37		17	3	3	15	2	22
TOTALS						147	130531	58805	10977	9147	53459	7610	88

PAVEMENT MARKING SCHEDULE

STATION TO STATION			LENGTH	SHORT TERM PAVEMENT MARKING	SHORT TERM PAVEMENT MARKING REMOVAL	PAINT PAVEMENT MARKING LINE 4"	TEMP PAVEMENT MARKING LINE 4"
437+81	to	437+96	15.0	4.5	0.5	33.8	33.8
437+96	to	474+27	3631.0	1089.3	119.8	8169.8	8169.8
474+27	to	474+42	15.0	4.5	0.5	33.8	33.8
474+42	to	476+65	223.0	BRIDGE OMISSION			
476+65	to	476+80	15.0	4.5	0.5	33.8	33.8
476+80	to	974+48	49768.0	14930.4	1642.3	111978.0	111978.0
974+48	to	974+63	15.0	4.5	0.5	33.8	33.8
TOTALS			53682	16038	1764	120283	120283
WHITE PAINT TOTAL						106918	106919
YELLOW PAINT TOTAL				16038		13365	13364

PIPE CULVERT SCHEDULE

LOCATION		PIPE CULVERTS, CL A, TY 1 EQUIVALENT ROUND-SIZE 18" FOOT	END SECTIONS, EQUIVALENT ROUND-SIZE 18" EACH	PIPE CULVERT REMOVAL
746+34	LT	18	2	18
800+84	LT	24	2	24

MODEL: Default
FILE NAME: p:\pub\mcom.d\illinois.gov\PIWDOT\Documents\DOT_Offices\Distric: 7\Projects\74942_CADD\DATA\CAD\Drawings\74942-Sched.sch\dwg

USER NAME = stefenmk	DESIGNED -	REVISED -
	DRAWN -	REVISED -
PLOT SCALE = 100,0000' / in.	CHECKED -	REVISED -
PLOT DATE = 4/6/2021	DATE -	REVISED -

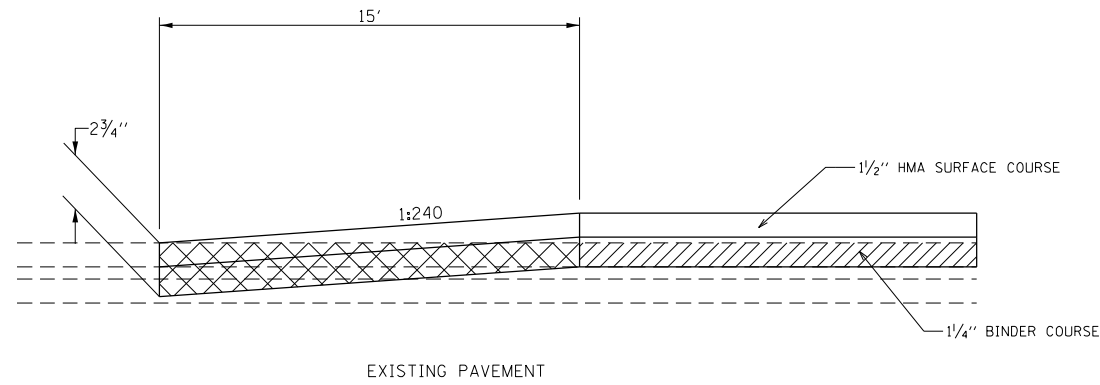
STATE OF ILLINOIS
DEPARTMENT OF TRANSPORTATION



SCHEDULE OF QUANTITIES			
SCALE:	SHEET 1	OF	SHEETS
	STA.	TO	STA.

F.A.S. RTE.	SECTION	COUNTY	TOTAL SHEETS	SHEET NO.
2703	9RS-2	CLAY	15	6
CONTRACT NO. 74942				
ILLINOIS FED. AID PROJECT				

BUTT JOINT DETAIL

STA. 437+81 TO STA. 437+96
 STA. 474+27 TO STA. 474+42
 STA. 476+65 TO STA. 476+80
 STA. 974+48 TO STA. 974+63



-  HOT-MIX ASPHALT SURFACE REMOVAL, 2"
-  HOT-MIX ASPHALT SURFACE REMOVAL - BUTT JOINT

MODEL: Default
 FILE NAME: p:\pub\lhamon.dwg
 PROJECT: 74942_CADD\Drawings\DOT_Offices\Drawings\74942_CADD\Drawings\DOT_74942-ctc-detail.dwg

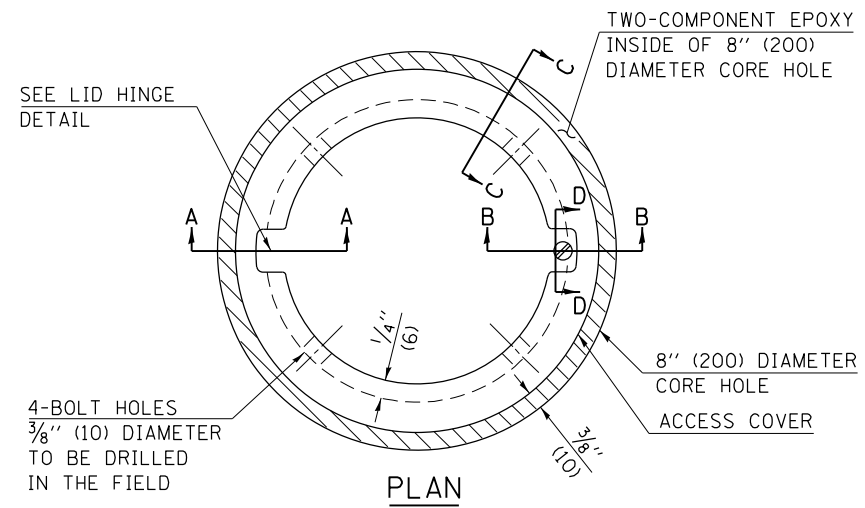
USER NAME = steffenmk	DESIGNED -	REVISED -
	DRAWN -	REVISED -
PLOT SCALE = 100,0000 ' / in.	CHECKED -	REVISED -
PLOT DATE = 4/6/2021	DATE -	REVISED -

**STATE OF ILLINOIS
 DEPARTMENT OF TRANSPORTATION**

BUTT-JOINT DETAIL

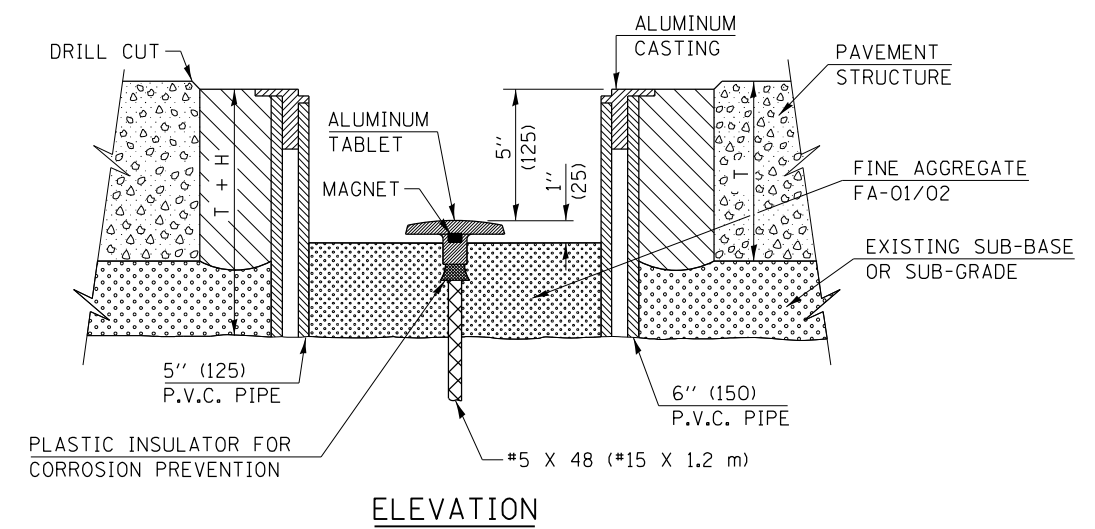
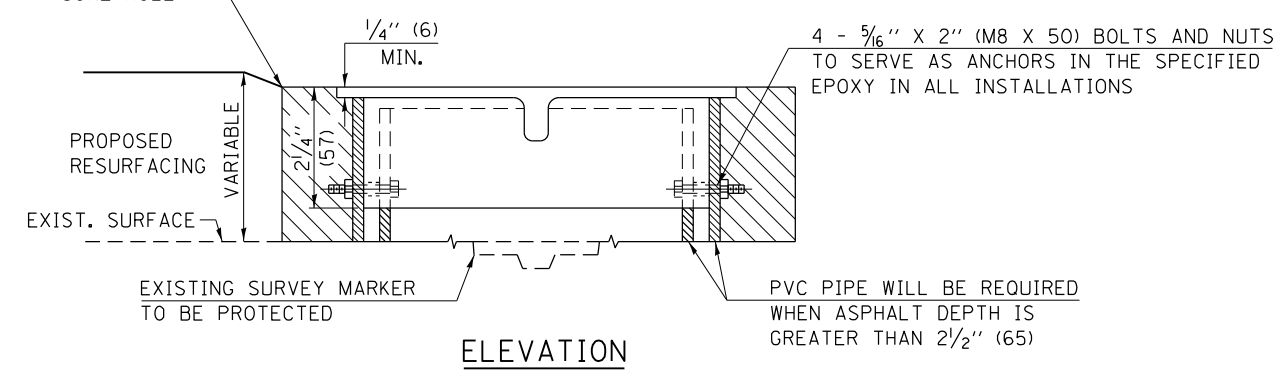
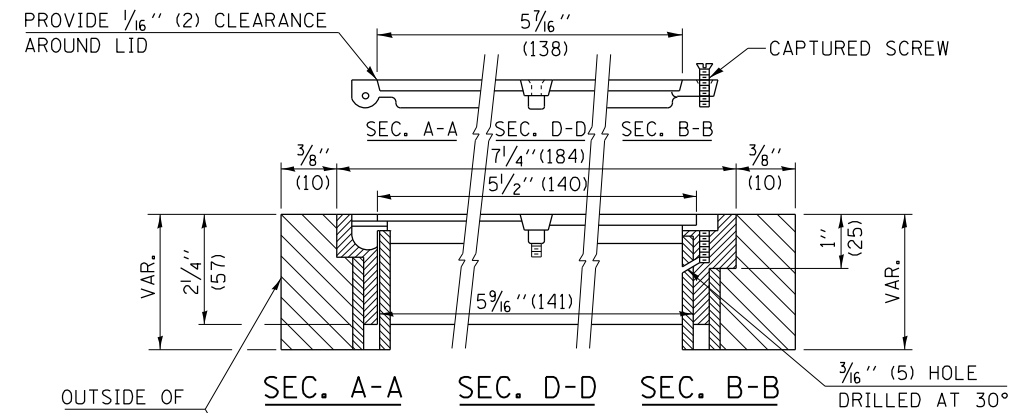
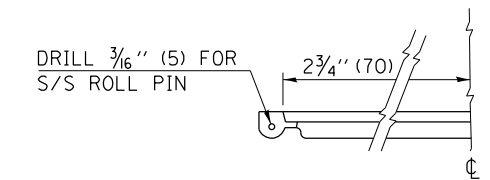
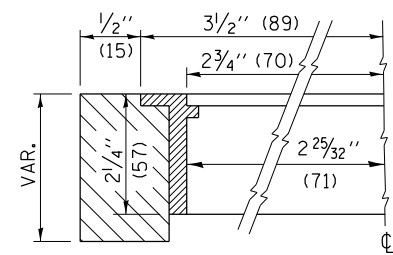
SCALE: SHEET 1 OF 1 SHEETS STA. TO STA.

F.A.S. RTE.	SECTION	COUNTY	TOTAL SHEETS	SHEET NO.
2703	9RS-2	CLAY	15	7
ILLINOIS FED. AID PROJECT			CONTRACT NO. 74942	



- LEGEND**
- ALUMINUM CASTING
 - 5" (125) OR 6" (150) P.V.C. PIPE
 - TWO-COMPONENT EPOXY
- T = THICKNESS OF PAVEMENT STRUCTURE
- H = THE THICKNESS OF THE SUB-BASE GRANULAR + 1" (25)

BILL OF MATERIAL	
ALUMINUM CASTING OF THE DIMENSIONS AND SPECIFICATIONS SHOWN OR OTHER SUBJECT TO ENGINEER'S APPROVAL OF SHOP DRAWINGS,	
4 EACH - 5/16" X 2" (M8 X 50) BOLTS WITH NUTS, EPOXY,	
5" OR 6" (125 mm OR 150 mm) DIAMETER P.V.C. PIPE, SCHEDULE 40 (WHEN REQUIRED).	



PROPOSED SURVEY MARKER

NOT TO SCALE

FILE NAME =	USER NAME = steffennk	DESIGNED -	REVISED - MAD 6-11
pw:\planroom.dot.illinois.gov\PIDOT\Documents\IDOT Offices\District 7\Projects\74942\DRAWING\CADsheets\0774942-shr-details.dgn		CHECKED -	REVISED -
		PLOT SCALE = 100.0000' / in.	REVISI
		PLOT DATE = 4/6/2021	REVISI

STATE OF ILLINOIS
DEPARTMENT OF TRANSPORTATION

SURVEY MARKER VAULT

SCALE:	SHEET NO. 1 OF 1 SHEETS	STA.	TO STA.
--------	-------------------------	------	---------

DISTRICT 7 DETAIL NO. Z0070202				
F.A.S. RTE.	SECTION	COUNTY	TOTAL SHEETS	SHEET NO.
2703	9RS-2	CLAY	15	8
CONTRACT NO. 74942				
FED. ROAD DIST. NO. ILLINOIS FED. AID PROJECT				

SURVEY MARKER SCHEDULE

POINT #	STA	•OFFSET	NORTHING	EASTING	ELEVATION	DESCRIPTION	EXISTING MARKER TYPE	PROTECTING OR RESETTING SURVEY MARKERS	PERMANENT SURVEY MARKERS, TYPE 1	SURVEY MARKER VAULT
								EACH	EACH	EACH
300	439+15	9.6 RT	765101.6	880749.6	536.639	BENT IP @ MARION COUNTY LINE & EAST BOUND LANE - NE CORNER OF SECTION 25, T4N, R4E	Vault	1		
310	457+40.93	0.0	765218.0	882569.5	564.363	POT - ALUM DISK IN CL RD	Vault	1		
301	469+69.05	1.6 LT	765194.843	883797.402	564.028	ALUM. DISK IN WBL - S1/4 CORNER OF SECTION 19, T4N, R5E	Vault	1		
302	474+50	0.0	765183.6	884278.2	572.241	POT - ALUM. DISK @ CENTER OF BRIDGE - No X-ties	IDOT Alum. Disk		1	
311	489+96.94	0.0	765152.4	885824.8	533.291	POT - ALUM DISK IN CL RD	IDOT Alum. Disk		1	
303	516+43	0.0	765155.4	888478.0	522.737	IP W/ CAP IN CL ROAD (PROPERTY CORNER) - No X-ties	Iron Pin	1		1
304	522+25	0.0	765160.3	889053.0	520.926	IP W/ CAP IN CL ROAD (PROPERTY CORNER) - No X-ties	Iron Pin	1		1
305	523+20	0.0	765160.8	889143.8	520.492	IP W/ CAP IN CL ROAD - S 1/4 CORNER OF SECTION 20, T4N, R5E	Vault	1		
306	549+71	0.0	765182.7	891806.7	519.504	IP W/ CAP @ CL & CL OSKALOOSA RD. - SE CORNER OF SECTION 20, T4N, R5E	Vault	1		
307	603+50	0.0	765240.6	897170.0	524.304	MAG/WASH @ CL & CL XENIA/IOLA RD. - NW CORNER OF SECTION 27, T4N, R5E	Vault	1		
308	921+95	0.0	765120.3	929065.7	491.372	MAG/WASH IN CL -SW CORNER OF SECTION 22, T4N, R6E	Vault	1		
309	976+26	3.0 LT EXTENDED CL KINLOU Rd	764863.8	934428.3	478.644	BROKEN DISK 1.0 FT WEST OF CL US 45 (ONLY STEM LEFT) NW CORNER SECTION 26, T4N, R6E	IDOT Alum. Disk	1	1	1
							TOTALS	10	3	3

MODEL: Default
 FILE NAME: p:\pub\mroom.dwg
 PROJECT: 74942_CADDData\CAD\Projects\DOT Office\Drawings\74942-SMS\Schedule.dwg

USER NAME = steffenmk	DESIGNED -	REVISED -
	DRAWN -	REVISED -
PLOT SCALE = 100,0000' / in.	CHECKED -	REVISED -
PLOT DATE = 4/6/2021	DATE -	REVISED -

**STATE OF ILLINOIS
DEPARTMENT OF TRANSPORTATION**

SURVEY MARKER SCHEDULE

SCALE: SHEET 1 OF 1 SHEETS STA. TO STA.

F.A.S. RTE.	SECTION	COUNTY	TOTAL SHEETS	SHEET NO.
2703	9RS-2	CLAY	15	9
CONTRACT NO. 74942				
ILLINOIS FED. AID PROJECT				

MODEL: Default
 FILE NAME: p:\pub\baronon.dwg
 PROJECT: 74942.CADD\DATA\CAD\PROJECTS\74942-SP-SCHEDULE.dwg

ENTRANCE SCHEDULE			INCIDENTAL HOT-MIX ASPHALT SURFACING	AGGREGATE SURFACE COURSE, TYPE B	SURFACE REMOVAL, VARIABLE DEPTH (SPECIAL)	TEMPORARY RAMP, SPECIAL
SIDE	STATION	TYPE	TON	TON	SO YD	SO YD
LT	973+02	PE		1.8		
LT	972+71	PE		2.3		
LT	972+07	PE		2.3		
LT	970+67	PE		2.9		
LT	969+75	PE		2.4		
LT	968+96	PE		1.9		
LT	968+17	PE		1.8		
LT	966+65	PRA	3.8		39	11
LT	964+68	PE		2.3		
LT	963+62	PRA	5.0		51	14
LT	962+32	CE		3.4		
LT	961+73	CE		2.5		
LT	960+69	PE		3.6		
LT	959+40	PE		2.0		
LT	958+71	PE		2.1		
LT	957+77	PE	2.0		21	7
LT	956+77	PE	1.9		19	6
LT	956+04	PE		2.3		
LT	954+90	FE		2.2		
LT	952+34	MBT		3.2		
LT	948+70	FE		3.7		
LT	928+58	PE		2.3		
LT	926+82	PE		2.4		
LT	925+35	FE		5.1		
LT	922+03	FE		3.5		
LT	921+81	MBT		1.3		
LT	920+06	FE		2.5		
LT	905+35	FE		4.2		
LT	896+41	FE		3.7		
LT	895+58	MBT		3.1		
LT	894+84	CE	4.8		49	16
LT	893+93	CE	5.0		51	18
LT	881+87	FE		3.7		
LT	870+89	PE		3.7		
LT	870+67	MBT		2.1		
LT	868+26	PRA	5.3		65	18
LT	854+96	FE		4.5		
LT	841+48	PRA	6.9		84	26
LT	814+95	PRA	4.8		88	13
LT	800+84	FE		3.7		
LT	787+78	FE		4.0		
LT	775+36	PRA	3.3		30	12
LT	771+81	FE		2.7		
LT	765+85	MBT		1.9		
LT	758+81	MBT		1.9		
LT	751+48	FE		2.8		
LT	749+81	PRA	4.7		48	17

ENTRANCE SCHEDULE (CONT'D)			INCIDENTAL HOT-MIX ASPHALT SURFACING	AGGREGATE SURFACE COURSE, TYPE B	SURFACE REMOVAL, VARIABLE DEPTH (SPECIAL)	TEMPORARY RAMP, SPECIAL
SIDE	STATION	TYPE	TON	TON	SO YD	SO YD
LT	748+24	FE		3.8		
LT	746+34	FE		2.5		
LT	723+36	FE		4.3		
LT	721+77	PE		3.7		
LT	721+51	MBT		2.7		
LT	714+01	MBT		1.9		
LT	709+76	PRA	6.3		64	22
LT	703+41	MBT		3.6		
LT	702+26	MBT		5.1		
LT	696+42	PE		2.8		
LT	695+40	MBT		4.0		
LT	694+84	PE		4.9		
LT	683+30	FE		3.0		
LT	656+40	PRA	4.8		49	17
LT	642+93	FE		3.9		
LT	629+82	FE		4.2		
LT	604+34	FE		3.9		
LT	603+44	PRA	6.4		66	0
LT	595+59	CE		5.3		
LT	591+11	PE		3.7		
LT	577+41	FE		4.1		
LT	570+58	FE		4.0		
LT	563+22	FE		4.9		
LT	550+75	FE		3.9		
LT	549+77	PRA	3.0		18	11
LT	545+49	FE		3.9		
LT	537+61	FE		4.2		
LT	519+31	PE		3.3		
LT	513+82	FE		4.2		
LT	496+56	PRA	5.0		51	18
LT	479+88	FE		3.4		
LT	467+97	FE		5.1		
LT	466+56	PE		3.6		
LT	461+72	FE		4.0		
LT	439+24	PRA	6.3		89	23
RT	439+21	PRA	6.0		61	20
RT	439+94	FE		4.0		
RT	444+25	FE		4.2		
RT	450+07	FE		3.9		
RT	461+77	FE		3.7		
RT	463+71	FE		2.7		
RT	466+48	FE		3.0		
RT	482+95	PE	3.1		32	11
RT	489+97	FE		3.9		
RT	496+61	PRA	6.1		62	24
RT	503+03	FE		3.2		
RT	516+24	FE		3.9		

ENTRANCE SCHEDULE (CONT'D)			INCIDENTAL HOT-MIX ASPHALT SURFACING	AGGREGATE SURFACE COURSE, TYPE B	SURFACE REMOVAL, VARIABLE DEPTH (SPECIAL)	TEMPORARY RAMP, SPECIAL
SIDE	STATION	TYPE	TON	TON	SO YD	SO YD
RT	519+30	MBT		4.2		
RT	529+66	PE		4.0		
RT	529+93	MBT		3.1		
RT	536+57	FE		2.5		
RT	538+67	FE		3.9		
RT	549+73	PRA	5.3		54	21
RT	570+53	FE		3.9		
RT	575+35	FE		4.0		
RT	583+92	FE		6.3		
RT	585+77	FE		5.6		
RT	586+62	FE		2.8		
RT	594+14	FE		2.7		
RT	603+30	PRA		7.3		
RT	629+55	FE		3.5		
RT	630+61	CE		4.9		
RT	632+68	CE		4.5		
RT	636+70	PE		4.4		
RT	656+31	PRA		5.1		
RT	668+49	PE		4.2		
RT	669+72	PE		4.7		
RT	696+27	FE		4.4		
RT	702+12	PE		4.6		
RT	703+37	PE		4.2		
RT	709+81	PRA		6.6		
RT	714+02	PE		3.7		
RT	734+85	FE		3.5		
RT	749+58	FE		3.7		
RT	756+55	FE		3.5		
RT	758+89	PE		3.8		
RT	763+14	PRA		6.1		
RT	765+78	PE		4.2		
RT	775+69	FE		4.2		
RT	780+52	FE		3.9		
RT	801+49	FE		3.5		
RT	821+93	FE		4.0		
RT	828+28	FE		4.0		
RT	829+72	FE		3.9		
RT	841+67	PRA		7.0		
RT	851+94	FE		3.5		
RT	867+56	FE		5.1		
RT	868+45	PRA		5.9		
RT	871+05	CE		4.8		
RT	895+52	PE		3.3		
RT	898+98	FE		4.2		
RT	905+48	FE		4.1		
RT	906+93	FE		4.4		
RT	912+18	FE		5.0		

ENTRANCE SCHEDULE (CONT'D)			INCIDENTAL HOT-MIX ASPHALT SURFACING	AGGREGATE SURFACE COURSE, TYPE B	SURFACE REMOVAL, VARIABLE DEPTH (SPECIAL)	TEMPORARY RAMP, SPECIAL
SIDE	STATION	TYPE	TON	TON	SO YD	SO YD
RT	922+15	PE		3.3		
RT	935+95	FE		4.9		
RT	943+61	CE		4.7		
RT	948+61	PE		2.5		
RT	949+31	PRA		4.9		
RT	951+17	PE		4.9		
RT	951+69	PE		4.2		
RT	952+42	PE		3.9		
RT	953+66	PRA		4.4		
RT	957+85	PE		5.1		
RT	959+16	PE		5.4		
RT	959+43	PRA		4.9		
RT	961+04	PE		2.7		
RT	962+17	PRA		3.1		
RT	963+99	PRA		3.4		
RT	967+03	MBT		4.6		
RT	967+35	PE		3.5		
RT	967+88	PE		4.2		
RT	969+81	CE		4.4		
RT	971+71	CE		5.5		
TOTALS			100	531	1090	326

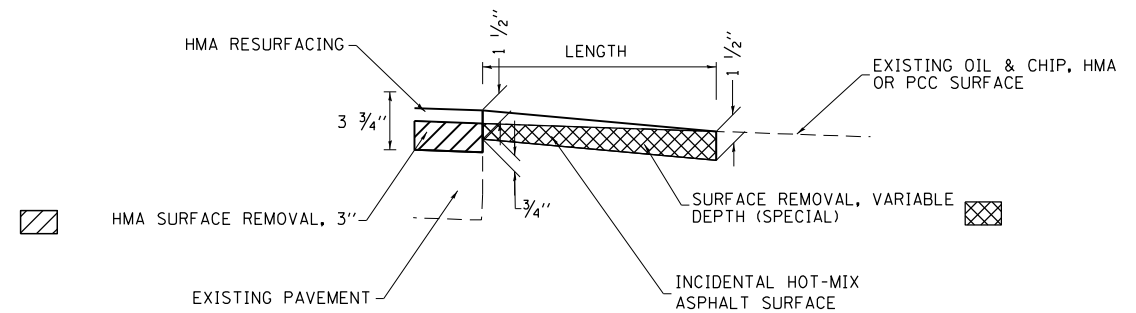
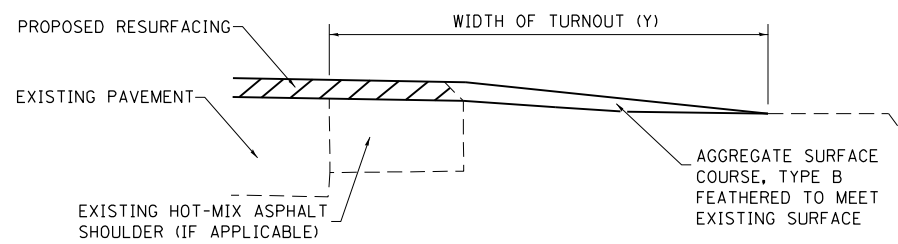
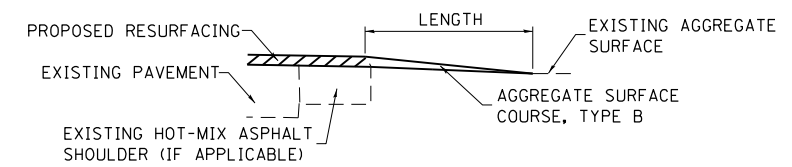
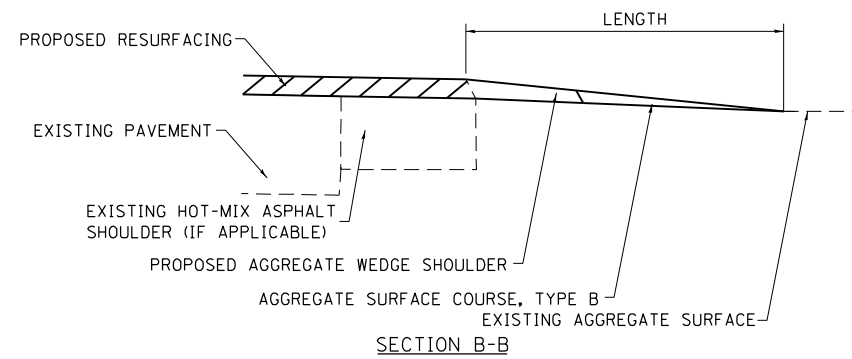
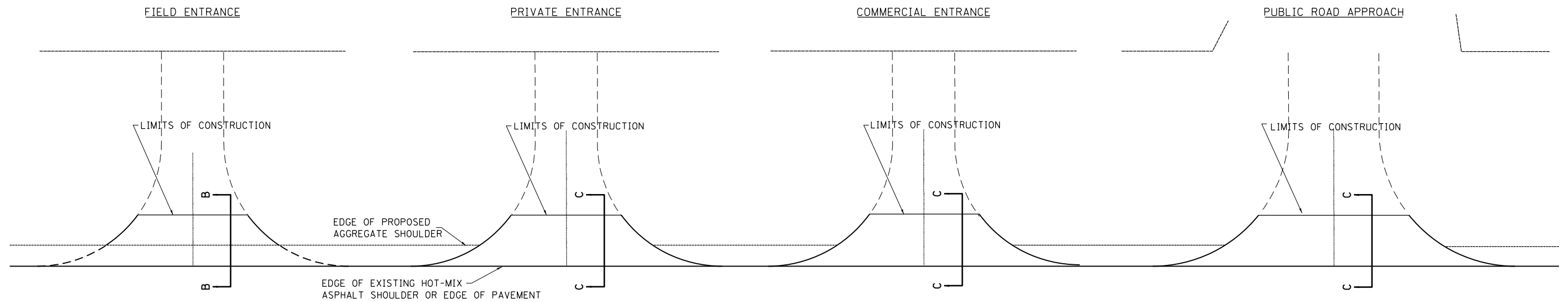
USER NAME = stefenmk	DESIGNED -
	DRAWN -
PLOT SCALE = 100,0000' / in.	CHECKED -
PLOT DATE = 4/6/2021	DATE -

REVISED -
REVISED -
REVISED -
REVISED -

**STATE OF ILLINOIS
DEPARTMENT OF TRANSPORTATION**

SCHEDULE OF ENTRANCES	
SCALE:	SHEET 1 OF 1 SHEETS STA. TO STA.

F.A.S. RTE.	SECTION	COUNTY	TOTAL SHEETS	SHEET NO.
2703	9R5-2	CLAY	15	10
CONTRACT NO. 74942				
ILLINOIS FED. AID PROJECT				



TYPICAL SECTION AT MAILBOX TURNOUT

NOTE: SEE STANDARD 406201 FOR MAILBOX TURNOUT DETAILS

NOTES

LENGTH = 10' UNLESS OTHERWISE NOTED ON PLANS

IF THERE IS NOT EXISTING HOT-MIX ASPHALT SHOULDER THEN THE ENTRANCE TAPER STARTS AT THE EDGE OF EXISTING PAVEMENT.

THE COST OF THE BITUMINOUS MATERIALS (TACK COAT) FOR ENTRANCES AND PUBLIC ROAD APPROACHES SHALL BE INCLUDED IN THE PAY ITEM INCIDENTAL HOT-MIX ASPHALT SURFACING.

MODEL: Default
 FILE NAME: p:\pub\mtr\room.dwt\illinois.gov\PIWDOT\Documents\DOT_Offices\District_7\Projects\74942_CADD\DATA\CADD\Drawings\74942-SP-DRW-116.dgn

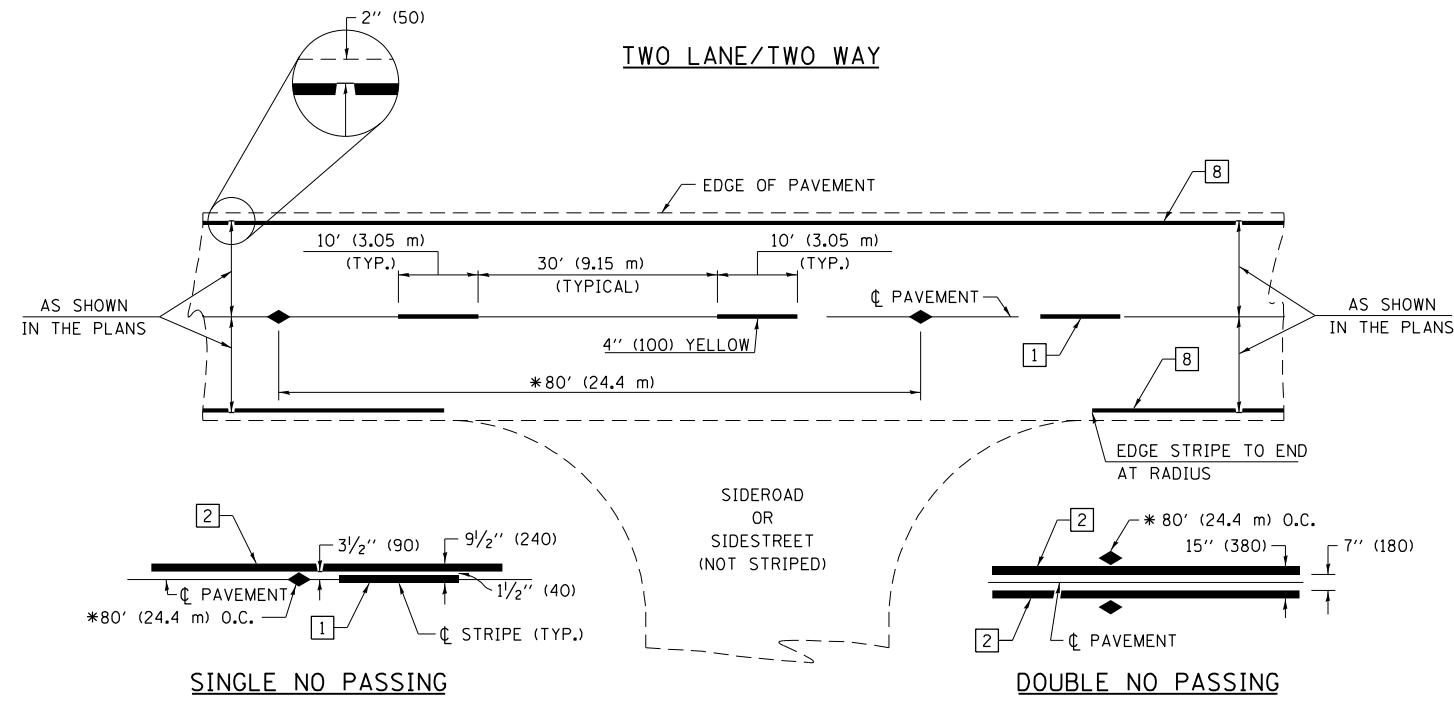
USER NAME = steffenmk	DESIGNED -	REVISED -
	DRAWN -	REVISED -
PLOT SCALE = 100,0000' / in.	CHECKED -	REVISED -
PLOT DATE = 4/6/2021	DATE -	REVISED -

**STATE OF ILLINOIS
DEPARTMENT OF TRANSPORTATION**

**RURAL ENTRANCE AND MAILBOX TURNOUT DETAILS
WITH SHOULDERS**

SCALE: SHEET 1 OF 1 SHEETS STA. TO STA.

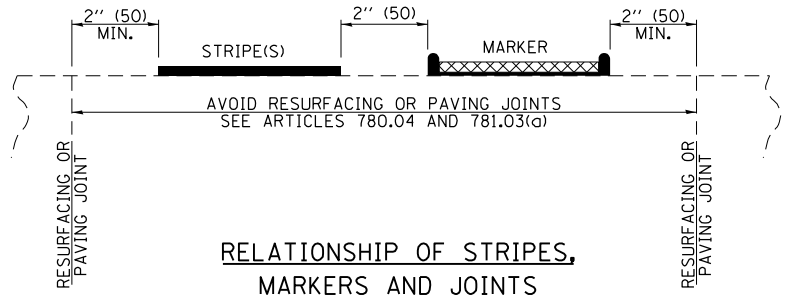
F.A.S. RTE.	SECTION	COUNTY	TOTAL SHEETS	SHEET NO.
2703	9RS-2	CLAY	15	11
CONTRACT NO. 74942			ILLINOIS FED. AID PROJECT	



* REDUCE TO 40' (12.2 m) O.C. ON CURVES WITH POSTED OR ADVISORY SPEEDS OF 45 mph (70 km/h) OR LESS.

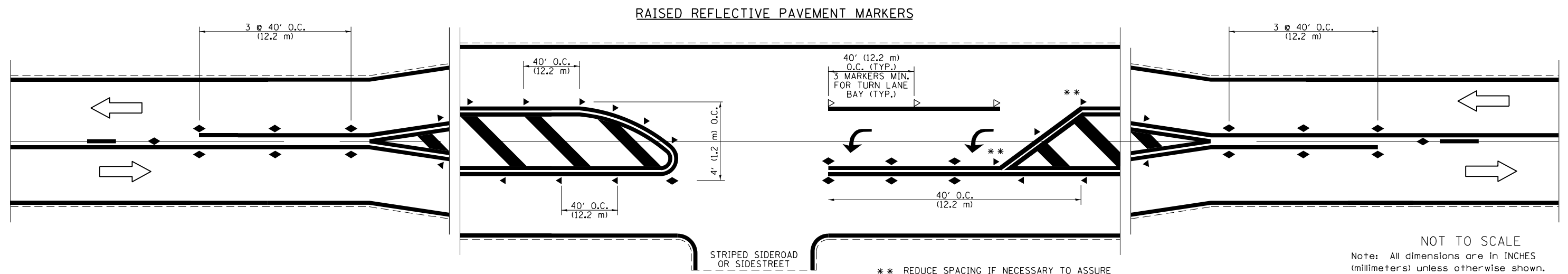
PAVEMENT MARKING LEGEND

- 1 4" (100) SKIP-DASH (YELLOW)
 - 2 4" (100) SOLID (YELLOW)
 - 3 12" (300) DIAGONAL (YELLOW)
 - 4 4" (100) DOUBLE YELLOW (NARROW)
 - 5 12" (300) SOLID WHITE
 - 6 RESERVED
 - 7 6" (150) SKIP-DASH (WHITE)
 - 8 4" (100) SOLID (WHITE)
 - 9 12" (300) DIAGONAL (WHITE)
 - 10 6" (150) SOLID (WHITE)
 - 11 24" (600) STOP BAR (WHITE)
 - 12 8" (200) SOLID (WHITE)
 - 13 4" (100) PARKING WHITE
-



TYPICAL PAVEMENT MARKERS LEGEND

- ◆ TWO-WAY AMBER MARKER
- ▶ ONE-WAY AMBER MARKER
- ▷ ONE-WAY CRYSTAL MARKER



** REDUCE SPACING IF NECESSARY TO ASSURE MARKERS AT CORNER POINTS.

NOT TO SCALE
Note: All dimensions are in INCHES (millimeters) unless otherwise shown.

DISTRICT 7 DETAIL NO. 7800001

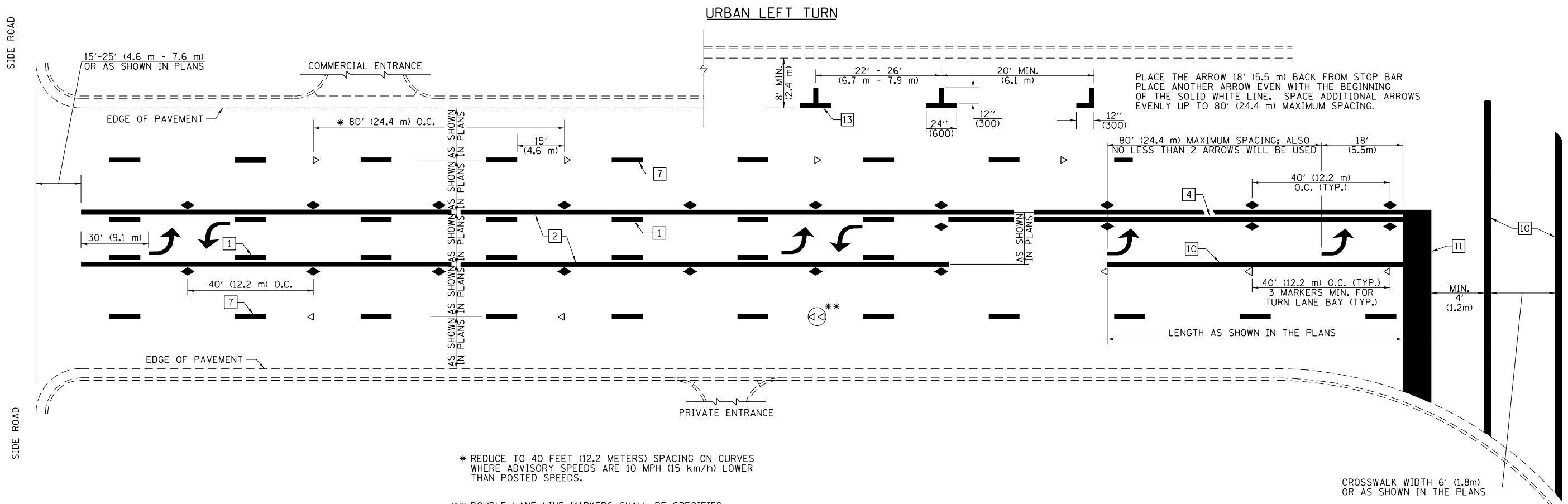
FILE NAME =	USER NAME = steffenmk	DESIGNED -	REVISED -
pw:\plnroom.dot.illinois.gov\PWIDOT\Documents\IDOT Offices\District 7\Projects\74942\DRAWN\CADsheets\0774942-shd-details.dgn		CHECKED -	REVISED -
		DATE -	REVISED -

**STATE OF ILLINOIS
DEPARTMENT OF TRANSPORTATION**

**PAVEMENT MARKING AND RAISED REFLECTIVE PAVEMENT MARKERS
(RURAL & URBAN APPLICATIONS)**

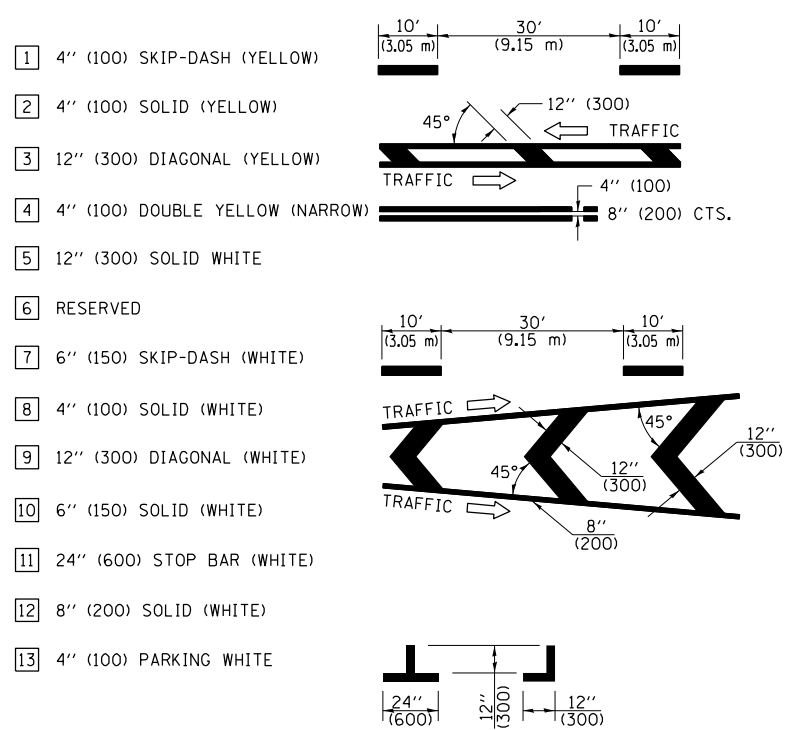
SCALE: SHEET NO. 1 OF 4 SHEETS STA. TO STA.

F.A.S. RTE.	SECTION	COUNTY	TOTAL SHEETS	SHEET NO.
2703	9RS-2	CLAY	15	12
CONTRACT NO. 74942				
ILLINOIS FED. AID PROJECT				



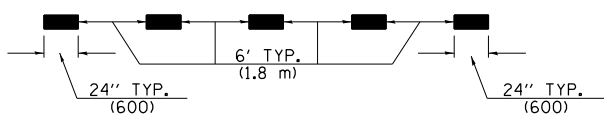
- * REDUCE TO 40 FEET (12.2 METERS) SPACING ON CURVES WHERE ADVISORY SPEEDS ARE 10 MPH (15 km/h) LOWER THAN POSTED SPEEDS.
- ** DOUBLE LANE LINE MARKERS SHALL BE SPECIFIED AND SPACED AS SHOWN IN HIGHWAY STANDARD 781001 FOR MULTI-LANE DIVIDED AND UNDIVIDED HIGHWAYS.

PAVEMENT MARKING LEGEND

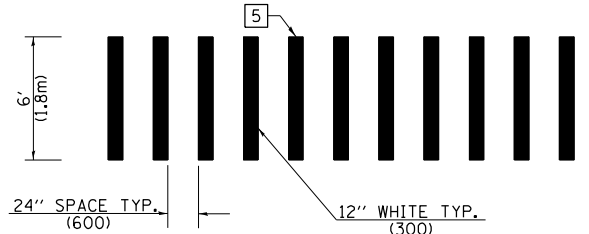


GENERAL NOTES

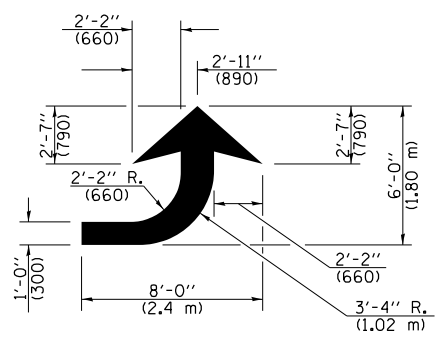
1. TURN ARROW PAIRS SHALL BE PLACED AT 250' (75 m) INTERVALS AND SHALL BE EVENLY SPACED BETWEEN BOTH ENDS OF THE BIDIRECTIONAL LEFT TURN LANE. USE A MINIMUM OF TWO PAIRS PER BLOCK.
2. THE SOLID YELLOW PAVEMENT MARKINGS [2] SHOULD GENERALLY START OR END NEAR THE RADIUS POINT OF EACH STREET RETURN EXCEPT WHERE ONE OR BOTH ENDS WOULD INCLUDE STOP BARS.
3. THE SKIP-DASH PAVEMENT MARKINGS [1] OR [7] SHOULD BE CENTERED BETWEEN BOTH ENDS OF EACH CITY BLOCK AND SHALL BE PLACED SO THEY LINE UP ACROSS FROM EACH OTHER.
4. USE LARGE ARROW SIZE FOR BOTH RURAL AND URBAN LOCATIONS. (SEE LAST PAGE OF SECTION 780x FOR SYMBOLS TABLE)
5. LANE LINE EXTENSIONS SHALL BE THE SAME COLOR AND WIDTH AS THE LANE LINE BEING EXTENDED.



LANE LINE EXTENSIONS

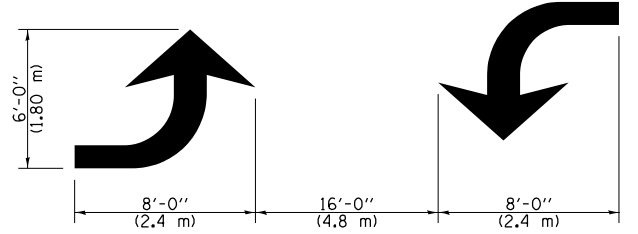


CROSSWALK DETAIL (DECATUR CITY LIMITS ONLY)



LEFT ARROW

REVERSE FOR RIGHT ARROW
AREA = 15.6 SQ. FT. (1.47 m²)
(WHITE)



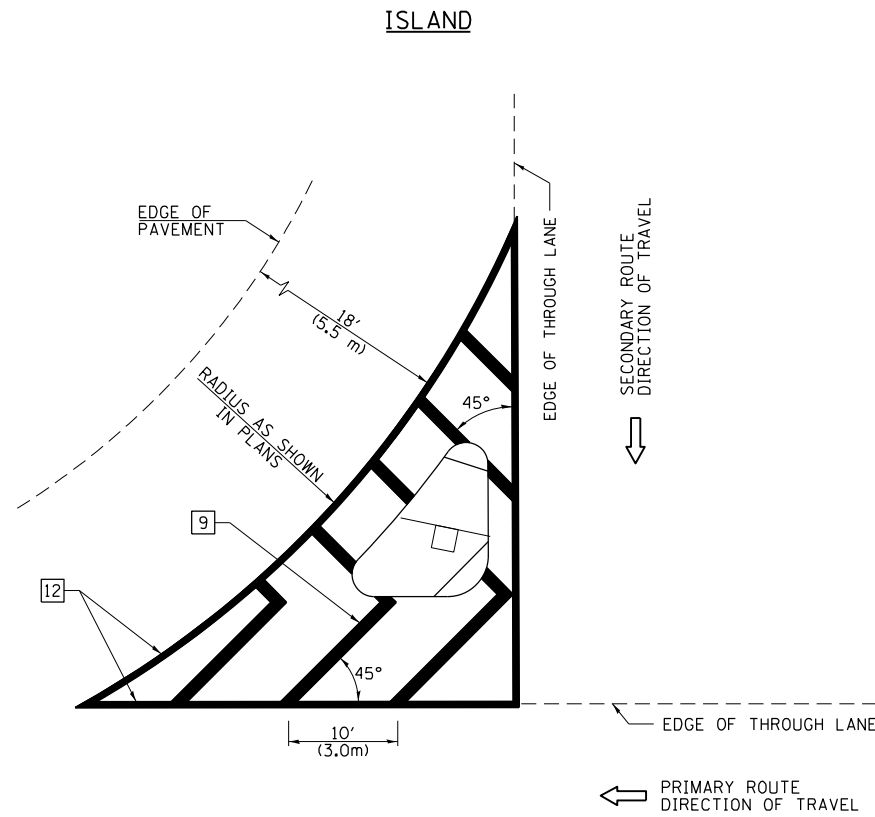
TYPICAL DOUBLE TURN ARROWS (WHITE)

NOT TO SCALE

Note: All dimensions are in INCHES (millimeters) unless otherwise shown.

DISTRICT 7 DETAIL NO. 7800001

FILE NAME =	USER NAME = steffenk	DESIGNED -	REVISED -	STATE OF ILLINOIS DEPARTMENT OF TRANSPORTATION	PAVEMENT MARKING AND RAISED REFLECTIVE PAVEMENT MARKERS (RURAL & URBAN APPLICATIONS)			F.A.S. RTE.	SECTION	COUNTY	TOTAL SHEETS	SHEET NO.
pw:\planroom.dot.illinois.gov\PWIDOT\Documents\IDOT Offices\District 7\Projects\74942\DRAWN\CADsheets\0774942-sht-details.dgn		CHECKED -	REVISED -					2703	9RS-2	CLAY	15	13
		PLOT SCALE = 100.0000' / in.	CHECKED -		REVISED -	CONTRACT NO. 74942						
		PLOT DATE = 4/6/2021	DATE -		REVISED -	ILLINOIS FED. AID PROJECT						

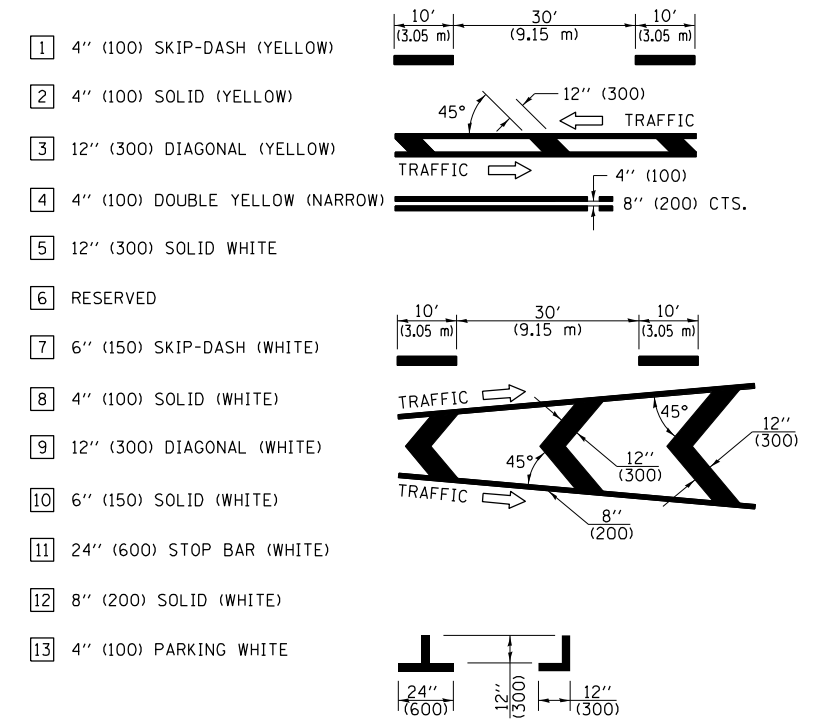


GENERAL NOTES

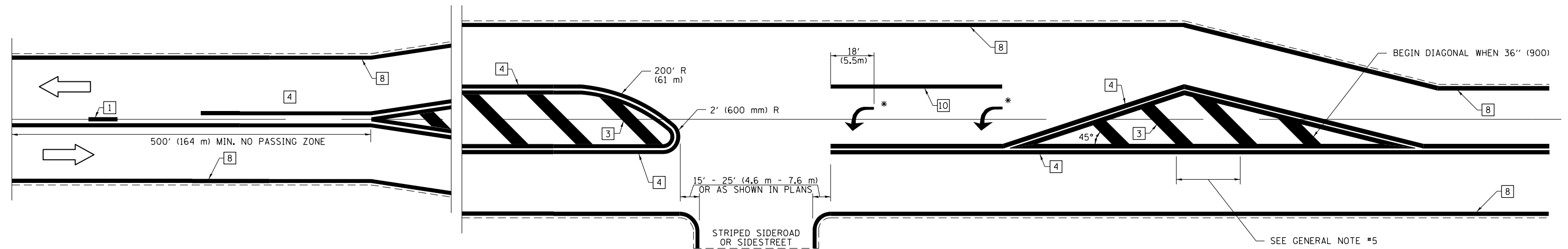
1. RAISED AND CORRUGATED MEDIANS SHALL BE OUTLINED WITH [2] IF PRESENT.
2. SOME OF THE INFORMATION INCLUDED WITH THIS DETAIL MAY NOT BE APPLICABLE TO THIS IMPROVEMENT.
3. PAVEMENT MARKINGS ARE TO BE EXTENDED THROUGH OMISSIONS WHEN APPLICABLE.
4. FINAL PAVEMENT MARKINGS SHALL BE IN PLACE PRIOR TO PLACING ANY RAISED REFLECTIVE PAVEMENT MARKERS.
5. THE FOLLOWING CRITERIA SHALL BE USED FOR SELECTING THE DIAGONAL PAVEMENT MARKING SPACING:

< 30 MPH (< 50 km/h)	15' (4.5 m)
30-45 MPH (50-75 km/h)	20' (6.0 m)
> 45 MPH (> 75 km/h)	30' (9.0 m)

PAVEMENT MARKING LEGEND



RURAL LEFT TURN STRIPING



* PLACE AN ARROW 18' (5.5 m) BACK FROM STOP BAR. PLACE ANOTHER ARROW EVEN WITH THE BEGINNING OF THE SOLID WHITE LINE. SPACE ADDITIONAL ARROWS EVENLY UP TO 80' (24.4 m) MAXIMUM SPACING. USE MINIMUM OF 2 ARROWS.

NOT TO SCALE
Note: All dimensions are in INCHES (millimeters) unless otherwise shown.

DISTRICT 7 DETAIL NO. 7800001

FILE NAME =	USER NAME = steffenmk	DESIGNED -	REVISED -
pw:\plnroom.dot.illinois.gov\PIDOT\Documents\IDOT Offices\District 7\Projects\74942\DRAWN\CADsheets\0774942-sht-details.dgn		CHECKED -	REVISED -
	PLOT SCALE = 100.0000' / in.	DATE -	REVISED -
	PLOT DATE = 4/6/2021		

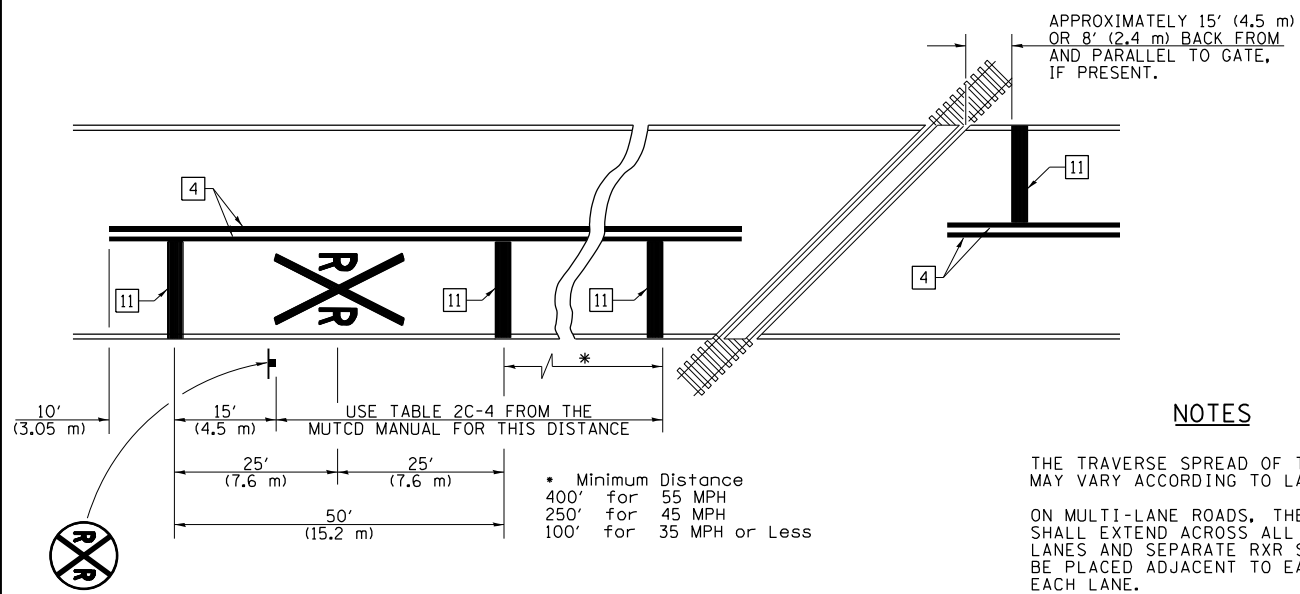
**STATE OF ILLINOIS
DEPARTMENT OF TRANSPORTATION**

**PAVEMENT MARKING AND RAISED REFLECTIVE PAVEMENT MARKERS
(RURAL & URBAN APPLICATIONS)**

SCALE: SHEET NO. 3 OF 4 SHEETS STA. TO STA.

F.A.S. RTE.	SECTION	COUNTY	TOTAL SHEETS	SHEET NO.
2703	9R5-2	CLAY	15	14
CONTRACT NO. 74942				
ILLINOIS FED. AID PROJECT				

PAVEMENT MARKINGS AT RAILROAD-HIGHWAY GRADE CROSSING



NOTES

THE TRAVERSE SPREAD OF THE "X" MAY VARY ACCORDING TO LANE WIDTH.

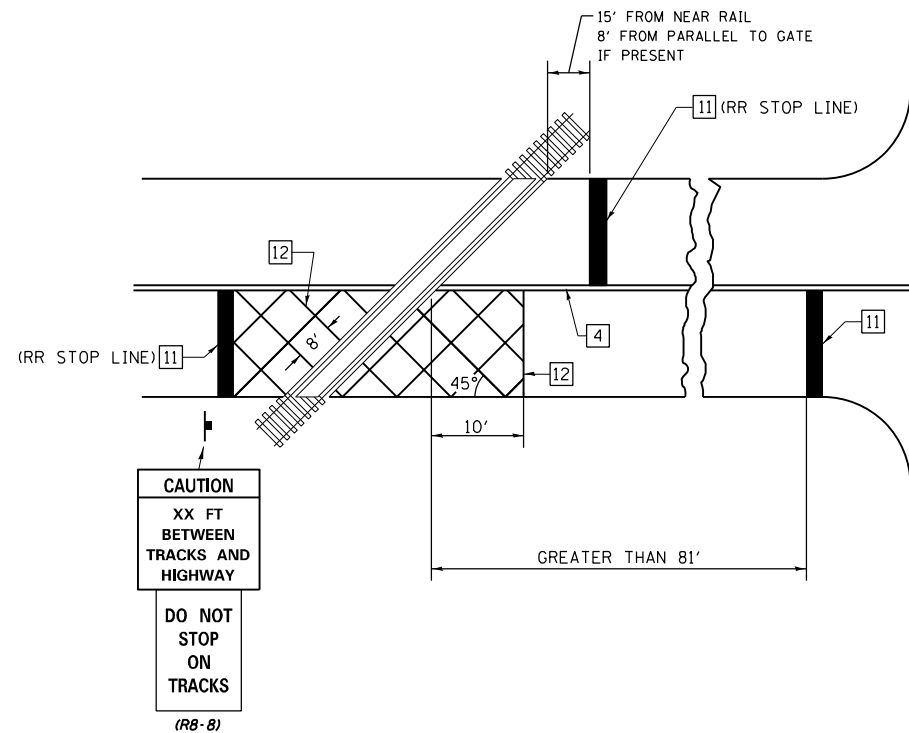
ON MULTI-LANE ROADS, THE STOP LINES SHALL EXTEND ACROSS ALL APPROACH LANES AND SEPARATE RXR SYMBOLS SHALL BE PLACED ADJACENT TO EACH OTHER IN EACH LANE.

WHEN THE PAVEMENT MARKING SYMBOL IS USED, A PORTION OF THE SYMBOL SHOULD BE LOCATED DIRECTLY ADJACENT TO THE ADVANCE WARNING SIGN (W10-1) AS PLACED BY TABLE II-1, CONDITION B OF THE MUTCD.

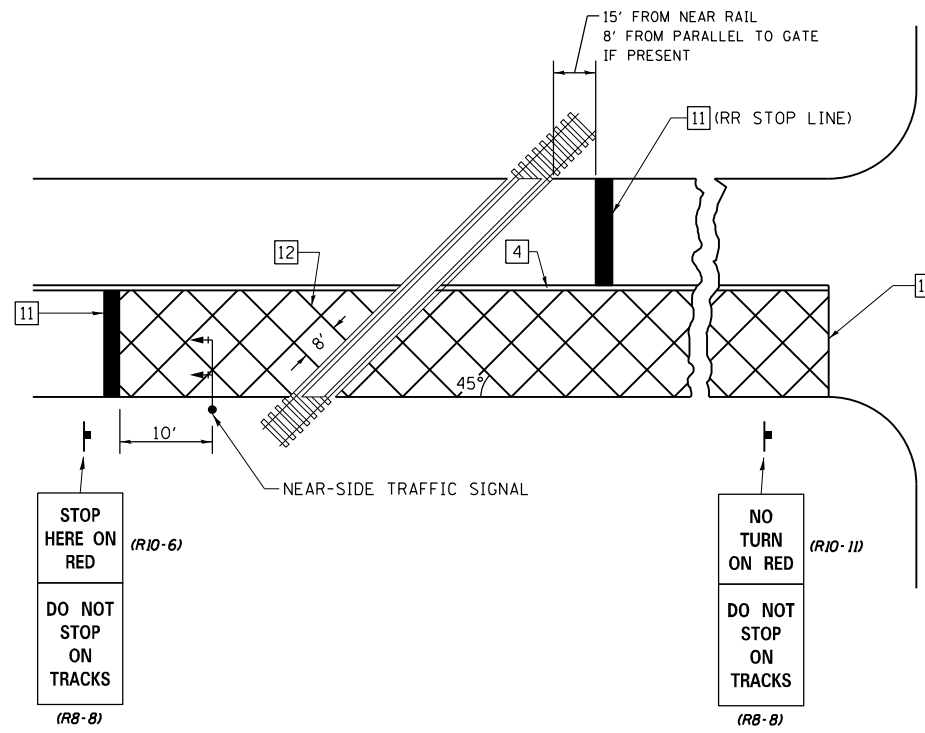
PAVEMENT MARKING LEGEND

- 1 4" (100) SKIP-DASH (YELLOW)
- 2 4" (100) SOLID (YELLOW)
- 3 12" (300) DIAGONAL (YELLOW)
- 4 4" (100) DOUBLE YELLOW (NARROW)
- 5 12" (300) SOLID WHITE
- 6 RESERVED
- 7 6" (150) SKIP-DASH (WHITE)
- 8 4" (100) SOLID (WHITE)
- 9 12" (300) DIAGONAL (WHITE)
- 10 6" (150) SOLID (WHITE)
- 11 24" (600) STOP BAR (WHITE)
- 12 8" (200) SOLID (WHITE)
- 13 4" (100) PARKING WHITE

RAILROAD CROSSING WITH INTERCONNECT ONLY



RAILROAD CROSSING WITH INTERCONNECT AND PRE-SIGNALS



GENERAL NOTES

- SUPPLEMENTAL PAVEMENT MARKINGS TO BE INSTALLED ONLY ON APPROACHES TO INTERSECTIONS CONTROLLED BY TRAFFIC SIGNALS WHICH ARE INTERCONNECTED WITH THE RAILROAD WARNING SIGNALS.
- EXTEND PAVEMENT MARKINGS TO THE INTERSECTION ONLY WHERE NEAR-SIDE TRAFFIC SIGNALS ARE USED.

SUPPLEMENTAL PAVEMENT MARKING TREATMENT FOR RAILROAD-HIGHWAY GRADE CROSSING

NOT TO SCALE

Note: All dimensions are in INCHES (millimeters) unless otherwise shown.

DISTRICT 7 DETAIL NO. 7800001

FILE NAME =	USER NAME = steffenmk	DESIGNED -	REVISED -	STATE OF ILLINOIS DEPARTMENT OF TRANSPORTATION	PAVEMENT MARKING AND RAISED REFLECTIVE PAVEMENT MARKERS (RURAL & URBAN APPLICATIONS)	F.A.S. RTE.	SECTION	COUNTY	TOTAL SHEETS	SHEET NO.
pw:\planroom.dot.illinois.gov\PIWIDOT\Documents\IDOT Offices\District 7\Projects\74942\DRAWN\CADsheets\0774942-sht-details.dgn	DESIGNED -	REVISED -	2703			9RS-2	CLAY	15	15	
PLOT SCALE = 100.0000' / in.	CHECKED -	REVISED -	CONTRACT NO. 74942							
PLOT DATE = 4/6/2021	DATE -	REVISED -	ILLINOIS FED. AID PROJECT							
					SCALE:	SHEET NO. 4 OF 4 SHEETS		STA. TO STA.		