

F.A. RTE.	SECTION	COUNTY	TOTAL SHEETS	SHEET NO.
VAR.	D9 GUARDRAIL REPAIR FY22-1	VARIOUS	20	1
		ILLINOIS	CONTRACT NO. 78868	

**STATE OF ILLINOIS
DEPARTMENT OF TRANSPORTATION**

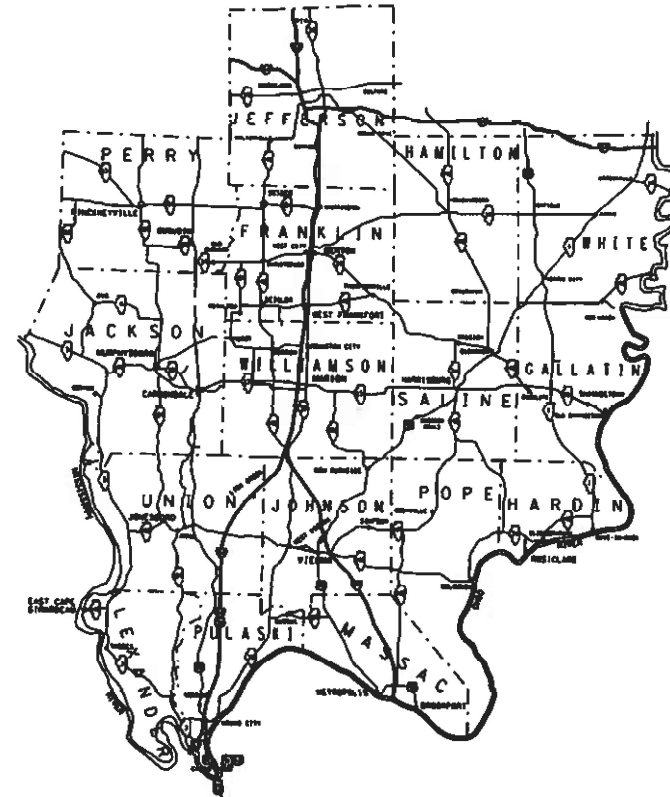
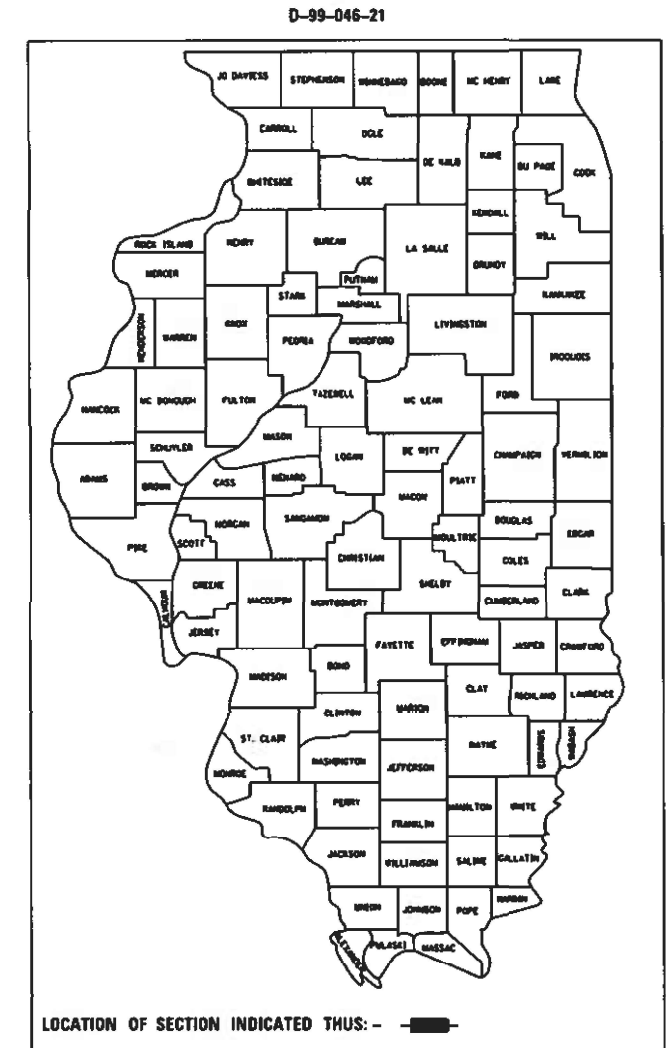
**PROPOSED
HIGHWAY PLANS**

**VARIOUS ROUTES
SECTION D9 GUARDRAIL REPAIR FY22-1**

**GUARDRAIL REPAIR
VARIOUS COUNTIES**

C-99-062-21

FOR INDEX OF SHEETS, SEE SHEET NO. 3
FOR SUMMARY OF QUANTITIES, SEE SHEET NO. 5



J.U.L.I.E.
JOINT UTILITY LOCATION INFORMATION FOR EXCAVATION
1-800-892-0123
OR 811

PROJECT ENGINEER : SUSAN POE
PROJECT DESIGNER : JOHN BROWN

CONTRACT NO. 78868

STATE OF ILLINOIS
DEPARTMENT OF TRANSPORTATION

SUBMITTED 03-04-2021

REGION FIVE ENGINEER

May 7, 2021

ENGINEER OF DESIGN AND ENVIRONMENT

May 7, 2021

DIRECTOR OF HIGHWAYS PROJECT IMPLEMENTATION 13

**PRINTED BY THE AUTHORITY
OF THE STATE OF ILLINOIS**

INDEX OF SHEETS

SHEET NO.	DESCRIPTION
1	COVER SHEET
2	SIGNATURE SHEET
3	INDEX OF SHEETS, STANDARDS
4	GENERAL NOTES
5 - 7	SUMMARY OF QUANTITIES
8 - 11	STEEL PLATE BEAM GUARDRAIL STANDARD INSTALLED PRIOR TO JANUARY 1, 2007
12 - 14	TRAFFIC BARRIER TERMINAL, TYPE 6 STANDARD INSTALLED PRIOR TO JANUARY 1, 2007
15 - 17	TRAFFIC BARRIER TERMINAL, TYPE 6A STANDARD INSTALLED PRIOR TO JANUARY 1, 2007
18 - 19	TRAFFIC BARRIER TERMINAL, TYPE 6B STANDARD INSTALLED PRIOR TO JANUARY 1, 2007
20	CRASH-CUSHION ATTENUATING TERMINAL (C-A-T)

LIST OF STANDARDS

000001-08	STANDARD SYMBOLS, ABBREVIATIONS AND PATTERNS
001006	DECIMAL OF AN INCH AND A FOOT
630001-12	STEEL PLATE BEAM GUARDRAIL
630006	NON-BLOCKED STEEL PLATE BEAM GUARDRAIL
630016	BACK SIDE PROTECTION OF GUARDRAIL
630101-10	STRONG POST GUARDRAIL ATTACHED TO CULVERT
630301-09	SHOULDER WIDENING FOR TYPE 1 (SPECIAL) GUARDRAIL TERMINALS
631011-10	TRAFFIC BARRIER TERMINAL, TYPE 2
631026-06	TRAFFIC BARRIER TERMINAL, TYPE 5
631031-17	TRAFFIC BARRIER TERMINAL, TYPE 6
631032-09	TRAFFIC BARRIER TERMINAL, TYPE 6A
631033-08	TRAFFIC BARRIER TERMINAL, TYPE 6B
635001-02	DELINEATORS
636001-02	CABLE ROAD GUARD SINGLE STRAND
643001-02	SAND MODULE IMPACT ATTENUATORS
664001-02	CHAIN LINK FENCE
665001-02	WOVEN WIRE FENCE
701001-02	OFF ROAD OPERATIONS, 2L, 2W, MORE THAN 15' AWAY
701006-05	OFF ROAD OPERATIONS, 2L, 2W, 15' TO 24" FROM PAVEMENT EDGE
701011-04	OFF ROAD OPERATIONS, 2L, 2W, DAY ONLY

LIST OF STANDARDS

701101-05	OFF ROAD OPERATIONS, MULTILANE, 15' TO 24" FROM PAVEMENT EDGE
701106-02	OFF ROAD OPERATIONS, MULTILANE, MORE THAN 15' AWAY
701201-05	LANE CLOSURE, 2L, 2W, DAY ONLY FOR SPEEDS GREATER OR EQUAL TO 45 MPH
701301-04	LANE CLOSURE, 2L, 2W, SHORT TERM OPERATIONS
701400-10	APPROACH TO LANE CLOSURE, FREEWAY/EXPRESSWAY
701401-12	LANE CLOSURE, FREEWAY/EXPRESSWAY
701406-12	LANE CLOSURE, FREEWAY/EXPRESSWAY, DAY OPERATIONS ONLY
701421-08	LANE CLOSURE, MULTILANE, DAY OPERATIONS ONLY FOR SPEEDS GREATER OR EQUAL TO 45 MPH
701422-10	LANE CLOSURE, MULTILANE, FOR SPEEDS GREATER THAN OR EQUAL TO 45 MPH TO 55 MPH
701428-01	TRAFFIC CONTROL SETUP AND REMOVAL FREEWAY/EXPRESSWAY
701456-05	PARTIAL EXIT RMAP CLOSURE FREEWAY/EXPRESSWAY
701501-06	URBAN LANE CLOSURE, 2L, 2W, UNDIVIDED
701502-09	URBAN LANE CLOSURE, 2L, 2W, WITH BIDIRECTIONAL LEFT TURN LANE
701601-09	URBAN LANE CLOSURE, MULTILANE, 1W AND 2W WITH NONTRAVERSABLE MEDIAN
701602-10	URBAN LANE CLOSURE, MULTILANE, 2W WITH BIDIRECTIONAL LEFT TURN LANE
701606-10	URBAN SINGLE LANE CLOSURE, MULTILANE, 2W WITH MOUNTABLE MEDIAN
701701-10	URBAN LANE CLOSURE, MULTILANE INTERSECTION
701901-08	TRAFFIC CONTROL DEVICE
725001-01	OBJECT AND TERMINAL MARKERS
782006-01	GUARDRAIL AND BARRIER WALL REFLECTOR MOUNTING DETAILS

FILE NAME :	USER NAME :	DESIGNED :	REVISED :	STATE OF ILLINOIS DEPARTMENT OF TRANSPORTATION	INDEX OF SHEETS & LIST OF STANDARDS				F.A. RTE.	SECTION	COUNTY	TOTAL SHEETS	SHEET NO.
p:\planroom.dot\illinois.gov\IDOT\Documents\IDOT Offices\District 9\Projects\Geometrics\BANDS\Geometrics\guardrail.dgn									VAR.	D9 GUARDRAIL REPAIR FY22-1	VARIOUS	20	3
Default	PLOT SCALE = 100.0000' / 1in.	CHECKED :	REVISED :		CONTRACT NO. 78868								
	PLOT DATE = 2/18/2021	DATE :	REVISED :		SCALE:	SHEET	OF	SHEETS	STA.	TO	STA.	ILLINOIS FED. AID PROJECT	

GENERAL NOTES

BEFORE ORDERING THE IMPACT ATTENUATORS, THE CONTRACTOR MUST CONTACT THE RESIDENT ENGINEER TO RECEIVE APPROVAL OF THE PROPOSED INSTALLATION.

ALL WORK IS TO BE REPLACED IN KIND OR AS INDICATED ON THE CONTRACT PLANS OR SPECIAL PROVISIONS.

THE LOCATIONS OF THE REPAIR AREAS SHALL BE DETERMINED BY THE ENGINEER.

GUARDRAIL WORK WILL INCLUDE ALIGNMENT AS NECESSARY TO RESTORE THE RAIL TO THE ORIGINAL CONDITIONS.

REMOVAL OF DAMAGED MATERIALS WILL INCLUDE DISMANTLING, LOADING, HAULING AND DISPOSAL. THE WORK SITE WILL BE LEFT IN A SAFE AND ORDERLY CONDITION.

THE LIMITS OF THE DAMAGED GUARDRAIL WILL BE MARKED WITH PAINT. THE REPLACEMENT PARTS AND THE QUANTITIES INDICATED ARE WITHIN THESE LIMITS AS MARKED.

REMOVED GUARDRAIL THAT IS NOT REPLACED ON THE SAME DAY MUST BE DELINEATED WITH LIGHTED BARRICADES. NO LOCATIONS WILL BE LEFT WITHOUT EITHER LIGHTED BARRICADES OR RESTORED GUARDRAIL AT ANY TIME.

ILLINOIS STATE LAW ENFORCES A 48-HOUR NOTICE TO BE GIVEN TO UTILITIES BEFORE DIGGING. FIELD MARKING OF FACILITIES MAY BE OBTAINED BY CONTACTING J.U.L.I.E. (PHONE: 800 892-0123) OR FOR NON-MEMBER, THE UTILITY COMPANY DIRECTLY.

THE CONTRACTOR SHALL BE ADVISED THAT THE GUARDRAIL PAY ITEMS INCLUDED IN THE PLANS MAY BE USED TO REPLACE/REPAIR SPBGR AND TRAFFIC BARRIER TERMINALS FOR THE NEW MIDWEST STANDARD AS SHOWN ON THE HIGHWAY STANDARDS AS WELL AS SPBGR AND TRAFFIC BARRIER TERMINAL INSTALLED PRIOR TO JAN. 1, 2007 AS SHOWN IN THE PLAN DETAILS. NO ADDITIONAL COMPENSATION WILL BE ALLOWED FOR UTILIZING THE CURRENT MIDWEST STANDARDS.

COMMITMENTS

NONE

FILE NAME =	USER NAME = poesi	DESIGNED -	REVISED -	STATE OF ILLINOIS DEPARTMENT OF TRANSPORTATION	GENERAL NOTES & COMMITMENTS	F.A. RTE.	SECTION	COUNTY	TOTAL SHEETS	SHEET NO.	
pwi\planroom.dot,illinois.gov\PIDOT\Documents\IDOT Offices\District 9\Projects\Geometrics\BANDS\Geometrics\guardrail.dgn		CHECKED -	REVISED -			VAR.	D9 GUARDRAIL REPAIR FY22-1	VARIOUS	20	4	
Default	PLOT SCALE = 100.0000' / 1in.	DATE -	REVISED -			CONTRACT NO. 78868					
	PLOT DATE = 2/18/2021					SCALE:	SHEET	OF	SHEETS	STA.	TO STA.

SUMMARY OF QUANTITIES

COUNTY:	COUNTY:	VARIOUS	VARIOUS	VARIOUS
ROUTE:	ROUTE:	VARIOUS	VARIOUS	VARIOUS
FUNDING:	FUNDING:	100% STATE	100% STATE	100% STATE
LOCATION:	LOCATION:	RURAL	RURAL	RURAL
	TOTAL QUANTITY	MCHD 0021	HIT AND RUN 0021	HIGH TENSION CABLE 0021

CODE NUMBER	ITEM DESCRIPTION	UNIT	TOTAL QUANTITY	MCHD 0021	HIT AND RUN 0021	HIGH TENSION CABLE 0021
25000100	SEEDING, CLASS 1	ACRE	10	5	3	2
63100167	TRAFFIC BARRIER TERMINAL, TYPE 1 (SPECIAL) TANGENT	EACH	97	80	17	
63100169	TRAFFIC BARRIER TERMINAL, TYPE 1 (SPECIAL) FLARED	EACH	11	8	3	
64300260	IMPACT ATTENUATORS (FULLY REDIRECTIVE, NARROW), TEST LEVEL 3	EACH	6	4	2	
64401300	HIGH TENSION CABLE MEDIAN BARRIER TERMINALS	EACH	13	5	5	3
67100100	MOBILIZATION	L SUM	1	1	0	0
X0325899	REPAIR HIGH TENSION CABLE (GIBRALTAR)	FOOT	400	166	125	109
X0325900	REPAIR HIGH TENSION BARRIER TERMINAL (GIBRALTAR)	EACH	13	6	3	4
X0325902	REMOVE AND REPLACE POSTS (GIBRALTAR)	EACH	156	31	25	100
X0326201	REPAIR HIGH TENSION CABLE (TRINITY)	FOOT	390	166	125	99
X0326202	REPAIR POSTS (TRINITY)	EACH	68	31	25	12
X0326203	REPAIR HIGH TENSION CABLE SYSTEM END SECTION (TRINITY)	EACH	12	6	3	3

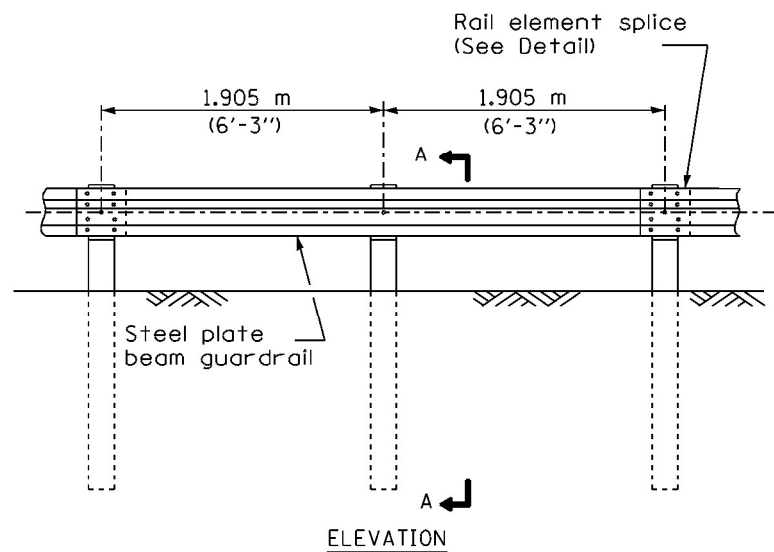
REV. - MS

SUMMARY OF QUANTITIES - CONT

COUNTY:	COUNTY:	VARIOUS	VARIOUS	VARIOUS
ROUTE:	ROUTE:	VARIOUS	VARIOUS	VARIOUS
FUNDING:	FUNDING:	100% STATE	100% STATE	100% STATE
LOCATION:	LOCATION:	RURAL	RURAL	RURAL

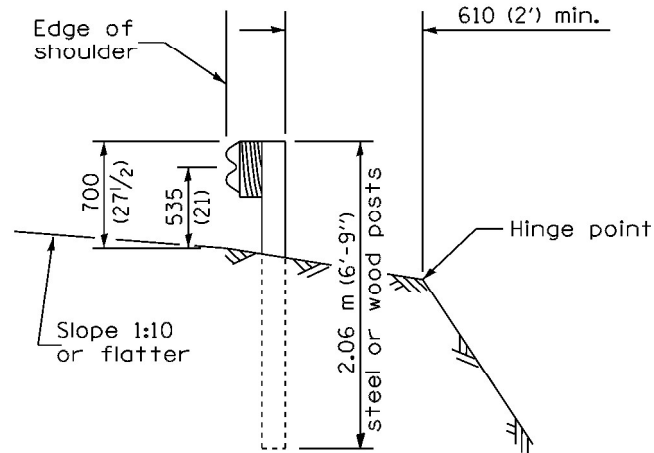
CODE NUMBER	ITEM DESCRIPTION	UNIT	TOTAL QUANTITY	MCHD 0021	HIT AND RUN 0021	HIGH TENSION CABLE 0021
X6300210	GUARDRAIL BLOCKS	EACH	400	300	100	
X6300215	RAIL ELEMENT PLATES	EACH	239	226	13	
X6300217	RAIL ELEMENT PLATES (RADIUS)	EACH	12	9	3	
X6300220	EXTRUDER HEAD	EACH	7	4	3	
X6300230	STEEL POSTS	EACH	244	231	13	
X6300231	STEEL POST, ATTACHED TO STRUCTURES	EACH	3	3		
X6300235	WOOD POSTS	EACH	31	16	15	
X6310088	TRAFFIC BARRIER TERMINAL TYPE 6A (SPECIAL)	EACH	5	5		
X6310176	TRAFFIC BARRIER TERMINAL, TYPE 2 (SPECIAL)	EACH	6	6		
X6310214	TRAFFIC BARRIER TERMINAL, TYPE 6 (SPECIAL)	EACH	6	6		
X6311215	TRAFFIC BARRIER TERMINAL (C-A-T)	EACH	8	5	3	
X6311217	TRAFFIC BARRIER TERMINAL, TYPE 6B (SPECIAL)	EACH	6	6		

REV. - MS

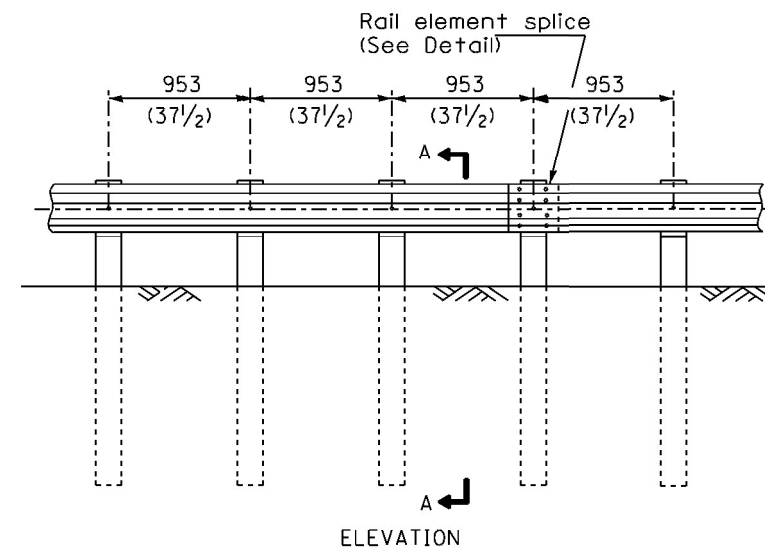


TYPE A

1.905 m (6'-3") Typical post spacing

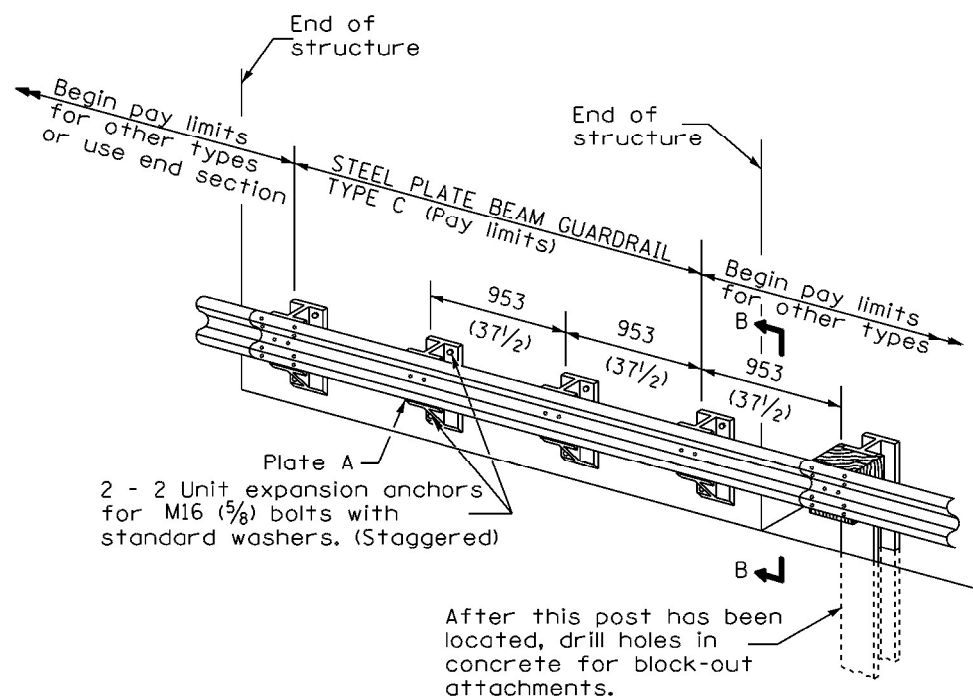


SECTION A-A



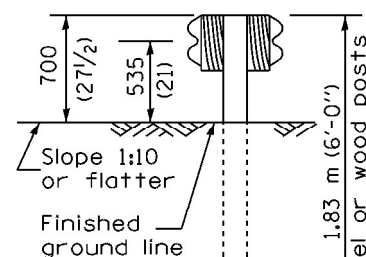
TYPE B

953 (37 1/2) Closed post spacing

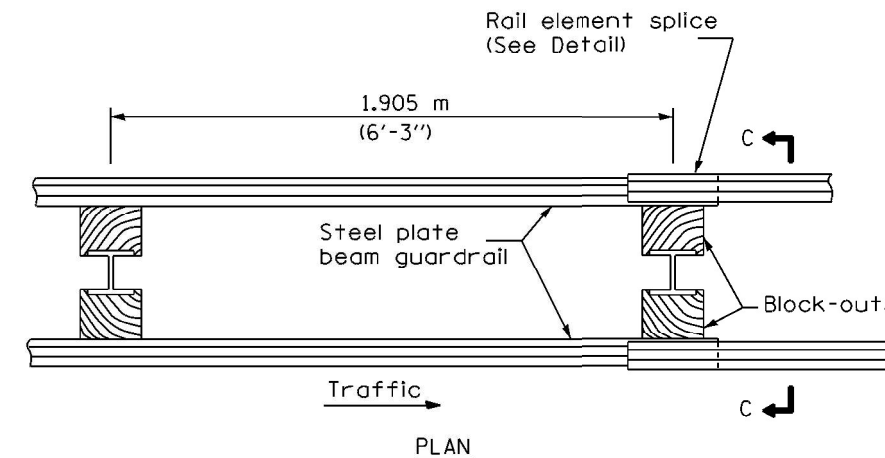


TYPE C

953 (37 1/2) Block-out spacing

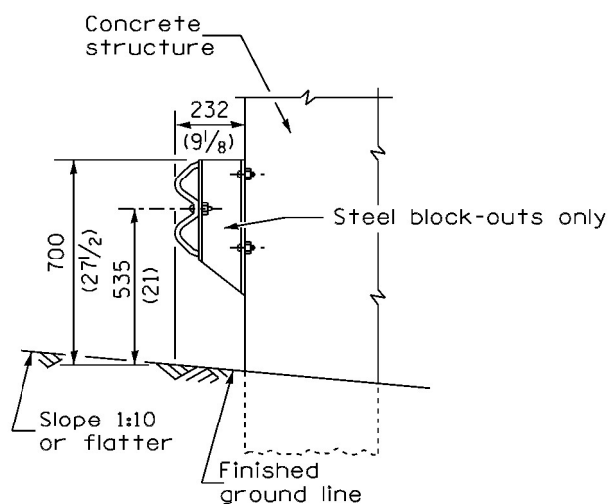


SECTION C-C



TYPE D

Double steel plate beam guardrail
1.905 m (6'-3") typical post spacing



SECTION B-B

THIS DETAIL IS APPLICABLE TO THE GUARDRAIL
INSTALLED PRIOR TO JANUARY 1, 2007.

GENERAL NOTES

All slope ratios are expressed as units of vertical displacement to units of horizontal displacement (V:H).

All dimensions are in millimeters (inches) unless otherwise shown.

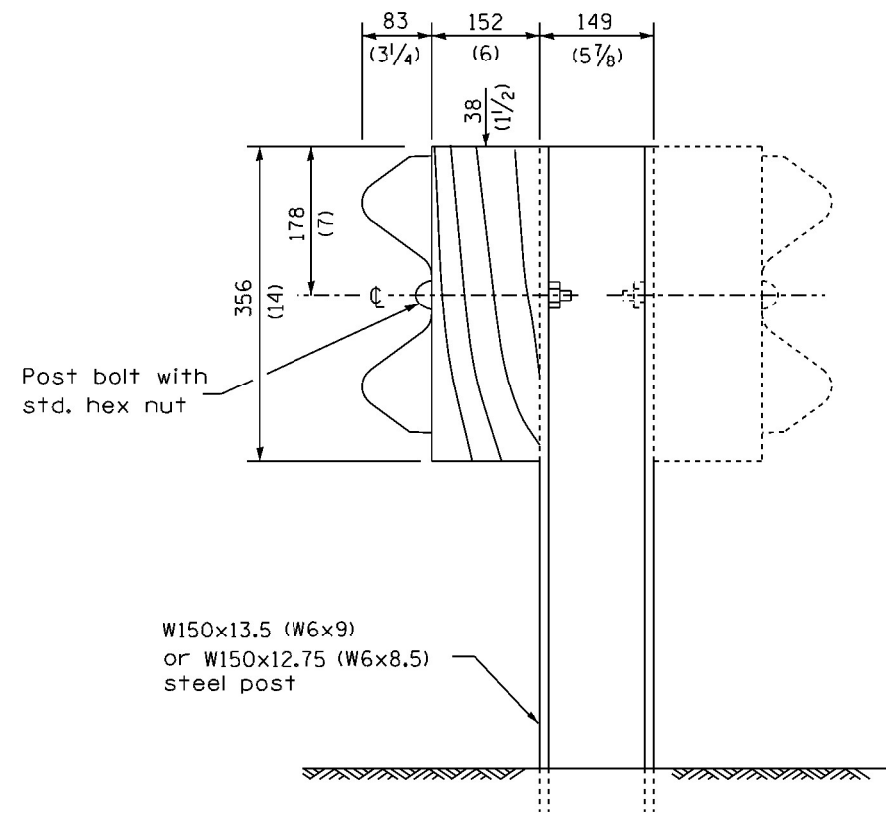
DATE	REVISIONS
4-1-06	Deleted plate washer F.
1-1-05	Rev. post in impervious material on sheet 4.

STEEL PLATE BEAM GUARDRAIL

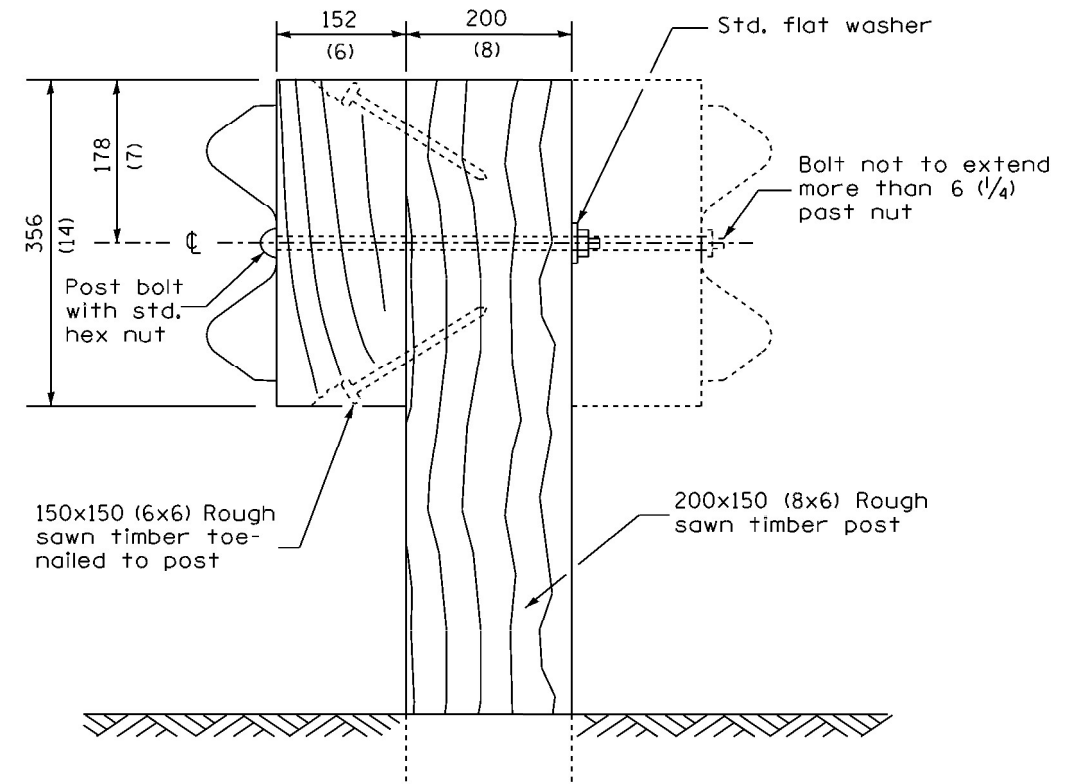
(Sheet 1 of 4)

STANDARD 630001-06

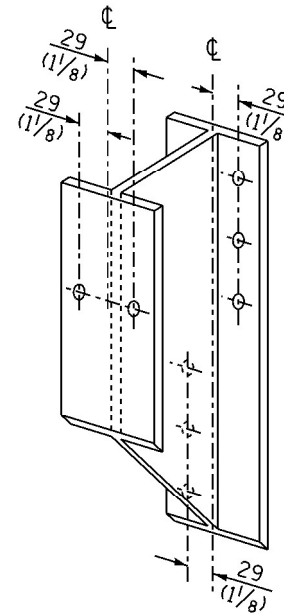
FILE NAME =	USER NAME = poesi	DESIGNED -	REVISOR -	STATE OF ILLINOIS DEPARTMENT OF TRANSPORTATION	STEEL PLATE BEAM GUARDRAIL STANDARD INSTALLED PRIOR TO JANUARY 1, 2007				F.A. RTÉ.	SECTION	COUNTY	TOTAL SHEETS	SHEET NO.
pw\planroom.dot.illinois.gov\PIDOT\Documents\DOT Offices\District 9\Projects\Geometric\DOTtoGeometric\guardrail.dgn		CHECKED -	REVISOR -		VAR.	D9 GUARDRAIL REPAIR FY22-1	VARIOUS	20	8				
Default	PLOT SCALE = 26.0000 / in.	DATE -	REVISOR -		CONTRACT NO. 78868				ILLINOIS FED. AID PROJECT				
	PLOT DATE = 2/11/2021				SCALE:	SHEET	OF SHEETS	STA.	TO STA.				



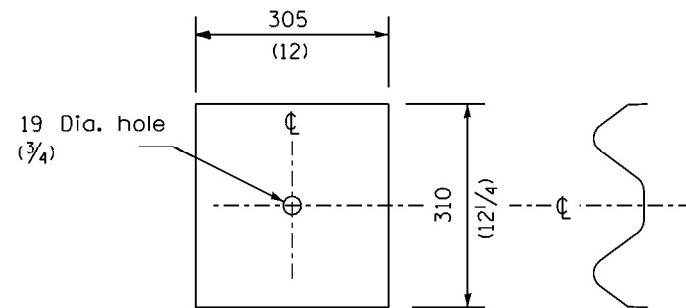
STEEL POST CONSTRUCTION



WOOD POST CONSTRUCTION



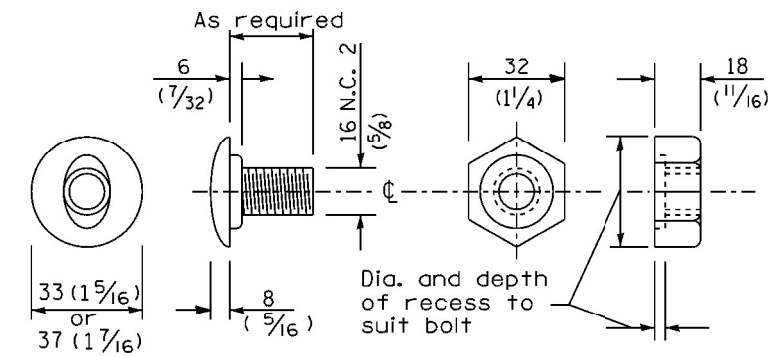
STEEL BLOCK-OUT DETAIL



NOTE

Plate A shall be placed between rail element and block-out at non-splice mounting points only when steel block-outs are used.

PLATE A



POST OR SPLICE BOLT & NUT

THIS DETAIL IS APPLICABLE TO THE GUARDRAIL INSTALLED PRIOR TO JANUARY 1, 2007.

STEEL PLATE BEAM GUARDRAIL
(Sheet 2 of 4)

STANDARD 630001-06

FILE NAME =	USER NAME = pcesl	DESIGNED -	REVISED -
p:\planroom.dot\illinois.gov\PIDOT\Documents\IDOT Offices\District 9\Projects\Geometrics\BAND\to\Geometrics\guardrail.dgn		DEAN	REVISD -
Default	PLOT SCALE = 26.0000' / in.	CHECKED -	REVISED -
	PLOT DATE = 2/11/2021	DATE -	REVISED -

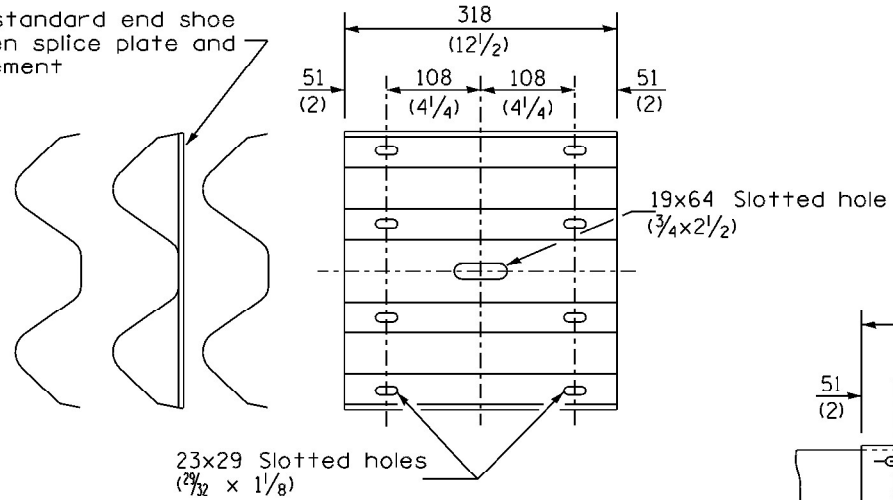
**STATE OF ILLINOIS
DEPARTMENT OF TRANSPORTATION**

**STEEL PLATE BEAM GUARDRAIL STANDARD
INSTALLED PRIOR TO JANUARY 1, 2007**

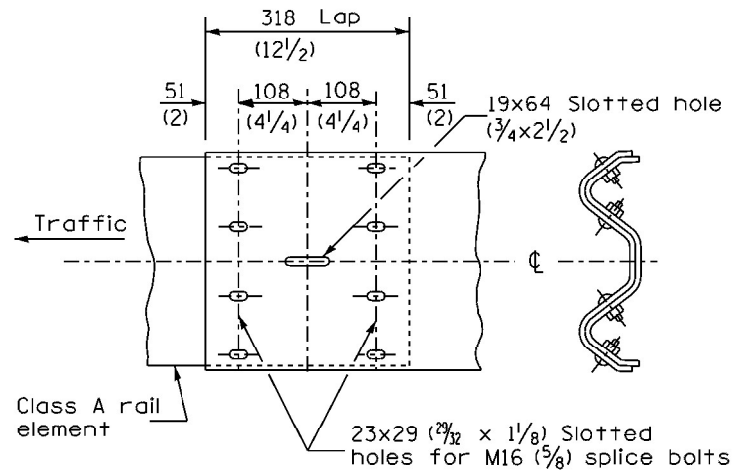
SCALE: SHEET OF SHEETS STA. TO STA.

F.A. RTE.	SECTION	COUNTY	TOTAL SHEETS	SHEET NO.
VAR.	D9 GUARDRAIL REPAIR FY22-1	VARIOUS	20	9
			CONTRACT NO. 78868	
ILLINOIS FED. AID PROJECT				

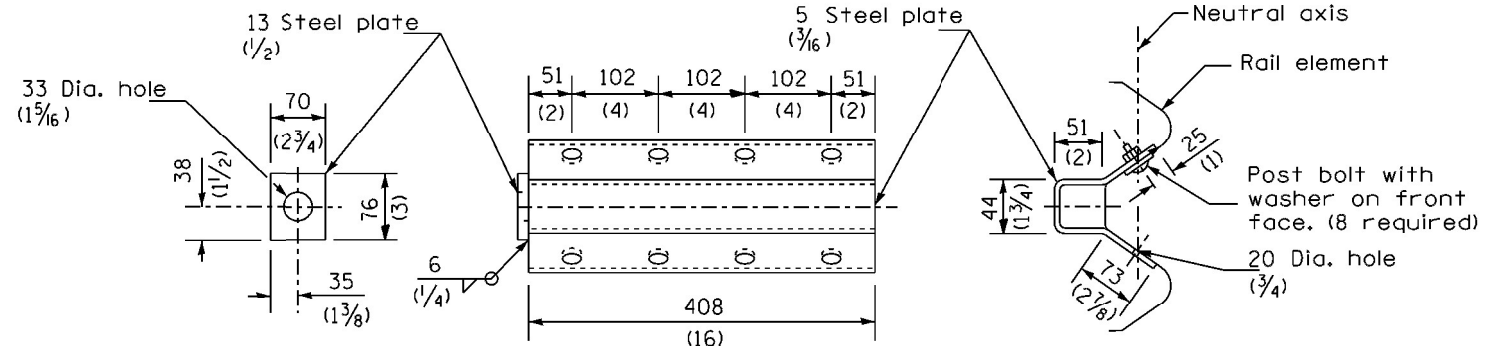
Place standard end shoe between splice plate and rail element



SPLICE PLATE

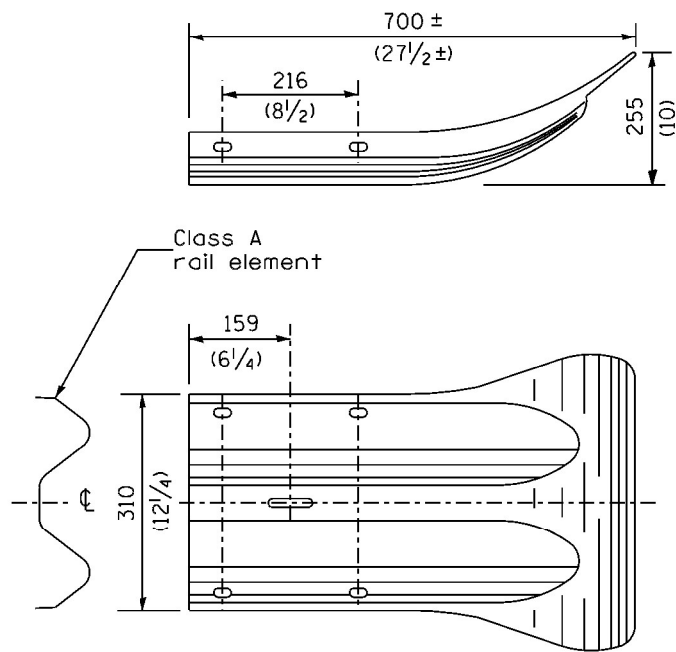


RAIL ELEMENT SPLICE

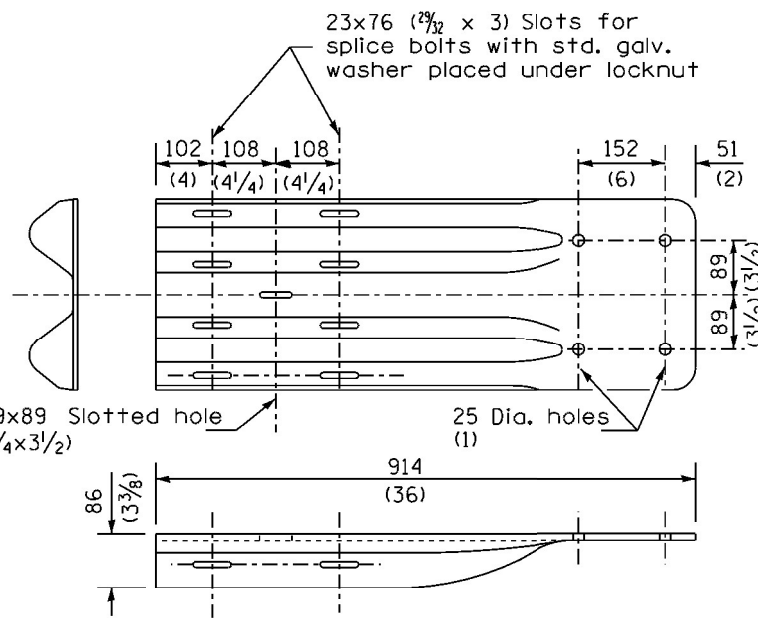


NOTE
Anchor plate T shall be used to attach cable assembly to guardrail when required on traffic barrier terminals.

ANCHOR PLATE T DETAILS



END SECTION



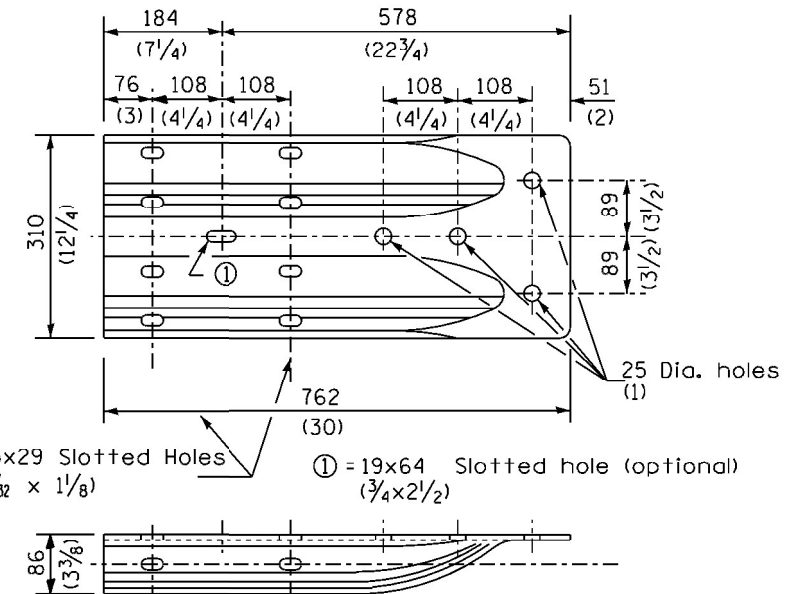
NOTE

When end shoe is attached to a bridge parapet which has an expansion joint, the bolts shall be provided with a locknut or double nut and shall be tightened only to a point that will allow guardrail movement.

The standard end shoe shall be attached to the concrete with pre-drilled or self-drilling anchor bolts. The anchor cone shall be set flush with the surface of the concrete.

Externally threaded studs protruding from the surface of the concrete will not be permitted.

END SHOE



ALTERNATE END SHOE

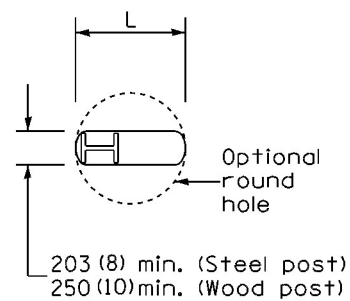
THIS DETAIL IS APPLICABLE TO THE GUARDRAIL INSTALLED PRIOR TO JANUARY 1, 2007.

STEEL PLATE BEAM GUARDRAIL

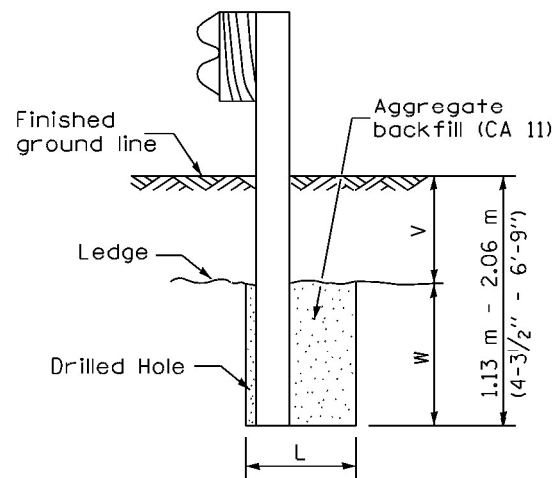
(Sheet 3 of 4)

STANDARD 630001-06

FILE NAME : pwi\planroom.dot\illinois.gov\PWIDOT\Documents\IDOT Offices\District 9\Projects\Geometrics\Bentley\Geometrics\guardrail.dgn	USER NAME : poesi	DESIGNED -	REVISED -	STATE OF ILLINOIS DEPARTMENT OF TRANSPORTATION	STEEL PLATE BEAM GUARDRAIL STANDARD INSTALLED PRIOR TO JANUARY 1, 2007	F.A. RTE.	SECTION	COUNTY	TOTAL SHEETS	SHEET NO.
PLOT SCALE = 26.0000 / in.	CHECKED -	REVISED -	VAR.			D9 GUARDRAIL REPAIR FY22-1	VARIOUS	20	10	
Default	DATE -	REVISED -	CONTRACT NO. 78868							
PLOT DATE = 2/11/2021	DATE -	REVISED -	ILLINOIS FED. AID PROJECT							



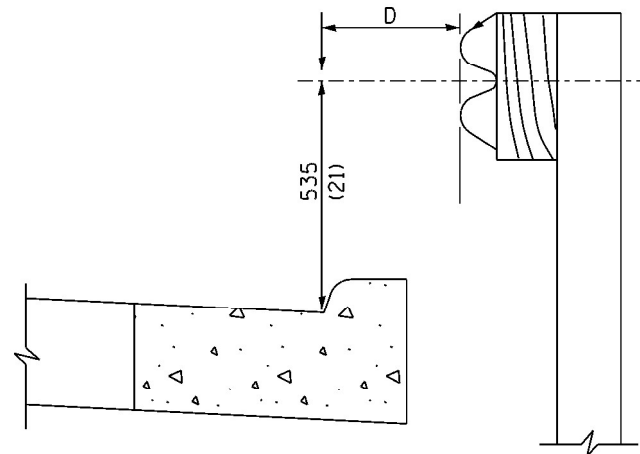
PLAN



Note:
Ledge line is top of rock ledge or hard slag fill.

ELEVATION

FOOTING FOR POST WHEN IMPERVIOUS MATERIAL IS ENCOUNTERED

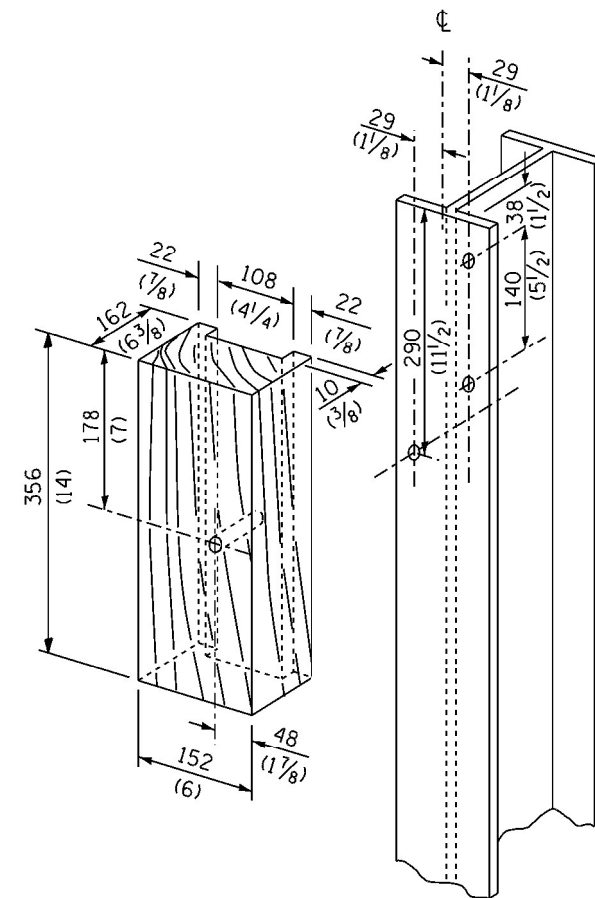


Note:
If it is necessary for D to be more than 300 (12) and less than 3.0 m (10'-0") type M-5 (M-2) curb and gutter (Std. 606001) shall be used in front of and in advance of the guardrail.

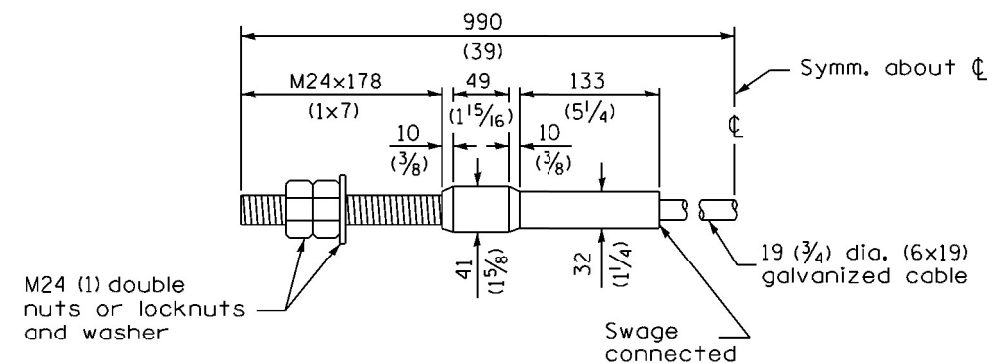
GUARDRAIL PLACED BEHIND CURB

(D = 0 desirable to 300 (12) maximum)

V	W	L	
		Steel Post	Wood Post
0 - 460 (0 - 18)	610 (24)	530 (21)	580 (23)
>460 - 825 (>18 - 41.5)	305 (12)	203 (8)	250 (10)
>825 - 1.13 m (>41.5 - 53.5)	305 - 0 (12 - 0)	203 (8)	250 (10)



WOOD BLOCK-OUT AND STEEL POST DETAILS



CABLE ASSEMBLY

(18,100 kg (40,000 lbs.) min. breaking strength)
Tighten to taut tension.

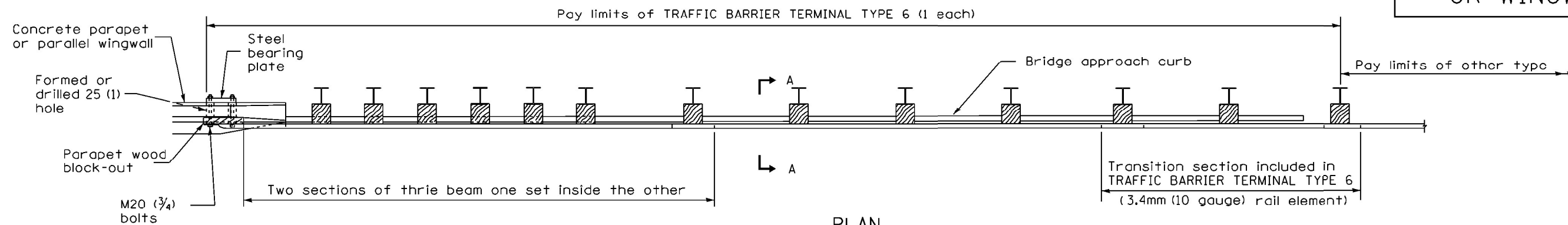
STEEL PLATE BEAM GUARDRAIL

(Sheet 4 of 4)

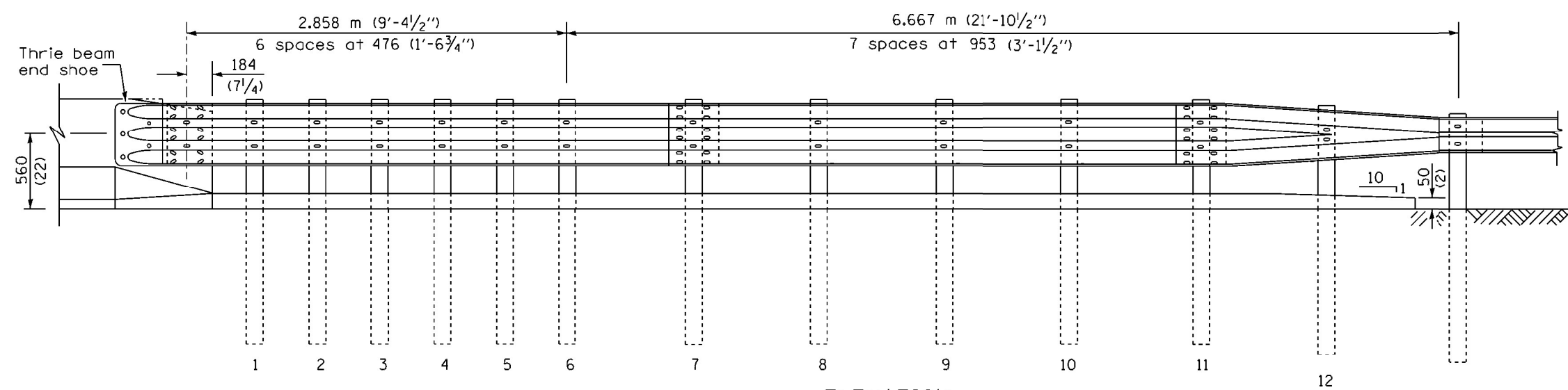
STANDARD 630001-06

THIS DETAIL IS APPLICABLE TO THE GUARDRAIL
INSTALLED PRIOR TO JANUARY 1, 2007.

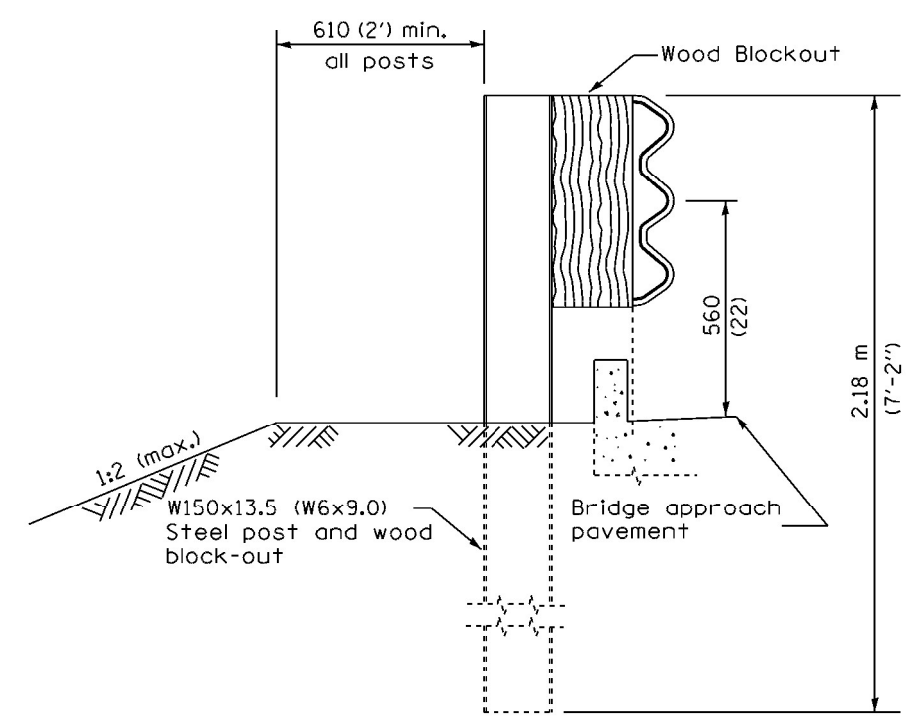
PARAPET OR WINGWALL



PLAN



ELEVATION



SECTION A-A

GENERAL NOTES

- See Standard 630001 for details of guardrail not shown.
- Thrie beam rail shall be bolted to block-out at all posts.
- See Standard 420401 for details of bridge approach pavement.
- All slope ratios are expressed as units of vertical displacement to units of horizontal displacement (V:H).
- All dimensions are in millimeters (inches) unless otherwise shown.

THIS DETAIL IS APPLICABLE TO THE GUARDRAIL INSTALLED PRIOR TO JANUARY 1, 2007.

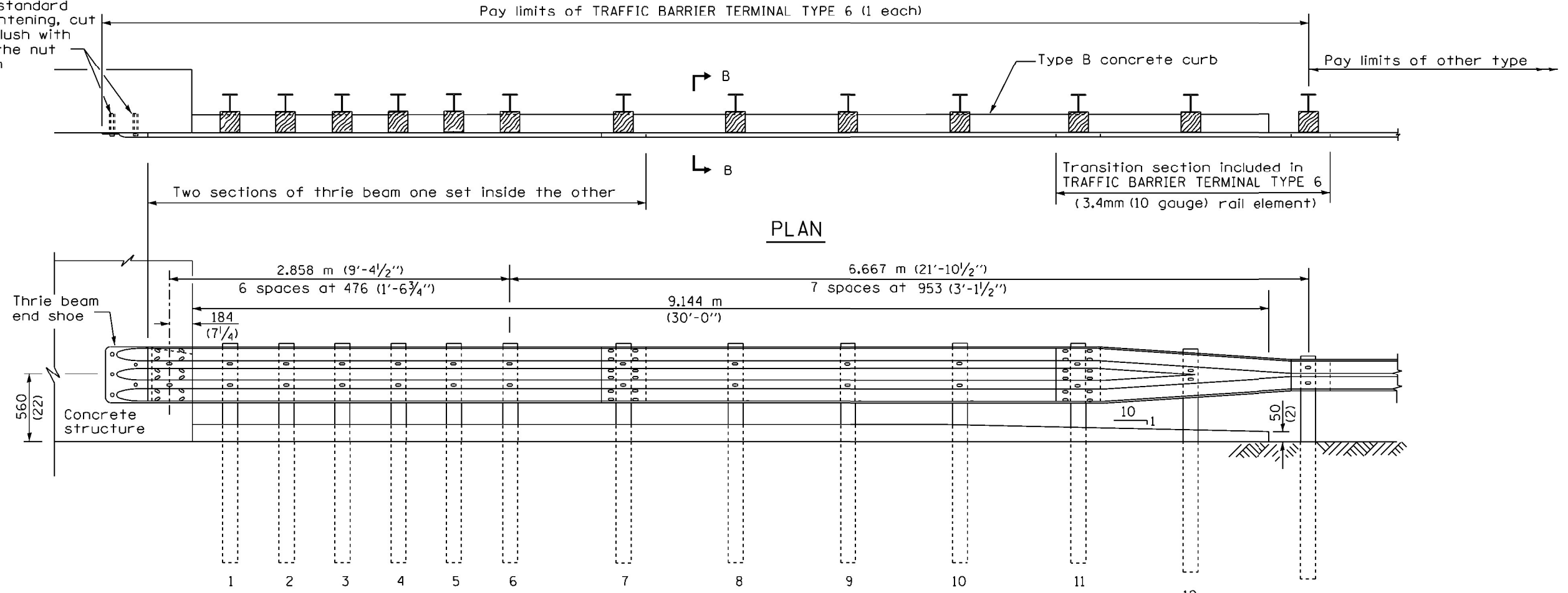
TRAFFIC BARRIER TERMINAL, TYPE 6

Sheet 1 of 3

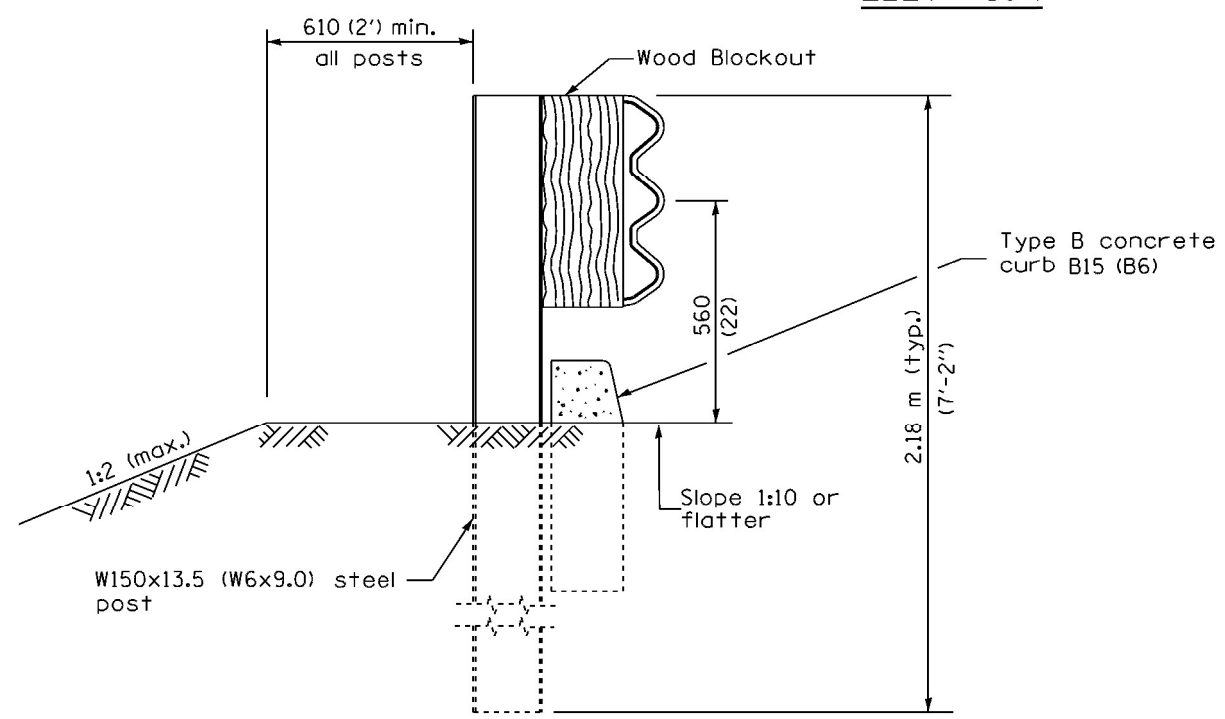
STANDARD 631031-05

FILE NAME =	USER NAME = poesi	DESIGNED -	REVISED -	STATE OF ILLINOIS DEPARTMENT OF TRANSPORTATION	TRAFFIC BARRIER TERMINAL, TYPE 6 STANDARD INSTALLED PRIOR TO JANUARY 1, 2007	F.A. RTE.	SECTION	COUNTY	TOTAL SHEETS	SHEET NO.	
pw\planroom.dot,illinois.gov\PWIDOT\Documents\IDOT Offices\District 9\Projects\Geometrics\BAND\to\Geometrics\guardrail.dgn		CHECKED -	REVISED -			VAR.	D9 GUARDRAIL REPAIR FY22-1	VARIOUS	20	12	
PLOT SCALE = 26.0000' / in.		DATE -	REVISED -			CONTRACT NO. 78868		ILLINOIS FED. AID PROJECT			
Default						SCALE:	SHEET	OF	SHEETS	STA.	TO

5 Epoxy grouted M20 (¾") anchor bolts with standard washers. After tightening, cut the anchor bolts flush with nuts, and damage the nut to prevent it from loosening.



ELEVATION



SECTION B-B

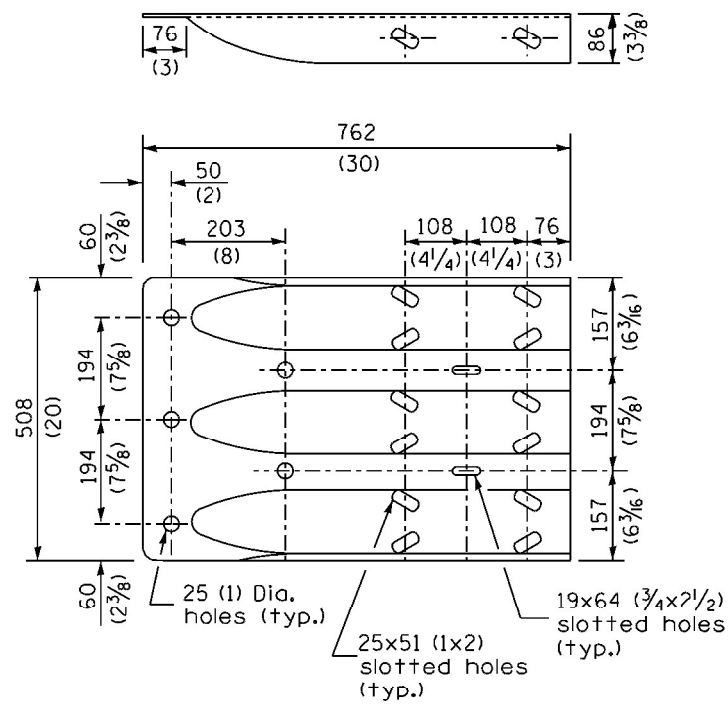
THIS DETAIL IS APPLICABLE TO THE GUARDRAIL INSTALLED PRIOR TO JANUARY 1, 2007.

TRAFFIC BARRIER TERMINAL, TYPE 6

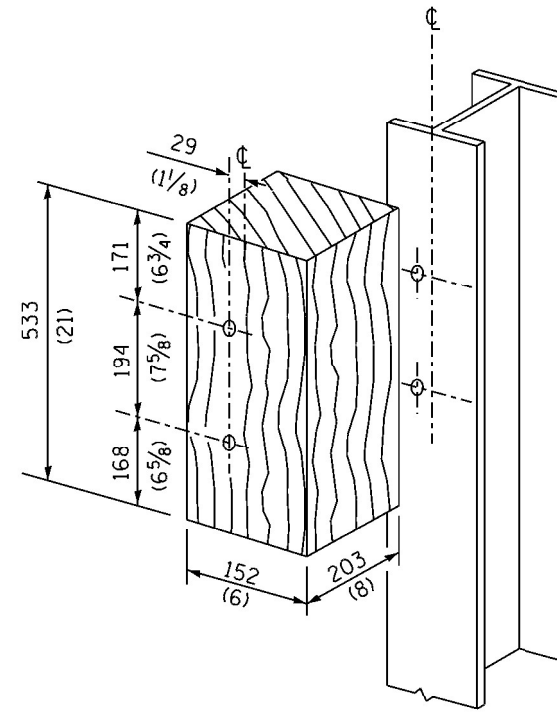
Sheet 2 of 3

STANDARD 631031-05

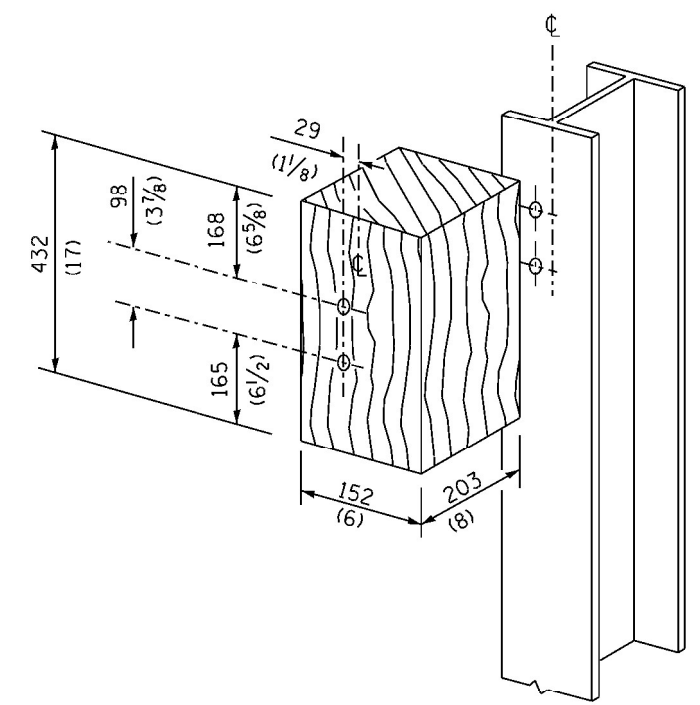
FILE NAME :	USER NAME = poesi	DESIGNED -	REVISED -	STATE OF ILLINOIS DEPARTMENT OF TRANSPORTATION	TRAFFIC BARRIER TERMINAL, TYPE 6 STANDARD INSTALLED PRIOR TO JANUARY 1, 2007	F.A. RTÉ.	SECTION	COUNTY	TOTAL SHEETS	SHEET NO.	
pw\planroom.dot.illinois.gov\PIWIDOT\Documents\DOT Offices\District 9\Projects\Geometrics\BANDS\Geometrics\guardrail.dgn		CHECKED -	REVISED -			VAR.	D9 GUARDRAIL REPAIR FY22-1	VARIOUS	20	13	
PLOT SCALE = 26.0000' / in.		DATE -	REVISED -			CONTRACT NO. 78868					
Default						ILLINOIS FED. AID PROJECT					



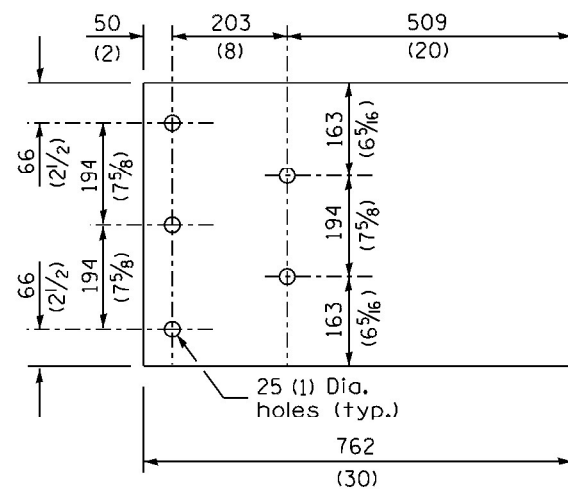
THRIE BEAM END SHOE DETAIL



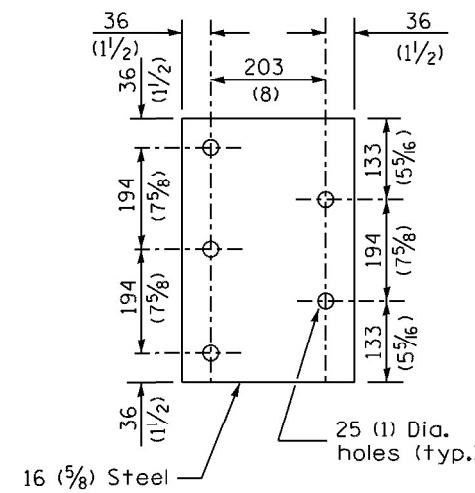
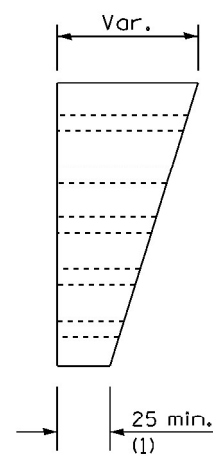
POSTS 1-11 WOOD BLOCKOUT DETAIL



POST 12 WOOD BLOCKOUT DETAIL



PARAPET WOOD BLOCK-OUT DETAIL



PARAPET STEEL BEARING PLATE DETAIL

(5 each individual 125x125x16 (5x5x5/8) steel plates with centered 25 (1) holes may be substituted for the plate shown.)

THIS DETAIL IS APPLICABLE TO THE GUARDRAIL
INSTALLED PRIOR TO JANUARY 1, 2007.

**TRAFFIC BARRIER
TERMINAL, TYPE 6**

Sheet 3 of 3

STANDARD 631031-05

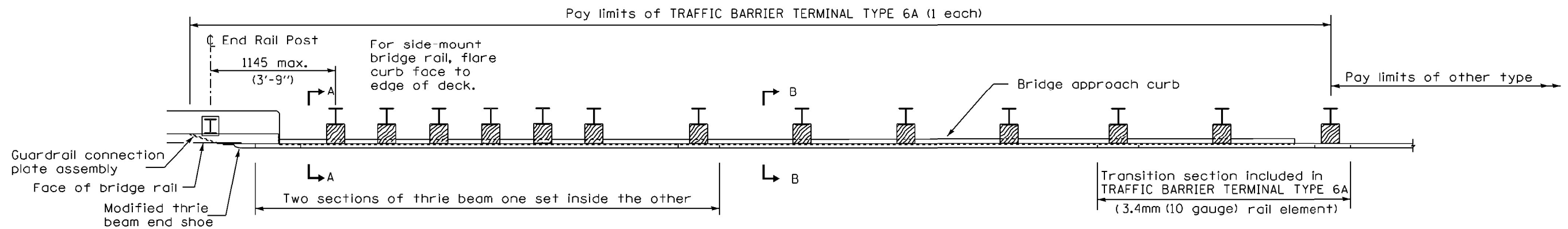
FILE NAME =	USER NAME = poesi	DESIGNED -	REVISED -
pwi\planroom.dot.illinois.gov\PWIDOT\Documents\DOT Offices\District 9\Projects\Geometrics\BANDto\Geometrics\guardrail.dgn		REVISOR -	REVISION -
PLOT SCALE = 26.0000 / in.	CHECKED -	REVISOR -	REVISION -
PLOT DATE = 2/11/2021	DATE -	REVISOR -	REVISION -

**STATE OF ILLINOIS
DEPARTMENT OF TRANSPORTATION**

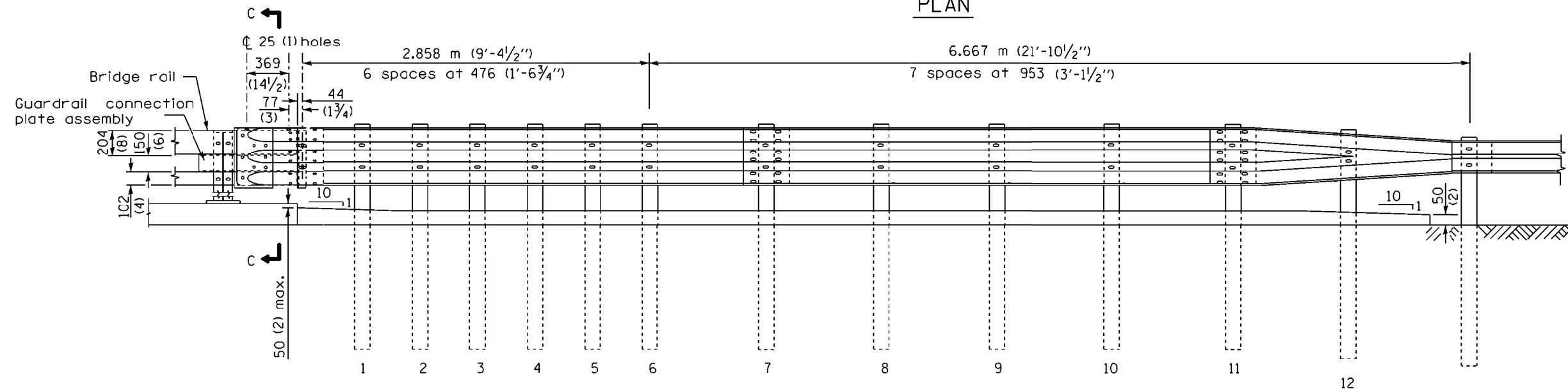
**TRAFFIC BARRIER TERMINAL, TYPE 6 STANDARD
INSTALLED PRIOR TO JANUARY 1, 2007**

SCALE: SHEET OF SHEETS STA. TO STA.

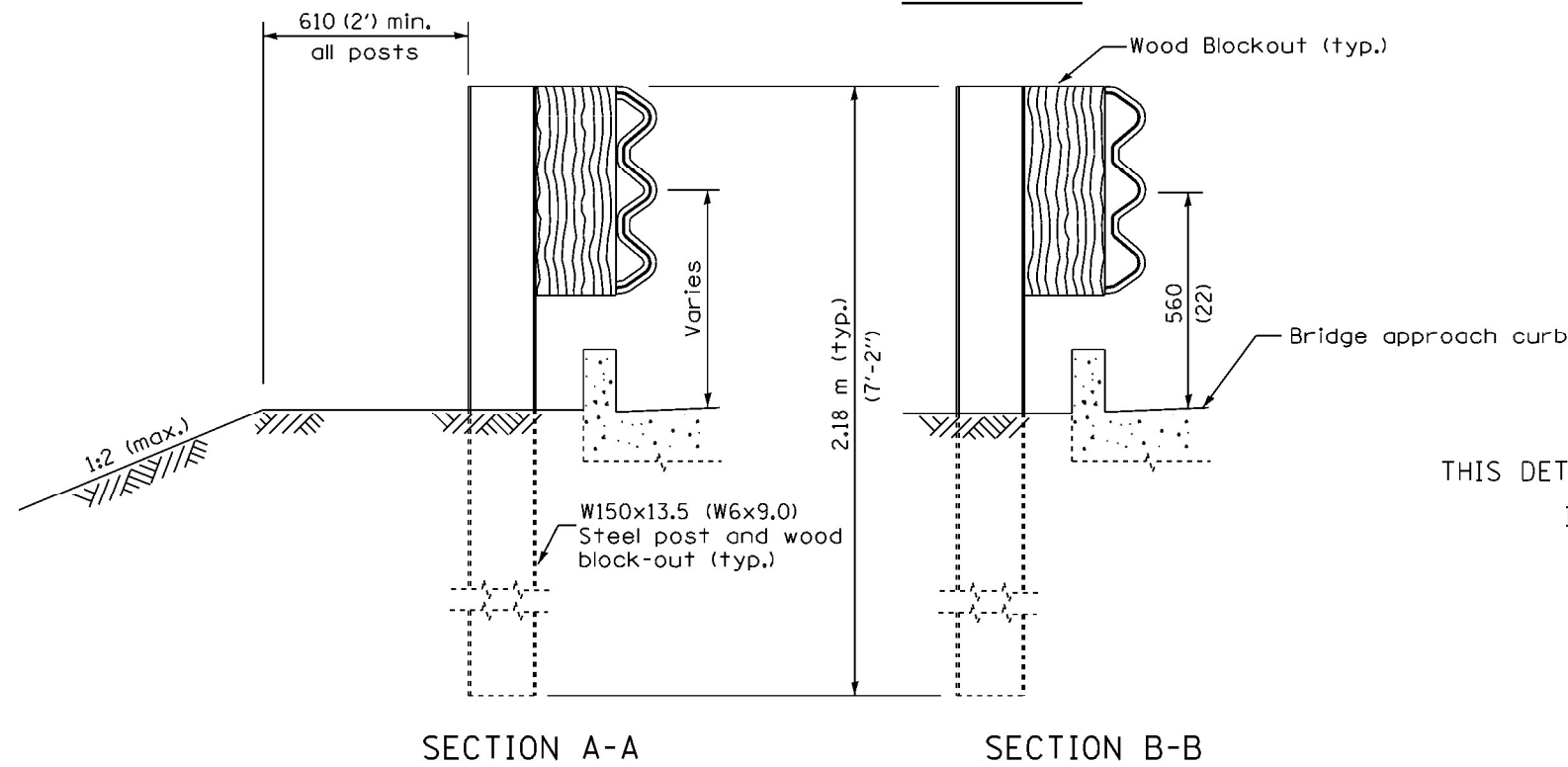
F.A. RTE.	SECTION	COUNTY	TOTAL SHEETS	SHEET NO.
VAR.	D9 GUARDRAIL REPAIR FY22-1	VARIOUS	20	14
			CONTRACT NO. 78868	
ILLINOIS FED. AID PROJECT				



PLAN



ELEVATION



GENERAL NOTES

- This standard shows attachment to curb mounted bridge rail. Attachment to side mounted bridge rail is similar.
- See Standard 630001 for details of guardrail not shown.
- Thrie beam rail shall be bolted to block-out at all posts.
- See Standard 420401 for details of bridge approach pavement.
- All slope ratios are expressed as units of vertical displacement to units of horizontal displacement (V:H).
- All dimensions are in millimeters (inches) unless otherwise shown.

THIS DETAIL IS APPLICABLE TO THE GUARDRAIL INSTALLED PRIOR TO JANUARY 1, 2007.

DATE	REVISIONS
4-1-06	Added a General Note.
1-1-04	Revised bolts and bolt spacing in connection plate & wood blockouts.

TRAFFIC BARRIER TERMINAL, TYPE 6A

Sheet 1 of 3

STANDARD 631032-02

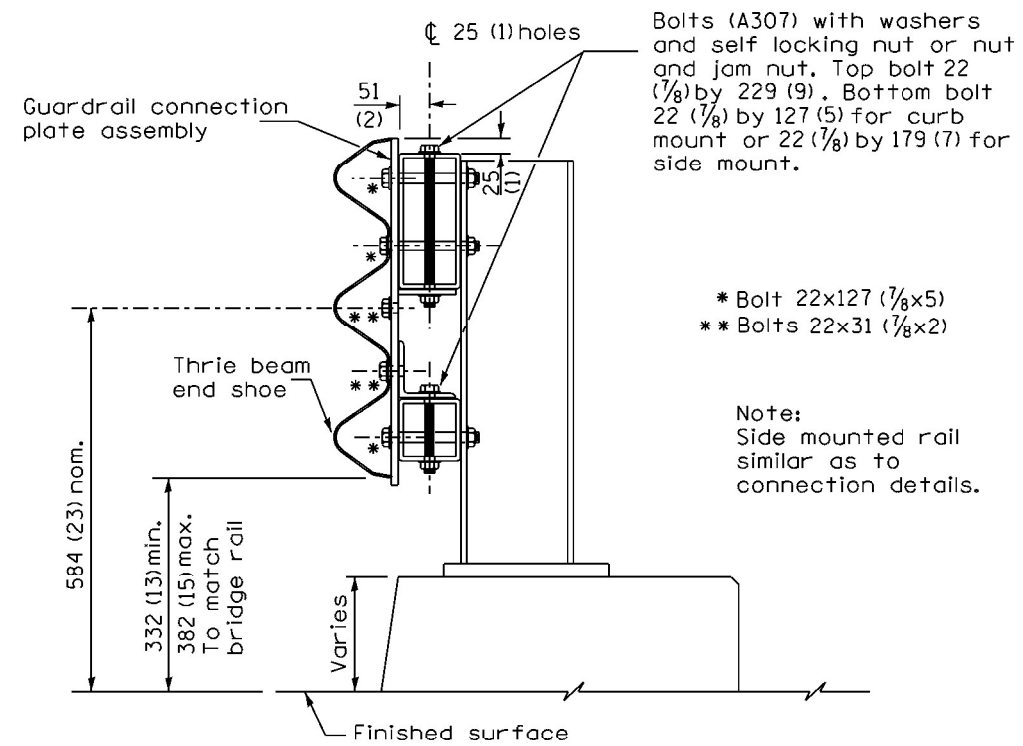
FILE NAME :	USER NAME :	DESIGNED :	REVISED :
pw\planroom.dot\illinois.gov\PIDOT\Documents\DOT Offices\District 9\Projects\Geometrics\DOTtoGeometrics\guardrail.dgn	poesi		
PLOT SCALE = 26.0000 / in.	CHECKED :	REVISED :	
PLOT DATE = 2/11/2021	DATE :	REVISED :	

STATE OF ILLINOIS
DEPARTMENT OF TRANSPORTATION

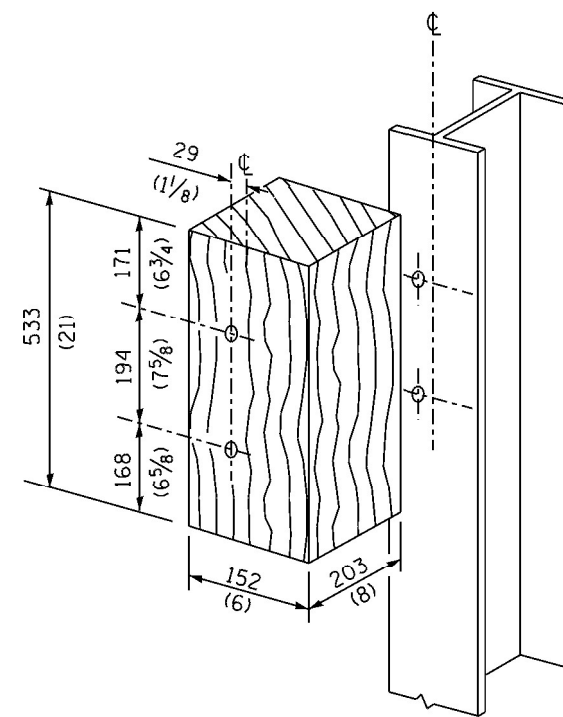
TRAFFIC BARRIER TERMINAL, TYPE 6A STANDARD
INSTALLED PRIOR TO JANUARY 1, 2007

SCALE: SHEET OF SHEETS STA. TO STA.

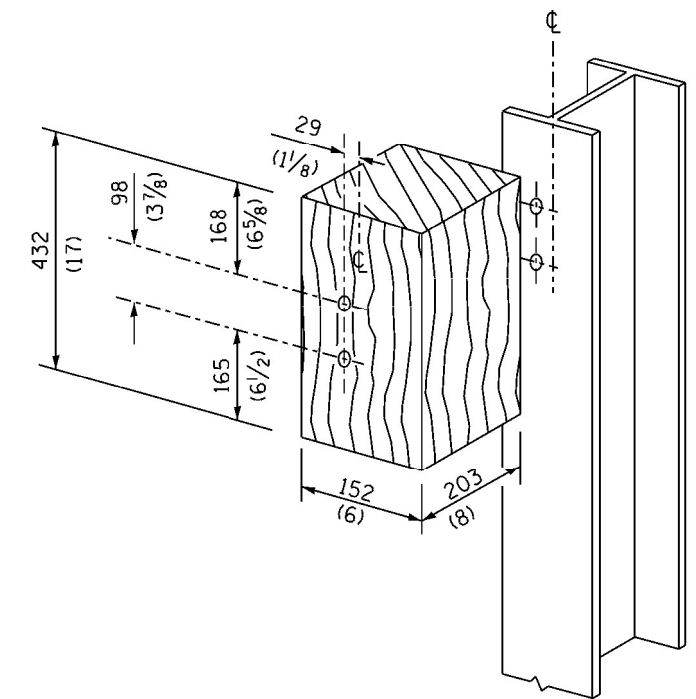
F.A. RTE.	SECTION	COUNTY	TOTAL SHEETS	SHEET NO.
VAR.	D9 GUARDRAIL REPAIR FY22-1	VARIOUS	20	15
CONTRACT NO. 78868				
ILLINOIS FED. AID PROJECT				



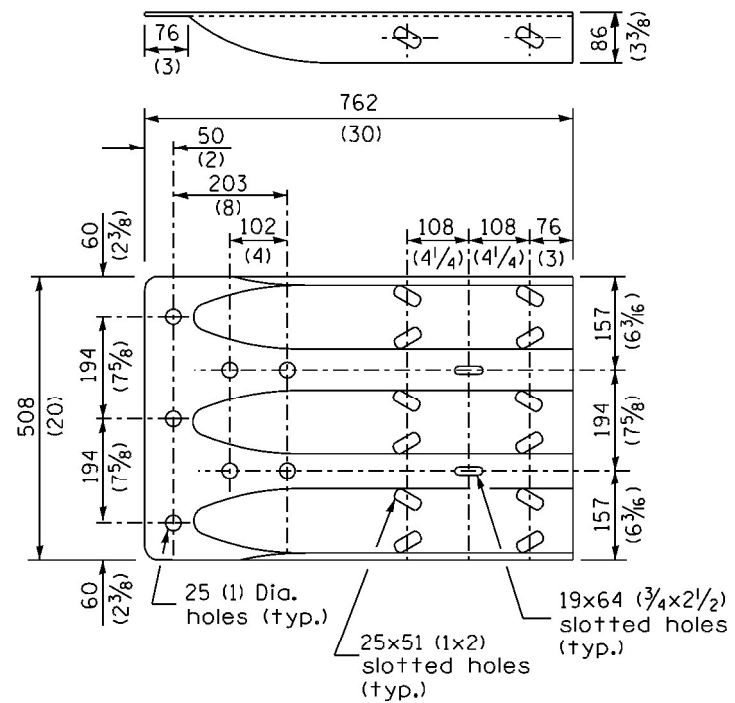
SECTION C-C



POSTS 1-11 WOOD BLOCKOUT DETAIL



POST 12 WOOD BLOCKOUT DETAIL



MODIFIED THRIE BEAM END SHOE DETAIL

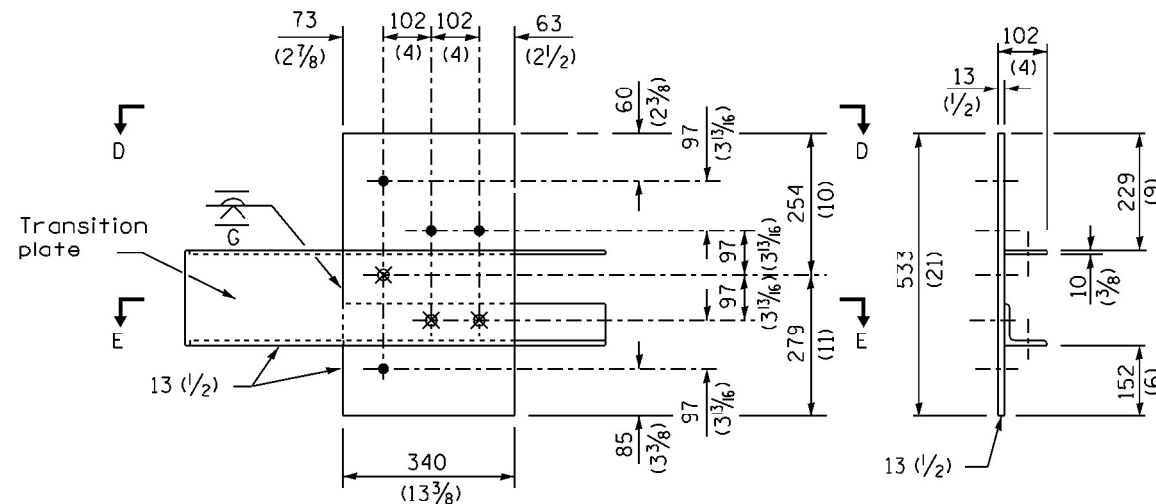
THIS DETAIL IS APPLICABLE TO THE GUARDRAIL INSTALLED PRIOR TO JANUARY 1, 2007.

TRAFFIC BARRIER TERMINAL, TYPE 6A

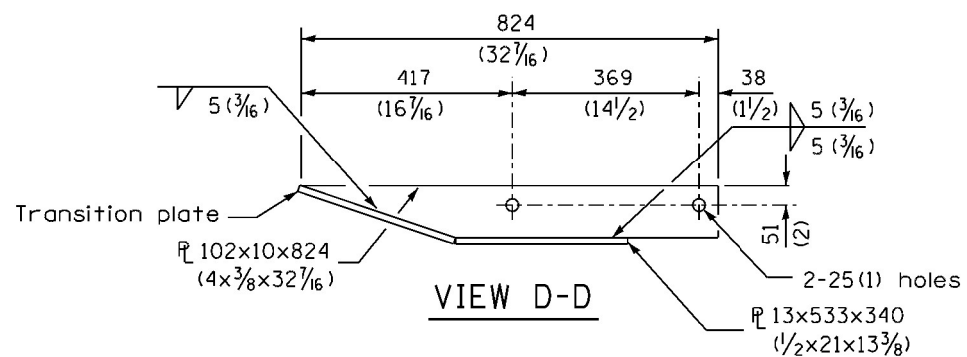
Sheet 2 of 3

STANDARD 631032-02

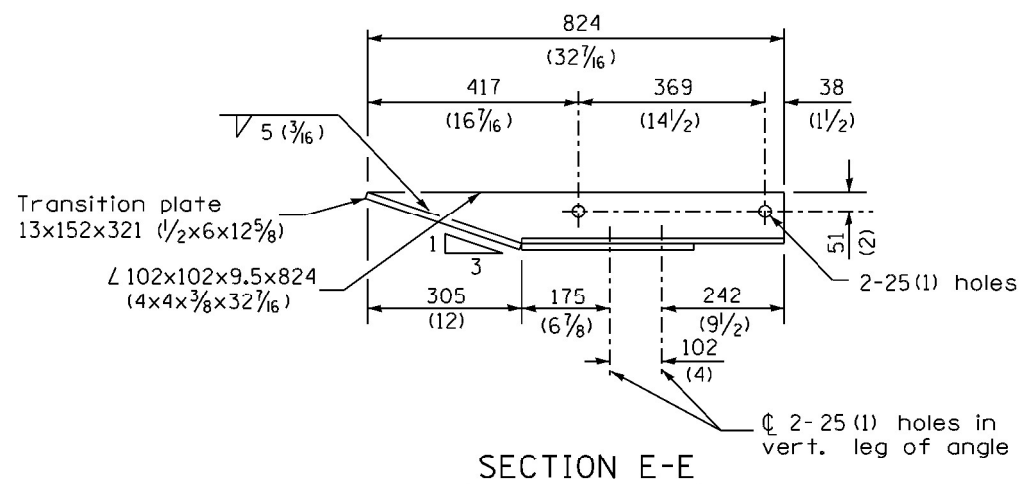
FILE NAME =	USER NAME = pcesl	DESIGNED -	REVISED -	STATE OF ILLINOIS DEPARTMENT OF TRANSPORTATION	TRAFFIC BARRIER TERMINAL, TYPE 6A STANDARD INSTALLED PRIOR TO JANUARY 1, 2007	F.A. RTE.	SECTION	COUNTY	TOTAL SHEETS	SHEET NO.
p:\planroom\dot.illinois.gov\PIDOT\Documents\IDOT Offices\District 9\Projects\Geometrics\BAND to Geometrics\guardrail.dgn		CHECKED -	REVISED -			VAR.	D9 GUARDRAIL REPAIR FY22-1	VARIOUS	20	16
PLOT SCALE = 26.0000 / in.		DATE -	REVISED -			CONTRACT NO. 78868				
Default						ILLINOIS FED. AID PROJECT				



GUARDRAIL CONNECTION PLATE ASSEMBLY DETAILS
(Mirror for opposite end)



VIEW D-D

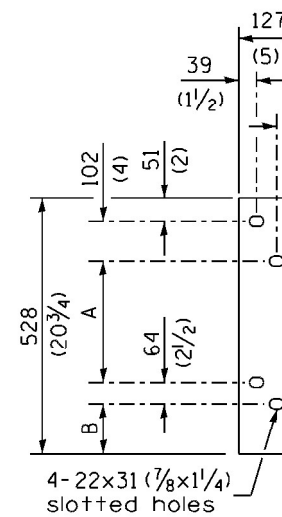


SECTION E-E

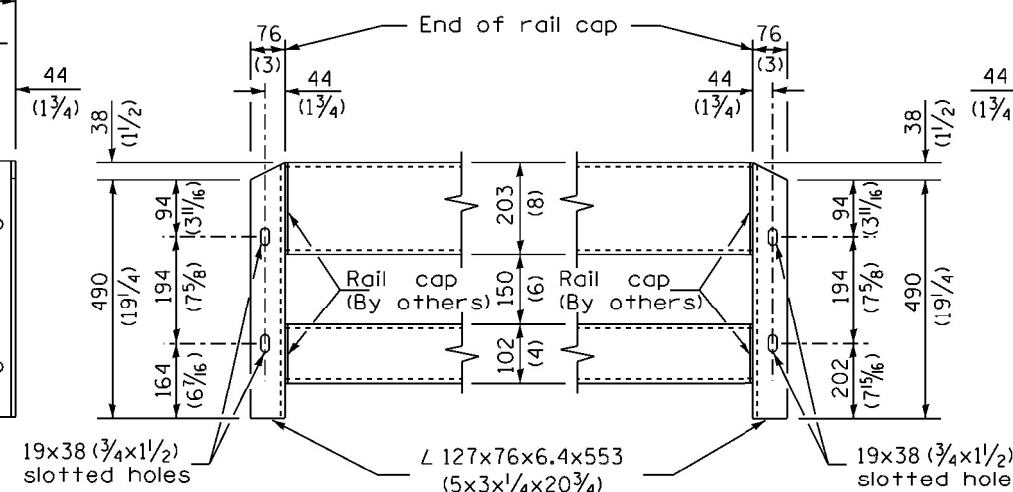
- 4-25 (1) holes for 22 (7/8) H.S. bolts and nuts
- ✕ Drill and tap 3 holes for 22 (7/8) H.S. bolts.

LEGEND

Dimensions	A	B
For Curb Mounted Rail	222 (8 3/4)	89 (3 1/2)
For Side Mounted Rail	247 (9 3/4)	64 (2 1/2)

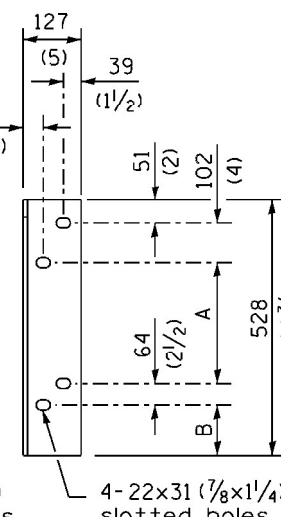


DEPARTURE END VIEW



CONNECTION ANGLES

(Install angles to rail caps using 19 (5/8) washers and self-locking nuts or nuts and jam nuts, to be provided by others)



APPROACH END VIEW

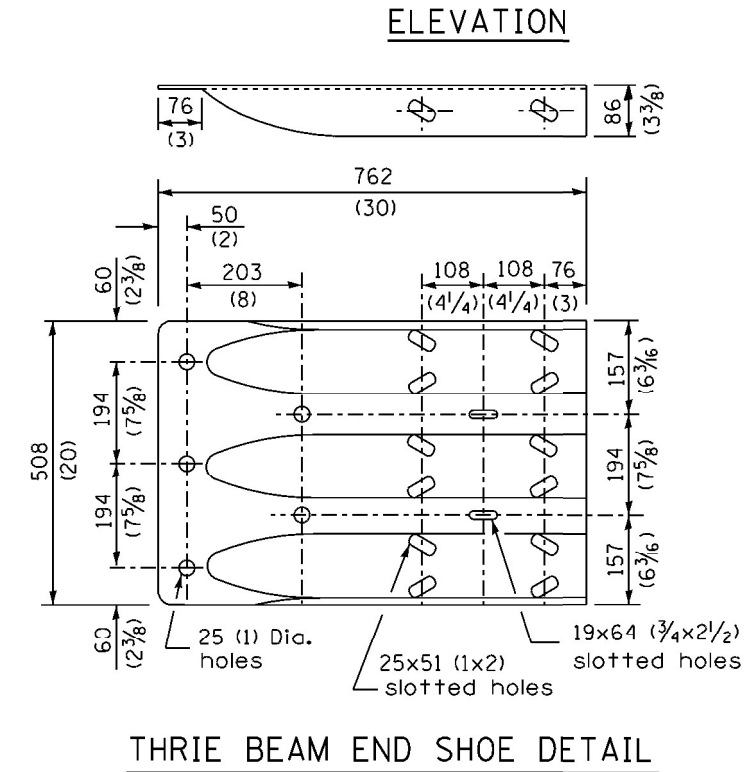
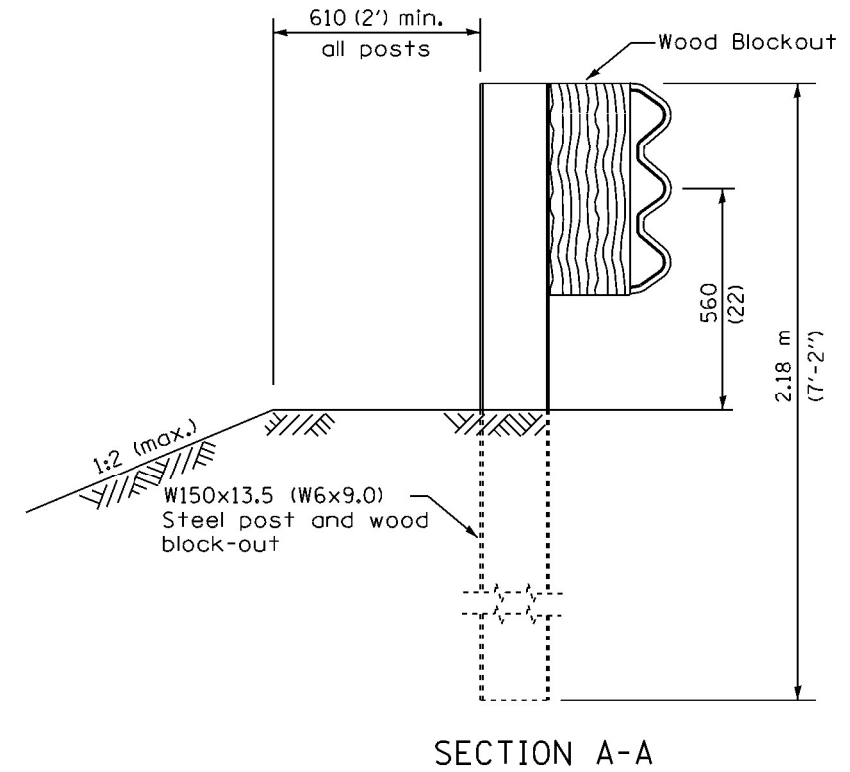
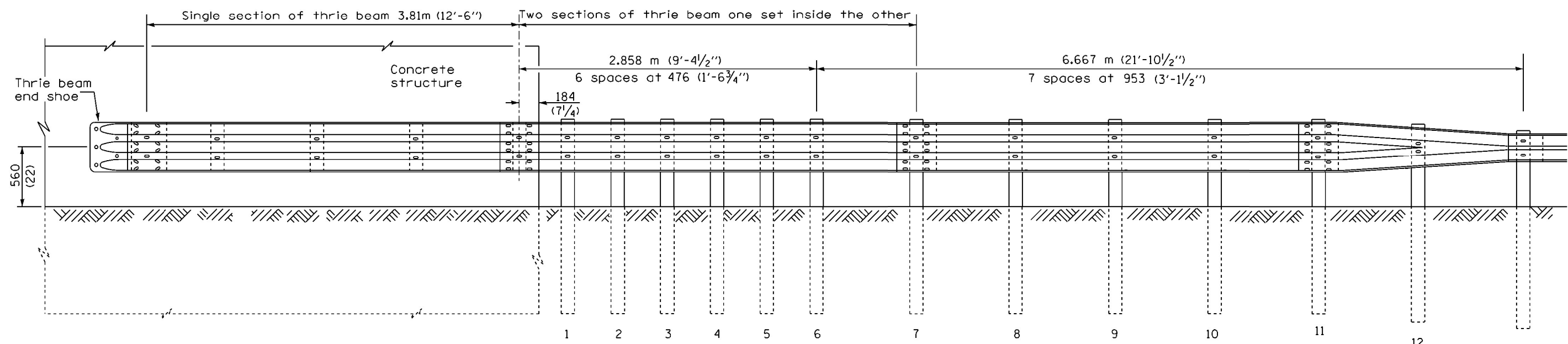
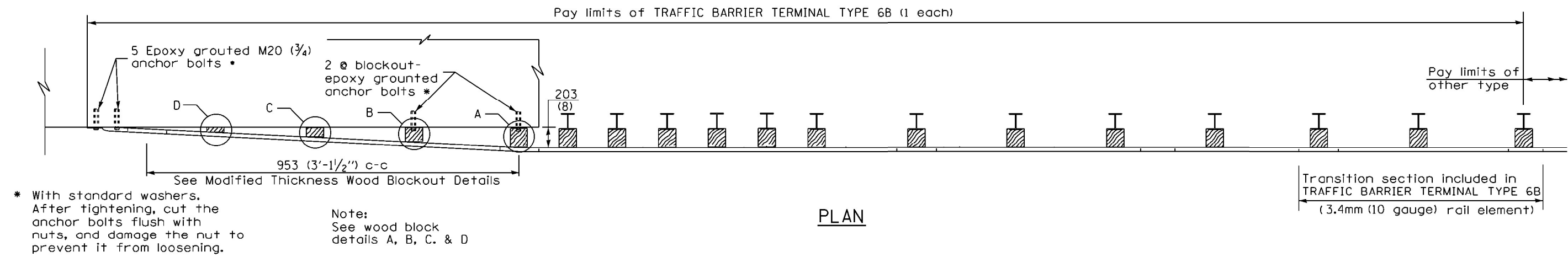
THIS DETAIL IS APPLICABLE TO THE GUARDRAIL INSTALLED PRIOR TO JANUARY 1, 2007.

TRAFFIC BARRIER TERMINAL, TYPE 6A

Sheet 3 of 3

STANDARD 631032-02

FILE NAME =	USER NAME = poesi	DESIGNED -	REVISED -	STATE OF ILLINOIS DEPARTMENT OF TRANSPORTATION	TRAFFIC BARRIER TERMINAL, TYPE 6A STANDARD INSTALLED PRIOR TO JANUARY 1, 2007	F.A. RTE.	SECTION	COUNTY	TOTAL SHEETS	SHEET NO.	
pwi\planroom.dot.illinois.gov\PIDOT\Documents\DOT Offices\District 9\Projects\Geometrics\BAND\to\Geometrics\guardrail.dgn		REVISOR -	REVISOR -			VAR.	D9 GUARDRAIL REPAIR FY22-1	VARIOUS	20	17	
PLOT SCALE = 26.0000 / in.		CHECKED -	REVISOR -			CONTRACT NO. 78868					
Default		DATE -	REVISOR -			ILLINOIS FED. AID PROJECT					



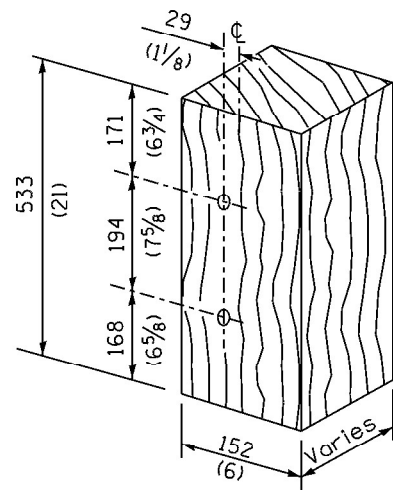
THIS DETAIL IS APPLICABLE TO THE GUARDRAIL INSTALLED PRIOR TO JANUARY 1, 2007.

GENERAL NOTES

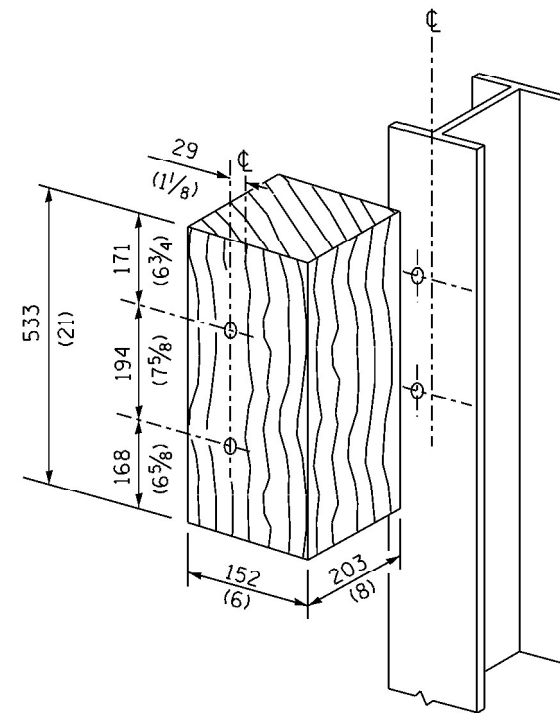
- See Standard 630001 for details of guardrail not shown.
- Thrie beam rail shall be bolted to block-out at all posts.
- All slope ratios are expressed as units of vertical displacement to units of horizontal displacement (V:H).
- All dimensions are in millimeters (inches) unless otherwise shown.

TRAFFIC BARRIER TERMINAL, TYPE 6B
Sheet 1 of 2
STANDARD 631033-01

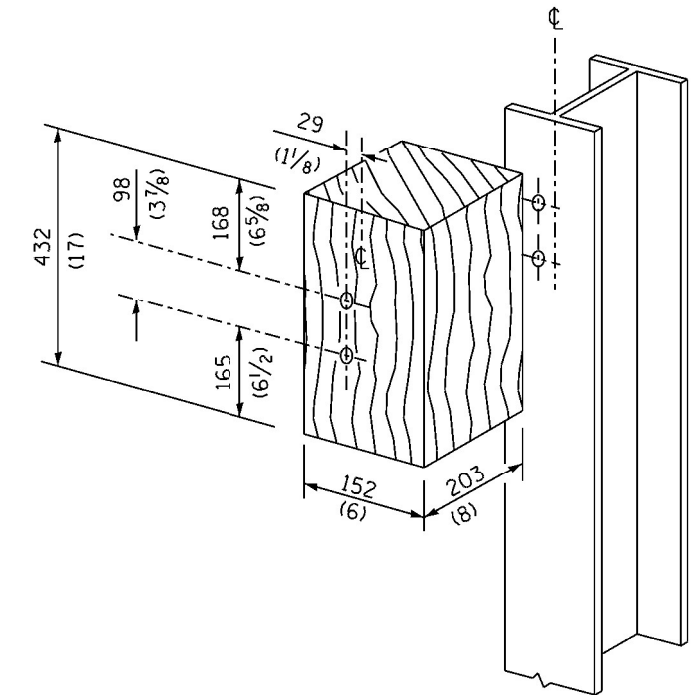
FILE NAME :	USER NAME = poesi	DESIGNED -	REVISED -	STATE OF ILLINOIS DEPARTMENT OF TRANSPORTATION	TRAFFIC BARRIER TERMINAL, TYPE 6B STANDARD INSTALLED PRIOR TO JANUARY 1, 2007	F.A. RTE.:	SECTION	COUNTY	TOTAL SHEETS	SHEET NO.
pw\planroom.dot\illinois.gov\PIDOT\Documents\DOT Offices\District 9\Projects\Geometrics\BAND\to\Geometrics\guardrail.dgn						VAR.	D9 GUARDRAIL REPAIR FY22-1	VARIOUS	20	18
Default	PLOT SCALE = 26.0000' / in.	CHECKED -	REVISED -		SCALE:	SHEET OF SHEETS		STA.	TO STA.	
	PLOT DATE = 2/11/2021	DATE -	REVISED -			ILLINOIS FED. AID PROJECT				



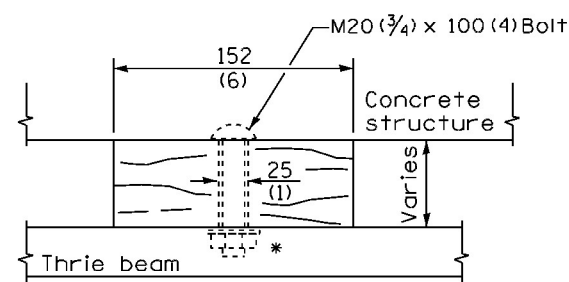
MODIFIED THICKNESS WOOD BLOCKOUT DETAIL



POSTS 1-11 WOOD BLOCKOUT DETAIL

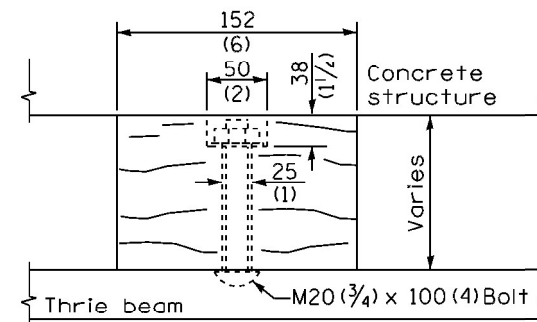


POST 12 WOOD BLOCKOUT DETAIL

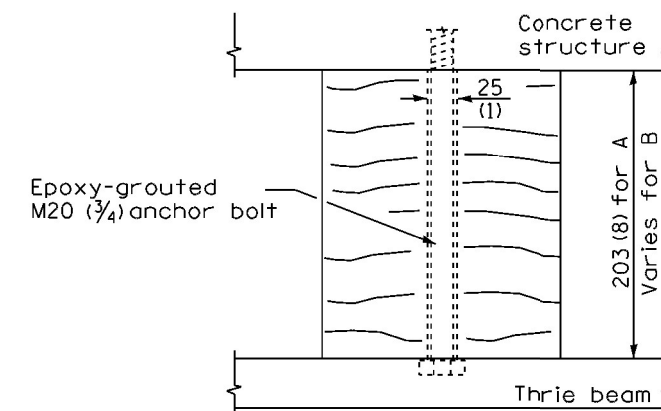


WOOD BLOCKOUT D

Bolt to thrie beam with M20 (3/4) by 100 (4) bolt, washer & nut. Reverse direction of insertion. *



WOOD BLOCKOUT C



WOOD BLOCKOUT A & B

THIS DETAIL IS APPLICABLE TO THE GUARDRAIL
INSTALLED PRIOR TO JANUARY 1, 2007.

TRAFFIC BARRIER
TERMINAL, TYPE 6B

Sheet 2 of 2

STANDARD 631033-01

FILE NAME =	USER NAME = poesi	DESIGNED -	REVISED -
pwi\planroom.dot\illinois.gov\PIDOT\Documents\DOT Offices\District 9\Projects\Geometrics\DOTtoGeometrics\guardrail.dgn		DEAN	REVISED -
Default	PLOT SCALE = 26.0000' / in.	CHECKED -	REVISED -
	PLOT DATE = 2/11/2021	DATE -	REVISED -

STATE OF ILLINOIS
DEPARTMENT OF TRANSPORTATION

TRAFFIC BARRIER TERMINAL, TYPE 6B STANDARD
INSTALLED PRIOR TO JANUARY 1, 2007

SCALE: SHEET OF SHEETS STA. TO STA.

F.A. RTE.	SECTION	COUNTY	TOTAL SHEETS	SHEET NO.
VAR.	D9 GUARDRAIL REPAIR FY22-1	VARIOUS	20	19
CONTRACT NO. 78868				
ILLINOIS FED. AID PROJECT				

