

SUMMARY OF QUANTITIES

CONSTRUCTION TYPE CODE		0004	
CODE NO.	ITEM	UNIT	QUANTITY
20200100	EARTH EXCAVATION	CU YD	805
20201200	REMOVAL AND DISPOSAL OF UNSUITABLE MATERIAL	CU YD	10
20800150	TRENCH BACKFILL	CU YD	852
25000400	NITROGEN FERTILIZER NUTRIENT	POUND	37
25000500	PHOSPHORUS FERTILIZER NUTRIENT	POUND	37
25000600	POTASSIUM FERTILIZER NUTRIENT	POUND	37
25100115	MULCH, METHOD 2	ACRE	0.50
28000250	TEMPORARY EROSION CONTROL SEEDING	POUND	42
28000500	INLET AND PIPE PROTECTION	EACH	16
30200650	PROCESSING MODIFIED SOIL 12"	SQ YD	5,732
30201700	PORTLAND CEMENT	TON	209
31101000	SUBGRADE GRANULAR MATERIAL, TYPE B	TON	20
40201000	AGGREGATE FOR TEMPORARY ACCESS	TON	294
40600290	BITUMINOUS MATERIALS (TACK COAT)	POUND	2,268
40600990	TEMPORARY RAMP	SQ YD	410
40603085	HOT-MIX ASPHALT BINDER COURSE, IL-19.0, N70	TON	1,835
40604152	POLYMERIZED HOT-MIX ASPHALT SURFACE COURSE, IL-9.5, MIX "C", N70	TON	423
40800025	BITUMINOUS MATERIALS (PRIME COAT)	POUND	127
40800050	INCIDENTAL HOT-MIX ASPHALT SURFACING	TON	26
42300200	PORTLAND CEMENT CONCRETE DRIVEWAY PAVEMENT, 6 INCH	SQ YD	882
42400100	PORTLAND CEMENT CONCRETE SIDEWALK 4 INCH	SQ FT	11,366
42400800	DETECTABLE WARNINGS	SQ FT	140
44000100	PAVEMENT REMOVAL	SQ YD	4,163
44000200	DRIVEWAY PAVEMENT REMOVAL	SQ YD	811
44000600	SIDEWALK REMOVAL	SQ FT	11,326
54248510	CONCRETE COLLAR	CU YD	2
550A0050	STORM SEWERS, CLASS A, TYPE 1 12"	FOOT	120

SUMMARY OF QUANTITIES

CONSTRUCTION TYPE CODE		0004	
CODE NO.	ITEM	UNIT	QUANTITY
550A0360	STORM SEWERS, CLASS A, TYPE 2 15"	FOOT	487
550A0380	STORM SEWERS, CLASS A, TYPE 2 18"	FOOT	50
550A0410	STORM SEWERS, CLASS A, TYPE 2 24"	FOOT	73
55100500	STORM SEWER REMOVAL 12"	FOOT	62
55100900	STORM SEWER REMOVAL 18"	FOOT	55
55101200	STORM SEWER REMOVAL 24"	FOOT	118
56109210	WATER VALVES TO BE ADJUSTED	EACH	9
60108100	PIPE UNDERDRAINS 4" (SPECIAL)	FOOT	360
60218300	MANHOLES, TYPE A, 4'-DIAMETER, TYPE 1 FRAME, OPEN LID	EACH	1
60218500	MANHOLES, TYPE A, 4'-DIAMETER, TYPE 3 FRAME AND GRATE	EACH	2
60235700	INLETS, TYPE A, TYPE 3 FRAME AND GRATE	EACH	6
60240210	INLETS, TYPE B, TYPE 1 FRAME, OPEN LID	EACH	1
60240220	INLETS, TYPE B, TYPE 3 FRAME AND GRATE	EACH	1
60240327	INLETS, TYPE B, TYPE 23 FRAME AND GRATE	EACH	1
60255800	MANHOLES TO BE ADJUSTED WITH NEW TYPE 1 FRAME, CLOSED LID	EACH	3
60500060	REMOVING INLETS	EACH	4
60600605	CONCRETE CURB, TYPE B	FOOT	11
60603800	COMBINATION CONCRETE CURB AND GUTTER, TYPE B-6.12	FOOT	2,604
60605000	COMBINATION CONCRETE CURB AND GUTTER, TYPE B-6.24	FOOT	133
67000500	ENGINEER'S FIELD OFFICE, TYPE B	CAL MO	6
67100100	MOBILIZATION	L SUM	1
70300100	SHORT TERM PAVEMENT MARKING	FOOT	321
70300150	SHORT TERM PAVEMENT MARKING REMOVAL	SQ FT	107
70300220	TEMPORARY PAVEMENT MARKING - LINE 4"	FOOT	2,689
70300240	TEMPORARY PAVEMENT MARKING - LINE 6"	FOOT	301
70300260	TEMPORARY PAVEMENT MARKING - LINE 12"	FOOT	63
70300280	TEMPORARY PAVEMENT MARKING - LINE 24"	FOOT	42

SUMMARY OF QUANTITIES

CONSTRUCTION TYPE CODE		0004	
CODE NO.	ITEM	UNIT	QUANTITY
* 72000100	SIGN PANEL - TYPE 1	SQ FT	81
* 72800100	TELESCOPING STEEL SIGN SUPPORT	FOOT	298
* 78000200	THERMOPLASTIC PAVEMENT MARKING - LINE 4"	FOOT	2,689
* 78000400	THERMOPLASTIC PAVEMENT MARKING - LINE 6"	FOOT	301
* 78000600	THERMOPLASTIC PAVEMENT MARKING - LINE 12"	FOOT	63
* 78000650	THERMOPLASTIC PAVEMENT MARKING - LINE 24"	FOOT	42
* 78001110	PAINT PAVEMENT MARKING - LINE 4"	FOOT	100
* 78001150	PAINT PAVEMENT MARKING - LINE 12"	FOOT	17
X2010400	STUMP REMOVAL ONLY	UNIT	163
X2501010	SEEDING, CLASS 2 (MODIFIED)	ACRE	0.50
* X2600011	REMOVE AND RELOCATE SIGN PANEL	EACH	10
X3400004	RETAINING WALL REMOVAL	FOOT	53
X4400196	HOT-MIX ASPHALT SURFACE REMOVAL, SPECIAL	SQ YD	115
* X5091765	PIPE HANDRAIL, SPECIAL	FOOT	6
X6020074	INLETS, TYPE A, TYPE 3V FRAME AND GRATE	EACH	2
X6020075	INLETS, TYPE B, TYPE 3V FRAME AND GRATE	EACH	2
X6024240	INLETS, SPECIAL	EACH	2
X7010216	TRAFFIC CONTROL AND PROTECTION, (SPECIAL)	L SUM	1
X7030005	TEMPORARY PAVEMENT MARKING REMOVAL	SQ FT	1,194
* X7240300	SIGN REMOVAL	EACH	12
* X7350010	SIGN SUPPORT BRACKET	EACH	2
Z0012450	CONCRETE STEPS	CU YD	1
Z0056669	STORM SEWERS, TYPE 2, WATER MAIN QUALITY PIPE, 15"	FOOT	54
Z0056648	STORM SEWERS, TYPE 1, WATER MAIN QUALITY PIPE, 12"	FOOT	543
# Z0076600	TRAINEES	HOURL	1,000
Z0056668	STORM SEWERS, TYPE 2, WATER MAIN QUALITY PIPE, 12"	FOOT	52
# Z0076604	TRAINEES TRAINING PROGRAM GRADUATE	HOURL	1,000
Z0056672	STORM SEWERS, TYPE 2, WATER MAIN QUALITY PIPE, 24"	FOOT	54

* DENOTES SPECIALTY ITEM

0042

REVISIONS

5-26-21	
---------	--

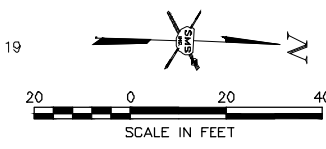
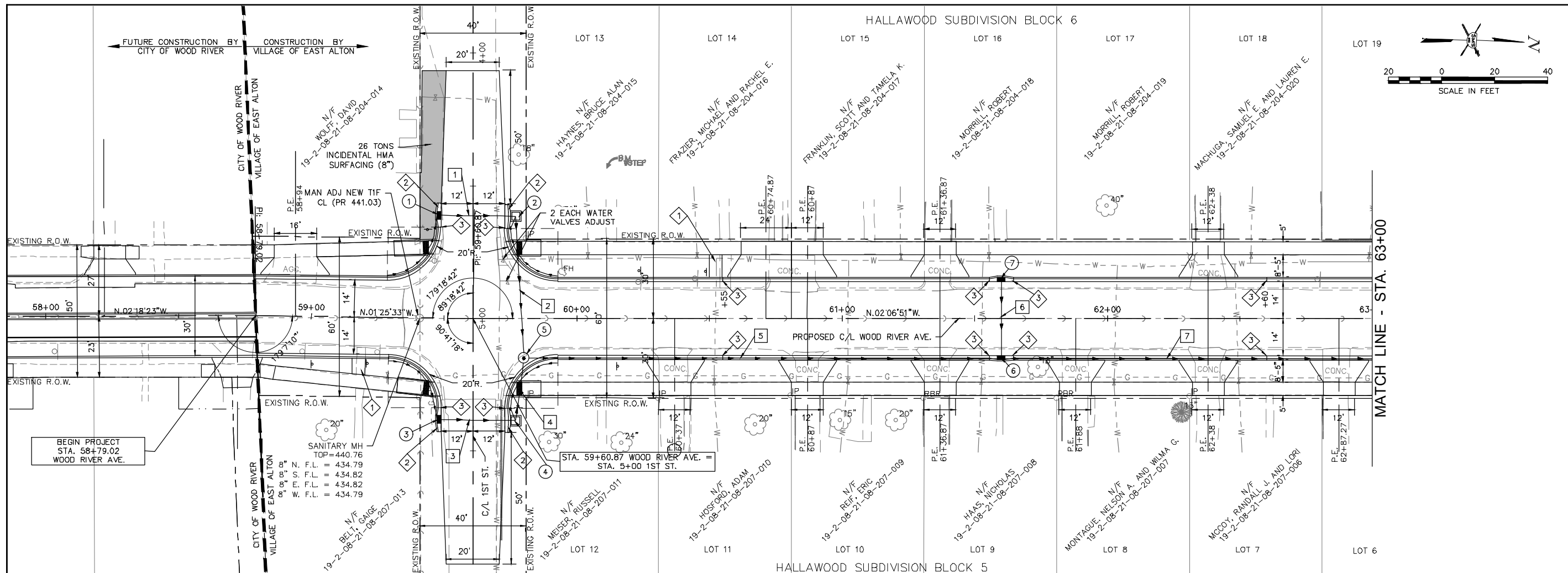
SMS Sheppard, Morgan & Schwaab, Inc.
 CONSULTING ENGINEERS AND LAND SURVEYORS
 215 Market Street, Alton, IL 62002 618/462-9755 E-mail: mail@smsegi.com
ENGINEERS DESIGN FIRM # 184-000992

VILLAGE OF EAST ALTON, ILLINOIS
 SECTION 18-00052-00-PV / 19-00052-01-PV
 WOOD RIVER AVENUE
 SUMMARY OF QUANTITIES

CONTRACT NO.
97754

REF. BK. PG.
 JOB NO. 52008.1
 DSN. BY: DEG
 DWN. BY: CDP
 CHK. BY: DEG
 DATE: MARCH, 2021

SCALE:
 SHEET 3 OF 39



DRAINAGE STRUCTURES

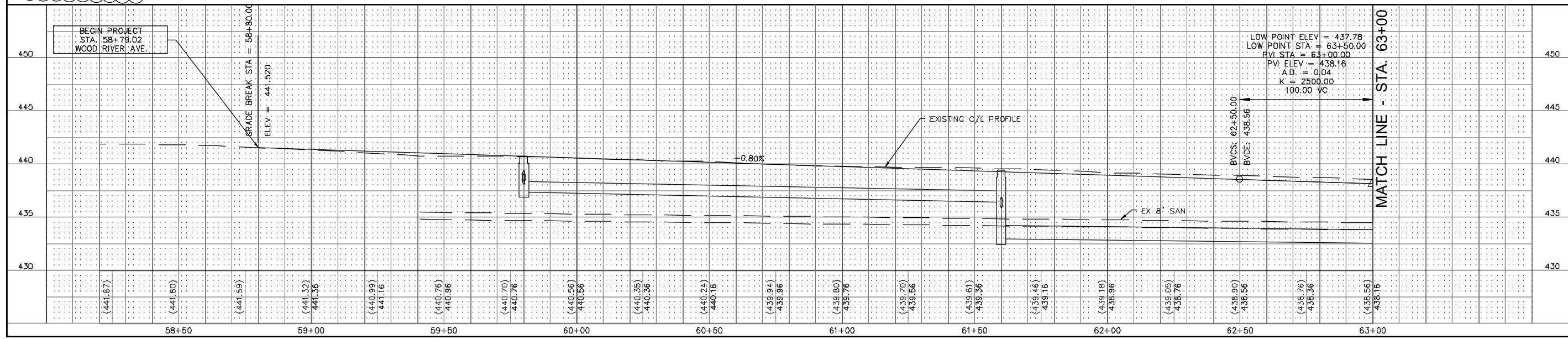
- 1 INLETS TA T3F&G
STA. 59+47.36, 38.73' LT.
T.C. = 440.84
4" SE. F.L. = 438.48
12" N. F.L. = 438.44
- 2 INLETS, SPECIAL
STA. 59+76.95, 38.50' LT.
T.C. = 440.84
4" NE. F.L. = 438.34
12" S. F.L. = 438.30
12" E. F.L. = 438.30
- 3 INLETS TA T3F&G
STA. 59+48.29, 38.27' RT.
T.C. = 440.63
4" SW. F.L. = 438.68
12" N. F.L. = 438.64
- 4 INLETS, SPECIAL
STA. 59+76.95, 38.60' RT.
T.C. = 440.84
4" NW. F.L. = 438.54
12" S. F.L. = 438.50
12" W. F.L. = 438.50
- 5 INLETS TB T1F OL
STA. 59+80.11, 15.04' RT.
TOP = 440.42
12" W. F.L. = 438.10
12" E. F.L. = 438.38
12" N. F.L. = 437.36
- 6 INLETS TB T3VF&G
STA. 61+60.00, 15.04' RT.
T.C. = 439.41
12" S. F.L. = 434.44
12" W. F.L. = 435.87
15" N. F.L. = 432.95
- 7 INLETS TA T3VF&G
STA. 61+60.00, 15.04' LT.
T.C. = 439.41
12" E. F.L. = 436.17

STORM SEWERS

- 1 1 TO 2 29 FT. - STORM SEWERS, T1, WAT MN, 12" @ 0.50%
4 CU. YD. TRENCH BACKFILL
- 2 2 TO 5 54 FT. - STORM SEWERS, T1, WAT MN, 12" @ 0.37%
8 CU. YD. TRENCH BACKFILL
- 3 3 TO 4 29 FT. - STORM SEWERS, T1, WAT MN, 12" @ 0.50%
4 CU. YD. TRENCH BACKFILL
- 4 4 TO 5 24 FT. - STORM SEWERS, T1, WAT MN, 12" @ 0.50%
4 CU. YD. TRENCH BACKFILL
- 5 5 TO 6 180 FT. - STORM SEWERS, T1, WAT MN, 12" @ 0.51%
32 CU. YD. TRENCH BACKFILL
- 6 7 TO 6 30 FT. - STORM SEWERS, CL A, T1, 12" @ 1.00%
8 CU. YD. TRENCH BACKFILL
- 7 6 TO 8 205 FT. - STORM SEWERS, CL A, T2, 15" @ 0.27%
160 CU. YD. TRENCH BACKFILL

CONSTRUCTION NOTES

- 1 BUS PADS SHALL BE A MINIMUM OF 5' WIDE. GRADES SHALL BE LESS THAN 2% IN ALL DIRECTIONS
- 2 DEPRESS CURB IN 2'
- 3 EXPANSION JOINT PER DETAIL A HWY. STD. 606001



SMS Sheppard, Morgan & Schwab, Inc.
 CONSULTING ENGINEERS AND LAND SURVEYORS
 215 Market Street, Alton, IL 62002 618/462-4755 E-mail: sms@smsengineers.com
ENGINEERS DESIGN FIRM # 184-000992

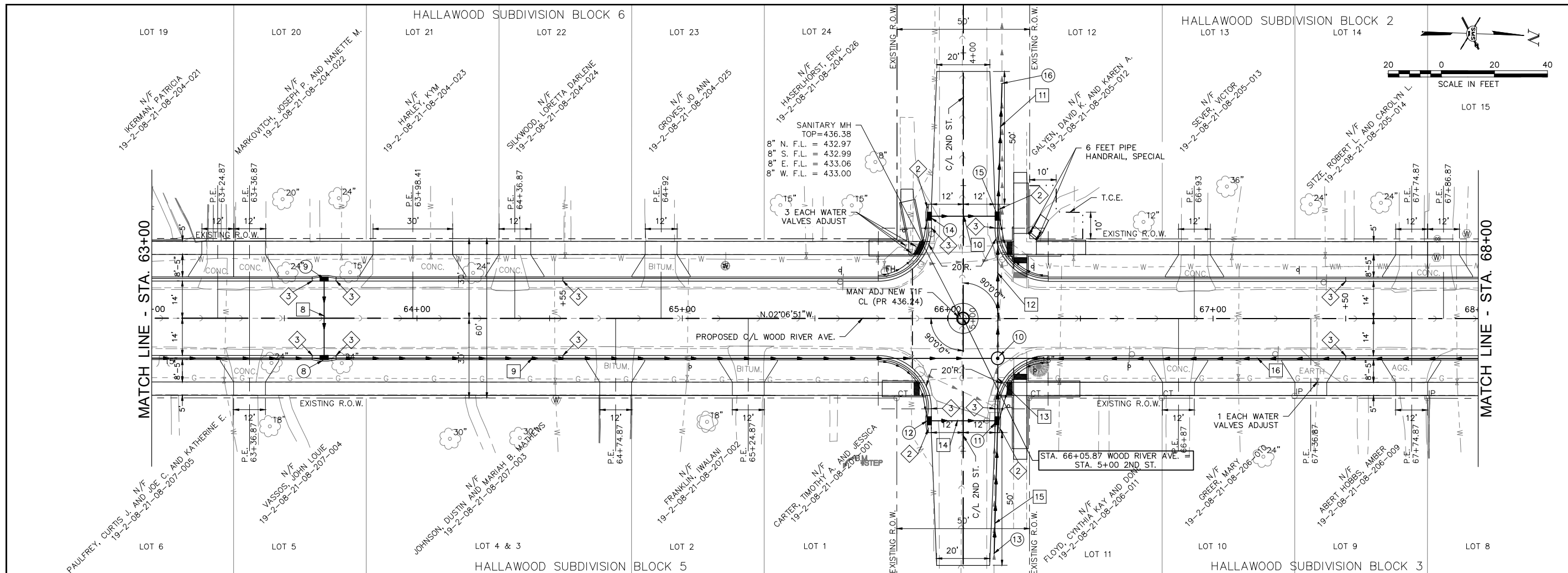
REVISIONS
 A 5-26-21

VILLAGE OF EAST ALTON, ILLINOIS
 SECTION 18-00052-00-PV / 19-00052-01-PV
 WOOD RIVER AVENUE
 PLAN AND PROFILE

CONTRACT NO.
 97754

REF. BK.	PG.
JOB NO. 52008.1	
DSN. BY: DEC	
DWN. BY: CDP	
CHK. BY: DEC	
DATE: MARCH, 2021	

HORZ: 1"=20'
 SCALE: VERT: 1"=5'
 SHEET 9 OF 39



DRAINAGE STRUCTURES

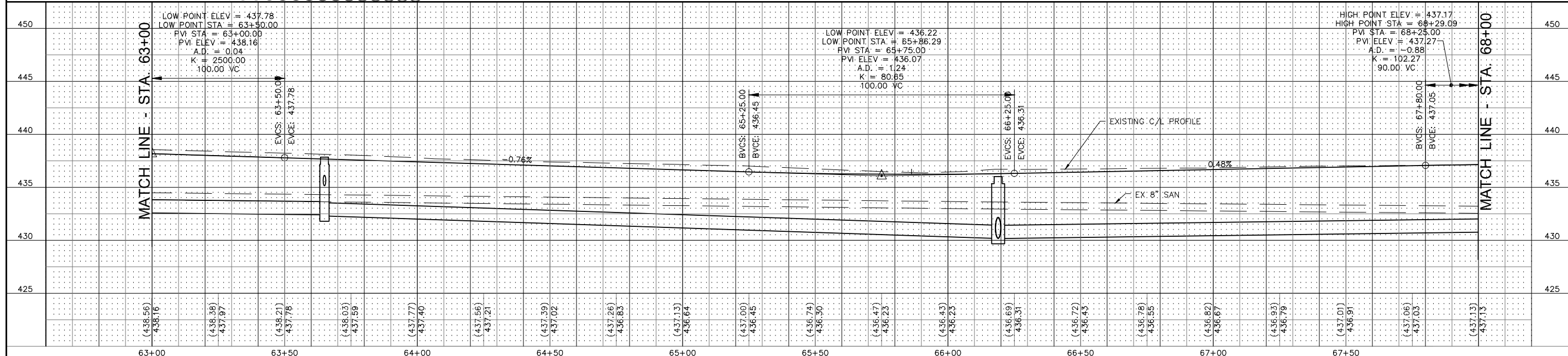
STORM SEWERS

CONSTRUCTION NOTES

- 8 INLETS TB T3VF&G STA. 63+65.00, 15.04' RT. T.C. = 437.80
15" S. F.L. = 432.39
12" W. F.L. = 435.13
15" N. F.L. = 432.39
- 9 INLETS TA T3VF&G STA. 63+65.00, 15.04' LT. T.C. = 437.80
12" E. F.L. = 435.43
- 10 MAN TA 4 DIA T1F OL STA. 66+18.91, 15.04' RT. TOP = 435.98
15" S. F.L. = 430.16
24" E. F.L. = 430.16
24" W. F.L. = 430.16
15" N. F.L. = 430.16
- 11 MAN TA 4 DIA T3F&G STA. 66+18.91, 38.50' RT. T.C. = 436.07
4" NW. F.L. = 433.10
12" S. F.L. = 430.16
18" E. F.L. = 430.16
24" W. F.L. = 430.16
- 12 INLETS TA T3F&G STA. 65+92.83, 38.50' RT. T.C. = 436.01
4" SW. F.L. = 433.04
12" N. F.L. = 430.42
- 13 CONN TO EXIST SEWER CONCRETE COLLAR STA. 66+17.54, 88.48' RT. 24" E. F.L. = 430.18
- 14 INLETS TA T3F&G STA. 65+92.83, 38.50' LT. T.C. = 436.01
4" SE. F.L. = 433.04
12" N. F.L. = 430.42
- 15 MAN TA 4 DIA T3F&G STA. 66+18.91, 38.50' LT. T.C. = 436.07
4" NE. F.L. = 433.10
12" S. F.L. = 430.16
24" E. F.L. = 430.16
24" W. F.L. = 430.16
- 16 CONN TO EXIST SEWER CONCRETE COLLAR STA. 66+20.46, 88.48' LT. 24" W. F.L. = 430.16

- 8 9 TO 8 30 FT. - STORM SEWERS, CL A, T1, 12" @ 1.00%
4 CU. YD. TRENCH BACKFILL
- 9 8 TO 10 254 FT. - STORM SEWERS, T2, WAT MN, 15" @ 0.84%
190 CU. YD. TRENCH BACKFILL
- 10 14 TO 15 26 FT. - STORM SEWERS, T2, WAT MN, 12" @ 1.00%
19 CU. YD. TRENCH BACKFILL
- 11 15 TO 16 50 FT. - STORM SEWERS, CL A, T2, 24" @ 0.00%
29 CU. YD. TRENCH BACKFILL
- 12 10 TO 15 54 FT. - STORM SEWERS, T2, WAT MN, 24" @ 0.00%
44 CU. YD. TRENCH BACKFILL
- 13 11 TO 10 23 FT. - STORM SEWERS, CL A, T2, 24" @ 0.00%
20 CU. YD. TRENCH BACKFILL
- 14 12 TO 11 26 FT. - STORM SEWERS, CL A, T2, 12" @ 1.00%
18 CU. YD. TRENCH BACKFILL
- 15 13 TO 11 50 FT. - STORM SEWERS, CL A, T2, 18" @ 0.04%
36 CU. YD. TRENCH BACKFILL
- 16 16 TO 10 282 FT. - STORM SEWERS, CL A, T2, 15" @ 0.33%
220 CU. YD. TRENCH BACKFILL

- 1 BUS PADS SHALL BE A MINIMUM OF 5' WIDE. GRADES SHALL BE LESS THAN 2% IN ALL DIRECTIONS
- 2 DEPRESS CURB IN 2'
- 3 EXPANSION JOINT PER DETAIL A HWY. STD. 606001



REVISIONS
A 5-26-21

SMS ENGINEERS
Sheppard, Morgan & Schwab, Inc.
CONSULTING ENGINEERS AND LAND SURVEYORS
215 Market Street, Alton, IL 62002 618462-9755 Email: mail@smsengineers.com
DESIGN FIRM # 184-000992

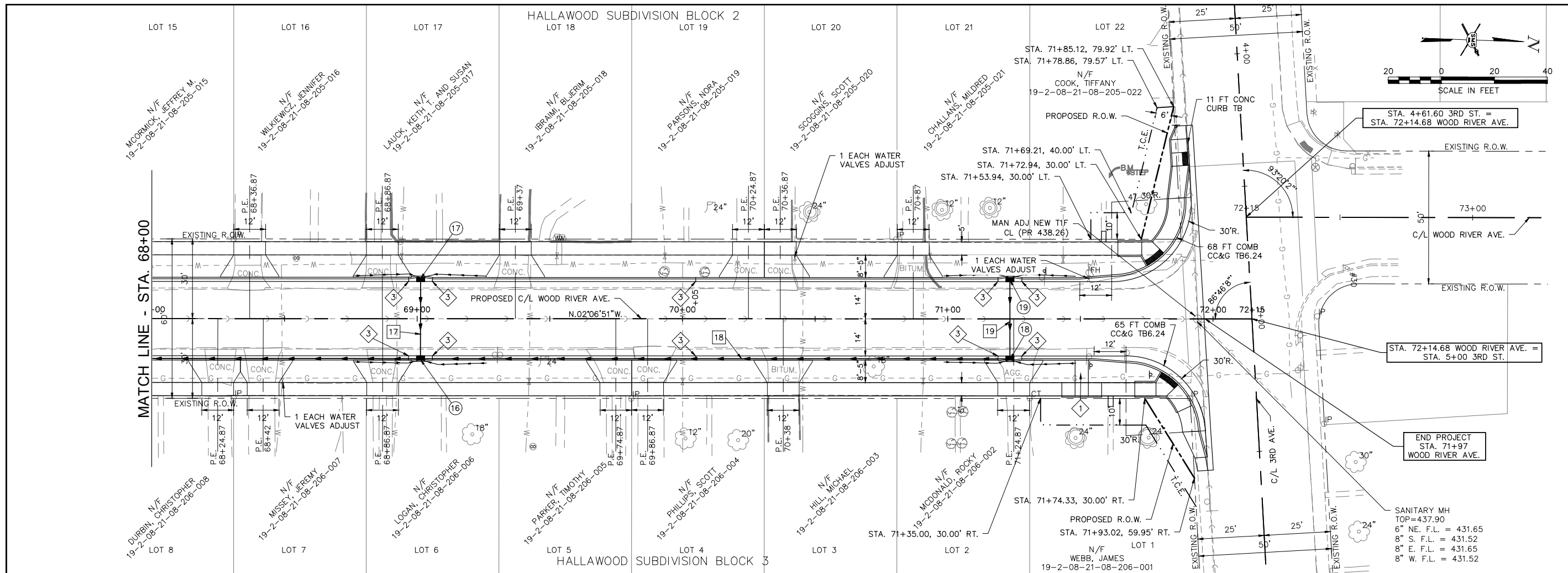
VILLAGE OF EAST ALTON, ILLINOIS
SECTION 18-00052-00-PV / 19-00052-01-PV
WOOD RIVER AVENUE
PLAN AND PROFILE

CONTRACT NO.
97754

REF. BK.	PG.
JOB NO. 52008.1	
DSN. BY: DEG	
DWN. BY: CDP	
CHK. BY: DEG	
DATE: MARCH, 2021	

HORIZ: 1"=20'
SCALE: VERT: 1"=5'

SHEET 10 OF 39



DRAINAGE STRUCTURES

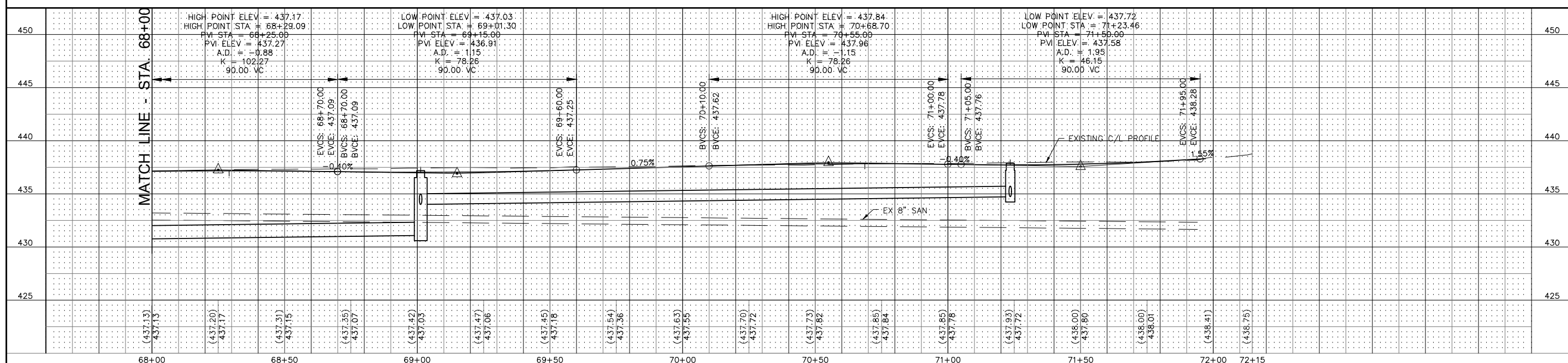
- 16 INLETS TB T3F&G
 STA. 69+01.30, 15.04' RT.
 T.C. = 437.16
 4" SE. & NE. F.L. = 434.19
 12" N. F.L. = 434.00
 12" W. F.L. = 434.00
 15" S. F.L. = 431.09
- 17 INLETS TA T3F&G
 STA. 69+01.30, 15.04' LT.
 T.C. = 437.16
 4" SW. & NW. F.L. = 434.19
 12" E. F.L. = 434.30
- 18 INLETS TB T23F&G
 STA. 71+23.46, 15.04' RT.
 E.P. = 437.44
 4" SE. & NE. F.L. = 434.88
 12" W. F.L. = 434.73
 12" S. F.L. = 435.73
- 19 INLETS TA T3F&G
 STA. 71+23.46, 15.04' LT.
 T.C. = 437.85
 4" SW. & NW. F.L. = 434.88
 12" E. F.L. = 434.88

STORM SEWERS

- 17 17 TO 16 30 FT. - STORM SEWERS, CL A, T1, 12" @ 1.00%
 4 CU. YD. TRENCH BACKFILL
- 18 18 TO 16 222 FT. - STORM SEWERS, T1, WAT MN, 12" @ 0.33%
 34 CU. YD. TRENCH BACKFILL
- 19 19 TO 18 30 FT. - STORM SEWERS, CL A, T1, 12" @ 0.50%
 4 CU. YD. TRENCH BACKFILL

CONSTRUCTION NOTES

- 1 BUS PADS SHALL BE A MINIMUM OF 5' WIDE. GRADES SHALL BE LESS THAN 2% IN ALL DIRECTIONS
- 2 DEPRESS CURB IN 2'
- 3 EXPANSION JOINT PER DETAIL A HWY. STD. 606001



REVISIONS

5-26-21	
---------	--

SMS ENGINEERS
 Sheppard, Morgan & Schwab, Inc.
 CONSULTING ENGINEERS AND LAND SURVEYORS
 215 Market Street, Alton, IL 62002 618462-9755 E-mail: mail@smsengineers.com
 DESIGN FIRM # 184-000992

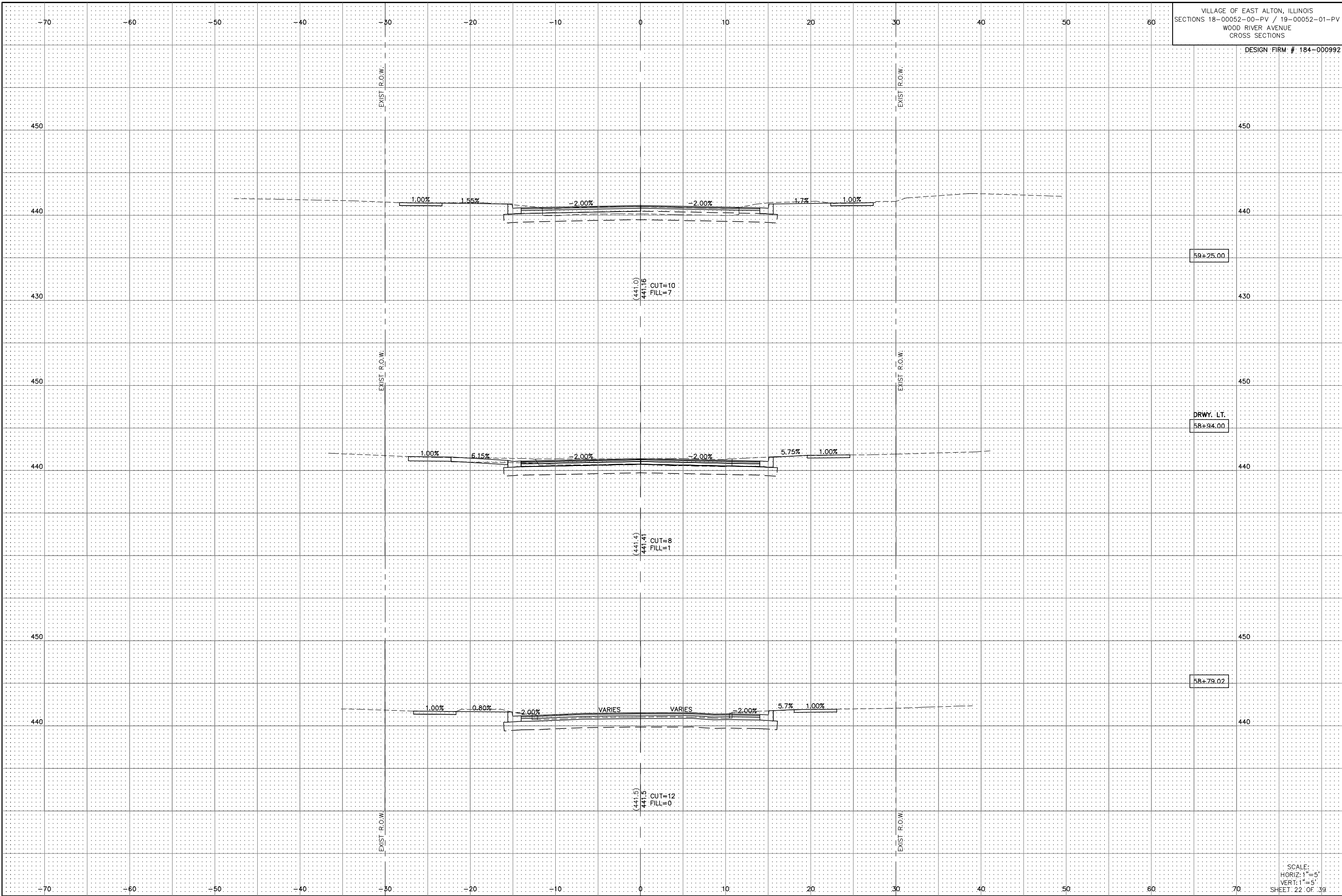
VILLAGE OF EAST ALTON, ILLINOIS
 SECTION 18-00052-00-PV / 19-00052-01-PV
 WOOD RIVER AVENUE
 PLAN AND PROFILE

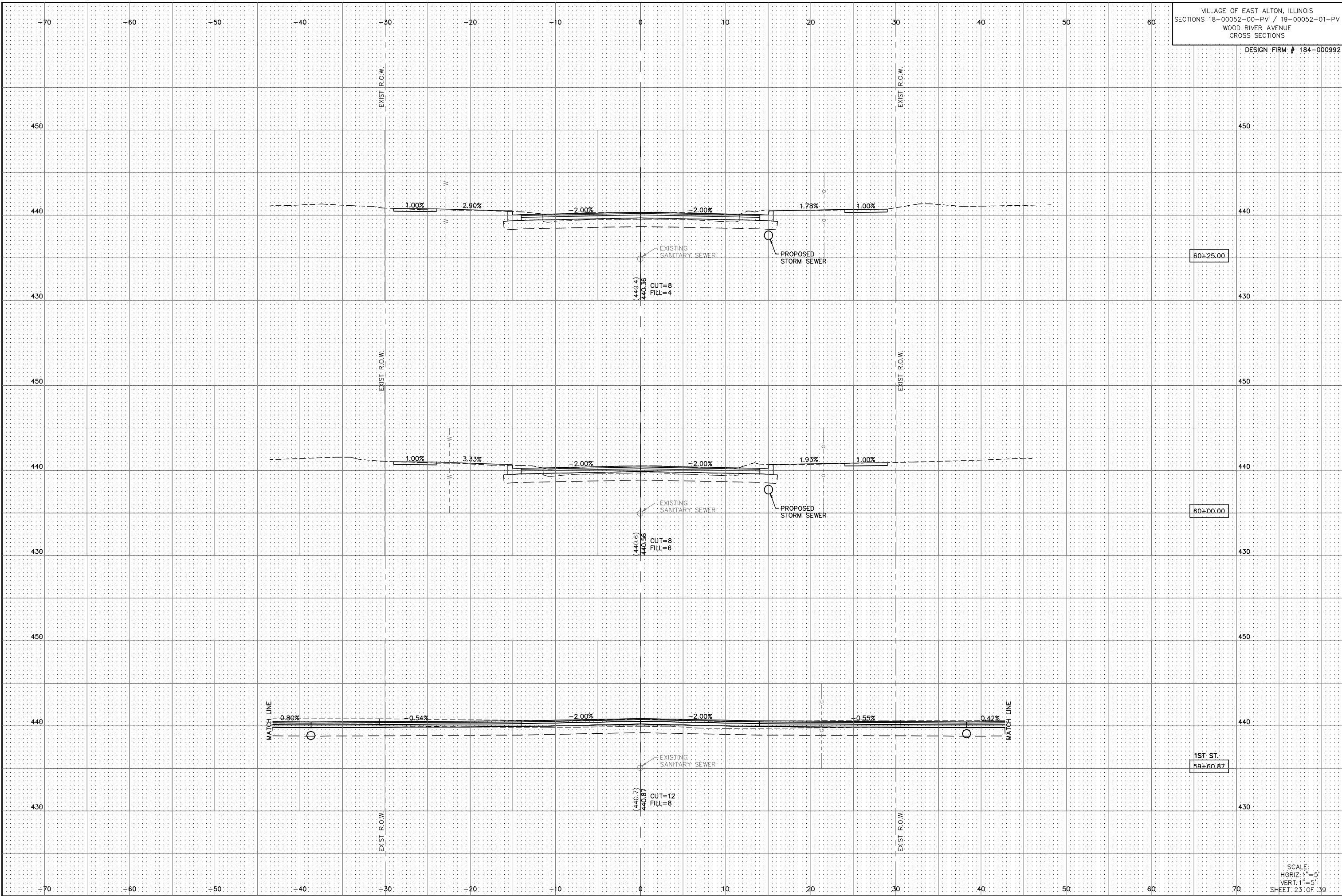
CONTRACT NO. 97754

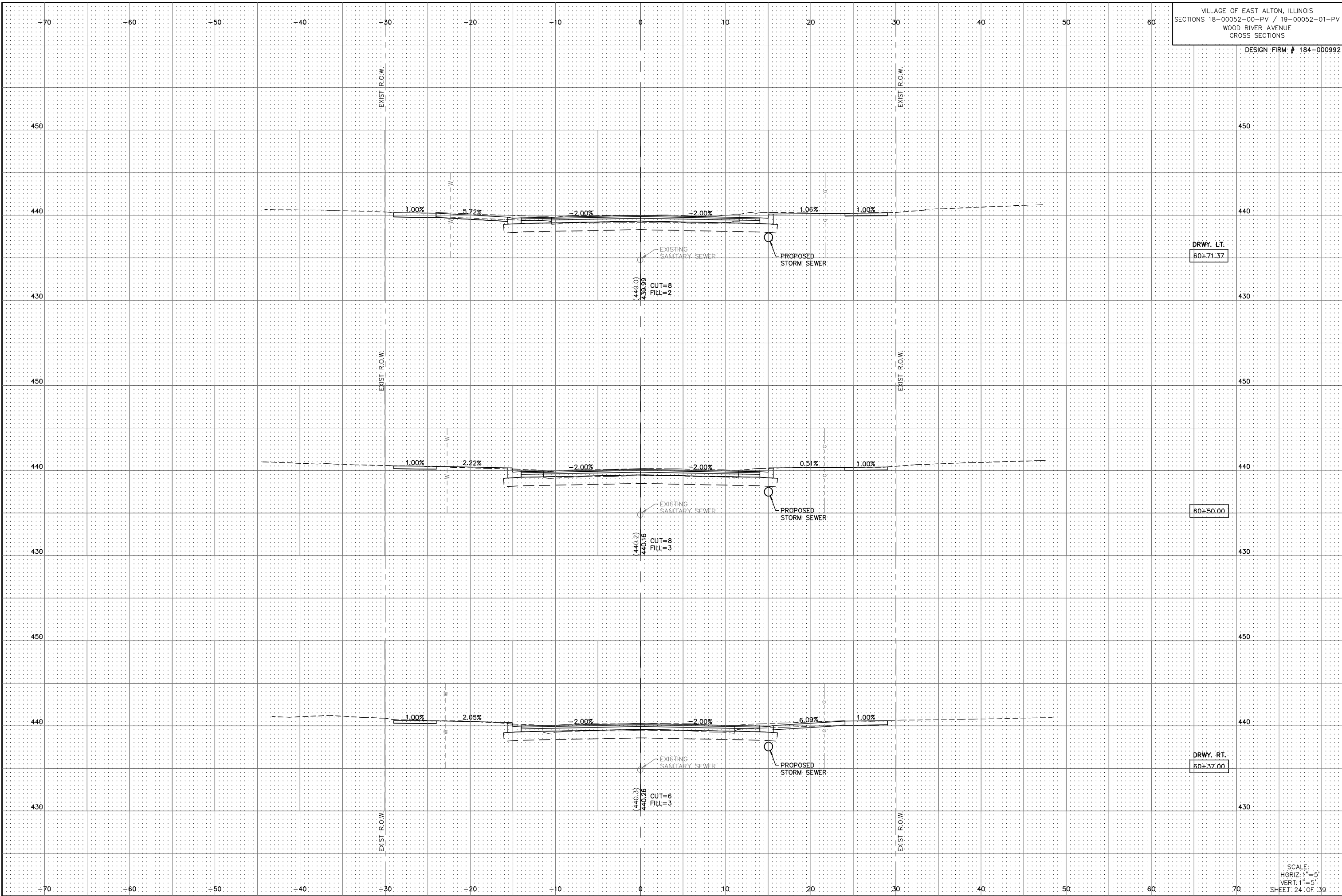
REF. BK.	PG.
JOB NO. 52008.1	
DSN. BY: DEG	
DWN. BY: CDP	
CHK. BY: DEG	
DATE: MARCH, 2021	

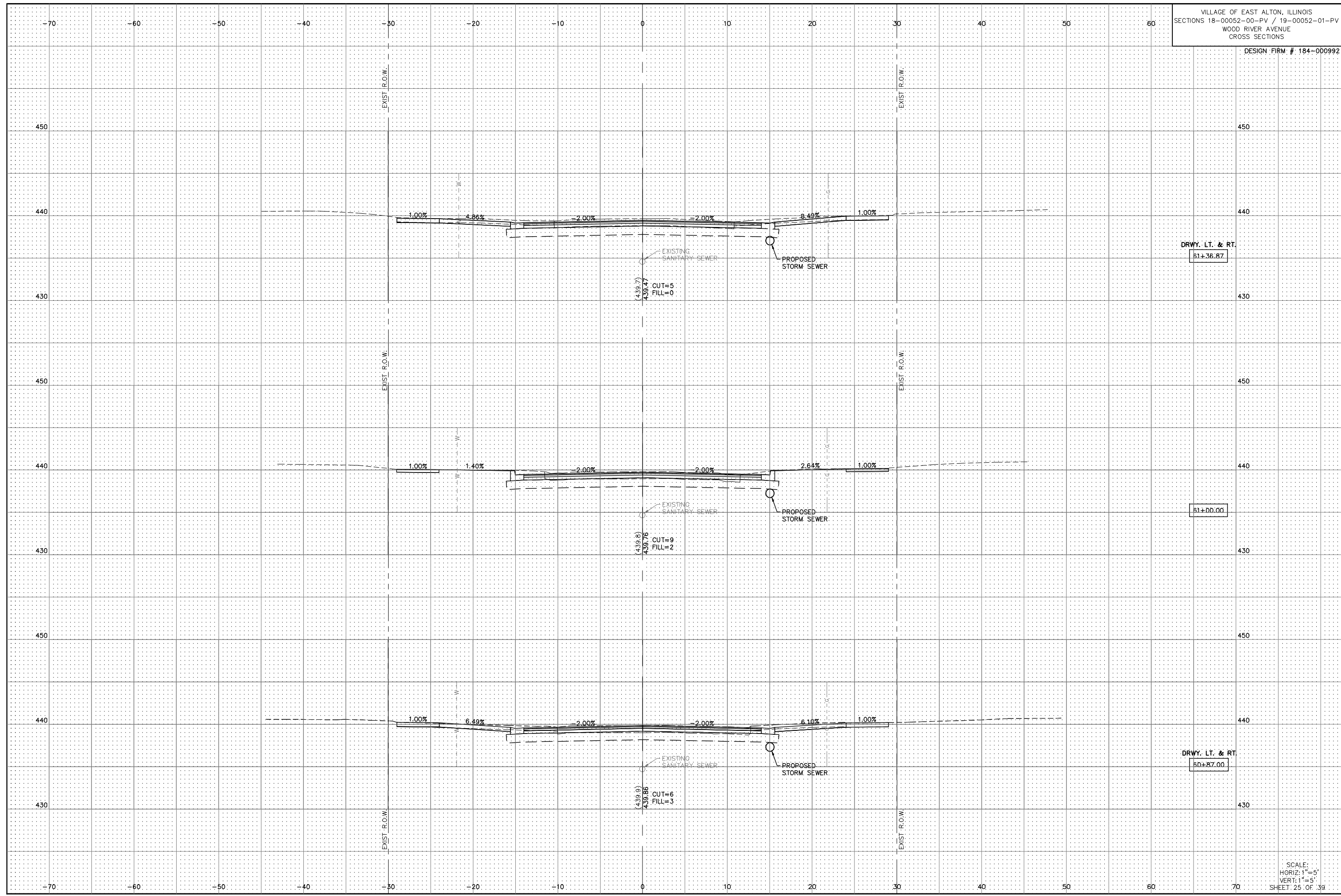
HORIZ: 1"=20'
 VERT: 1"=5'

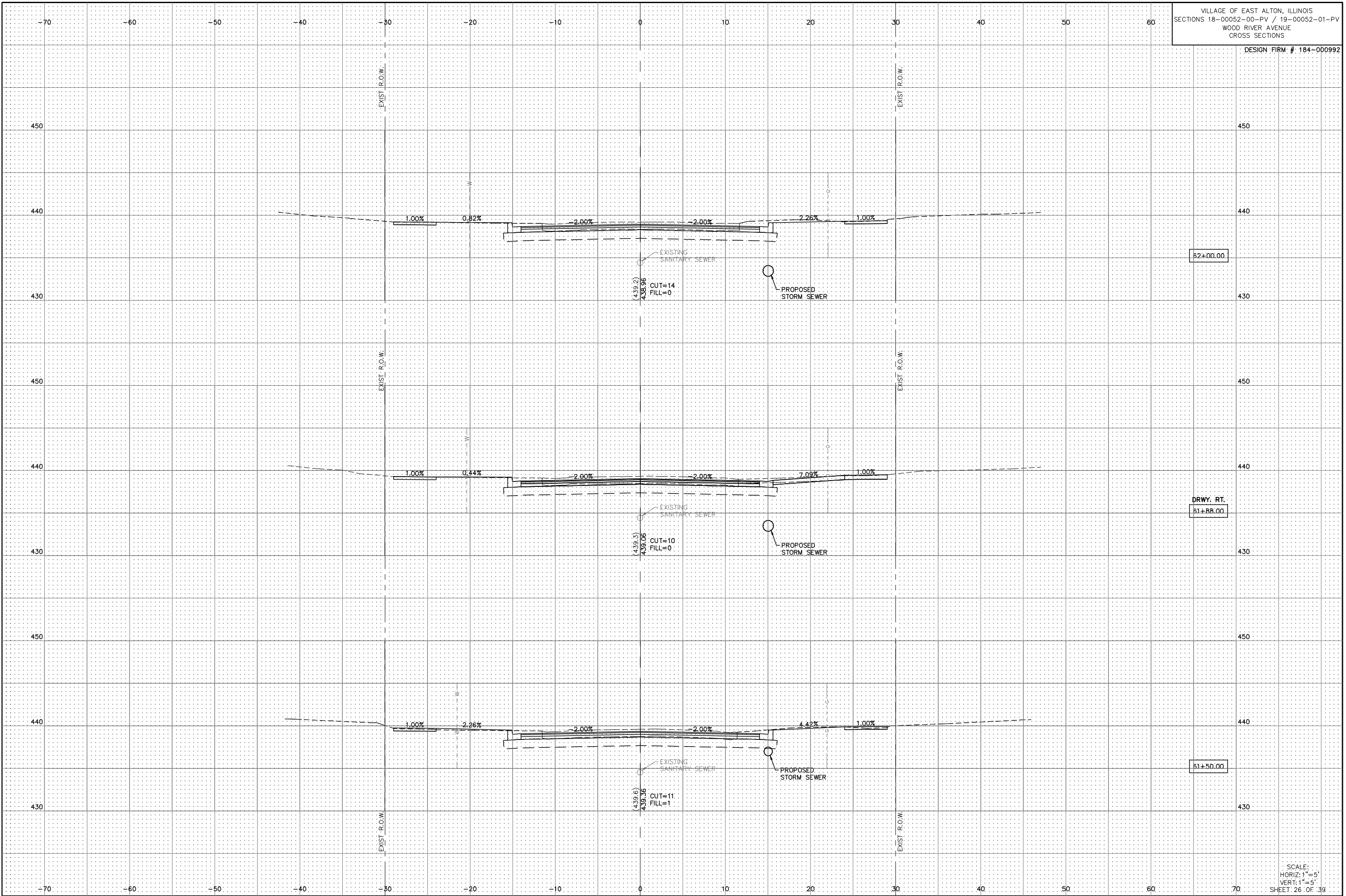
SHEET 11 OF 39

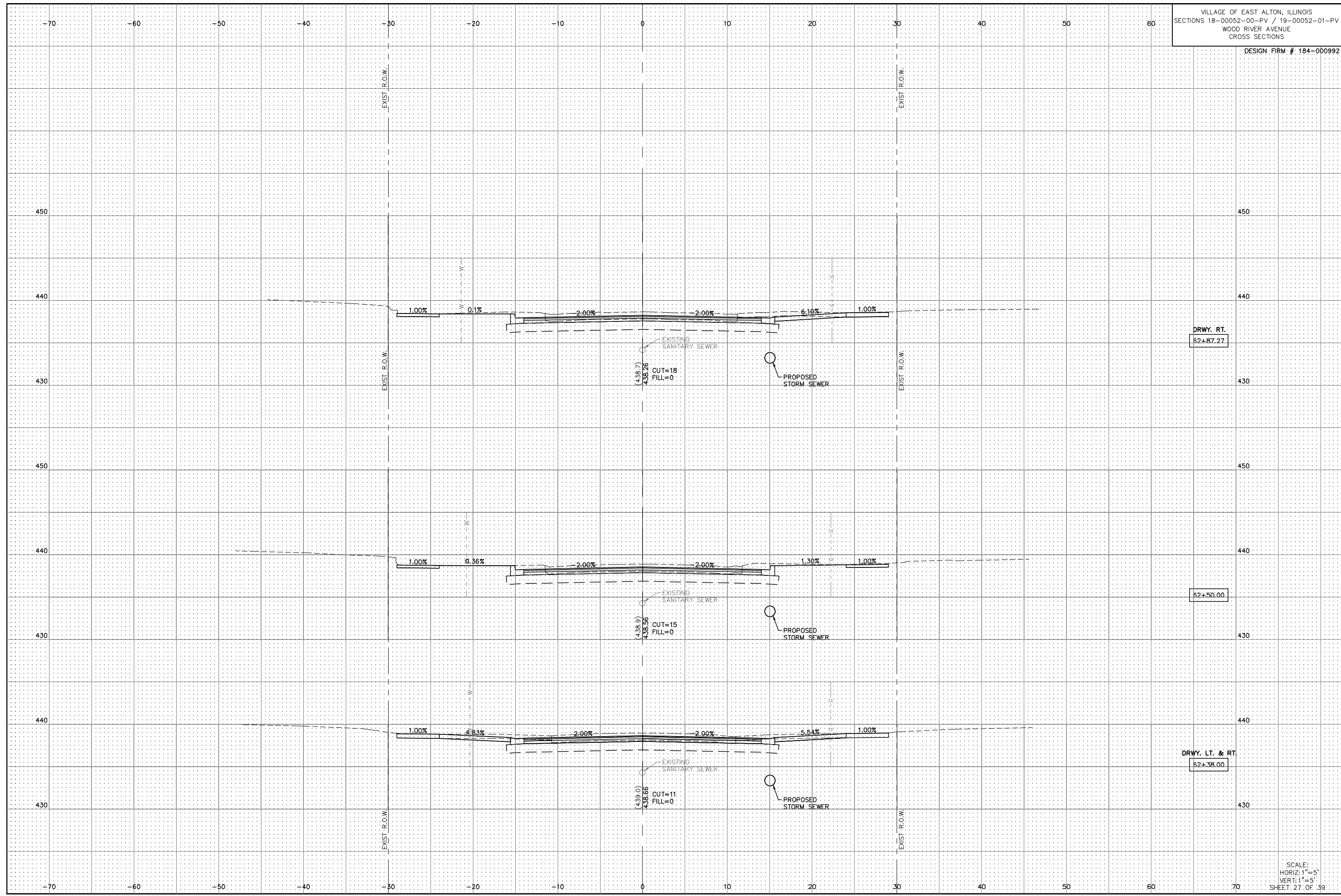








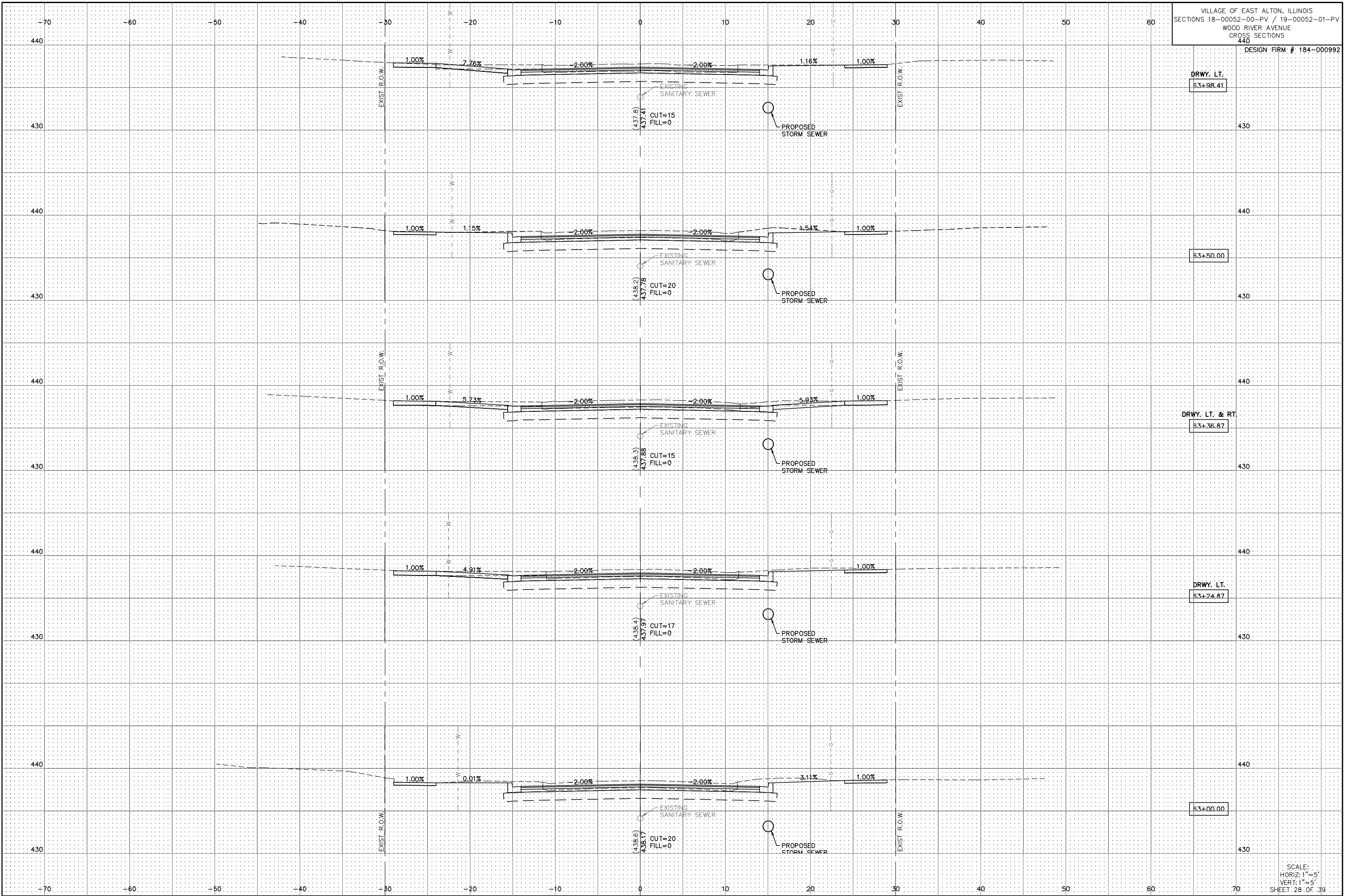


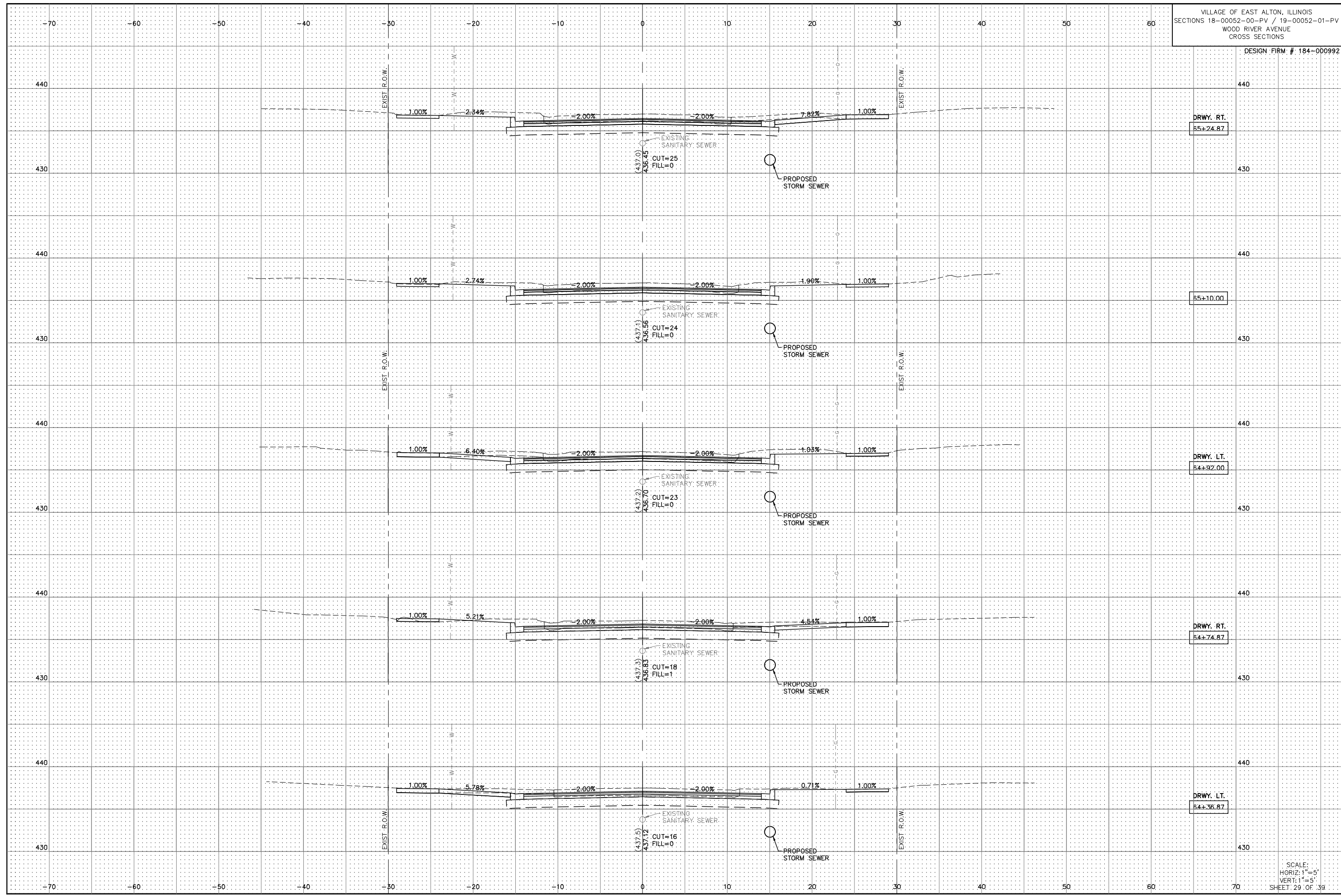


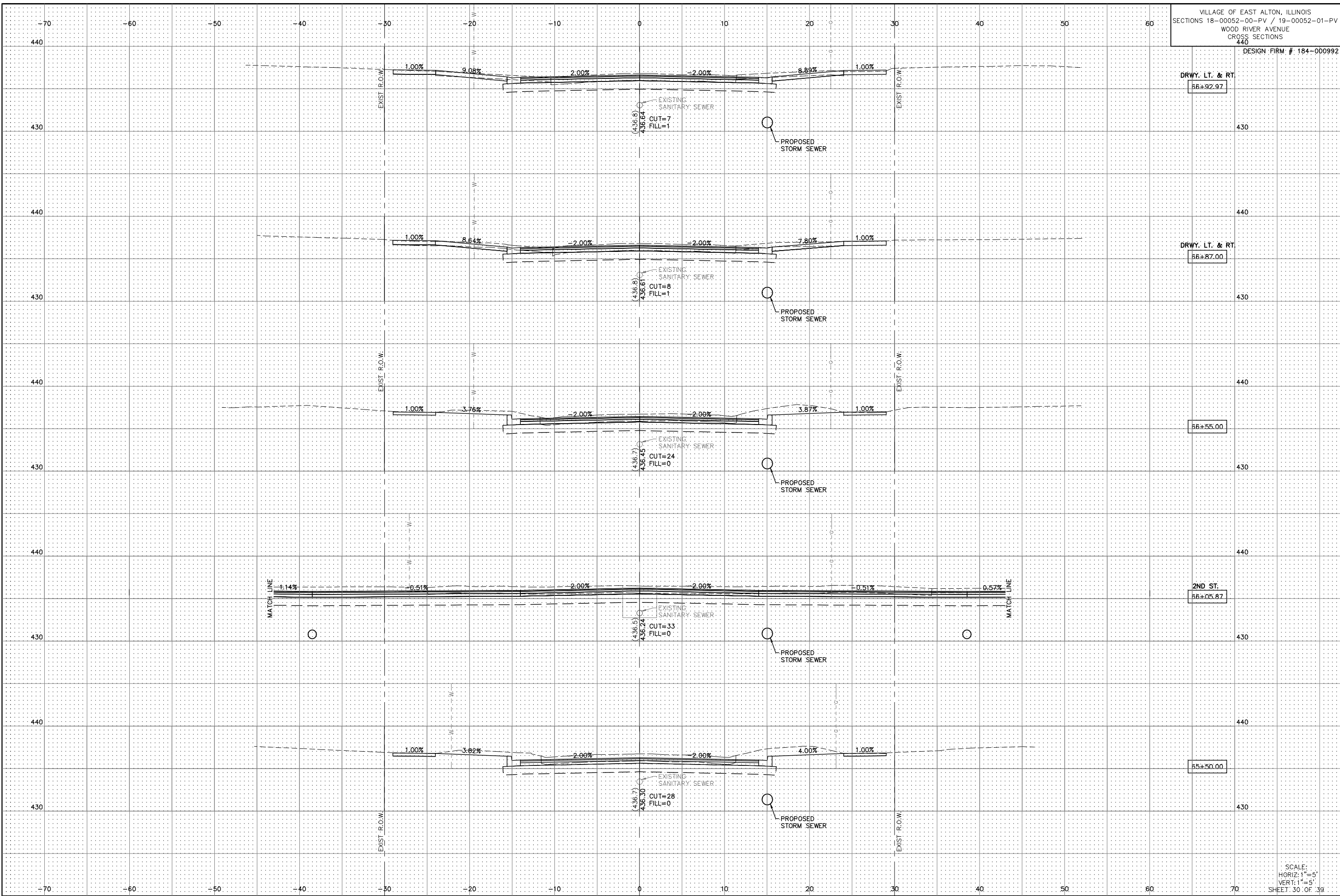
DRWY. RT.
52+87.27

52+50.00

DRWY. LT. & RT.
52+38.00







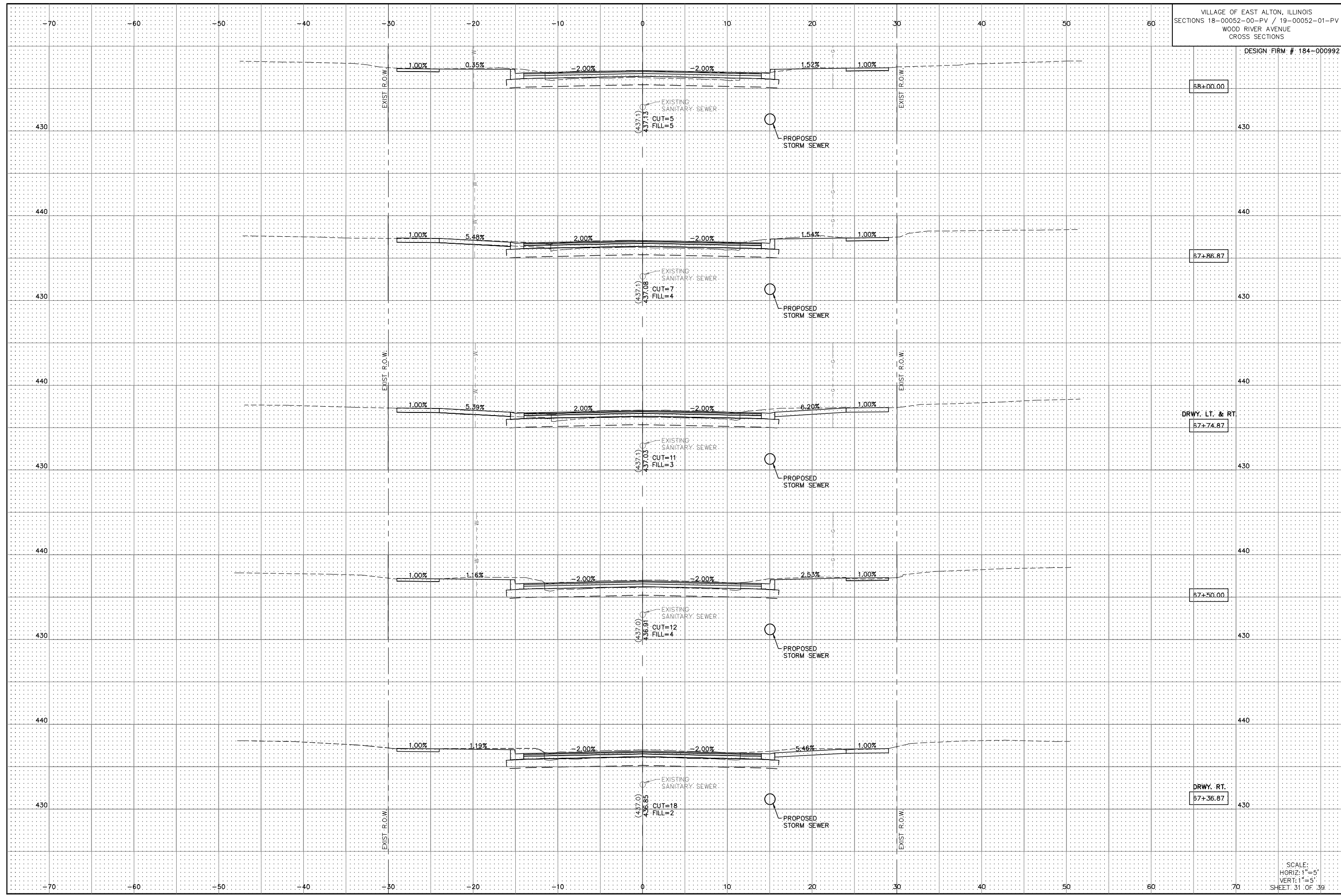
DRWY. LT. & RT.
56+92.97

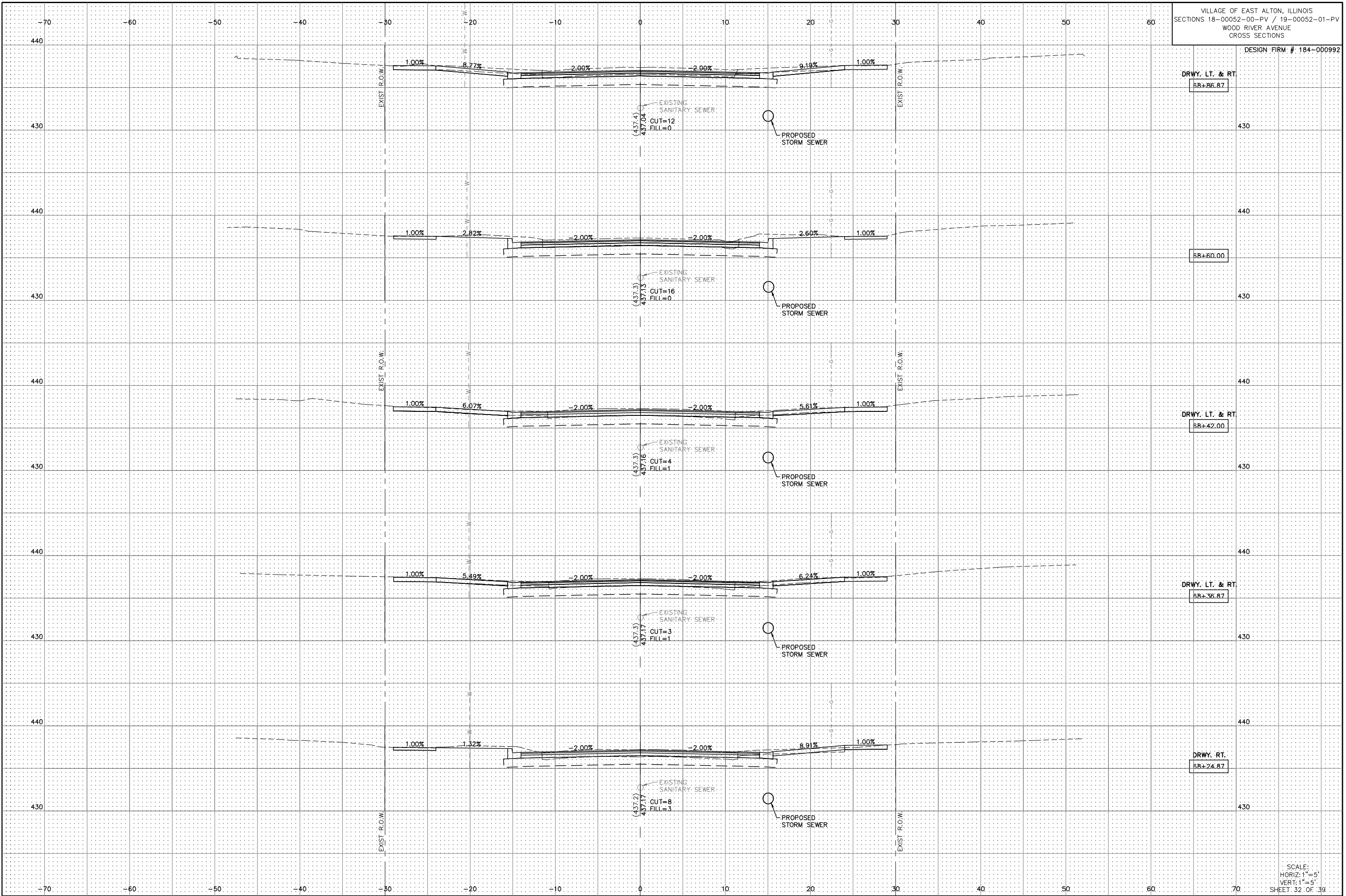
DRWY. LT. & RT.
56+87.00

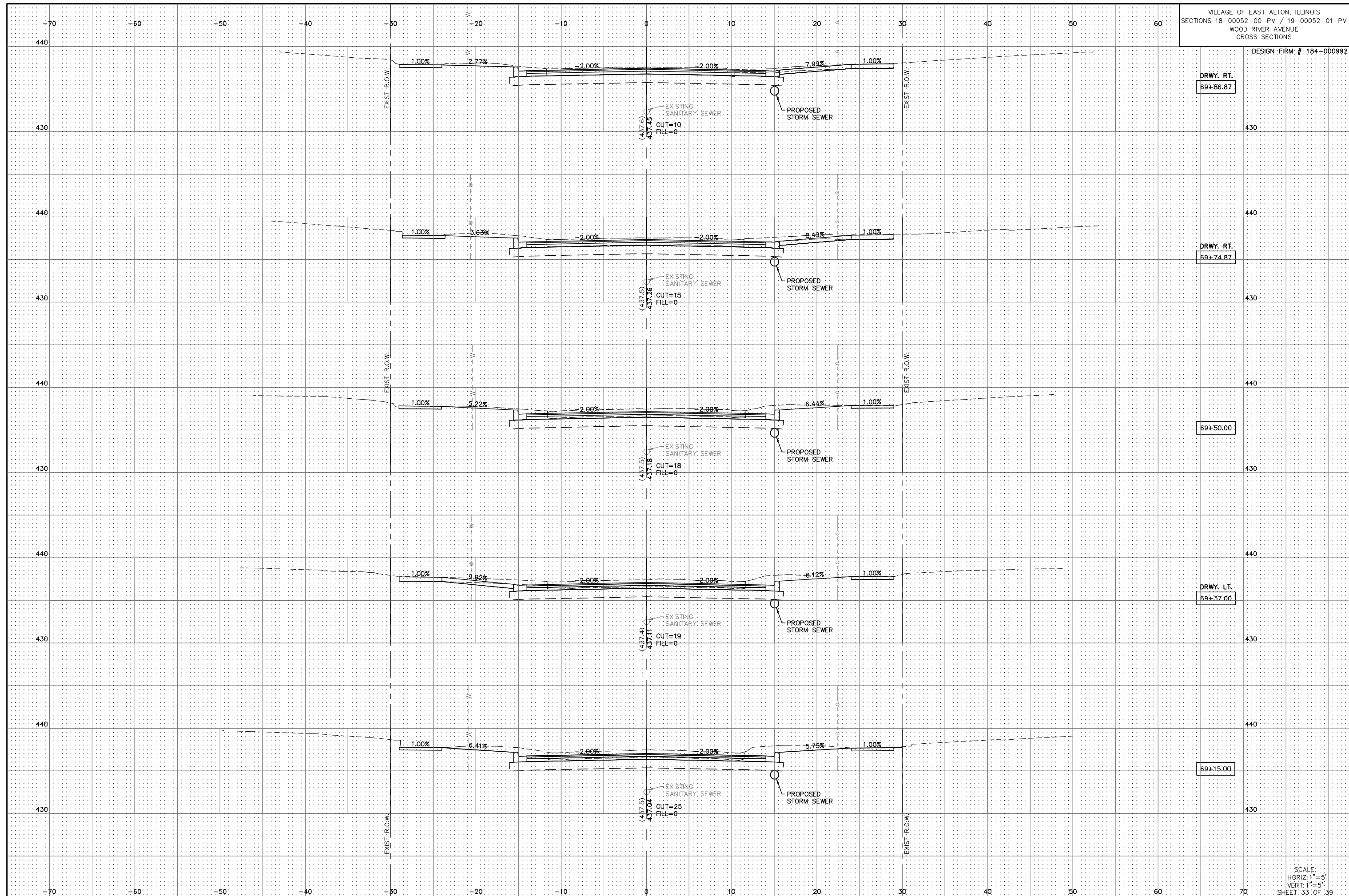
56+55.00

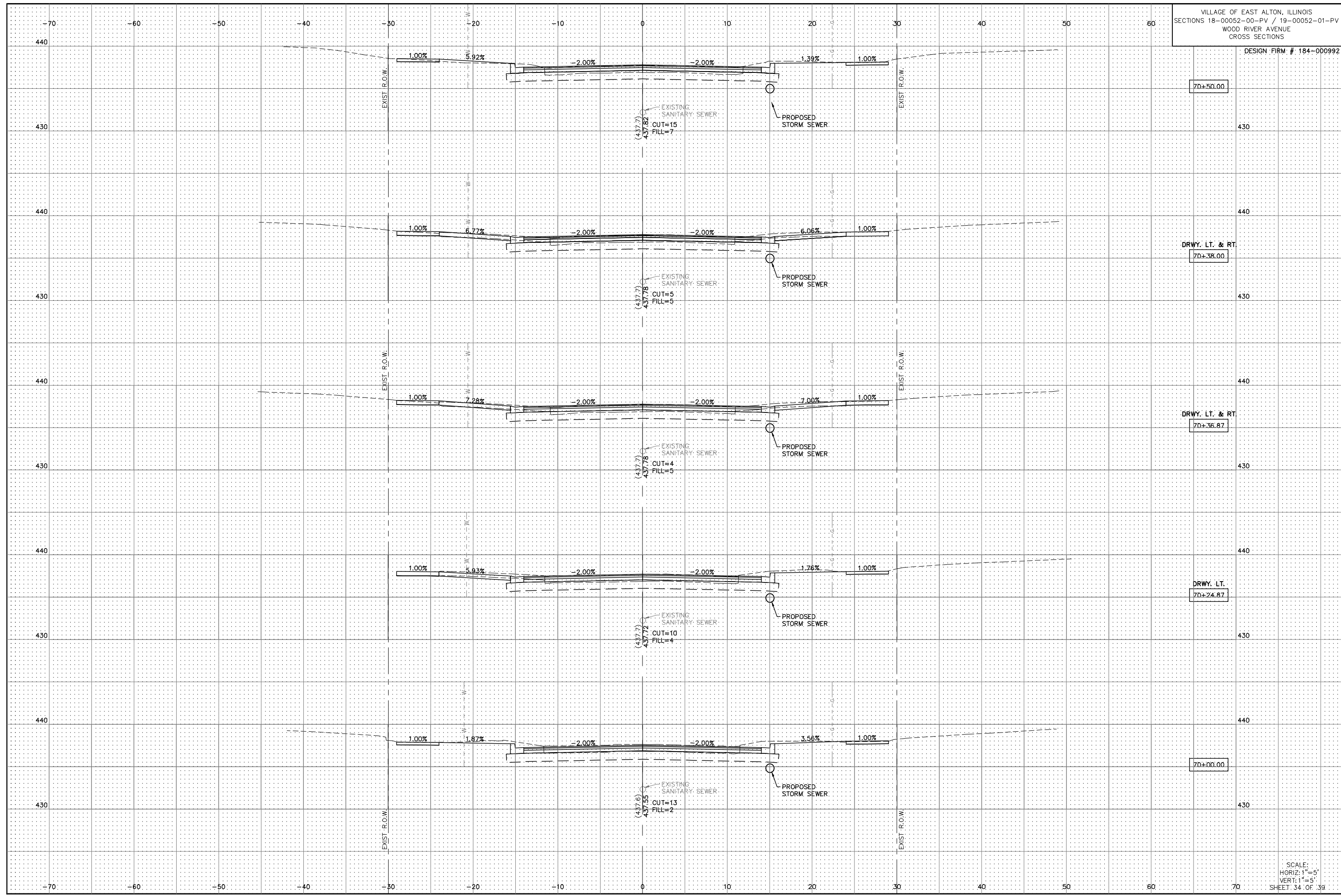
2ND ST.
56+05.87

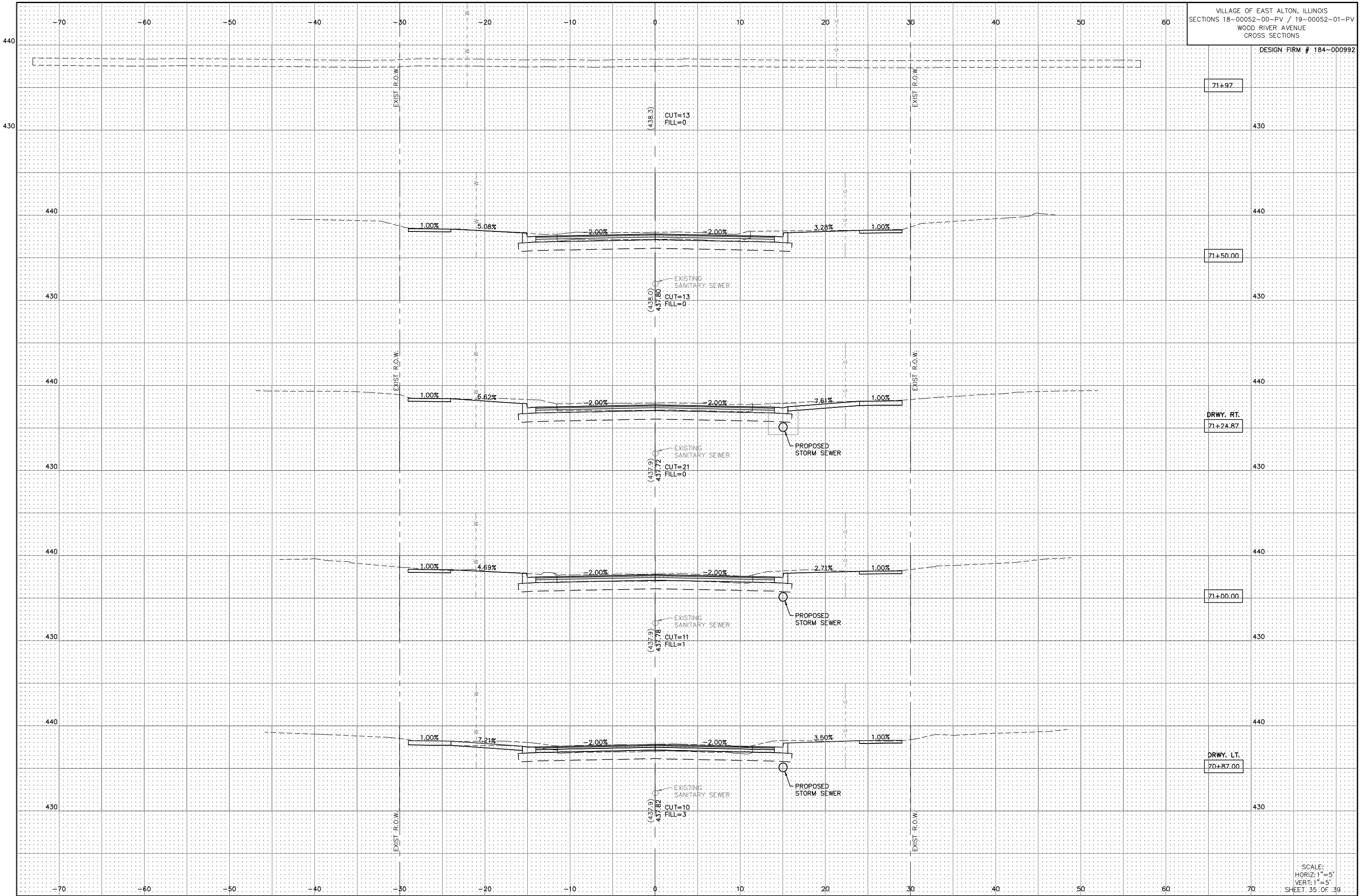
55+50.00

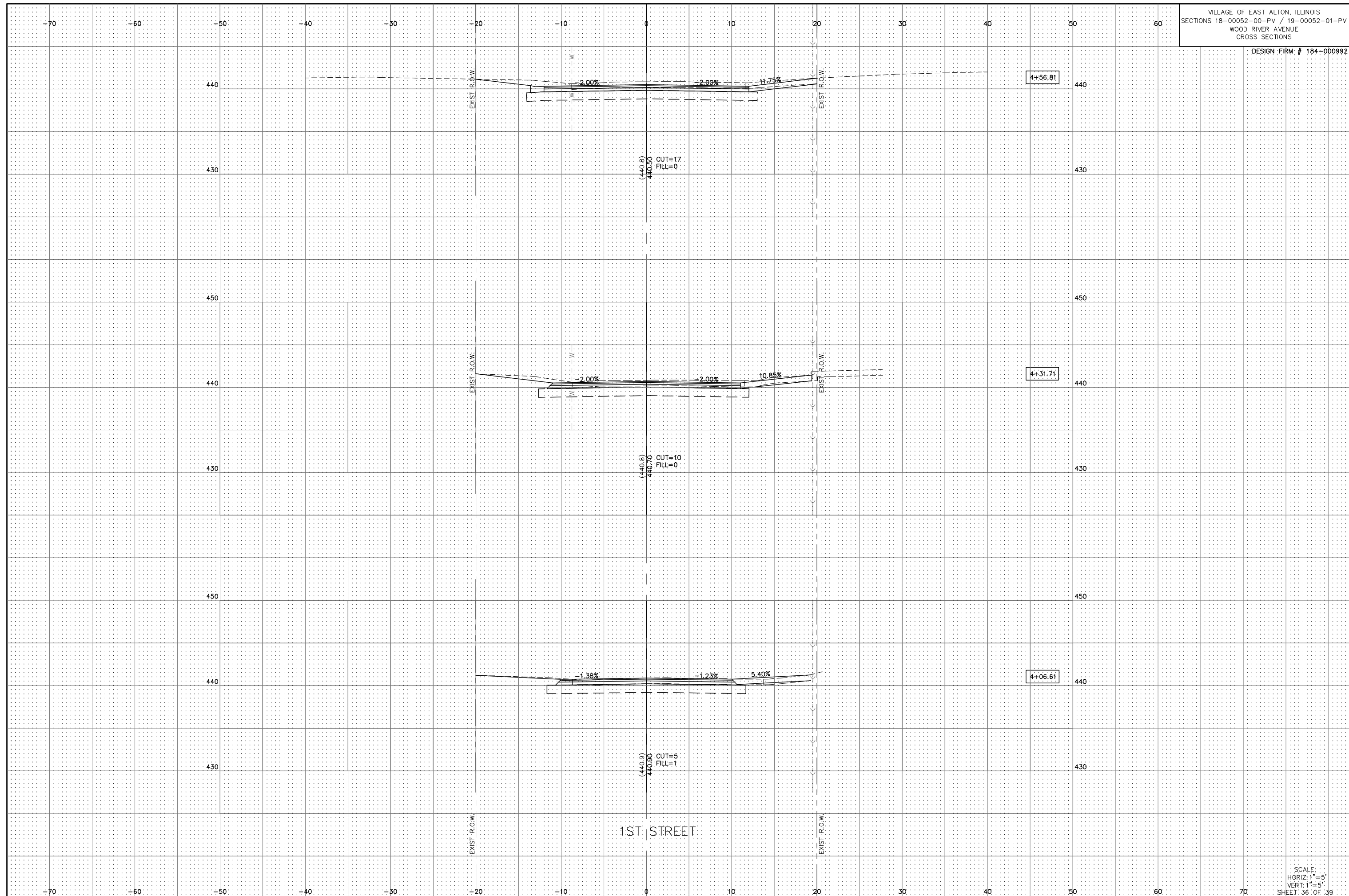


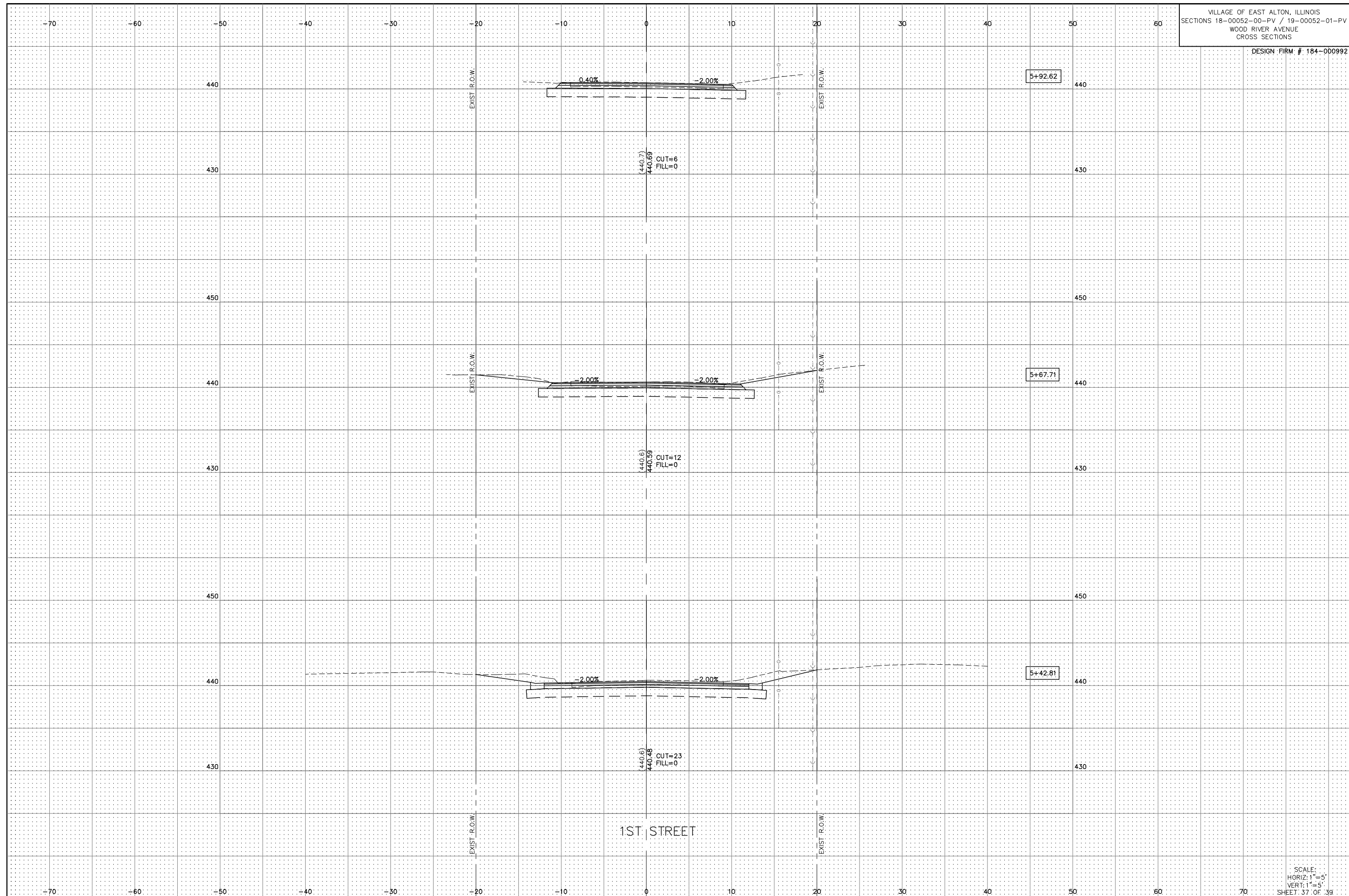












1ST STREET

