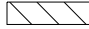

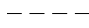


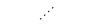
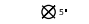


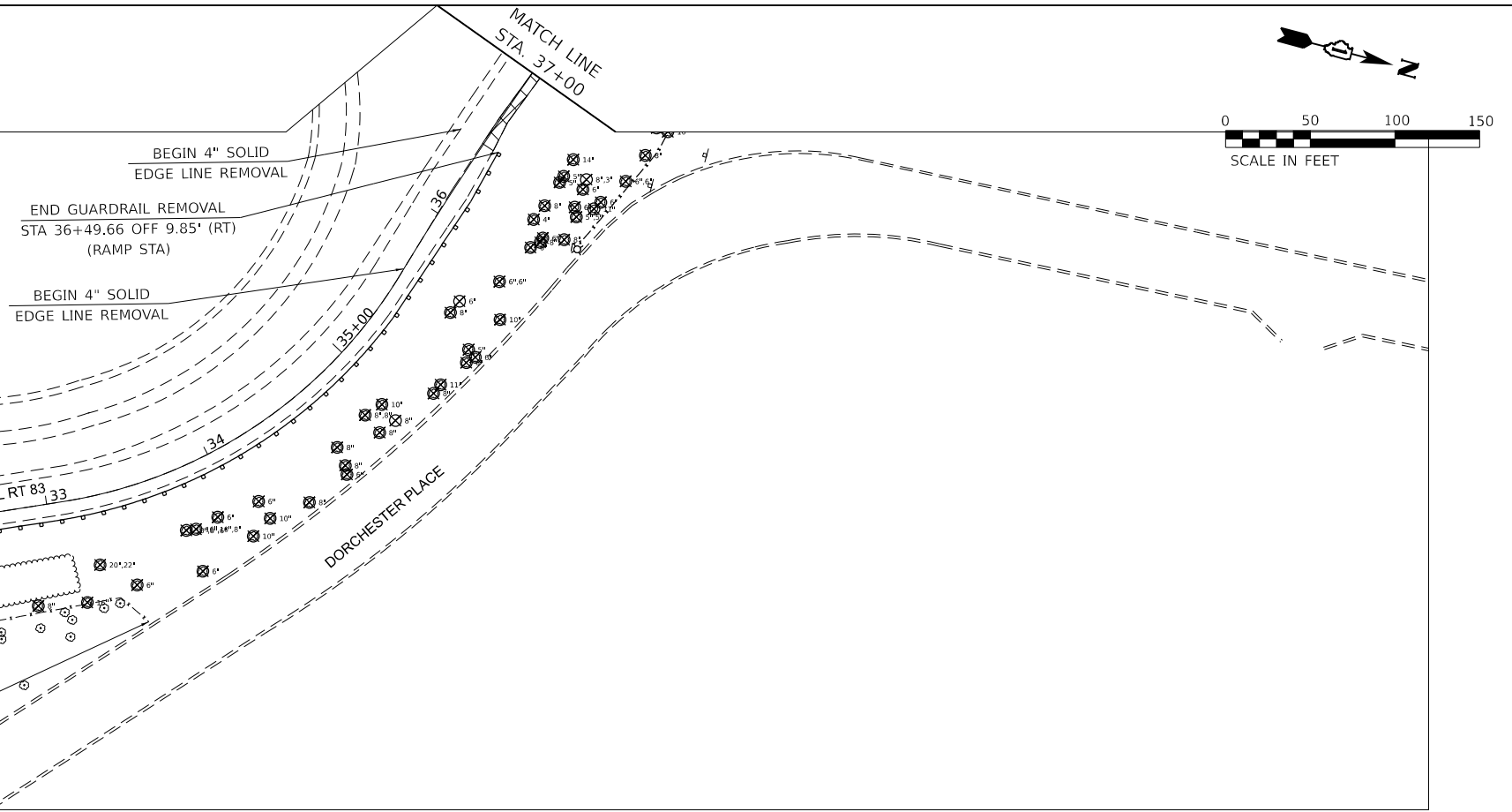
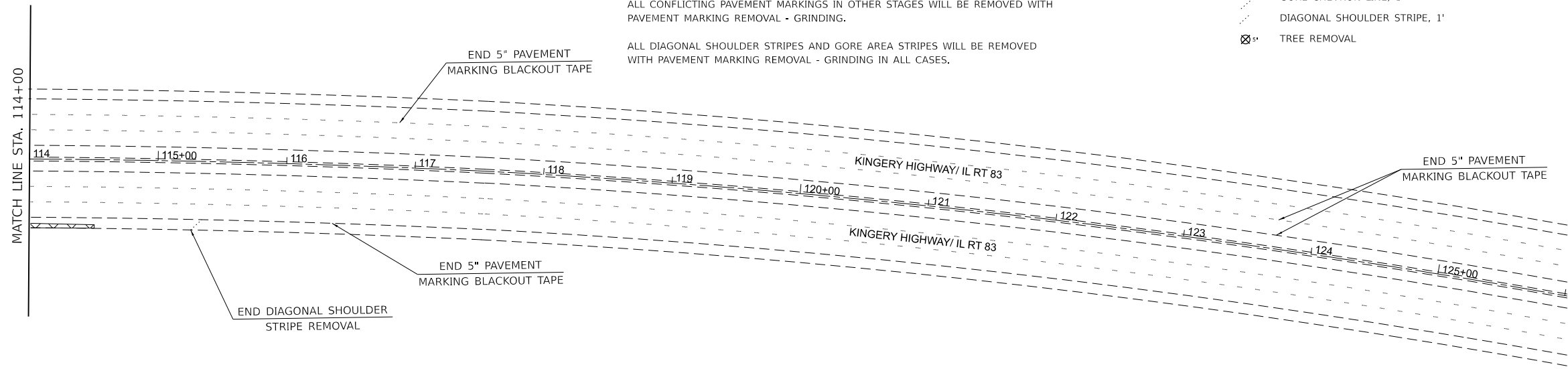
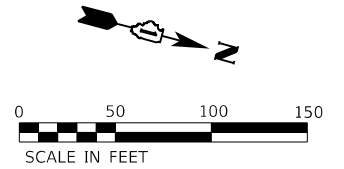
NOTE:
 EXISTING LANE AND EDGE LINES ON MAINLINE IL 83 CONFLICTING WITH MOT STAGE 1 SCHEME LOCATED SOUTH OF STA 101+14 AND NORTH OF STA 113+75 WILL BE COVERED WITH PAVEMENT MARKING BLACKOUT TAPE.

CONFLICTING STAGE 1 LANE AND EDGE LINES BETWEEN STA 101+14 AND 113+75 WILL BE REMOVED WITH PAVEMENT MARKING REMOVAL - GRINDING.

ALL CONFLICTING PAVEMENT MARKINGS IN OTHER STAGES WILL BE REMOVED WITH PAVEMENT MARKING REMOVAL - GRINDING.

ALL DIAGONAL SHOULDER STRIPES AND GORE AREA STRIPES WILL BE REMOVED WITH PAVEMENT MARKING REMOVAL - GRINDING IN ALL CASES.

- REMOVAL LEGEND AND SYMBOLS**
-  PAVEMENT REMOVAL
 -  PAVED SHOULDER REMOVAL
 -  SOLID EDGE LINE, 4"
 -  SKIP DASH LINE, 4"
 -  GORE CHEVRON LINE, 1'
 -  DIAGONAL SHOULDER STRIPE, 1'
 -  TREE REMOVAL



MODEL: Plan 2 (City) 1
 FILE NAME: P:\020055 - IDOT\040055-01-202 (ENG) - FTB 195-016 Phase II\Work\Engineering\W01 - IL83\438\500 Drawings\502_CADD_Sheets\12\2M69-sh1-removal.dgn

Bowman CONSULTING
 311 S. Wacker Drive, Suite 1950
 Chicago, Illinois 60606
 312-674-6560
 www.bowmanconsulting.com

USER NAME = khejtmanek	DESIGNED - KH	REVISED -
DRAWN - KM	REVISOR -	
CHECKED - AP	REVISOR -	
DATE - 3/10/2021	REVISOR -	

**STATE OF ILLINOIS
 DEPARTMENT OF TRANSPORTATION**

REMOVAL PLAN			
SCALE: 1"=50'	SHEET 2	OF 2 SHEETS	STA. VAR. TO STA. VAR.

F.A.P. RTE. 344	SECTION 2020-196-T	COUNTY DUPAGE	TOTAL SHEETS 122	SHEET NO. 22
CONTRACT NO. 62M69			ILLINOIS FED. AID PROJECT	