

F.A.P. RITE	SECTION	COUNTY	TOTAL SHEETS	SHEET NO.
310	(35)I-1,PP	WARREN	9	1
		ILLINOIS	CONTRACT NO. 68G01	

STATE OF ILLINOIS  
DEPARTMENT OF TRANSPORTATION

# PROPOSED HIGHWAY PLANS

FAP ROUTE 310 (US 67 /IL 110)  
SECTION (35)I-1,PP  
CONTRACT MAINTENANCE  
WARREN COUNTY  
C-94-004-21

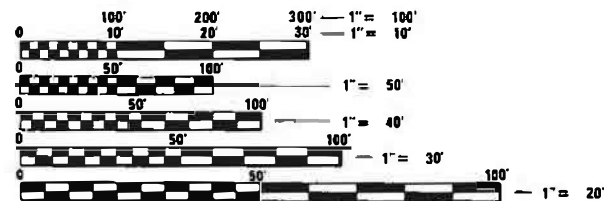
**INDEX OF SHEETS**

- 1 COVER SHEET
- 2 COMMITMENTS AND GENERAL NOTES
- 3 SUMMARY OF QUANTITIES
- 4 - 5 SCHEDULE OF QUANTITIES
- 6 LINE DIAGRAM
- 7 TYPICAL SECTION
- 8 - 9 DISTRICT STANDARDS

**HIGHWAY STANDARDS**

- 701400-10
- 701406-12
- 701426-09
- 701901-08

- ADT: 3,800 (2019)
- HCV: 825 (21.71%)
- SU: 675 (17.76%)
- MU: 150 (3.95%)

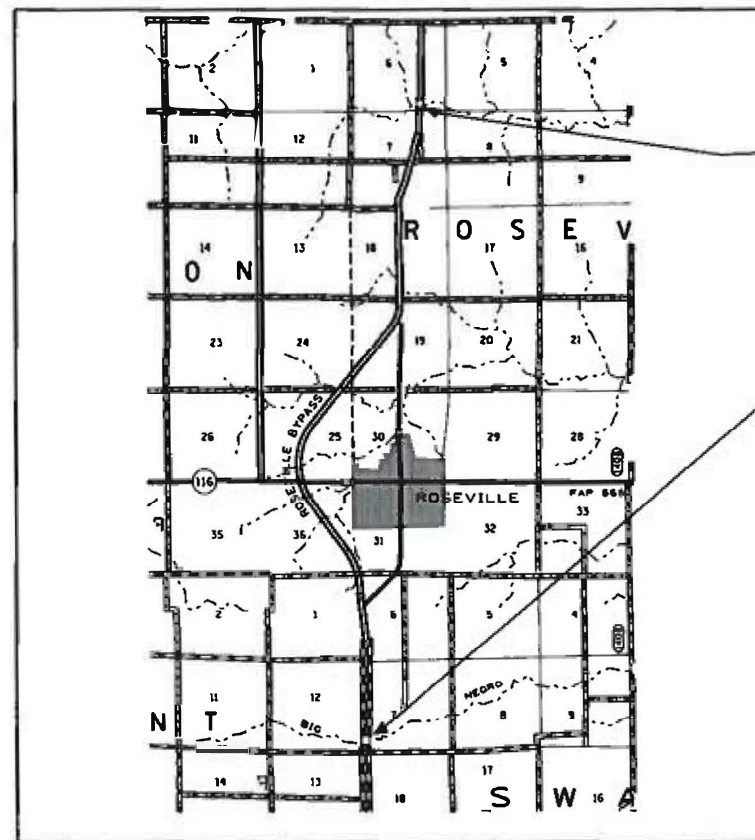


FULL SIZE PLANS HAVE BEEN PREPARED USING STANDARD ENGINEERING SCALES. REDUCED SIZED PLANS WILL NOT CONFORM TO STANDARD SCALES. IN MAKING MEASUREMENTS ON REDUCED PLANS, THE ABOVE SCALES MAY BE USED.

J.U.L.I.E.  
JOINT UTILITY LOCATION INFORMATION FOR EXCAVATION  
1-800-892-0123  
OR 811

PROJECT ENGINEER: RICHARD DOTSON (309)-671-3455  
PROJECT MANAGER: MICHAEL JACOBS (309)-671-3460

CATALOG NO. 036116-00D  
CONTRACT NO. 68G01



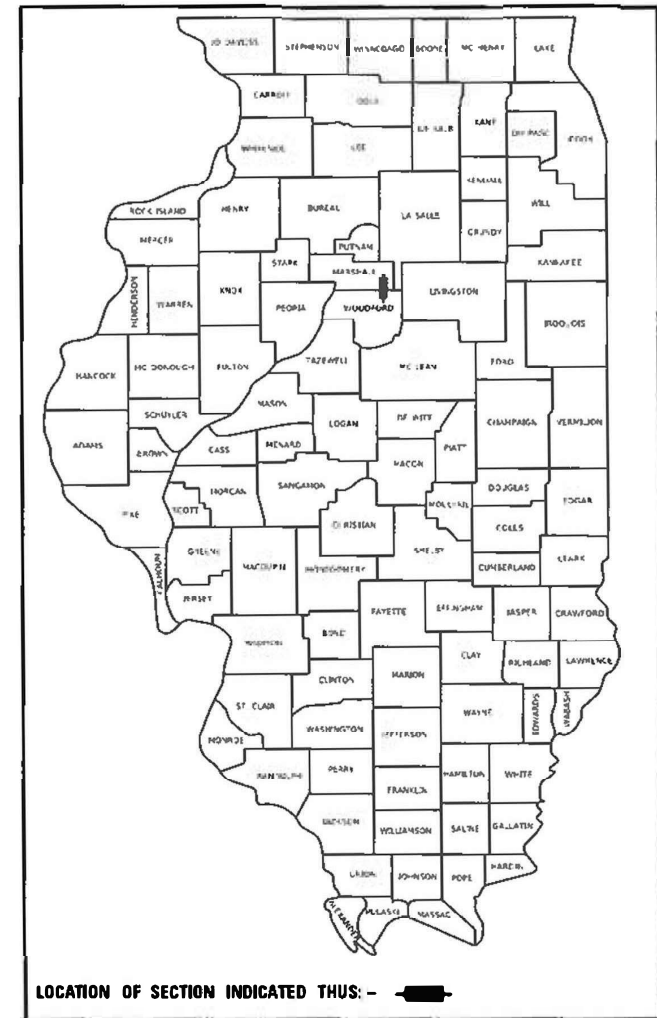
PROJECT ENDS  
STA. 1186 + 41

PROJECT BEGINS  
STA. 806 + 79



GROSS LENGTH = 37,962 FT. = 7.21 MILES  
NET LENGTH = 37,962 FT. = 7.21 MILES

D-94-003-21



**PROJECT DESCRIPTION:**

PATCHING AND PAVEMENT REPAIRS TO  
US 67 FROM N OF THE ROSEVILLE BYPASS  
TO S OF THE ROSEVILLE BYPASS

STATE OF ILLINOIS  
DEPARTMENT OF TRANSPORTATION

SUBMITTED March 25, 2021  
Richard Dotson  
REGION THREE ENGINEER

May 7, 2021 [Signature]  
ENGINEER OF DESIGN AND ENVIRONMENT

May 7, 2021 [Signature]  
DIRECTOR OF HIGHWAYS PROJECT IMPLEMENTATION 13

**PRINTED BY THE AUTHORITY  
OF THE STATE OF ILLINOIS**

**COMMITMENTS**

Commitments are not to be altered without the written approval of all parties to which the commitment was made.

**NO COMMITMENTS HAVE BEEN MADE FOR THIS PROJECT**

**GENERAL NOTES:**

**PROPERTY OWNER ACCESS REQUIREMENTS**

Access must be maintained to all existing properties during construction per Article 107.09 unless arrangements are made in writing by the Contractor with the property owners with a copy to the Engineer for short-term closures.

**HOT-MIX ASPHALT MIXTURE REQUIREMENTS**

<b>Mixture Use(s):</b>	<b>Patching and Longitudinal Joint Repair</b>
<b>AC/PC:</b>	<b>SBS OR SBR 64-28</b>
<b>Design Air Voids:</b>	<b>4% AT N = 50</b>
<b>Mixture Composition:</b>	<b>IL 9.5</b>
<b>(Gradation Mixture):</b>	
<b>Friction Aggregate:</b>	<b>Mix C</b>
<b>Quality Management:</b>	<b>QC/QA</b>

**Notes:**

- 1) Individual lift thickness of each mix type will be no less than 3 times nominal maximum aggregate size and no more than 6 times nominal maximum.
- 2) For design purposes, mixture weight for all mixes is determined to be 112.0 lb/s.y/in., unless otherwise noted.
- 3) Sublot sizes for PFP and QCP mixes will be 1,000 tons, unless otherwise agreed to by the Engineer and the paving Contractor.

**ENVIRONMENTAL REVIEWS**

Prior to the use of any proposed borrow areas, use areas (temporary access roads, detours, run-arounds, etc.) and/or waste areas, the Contractor shall file the required environmental resource request surveys according to Section 107.22 of the Standard Specifications. These surveys are required in order for the Department to conduct cultural and biological resource surveys for the proposed site.

The required environmental resource documentation shall include the following:

- \* BDE Form 2289 (Cultural and Natural Resources Review of Borrow Areas)
- \* BDE Form 2290 (Waste/Use Area Review)
- \* A location map showing the size limits and location of the use area
- \* Color photographs depicting the use area
- \* Borrow Area Entry Agreement form - D4 PI0101

Prior to any waste materials being removed from the construction site the required environmental resource surveys shall be obtained and filed by the Contractor. Excess waste products removed from the construction site shall be disposed of as required in Section 202.03 of the Standard Specifications.

Any protruding metal bars shall be removed prior to the disposal of broken concrete at approved disposal sites.

Please note that a minimum of four weeks shall be allowed for the District to obtain the required environmental clearances and six weeks for the required borrow site environmental clearances.

MODEL: DEFAULT  
FILE NAME: p:\plnroom\dot\illinois.gov\PI\DOT\Documents\DOT\_Offices\District\_4\Projects\04\_68G01\CADD\data\CADD\Drawings\04\XXXX-CADD.dgn

USER NAME = nichtingpj	DESIGNED -	REVISED -	<b>STATE OF ILLINOIS DEPARTMENT OF TRANSPORTATION</b>	<b>COMMITMENTS, GENERAL NOTES AND JOB SPECIFIC NOTES</b>	F.A.I. RTE.	SECTION	COUNTY	TOTAL SHEETS	SHEET NO.
PLOT SCALE = 1200.0000' / in.	DRAWN -	REVISED -			310	(35)I-1,PP	WARREN	9	2
PLOT DATE = 3/23/2021	CHECKED -	REVISED -			CONTRACT NO. 68G01				
	DATE -	REVISED -			ILLINOIS FED. AID PROJECT				
				SCALE:	SHEET	OF	SHEETS	STA.	TO STA.

CODE NO.	ITEM	UNIT	TOTAL QUANTITY	CONST. CODE
				WARREN
				COUNTY
				100% STATE 0006
67100100	MOBILIZATION	L SUM	1	1
70100700	TRAFFIC CONTROL AND PROTECTION, STANDARD 701406	L SUM	1	1
70107025	CHANGEABLE MESSAGE SIGN	CAL DA	10	10
70300100	SHORT-TERM PAVEMENT MARKING	FOOT	2306	2306
70300150	SHORT-TERM PAVEMENT MARKING REMOVAL	SQ FT	769	769
* 78001110	PAINT PAVEMENT MARKING - LINE 4"	FOOT	150449	150449
* 78001130	PAINT PAVEMENT MARKING - LINE 6"	FOOT	18980	18980
* 78001140	PAINT PAVEMENT MARKING - LINE 8"	FOOT	11910	11910
78300200	RAISED REFLECTIVE PAVEMENT MARKER REMOVAL	EACH	207	207
X0556100	PARTIAL DEPTH PATCHING (SPECIAL)	SQ YD	858	858
X4421000	PARTIAL DEPTH PATCHING	TON	108	108
Z0033600	LONGITUDINAL JOINT REPAIR	FOOT	23063	23063

\*= SPECIALTY ITEM

MODEL: DEFAULT  
FILE NAME: p:\plnroom\dot\illinois.gov\PI\DOT\Documents\DOT Offices\District 4\Projects\04\_68G01\CADDData\CADDDrawings\04xxxx-CADD.dgn

USER NAME = nichtingpj	DESIGNED -	REVISED -
	DRAWN -	REVISED -
PLOT SCALE = 1200.0000' / in.	CHECKED -	REVISED -
PLOT DATE = 3/23/2021	DATE -	REVISED -

**STATE OF ILLINOIS  
DEPARTMENT OF TRANSPORTATION**

**SUMMARY OF QUANTITIES**

SCALE: SHEET OF SHEETS STA. TO STA.

F.A.P. RTE.	SECTION	COUNTY	TOTAL SHEETS	SHEET NO.
310	(35)I-1,PP	WARREN	9	3
CONTRACT NO. 68G01			ILLINOIS FED. AID PROJECT	

**PARTIAL DEPTH PATCHING TABLE**

LOCATION	WIDTH	LENGTH	NUMBER OF PATCHES								PARTIAL DEPTH PATCHING (SPECIAL)	PARTIAL DEPTH PATCHING 2.25"	
			NORTH BOUND				SOUTH BOUND						
			PASSING LANE	CENTER LINE	DRIVING LANE	SHOULDER	PASSING LANE	CENTER LINE	DRIVING LANE	SHOULDER/JOINT			
<b>US 67</b>	FOOT	FOOT										X0556100	X4421000
												SQ YD	TON
<b>BIG NEGRO BRIDGE TO 50TH AVE</b>													
	12	10			1							13.33	1.68
	3	1200				1						400.00	50.40
<b>50TH AVE TO BUS 67</b>													
	12	60			2							160.00	20.16
	12	25			1							33.33	4.20
<b>BUS 67 TO 60TH AVE</b>													
	6	60	1									40.00	5.04
<b>60TH AVE TO IL 116</b>													
<b>IL 116 TO 80TH AVE</b>													
<b>80TH AVE TO 90TH AVE</b>													
<b>90TH AVE TO 100TH AVE</b>													
	12	30						1				40.00	5.04
<b>100TH AVE TO 105TH AVE</b>													
<b>105TH AVE TO PICAYUNE BR</b>													
<b>SUBTOTAL</b>											<b>686.67</b>	<b>86.52</b>	
<b>WINTER BREAK UP (+25%)</b>											<b>171.67</b>	<b>21.63</b>	
<b>TOTAL</b>											<b>858</b>	<b>108</b>	

MODEL: DEFAULT  
FILE NAME: p:\planning\dot\illinois\gov\p\l\dot\1\Documents\DOT Offices\District 4\Projects\04\_68G01\CADDData\CADDDrawings\04xxxx-CADD.dgn

USER NAME = nichtingpj	DESIGNED -	REVISED -
	DRAWN -	REVISED -
PLOT SCALE = 1200.0000 ' / in.	CHECKED -	REVISED -
PLOT DATE = 3/23/2021	DATE -	REVISED -

**STATE OF ILLINOIS  
DEPARTMENT OF TRANSPORTATION**

<b>SCHEDULE OF QUANTITIES</b>				
SCALE:	SHEET	OF	SHEETS	STA. TO STA.

F.A.P. RTE.	SECTION	COUNTY	TOTAL SHEETS	SHEET NO.
310	(35)I-1,PP	WARREN	9	4
CONTRACT NO. 68G01				
ILLINOIS FED. AID PROJECT				

LONGITUDINAL JOINT REPAIR						
LOCATION	Z0033600					
	NORTH BOUND			SOUTH BOUND		
	INSIDE EDGE	CENTER LINE	OUTSIDE EDGE	INSIDE EDGE	CENTER LINE	OUTSIDE EDGE
<b>US 67</b>	FOOT	FOOT	FOOT	FOOT	FOOT	FOOT
<b>BIG NEGRO BRIDGE TO 50TH AVE</b>						
<b>50TH AVE TO BUS 67</b>						
<b>BUS 67 TO 60TH AVE</b>						
<b>60TH AVE TO IL 116</b>				1000		
<b>IL 116 TO 80TH AVE</b>				250		
<b>80TH AVE TO 90TH AVE</b>						
<b>90TH AVE TO 100TH AVE</b>						
<b>100TH AVE TO 105TH AVE</b>			2300			
		2780			2780	1100
<b>105TH AVE TO PICAYUNE BR</b>				400		
		3220			3220	1400
<b>SUBTOTAL</b>	0	6000	2300	400	7250	2500
<b>TOTAL</b>					18450	
<b>WINTER BREAKUP 25%</b>					4612.5	
<b>GRAND TOTAL</b>					<b>23063</b>	

PAINT PAVEMENT MARKING						
LOCATION	78001110		78001130	78001140	70300100	70300150
	4" YELLOW SOLID	4" WHITE SOLID	6" WHITE SKIPDASH	8" SOLID WHITE	SHORT TERM PAVEMENT MARKING	SHORT TERM PAVEMENT MARKING REMOVAL
<b>US 67</b>	FOOT	FOOT	FOOT	FOOT	FOOT	SQ FT
STA. 806+79 TO STA. 1186+41	76685	73764	18980	11910	2306	769
<b>SUBTOTAL</b>	150449		18980	11910	2306	769
<b>TOTAL</b>	<b>150449</b>		<b>18980</b>	<b>11910</b>	<b>2306</b>	<b>769</b>

MOBILIZATION	
LOCATION	LSUM
JOBSITE	1
<b>TOTAL</b>	<b>1</b>

CHANGEABLE MESSAGE SIGN	
LOCATION	CAL DA
2 SIGNS AT 5 DAYS EACH	10
<b>TOTAL</b>	<b>10</b>

TRAFFIC CONTROL AND PROTECTION STANDARD 701406	
LOCATION	LSUM
JOBSITE	1
<b>TOTAL</b>	<b>1</b>

RRPM REMOVAL	
LOCATION	EACH
JOBSITE	207
<b>TOTAL</b>	<b>207</b>

MODEL: DEFAULT  
FILE NAME: p:\planning\dot\illinois\gov\p\1\DOT\Documents\DOT - Offices\District 4\Projects\04\_68G01\CADD\data\CADD\Drawings\04\xxxx-CADD.dgn

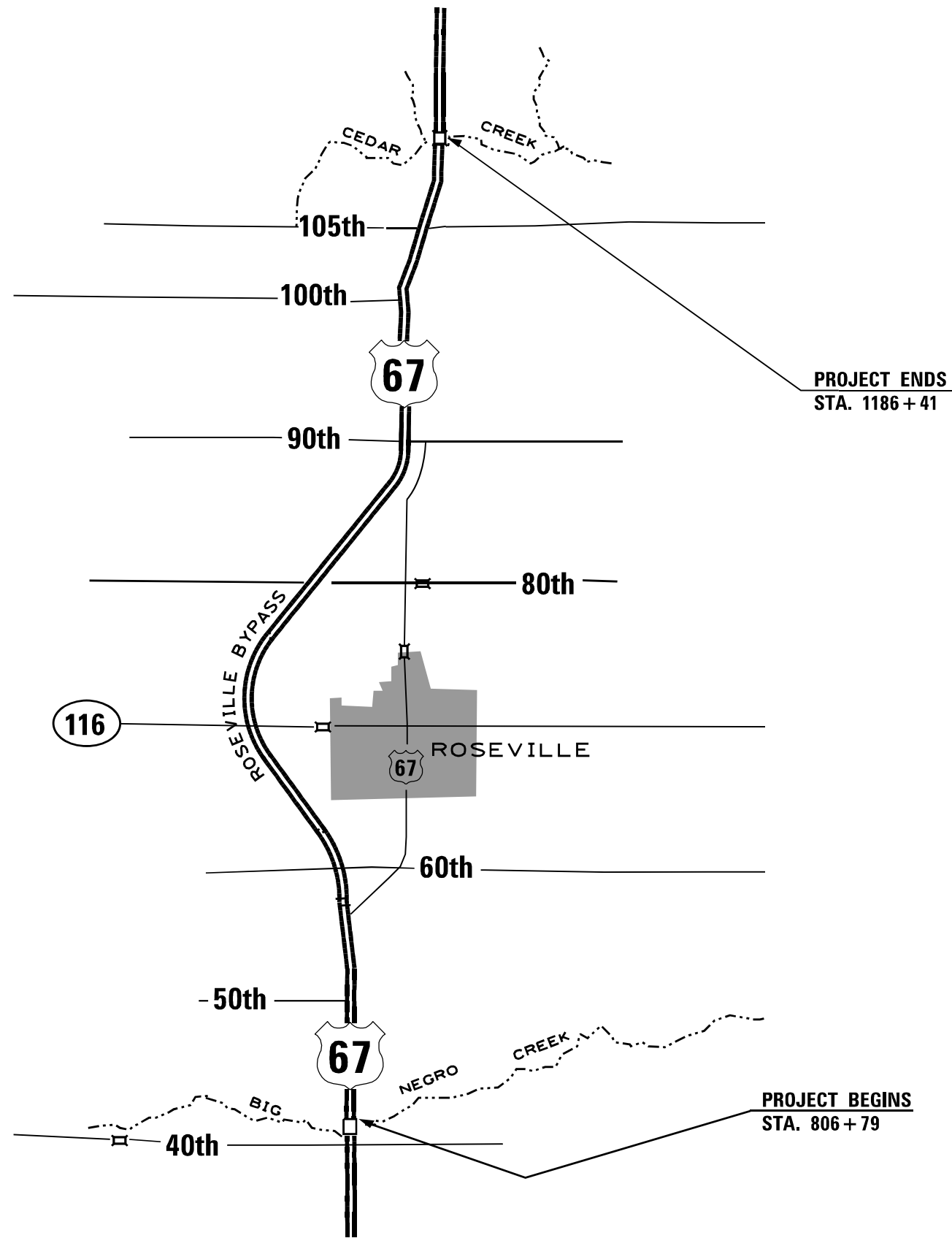
USER NAME = nichtingpj	DESIGNED -	REVISED -
PLOT SCALE = 1200.0000 ' / in.	DRAWN -	REVISED -
PLOT DATE = 3/23/2021	CHECKED -	REVISED -
	DATE -	REVISED -

**STATE OF ILLINOIS  
DEPARTMENT OF TRANSPORTATION**

SCHEDULE OF QUANTITIES			
SCALE:	SHEET	OF SHEETS	STA. TO STA.

F.A.P. RTE.	SECTION	COUNTY	TOTAL SHEETS	SHEET NO.
310	(35)I-1,PP	WARREN	9	5
CONTRACT NO. 68G01				
ILLINOIS FED. AID PROJECT				

MODEL: DEFAULT  
 FILE NAME: p:\planning\dot\illinois\gov\p\1\DOT\Documents\1\DOT Offices\District 4\Projects\14\_68G01\CADD\data\CADD\Drawings\14\_68G01-CADD.dgn



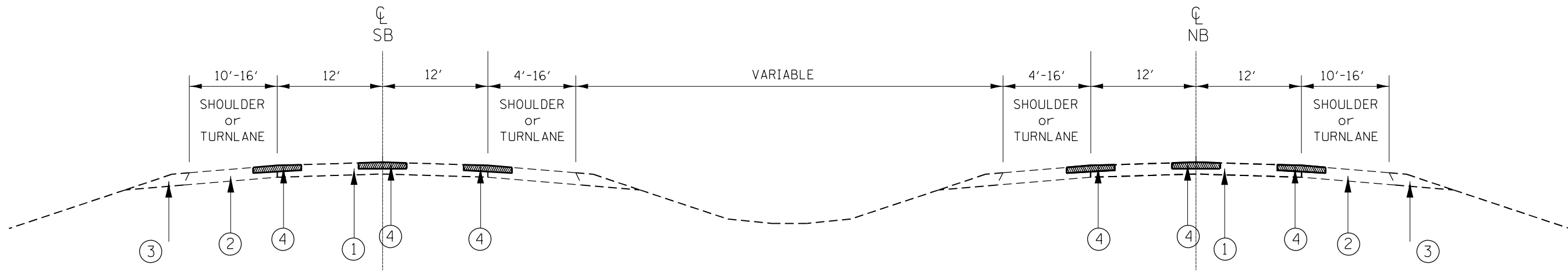
USER NAME = nichtingpj	DESIGNED -	REVISED -
	DRAWN -	REVISED -
PLOT SCALE = 1200.0000 ' / in.	CHECKED -	REVISED -
PLOT DATE = 3/23/2021	DATE -	REVISED -

**STATE OF ILLINOIS  
 DEPARTMENT OF TRANSPORTATION**

**LINE DIAGRAM**

SCALE: SHEET OF SHEETS STA. TO STA.

F.A.P. RTE.	SECTION	COUNTY	TOTAL SHEETS	SHEET NO.
310	(35)I-1,PP	WARREN	9	6
CONTRACT NO. 68G01				
ILLINOIS FED. AID PROJECT				

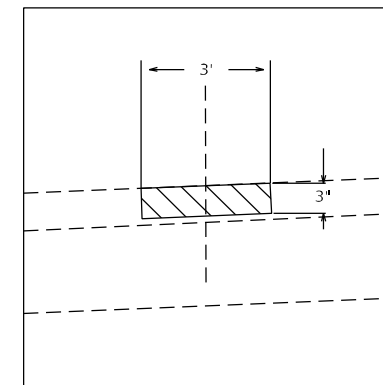


US 67  
 STA. 806+79 TO STA. 1186+41

**LEGEND**

- ① EXISTING HMA PAVEMENT
- ② EXISTING HMA SHOULDER/TURNLANE
- ③ EXISTING AGGREGATE SHOULDER
- ④ LONGITUDINAL JOINT REPAIR

**LONGITUDINAL JOINT REPAIR DETAIL**



**\* NOT TO SCALE**

MODEL: DEFAULT  
 FILE NAME: p:\planning\dot\illinois\gov\p\11801\Documents\11801\_01\Drawings\11801\_01\11801\_01\_01.dwg

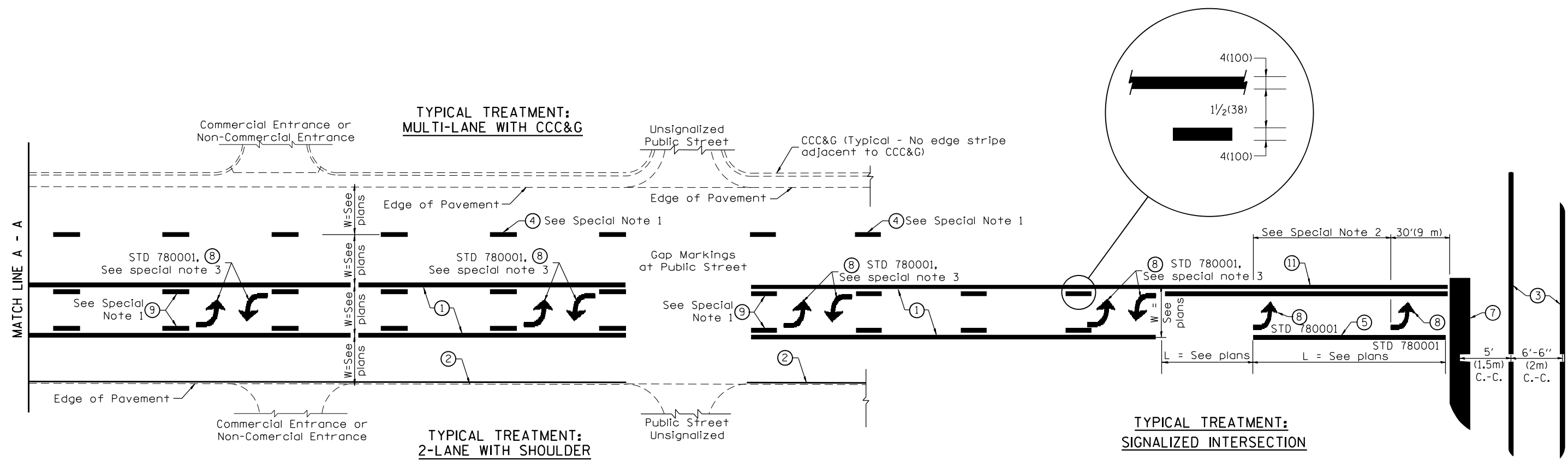
USER NAME = nichtingpj	DESIGNED -	REVISED -
	DRAWN -	REVISED -
PLOT SCALE = 1200.0000' / in.	CHECKED -	REVISED -
PLOT DATE = 3/23/2021	DATE -	REVISED -

**STATE OF ILLINOIS  
 DEPARTMENT OF TRANSPORTATION**

<b>TYPICAL SECTION</b>			
SCALE:	SHEET	OF	SHEETS
	STA.		TO STA.

F.A.I. RTE.	SECTION	COUNTY	TOTAL SHEETS	SHEET NO.
310	(35)I-1,PP	WARREN	9	7
CONTRACT NO. 68G01				
ILLINOIS FED. AID PROJECT				

DESIGNER NOTES:  
1. Include State Standard 780001 (Typical Pavement Markings)



**FLUSH PAVED MEDIAN: TWO-WAY LEFT TURN LANE WITH ONE-WAY LEFT TURN LANE AT SIGNALIZED INTERSECTION**

**TYPICAL PAVEMENT MARKING LEGEND**  
(Note: This is a District Standard Legend. Some elements may not apply to specific project.)

- ① 4(100) Solid (Yellow)
- ② 4(100) Solid (White)
- ③ 2-6(150) Crosswalk @ 6'-6" (2m)min C.-C. (White)  
2-8(200) Crosswalk @ 6'-6" (2m)min C.-C. (White) (When traffic signals are present.)
- ④ 6(150) Skip-Dash (White) (See Special Note 1)
- ⑤ 8(200) Solid (White)
- ⑥ 12(300) Diagonal (White) (Item ⑥ is shown on Std. 780001)
- ⑦ 24(600) Stop Bar (White)
- ⑧ Letters & Arrows (See Std. 780001 and Special Notes 2 & 3)
- ⑨ 4(100) Skip-Dash (Yellow) (See Special Note 1)
- ⑩ 12(300) Diagonal (Yellow) (See Table A) (See Table A)
- ⑪ 4(100) Double Solid (Yellow) (See Table A)

**SPECIAL NOTES**

1. Skip-Dash markings will be centered between both ends of city blocks and shall be placed in alignment transversely across the pavement.
2. The following shall apply to arrows located in one-way left turn lanes:
  - A. A minimum of two (2) arrows is required.
  - B. The maximum spacing between arrows is 80' (24 m).
  - C. Arrows shall be evenly spaced if three (3) or more are required.
3. The following shall apply to arrow pairs located in two-way left turn lanes:
  - A. A minimum of two (2) arrow pairs is required.
  - B. The maximum spacing between arrow pairs is 200' (61 m).
  - C. Arrow pairs shall be evenly spaced if three (3) or more are required.
  - D. The spacing between Bi Directional Left Turn Arrows is 33' (10 m).

**GENERAL NOTES**

1. Refer to State Standard 780001 for additional Pavement Markings including letters & arrows.
2. See Plans for Pavement Markings adjacent to curbed islands and medians, and through lane reductions.
3. Refer to Article 780.13 for letter, number and symbol areas (sq. ft.)
4. Areas are grooved 1" beyond each edge for the following symbols:  
Through Arrow= 14.8 sq. ft.  
Large Left or Right Arrow= 21.9 sq. ft.  
2 Arrow Combination Left (or Right) and Through= 34.9 sq. ft.  
Wrong Way Arrow= 29.5 sq. ft.  
Railroad Crossing Symbol= 69.8 sq. ft.  
(For further information, refer to BDE Special Provision: Grooving for Recessed Pavement Markings)

01-01-97	RENUM. F-8.03, NEW REVISION BOX	T.P.	10-16-06	REVISED TO 2007 SPEC.	
02-07-97	ADD BI DIRECTIONAL DIMENSION	J.A.	2/29/16	ADDED GROOVING AREAS	R.D.
10-97	CORRECT BI DIRECTIONAL DIMENSION	J.A.	07-16-19	SPELLING CORRECTIONS	R.D.
08-02	ADD CROSSWALK DMNS. WITH T.S.	M.A.			

**STATE OF ILLINOIS**  
**DEPARTMENT OF TRANSPORTATION**

**TYPICAL PAVEMENT MARKINGS**

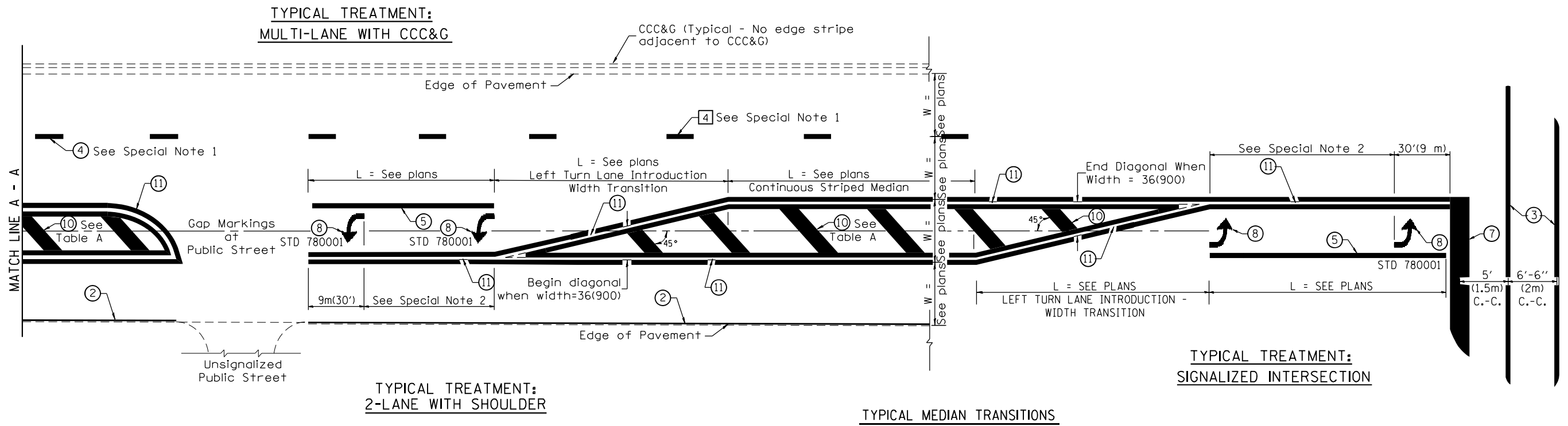
NOT TO SCALE

F.A. RTE.	SECTION	COUNTY	TOTAL SHEETS	SHEET NO.
310	(35)I-1,PP	WARREN	9	8
CONTRACT NO. 68G01				

SHT. 1 OF 2  
CADD STD. 780001-D4

FED. ROAD DIST. NO. ILLINOIS FED. AID PROJECT





TYPICAL TREATMENT:  
SIGNALIZED INTERSECTION

TYPICAL MEDIAN TRANSITIONS

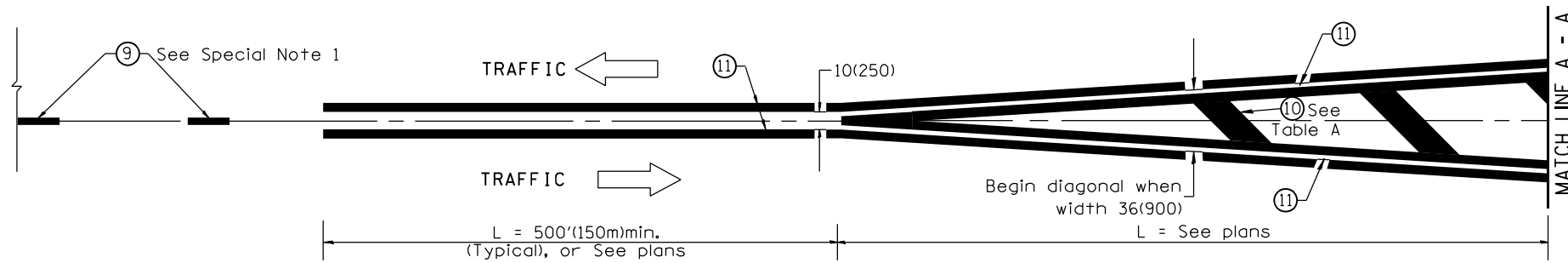
TYPICAL TREATMENT:  
2-LANE WITH SHOULDER

FLUSH PAVED MEDIAN: RESTRICTED LEFT TURN LANE

TABLE A

RECOMMENDED SPACING BETWEEN DIAGONAL LINES

SPEED LIMIT RANGE	INTERSECTION CHANNELIZATION (Includes Width Transitions for Median and Left Turn Lane Introductions)	
	CONTINUOUS	
Less Than 30 mph (50 km/h)	50' (15m)	15' (5m)
30 - 45 mph (50 - 70 km/h)	75' (23m)	20' (6m)
Over 45 mph (70 km/h)	150' (46m)	30' (9m)



MEDIAN INTRODUCTION - WIDTH TRANSITIONS

All dimensions are in inches (millimeters) unless otherwise noted.