

STATE OF ILLINOIS
DEPARTMENT OF TRANSPORTATION

F.A.I. RTE.	SECTION	COUNTY	TOTAL SHEETS	SHEET NO.
70	12-54 WS-2	CLARK	23	1
		ILLINOIS	CONTRACT NO. 74A-13	

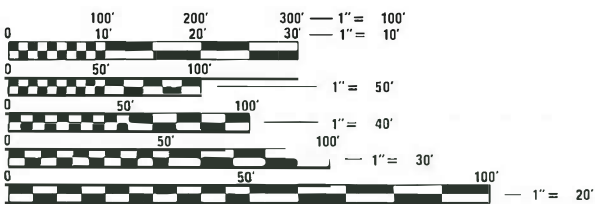
FOR INDEX OF SHEETS, SEE SHEET NO. 2

PROPOSED HIGHWAY PLANS

ADT = 12,300 (F.A.I. 70 WB)

F.A.I. ROUTE 70 (I-70)
SECTION 12-54WS-2
PROJECT STP-IODA(894)
SCALE REPLACEMENT
CLARK COUNTY

C-97-127-21

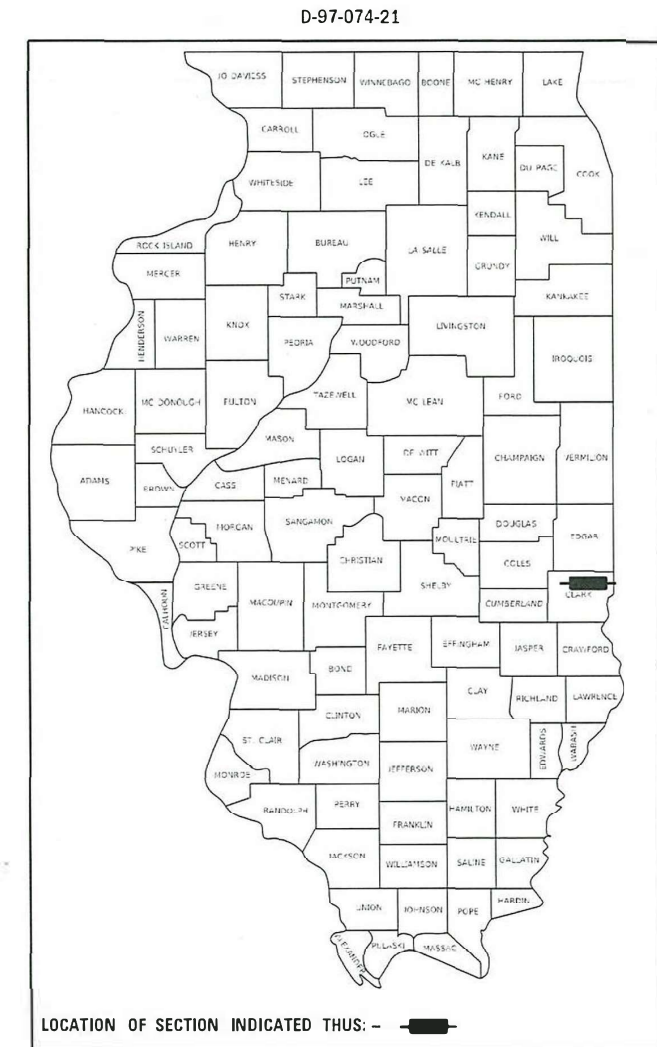
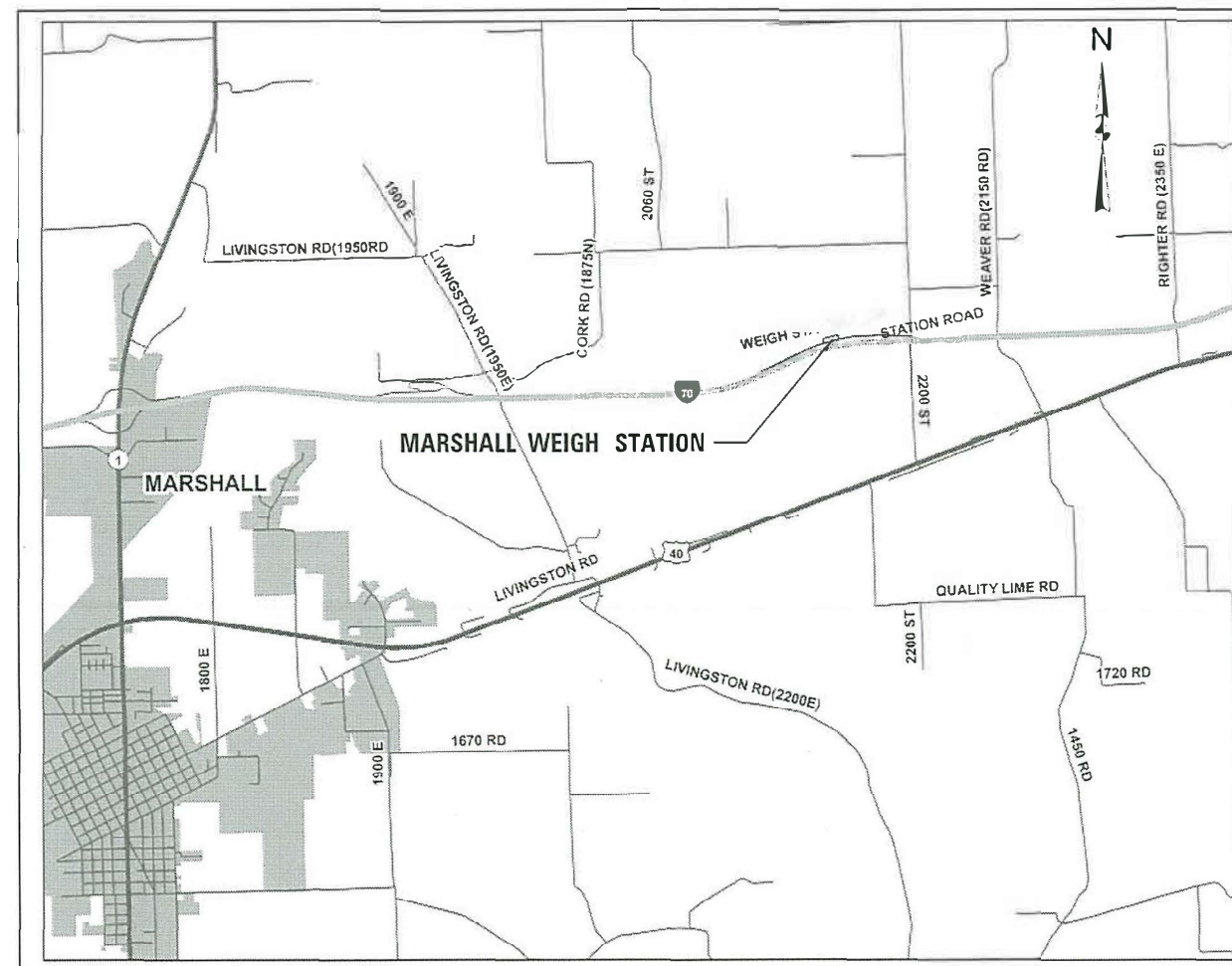


FULL SIZE PLANS HAVE BEEN PREPARED USING STANDARD ENGINEERING SCALES. REDUCED SIZED PLANS WILL NOT CONFORM TO STANDARD SCALES. IN MAKING MEASUREMENTS ON REDUCED PLANS, THE ABOVE SCALES MAY BE USED.

J.U.L.I.E.
JOINT UTILITY LOCATION INFORMATION FOR EXCAVATORS
1-800-892-0123
OR 811

PROJECT ENGINEER BRIAN LEWIS
PROJECT MANAGER CHRIS WESTENDORF

CONTRACT NO. 74A43



STATE OF ILLINOIS
DEPARTMENT OF TRANSPORTATION

SUBMITTED JANUARY 29, 2021

Jeffrey P. Hunkler
REGIONAL ENGINEER

May 7, 2021

Joe E. A. etc
ENGINEER OF DESIGN AND ENVIRONMENT

May 7, 2021

James J. Gu...
DIRECTOR OF HIGHWAYS PROJECT IMPLEMENTATION 13

PRINTED BY THE AUTHORITY
OF THE STATE OF ILLINOIS

SHEET NO.	ITEM
1	COVER SHEET
2	INDEX OF SHEETS, HIGHWAY STANDARDS AND GENERAL NOTES
3	SUMMARY OF QUANTITIES
4-6	TYPICAL CROSS-SECTIONS
7-8	PLAN SHEETS
9-12	STRUCTURAL PLANS
13-14	DETAILS
15-23	EXISTING STRUCTURAL PLANS

THE FOLLOWING STANDARDS ARE A PART OF THESE PLANS AND ARE INCLUDED FOLLOWING THE LAST NUMBERED SHEET OF THE PLANS.

STD. NO.	DESCRIPTION
000001-08	STANDARD SYMBOLS, ABBREVIATIONS, AND PATTERNS
001006	DECIMAL OF AN INCH AND OF A FOOT
442101-09	CLASS B PATCHES
701451-05	RAMP CLOSURE FREEWAY/EXPRESSWAY
701901-08	TRAFFIC CONTROL DEVICES
701006-05	OFF-ROAD OPERATIONS, 2L, 2W, 15' (4.5 M) TO 24" (600 MM) FROM PAVEMENT EDGE

PLAN NOTES:

THE LIGHTED SIGN "CLOSED" SHALL BE TURNED ON DURING THE WEIGH STATION SHUT DOWN AS DIRECTED BY THE ENGINEER.

THE LOCATIONS AND FINAL QUANTITIES OF STRUCTURAL CONCRETE REPAIR SHALL BE DETERMINED BY THE ENGINEER.

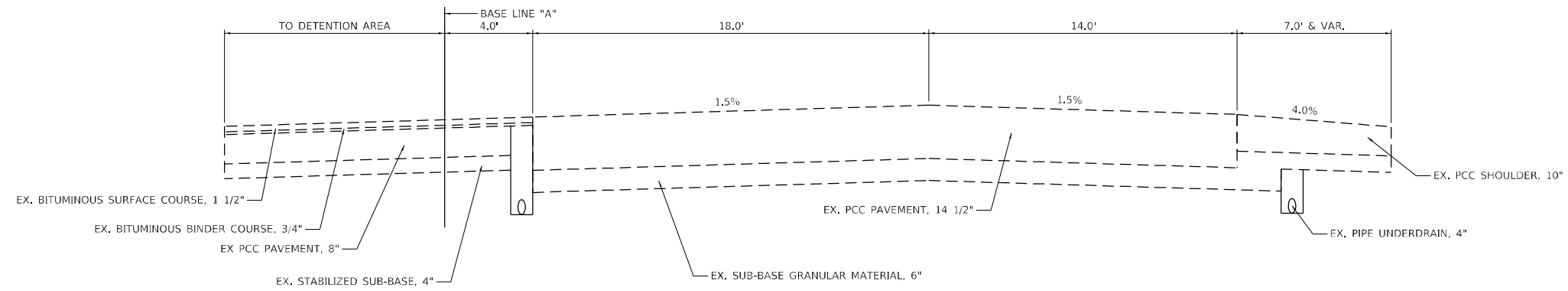
THE LOCATIONS AND FINAL QUANTITIES OF CLASS B PAVEMENT PATCHING SHALL BE DETERMINED BY THE ENGINEER.

THE ENGINEER SHALL CONTACT KEITH DONOVAN, WEIGHT ENFORCEMENT ENGINEER, AT KEITH.DONOVAN@ILLINOIS.GOV OR (217)-299-0934 A MINIMUM OF TWO (2) WEEKS PRIOR TO BEGINNING CONSTRUCTION.

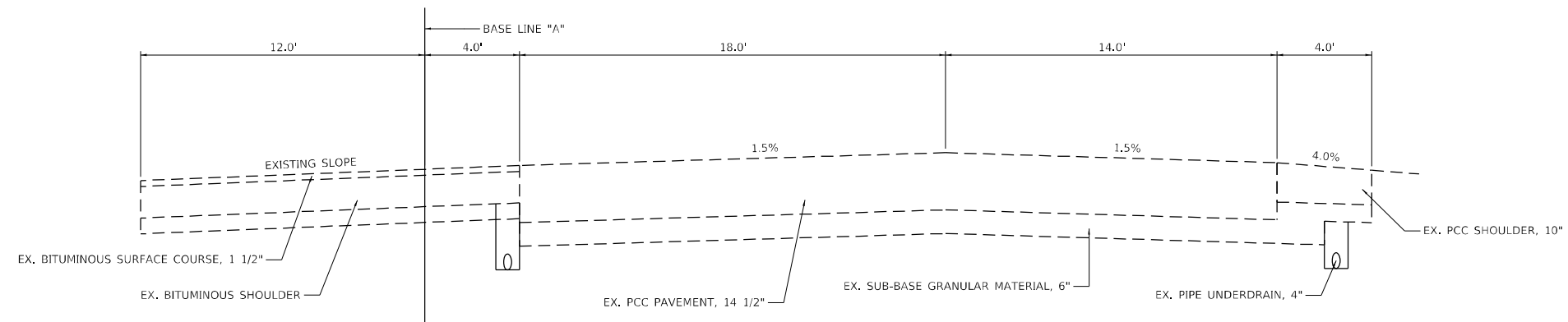
MODEL: Default
FILE: Main1.dwg
C:\ProgramData\Autodesk\LT2021\Projects\7443\CAD\Drawings\DOT\Office\District 7\Project\7443\CAD\Drawings\DOT\7443-sit-sen-noe.dwg

REV. - MS

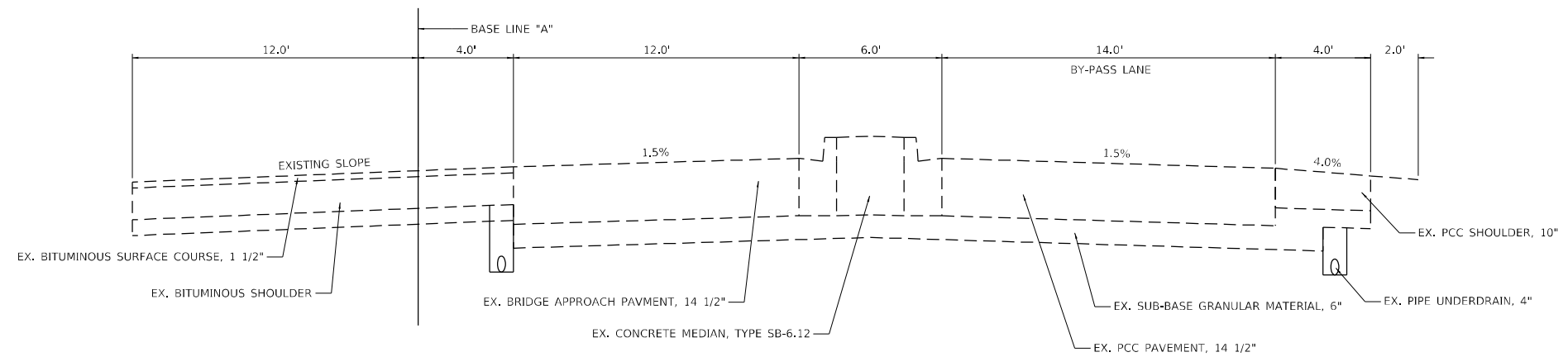
USER NAME = steffenmk	DESIGNED -	REVISED -	STATE OF ILLINOIS DEPARTMENT OF TRANSPORTATION	GENERAL NOTES				F.A.I. RTE.	SECTION	COUNTY	TOTAL SHEETS	SHEET NO.
PLOT SCALE = 100.0000' / in.	DRAWN -	REVISED -						70	12-54 WS-2	CLARK	23	2
PLOT DATE = 3/26/2021	CHECKED -	REVISED +		SCALE: SHEET OF SHEETS STA. TO STA.				CONTRACT NO. 74A43				
	DATE -	REVISED +		ILLINOIS FED. AID PROJECT								



TYPICAL SECTION
STA 98+00 TO STA 99+00



TYPICAL SECTION
STA 99+00 TO STA 99+50



TYPICAL SECTION
STA 99+50 TO STA 100+00

MODEL: Default
 FILE NAME: p:\pub\amr\room.dwg
 PROJECT: 7443\CADD\Drawings\DOT Office\Drawings\7443\CADD\Drawings\DOT\7443-dwg-typrsec1.dwg

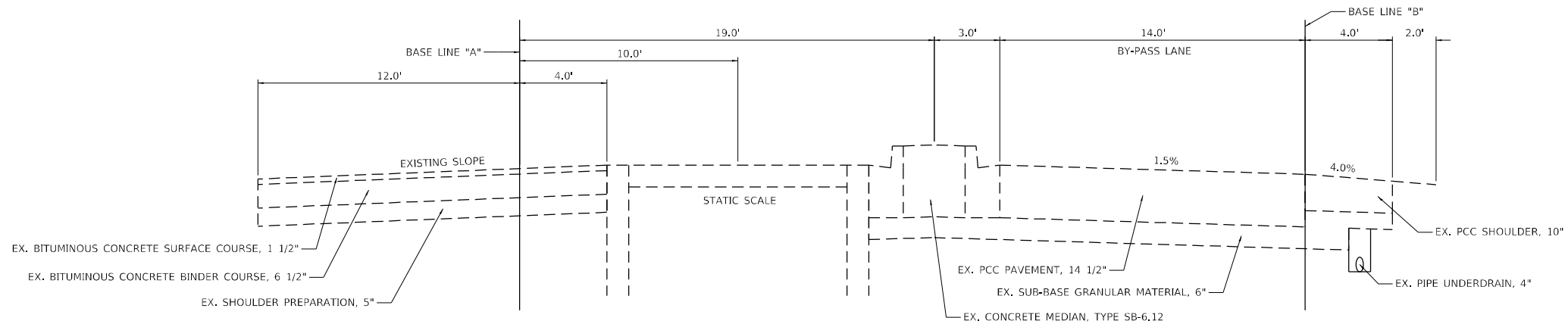
USER NAME = steffenmk	DESIGNED -	REVISED -
	DRAWN -	REVISED -
PLOT SCALE = 20,0000 * / in.	CHECKED -	REVISED -
PLOT DATE = 1/28/2021	DATE -	REVISED -

**STATE OF ILLINOIS
DEPARTMENT OF TRANSPORTATION**

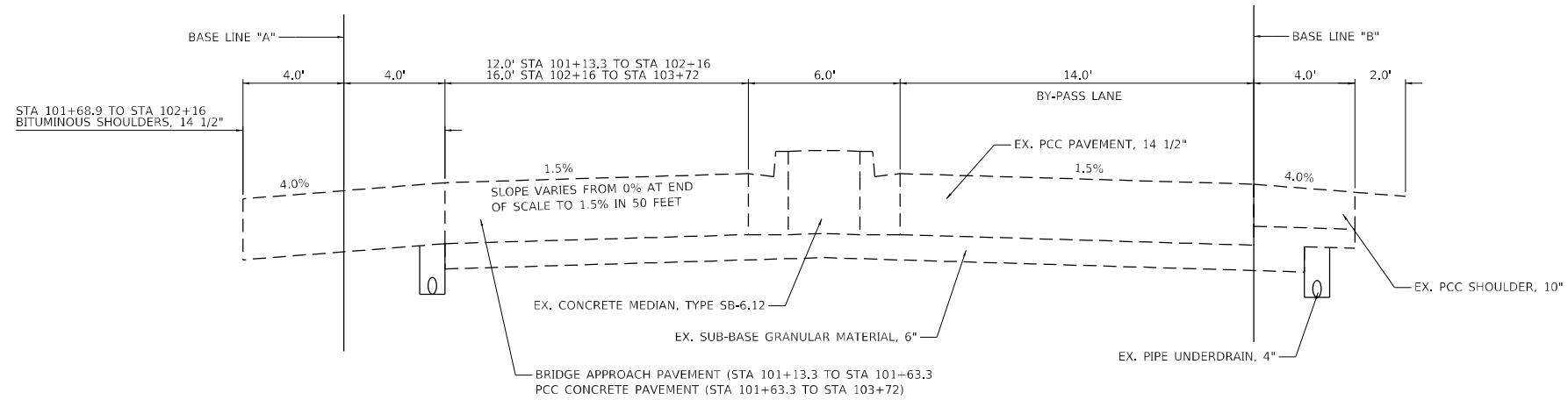
EXISTING TYPICAL SECTIONS

SCALE: SHEET 1 OF 3 SHEETS STA. TO STA.

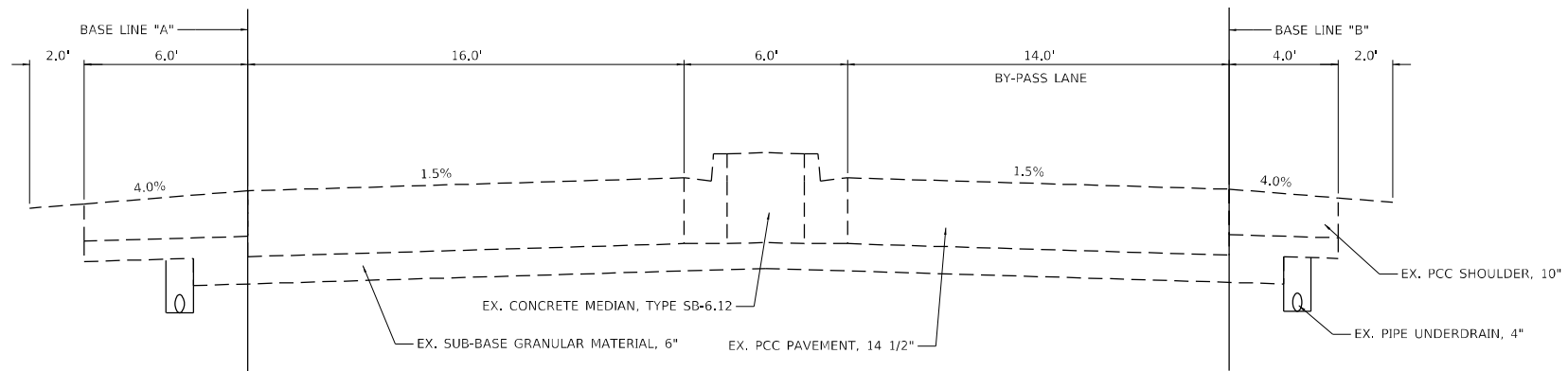
F.A.I. RTE.	SECTION	COUNTY	TOTAL SHEETS	SHEET NO.
70	12-54 WS-2	CLARK	23	4
CONTRACT NO. 74A43				
ILLINOIS FED. AID PROJECT				



TYPICAL SECTION
STA 100+00 TO STA 101+13.3



TYPICAL SECTION
STA 101+13.3 TO STA 103+72



TYPICAL SECTION
STA 103+72 TO STA 104+65.04

MODEL: Default
 FILE NAME: p:\pub\harron\dot\illinois\dot\pwwid\dot\documents\dot\office\dot\draft\7\project\7443\CADD\dot\cadd\sheet\07\7443-shc-typic1.e.dwg

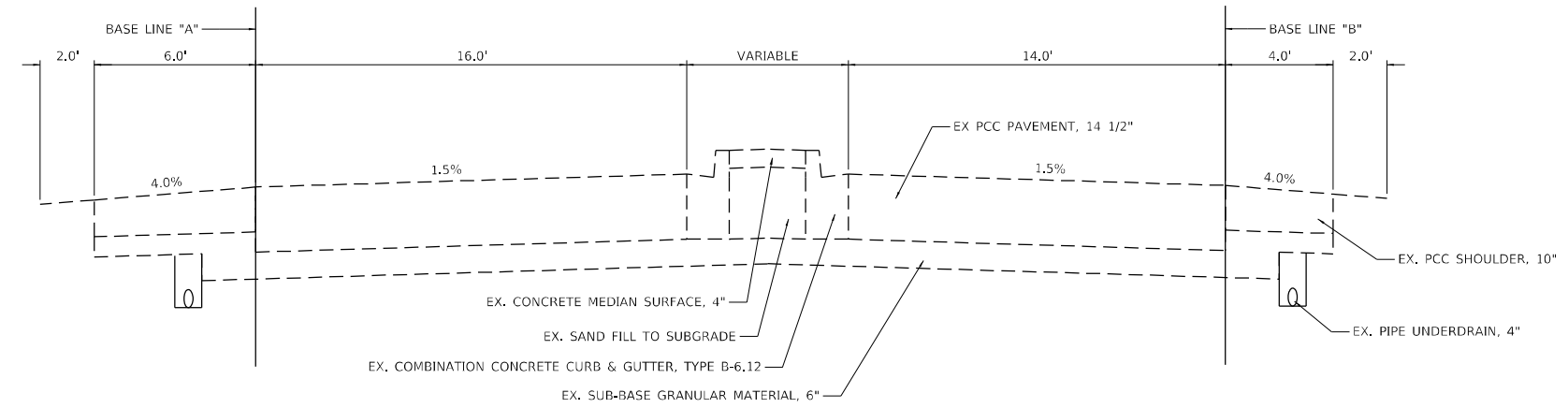
USER NAME = steffenmk	DESIGNED -	REVISED -
	DRAWN -	REVISED -
PLOT SCALE = 20,0000 * / in.	CHECKED -	REVISED -
PLOT DATE = 1/28/2021	DATE -	REVISED -

STATE OF ILLINOIS
DEPARTMENT OF TRANSPORTATION

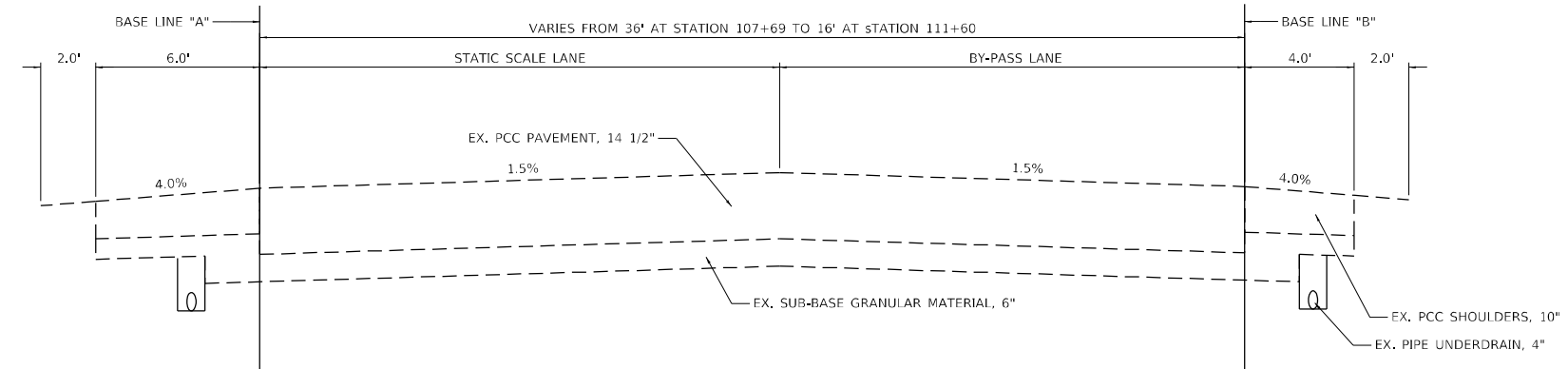
EXISTING TYPICAL SECTIONS

SCALE: SHEET 2 OF 3 SHEETS STA. TO STA.

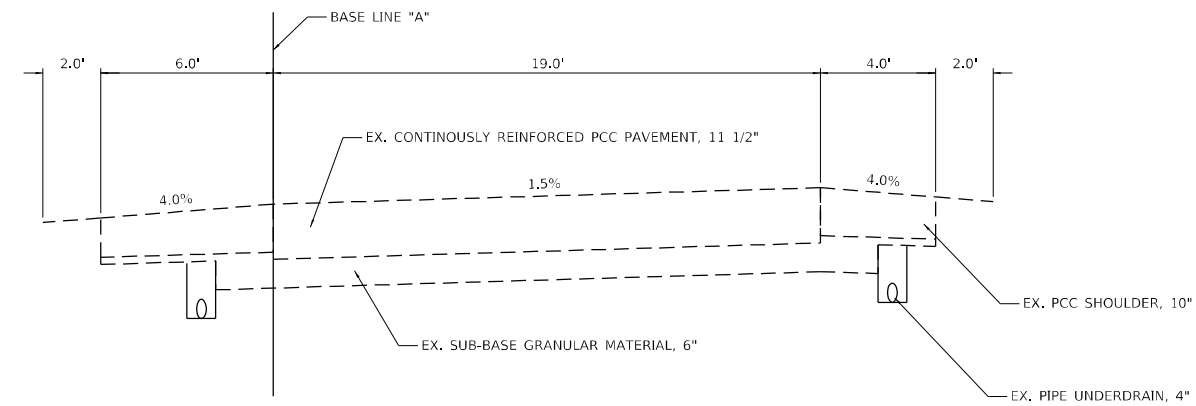
F.A.I. RTE.	SECTION	COUNTY	TOTAL SHEETS	SHEET NO.
70	12-54 WS-2	CLARK	23	5
CONTRACT NO. 74A43				
ILLINOIS FED. AID PROJECT				



TYPICAL SECTION
STA 104+65.04 TO STA 107+69



TYPICAL SECTION
STA 107+69 TO STA 111+60



TYPICAL SECTION
STA 111+60 TO STA 115+98

MODEL: Default
 FILE NAME: p:\pub\harronm.dwt\illinois.gov\PWIDOT\Documents\DOT_Offices\District_7\Projects\7443\CADD\Drawings\CAD\Sheets\074443-shc-typical.dgn

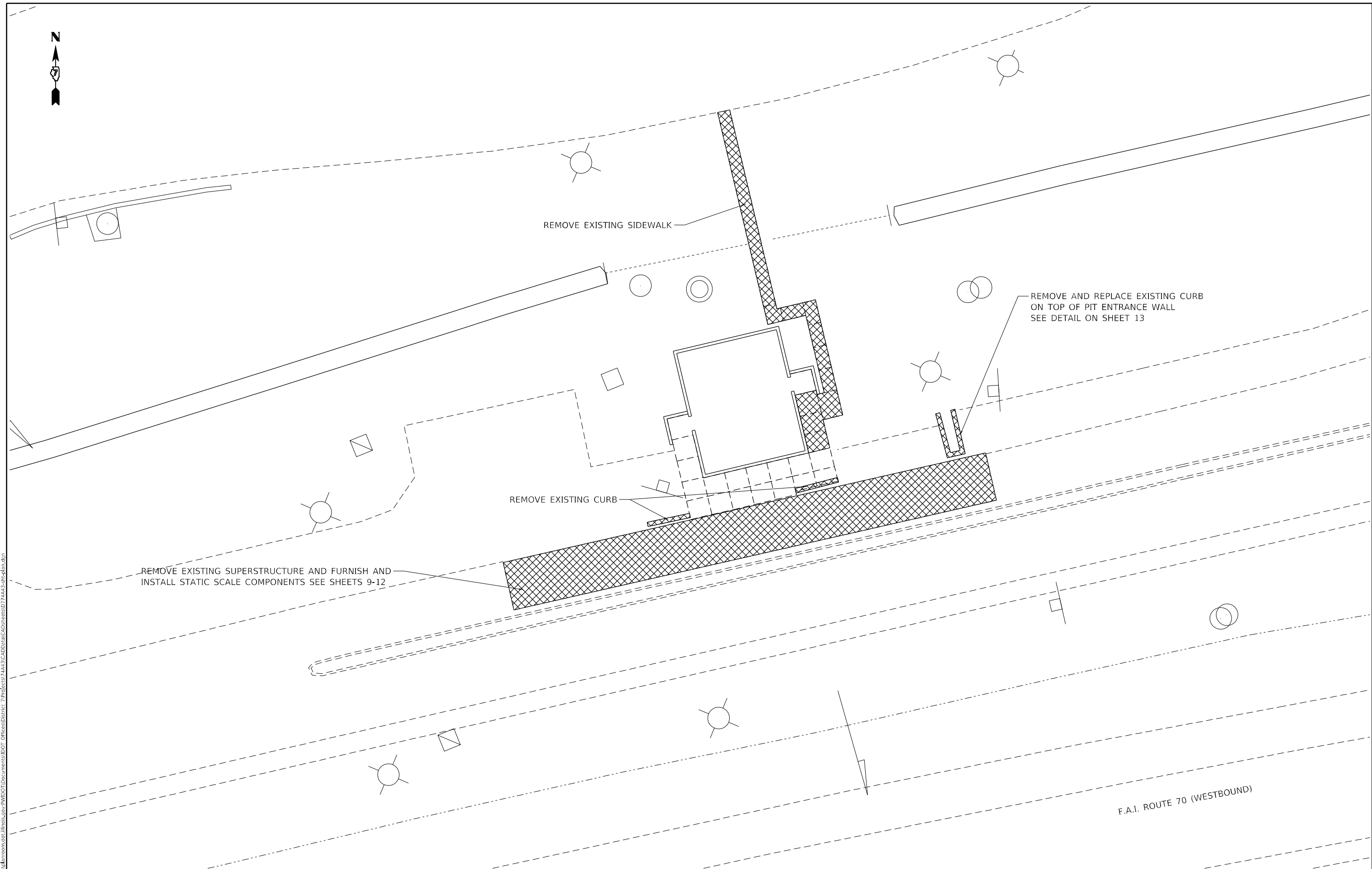
USER NAME = steffenmk	DESIGNED -	REVISED -
	DRAWN -	REVISED -
PLOT SCALE = 20,0000 * / in.	CHECKED -	REVISED -
PLOT DATE = 1/28/2021	DATE -	REVISED -

**STATE OF ILLINOIS
DEPARTMENT OF TRANSPORTATION**

EXISTING TYPICAL SECTIONS

SCALE: SHEET 3 OF 3 SHEETS STA. TO STA.

F.A.I. RTE.	SECTION	COUNTY	TOTAL SHEETS	SHEET NO.
70	12-54 WS-2	CLARK	23	6
				CONTRACT NO. 74A43
ILLINOIS FED. AID PROJECT				



MODEL: Default
 FILE NAME: p:\pub\baronm.dwg
 PROJECT: 74A43 CAD Data
 OFFICE: District 7
 DATE: 1/29/2021

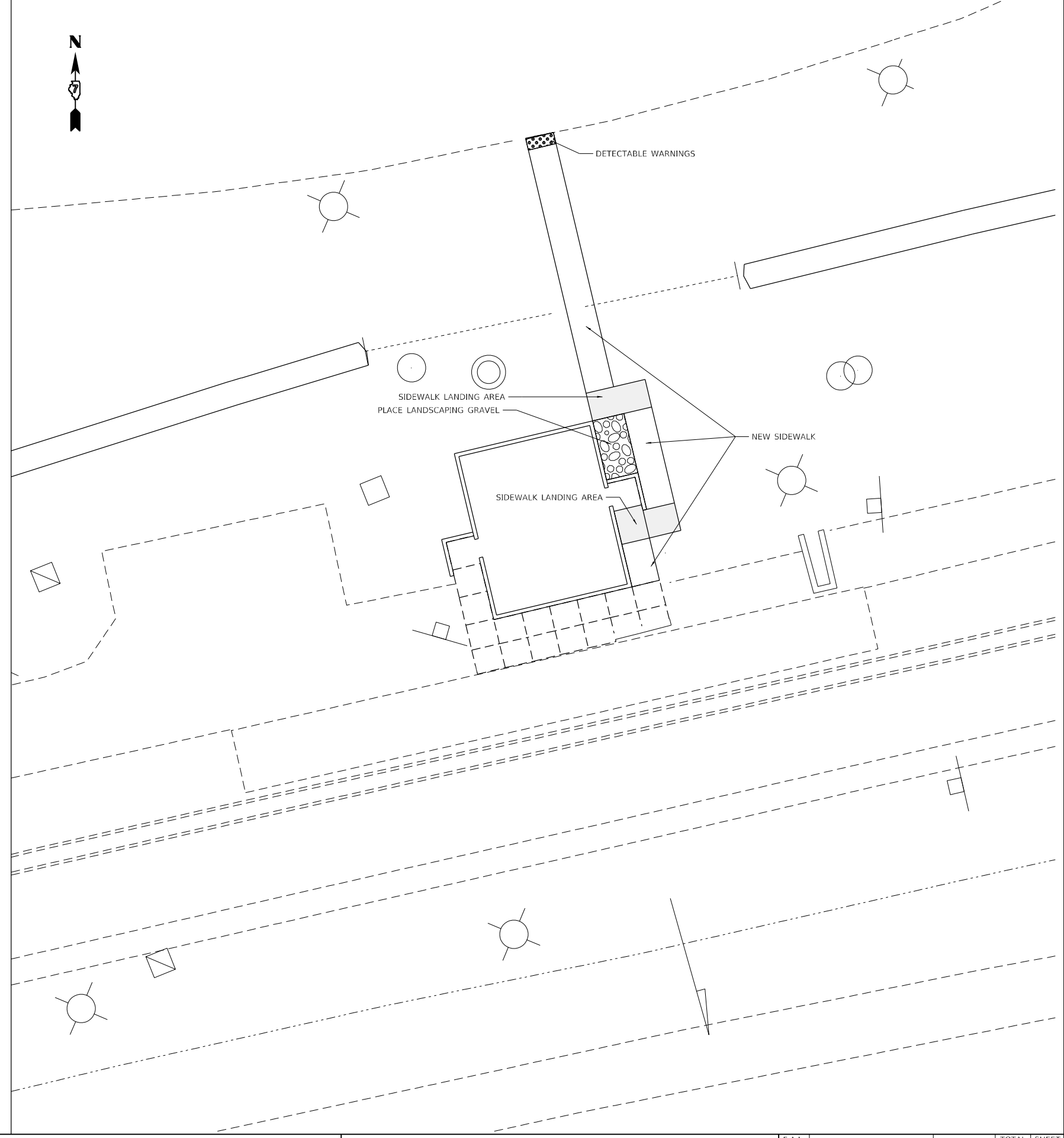
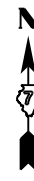
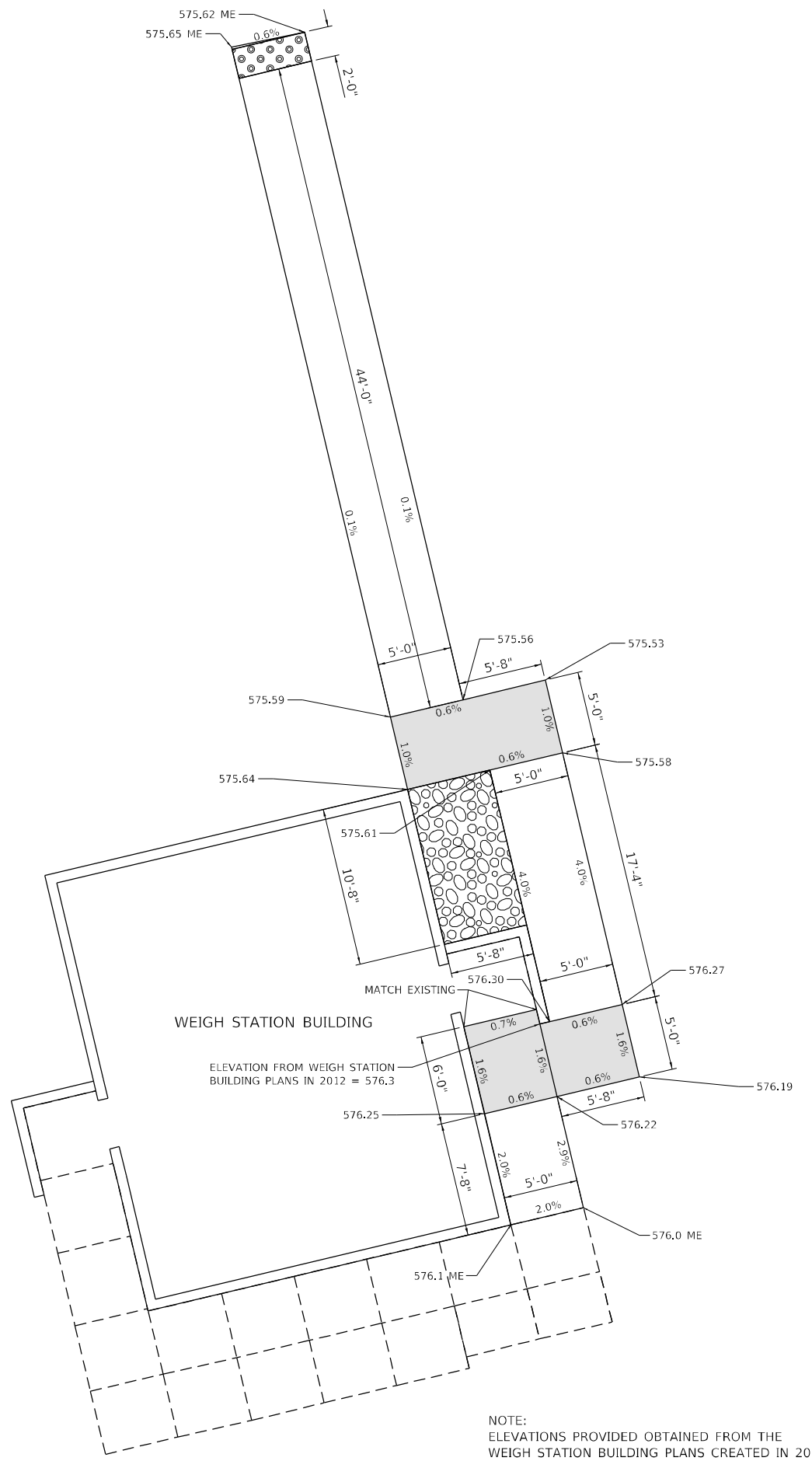
USER NAME = steffenmk	DESIGNED -	REVISED -
PLOT SCALE = 20,0000 * / in.	DRAWN -	REVISED -
PLOT DATE = 1/29/2021	CHECKED -	REVISED -
	DATE -	REVISED -

STATE OF ILLINOIS
DEPARTMENT OF TRANSPORTATION

WEIGH STATION REMOVAL PLAN

SCALE: SHEET OF SHEETS STA. TO STA.

F.A.I. RTE.	SECTION	COUNTY	TOTAL SHEETS	SHEET NO.
70	12-54 WS-2	CLARK	23	7
CONTRACT NO. 74A43				
ILLINOIS FED. AID PROJECT				



MODEL: Default
 FILE NAME: p:\pub\baronon.dwg
 PROJECT: 74443\CADD\Drawings\DOT Office\Drawings\74443\CADD\Drawings\74443-Subplan.dwg

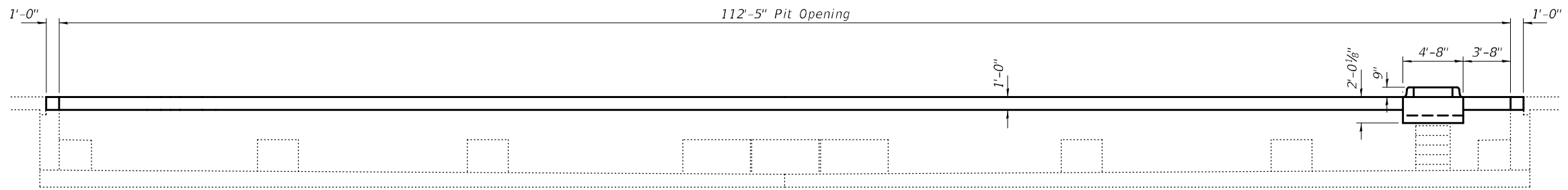
USER NAME = steffemk	DESIGNED -	REVISED -
PLOT SCALE = 20,0000 * / in.	DRAWN -	REVISED -
PLOT DATE = 1/29/2021	CHECKED -	REVISED -
	DATE -	REVISED -

STATE OF ILLINOIS
DEPARTMENT OF TRANSPORTATION

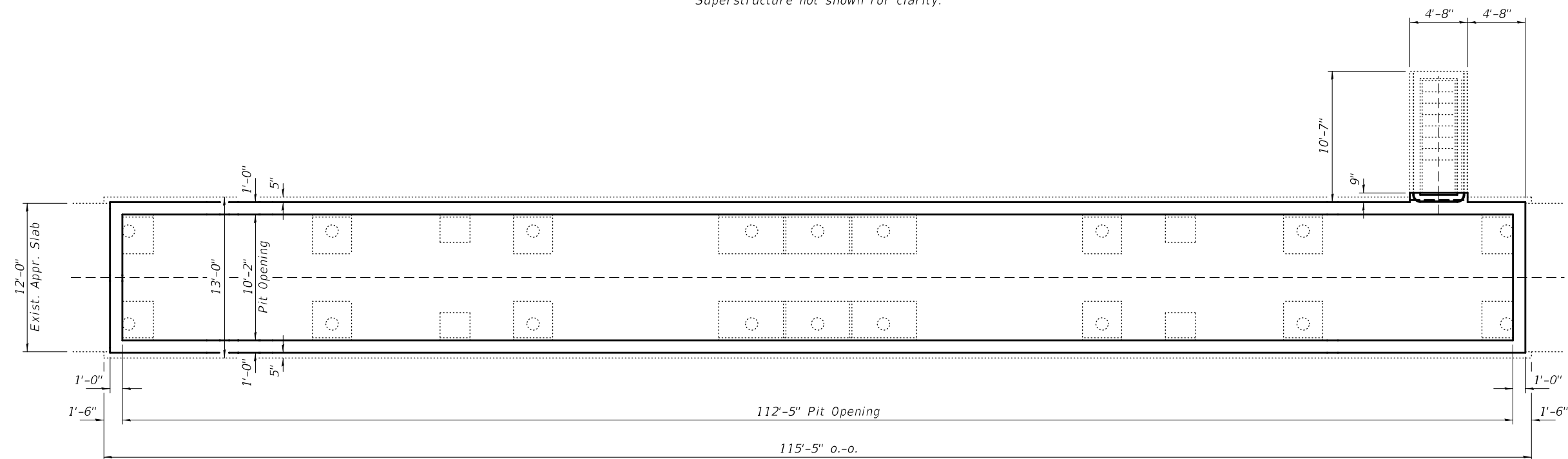
WEIGH STATION PLAN

SCALE: SHEET OF SHEETS STA. TO STA.

F.A.I. RTE.	SECTION	COUNTY	TOTAL SHEETS	SHEET NO.
70	12-54 W5-2	CLARK	23	8
CONTRACT NO. 74A43				
ILLINOIS FED. AID PROJECT				



LONGITUDINAL SECTION
Superstructure not shown for clarity.



PLAN
Superstructure not shown for clarity.

GENERAL NOTES

All structural steel shall conform to AASHTO Classification M-270 Gr. 36, unless otherwise noted.
 Reinforcement bars designated (E) shall be epoxy coated.
 Plan dimensions and details relative to existing plans are subject to nominal construction variations. The Contractor shall field verify existing dimensions and details affecting new construction and make necessary approved adjustments prior to construction or ordering of materials. Such variations shall not be cause for additional compensation for a change in scope of the work, however, the Contractor will be paid for the quantity actually furnished at the unit price bid for the work.
 Existing reinforcement bars extending into the removal area shall be cleaned, straightened and incorporated into the new construction. Any reinforcement bars that are damaged during concrete removal shall be replaced with an approved bar splicer or anchorage system. Cost included with Concrete Removal.
 Coping angles and stud shear connectors shall be galvanized according to AASHTO M111 or M232 as applicable. For painting of scale components see Special Provision.

TOTAL BILL OF MATERIAL

ITEM	UNIT	QUANTITY
Removal of Existing Superstructures	Each	1
Concrete Removal	Cu. Yd.	13.1
Concrete Structures	Cu. Yd.	13.1
Protective Coat	Sq. Yd.	27.5
Furnishing and Erecting Structural Steel	Pound	4650
Reinforcement Bars, Epoxy Coated	Pound	1310
Furnishing and Installing Static Scale Components	L. Sum	1



EXPIRES 11-30-2022

DESIGNED - Victor H. Veliz	EXAMINED - <i>Tony A. Beck</i> ENGINEER OF STRUCTURAL SERVICES	DATE - MAY 3, 2021
CHECKED - Adrian T. Halloway	PASSED - <i>Dr. Carl Puzey</i> ENGINEER OF BRIDGES AND STRUCTURES	REVISED -
DRAWN - daburdell		REVISED -
CHECKED - VHV ATH		

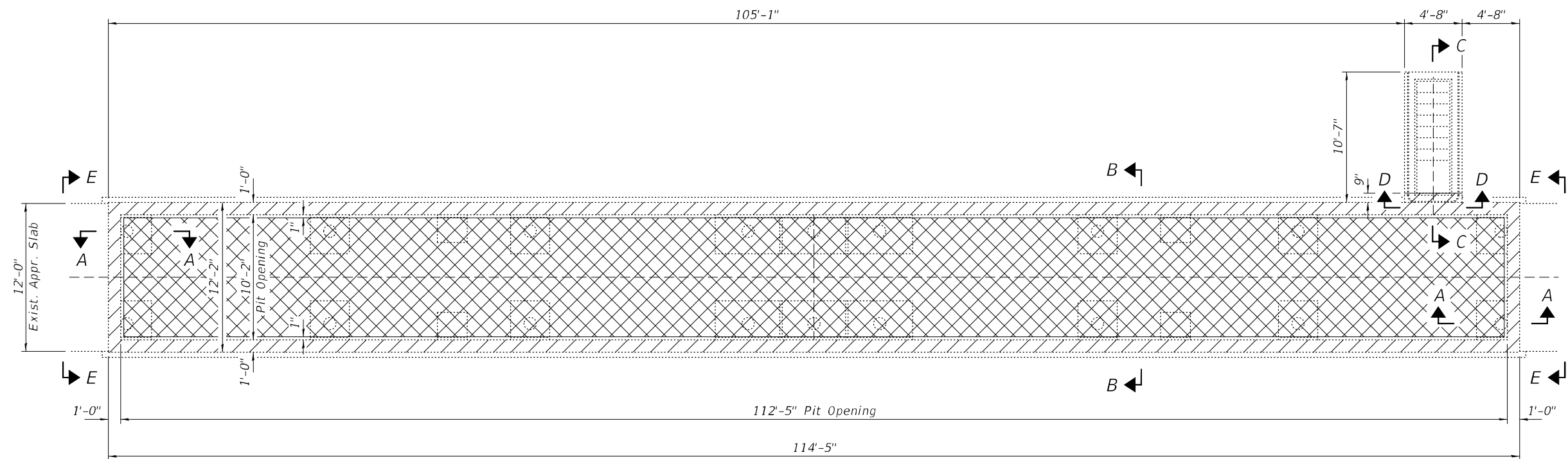
STATE OF ILLINOIS
DEPARTMENT OF TRANSPORTATION

GENERAL PLAN AND ELEVATION
F.A.I. 70 WEST BOUND
MARSHALL WEIGH STATION

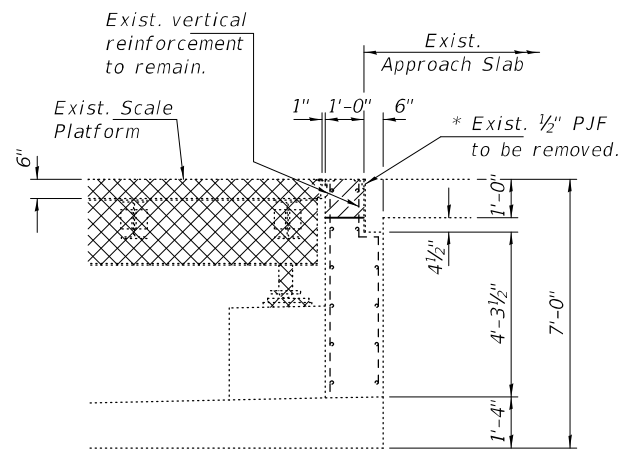
SHEET NO. 1 OF 4 SHEETS

F.A.I. RTE.	SECTION	COUNTY	TOTAL SHEETS	SHEET NO.
70	12-54WS-2	CLARK	23	9
CONTRACT NO. 74A43				

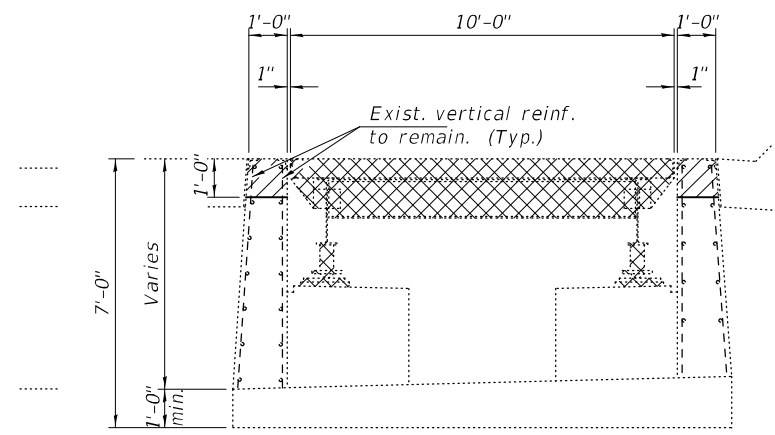
ILLINOIS FED. AID PROJECT



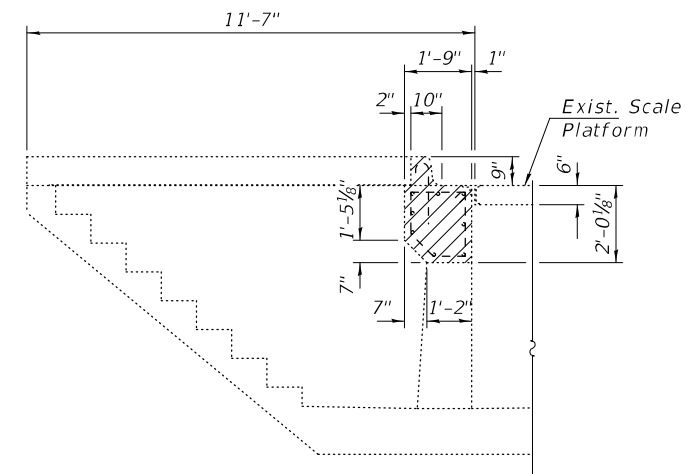
REMOVAL PLAN



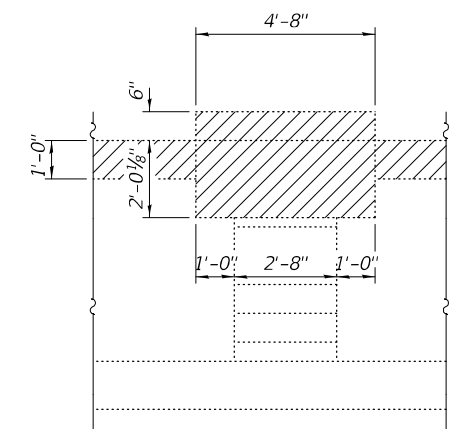
SECTION A-A



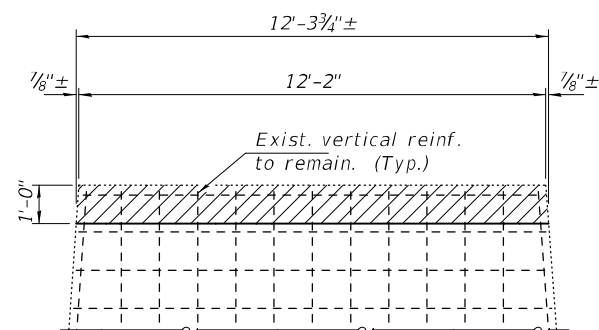
SECTION B-B



SECTION C-C



SECTION D-D



SECTION E-E

Notes:
 Hatched areas indicate Concrete Removal.
 Cross hatched areas indicate Removal of Existing Superstructures.

EXPIRES 11-30-2022

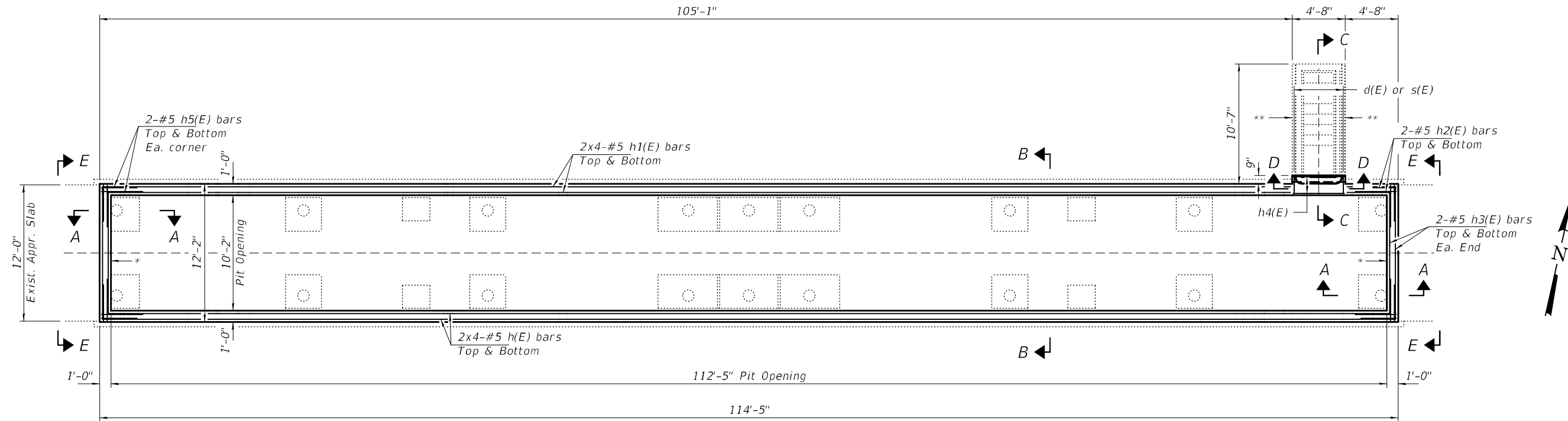
DESIGNED - VHV	EXAMINED - <i>Timothy A. Daburdell</i> ENGINEER OF STRUCTURAL SERVICES	DATE - MAY 3, 2021
CHECKED - ATH	PASSED - <i>Carl R. Meyer</i> ENGINEER OF BRIDGES AND STRUCTURES	REVISED -
DRAWN - <i>daburdell</i>		REVISED -
CHECKED - VHV ATH		

**STATE OF ILLINOIS
 DEPARTMENT OF TRANSPORTATION**

**REMOVAL DETAILS
 MARSHALL WEIGH STATION**

SHEET NO. 2 OF 4 SHEETS

F.A.I. RTE.	SECTION	COUNTY	TOTAL SHEETS	SHEET NO.
70	12-54WS-2	CLARK	23	10
CONTRACT NO. 74A43				
ILLINOIS FED. AID PROJECT				



REPLACEMENT PLAN

* Structural Repair of Concrete $\leq 5"$ below concrete removal areas. Locations and size to be determined by the Engineer in the field. Estimated quantities are included in the roadway plans.

** For stairwell wall repair details, pay items and quantities, see roadway plans.

Notes:
 See sheet 4 of 4 for Section A-A, B-B, C-C, D-D and E-E.
 Bars indicated thus 22x5-#5 etc. indicates 22 lines of bars with 5 lengths per line.

MIN. BAR LAP
 #5 - 3'-7"

BILL OF MATERIAL

Bar	No.	Size	Length	Shape
h(E)	16	#5	31'-3"	—
h1(E)	16	#5	28'-11"	—
h2(E)	4	#5	4'-6"	—
h3(E)	8	#5	11'-10"	—
h4(E)	8	#5	4'-4"	—
h5(E)	16	#5	6'-0"	└
d(E)	6	#5	2'-2"	┌
s(E)	6	#5	6'-6"	□
Concrete Removal			Cu. Yd.	13.1
Concrete Structures			Cu. Yd.	13.1
Reinforcement Bars, Epoxy Coated			Pound	1310

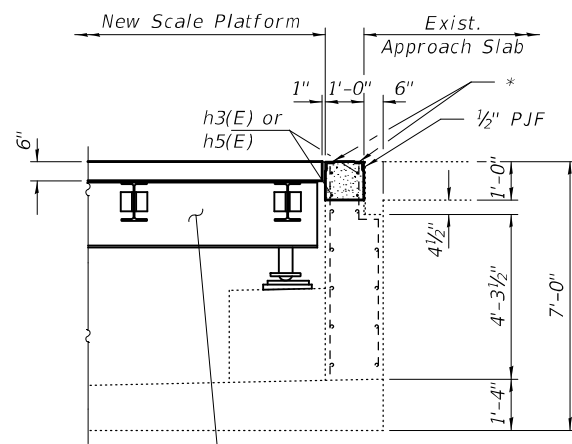
DESIGNED - VHV	EXAMINED	DATE - MAY 3, 2021
CHECKED - ATH	<i>Timothy A. Daburdell</i> ENGINEER OF STRUCTURAL SERVICES	REVISED -
DRAWN - daburdell	PASSED	REVISED -
CHECKED - VHV ATH	<i>Carl R. Meyer</i> ENGINEER OF BRIDGES AND STRUCTURES	REVISED -

**STATE OF ILLINOIS
 DEPARTMENT OF TRANSPORTATION**

**REPLACEMENT DETAILS
 MARSHALL WEIGH STATION**

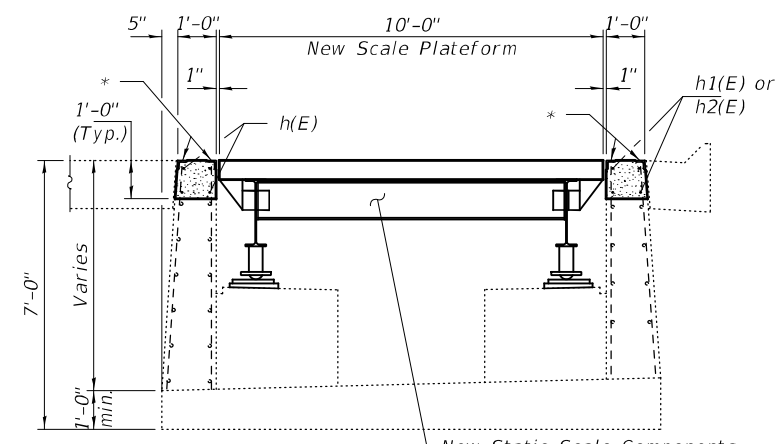
SHEET NO. 3 OF 4 SHEETS

F.A.I. RTE.	SECTION	COUNTY	TOTAL SHEETS	SHEET NO.
70	12-54WS-2	CLARK	23	11
CONTRACT NO. 74A43			ILLINOIS FED. AID PROJECT	



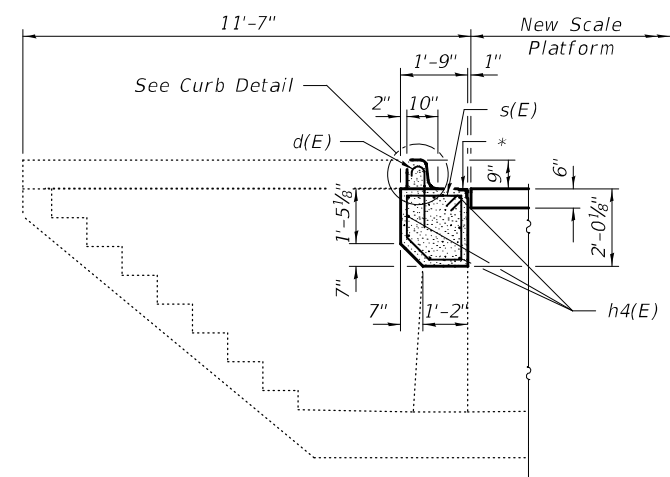
New Static Scale Components
See Special Provisions.

SECTION A-A

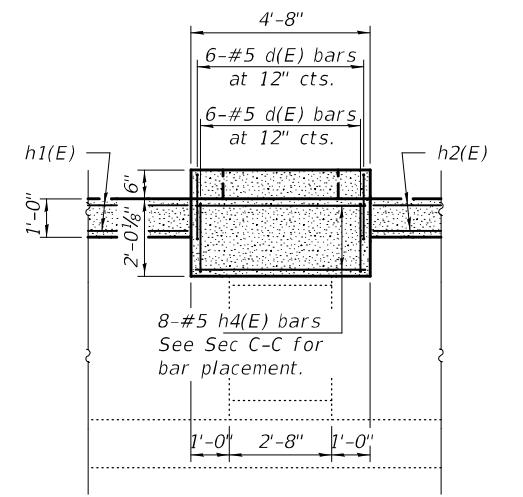


New Static Scale Components
See Special Provisions.

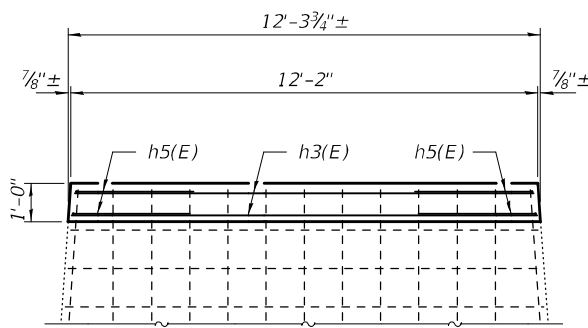
SECTION B-B



SECTION C-C

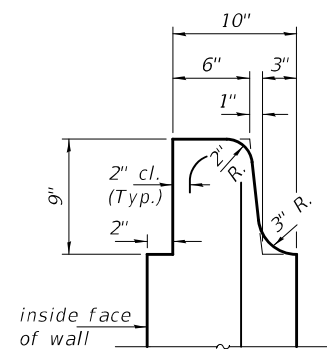


SECTION D-D

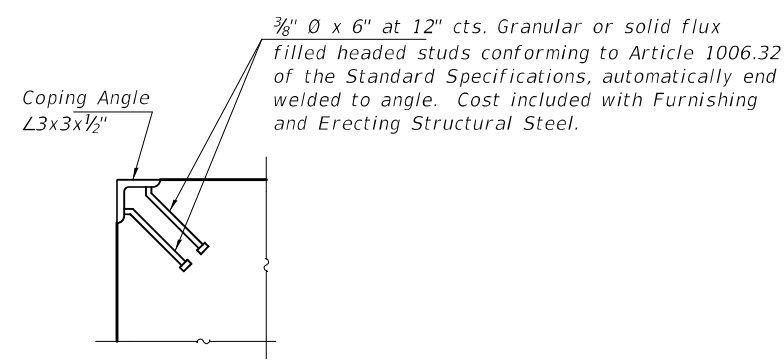


SECTION E-E

* Prop. Coping Angle $\angle 3 \times 3 \times 1/2$ "
(See Coping Detail)

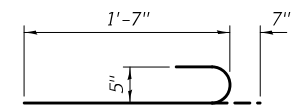


CURB DETAIL

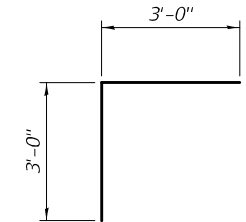


COPING DETAIL

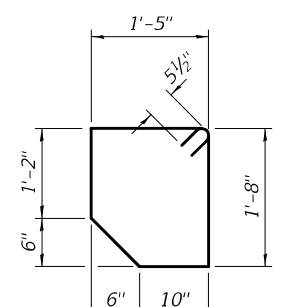
Steel Coping shall be paid for as Furnishing and Erecting Structural Steel.



BAR d(E)



BAR h5(E)



BAR s(E)

DESIGNED - VHV	EXAMINED - <i>Timothy A. Dabur</i>	DATE - MAY 3, 2021
CHECKED - ATH	ENGINEER OF STRUCTURAL SERVICES	
DRAWN - <i>daburdell</i>	PASSED - <i>Carl Ruyter</i>	REVISED -
CHECKED - VHV ATH	ENGINEER OF BRIDGES AND STRUCTURES	REVISED -

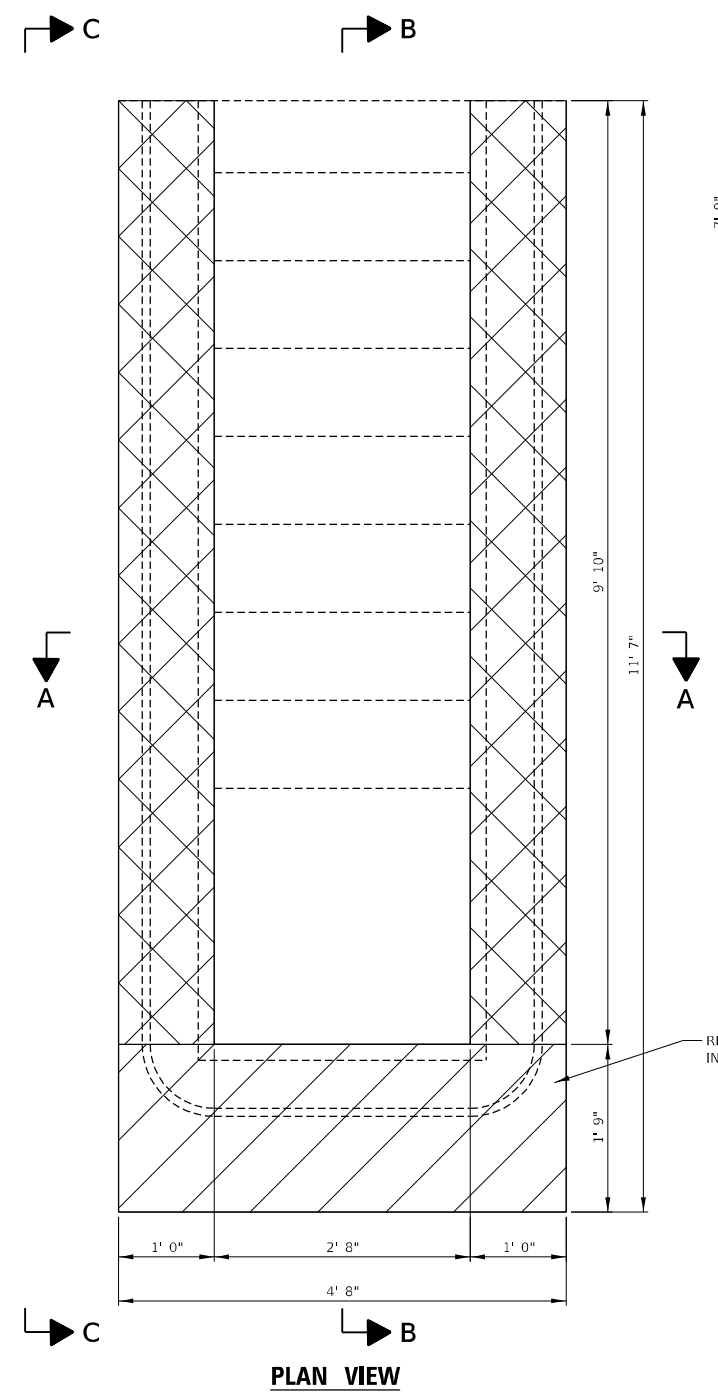
STATE OF ILLINOIS
DEPARTMENT OF TRANSPORTATION

REPLACEMENT DETAILS
MARSHALL WEIGH STATION

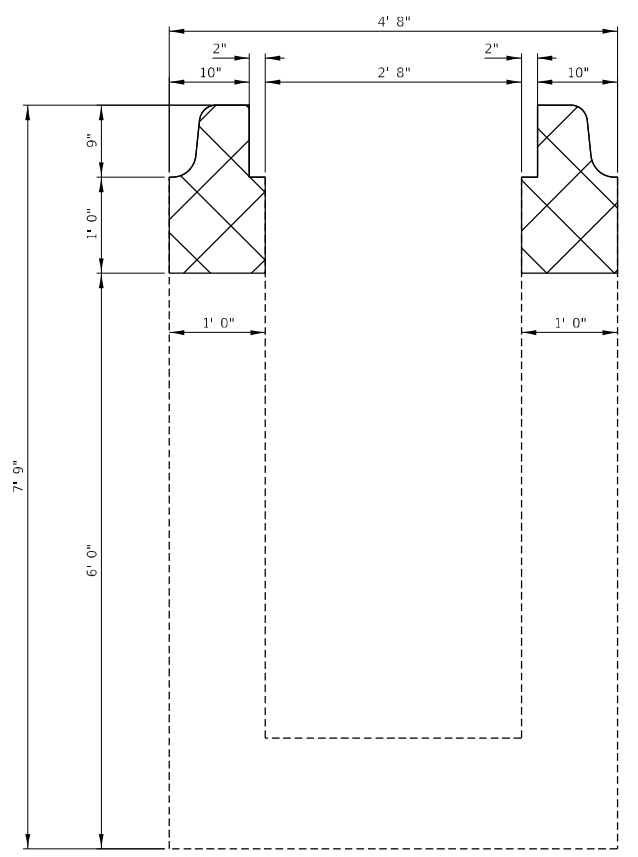
SHEET NO. 4 OF 4 SHEETS

F.A.I. RTE.	SECTION	COUNTY	TOTAL SHEETS	SHEET NO.
70	12-54WS-2	CLARK	23	12
CONTRACT NO. 74A43				
ILLINOIS FED. AID PROJECT				

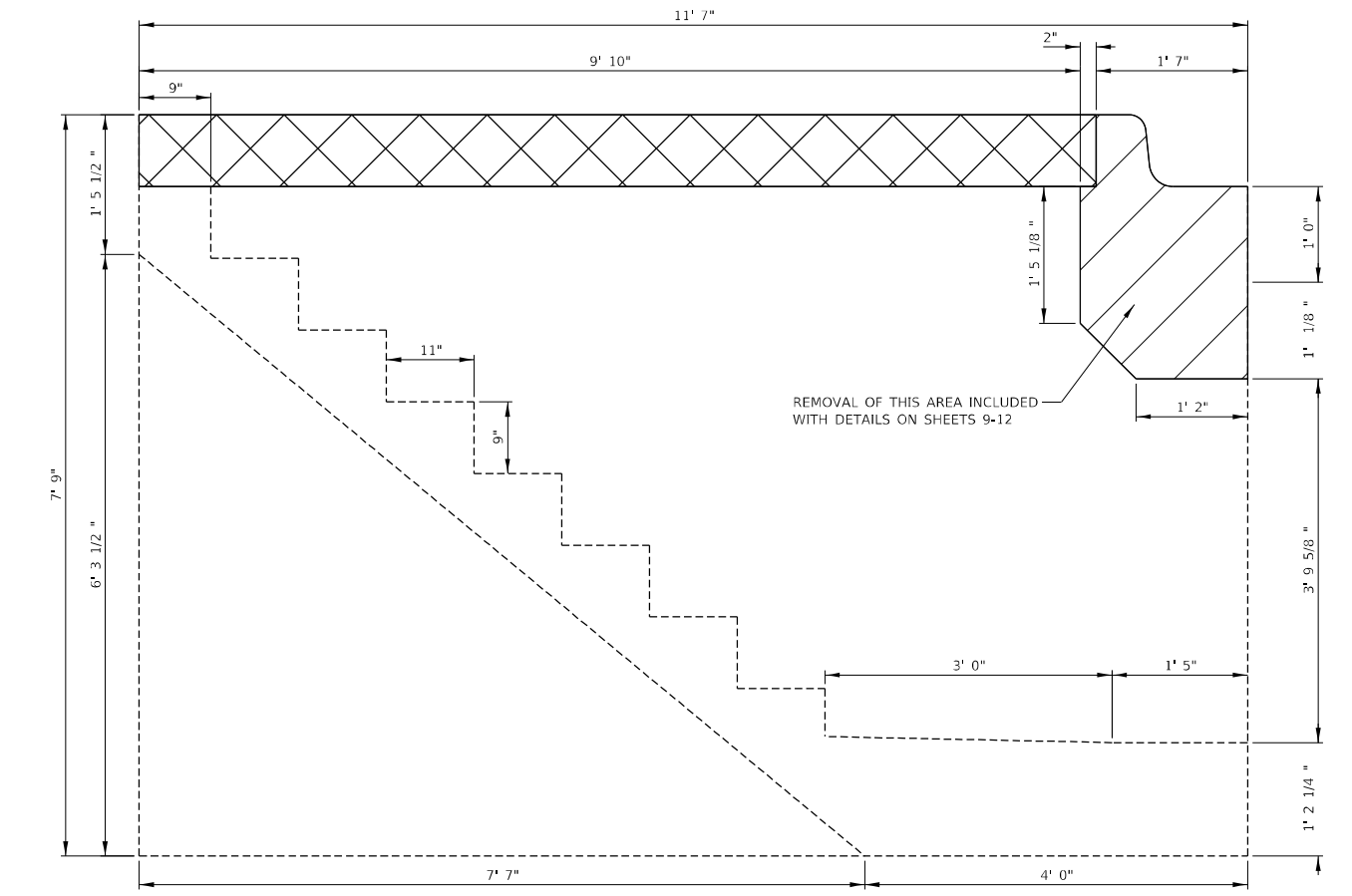
MODEL: Default
 FILE NAME: p:\pub\baronon.dwg
 PROJECT: 7443-CADD\Drawings\DOT - Office\Drawings\7443-CADD\Drawings\7443-CUR-CURB.dwg



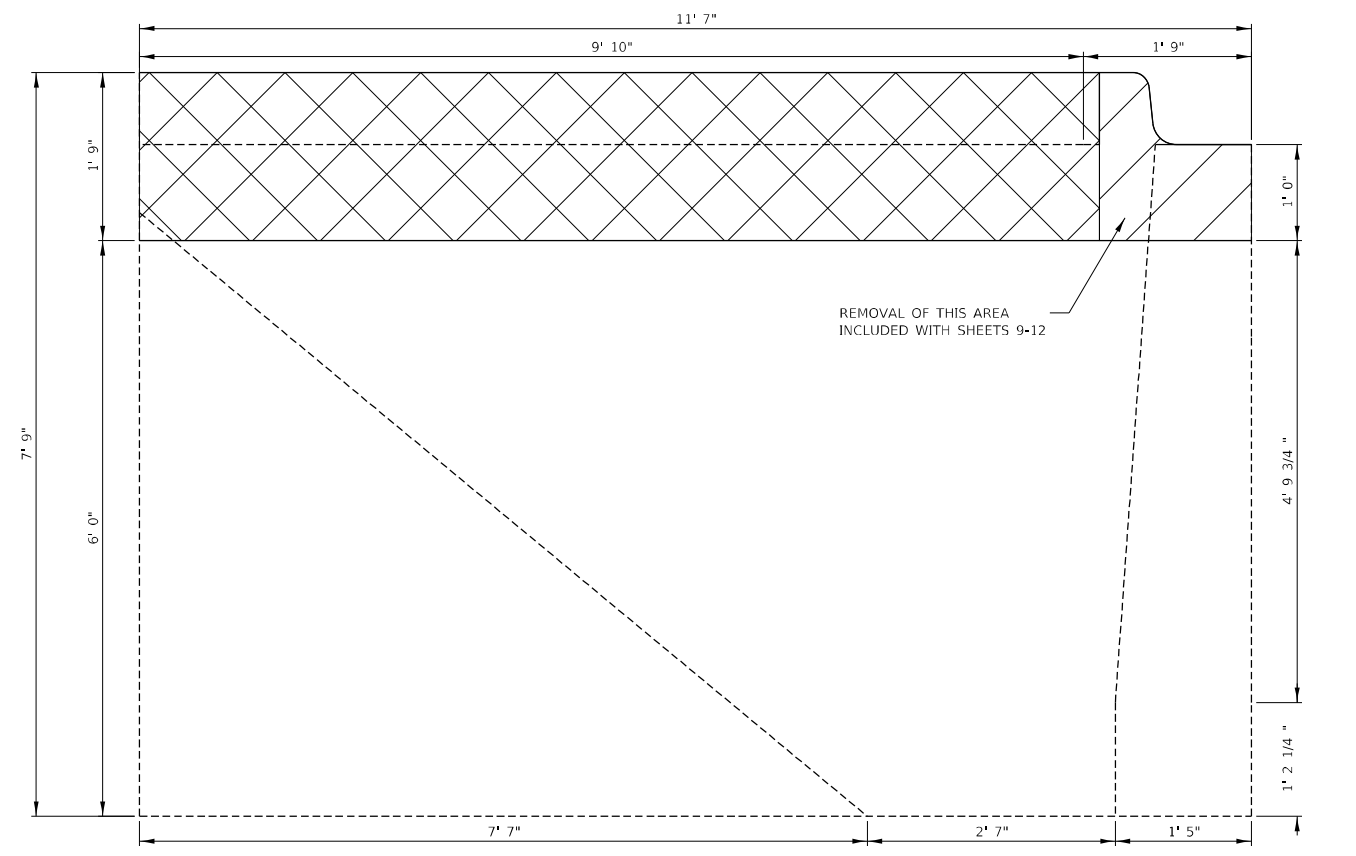
PLAN VIEW



SECTION A-A



SECTION B-B



SECTION C-C

NOTES:
 For existing reinforcement bar locations and sizes see existing structure plans on sheets 15-23.
 Hatched areas indicate removal.

USER NAME = steffenmk	DESIGNED -	REVISED -
PLOT SCALE = 2,0000' / in.	DRAWN -	REVISED -
PLOT DATE = 1/29/2021	CHECKED -	REVISED -
	DATE -	REVISED -

**STATE OF ILLINOIS
 DEPARTMENT OF TRANSPORTATION**

**DETAIL FOR CURB REMOVAL
 AT PIT ENTRANCE**

SCALE: SHEET OF SHEETS STA. TO STA.

F.A.I. RTE.	SECTION	COUNTY	TOTAL SHEETS	SHEET NO.
70	12-54 WS-2	CLARK	23	13
CONTRACT NO. 74A43				
ILLINOIS FED. AID PROJECT				

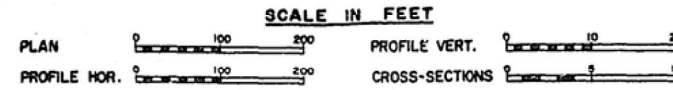
STATE OF ILLINOIS
DEPARTMENT OF PUBLIC WORKS AND BUILDINGS
DIVISION OF HIGHWAYS
PLANS FOR PROPOSED
FEDERAL AID HIGHWAY

FEDERAL AID ROUTE NO.	SEC.	COUNTY	TOTAL SHEETS	SHEET NO.
F.A.I. 70	R-54WS	CLARK	7	1
I.L.L. REG. NO. 4		ILLINOIS	PROJECT I-70-4(90)150	
P-95-051-7				

INDEX OF SHEETS

- 1 COVER SHEET
- 2 GENERAL PLAN & ELEVATION
- 3 DRAINAGE DETAILS
- 4 GENERAL LAYOUT
- 5 REINFORCEMENT
- 6 FIT ENTRANCE DETAIL
- 7 APPROACH SLAB

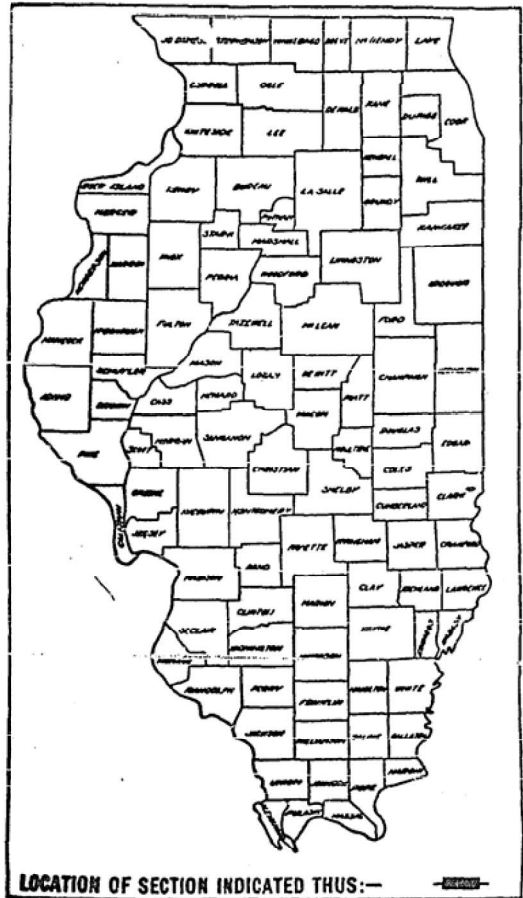
STANDARD 2100, 2130-B & 2179-4



F.A.I. ROUTE 70, SECTION 12-54 WS
PROJECT I-70-4(90)150
CLARK COUNTY

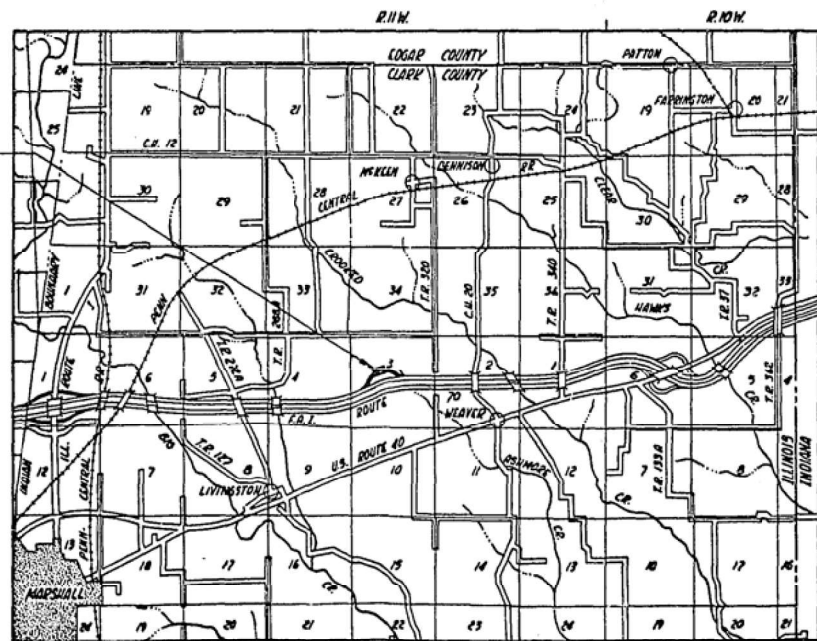
C-95-103-70

AS BUILT



Code No.	ITEM	UNIT	QUANTITY		REMARKS
			Total	Perk.	
408007	PC CONCRETE PAVEMENT 16 1/2-12-16 1/2	SQ. YD.	106	106	---
502001	CLASS A EXCAVATION FOR STRUCTURES	CU. YD.	338	---	338
503004	PROTECTIVE COAT	SQ. YD.	152	106	46
504003	CLASS X CONCRETE	CU. YD.	188.2	1.7	186.5
507001	FURNISHING AND ERECTING STRUCTURAL STEEL	TONS	10,960	---	10,960
511001	REINFORCEMENT BARS	TONS	23,050	9,840	23,210
513004	FURNISHING CROSDOTED PILES UP TO 20 FEET	LIN. FT.	353	64	289
513022	DRIVING TIGER PILES	LIN. FT.	353	64	289
513028	TIGER PILE TIMBER	EACH	1	---	1
603028	STORM SEWERS, TYPE 2 8"	LIN. FT.	90	---	90
810029	BRIDGE SEAT SEALANT	L. SIB	1	---	1

LOCATION OF PROPOSED WEIGH STATION,
SECTION 12-54 WS



SCALE: 1" = 1 MILE

PROJECT LENGTH = 0.00 FT = 0.00 Mile.

STATE OF ILLINOIS
DEPARTMENT OF PUBLIC WORKS AND BUILDINGS
DIVISION OF HIGHWAYS

SUBMITTED: *Dec 22, 70*
J. C. Mulgrew DISTRICT ENGINEER

EXAMINED: *Dec 28, 70*
William A. Arnold CHIEF OF FIELD PLANS AND SURVEY

DRAWN: *Dec 28, 70*
J. C. Mulgrew DISTRICT ENGINEER

APPROVED: *Dec 28, 70*
William A. Arnold CHIEF OF FIELD PLANS AND SURVEY

APPROVED: *Dec 28, 70*
William A. Arnold DIRECTOR

DEPARTMENT OF TRANSPORTATION
FEDERAL HIGHWAY ADMINISTRATION

APPROVED _____ DATE _____

DIVISION ENGINEER

CONTRACT NO. 28328

NOT TO SCALE

STATE OF ILLINOIS
DEPARTMENT OF TRANSPORTATION

EXISTING PLAN SHEETS
FOR INFORMATION ONLY

USER NAME = steffennk	DESIGNED -	REVISED -
PLOT SCALE = 20,0000 "/>		

SCALE:	SHEET 1	OF 9	SHEETS	STA.	TO STA.
--------	---------	------	--------	------	---------

F.A.I. RTE.	SECTION	COUNTY	TOTAL SHEETS	SHEET NO.
70	12-54 WS-2	CLARK	23	15
CONTRACT NO. 74A43				
ILLINOIS FED. AID PROJECT				

MODEL: Default
FILE NAME: p:\pub\harmoon.dwg
PROJECT: 74A43
OFFICE: 74A43
DATE: 1/28/2021

STATE OF ILLINOIS
DEPARTMENT OF PUBLIC WORKS & BUILDINGS
DIVISION OF HIGHWAYS

PROJECT NO.	70/55/WS	COUNTY	CLARK	SHEET NO.	7	2
SHEET NO. 1						6 SHEETS

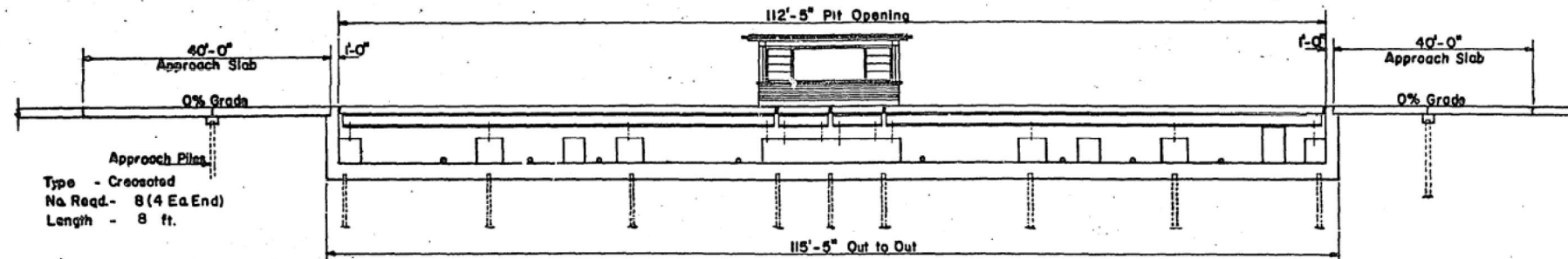
GENERAL NOTES

Class X Concrete shall be used throughout.
All reinforcement bars shall be lapped 24 diameters unless otherwise shown.
Exposed edges shall be beveled $\frac{3}{4}$ " except as otherwise shown.
For backfilling see Standard Specifications.

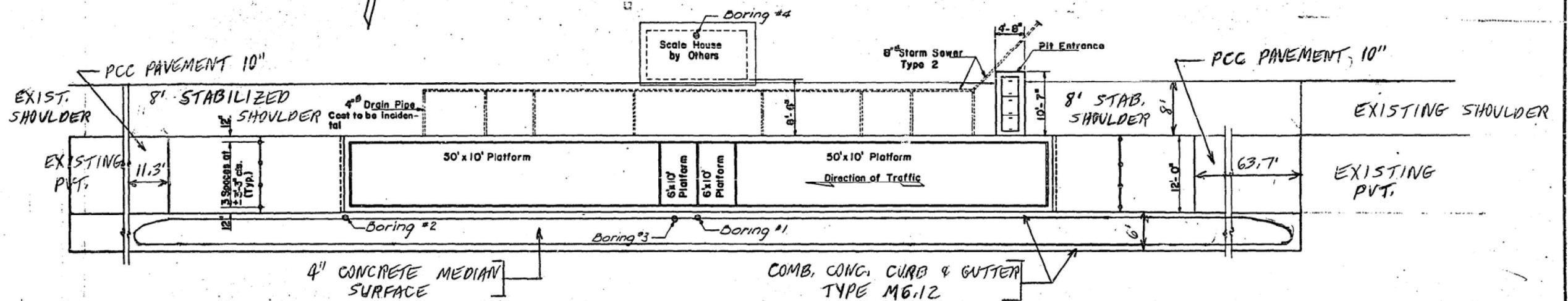
All structural steel shall comply to the Specification for Structural Steel A.S.T.M. designation A-36
All outside surfaces of the pit walls shall be waterproofed in accordance with the Standard Specifications
The Basic Lead Silico Chromate paint system shall be used for shop and field painting of structural steel.

Anchor bolts, nuts and washers shall be furnished by the Pit Contractor and set in accordance with layout furnished by the Scale manufacturer.

The Contractor shall drive one (1) Timber test pile in permanent location as directed by the Engineer before ordering remainder of piles.



LONGITUDINAL SECTION



PLAN

BILL OF MATERIAL

Item		Total
Structural Steel	Lbs.	10,960
Class A Excavation for Structures	Cu.Yds.	538
Class X Concrete	Cu.Yds.	188.2
Reinforcement Bars	Lbs.	33,050
Creosoted Piles (Up to 20')	Lin.Ft.	353
Test Pile (Timber)	Ea.	1
Bridge Seat Sealant	Lump Sum	1
6" Storm Sewer Type 2	Lin. Ft.	90
PCC Pavement (10" x 12" x 10')	Sq. Yds.	106
Protective Coat	Sq. Yds.	152
SUB GRAN MATERIAL - TYPE A	TONS	40.8
STAB SHOULDER 10"	SQ. YD.	237
PCC PAVEMENT 10"	SQ. YD.	100
PAVEMENT FABRIC	SQ. YD.	100
COMB. CONC. C & G - M6.12	LIN. FT.	540
CONCRETE MEDIAN SURF	SQ. FT.	722

*To be applied on top of pedestals

DESIGN STRESSES

$f_c = 1400$ psi Platform
 $f_c = 1000$ psi Pit
 $f_s = 20,000$ psi Reinforcement
 $f_s = 20,000$ psi Struct. Steel

LOADING HS-20-44

DESIGNED	<i>James P. Bunker</i>
CHECKED	<i>A. Barroza</i>
DRAWN	<i>A. Barroza</i>
CHECKED	<i>B</i>

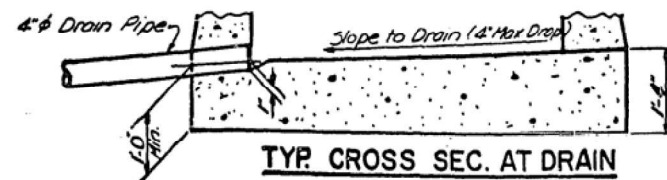
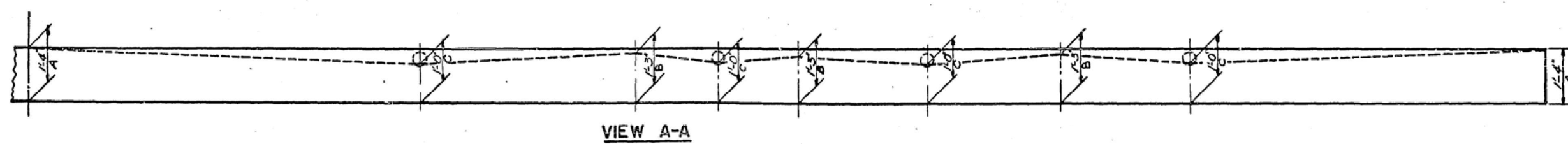
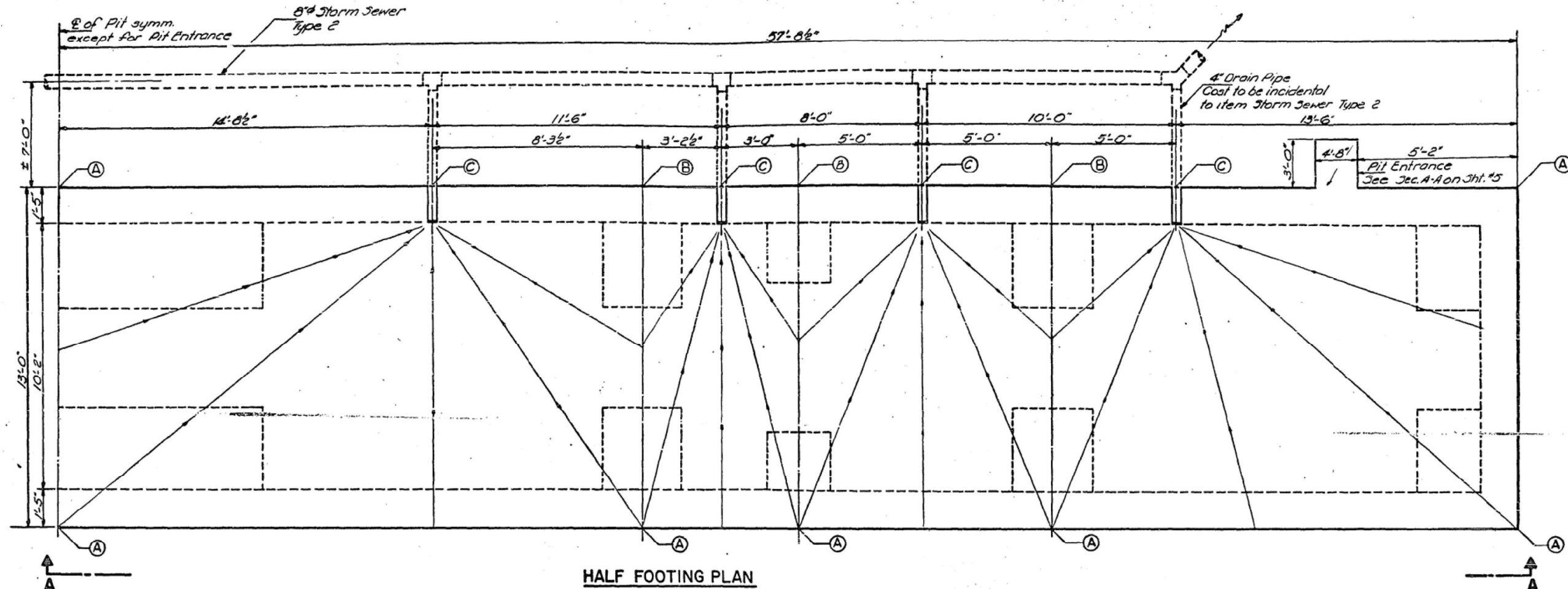
EXAMINED	<i>Paul F. D...</i>
PASSED	
APPROVED	

PROJECT I-70-4(90)150
GENERAL PLAN & ELEVATION
INTERSTATE WEIGHING STATION
WEST BOUND LANES
F.A.I. RT. 70 SEC.12-54 WS
CLARK COUNTY
STA. 295+56.28 MOVED

+32

STATE OF ILLINOIS
DEPARTMENT OF PUBLIC WORKS & BUILDINGS
DIVISION OF HIGHWAYS

SHEET NO.	DATE	BY	TOTAL SHEETS	SHEET NO.
70	12-15-21	CLARK	7	3
SHEET NO. 2 6 SHEETS				



DESIGNED	James M. Barber	EXAMINED	12-15-21
CHECKED	A. Barroza	APPROVED	
DRAWN	A. Barroza		
CHECKED			

DRAINAGE DETAILS
F.A.I. RT. 70 SEC. 12-54WS
CLARK COUNTY
STA. 295+56.28

NOT TO SCALE

USER NAME = steffemk	DESIGNED -	REVISED -
	DRAWN -	REVISED -
PLOT SCALE = 20,0000 * / in.	CHECKED -	REVISED -
PLOT DATE = 1/28/2021	DATE -	REVISED -

STATE OF ILLINOIS
DEPARTMENT OF TRANSPORTATION

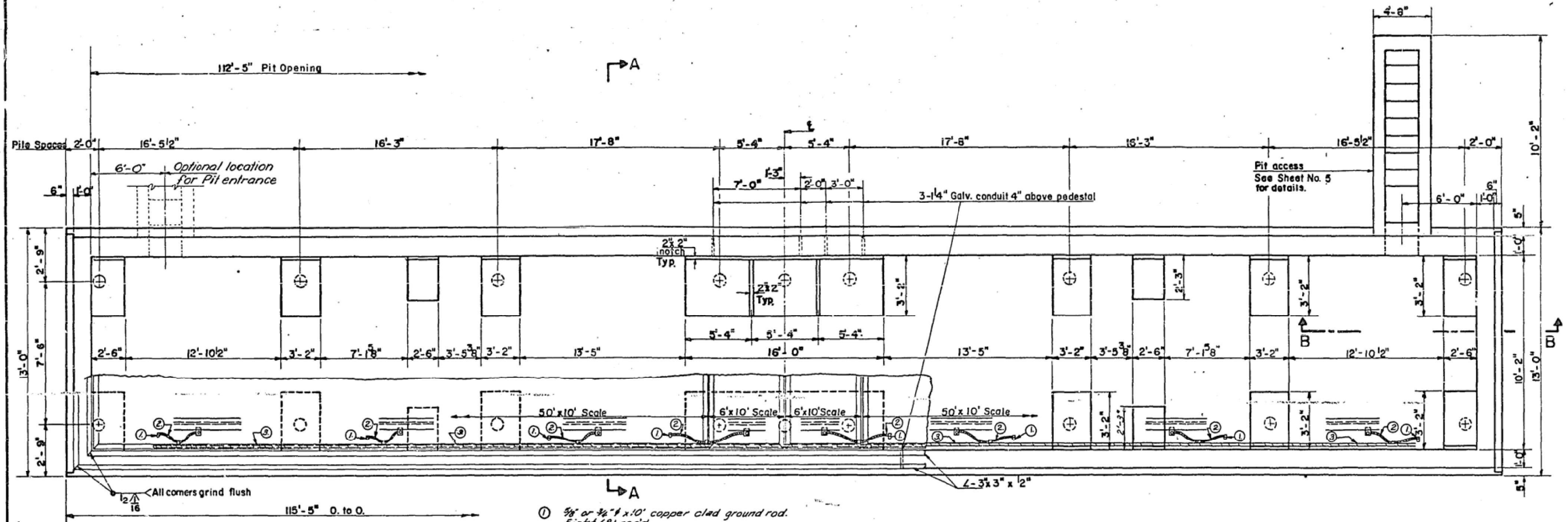
EXISTING PLAN SHEETS FOR INFORMATION ONLY			
SCALE:	SHEET 3	OF 9 SHEETS	STA. TO STA.

F.A.I. RTE.	SECTION	COUNTY	TOTAL SHEETS	SHEET NO.
70	12-54 WS-2	CLARK	23	17
CONTRACT NO. 74A43				
ILLINOIS FED. AID PROJECT				

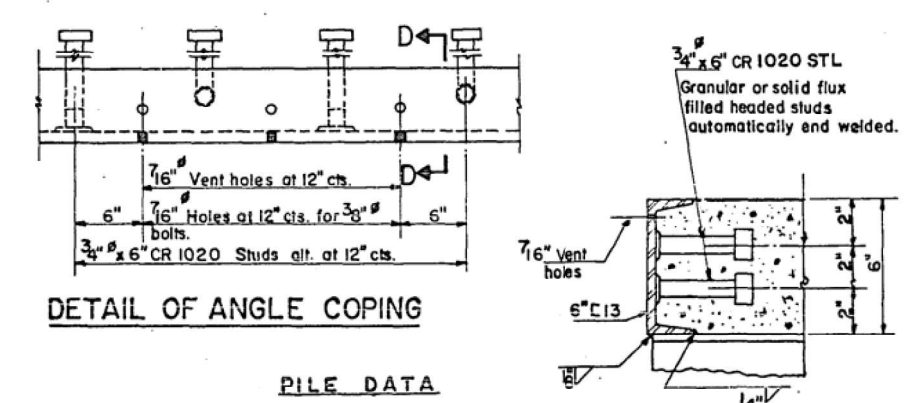
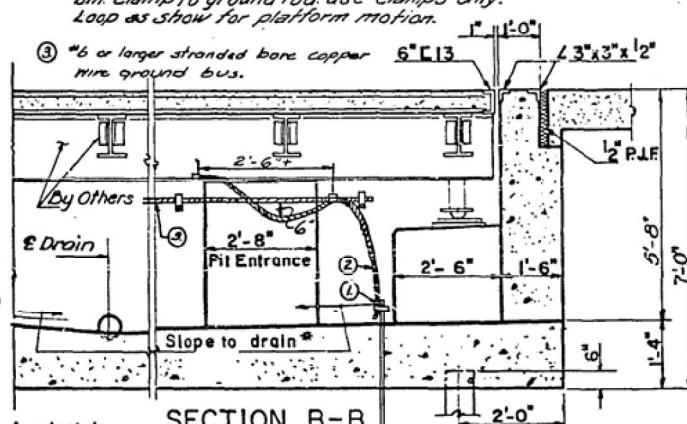
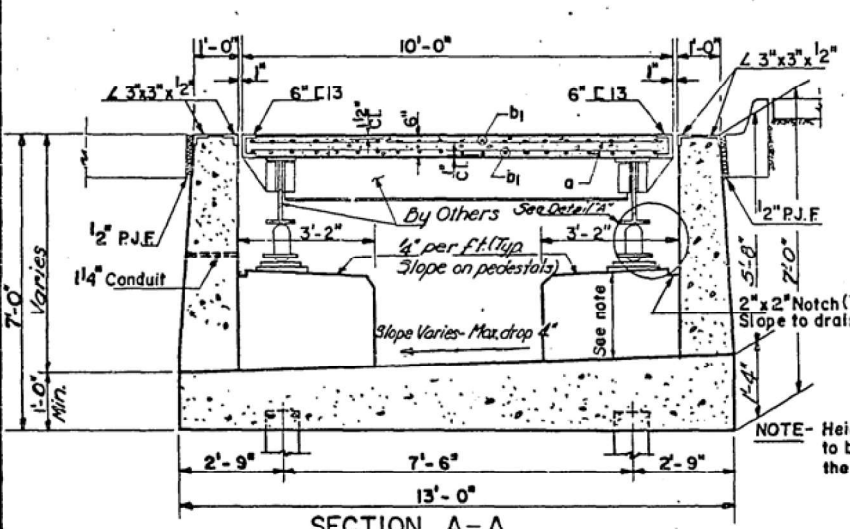
STATE OF ILLINOIS
DEPARTMENT OF PUBLIC WORKS & BUILDINGS
DIVISION OF HIGHWAYS

NOTE: Anchor bolts are to be cast into pedestals at locations supplied by the Scale Manufacturer.

ROUTE NO.	SECTION	COUNTY	TOTAL SHEETS	SHEET NO.
70	12-54 WS	CLARK	7	4
SHEET NO. 3				
6 SHEETS				



- ① 3/8" or 1/2" x 10' copper clad ground rod. Eight (8) req'd.
- ② #6, 3/16" bare copper wire. Continuous from brn. clamp to ground rod. Use clamps only. Loop as show for platform motion.
- ③ #6 or larger stranded bare copper wire ground bus.



PILE DATA

Type -	Creosoted
Est. Length -	17 ft.
No. Req'd. -	18 #
Capacity -	20 Ton.

DESIGNED	EXAMINED
CHECKED	PASSED
DRAWN	APPROVED
CHECKED	

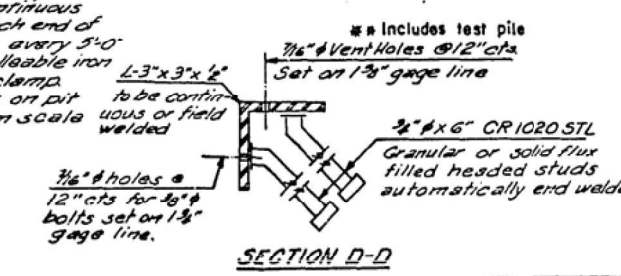
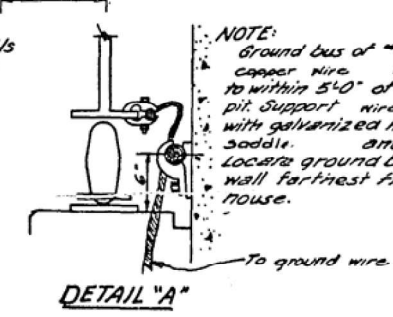
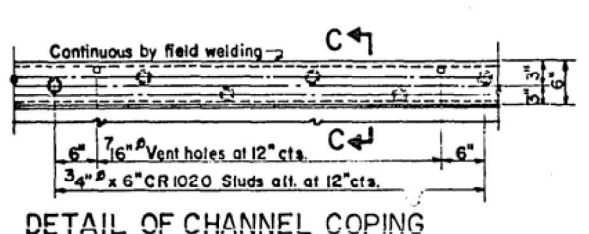
DESIGNED: [Signature]

EXAMINED: [Signature] May 15 1970

CHECKED: [Signature]

DRAWN: A. Baffrizza

CHECKED: [Signature]



GENERAL LAYOUT
FAI. RT. 70 SEC. 12-54 WS
CLARK COUNTY
STA. 295+56.28

NOT TO SCALE

STATE OF ILLINOIS
DEPARTMENT OF TRANSPORTATION

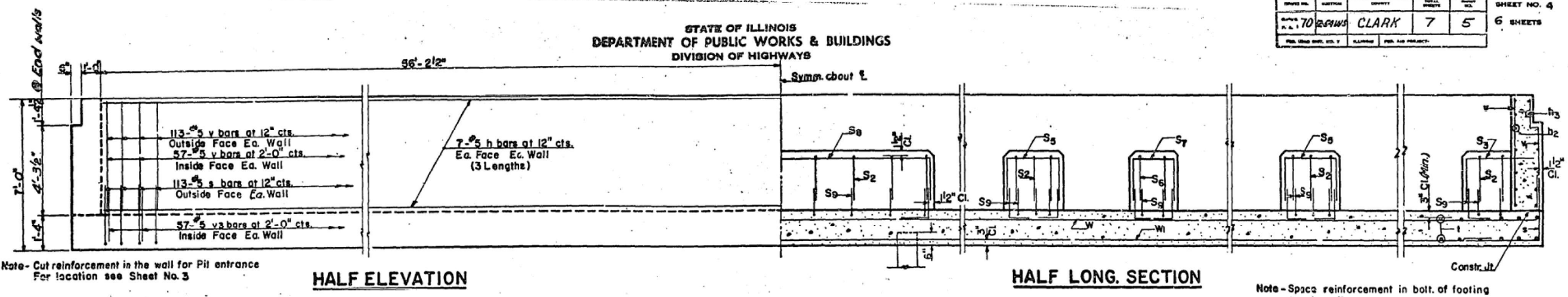
EXISTING PLAN SHEETS
FOR INFORMATION ONLY

USER NAME = steffemk	DESIGNED -	REVISED -	F.A.I. RTE.	SECTION	COUNTY	TOTAL SHEETS	SHEET NO.
PLOT SCALE = 20,0000' / in.	DRAWN -	REVISED -	70	12-54 WS-2	CLARK	23	18
PLOT DATE = 1/28/2021	CHECKED -	REVISED -	CONTRACT NO. 74A43				
	DATE -	REVISED -	ILLINOIS FED. AID PROJECT				

MODEL: Default
 FILE NAME: p:\pubwork\pww\dot\Documents\DOT - Office\Drawings\770\sect12-54 WS-2\CLARK.dwg
 PLOT DATE: 1/28/2021 10:43:00 AM
 PLOT SCALE: 20,0000' / in.
 PLOT SHEET: 1 of 1

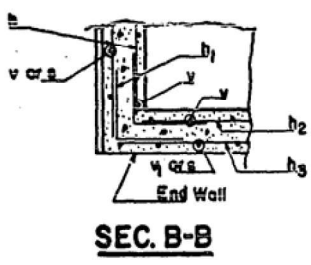
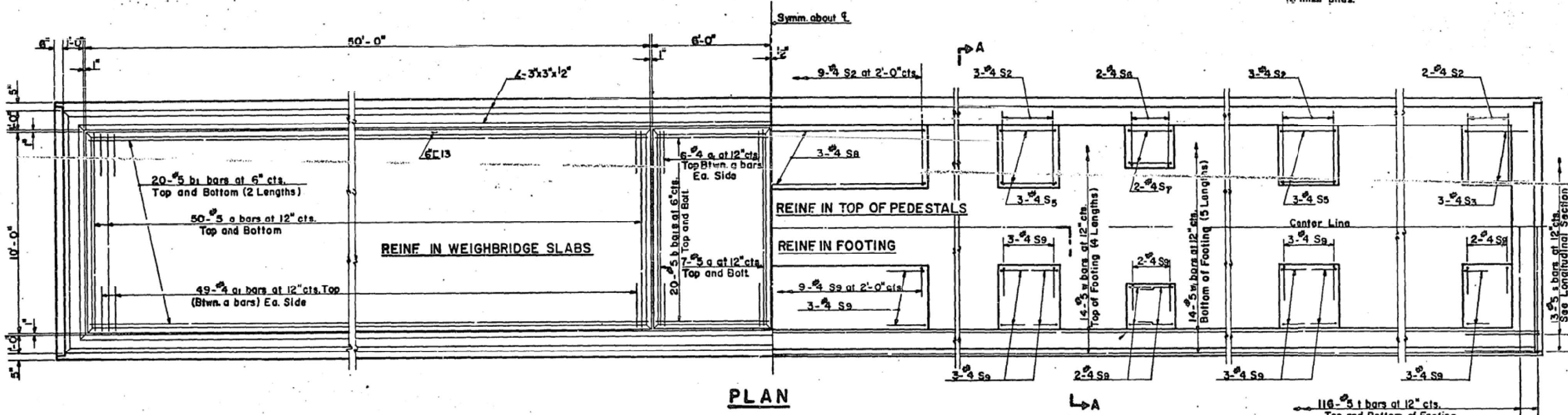
STATE OF ILLINOIS
DEPARTMENT OF PUBLIC WORKS & BUILDINGS
DIVISION OF HIGHWAYS

DESIGN NO.	SECTION	COUNTY	TOTAL SHEETS	SHEET NO.
FAI.RT. 70	12-54 WS-2	CLARK	7	5
6 SHEETS				

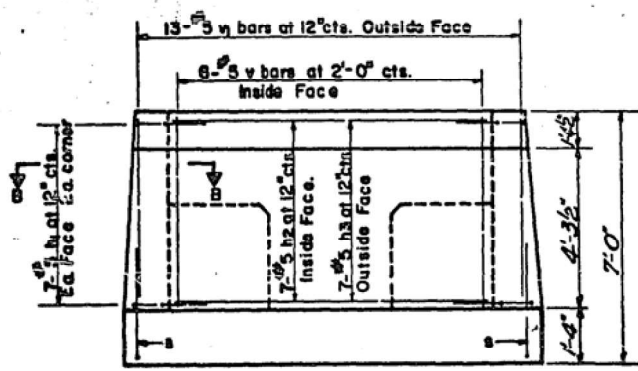


Note - Cut reinforcement in the wall for Pile entrance
For location see Sheet No. 3

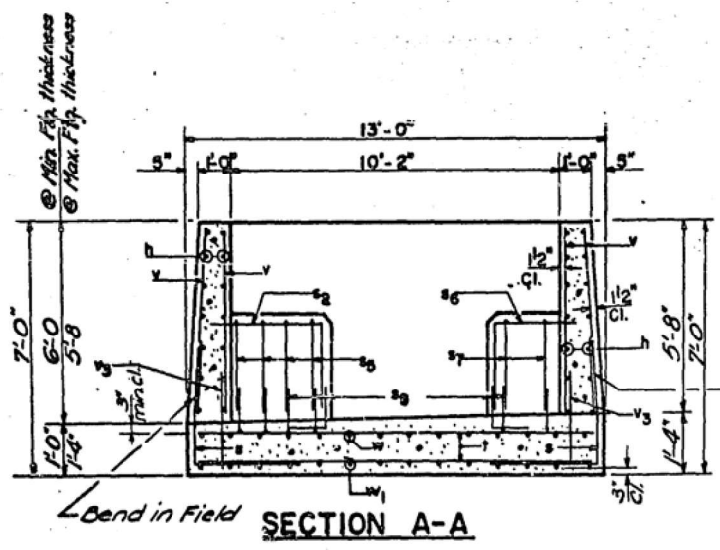
Note - Space reinforcement in bolt. of footing
to miss piles.



SEC. B-B



END VIEW



SECTION A-A

DESIGNED <i>James M. Baker</i>	EXAMINED <i>Paul E. D...</i>
CHECKED <i>A. Barozio</i>	PASSED
DRAWN <i>A. Barozio</i>	APPROVED
CHECKED	

REINFORCEMENT
FAI.RT. 70 SEC. 12-54 WS
CLARK COUNTY
STA. 29⁺56.28

NOT TO SCALE

STATE OF ILLINOIS
DEPARTMENT OF TRANSPORTATION

EXISTING PLAN SHEETS
FOR INFORMATION ONLY

USER NAME = steffemk	DESIGNED -	REVISED -
PLOT SCALE = 20,0000 */ in.	DRAWN -	REVISED -
PLOT DATE = 1/28/2021	CHECKED -	REVISED -
	DATE -	REVISED -

SCALE: SHEET 5 OF 9 SHEETS STA. TO STA.

F.A.I. RTE.	SECTION	COUNTY	TOTAL SHEETS	SHEET NO.
70	12-54 WS-2	CLARK	23	19
CONTRACT NO. 74A43				
ILLINOIS FED. AID PROJECT				

MODEL: Default
 FILE NAME: p:\pub\harronm.dwg
 PLOT DATE: 1/28/2021 10:58:00 AM
 PLOT SCALE: 20,0000 */ in.
 PLOT SHEET: 5 OF 9
 PLOT SHEETS: 23
 PLOT SHEET NO.: 19
 PLOT CONTRACT NO.: 74A43
 PLOT PROJECT: ILLINOIS FED. AID PROJECT

STATE OF ILLINOIS
DEPARTMENT OF PUBLIC WORKS & BUILDINGS
DIVISION OF HIGHWAYS

CONTRACT NO.	SECTION	SHEET	TOTAL SHEETS	SHEET NO.
70	12-54WS	CLARK	7	7
				6 SHEETS

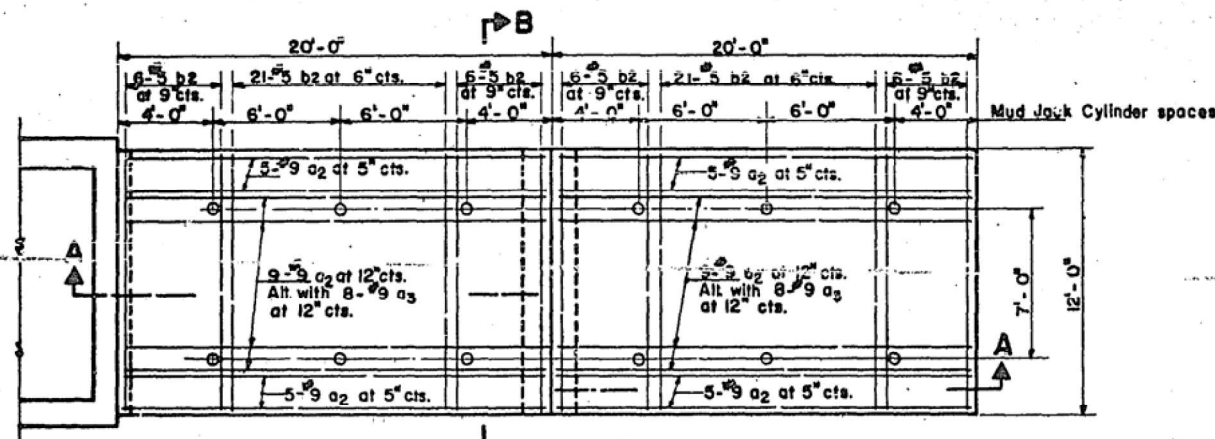
ONE APPR. SLAB
BILL OF MATERIAL

Bar	No.	Size	Length	Shape
a ₂	38	#9	22'-2"	
a ₃	16	#9	18'-2"	
b ₂	66	#5	11'-6"	
p	8	#8	11'-6"	
s ₄	11	#4	4'-6"	
Class X Concrete			Cu.Yds.	0.83
Reinforcement Bars			Lbs.	4,920
P.C.C. Pav't. 18" x 12" x 18" Sq Yds.				53

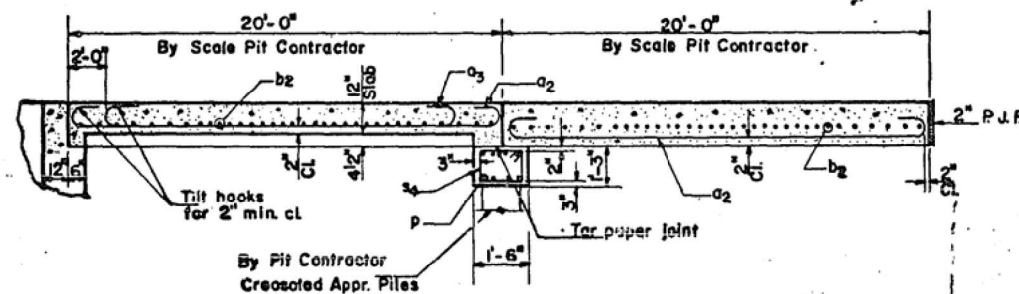
ONE WEIGH STATION
BILL OF MATERIAL

Bar	No.	Size	Length	Shape
a	228	#5	9'-9"	
a ₁	220	#4	2'-9"	
b	80	#5	5'-6"	
b ₁	160	#5	25'-9"	
h	64	#5	39'-6"	
h ₁	56	#5	3'-6"	
h ₂	14	#5	10'-0"	
h ₃	14	#5	11'-9"	
h ₄	8	#4	11'-3"	
h ₅	3	#4	4'-3"	
h ₆	8	#4	2'-9"	
n	26	#4	2'-1"	
s	252	#5	4'-8"	
s ₁	6	#4	6'-6"	
s ₂	50	#3	6'-10"	
s ₃	12	#4	6'-3"	
s ₅	24	#4	8'-6"	
s ₆	8	#4	6'-0"	
s ₇	8	#4	7'-1"	
s ₈	6	#4	21'-5"	
s ₉	146	#4	4'-0"	
t	232	#5	12'-9"	
t ₁	6	#4	10'-6"	
t ₂	6	#4	4'-6"	
t ₃	6	#4	4'-0"	
v	352	#5	5'-6"	
v ₁	26	#5	5'-9"	
v ₂	22	#5	7'-6"	
v ₃	114	#5	2'-9"	
w	56	#5	30'-0"	
w ₁	70	#5	24'-3"	
w ₂	17	#4	4'-3"	
Class X Concrete			Cu.Yds.	186.5
Reinforcement Bars			Lbs.	23,210
Creosoted Piles			Lin Ft.	353
Test Pile (Timber)			Ea	1

*Bars for Pit Entrance. See Sheet No. 5

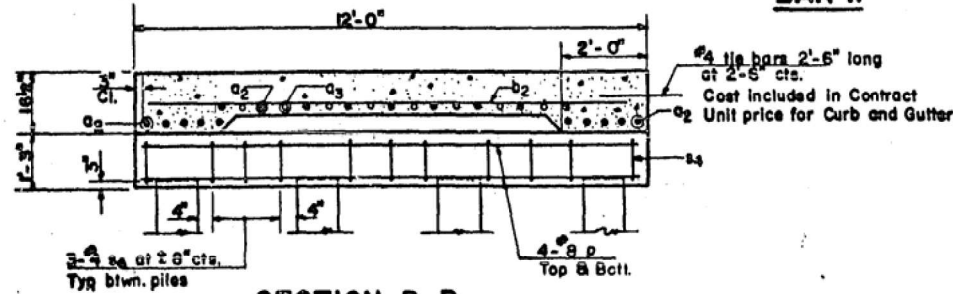


PLAN OF APPROACH SLAB

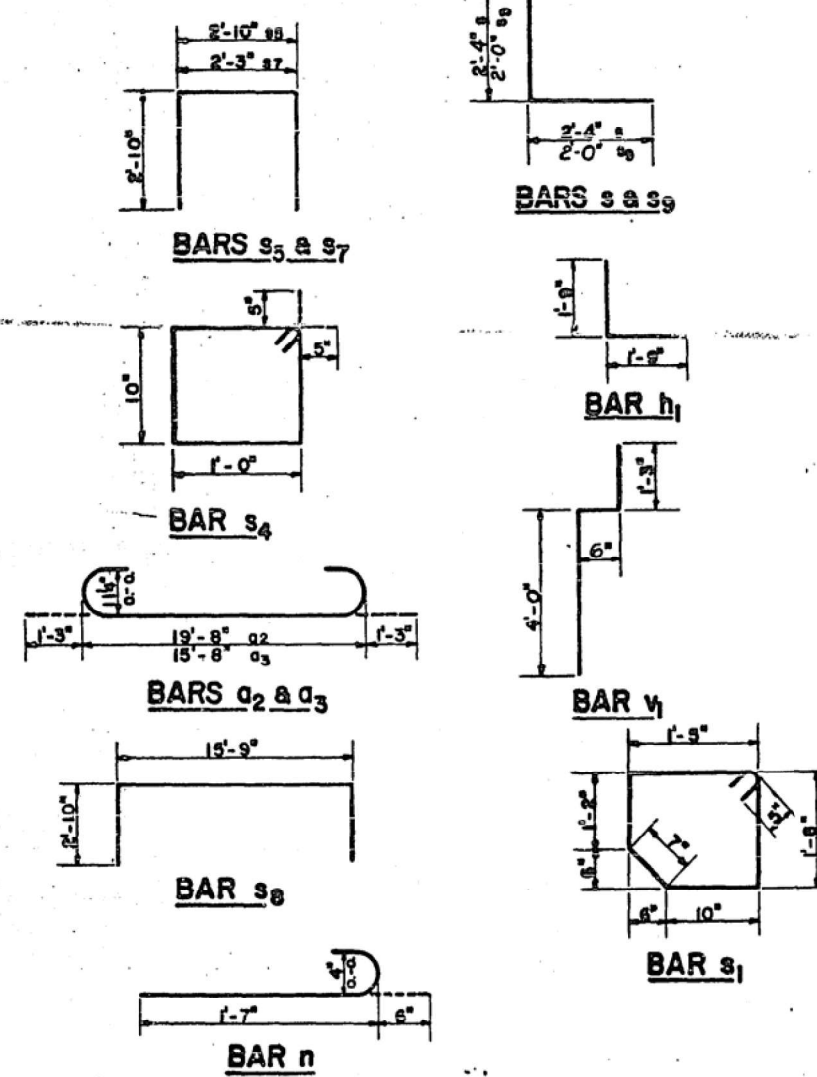


SECTION A-A

Note - For additional information for P.C.C. pavement and approach pavement see Std. 2179 and 2138-2



SECTION B-B
NOT TO SCALE



DESIGNED	James M. Becker
CHECKED	A. Borraza
DRAWN	A. Borraza
CHECKED	B

EXAMINED	James M. Becker
PASSED	
APPROVED	

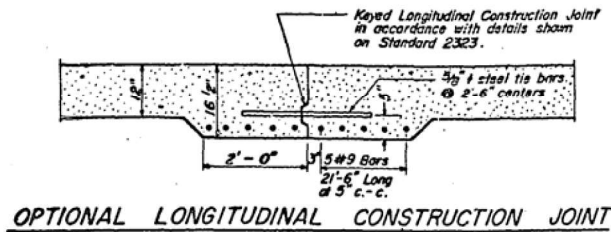
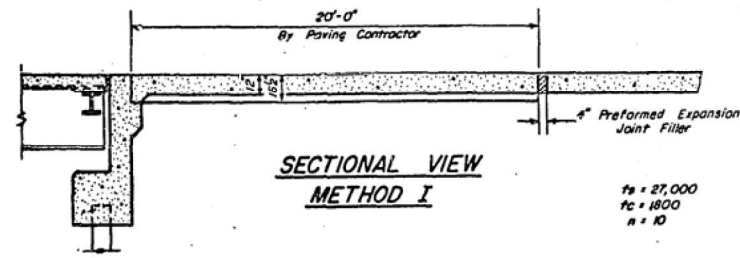
STATE OF ILLINOIS
DEPARTMENT OF TRANSPORTATION

EXISTING PLAN SHEETS
FOR INFORMATION ONLY

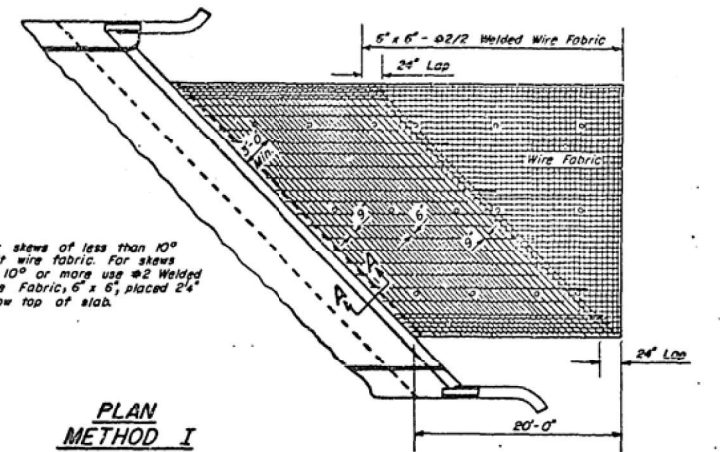
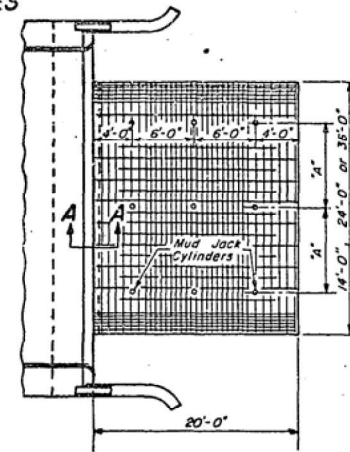
APPROACH SLAB
& BILL OF MATERIAL
F.A.I. RT. 70 SEC. 12-54WS
CLARK COUNTY
STA. 295+56.28

USER NAME = steffemk	DESIGNED -	REVISED -	F.A.I. RTE. 70	SECTION 12-54 WS-2	COUNTY CLARK	TOTAL SHEETS 23	SHEET NO. 21
PLOT SCALE = 20,0000 * / in.	DRAWN -	REVISED -	SCALE: SHEET 7 OF 9 SHEETS STA. TO STA.		CONTRACT NO. 74A43	ILLINOIS FED. AID PROJECT	
PLOT DATE = 1/28/2021	CHECKED -	REVISED -					

DETAILS OF BRIDGE APPROACHES FOR FEDERAL AID INTERSTATE ROUTES



As approved by the Engineer, the Contractor may elect to reduce the widths of pour by use of the Optional Longitudinal Construction Joint shown. Joint shall be located at the edge of Traffic Lane.



For skew of less than 10° omit wire fabric. For skew of 10° or more use #2 Welded Wire Fabric, 6" x 6", placed 2' below top of slab.

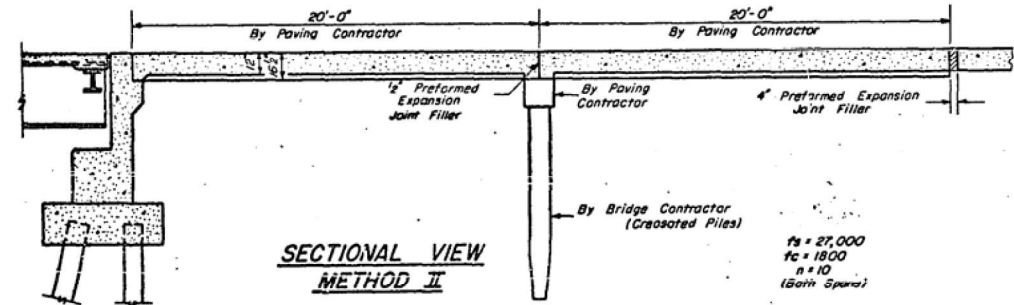
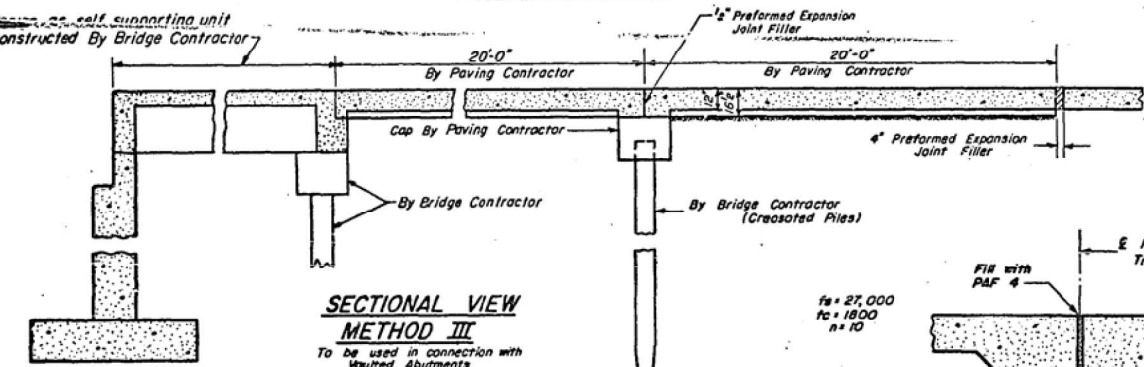


TABLE OF "A" DIMENSIONS

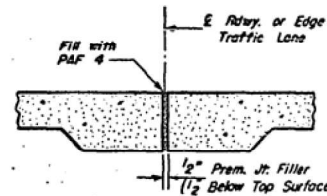
Width of Approach Slab	Dimension "A" (Spacing of Mud Jack Cylinders)
14'	6'-0"
24'	8'-0"
36'	2 Spaces at 8'-0"

Expanded Metal weighing not less than 78 Lbs. per 100 sq. ft. or a welded bar mat weighing not less than 70 Lbs. per 100 sq. ft. having members of equal size in both directions and spaced not over 8" apart may be used instead of the #2 welded wire fabric, 6" x 6", provided the expanded metal or bar mat is furnished at no additional cost to the State.



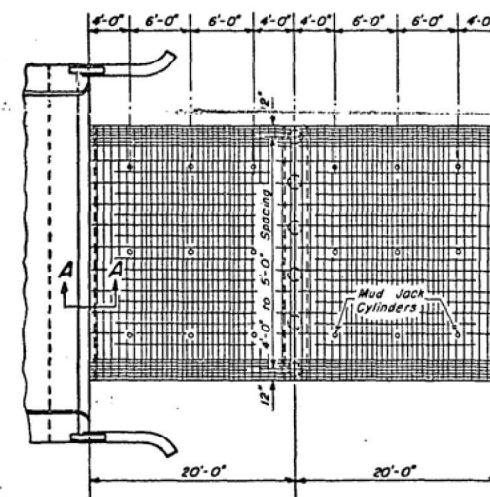
SECTIONAL VIEW METHOD III
To be used in connection with Vented Abutments

Note: Details of Approach Slab by Paving Contractor same as shown for Method II.

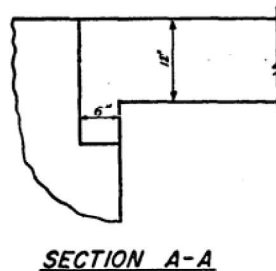


LONGITUDINAL EXPANSION JOINT

To be used when Approach Slabs are greater than 36'-0" wide. Joint shall be placed at edge of Traffic Lane nearest to the E of the total width of Approach Slab.

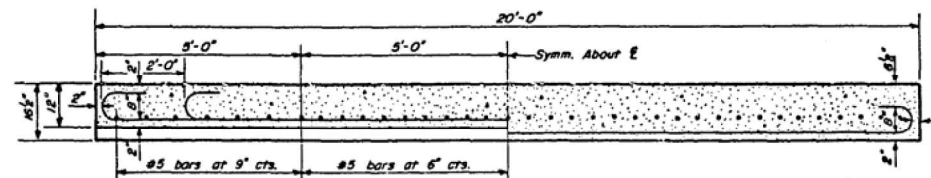


LONGITUDINAL SECTION THRU THICKENED EDGE OF SLAB

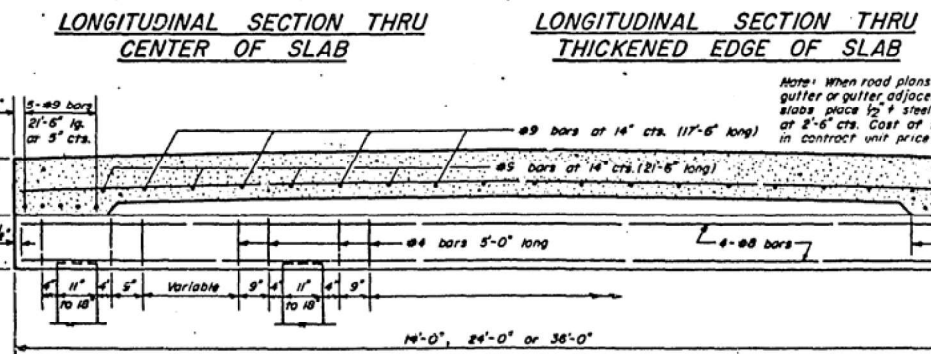


DETAIL OF MUD JACK CYLINDER

Cylinder shall be filled with clay and clay shall be tamped.



LONGITUDINAL SECTION THRU CENTER OF SLAB



SECTIONAL VIEW OF CONCRETE SLAB AND CAP

Note: When road plans show curb and gutter or gutter adjacent to approach slabs place 1/2" x steel tie bars at 2'-6" cts. Cost of tie bars included in contract unit price for Curb & Gutter or Gutter.

The transition for gutter shall be made in 100 feet and will be paid for as CONCRETE GUTTER, of the type specified.

The transition for curb and gutter shall be made in 20 feet and will be paid for as COMBINATION CURB and GUTTER, of the type specified.

The bars in accordance with details for Bulkhead Longitudinal Construction Joint shown on Standard 2323.

GENERAL NOTES

- The slab or slabs will be paid for at the contract unit price for PORTLAND CEMENT CONCRETE PAVEMENT (16 1/2"-12"-16 1/2").
- The concrete cap will be paid for at the contract unit price for CLASS X CONCRETE.
- All Reinforcement Bars will be paid for at the contract unit price for REINFORCEMENT BARS, except as noted.
- The Welded Wire Fabric, Mud Jack Cylinders and Preformed Expansion Joint Filler shall be included in the unit price bid for PORTLAND CEMENT CONCRETE PAVEMENT (16 1/2"-12"-16 1/2").
- Preformed Expansion Joint Filler shall conform to Section 715 of the Standard Specifications.
- Width of Bridge Approach Slab pours shall be determined before the reinforcement bars are fabricated.
- The Contractor shall, after completion of the finishing operations, mark the location of the Mud Jack Cylinders.

STATE OF ILLINOIS DEPARTMENT OF PUBLIC WORKS AND BUILDINGS DIVISION OF HIGHWAYS	ISSUED 12-18-58	REVISIONS
PASSED Oct. 15 1969 ENGINEER OF BRIDGE AND TRAFFIC STRUCTURES	WAS 2-2-59 CET 10-22-59 WAS 12-9-59	W.F. 5-10-67 W.F. 7-15-67 G.R. 8-1-68
APPROVED Oct. 15 1969 ENGINEER OF DESIGN	W.F. 10-1-63 KHW 7-29-64 W.F. 10-28-64	JKP 10-15-69

NOT TO SCALE

STATE OF ILLINOIS
DEPARTMENT OF TRANSPORTATION

EXISTING PLAN SHEETS
FOR INFORMATION ONLY

STANDARD 2138-B

DESIGNED: CET JR. CHECKED: WAS JR. DRAWN: WAS JR. 24 NOV 1968

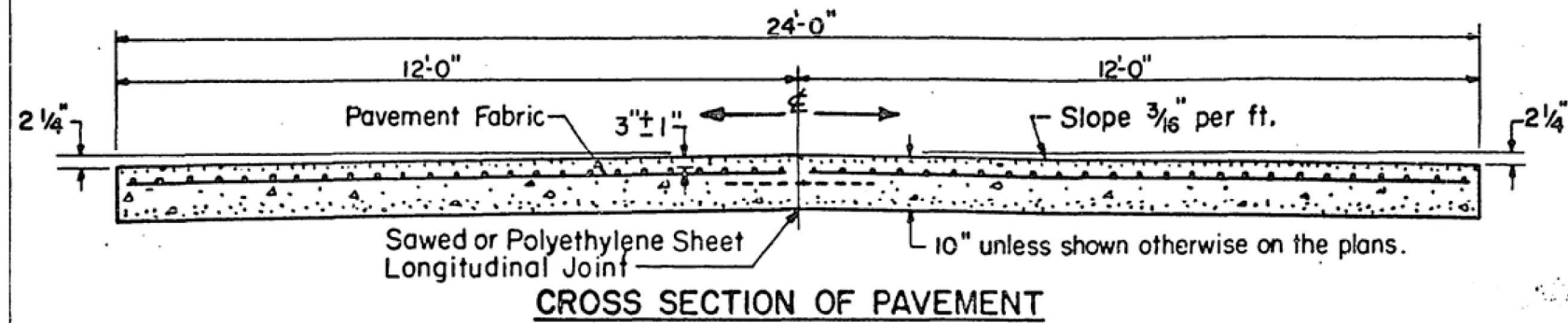
USER NAME = steffemk	DESIGNED -	REVISED -
	DRAWN -	REVISED -
PLOT SCALE = 20,0000 */ in.	CHECKED -	REVISED -
PLOT DATE = 1/28/2021	DATE -	REVISED -

SCALE: SHEET 8 OF 9 SHEETS STA. TO STA.

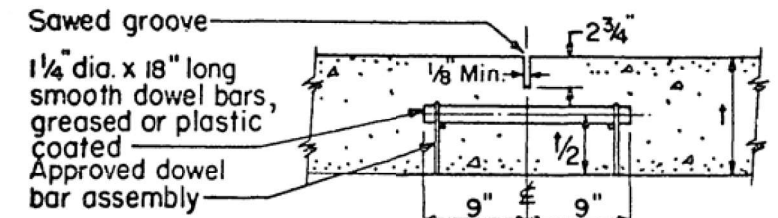
F.A.I. RTE.	SECTION	COUNTY	TOTAL SHEETS	SHEET NO.
70	12-54 WS-2	CLARK	23	22
CONTRACT NO. 74A43				
ILLINOIS FED. AID PROJECT				

STANDARD DESIGN

24 FT. PORTLAND CEMENT CONCRETE PAVEMENT

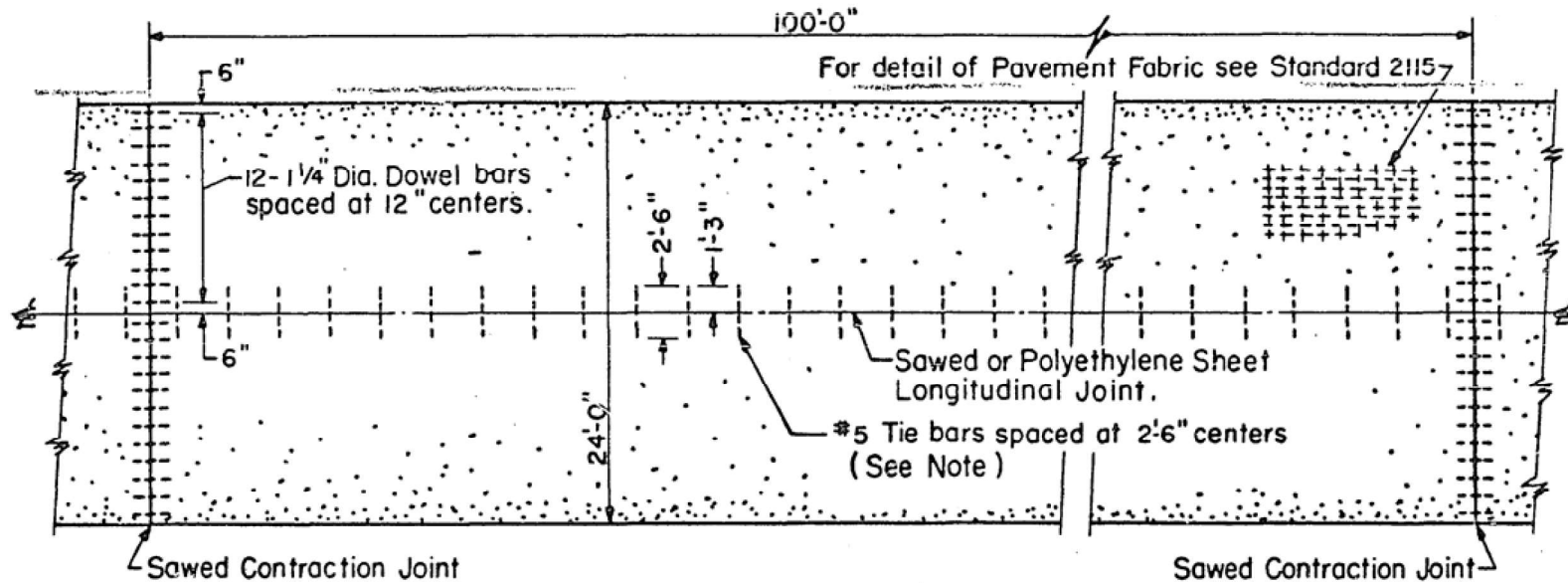


CROSS SECTION OF PAVEMENT

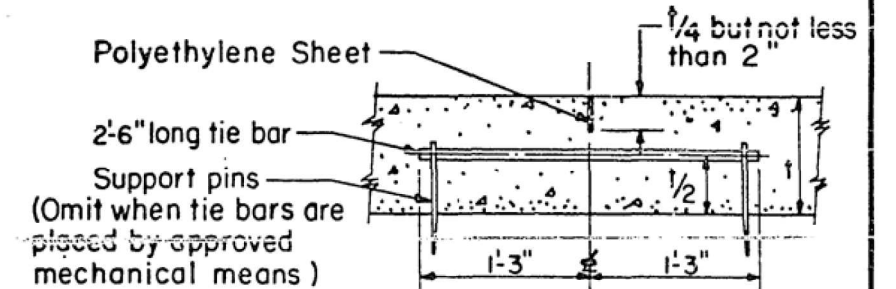


DETAIL OF SAWED CONTRACTION JOINT

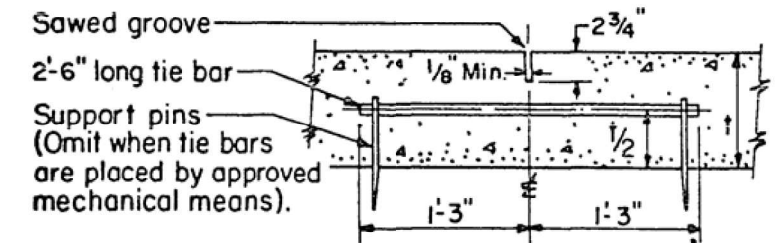
NOTE
#4 Tie bars shall be used when pavement is less than 10 inches thick.



PLAN OF PAVEMENT



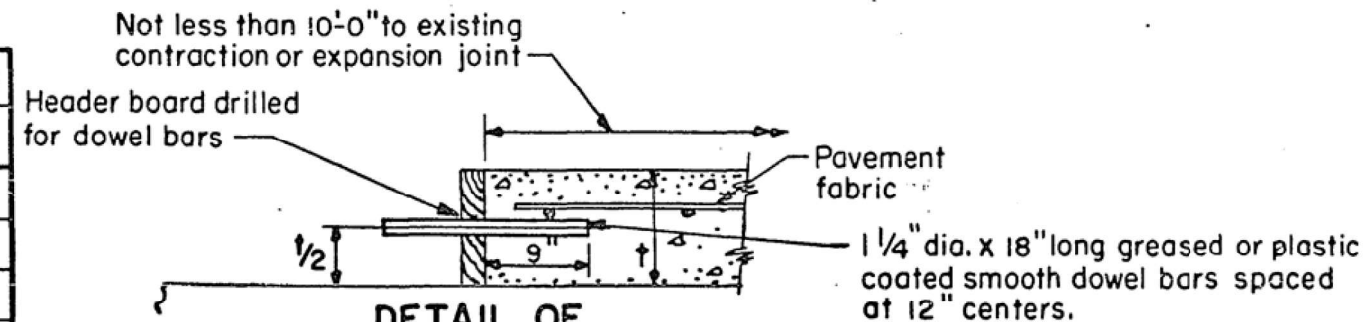
DETAIL OF POLYETHYLENE SHEET LONGITUDINAL JOINT



DETAIL OF SAWED LONGITUDINAL JOINT

Sawed joints shall be sealed with a hot poured material meeting the requirements of the Tentative Specifications for Concrete Joint Sealer, Hot-Poured Elastic Type, A.S.T.M. Designation: D1190-52 T, or sealed with a cold applied, ready-mixed concrete joint sealing compound meeting the requirements of Article 716.03.

STATE OF ILLINOIS DEPARTMENT OF PUBLIC WORKS & BUILDINGS DIVISION OF HIGHWAYS		ISSUED 1-29-63	
		REVISIONS	
PASSED Oct. 15, 1969		W.F.	4-1-65
<i>A. W. Wauson</i> Engineer of Road Plans and Contracts		G.R.	8-1-68
APPROVED Oct. 15, 1969		W.F.	1-15-69
<i>W. E. Baumann</i> Engineer of Design		W.F.	10-15-69



DETAIL OF TRANSVERSE CONSTRUCTION JOINT
NOT TO SCALE

STANDARD 2179-4

MODEL: Default
FILE NAME: p:\pubworks\pww\dot\documents\dot\office\div\div\77443-4-63-std-4.dwg

USER NAME = steffemk	DESIGNED -	REVISED -
	DRAWN -	REVISED -
PLOT SCALE = 20,0000 * 1/ in.	CHECKED -	REVISED -
PLOT DATE = 1/28/2021	DATE -	REVISED -

STATE OF ILLINOIS
DEPARTMENT OF TRANSPORTATION

EXISTING PLAN SHEETS FOR INFORMATION ONLY	
SCALE:	SHEET 9 OF 9 SHEETS STA. TO STA.

F.A.I. RTE.	SECTION	COUNTY	TOTAL SHEETS	SHEET NO.
70	12-54 WS-2	CLARK	23	23
CONTRACT NO. 74A43				
ILLINOIS FED. AID PROJECT				