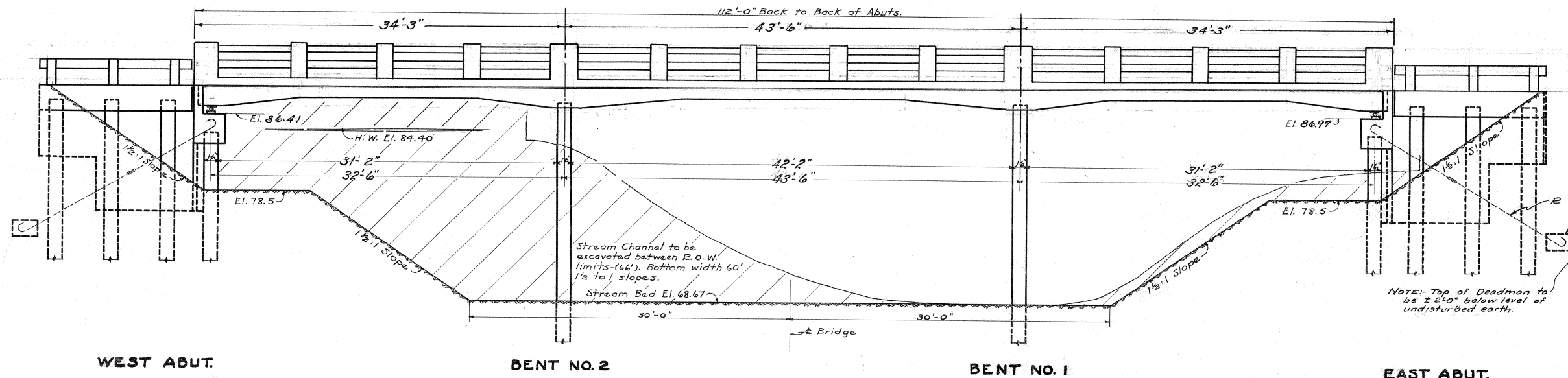


B.M. - Flag Nail in Stump, Left Sta. 45+97 - Elev. 82.86  
 Existing Structure - Low Truss - Steel - Span 78' - Rdwy 14'  
 Stone Masonry Abutments. Old Steel to be salvaged for re-use.  
 To be removed by Contractor.

STATE OF ILLINOIS  
 DEPARTMENT OF PUBLIC WORKS & BUILDINGS  
 DIVISION OF HIGHWAYS

BOND ISSUE ROUTE NO.	SECTION	COUNTY	TOTAL SHEETS	SHEET NO.	SHEET NO. 1
FED. ROAD DIST. NO. 7	ILLINOIS	FED. AID PROJECT		4 SHEETS	

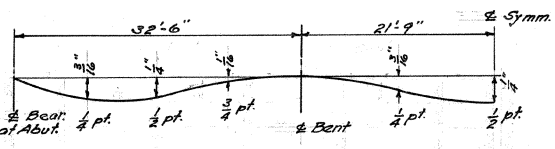
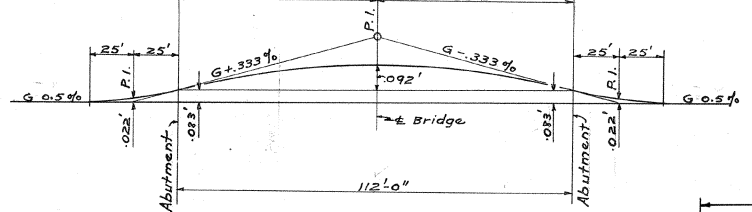
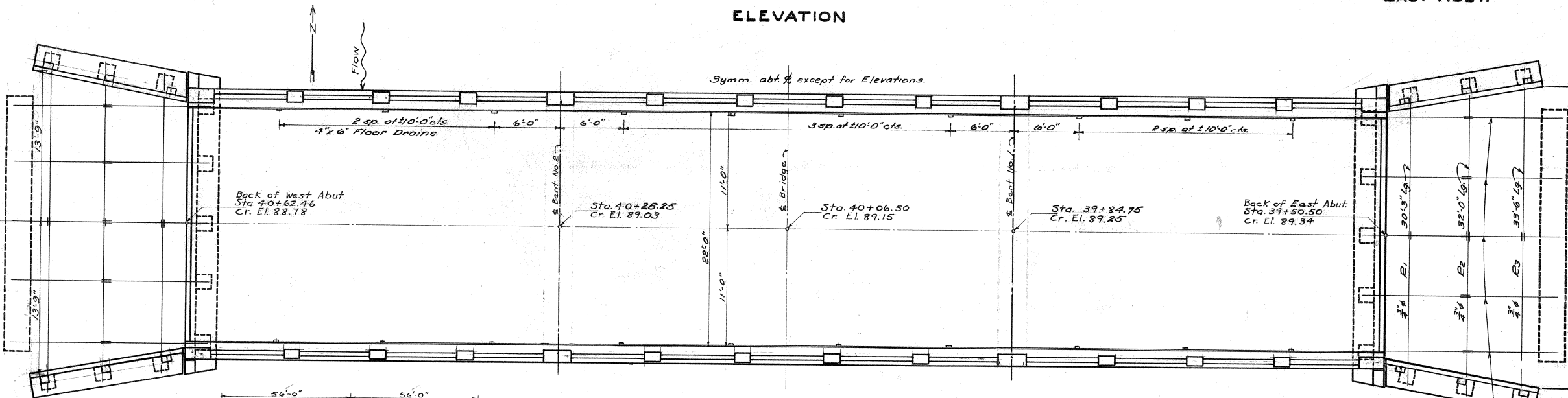


**GEN'L. NOTES**  
 Class X Concrete shall be used throughout. Concrete Floor Slab shall be finished in accordance with Art 573 (c) of the Standard Specifications. The Concrete Floor Slab shall be poured in one continuous operation. Premolded Joint Filler shall conform to Arts. 105.65 and 105.66 of the Suppl. Specs. Handrail Concrete shall be used in Handrails. Curbs and handrail shall not be poured until after the falsework has been removed.

Inspection of Structural Steel by Illinois Division of Highways before painting. All Rollers, Bearing Plates, Anchor Bolts and Lead Plates shall be furnished, painted and set in accordance with Art 50.3 (d) of the Suppl. Specs. and Art 109.1 (c) of the Special Provisions.

All Structural Steel shall receive one shop coat of Blue Lead Paint after inspection. All Structural Steel shall receive two field coats of White Lead Paint. Paint shall be furnished by the Contractor.

All Turnbuckles shall be galvanized steel. All Rods shall be 0.2% copper bearing structural steel. The Contractor shall drive three Test Piles as directed by the Engr. before casting piles. Piles in Wing shall be driven to a min. penetration of 10ft below undisturbed earth and have a min. capacity of 10 tons. Piles in Abutment shall be driven to a min. penetration of 15 ft below bed of stream and have a min. capacity of 20 tons. Piles in Bents shall be driven to a min. capacity of 30 tons. Excavation for Concrete Backing shall be made before driving piles.



**BILL OF MATERIAL**

ITEM	SUPERST	SUBST	TOTAL
Class X Concrete	150.1	51.2	201.3
Reinforcement Bars	35090	4580	39670
Structural Steel	1470	-	1470
Hardware	-	30	30
Rods	-	970	970
Name Pl.	1	-	1
Removal of Exist. Struct.	1	-	1
Test Piles	-	3	3
Precast Conc. Piles (12x30) Lin.Ft.	-	360	360
" " " (10x40) Lin.Ft.	-	400	400
" " " (10x40) Lin.Ft.	-	480	480
Channel Excavation (Est.) Cu.Yds.	-	1075	1075
Handrail Concrete	6.6	1.5	8.1

1/4" R-25'-6" Long  
 SEE SHEET #3 FOR ROD DETAILS

COMPUTED *Samuel Green*  
 CHECKED *B. M. K.*  
 DRAWN *W. C.*  
 CHECKED *B. M. K.*  
 ASSEMBLED *R. Wagner*  
 CHECKED *R. S.*  
 EXAMINED *H. F. W...*  
 PASSED *H. E. Surman*  
 APPROVED *M. J. F...*

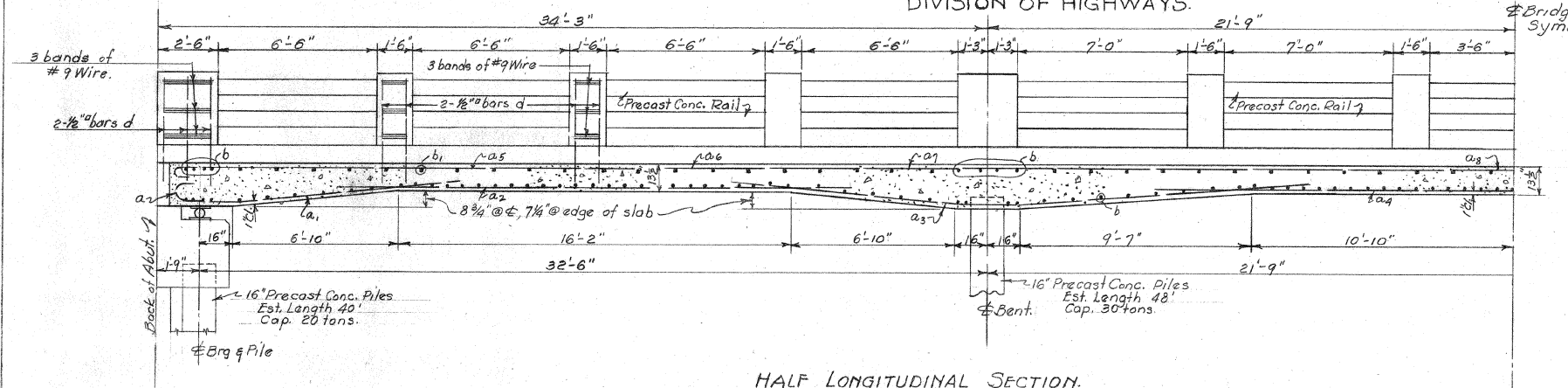
**DEAD LOAD DEFLECTION DIAGRAM**

H.15 Loading

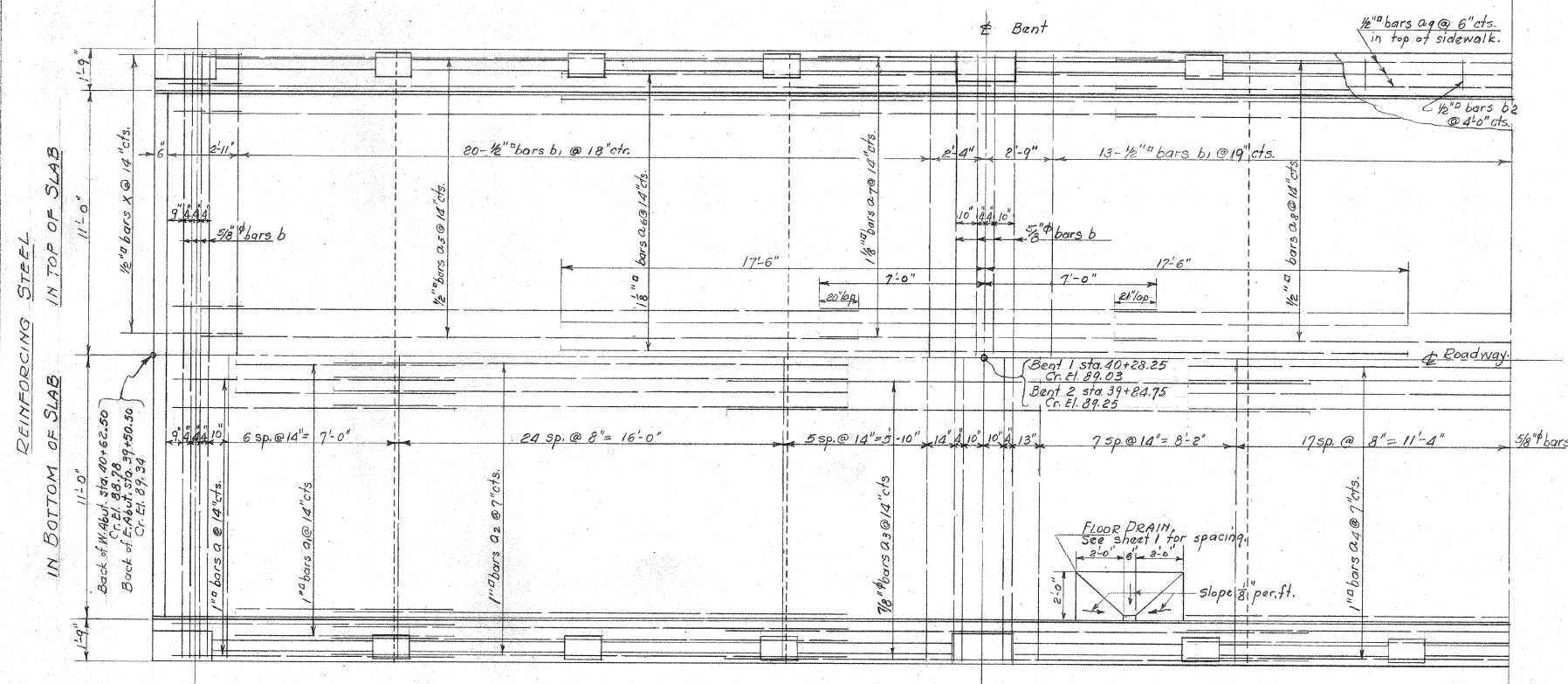
**HICKORY WYTHE BRIDGE**  
**S.A.R.T.E. 6 - SEC. 18 M.F.T.**  
**DOUGLAS COUNTY**  
**STATION 40+06.5**

STATE OF ILLINOIS  
DEPARTMENT OF PUBLIC WORKS & BUILDINGS  
DIVISION OF HIGHWAYS.

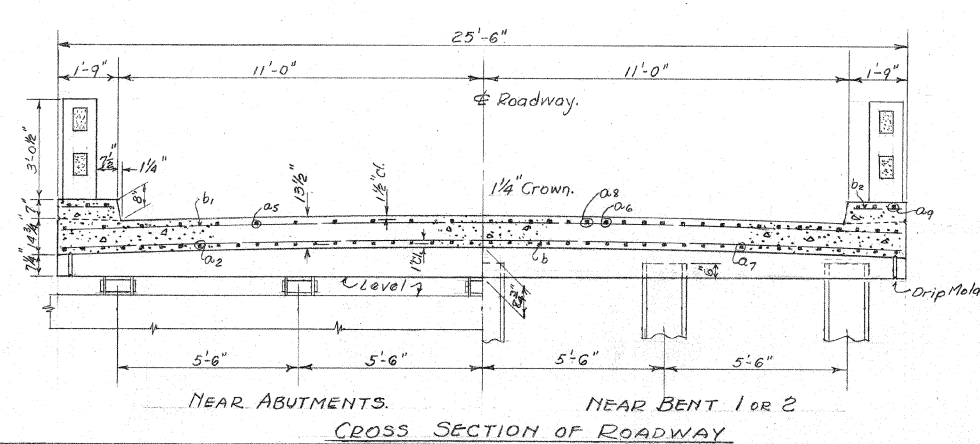
STATE AND ROUTE	SECTION	COUNTY	TOTAL SHEETS	SHEET NO.
			4 SHEETS	2



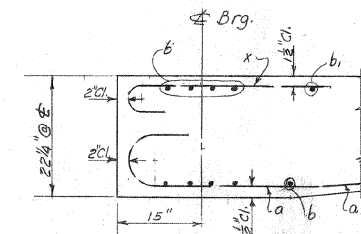
HALF LONGITUDINAL SECTION.



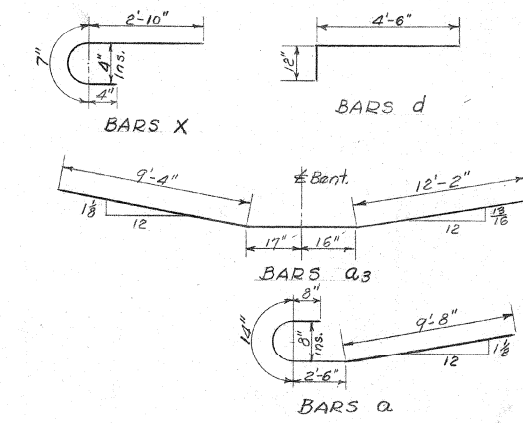
HALF PLAN.



CROSS SECTION OF ROADWAY.



SECTION THRU END OF SLAB.



NOTE: Cost of #9 wire used in rail posts shall be included in contract unit price for Handrail Concrete.

BILL OF MATERIAL-SUPERSTRUCTURE

Bar	No.	Size	Length
a	44	1"Ø	14'-0"
a1	44	1"Ø	9'-9"
a2	88	1"Ø	21'-3"
a3	44	7/8"Ø	24'-3"
a4	44	1"Ø	26'-9"
a5	44	1/2"Ø	27'-0"
a6	44	1 1/8"Ø	35'-0"
a7	44	1 1/8"Ø	14'-0"
a8	22	1/2"Ø	33'-0"
a9	24	1/2"Ø	29'-3"
b	153	7/8"Ø	25'-3"
b1	65	1/2"Ø	25'-3"
b2	56	1/2"Ø	1'-3"
x	44	1/2"Ø	3'-9"
d	128	1/2"Ø	5'-6"
e	128	1/2"Ø	7'-0"
e1	80	1/2"Ø	7'-6"
Cl. X Concrete		Cu. Yd.	150.1
Handrail Concrete		Cu. Yd.	6.6
Reinforcement Bars		Lbs	35070
*Structural Steel		Lbs	1470

\*Includes rollers & plates

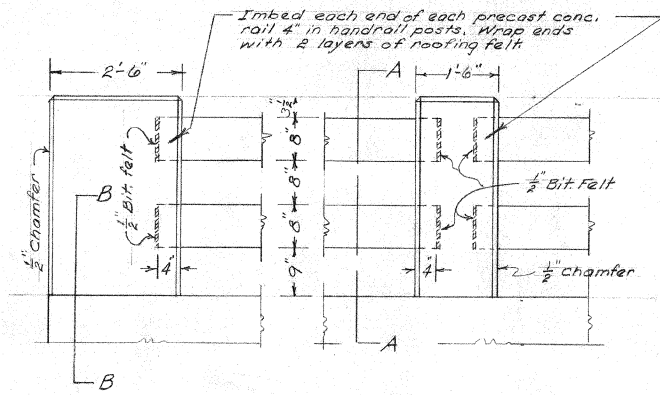
HICKORY WYTHE BRIDGE.  
S.A. RT. 6 SEC. 18 M.F.T.  
DOUGLAS CO.  
STA. 40 + 06.5

EXAMINED 1-17-1942  
PASSED  
DRAWN  
CHECKED  
APPROVED

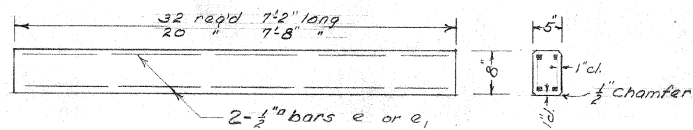
R.L. Smith  
R. Wagner  
R.L.S.  
R.W.

H. F. Smith  
H. E. Swann  
M. J. Fleming

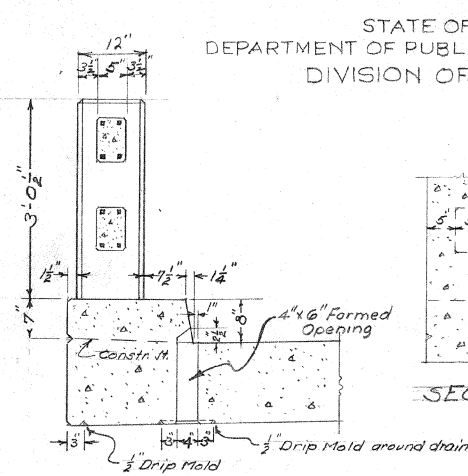
BRIDGE ENGINEER  
ENGINEER OF DESIGN  
CHIEF ENGINEER



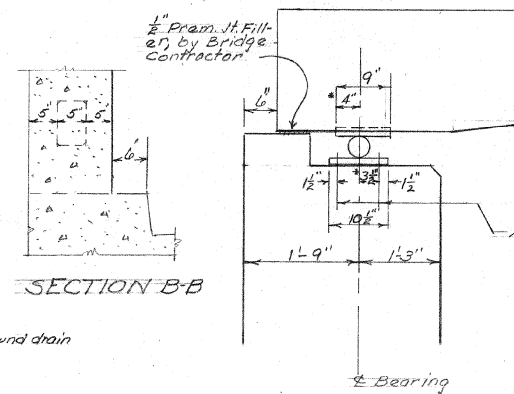
RAIL POST DETAILS



PRECAST CONCRETE RAIL



SECTION A-A  
Showing Floor Drains

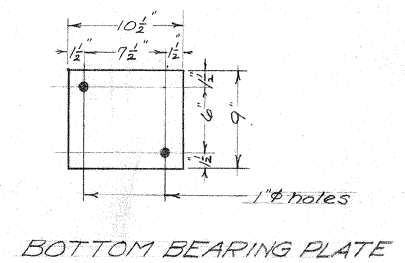


SECTION B-B

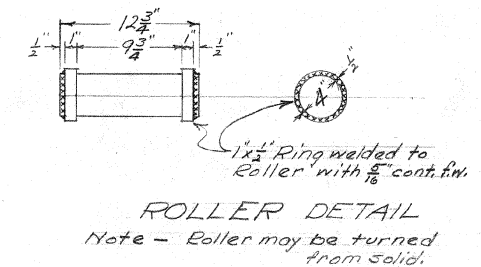
ABUTMENT BEARING

Note to Erector:  
\* Increase each dimension by the same amount if abutment has moved or if temp. is over 50°F. Decrease by same amount if temp. is below 50°F.

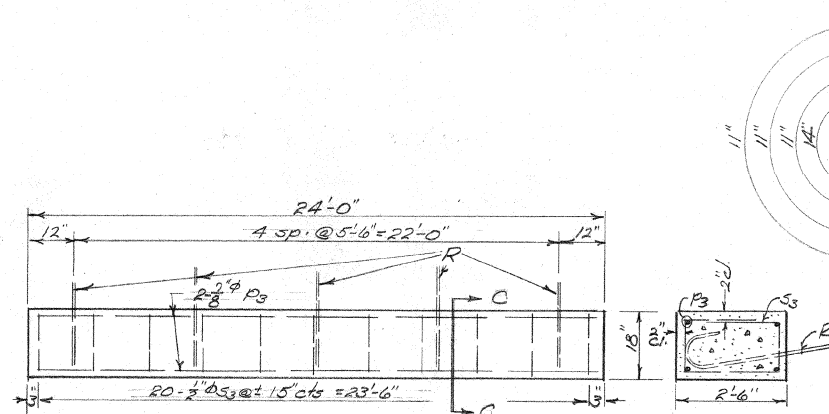
EACH BEARING  
12 Required  
Top plate 9\"/>



BOTTOM BEARING PLATE

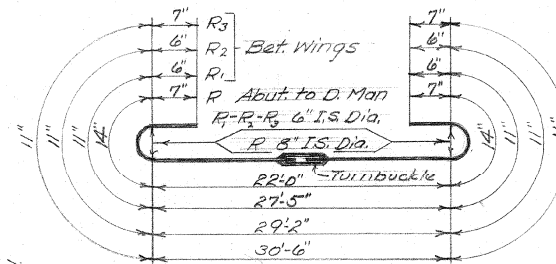


ROLLER DETAIL  
Note - Roller may be turned from solid.

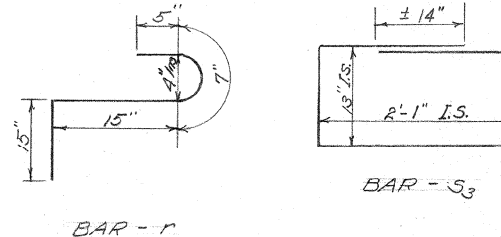


ELEV. CONCRETE DEAD MAN

For location see Sheet No. 1  
Included in C.I. X Conc. for Substr.

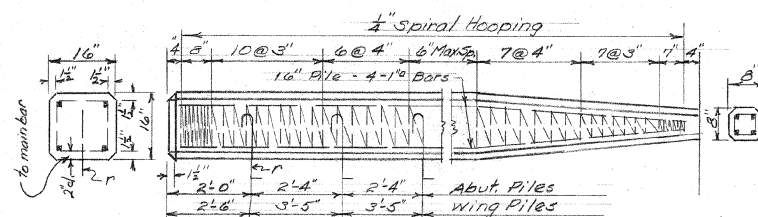


TIE RODS



BAR - r

BAR - S3

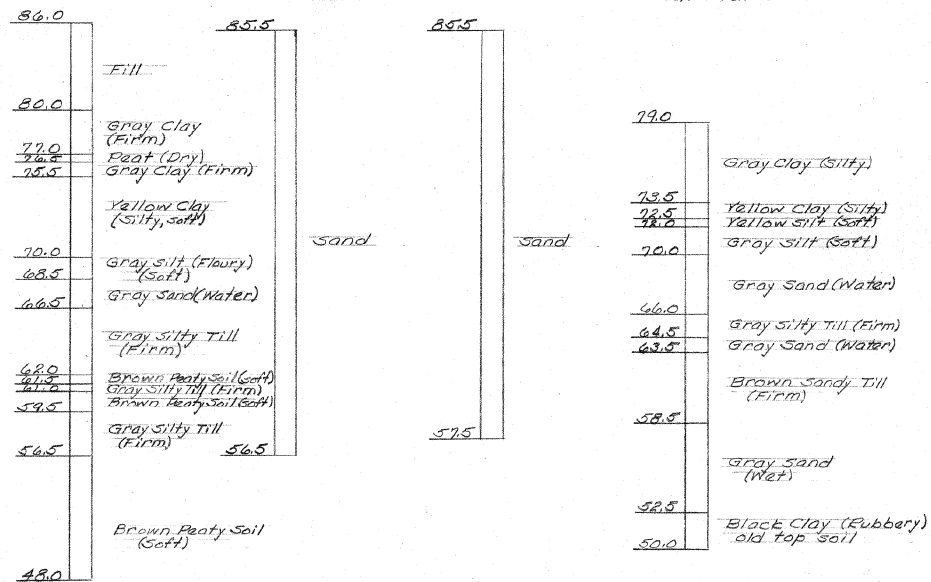


DETAIL OF PRECAST CONCRETE PILES

Note - Bars 'r' to be flush with face of pile when cast and bent out when back wall slab is poured.

Abuts. 20 Ten Piles Est. Length 40' - 10 Reqd.  
Wings 10 " " " " 30' - 12 "  
Bents 30 " " " " 48' - 10 "

12 Rt. Sta. 39+44      2 Sta. 39+81      9 Rt. Sta. 40+19      23 Lt. Sta. 40+56



BORING DATA

Note - Logs of Borings made at the site are shown on the drawings as a guide to bidders in estimating soil conditions which may be encountered in the work.

BILL OF MATERIAL - SUBSTR.

Bar	No.	Size	Length
h	20	1/2" sq	28'-0"
h1	16	"	14'-3"
h2	8	"	14'-9"
h3	28	"	9'-6"
d1	8	1/2" sq	4'-0"
d2	48	3/4" phi	5'-3"
e2	16	1/2" sq	13'-9"
r	66	1/2" sq	3'-6"
v	32	"	10'-9"
v1	20	"	13'-0"
v2	12	1/2" sq	7'-6"
s	52	1/2" phi	11'-0"
s1	56	"	9'-0"
s2	24	"	2'-6"
s3	40	1/2" phi	7'-6"
Class X Conc.			Cu. Yds. 51.2
Handrail Conc.			Cu. Yds. 1.5
Reinf. Bars			Lbs. 4580
Hardware			Lbs. 30
Rods			Lbs. 969
Test Piles			Ea. 3
Precast Conc. Piles (12@30') Lin. Ft.			360
" " " (10@48') Lin. Ft.			400
" " " (10@48') Lin. Ft.			480
Channel Excar. (Est.) Cu. Yds			10.75

HICKORY WYTHE BRIDGE  
S.A. RTE. 6 - SEC. 18 M.F.T.  
DOUGLAS COUNTY  
STA. 40+06.5

STANDARD	COMPUTED
	CHECKED
	DRAWN R. Wagner
	CHECKED H.S.
SPECIAL	ASSEMBLED
	CHECKED

EXAMINED 1-17-42  
H. F. B...  
PASSED H. E. Surman  
APPROVED M. J. Fleming



