

SUMMARY OF QUANTITIES			TOTAL QUANTITIES	CONSTRUCTION TYPE CODE				
CODE NO	ITEM	UNIT		0044 URBAN 100% STATE				
20100110	TREE REMOVAL ( 6 TO 15 UNITS DIAMETER)	UNIT	20	20				
20100210	TREE REMOVAL ( OVER 15 UNITS DIAMETER)	UNIT	8	8				
20101300	TREE PRUNING ( 1 TO 10 INCH DIAMETER)	EACH	4	4				
20101350	TREE PRUNING ( OVER 10 INCH DIAMETER)	EACH	4	4				
20700220	POROUS GRANULAR EMBANKMENT	CU YD	16	16				
21101625	TOPSOIL FURNISH AND PLACE, 6"	SQ YD	20	20				
25000312	SEEDING, CLASS 4A	ACRE	0.004	0.004				
25000210	SEEDING, CLASS 2A	ACRE	0.004	0.004				
25000400	NITROGEN FERTILIZER NUTRIENT	POUND	0.2	0.2				
25000500	PHOSPHORUS FERTILIZER NUTRIENT	POUND	0.2	0.2				
25000600	POTASSIUM FERTILIZER NUTRIENT	POUND	0.2	0.2				
25100630	EROSION CONTROL BLANKET	SQ YD	20	20				
25200200	SUPPLEMENTAL WATERING	UNIT	0.2	0.2				
50700105	TREATED TIMBER	F. B. M.	15930 <del>9997</del>	15930 <del>9997</del>				
50700305	HARDWARE	POUND	1391 <del>584</del>	1391 <del>584</del>				
51201300	FURNISHING STEEL PILES HP8X36	FOOT	2456 <del>2104</del>	2456 <del>2104</del>				
51202305	DRIVING PILES	FOOT	1065 <del>938</del>	1065 <del>938</del>				
67000400	ENGINEER'S FIELD OFFICE, TYPE A	CAL MO	6	6				
67100100	MOBILIZATION	L SUM	1	1				

SUMMARY OF QUANTITIES			TOTAL QUANTITIES	CONSTRUCTION TYPE CODE				
CODE NO	ITEM	UNIT		0044 URBAN 100% STATE				
X7011015	TRAFFIC CONTROL AND PROTECTION ( EXPRESSWAYS)	L SUM	1	1				
Z0030850	TEMPORARY INFORMATION SIGNING	SO FT	51.4	51.4				
Z0064800	SELECTIVE CLEARING	UNIT	7	7				

FILE NAME =	USER NAME = paragrind	DESIGNED -	REVISED -
pw:\plains\com\dtd\111\mof.gov\PM1001\Documents\VDOT	Offices\District\Projects\P103218\CADD\Drawings\103218-sh-	DRAWN -	REVISED -
	PLOT SCALE = 100,0000' / 1in	CHECKED -	REVISED -
	PLOT DATE = 4/27/2021	DATE -	REVISED -

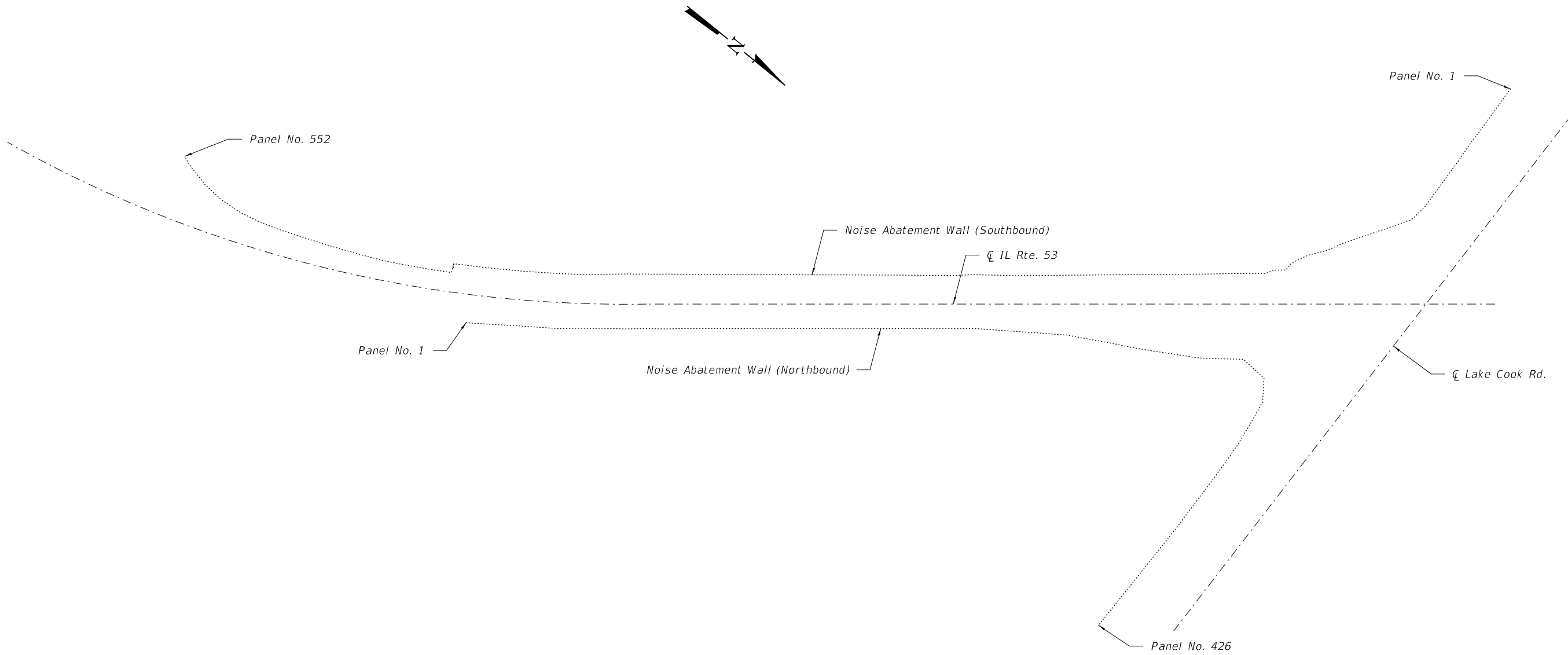
**STATE OF ILLINOIS  
DEPARTMENT OF TRANSPORTATION**

**IL-53 (IL-68 TO LAKE-COOK RD.)  
SUMMARY OF QUANTITIES**

SCALE: SHEET NO. OF SHEETS STA. TO STA.

F.A.P. RTE.	SECTION	COUNTY	TOTAL SHEETS	SHEET NO.
342	2020-260-1	COOK	11	3
FED. ROAD DIST. NO. 1 (ILLINOIS) FED. AID PROJECT			CONTRACT NO. 62N29	

△ REVISED SHEET 5/27/2021 REV-SEP



PLAN

GENERAL NOTES

All structural steel shall conform to AASHTO Classification M-270 Gr. 36, unless otherwise noted.  
All timber shall be treated.

SCOPE OF WORK

Remove deteriorated wooden posts and replace with HP piles (for locations see sheet 4 of 5).  
Remove and replace damaged or missing wooden plank panels (for locations see sheet 4 of 5).

TOTAL BILL OF MATERIAL

ITEM	UNIT	QUANTITY
Furnishing Steel Pile HP8x36	Foot	2456
Driving Piles	Foot	1065
Treated Timber	F.B.M.	15930
Hardware	Pound	1391



EXPIRES 11-30-2022

DESIGNED - Victor H. Veliz	EXAMINED - <i>Tim A. Dech</i> ENGINEER OF STRUCTURAL SERVICES	DATE - MAY 4, 2021
CHECKED - Adrian T. Hallaway	PASSED - <i>David Puze</i> ENGINEER OF BRIDGES AND STRUCTURES	REVISED $\Delta$ 05/26/2021 VHV
DRAWN - daburdell		REVISED -
CHECKED - VHV ATH		

**STATE OF ILLINOIS  
DEPARTMENT OF TRANSPORTATION**

**GENERAL DETAILS  
IL RTE 53 NOISE ABATEMENT WALL**

SHEET NO. 1 OF 5 SHEETS

F.A. RTE.	SECTION	COUNTY	TOTAL SHEETS	SHEET NO.
	2020-260-4	COOK	11	4
CONTRACT NO. 62N29				
ILLINOIS FED. AID PROJECT				

$\Delta$  REVISED SHEET 5/27/2021

**NOISE ABATEMENT WALL PANEL REPLACEMENT (NORTHBOUND)**

Panel No.	Height of Wall (ft)	Width of Pannel (ft)	Damaged Height (ft)	Wooden Batten, Furnish and Install (LF)	Wooden Plank, Furnish and Install (SQ.FT)	Additional Commnets
233	16.3	12	9.8	32.6	195.6	Top
315	23.4	12	23.4	46.8	280.8	
316	23.4	12	16.65	46.8	280.8	
321	24	12	full	48	288	
322	24	11.75	full	48	282	
331	22	12	full	44	264	
332	22	12	full	44	264	
353	12	20.7	5.75	24	248.4	Bottom
369	22.4	12	6.75	44.8	268.8	Bottom

**NOISE ABATEMENT WALL POST REPAIR (NORTHBOUND)**

LOCATION (Btw Wall Panels)	Wall Height (L) (ft)	* Pile Embedment (Le) (ft)	Pile Length (ft)	2 x12 Board Length (ft)	1/2" Carriage bolts (each)	
17	18	13.7	9.5	23.2	13.7	14
21	22	13.7	9.5	23.2	13.7	14
24	25	12.95	9.1	22.05	12.95	13
36	37	12.2	8.7	20.9	12.2	12
122	123	16.2	10	26.2	16.2	16
233	234	16.3	10	26.3	16.3	16
251	252	16.3	10	26.3	16.3	16
258	259	15.95	10	25.95	15.95	16
315	316	23.4	15	38.4	23.4	23
321	322	24	15	39	24	24
331	332	21.95	15	36.95	21.95	22

(2 HP8x36 piles at each location)

**NOISE ABATEMENT WALL PANEL REPLACEMENT (SOUTHBOUND)**

Panel No.	Height of Wall (ft)	Width of Pannel (ft)	Damaged Height (ft)	Wooden Batten, Furnish and Install (LF)	Wooden Plank, Furnish and Install (SQ.FT)	Additional Commnets
44	16.3	12	full	65.2	189.6	
45	16.8	12	full	67.2	195.6	
46	17.3	12	full	69.2	201.6	
47	18	11.5	full	72	201.3	
48	18	11.5	full	72	201.3	
129	12.7	12	full	50.8	146.4	
130	11.9	12	full	47.6	136.8	
131	11.6	12	full	46.4	133.2	
132	11.3	12	full	45.2	129.6	
133	11.1	3.5	full	44.4	37.1	
138	12	11.5	full	48	132.3	
139	12	11.5	full	48	132.3	
149	12.5	11.5	full	50	138.0	
150	12.5	11.5	full	50	138.0	
176	14.6	12	full	58.4	169.2	
186	16	12	full	64	186.0	
187	16	12	full	64	186.0	
188	16	12	full	64	186.0	
189	16.1	12	full	64.4	187.2	
209	15.4	12	full	61.6	178.8	Top Pannel
300	16.2	12	full	64.8	188.4	Top Pannel
359	23	12	full	92	270.0	
360	23.2	12	full	92.8	272.4	
364	20.5	21	full	82	420.0	
365	20.5	21	full	82	420.0	
366	23.7	12	full	94.8	278.4	
367	23.6	12.75	full	94.4	294.5	
368	23.5	12	full	94	276.0	
371	23.7	12	full	94.8	278.4	
372	24	12	full	96	282.0	
432	23.5	12	full	94	276.0	
433	23.5	12	full	94	276.0	
434	23.5	12	full	94	276.0	

**NOISE ABATEMENT WALL POST REPAIR (SOUTHBOUND)**

LOCATION (Btw Wall Panels)	Wall Height (L) (ft)	* Pile Embedment (Le) (ft)	Pile Length (ft)	2 x12 Board Length (ft)	1/2" Carriage bolts (each)	
25	26	16	10	26	16	16
27	28	16	10	26	16	16
40	41	16.1	10	26.1	16.1	16
44	45	16.8	10.3	27.1	16.8	17
45	46	17.3	10.3	27.3	17.3	17
47	48	18	10.7	28.7	18	18
129	130	11.9	8.7	20.6	11.9	12
130	131	11.6	8.7	20.3	11.6	12
131	132	11.3	8.7	20	11.3	11
132	133	11.1	8.7	19.8	11.1	11
137	138	11.3	8.7	20	11.3	11
138	139	12	8.7	20.7	12	12
142	143	11.6	8.7	20.3	11.6	12
149	150	13	9.1	22.1	13	13
161	162	12.7	9	21.7	12.7	13
162	163	12.9	9	21.9	12.9	13
164	165	13.5	9.3	22.8	13.5	14
167	168	13.7	9.5	23.2	13.7	14
175	176	14.6	9.8	24.4	14.6	15
186	187	16	10	26	16	16
187	188	16	10	26	16	16
188	189	16.1	10	26.1	16.1	16
208	209	15.4	10	25.4	15.4	15
299	300	16.2	10	26.2	16.2	16
307	308	19	10.7	29.7	19	19
359	360	19.5	11	30.5	19.5	20
364	365	21	11.5	32.5	21	21
366	367	20	11	31	20	20
367	368	19.9	11	30.9	19.9	20
371	372	20.3	11	31.3	20.3	20
432	433	24	12	36	24	24
433	434	24	12	36	24	24

(2 HP8x36 piles at each location)

\* Pile embedment is based on a 12 foot wall panel length.

**Notes:**

- Wooden Batten sections are 1 1/2" x 3" treated timber sections.
- Wooden Plank panel sections are 1 1/2" thick, tongue and groove, treated timber.
- Cost of furnishing and installation of wooden panels and battens is included in the cost FBM (foot board measure) for Treated Timber.
- Cost of removal and disposal of all timber and hardware material is included in the cost of Treated Timber.
- Wall panel numbers are stamped on face of panel on residential side.

**BILL OF MATERIAL - NORTHBOUND**

Item	Unit	Total
Furnishing Steel Pile HP8x36	Foot	617
Driving Piles	Foot	244
Treated Timber	F.B.M.	4030
Hardware	Pound	187

**BILL OF MATERIAL - SOUTHBOUND**

Item	Unit	Total
Furnishing Steel Pile HP8x36	Foot	1840
Driving Piles	Foot	822
Treated Timber	F.B.M.	11900
Hardware	Pound	510

REVISED SHEET 5/27/2021