

F.A.S.	SECTION	COUNTY	TOTAL SHEETS	SHEET NO.
813	06-00058-00-FP	EDWARDS	29	1
FED. ROAD DIST. NO.		ILLINOIS	BONE GAP ROAD	

INDEX OF SHEETS

06-11-2021 LETTING ITEM 252

- | SHEET NO. | DESCRIPTION |
|-----------|--|
| 1. | COVER SHEET |
| 2. | TYPICAL SECTIONS, SUMMARY OF QUANTITIES, AND GENERAL NOTES |
| 3-4. | MISCELLANEOUS DETAILS AND SCHEDULES |
| 5-6. | EROSION CONTROL PLAN |
| 7-12. | PLAN AND PROFILE SHEETS |
| 13-27. | CROSS-SECTION SHEETS |
| 28-29. | STRUCTURE CROSS SECTIONS AND DETAILS |

HIGHWAY STANDARDS: SEE SHEET #2

STATE OF ILLINOIS
DEPARTMENT OF TRANSPORTATION
DIVISION OF HIGHWAYS
PLANS FOR PROPOSED
FEDERAL-AID S.T.P. PROJECT

EDWARDS COUNTY
FAS 813 (CH 1)
SECTION: 06-00058-00-FP
PROJECT: NUCQ(765)
JOB NO.: C-97-100-20



UTILITIES

AMEREN CIPS
 4978 NORTH IL 130; OLNEY, IL 62460
 PHONE: (618)-393-5641

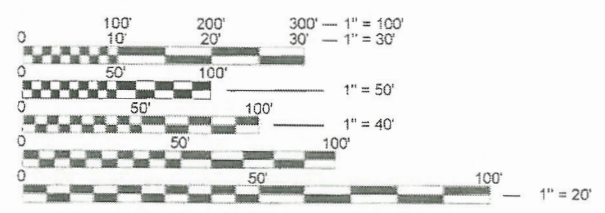
WABASH TELEPHONE CO-OPERATIVE
 P.O. BOX 719; 113 HAGEN DRIVE; FLORA, IL 62839
 PHONE: (618)-665-3311

VILLAGE OF BONE GAP
 313 SOUTH STATE STREET; BONE GAP, IL 62815
 (618)-446-3314

CITY OF ALBION
 27 WEST ELM STREET; ALBION, IL 62808
 (618)-445-3214

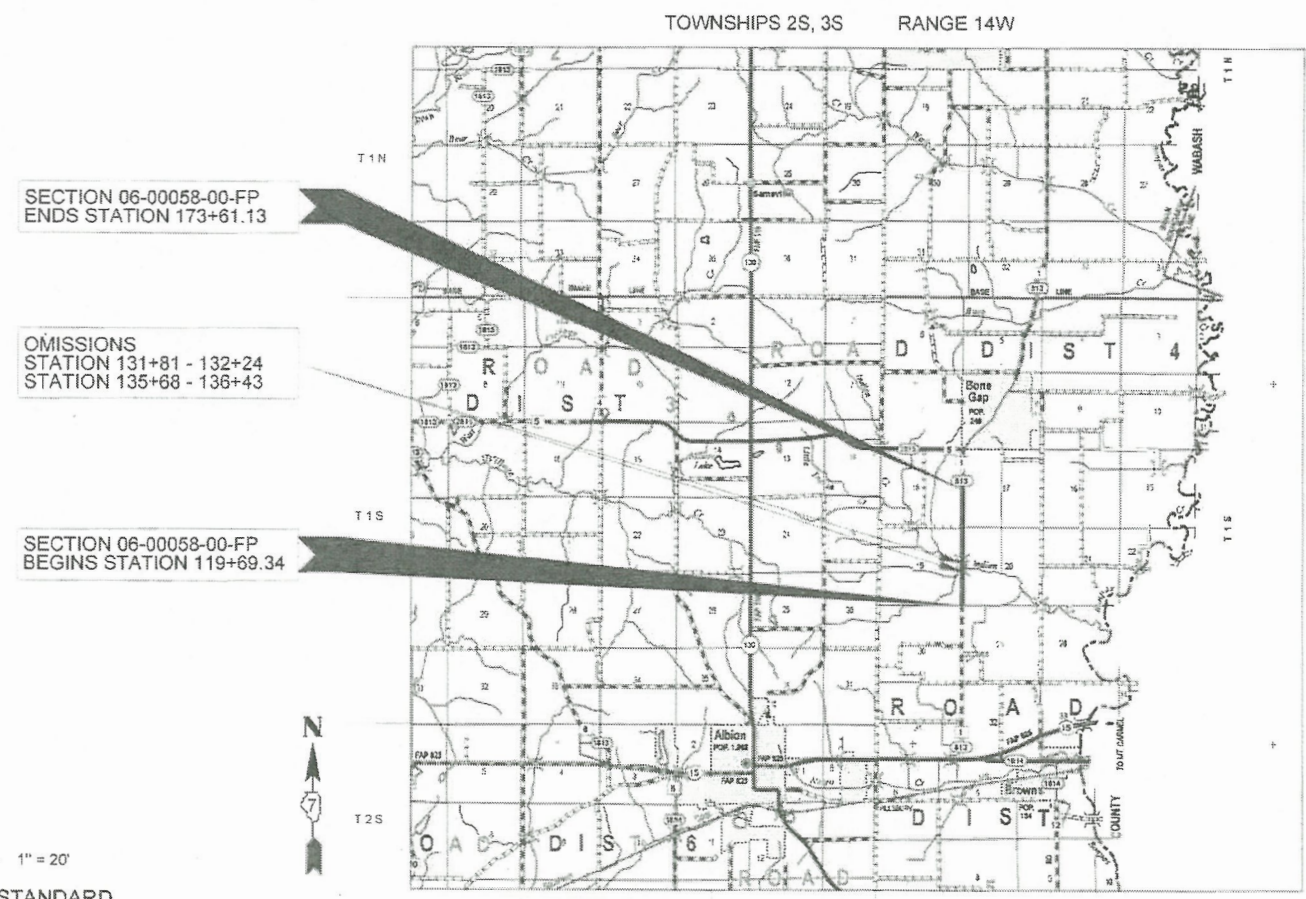


Know what's below.
Call before you dig.



FULL SIZE PLANS HAVE BEEN PREPARED USING STANDARD ENGINEERING SCALES. REDUCED SIZED PLANS WILL NOT CONFORM TO STANDARD SCALES. IN MAKING MEASUREMENTS ON REDUCED PLANS, THE ABOVE SCALES MAY BE USED.

CONTRACT NO.: 95641
 DESIGN CLASS - MAJOR COLLECTOR
 CURRENT A.D.T. = 650 DESIGN
 SPEED = 50 MPH



LOCATION MAP

APPROXIMATE SCALE: 0 2 4 MILE

GROSS LENGTH = 5,391.79 FEET (1.02 MILES)
 OMISSIONS = 118.07 FEET (0.02 MILES)
 NET LENGTH = 5,273.72 FEET (1.00 MILES)

SECTIONS 4, 9, 28, 33

APPROVED: April 21 2021

 COUNTY ENGINEER

PASSED: April 27 2021

 DISTRICT SEVEN ENGINEER OF LOCAL ROADS & STREETS

RELEASING FOR BID BASED ON LIMITED REVIEW: April 27 2021

 REGION FOUR ENGINEER

STATE OF ILLINOIS
 DEPARTMENT OF TRANSPORTATION

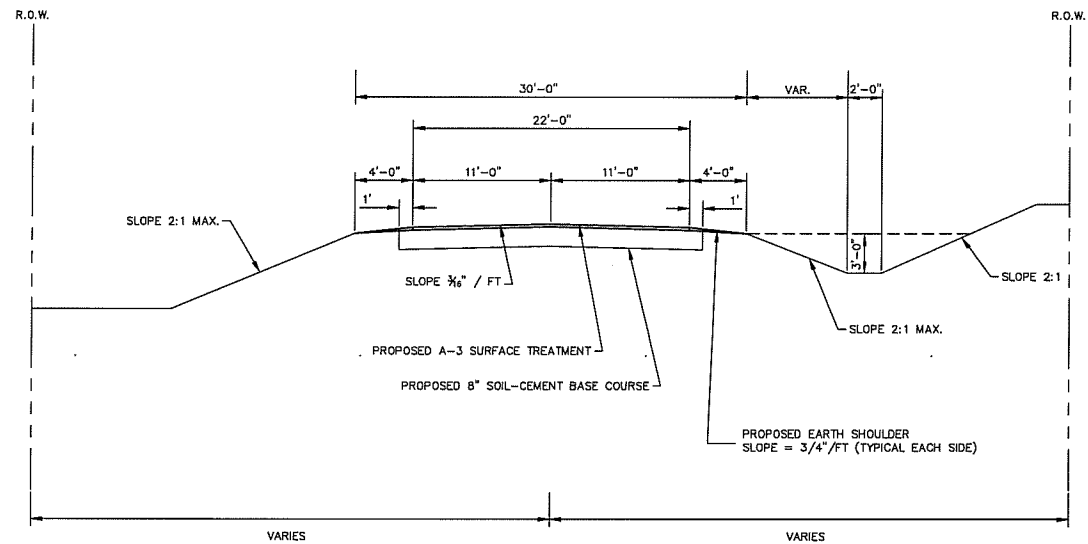


HAMPTON, LENZINI AND RENWICK, INC.
 323 WEST THIRD STREET, P.O. BOX 160
 MT. CARMEL, ILLINOIS 62883
 ILLINOIS PROFESSIONAL DESIGN FIRM
 LS / PE / SE CORP. 184.000959

DATE	
BY	
REVIEWED	
PLotted	
CHECKED	
REVISIONS NOTED	
STRUCTURE NOTATIONS CHECKED	
NO.	

DATE	
BY	
REVIEWED	
PLotted	
CHECKED	
REVISIONS NOTED	
STRUCTURE NOTATIONS CHECKED	
NO.	

**TYPICAL CROSS SECTION
PROPOSED**
(STA 119+69 TO STA 173+61)



GENERAL NOTES:

ALL ELEVATIONS ARE BASED ON UNITED STATES GEOLOGICAL SURVEY (USGS) MEAN SEA LEVEL DATUM.

THE CONTRACTOR SHALL BE RESPONSIBLE FOR ALL FEES, PERMITS, LICENSES, COSTS AND PAYMENTS TO GOVERNMENTAL AUTHORITIES FOR THE ISSUANCE OF PERMITS.

THE QUANTITY SHOWN IN THE SUMMARY OF QUANTITIES FOR PROCESSING SOIL-CEMENT BASE COURSE 8" ALLOWS 621 SQ YDS FOR SIDE ROADS AND 14,063 SQ YDS FOR MAIN LINE.

MAXIMUM PERCENT OF GRADE	+2.15 %
MINIMUM STOPPING SIGHT DISTANCE	446 FT
DESIGN SPEED	50 MPH
CURRENT ADT	700 VPD
DESIGN ADT (20 YEAR)	750 VPD

THE FOLLOWING RATES HAVE BEEN USED TO CALCULATE PLAN QUANTITIES:

BITUMINOUS MATERIALS (PRIME COAT)	0.30 GAL / SQ YD
BITUMINOUS MATERIALS (COVER COAT)	0.50 GAL / SQ YD
BITUMINOUS MATERIALS (SEAL COAT)	0.50 GAL / SQ YD
COVER COAT AGGREGATE	25 LBS / SQ YD
SEAL COAT AGGREGATE	25 LBS / SQ YD
STONE DUMPED RIPRAP, CLASS A4	1.75 TONS / CU YD
AGGREGATE SURFACE COURSE, TYP B	2.05 TONS / CU YD
CEMENT CONTENT AT 9% BY VOLUME	6.75 LBS / SQ YD-IN OF COMPACTED THICKNESS

UTILITIES:

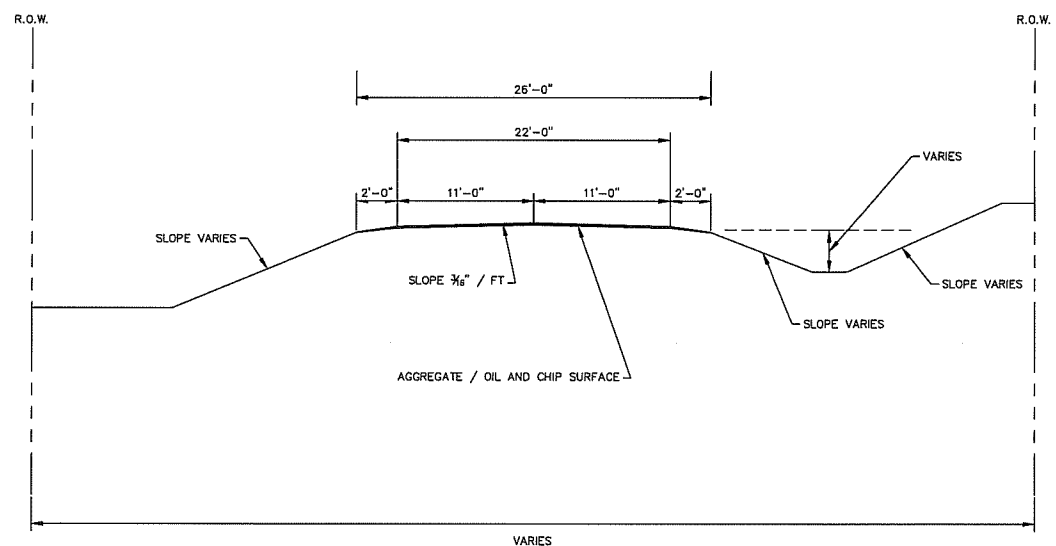
J.U.L.I.E.	800-892-0123
AMEREN CIPS	618-393-5641
WABASH COMMUNICATIONS CO-OP	618-665-3311
VILLAGE OF BONE GAP	618-446-3314
CITY OF ALBION	618-445-3214

SUMMARY OF QUANTITIES

CODE NUMBER	ITEM	QUANTITY	UNIT
20200100	EARTH EXCAVATION	4,430.00	CU YD
20400800	FURNISHED EXCAVATION	4,514.00	CU YD
20900110	POROUS GRANULAR BACKFILL	96.00	CU YD
28000305*	TEMPORARY DITCH CHECKS	525.00	FOOT
28100807*	STONE DUMPED RIPRAP, CLASS A4	598.00	TON
35200300*	PROCESSING SOIL-CEMENT BASE COURSE 8"	14,684.00	SQ YD
35200500*	CEMENT	7,929.00	100 WT
40200800*	AGGREGATE SURFACE COURSE, TYPE B	299.00	TON
40300200	BITUMINOUS MATERIALS (PRIME COAT)	19.00	TON
40300400	BITUMINOUS MATERIALS (COVER AND SEAL COATS)	94.00	TON
40300500	COVER COAT AGGREGATE	367.00	TON
40300600	SEAL COAT AGGREGATE	184.00	TON
50800105*	REINFORCEMENT BARS	2,400.00	POUND
54003000*	CONCRETE BOX CULVERTS	30.80	CU YD
54010905*	PRECAST CONCRETE BOX CULVERTS 9' X 5'	88.00	FOOT
542A5479*	PIPE CULVERTS, CLASS A, TYPE 1 EQUIVALENT ROUND-SIZE 24"	51.00	FOOT
542D0235*	PIPE CULVERTS, CLASS D, TYPE 1 30"	133.00	FOOT
542D5485*	PIPE CULVERTS, CLASS D, TYPE 1 EQUIVALENT ROUND-SIZE 30"	53.00	FOOT
542D5491*	PIPE CULVERTS, CLASS D, TYPE 1 EQUIVALENT ROUND-SIZE 36"	98.00	FOOT
54214509	PRECAST REINFORCED CONCRETE FLARED END SECTIONS, EQUIVALENT ROUND-SIZE 24"	2.00	EACH
59300100	CONTROLLED LOW-STRENGTH MATERIAL	13.00	CU YD
67100100	MOBILIZATION	1.00	L SUM
Δ X2501000*	SEEDING, CLASS 2 (SPECIAL)	7.40	ACRE
XX004633*	FIELD TILE ADJUSTMENT	3.00	EACH
70068900*	STONE LINED DITCH	67.00	TON

Δ SPECIALTY ITEMS

**TYPICAL CROSS SECTION
EXISTING**
(STA 119+69 TO STA 173+61)



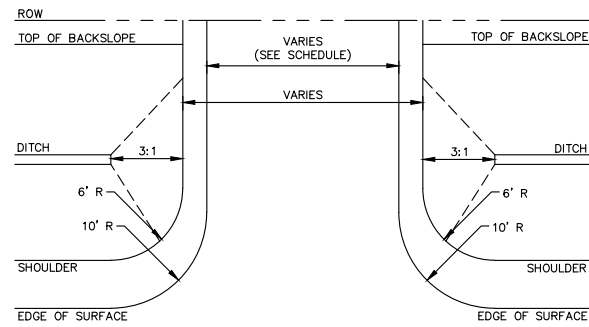
HIGHWAY STANDARDS

000001-08	STANDARD SYMBOLS, ABBREVIATIONS AND PATTERNS
280001-07	TEMPORARY EROSION CONTROL SYSTEMS
542306-03	PRECAST REINFORCED CONCRETE ELLIPTICAL FLARED END SECTION
701006-05	OFF-ROAD OPERATIONS, TWO-LANE, TWO-WAY, 15' TO 24' FROM PAVEMENT EDGE
701901-08	TRAFFIC CONTROL DEVICES
BLR 21-9	TYPICAL APPLICATION OF TRAFFIC CONTROL DEVICES FOR CONSTRUCTION ON RURAL LOCAL HIGHWAYS
BLR 22-7	TYPICAL APPLICATION OF TRAFFIC CONTROL DEVICES FOR CONSTRUCTION ON RURAL LOCAL HIGHWAYS (TWO-LANE TWO-WAY RURAL TRAFFIC) (ROAD CLOSED TO THROUGH TRAFFIC)

DATE	
BY	
DESIGNED	
DRAWN	
CHECKED	
IN CHARGE	
NOTED	
NO.	

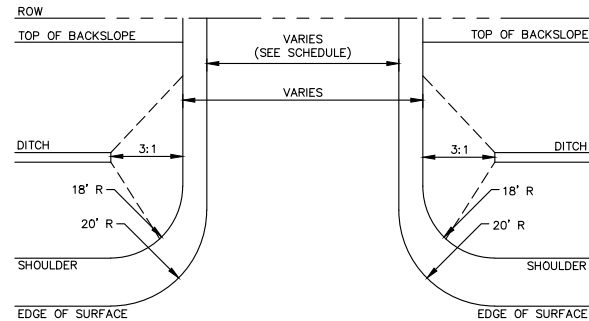
DATE	
BY	
DESIGNED	
DRAWN	
CHECKED	
IN CHARGE	
NOTED	
NO.	

DETAIL OF PRIVATE AND FIELD ENTRANCES



⊕

DETAIL OF SIDE ROADS



⊕

SCHEDULE OF SIDE ROADS, FIELD & PRIVATE ENTRANCES

STATION	LOCATION	TYPE	WIDTH (FT)	AREA (SQ YD)	AGG SURFACE (TON)
120+00	RT	FE	40.0	89.11	30.45
120+00	LT	FE	40.0	89.33	30.52
126+80	LT	FE	16.0	56.67	19.36
133+38	LT	FE	16.0	74.34	25.40
135+14	LT	FE	40.0	178.89	61.12
160+69	LT	SR	24.0	125.78	42.97
160+70	RT	FE	40.0	182.67	62.41
163+30	RT	PE	16.0	75.89	25.93

TOTAL (TONS): 298.16

NOTE: QUANTITY SHOWN FOR AGGREGATE SURFACE, TYPE B IS TO BE INSTALLED TO A DEPTH OF 6" AT EACH ENTRANCE LOCATION.

SCHEDULE OF FIELD TILES TO BE ADJUSTED

STATION	LOCATION	QUANTITY (EACH)
161+26	RT	1.0
163+80	RT	1.0
164+41	RT	1.0
TOTAL (EACH):		3.0

SCHEDULE OF TEMPORARY DITCH CHECKS

STATION	LOCATION	LENGTH (FT)	STATION	LOCATION	LENGTH (FT)
119+50	LT	7.0	119+50	RT	7.0
121+00	LT	7.0	121+00	RT	7.0
122+25	LT	7.0	122+25	RT	7.0
123+50	LT	7.0	123+50	RT	7.0
124+75	LT	7.0	124+75	RT	7.0
126+00	LT	7.0	126+00	RT	7.0
127+25	LT	7.0	127+25	RT	7.0
128+50	LT	7.0	128+50	RT	7.0
129+75	LT	7.0	129+75	RT	7.0
139+00	LT	7.0	139+00	RT	7.0
140+25	LT	7.0	140+25	RT	7.0
141+50	LT	7.0	141+50	RT	7.0
142+75	LT	7.0	142+75	RT	7.0
144+00	LT	7.0	144+00	RT	7.0
145+25	LT	7.0	145+25	RT	7.0
146+50	LT	7.0	146+50	RT	7.0
147+75	LT	7.0	147+75	RT	7.0
149+00	LT	7.0	149+00	RT	7.0
150+25	LT	7.0	150+25	RT	7.0
151+50	LT	7.0	151+50	RT	7.0
152+75	LT	7.0	152+75	RT	7.0
154+00	LT	7.0	154+00	RT	7.0
155+25	LT	7.0	155+25	RT	7.0
156+50	LT	7.0	156+50	RT	7.0
157+75	LT	7.0	157+75	RT	7.0
159+00	LT	7.0	159+00	RT	7.0
160+25	LT	7.0	160+25	RT	7.0
161+50	LT	7.0	161+50	RT	7.0
162+75	LT	7.0	162+75	RT	7.0
164+00	LT	7.0	164+00	RT	7.0
165+25	LT	7.0	165+25	RT	7.0
166+50	LT	7.0	166+50	RT	7.0
167+75	LT	7.0	167+75	RT	7.0
169+00	LT	7.0	169+00	RT	7.0
170+25	LT	7.0	170+25	RT	7.0
171+50	LT	7.0	171+50	RT	7.0
172+75	LT	7.0	172+75	RT	7.0
174+00	LT	7.0	174+00	RT	7.0

TOTAL (FOOT): 525.0

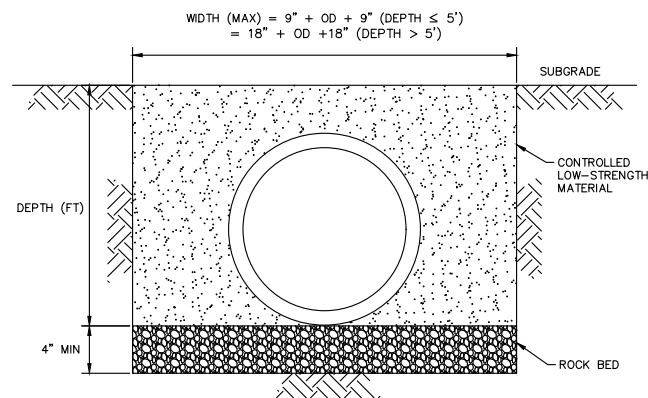
EARTHWORK SCHEDULE

LOCATION			EARTH EXCAVATION	CHANNEL EXCAVATION	ESTIMATED UNSUITABLE MATERIAL	SUITABLE MATERIAL ADJUSTED FOR SHRINKAGE	EMBANKMENT	EARTHWORK BALANCE WASTE (+) OR SHORTAGE (-)
STA	TO	STA	CUBIC YARD	CUBIC YARD	CUBIC YARD	CUBIC YARD	CUBIC YARD	CUBIC YARD
119+69		132+00	1534.37			1150.78	3128.81	-1978.00
132+00		136+00	17.29			12.97	39.76	-26.79
136+00		173+61	2878.28			2158.71	4667.46	-2508.75
TOTAL			4429.94			3322.46	7836.03	-4513.57

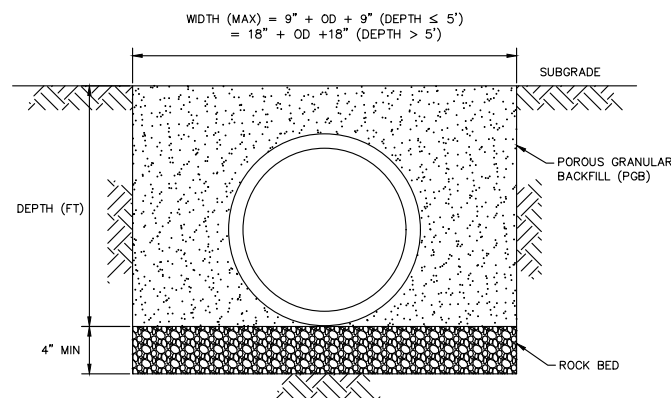
DATE	
BY	
DESIGNED	
DRAWN	
CHECKED	
IN CHARGE	
NOTED	
NO.	

DATE	
BY	
DESIGNED	
DRAWN	
CHECKED	
IN CHARGE	
NOTED	
NO.	

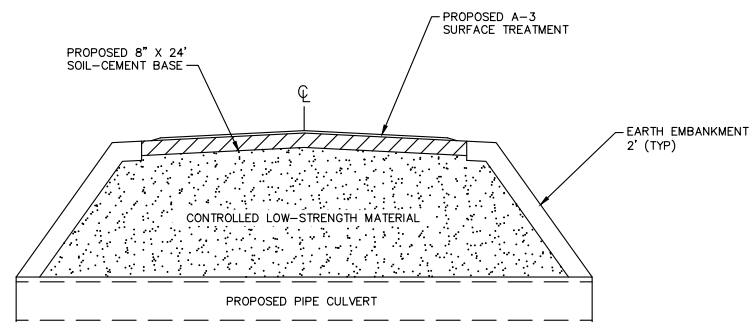
DETAIL OF CROSS-ROAD CULVERT



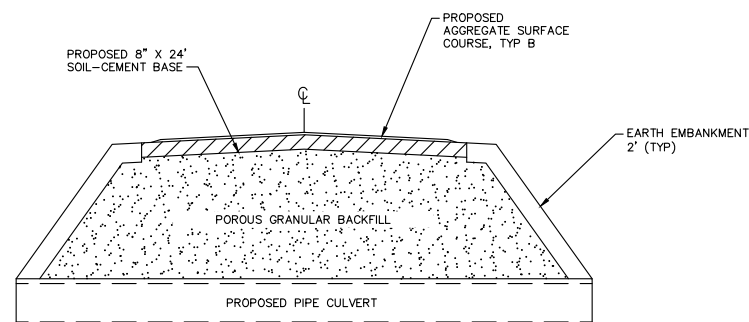
DETAIL OF CROSS ROAD CULVERT



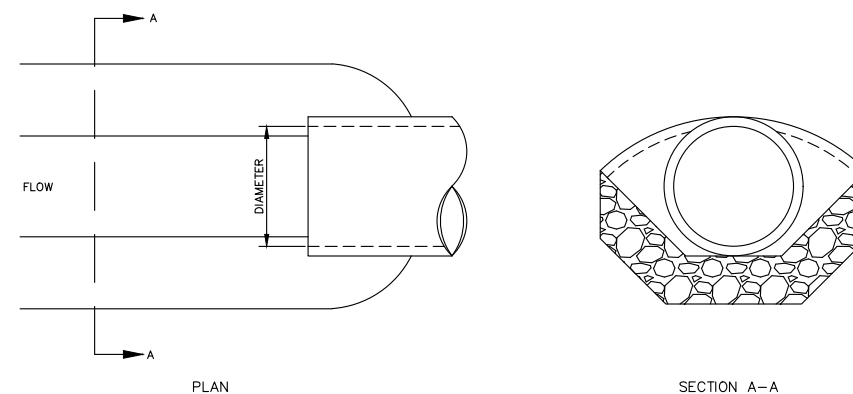
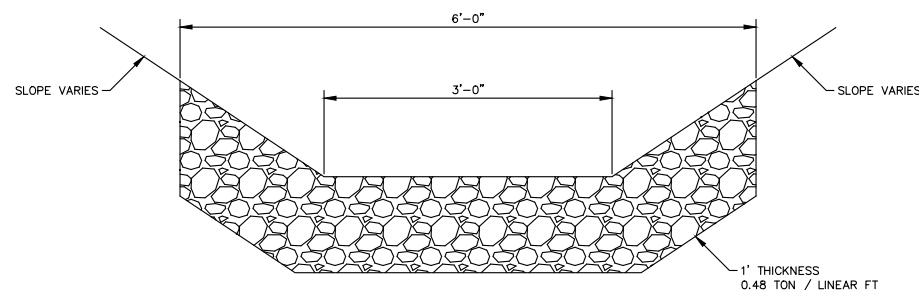
PROPOSED TYPICAL CROSS SECTION AT CROSS-ROAD PIPE CULVERTS



PROPOSED TYPICAL CROSS SECTION AT PRIVATE AND FIELD ENTRANCES



DETAIL OF STONE-LINED DITCH



NOTE: FOR PLACEMENT, QUALITY GRADATION AND OTHER MISCELLANEOUS REQUIREMENTS FOR STONE-LINED DITCH, SEE SPECIAL PROVISIONS.

SCHEDULE OF PIPE CULVERTS FOR ENTRANCES

STATION TO	STATION	LOCATION	TYPE	LENGTH (FT)	CLSM (CU YD)	PGB (CU YD)
119+70	120+23	19.8' RT	30" EQRS, CL D, TYP 1	53.0	-	12.7
119+70	120+23	20.0' LT	36" EQRS, CL D, TYP 1	53.0	-	14.4
126+55	127+00	26.7' LT	36" EQRS, CL D, TYP 1	45.0	-	31.0
133+20	133+57	24.6' LT	30" CL D, TYP 1	37.0	-	10.3
160+46	160+95	21.2' RT	30" CL D, TYP 1	49.0	-	12.4
160+50	161+01	21.2' LT	24" EQRS, CL A, TYP 1	51.0	12.6	-
163+01	163+48	21.5' RT	30" CL D, TYP 1	47.0	-	15.1
				TOTAL (CU YD) =	12.6	95.8

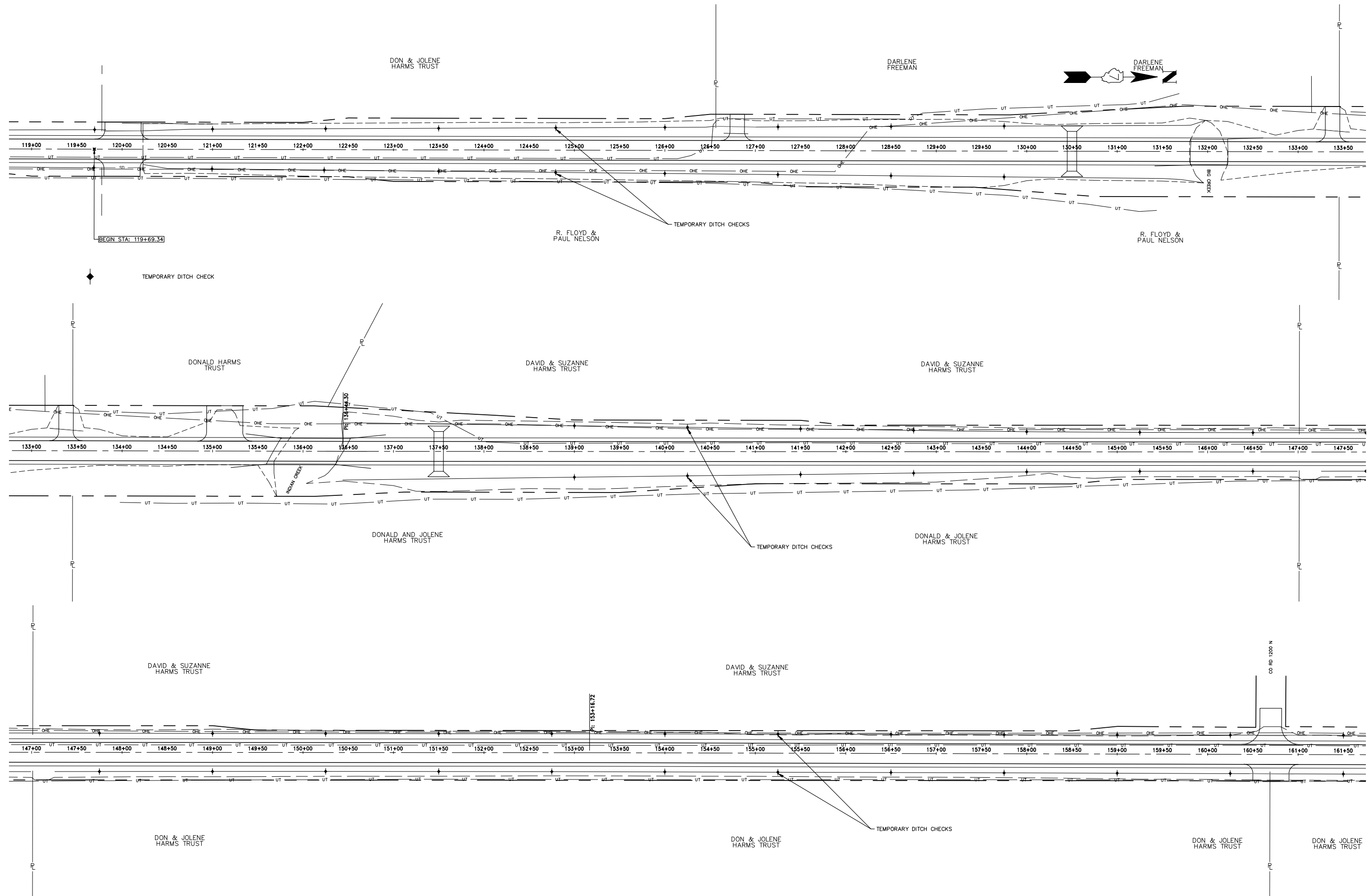
NOTE: COST FOR MATERIALS AND LABOR TO INSTALL ROCK BED SHALL BE INCLUDED IN COST OF CONTROLLED LOW-STRENGTH MATERIAL AND POROUS GRANULAR BACKFILL FOR RESPECTIVE CULVERTS.

SCHEDULE OF STONE-LINED DITCHES

STATION TO	STATION	LOCATION	LENGTH (FT)	TONS
120+20	120+30	LT	10.0	4.8
126+53	126+63	LT	10.0	4.8
126+97	127+07	LT	10.0	4.8
146+79	146+89	RT	10.0	4.8
147+29	147+39	RT	10.0	4.8
160+40	160+50	LT	10.0	4.8
160+85	160+95	LT	10.0	4.8
163+00	163+10	RT	10.0	4.8
163+48	163+58	RT	10.0	4.8
166+50	166+75	RT	25.0	12.0
169+75	170+00	LT	25.0	12.0
TOTAL (TONS):				67.2

DATE	
BY	
REVISIONS	
GRADES CHECKED	
BENCH MARKS NOTED	
CONSTRUCTION CHECKED	
NO.	

DATE	
BY	
REVISIONS	
GRADES CHECKED	
BENCH MARKS NOTED	
CONSTRUCTION CHECKED	
NO.	



HAMPTON, LENZINI AND RENWICK, INC.
 323 WEST THIRD STREET, P.O. BOX 160
 MT. CARMEL, ILLINOIS 62863
 ILLINOIS PROFESSIONAL DESIGN FIRM
 LS / PE / SE CORP. 184.000959

PROJECT NO. - 20.0068.330
 FILE NAME - 200068.dwg
 PLOT SCALE - 1" = 10'
 PLOT DATE - 04/20/2021

DESIGNED - SEK
 DRAWN - SEK
 CHECKED - PJG
 DATE - 04/02/2021

REVISED -
 REVISED -
 REVISED -
 REVISED -

**STATE OF ILLINOIS
 DEPARTMENT OF TRANSPORTATION**

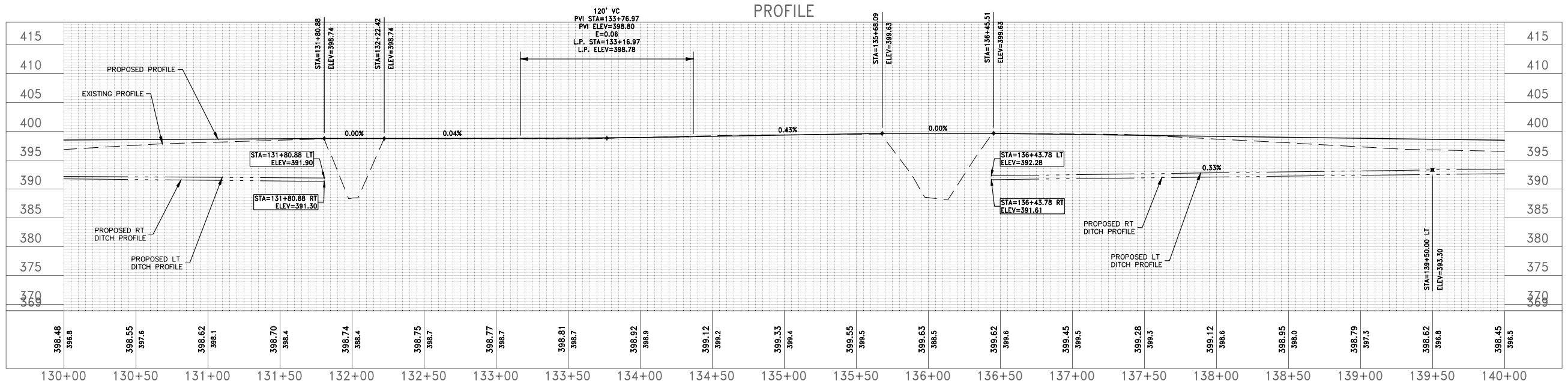
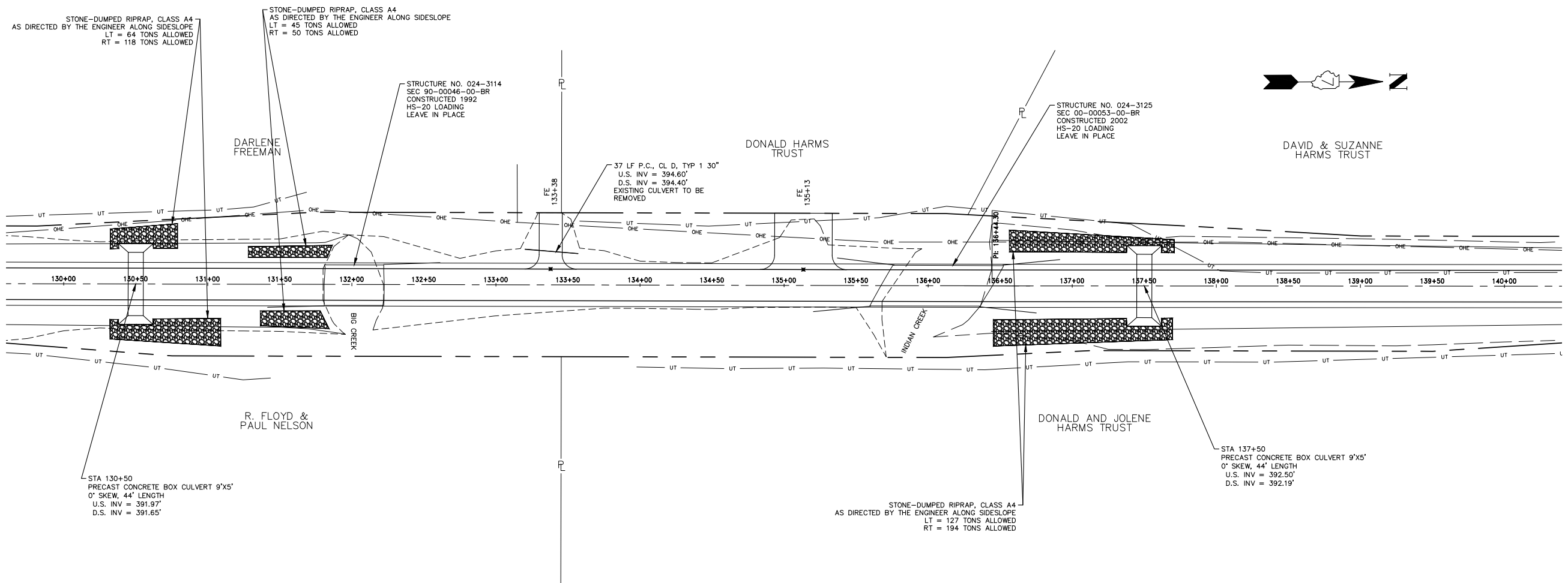
EROSION CONTROL PLAN

SCALE: 1" = 50' SHEET 5 OF 29 SHEETS STA. 119+00 TO STA. 161+50

F.A.S.	SECTION	COUNTY	TOTAL SHEETS	SHEET NO.
813	06-00058-00-FP	EDWARDS	29	5
CONTRACT NO.: 95641				
ILLINOIS FEDERAL AID PROJECT:				

DATE	
BY	
DESIGNED	
DRAWN	
CHECKED	
IN CHARGE	
NOTED	
NO.	

DATE	
BY	
DESIGNED	
DRAWN	
CHECKED	
IN CHARGE	
NOTED	
NO.	



HAMPTON, LENZINI AND RENWICK, INC.
 323 WEST THIRD STREET, P.O. BOX 160
 MT. CARMEL, ILLINOIS 62863
 ILLINOIS PROFESSIONAL DESIGN FIRM
 LS / PE / SE CORP. 184.000959

PROJECT NO. - 20.0068.330
 FILE NAME - 200068.dwg
 PLOT SCALE - 1" = 40'
 PLOT DATE - 04/20/2021

DESIGNED - SEK
 DRAWN - SEK
 CHECKED - PJG
 DATE - 04/02/2021

REVISED -
 REVISED -
 REVISED -
 REVISED -

**STATE OF ILLINOIS
 DEPARTMENT OF TRANSPORTATION**

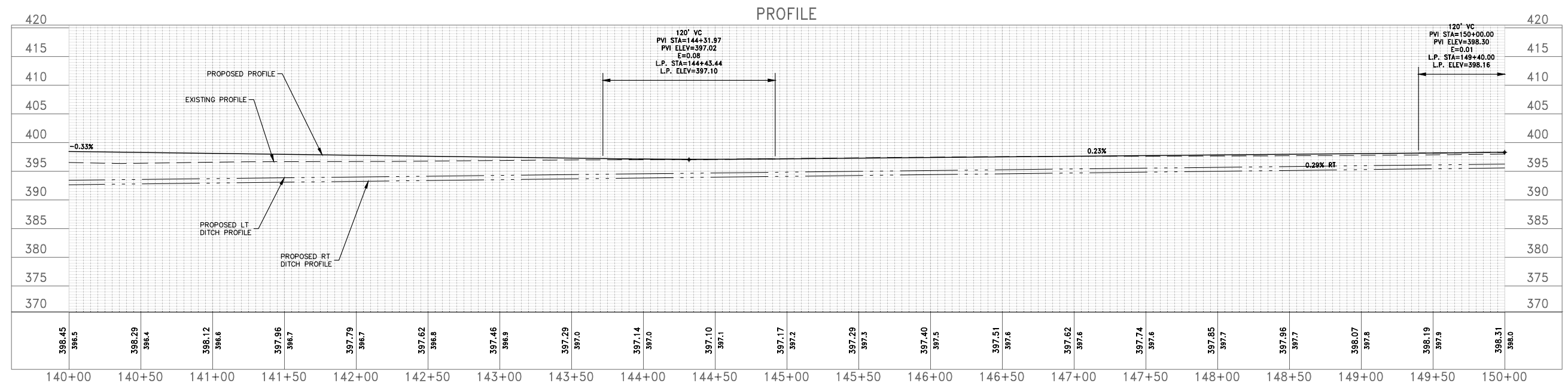
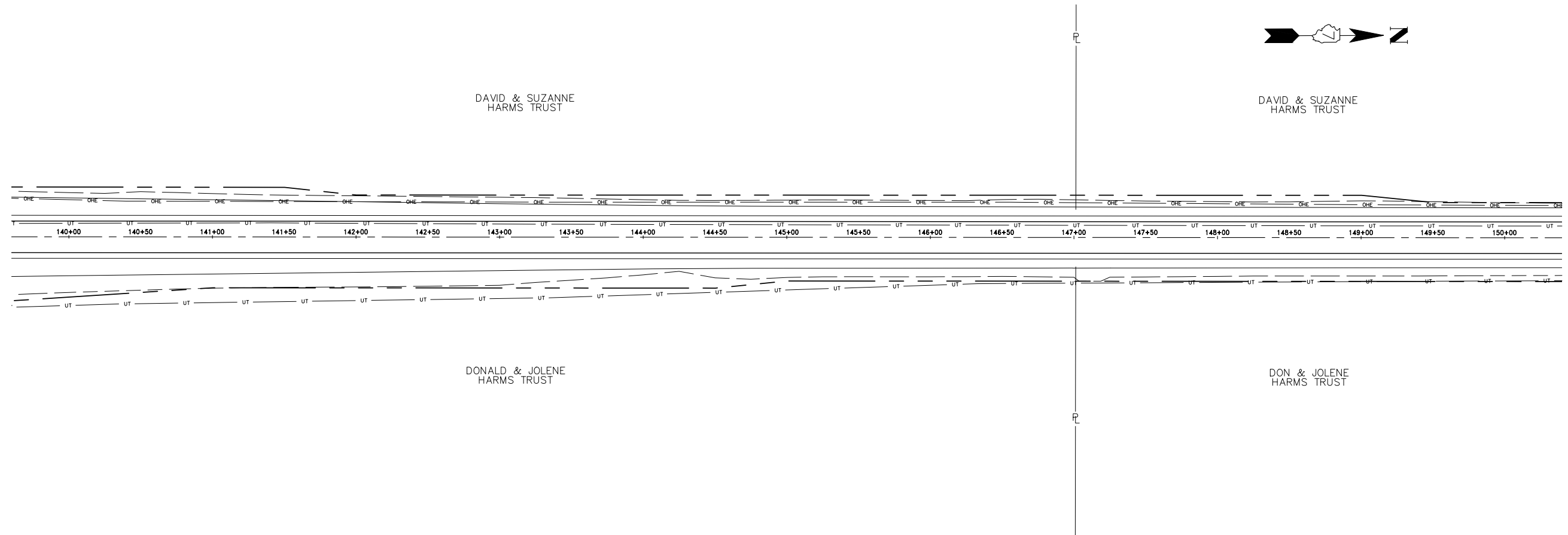
PLAN AND PROFILE

SCALE: 1" = 40' SHEET 8 OF 29 SHEETS STA. 130+00 TO STA. 140+00

F.A.S.	SECTION	COUNTY	TOTAL SHEETS	SHEET NO.
813	06-00058-00-FP	EDWARDS	29	8
CONTRACT NO.: 95641				
ILLINOIS FEDERAL AID PROJECT:				

DATE	
BY	
REVISIONS	
GRADES CHECKED	
BENCH MARKS NOTED	
SPOT ELEVATIONS CHECKED	
PROFILE	
NOTE BOOK NO.	

DATE	
BY	
REVISIONS	
GRADES CHECKED	
BENCH MARKS NOTED	
SPOT ELEVATIONS CHECKED	
PROFILE	
NOTE BOOK NO.	



HAMPTON, LENZINI AND RENWICK, INC.
 323 WEST THIRD STREET, P.O. BOX 160
 MT. CARMEL, ILLINOIS 62863
 ILLINOIS PROFESSIONAL DESIGN FIRM
 LS / PE / SE CORP. 184.000959

PROJECT NO. - 20.0068.330
 FILE NAME - 200068.dwg
 PLOT SCALE - 1" = 40'
 PLOT DATE - 04/20/2021

DESIGNED - SEK
 DRAWN - SEK
 CHECKED - PJG
 DATE - 04/02/2021

REVISED -
 REVISED -
 REVISED -
 REVISED -

**STATE OF ILLINOIS
 DEPARTMENT OF TRANSPORTATION**

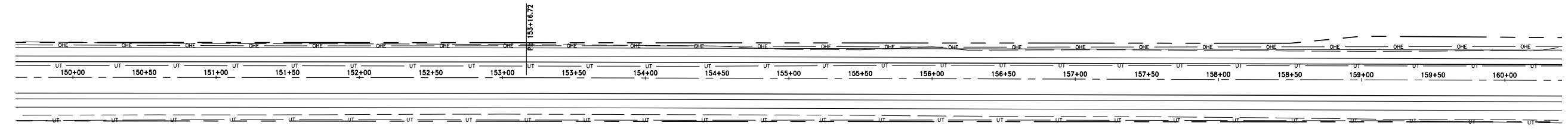
PLAN AND PROFILE

SCALE: 1" = 40' SHEET 9 OF 29 SHEETS STA. 140+00 TO STA. 150+00

F.A.S.	SECTION	COUNTY	TOTAL SHEETS	SHEET NO.
813	06-00058-00-FP	EDWARDS	29	9
CONTRACT NO.: 95641				
ILLINOIS FEDERAL AID PROJECT:				



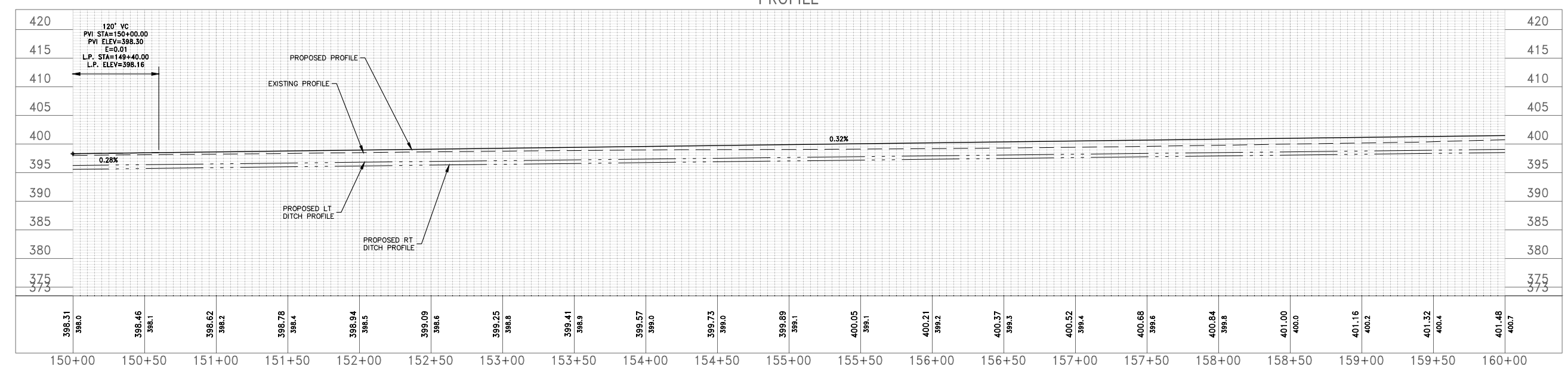
DAVID & SUZANNE
HARMS TRUST



DON & JOLENE
HARMS TRUST

DON & JOLENE
HARMS TRUST

PROFILE



DATE	BY

REVISIONS CHECKED
 GRADES CHECKED
 BENCH MARKS NOTED
 SURVEY DATA CHECKED
 PROFILE NO. _____

DATE	BY

REVISIONS CHECKED
 GRADES CHECKED
 BENCH MARKS NOTED
 SURVEY DATA CHECKED
 PROFILE NO. _____

HAMPTON, LENZINI AND RENWICK, INC.
 323 WEST THIRD STREET, P.O. BOX 160
 MT. CARMEL, ILLINOIS 62863
 ILLINOIS PROFESSIONAL DESIGN FIRM
 LS / PE / SE CORP. 184.000959

PROJECT NO. - 20.0068.330	DESIGNED - SEK	REVISED -
FILE NAME - 200068.dwg	DRAWN - SEK	REVISED -
PLOT SCALE - 1" = 40'	CHECKED - PJG	REVISED -
PLOT DATE - 04/20/2021	DATE - 04/02/2021	REVISED -

**STATE OF ILLINOIS
DEPARTMENT OF TRANSPORTATION**

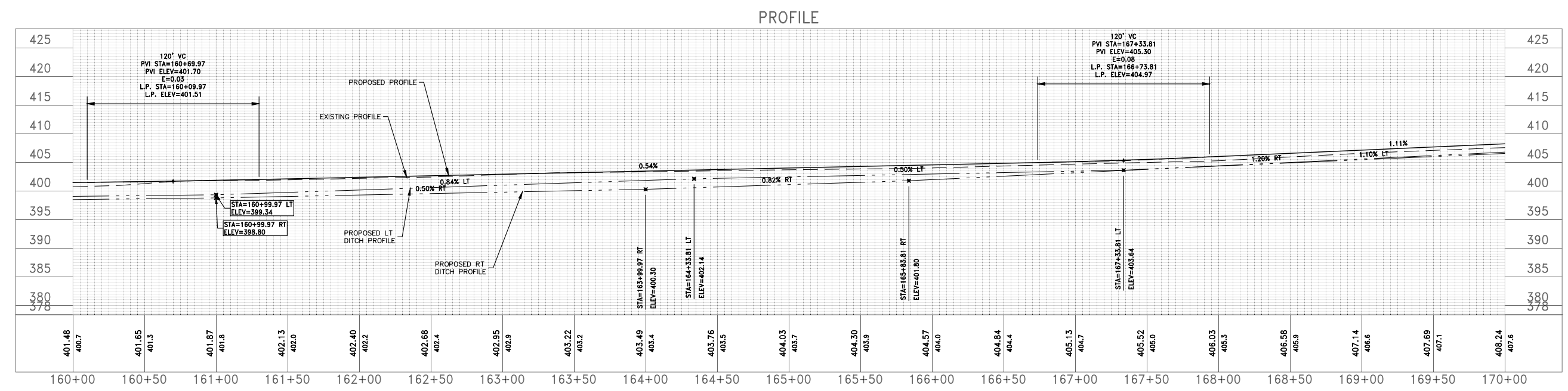
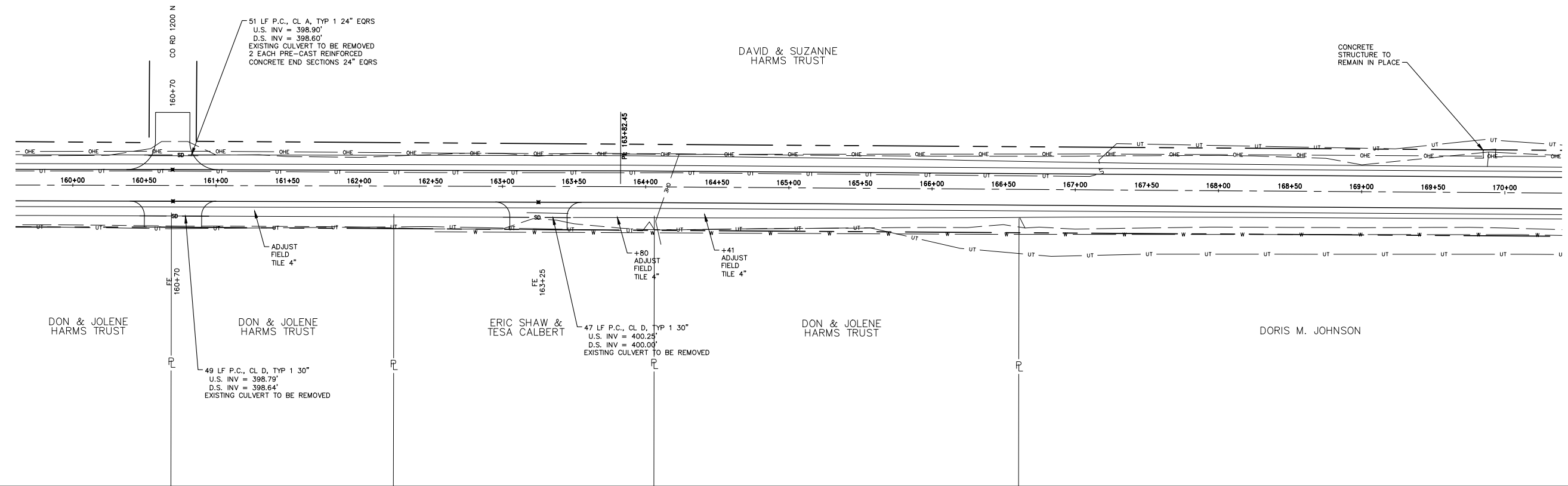
PLAN AND PROFILE			
SCALE: 1" = 40'	SHEET 10 OF 29 SHEETS	STA. 150+00	TO STA. 160+00

F.A.S. 813	SECTION 06-00058-00-FP	COUNTY EDWARDS	TOTAL SHEETS 29	SHEET NO. 10
CONTRACT NO.: 95641				
ILLINOIS FEDERAL AID PROJECT:				



DATE	BY

DATE	BY



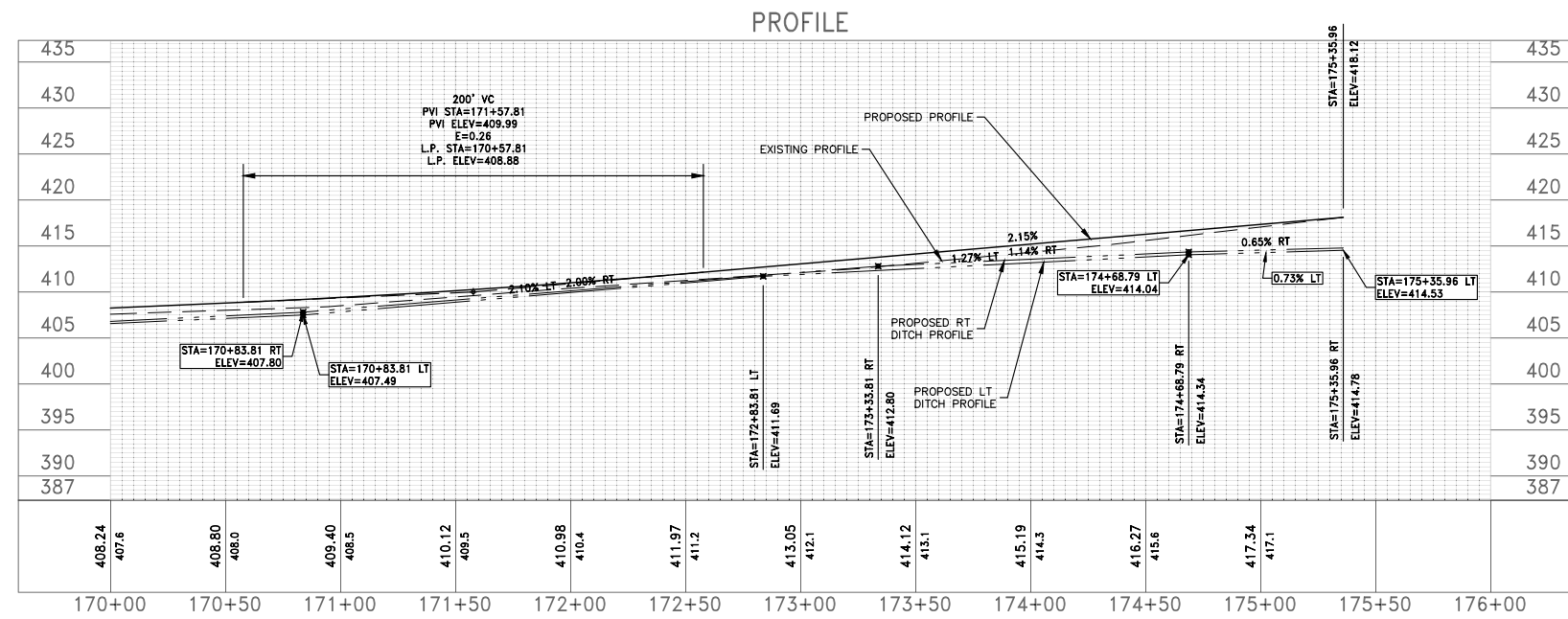
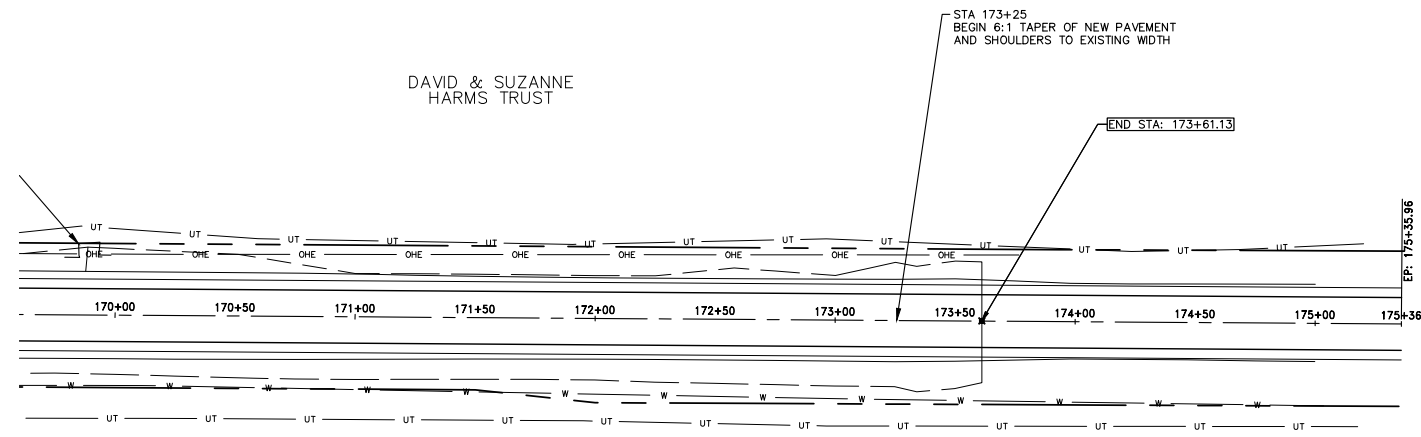
HAMPTON, LENZINI AND RENWICK, INC.
 323 WEST THIRD STREET, P.O. BOX 160
 MT. CARMEL, ILLINOIS 62863
 ILLINOIS PROFESSIONAL DESIGN FIRM
 LS / PE / SE CORP. 184.000999

PROJECT NO. - 20.0068.330	DESIGNED - SEK	REVISED -
FILE NAME - 200068.dwg	DRAWN - SEK	REVISED -
PLOT SCALE - 1" = 40'	CHECKED - PJG	REVISED -
PLOT DATE - 04/20/2021	DATE - 04/02/2021	REVISED -

**STATE OF ILLINOIS
 DEPARTMENT OF TRANSPORTATION**

PLAN AND PROFILE	
SCALE: 1" = 40'	SHEET 11 OF 29 SHEETS
STA. 160+00	TO STA. 170+00

F.A.S.	SECTION	COUNTY	TOTAL SHEETS	SHEET NO.
813	06-00058-00-FP	EDWARDS	29	11
CONTRACT NO.: 95641				
ILLINOIS FEDERAL AID PROJECT:				



HAMPTON, LENZINI AND RENWICK, INC.
 323 WEST THIRD STREET, P.O. BOX 160
 MT. CARMEL, ILLINOIS 62863
 ILLINOIS PROFESSIONAL DESIGN FIRM
 LS / PE / SE CORP. 184.000959

PROJECT NO. - 20.0068.330
 FILE NAME - 200068.dwg
 PLOT SCALE - 1" = 40'
 PLOT DATE - 04/20/2021

DESIGNED - SEK
 DRAWN - SEK
 CHECKED - PJG
 DATE - 04/02/2021

REVISED -
 REVISED -
 REVISED -
 REVISED -

**STATE OF ILLINOIS
 DEPARTMENT OF TRANSPORTATION**

PLAN AND PROFILE

SCALE: 1" = 40' SHEET 12 OF 29 SHEETS STA. 170+00 TO STA. 176+00

F.A.S.	SECTION	COUNTY	TOTAL SHEETS	SHEET NO.
813	06-00058-00-FP	EDWARDS	29	12
CONTRACT NO.: 95641				
ILLINOIS FEDERAL AID PROJECT:				

DATE	BY

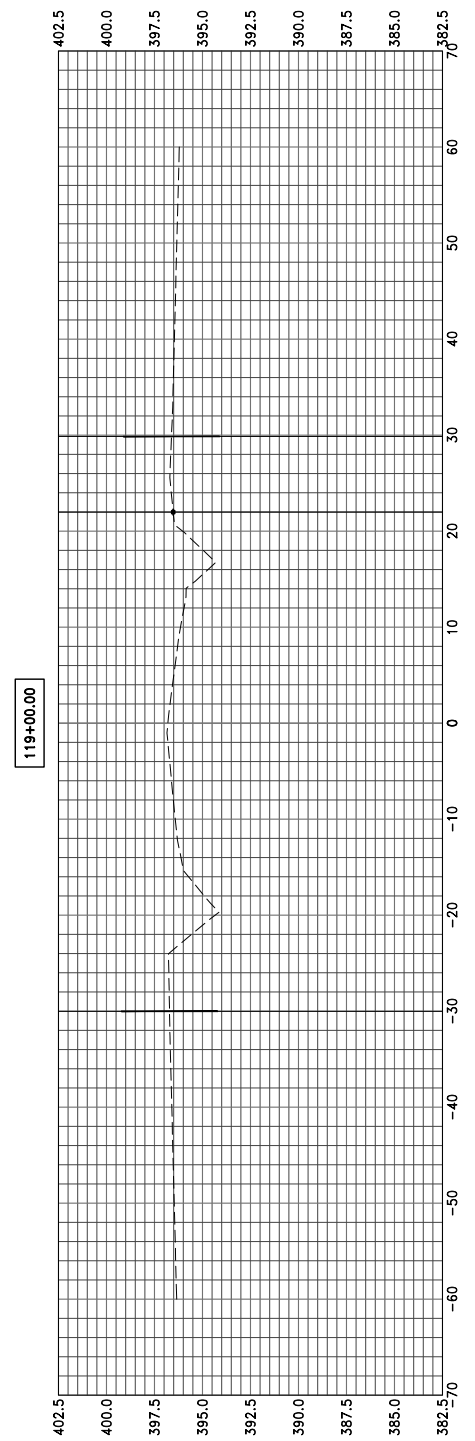
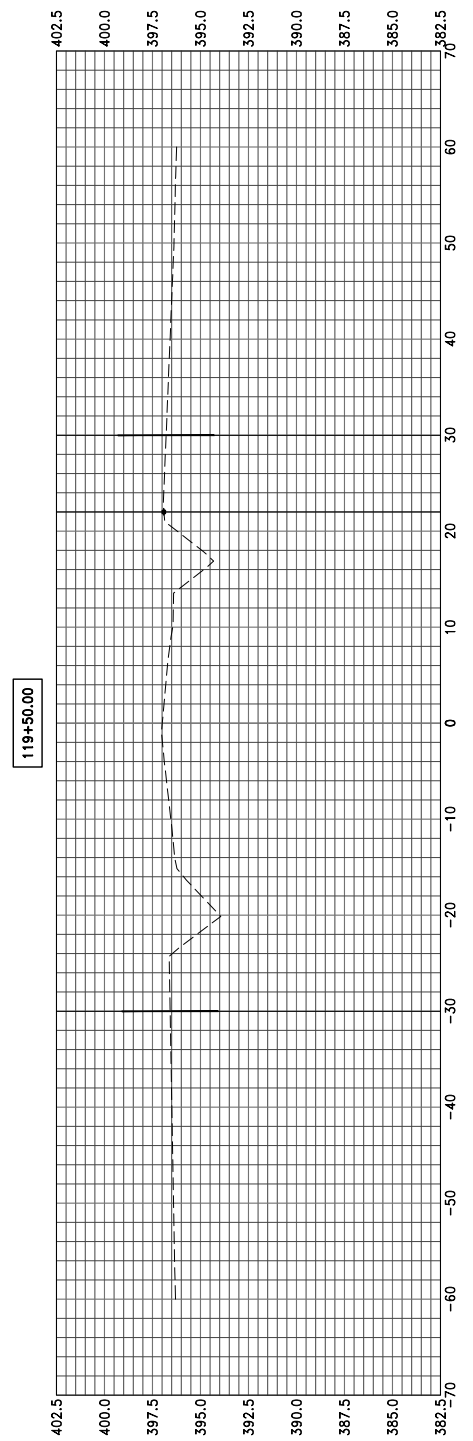
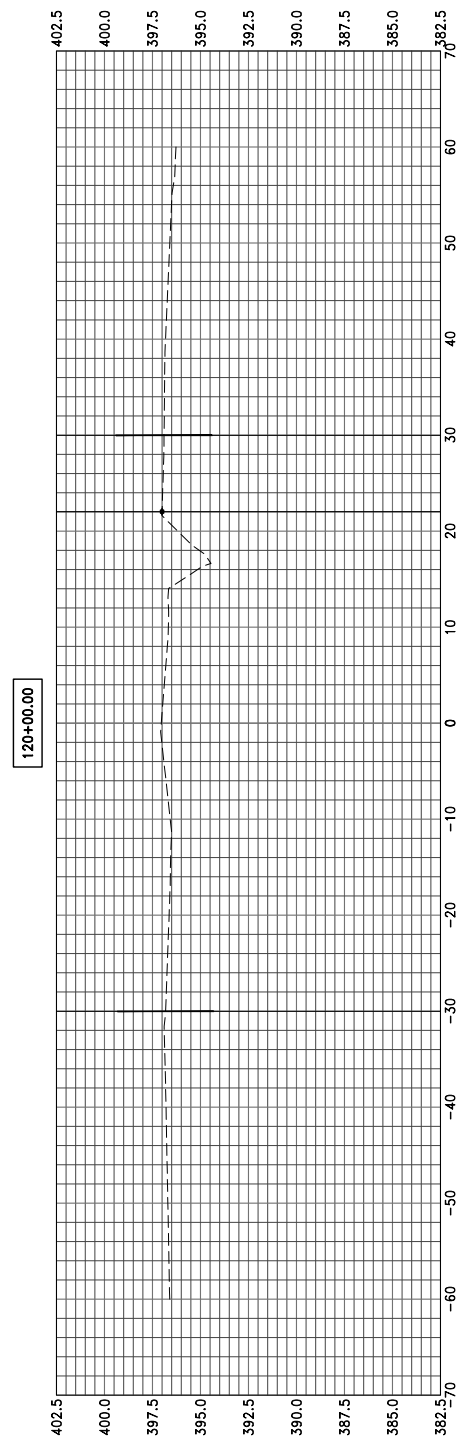
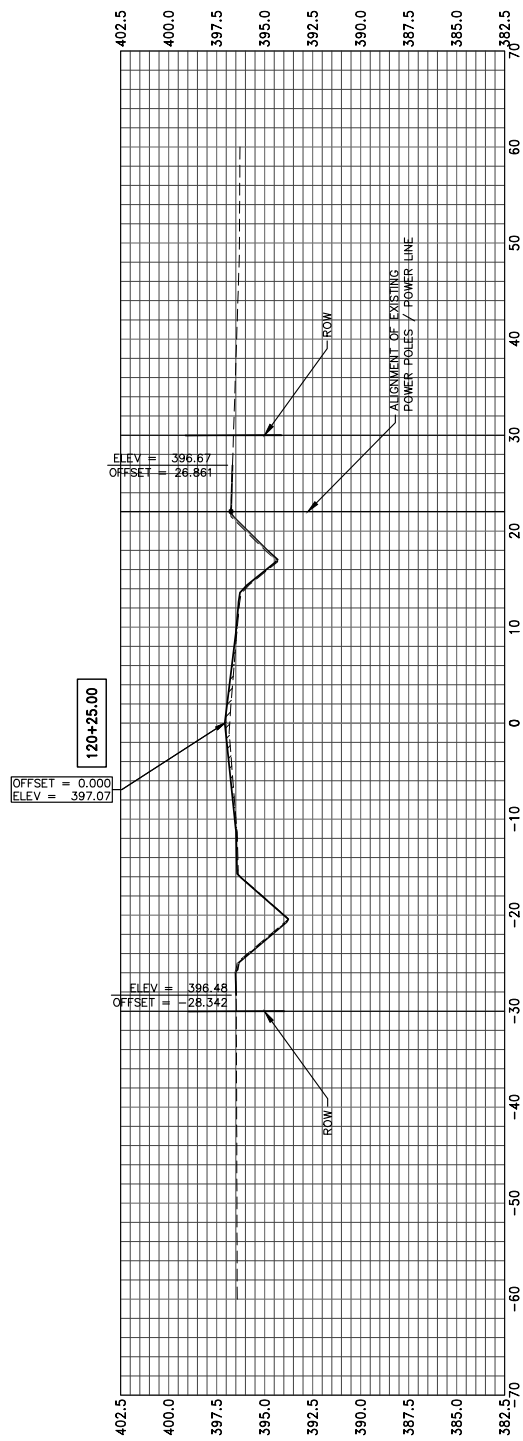
PROFILE
 REVISIONS
 GRADES CHECKED
 NOTE BOOK NO.
 BENCH MARKS NOTED
 SURVEY POINTS CHECKED

DATE	BY

PROFILE
 REVISIONS
 GRADES CHECKED
 NOTE BOOK NO.
 BENCH MARKS NOTED
 SURVEY POINTS CHECKED

PROFILE	DATE	BY
REVISIONS		
NOTED		
GRADES CHECKED		
BENCH MARKS NOTED		
ADJUSTMENTS CHECKED		
NO.		

PROFILE	DATE	BY
REVISIONS		
NOTED		
GRADES CHECKED		
BENCH MARKS NOTED		
ADJUSTMENTS CHECKED		
NO.		



HAMPTON, LENZINI AND RENWICK, INC.
 323 WEST THIRD STREET, P.O. BOX 160
 MT. CARMEL, ILLINOIS 62863
 ILLINOIS PROFESSIONAL DESIGN FIRM
 LS / PE / SE CORP. 184.000959

PROJECT NO. - 20.0068.330
 FILE NAME - 200068.dwg
 PLOT SCALE - 2V:5H
 PLOT DATE - 04/20/2021

DESIGNED - SEK
 DRAWN - SEK
 CHECKED - PJG
 DATE - 01/25/2021

REVISED -
 REVISED -
 REVISED -
 REVISED -

**STATE OF ILLINOIS
 DEPARTMENT OF TRANSPORTATION**

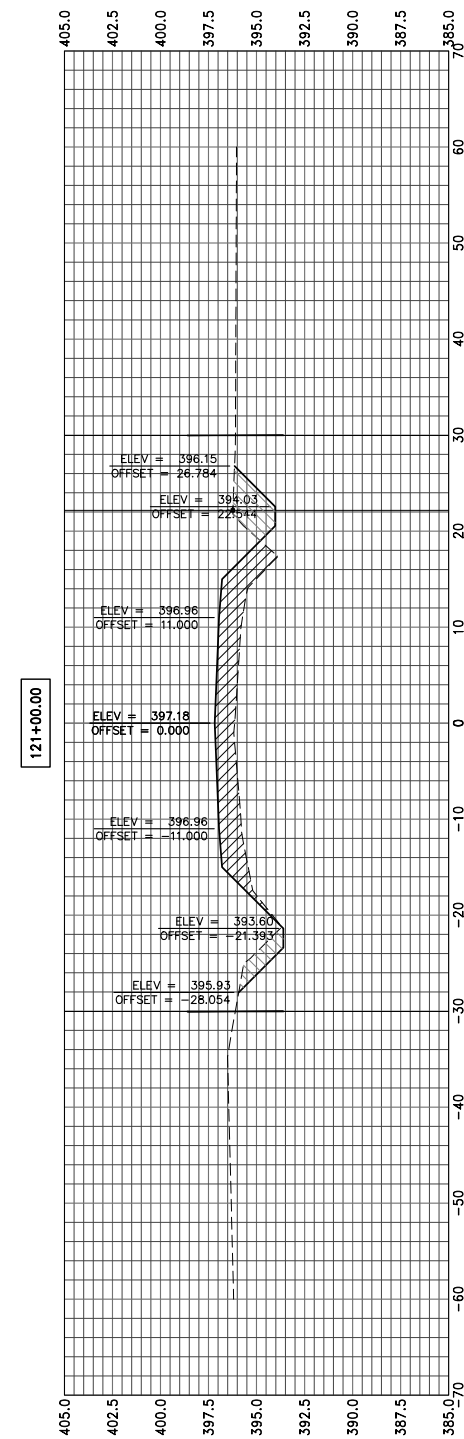
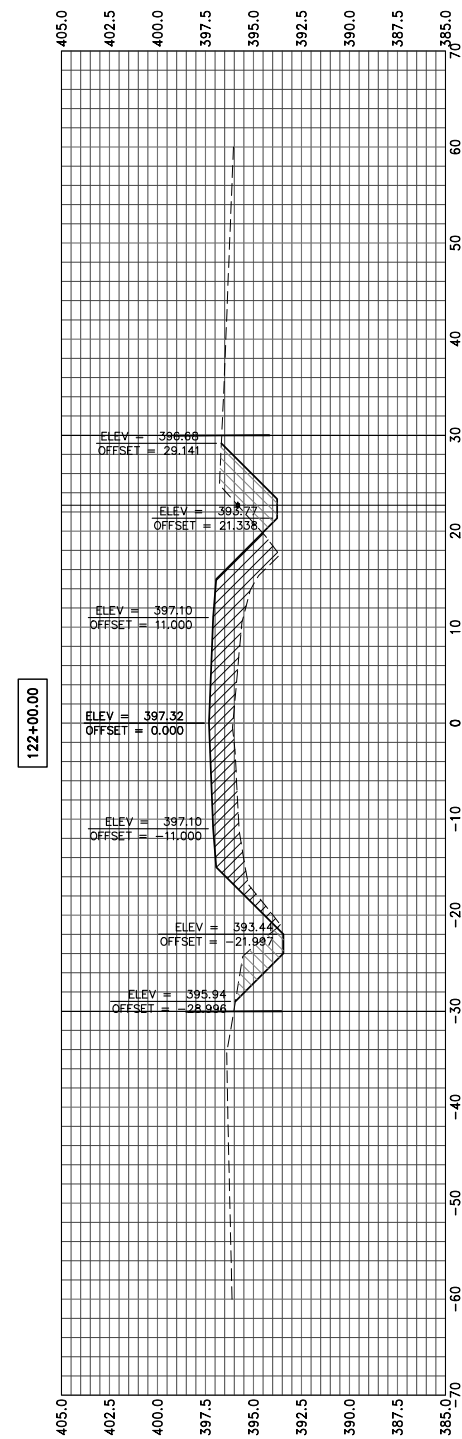
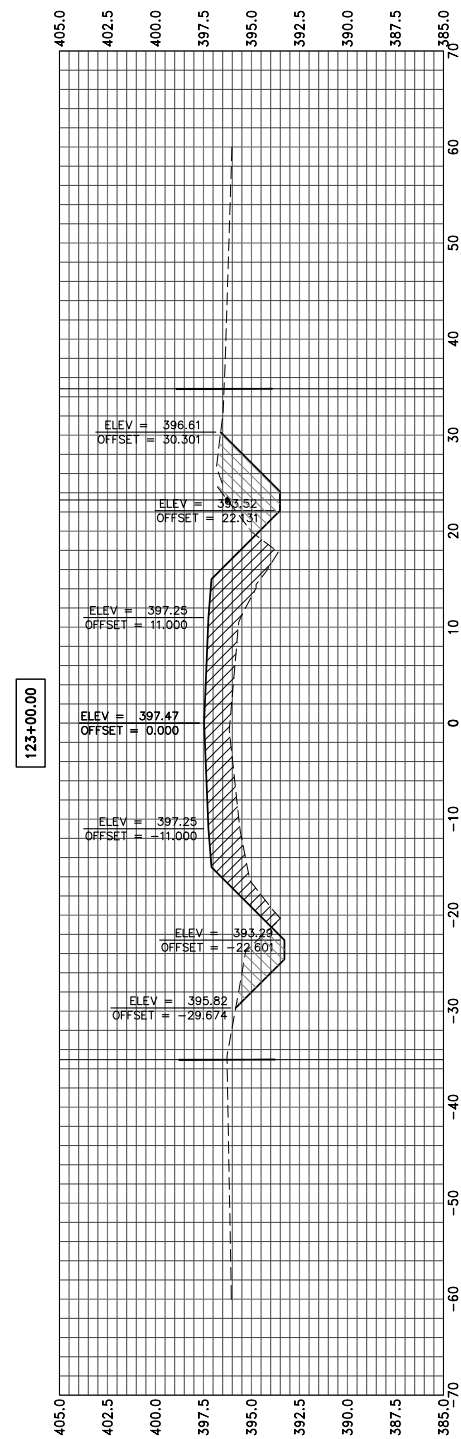
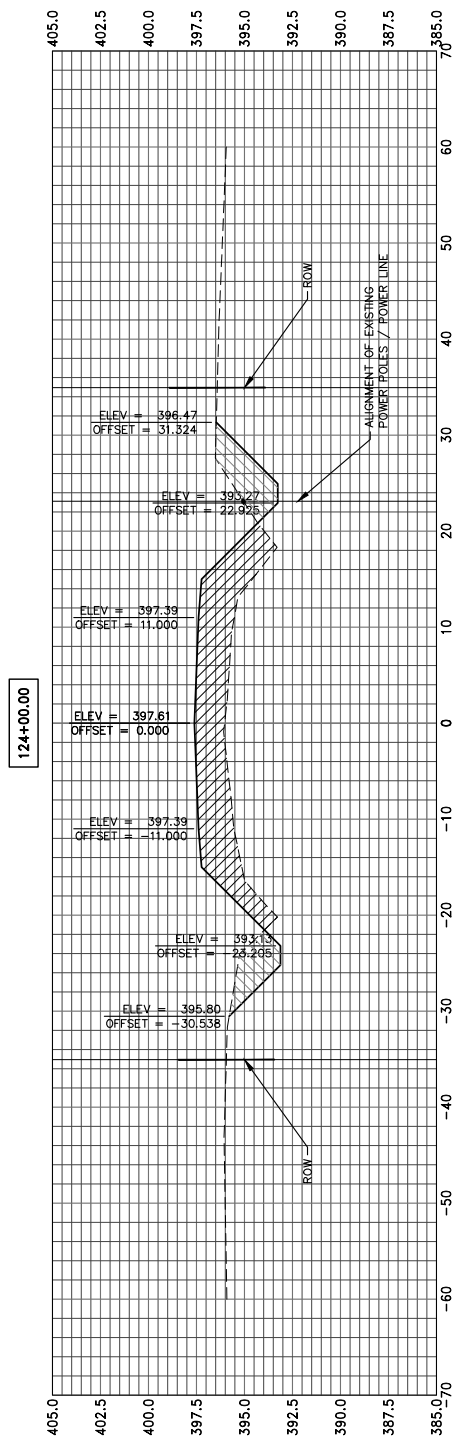
CROSS SECTIONS

SCALE: 1" = 10' SHEET 13 OF 29 SHEETS STA. 119+00 TO STA. 120+25

F.A.S.	SECTION	COUNTY	TOTAL SHEETS	SHEET NO.
813	06-00058-00-FP	EDWARDS	29	13
CONTRACT NO.: 95641				
ILLINOIS FEDERAL AID PROJECT:				

DATE	BY	REVISIONS
		1. GRADES CHECKED
		2. BENCH MARKS NOTED
		3. SURVEY POINTS CHECKED
		4. GRADES CHECKED
		5. BENCH MARKS NOTED
		6. SURVEY POINTS CHECKED
PROFILE		NO.
NOTE BOOK		
NO.		

DATE	BY	REVISIONS
		1. GRADES CHECKED
		2. BENCH MARKS NOTED
		3. SURVEY POINTS CHECKED
		4. GRADES CHECKED
		5. BENCH MARKS NOTED
		6. SURVEY POINTS CHECKED
PROFILE		NO.
NOTE BOOK		
NO.		

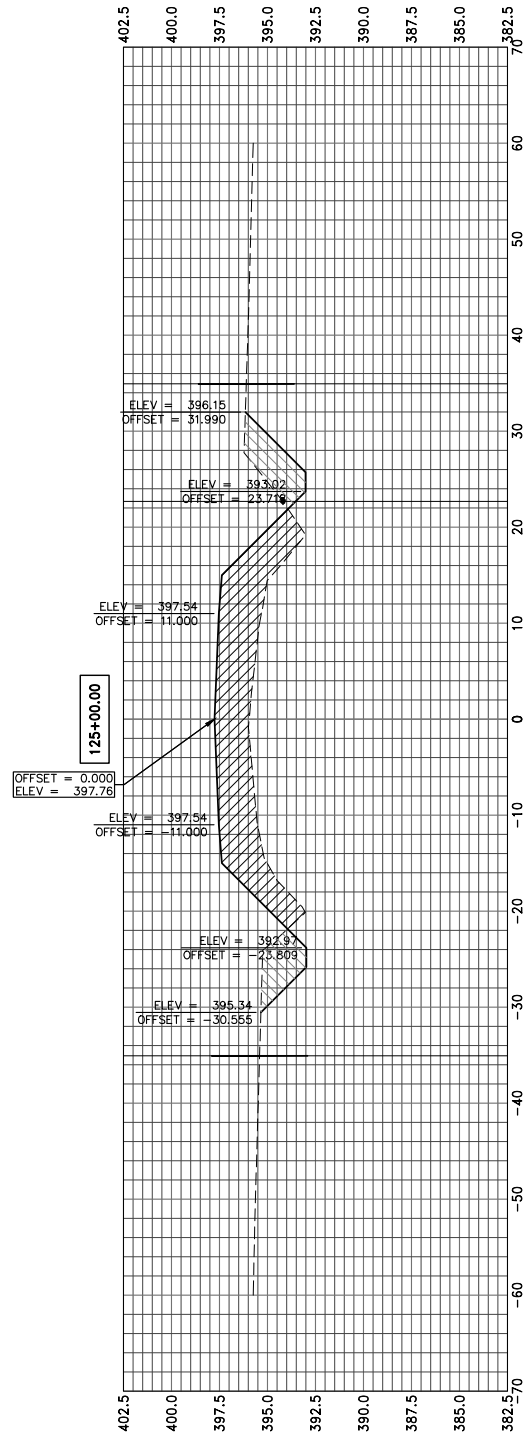
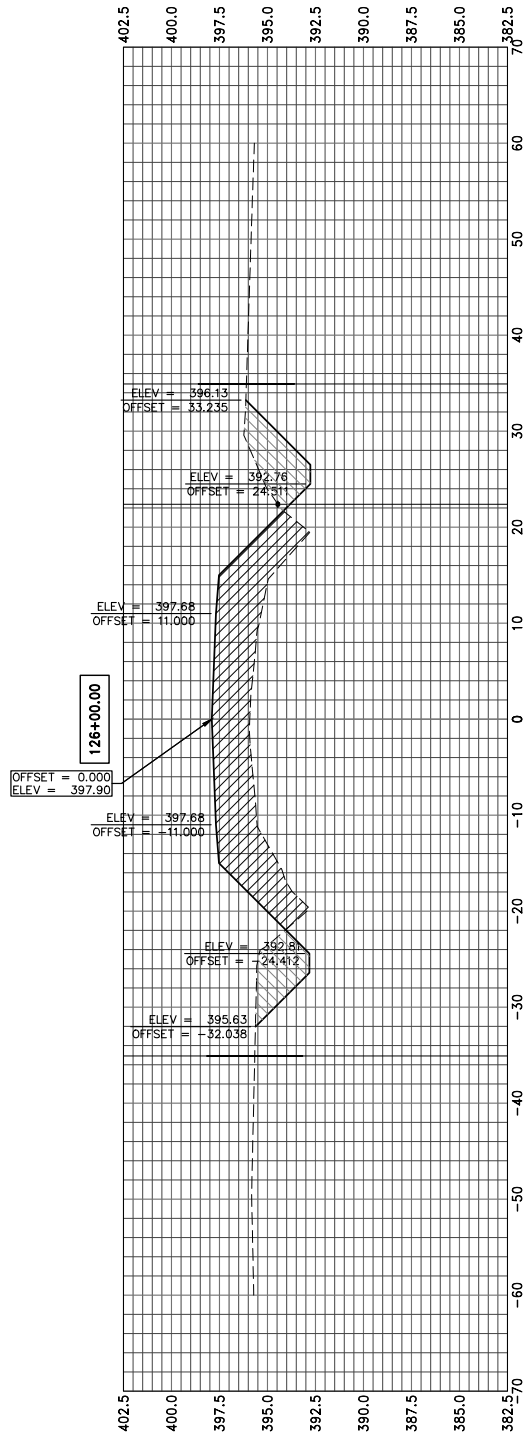
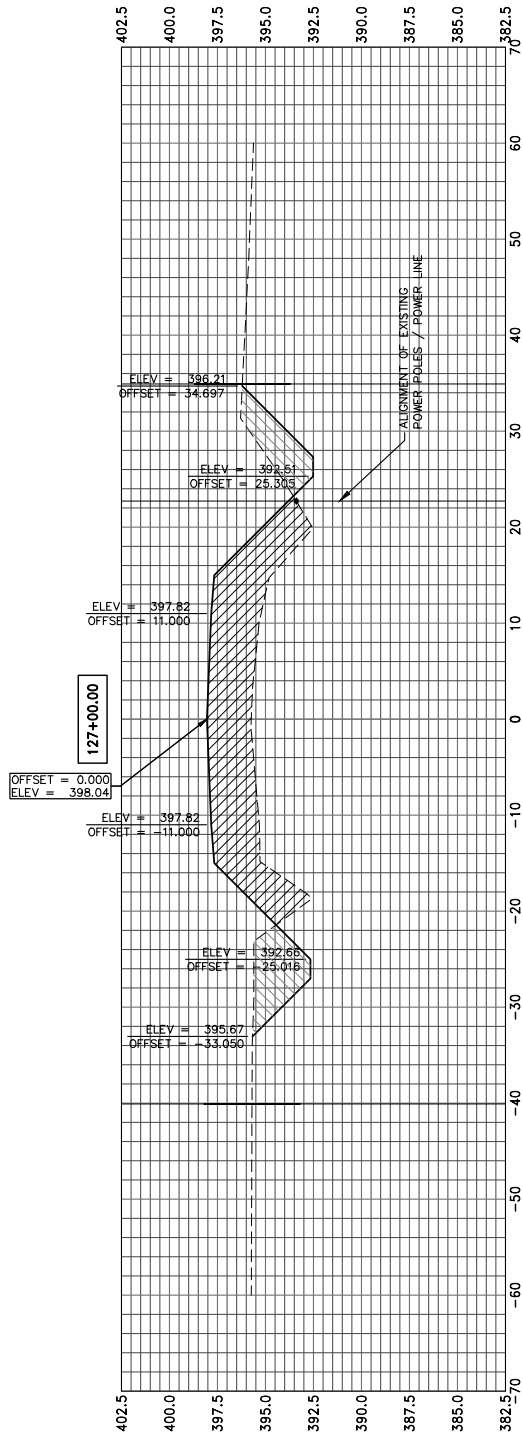
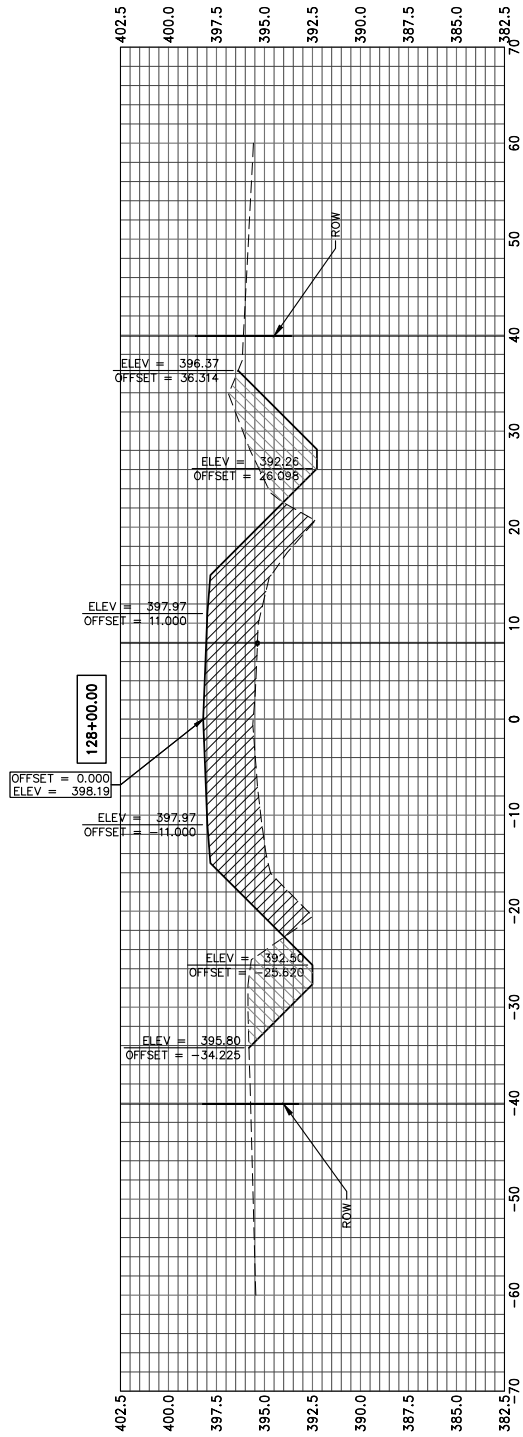


REVISION	DATE

PROFILE
 GRADES CHECKED
 BENCH MARKS NOTED
 ELEVATIONS/offsets CHECKED

BY	DATE

PROFILE
 GRADES CHECKED
 BENCH MARKS NOTED
 ELEVATIONS/offsets CHECKED



HAMPTON, LENZINI AND RENWICK, INC.
 323 WEST THIRD STREET, P.O. BOX 160
 MT. CARMEL, ILLINOIS 62863
 ILLINOIS PROFESSIONAL DESIGN FIRM
 LS / PE / SE CORP. 184.000959

PROJECT NO. - 20.0068.330	DESIGNED - SEK	REVISED -
FILE NAME - 200068.dwg	DRAWN - SEK	REVISED -
PLOT SCALE - 2V:5H	CHECKED - PJG	REVISED -
PLOT DATE - 04/20/2021	DATE - 01/25/2021	REVISED -

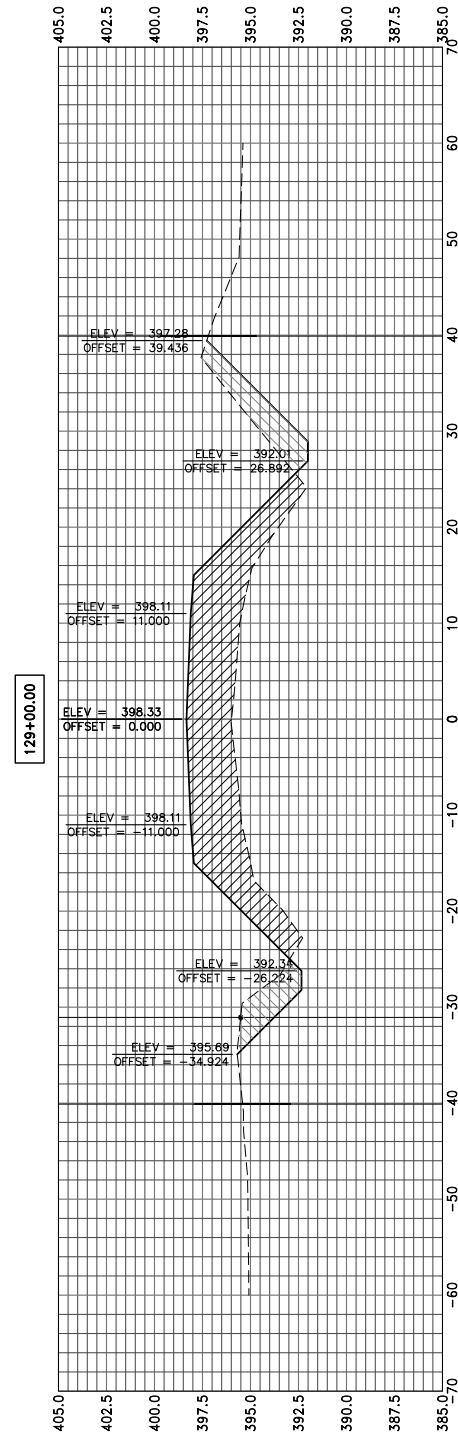
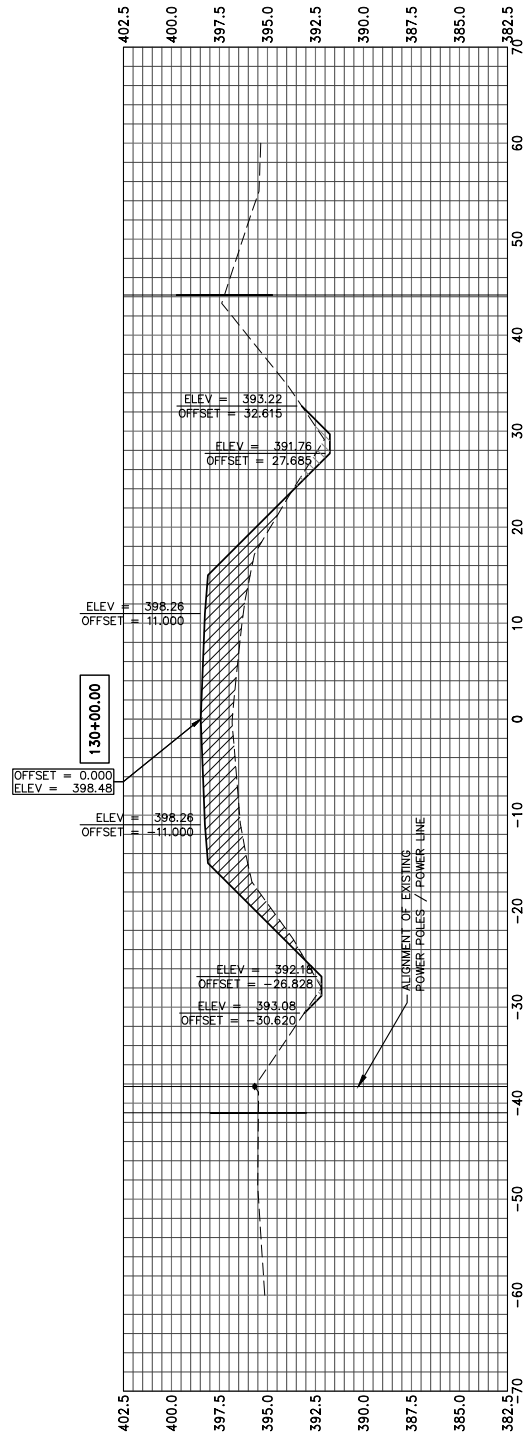
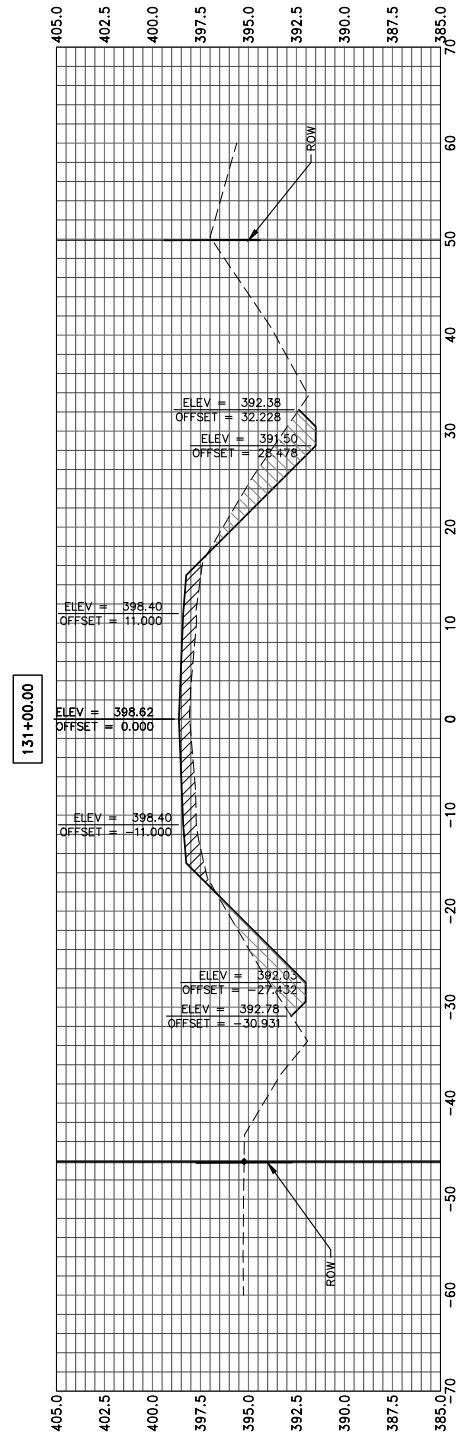
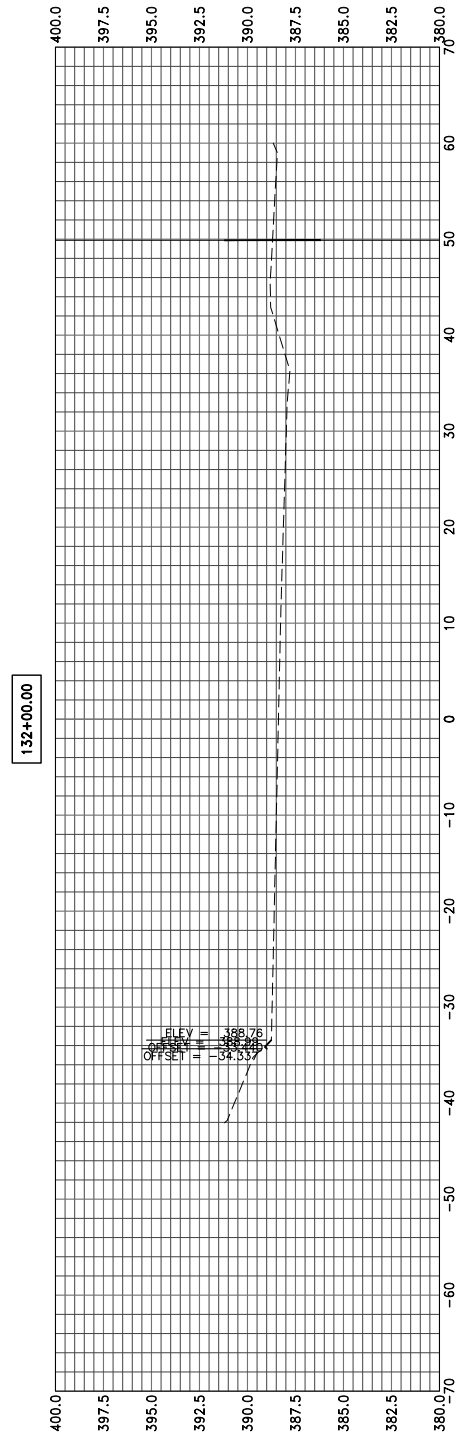
**STATE OF ILLINOIS
 DEPARTMENT OF TRANSPORTATION**

CROSS SECTIONS
 SCALE: 1" = 10'
 SHEET 15 OF 29 SHEETS STA. 125+00 TO STA. 128+00

F.A.S. 813	SECTION 06-00058-00-FP	COUNTY EDWARDS	TOTAL SHEETS 29	SHEET NO. 15
CONTRACT NO.: 95641				
ILLINOIS FEDERAL AID PROJECT:				

DATE	BY	PROFILE
		DESIGNED
		PLOTTED
		GRADES CHECKED
		BENCH MARKS NOTED
		ADJUSTMENTS CHECKED
		NO. _____

DATE	BY	PROFILE
		DESIGNED
		PLOTTED
		GRADES CHECKED
		BENCH MARKS NOTED
		ADJUSTMENTS CHECKED
		NO. _____



HAMPTON, LENZINI AND RENWICK, INC.
 323 WEST THIRD STREET, P.O. BOX 160
 MT. CARMEL, ILLINOIS 62863
ILR ILLINOIS PROFESSIONAL DESIGN FIRM
 LS / PE / SE CORP. 184.000959

PROJECT NO. - 20.0068.330
 FILE NAME - 200068.dwg
 PLOT SCALE - 2V:5H
 PLOT DATE - 04/20/2021

DESIGNED - SEK
 DRAWN - SEK
 CHECKED - PJG
 DATE - 01/25/2021

REVISSED -
 REVISSED -
 REVISSED -
 REVISSED -

**STATE OF ILLINOIS
 DEPARTMENT OF TRANSPORTATION**

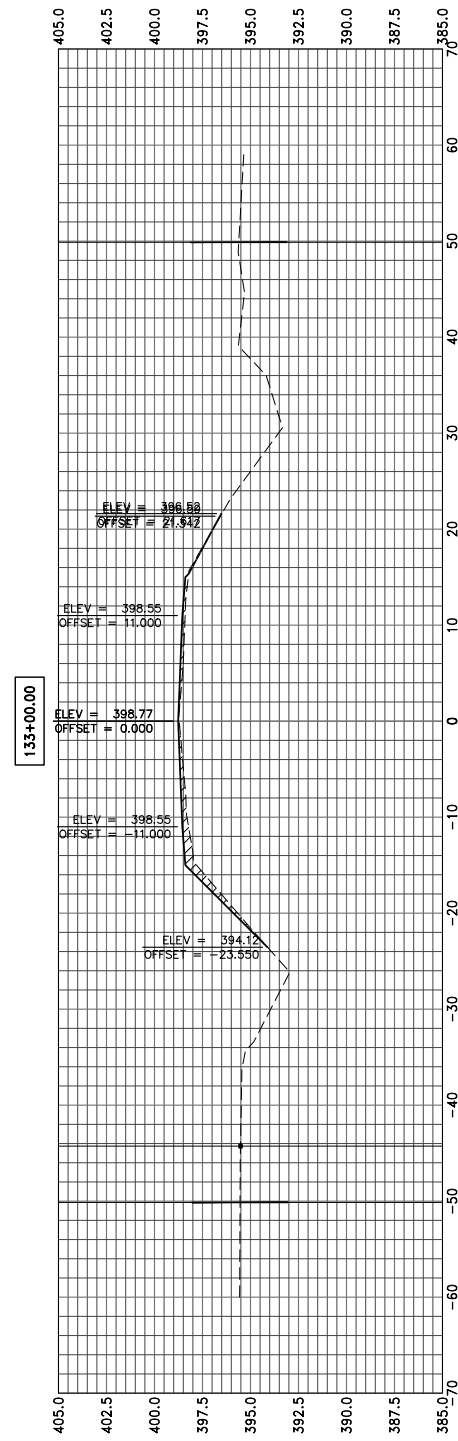
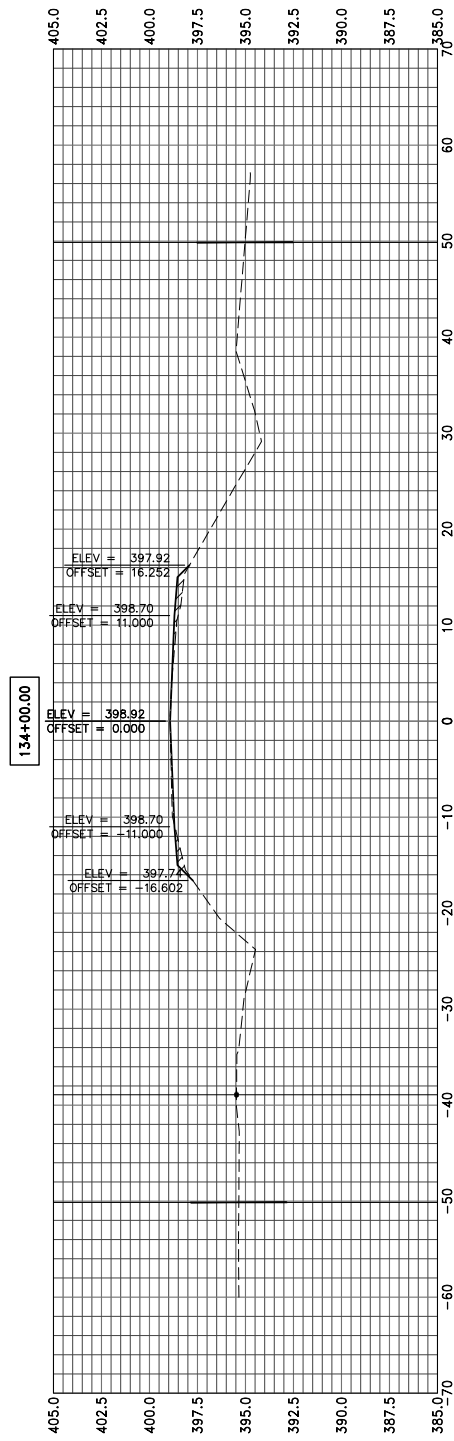
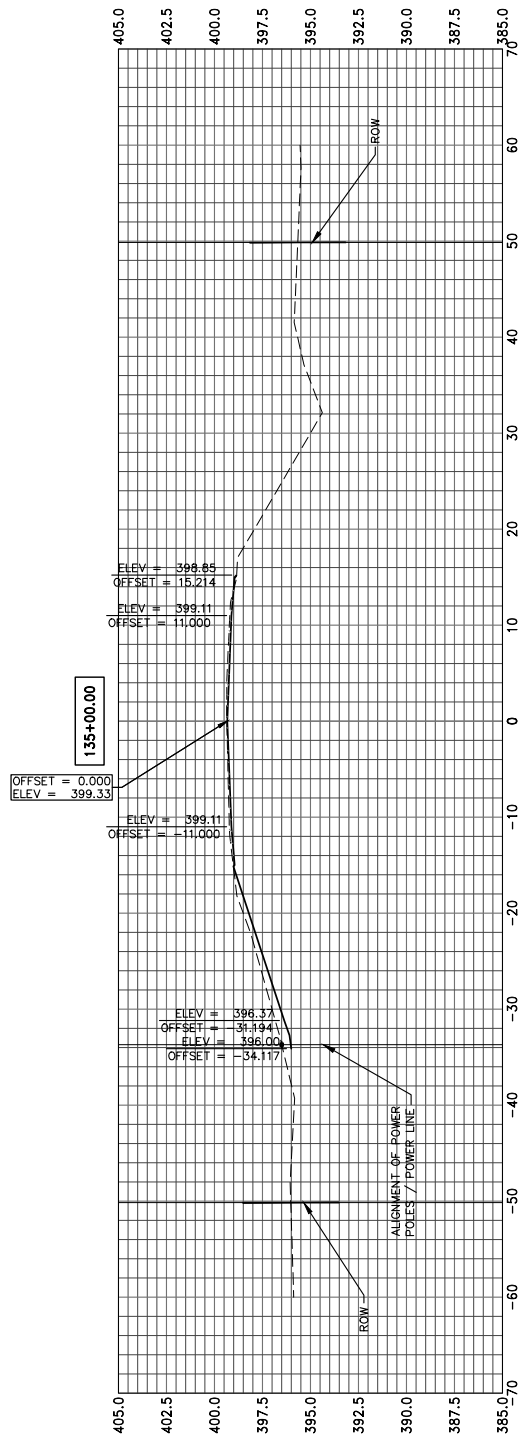
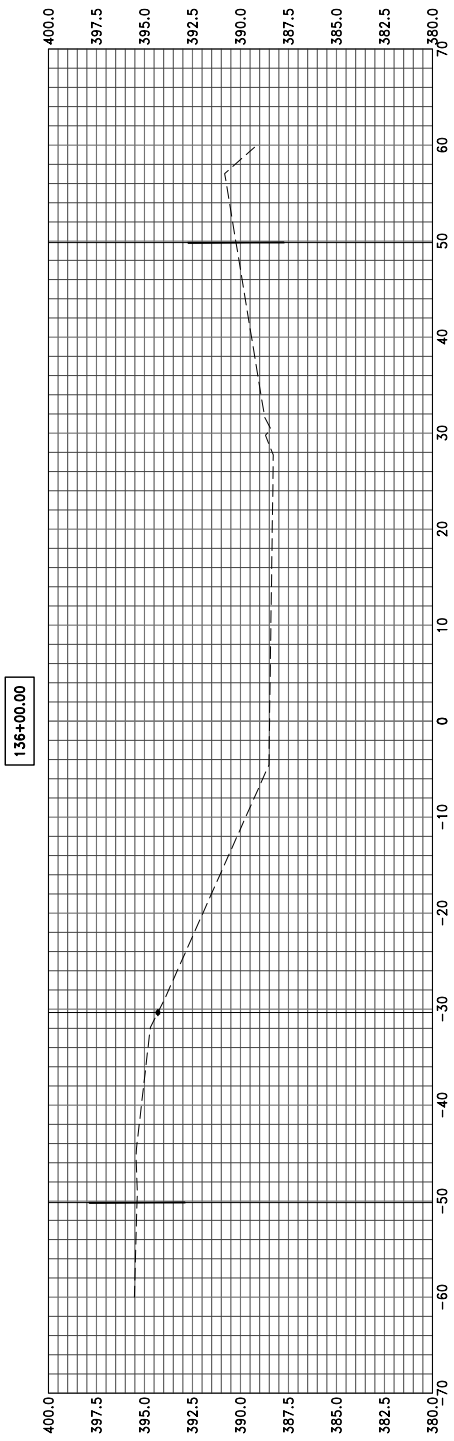
CROSS SECTIONS

SCALE: 1" = 10'
 SHEET 16 OF 29 SHEETS STA. 129+00 TO STA. 132+00

F.A.S.	SECTION	COUNTY	TOTAL SHEETS	SHEET NO.
813	06-00058-00-FP	EDWARDS	29	16
CONTRACT NO.: 95641				
ILLINOIS FEDERAL AID PROJECT:				

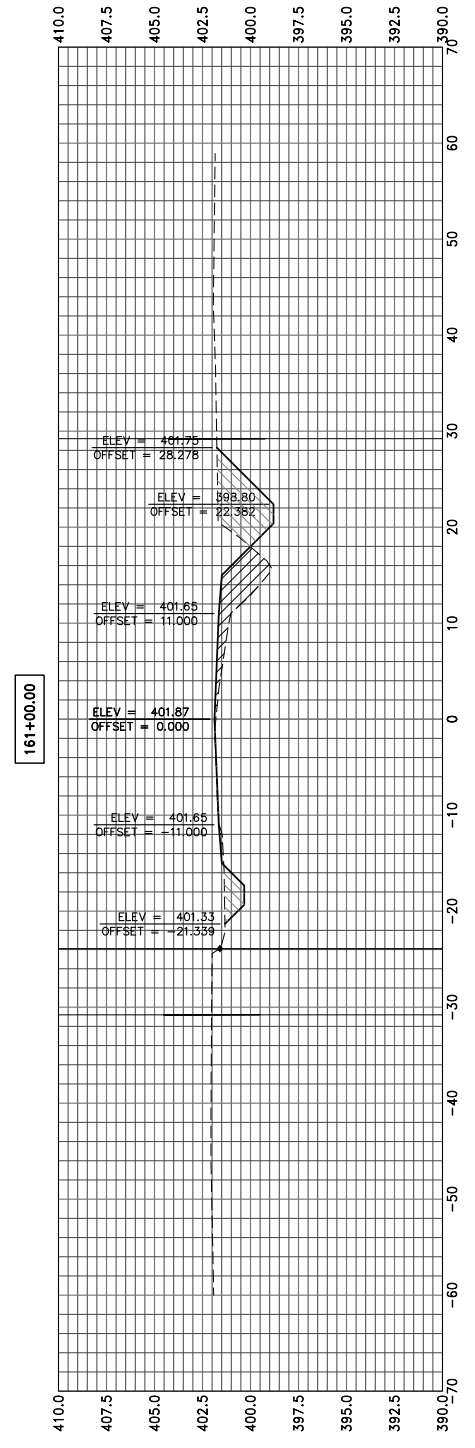
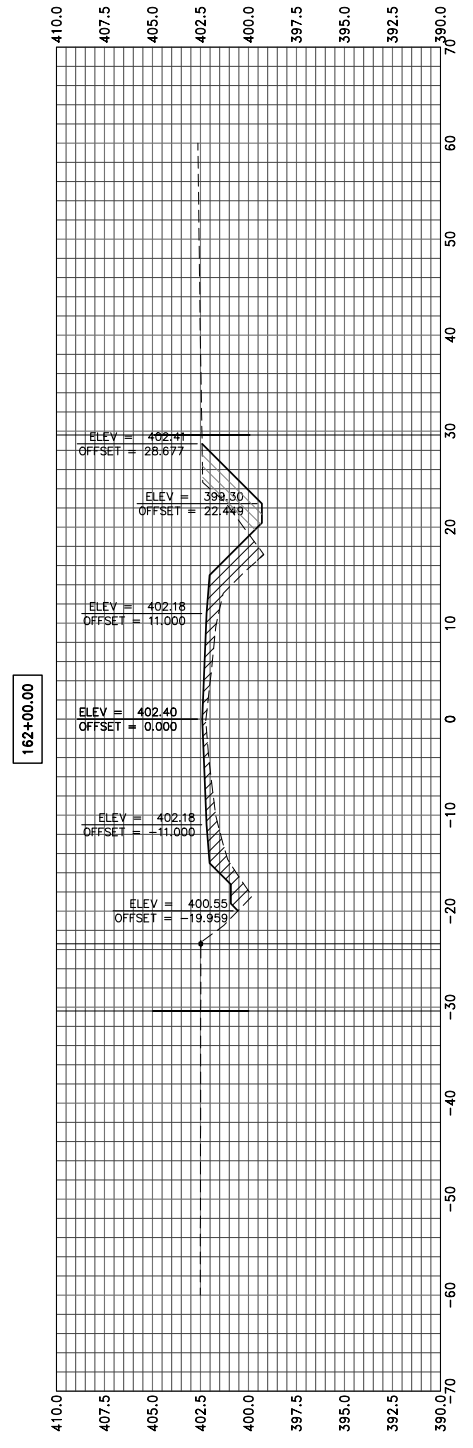
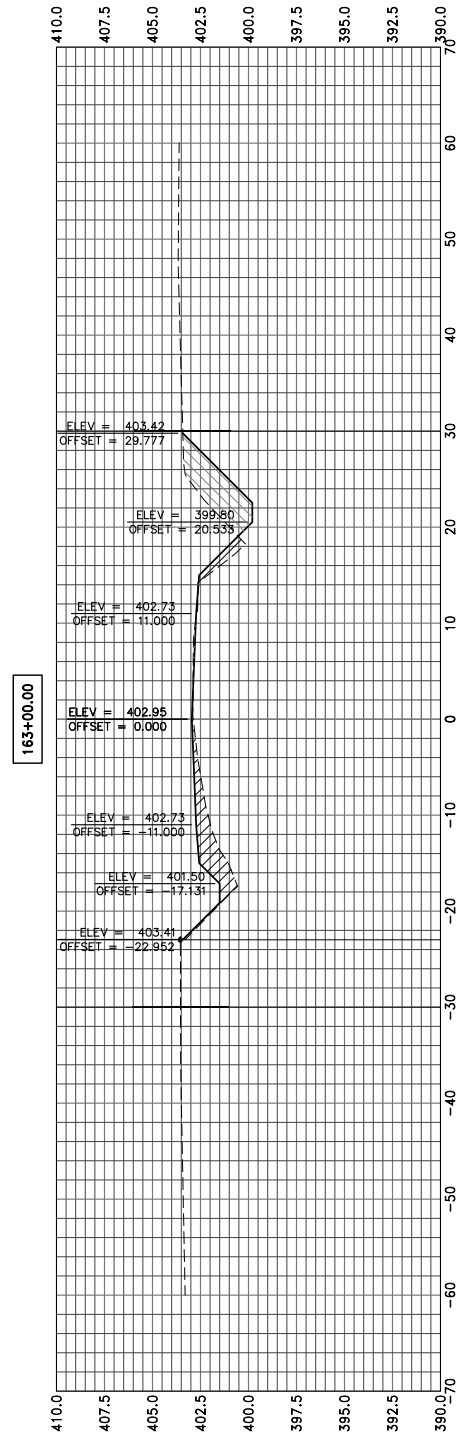
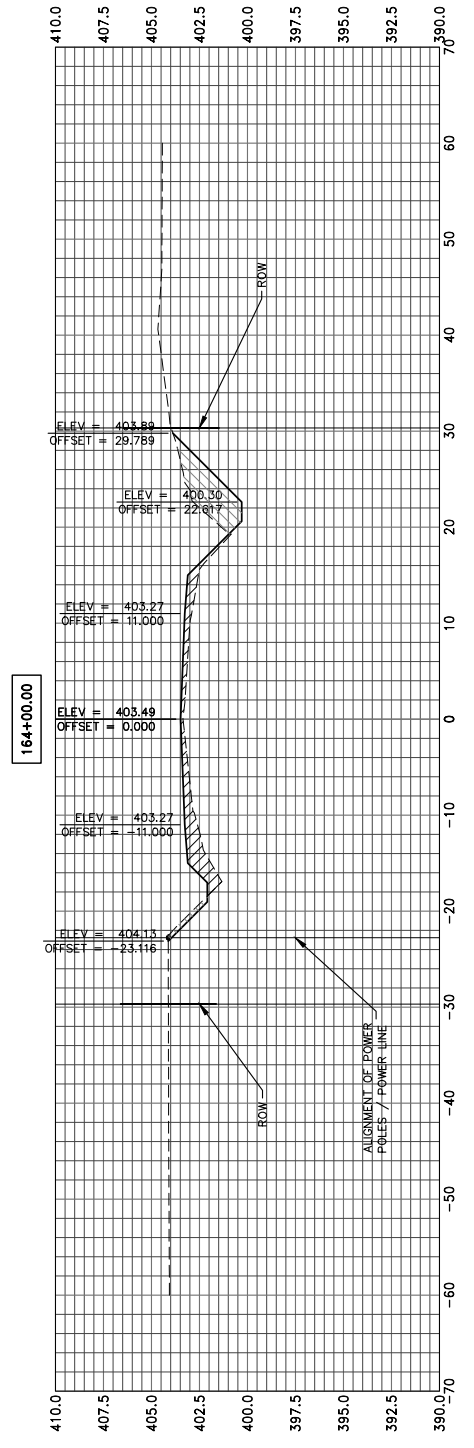
PROFILE	DATE	BY
DESIGNED		
PLOTTED		
GRADES CHECKED		
BENCH MARKS NOTED		
NO. _____		

PROFILE	DATE	BY
DESIGNED		
PLOTTED		
GRADES CHECKED		
BENCH MARKS NOTED		
NO. _____		



DATE	BY	REVISION
		REVISED PLOTTED
		GRADES CHECKED
		BENCH MARKS NOTED
		CONSTRUCTION METHODS CHECKED
		NO. _____

DATE	BY	REVISION
		REVISED PLOTTED
		GRADES CHECKED
		BENCH MARKS NOTED
		CONSTRUCTION METHODS CHECKED
		NO. _____



HAMPTON, LENZI AND RENWICK, INC.
 323 WEST THIRD STREET, P.O. BOX 160
 MT. CARMEL, ILLINOIS 62863
 ILLINOIS PROFESSIONAL DESIGN FIRM
 LS / PE / SE CORP. 184.000959

PROJECT NO. - 20.0068.330
 FILE NAME - 200068.dwg
 PLOT SCALE - 2V:5H
 PLOT DATE - 04/20/2021

DESIGNED - SEK
 DRAWN - SEK
 CHECKED - PJG
 DATE - 01/25/2021

REVISED -
 REVISED -
 REVISED -
 REVISED -

**STATE OF ILLINOIS
 DEPARTMENT OF TRANSPORTATION**

CROSS SECTIONS

SCALE: 1"=10' SHEET 24 OF 29 SHEETS STA. 161+00 TO STA. 164+00

F.A.S.	SECTION	COUNTY	TOTAL SHEETS	SHEET NO.
813	06-00058-00-FP	EDWARDS	29	24
CONTRACT NO.: 95641				

ILLINOIS FEDERAL AID PROJECT:

DATE	BY	REVISIONS
		GRADES CHECKED
		BENCH MARKS NOTED
		STRUCTURE MEASUREMENTS CHECKED
PROFILE		NOTE BOOK NO.

DATE	BY	REVISIONS
		GRADES CHECKED
		BENCH MARKS NOTED
		STRUCTURE MEASUREMENTS CHECKED
PROFILE		NOTE BOOK NO.

