

06-11-2021 LETTING ITEM 261

INDEX OF SHEETS

- 1 COVER SHEET
- 2-3 OVERALL LOCATION MAP
- 4 GENERAL NOTES, SUMMARY OF QUANTITIES & TYPICAL SECTION
- 5-23 PLANS & SCHEDULES

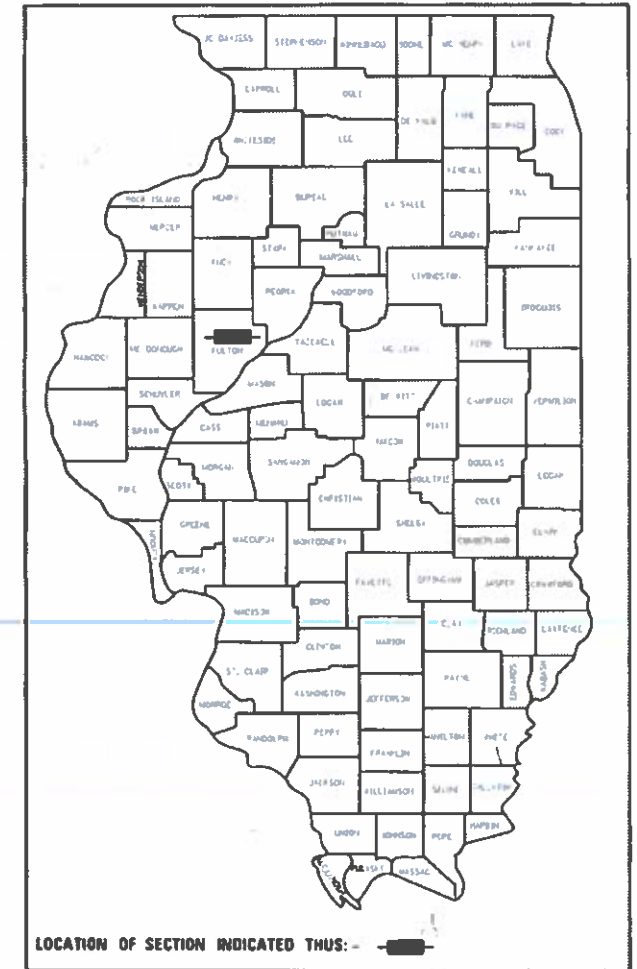
LIST OF HIGHWAY STANDARDS

- 630301-09 SHOULDER WIDENING FOR TYPE 1 (SPECIAL) GUARDRAIL TERMINALS
- 701006-05 OFF-RD OPERATIONS, 2L, 2W, 15' TO 24" FROM PAVEMENT EDGE
- 701201-05 LANE CLOSURE, 2L, 2W, DAY ONLY, FOR SPEEDS > 45 MPH
- 701301-04 LANE CLOSURE, 2L, 2W, SHORT TIME OPERATIONS
- 701901-08 TRAFFIC CONTROL DEVICES
- B.L.R. 27-1 TRAFFIC BARRIER TERMINAL, TYPE 5A

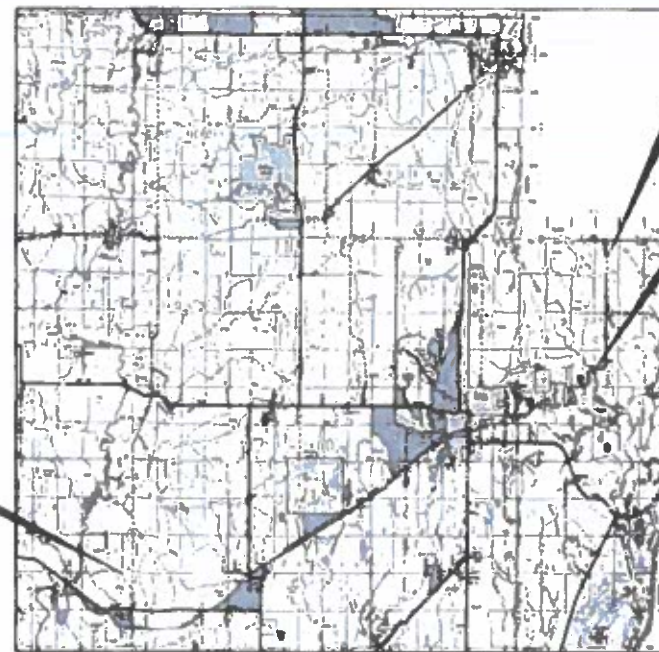
STATE OF ILLINOIS
DEPARTMENT OF TRANSPORTATION
DIVISION OF HIGHWAYS
PROPOSED
HIGHWAY PLANS

VARIOUS ROUTES
SECTION 20-00900-00-SP
PROJECT G3GR(410)
GUARDRAIL IMPROVEMENT (HSIP FUNDS)
FULTON COUNTY
HSIP NO. 201809110

F.A.S. RTE.	SECTION	COUNTY	TOTAL SHEETS	SHEET NO.
VAR	20 00900 00 SP	FULTON	23	1
		ILLINOIS 89799	CONTRACT NO.	



C-94-001-21



**IMPROVEMENT ALONG
COUNTY HIGHWAY 28**

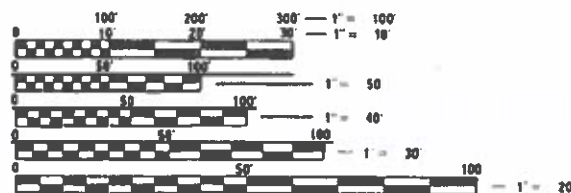
**IMPROVEMENT ALONG
COUNTY HIGHWAY 27**



LOCATION MAP
NOT TO SCALE

**IMPROVEMENT ALONG
COUNTY HIGHWAY 2**

SEE PAGES 2 AND 3 FOR LOCATION DETAILS



FULL SIZE PLANS HAVE BEEN PREPARED USING STANDARD ENGINEERING SCALES. REDUCED SIZED PLANS WILL NOT CONFORM TO STANDARD SCALES. IN MAKING MEASUREMENTS ON REDUCED PLANS, THE ABOVE SCALES MAY BE USED.

J.U.L.I.E.
 JOINT UTILITY LOCATION INFORMATION FOR EXCAVATION
 1-800-892-0123
 OR 811

PROJECT MANAGER: SHANE LARSON, P.E.
PROJECT ENGINEER: RYAN BRADLE, P.E.
CATALOG NO. 036035-00
CONTRACT NO. 89799

FUNCTIONAL CLASSIFICATION
RURAL MAJOR COLLECTOR
DESIGN SPEED = 50/55 MPH
PV = VAR% SU = VAR% MU = VAR%

APPROVED	<i>May 3rd</i>	20	21
	<i>Zat - Not</i>		
LOCAL AGENCY OFFICIAL			
PASSED	<i>05-06</i>	20	21
	<i>[Signature]</i>		
DISTRICT FOUR ENGINEER OF LOCAL ROADS & STREETS			
Releasing For Bid Based on Limited Review	<i>May 6</i>	20	21
	<i>[Signature]</i>		
REGION THREE ENGINEER			
STATE OF ILLINOIS DEPARTMENT OF TRANSPORTATION			

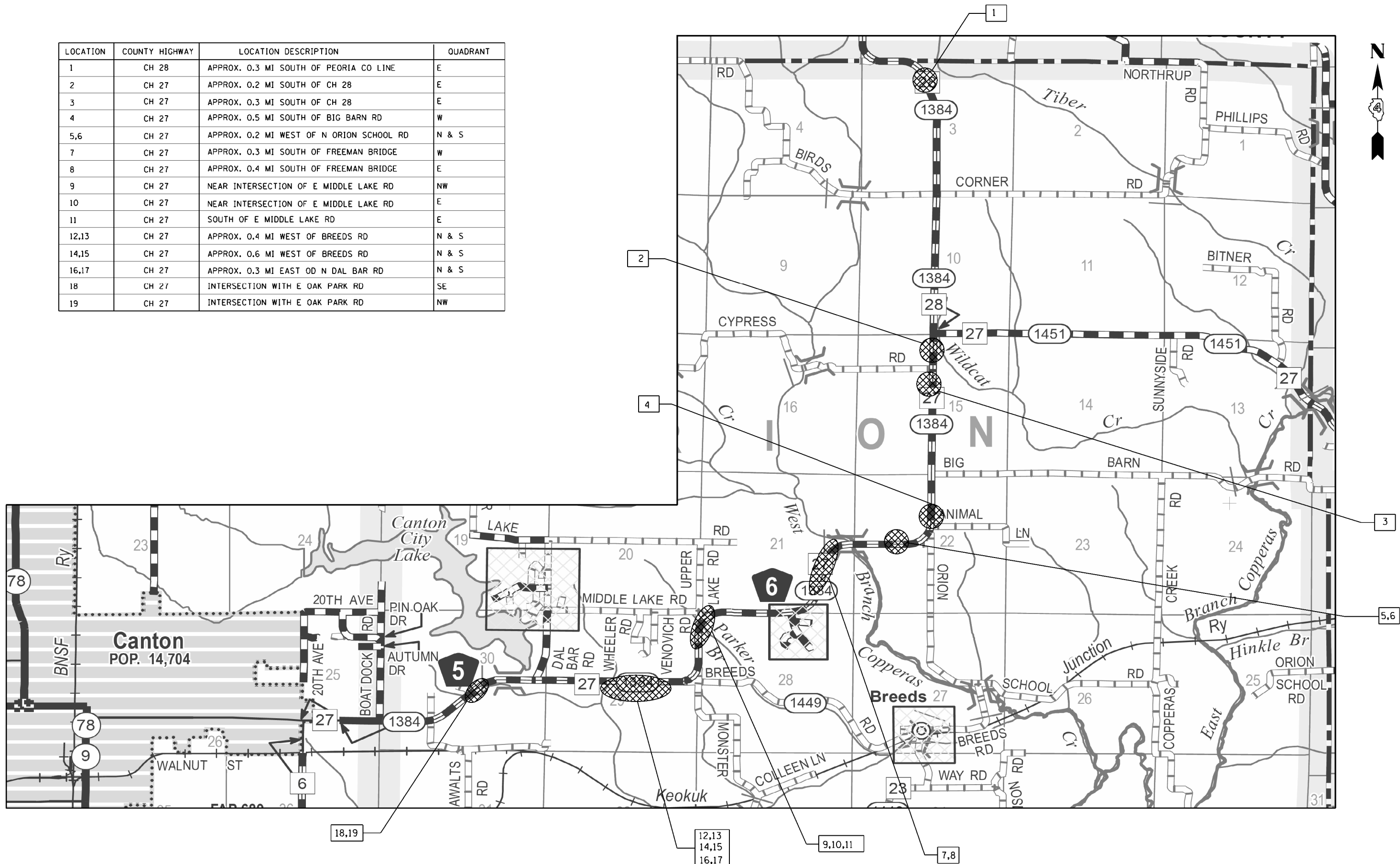


Hutchison Engineering, Inc.
 Jacksonville - Peoria
 Quad Cities - Shawnee
 Since 1945

SIGNATURE
 ENGINEER'S SEAL

**PRINTED BY THE AUTHORITY
OF THE STATE OF ILLINOIS**

LOCATION	COUNTY HIGHWAY	LOCATION DESCRIPTION	QUADRANT
1	CH 28	APPROX. 0.3 MI SOUTH OF PEORIA CO LINE	E
2	CH 27	APPROX. 0.2 MI SOUTH OF CH 28	E
3	CH 27	APPROX. 0.3 MI SOUTH OF CH 28	E
4	CH 27	APPROX. 0.5 MI SOUTH OF BIG BARN RD	W
5,6	CH 27	APPROX. 0.2 MI WEST OF N ORION SCHOOL RD	N & S
7	CH 27	APPROX. 0.3 MI SOUTH OF FREEMAN BRIDGE	W
8	CH 27	APPROX. 0.4 MI SOUTH OF FREEMAN BRIDGE	E
9	CH 27	NEAR INTERSECTION OF E MIDDLE LAKE RD	NW
10	CH 27	NEAR INTERSECTION OF E MIDDLE LAKE RD	E
11	CH 27	SOUTH OF E MIDDLE LAKE RD	E
12,13	CH 27	APPROX. 0.4 MI WEST OF BREEDS RD	N & S
14,15	CH 27	APPROX. 0.6 MI WEST OF BREEDS RD	N & S
16,17	CH 27	APPROX. 0.3 MI EAST OF N DAL BAR RD	N & S
18	CH 27	INTERSECTION WITH E OAK PARK RD	SE
19	CH 27	INTERSECTION WITH E OAK PARK RD	NW



MODEL: V14227 - HSP General PH LIL (Fulton City) CAD/CADD Sheets 4327-432-2-location.mxd
 FILE NAME: V14227 - HSP General PH LIL (Fulton City) CAD/CADD Sheets 4327-432-2-location.mxd

Hutchison Engineering, Inc.
 Jacksonville • Peoria • Quad Cities • Shorewood
 Since 1945

USER NAME = SMaharjan	DESIGNED - WSL	REVISED -
PLOT SCALE = 2,000' / in	DRAWN - SRH	REVISED -
DATE = 4/30/2021	CHECKED - WSL	REVISED -
	DATE - 11-25-20	REVISED -

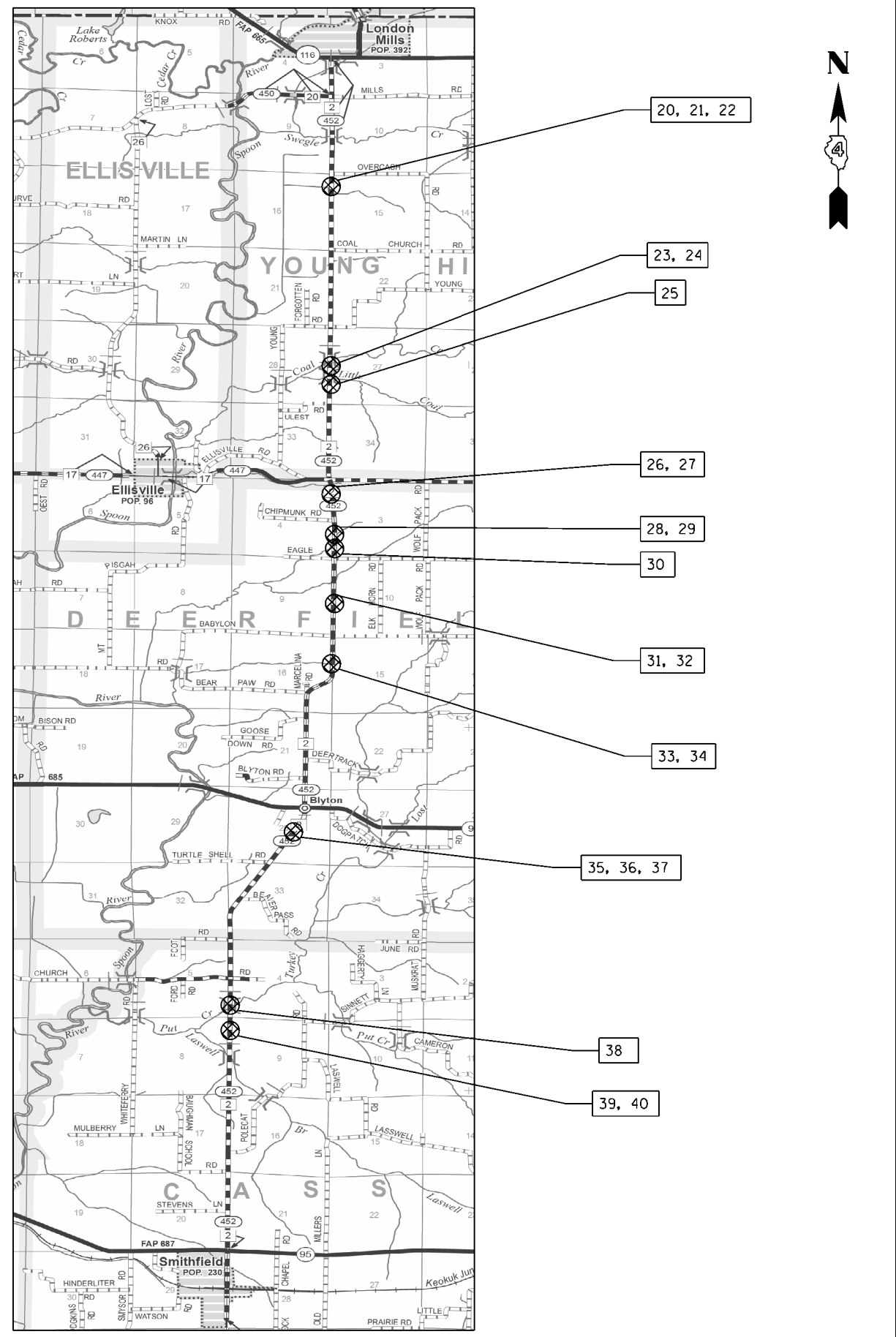
**FULTON COUNTY
 HIGHWAY DEPARTMENT**

OVERALL LOCATION MAP

SCALE: N/A SHEET 1 OF 1 SHEETS STA. N/A TO STA. N/A

F.A.S. RTE.	SECTION	COUNTY	TOTAL SHEETS	SHEET NO.
VAR	20-00900-00-5P	FULTON	23	2
CONTRACT NO. 89799				
ILLINOIS FED. AID PROJECT				

LOCATION	COUNTY HIGHWAY	LOCATION DESCRIPTION	QUADRANT
20	CH 2	APPROX. 0.5 MI SOUTH OF E OVERCASH RD	W
21	CH 2	APPROX. 0.5 MI SOUTH OF E OVERCASH RD	E
22	CH 2	APPROX. 0.6 MI SOUTH OF E OVERCASH RD	W
23	CH 2	APPROX. 0.6 MI SOUTH OF E YOUNG RD	W
24	CH 2	APPROX. 0.6 MI SOUTH OF E YOUNG RD	E
25	CH 2	APPROX. 0.1 MI NORTH OF E ULEST RD	W
26	CH 2	APPROX. 0.1 MI SOUTH OF CH 17	W
27	CH 2	APPROX. 0.1 MI SOUTH OF CH 17	E
28	CH 2	APPROX. 0.2 MI SOUTH OF E CHIPMUNK RD	W
29	CH 2	APPROX. 0.2 MI SOUTH OF E CHIPMUNK RD	E
30	CH 2	APPROX. 0.1 MI NORTH OF E EAGLE PASS RD	W
31	CH 2	APPROX. 0.5 MI NORTH OF E BABYLON RD	W
32	CH 2	APPROX. 0.5 MI NORTH OF E BABYLON RD	E
33	CH 2	APPROX. 0.4 MI SOUTH OF E BABYLON RD	W
34	CH 2	APPROX. 0.4 MI SOUTH OF E BABYLON RD	E
35	CH 2	APPROX. 0.4 MI SOUTH OF IL 9	W
36	CH 2	APPROX. 0.4 MI SOUTH OF IL 9	E
37	CH 2	APPROX. 0.6 MI SOUTH OF IL 9	E
38	CH 2	PUTT CREEK BRIDGE APPROX. 0.4 MI SOUTH OF E BUCKEYE CHURCH RD	NE, SW, NE, SE
39	CH 2	APPROX. 0.7 MI SOUTH OF E BUCKEYE CHURCH RD	W
40	CH 2	APPROX. 0.7 MI SOUTH OF E BUCKEYE CHURCH RD	W



MODEL: V:\4277 - HSP Gulerball PH LIL (Fulton Cty)\CADD\CADD Sheets\4277-411-3-Location.msxd.dgn
 FILE NAME: V:\4277 - HSP Gulerball PH LIL (Fulton Cty)\CADD\CADD Sheets\4277-411-3-Location.msxd.dgn



USER NAME = SMaharjan	DESIGNED - WSL	REVISED -
PLOT SCALE = 2,000' / in	DRAWN - SRH	REVISED -
PLOT DATE = 4/30/2021	CHECKED - WSL	REVISED -
	DATE - 11-25-20	REVISED -

**FULTON COUNTY
HIGHWAY DEPARTMENT**

OVERALL LOCATION MAP

SCALE: N/A SHEET 1 OF 1 SHEETS STA. N/A TO STA. N/A

F.A.S. RTE.	SECTION	COUNTY	TOTAL SHEETS	SHEET NO.
VAR	20-00900-00-5P	FULTON	23	3
CONTRACT NO. 89799				
ILLINOIS FED. AID PROJECT				

GENERAL NOTES

- ALL REFERENCES TO THE "DEPARTMENT" OR "ENGINEER" IN THE IDOT STANDARD SPECIFICATIONS SHALL ALSO INCLUDE THE FULTON COUNTY ENGINEER.
- FURNISHED EXCAVATION, AS SHOWN, IS FOR CONSTRUCTING THE PROPOSED SHOULDER WIDENING TRANSITION FOR TYPE 1 (SPECIAL) GUARDRAIL TERMINALS, AS NEEDED. QUANTITIES SHOWN ARE APPROXIMATE.
- REMOVED GUARDRAIL THAT IS NOT REPLACED ON THE SAME DAY MUST BE DELINEATED WITH LIGHTED BARRICADES.
- ALL QUANTITIES FOR GUARDRAIL REMOVAL INCLUDE THE REMOVAL OF THE NON COMPLIANT GUARDRAIL TERMINAL END SECTIONS.
- ALL QUANTITIES FOR PERIMETER EROSION BARRIER INCLUDE LENGTH ALONG PROPOSED SPBGR, PROPOSED GUARDRAIL TERMINALS AND EXCLUDES LENGTH ALONG THE RIPRAP.
- CLEARING AND GRUBBING SHALL NOT BE PAID FOR SEPERATELY BUT SHALL BE INCLUDED IN THE COST OF THE CONTRACT AS PER ARTICLE 201.
- ENVIRONMENTAL REVIEWS
PRIOR TO THE USE OF ANY PROPOSED BORROW AREAS, USE AREAS (TEMPORARY ACCESS ROADS, DETOURS, RUN-AROUNDS, ETC.) AND/OR WASTE AREAS, THE CONTRACTOR SHALL FILE THE REQUIRED ENVIRONMENTAL RESOURCE REQUEST SURVEYS ACCORDING TO SECTION 107.22 OF THE STANDARD SPECIFICATIONS. THESE SURVEYS ARE REQUIRED IN ORDER FOR THE DEPARTMENT TO CONDUCT CULTURAL AND BIOLOGICAL RESOURCE SURVEYS FOR THE PROPOSED SITE.

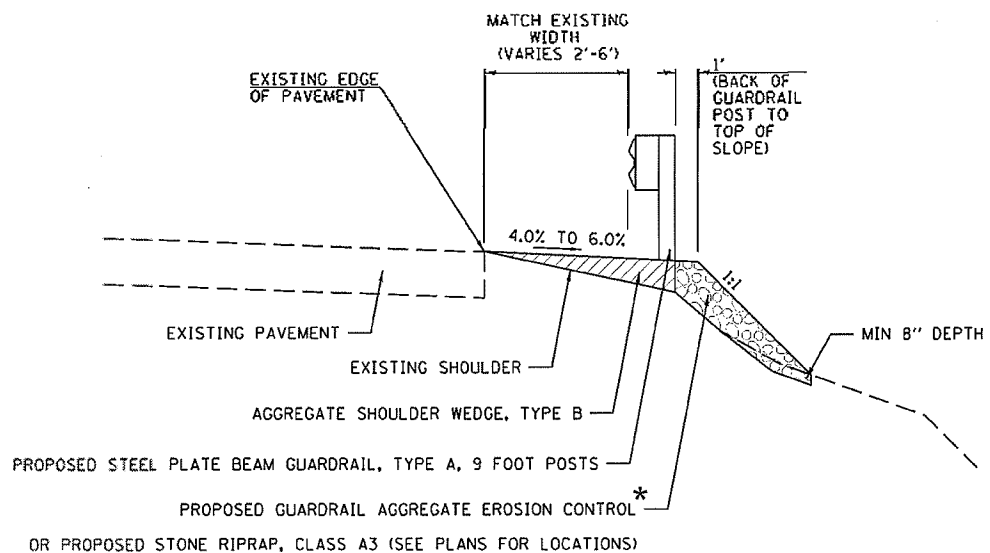
THE REQUIRED ENVIRONMENTAL RESOURCE DOCUMENTATION SHALL INCLUDE THE FOLLOWING:

- BDE FORM 2289 (CULTURAL AND NATURAL RESOURCES REVIEW OF BORROW AREAS)
- BDE FORM 2290 (WASTE/USE AREA REVIEW)
- A LOCATION MAP SHOWING THE SIZE LIMITS AND LOCATION OF THE USE AREA
- COLOR PHOTOGRAPHS DEPICTING THE USE AREA
- BORROW AREA ENTRY AGREEMENT FORM - D4 P10101

PRIOR TO ANY WASTE MATERIALS BEING REMOVED FROM THE CONSTRUCTION SITE THE REQUIRED ENVIRONMENTAL RESOURCE SURVEYS SHALL BE OBTAINED AND FILED BY THE CONTRACTOR. EXCESS WASTE PRODUCTS REMOVED FROM THE CONSTRUCTION SITE SHALL BE DISPOSED OF AS REQUIRED IN SECTION 202.03 OF THE STANDARD SPECIFICATIONS.

ANY PROTRUDING METAL BARS SHALL BE REMOVED PRIOR TO THE DISPOSAL OF BROKEN CONCRETE AT APPROVED DISPOSAL SITES.

PLEASE NOTE THAT A MINIMUM OF FOUR WEEKS SHALL BE ALLOWED FOR THE DISTRICT TO OBTAIN THE REQUIRED ENVIRONMENTAL CLEARANCES AND SIX WEEKS FOR THE REQUIRED BORROW SITE ENVIRONMENTAL CLEARANCES.



PROPOSED TYPICAL SECTION

OVERALL SUMMARY OF QUANTITIES					CONSTRUCTION CODE	
SPECIAL PROVISION (SP)	CODE NO.	DESCRIPTION	UNIT	TOTAL QUANTITY	90% HSIP	
					10% LOCAL ROADWAY	
					0021	
					RURAL	
Δ	20400800	FURNISHED EXCAVATION	CU YD	1020		1020
Δ	25000300	SEEDING, CLASS 3	ACRE	2		2
Δ	25000400	NITROGEN FERTILIZER NUTRIENT	POUND	171		171
Δ	25000500	PHOSPHORUS FERTILIZER NUTRIENT	POUND	171		171
Δ	25000600	POTASSIUM FERTILIZER NUTRIENT	POUND	171		171
Δ	25100115	MULCH, METHOD 2	ACRE	2		2
	28000250	TEMPORARY EROSION CONTROL SEEDING	POUND	190		190
Δ	28000400	PERIMETER EROSION BARRIER	FOOT	8356		8356
Δ	28100205	STONE RIPRAP, CLASS A3	TON	342		342
Δ SP	48102100	AGGREGATE WEDGE SHOULDER, TYPE B	TON	342		342
	63000003	STEEL PLATE BEAM GUARDRAIL, TYPE A, 9 FOOT POSTS	FOOT	4243		4243
	63100075	TRAFFIC BARRIER TERMINAL, TYPE 5A	EACH	1		1
	63100167	TRAFFIC BARRIER TERMINAL, TYPE 1(SPECIAL) TANGENT	EACH	82		82
	63200310	GUARDRAIL REMOVAL	FOOT	4484		4484
	67100100	MOBILIZATION	L SUM	1		1
	72501000	TERMINAL MARKER - DIRECT APPLIED	EACH	82		82
	78200005	GUARDRAIL REFLECTORS, TYPE A	EACH	267		267
SP	X6330900	VERTICAL ADJUSTMENT OF GUARDRAIL	FOOT	3157		3157
SP	X7010216	TRAFFIC CONTROL AND PROTECTION, (SPECIAL)	L SUM	1		1
Δ SP	Z0001002	GUARDRAIL AGGREGATE EROSION CONTROL	TON	558		558
SP	Z0013798	CONSTRUCTION LAYOUT	L SUM	1		1

Δ SPECIALTY ITEMS

NOTE

* GUARDRAIL AGGREGATE EROSION CONTROL & STONE RIPRAP, CLASS A3, AS SHOWN, IS FOR PLACING BEHIND GUARDRAIL POSTS FOR LOCATIONS WITH FRONT SLOPES 2:1 OR GREATER, OR AS DIRECTED BY THE ENGINEER. QUANTITIES AND LOCATIONS ON THE PLANS ARE APPROXIMATE. EXACT LOCATIONS SHALL BE VERIFIED BY THE ENGINEER.

** SOME LOCATIONS WILL NEED THE GUARDRAIL POST TO BE DRIVEN THROUGH EXISTING RIPRAP.

MODEL - 04/14/11
FILE - 04/14/11 - 1030 - Observed for I18 Fulton County Highway Department, Station 14+27.25 to 14+27.75, Station 50+00 to 50+05.00



USER NAME = SAHbenjan	DESIGNED - WSL	REVISED - 04-12-2021
	DRAWN -	REVISED -
PLOT SCALE = 2.000" = 1'	CHECKED - WSL	REVISED -
PLOT DATE = 4/30/2021	DATE - 11-25-20	REVISED -

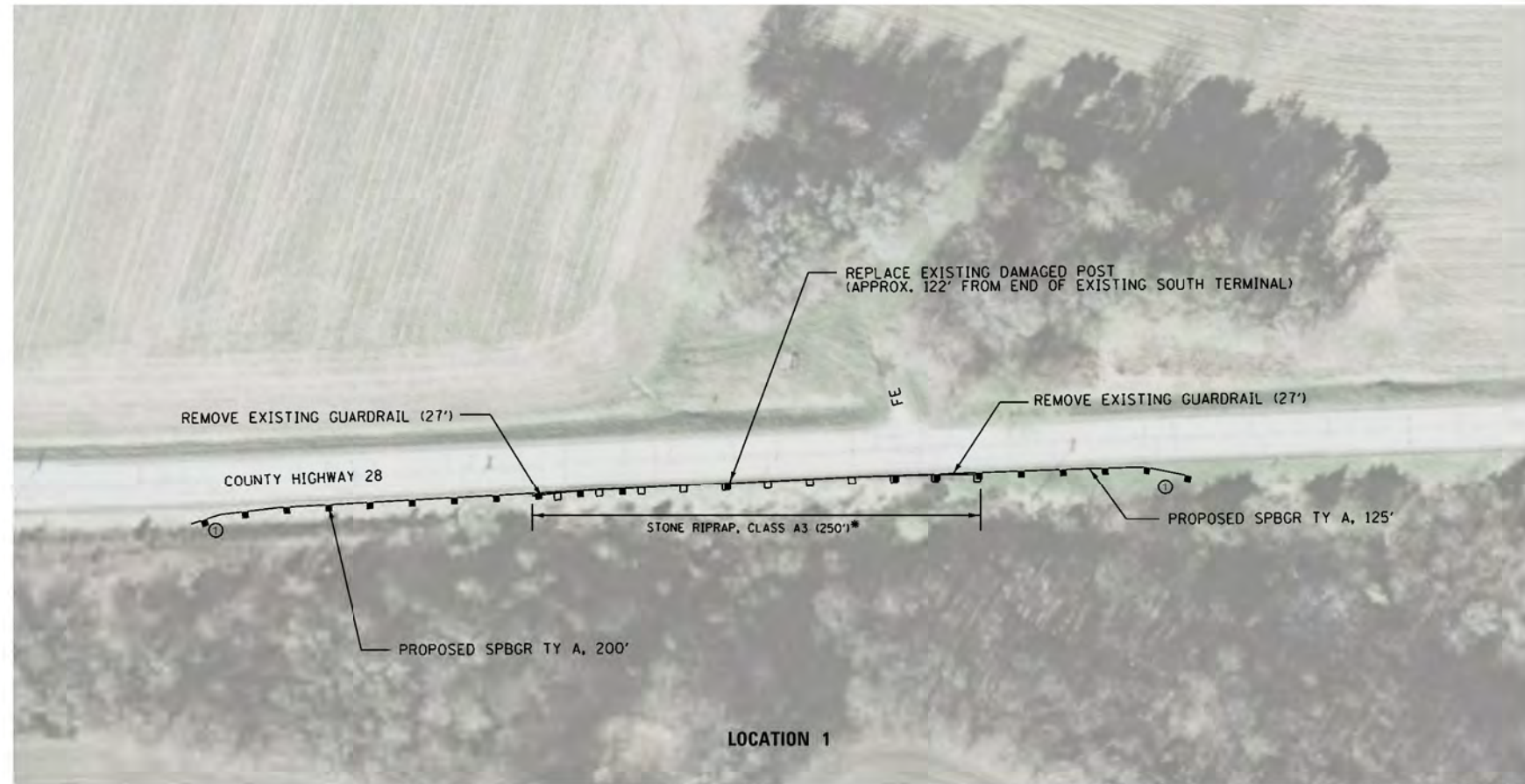
**FULTON COUNTY
HIGHWAY DEPARTMENT**

**GENERAL NOTES, SUMMARY OF QUANTITIES &
TYPICAL SECTION**

SCALE: N/A SHEET 1 OF 1 SHEETS STA. N/A TO STA. N/A

F.A.S RTE. VAR.	SECTION 20-00900-00-SP	COUNTY FULTON	TOTAL SHEETS 23	SHEET NO. 4
CONTRACT NO. 89799				
ILLINOIS FED. AID PROJECT				

LEGEND	
①	TRAFFIC BARRIER TERMINAL, TYPE 1 (SPECIAL) TANGENT
5A	TRAFFIC BARRIER TERMINAL, TYPE 5A



NOTE

* STONE RIPRAP, CLASS A3, AS SHOWN, IS FOR PLACING BEHIND GUARDRAIL POSTS FOR LOCATIONS WITH FRONT SLOPES 2:1 OR GREATER, OR AS DIRECTED BY THE ENGINEER.
 QUANTITIES AND LOCATIONS SHOWN ARE APPROXIMATE. EXACT LOCATIONS SHALL BE DETERMINED BY THE ENGINEER.

LOCATION 1				
SPECIAL PROVISION (SP)	CODE NO.	DESCRIPTION	UNIT	LOCATION 1 TOTAL QUANTITY
	20400800	FURNISHED EXCAVATION	CU YD	40
	25000300	SEEDING, CLASS 3	ACRE	0.09
	25000400	NITROGEN FERTILIZER NUTRIENT	POUND	7.67
	25000500	PHOSPHORUS FERTILIZER NUTRIENT	POUND	7.67
	25000600	POTASSIUM FERTILIZER NUTRIENT	POUND	7.67
	25100115	MULCH, METHOD 2	ACRE	0.09
	28000250	TEMPORARY EROSION CONTROL SEEDING	POUND	8.52
	28000400	PERIMETER EROSION BARRIER	FOOT	425
	28100205	STONE RIPRAP, CLASS A3	TON	28
SP	48102100	AGGREGATE WEDGE SHOULDER, TYPE B	TON	14
	63000003	STEEL PLATE BEAM GUARDRAIL, TYPE A, 9 FOOT POSTS	FOOT	325
	63100075	TRAFFIC BARRIER TERMINAL, TYPE 5A	EACH	-
	63100167	TRAFFIC BARRIER TERMINAL, TYPE 1(SPECIAL) TANGENT	EACH	2
	63200310	GUARDRAIL REMOVAL	FOOT	54
	72501000	TERMINAL MARKER - DIRECT APPLIED	EACH	2
	78200005	GUARDRAIL REFLECTORS, TYPE A	EACH	11

MODEL: V14271 - HSP Guardrail PH 1.0 (Fulton Cty) CAD/CADD Sheets/14271-ph-1-Location1.dgn
 FILE NAME: V14271 - HSP Guardrail PH 1.0 (Fulton Cty) CAD/CADD Sheets/14271-ph-1-Location1.dgn

Hutchison Engineering, Inc.
 Jacksonville • Peoria • Quad Cities • Shorewood
 Since 1945

USER NAME = SMaharjan	DESIGNED - WSL	REVISED -
PLOT SCALE = 100.0000' / in.	DRAWN - SRH	REVISED -
PLOT DATE = 4/30/2021	CHECKED - WSL	REVISED -
	DATE - 11-25-20	REVISED -

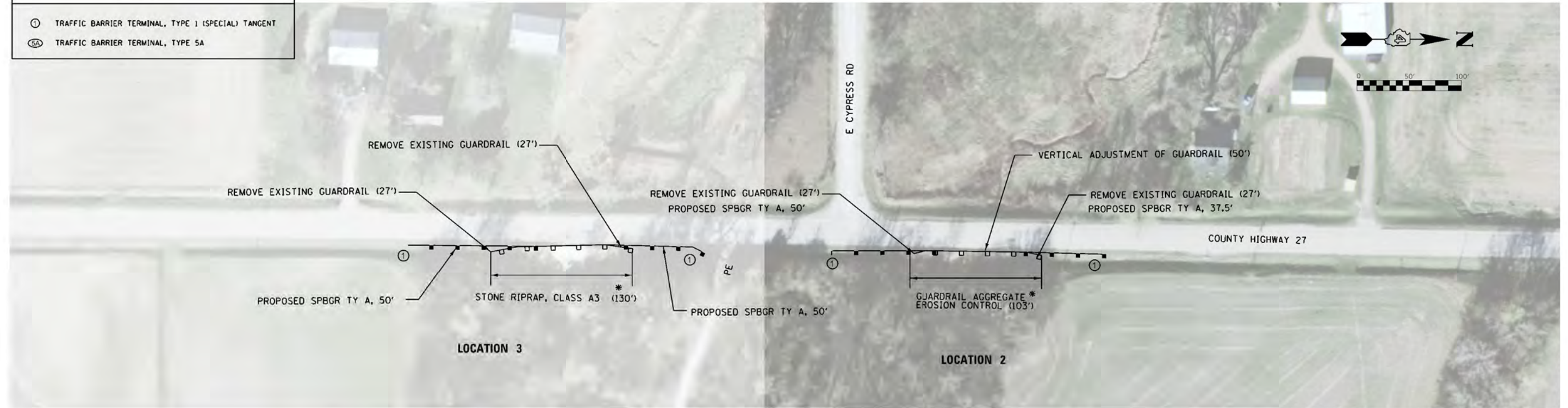
**FULTON COUNTY
 HIGHWAY DEPARTMENT**

**COUNTY HIGHWAY 28
 LOCATION 1 PLAN**

SCALE: N/A SHEET 1 OF 1 SHEETS STA. N/A TO STA. N/A

F.A.S. RTE.	SECTION	COUNTY	TOTAL SHEETS	SHEET NO.
VAR	20-00900-00-5P	FULTON	23	5
CONTRACT NO. 89799			ILLINOIS FED. AID PROJECT	

LEGEND	
①	TRAFFIC BARRIER TERMINAL, TYPE 1 (SPECIAL) TANGENT
⑤A	TRAFFIC BARRIER TERMINAL, TYPE 5A



NOTE

* STONE RIPRAP, CLASS A3 & GUARDRAIL AGGREGATE EROSION CONTROL, AS SHOWN, IS FOR PLACING BEHIND GUARDRAIL POSTS FOR LOCATIONS WITH FRONT SLOPES 2:1 OR GREATER, OR AS DIRECTED BY THE ENGINEER.
 QUANTITIES AND LOCATIONS SHOWN ARE APPROXIMATE. EXACT LOCATIONS SHALL BE VERIFIED BY THE ENGINEER.

LOCATION 2 & 3					
SPECIAL PROVISION (SP)	CODE NO.	DESCRIPTION	UNIT	LOCATION 2 TOTAL QUANTITY	LOCATION 3 TOTAL QUANTITY
	20400800	FURNISHED EXCAVATION	CU YD	40	40
	25000300	SEEDING, CLASS 3	ACRE	0.03	0.03
	25000400	NITROGEN FERTILIZER NUTRIENT	POUND	2.76	3.02
	25000500	PHOSPHORUS FERTILIZER NUTRIENT	POUND	2.76	3.02
	25000600	POTASSIUM FERTILIZER NUTRIENT	POUND	2.76	3.02
	25100115	MULCH, METHOD 2	ACRE	0.03	0.03
	28000250	TEMPORARY EROSION CONTROL SEEDING	POUND	3.06	3.35
	28000400	PERIMETER EROSION BARRIER	FOOT	187.5	200
	28100205	STONE RIPRAP, CLASS A3	TON	-	14
SP	48102100	AGGREGATE WEDGE SHOULDER, TYPE B	TON	5	6
	63000003	STEEL PLATE BEAM GUARDRAIL, TYPE A, 9 FOOT POSTS	FOOT	87.5	100
	63100167	TRAFFIC BARRIER TERMINAL, TYPE 1 (SPECIAL) TANGENT	EACH	2	2
	63200310	GUARDRAIL REMOVAL	FOOT	54	54
	72501000	TERMINAL MARKER - DIRECT APPLIED	EACH	2	2
	78200005	GUARDRAIL REFLECTORS, TYPE A	EACH	5	6
SP	X6330900	VERTICAL ADJUSTMENT OF GUARDRAIL	FOOT	50	-
SP	Z0001002	GUARDRAIL AGGREGATE EROSION CONTROL	TON	16	-

MODEL: V:\1271 - HSP Guardrail PH 118 (Fulton Cty)\CAD\CADD Sheets\1271-ph-118-Location 2,3.dwg
 FILE NAME: V:\1271 - HSP Guardrail PH 118 (Fulton Cty)\CAD\CADD Sheets\1271-ph-118-Location 2,3.dwg

Hutchison Engineering, Inc.
 Jacksonville • Peoria • Quad Cities • Shorewood
 Since 1945

USER NAME = SMaharjan	DESIGNED - WSL	REVISED -
PLOT SCALE = 100.0000' / in.	DRAWN - SRH	REVISED -
PLOT DATE = 4/30/2021	CHECKED - WSL	REVISED -
	DATE - 11-25-20	REVISED -

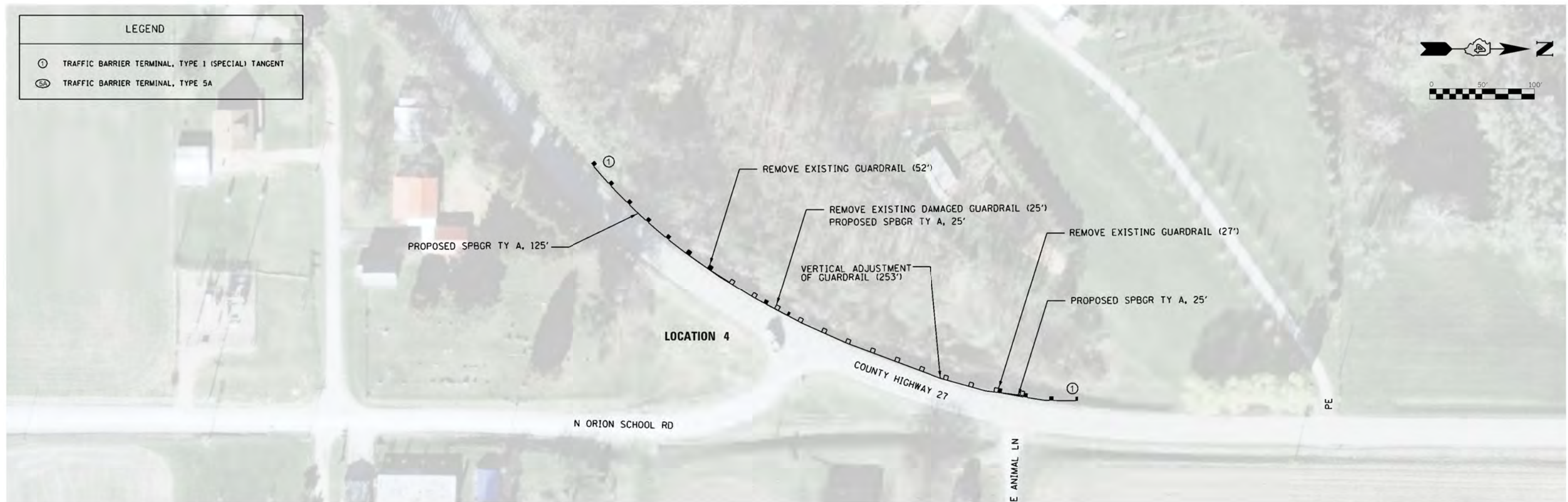
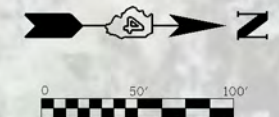
**FULTON COUNTY
 HIGHWAY DEPARTMENT**

**COUNTY HIGHWAY 27
 LOCATION 2,3 PLAN**

SCALE: N/A SHEET 1 OF 1 SHEETS STA. N/A TO STA. N/A

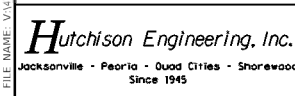
F.A.S. RTE.	SECTION	COUNTY	TOTAL SHEETS	SHEET NO.
VAR	20-00900-00-5P	FULTON	23	6
CONTRACT NO. 89799				
ILLINOIS FED. AID PROJECT				

LEGEND	
①	TRAFFIC BARRIER TERMINAL, TYPE 1 (SPECIAL) TANGENT
⑤A	TRAFFIC BARRIER TERMINAL, TYPE 5A



LOCATION 4				
SPECIAL PROVISION (SP)	CODE NO.	DESCRIPTION	UNIT	LOCATION 4 TOTAL QUANTITY
	20400800	FURNISHED EXCAVATION	CU YD	20
	25000300	SEEDING, CLASS 3	ACRE	0.12
	25000400	NITROGEN FERTILIZER NUTRIENT	POUND	10.87
	25000500	PHOSPHORUS FERTILIZER NUTRIENT	POUND	10.87
	25000600	POTASSIUM FERTILIZER NUTRIENT	POUND	10.87
	25100115	MULCH, METHOD 2	ACRE	0.12
	28000250	TEMPORARY EROSION CONTROL SEEDING	POUND	12.08
	28000400	PERIMETER EROSION BARRIER	FOOT	250
SP	48102100	AGGREGATE WEDGE SHOULDER, TYPE B	TON	12
	63000003	STEEL PLATE BEAM GUARDRAIL, TYPE A, 9 FOOT POSTS	FOOT	175
	63100167	TRAFFIC BARRIER TERMINAL, TYPE 1 (SPECIAL) TANGENT	EACH	2
	63200310	GUARDRAIL REMOVAL	FOOT	104
	72501000	TERMINAL MARKER - DIRECT APPLIED	EACH	2
	78200005	GUARDRAIL REFLECTORS, TYPE A	EACH	13
SP	X6330900	VERTICAL ADJUSTMENT OF GUARDRAIL	FOOT	253

MODEL: \\FULTON\GIS\Projects\2009\2009-00-SP\Guardrail\PH 118 (Fulton_City)\CADD\CADD_Sheets\1327-1\ht 7-Location 4.dgn
 FILE NAME: V13271 - HSP Guardrail PH 118 (Fulton_City)\CADD\CADD_Sheets\1327-1\ht 7-Location 4.dgn



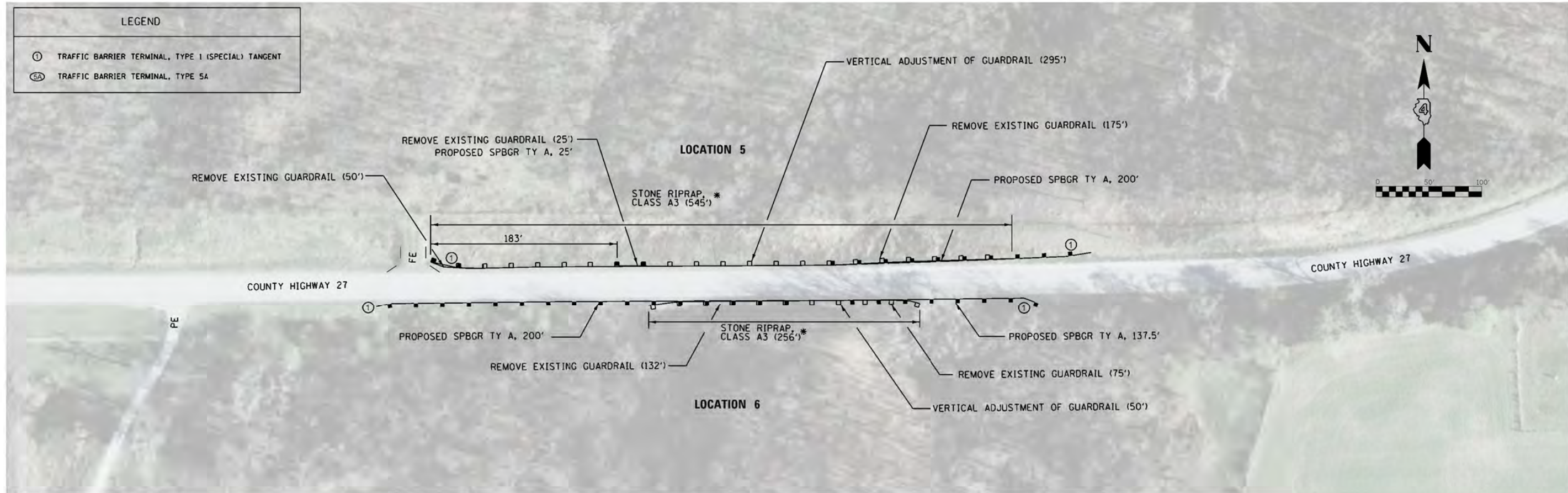
USER NAME = SMaharjan	DESIGNED - WSL	REVISED -
PLOT SCALE = 100.0000' / in.	DRAWN - SRH	REVISED -
PLOT DATE = 4/30/2021	CHECKED - WSL	REVISED -
	DATE - 11-25-20	REVISED -

**FULTON COUNTY
HIGHWAY DEPARTMENT**

**COUNTY HIGHWAY 27
LOCATION 4 PLAN**

SCALE: N/A SHEET 1 OF 1 SHEETS STA. N/A TO STA. N/A

F.A.S RTE.	SECTION	COUNTY	TOTAL SHEETS	SHEET NO.
VAR	20-00900-00-SP	FULTON	23	7
			CONTRACT NO. 89799	
ILLINOIS FED. AID PROJECT				



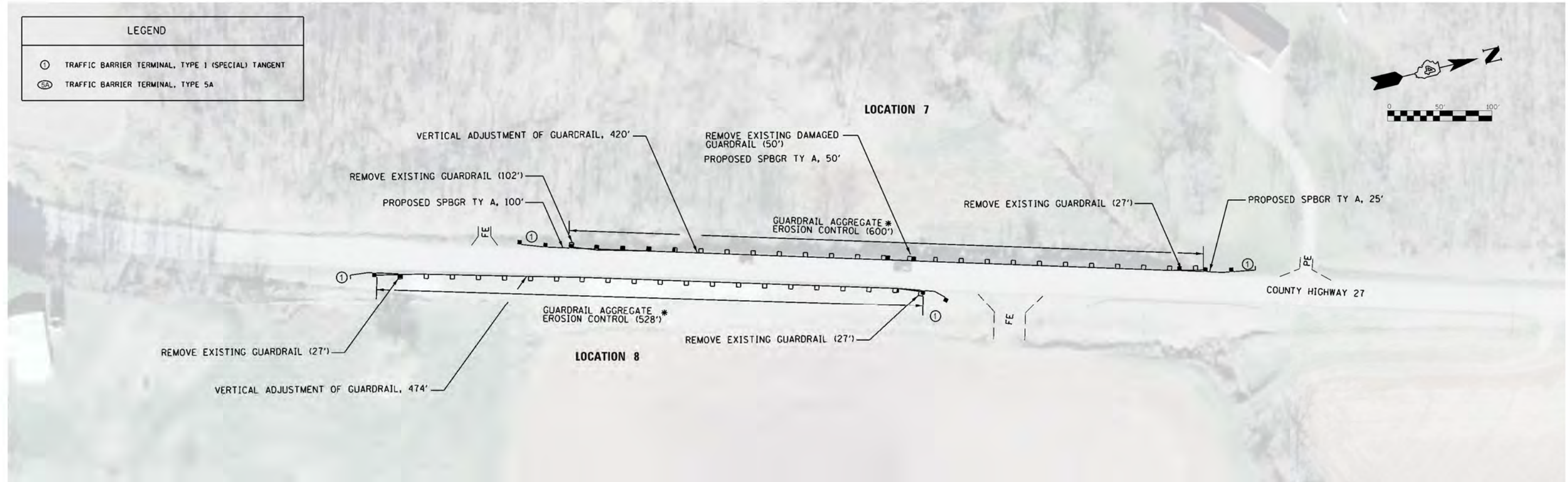
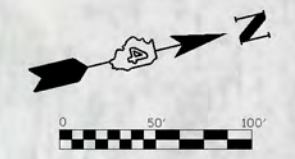
NOTE

* STONE RIPRAP, CLASS A3, AS SHOWN, IS FOR PLACING BEHIND GUARDRAIL POSTS FOR LOCATIONS WITH FRONT SLOPES 2:1 OR GREATER, OR AS DIRECTED BY THE ENGINEER.
 QUANTITIES AND LOCATIONS SHOWN ARE APPROXIMATE. EXACT LOCATIONS SHALL BE VERIFIED BY THE ENGINEER.

LOCATION 5 & 6					
SPECIAL PROVISION (SP)	CODE NO.	DESCRIPTION	UNIT	LOCATION 5 TOTAL QUANTITY	LOCATION 6 TOTAL QUANTITY
	20400800	FURNISHED EXCAVATION	CU YD	20	40
	25000300	SEEDING, CLASS 3	ACRE	0.02	0.05
	25000400	NITROGEN FERTILIZER NUTRIENT	POUND	1.55	4.76
	25000500	PHOSPHORUS FERTILIZER NUTRIENT	POUND	1.55	4.76
	25000600	POTASSIUM FERTILIZER NUTRIENT	POUND	1.55	4.76
	25100115	MULCH, METHOD 2	ACRE	0.02	0.05
	28000250	TEMPORARY EROSION CONTROL SEEDING	POUND	1.72	5.29
	28000400	PERIMETER EROSION BARRIER	FOOT	325	437.5
	28100205	STONE RIPRAP, CLASS A3	TON	61	28
SP	48102100	AGGREGATE WEDGE SHOULDER, TYPE B	TON	14	11
	63000003	STEEL PLATE BEAM GUARDRAIL, TYPE A, 9 FOOT POSTS	FOOT	225	337.5
	63100167	TRAFFIC BARRIER TERMINAL, TYPE 1(SPECIAL) TANGENT	EACH	2	2
	63200310	GUARDRAIL REMOVAL	FOOT	250	207
	72501000	TERMINAL MARKER - DIRECT APPLIED	EACH	2	2
	78200005	GUARDRAIL REFLECTORS, TYPE A	EACH	11	11
SP	X6330900	VERTICAL ADJUSTMENT OF GUARDRAIL	FOOT	295	50

MODEL: V14271 - HSP Guardrail PH 1.0 (Fulton Cty) CADDD-CADD Sheets14271.dwg, Location 5,6.dwg
 FILE NAME: V14271 - HSP Guardrail PH 1.0 (Fulton Cty) CADDD-CADD Sheets14271.dwg, Location 5,6.dwg

LEGEND	
①	TRAFFIC BARRIER TERMINAL, TYPE 1 (SPECIAL) TANGENT
⑤A	TRAFFIC BARRIER TERMINAL, TYPE 5A



NOTE

* GUARDRAIL AGGREGATE EROSION CONTROL, AS SHOWN, IS FOR PLACING BEHIND GUARDRAIL POSTS FOR LOCATIONS WITH FRONT SLOPES 2:1 OR GREATER, OR AS DIRECTED BY THE ENGINEER.
 QUANTITIES AND LOCATIONS SHOWN ARE APPROXIMATE. EXACT LOCATIONS SHALL BE VERIFIED BY THE ENGINEER.

LOCATION 7 & 8					
SPECIAL PROVISION (SP)	CODE NO.	DESCRIPTION	UNIT	LOCATION 7 TCTAL QUANTITY	LOCATION 8 TOTAL QUANTITY
	20400800	FURNISHED EXCAVATION	CU YD	20	20
	25000300	SEEDING, CLASS 3	ACRE	0.02	0.01
	25000400	NITROGEN FERTILIZER NUTRIENT	POUND	1.98	0.95
	25000500	PHOSPHORUS FERTILIZER NUTRIENT	POUND	1.98	0.95
	25000600	POTASSIUM FERTILIZER NUTRIENT	POUND	1.98	0.95
	25100115	MULCH, METHOD 2	ACRE	0.02	0.01
	28000250	TEMPORARY EROSION CONTROL SEEDING	POUND	2.2	1.06
	28000400	PERIMETER EROSION BARRIER	FOOT	275	100
SP	48102100	AGGREGATE WEDGE SHOULDER, TYPE B	TON	16	13
	63000003	STEEL PLATE BEAM GUARDRAIL, TYPE A, 9 FOOT POSTS	FOOT	175	-
	63100167	TRAFFIC BARRIER TERMINAL, TYPE 1 (SPECIAL) TANGENT	EACH	2	2
	63200310	GUARDRAIL REMOVAL	FOOT	179	54
	72501000	TERMINAL MARKER - DIRECT APPLIED	EACH	2	2
	78200005	GUARDRAIL REFLECTORS, TYPE A	EACH	12	9
SP	X6330900	VERTICAL ADJUSTMENT OF GUARDRAIL	FOOT	420	474
SP	Z0001002	GUARDRAIL AGGREGATE EROSION CONTROL	TON	91	80

M:\CADD\2021\HSP Guardrail PH 118 (Fulton Co.)\CADD\CADD Sheets\13271-1-11-9-Location 7 & 8.dwg
 FILE NAME: V:\13271 - HSP Guardrail PH 118 (Fulton Co.)\CADD\CADD Sheets\13271-1-11-9-Location 7 & 8.dwg



USER NAME = SMaharjan	DESIGNED - WSL	REVISED -
PLOT SCALE = 100.0000" / in.	DRAWN - SRH	REVISED -
PLOT DATE = 4/30/2021	CHECKED - WSL	REVISED -
	DATE - 11-25-20	REVISED -

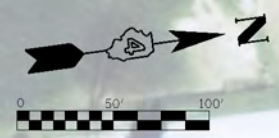
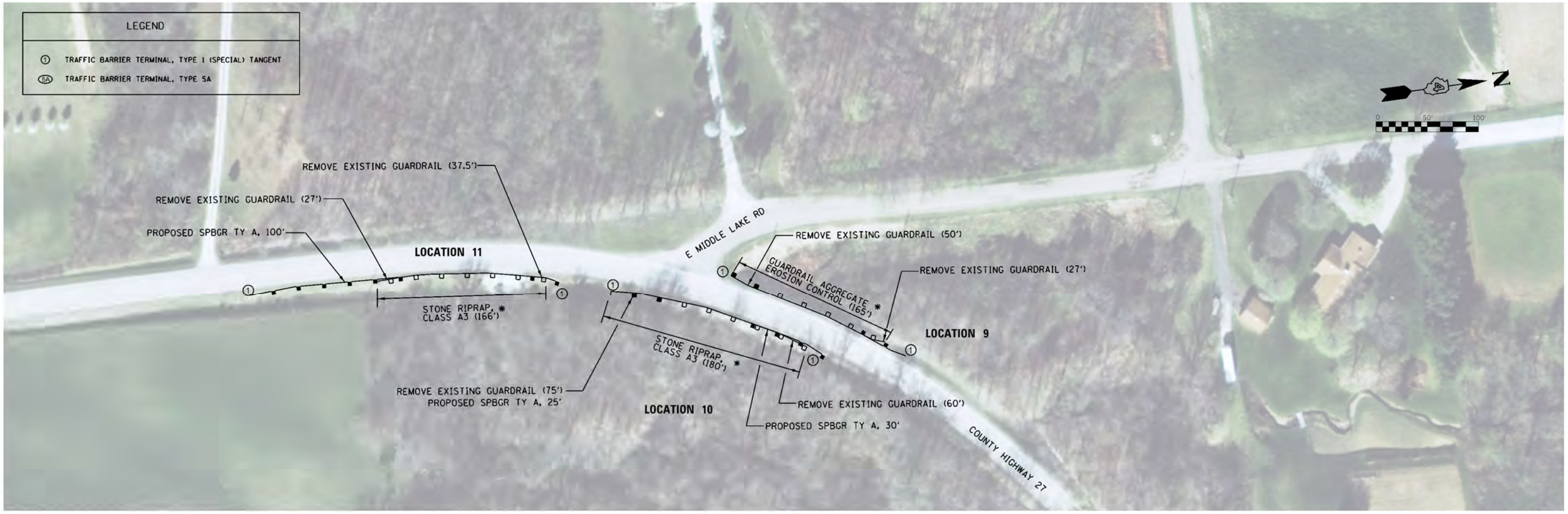
**FULTON COUNTY
HIGHWAY DEPARTMENT**

**COUNTY HIGHWAY 27
LOCATION 7 & 8 PLAN**

SCALE: N/A SHEET 1 OF 1 SHEETS STA. N/A TO STA. N/A

F.A.S. RTE.	SECTION	COUNTY	TOTAL SHEETS	SHEET NO.
VAR	20-00900-00-5P	FULTON	23	9
CONTRACT NO. 89799			ILLINOIS FED. AID PROJECT	

LEGEND	
①	TRAFFIC BARRIER TERMINAL, TYPE 1 (SPECIAL) TANGENT
⑤A	TRAFFIC BARRIER TERMINAL, TYPE 5A



NOTE

* STONE RIPRAP, CLASS A3, & GUARDRAIL AGGREGARE EROSION CONTROL AS SHOWN, IS FOR PLACING BEHIND GUARDRAIL POSTS FOR LOCATIONS WITH FRONT SLOPES 2:1 OR GREATER, OR AS DIRECTED BY THE ENGINEER.
 QUANTITIES AND LOCATIONS SHOWN ARE APPROXIMATE. EXACT LOCATIONS SHALL BE VERIFIED BY THE ENGINEER.

LOCATION 9, 10 & 11						
SPECIAL PROVISION (SP)	CODE NO.	DESCRIPTION	UNIT	LOCATION 9 TCTAL QUANTITY	LOCATION 10 TOTAL QUANTITY	LOCATION 11 TOTAL QUANTITY
	20400800	FURNISHED EXCAVATION	CU YD	-	-	20
	25000300	SEEDING, CLASS 3	ACRE	0.01	0.01	0.03
	25000400	NITROGEN FERTILIZER NUTRIENT	POUND	0.48	0.41	2.80
	25000500	PHOSPHORUS FERTILIZER NUTRIENT	POUND	0.48	0.41	2.80
	25000600	POTASSIUM FERTILIZER NUTRIENT	POUND	0.48	0.41	2.80
	25100115	MULCH, METHOD 2	ACRE	0.01	0.01	0.03
	28000250	TEMPORARY EROSION CONTROL SEEDING	POUND	0.53	0.46	3.11
	28000400	PERIMETER EROSION BARRIER	FOOT	100	155	200
	28100205	STONE RIPRAP, CLASS A3	TON	-	20	18
SP	48102100	AGGREGATE WEDGE SHOULDER, TYPE B	TON	4	5	7
	63000003	STEEL PLATE BEAM GUARDRAIL, TYPE A, 9 FOOT POSTS	FOOT	-	55	100
	63100167	TRAFFIC BARRIER TERMINAL, TYPE 1 (SPECIAL) TANGENT	EACH	2	2	2
	63200310	GUARDRAIL REMOVAL	FOOT	77	135	64.5
	72501000	TERMINAL MARKER - DIRECT APPLIED	EACH	2	2	2
	78200005	GUARDRAIL REFLECTORS, TYPE A	EACH	3	3	5
SP	Z0001002	GUARDRAIL AGGREGATE EROSION CONTROL	TON	25	-	-

M:\CADD\2021\21-0000\21-0000-00-SP\Guardrail PH 118 (Fulton County)\CADD\CADD Sheets\21-0000-00-SP\Location 9, 10, 11.dgn
 FILE NAME: V:\2021 - HSP\Guardrail PH 118 (Fulton County)\CADD\CADD Sheets\21-0000-00-SP\Location 9, 10, 11.dgn



USER NAME = SMaharjan	DESIGNED - WSL	REVISED -
PLOT SCALE = 100.0000' / in.	DRAWN - SRH	REVISED -
PLOT DATE = 4/30/2021	CHECKED - WSL	REVISED -
	DATE - 11-25-20	REVISED -

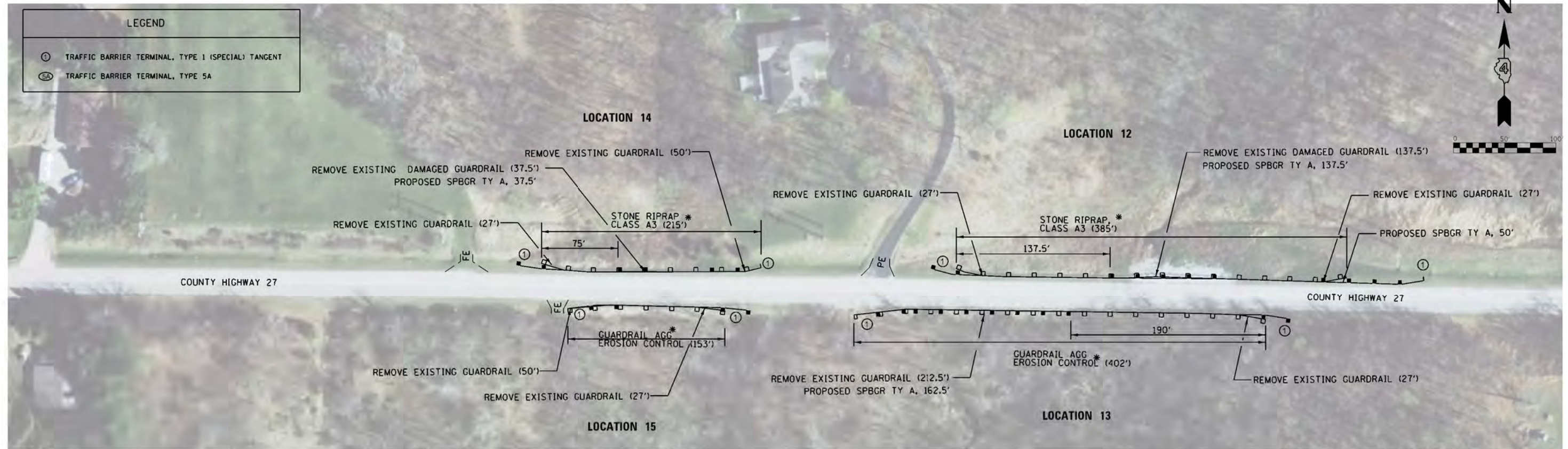
**FULTON COUNTY
HIGHWAY DEPARTMENT**

**COUNTY HIGHWAY 27
LOCATION 9, 10, 11 PLAN**

SCALE: N/A SHEET 1 OF 1 SHEETS STA. N/A TO STA. N/A

F.A.S RTE.	SECTION	COUNTY	TOTAL SHEETS	SHEET NO.
VAR	20-00900-00-5P	FULTON	23	10
CONTRACT NO. 89799				
ILLINOIS FED. AID PROJECT				

LEGEND	
①	TRAFFIC BARRIER TERMINAL, TYPE 1 (SPECIAL) TANGENT
⑤A	TRAFFIC BARRIER TERMINAL, TYPE 5A



NOTE

* STONE RIPRAP, CLASS A3, & GUARDRAIL AGG EROSION CONTROL AS SHOWN, IS FOR PLACING BEHIND GUARDRAIL POSTS FOR LOCATIONS WITH FRONT SLOPES 2:1 OR GREATER, OR AS DIRECTED BY THE ENGINEER.

QUANTITIES AND LOCATIONS SHOWN ARE APPROXIMATE. EXACT LOCATIONS SHALL BE VERIFIED BY THE ENGINEER.

LOCATION 12, 13, 14 & 15							
SPECIAL PROVISION (SP)	CODE NO.	DESCRIPTION	UNIT	LOCATION 12 TOTAL QUANTITY	LOCATION 13 TOTAL QUANTITY	LOCATION 14 TOTAL QUANTITY	LOCATION 15 TOTAL QUANTITY
	20400800	FURNISHED EXCAVATION	CU YD	20	20	-	-
	25000300	SEEDING, CLASS 3	ACRE	0.02	0.01	0.01	0.01
	25000400	NITROGEN FERTILIZER NUTRIENT	POUND	1.98	0.48	0.48	0.48
	25000500	PHOSPHORUS FERTILIZER NUTRIENT	POUND	1.98	0.48	0.48	0.48
	25000600	POTASSIUM FERTILIZER NUTRIENT	POUND	1.98	0.48	0.48	0.48
	25100115	MULCH, METHOD 2	ACRE	0.02	0.01	0.01	0.01
	28000250	TEMPORARY EROSION CONTROL SEEDING	POUND	2.2	0.53	0.53	0.53
	28000400	PERIMETER EROSION BARRIER	FOOT	287.5	262.5	137.5	100
	28100205	STONE RIPRAP, CLASS A3	TON	43	-	24	-
SP	48102100	AGGREGATE WEDGE SHOULDER, TYPE B	TON	11	10	5	4
	63000003	STEEL PLATE BEAM GUARDRAIL, TYPE A, 9 FOOT POSTS	FOOT	187.5	162.5	37.5	-
	63100167	TRAFFIC BARRIER TERMINAL, TYPE 1(SPECIAL) TANGENT	EACH	2	2	2	2
	63200310	GUARDRAIL REMOVAL	FOOT	191.5	239.5	114.5	77
	72501000	TERMINAL MARKER - DIRECT APPLIED	EACH	2	2	2	2
	78200005	GUARDRAIL REFLECTORS, TYPE A	EACH	8	7	4	2
SP	Z000102	GUARDRAIL AGGREGATE EROSION CONTROL	TON	-	61	-	23

MODEL: V14227 - HSR Guardrail PH 1.0 (Fullon_City)CADDDCAD00_Sheets1327.dwg 11 - Location 12, 13, 14, 15.dwg
 FILE NAME: V14227 - HSR Guardrail PH 1.0 (Fullon_City)CADDDCAD00_Sheets1327.dwg 11 - Location 12, 13, 14, 15.dwg

Hutchison Engineering, Inc.
 Jacksonville • Peoria • Quad Cities • Shorewood
 Since 1945

USER NAME = SMaharjan	DESIGNED - WSL	REVISED -
PLOT SCALE = 100.0000' / in.	DRAWN - SRH	REVISED -
PLOT DATE = 4/30/2021	CHECKED - WSL	REVISED -
	DATE - 11-25-20	REVISED -

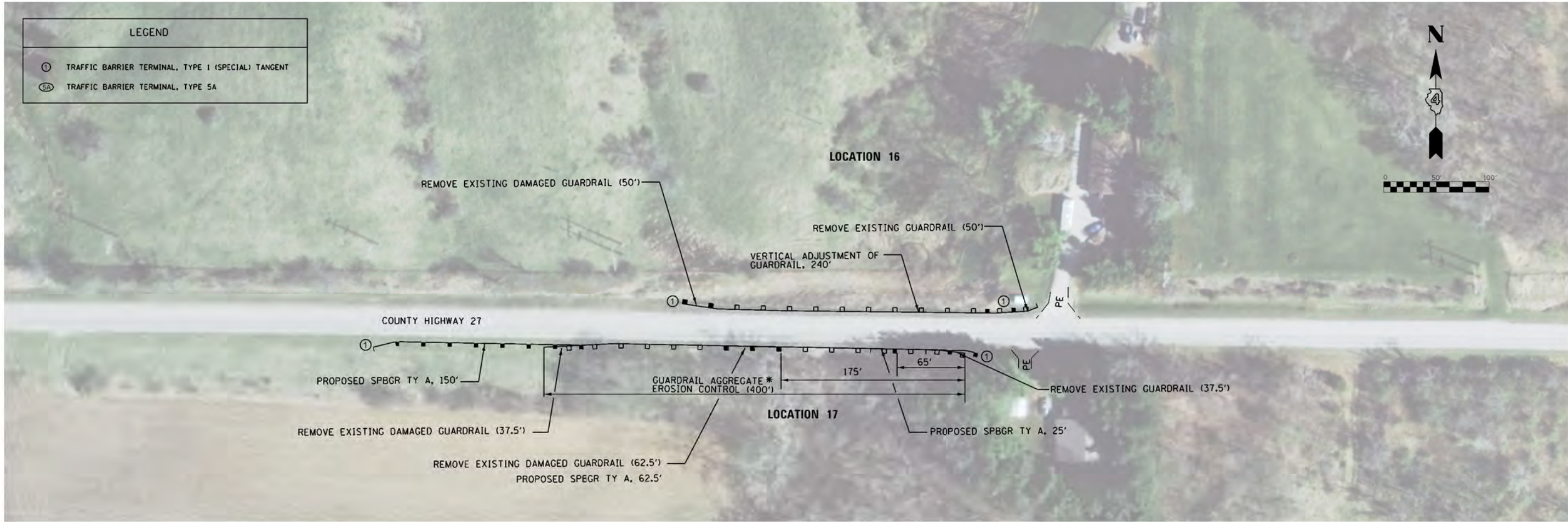
**FULTON COUNTY
HIGHWAY DEPARTMENT**

**COUNTY HIGHWAY 27
LOCATION 12, 13, 14 & 15 PLAN**

SCALE: N/A SHEET 1 OF 1 SHEETS STA. N/A TO STA. N/A

F.A.S. RTE.	SECTION	COUNTY	TOTAL SHEETS	SHEET NO.
VAR	20-00900-00-5P	FULTON	23	11
CONTRACT NO. 89799			ILLINOIS FED. AID PROJECT	

LEGEND	
①	TRAFFIC BARRIER TERMINAL, TYPE 1 (SPECIAL) TANGENT
⑤A	TRAFFIC BARRIER TERMINAL, TYPE 5A



NOTE

* GUARDRAIL AGG EROSION CONTROL, AS SHOWN, IS FOR PLACING BEHIND GUARDRAIL POSTS FOR LOCATIONS WITH FRONT SLOPES 2:1 OR GREATER, OR AS DIRECTED BY THE ENGINEER. QUANTITIES AND LOCATIONS SHOWN ARE APPROXIMATE. EXACT LOCATIONS SHALL BE VERIFIED BY THE ENGINEER.

LOCATION 16 & 17						
SPECIAL PROVISION (SP)	CODE NO.	DESCRIPTION	UNIT	LOCATION 16 TOTAL QUANTITY	LOCATION 17 TOTAL QUANTITY	
	20400800	FURNISHED EXCAVATION	CU YD	-	20	
	25000300	SEEDING, CLASS 3	ACRE	0.08	0.05	
	25000400	NITROGEN FERTILIZER NUTRIENT	POUND	7.02	4.13	
	25000500	PHOSPHORUS FERTILIZER NUTRIENT	POUND	7.02	4.13	
	25000600	POTASSIUM FERTILIZER NUTRIENT	POUND	7.02	4.13	
	25100115	MULCH, METHOD 2	ACRE	0.08	0.05	
	28000250	TEMPORARY EROSION CONTROL SEEDING	POUND	7.81	4.59	
	28000400	PERIMETER EROSION BARRIER	FOOT	100	337.5	
SP	48102100	AGGREGATE WEDGE SHOULDER, TYPE B	TON	8	14	
	63000003	STEEL PLATE BEAM GUARDRAIL, TYPE A, 9 FOOT POSTS	FOOT	-	237.5	
	63100167	TRAFFIC BARRIER TERMINAL, TYPE 1 (SPECIAL) TANGENT	EACH	2	2	
	63200310	GUARDRAIL REMOVAL	FOOT	100	137.5	
	72501000	TERMINAL MARKER - DIRECT APPLIED	EACH	2	2	
	78200005	GUARDRAIL REFLECTORS, TYPE A	EACH	5	10	
SP	X6330900	VERTICAL ADJUSTMENT OF GUARDRAIL	FOOT	240	-	
SP	Z0001002	GUARDRAIL AGGREGATE EROSION CONTROL	TON	-	61	

MODEL: V:\12271 - HSR Guardrail PH 118 (Fulton Co.)\CAD\CADD Sheets\12271-ph-12-location 16, 17.dgn
 FILE NAME: V:\12271 - HSR Guardrail PH 118 (Fulton Co.)\CAD\CADD Sheets\12271-ph-12-location 16, 17.dgn

Hutchison Engineering, Inc.
 Jacksonville • Peoria • Quad Cities • Shorewood
 Since 1945

USER NAME = SMaharjan	DESIGNED - WSL	REVISED -
PLOT SCALE = 100.0000' / in.	DRAWN - SRH	REVISED -
PLOT DATE = 4/30/2021	CHECKED - WSL	REVISED -
	DATE - 11-25-20	REVISED -

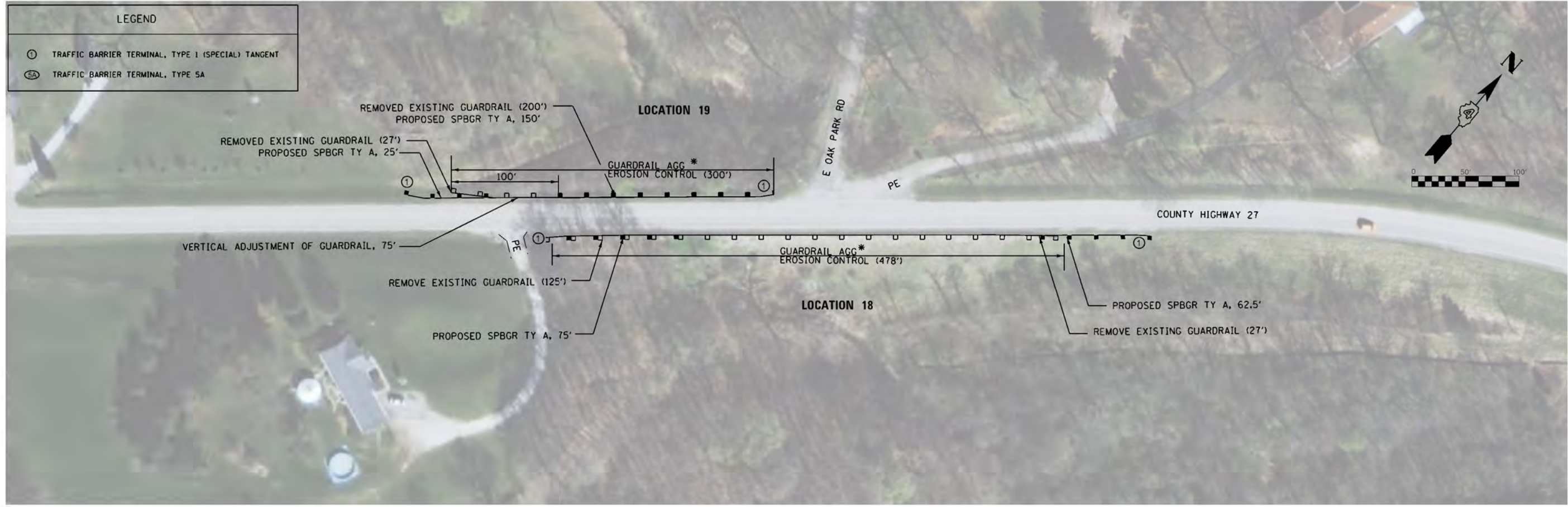
**FULTON COUNTY
 HIGHWAY DEPARTMENT**

**COUNTY HIGHWAY 27
 LOCATION 16, 17 PLAN**

SCALE: N/A SHEET 1 OF 1 SHEETS STA. N/A TO STA. N/A

F.A.S. RTE.	SECTION	COUNTY	TOTAL SHEETS	SHEET NO.
VAR	20-00900-00-5P	FULTON	23	12
CONTRACT NO. 89799				
ILLINOIS FED. AID PROJECT				

LEGEND	
①	TRAFFIC BARRIER TERMINAL, TYPE 1 (SPECIAL) TANGENT
⑤A	TRAFFIC BARRIER TERMINAL, TYPE 5A



NOTE

* GUARDRAIL AGG EROSION CONTROL, AS SHOWN, IS FOR PLACING BEHIND GUARDRAIL POSTS FOR LOCATIONS WITH FRONT SLOPES 2:1 OR GREATER, OR AS DIRECTED BY THE ENGINEER.
 QUANTITIES AND LOCATIONS SHOWN ARE APPROXIMATE. EXACT LOCATIONS SHALL BE VERIFIED BY THE ENGINEERS.

LOCATION 18 & 19						
SPECIAL PROVISION (SP)	CODE NO.	DESCRIPTION	UNIT	LOCATION 18 TOTAL QUANTITY	LOCATION 19 TOTAL QUANTITY	
	20400800	FURNISHED EXCAVATION	CU YD	20	20	
	25000300	SEEDING, CLASS 3	ACRE	0.02	0.01	
	25000400	NITROGEN FERTILIZER NUTRIENT	POUND	1.77	0.99	
	25000500	PHOSPHORUS FERTILIZER NUTRIENT	POUND	1.77	0.99	
	25000600	POTASSIUM FERTILIZER NUTRIENT	POUND	1.77	0.99	
	25100115	MULCH, METHOD 2	ACRE	0.02	0.01	
	28000250	TEMPORARY EROSION CONTROL SEEDING	POUND	1.96	1.10	
	28000400	PERIMETER EROSION BARRIER	FOOT	237.5	212.5	
SP	48102100	AGGREGATE WEDGE SHOULDER, TYPE B	TON	13	8	
	63000003	STEEL PLATE BEAM GUARDRAIL, TYPE A, 9 FOOT POSTS	FOOT	137.5	175	
	63100167	TRAFFIC BARRIER TERMINAL, TYPE 1(SPECIAL) TANGENT	EACH	2	2	
	63200310	GUARDRAIL REMOVAL	FOOT	152	227	
	72501000	TERMINAL MARKER - DIRECT APPLIED	EACH	2	2	
	78200005	GUARDRAIL REFLECTORS, TYPE A	EACH	10	6	
SP	X6330900	VERTICAL ADJUSTMENT OF GUARDRAIL	FOOT	-	75	
SP	Z0001002	GUARDRAIL AGGREGATE EROSION CONTROL	TON	73	46	

MODEL: V14227 - HSR Guardrail PH 118 (Fulton Cty) CADDDCADDD Sheets14227.dwg 13 Location 18 18.dwg
 FILE NAME: V14227 - HSR Guardrail PH 118 (Fulton Cty) CADDDCADDD Sheets14227.dwg 13 Location 18 18.dwg



USER NAME = SMaharjan	DESIGNED - WSL	REVISED -
PLOT SCALE = 100.0000' / in.	DRAWN - SRH	REVISED -
PLOT DATE = 4/30/2021	CHECKED - WSL	REVISED -
	DATE - 11-25-20	REVISED -

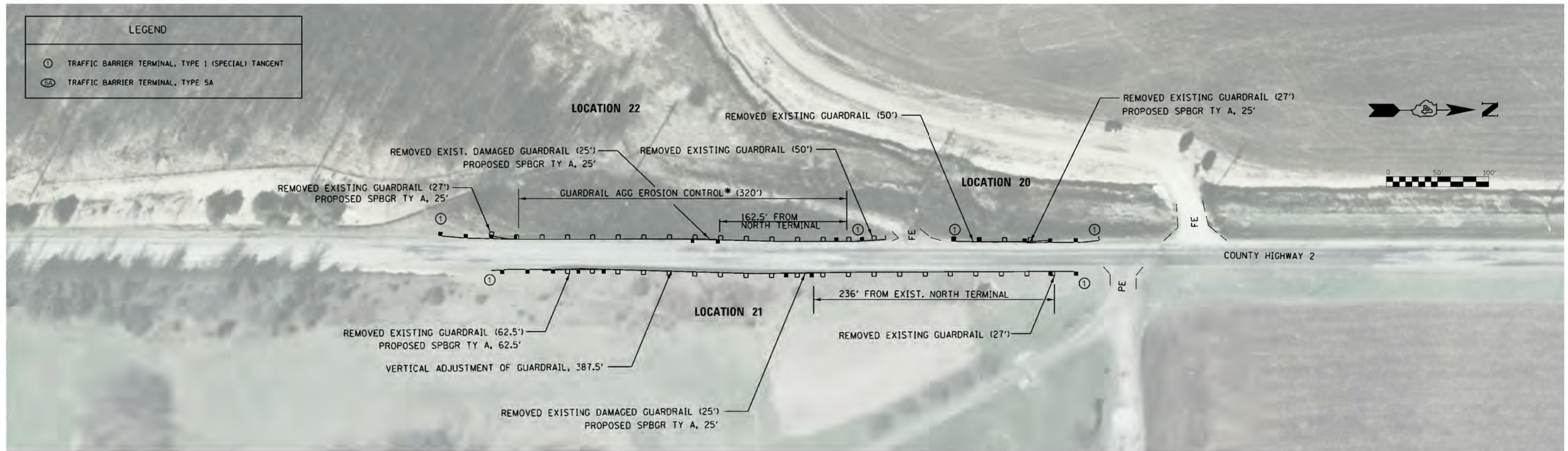
**FULTON COUNTY
HIGHWAY DEPARTMENT**

**COUNTY HIGHWAY 27
LOCATION 18, 19 PLAN**

SCALE: N/A SHEET 1 OF 1 SHEETS STA. N/A TO STA. N/A

F.A.S. RTE.	SECTION	COUNTY	TOTAL SHEETS	SHEET NO.
VAR	20-00900-00-5P	FULTON	23	13
CONTRACT NO. 89799				
ILLINOIS FED. AID PROJECT				

LEGEND	
①	TRAFFIC BARRIER TERMINAL, TYPE 1 (SPECIAL) TANGENT
5A	TRAFFIC BARRIER TERMINAL, TYPE 5A

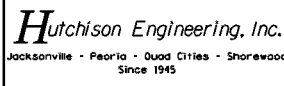


NOTE

* GUARDRAIL AGG EROSION CONTROL, AS SHOWN, IS FOR PLACING BEHIND GUARDRAIL POSTS FOR LOCATIONS WITH FRONT SLOPES 2:1 OR GREATER, OR AS DIRECTED BY THE ENGINEER.
 QUANTITIES AND LOCATIONS SHOWN ARE APPROXIMATE. EXACT LOCATIONS SHALL BE VERIFIED BY THE ENGINEER.

LOCATION 20, 21 & 22						
SPECIAL PROVISION (SP)	CODE NO.	DESCRIPTION	UNIT	LOCATION 20 TOTAL QUANTITY	LOCATION 21 TOTAL QUANTITY	LOCATION 22 TOTAL QUANTITY
	20400800	FURNISHED EXCAVATION	CUYD	20	20	20
	25000300	SEEDING, CLASS 3	ACRE	0.03	0.13	0.03
	25000400	NITROGEN FERTILIZER NUTRIENT	POUND	3.1	11.48	2.64
	25000500	PHOSPHORUS FERTILIZER NUTRIENT	POUND	3.1	11.48	2.64
	25000600	POTASSIUM FERTILIZER NUTRIENT	POUND	3.1	11.48	2.64
	25100115	MULCH, METHOD 2	ACRE	0.03	0.13	0.03
	28000250	TEMPORARY EROSION CONTROL SEEDING	POUND	3.40	13.15	2.94
	28000400	PERIMETER EROSION BARRIER	FOOT	125	187.5	150
SP	48102100	AGGREGATE WEDGE SHOULDER, TYPE B	TON	3	13	10
	63000003	STEEL PLATE BEAM GUARDRAIL, TYPE A, 9 FOOT POSTS	FOOT	25	87.5	50
	63100167	TRAFFIC BARRIER TERMINAL, TYPE 1 (SPECIAL) TANGENT	EACH	2	2	2
	63200310	GUARDRAIL REMOVAL	FOOT	77	114.5	102
	72501000	TERMINAL MARKER - DIRECT APPLIED	EACH	2	2	2
	78200005	GUARDRAIL REFLECTORS, TYPE A	EACH	2	11	8
SP	X6330900	VERTICAL ADJUSTMENT OF GUARDRAIL	FOOT	-	387.5	-
SP	Z0001002	GUARDRAIL AGGREGATE EROSION CONTROL	TON	-	-	49

MODEL: V:\2021 - HSR Guardrail PH 118 (Fulton Cty)\CAD\CADD Sheets\2021\22\Location 20, 21, 22.dgn
 FILE NAME: V:\2021 - HSR Guardrail PH 118 (Fulton Cty)\CAD\CADD Sheets\2021\22\Location 20, 21, 22.dgn



USER NAME = SMaharjan	DESIGNED - WSL	REVISED -
PLOT SCALE = 100.0000' / in.	DRAWN - SRH	REVISED -
PLOT DATE = 4/30/2021	CHECKED - WSL	REVISED -
	DATE - 11-25-20	REVISED -

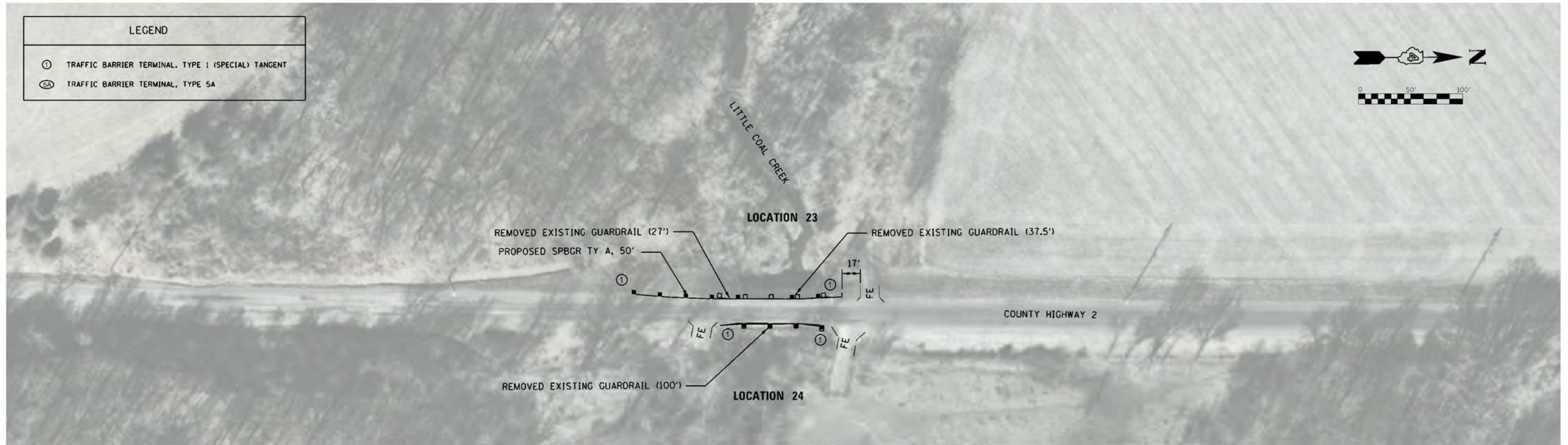
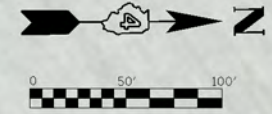
**FULTON COUNTY
HIGHWAY DEPARTMENT**

**COUNTY HIGHWAY 2
LOCATION 20, 21, 22 PLAN**

SCALE: N/A SHEET 1 OF 1 SHEETS STA. N/A TO STA. N/A

F.A.S. RTE.	SECTION	COUNTY	TOTAL SHEETS	SHEET NO.
VAR	20-00900-00-5P	FULTON	23	14
CONTRACT NO. 89799			ILLINOIS FED. AID PROJECT	

LEGEND	
①	TRAFFIC BARRIER TERMINAL, TYPE 1 (SPECIAL) TANGENT
ⓈA	TRAFFIC BARRIER TERMINAL, TYPE 5A



LOCATION 23 & 24					
SPECIAL PROVISION (SP)	CODE NO.	DESCRIPTION	UNIT	LOCATION 23 TOTAL QUANTITY	LOCATION 24 TOTAL QUANTITY
	20400800	FURNISHED EXCAVATION	CU YD	20	-
	25000300	SEEDING, CLASS 3	ACRE	0.04	0.02
	25000400	NITROGEN FERTILIZER NUTRIENT	POUND	3.83	2.07
	25000500	PHOSPHORUS FERTILIZER NUTRIENT	POUND	3.83	2.07
	25000600	POTASSIUM FERTILIZER NUTRIENT	POUND	3.83	2.07
	25100115	MULCH, METHOD 2	ACRE	0.04	0.02
	28000250	TEMPORARY EROSION CONTROL SEEDING	POUND	4.26	2.3
	28000400	PERIMETER EROSION BARRIER	FOOT	150	100
SP	48102100	AGGREGATE WEDGE SHOULDER, TYPE B	TON	4	2
	63000003	STEEL PLATE BEAM GUARDRAIL, TYPE A, 9 FOOT POSTS	FOOT	50	-
	63100167	TRAFFIC BARRIER TERMINAL, TYPE 1(SPECIAL) TANGENT	EACH	2	2
	63200310	GUARDRAIL REMOVAL	FOOT	64.5	100
	72501000	TERMINAL MARKER - DIRECT APPLIED	EACH	2	2
	78200005	GUARDRAIL REFLECTORS, TYPE A	EACH	3	1

MODEL: V:\1271 - HSP Guardrail PH 118 (Fulton Co.)\CAD\CADD Sheets\1271-ph 118-Location 23,24.dgn
 FILE NAME: V:\1271 - HSP Guardrail PH 118 (Fulton Co.)\CAD\CADD Sheets\1271-ph 118-Location 23,24.dgn

Hutchison Engineering, Inc.
 Jacksonville • Peoria • Quad Cities • Shorewood
 Since 1945

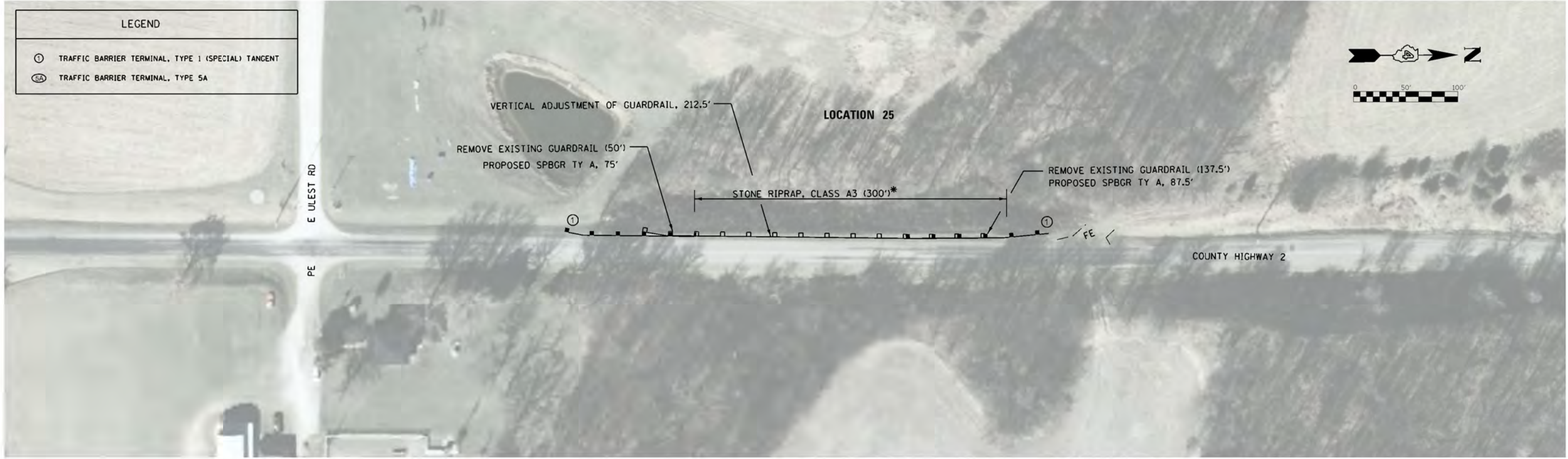
USER NAME = SMaharjan	DESIGNED - WSL	REVISED -
PLOT SCALE = 100.0000' / in.	DRAWN - SRH	REVISED -
PLOT DATE = 4/30/2021	CHECKED - WSL	REVISED -
	DATE - 11-25-20	REVISED -

**FULTON COUNTY
HIGHWAY DEPARTMENT**

**COUNTY HIGHWAY 2
LOCATION 23, 24 PLAN**

SCALE: N/A SHEET 1 OF 1 SHEETS STA. N/A TO STA. N/A

F.A.S. RTE.	SECTION	COUNTY	TOTAL SHEETS	SHEET NO.
VAR	20-00900-00-5P	FULTON	23	15
CONTRACT NO. 89799				
ILLINOIS FED. AID PROJECT				

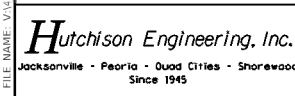


NOTE

* STONE RIPRAP, CLASS A3, AS SHOWN, IS FOR PLACING BEHIND GUARDRAIL POSTS FOR LOCATIONS WITH FRONT SLOPES 2:1 OR GREATER, OR AS DIRECTED BY THE ENGINEER.
 QUANTITIES AND LOCATIONS SHOWN ARE APPROXIMATE. EXACT LOCATIONS SHALL BE VERIFIED BY THE ENGINEER.

LOCATION 25				
SPECIAL PROVISION (SP)	CODE NO.	DESCRIPTION	UNIT	LOCATION 25 TOTAL QUANTITY
	20400800	FURNISHED EXCAVATION	CU YD	40
	25000300	SEEDING, CLASS 3	ACRE	0.04
	25000400	NITROGEN FERTILIZER NUTRIENT	POUND	3.62
	25000500	PHOSPHORUS FERTILIZER NUTRIENT	POUND	3.62
	25000600	POTASSIUM FERTILIZER NUTRIENT	POUND	3.62
	25100115	MULCH, METHOD 2	ACRE	0.04
	28000250	TEMPORARY EROSION CONTROL SEEDING	POUND	4.02
	28000400	PERIMETER EROSION BARRIER	FOOT	262.5
	28100205	STONE RIPRAP, CLASS A3	TON	33
SP	48102100	AGGREGATE WEDGE SHOULDER, TYPE B	TON	11
	63000003	STEEL PLATE BEAM GUARDRAIL, TYPE A, 9 FOOT POSTS	FOOT	162.5
	63100167	TRAFFIC BARRIER TERMINAL, TYPE 1 (SPECIAL) TANGENT	EACH	2
	63200310	GUARDRAIL REMOVAL	FOOT	187.5
	72501000	TERMINAL MARKER - DIRECT APPLIED	EACH	2
	78200005	GUARDRAIL REFLECTORS, TYPE A	EACH	9
SP	X6330900	VERTICAL ADJUSTMENT OF GUARDRAIL	FOOT	17

MODEL: V:\1271 - HSP Guardrail PH 118 (Fulton Cty)\CAD\CADD Sheets\1271-ph-16-location_25.dgn
 FILE NAME: V:\1271 - HSP Guardrail PH 118 (Fulton Cty)\CAD\CADD Sheets\1271-ph-16-location_25.dgn



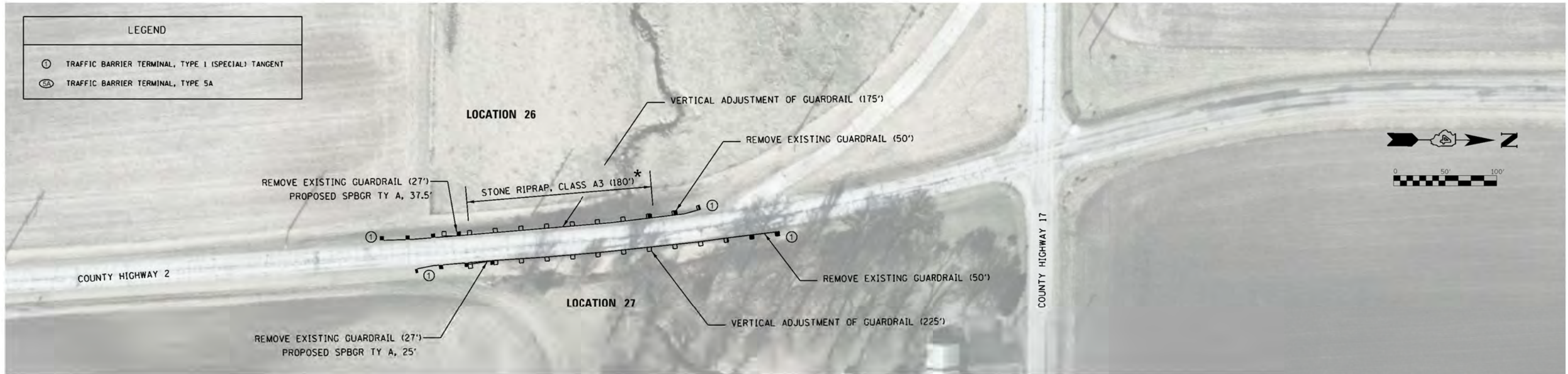
USER NAME = SMaharjan	DESIGNED - WSL	REVISED -
PLOT SCALE = 100.0000' / in.	DRAWN - SRH	REVISED -
PLOT DATE = 4/30/2021	CHECKED - WSL	REVISED -
	DATE - 11-25-20	REVISED -

**FULTON COUNTY
HIGHWAY DEPARTMENT**

**COUNTY HIGHWAY 2
LOCATION 25 PLAN**

SCALE: N/A SHEET 1 OF 1 SHEETS STA. N/A TO STA. N/A

F.A.S. RTE.	SECTION	COUNTY	TOTAL SHEETS	SHEET NO.
VAR	20-00900-00-5P	FULTON	23	16
CONTRACT NO. 89799			ILLINOIS FED. AID PROJECT	



NOTE

* STONE RIPRAP, CLASS A3, AS SHOWN, IS FOR PLACING BEHIND GUARDRAIL POSTS FOR LOCATIONS WITH FRONT SLOPES 2:1 OR GREATER, OR AS DIRECTED BY THE ENGINEER.

QUANTITIES AND LOCATIONS SHOWN ARE APPROXIMATE. EXACT LOCATIONS SHALL BE VERIFIED BY THE ENGINEER.

LOCATION 26 & 27					
SPECIAL PROVISION (SP)	CODE NO.	DESCRIPTION	UNIT	LOCATION 26 TOTAL QUANTITY	LOCATION 27 TOTAL QUANTITY
	20400800	FURNISHED EXCAVATION	CU YD	20	20
	25000300	SEEDING, CLASS 3	ACRE	0.03	0.08
	25000400	NITROGEN FERTILIZER NUTRIENT	POUND	2.70	7.19
	25000500	PHOSPHORUS FERTILIZER NUTRIENT	POUND	2.70	7.19
	25000600	POTASSIUM FERTILIZER NUTRIENT	POUND	2.70	7.19
	25100115	MULCH, METHOD 2	ACRE	0.03	0.08
	28000250	TEMPORARY EROSION CONTROL SEEDING	POUND	3.00	7.99
	28000400	PERIMETER EROSION BARRIER	FOOT	137.5	125
	28100205	STONE RIPRAP, CLASS A3	TON	20	-
SP	48102100	AGGREGATE WEDGE SHOULDER, TYPE B	TON	7	8
	63000003	STEEL PLATE BEAM GUARDRAIL, TYPE A, 9 FOOT POSTS	FOOT	37.5	25
	63100167	TRAFFIC BARRIER TERMINAL, TYPE 1(SPECIAL) TANGENT	EACH	2	2
	63200310	GUARDRAIL REMOVAL	FOOT	77	77
	72501000	TERMINAL MARKER - DIRECT APPLIED	EACH	2	2
	78200005	GUARDRAIL REFLECTORS, TYPE A	EACH	9	6
SP	X6330900	VERTICAL ADJUSTMENT OF GUARDRAIL	FOOT	175	225

MODEL: V14227 - HSP Guardrail PH 118 (Fulton Cty) CADDDCADDD Sheets14227.dwg 17:Location 26,27.dgn
 FILE NAME: V14227 - HSP Guardrail PH 118 (Fulton Cty) CADDDCADDD Sheets14227.dwg 17:Location 26,27.dgn



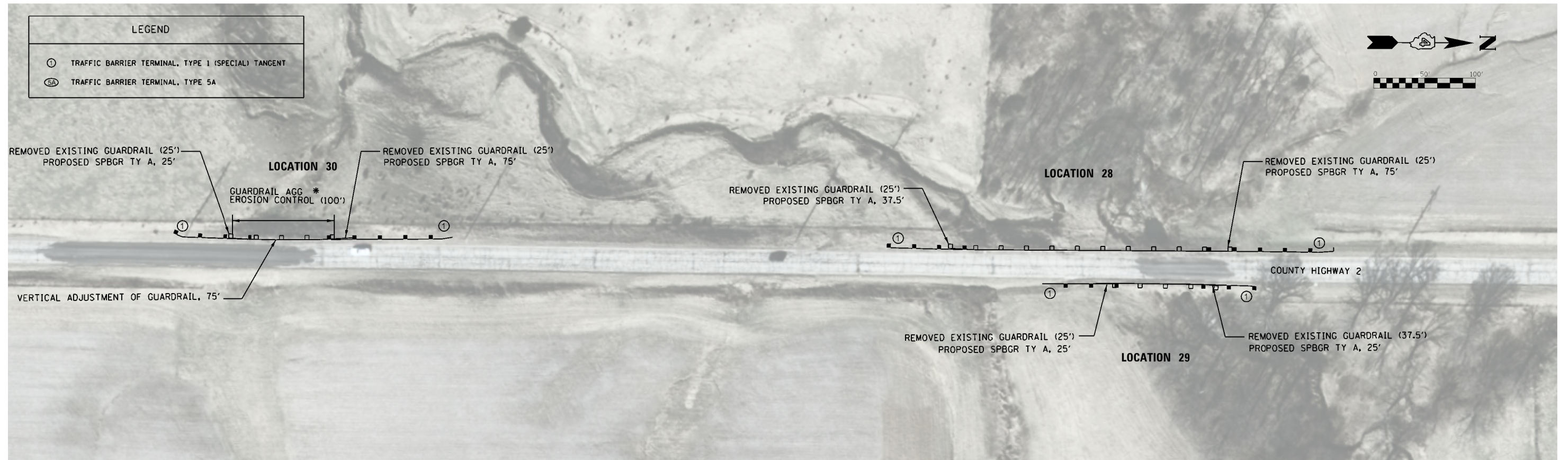
USER NAME = S.Maharjan	DESIGNED - WSL	REVISED -
PLOT SCALE = 100.0000' / in.	DRAWN - SRH	REVISED -
PLOT DATE = 4/30/2021	CHECKED - WSL	REVISED -
	DATE - 11-25-20	REVISED -

**FULTON COUNTY
HIGHWAY DEPARTMENT**

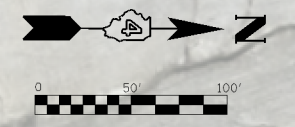
**COUNTY HIGHWAY 2
LOCATION 26, 27 PLAN**

SCALE: N/A SHEET 1 OF 1 SHEETS STA. N/A TO STA. N/A

F.A.S RTE.	SECTION	COUNTY	TOTAL SHEETS	SHEET NO.
VAR	20-00900-00-5P	FULTON	23	17
CONTRACT NO. 89799				
ILLINOIS FED. AID PROJECT				



LEGEND	
①	TRAFFIC BARRIER TERMINAL, TYPE 1 (SPECIAL) TANGENT
5A	TRAFFIC BARRIER TERMINAL, TYPE 5A

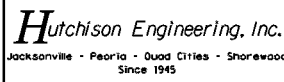


NOTE

* GUARDRAIL AGG EROSION CONTROL, AS SHOWN, IS FOR PLACING BEHIND GUARDRAIL POSTS FOR LOCATIONS WITH FRONT SLOPES 2:1 OR GREATER, OR AS DIRECTED BY THE ENGINEER.
 QUANTITIES AND LOCATIONS SHOWN ARE APPROXIMATE. EXACT LOCATIONS SHALL BE VERIFIED BY THE ENGINEER.

LOCATION 28, 29 & 30						
SPECIAL PROVISION (SP)	CODE NO.	DESCRIPTION	UNIT	LOCATION 28 TOTAL QUANTITY	LOCATION 29 TOTAL QUANTITY	LOCATION 30 TOTAL QUANTITY
	20400800	FURNISHED EXCAVATION	CU YD	40	40	40
	25000300	SEEDING, CLASS 3	ACRE	0.1	0.05	0.04
	25000400	NITROGEN FERTILIZER NUTRIENT	POUND	8.78	4.39	3.62
	25000500	PHOSPHORUS FERTILIZER NUTRIENT	POUND	8.78	4.39	3.62
	25000600	POTASSIUM FERTILIZER NUTRIENT	POUND	8.78	4.39	3.62
	25100115	MULCH, METHOD 2	ACRE	0.1	0.05	0.04
	28000250	TEMPORARY EROSION CONTROL SEEDING	POUND	9.76	4.88	4.02
	28000400	PERIMETER EROSION BARRIER	FOOT	212.5	150	175
SP	48102100	AGGREGATE WEDGE SHOULDER, TYPE B	TON	10	5	6
	63000003	STEEL PLATE BEAM GUARDRAIL, TYPE A, 9 FOOT POSTS	FOOT	112.5	50	100
	63100167	TRAFFIC BARRIER TERMINAL, TYPE 1(SPECIAL) TANGENT	EACH	2	2	2
	63200310	GUARDRAIL REMOVAL	FOOT	62.5	62.5	50
	72501000	TERMINAL MARKER - DIRECT APPLIED	EACH	2	2	2
	78200005	GUARDRAIL REFLECTORS, TYPE A	EACH	8	3	5
SP	X6330900	VERTICAL ADJUSTMENT OF GUARDRAIL	FOOT	-	-	75
SP	Z0001002	GUARDRAIL AGGREGATE EROSION CONTROL	TON	-	-	15

MODEL: V143271 - HSP Guardrail PH LIL (Fulton Cty) CADDD\CADD Sheets\34377.dwg Location: 28, 29, 30.dgn
 FILE NAME: V143271 - HSP Guardrail PH LIL (Fulton Cty) CADDD\CADD Sheets\34377.dwg Location: 28, 29, 30.dgn



USER NAME = SMaharjan	DESIGNED - WSL	REVISED -
PLOT SCALE = 100.0000' / in.	DRAWN - SRH	REVISED -
PLOT DATE = 5/3/2021	CHECKED - WSL	REVISED -
	DATE - 11-25-20	REVISED -

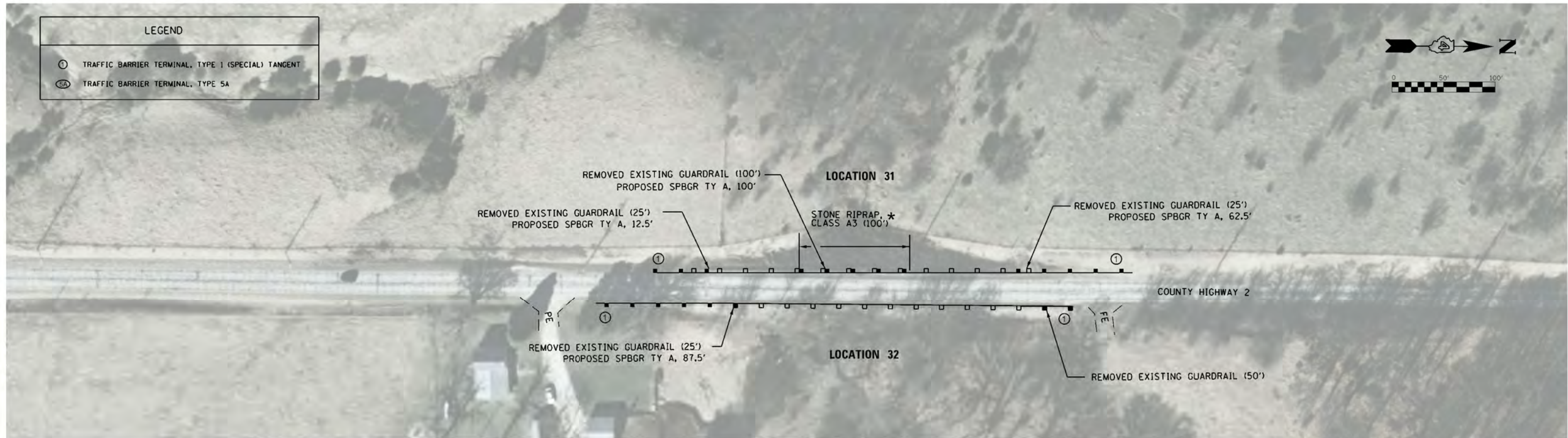
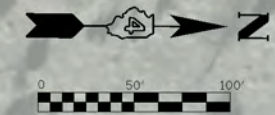
FULTON COUNTY HIGHWAY DEPARTMENT

COUNTY HIGHWAY 2 LOCATION 28, 29, & 30 PLAN

SCALE: N/A SHEET 1 OF 1 SHEETS STA. N/A TO STA. N/A

F.A.S RTE.	SECTION	COUNTY	TOTAL SHEETS	SHEET NO.
VAR	20-00900-00-5P	FULTON	23	18
CONTRACT NO. 89799			ILLINOIS FED. AID PROJECT	

LEGEND	
①	TRAFFIC BARRIER TERMINAL, TYPE 1 (SPECIAL) TANGENT
⑤A	TRAFFIC BARRIER TERMINAL, TYPE 5A



NOTE
 * STONE RIPRAP, CLASS A3, AS SHOWN, IS FOR PLACING BEHIND GUARDRAIL POSTS FOR LOCATIONS WITH FRONT SLOPES 2:1 OR GREATER, OR AS DIRECTED BY THE ENGINEER.
 QUANTITIES AND LOCATIONS SHOWN ARE APPROXIMATE. EXACT LOCATIONS SHALL BE VERIFIED BY THE ENGINEER.

LOCATION 31 & 32					
SPECIAL PROVISION (SP)	CODE NO.	DESCRIPTION	UNIT	LOCATION 31 TOTAL QUANTITY	LOCATION 32 TOTAL QUANTITY
	20400800	FURNISHED EXCAVATION	CU YD	40	20
	25000300	SEEDING, CLASS 3	ACRE	0.08	0.11
	25000400	NITROGEN FERTILIZER NUTRIENT	POUND	7.54	9.56
	25000500	PHOSPHORUS FERTILIZER NUTRIENT	POUND	7.54	9.56
	25000600	POTASSIUM FERTILIZER NUTRIENT	POUND	7.54	9.56
	25100115	MULCH, METHOD 2	ACRE	0.08	0.11
	28000250	TEMPORARY EROSION CONTROL SEEDING	POUND	8.38	10.62
	28000400	PERIMETER EROSION BARRIER	FOOT	275	187.5
	28100205	STONE RIPRAP, CLASS A3	TON	11	-
SP	48102100	AGGREGATE WEDGE SHOULDER, TYPE B	TON	11	11
	63000003	STEEL PLATE BEAM GUARDRAIL, TYPE A, 9 FOOT POSTS	FOOT	175	87.5
	63100167	TRAFFIC BARRIER TERMINAL, TYPE 1 (SPECIAL) TANGENT	EACH	2	2
	63200310	GUARDRAIL REMOVAL	FOOT	150	75
	72501000	TERMINAL MARKER - DIRECT APPLIED	EACH	2	2
	78200005	GUARDRAIL REFLECTORS, TYPE A	EACH	8	8

MODEL: V:\1271 - HSR Guardrail PH 118 (Fulton Co.)\CAD\CADD Sheets\1271-ah-19-Location 31, 32.dgn
 FILE NAME: V:\1271 - HSR Guardrail PH 118 (Fulton Co.)\CAD\CADD Sheets\1271-ah-19-Location 31, 32.dgn

Hutchison Engineering, Inc.
 Jacksonville • Peoria • Quad Cities • Shorewood
 Since 1945

USER NAME = SMaharjan	DESIGNED - WSL	REVISED -
PLOT SCALE = 100.0000' / in.	DRAWN - SRH	REVISED -
PLOT DATE = 4/30/2021	CHECKED - WSL	REVISED -
	DATE - 11-25-20	REVISED -

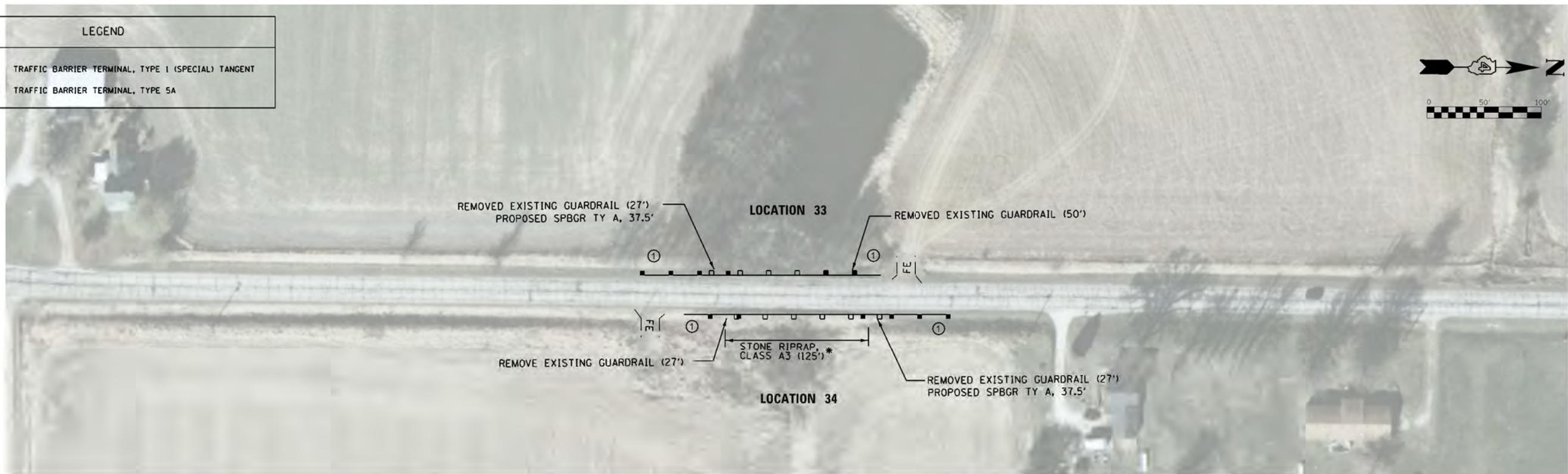
**FULTON COUNTY
 HIGHWAY DEPARTMENT**

**COUNTY HIGHWAY 2
 LOCATION 31, 32 PLAN**

SCALE: N/A SHEET 1 OF 1 SHEETS STA. N/A TO STA. N/A

F.A.S. RTE.	SECTION	COUNTY	TOTAL SHEETS	SHEET NO.
VAR	20-00900-00-5P	FULTON	23	19
CONTRACT NO. 89799			ILLINOIS FED. AID PROJECT	

LEGEND	
①	TRAFFIC BARRIER TERMINAL, TYPE 1 (SPECIAL) TANGENT
⑤A	TRAFFIC BARRIER TERMINAL, TYPE 5A



NOTE

* STONE RIPRAP, CLASS A3, AS SHOWN, IS FOR PLACING BEHIND GUARDRAIL POSTS FOR LOCATIONS WITH FRONT SLOPES 2:1 OR GREATER, OR AS DIRECTED BY THE ENGINEER.
 QUANTITIES AND LOCATIONS SHOWN ARE APPROXIMATE. EXACT LOCATIONS SHALL BE VERIFIED BY THE ENGINEER.

LOCATION 33 & 34						
SPECIAL PROVISION (SP)	CODE NO.	DESCRIPTION	UNIT	LOCATION 33 TOTAL QUANTITY	LOCATION 34 TOTAL QUANTITY	
	20400600	FURNISHED EXCAVATION	CU YD	20	40	
	25000300	SEEDING, CLASS 3	ACRE	0.05	0.02	
	25000400	NITROGEN FERTILIZER NUTRIENT	POUND	4.35	2.24	
	25000500	PHOSPHORUS FERTILIZER NUTRIENT	POUND	4.35	2.24	
	25000600	POTASSIUM FERTILIZER NUTRIENT	POUND	4.35	2.24	
	25100115	MULCH, METHOD 2	ACRE	0.05	0.02	
	28000250	TEMPORARY EROSION CONTROL SEEDING	POUND	4.83	2.49	
	28000400	PERIMETER EROSION BARRIER	FOOT	137.5	137.5	
	28100205	STONE RIPRAP, CLASS A3	TON	-	14	
SP	48102100	AGGREGATE WEDGE SHOULDER, TYPE B	TON	5	5	
	63000003	STEEL PLATE BEAM GUARDRAIL, TYPE A, 9 FOOT POSTS	FOOT	37.5	37.5	
	63100167	TRAFFIC BARRIER TERMINAL, TYPE 1(SPECIAL) TANGENT	EACH	2	2	
	63200310	GUARDRAIL REMOVAL	FOOT	77	54	
	72501000	TERMINAL MARKER - DIRECT APPLIED	EACH	2	2	
	78200005	GUARDRAIL REFLECTORS, TYPE A	EACH	3	4	

MODEL: V:\1271 - HSP Guardrail PH 118 (Fulton Co.)\CAD\CADD Sheets\1271-ph-20-location_33_34.dgn
 FILE NAME: V:\1271 - HSP Guardrail PH 118 (Fulton Co.)\CAD\CADD Sheets\1271-ph-20-location_33_34.dgn



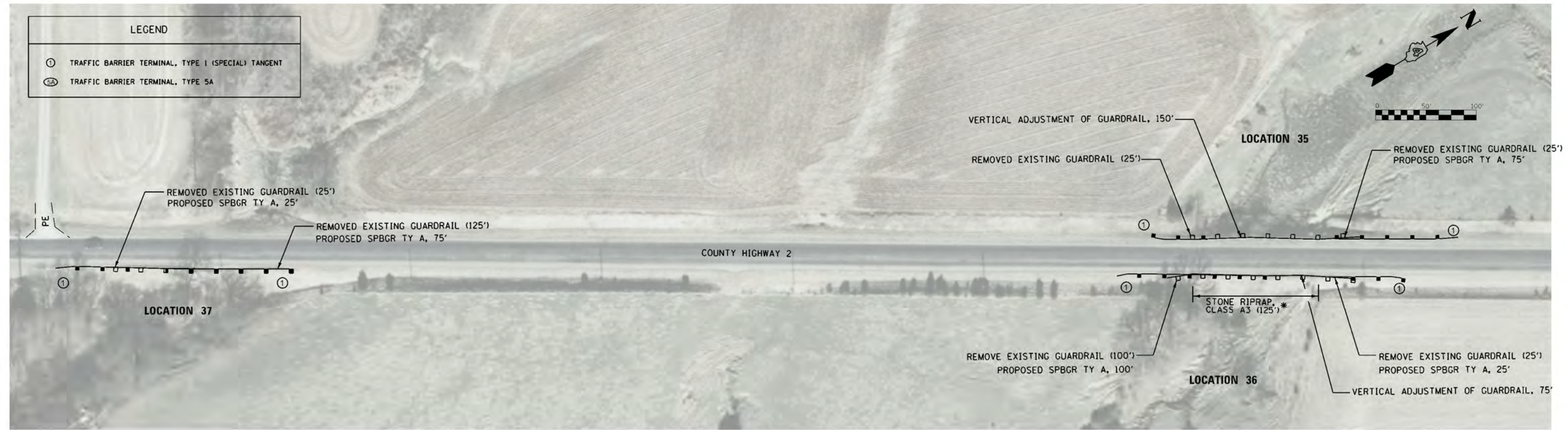
USER NAME = SMaharjan	DESIGNED - WSL	REVISED -
PLOT SCALE = 100.0000' / in.	DRAWN - SRH	REVISED -
PLOT DATE = 4/30/2021	CHECKED - WSL	REVISED -
	DATE - 11-25-20	REVISED -

**FULTON COUNTY
HIGHWAY DEPARTMENT**

**COUNTY HIGHWAY 2
LOCATION 33 & 34 PLAN**

SCALE: N/A SHEET 1 OF 1 SHEETS STA. N/A TO STA. N/A

F.A.S RTE.	SECTION	COUNTY	TOTAL SHEETS	SHEET NO.
VAR	20-00900-00-5P	FULTON	23	20
CONTRACT NO. 89799				
ILLINOIS FED. AID PROJECT				



NOTE

* STONE RIPRAP, CLASS A3, AS SHOWN, IS FOR PLACING BEHIND GUARDRAIL POSTS FOR LOCATIONS WITH FRONT SLOPES 2:1 OR GREATER, OR AS DIRECTED BY THE ENGINEER.
 QUANTITIES AND LOCATIONS SHOWN ARE APPROXIMATE. EXACT LOCATIONS SHALL BE VERIFIED BY THE ENGINEER.

LOCATION 35, 36 & 37						
SPECIAL PROVISION (SP)	CODE NO.	DESCRIPTION	UNIT	LOCATION 35 TOTAL QUANTITY	LOCATION 36 TOTAL QUANTITY	LOCATION 37 TOTAL QUANTITY
	20400800	FURNISHED EXCAVATION	CU YD	40	40	20
	25000300	SEEDING, CLASS 3	ACRE	0.07	0.04	0.06
	25000400	NITROGEN FERTILIZER NUTRIENT	POUND	6.71	3.62	5.17
	25000500	PHOSPHORUS FERTILIZER NUTRIENT	POUND	6.71	3.62	5.17
	25000600	POTASSIUM FERTILIZER NUTRIENT	POUND	6.71	3.62	5.17
	25100115	MULCH, METHOD 2	ACRE	0.07	0.04	0.06
	28000250	TEMPORARY EROSION CONTROL SEEDING	POUND	7.46	4.02	5.74
	28000400	PERIMETER EROSION BARRIER	FOOT	175	225	200
	28100205	STONE RIPRAP, CLASS A3	TON	-	14	-
SP	48102100	AGGREGATE WEDGE SHOULDER, TYPE B	TON	7	7	6
	63000003	STEEL PLATE BEAM GUARDRAIL, TYPE A, 9 FOOT POSTS	FOOT	75	125	100
	63100167	TRAFFIC BARRIER TERMINAL, TYPE 1 (SPECIAL) TANGENT	EACH	2	2	2
	63200310	GUARDRAIL REMOVAL	FOOT	50	125	150
	72501000	TERMINAL MARKER - DIRECT APPLIED	EACH	2	2	2
	78200005	GUARDRAIL REFLECTORS, TYPE A	EACH	6	6	4
SP	X6330900	VERTICAL ADJUSTMENT OF GUARDRAIL	FOOT	150	75	-

MODEL: V:\1227 - HSR Guardrail PH 118 (Fulton County)\CAD\CADD Sheets\1227-ph-21-location_35_36_37.dgn
 FILE NAME: V:\1227 - HSR Guardrail PH 118 (Fulton County)\CAD\CADD Sheets\1227-ph-21-location_35_36_37.dgn

Hutchison Engineering, Inc.
 Jacksonville • Peoria • Quad Cities • Shorewood
 Since 1945

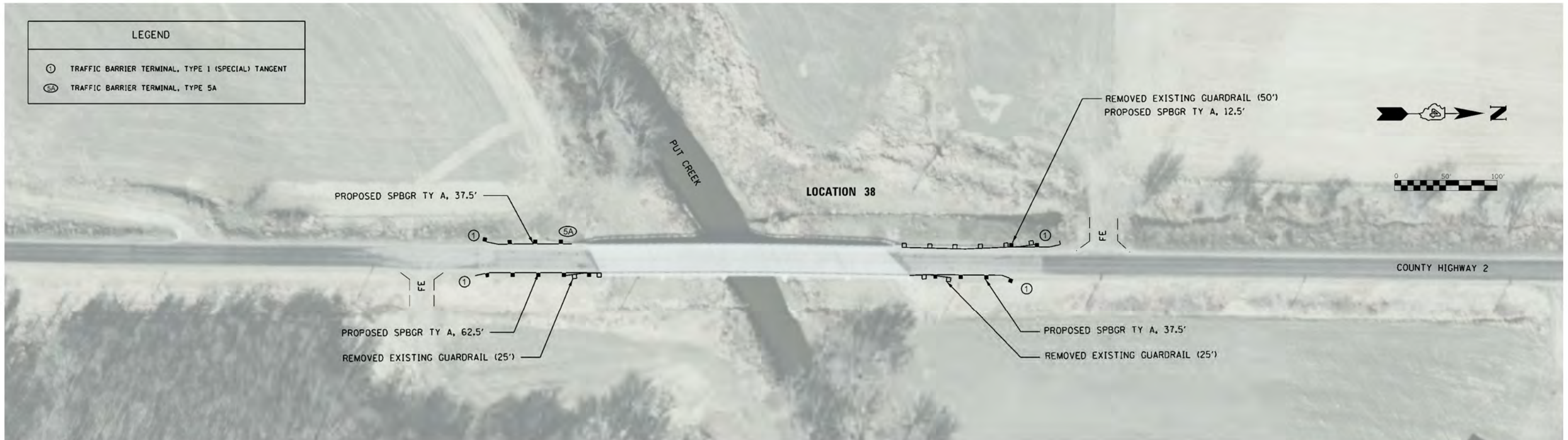
USER NAME = SMaharjan	DESIGNED - WSL	REVISED -
DRAWN - SRH	REVISOR -	
PLOT SCALE = 100.0000' / in.	CHECKED - WSL	REVISED -
PLOT DATE = 4/30/2021	DATE - 11-25-20	REVISED -

**FULTON COUNTY
 HIGHWAY DEPARTMENT**

**COUNTY HIGHWAY 2
 LOCATION 35, 36, 37 PLAN**

SCALE: N/A SHEET 1 OF 1 SHEETS STA. N/A TO STA. N/A

F.A.S RTE.	SECTION	COUNTY	TOTAL SHEETS	SHEET NO.
VAR	20-00900-00-5P	FULTON	23	21
CONTRACT NO. 89799			ILLINOIS FED. AID PROJECT	



LOCATION 38				
SPECIAL PROVISION (SP)	CODE NO.	DESCRIPTION	UNIT	LOCATION 38 TOTAL QUANTITY
	20400800	FURNISHED EXCAVATION	CU YD	80
	25000300	SEEDING, CLASS 3	ACRE	0.11
	25000400	NITROGEN FERTILIZER NUTRIENT	POUND	10.19
	25000500	PHOSPHORUS FERTILIZER NUTRIENT	POUND	10.19
	25000600	POTASSIUM FERTILIZER NUTRIENT	POUND	10.19
	25100115	MULCH, METHOD 2	ACRE	0.11
	28000250	TEMPORARY EROSION CONTROL SEEDING	POUND	11.32
	28000400	PERIMETER EROSION BARRIER	FOOT	363.5
SP	48102100	AGGREGATE WEDGE SHOULDER, TYPE B	TON	11
	63000003	STEEL PLATE BEAM GUARDRAIL, TYPE A, 9 FOOT POSTS	FOOT	150
	63100075	TRAFFIC BARRIER TERMINAL, TYPE 5A	EACH	1
	63100167	TRAFFIC BARRIER TERMINAL, TYPE 1 (SPECIAL) TANGENT	EACH	4
	63200310	GUARDRAIL REMOVAL	FOOT	80
	72501000	TERMINAL MARKER - DIRECT APPLIED	EACH	4
	78200005	GUARDRAIL REFLECTORS, TYPE A	EACH	6

MODEL: \\FULTON\GIS\Projects\20-00900\00-5P\GIS\GisData\Map_Sheets\143271.dwg; 22-Location_38.dwg
 FILE NAME: V:\143271 - HSP Guardrail PH 118 (Fulton Co.)\CAD\CADD Sheets\143271.dwg; 22-Location_38.dwg



USER NAME = SMaharjan	DESIGNED - WSL	REVISED -
PLOT SCALE = 100.0000' / in.	DRAWN - SRH	REVISED -
PLOT DATE = 4/30/2021	CHECKED - WSL	REVISED -
	DATE - 11-25-20	REVISED -

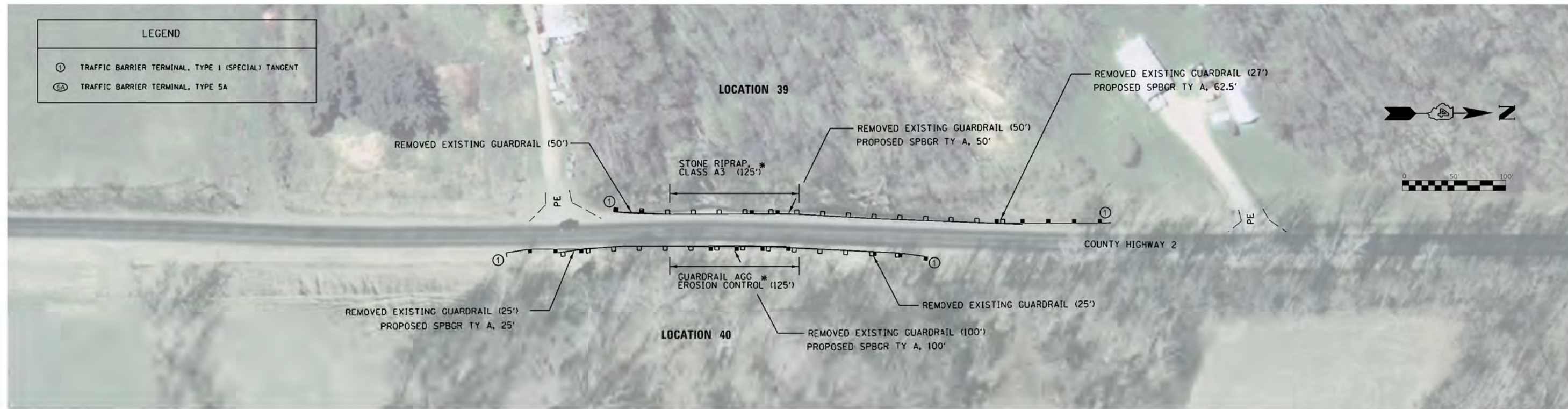
**FULTON COUNTY
HIGHWAY DEPARTMENT**

**COUNTY HIGHWAY 2
LOCATION 38 PLAN**

SCALE: N/A SHEET 1 OF 1 SHEETS STA. N/A TO STA. N/A

F.A.S. RTE.	SECTION	COUNTY	TOTAL SHEETS	SHEET NO.
VAR	20-00900-00-5P	FULTON	23	22
CONTRACT NO. 89799				
ILLINOIS FED. AID PROJECT				

LEGEND	
①	TRAFFIC BARRIER TERMINAL, TYPE 1 (SPECIAL) TANGENT
SA	TRAFFIC BARRIER TERMINAL, TYPE 5A



NOTE

* STONE RIPRAP, CLASS A3, & GUARDRAIL AGG EROSION CONTROL AS SHOWN, IS FOR PLACING BEHIND GUARDRAIL POSTS FOR LOCATIONS WITH FRONT SLOPES 2:1 OR GREATER, OR AS DIRECTED BY THE ENGINEER.

QUANTITIES AND LOCATIONS SHOWN ARE APPROXIMATE. EXACT LOCATIONS SHALL BE VERIFIED BY THE ENGINEER.

LOCATION 39 & 40						
SPECIAL PROVISION (SP)	CODE NO.	DESCRIPTION	UNIT	LOCATION 39 TOTAL QUANTITY	LOCATION 40 TOTAL QUANTITY	
	20400800	FURNISHED EXCAVATION	CU YD	40	40	
	25000300	SEEDING, CLASS 3	ACRE	0.08	0.07	
	25000400	NITROGEN FERTILIZER NUTRIENT	POUND	7.24	5.89	
	25000500	PHOSPHORUS FERTILIZER NUTRIENT	POLIND	7.24	5.89	
	25000600	POTASSIUM FERTILIZER NUTRIENT	POUND	7.24	5.89	
	25100115	MULCH, METHOD 2	ACRE	0.08	0.07	
	28000250	TEMPORARY EROSION CONTROL SEEDING	POUND	8.05	6.54	
	28000400	PERIMETER EROSION BARRIER	FOOT	212.5	225	
	28100205	STONE RIPRAP, CLASS A3	TON	14	-	
SP	48102100	AGGREGATE WEDGE SHOULDER, TYPE B	TON	11	9	
	63000003	STEEL PLATE BEAM GUARDRAIL, TYPE A, 9 FOOT POSTS	FOOT	112.5	125	
	63100167	TRAFFIC BARRIER TERMINAL, TYPE 1 (SPECIAL) TANGENT	EACH	2	2	
	63200310	GUARDRAIL REMOVAL	FOOT	127	150	
	72501000	TERMINAL MARKER - DIRECT APPLIED	EACH	2	2	
	78200005	GUARDRAIL REFLECTORS, TYPE A	EACH	9	7	
SP	Z0001002	GUARDRAIL AGGREGATE EROSION CONTROL	TON	-	19	

MODEL: V:\1271 - HSP Guardrail PH 118 (Fulton Co.)\CADD\CADD Sheets\1271-ph-23-location_39_40.dgn
 FILE NAME: V:\1271 - HSP Guardrail PH 118 (Fulton Co.)\CADD\CADD Sheets\1271-ph-23-location_39_40.dgn

USER NAME = SMaharjan	DESIGNED - WSL	REVISED -
PLOT SCALE = 100.0000' / in.	DRAWN - SRH	REVISED -
PLOT DATE = 4/30/2021	CHECKED - WSL	REVISED -
	DATE - 11-25-20	REVISED -

F.A.S. RTE.	SECTION	COUNTY	TOTAL SHEETS	SHEET NO.
VAR	20-00900-00-5P	FULTON	23	23
CONTRACT NO. 89799			ILLINOIS FED. AID PROJECT	