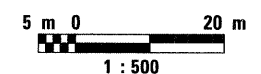
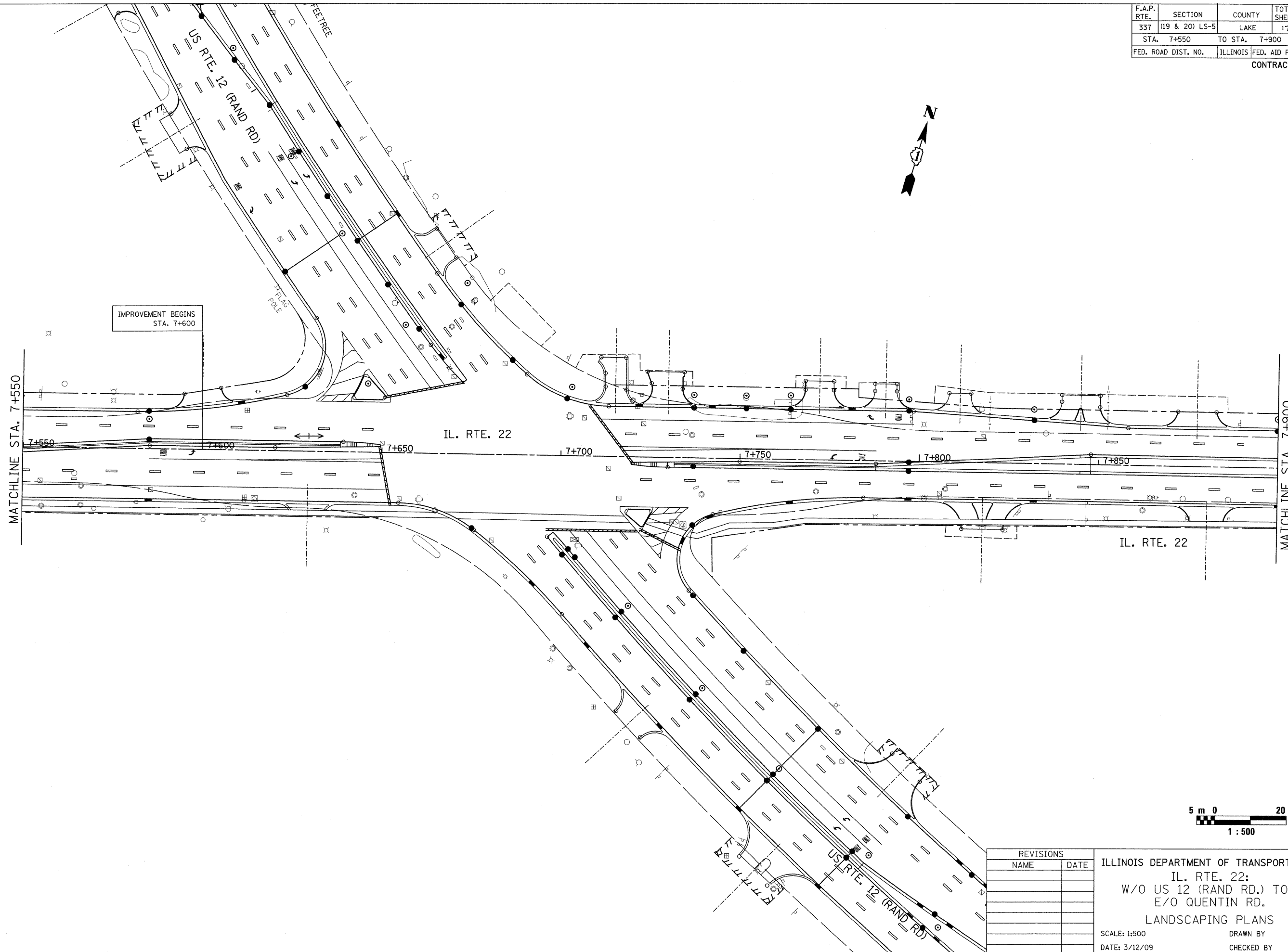


F.A.P. RTE.	SECTION	COUNTY	TOTAL SHEETS	SHEET NO.
337	(19 & 20) LS-5	LAKE	17	6
STA. 7+550		TO STA. 7+900		
FED. ROAD DIST. NO.		ILLINOIS FED. AID PROJECT		
CONTRACT 60F55				



REVISIONS	
NAME	DATE

ILLINOIS DEPARTMENT OF TRANSPORTATION
 IL. RTE. 22:
 W/O US 12 (RAND RD.) TO
 E/O QUENTIN RD.
 LANDSCAPING PLANS
 SCALE: 1:500
 DATE: 3/12/09
 DRAWN BY
 CHECKED BY