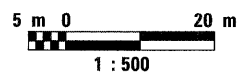
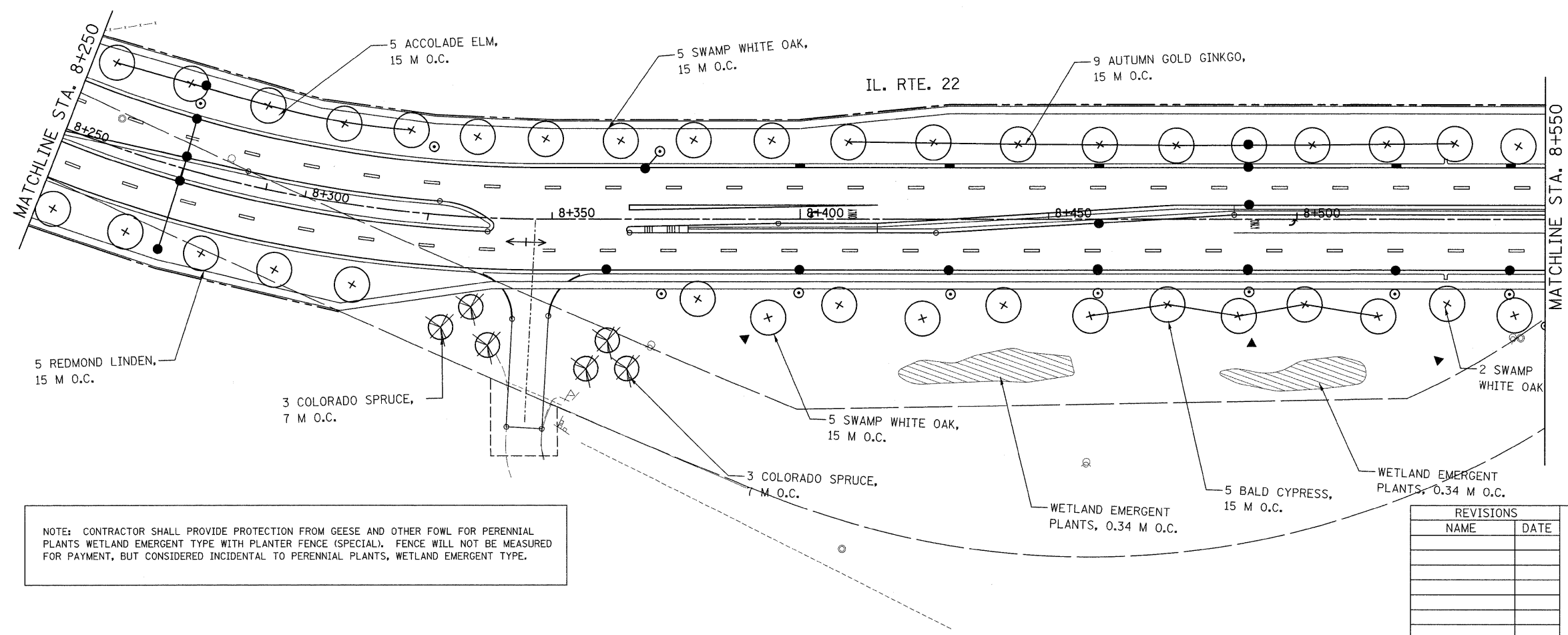
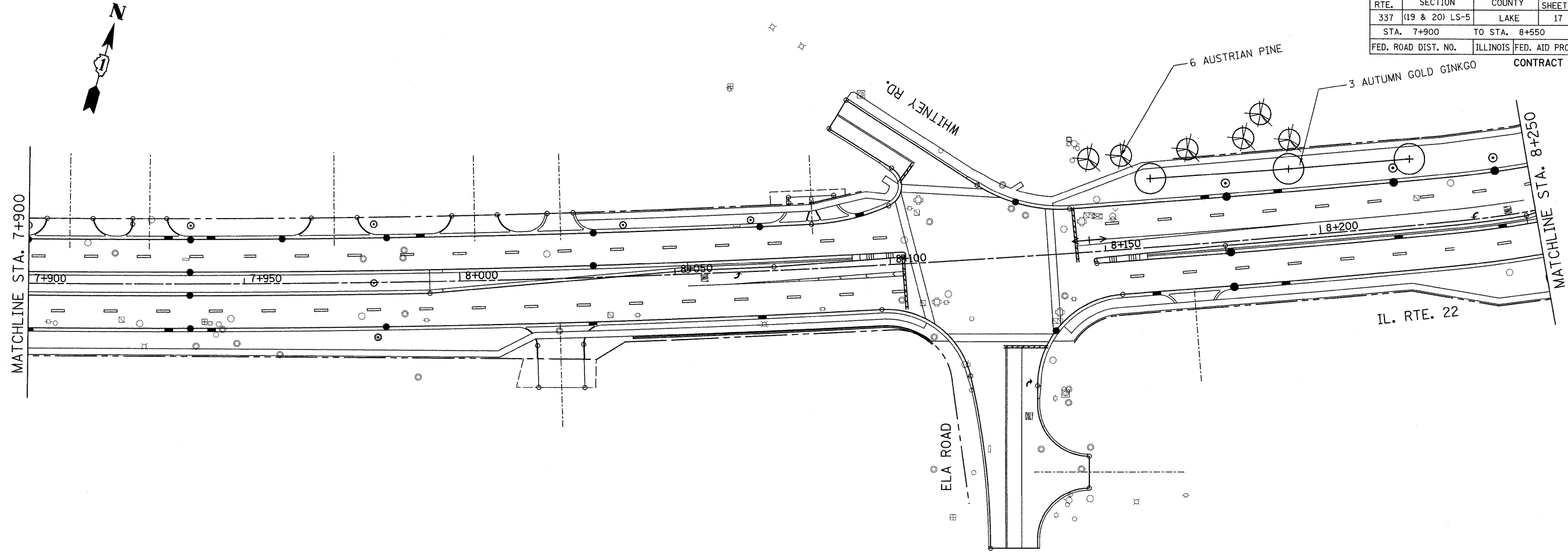


F.A.P. RTE.	SECTION	COUNTY	TOTAL SHEETS	SHEET NO.
337	(19 & 20) LS-5	LAKE	17	7
STA. 7+900		TO STA. 8+550		
FED. ROAD DIST. NO.	ILLINOIS	FED. AID PROJECT	CONTRACT 60F55	



NOTE: CONTRACTOR SHALL PROVIDE PROTECTION FROM GEESE AND OTHER FOWL FOR PERENNIAL PLANTS WETLAND EMERGENT TYPE WITH PLANTER FENCE (SPECIAL). FENCE WILL NOT BE MEASURED FOR PAYMENT, BUT CONSIDERED INCIDENTAL TO PERENNIAL PLANTS, WETLAND EMERGENT TYPE.

REVISIONS	
NAME	DATE

ILLINOIS DEPARTMENT OF TRANSPORTATION
 IL. RTE. 22:
 W/O US 12 (RAND RD.) TO
 E/O QUENTIN RD.
 LANDSCAPING PLANS
 SCALE: 1:500
 DATE: 3/12/09
 DRAWN BY
 CHECKED BY