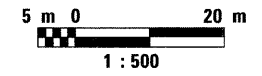
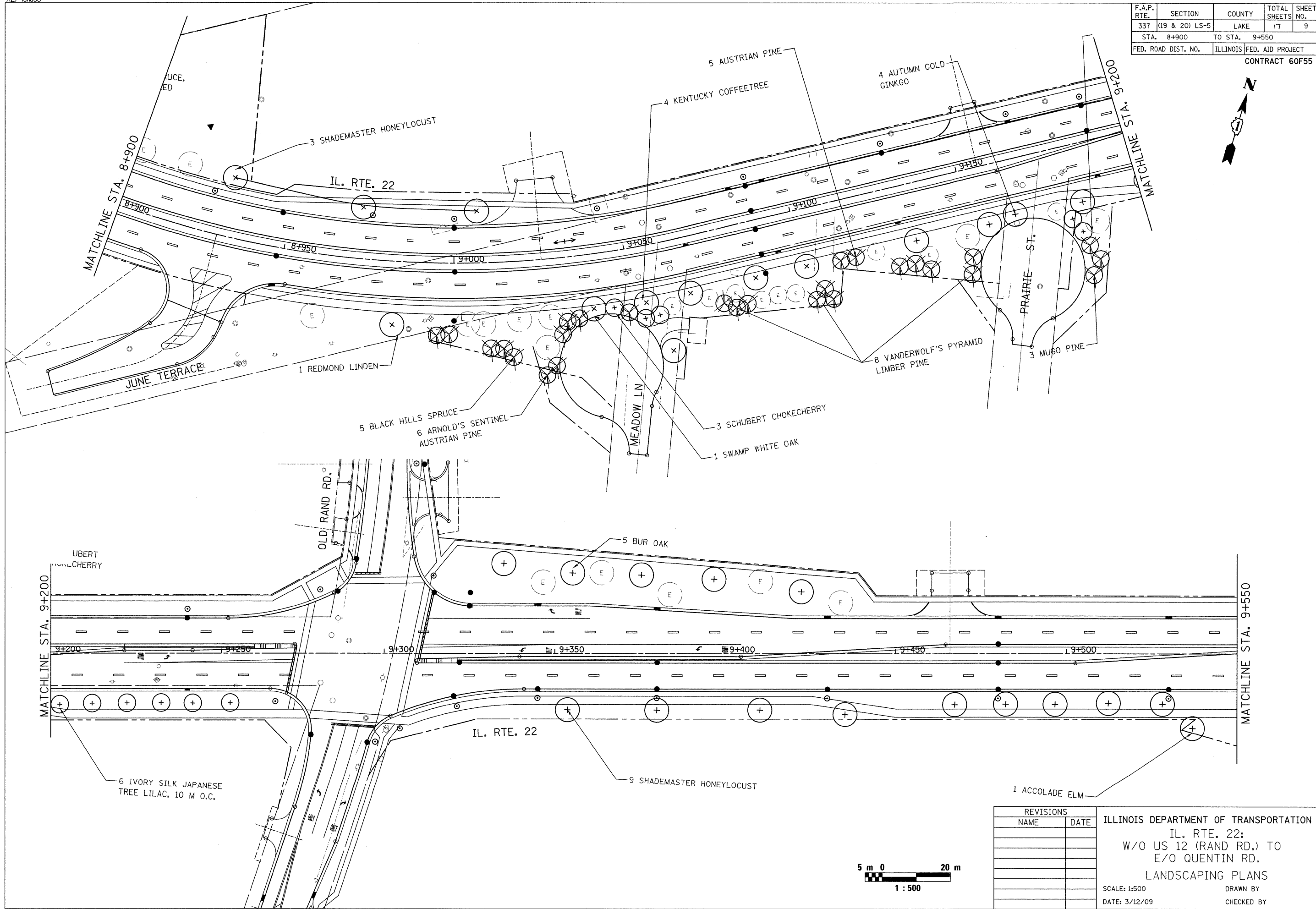


F.A.P. RTE.	SECTION	COUNTY	TOTAL SHEETS	SHEET NO.
337	(19 & 20) LS-5	LAKE	17	9
STA. 8+900		TO STA. 9+550		
FED. ROAD DIST. NO.	ILLINOIS	FED. AID PROJECT		
CONTRACT 60F55				



REVISIONS	
NAME	DATE

ILLINOIS DEPARTMENT OF TRANSPORTATION
 IL. RTE. 22:
 W/O US 12 (RAND RD.) TO
 E/O QUENTIN RD.
 LANDSCAPING PLANS

SCALE: 1:500
 DATE: 3/12/09

DRAWN BY
 CHECKED BY