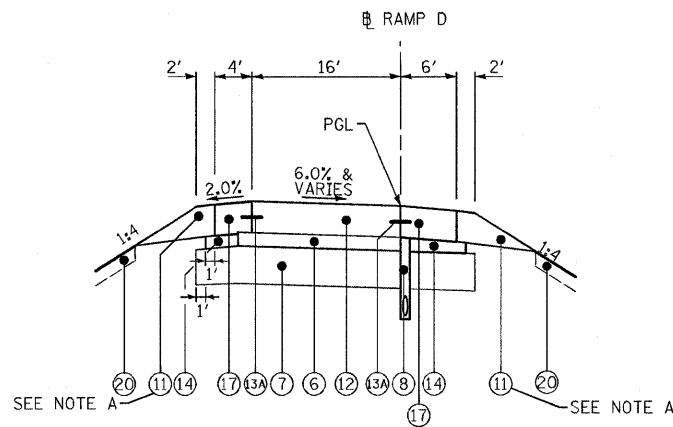
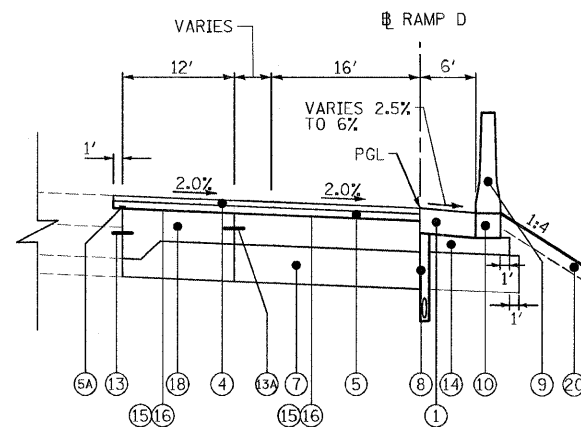


PROPOSED LEGEND

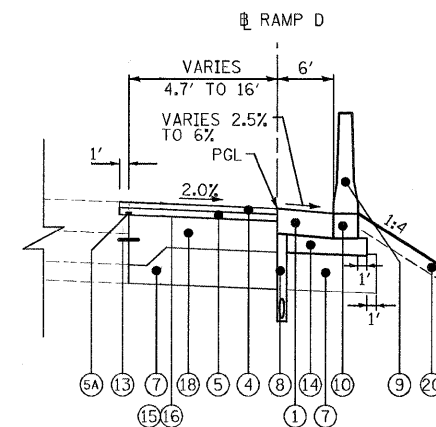
- ① HOT-MIX ASPHALT SHOULDERS, 8"
- ② HOT-MIX ASPHALT SHOULDERS, 12"
- ③ TEMPORARY PAVEMENT
- ④ POLYMERIZED HOT-MIX ASPHALT SURFACE COURSE. MIX "F", N90, 1 3/4"
- ⑤ POLYMERIZED HOT-MIX ASPHALT BINDER COURSE, IL-19.0, N90, 2 1/4"
- ⑤A STRIP REFLECTIVE CRACK CONTROL TREATMENT
- ⑥ STABILIZED SUBBASE 4 1/2"
- ⑦ AGGREGATE SUBGRADE 12"
- ⑧ PIPE UNDERDRAINS 6", 36" NOMINAL DEPTH (SEE DRAWING DU-11)
- ⑨ CONCRETE BARRIER, DOUBLE FACE, 32 INCH HEIGHT
- ⑩ CONCRETE BARRIER BASE
- ⑪ AGGREGATE SHOULDERS, TYPE B 10"
- ⑫ PORTLAND CEMENT CONCRETE PAVEMENT 10" (JOINTED)
- ⑬ DRILL AND GROUT NO. 8 TIE BARS AT 24" CTS.
- ⑬A NO. 8 TIE BARS AT 24" CTS.
- ⑭ SUBBASE GRANULAR MATERIAL, TYPE C
- ⑮ BITUMINOUS MATERIALS (PRIME COAT)
- ⑯ AGGREGATE (PRIME COAT)
- ⑰ PORTLAND CEMENT CONCRETE SHOULDERS 10"
- ⑱ PORTLAND CEMENT CONCRETE BASE COURSE 10"
- ⑲ TOPSOIL FURNISH AND PLACE, 4" SEEDING, CLASS 2A
- ⑳ TOPSOIL FURNISH AND PLACE, 4" SEEDING, CLASS 7
- ㉑ TEMPORARY CONCRETE BARRIER (INSTALL ONLY)
- ㉒ FURNISHED EXCAVATION
- ㉓ AGGREGATE WEDGE SHOULDER, TYPE B
- ㉔ PORTLAND CEMENT CONCRETE PAVEMENT 12"



PROPOSED TYPICAL SECTION - RAMP D
(STA. 4006+50 TO STA. 4009+20.92) RAMP D



PROPOSED TYPICAL HALF SECTION - RAMP D
(STA. 4009+20.92 TO STA. 4018+50) RAMP D



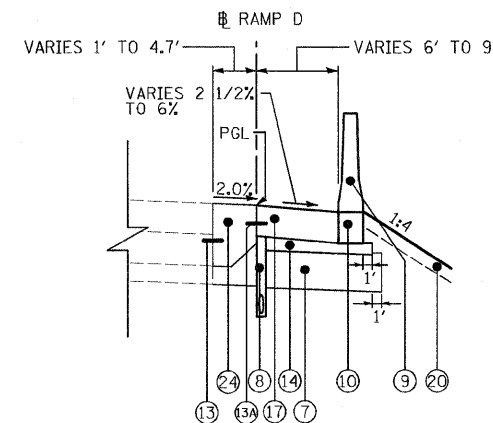
PROPOSED TYPICAL HALF SECTION - RAMP D
(STA. 4018+50 TO STA. 4024+27) RAMP D

NOTE A: IN AREAS WHERE WEST FRONTAGE ROAD IS TO BE MAINTAINED SUBSTITUTE AGGREGATE SHOULDERS, TYPE B 10" FOR TEMPORARY PAVEMENT.

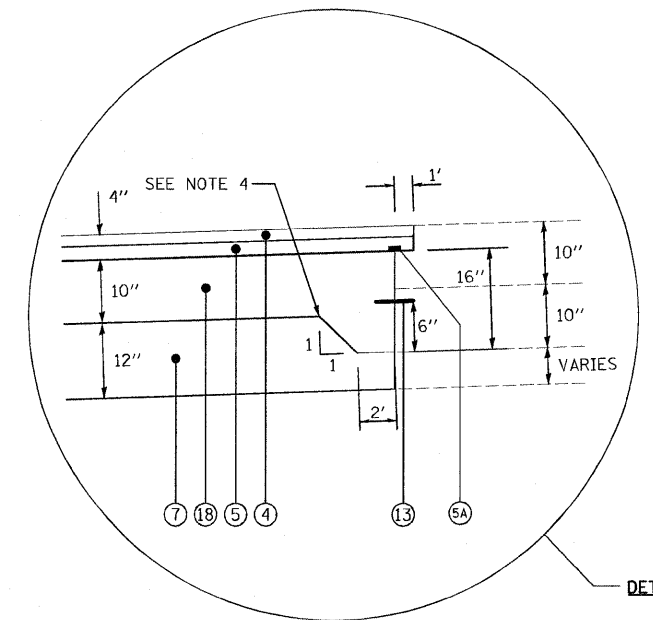
HOT-MIX ASPHALT MIXTURE REQUIREMENTS

MIXTURE TYPE	AC TYPE	AIR VOIDS
HOT-MIX ASPHALT SHOULDERS, 8"		
HOT-MIX ASPHALT SURFACE COURSE, MIX "D", N70 (IL 9.5 mm), 1 3/4"	PG 64-22	4% @ 70 Gyr.
HOT-MIX ASPHALT SHOULDER (HMA BINDER IL-19 mm), 6 1/4"	PG 64-22*	4% @ 70 Gyr.
HOT-MIX ASPHALT SHOULDERS, 12"		
HOT-MIX ASPHALT SURFACE COURSE, MIX "D", N70 (IL 9.5 mm), 1 3/4"	PG 64-22	4% @ 70 Gyr.
HOT-MIX ASPHALT SHOULDER (HMA BINDER IL-19 mm), 10 1/4"	PG 64-22*	4% @ 70 Gyr.
TEMPORARY PAVEMENT		
HOT-MIX ASPHALT SURFACE COURSE, MIX "C", N50 (IL 9.5 mm), 1 3/4"	PG 64-22	4% @ 50 Gyr.
HOT-MIX ASPHALT BINDER COURSE, IL-19.0, N50, 10 1/4"	PG 64-22*	4% @ 50 Gyr.
POLYMERIZED HOT-MIX ASPHALT SURFACE COURSE. MIX "F", N90 (IL 9.5 mm), 1 3/4"	SBS/SBR PG 70-22	4% @ 90 Gyr.
POLYMERIZED HOT-MIX ASPHALT BINDER COURSE, IL-19.0, N90, 2 1/4" TO 4 1/2"	SBS/SBR PG 70-22	4% @ 90 Gyr.
STABILIZED SUBBASE HOT-MIX ASPHALT, BAM, 4 1/2"	PG 64-22*	2% @ 30 Gyr.
DRIVEWAYS		
HOT-MIX ASPHALT BASE COURSE (HMA BINDER IL-19 mm), 8"	PG 64-22*	4% @ 50 Gyr.
HOT-MIX ASPHALT SURFACE COURSE, MIX "C", N50 (IL 9.5 mm), 2"	PG 64-22	4% @ 50 Gyr.
PATCHING		
CLASS D PATCHES (HMA BINDER IL-25 mm), 8"	PG 64-22	4% @ 105 Gyr.

- NOTE 1: THE UNIT WEIGHT USED TO CALCULATE ALL HMA SURFACE MIXTURE QUANTITIES IS 112 LBS/SQ YD/IN.
- NOTE 2: * WHEN RAP EXCEEDS 20%, THE NEW ASPHALT BINDER IN THE MIX SHALL BE PG 58-22.
- NOTE 3: THE CONTRACTOR SHALL HAVE THE OPTION OF INSTALLING 10" P.C.C. PAVEMENT OR 12" HOT-MIX ASPHALT PAVEMENT AS TEMPORARY PAVEMENT.
- NOTE 4: ADDITIONAL CONCRETE SHOWN IN DETAIL "A" SHALL NOT BE PAID FOR SEPARATELY BUT SHALL BE INCLUDED IN THE COST OF PORTLAND CEMENT CONCRETE BASE COURSE, 10".
- NOTE 5: AFTER HMA SURFACE IS REMOVED IF THE UNDERLYING SHOULDER SHOWS SIGNS OF FAILURE, AT THE DIRECTION OF THE ENGINEER, THE SHOULDER SHALL BE REMOVED AND REPLACED WITH CLASS D PATCHES, 8".



PROPOSED TYPICAL HALF SECTION - RAMP D
(STA. 4024+27 TO STA. 4026+39) RAMP D



DETAIL "A"